

INFECTIOUS DISEASES WEEKLY REPORT

# TOKYO IDWR

Tokyo Metropolitan Institute of Public Health

2 May 2006 / Number 16

- Number of patients with the diseases required notifying all the cases
- Number of patients with the diseases to be reported by the sentinel clinics and hospitals
- Disease trend graph (weekly reported cases per sentinel in comparison)

## Surveillance System in Tokyo, Japan

### The infectious diseases which all physicians must report

All physicians must report to health centers the incidence of the diseases which are shown at page one. Health centers electronically report the individual cases to Tokyo Metropolitan Infectious Disease Surveillance Center.

### The infectious diseases required to be reported by the sentinels

The numbers of patients who visit the sentinel clinics or hospitals during a week are reported to health centers in Tokyo. And they electronically report the numbers to Tokyo Metropolitan Infectious Disease Surveillance Center. We have about 260 sentinel clinics and hospitals in Tokyo.

1<sup>st</sup> Week is early January and 52<sup>rd</sup> Week is end of December.

Tokyo Metropolitan Infectious Disease Surveillance Center  
Tokyo Metropolitan Institute of Public Health

TEL:81-3-3363-3213 FAX:81-3-5332-7365  
e-mail:[idsc@tokyo-eiken.go.jp](mailto:idsc@tokyo-eiken.go.jp)  
URL:[idsc.tokyo-eiken.go.jp/](http://idsc.tokyo-eiken.go.jp/)

## Number of patients with the diseases which all physicians must report

Category	Diseases	Tokyo				Japan		
		13th	14th	15th	16th	Total	16th	Total
I	Ebola hemorrhagic fever							
	Crimean-Congo hemorrhagic fever							
	Severe acute respiratory syndrome							
	Smallpox							
	Plague							
	Marburg disease							
	Lassa fever							
II	Acute poliomyelitis							
	Cholera						2	11
	Shigellosis	4		3	2	24	5	138
	Diphtheria							
	Typhoid fever	1		3		10	4	20
	Paratyphoid fever	1		2	2	7	1	6
III	Enterohemorrhagic <i>Escherichia coli</i> infection		1	2	1	13	35	151
IV	Hepatitis E							23
	West Nile fever							
	Hepatitis A	1	1	1		15	4	116
	Echinococcosis							7
	Yellow fever							
	Psittacosis					2		6
	Relapsing fever							
	Q fever							
	Rabies							
	High pathogenic avian influenza							
	Coccidioidomycosis							
	Monkeypox							
	Hemorrhagic fever with renal syndrome							
	Anthrax							
	Scrub typhus (Tsumugamushi disease)							21
	Dengue fever	1	1			3		11
	Nipah virus infection							
	Japanese spotted fever							
	Japanese encephalitis							
	Hantavirus pulmonary syndrome							
B virus disease								
Brucellosis					1		1	
Epidemic typhus								
Botulism								
Malaria				1	5		8	
Tularemia								
Lyme disease								
Lyssavirus infection								
Legionellosis	1	1	1	1	13	3	96	
Leptospirosis								
V	Amebiasis	4	2	1	4	50	10	168
	Acute viral hepatitis(excluding Hepatitis A,Hepatitis E)	1			2	13	1	57
	Acute encephalitis					4		67
	Cryptosporidiosis			1	1	4		3
	Creutzfeldt-Jakob Disease	1	1			8	1	51
	Sever invasive streptococcal infections					2		30
	Acquired immunodeficiency syndrome	5	10	15	10	141	12	307
	Giardiasis		3	1	1	6	1	18
	Meningococcal meningitis			1		1		5
	Congenital rubella syndrome							
	Syphilis		4	1	3	27	10	148
	Tetanus			1		2	1	14
	Vancomycin-resistant <i>Staphylococcus aureus</i> infection							
	Vancomycin-resistant <i>enterococcus</i> infection	1	1			4	1	16

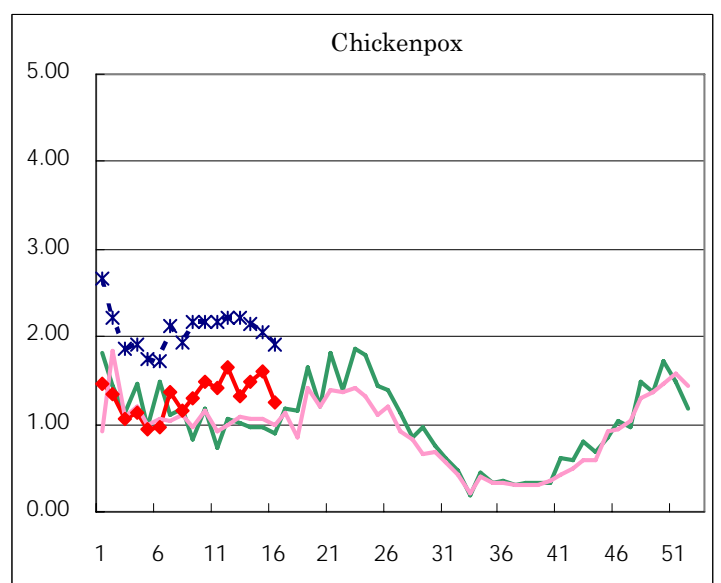
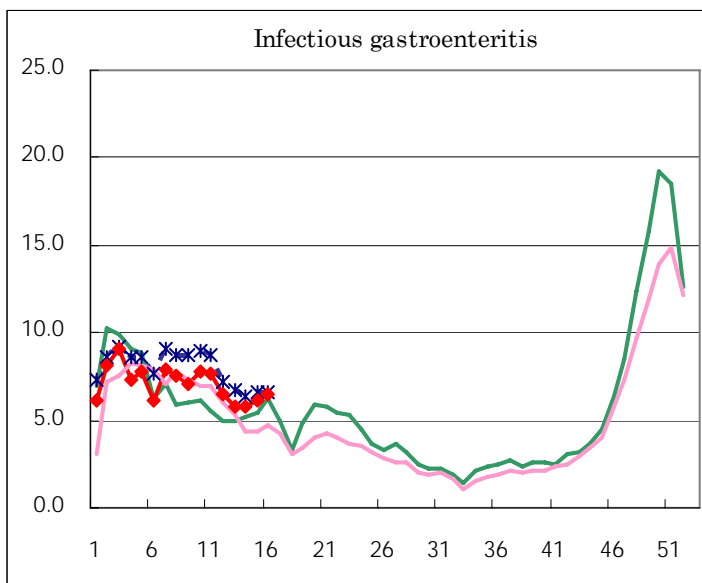
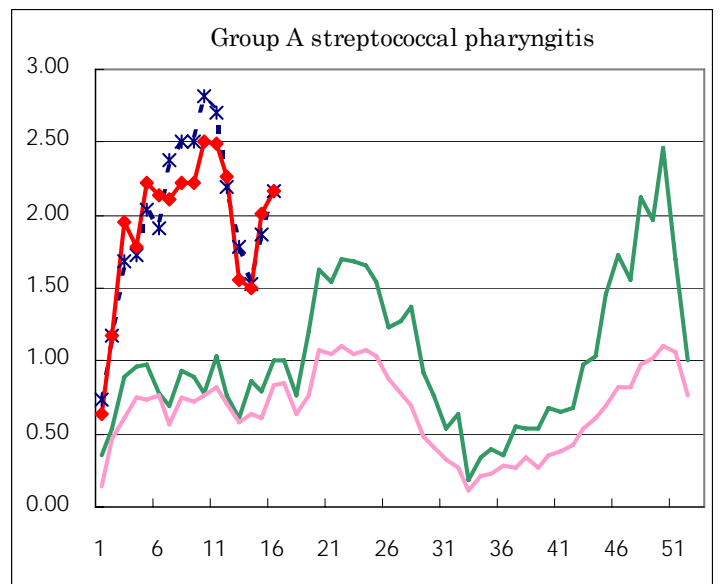
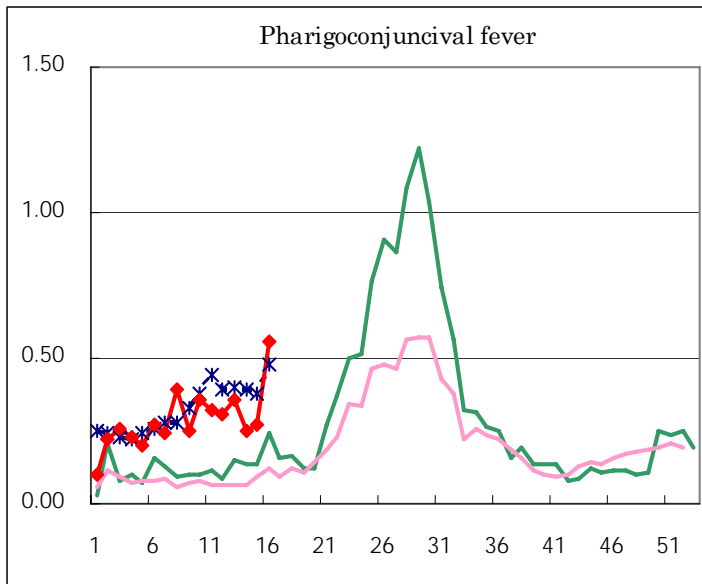
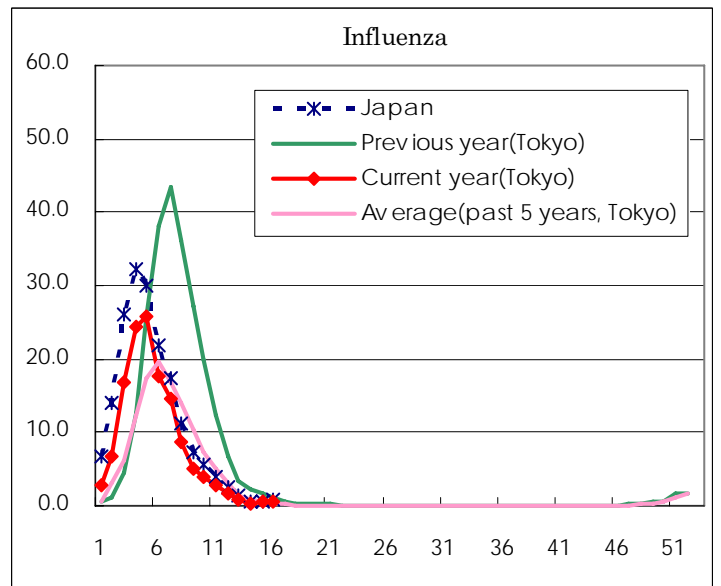
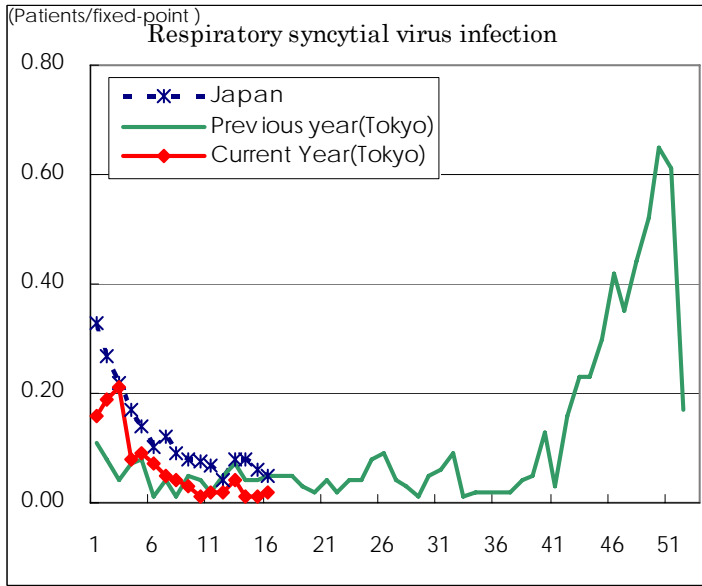
( Blank means 0. )

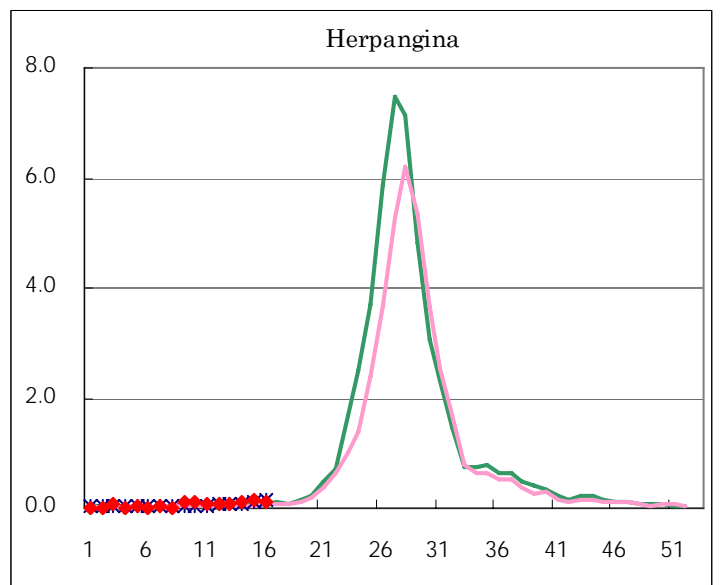
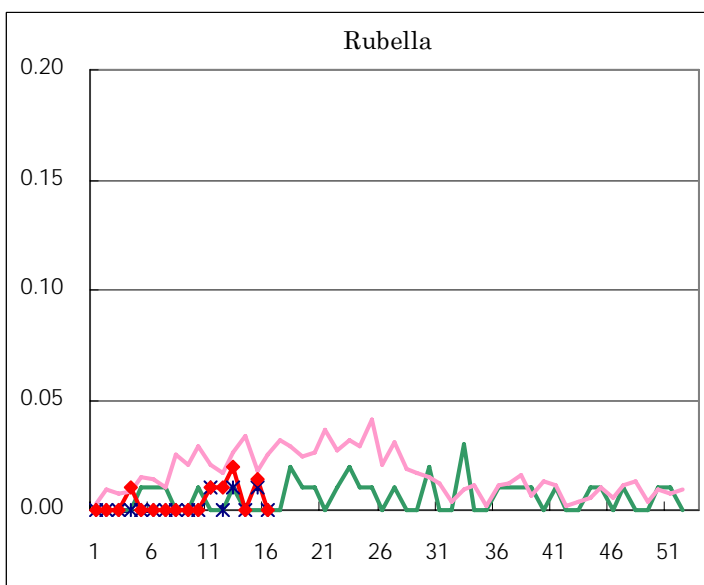
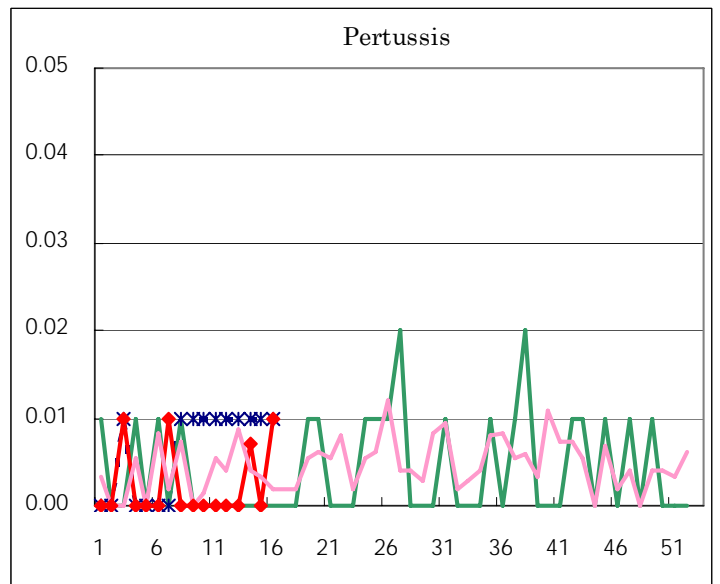
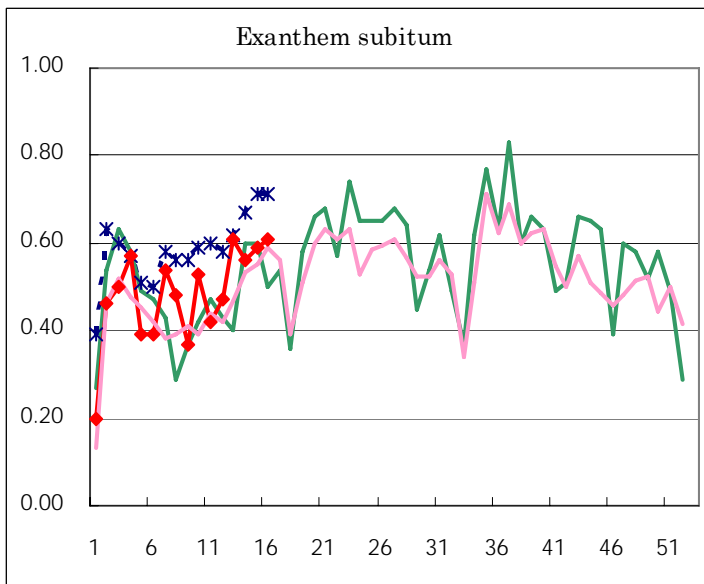
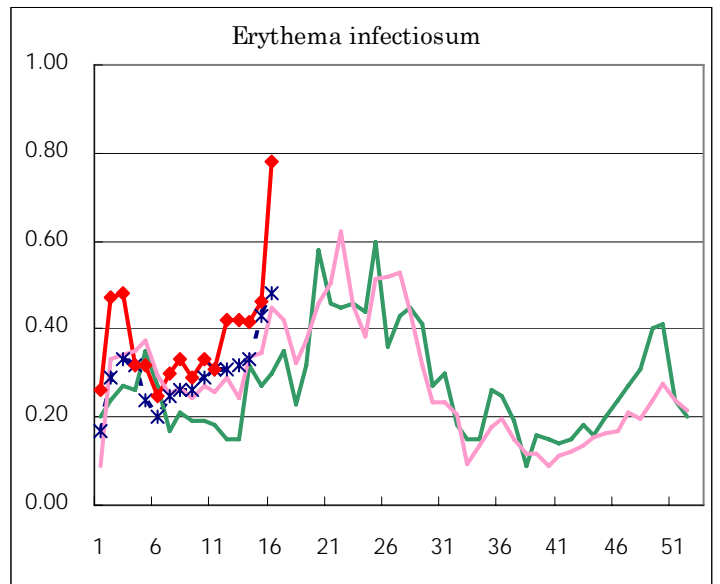
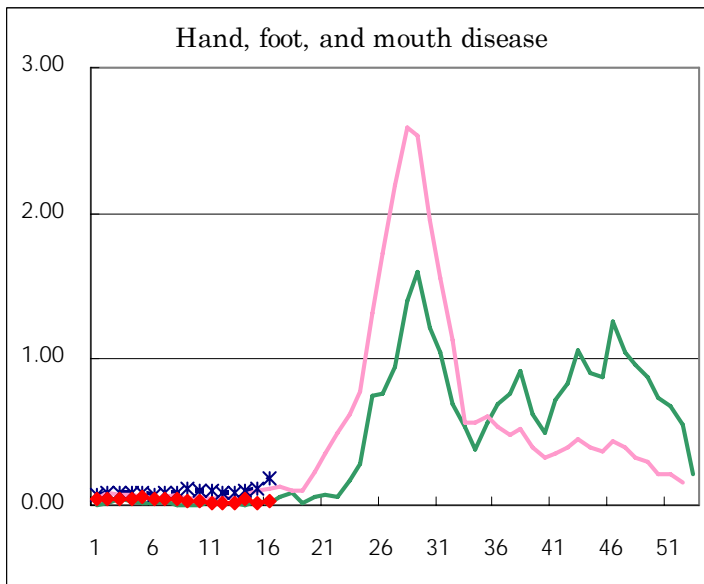
Number of patients with the diseases to be reported  
by the designated clinics and hospitals

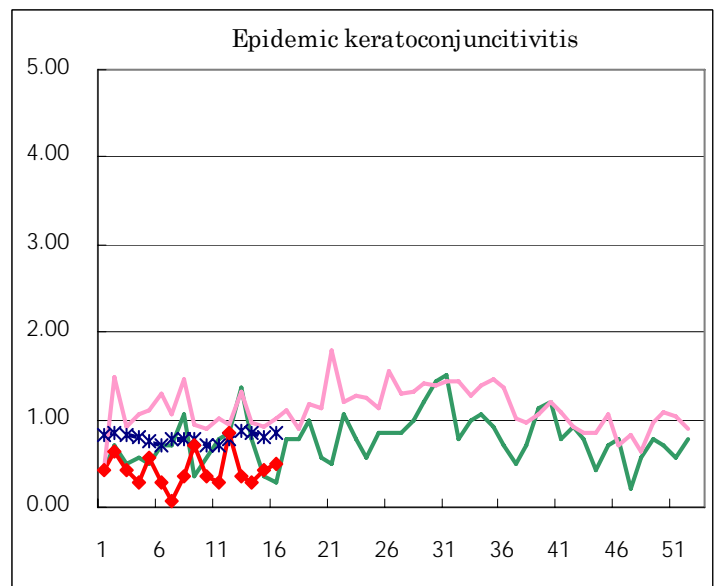
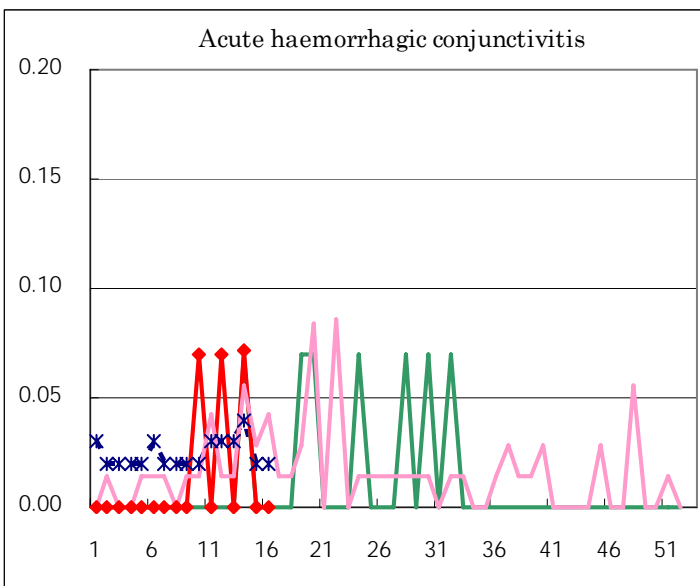
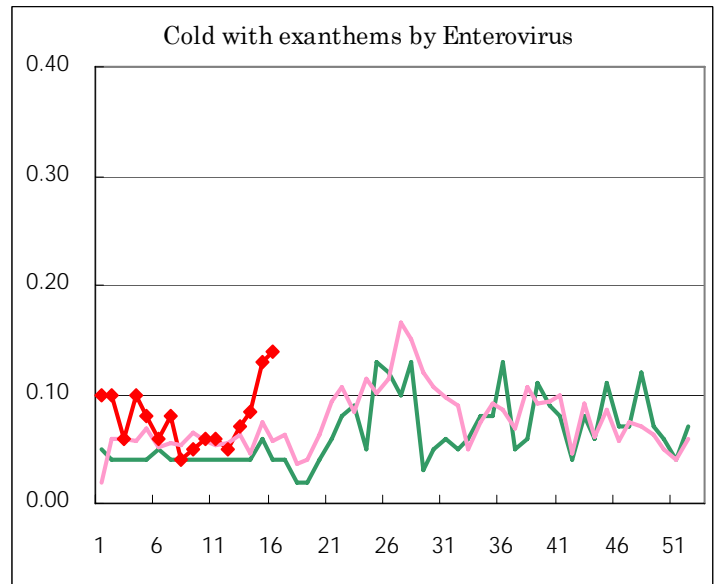
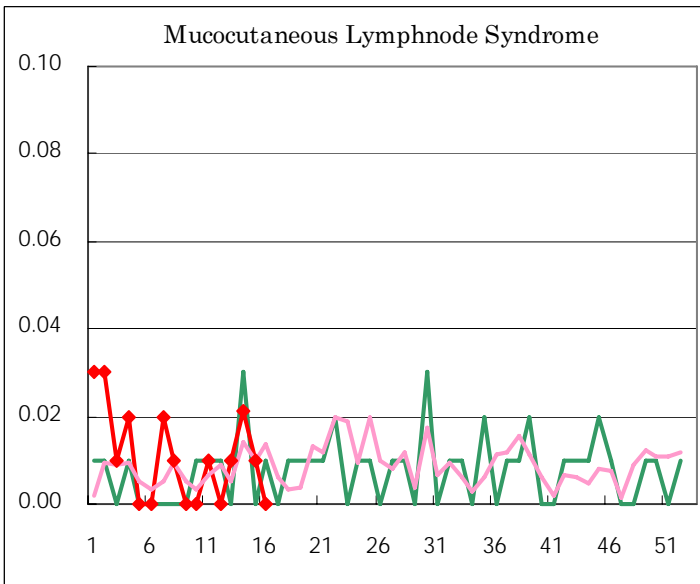
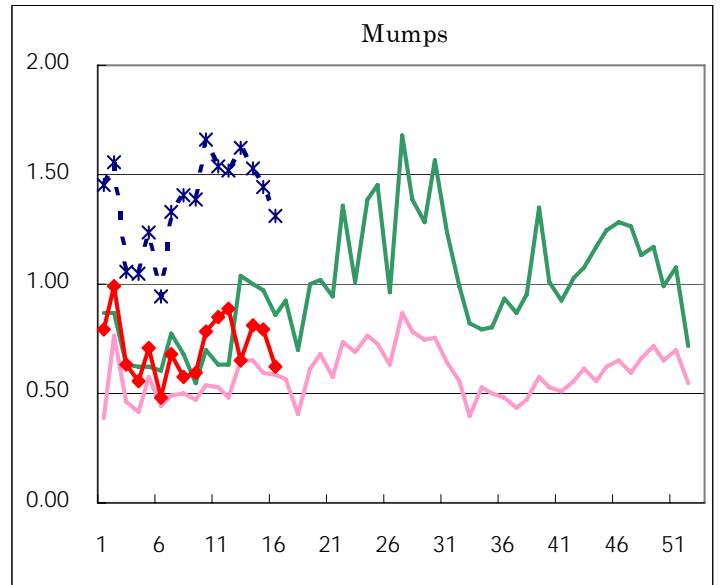
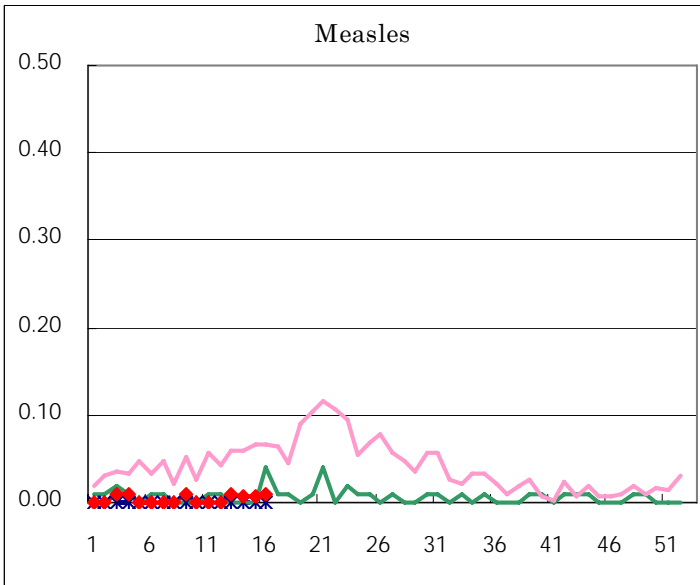
Diseases	Sex	2006				Total
		13th	14th	15th	16th	
Respiratory syncytial virus infection	M	4	1	1	1	7
	F	2	1	1	2	6
Influenza	M	79	32	49	58	218
	F	85	31	38	37	191
Pharyngoconjunctival fever	M	23	19	23	40	105
	F	28	17	16	40	101
Group A streptococcal pharyngitis	M	120	117	159	150	546
	F	100	95	127	157	479
Infectious gastroenteritis	M	413	437	482	508	1,840
	F	399	391	387	420	1,597
Chickenpox	M	94	100	117	97	408
	F	95	110	111	80	396
Hand, foot, and mouth disease	M		5	2	2	9
	F	1	1	1	2	5
Erythema infectiosum	M	33	33	34	52	152
	F	27	26	32	59	144
Exanthem subitum	M	44	45	50	50	189
	F	42	35	34	36	147
Pertussis	M		1		2	3
	F					
Rubella	M	2		1		3
	F	1		1		2
Herpangina	M	5	5	9	13	32
	F	5	10	10	5	30
Measles	M	1		1	1	3
	F		1			1
Mumps	M	50	67	74	41	232
	F	43	48	38	47	176
Cold with exanthems by Enterovirus	M	3	8	9	11	31
	F	7	4	9	9	29
Mucocutaneous Lymphnode Syndrome	M	1	1	1		3
	F	1	2	1		4
Acute hemorrhagic conjunctivitis	M		1			1
	F					
Epidemic keratoconjunctivitis	M	2	2	2	5	11
	F	3	2	4	2	11
Bacterial meningitis	M					
	F					
Aseptic meningitis	M				2	2
	F					
Mycoplasma pneumonia	M	4	3	1	2	10
	F	1	4	1		6
Chlamydial pneumonia (excluding psittacosis)	M					
	F					
Measles in adults	M					
	F					

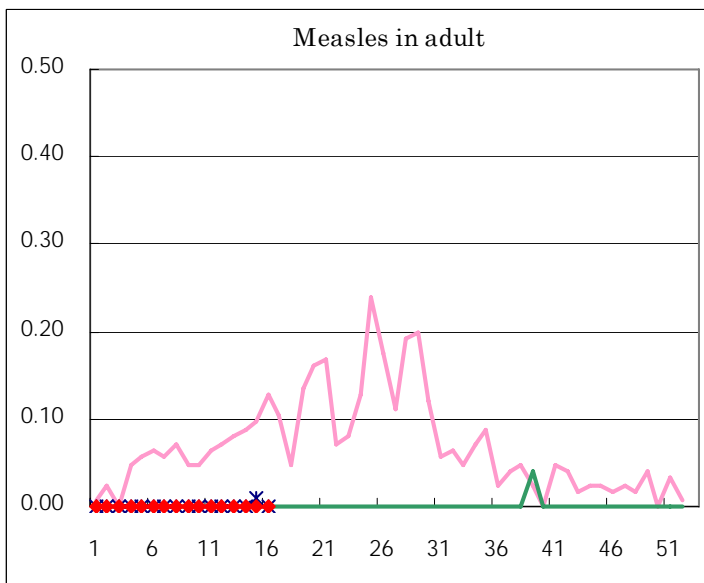
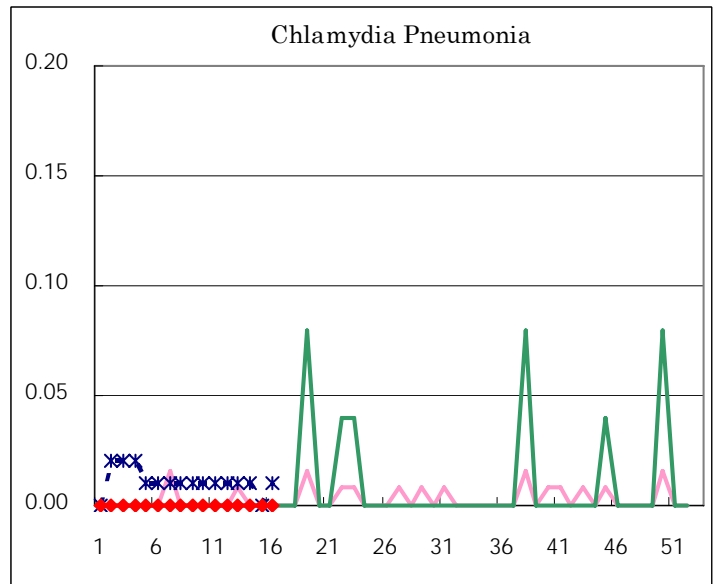
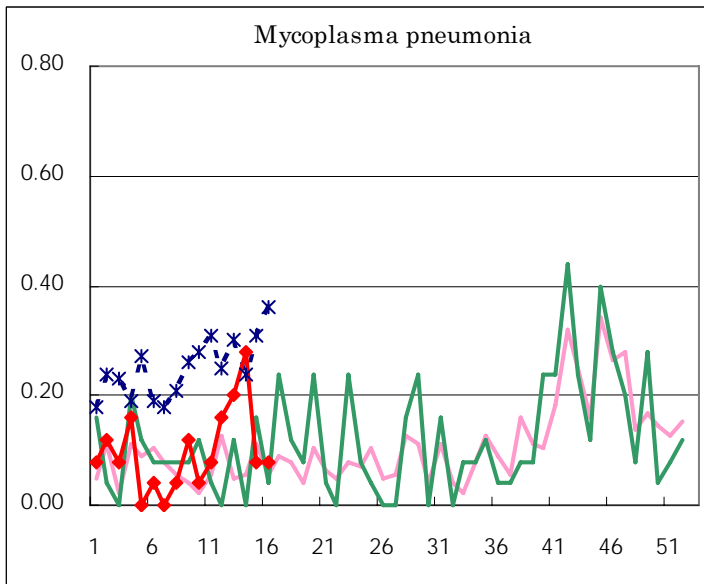
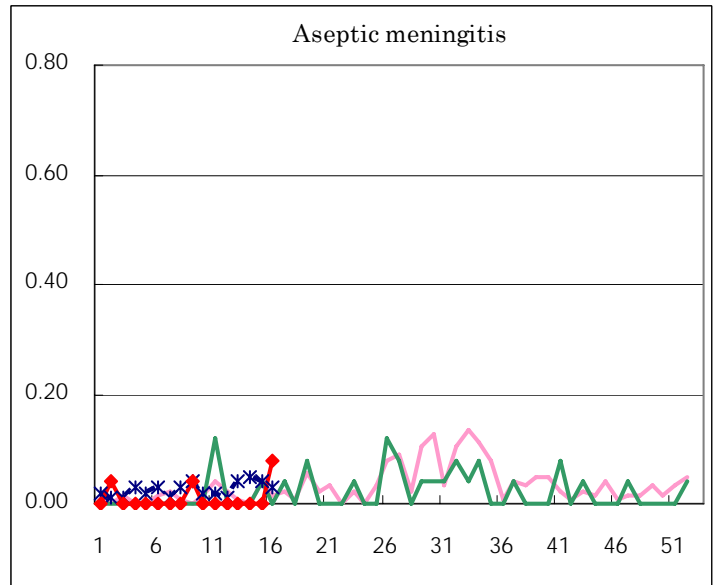
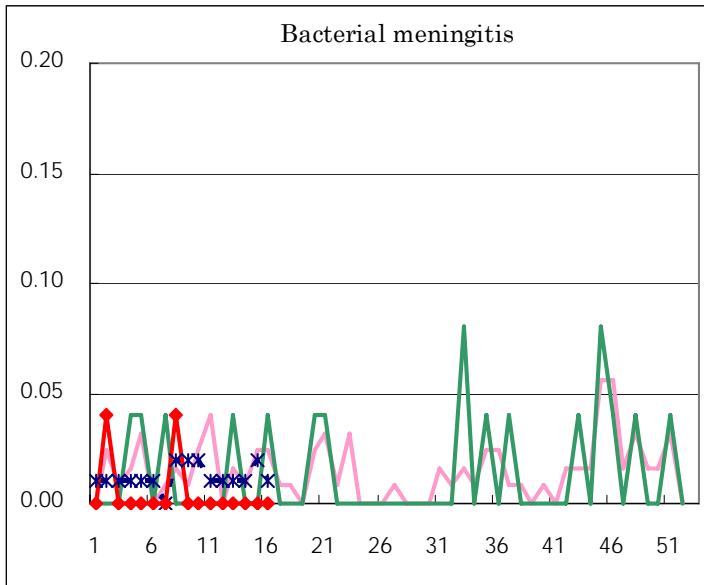
( Blank means 0. )

# Disease Trend Graph (weekly reported cases per fixed-point in comparison)









Tokyo Metropolitan Government  
**Infectious Disease Surveillance Center**