

INFECTIOUS DISEASES WEEKLY REPORT

TOKYO IDWR

Tokyo Metropolitan Institute of Public Health

10 May 2006 / Number 17

- Number of patients with the diseases required notifying all the cases
- Number of patients with the diseases to be reported by the sentinel clinics and hospitals
- Disease trend graph (weekly reported cases per sentinel in comparison)

Surveillance System in Tokyo, Japan

The infectious diseases which all physicians must report

All physicians must report to health centers the incidence of the diseases which are shown at page one. Health centers electronically report the individual cases to Tokyo Metropolitan Infectious Disease Surveillance Center.

The infectious diseases required to be reported by the sentinels

The numbers of patients who visit the sentinel clinics or hospitals during a week are reported to health centers in Tokyo. And they electronically report the numbers to Tokyo Metropolitan Infectious Disease Surveillance Center. We have about 260 sentinel clinics and hospitals in Tokyo.

1st Week is early January and 52rd Week is end of December.

Tokyo Metropolitan Infectious Disease Surveillance Center
Tokyo Metropolitan Institute of Public Health

TEL:81-3-3363-3213 FAX:81-3-5332-7365
e-mail:idsc@tokyo-eiken.go.jp
URL:idsc.tokyo-eiken.go.jp/

Number of patients with the diseases which all physicians must report

Category	Diseases	Tokyo				Japan		
		14th	15th	16th	17th	Total	17th	Total
I	Ebola hemorrhagic fever							
	Crimean-Congo hemorrhagic fever							
	Severe acute respiratory syndrome							
	Smallpox							
	Plague							
	Marburg disease							
	Lassa fever							
II	Acute poliomyelitis							
	Cholera							12
	Shigellosis		3	2		24	7	152
	Diphtheria							
	Typhoid fever		3		2	12	4	30
	Paratyphoid fever		2	2		7		9
III	Enterohemorrhagic <i>Escherichia coli</i> infection	1	2	3	3	18	22	205
IV	Hepatitis E							25
	West Nile fever							
	Hepatitis A	1	1		2	17	10	142
	Echinococcosis						1	9
	Yellow fever							
	Psittacosis					2	1	7
	Relapsing fever							
	Q fever							
	Rabies							
	High pathogenic avian influenza							
	Coccidioidomycosis							
	Monkeypox							
	Hemorrhagic fever with renal syndrome							
	Anthrax							
	Scrub typhus (Tsutsugamushi disease)						4	29
	Dengue fever	1				3		13
	Nipah virus infection							
	Japanese spotted fever							
	Japanese encephalitis							
	Hantavirus pulmonary syndrome							
	B virus disease							
Brucellosis					1		1	
Epidemic typhus								
Botulism								
Malaria			1		5	1	11	
Tularemia								
Lyme disease								
Lyssavirus infection								
Legionellosis	1	1	1	1	14	5	108	
Leptospirosis								
V	Amebiasis	2	1	4	3	53	9	208
	Acute viral hepatitis(excluding Hepatitis A,Hepatitis E)			2		13		72
	Acute encephalitis					4	3	77
	Cryptosporidiosis		1	1		4		6
	Creutzfeldt-Jakob Disease	1				8	1	58
	Sever invasive streptococcal infections				2	4	3	43
	Acquired immunodeficiency syndrome	10	15	10	2	143	7	354
	Giardiasis	3	1	1		6	1	22
	Meningococcal meningitis		1			1		6
	Congenital rubella syndrome							
	Syphilis	4	1	3	1	28	8	189
	Tetanus		1			2	1	19
	Vancomycin-resistant <i>Staphylococcus aureus</i> infection							
	Vancomycin-resistant <i>enterococcus</i> infection	1				4	4	23

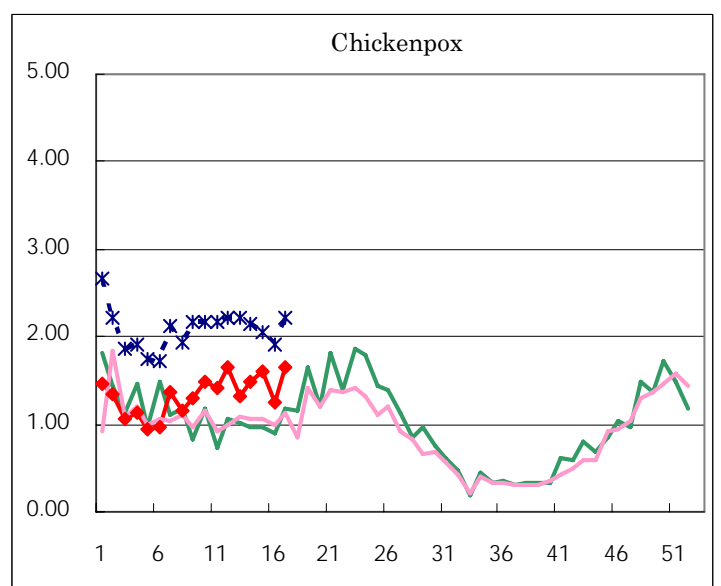
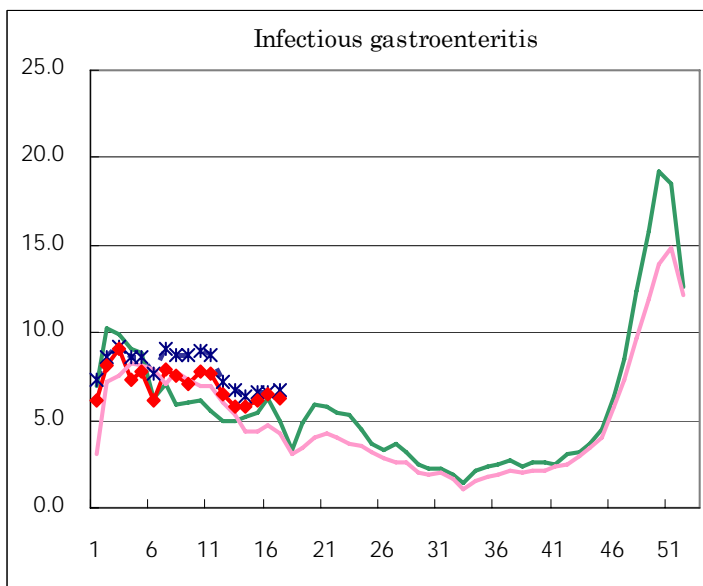
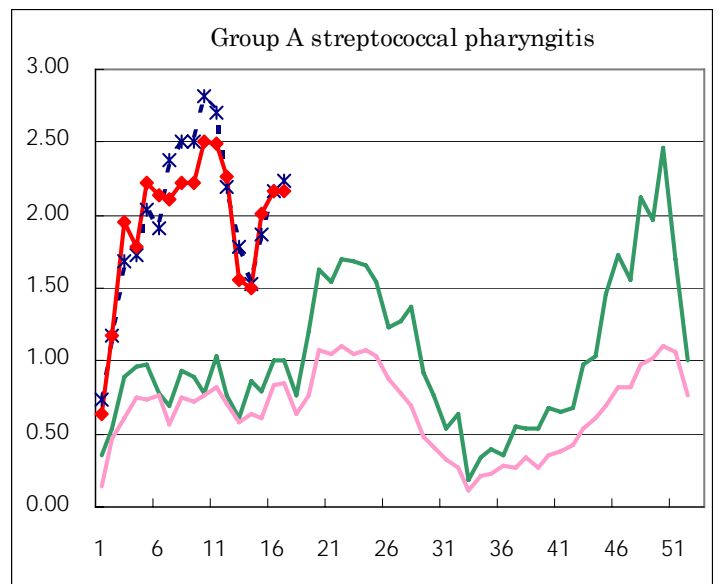
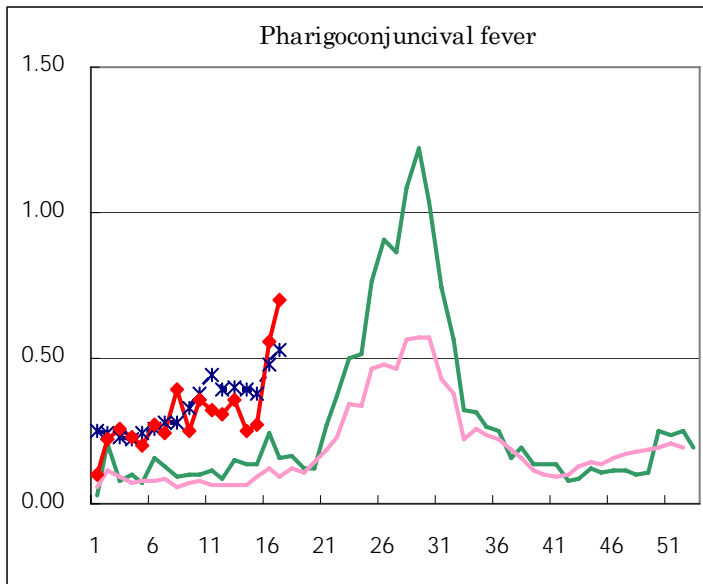
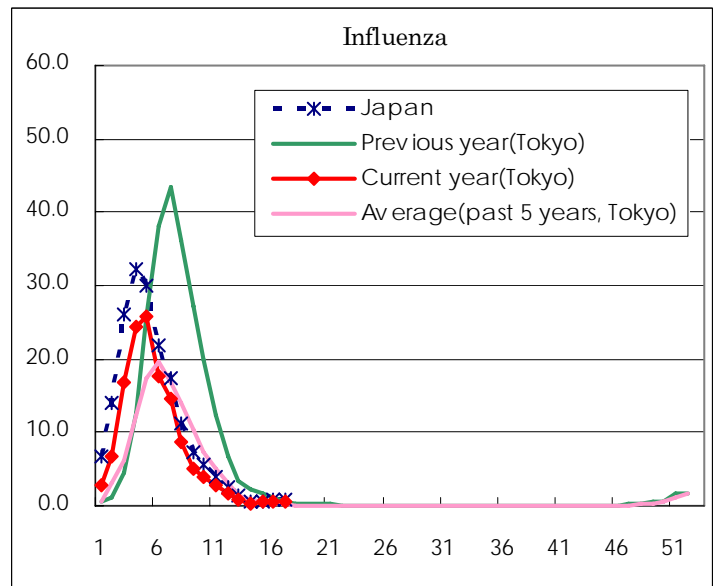
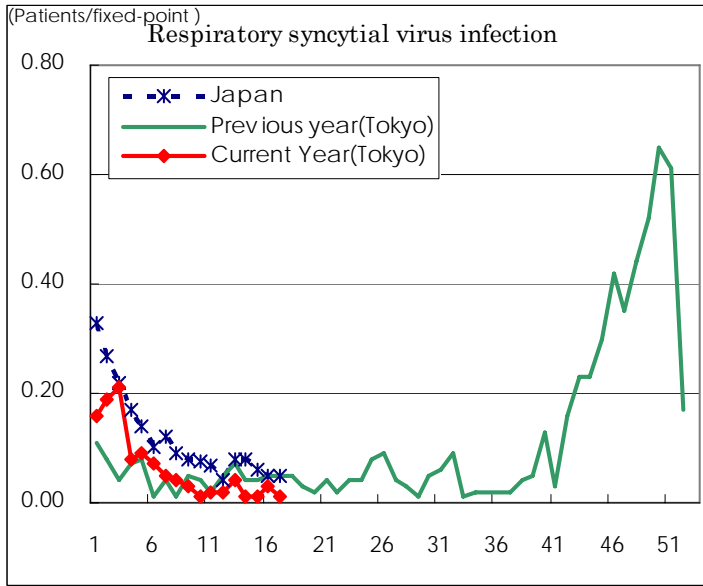
(Blank means 0.)

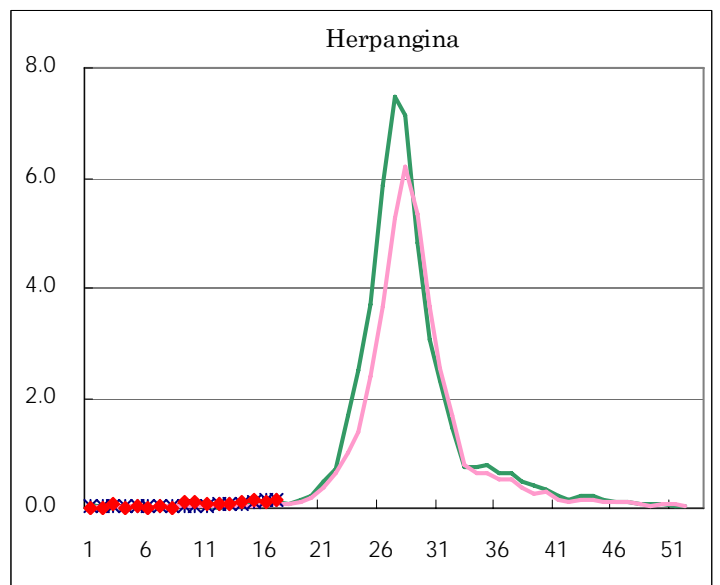
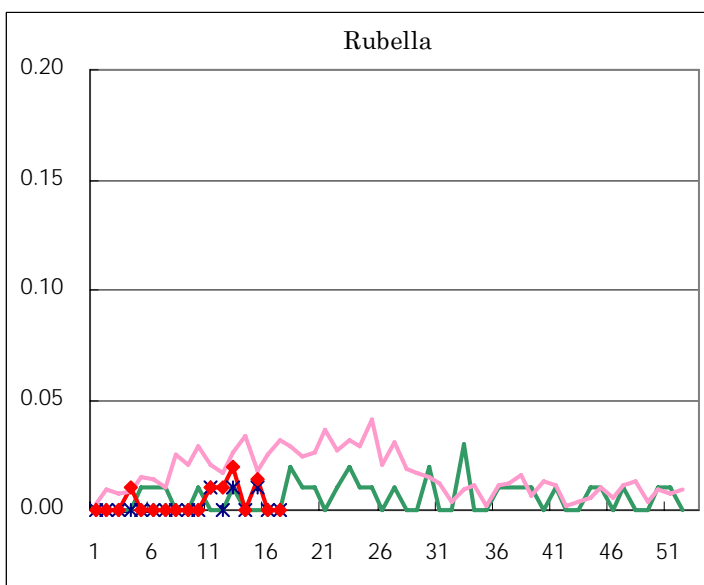
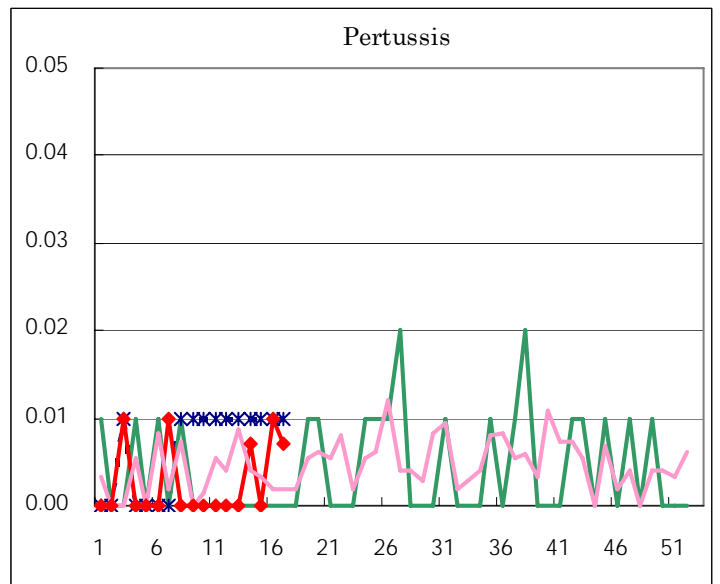
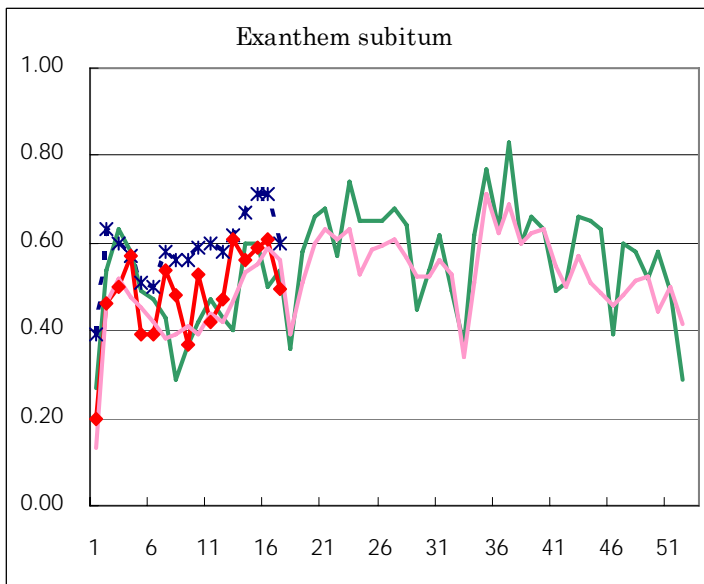
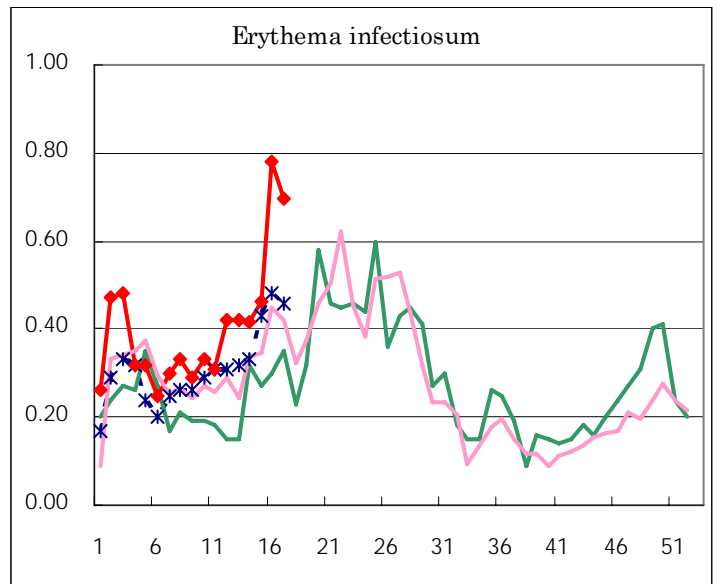
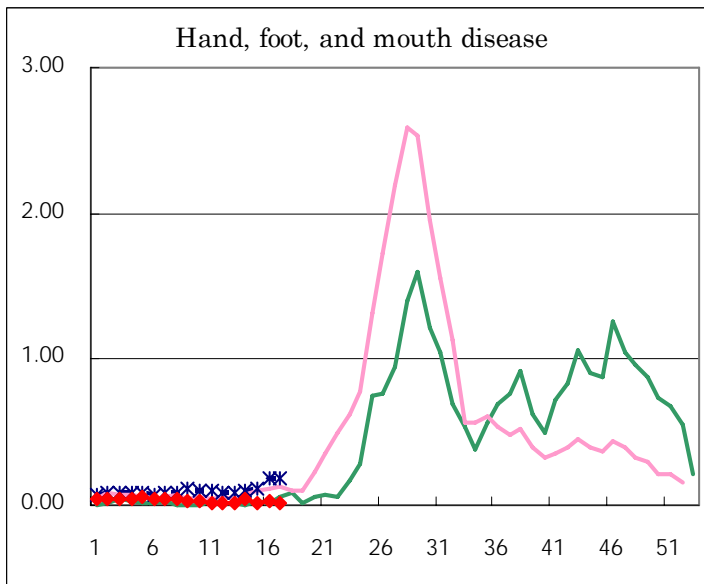
Number of patients with the diseases to be reported
by the designated clinics and hospitals

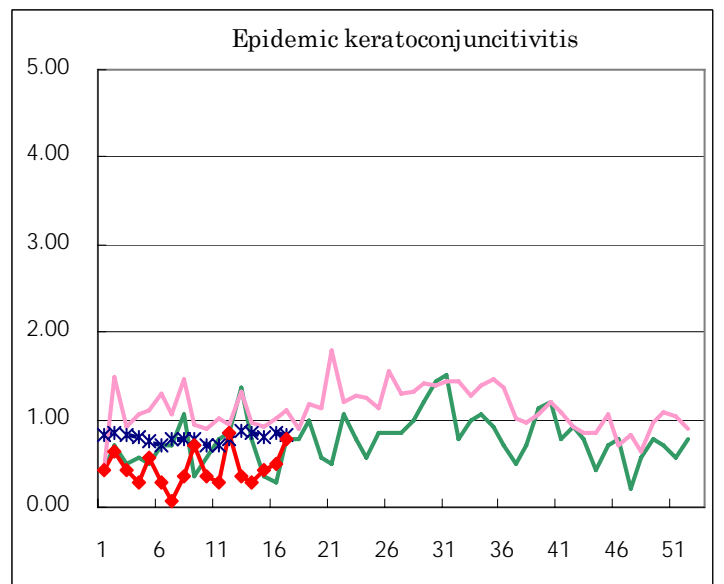
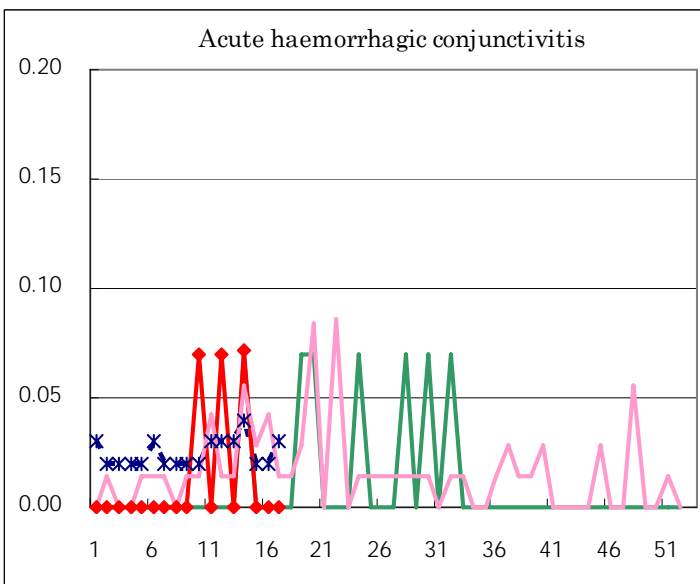
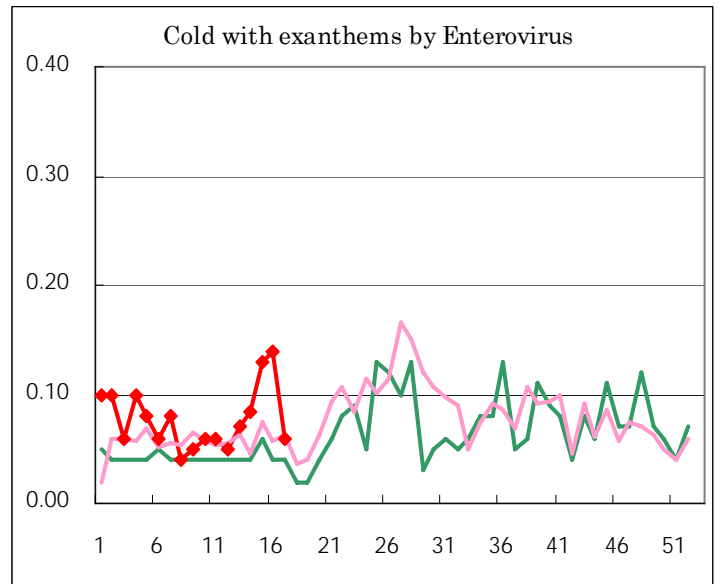
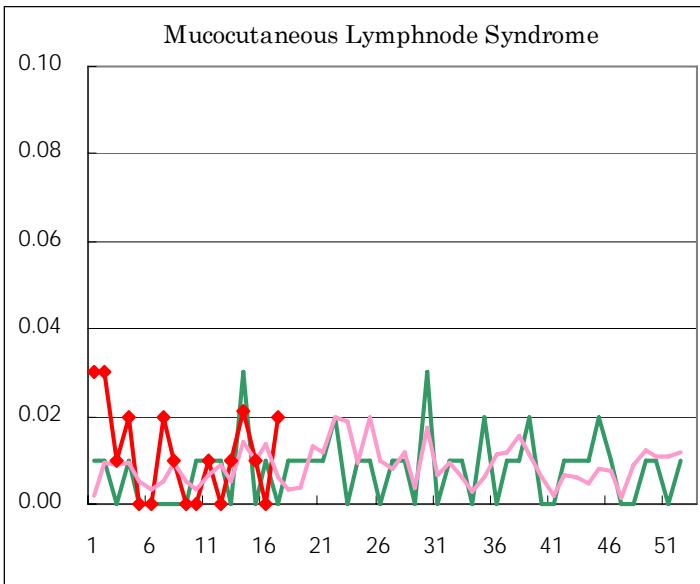
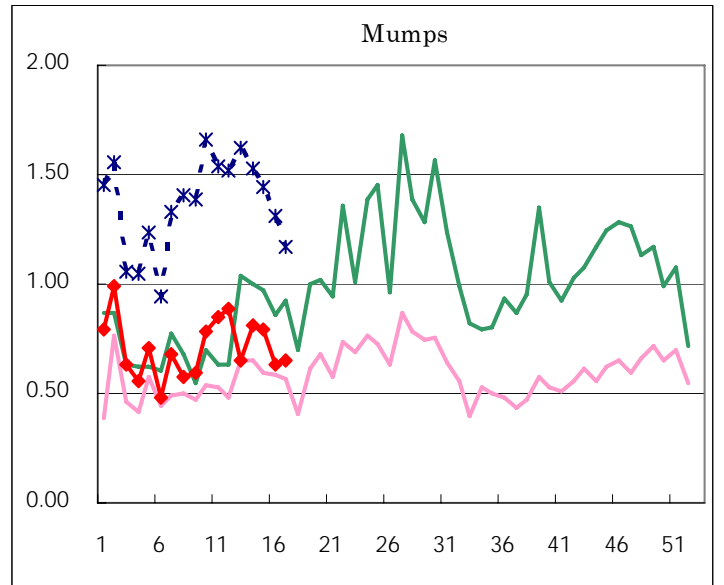
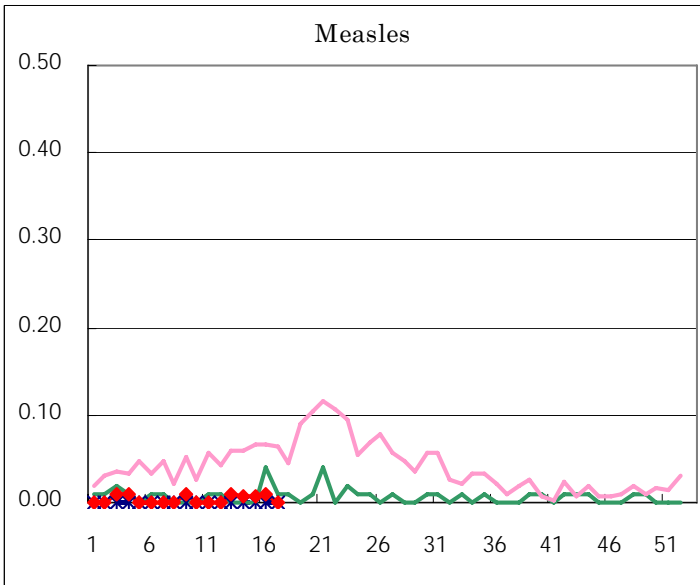
Diseases	Sex	2006				Total
		14th	15th	16th	17th	
Respiratory syncytial virus infection	M	1	1	2	1	5
	F	1	1	2		4
Influenza	M	32	49	58	52	191
	F	31	38	37	23	129
Pharyngoconjunctival fever	M	19	23	40	52	134
	F	17	16	40	47	120
Group A streptococcal pharyngitis	M	117	159	151	171	598
	F	95	127	157	137	516
Infectious gastroenteritis	M	437	482	509	465	1,893
	F	391	387	420	429	1,627
Chickenpox	M	100	117	97	125	439
	F	110	111	80	108	409
Hand, foot, and mouth disease	M	5	2	2	2	11
	F	1	1	2	1	5
Erythema infectiosum	M	33	34	52	44	163
	F	26	32	59	55	172
Exanthem subitum	M	45	50	51	35	181
	F	35	34	36	35	140
Pertussis	M	1		2	1	4
	F					
Rubella	M		1			1
	F		1			1
Herpangina	M	5	9	13	11	38
	F	10	10	5	12	37
Measles	M		1	1		2
	F	1				1
Mumps	M	67	74	41	52	234
	F	48	38	48	40	174
Cold with exanthems by Enterovirus	M	8	9	11	5	33
	F	4	9	9	4	26
Mucocutaneous Lymphnode Syndrome	M	1	1		2	4
	F	2	1		1	4
Acute hemorrhagic conjunctivitis	M	1				1
	F					
Epidemic keratoconjunctivitis	M	2	2	5	6	15
	F	2	4	2	5	13
Bacterial meningitis	M					
	F				1	1
Aseptic meningitis	M			2	1	3
	F					
Mycoplasma pneumonia	M	3	1	2		6
	F	4	1		1	6
Chlamydial pneumonia (excluding psittacosis)	M					
	F					
Measles in adults	M					
	F					

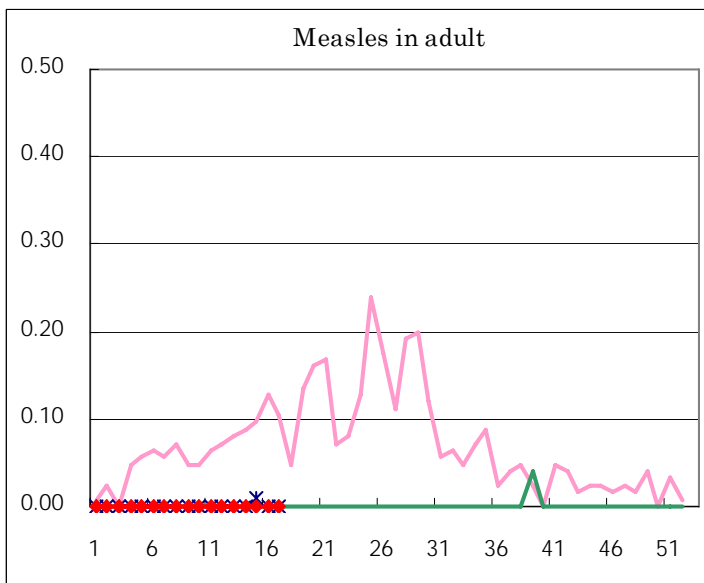
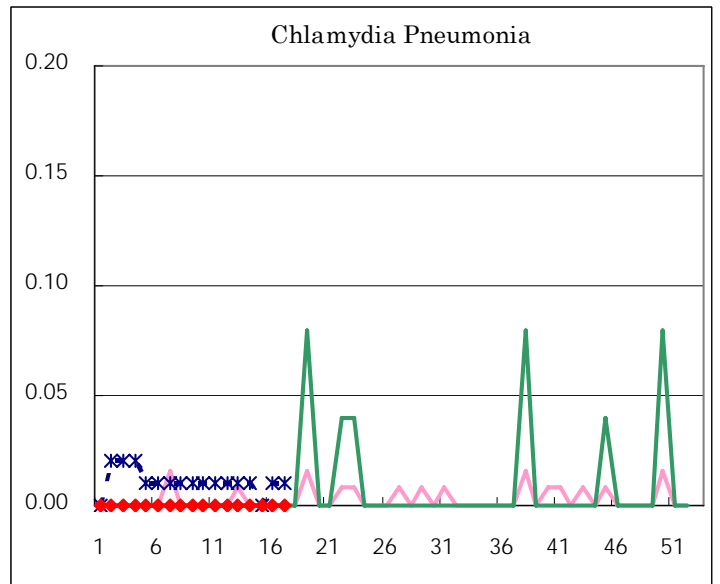
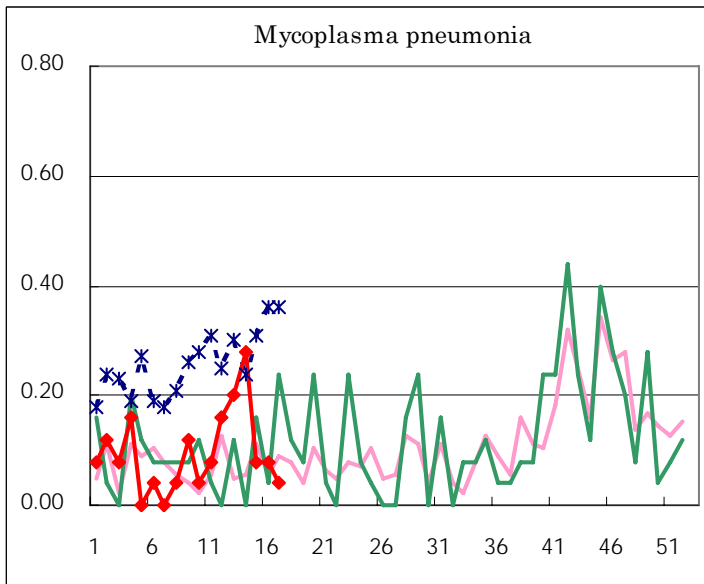
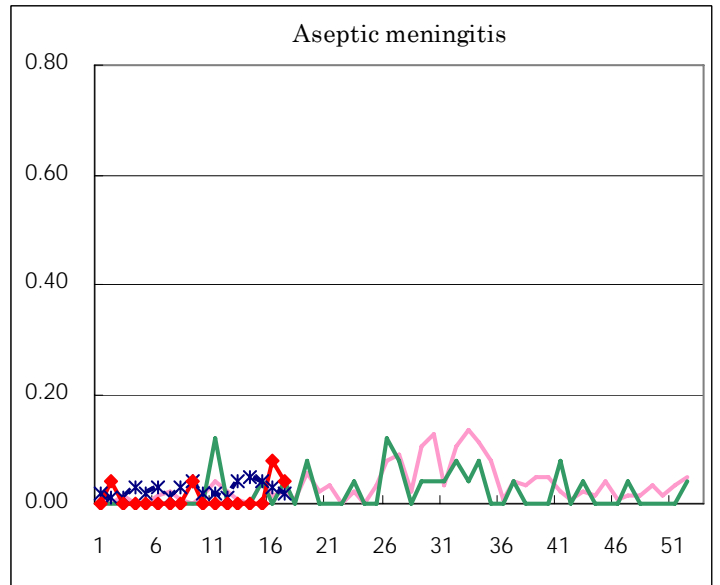
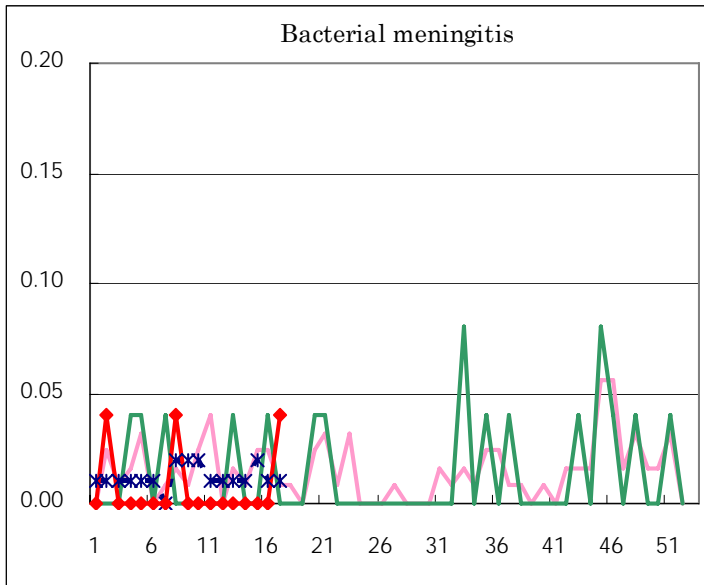
(Blank means 0.)

Disease Trend Graph (weekly reported cases per fixed-point in comparison)









Tokyo Metropolitan Government
Infectious Disease Surveillance Center