

INFECTIOUS DISEASES WEEKLY REPORT

# TOKYO IDWR

Tokyo Metropolitan Institute of Public Health

27 June 2006 / Number 24

- Number of patients with the diseases required notifying all the cases
- Number of patients with the diseases to be reported by the sentinel clinics and hospitals
- Disease trend graph (weekly reported cases per sentinel in comparison)

## Surveillance System in Tokyo, Japan

The infectious diseases which all physicians must report

All physicians must report to health centers the incidence of the diseases which are shown at page one. Health centers electronically report the individual cases to Tokyo Metropolitan Infectious Disease Surveillance Center.

The infectious diseases required to be reported by the sentinels

The numbers of patients who visit the sentinel clinics or hospitals during a week are reported to health centers in Tokyo. And they electronically report the numbers to Tokyo Metropolitan Infectious Disease Surveillance Center. We have about 260 sentinel clinics and hospitals in Tokyo.

1<sup>st</sup> Week is early January and 52<sup>nd</sup> Week is end of December.

Tokyo Metropolitan Infectious Disease Surveillance Center  
Tokyo Metropolitan Institute of Public Health

TEL:81-3-3363-3213 FAX:81-3-5332-7365  
e-mail: [idsc@tokyo-eiken.go.jp](mailto:idsc@tokyo-eiken.go.jp)  
URL: [idsc.tokyo-eiken.go.jp/](http://idsc.tokyo-eiken.go.jp/)

## Number of patients with the diseases which all physicians must report

Category	Diseases	Tokyo					Japan	
		21st	22nd	23rd	24th	Total	24th	Total
I	Ebola hemorrhagic fever							
	Crimean-Congo hemorrhagic fever							
	Severe acute respiratory syndrome							
	Smallpox							
	Plague							
	Marburg disease							
	Lassa fever							
II	Acute poliomyelitis							
	Cholera			2		3		19
	Shigellosis					28	4	191
	Diphtheria							
	Typhoid fever					12		40
	Paratyphoid fever					9		13
III	Enterohemorrhagic <i>Escherichia coli</i> infection	1	2	3	8	44	72	558
IV	Hepatitis E		1			1		35
	West Nile fever							
	Hepatitis A		1	1		21	4	195
	Echinococcosis							11
	Yellow fever							
	Psittacosis					3	4	9
	Relapsing fever							
	Q fever							
	Rabies							
	High pathogenic avian influenza							
	Coccidioidomycosis							1
	Monkeypox							
	Hemorrhagic fever with renal syndrome							
	Anthrax							
	Scrub typhus (Tsutsugamushi disease)						21	101
	Dengue fever					4	1	17
	Nipah virus infection							
	Japanese spotted fever						2	6
	Japanese encephalitis							
	Hantavirus pulmonary syndrome							
	B virus disease							
Brucellosis					1		2	
Epidemic typhus								
Botulism							1	
Malaria					7		23	
Tularemia								
Lyme disease						1		
Lyssavirus infection								
Legionellosis	2	3	2	3	27	6	157	
Leptospirosis								
V	Amebiasis	5	5	3	2	80	10	287
	Acute viral hepatitis(excluding Hepatitis A,Hepatitis E)	1		1		17	4	97
	Acute encephalitis					4		85
	Cryptosporidiosis					5		7
	Creutzfeldt-Jakob Disease					9	1	77
	Sever invasive streptococcal infections			1	1	7		57
	Acquired immunodeficiency syndrome	7	14	4	10	205	16	505
	Giardiasis			1		11	1	34
	Meningococcal meningitis					1		7
	Congenital rubella syndrome							
	Syphilis	2	3		8	48	13	250
	Tetanus			1		3		32
	Vancomycin-resistant <i>Staphylococcus aureus</i> infection							
	Vancomycin-resistant <i>enterococcus</i> infection					4	1	32

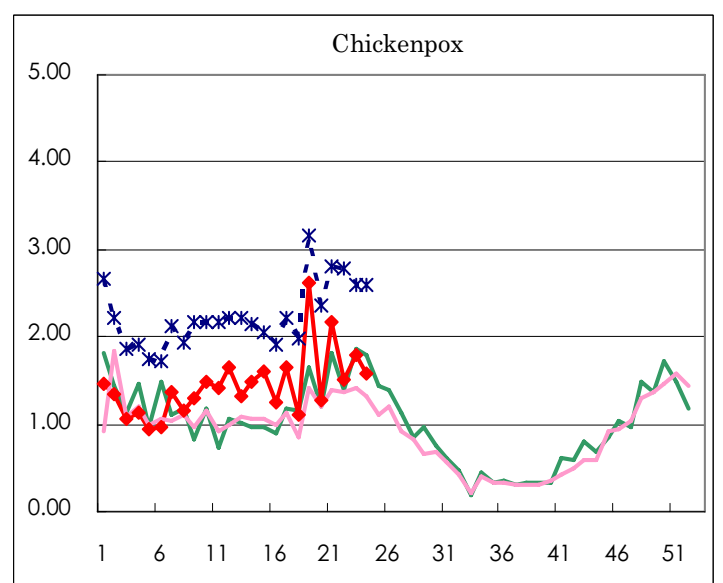
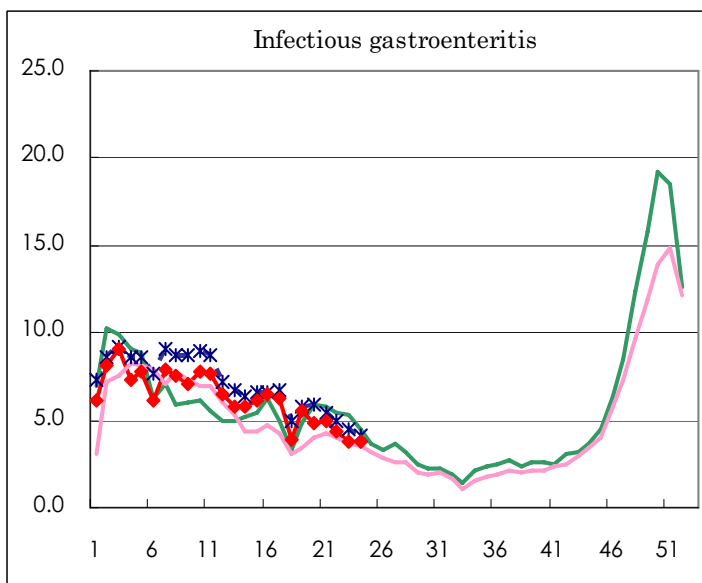
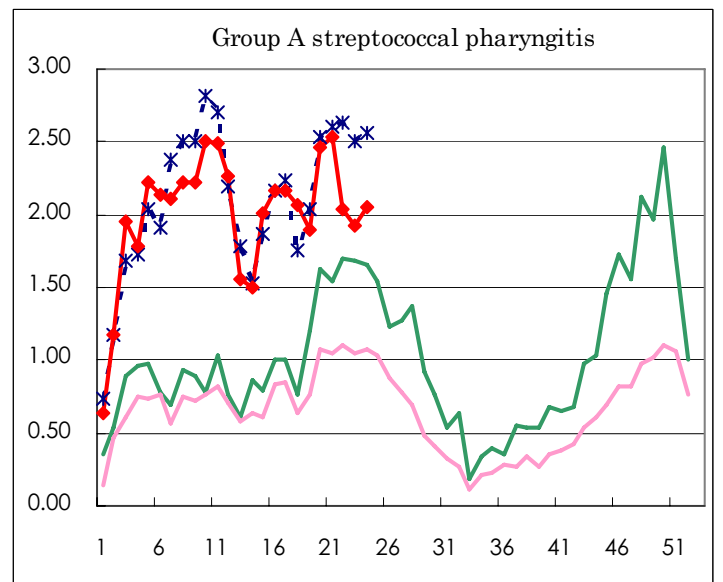
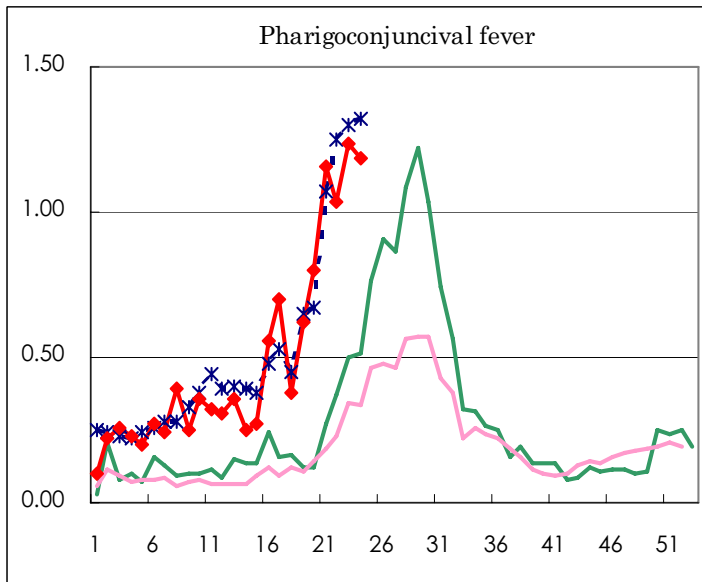
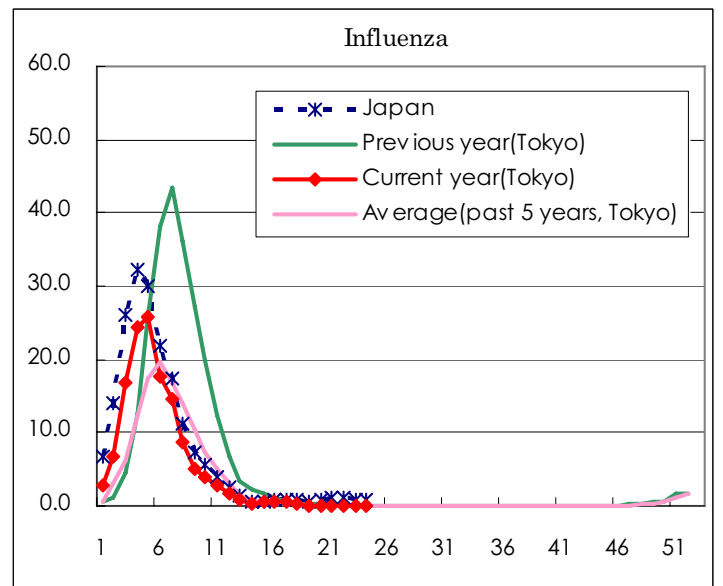
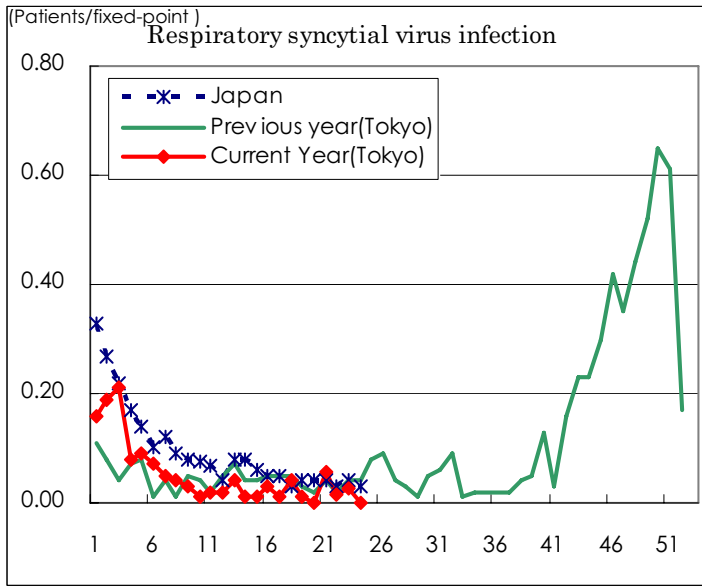
( Blank means 0. )

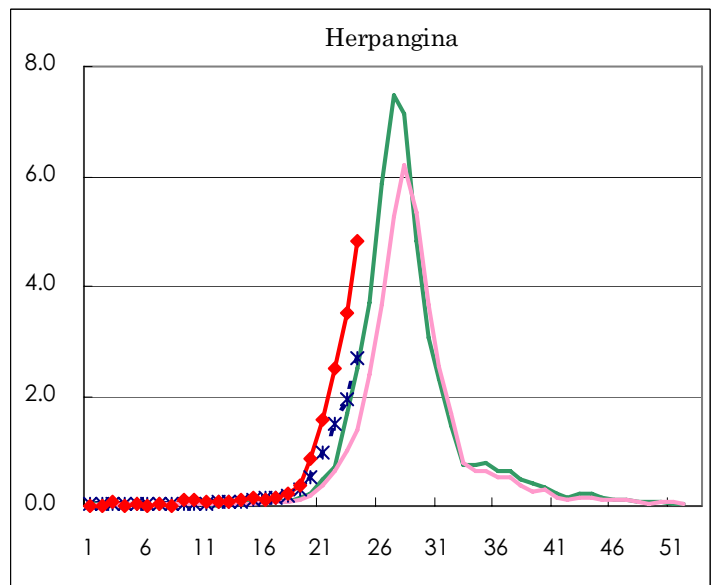
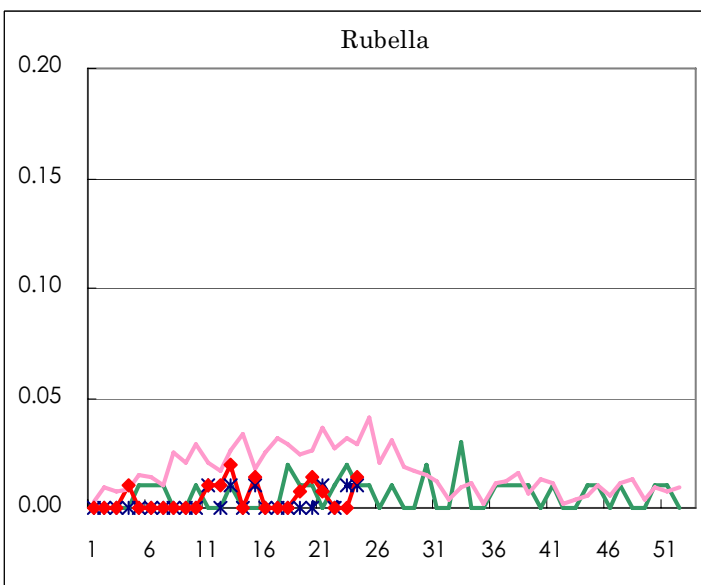
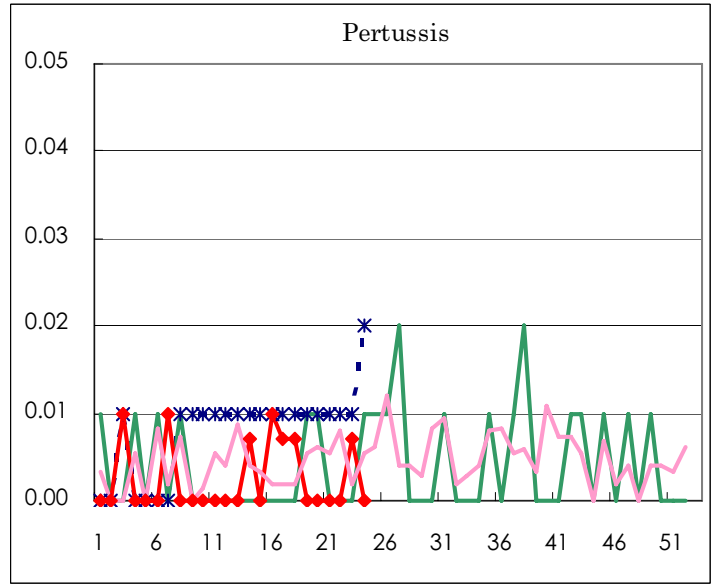
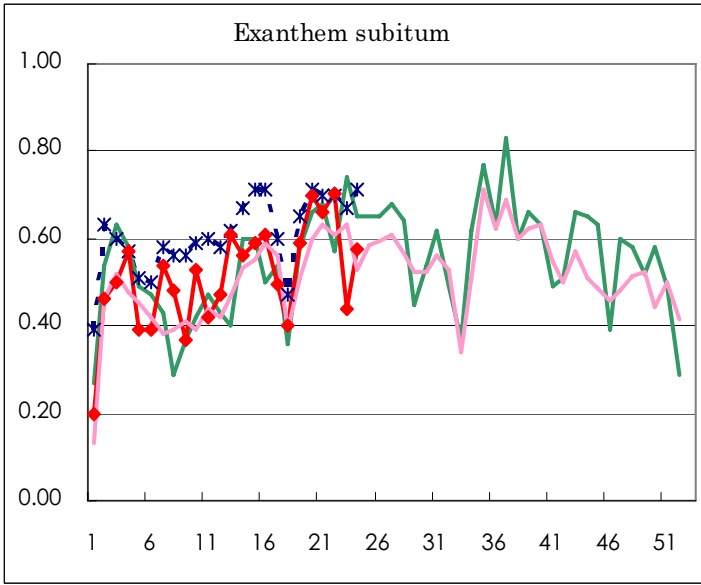
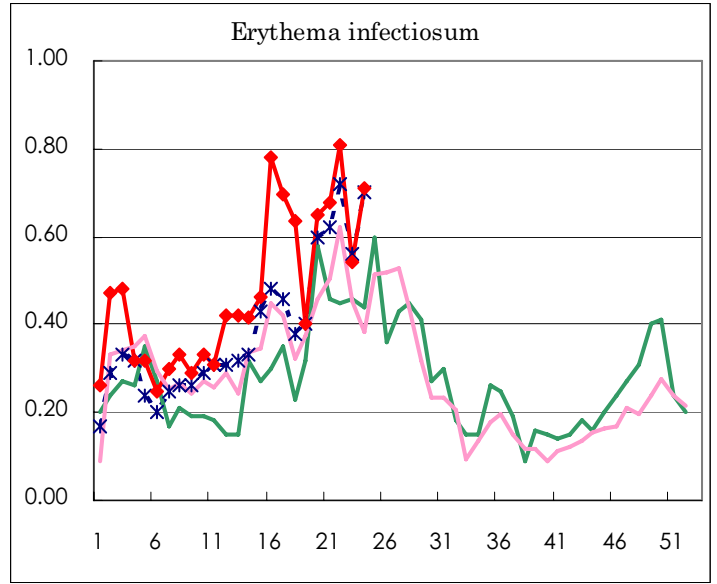
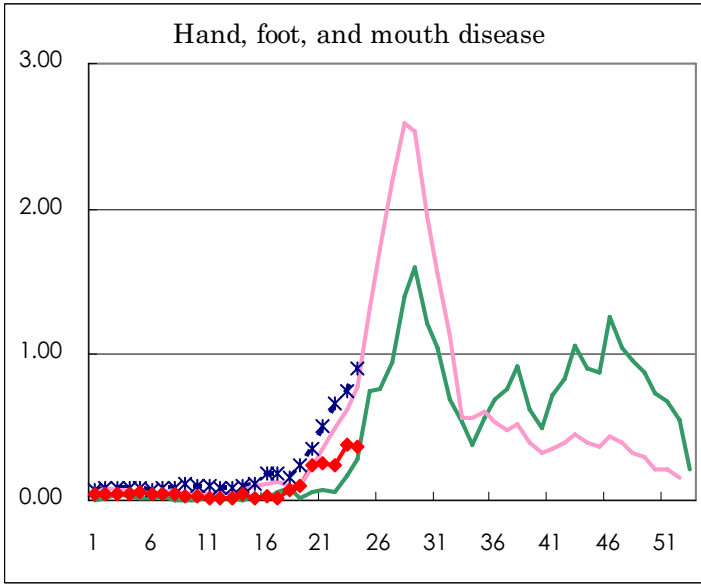
Number of patients with the diseases to be reported  
by the designated clinics and hospitals

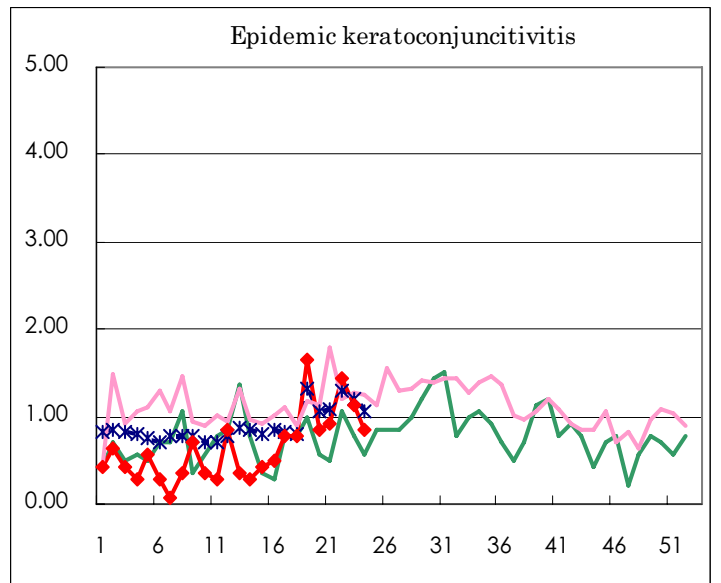
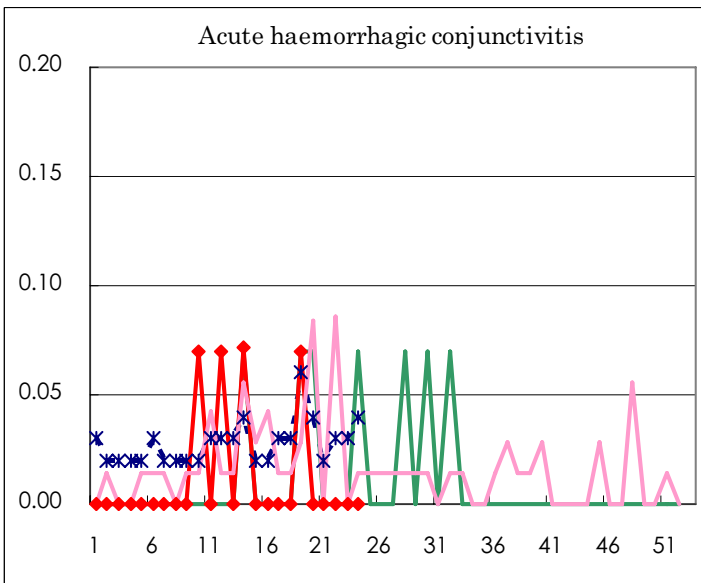
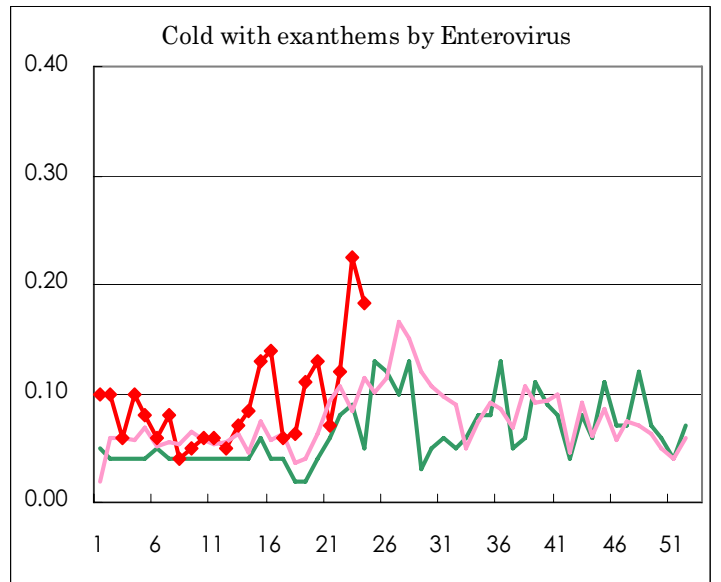
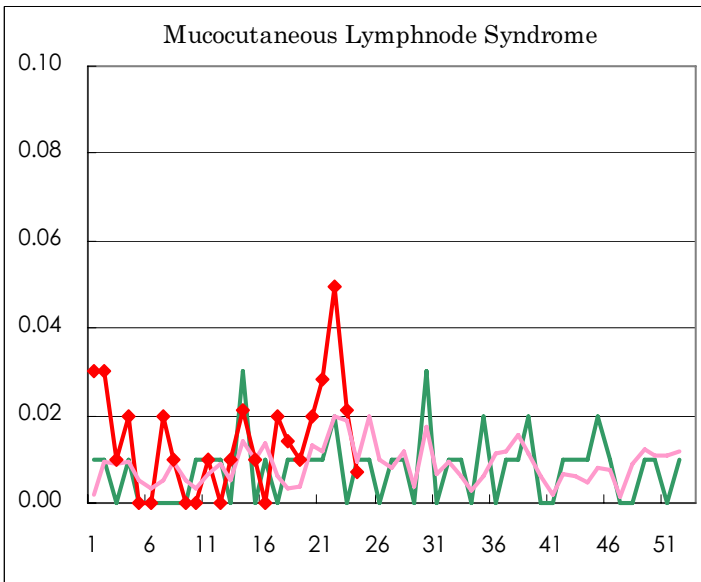
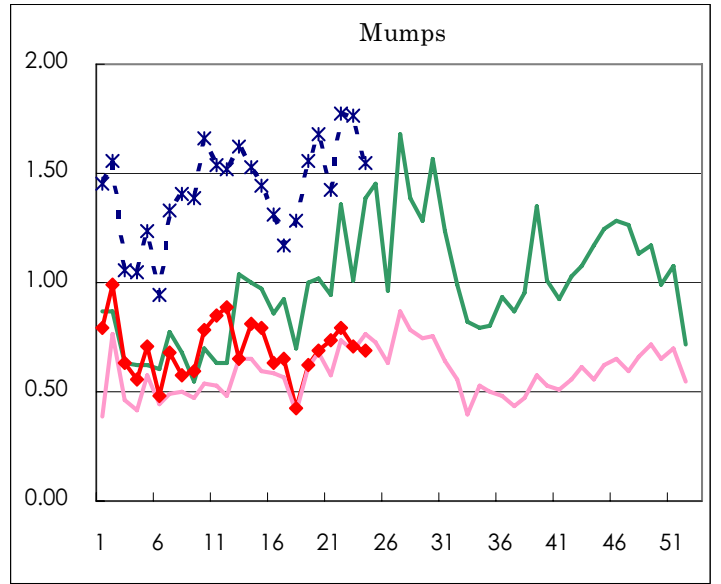
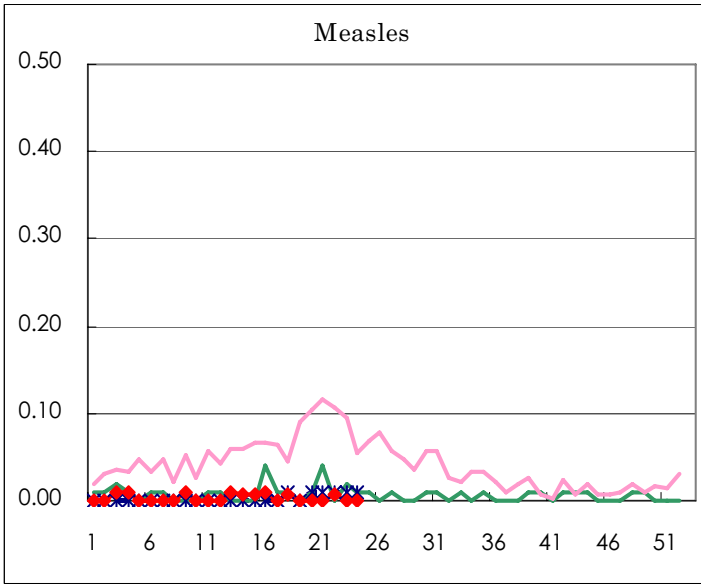
Diseases	Sex	2006				Total
		21st	22nd	23rd	24th	
Respiratory syncytial virus infection	M	6	1	3		10
	F	2	1	1		4
Influenza	M	8	1	2	<b>2</b>	13
	F	3	5	1	<b>3</b>	12
Pharyngoconjunctival fever	M	91	75	94	<b>94</b>	354
	F	73	72	81	<b>74</b>	300
Group A streptococcal pharyngitis	M	210	156	161	<b>160</b>	687
	F	150	133	112	<b>132</b>	527
Infectious gastroenteritis	M	361	338	276	<b>285</b>	1,260
	F	340	275	268	<b>249</b>	1,132
Chickenpox	M	152	106	157	<b>116</b>	531
	F	155	107	103	<b>107</b>	472
Hand, foot, and mouth disease	M	26	22	36	<b>31</b>	115
	F	11	13	18	<b>22</b>	64
Erythema infectiosum	M	47	50	45	<b>66</b>	208
	F	49	65	32	<b>35</b>	181
Exanthem subitum	M	50	55	29	<b>42</b>	176
	F	44	45	35	<b>40</b>	164
Pertussis	M					
	F			1		1
Rubella	M					
	F	1			<b>2</b>	3
Herpangina	M	120	204	246	<b>354</b>	924
	F	103	151	255	<b>329</b>	838
Measles	M		1			1
	F					
Mumps	M	42	58	43	<b>49</b>	192
	F	62	54	61	<b>49</b>	226
Cold with exanthems by Enterovirus	M	6	5	10	<b>12</b>	33
	F	4	12	22	<b>14</b>	52
Mucocutaneous Lymphnode Syndrome	M	2	5		<b>1</b>	8
	F	2	2	3		7
Acute hemorrhagic conjunctivitis	M					
	F					
Epidemic keratoconjunctivitis	M	5	13	7	<b>7</b>	32
	F	8	7	9	<b>5</b>	29
Bacterial meningitis	M				<b>1</b>	1
	F			1		1
Aseptic meningitis	M				<b>1</b>	1
	F					
Mycoplasma pneumonia	M			1	<b>1</b>	2
	F	1	1		<b>1</b>	3
Chlamydial pneumonia (excluding psittacosis)	M					
	F					
Measles in adults	M					
	F					

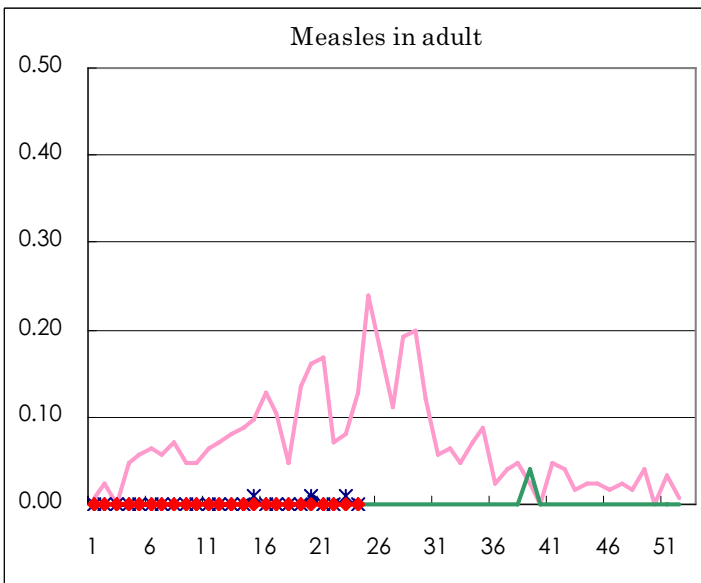
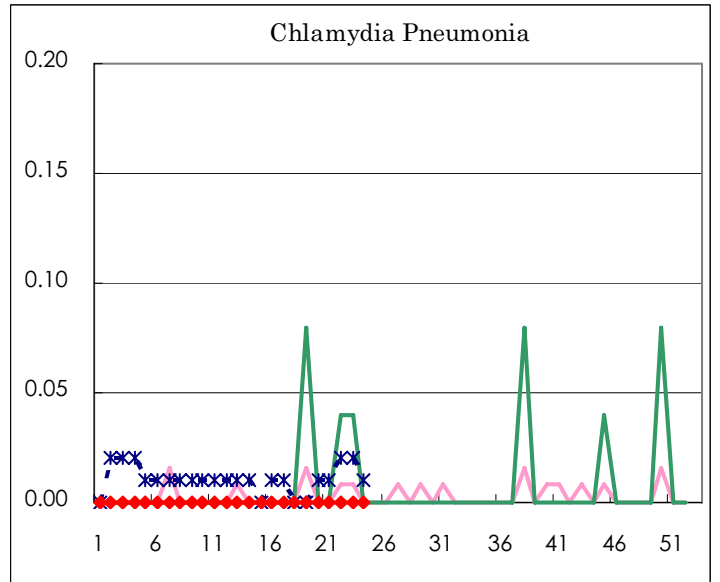
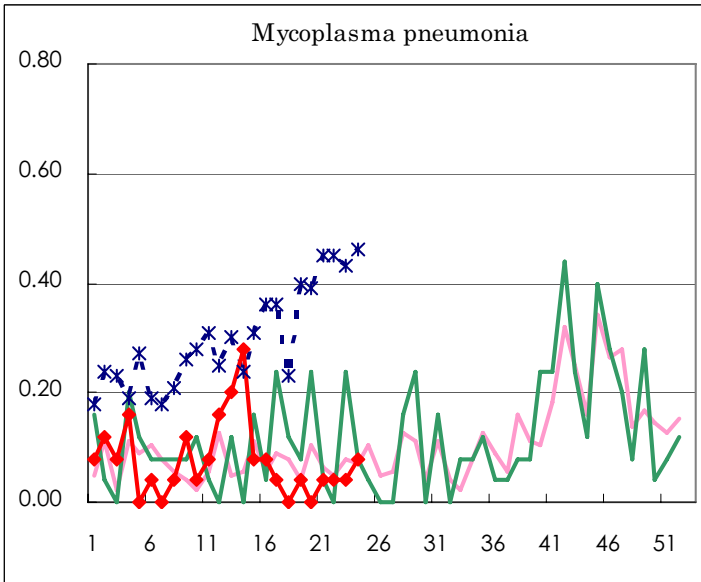
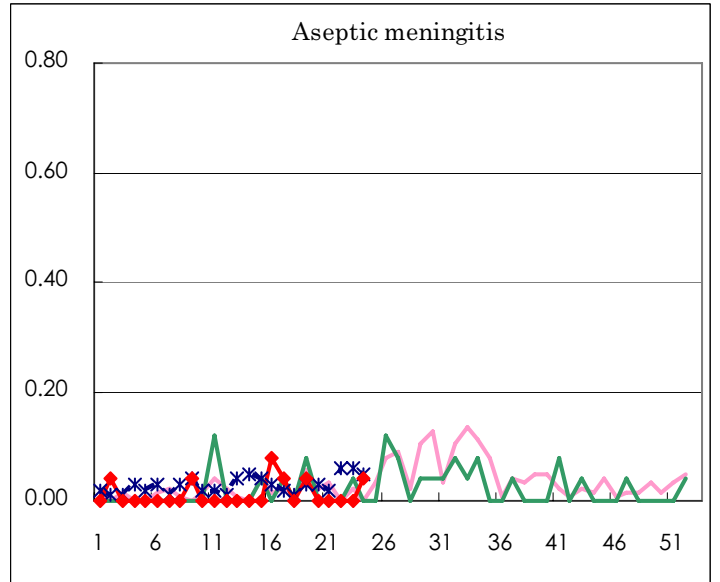
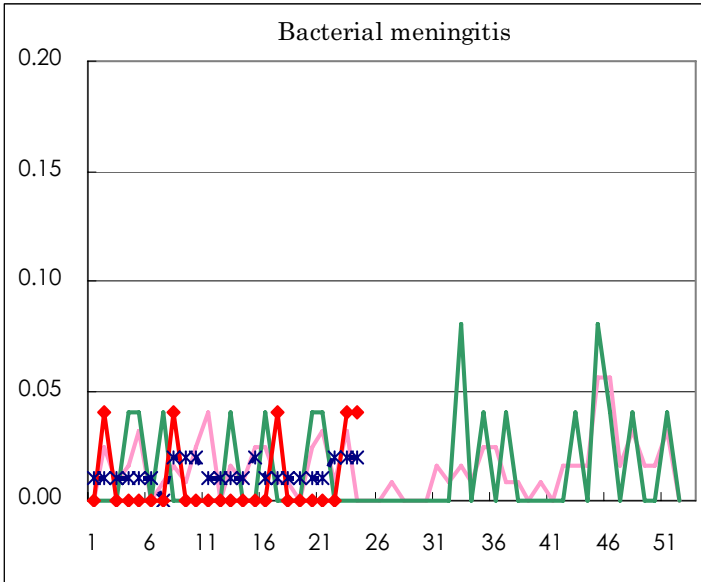
( Blank means 0. )

# Disease Trend Graph (weekly reported cases per fixed-point in comparison)









Tokyo Metropolitan Government  
**Infectious Disease Surveillance Center**