

4 July 2006 / Number 25

- Number of patients with the diseases required notifying all the cases
- Number of patients with the diseases to be reported by the sentinel clinics and hospitals
- Disease trend graph (weekly reported cases per sentinel in comparison)

## Surveillance System in Tokyo, Japan

### The infectious diseases which all physicians must report

All physicians must report to health centers the incidence of the diseases which are shown at page one. Health centers electronically report the individual cases to Tokyo Metropolitan Infectious Disease Surveillance Center.

### The infectious diseases required to be reported by the sentinels

The numbers of patients who visit the sentinel clinics or hospitals during a week are reported to health centers in Tokyo. And they electronically report the numbers to Tokyo Metropolitan Infectious Disease Surveillance Center. We have about 260 sentinel clinics and hospitals in Tokyo.

1<sup>st</sup> Week is early January and 52<sup>nd</sup> Week is end of December.

Tokyo Metropolitan Infectious Disease Surveillance Center  
Tokyo Metropolitan Institute of Public Health

TEL:81-3-3363-3213 FAX:81-3-5332-7365  
e-mail:[idsc@tokyo-eiken.go.jp](mailto:idsc@tokyo-eiken.go.jp)  
URL:[idsc.tokyo-eiken.go.jp/](http://idsc.tokyo-eiken.go.jp/)

## Number of patients with the diseases which all physicians must report

Category	Diseases	Tokyo				Japan		
		22nd	23rd	24th	25th	Total	25th	Total
I	Ebola hemorrhagic fever							
	Crimean-Congo hemorrhagic fever							
	Severe acute respiratory syndrome							
	Smallpox							
	Plague							
	Marburg disease							
	Lassa fever							
II	Acute poliomyelitis							
	Cholera		2		1	4	1	19
	Shigellosis				1	29	5	198
	Diphtheria							
	Typhoid fever				1	13	1	40
	Paratyphoid fever					9		13
III	Enterohemorrhagic <i>Escherichia coli</i> infection	2	3	8	3	47	67	654
IV	Hepatitis E	1				1		36
	West Nile fever							
	Hepatitis A	1	1		1	22	4	201
	Echinococcosis						1	10
	Yellow fever							
	Psittacosis					3	1	14
	Relapsing fever							
	Q fever							
	Rabies							
	High pathogenic avian influenza							
	Coccidioidomycosis							1
	Monkeypox							
	Hemorrhagic fever with renal syndrome							
	Anthrax							
	Scrub typhus (Tsutsugamushi disease)						15	123
	Dengue fever					4	1	18
	Nipah virus infection							
	Japanese spotted fever						1	8
	Japanese encephalitis							
	Hantavirus pulmonary syndrome							
	B virus disease							
Brucellosis					1		2	
Epidemic typhus								
Botulism							1	
Malaria					7		23	
Tularemia								
Lyme disease							1	
Lyssavirus infection								
Legionellosis	3	2	3	1	28	7	167	
Leptospirosis								
V	Amebiasis	5	3	2	4	84	5	298
	Acute viral hepatitis(excluding Hepatitis A,Hepatitis E)		1			17	2	102
	Acute encephalitis					4	3	89
	Cryptosporidiosis					5		7
	Creutzfeldt-Jakob Disease					9		79
	Sever invasive streptococcal infections		1	1	1	8	3	60
	Acquired immunodeficiency syndrome	14	4	10	8	213	23	530
	Giardiasis		1		2	13	2	36
	Meningococcal meningitis					1	1	7
	Congenital rubella syndrome							
	Syphilis	3		8		48	8	271
	Tetanus		1			3		33
	Vancomycin-resistant <i>Staphylococcus aureus</i> infection							
	Vancomycin-resistant <i>enterococcus</i> infection					4		36

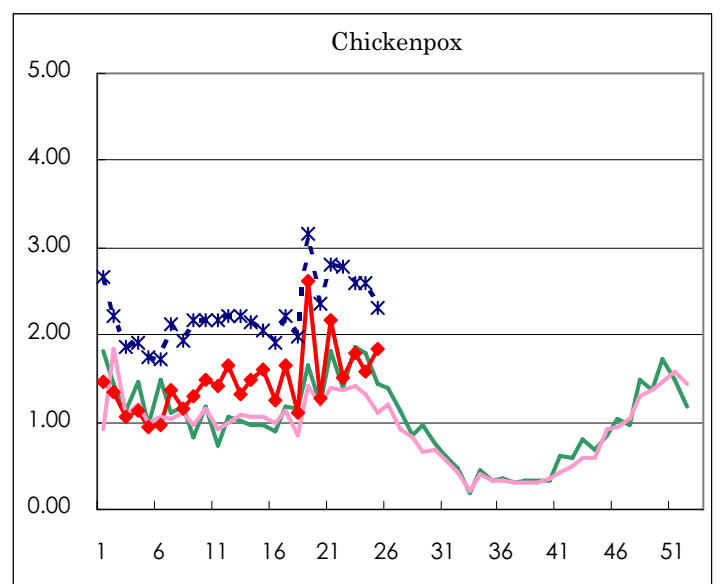
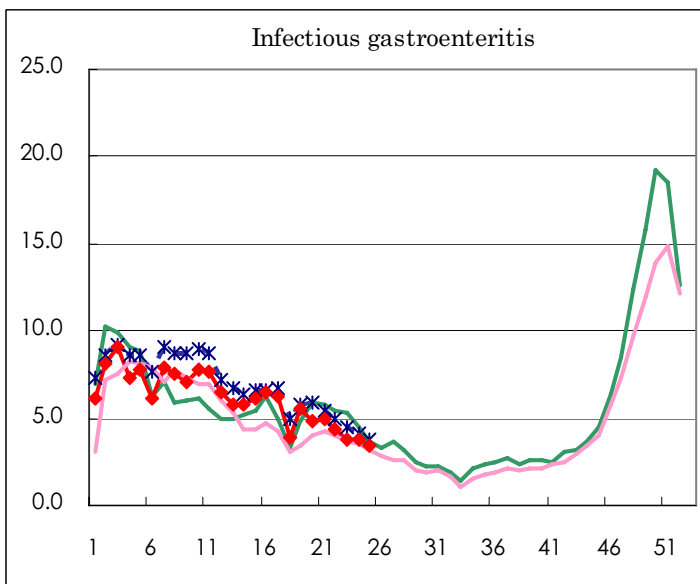
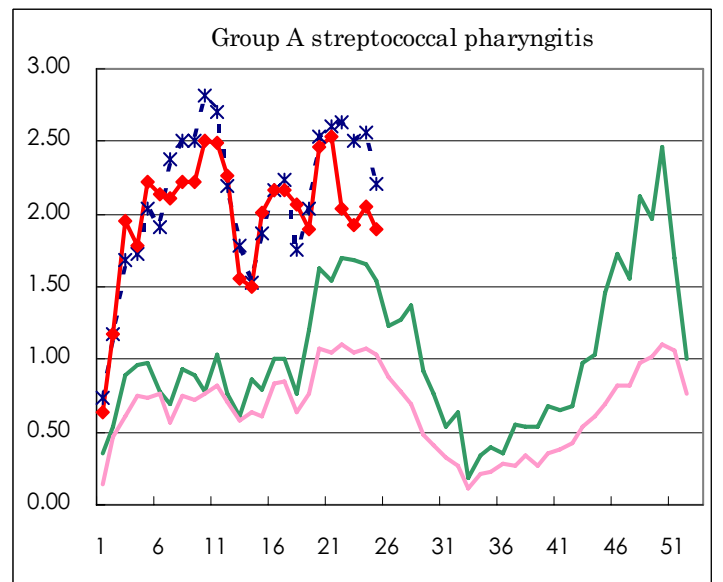
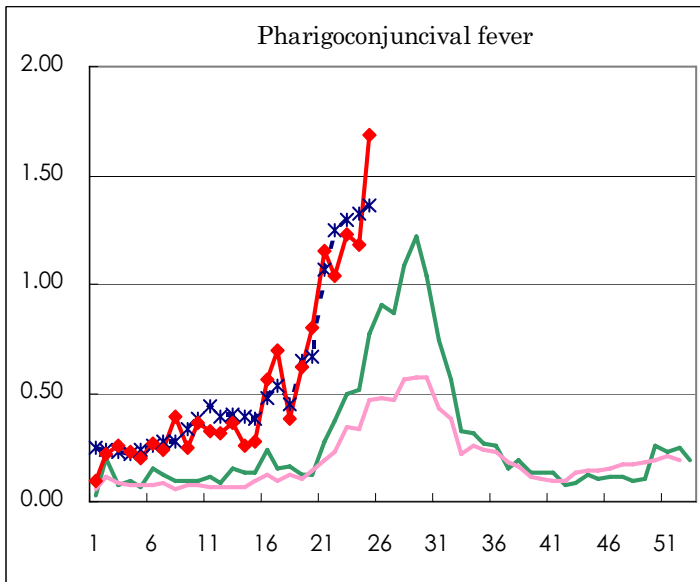
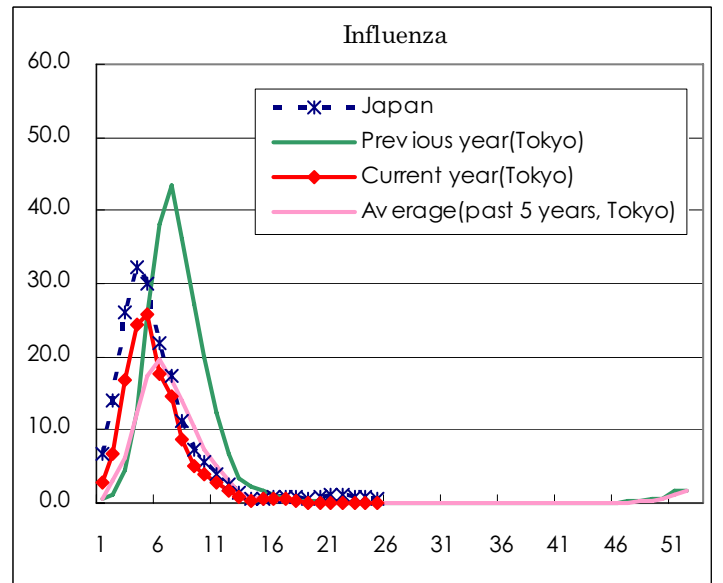
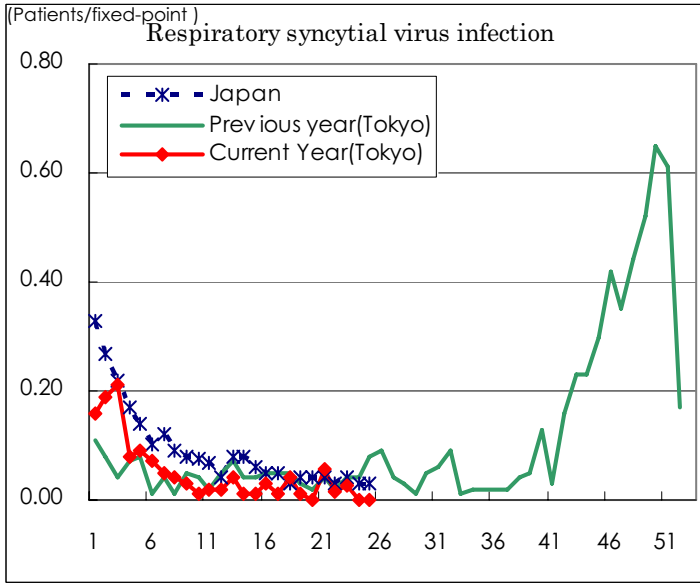
( Blank means 0. )

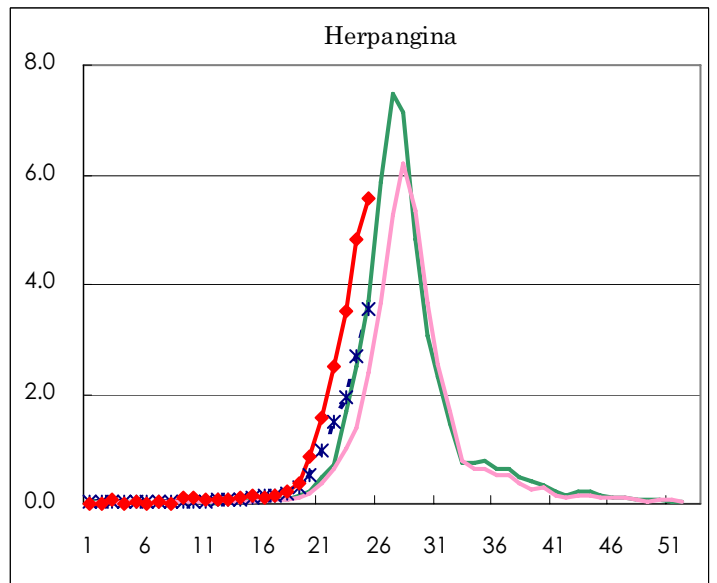
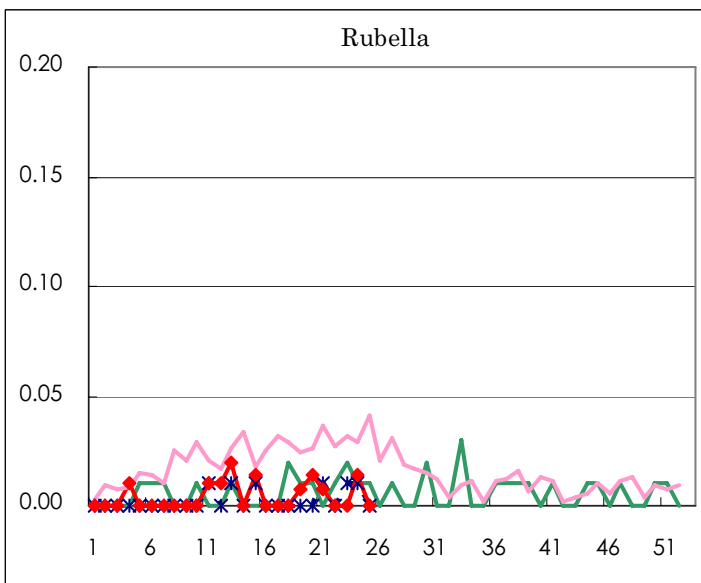
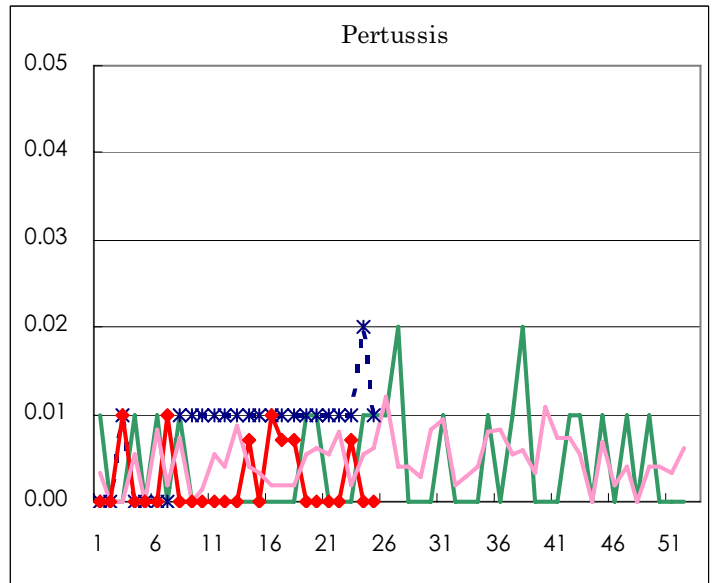
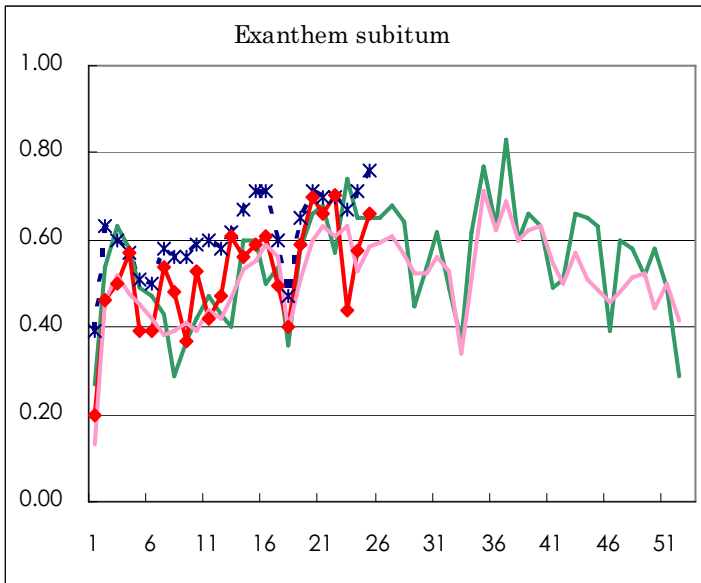
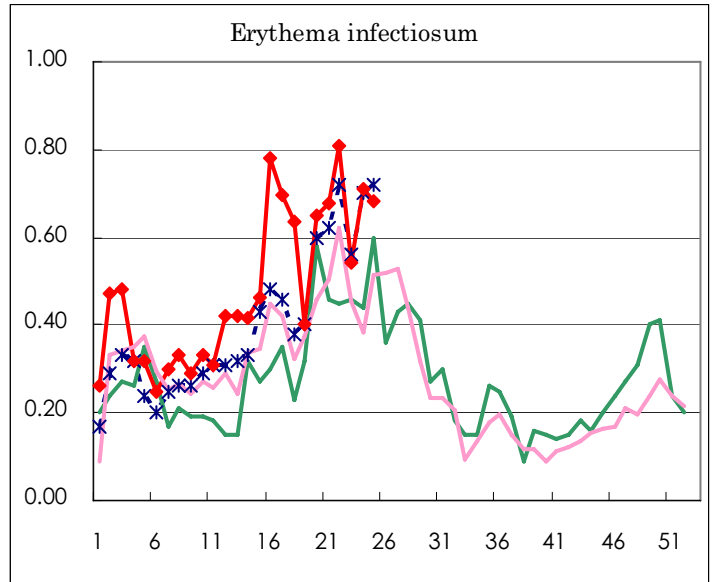
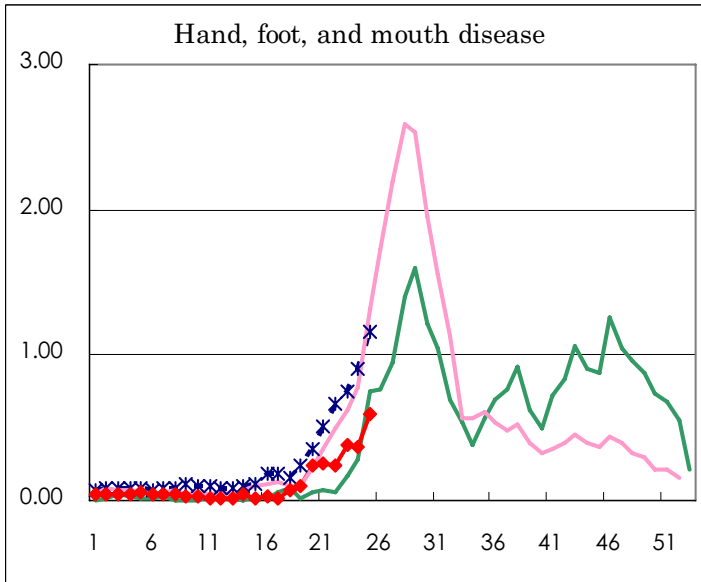
Number of patients with the diseases to be reported  
by the designated clinics and hospitals

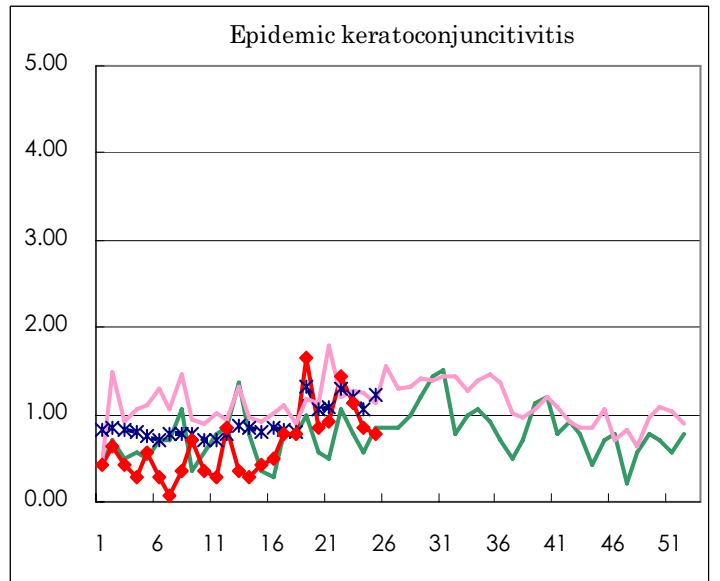
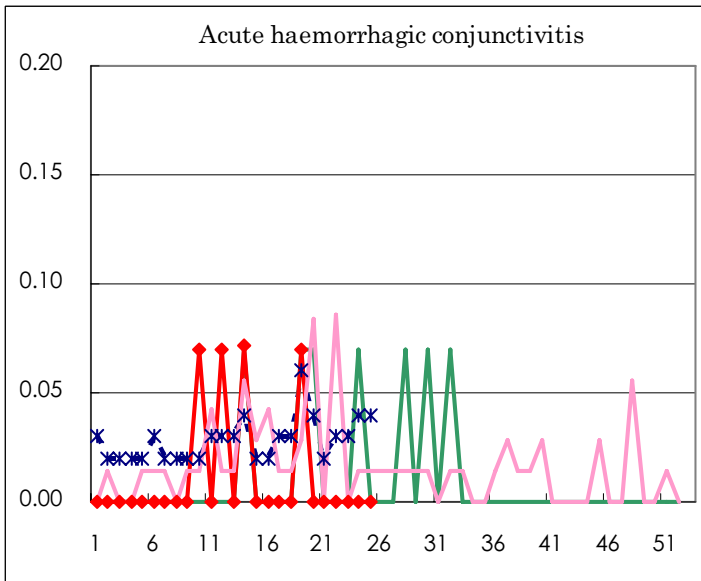
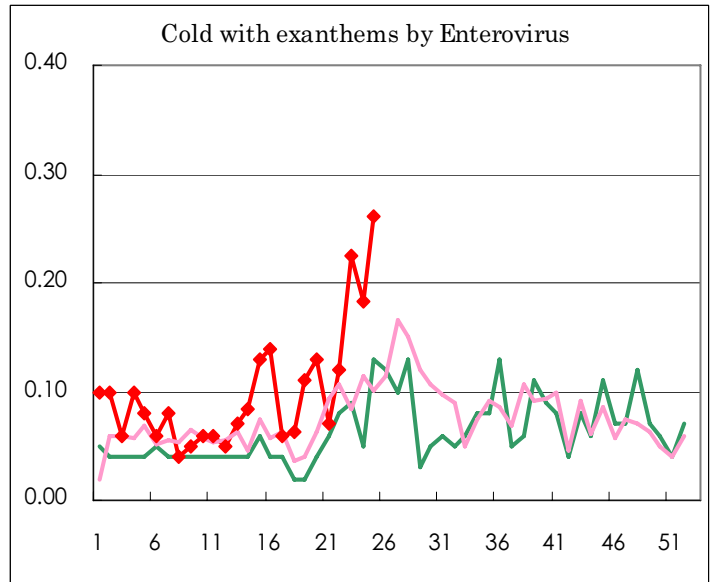
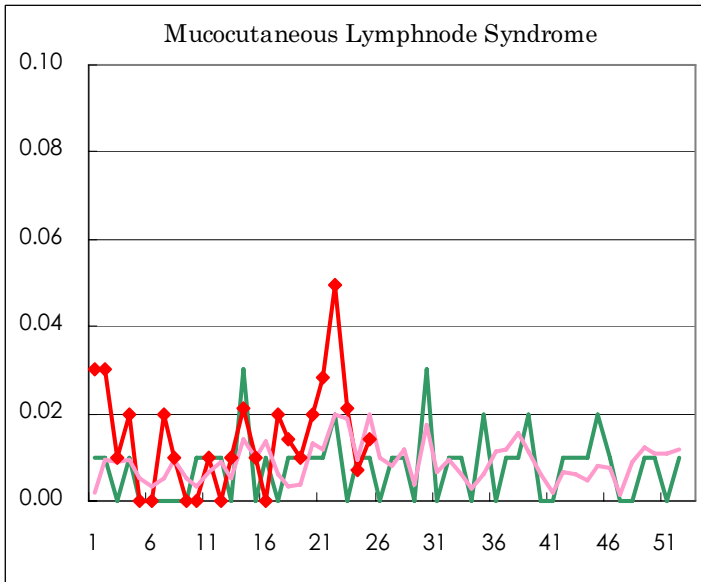
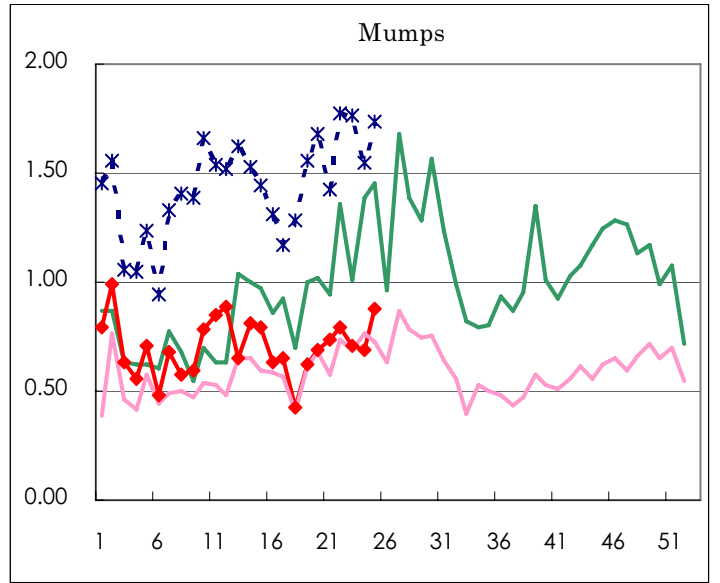
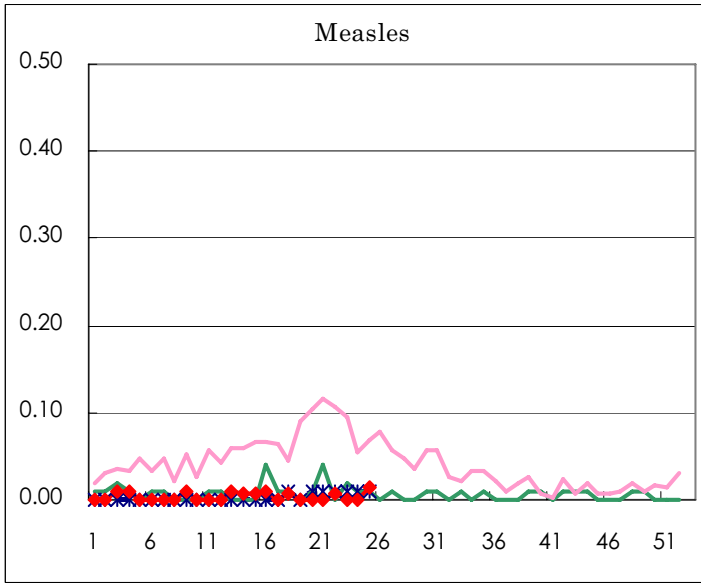
Diseases	Sex	2006				Total
		22nd	23rd	24th	25th	
Respiratory syncytial virus infection	M	1	3			4
	F	1	1			2
Influenza	M	1	2	2	1	6
	F	5	1	3	2	11
Pharyngoconjunctival fever	M	75	94	94	127	390
	F	72	81	74	112	339
Group A streptococcal pharyngitis	M	156	161	160	150	627
	F	133	112	132	119	496
Infectious gastroenteritis	M	338	276	285	276	1,175
	F	275	268	249	214	1,006
Chickenpox	M	106	157	116	140	519
	F	107	103	107	122	439
Hand, foot, and mouth disease	M	22	36	31	50	139
	F	13	18	22	34	87
Erythema infectiosum	M	50	45	66	48	209
	F	65	32	35	49	181
Exanthem subitum	M	55	29	42	54	180
	F	45	35	40	40	160
Pertussis	M					
	F		1			1
Rubella	M					
	F			2		2
Herpangina	M	204	246	354	435	1,239
	F	151	255	329	355	1,090
Measles	M	1			1	2
	F				1	1
Mumps	M	58	43	49	66	216
	F	54	61	49	59	223
Cold with exanthems by Enterovirus	M	5	10	12	23	50
	F	12	22	14	14	62
Mucocutaneous Lymphnode Syndrome	M	5		1	2	8
	F	2	3			5
Acute hemorrhagic conjunctivitis	M					
	F					
Epidemic keratoconjunctivitis	M	13	7	7	7	34
	F	7	9	5	4	25
Bacterial meningitis	M			1		1
	F		1			1
Aseptic meningitis	M			1	1	2
	F					
Mycoplasma pneumonia	M		1	1	2	4
	F	1		1		2
Chlamydial pneumonia (excluding psittacosis)	M					
	F					
Measles in adults	M					
	F					

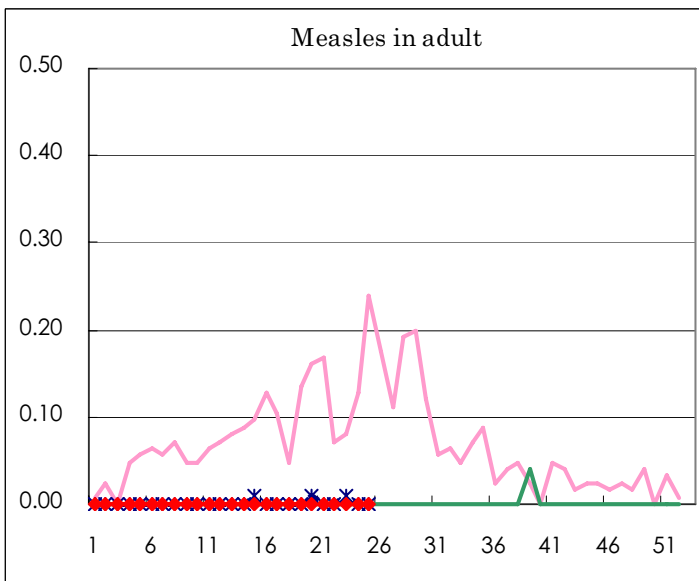
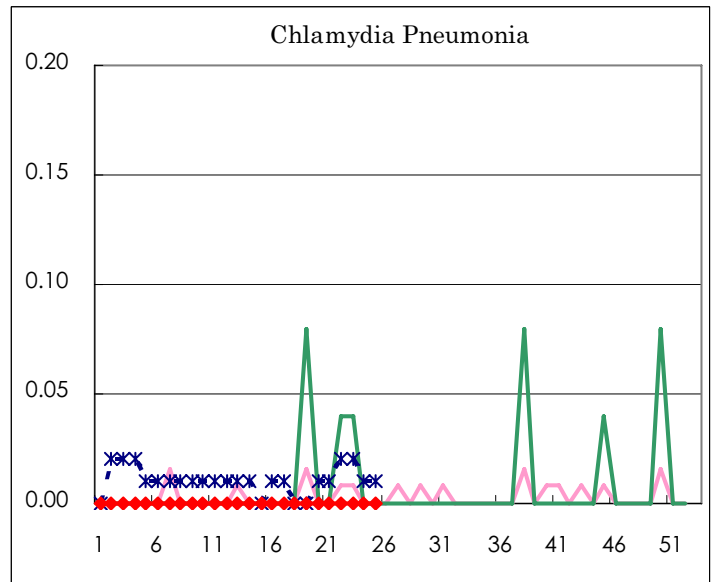
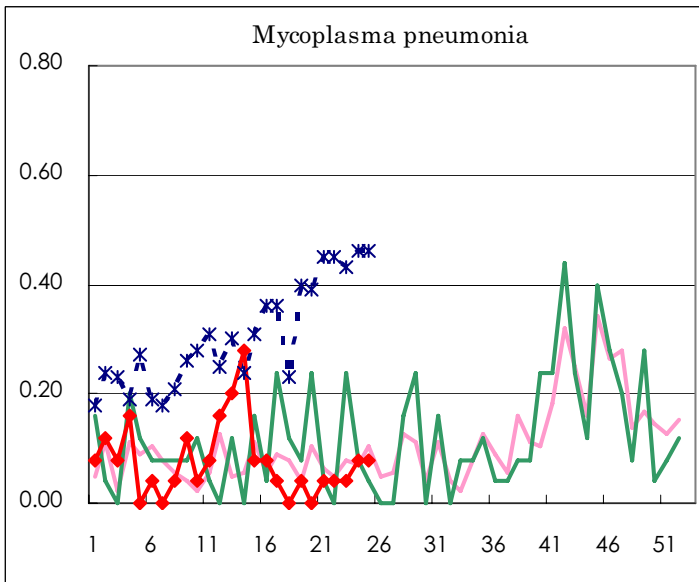
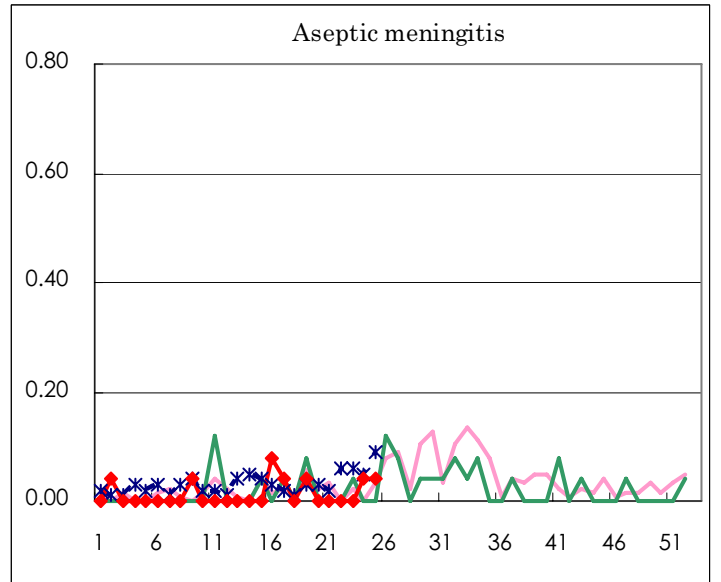
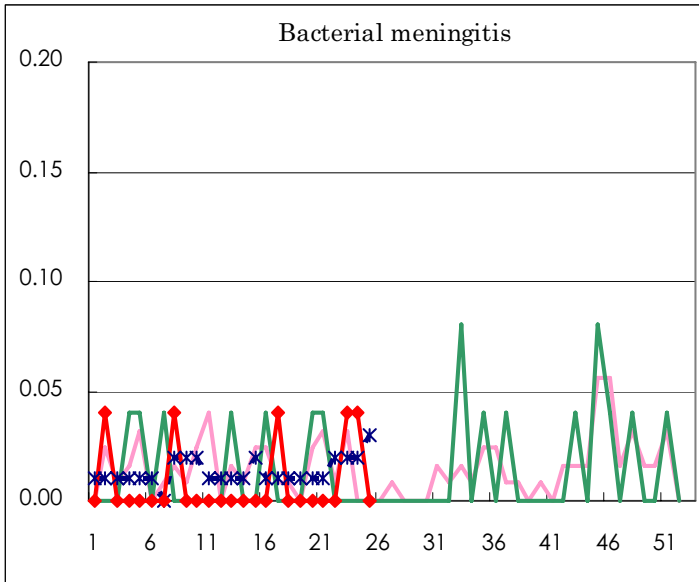
( Blank means 0. )

# Disease Trend Graph (weekly reported cases per fixed-point in comparison)









Tokyo Metropolitan Government  
**Infectious Disease Surveillance Center**