

INFECTIOUS DISEASES WEEKLY REPORT

TOKYO IDWR

Tokyo Metropolitan Institute of Public Health

18 July 2006 / Number 27

- Number of patients with the diseases required notifying all the cases
- Number of patients with the diseases to be reported by the sentinel clinics and hospitals
- Disease trend graph (weekly reported cases per sentinel in comparison)

Surveillance System in Tokyo, Japan

The infectious diseases which all physicians must report

All physicians must report to health centers the incidence of the diseases which are shown at page one. Health centers electronically report the individual cases to Tokyo Metropolitan Infectious Disease Surveillance Center.

The infectious diseases required to be reported by the sentinels

The numbers of patients who visit the sentinel clinics or hospitals during a week are reported to health centers in Tokyo. And they electronically report the numbers to Tokyo Metropolitan Infectious Disease Surveillance Center. We have about 260 sentinel clinics and hospitals in Tokyo.

1st Week is early January and 52nd Week is end of December.

Tokyo Metropolitan Infectious Disease Surveillance Center
Tokyo Metropolitan Institute of Public Health

TEL:81-3-3363-3213 FAX:81-3-5332-7365
e-mail:idsc@tokyo-eiken.go.jp
URL:idsc.tokyo-eiken.go.jp/

Number of patients with the diseases which all physicians must report

Category	Diseases	Tokyo				Japan		
		24th	25th	26th	27th	Total	27th	Total
I	Ebola hemorrhagic fever							
	Crimean-Congo hemorrhagic fever							
	Severe acute respiratory syndrome							
	Smallpox							
	Plague							
	Marburg disease							
	Lassa fever							
II	Acute poliomyelitis							
	Cholera		1			4	5	24
	Shigellosis		1	1		30	3	208
	Diphtheria							
	Typhoid fever		1			13		43
	Paratyphoid fever					9	1	14
III	Enterohemorrhagic <i>Escherichia coli</i> infection	8	3	16	11	74	105	864
IV	Hepatitis E			1		2		37
	West Nile fever							
	Hepatitis A		1		1	23	2	216
	Echinococcosis							12
	Yellow fever							
	Psittacosis					3		15
	Relapsing fever							
	Q fever							1
	Rabies							
	High pathogenic avian influenza							
	Coccidioidomycosis							1
	Monkeypox							
	Hemorrhagic fever with renal syndrome							
	Anthrax							
	Scrub typhus (Tsutsugamushi disease)						5	152
	Dengue fever				1	5	1	20
	Nipah virus infection							
	Japanese spotted fever						2	10
	Japanese encephalitis							
	Hantavirus pulmonary syndrome							
	B virus disease							
Brucellosis					1		2	
Epidemic typhus								
Botulism							1	
Malaria			1		8	2	26	
Tularemia								
Lyme disease							2	
Lyssavirus infection								
Legionellosis	3	1	3	1	32	9	193	
Leptospirosis								
V	Amebiasis	2	4	6	5	95	10	335
	Acute viral hepatitis(excluding Hepatitis A,Hepatitis E)			3		20	2	120
	Acute encephalitis					4	2	91
	Cryptosporidiosis					5	1	7
	Creutzfeldt-Jakob Disease				1	10	3	80
	Sever invasive streptococcal infections	1	1	2		10	2	68
	Acquired immunodeficiency syndrome	10	8	14	9	236	12	604
	Giardiasis		2			13		43
	Meningococcal meningitis					1		9
	Congenital rubella syndrome							
	Syphilis	8		2	3	53	9	302
	Tetanus					3	3	41
	Vancomycin-resistant <i>Staphylococcus aureus</i> infection							
	Vancomycin-resistant <i>enterococcus</i> infection				1	5		38

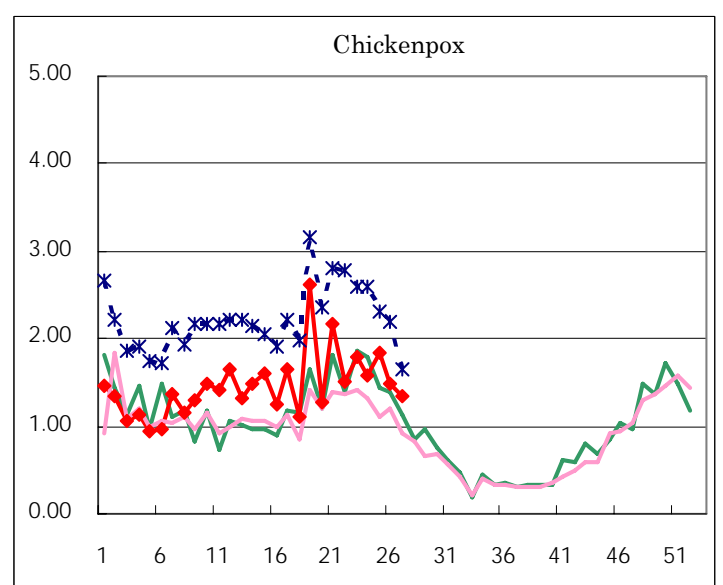
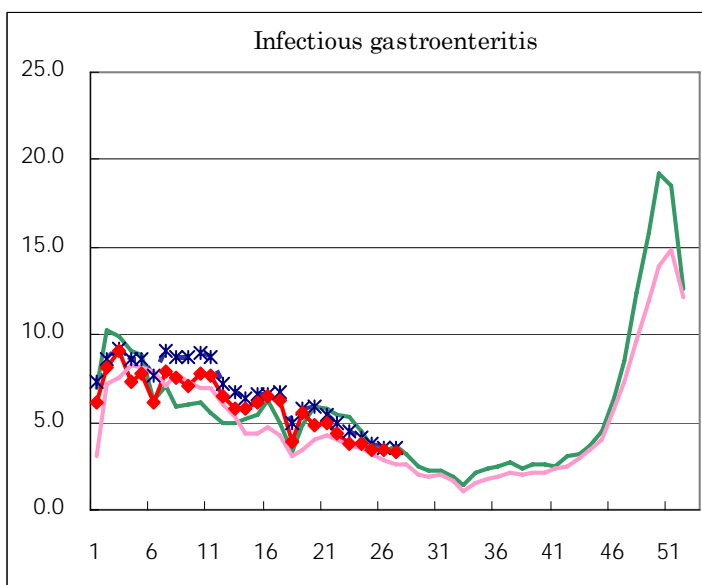
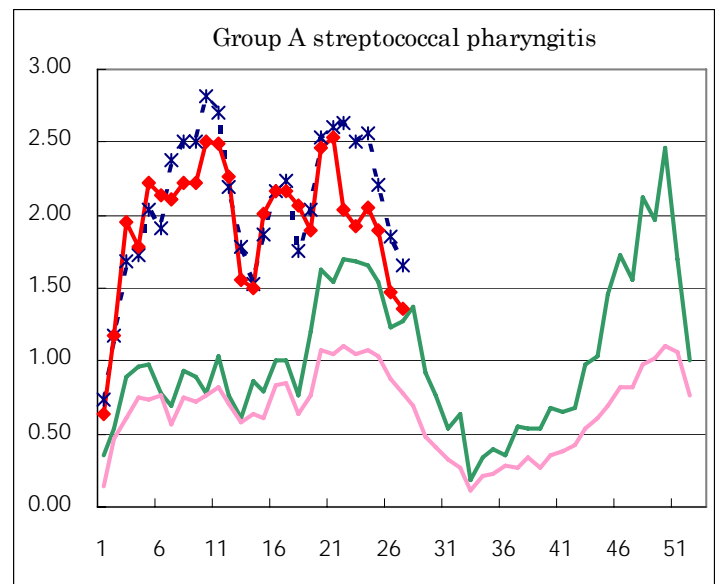
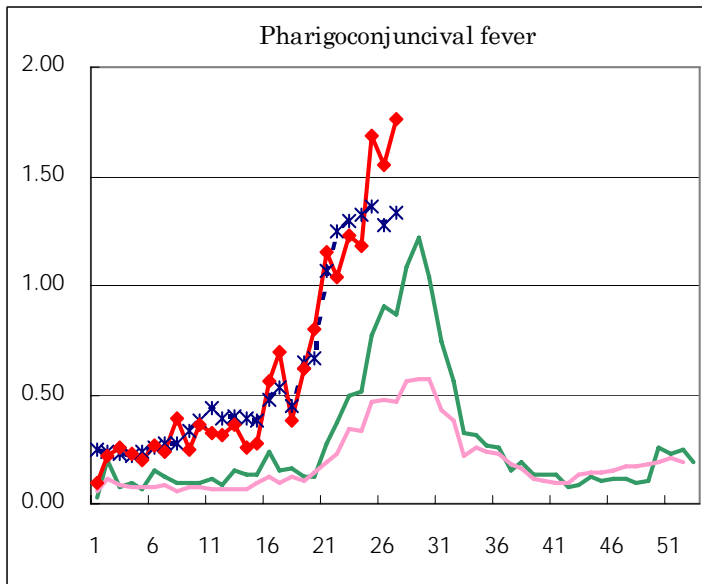
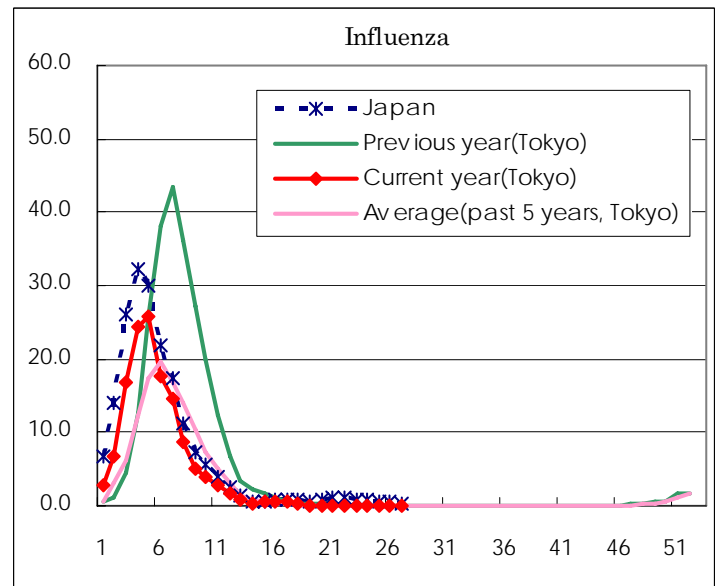
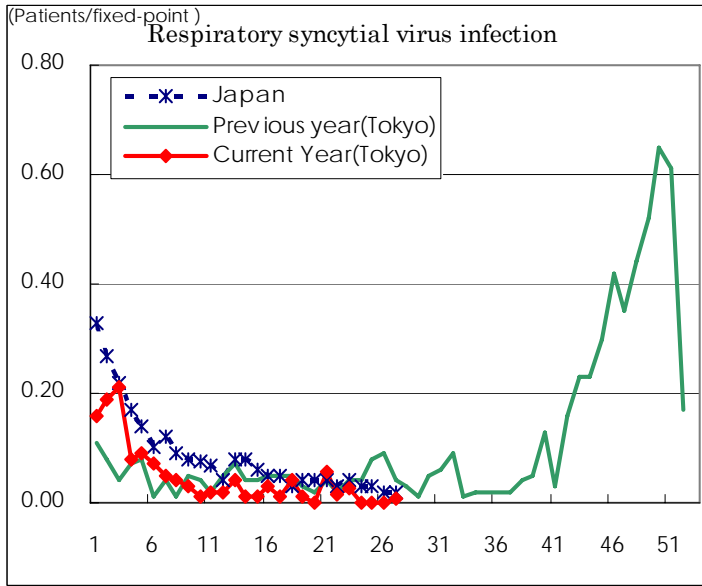
(Blank means 0.)

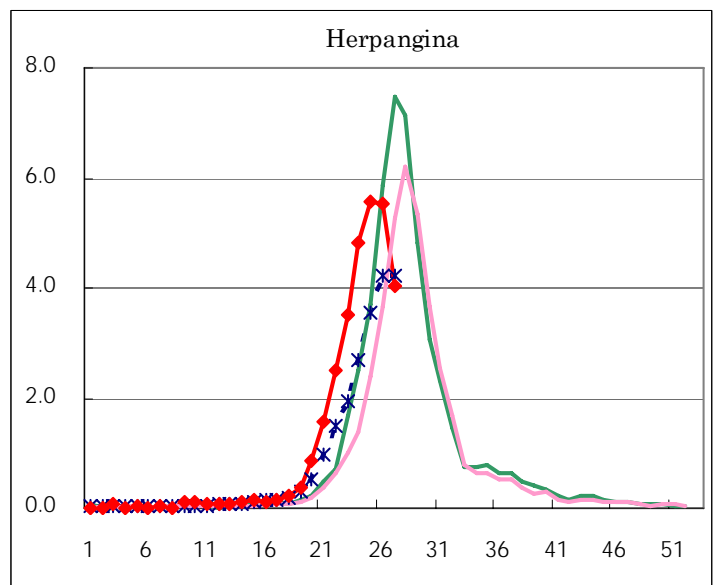
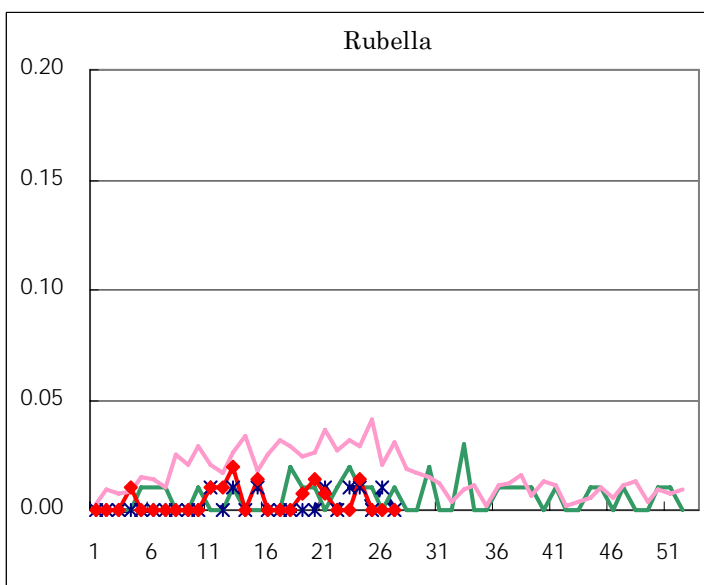
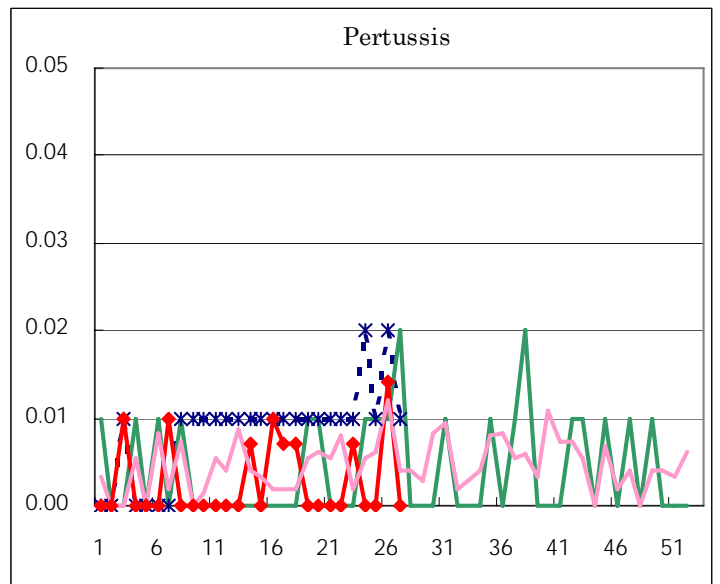
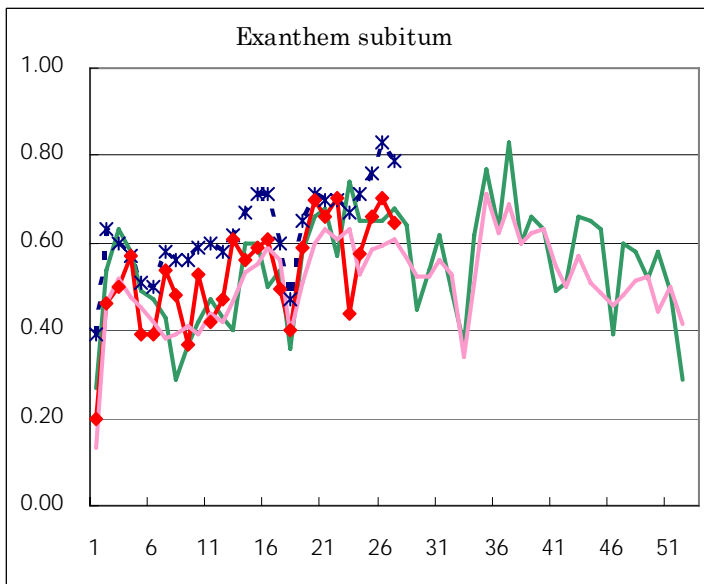
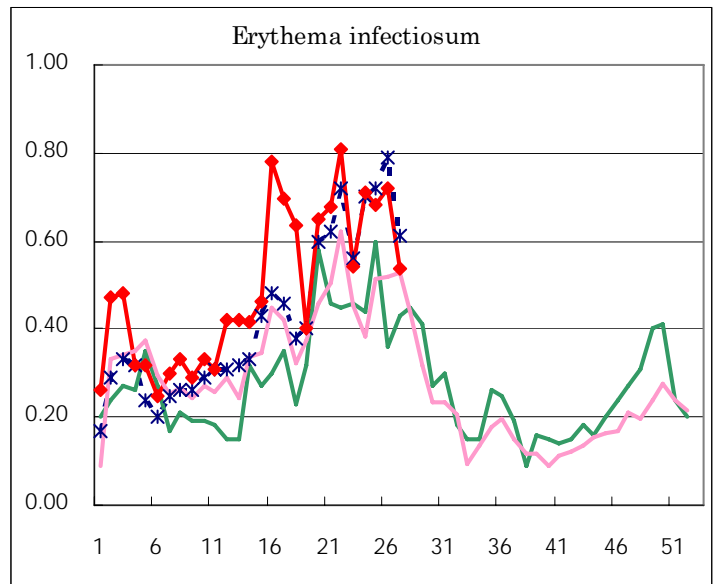
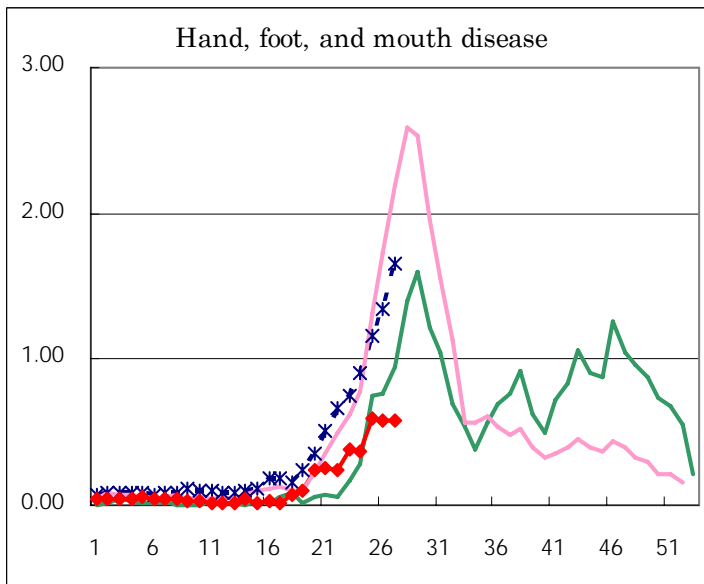
Number of patients with the diseases to be reported
by the designated clinics and hospitals

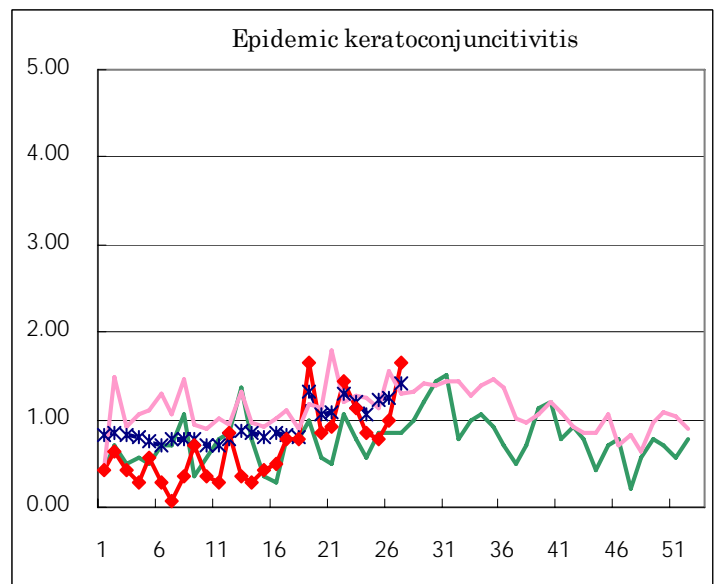
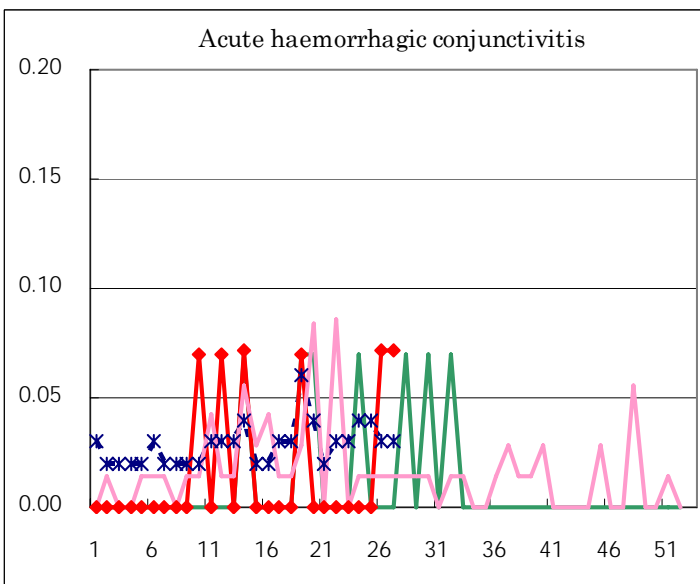
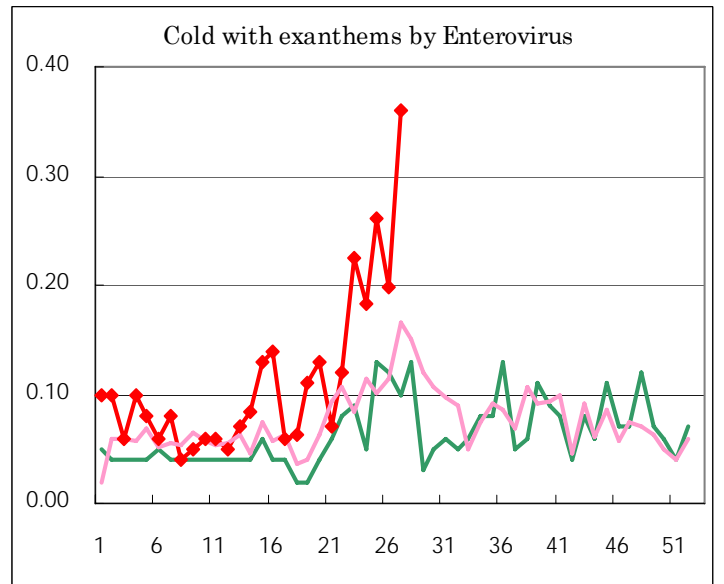
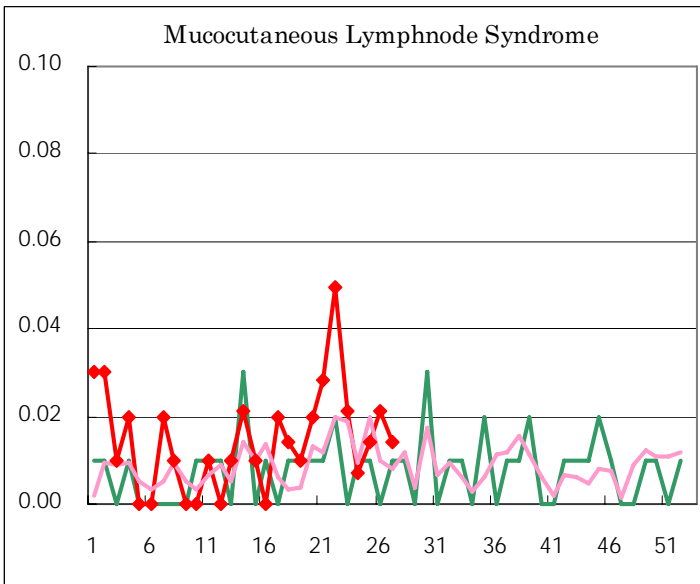
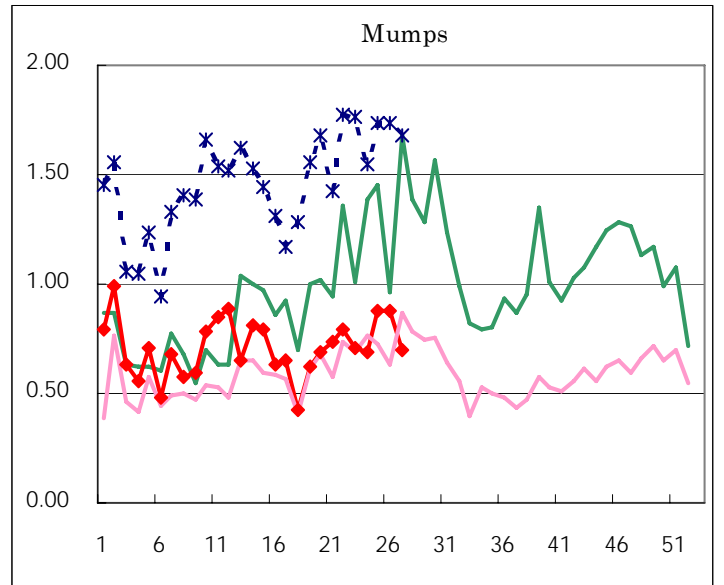
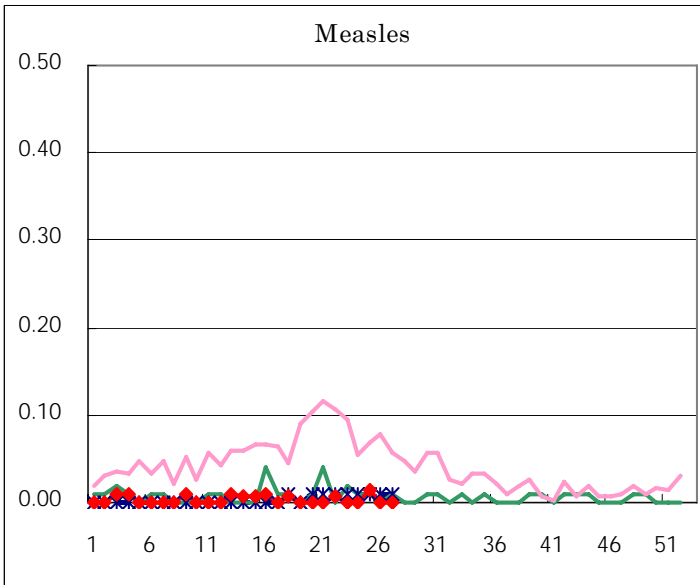
Diseases	Sex	2006				Total
		24th	25th	26th	27th	
Respiratory syncytial virus infection	M				1	1
	F					
Influenza	M	2	1	2		5
	F	3	2			5
Pharyngoconjunctival fever	M	94	127	120	125	466
	F	74	112	101	125	412
Group A streptococcal pharyngitis	M	160	150	107	112	529
	F	132	119	101	80	432
Infectious gastroenteritis	M	285	276	266	251	1,078
	F	249	214	219	214	896
Chickenpox	M	116	140	110	92	458
	F	107	122	100	98	427
Hand, foot, and mouth disease	M	31	50	53	48	182
	F	22	34	30	35	121
Erythema infectiosum	M	66	48	52	36	202
	F	35	49	50	40	174
Exanthem subitum	M	42	54	57	48	201
	F	40	40	43	44	167
Pertussis	M			1		1
	F			1		1
Rubella	M					
	F	2				2
Herpangina	M	354	435	417	271	1,477
	F	329	355	367	300	1,351
Measles	M		1			1
	F		1			1
Mumps	M	49	66	57	45	217
	F	49	59	68	54	230
Cold with exanthems by Enterovirus	M	12	23	14	29	78
	F	14	14	14	22	64
Mucocutaneous Lymphnode Syndrome	M	1	2	1	1	5
	F			2	1	3
Acute hemorrhagic conjunctivitis	M			1	1	2
	F					
Epidemic keratoconjunctivitis	M	7	7	9	10	33
	F	5	4	5	13	27
Bacterial meningitis	M	1				1
	F					
Aseptic meningitis	M	1	1		1	3
	F				1	1
Mycoplasma pneumonia	M	1	2	1		4
	F	1			1	2
Chlamydial pneumonia (excluding psittacosis)	M					
	F					
Measles in adults	M					
	F					

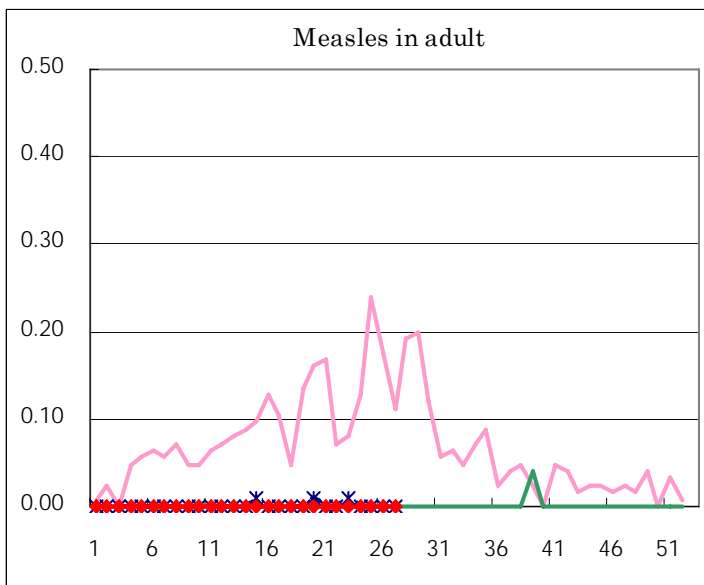
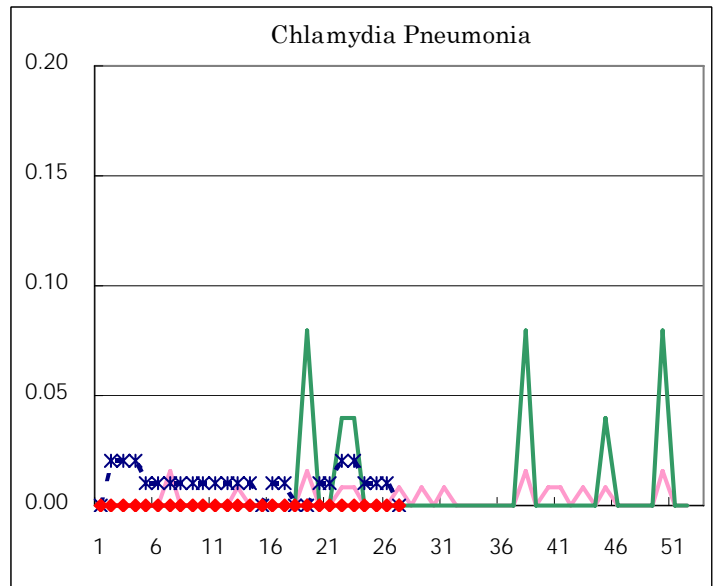
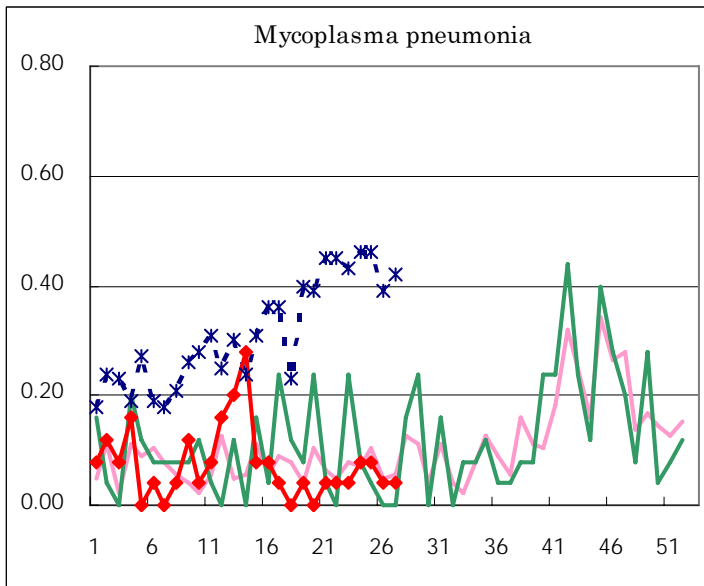
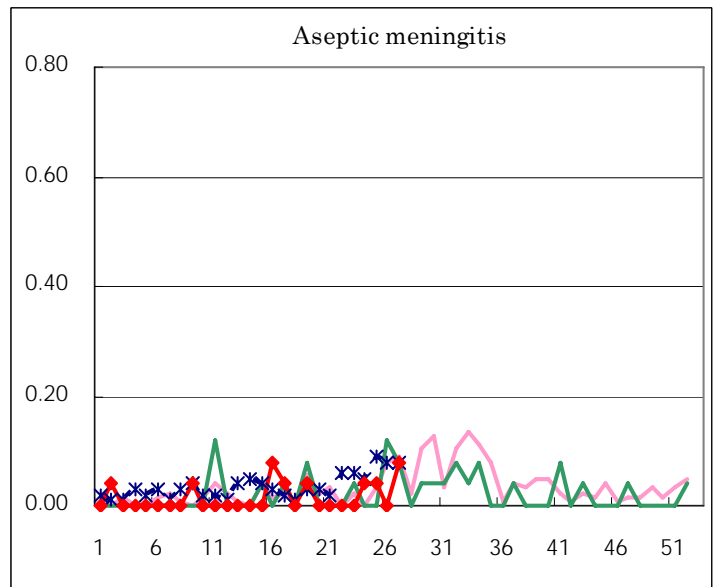
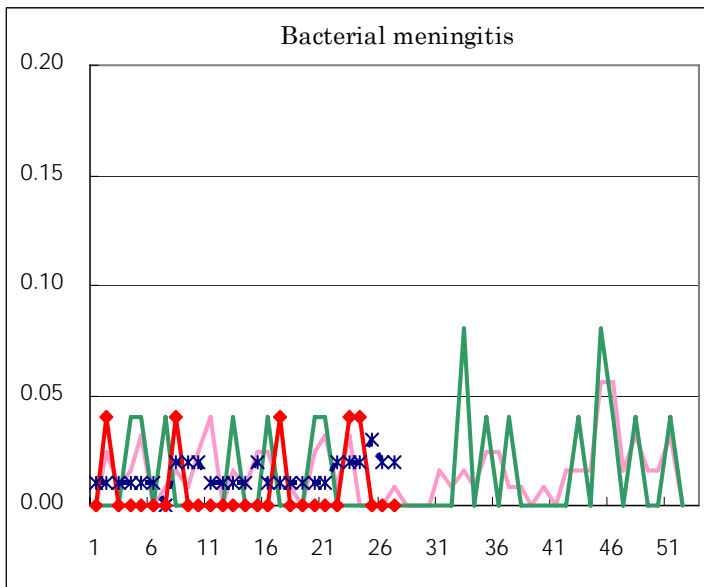
(Blank means 0.)

Disease Trend Graph (weekly reported cases per fixed-point in comparison)









Tokyo Metropolitan Government
Infectious Disease Surveillance Center