

INFECTIOUS DISEASES WEEKLY REPORT

# TOKYO IDWR

Tokyo Metropolitan Institute of Public Health

25 July 2006 / Number 28

- Number of patients with the diseases required notifying all the cases
- Number of patients with the diseases to be reported by the sentinel clinics and hospitals
- Disease trend graph (weekly reported cases per sentinel in comparison)

## Surveillance System in Tokyo, Japan

### The infectious diseases which all physicians must report

All physicians must report to health centers the incidence of the diseases which are shown at page one. Health centers electronically report the individual cases to Tokyo Metropolitan Infectious Disease Surveillance Center.

### The infectious diseases required to be reported by the sentinels

The numbers of patients who visit the sentinel clinics or hospitals during a week are reported to health centers in Tokyo. And they electronically report the numbers to Tokyo Metropolitan Infectious Disease Surveillance Center. We have about 260 sentinel clinics and hospitals in Tokyo.

1<sup>st</sup> Week is early January and 52<sup>nd</sup> Week is end of December.

Tokyo Metropolitan Infectious Disease Surveillance Center  
Tokyo Metropolitan Institute of Public Health

TEL:81-3-3363-3213 FAX:81-3-5332-7365  
e-mail:[idsc@tokyo-eiken.go.jp](mailto:idsc@tokyo-eiken.go.jp)  
URL:[idsc.tokyo-eiken.go.jp/](http://idsc.tokyo-eiken.go.jp/)

## Number of patients with the diseases which all physicians must report

Category	Diseases	Tokyo				Japan		
		25th	26th	27th	28th	Total	28th	Total
I	Ebola hemorrhagic fever							
	Crimean-Congo hemorrhagic fever							
	Severe acute respiratory syndrome							
	Smallpox							
	Plague							
	Marburg disease							
	Lassa fever							
II	Acute poliomyelitis							
	Cholera	1				4		29
	Shigellosis	1	1			30	5	212
	Diphtheria							
	Typhoid fever	1			1	14	2	43
	Paratyphoid fever					9		15
III	Enterohemorrhagic <i>Escherichia coli</i> infection	3	16	11	8	83	122	984
IV	Hepatitis E		1			2	2	38
	West Nile fever							
	Hepatitis A	1		1		23	2	220
	Echinococcosis							13
	Yellow fever							
	Psittacosis					3		15
	Relapsing fever							
	Q fever							1
	Rabies							
	High pathogenic avian influenza							
	Coccidioidomycosis							1
	Monkeypox							
	Hemorrhagic fever with renal syndrome							
	Anthrax							
	Scrub typhus (Tsutsugamushi disease)						4	160
	Dengue fever			1		5	2	21
	Nipah virus infection							
	Japanese spotted fever							12
	Japanese encephalitis							
	Hantavirus pulmonary syndrome							
	B virus disease							
Brucellosis					1		2	
Epidemic typhus								
Botulism							1	
Malaria		1		1	9	2	29	
Tularemia								
Lyme disease							2	
Lyssavirus infection								
Legionellosis	1	3	1		32	7	205	
Leptospirosis								
V	Amebiasis	4	6	5	7	102	11	352
	Acute viral hepatitis(excluding Hepatitis A,Hepatitis E)		3			20	4	124
	Acute encephalitis					4	3	94
	Cryptosporidiosis					5		8
	Creutzfeldt-Jakob Disease			1		10	2	86
	Sever invasive streptococcal infections	1	2			10	1	73
	Acquired immunodeficiency syndrome	8	14	9	7	243	10	629
	Giardiasis	2				13		45
	Meningococcal meningitis					1		8
	Congenital rubella syndrome							
	Syphilis		2	3	4	57	7	312
	Tetanus				1	4		45
	Vancomycin-resistant <i>Staphylococcus aureus</i> infection							
	Vancomycin-resistant <i>enterococcus</i> infection			1	2	7	2	38

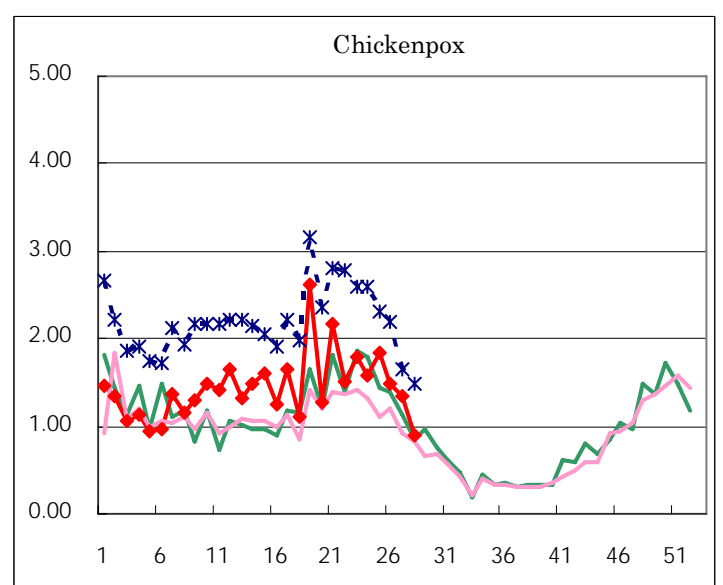
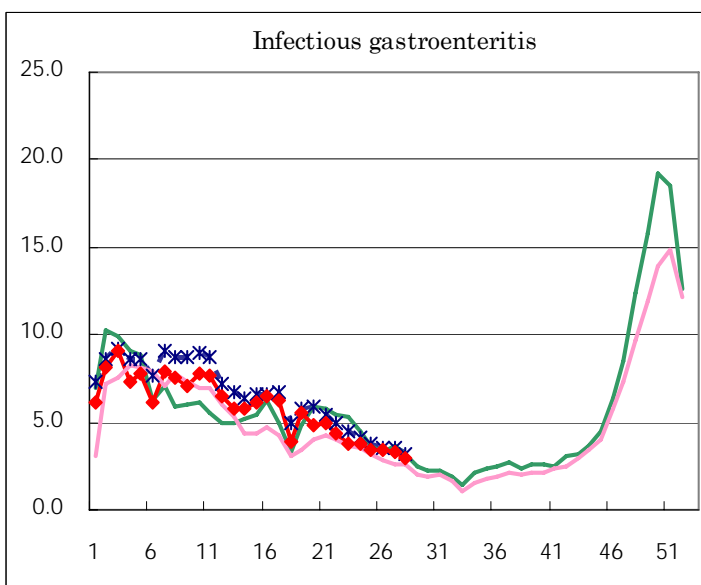
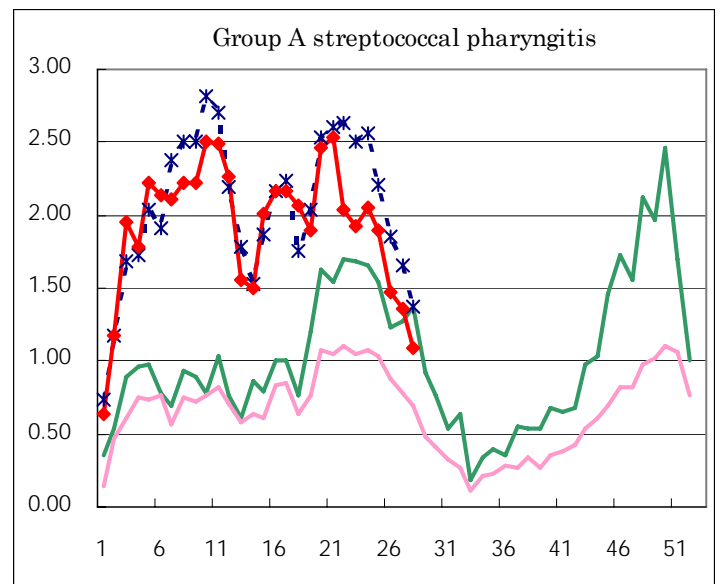
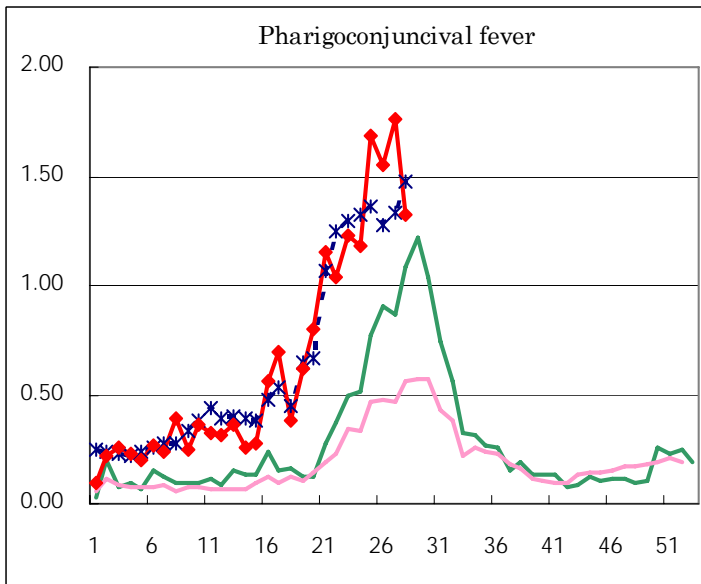
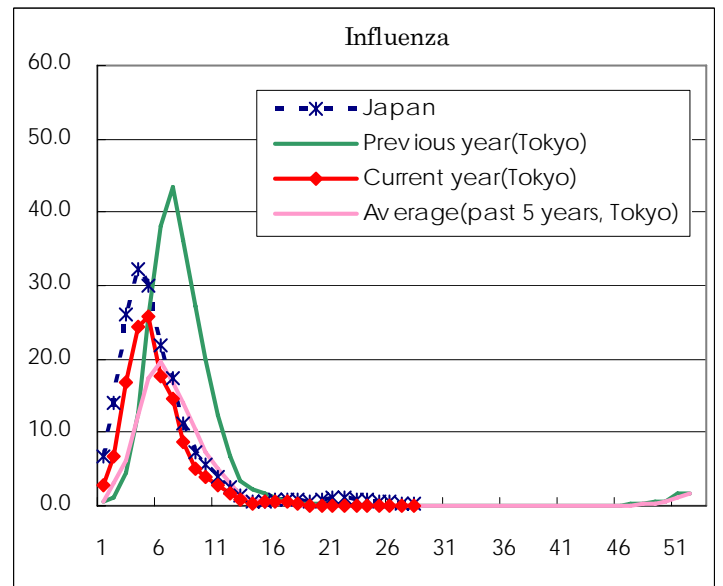
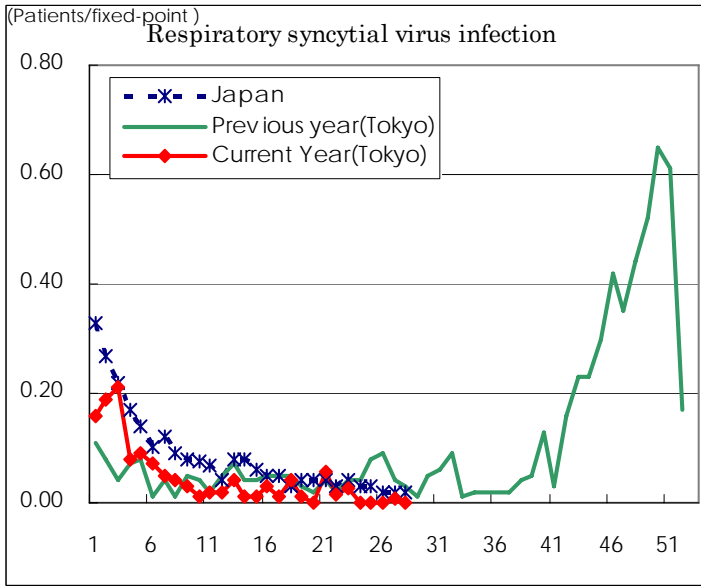
( Blank means 0. )

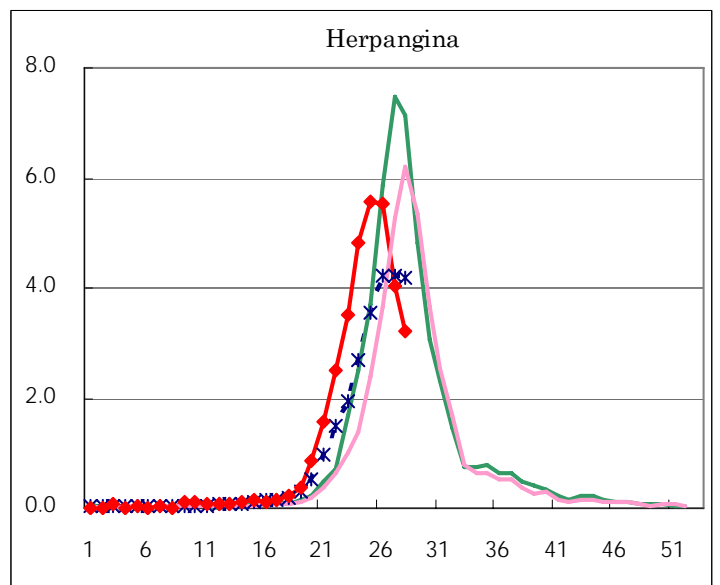
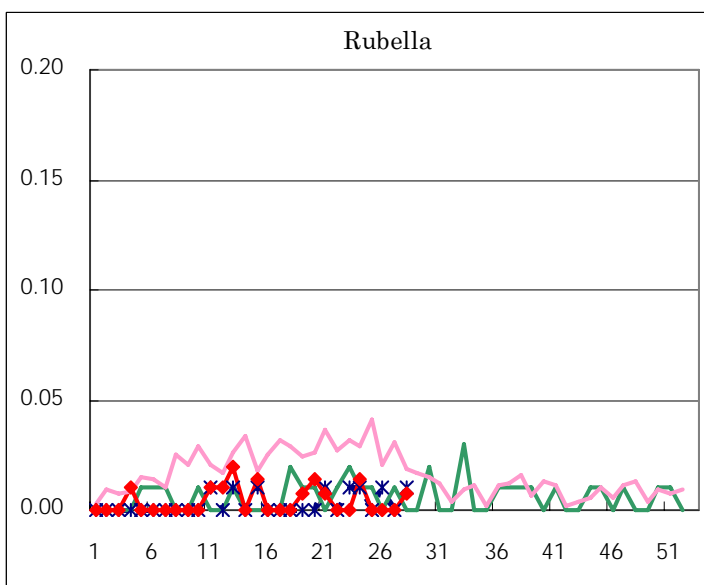
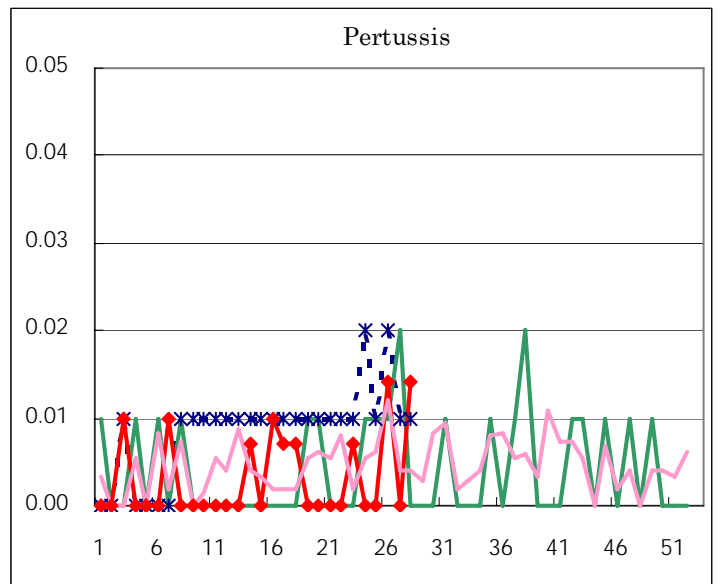
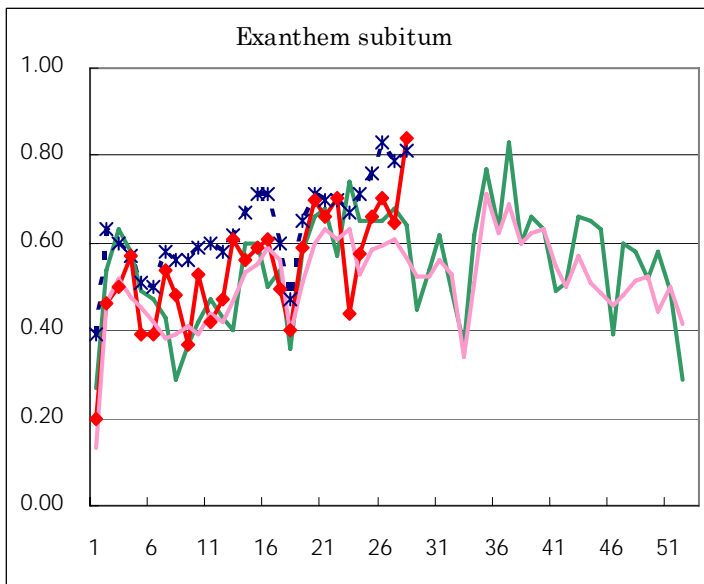
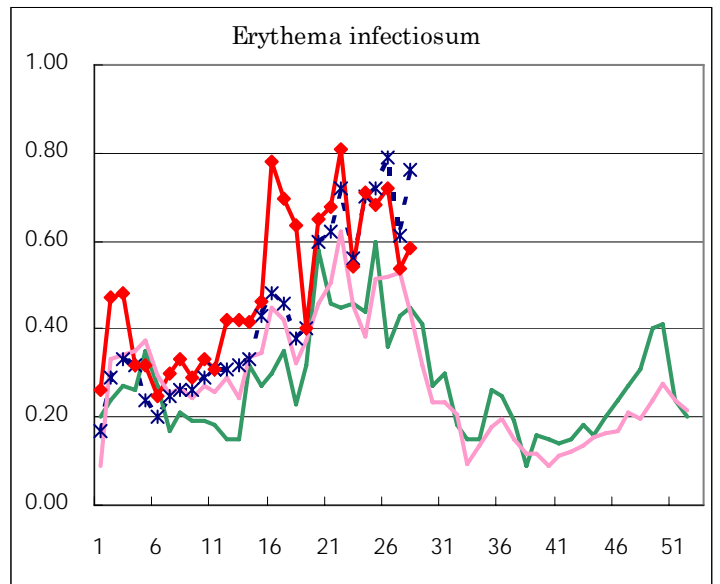
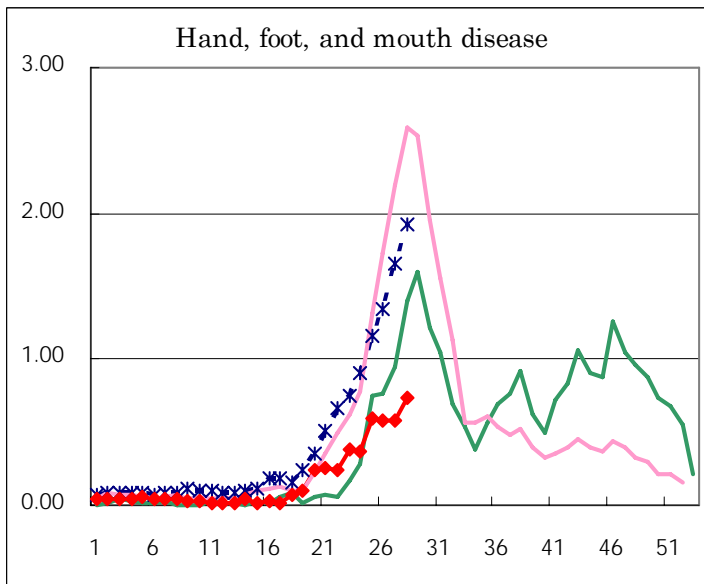
Number of patients with the diseases to be reported  
by the designated clinics and hospitals

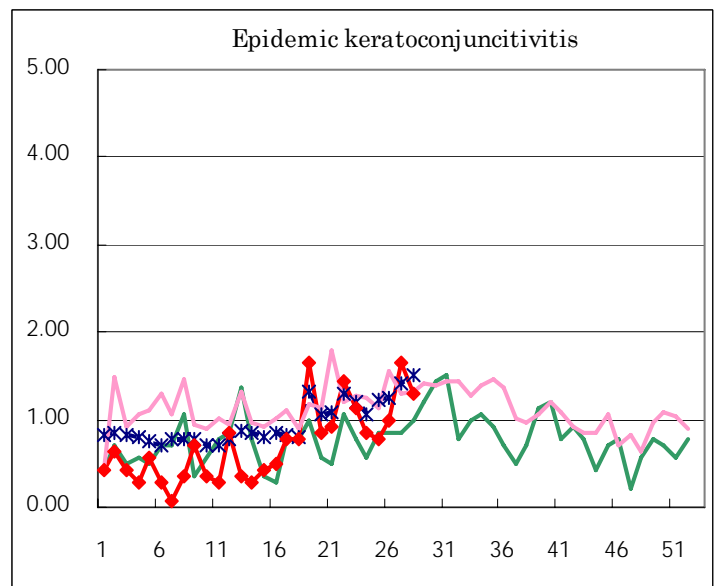
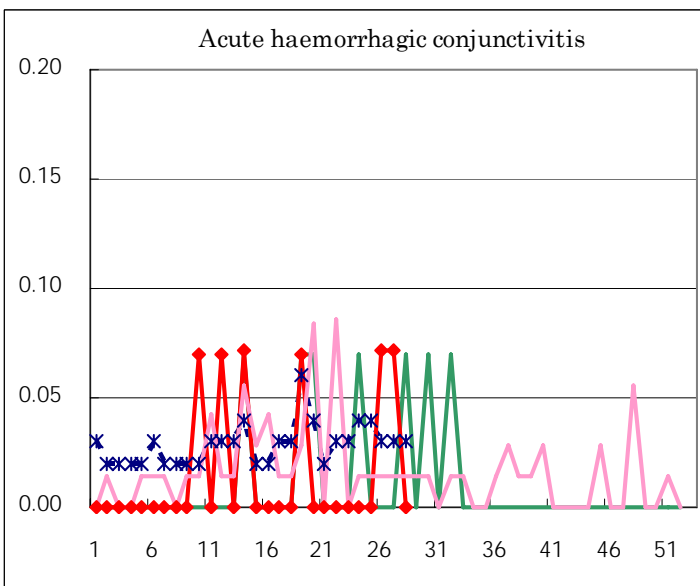
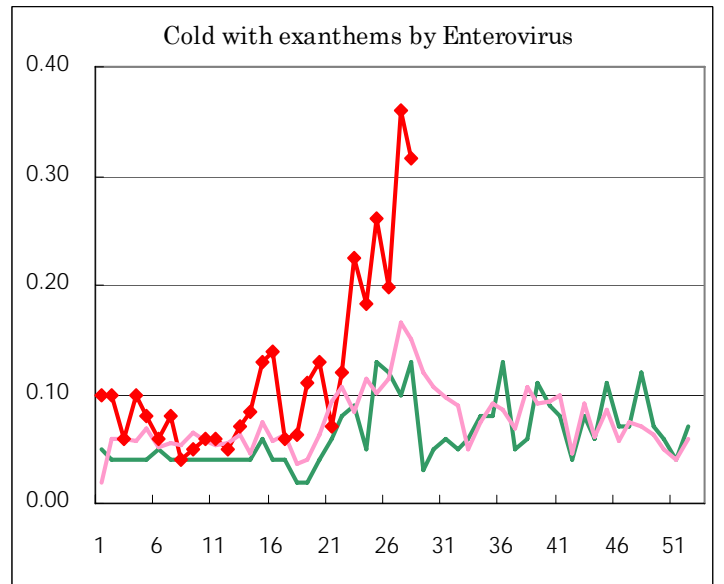
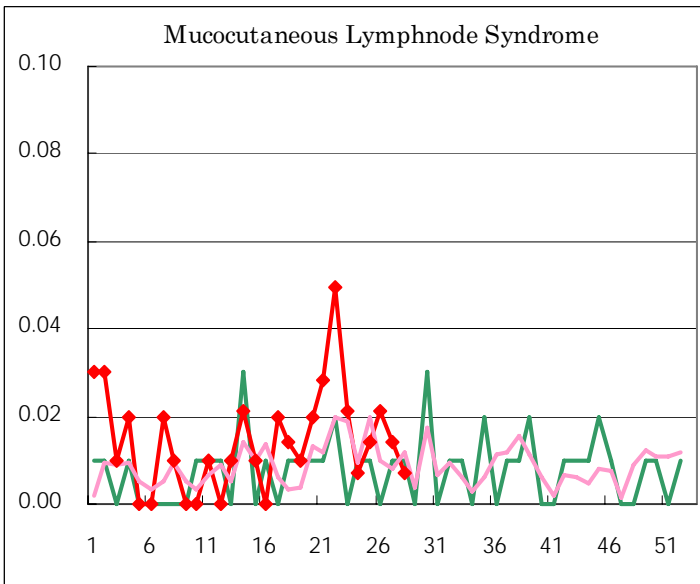
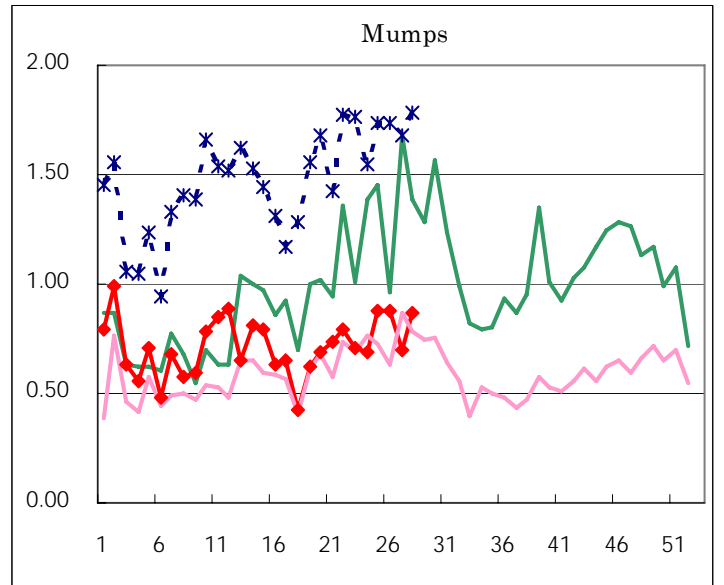
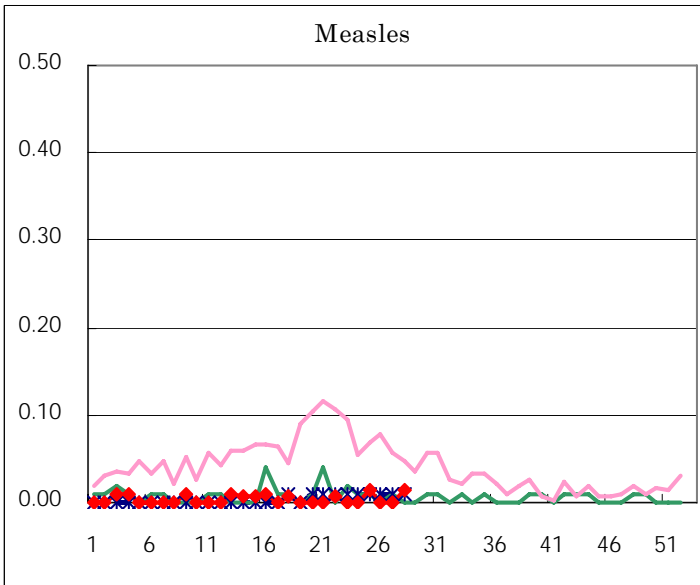
Diseases	Sex	2006				Total
		25th	26th	27th	28th	
Respiratory syncytial virus infection	M			1		1
	F					
Influenza	M	1	2			3
	F	2				2
Pharyngoconjunctival fever	M	127	120	125	101	473
	F	112	101	125	87	425
Group A streptococcal pharyngitis	M	150	107	112	81	450
	F	119	101	80	73	373
Infectious gastroenteritis	M	276	266	251	232	1,025
	F	214	219	214	182	829
Chickenpox	M	140	110	92	78	420
	F	122	100	98	50	370
Hand, foot, and mouth disease	M	50	53	48	58	209
	F	34	30	35	46	145
Erythema infectiosum	M	48	52	36	37	173
	F	49	50	40	46	185
Exanthem subitum	M	54	57	48	68	227
	F	40	43	44	51	178
Pertussis	M		1		1	2
	F		1		1	2
Rubella	M				1	1
	F					
Herpangina	M	435	417	271	228	1,351
	F	355	367	300	230	1,252
Measles	M	1			1	2
	F	1			1	2
Mumps	M	66	57	45	74	242
	F	59	68	54	49	230
Cold with exanthems by Enterovirus	M	23	14	29	23	89
	F	14	14	22	22	72
Mucocutaneous Lymphnode Syndrome	M	2	1	1		4
	F		2	1	1	4
Acute hemorrhagic conjunctivitis	M		1	1		2
	F					
Epidemic keratoconjunctivitis	M	7	9	10	10	36
	F	4	5	13	8	30
Bacterial meningitis	M					
	F					
Aseptic meningitis	M	1		1	3	5
	F			1		1
Mycoplasma pneumonia	M	2	1		3	6
	F			1	5	6
Chlamydial pneumonia (excluding psittacosis)	M					
	F					
Measles in adults	M					
	F					

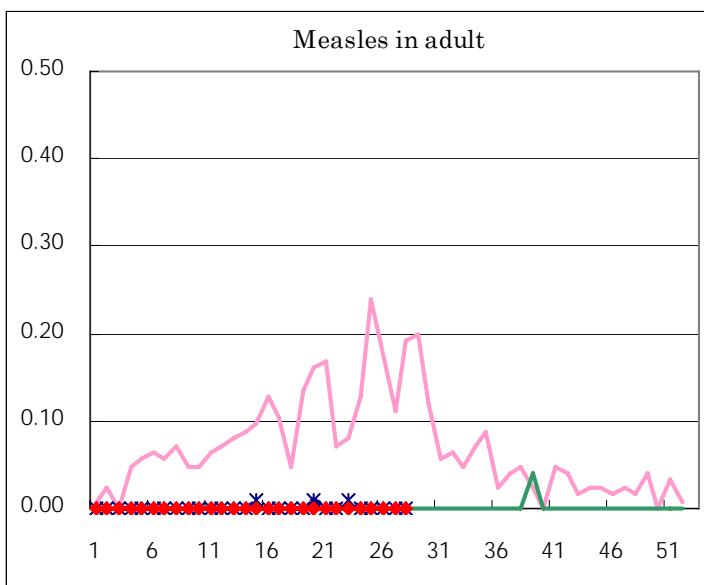
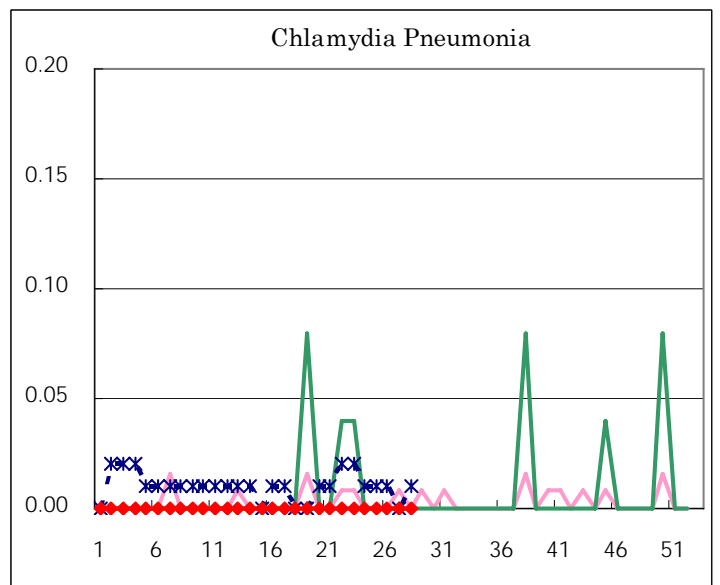
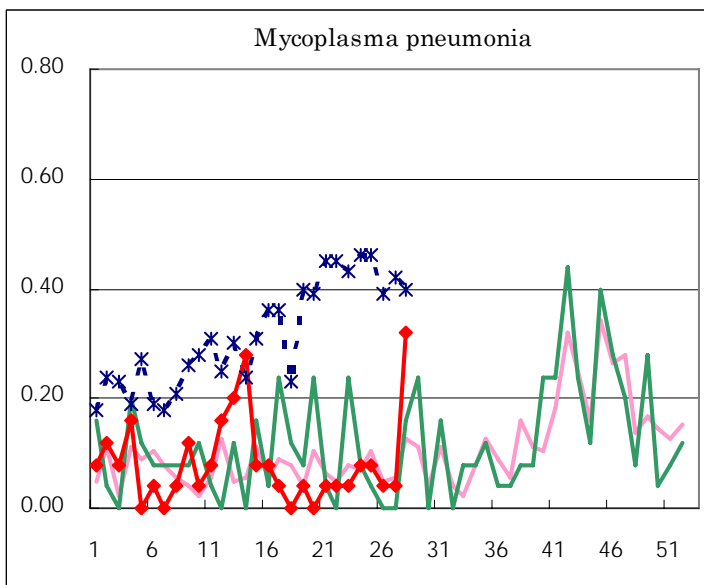
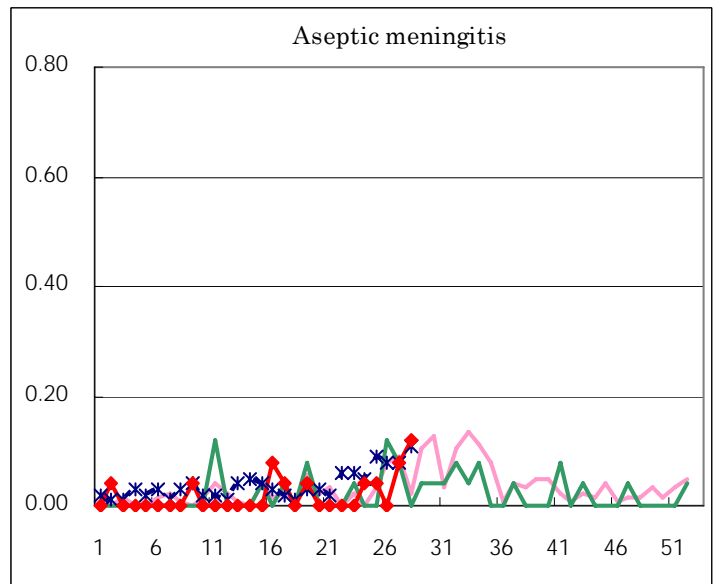
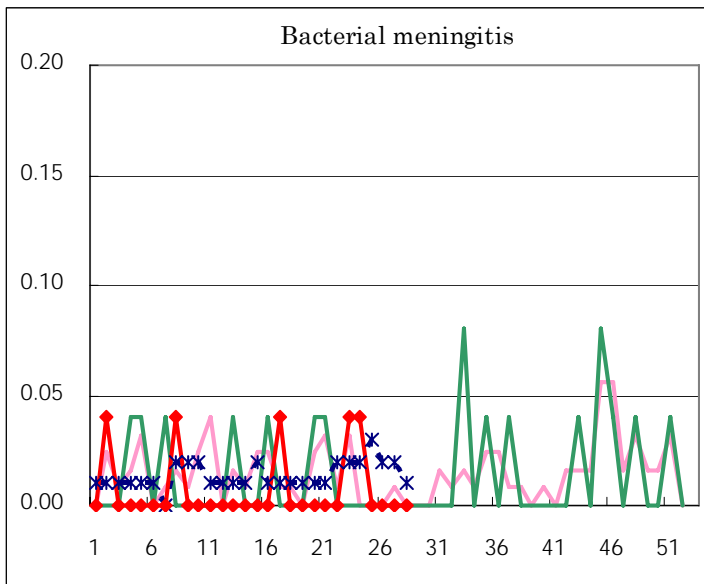
( Blank means 0. )

# Disease Trend Graph (weekly reported cases per fixed-point in comparison)









Tokyo Metropolitan Government  
**Infectious Disease Surveillance Center**