

INFECTIOUS DISEASES WEEKLY REPORT

TOKYO IDWR

Tokyo Metropolitan Institute of Public Health

1 August 2006 / Number 29

- Number of patients with the diseases required notifying all the cases
- Number of patients with the diseases to be reported by the sentinel clinics and hospitals
- Disease trend graph (weekly reported cases per sentinel in comparison)

Surveillance System in Tokyo, Japan

The infectious diseases which all physicians must report

All physicians must report to health centers the incidence of the diseases which are shown at page one. Health centers electronically report the individual cases to Tokyo Metropolitan Infectious Disease Surveillance Center.

The infectious diseases required to be reported by the sentinels

The numbers of patients who visit the sentinel clinics or hospitals during a week are reported to health centers in Tokyo. And they electronically report the numbers to Tokyo Metropolitan Infectious Disease Surveillance Center. We have about 260 sentinel clinics and hospitals in Tokyo.

1st Week is early January and 52nd Week is end of December.

Tokyo Metropolitan Infectious Disease Surveillance Center
Tokyo Metropolitan Institute of Public Health

TEL:81-3-3363-3213 FAX:81-3-5332-7365
e-mail:idsc@tokyo-eiken.go.jp
URL:idsc.tokyo-eiken.go.jp/

Number of patients with the diseases which all physicians must report

Category	Diseases	Tokyo				Japan		
		26th	27th	28th	29th	Total	29th	Total
I	Ebola hemorrhagic fever							
	Crimean-Congo hemorrhagic fever							
	Severe acute respiratory syndrome							
	Smallpox							
	Plague							
	Marburg disease							
	Lassa fever							
II	Acute poliomyelitis							
	Cholera					4		29
	Shigellosis	1				30	6	217
	Diphtheria							
	Typhoid fever			1		14	2	45
	Paratyphoid fever					9		15
III	Enterohemorrhagic <i>Escherichia coli</i> infection	16	11	8	14	97	125	1142
IV	Hepatitis E	1			1	3		42
	West Nile fever							
	Hepatitis A		1			23	3	225
	Echinococcosis							13
	Yellow fever							
	Psittacosis					3		15
	Relapsing fever							
	Q fever							1
	Rabies							
	High pathogenic avian influenza							
	Coccidioidomycosis							1
	Monkeypox							
	Hemorrhagic fever with renal syndrome							
	Anthrax							
	Scrub typhus (Tsutsugamushi disease)						2	167
	Dengue fever		1		2	7		22
	Nipah virus infection							
	Japanese spotted fever							13
	Japanese encephalitis							
	Hantavirus pulmonary syndrome							
	B virus disease							
	Brucellosis					1		2
	Epidemic typhus							
Botulism							1	
Malaria	1		1	1	10		31	
Tularemia								
Lyme disease						1	2	
Lyssavirus infection								
Legionellosis	3	1		1	33	7	219	
Leptospirosis								
V	Amebiasis	6	5	7	2	104	12	369
	Acute viral hepatitis(excluding Hepatitis A,Hepatitis E)	3				20	4	130
	Acute encephalitis					4		99
	Cryptosporidiosis					5		8
	Creutzfeldt-Jakob Disease		1			10		89
	Sever invasive streptococcal infections	2				10	1	74
	Acquired immunodeficiency syndrome	14	9	7	9	252	11	650
	Giardiasis					13	1	47
	Meningococcal meningitis					1		8
	Congenital rubella syndrome							
	Syphilis	2	3	4	7	64	5	324
	Tetanus			1		4	1	46
	Vancomycin-resistant <i>Staphylococcus aureus</i> infection							
	Vancomycin-resistant <i>enterococcus</i> infection		1	2		7		41

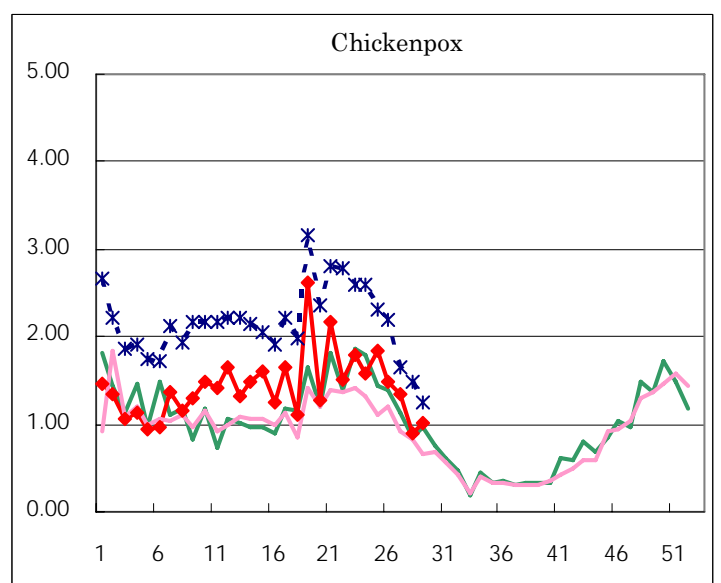
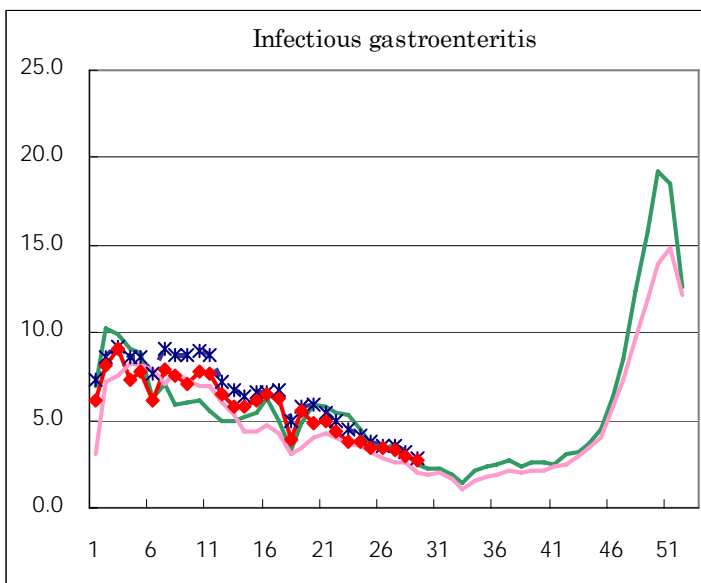
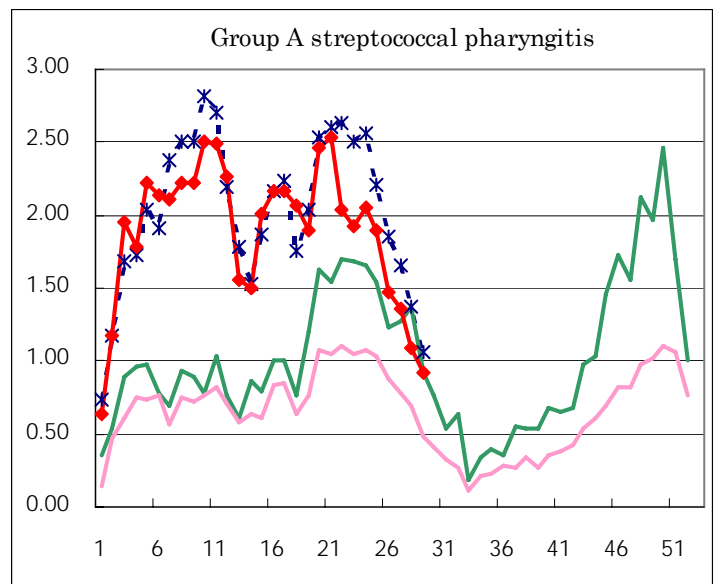
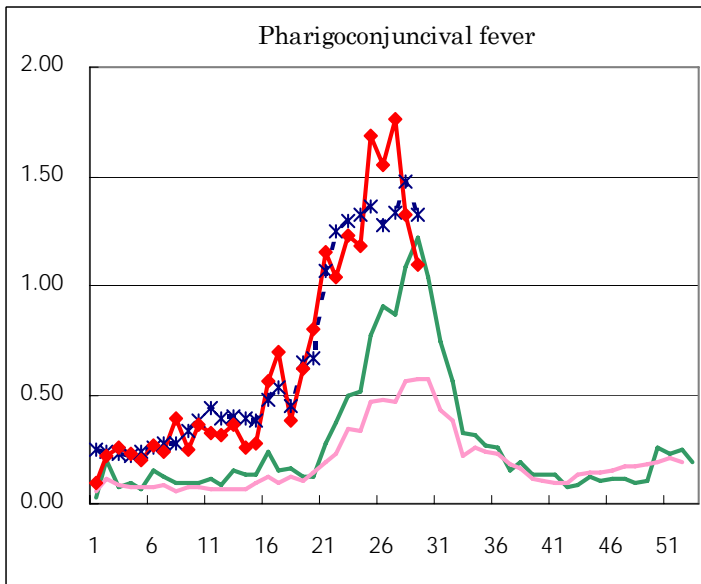
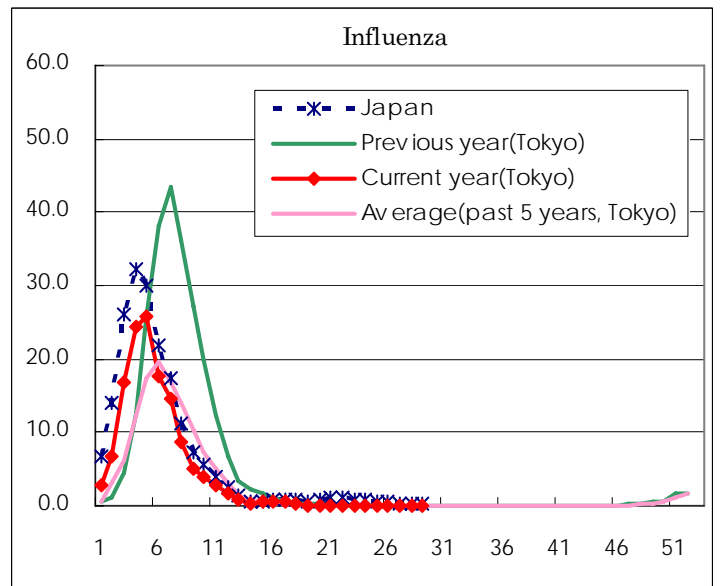
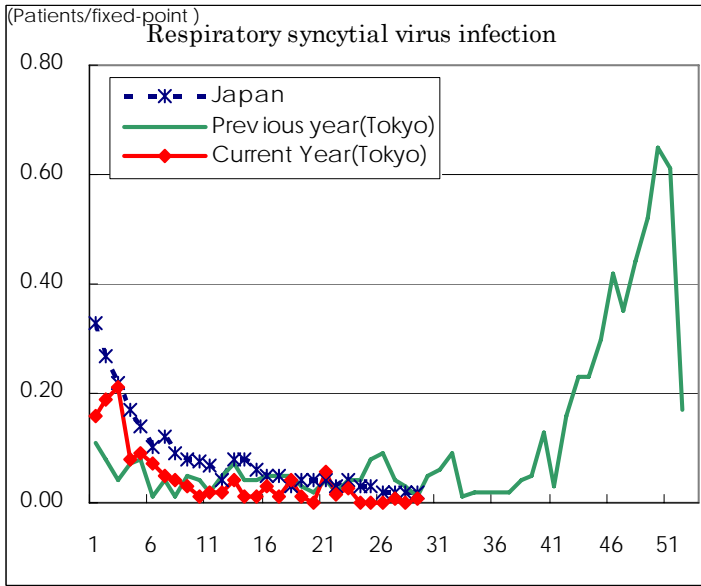
(Blank means 0.)

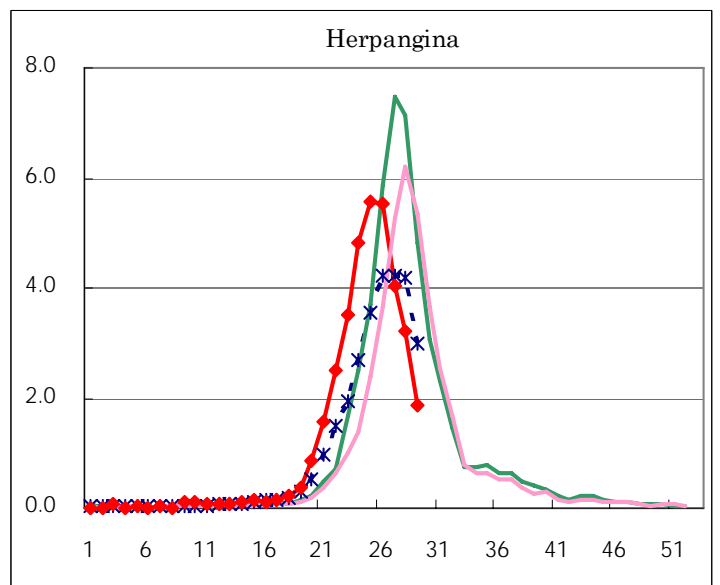
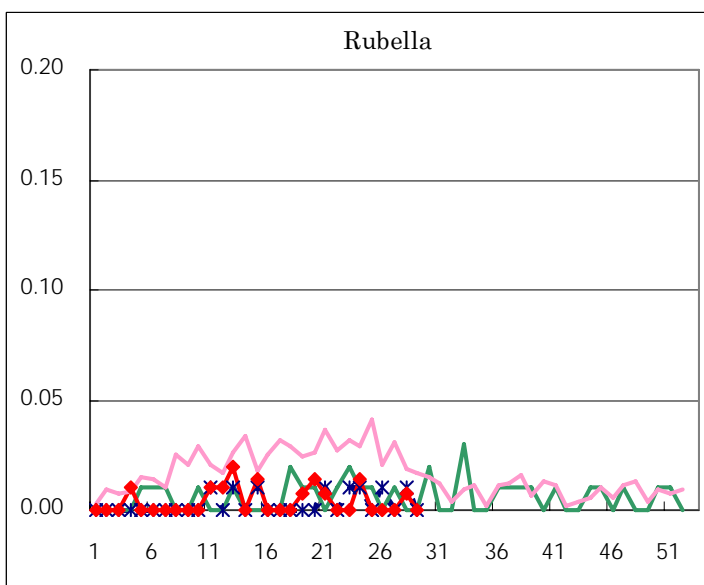
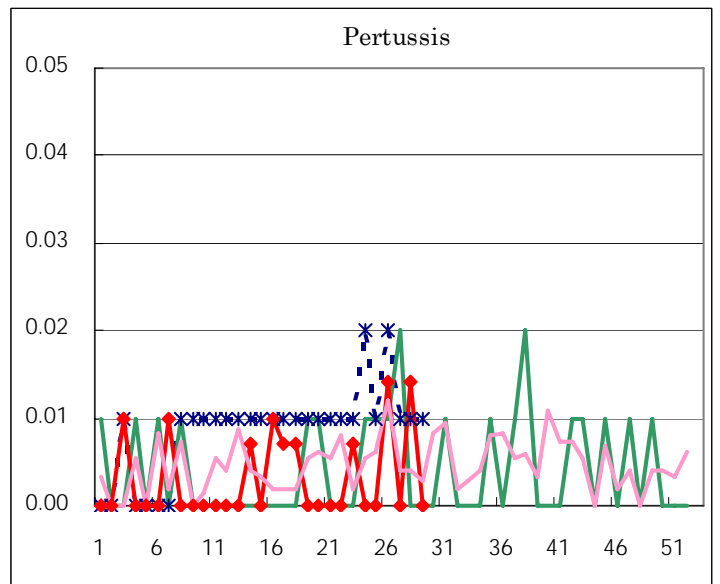
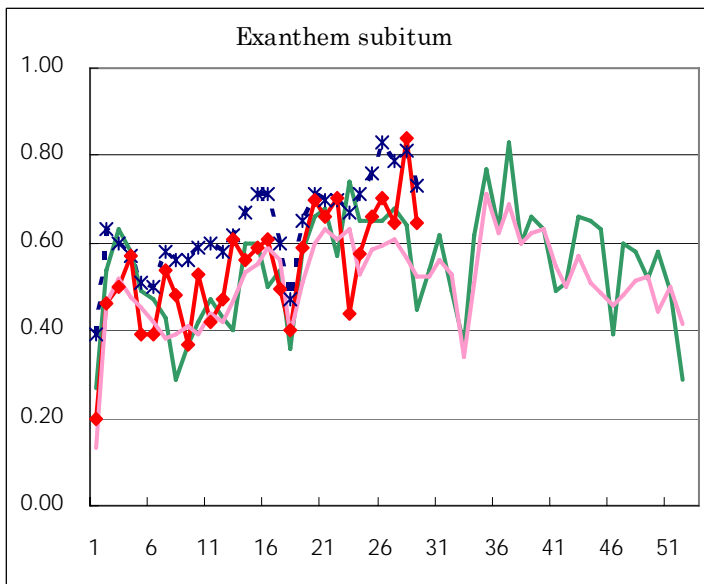
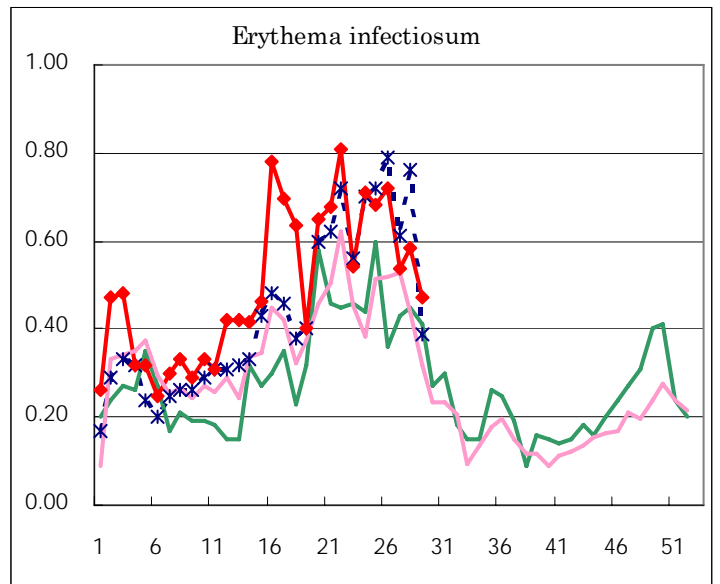
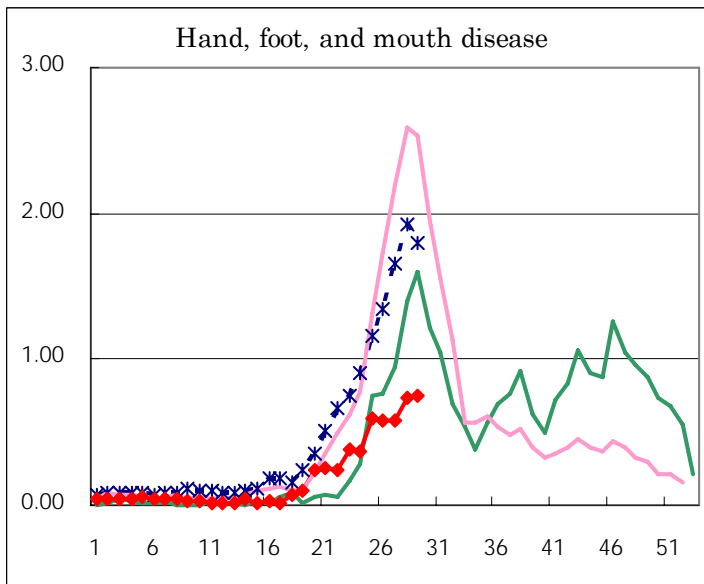
Number of patients with the diseases to be reported
by the designated clinics and hospitals

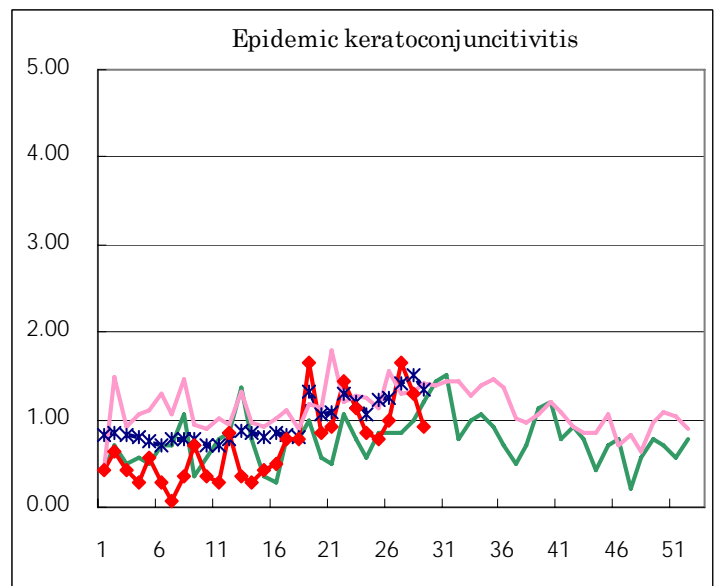
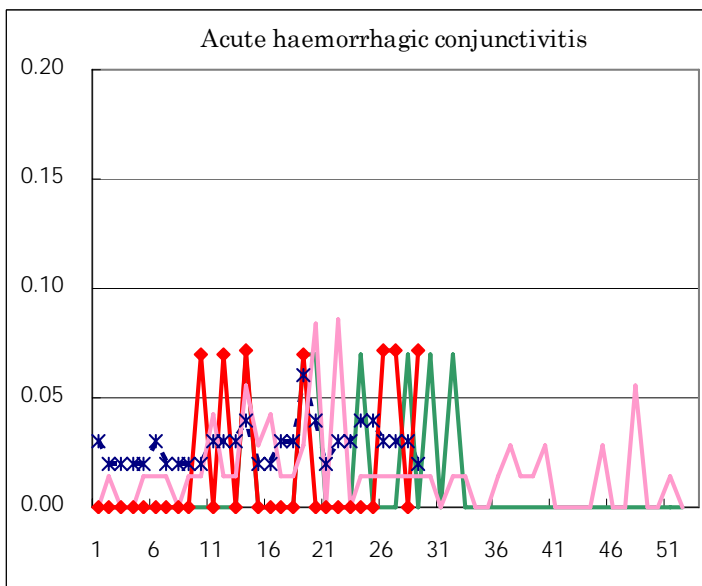
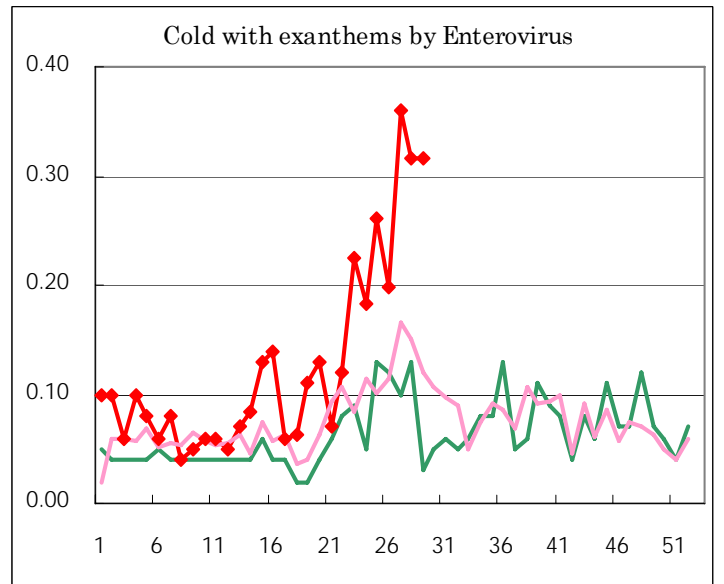
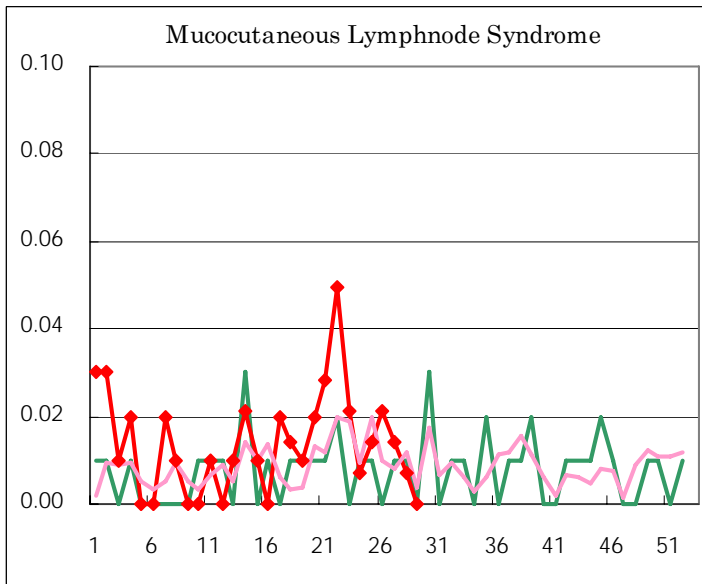
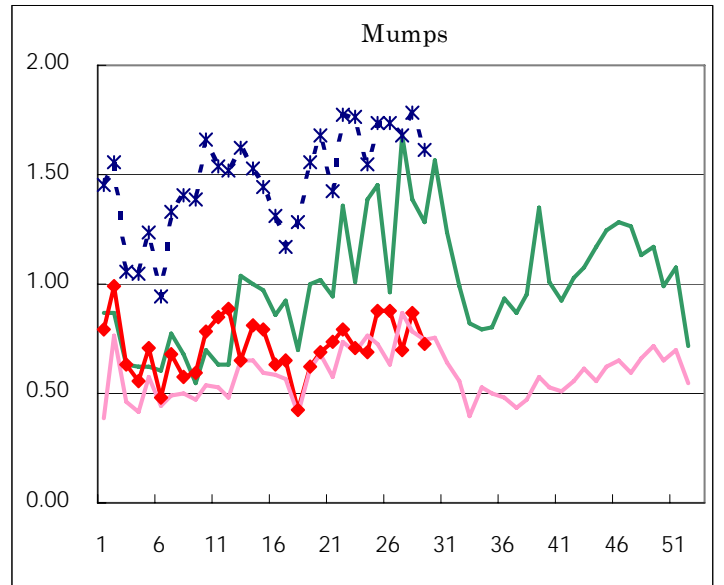
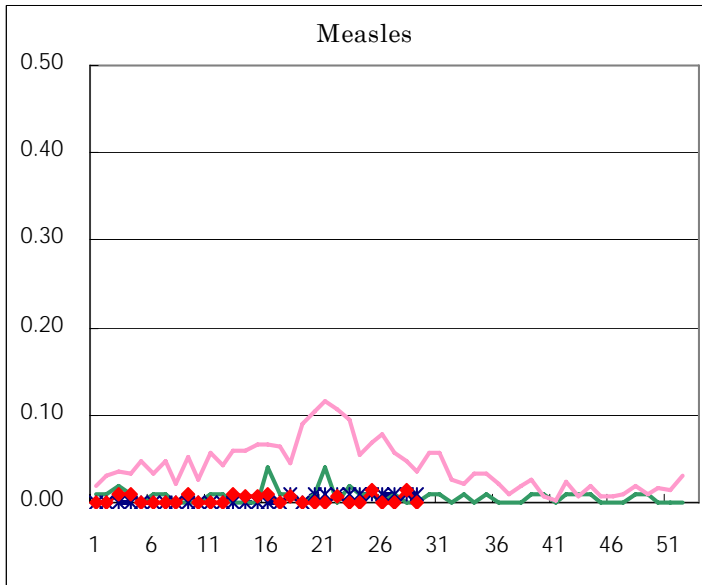
Diseases	Sex	2006				Total
		26th	27th	28th	29th	
Respiratory syncytial virus infection	M		1		1	2
	F					
Influenza	M	2				2
	F				2	2
Pharyngoconjunctival fever	M	120	125	101	84	430
	F	101	125	87	72	385
Group A streptococcal pharyngitis	M	107	112	81	68	368
	F	101	80	73	63	317
Infectious gastroenteritis	M	266	251	232	213	962
	F	219	214	182	173	788
Chickenpox	M	110	92	78	78	358
	F	100	98	50	66	314
Hand, foot, and mouth disease	M	53	48	58	61	220
	F	30	35	46	45	156
Erythema infectiosum	M	52	36	37	34	159
	F	50	40	46	33	169
Exanthem subitum	M	57	48	68	50	223
	F	43	44	51	42	180
Pertussis	M	1		1		2
	F	1		1		2
Rubella	M			1		1
	F					
Herpangina	M	417	271	228	142	1,058
	F	367	300	230	123	1,020
Measles	M			1		1
	F			1		1
Mumps	M	57	45	74	55	231
	F	68	54	49	48	219
Cold with exanthems by Enterovirus	M	14	29	23	34	100
	F	14	22	22	11	69
Mucocutaneous Lymphnode Syndrome	M	1	1			2
	F	2	1	1		4
Acute hemorrhagic conjunctivitis	M	1	1			2
	F				1	1
Epidemic keratoconjunctivitis	M	9	10	10	8	37
	F	5	13	8	5	31
Bacterial meningitis	M					
	F					
Aseptic meningitis	M		1	3		4
	F		1			1
Mycoplasma pneumonia	M	1		3	3	7
	F		1	5	2	8
Chlamydial pneumonia (excluding psittacosis)	M					
	F					
Measles in adults	M					
	F					

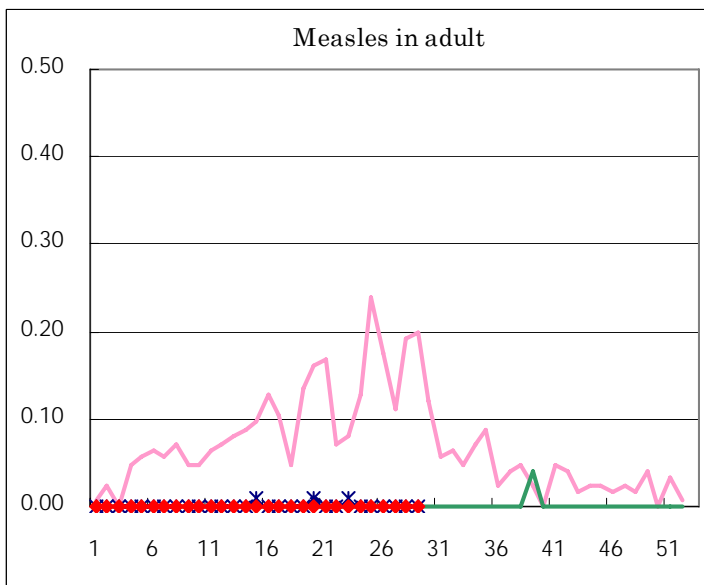
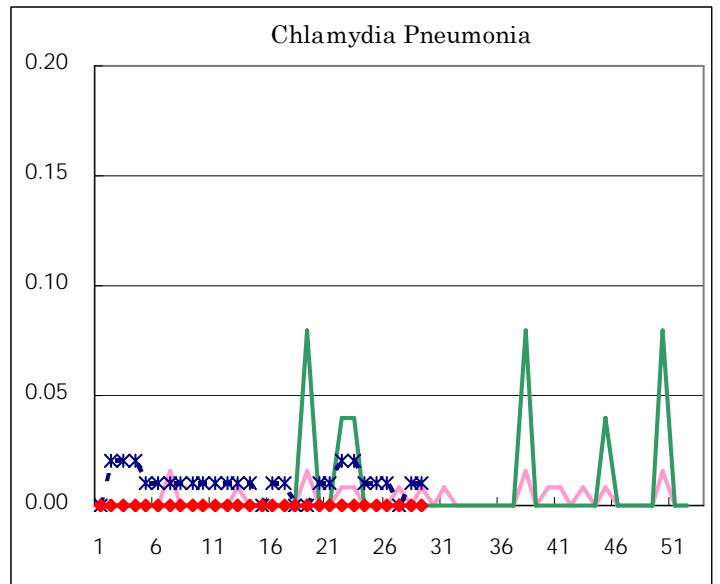
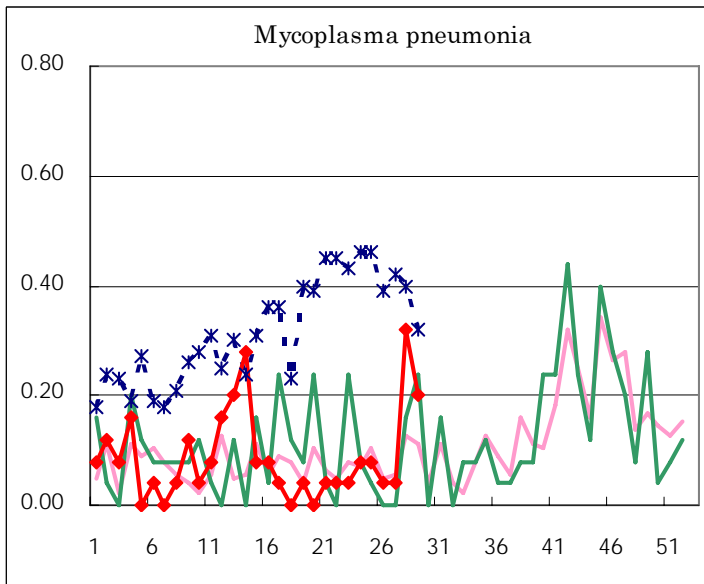
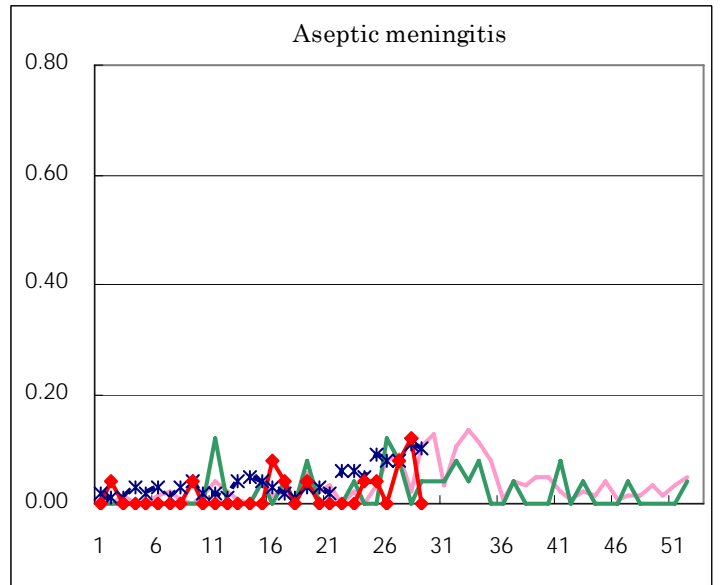
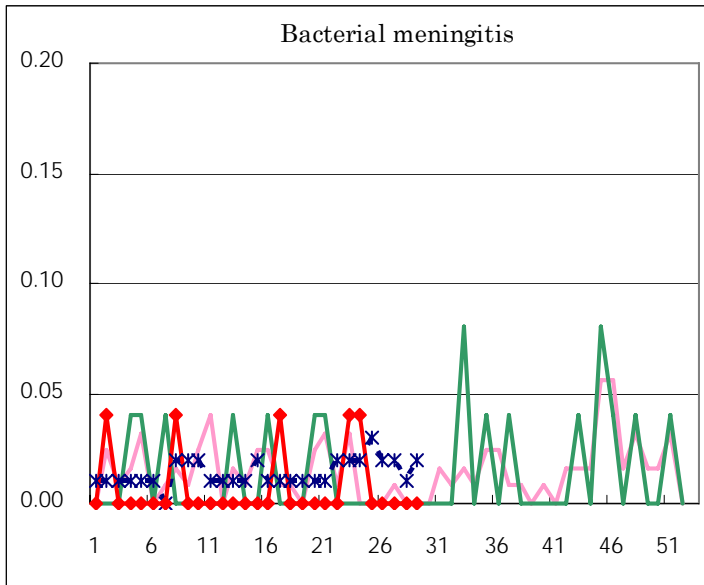
(Blank means 0.)

Disease Trend Graph (weekly reported cases per fixed-point in comparison)









Tokyo Metropolitan Government
Infectious Disease Surveillance Center