

INFECTIOUS DISEASES WEEKLY REPORT

TOKYO IDWR

Tokyo Metropolitan Institute of Public Health

8 August 2006 / Number 30

- Number of patients with the diseases required notifying all the cases
- Number of patients with the diseases to be reported by the sentinel clinics and hospitals
- Disease trend graph (weekly reported cases per sentinel in comparison)

Surveillance System in Tokyo, Japan

The infectious diseases which all physicians must report

All physicians must report to health centers the incidence of the diseases which are shown at page one. Health centers electronically report the individual cases to Tokyo Metropolitan Infectious Disease Surveillance Center.

The infectious diseases required to be reported by the sentinels

The numbers of patients who visit the sentinel clinics or hospitals during a week are reported to health centers in Tokyo. And they electronically report the numbers to Tokyo Metropolitan Infectious Disease Surveillance Center. We have about 260 sentinel clinics and hospitals in Tokyo.

1st Week is early January and 52nd Week is end of December.

Tokyo Metropolitan Infectious Disease Surveillance Center
Tokyo Metropolitan Institute of Public Health

TEL:81-3-3363-3213 FAX:81-3-5332-7365
e-mail:idsc@tokyo-eiken.go.jp
URL:idsc.tokyo-eiken.go.jp/

Number of patients with the diseases which all physicians must report

Category	Diseases	Tokyo				Japan		
		27th	28th	29th	30th	Total	30th	Total
I	Ebola hemorrhagic fever							
	Crimean-Congo hemorrhagic fever							
	Severe acute respiratory syndrome							
	Smallpox							
	Plague							
	Marburg disease							
	Lassa fever							
II	Acute poliomyelitis							
	Cholera					4	1	30
	Shigellosis					30	6	223
	Diphtheria							
	Typhoid fever		1			14	2	47
	Paratyphoid fever					9		15
III	Enterohemorrhagic <i>Escherichia coli</i> infection	11	8	14	23	120	191	1289
IV	Hepatitis E			1		3		42
	West Nile fever							
	Hepatitis A	1				23	3	230
	Echinococcosis						1	14
	Yellow fever							
	Psittacosis					3		15
	Relapsing fever							
	Q fever							1
	Rabies							
	High pathogenic avian influenza							
	Coccidioidomycosis							1
	Monkeypox							
	Hemorrhagic fever with renal syndrome							
	Anthrax							
	Scrub typhus (Tsumugamushi disease)							170
	Dengue fever	1		2		7		23
	Nipah virus infection							
	Japanese spotted fever							14
	Japanese encephalitis							
	Hantavirus pulmonary syndrome							
	B virus disease							
	Brucellosis					1		2
	Epidemic typhus							
Botulism							1	
Malaria		1	1		10		33	
Tularemia								
Lyme disease							3	
Lyssavirus infection								
Legionellosis	1		1	2	35	15	230	
Leptospirosis								
V	Amebiasis	5	7	2	7	111	14	393
	Acute viral hepatitis(excluding Hepatitis A,Hepatitis E)					20	1	136
	Acute encephalitis					4	1	99
	Cryptosporidiosis					5		8
	Creutzfeldt-Jakob Disease	1				10		90
	Sever invasive streptococcal infections					10		75
	Acquired immunodeficiency syndrome	9	7	9	8	260	11	676
	Giardiasis				2	15	2	49
	Meningococcal meningitis					1		9
	Congenital rubella syndrome							
	Syphilis	3	4	7	5	69	13	334
	Tetanus		1			4	4	51
	Vancomycin-resistant <i>Staphylococcus aureus</i> infection							
	Vancomycin-resistant <i>enterococcus</i> infection	1	2			7	2	42

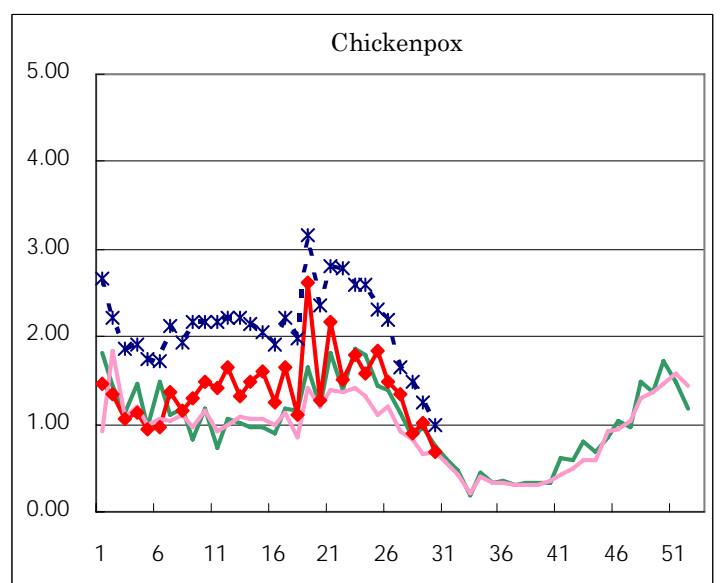
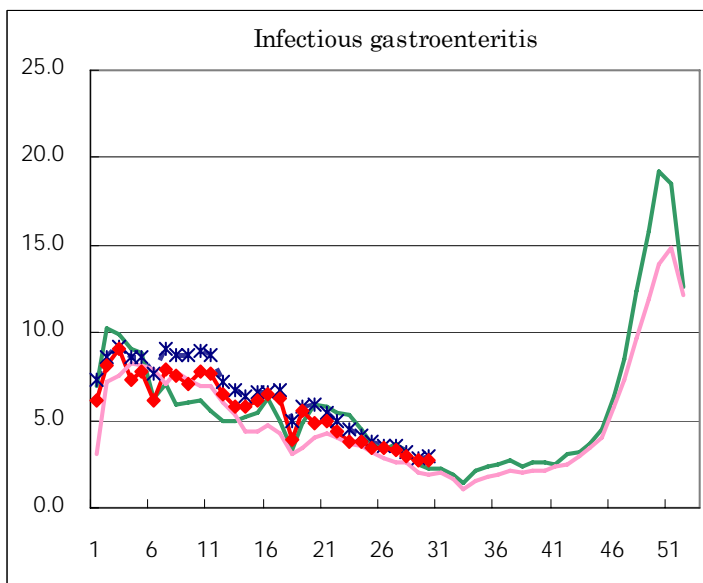
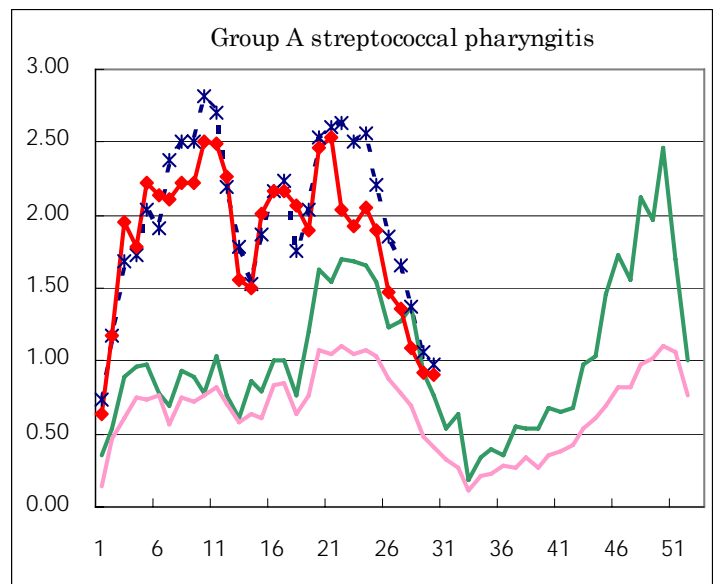
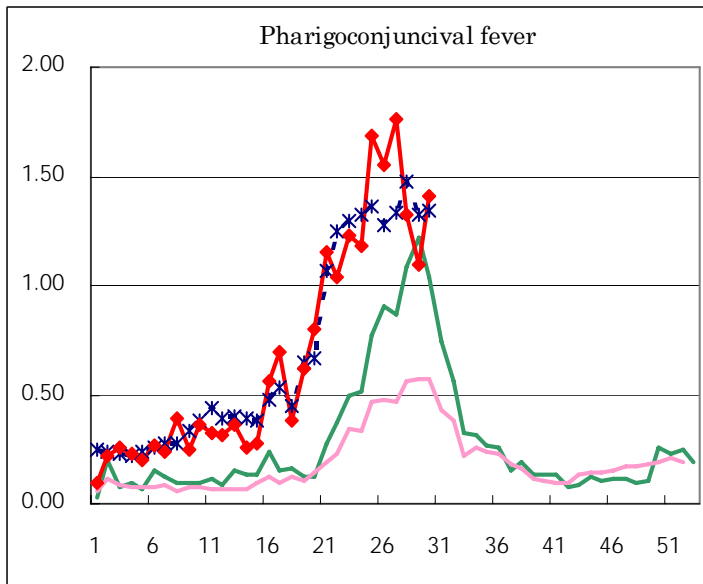
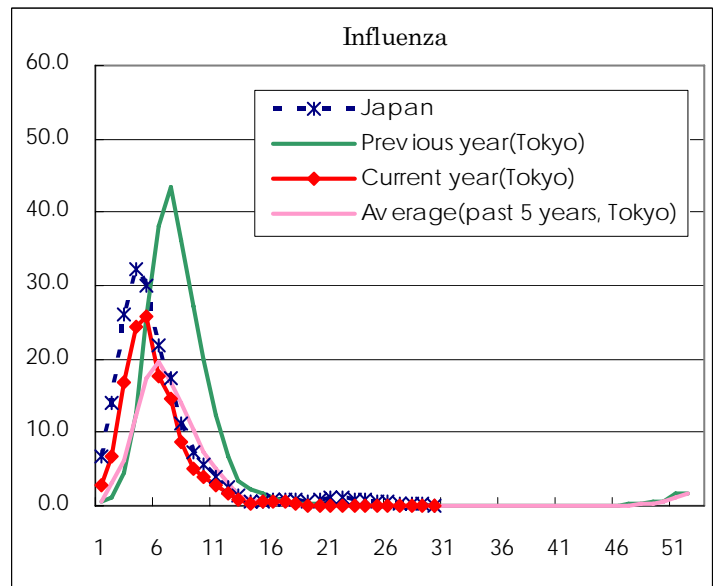
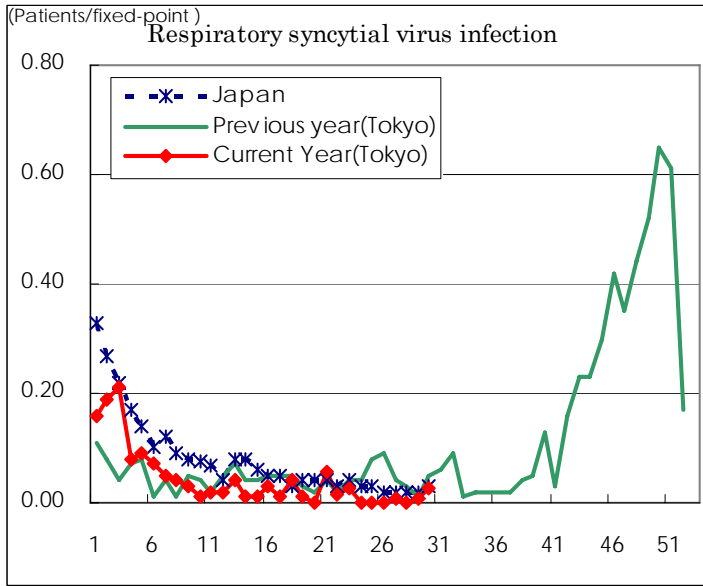
(Blank means 0.)

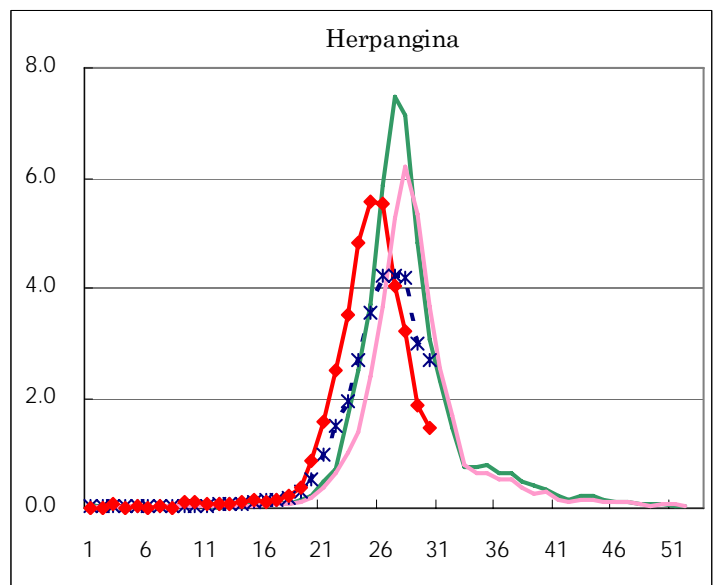
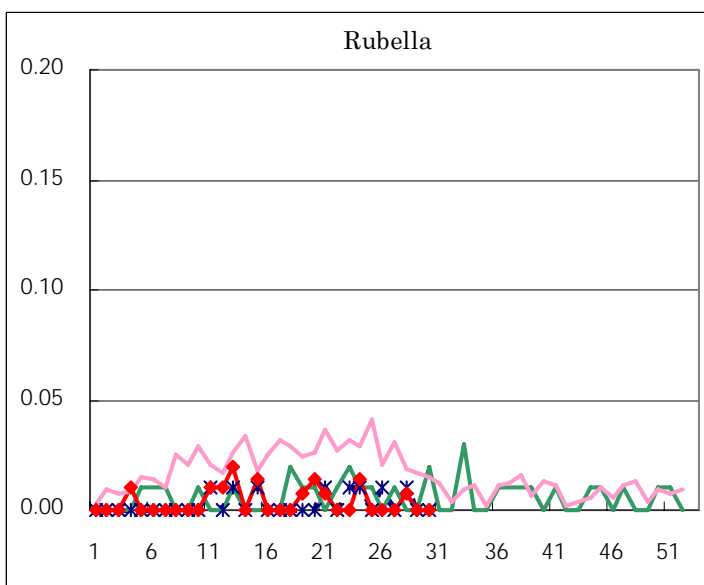
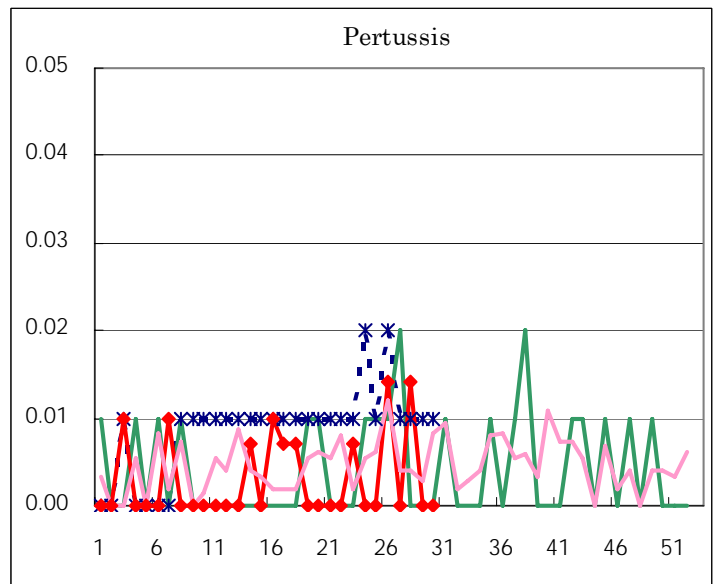
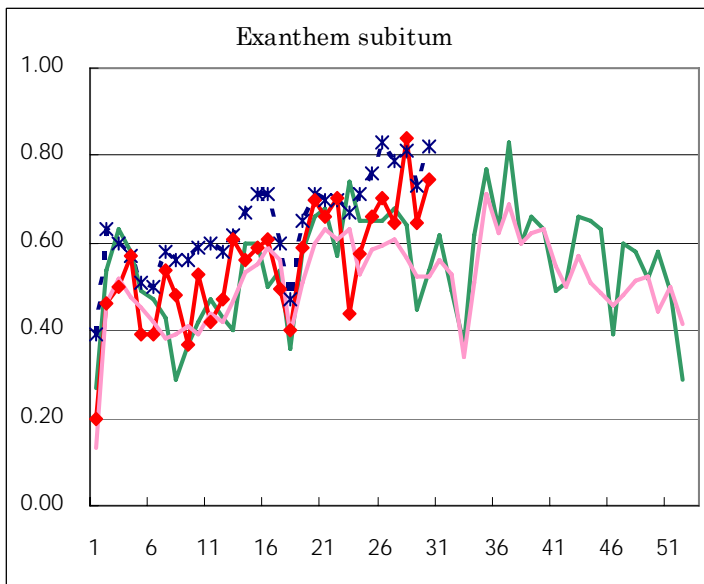
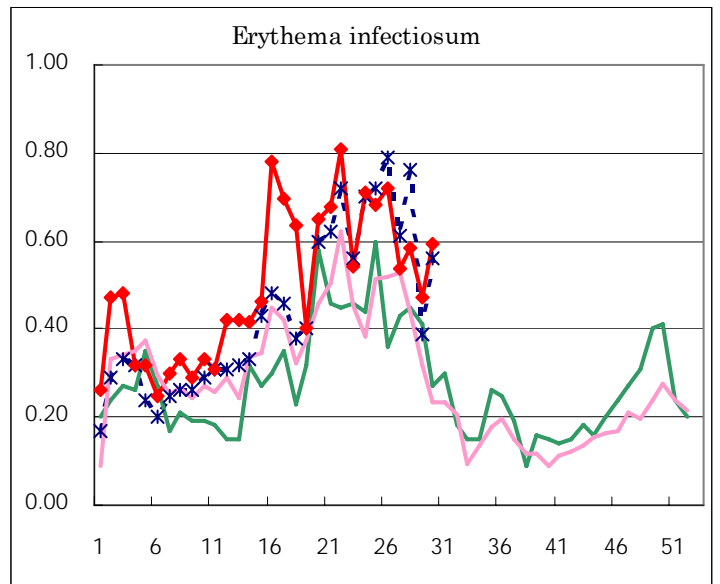
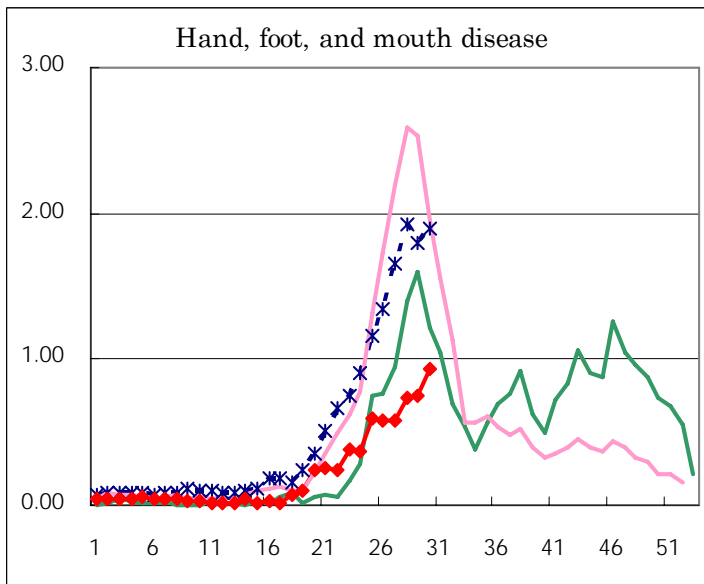
Number of patients with the diseases to be reported
by the designated clinics and hospitals

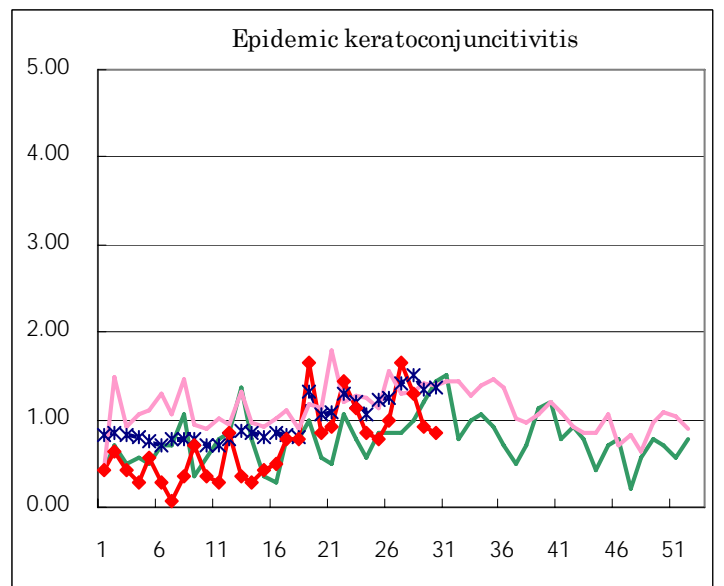
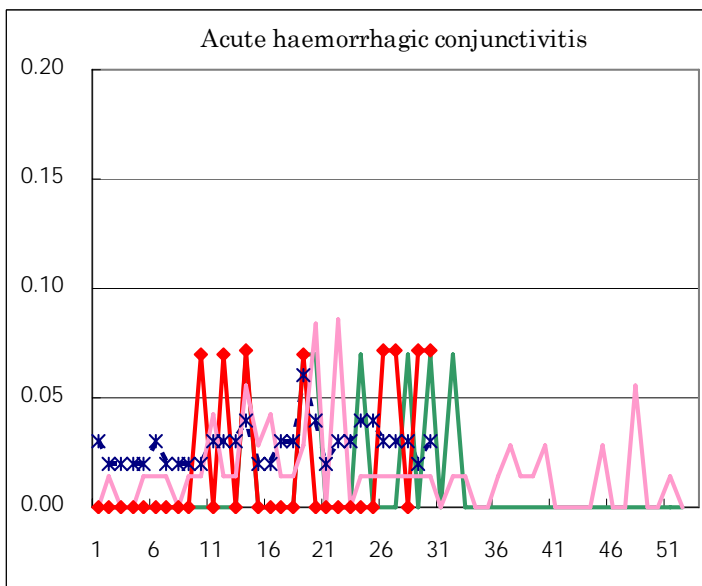
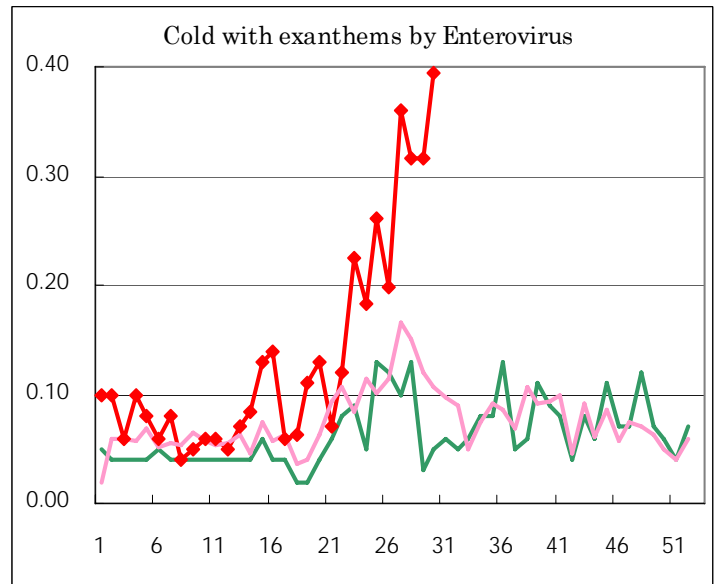
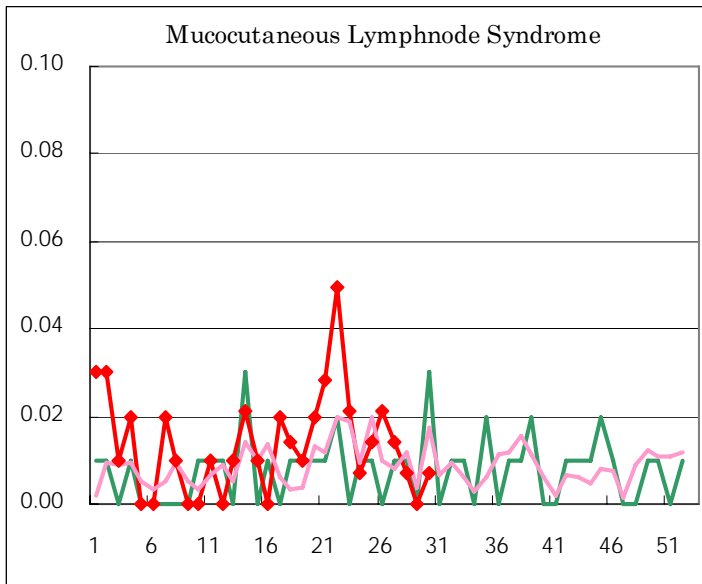
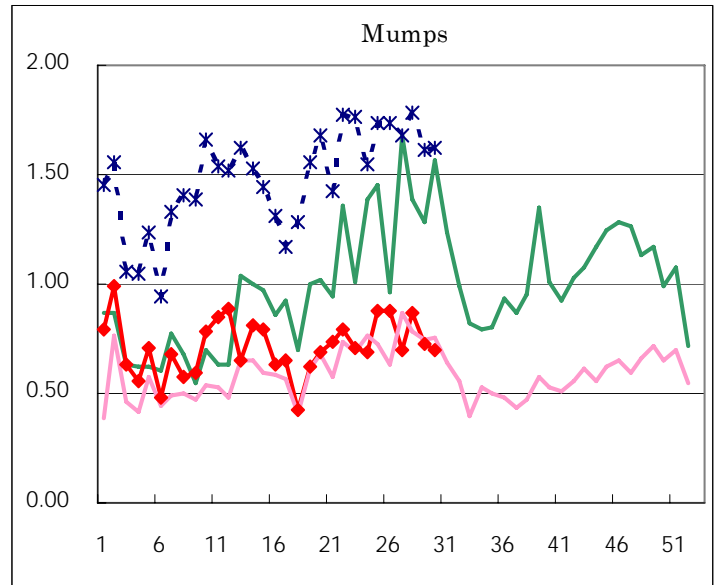
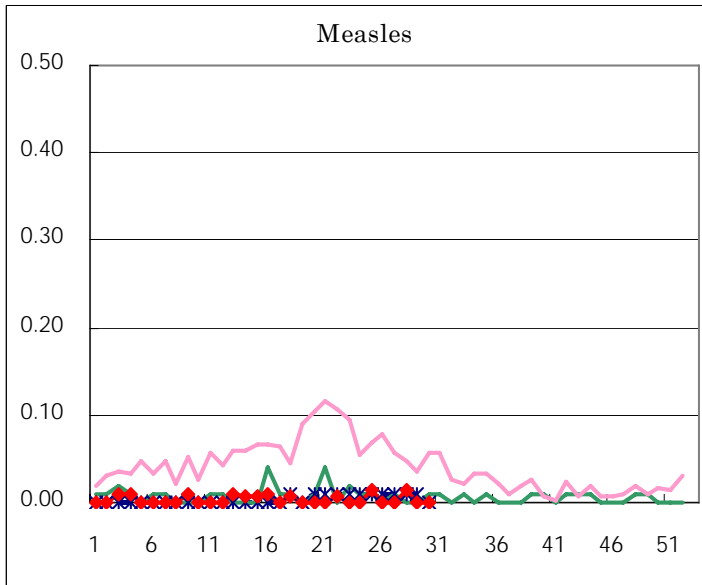
Diseases	Sex	2006				Total
		27th	28th	29th	30th	
Respiratory syncytial virus infection	M	1		1	1	3
	F				3	3
Influenza	M					
	F			2	1	3
Pharyngoconjunctival fever	M	125	101	84	112	422
	F	125	87	72	88	372
Group A streptococcal pharyngitis	M	112	81	68	61	322
	F	80	73	63	67	283
Infectious gastroenteritis	M	251	232	213	223	919
	F	214	182	173	165	734
Chickenpox	M	92	78	78	48	296
	F	98	50	66	50	264
Hand, foot, and mouth disease	M	48	58	61	74	241
	F	35	46	45	59	185
Erythema infectiosum	M	36	37	34	48	155
	F	40	46	33	36	155
Exanthem subitum	M	48	68	50	49	215
	F	44	51	42	57	194
Pertussis	M		1			1
	F		1			1
Rubella	M		1			1
	F					
Herpangina	M	271	228	142	110	751
	F	300	230	123	96	749
Measles	M		1			1
	F		1			1
Mumps	M	45	74	55	56	230
	F	54	49	48	43	194
Cold with exanthems by Enterovirus	M	29	23	34	23	109
	F	22	22	11	33	88
Mucocutaneous Lymphnode Syndrome	M	1			1	2
	F	1	1			2
Acute hemorrhagic conjunctivitis	M	1			1	2
	F			1		1
Epidemic keratoconjunctivitis	M	10	10	8	8	36
	F	13	8	5	4	30
Bacterial meningitis	M					
	F					
Aseptic meningitis	M	1	3		3	7
	F	1				1
Mycoplasma pneumonia	M		3	3		6
	F	1	5	2		8
Chlamydial pneumonia (excluding psittacosis)	M					
	F					
Measles in adults	M					
	F					

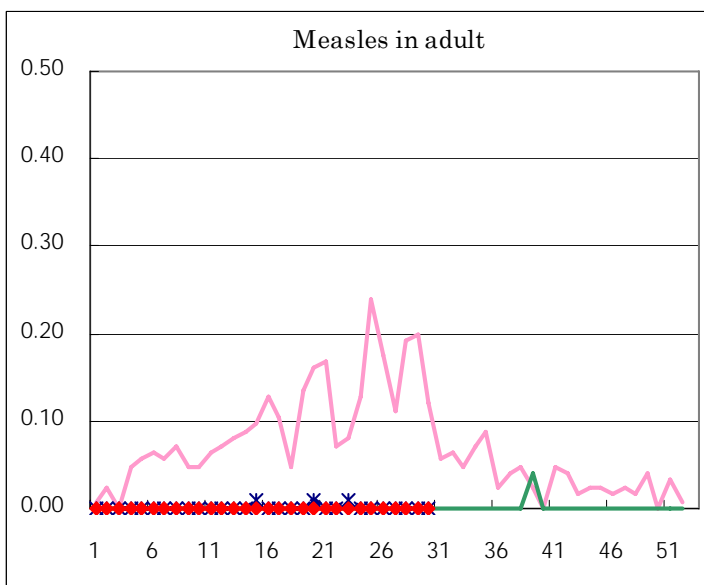
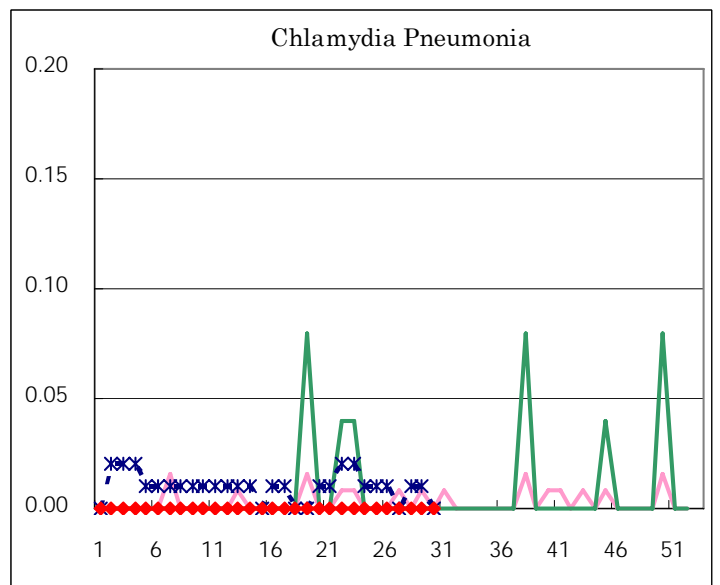
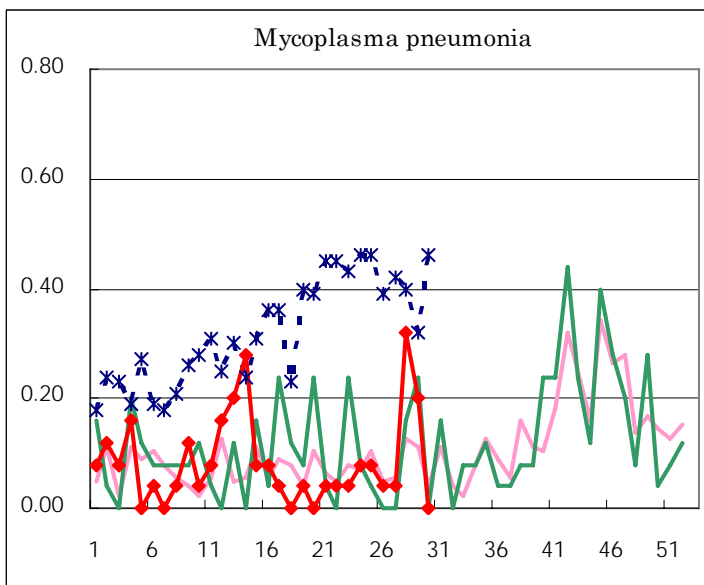
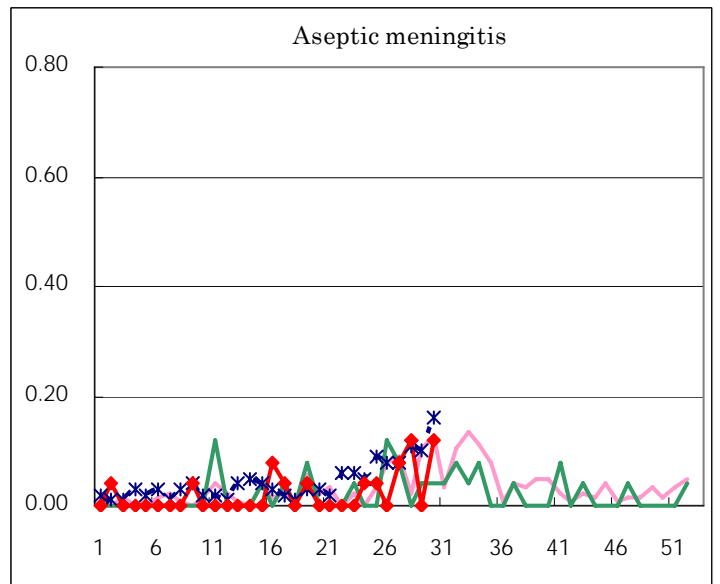
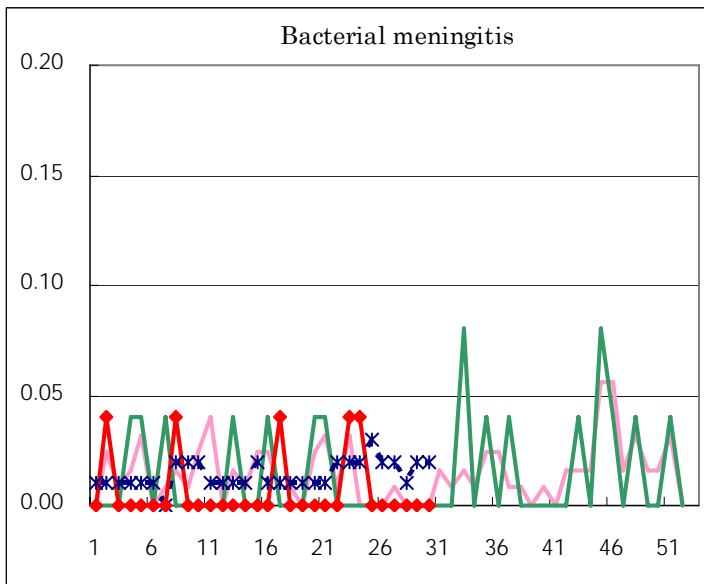
(Blank means 0.)

Disease Trend Graph (weekly reported cases per fixed-point in comparison)









Tokyo Metropolitan Government
Infectious Disease Surveillance Center