

INFECTIOUS DISEASES WEEKLY REPORT

# TOKYO IDWR

Tokyo Metropolitan Institute of Public Health

15 August 2006 / Number 31

- Number of patients with the diseases required notifying all the cases
- Number of patients with the diseases to be reported by the sentinel clinics and hospitals
- Disease trend graph (weekly reported cases per sentinel in comparison)

## Surveillance System in Tokyo, Japan

### The infectious diseases which all physicians must report

All physicians must report to health centers the incidence of the diseases which are shown at page one. Health centers electronically report the individual cases to Tokyo Metropolitan Infectious Disease Surveillance Center.

### The infectious diseases required to be reported by the sentinels

The numbers of patients who visit the sentinel clinics or hospitals during a week are reported to health centers in Tokyo. And they electronically report the numbers to Tokyo Metropolitan Infectious Disease Surveillance Center. We have about 260 sentinel clinics and hospitals in Tokyo.

1<sup>st</sup> Week is early January and 52<sup>nd</sup> Week is end of December.

Tokyo Metropolitan Infectious Disease Surveillance Center  
Tokyo Metropolitan Institute of Public Health

TEL:81-3-3363-3213 FAX:81-3-5332-7365  
e-mail:[idsc@tokyo-eiken.go.jp](mailto:idsc@tokyo-eiken.go.jp)  
URL:[idsc.tokyo-eiken.go.jp/](http://idsc.tokyo-eiken.go.jp/)

## Number of patients with the diseases which all physicians must report

Category	Diseases	Tokyo				Japan		
		28th	29th	30th	31st	Total	31st	Total
I	Ebola hemorrhagic fever							
	Crimean-Congo hemorrhagic fever							
	Severe acute respiratory syndrome							
	Smallpox							
	Plague							
	Marburg disease							
	Lassa fever							
II	Acute poliomyelitis							
	Cholera				1	5	1	31
	Shigellosis				3	33	7	229
	Diphtheria							
	Typhoid fever	1			2	16	2	49
	Paratyphoid fever				1	10	1	15
III	Enterohemorrhagic <i>Escherichia coli</i> infection	8	14	23	15	135	145	1494
IV	Hepatitis E		1			3		43
	West Nile fever							
	Hepatitis A					23	1	234
	Echinococcosis							15
	Yellow fever							
	Psittacosis					3		15
	Relapsing fever							
	Q fever							1
	Rabies							
	High pathogenic avian influenza							
	Coccidioidomycosis							1
	Monkeypox							
	Hemorrhagic fever with renal syndrome							
	Anthrax							
	Scrub typhus (Tsutsugamushi disease)							171
	Dengue fever		2			7	2	26
	Nipah virus infection							
	Japanese spotted fever							14
	Japanese encephalitis							
	Hantavirus pulmonary syndrome							
	B virus disease							
	Brucellosis					1		2
	Epidemic typhus							
Botulism							1	
Malaria	1	1			10	1	33	
Tularemia								
Lyme disease							3	
Lyssavirus infection								
Legionellosis		1	2		6	41	23	249
Leptospirosis								1
V	Amebiasis	7	2	7	2	113	7	418
	Acute viral hepatitis(excluding Hepatitis A,Hepatitis E)				1	21	2	141
	Acute encephalitis					4		100
	Cryptosporidiosis					5	2	8
	Creutzfeldt-Jakob Disease				1	11	7	91
	Sever invasive streptococcal infections				1	11	1	76
	Acquired immunodeficiency syndrome	7	9	8	4	264	13	702
	Giardiasis			2		15	1	53
	Meningococcal meningitis					1		9
	Congenital rubella syndrome							
	Syphilis	4	7	5	8	77	5	353
	Tetanus	1				4	2	55
	Vancomycin-resistant <i>Staphylococcus aureus</i> infection							
	Vancomycin-resistant <i>enterococcus</i> infection	2			1	8		44

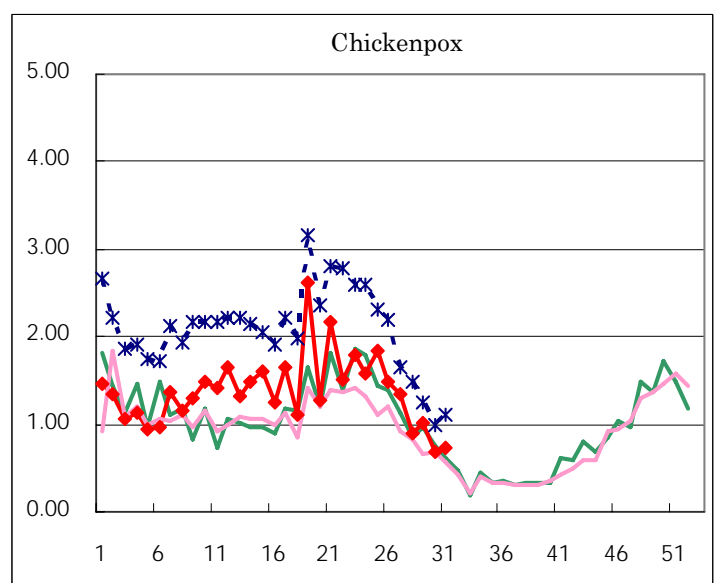
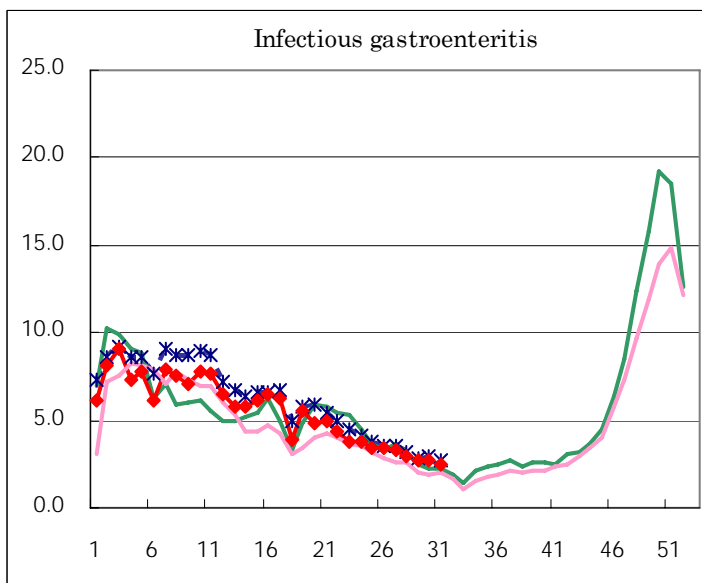
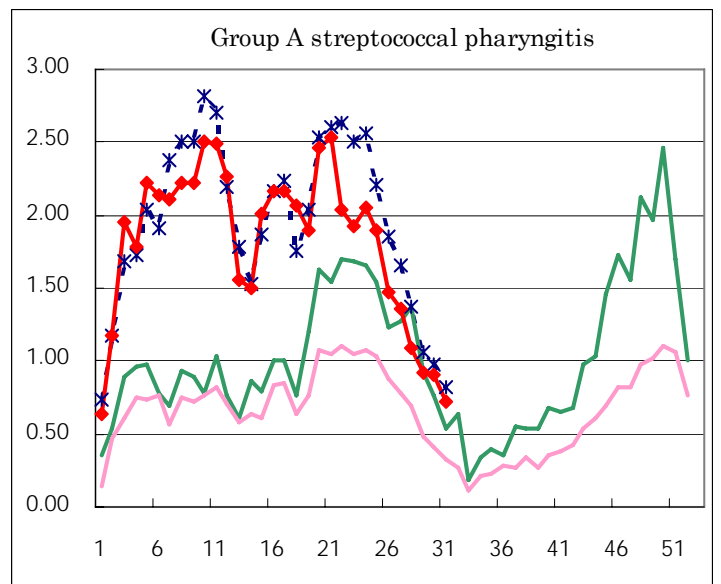
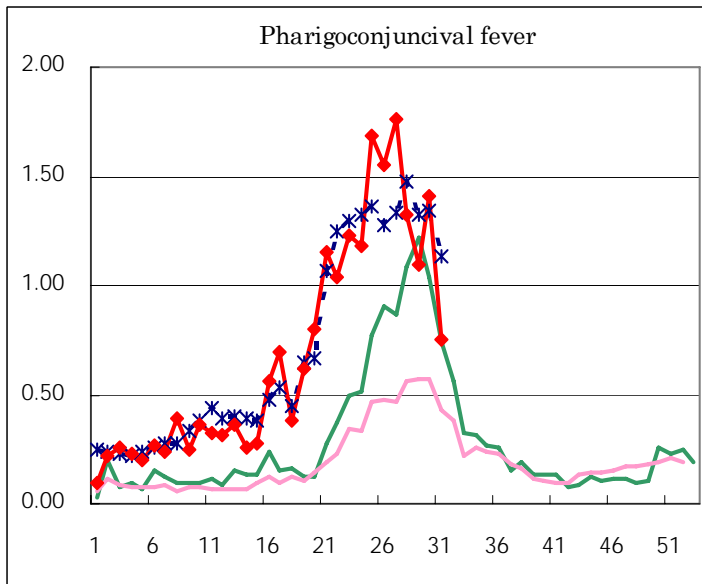
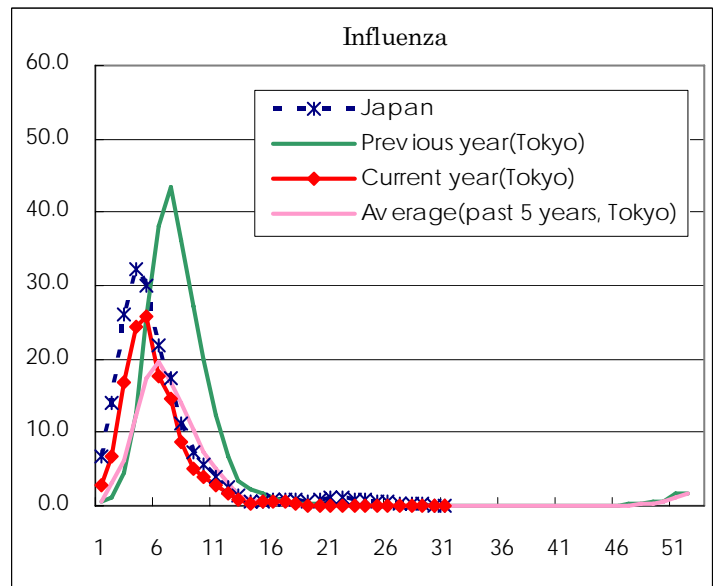
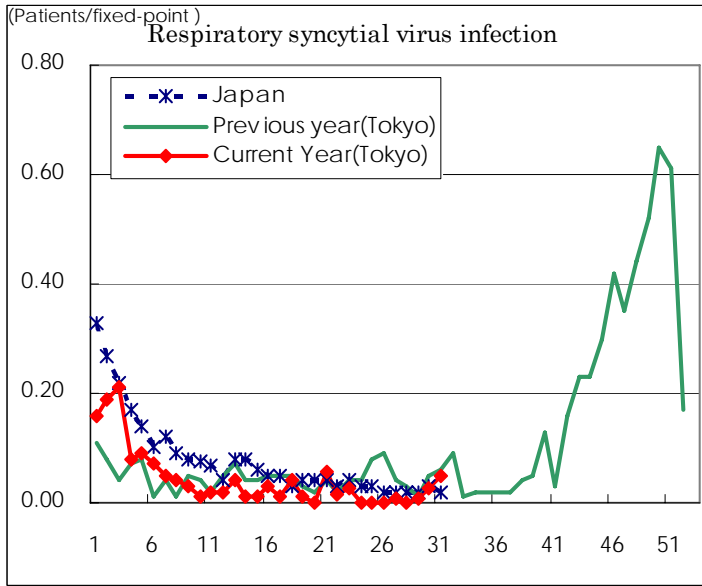
( Blank means 0. )

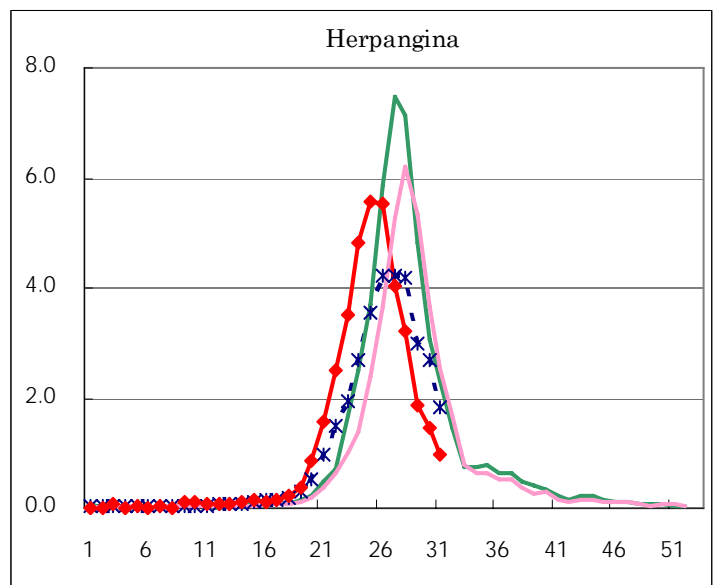
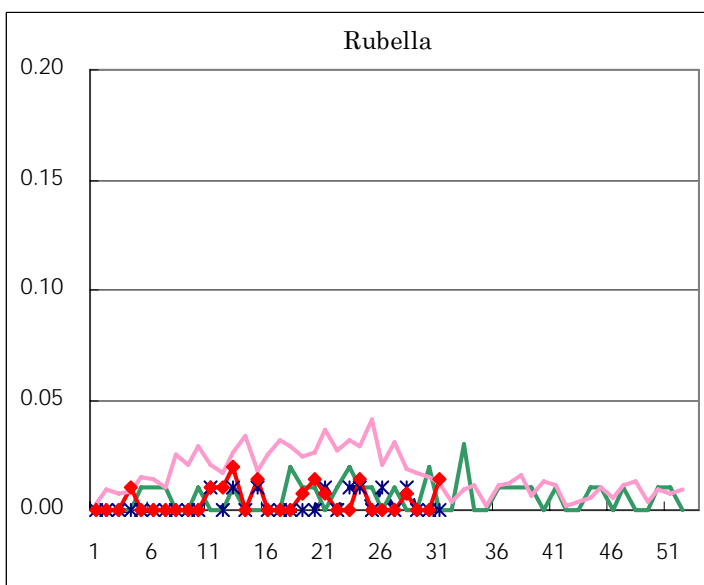
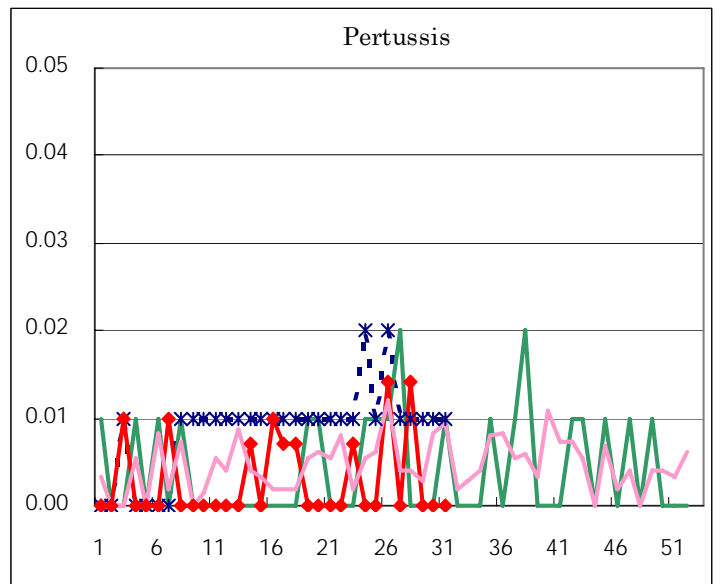
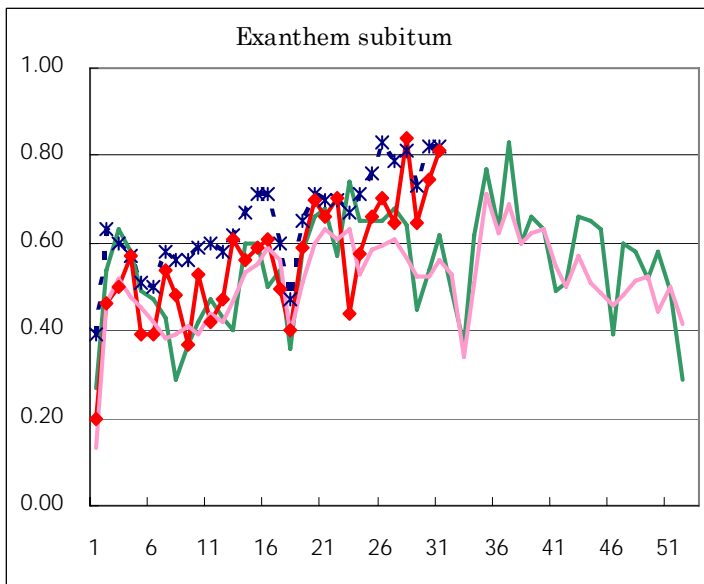
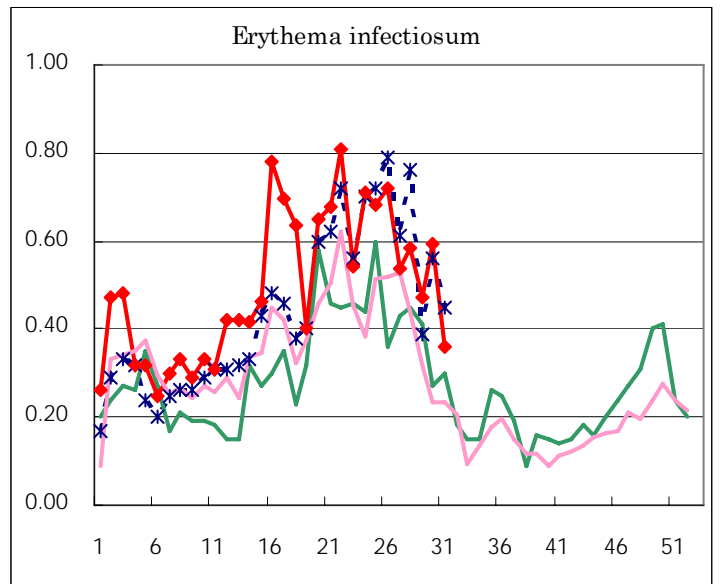
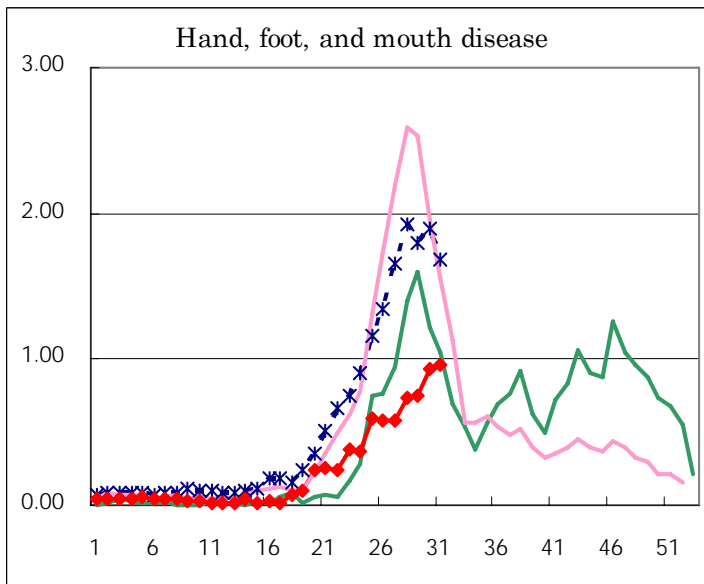
Number of patients with the diseases to be reported  
by the designated clinics and hospitals

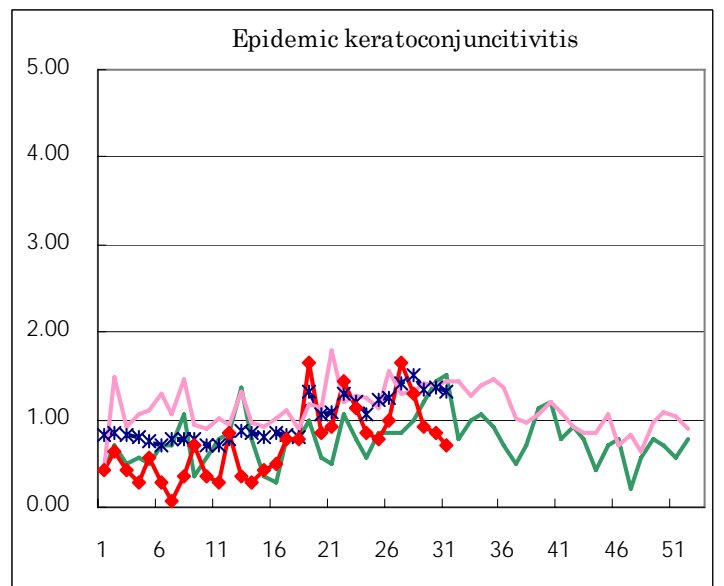
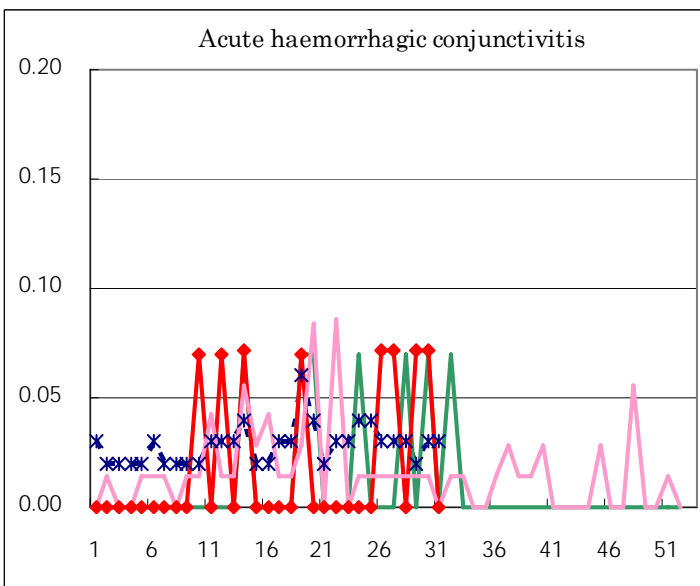
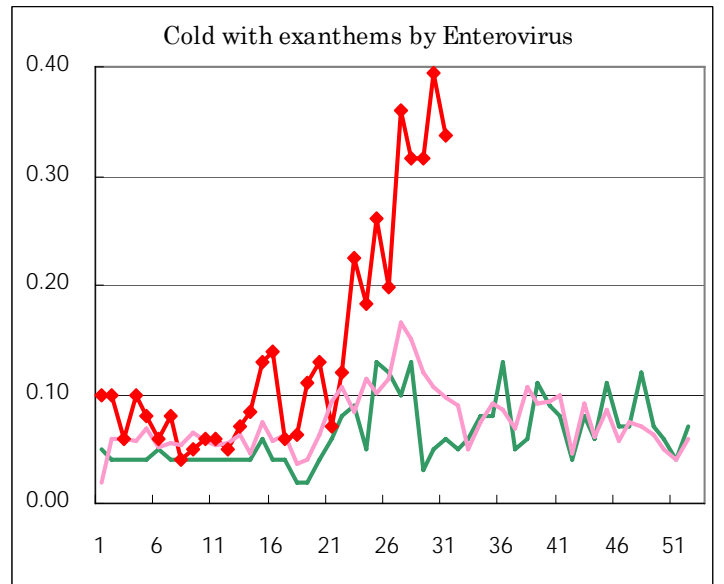
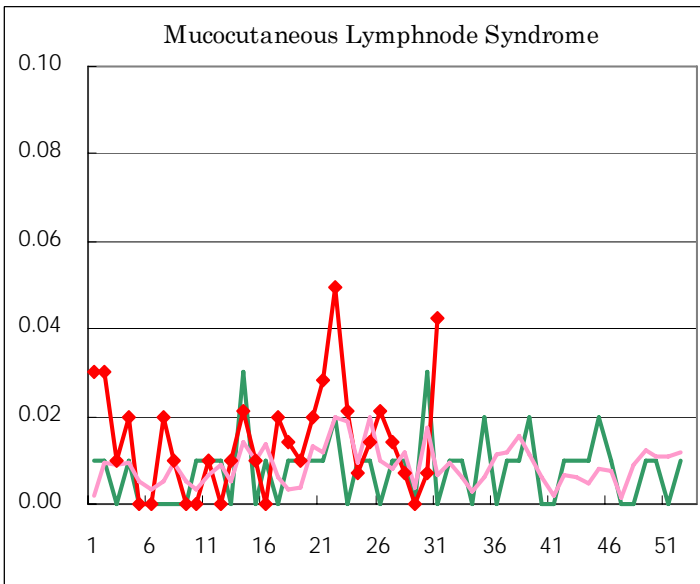
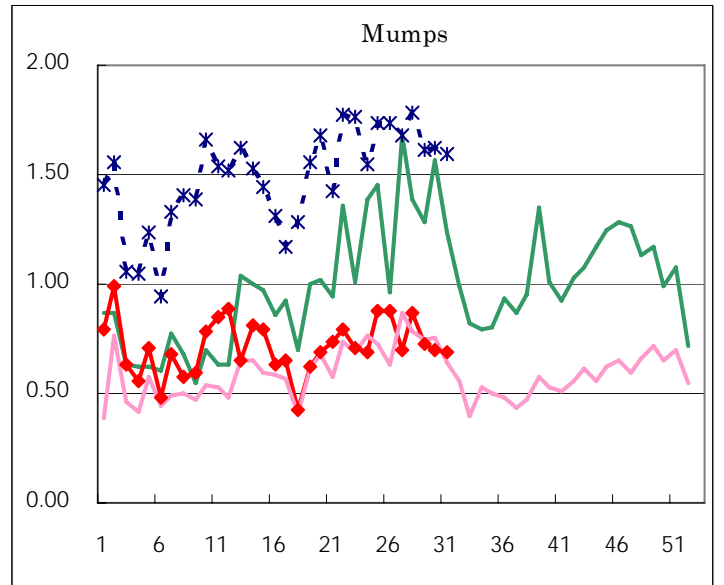
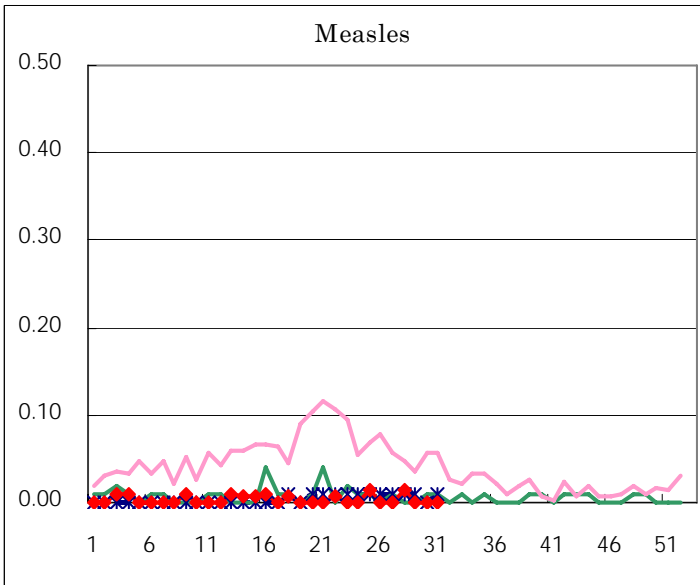
Diseases	Sex	2006				Total
		28th	29th	30th	31st	
Respiratory syncytial virus infection	M		1	1	4	6
	F			3	3	6
Influenza	M					
	F		2	1		3
Pharyngoconjunctival fever	M	101	84	112	59	356
	F	87	72	88	48	295
Group A streptococcal pharyngitis	M	81	68	61	51	261
	F	73	63	67	52	255
Infectious gastroenteritis	M	232	213	223	175	843
	F	182	173	165	169	689
Chickenpox	M	78	78	48	60	264
	F	50	66	50	43	209
Hand, foot, and mouth disease	M	58	61	74	68	261
	F	46	45	59	66	216
Erythema infectiosum	M	37	34	48	20	139
	F	46	33	36	28	143
Exanthem subitum	M	68	50	49	61	228
	F	51	42	57	54	204
Pertussis	M	1				1
	F	1				1
Rubella	M	1			1	2
	F				1	1
Herpangina	M	228	142	110	67	547
	F	230	123	96	68	517
Measles	M	1				1
	F	1				1
Mumps	M	74	55	56	47	232
	F	49	48	43	49	189
Cold with exanthems by Enterovirus	M	23	34	23	23	103
	F	22	11	33	24	90
Mucocutaneous Lymphnode Syndrome	M			1	2	3
	F	1			4	5
Acute hemorrhagic conjunctivitis	M			1		1
	F		1			1
Epidemic keratoconjunctivitis	M	10	8	8	5	31
	F	8	5	4	5	22
Bacterial meningitis	M					
	F					
Aseptic meningitis	M	3		3	1	7
	F					
Mycoplasma pneumonia	M	3	3		1	7
	F	5	2			7
Chlamydial pneumonia (excluding psittacosis)	M					
	F					
Measles in adults	M					
	F					

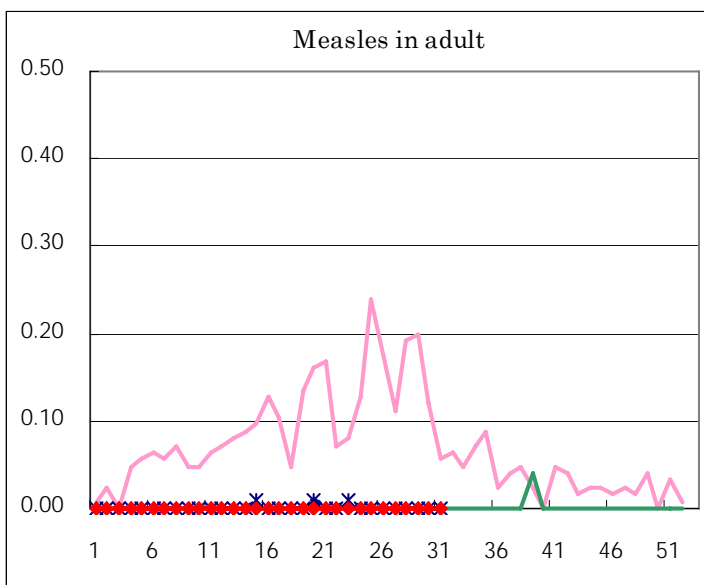
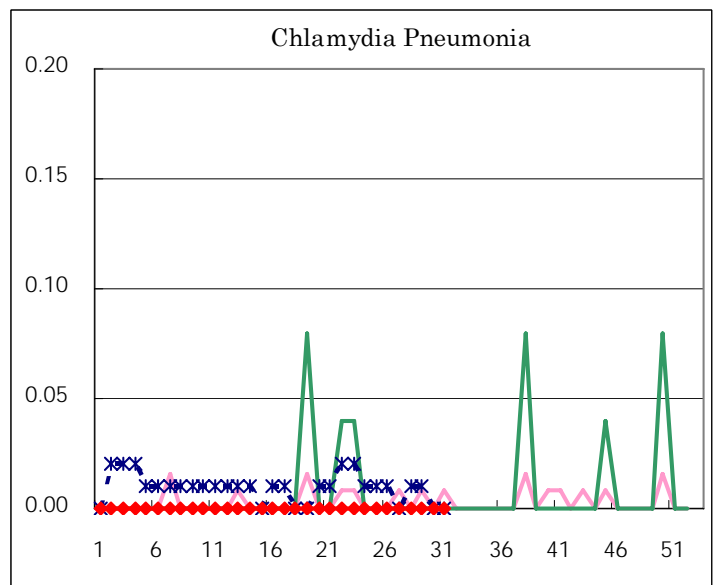
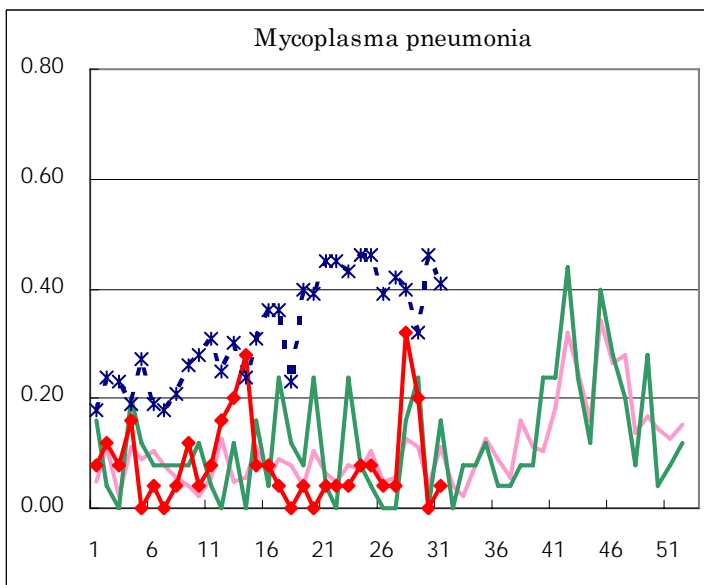
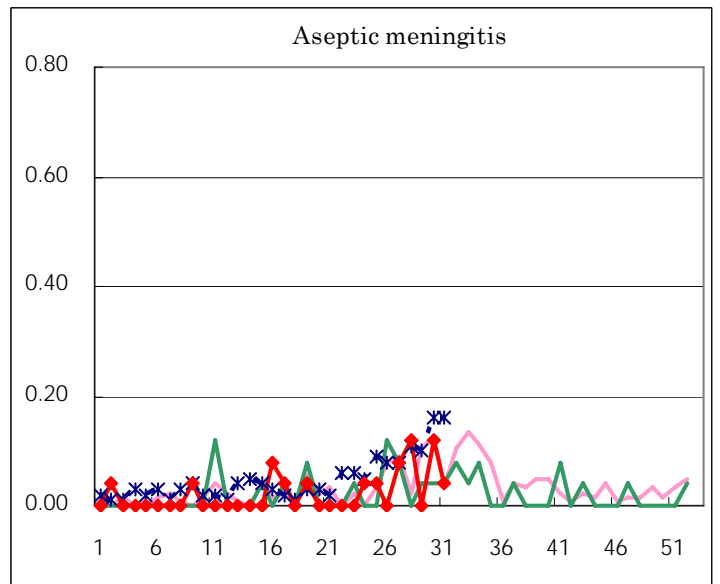
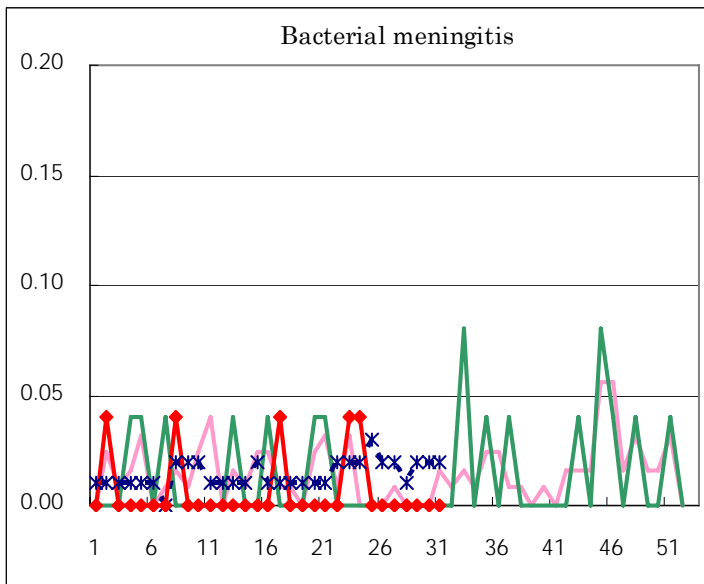
( Blank means 0. )

# Disease Trend Graph (weekly reported cases per fixed-point in comparison)









Tokyo Metropolitan Government  
**Infectious Disease Surveillance Center**