

INFECTIOUS DISEASES WEEKLY REPORT

TOKYO IDWR

Tokyo Metropolitan Institute of Public Health

29 August 2006 / Number 33

- Number of patients with the diseases required notifying all the cases
- Number of patients with the diseases to be reported by the sentinel clinics and hospitals
- Disease trend graph (weekly reported cases per sentinel in comparison)

Surveillance System in Tokyo, Japan

The infectious diseases which all physicians must report

All physicians must report to health centers the incidence of the diseases which are shown at page one. Health centers electronically report the individual cases to Tokyo Metropolitan Infectious Disease Surveillance Center.

The infectious diseases required to be reported by the sentinels

The numbers of patients who visit the sentinel clinics or hospitals during a week are reported to health centers in Tokyo. And they electronically report the numbers to Tokyo Metropolitan Infectious Disease Surveillance Center. We have about 260 sentinel clinics and hospitals in Tokyo.

1st Week is early January and 52nd Week is end of December.

Tokyo Metropolitan Infectious Disease Surveillance Center
Tokyo Metropolitan Institute of Public Health

TEL:81-3-3363-3213 FAX:81-3-5332-7365
e-mail:idsc@tokyo-eiken.go.jp
URL:idsc.tokyo-eiken.go.jp/

Number of patients with the diseases which all physicians must report

Category	Diseases	Tokyo				Japan		
		30th	31st	32nd	33rd	Total	33rd	Total
I	Ebola hemorrhagic fever							
	Crimean-Congo hemorrhagic fever							
	Severe acute respiratory syndrome							
	Smallpox							
	Plague							
	Marburg disease							
	Lassa fever							
II	Acute poliomyelitis							
	Cholera		1		1	6	2	32
	Shigellosis		3	2		35	10	247
	Diphtheria							
	Typhoid fever		2			16		52
	Paratyphoid fever		1			10		16
III	Enterohemorrhagic <i>Escherichia coli</i> infection	23	15	8	10	153	158	1863
IV	Hepatitis E					3		45
	West Nile fever							
	Hepatitis A					23	3	233
	Echinococcosis				1	1		15
	Yellow fever							
	Psittacosis					3		15
	Relapsing fever							
	Q fever							1
	Rabies							
	High pathogenic avian influenza							
	Coccidioidomycosis							1
	Monkeypox							
	Hemorrhagic fever with renal syndrome							
	Anthrax							
	Scrub typhus (Tsumugamushi disease)							174
	Dengue fever					7	1	29
	Nipah virus infection							
	Japanese spotted fever						1	14
	Japanese encephalitis							
	Hantavirus pulmonary syndrome							
	B virus disease							
Brucellosis					1		3	
Epidemic typhus								
Botulism							1	
Malaria						10	2	36
Tularemia								
Lyme disease								3
Lyssavirus infection								
Legionellosis	2	6	2	2	45	10	291	
Leptospirosis								1
V	Amebiasis	7	2	3	7	123	12	449
	Acute viral hepatitis(excluding Hepatitis A,Hepatitis E)		1			21	5	153
	Acute encephalitis					4	1	102
	Cryptosporidiosis					5		10
	Creutzfeldt-Jakob Disease		1			11	1	99
	Sever invasive streptococcal infections		1			11		80
	Acquired immunodeficiency syndrome	8	4	9	8	281	17	748
	Giardiasis	2			1	16	2	55
	Meningococcal meningitis					1		9
	Congenital rubella syndrome							
	Syphilis	5	8	1	1	79	4	376
	Tetanus			2		6	2	60
	Vancomycin-resistant <i>Staphylococcus aureus</i> infection							
	Vancomycin-resistant <i>enterococcus</i> infection		1			8		44

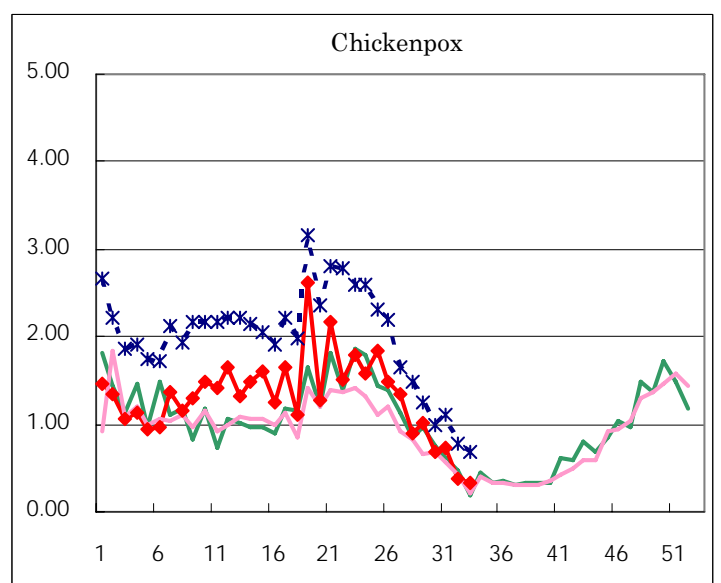
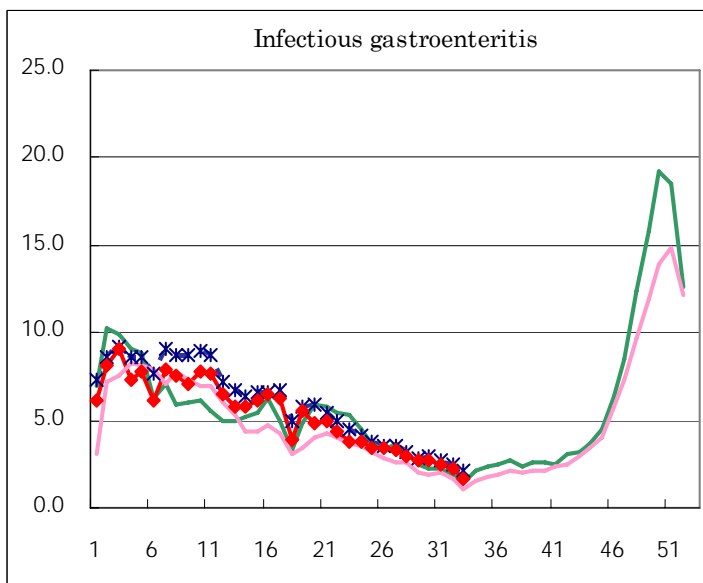
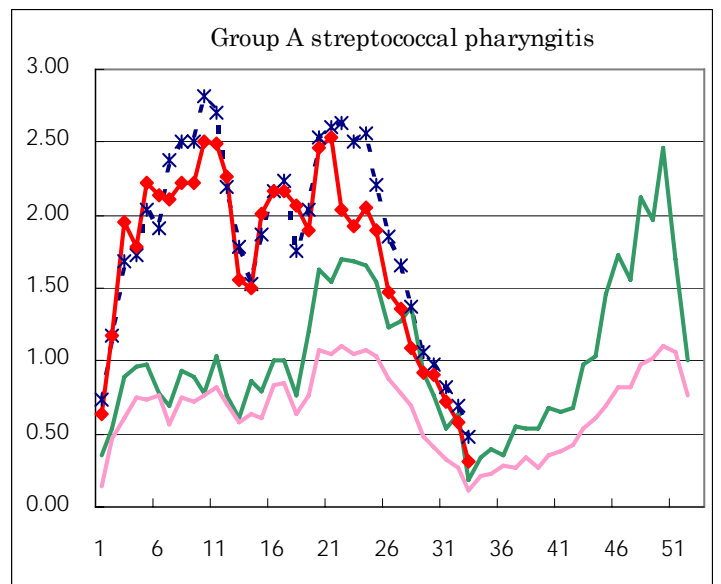
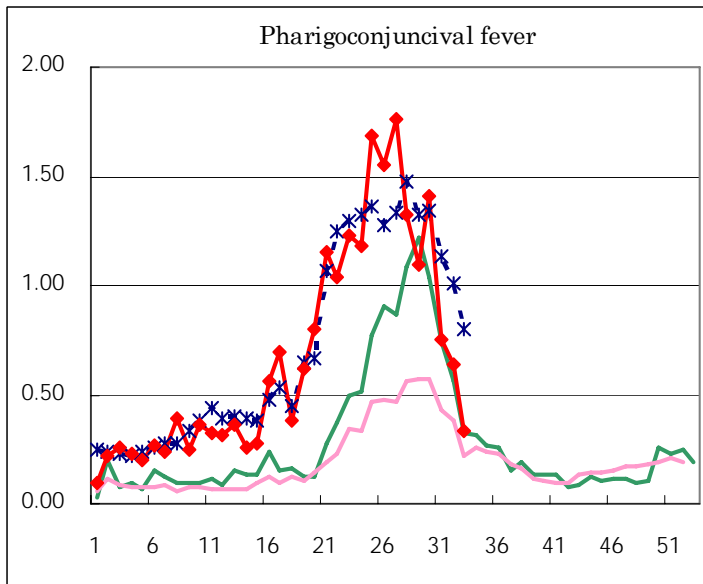
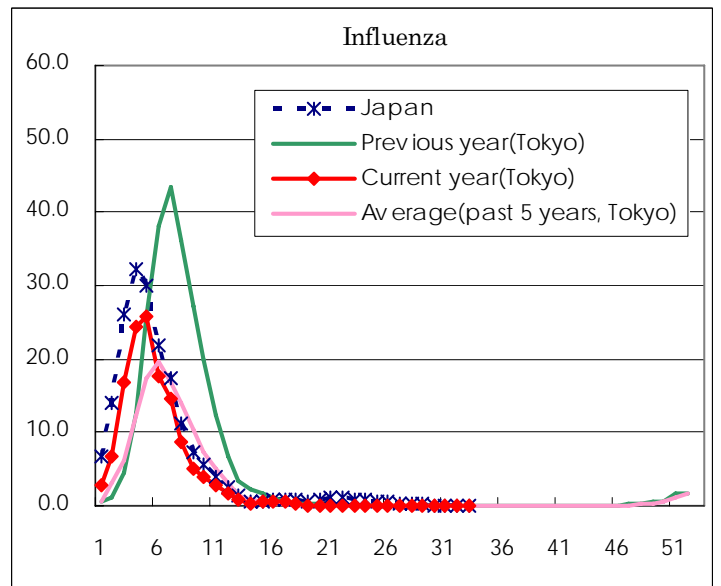
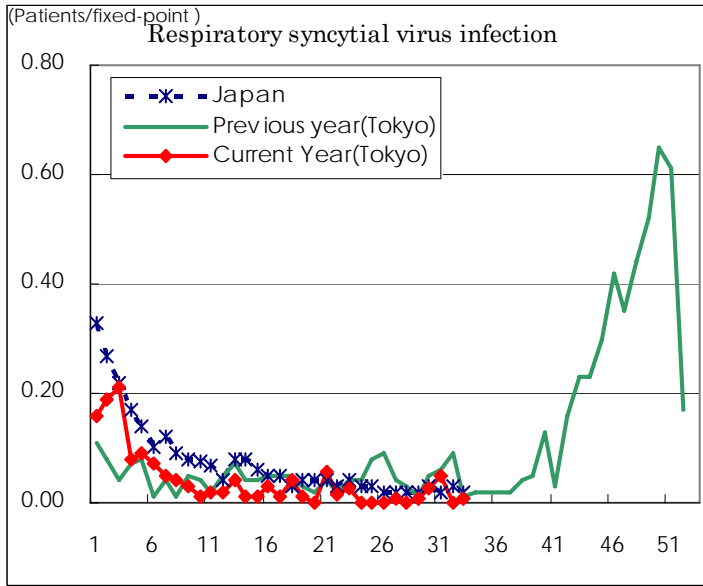
(Blank means 0.)

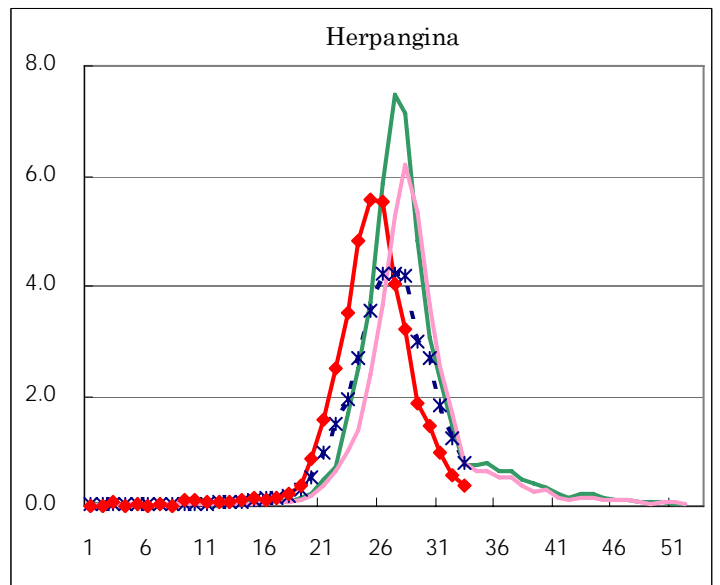
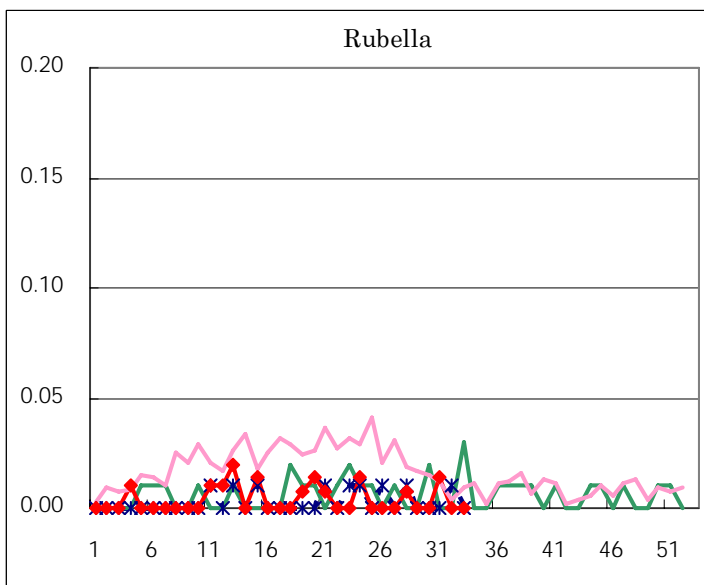
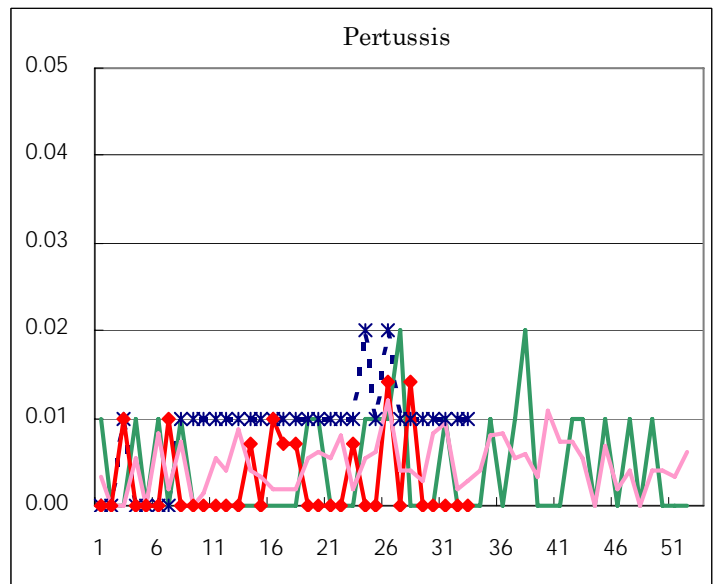
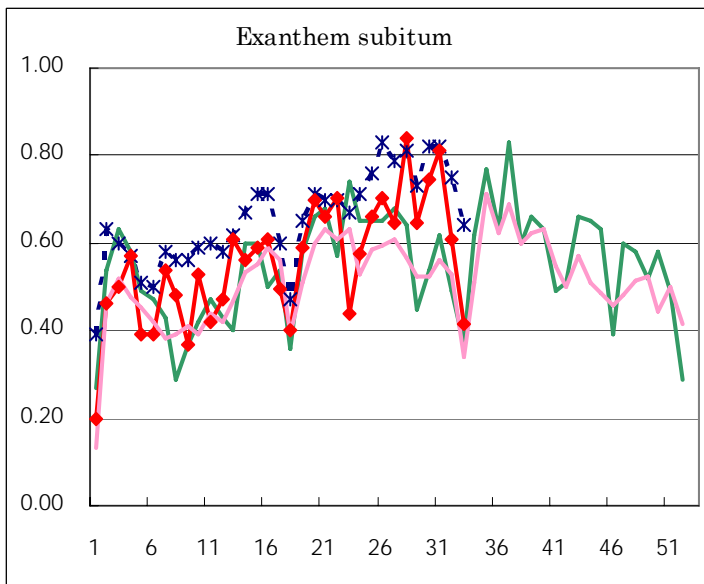
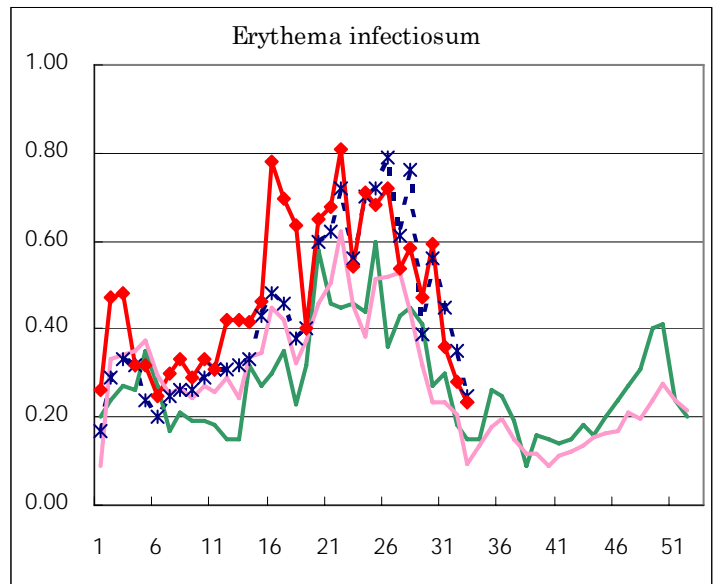
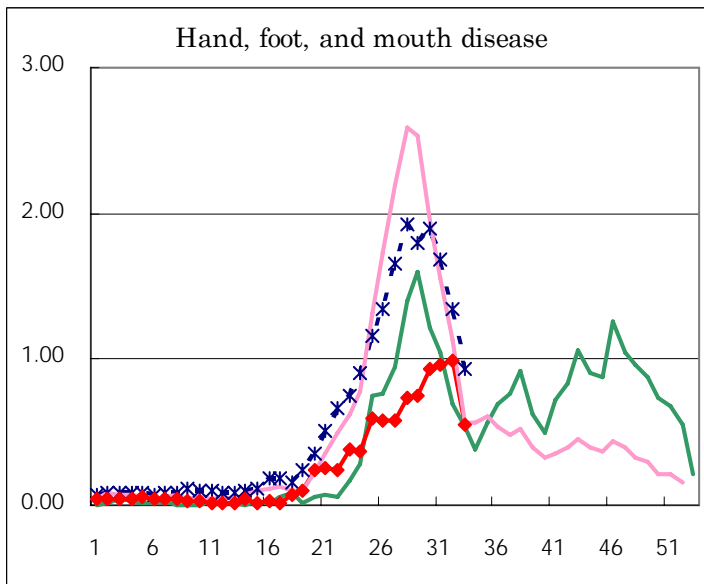
Number of patients with the diseases to be reported
by the designated clinics and hospitals

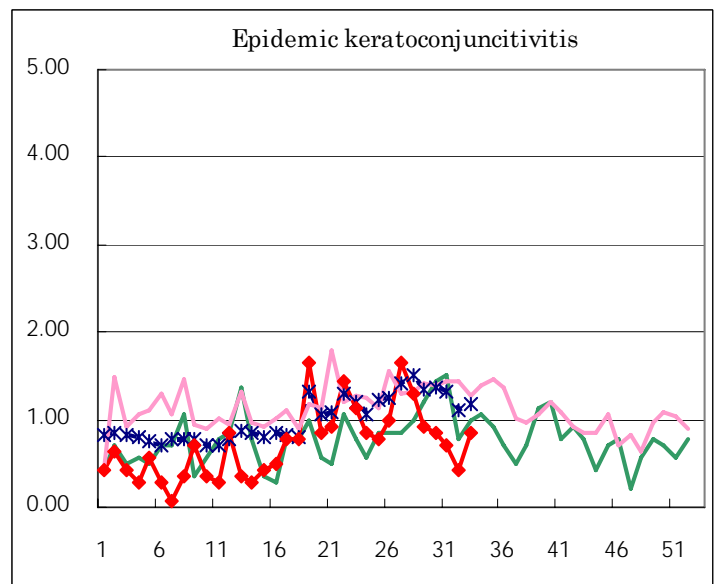
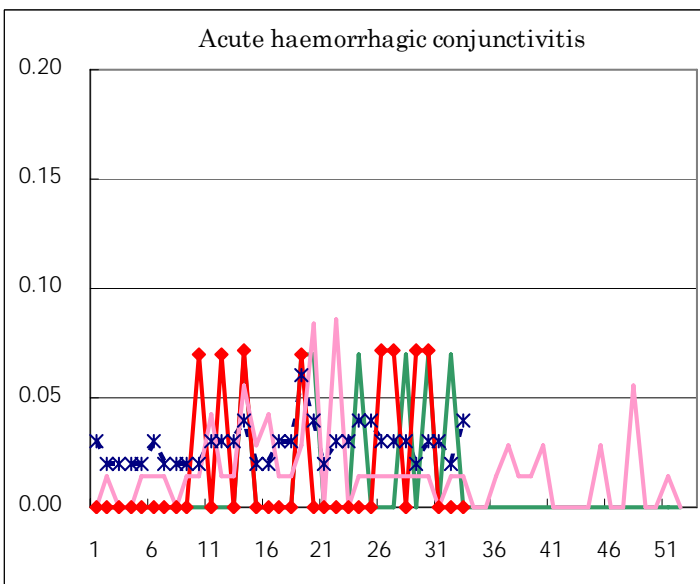
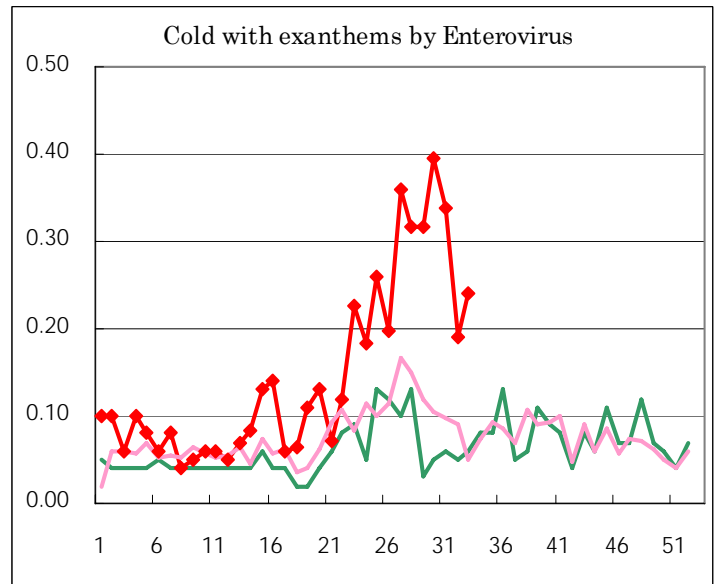
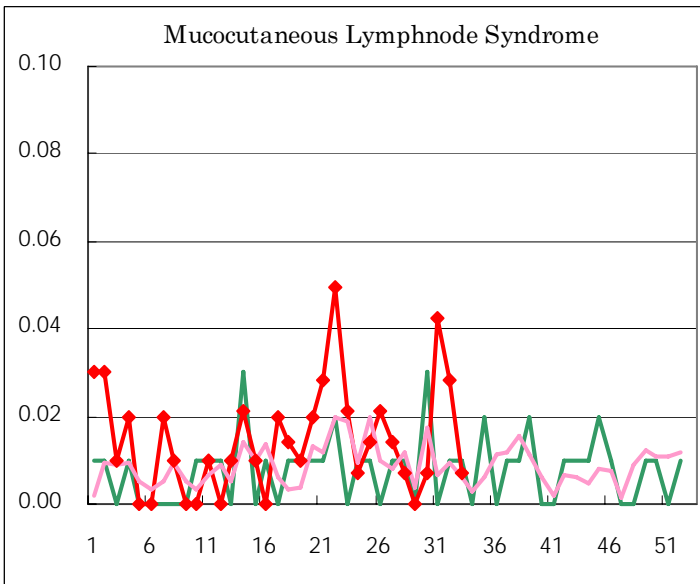
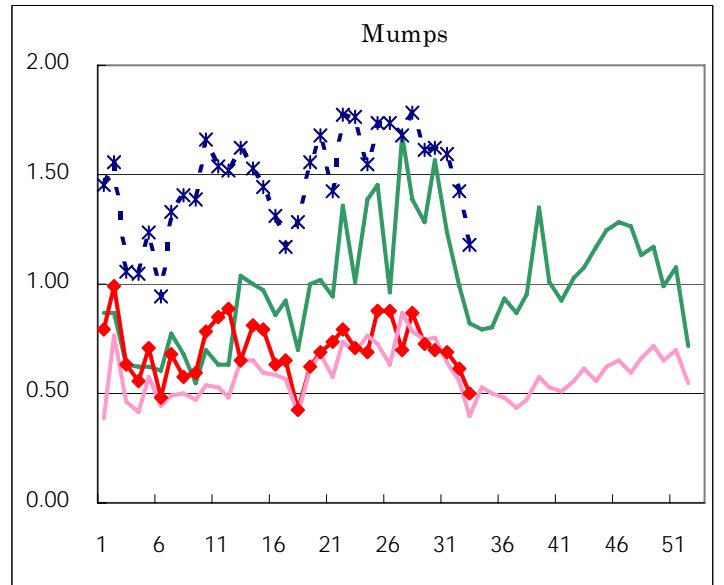
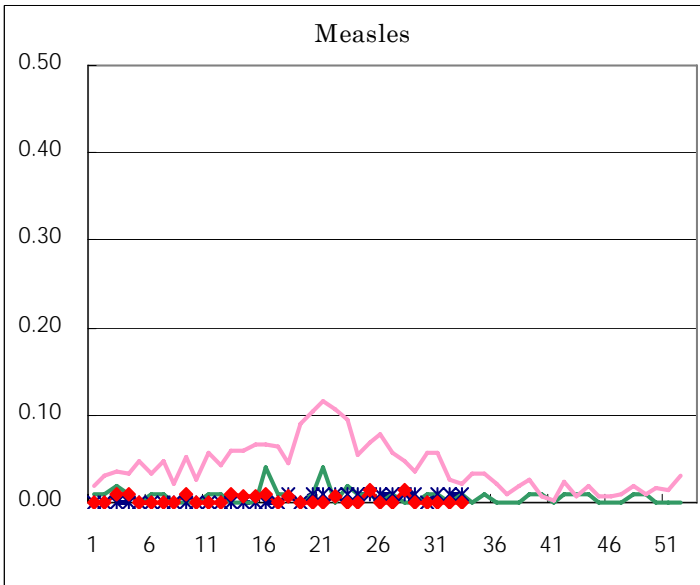
Diseases	Sex	2006				Total
		30th	31st	32nd	33rd	
Respiratory syncytial virus infection	M	1	4		1	6
	F	3	3			6
Influenza	M					
	F	1		1		2
Pharyngoconjunctival fever	M	112	59	47	29	247
	F	88	48	44	19	199
Group A streptococcal pharyngitis	M	61	51	49	20	181
	F	67	52	34	24	177
Infectious gastroenteritis	M	223	175	169	131	698
	F	165	169	155	110	599
Chickenpox	M	48	60	33	24	165
	F	50	43	21	23	137
Hand, foot, and mouth disease	M	74	68	70	43	255
	F	59	66	71	36	232
Erythema infectiosum	M	48	20	22	9	99
	F	36	28	18	24	106
Exanthem subitum	M	49	61	40	35	185
	F	57	54	47	24	182
Pertussis	M					
	F					
Rubella	M		1			1
	F		1			1
Herpangina	M	110	67	42	23	242
	F	96	68	37	30	231
Measles	M					
	F					
Mumps	M	56	47	35	35	173
	F	43	49	52	36	180
Cold with exanthems by Enterovirus	M	23	23	10	19	75
	F	33	24	17	15	89
Mucocutaneous Lymphnode Syndrome	M	1	2	3	1	7
	F		4	1		5
Acute hemorrhagic conjunctivitis	M	1				1
	F					
Epidemic keratoconjunctivitis	M	8	5	3	8	24
	F	4	5	3	4	16
Bacterial meningitis	M					
	F			1		1
Aseptic meningitis	M	3	1	1	1	6
	F					
Mycoplasma pneumonia	M		1	1		2
	F			2	3	5
Chlamydial pneumonia (excluding psittacosis)	M			1		1
	F					
Measles in adults	M					
	F					

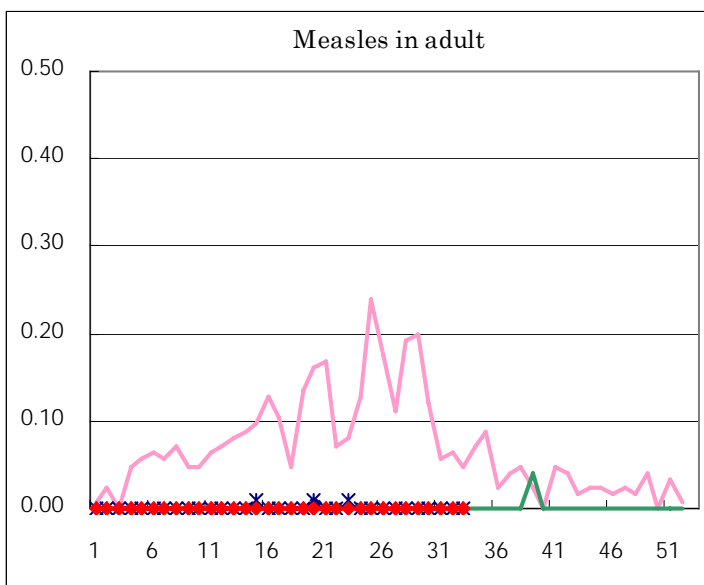
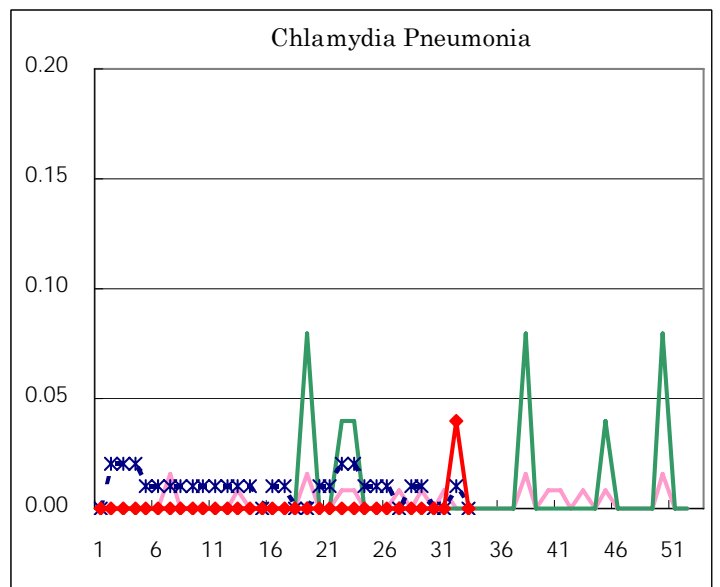
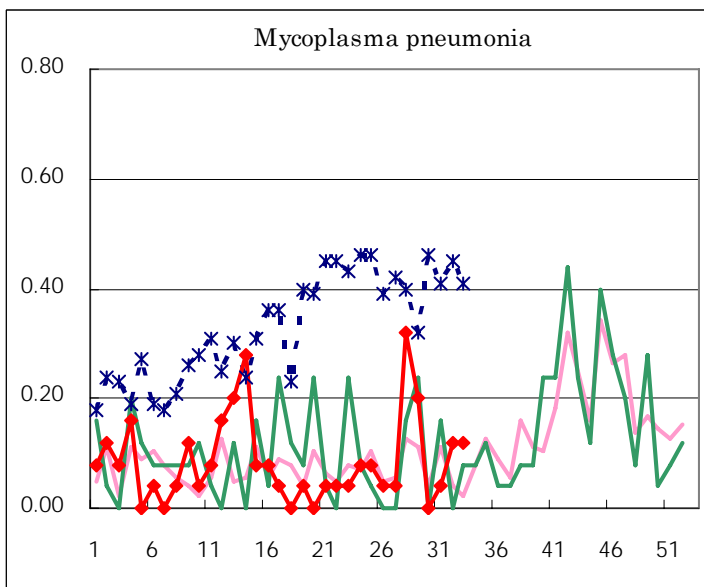
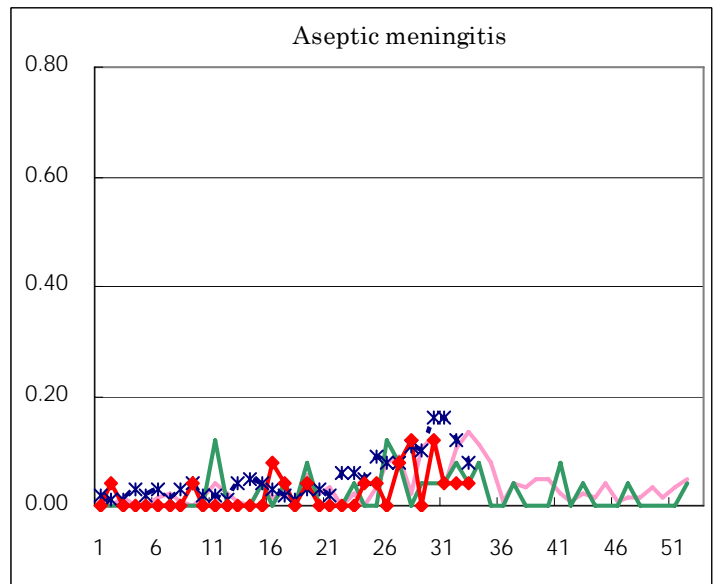
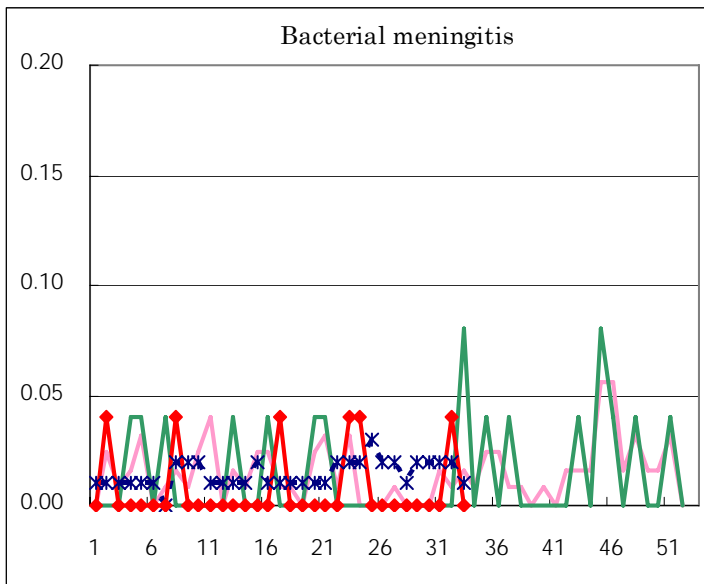
(Blank means 0.)

Disease Trend Graph (weekly reported cases per fixed-point in comparison)

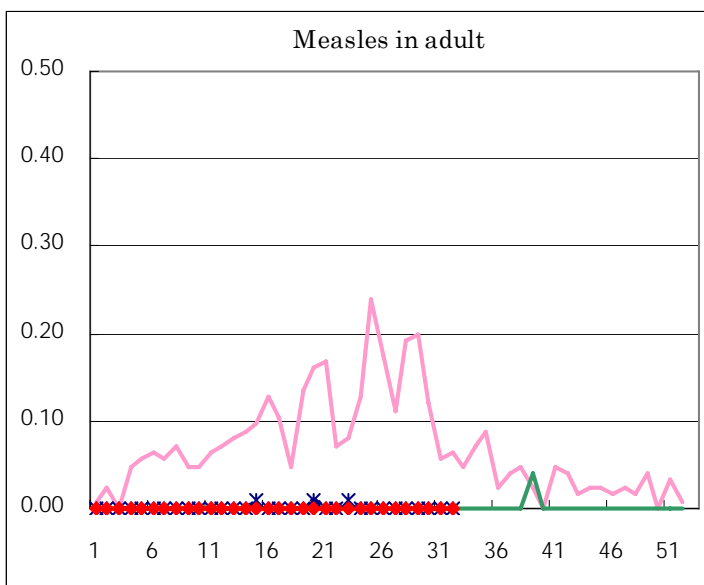
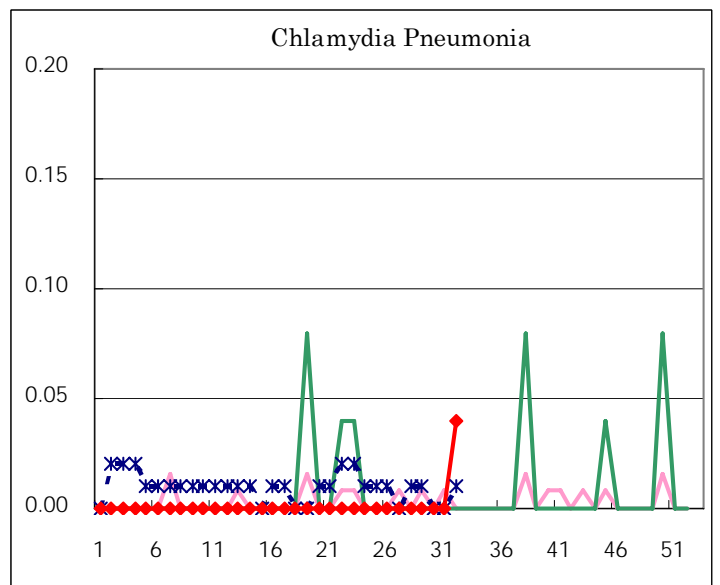
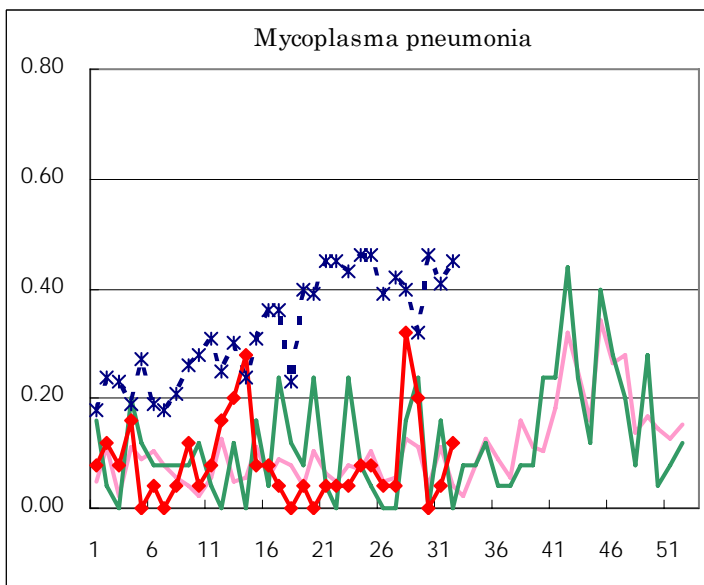
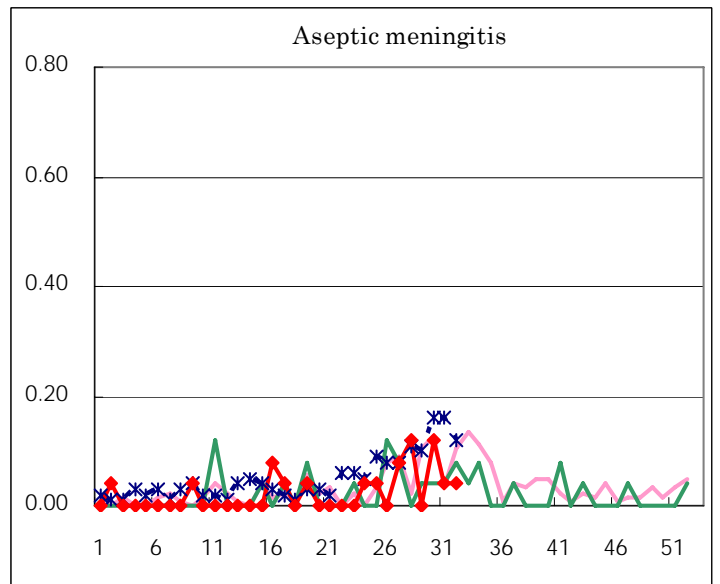
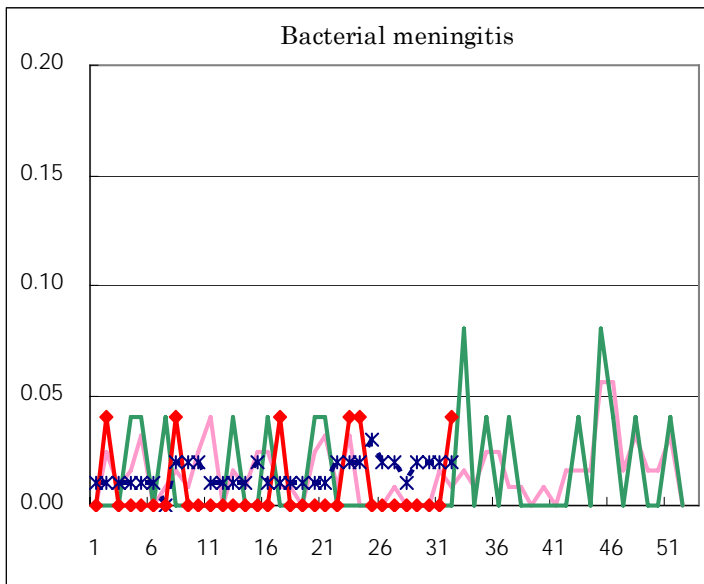








Tokyo Metropolitan Government
Infectious Disease Surveillance Center



Tokyo Metropolitan Government
Infectious Disease Surveillance Center