

INFECTIOUS DISEASES WEEKLY REPORT

TOKYO IDWR

Tokyo Metropolitan Institute of Public Health

19 September 2006 / Number 36

- Number of patients with the diseases required notifying all the cases
- Number of patients with the diseases to be reported by the sentinel clinics and hospitals
- Disease trend graph (weekly reported cases per sentinel in comparison)

Surveillance System in Tokyo, Japan

The infectious diseases which all physicians must report

All physicians must report to health centers the incidence of the diseases which are shown at page one. Health centers electronically report the individual cases to Tokyo Metropolitan Infectious Disease Surveillance Center.

The infectious diseases required to be reported by the sentinels

The numbers of patients who visit the sentinel clinics or hospitals during a week are reported to health centers in Tokyo. And they electronically report the numbers to Tokyo Metropolitan Infectious Disease Surveillance Center. We have about 260 sentinel clinics and hospitals in Tokyo.

1st Week is early January and 52nd Week is end of December.

Tokyo Metropolitan Infectious Disease Surveillance Center
Tokyo Metropolitan Institute of Public Health

TEL:81-3-3363-3213 FAX:81-3-5332-7365
e-mail:idsc@tokyo-eiken.go.jp
URL:idsc.tokyo-eiken.go.jp/

Number of patients with the diseases which all physicians must report

Category	Diseases	Tokyo				Japan			
		33rd	34th	35th	36th	Total	36th	Total	
I	Ebola hemorrhagic fever								
	Crimean-Congo hemorrhagic fever								
	Severe acute respiratory syndrome								
	Smallpox								
	Plague								
	Marburg disease								
	Lassa fever								
II	Acute poliomyelitis								
	Cholera	1				6	1	39	
	Shigellosis		2		2	39	11	302	
	Diphtheria								
	Typhoid fever					16	1	52	
	Paratyphoid fever					10	1	17	
III	Enterohemorrhagic <i>Escherichia coli</i> infection	10	15	19	8	195	158	2549	
IV	Hepatitis E					3		52	
	West Nile fever								
	Hepatitis A		1			24	13	250	
	Echinococcosis	1				1		16	
	Yellow fever								
	Psittacosis					3	1	15	
	Relapsing fever								
	Q fever							1	
	Rabies								
	High pathogenic avian influenza								
	Coccidioidomycosis							1	
	Monkeypox								
	Hemorrhagic fever with renal syndrome								
	Anthrax								
	Scrub typhus (Tsutsugamushi disease)							176	
	Dengue fever		5				12	2	31
	Nipah virus infection								
	Japanese spotted fever							1	19
	Japanese encephalitis								1
	Hantavirus pulmonary syndrome								
	B virus disease								
	Brucellosis						1		3
	Epidemic typhus								
Botulism								1	
Malaria				1	1	12	1	46	
Tularemia									
Lyme disease					1	1		7	
Lyssavirus infection									
Legionellosis	2	1			3	49	12	324	
Leptospirosis		1				1	4	3	
V	Amebiasis	7	5	4	4	136	5	507	
	Acute viral hepatitis(excluding Hepatitis A,Hepatitis E)		1	1	2	25	1	176	
	Acute encephalitis		1			5	1	117	
	Cryptosporidiosis					5	1	12	
	Creutzfeldt-Jakob Disease		1			12	4	107	
	Sever invasive streptococcal infections					11	1	85	
	Acquired immunodeficiency syndrome	8	9	13	9	312	13	858	
	Giardiasis	1	2		1	19		62	
	Meningococcal meningitis					1	1	10	
	Congenital rubella syndrome								
	Syphilis	1	3	3	3	88	4	415	
	Tetanus					6	2	73	
	Vancomycin-resistant <i>Staphylococcus aureus</i> infection								
	Vancomycin-resistant <i>enterococcus</i> infection					8	1	47	

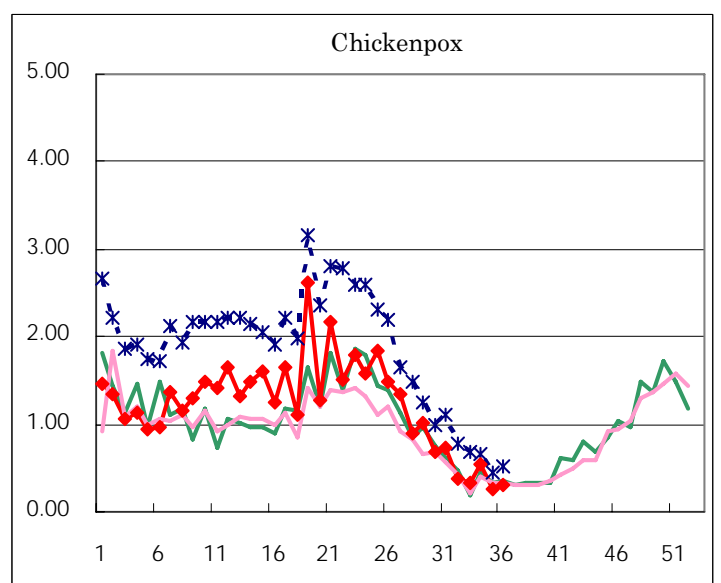
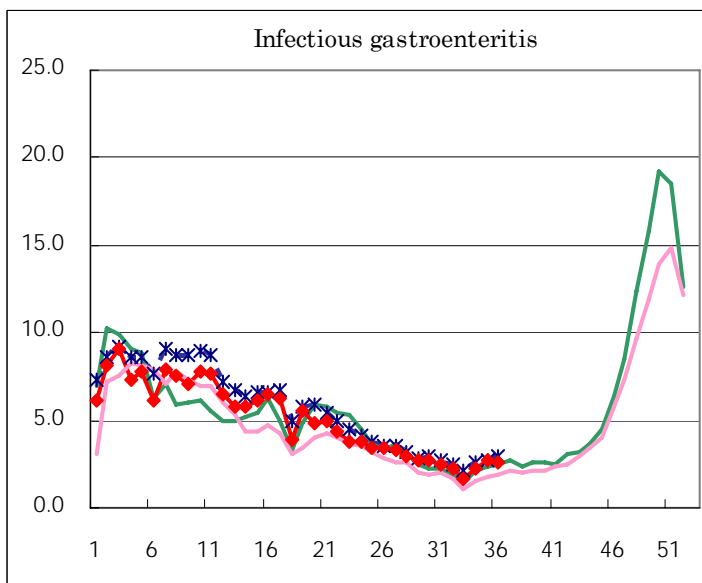
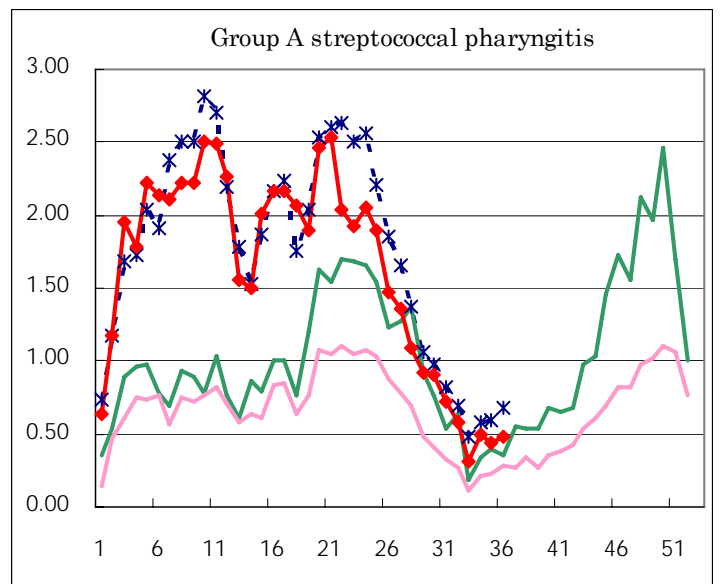
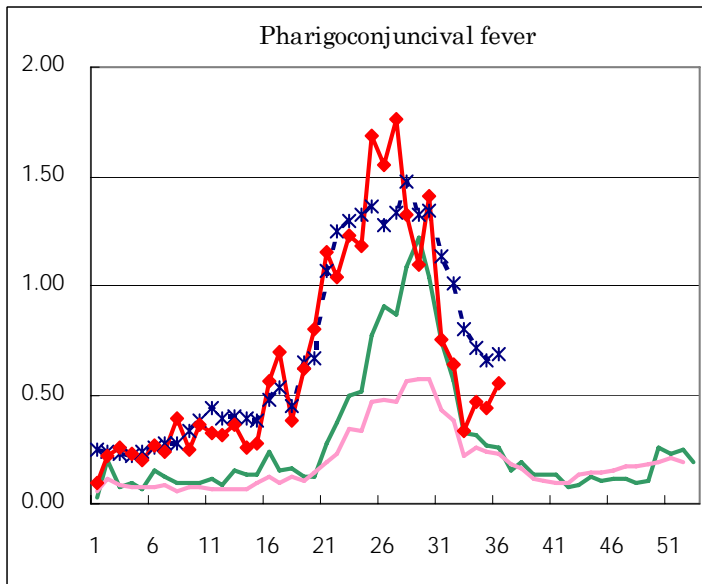
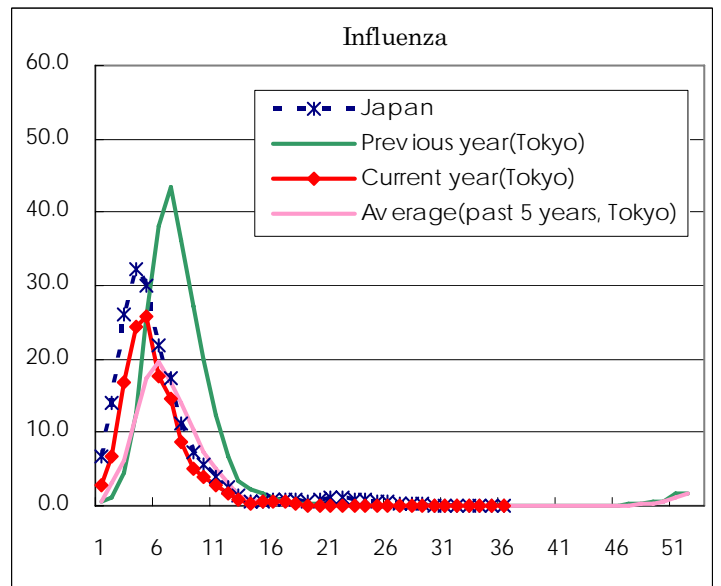
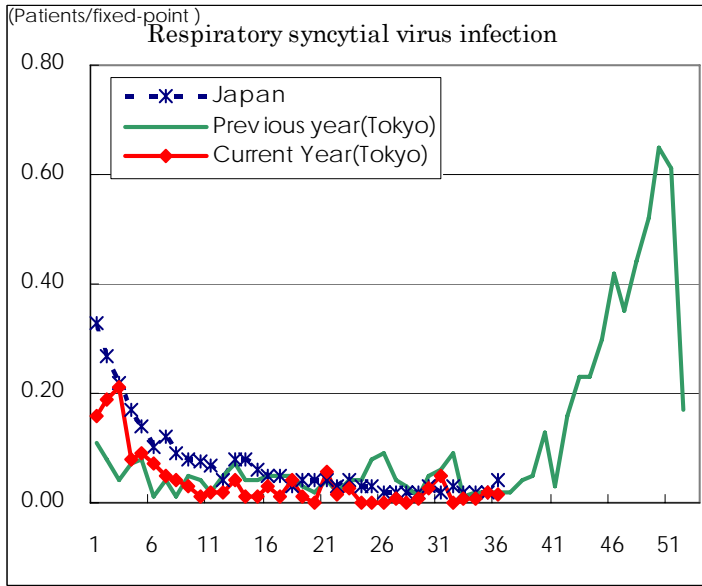
(Blank means 0.)

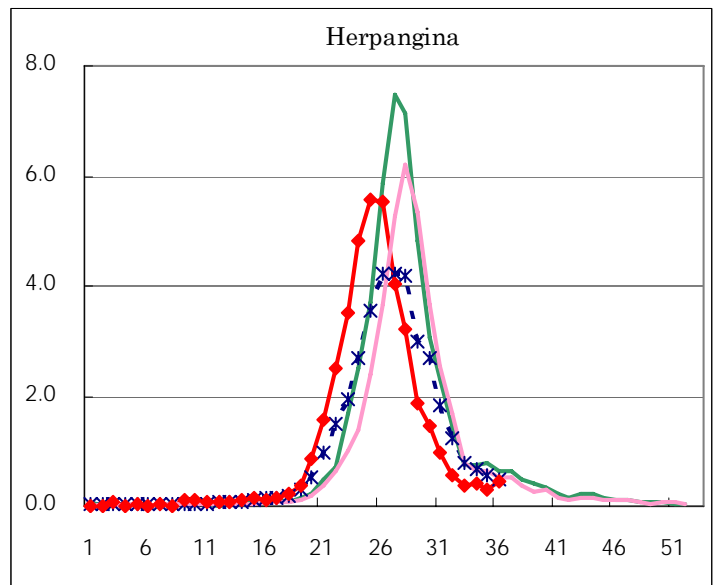
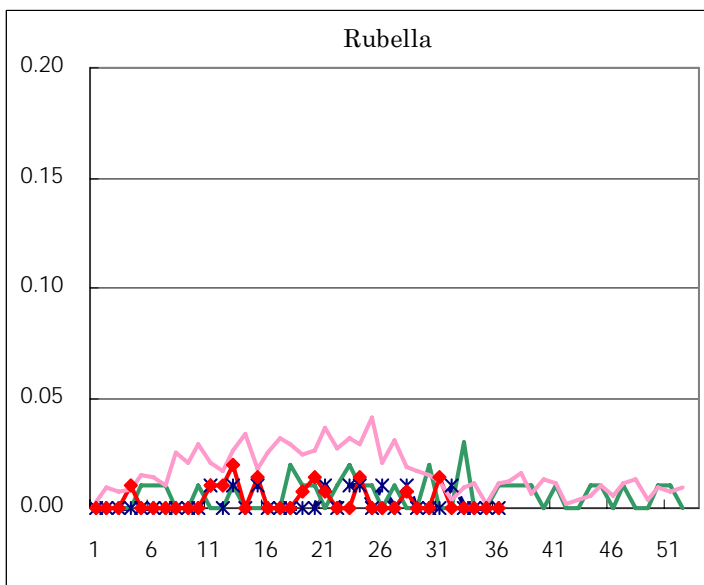
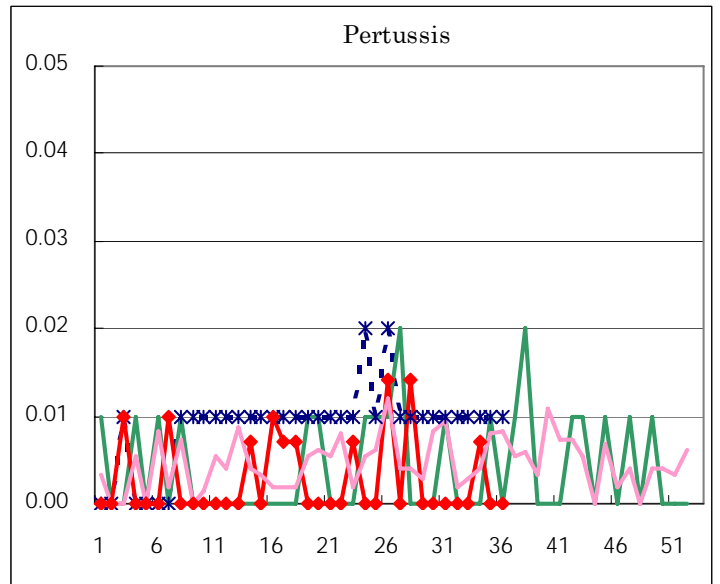
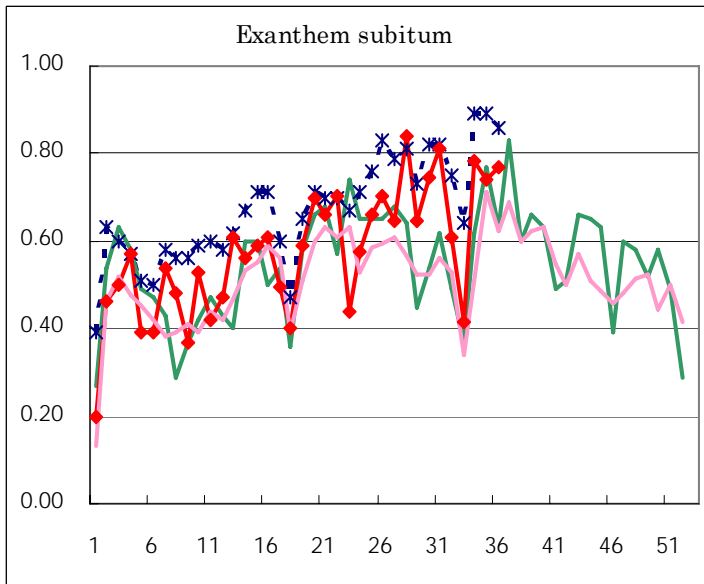
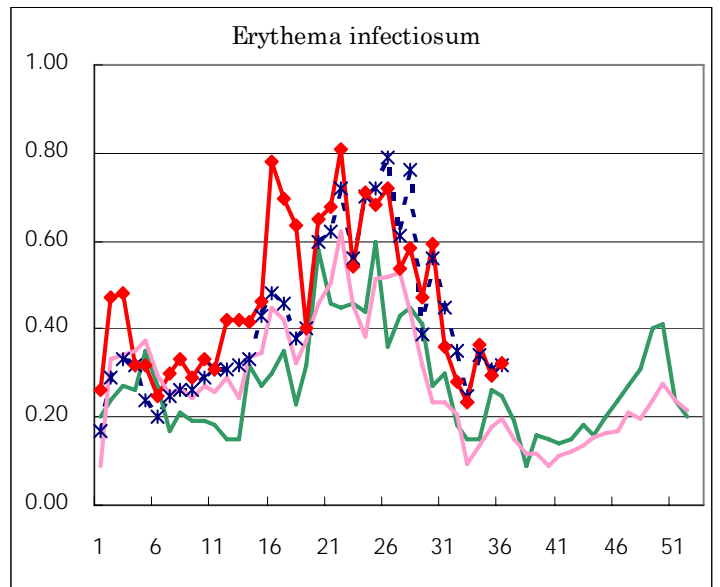
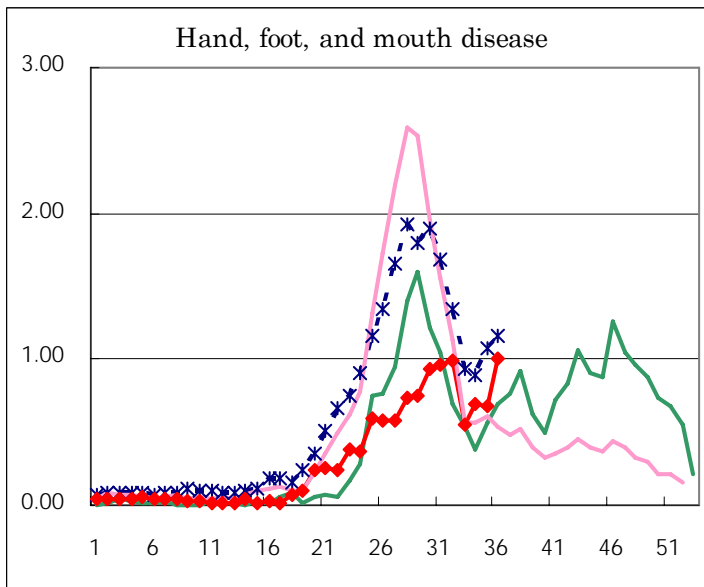
Number of patients with the diseases to be reported
by the designated clinics and hospitals

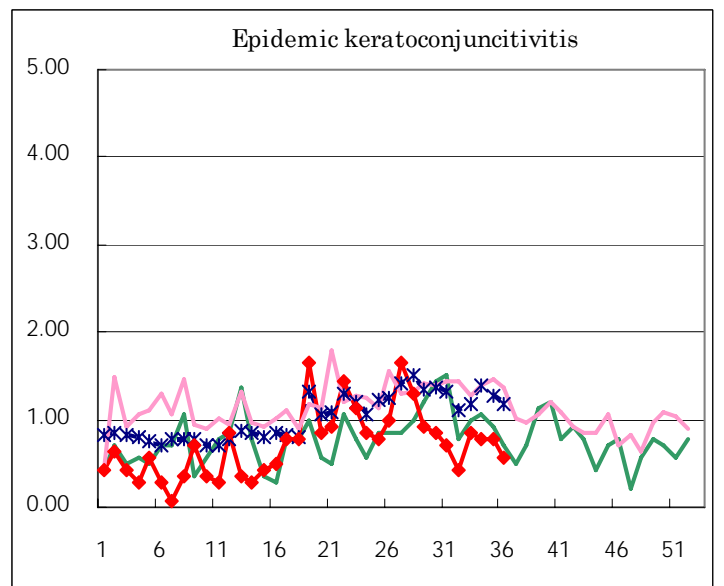
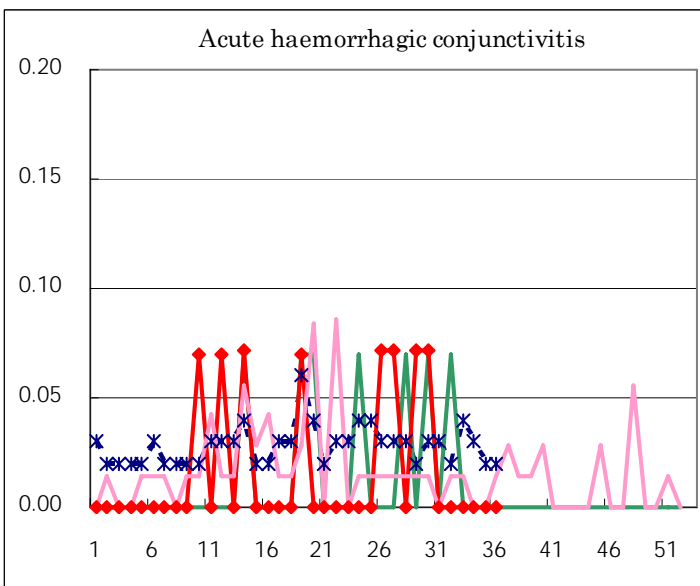
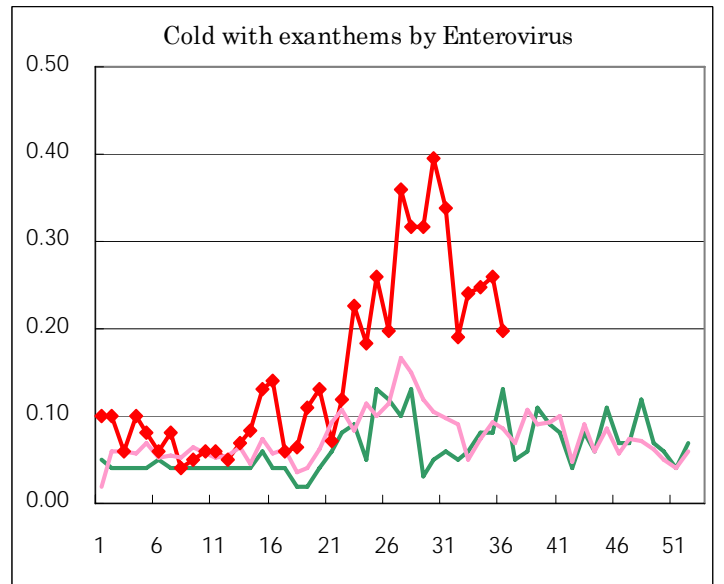
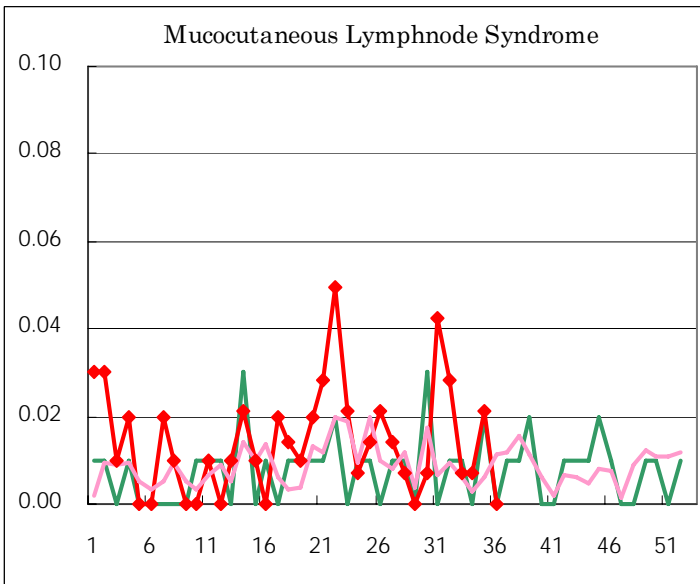
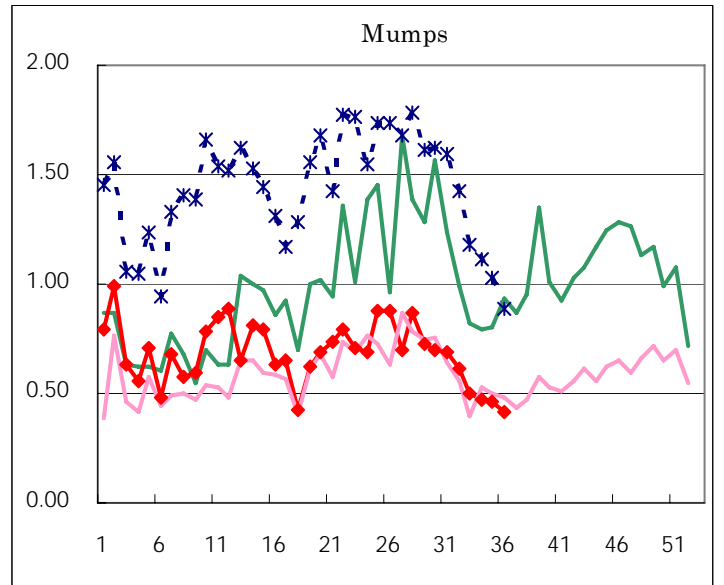
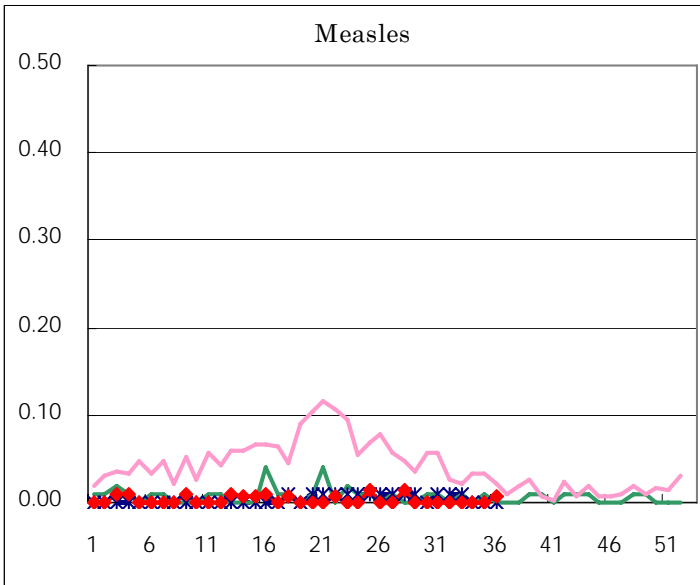
Diseases	Sex	2006				Total
		33rd	34th	35th	36th	
Respiratory syncytial virus infection	M	1	1	2	1	5
	F			1	1	2
Influenza	M					
	F					
Pharyngoconjunctival fever	M	29	39	31	46	145
	F	20	27	31	32	110
Group A streptococcal pharyngitis	M	20	43	30	29	122
	F	25	28	32	39	124
Infectious gastroenteritis	M	131	183	204	199	717
	F	110	127	179	177	593
Chickenpox	M	24	38	21	24	107
	F	23	40	15	19	97
Hand, foot, and mouth disease	M	43	40	49	77	209
	F	36	59	48	65	208
Erythema infectiosum	M	9	25	20	19	73
	F	24	27	22	27	100
Exanthem subitum	M	35	53	57	52	197
	F	25	58	48	57	188
Pertussis	M		1			1
	F					
Rubella	M					
	F					
Herpangina	M	23	29	25	36	113
	F	30	31	15	27	103
Measles	M					
	F				1	1
Mumps	M	36	41	44	36	157
	F	36	26	21	23	106
Cold with exanthems by Enterovirus	M	19	19	20	12	70
	F	15	16	17	16	64
Mucocutaneous Lymphnode Syndrome	M	1	1	2		4
	F			1		1
Acute hemorrhagic conjunctivitis	M					
	F					
Epidemic keratoconjunctivitis	M	8	7	7	6	28
	F	4	4	4	2	14
Bacterial meningitis	M					
	F			1		1
Aseptic meningitis	M	1	1	2	1	5
	F					
Mycoplasma pneumonia	M				2	2
	F	3	3	4	2	12
Chlamydial pneumonia (excluding psittacosis)	M				1	1
	F				1	1
Measles in adults	M					
	F					

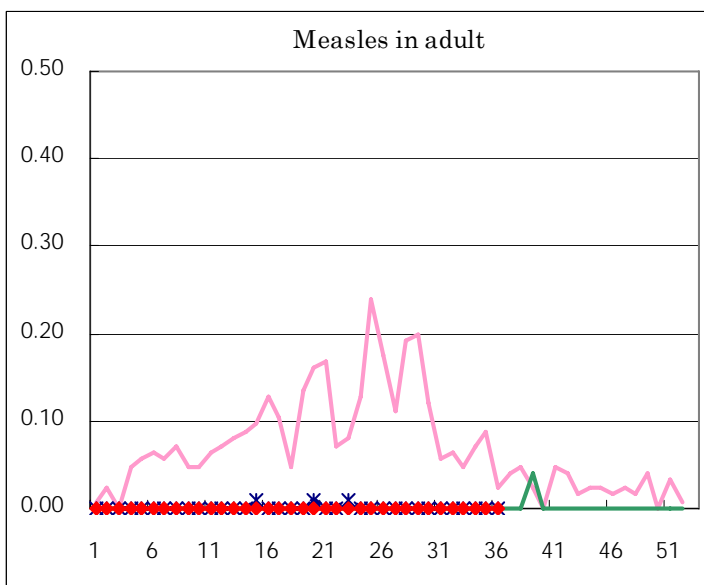
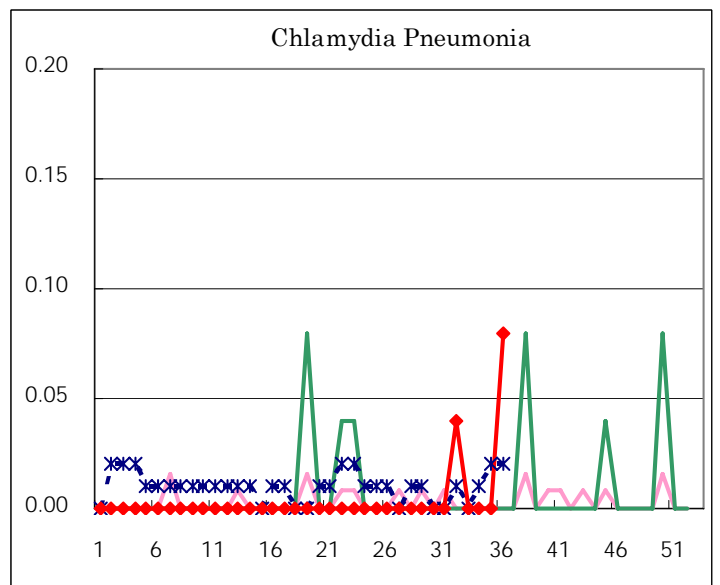
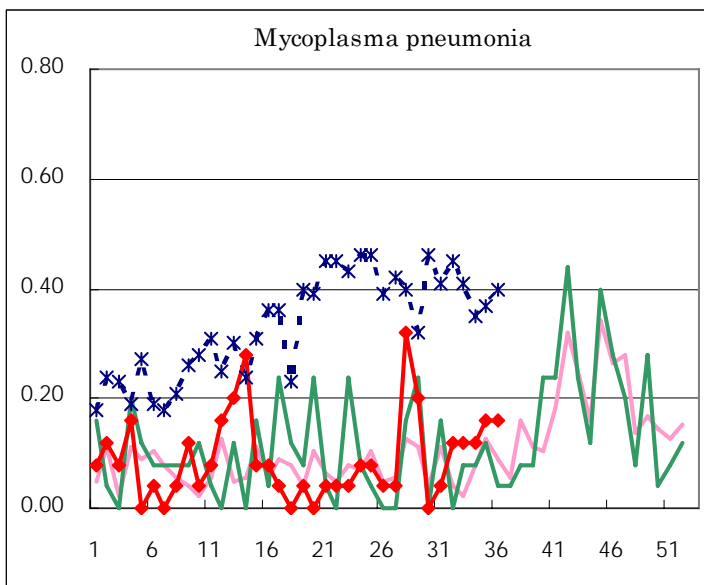
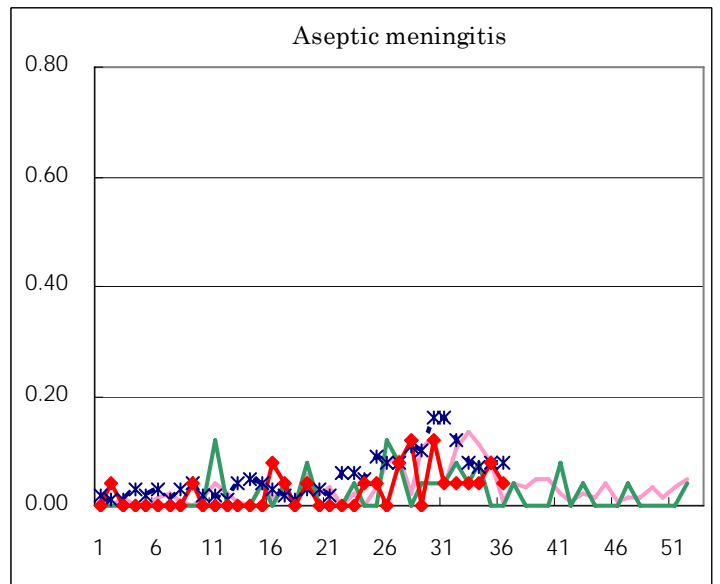
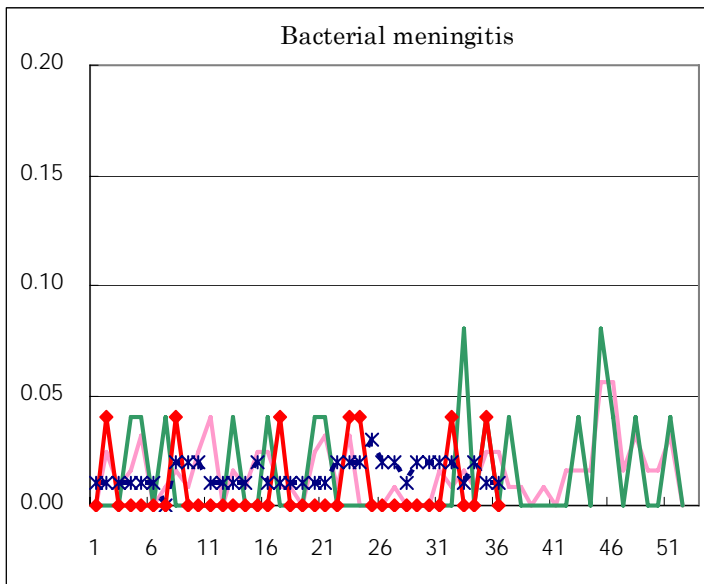
(Blank means 0.)

Disease Trend Graph (weekly reported cases per fixed-point in comparison)









Tokyo Metropolitan Government
Infectious Disease Surveillance Center