

INFECTIOUS DISEASES WEEKLY REPORT

# TOKYO IDWR

Tokyo Metropolitan Institute of Public Health

7 November 2006 / Number 43

- Number of patients with the diseases required notifying all the cases
- Number of patients with the diseases to be reported by the sentinel clinics and hospitals
- Disease trend graph (weekly reported cases per sentinel in comparison)

## Surveillance System in Tokyo, Japan

### The infectious diseases which all physicians must report

All physicians must report to health centers the incidence of the diseases which are shown at page one. Health centers electronically report the individual cases to Tokyo Metropolitan Infectious Disease Surveillance Center.

### The infectious diseases required to be reported by the sentinels

The numbers of patients who visit the sentinel clinics or hospitals during a week are reported to health centers in Tokyo. And they electronically report the numbers to Tokyo Metropolitan Infectious Disease Surveillance Center. We have about 260 sentinel clinics and hospitals in Tokyo.

1<sup>st</sup> Week is early January and 52<sup>rd</sup> Week is end of December.

Tokyo Metropolitan Infectious Disease Surveillance Center  
Tokyo Metropolitan Institute of Public Health

TEL:81-3-3363-3213 FAX:81-3-5332-7365  
e-mail:[idsc@tokyo-eiken.go.jp](mailto:idsc@tokyo-eiken.go.jp)  
URL:[idsc.tokyo-eiken.go.jp/](http://idsc.tokyo-eiken.go.jp/)

## Number of patients with the diseases which all physicians must report

Category	Diseases	Tokyo				Japan		
		40th	41st	42nd	43rd	Total	43rd	Total
I	Ebola hemorrhagic fever							
	Crimean-Congo hemorrhagic fever							
	Severe acute respiratory syndrome							
	Smallpox							
	Plague							
	Marburg disease							
	Lassa fever							
II	Acute poliomyelitis							
	Cholera	1				8		45
	Shigellosis	3	3	3	1	56	8	411
	Diphtheria							
	Typhoid fever				1	17	4	64
	Paratyphoid fever					11		22
III	Enterohemorrhagic <i>Escherichia coli</i> infection	11	7	6	2	244	64	3454
IV	Hepatitis E					3		57
	West Nile fever							
	Hepatitis A		1			26	1	294
	Echinococcosis					1		18
	Yellow fever							
	Psittacosis		1			4		19
	Relapsing fever							
	Q fever							1
	Rabies							
	High pathogenic avian influenza							
	Coccidioidomycosis			1		1		1
	Monkeypox							
	Hemorrhagic fever with renal syndrome							
	Anthrax							
	Scrub typhus (Tsutsugamushi disease)						1	182
	Dengue fever	1				14	2	47
	Nipah virus infection							
	Japanese spotted fever						2	33
	Japanese encephalitis							7
	Hantavirus pulmonary syndrome							
	B virus disease							
	Brucellosis					1	1	5
	Epidemic typhus							
Botulism							2	
Malaria		1			13	2	54	
Tularemia								
Lyme disease					2		10	
Lyssavirus infection								
Legionellosis				1	54	8	427	
Leptospirosis					4	6	20	
V	Amebiasis	8		1	2	155	5	612
	Acute viral hepatitis(excluding Hepatitis A,Hepatitis E)			1	1	30		232
	Acute encephalitis					5		135
	Cryptosporidiosis					5	1	15
	Creutzfeldt-Jakob Disease	1			2	16	2	142
	Sever invasive streptococcal infections					12		92
	Acquired immunodeficiency syndrome	8	7	6	12	365	6	1065
	Giardiasis		1		2	23	1	74
	Meningococcal meningitis					1		12
	Congenital rubella syndrome							
	Syphilis	5	2	2	3	109	10	511
	Tetanus					7	2	99
	Vancomycin-resistant <i>Staphylococcus aureus</i> infection							
	Vancomycin-resistant <i>enterococcus</i> infection	1		2	1	15		59

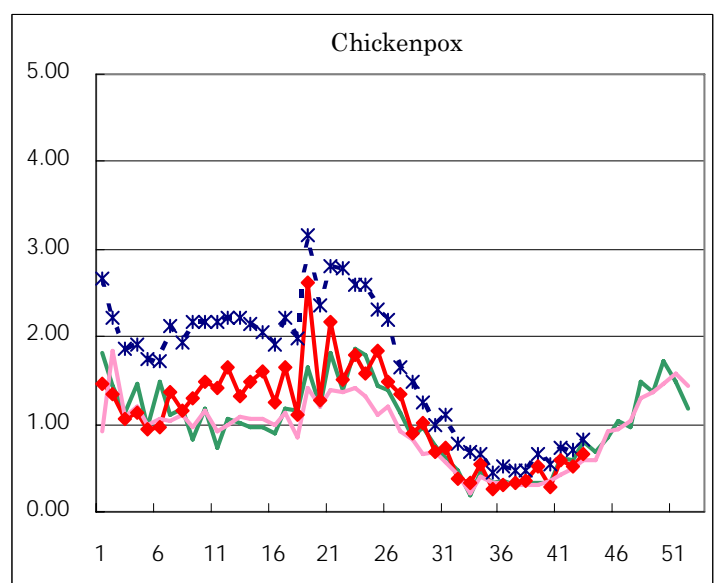
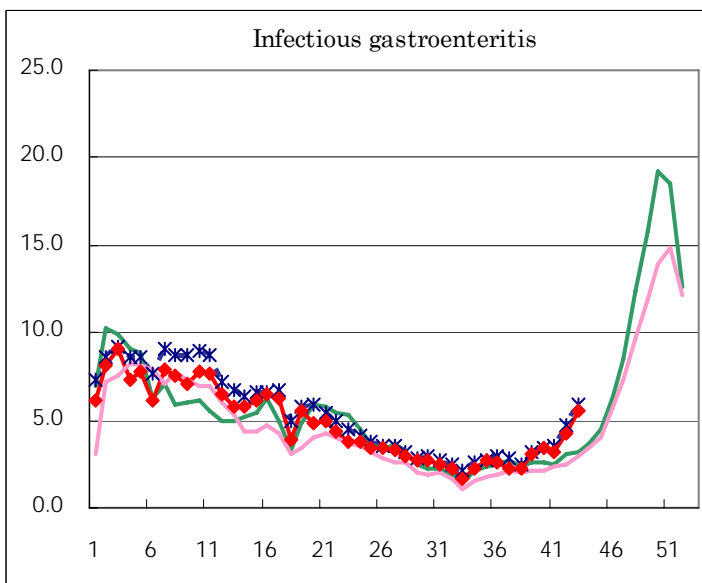
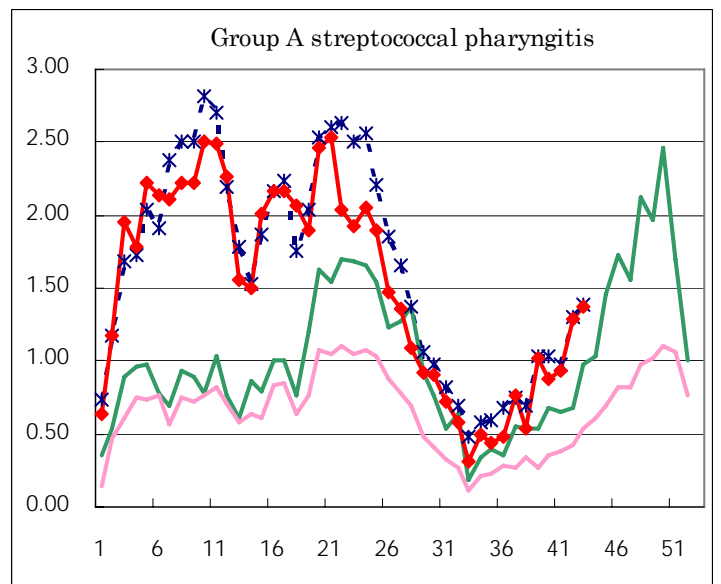
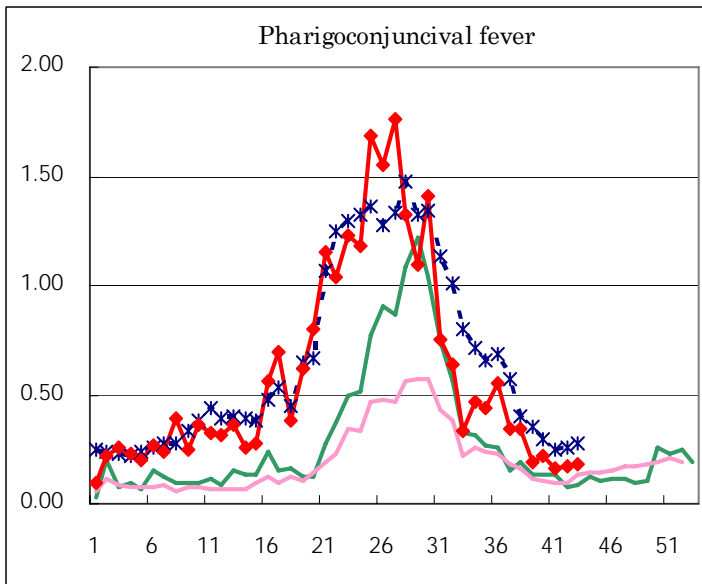
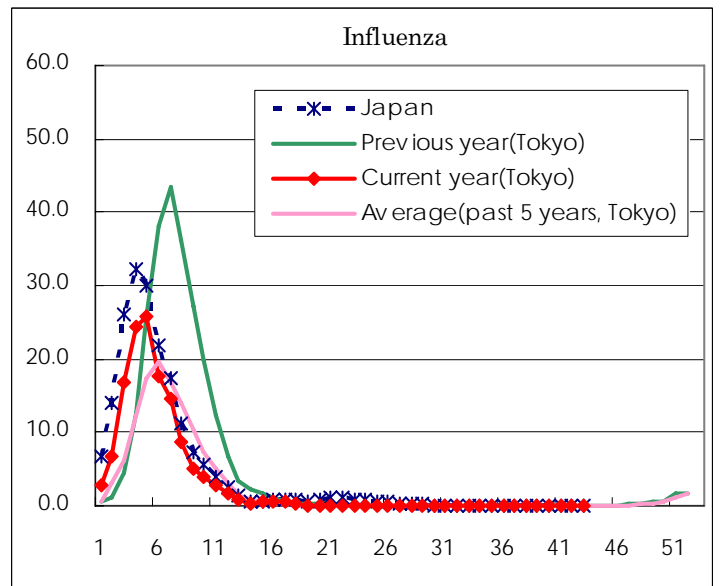
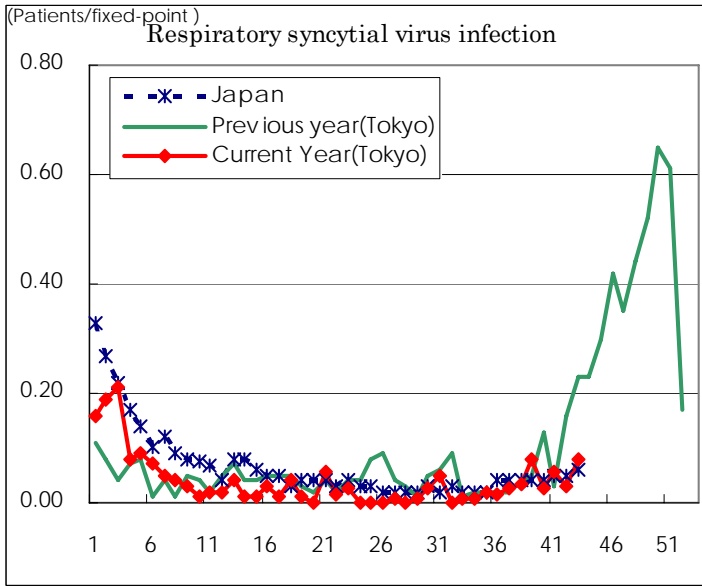
( Blank means 0. )

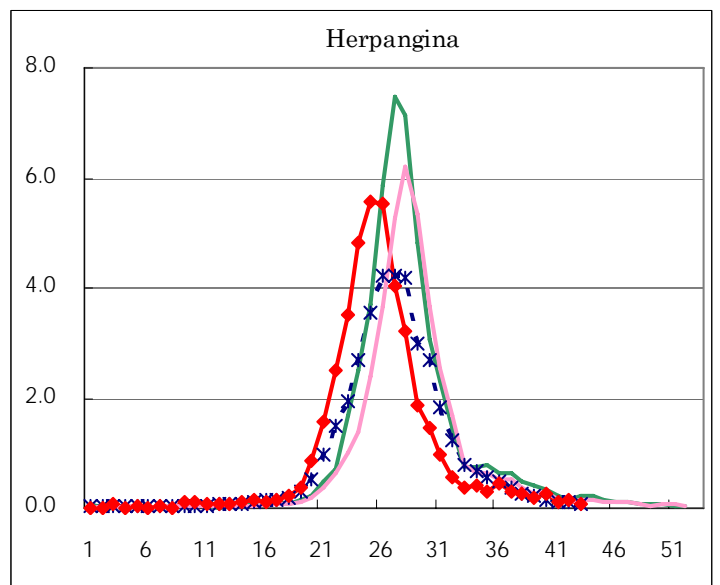
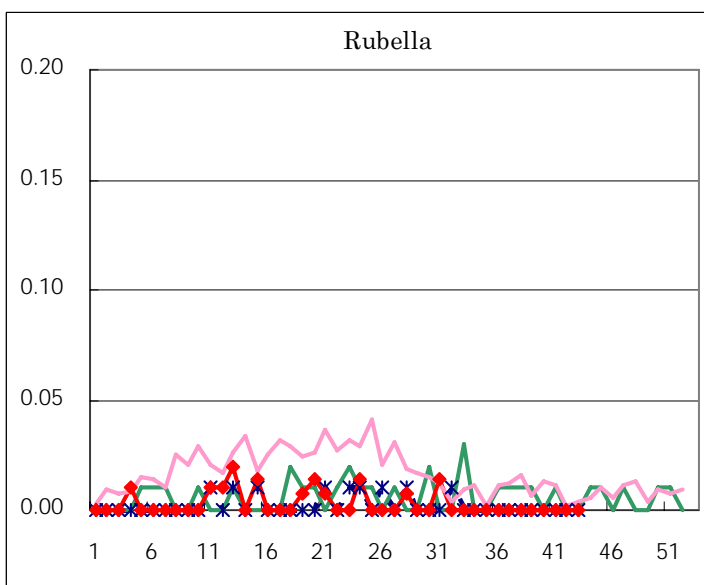
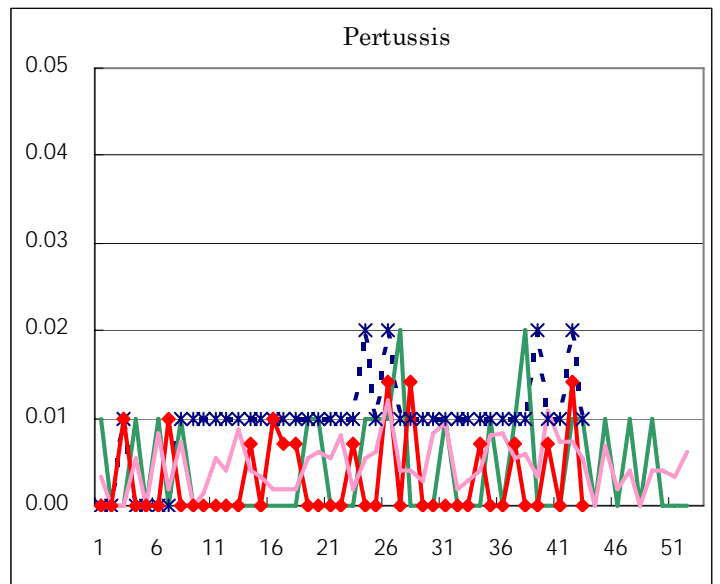
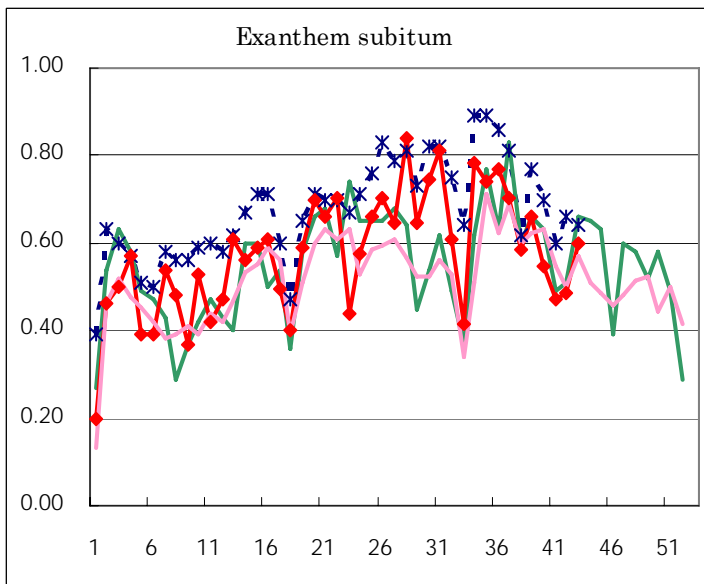
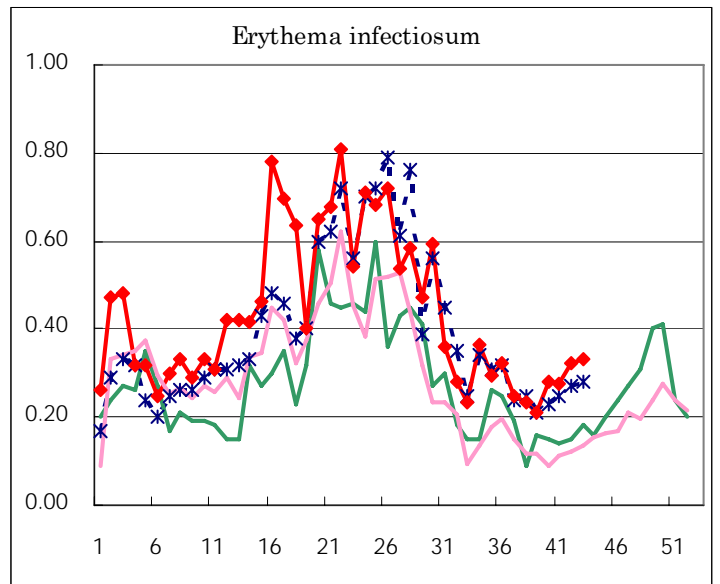
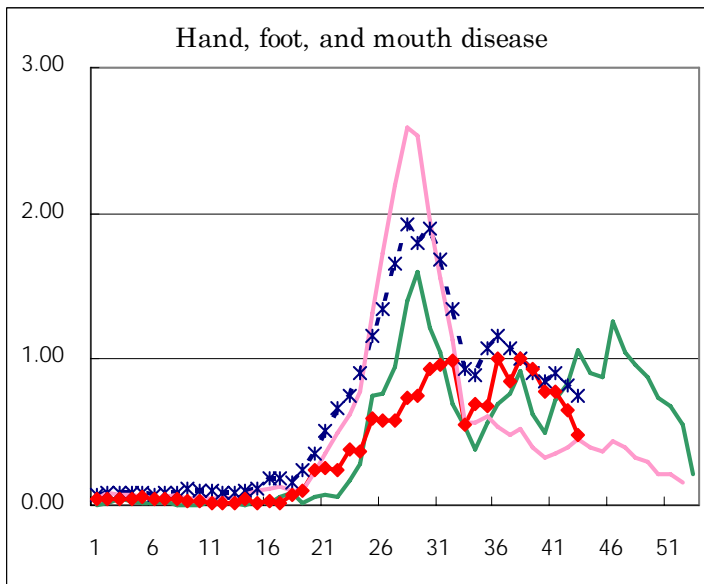
Number of patients with the diseases to be reported  
by the designated clinics and hospitals

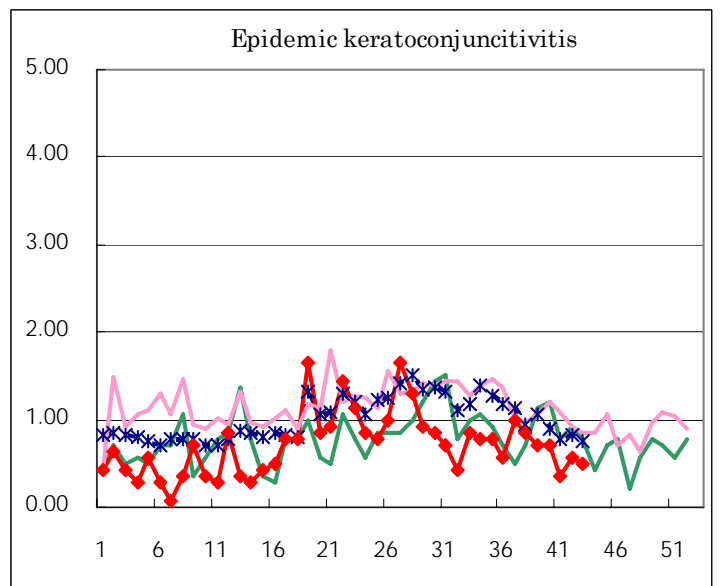
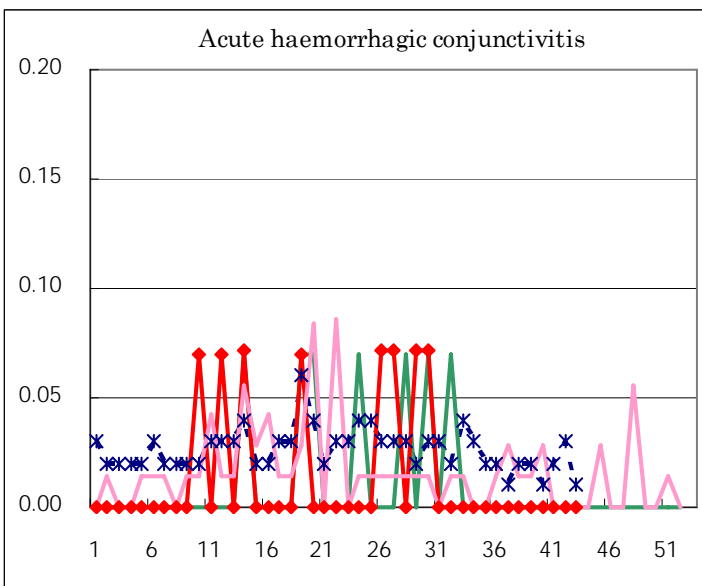
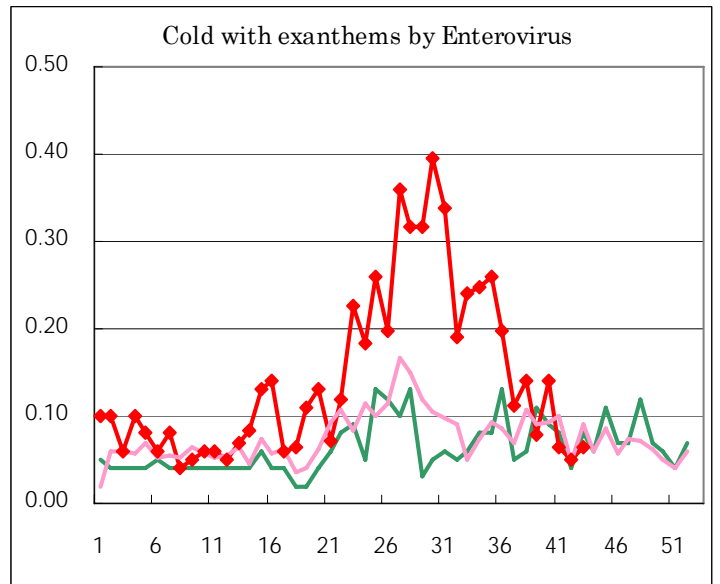
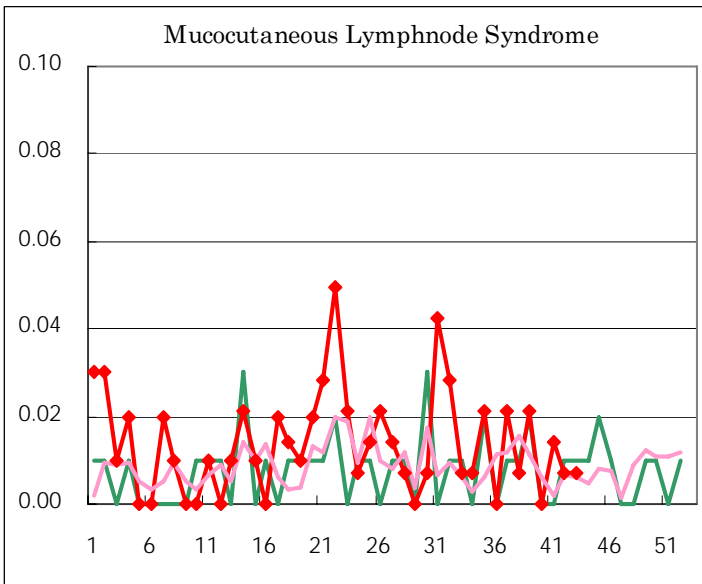
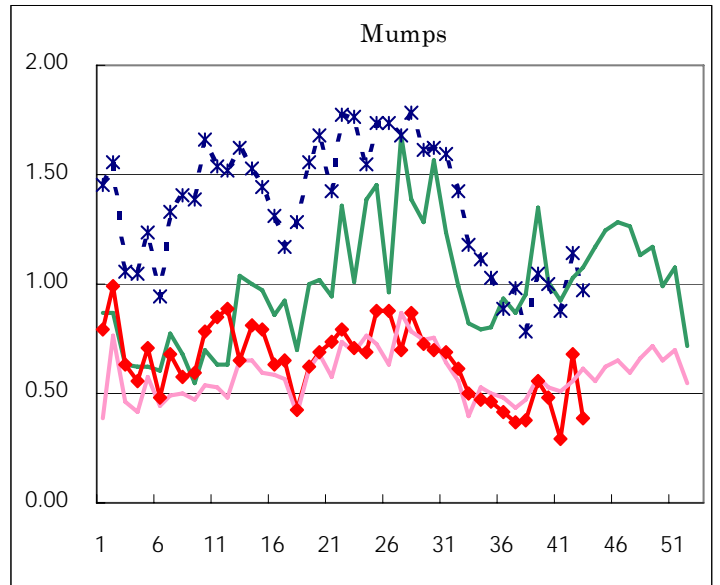
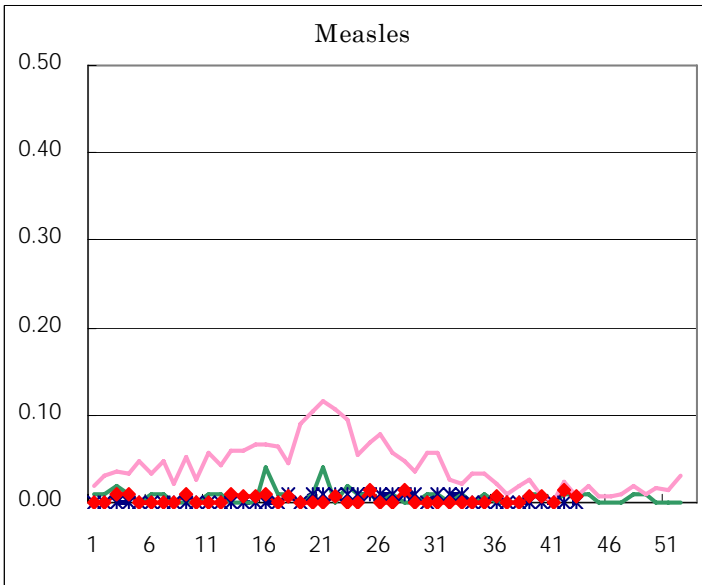
Diseases	Sex	2006				Total
		40th	41st	42nd	43rd	
Respiratory syncytial virus infection	M	3	6	2	7	18
	F	1	2	2	4	9
Influenza	M		1			1
	F					
Pharyngoconjunctival fever	M	18	12	14	14	58
	F	13	11	10	12	46
Group A streptococcal pharyngitis	M	58	75	98	106	337
	F	66	57	85	89	297
Infectious gastroenteritis	M	262	247	321	407	1,237
	F	220	209	288	381	1,098
Chickenpox	M	20	47	38	48	153
	F	20	38	35	47	140
Hand, foot, and mouth disease	M	59	68	49	34	210
	F	52	43	43	35	173
Erythema infectiosum	M	18	20	24	18	80
	F	22	19	22	29	92
Exanthem subitum	M	43	36	32	35	146
	F	35	31	37	50	153
Pertussis	M	1		1		2
	F			1		1
Rubella	M					
	F					
Herpangina	M	20	6	10	4	40
	F	16	11	12	6	45
Measles	M	1		1	1	3
	F			1		1
Mumps	M	40	20	50	23	133
	F	28	22	47	32	129
Cold with exanthems by Enterovirus	M	12	4	4	5	25
	F	8	5	3	4	20
Mucocutaneous Lymphnode Syndrome	M			1	1	2
	F		2			2
Acute hemorrhagic conjunctivitis	M					
	F					
Epidemic keratoconjunctivitis	M	5	2	4	3	14
	F	5	3	4	4	16
Bacterial meningitis	M	1	3	1		5
	F					
Aseptic meningitis	M		1		1	2
	F					
Mycoplasma pneumonia	M	3	5	7	8	23
	F	13	4	7	4	28
Chlamydial pneumonia (excluding psittacosis)	M			1		1
	F					
Measles in adults	M					
	F					

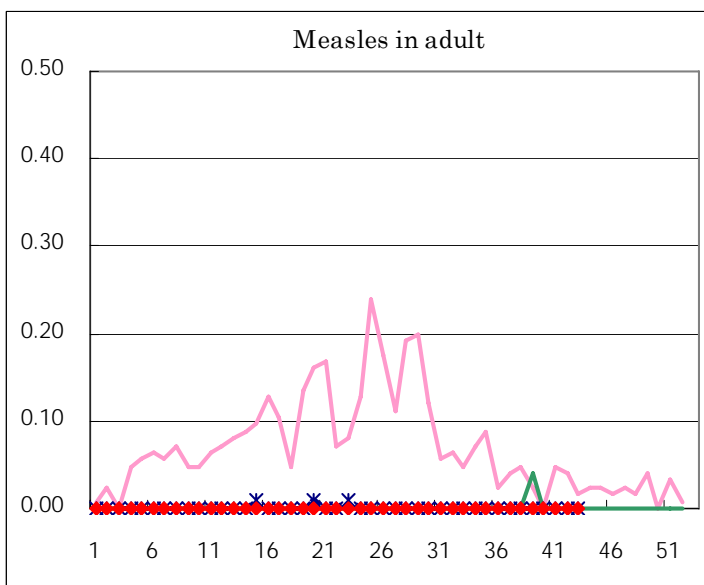
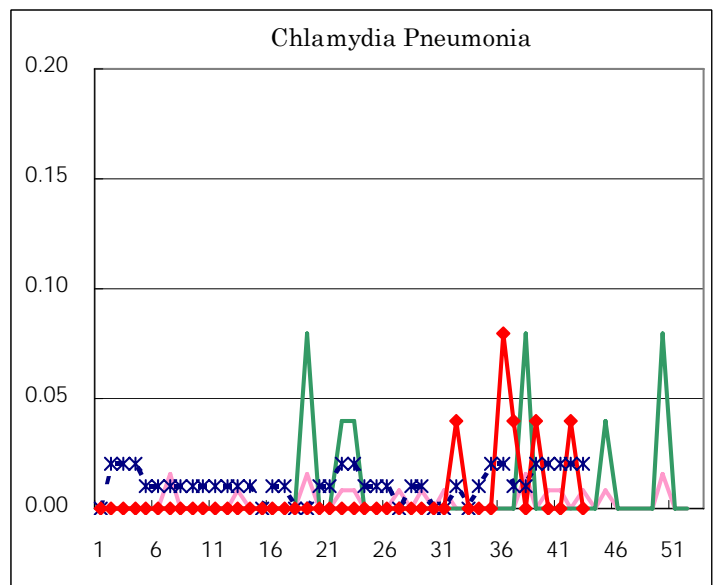
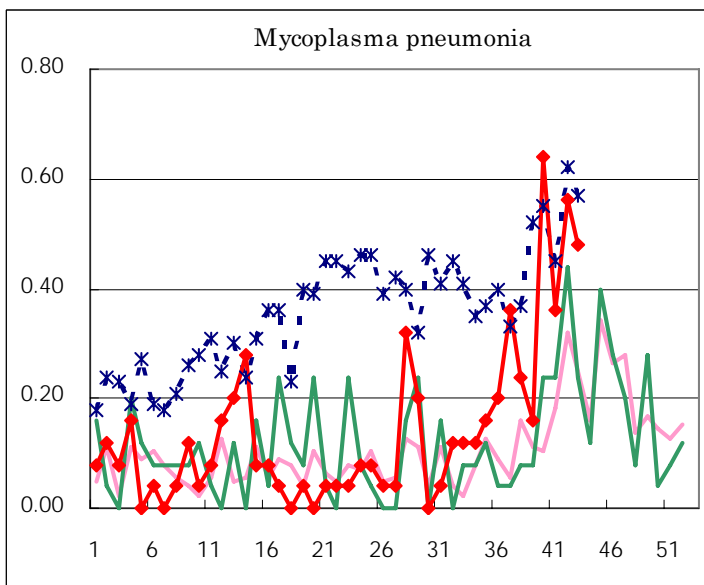
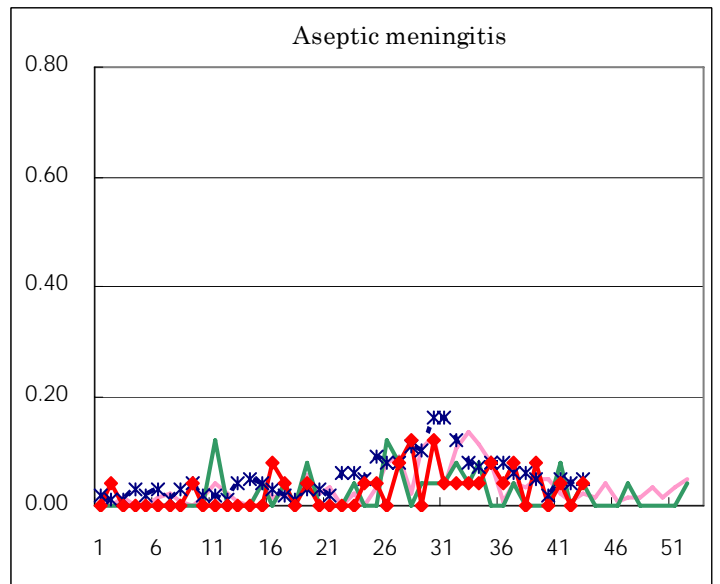
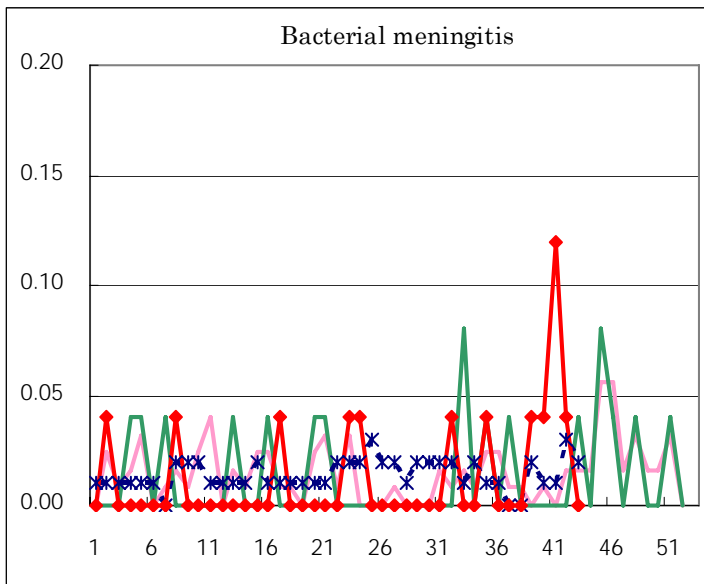
( Blank means 0. )

# Disease Trend Graph (weekly reported cases per fixed-point in comparison)









Tokyo Metropolitan Government  
**Infectious Disease Surveillance Center**