

INFECTIOUS DISEASES WEEKLY REPORT

TOKYO IDWR

Tokyo Metropolitan Institute of Public Health

21 November 2006 / Number 45

- Number of patients with the diseases required notifying all the cases
- Number of patients with the diseases to be reported by the sentinel clinics and hospitals
- Disease trend graph (weekly reported cases per sentinel in comparison)

Surveillance System in Tokyo, Japan

The infectious diseases which all physicians must report

All physicians must report to health centers the incidence of the diseases which are shown at page one. Health centers electronically report the individual cases to Tokyo Metropolitan Infectious Disease Surveillance Center.

The infectious diseases required to be reported by the sentinels

The numbers of patients who visit the sentinel clinics or hospitals during a week are reported to health centers in Tokyo. And they electronically report the numbers to Tokyo Metropolitan Infectious Disease Surveillance Center. We have about 260 sentinel clinics and hospitals in Tokyo.

1st Week is early January and 52rd Week is end of December.

Tokyo Metropolitan Infectious Disease Surveillance Center
Tokyo Metropolitan Institute of Public Health

TEL:81-3-3363-3213 FAX:81-3-5332-7365
e-mail:idsc@tokyo-eiken.go.jp
URL:idsc.tokyo-eiken.go.jp/

Number of patients with the diseases which all physicians must report

Category	Diseases	Tokyo					Japan	
		42nd	43rd	44th	45th	Total	45th	Total
I	Ebola hemorrhagic fever							
	Crimean-Congo hemorrhagic fever							
	Severe acute respiratory syndrome							
	Smallpox							
	Plague							
	Marburg disease							
	Lassa fever							
II	Acute poliomyelitis							
	Cholera					8		46
	Shigellosis	3	1	2		58	5	435
	Diphtheria							
	Typhoid fever		1			17	2	66
	Paratyphoid fever					11		22
III	Enterohemorrhagic <i>Escherichia coli</i> infection	6	2	5	3	252	35	3575
IV	Hepatitis E				1	4	1	59
	West Nile fever							
	Hepatitis A					26		300
	Echinococcosis					1		18
	Yellow fever							
	Psittacosis					4		19
	Relapsing fever							
	Q fever							1
	Rabies							
	High pathogenic avian influenza							
	Coccidioidomycosis	1				1		2
	Monkeypox							
	Hemorrhagic fever with renal syndrome							
	Anthrax							
	Scrub typhus (Tsutsugamushi disease)						15	212
	Dengue fever					14		50
	Nipah virus infection							
	Japanese spotted fever						1	41
	Japanese encephalitis							7
	Hantavirus pulmonary syndrome							
	B virus disease							
Brucellosis					1		5	
Epidemic typhus								
Botulism							2	
Malaria			1		14		54	
Tularemia								
Lyme disease					2		11	
Lyssavirus infection								
Legionellosis		1			54	4	439	
Leptospirosis					4	3	23	
V	Amebiasis	1	2	2	6	163	8	645
	Acute viral hepatitis(excluding Hepatitis A,Hepatitis E)	1	1	1		31	7	246
	Acute encephalitis				1	6		139
	Cryptosporidiosis					5		15
	Creutzfeldt-Jakob Disease		2	2		18	2	150
	Sever invasive streptococcal infections			1		13	1	96
	Acquired immunodeficiency syndrome	6	12	3	22	390	12	1135
	Giardiasis		2	1	2	26	1	79
	Meningococcal meningitis					1		12
	Congenital rubella syndrome							
	Syphilis	2	3	4	5	118	6	538
	Tetanus					7		103
	Vancomycin-resistant <i>Staphylococcus aureus</i> infection							
	Vancomycin-resistant <i>enterococcus</i> infection	2	1		2	17	2	63

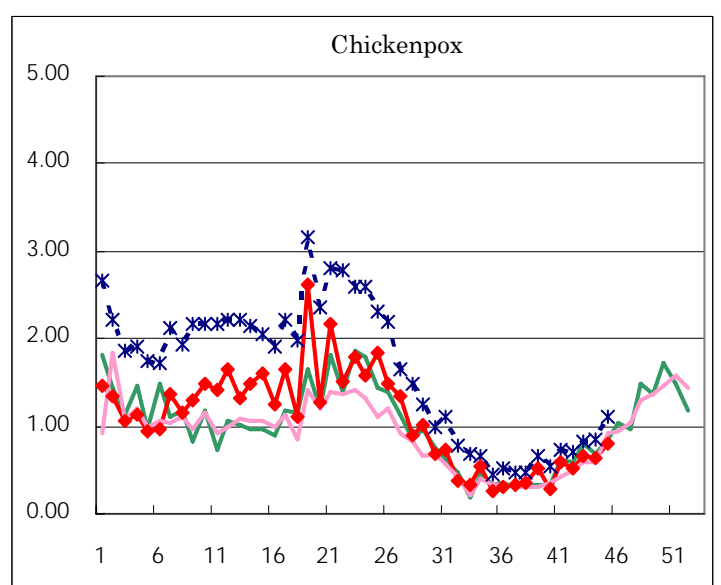
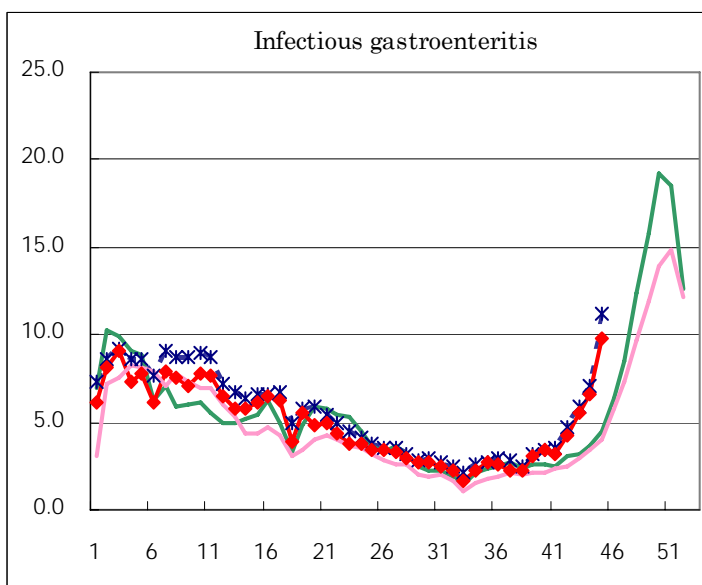
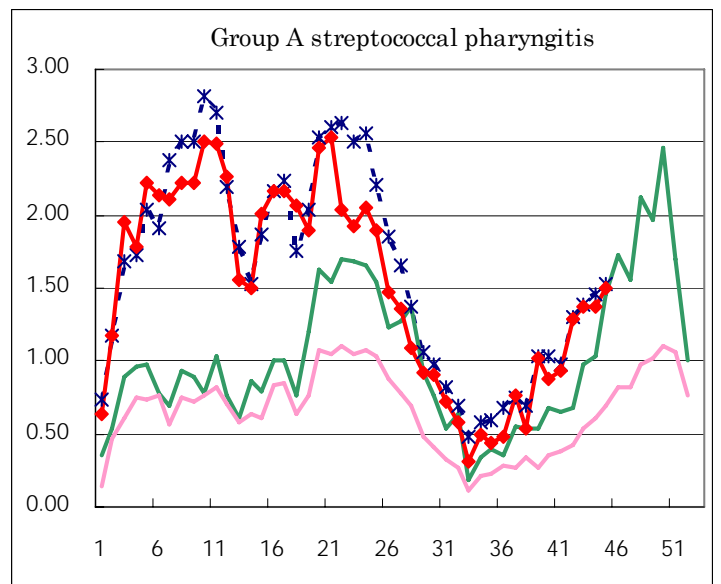
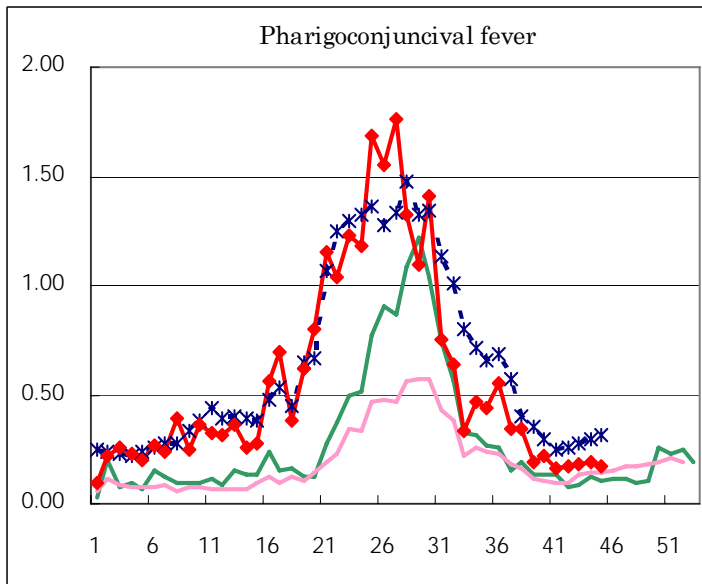
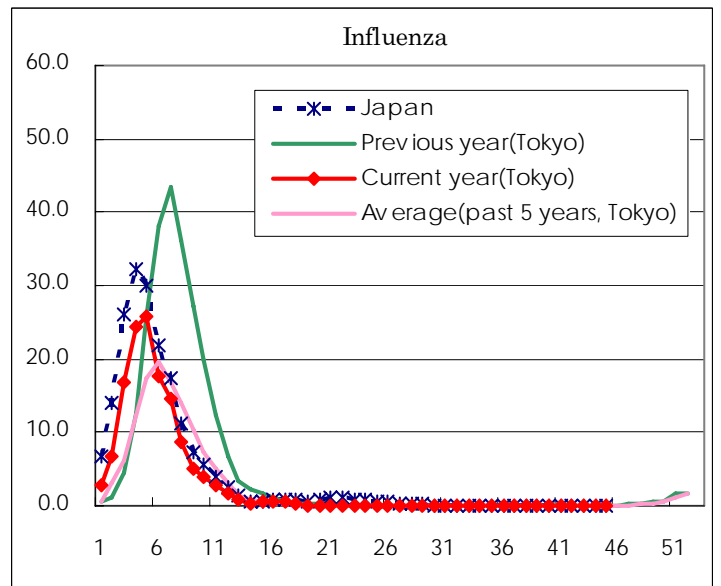
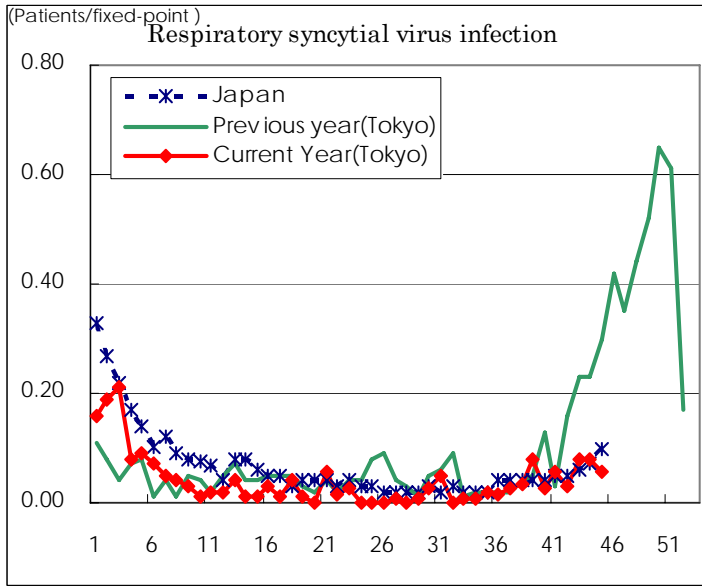
(Blank means 0.)

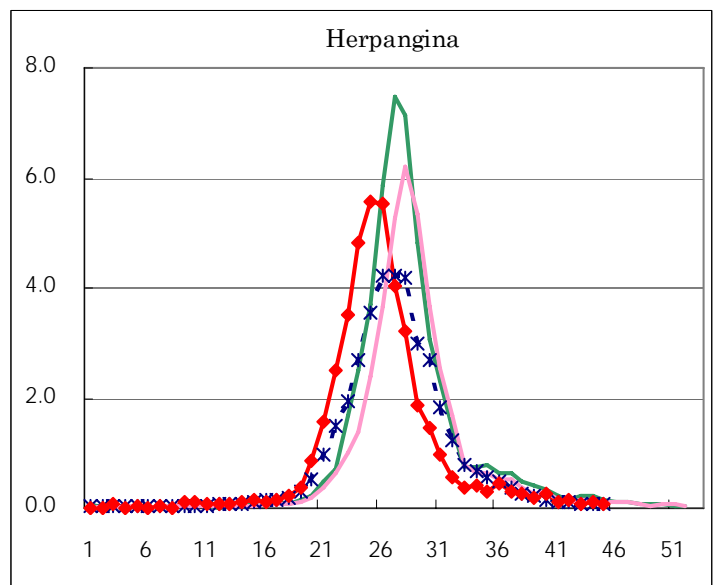
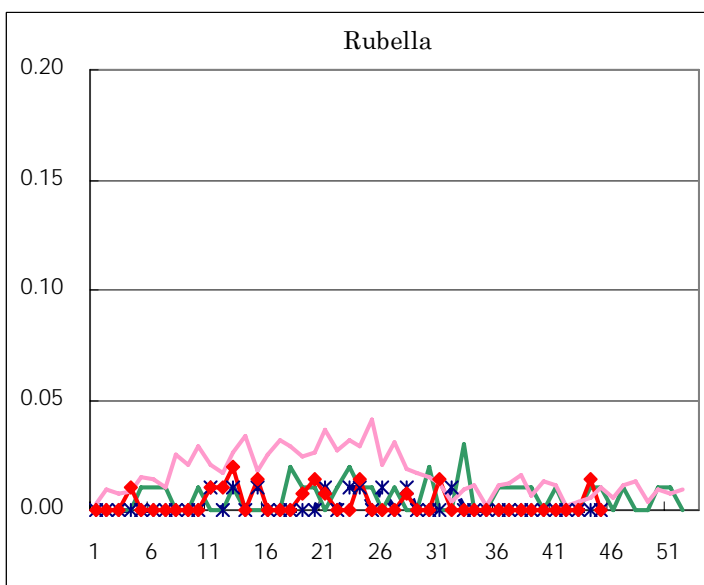
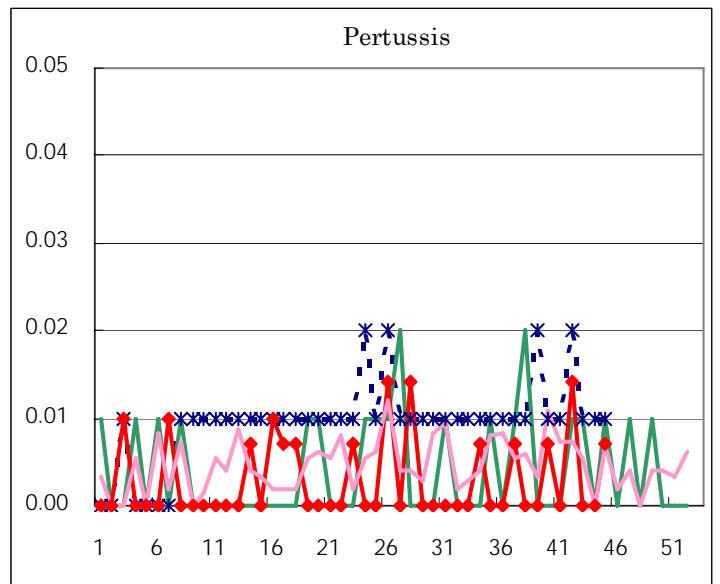
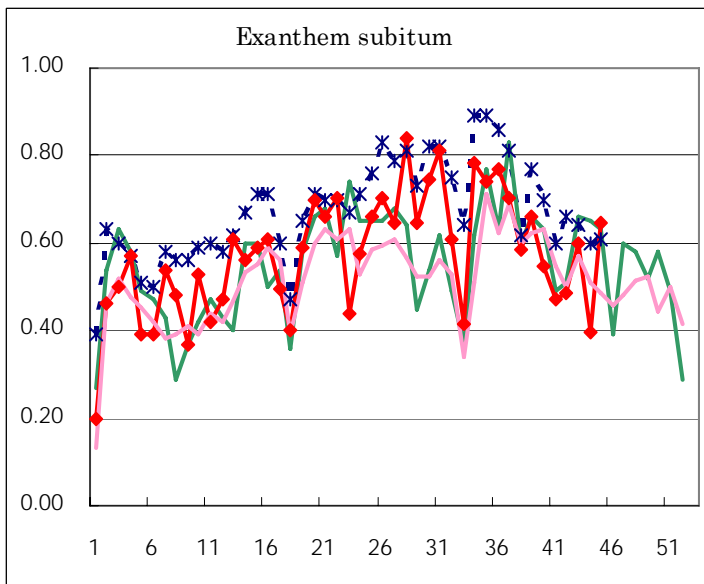
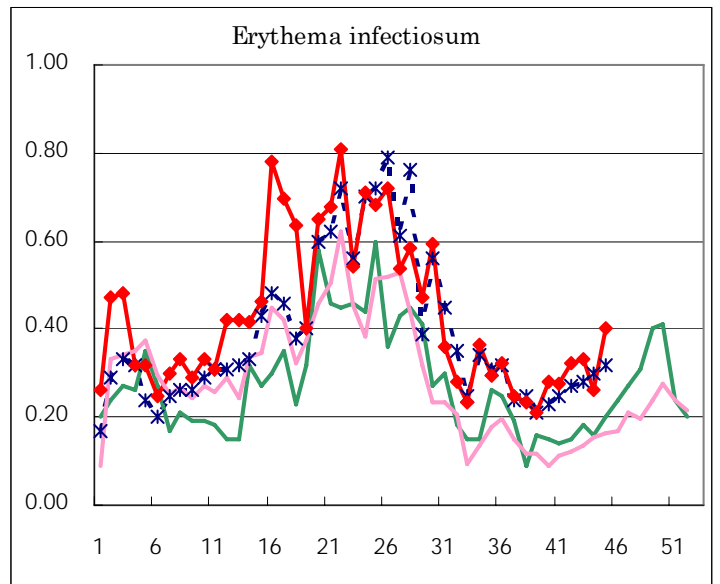
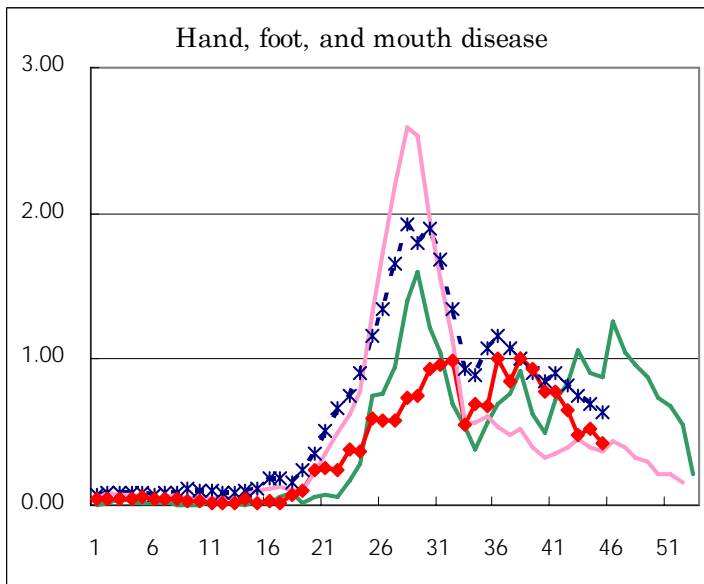
Number of patients with the diseases to be reported
by the designated clinics and hospitals

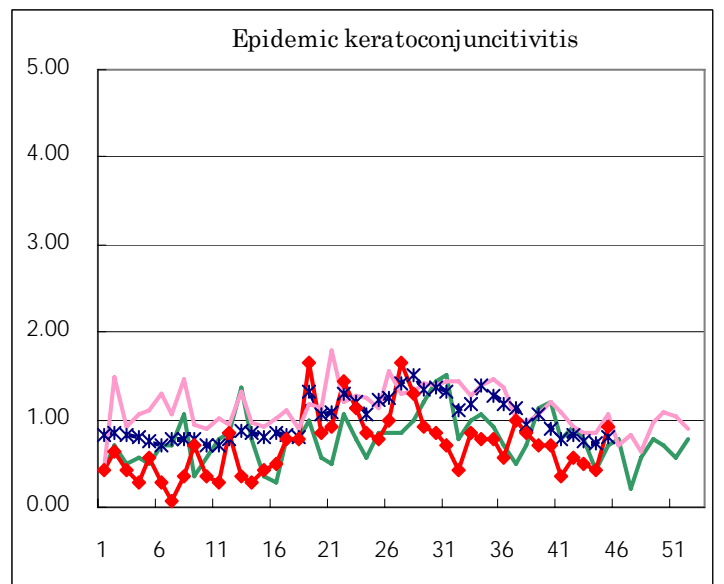
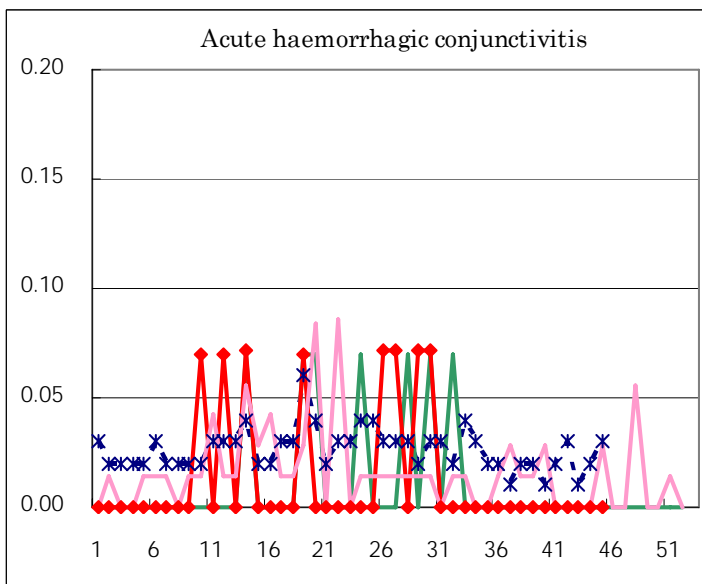
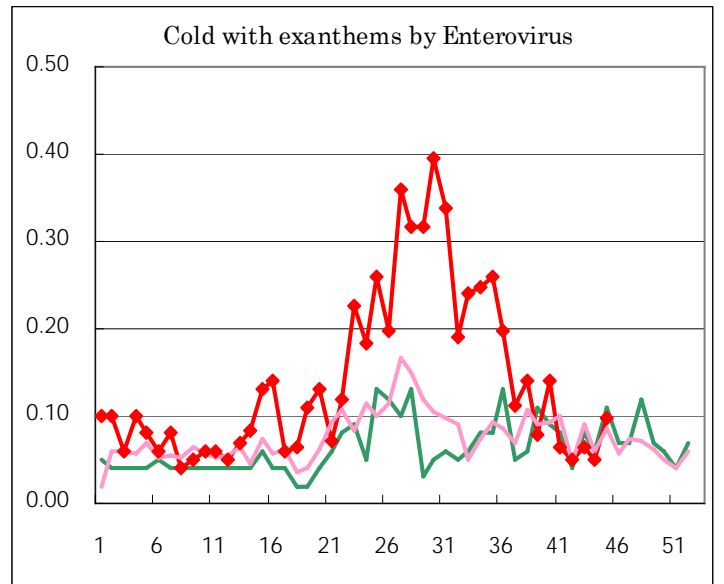
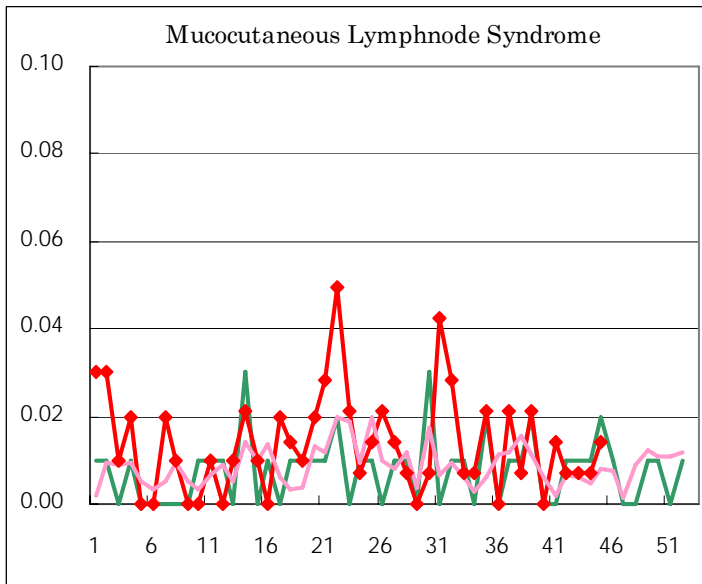
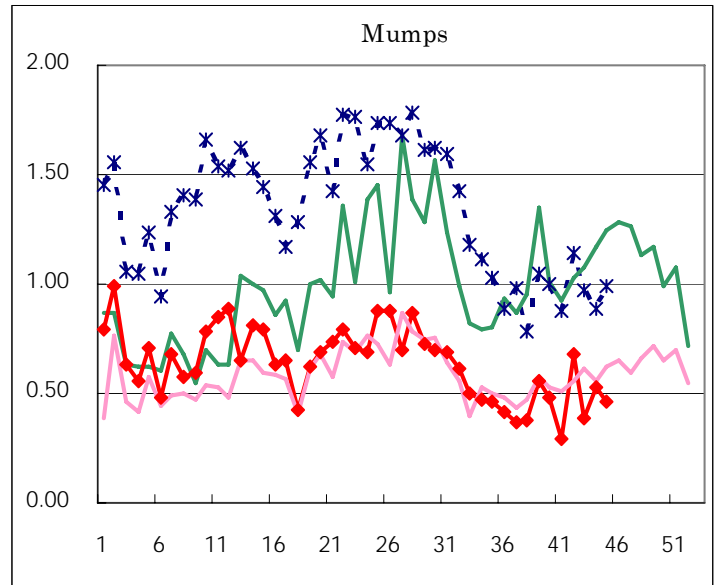
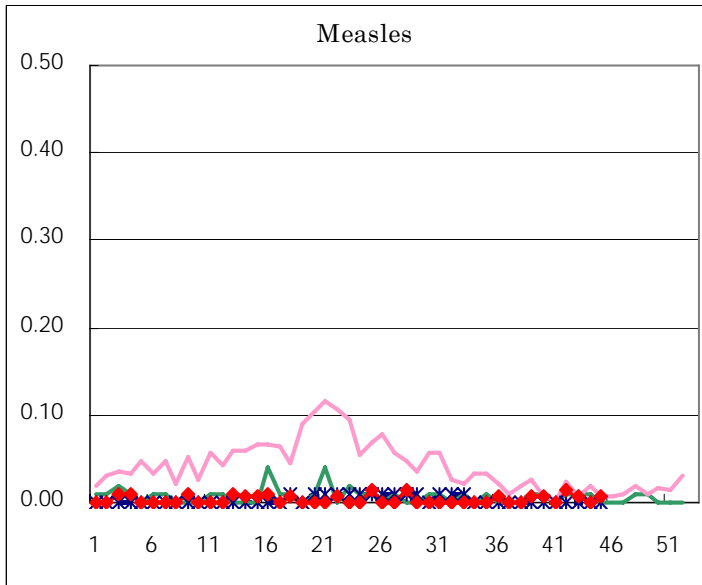
Diseases	Sex	2006				Total
		42nd	43rd	44th	45th	
Respiratory syncytial virus infection	M	2	7	5	6	20
	F	2	4	6	2	14
Influenza	M					
	F					
Pharyngoconjunctival fever	M	14	14	14	18	60
	F	10	12	13	6	41
Group A streptococcal pharyngitis	M	98	106	96	115	415
	F	85	89	98	100	372
Infectious gastroenteritis	M	321	407	487	721	1,936
	F	288	381	454	678	1,801
Chickenpox	M	38	48	52	59	197
	F	35	47	37	57	176
Hand, foot, and mouth disease	M	49	34	40	39	162
	F	43	35	35	23	136
Erythema infectiosum	M	24	18	19	22	83
	F	22	29	18	35	104
Exanthem subitum	M	32	35	27	50	144
	F	37	50	29	42	158
Pertussis	M	1			1	2
	F	1				1
Rubella	M					
	F			2		2
Herpangina	M	10	4	11	8	33
	F	12	6	6	1	25
Measles	M	1	1		1	3
	F	1				1
Mumps	M	50	23	41	36	150
	F	47	32	34	33	146
Cold with exanthems by Enterovirus	M	4	5	4	6	19
	F	3	4	3	8	18
Mucocutaneous Lymphnode Syndrome	M	1	1		1	3
	F			1	1	2
Acute hemorrhagic conjunctivitis	M					
	F					
Epidemic keratoconjunctivitis	M	4	3	2	6	15
	F	4	4	4	7	19
Bacterial meningitis	M	1				1
	F					
Aseptic meningitis	M		1		2	3
	F			1		1
Mycoplasma pneumonia	M	7	8	6	10	31
	F	7	4	9	4	24
Chlamydial pneumonia (excluding psittacosis)	M	1			1	2
	F				3	3
Measles in adults	M					
	F					

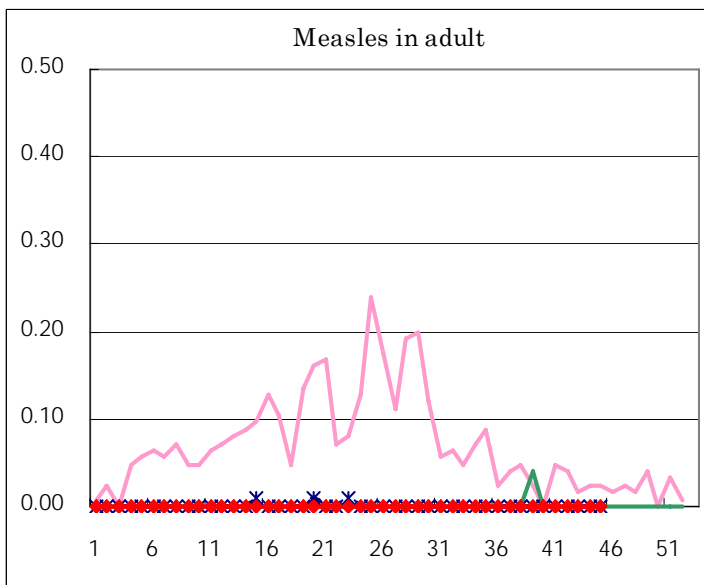
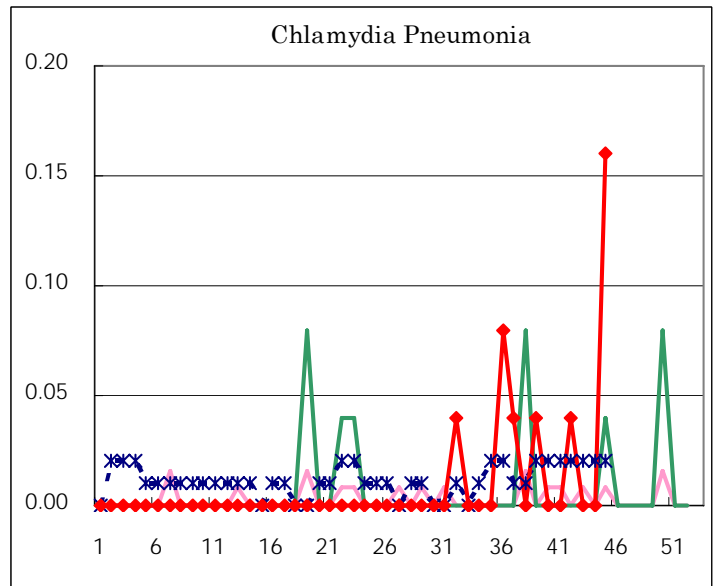
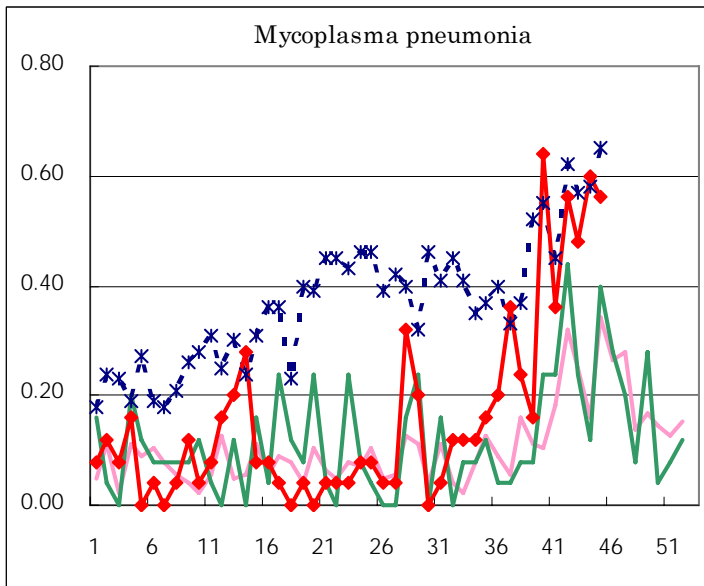
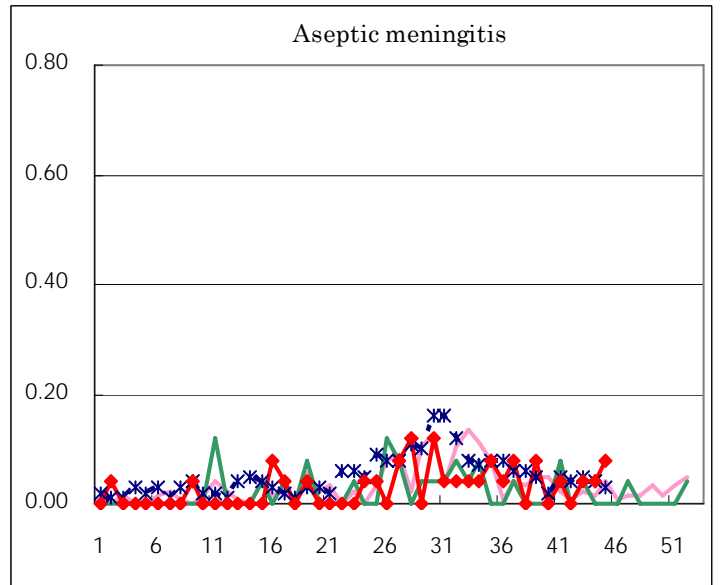
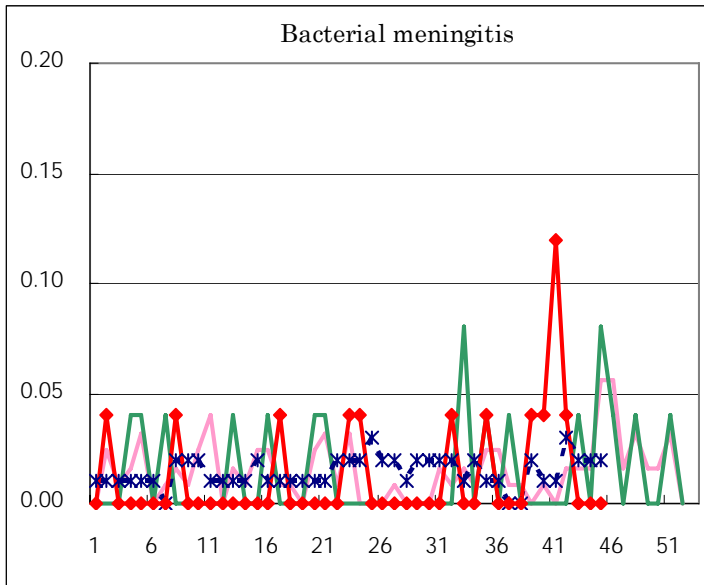
(Blank means 0.)

Disease Trend Graph (weekly reported cases per fixed-point in comparison)









Tokyo Metropolitan Government
Infectious Disease Surveillance Center