

INFECTIOUS DISEASES WEEKLY REPORT

# TOKYO IDWR

Tokyo Metropolitan Institute of Public Health

5 December 2006 / Number 47

- Number of patients with the diseases required notifying all the cases
- Number of patients with the diseases to be reported by the sentinel clinics and hospitals
- Disease trend graph (weekly reported cases per sentinel in comparison)

## Surveillance System in Tokyo, Japan

### The infectious diseases which all physicians must report

All physicians must report to health centers the incidence of the diseases which are shown at page one. Health centers electronically report the individual cases to Tokyo Metropolitan Infectious Disease Surveillance Center.

### The infectious diseases required to be reported by the sentinels

The numbers of patients who visit the sentinel clinics or hospitals during a week are reported to health centers in Tokyo. And they electronically report the numbers to Tokyo Metropolitan Infectious Disease Surveillance Center. We have about 260 sentinel clinics and hospitals in Tokyo.

1<sup>st</sup> Week is early January and 52<sup>nd</sup> Week is end of December.

Tokyo Metropolitan Infectious Disease Surveillance Center  
Tokyo Metropolitan Institute of Public Health

TEL:81-3-3363-3213 FAX:81-3-5332-7365  
e-mail:[idsc@tokyo-eiken.go.jp](mailto:idsc@tokyo-eiken.go.jp)  
URL:[idsc.tokyo-eiken.go.jp/](http://idsc.tokyo-eiken.go.jp/)

## Number of patients with the diseases which all physicians must report

Category	Diseases	Tokyo				Japan		
		44th	45th	46th	47th	Total	47th	Total
I	Ebola hemorrhagic fever							
	Crimean-Congo hemorrhagic fever							
	Severe acute respiratory syndrome							
	Smallpox							
	Plague							
	Marburg disease							
	Lassa fever							
II	Acute poliomyelitis							
	Cholera					8		46
	Shigellosis	2		1		59	2	442
	Diphtheria							
	Typhoid fever					17	1	67
	Paratyphoid fever					11		22
III	Enterohemorrhagic <i>Escherichia coli</i> infection	5	3	5	3	260	38	3680
IV	Hepatitis E		1			4		61
	West Nile fever							
	Hepatitis A					26	1	305
	Echinococcosis					1		20
	Yellow fever							
	Psittacosis					4		21
	Relapsing fever							
	Q fever							2
	Rabies						1	2
	High pathogenic avian influenza							
	Coccidioidomycosis					1		2
	Monkeypox							
	Hemorrhagic fever with renal syndrome							
	Anthrax							
	Scrub typhus (Tsumugamushi disease)						18	268
	Dengue fever			2		16		53
	Nipah virus infection							
	Japanese spotted fever						1	44
	Japanese encephalitis							7
	Hantavirus pulmonary syndrome							
	B virus disease							
Brucellosis					1		5	
Epidemic typhus								
Botulism							2	
Malaria	1				14	1	57	
Tularemia								
Lyme disease					2	1	12	
Lyssavirus infection								
Legionellosis				1	55	11	459	
Leptospirosis					4		23	
V	Amebiasis	2	6	3	3	169	7	673
	Acute viral hepatitis(excluding Hepatitis A,Hepatitis E)	1			2	33	2	254
	Acute encephalitis		1			6		143
	Cryptosporidiosis					5		15
	Creutzfeldt-Jakob Disease	2		1		19	2	157
	Sever invasive streptococcal infections	1				13	1	98
	Acquired immunodeficiency syndrome	3	22	15	8	413	12	1180
	Giardiasis	1	2		1	27		80
	Meningococcal meningitis					1		13
	Congenital rubella syndrome							
	Syphilis	3	5	4	1	122	4	560
	Tetanus					7		108
	Vancomycin-resistant <i>Staphylococcus aureus</i> infection							
	Vancomycin-resistant <i>enterococcus</i> infection		2		1	18	1	67

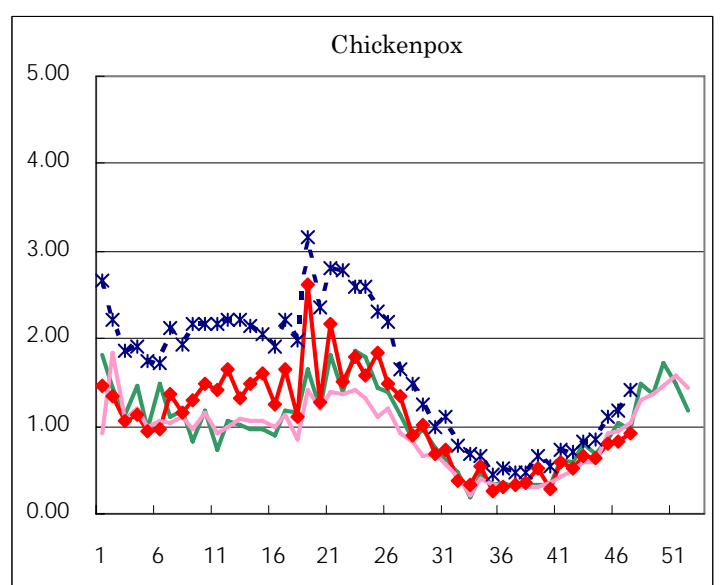
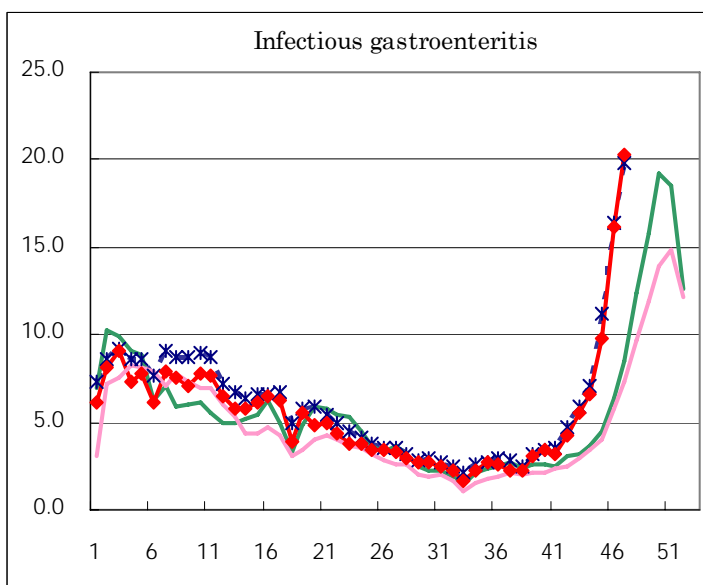
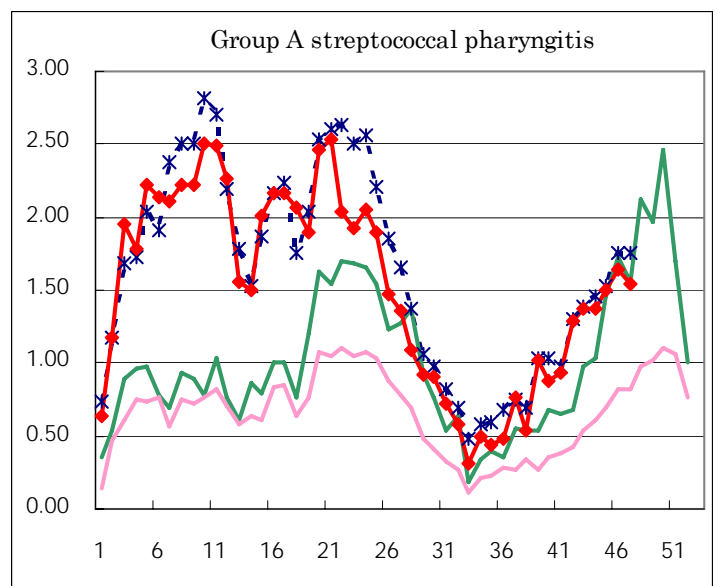
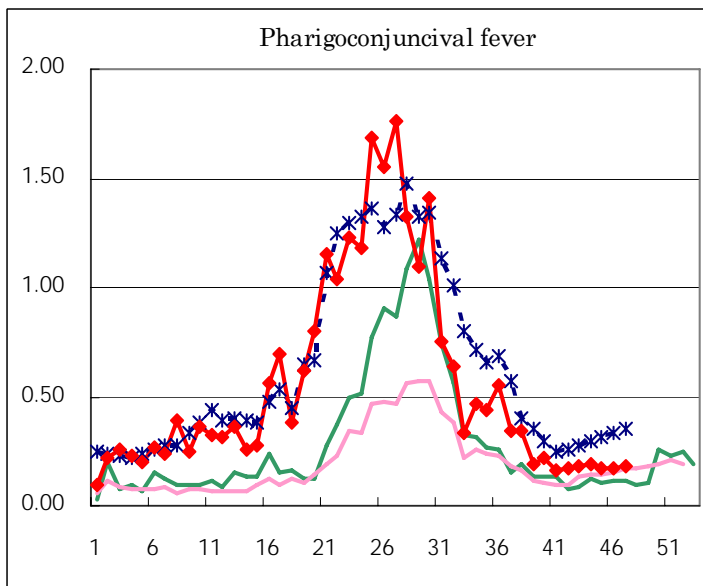
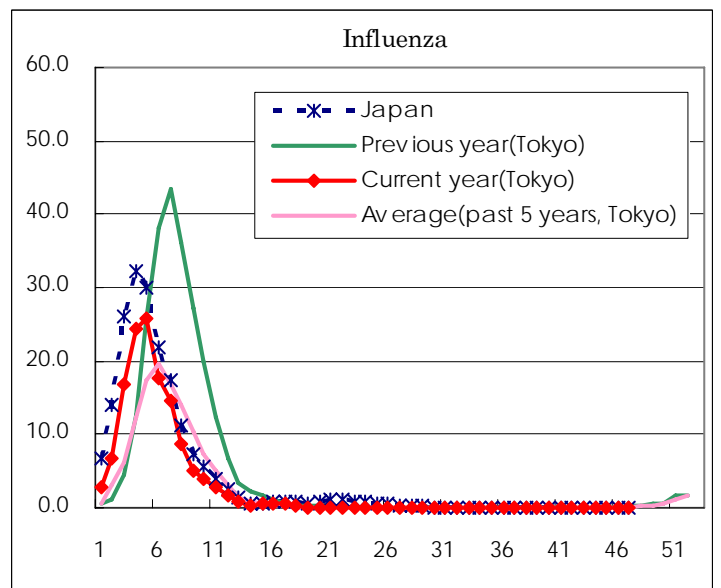
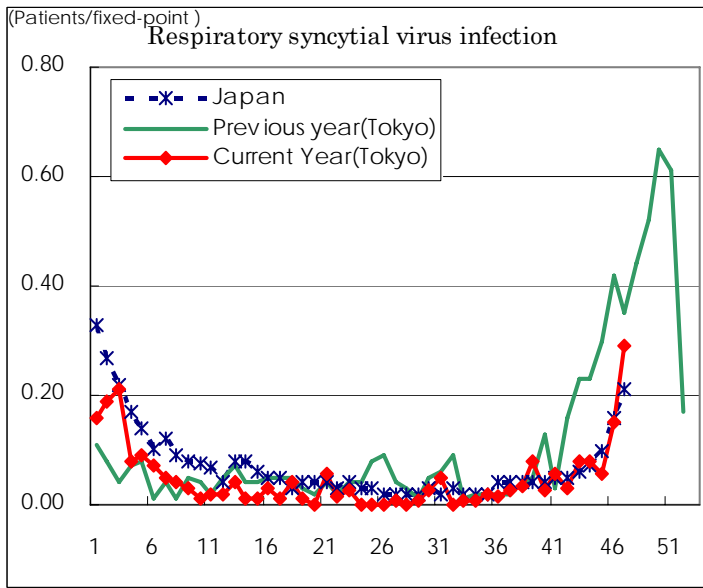
( Blank means 0. )

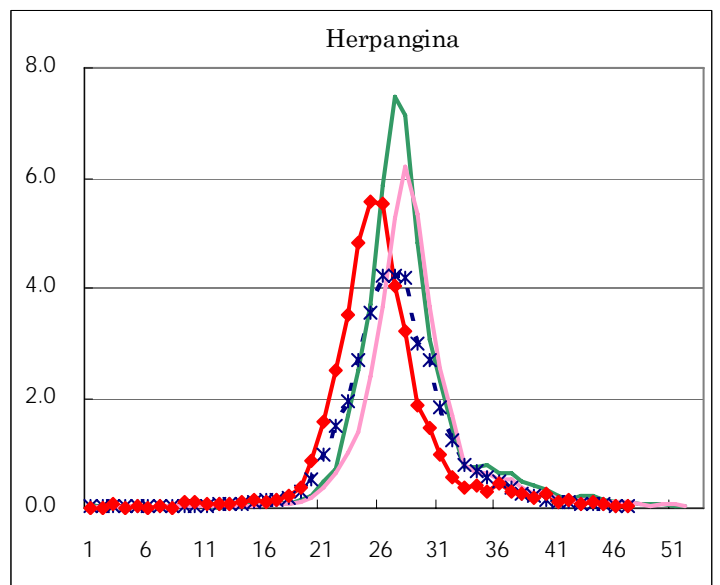
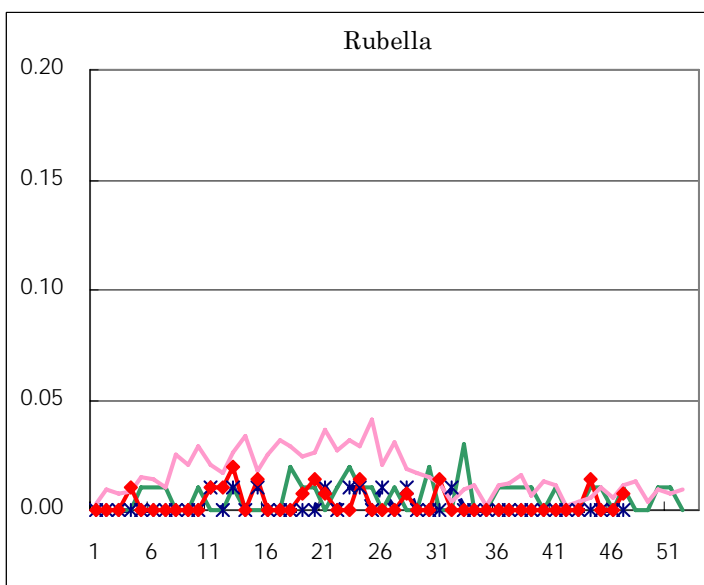
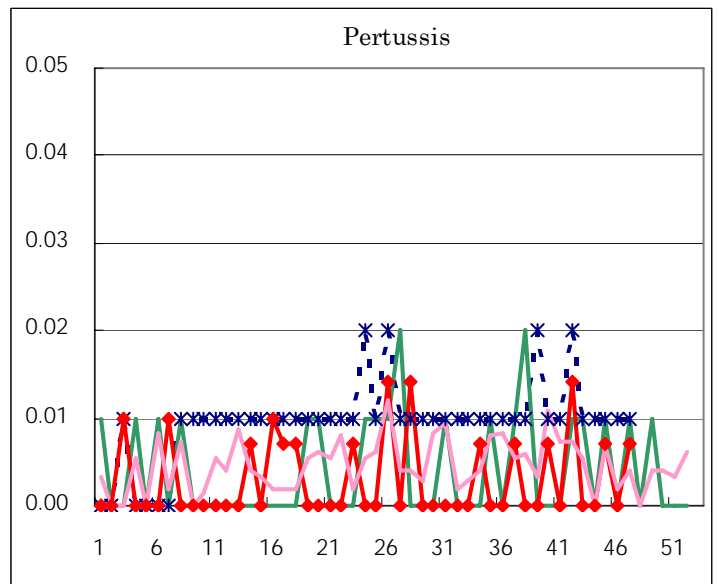
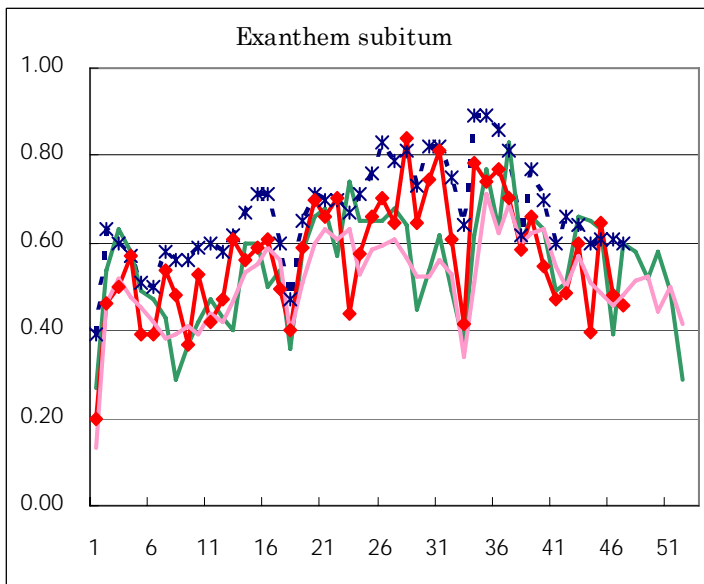
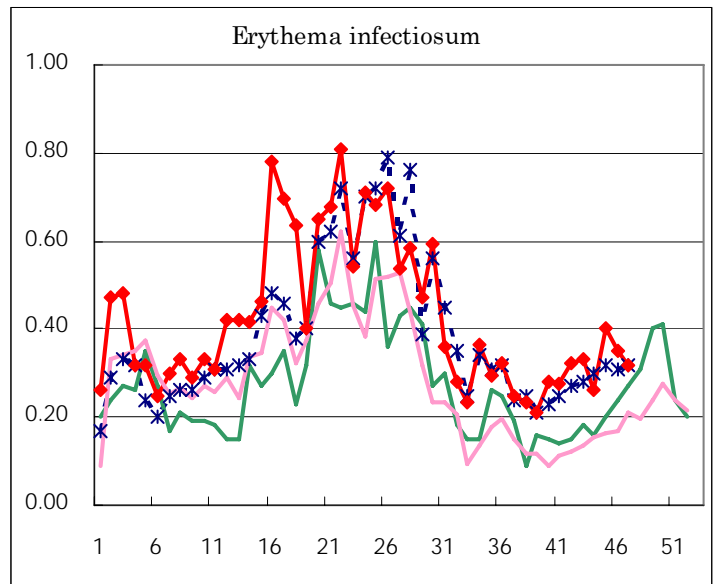
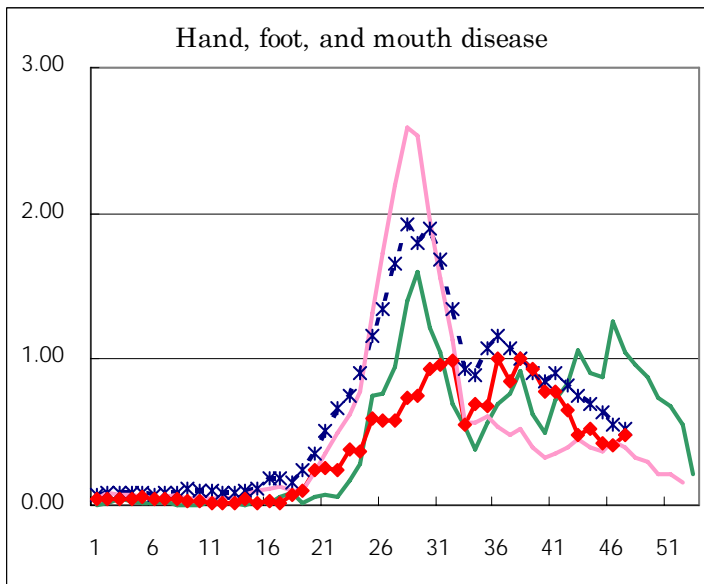
Number of patients with the diseases to be reported  
by the designated clinics and hospitals

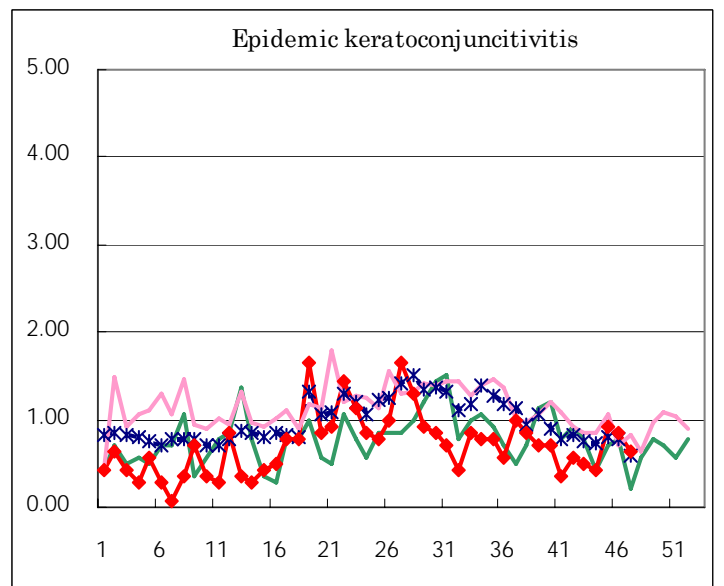
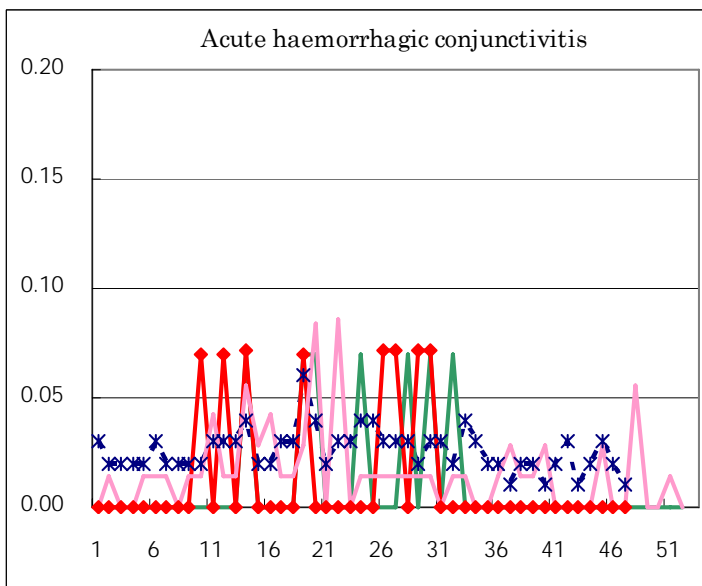
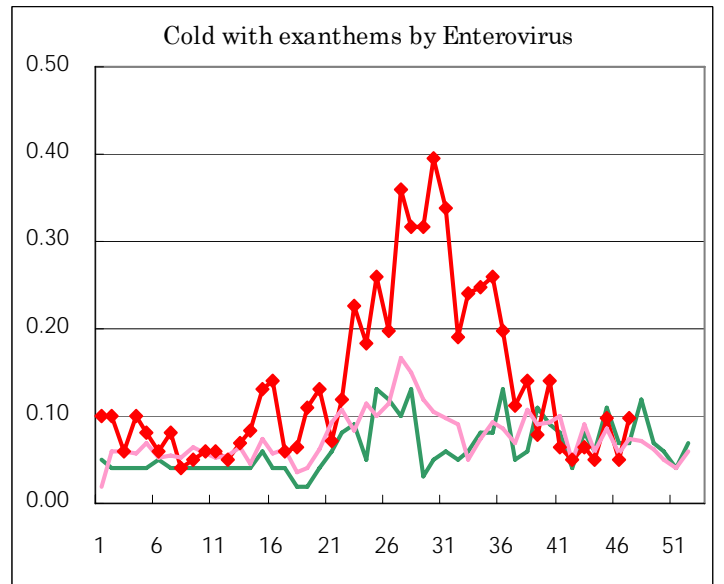
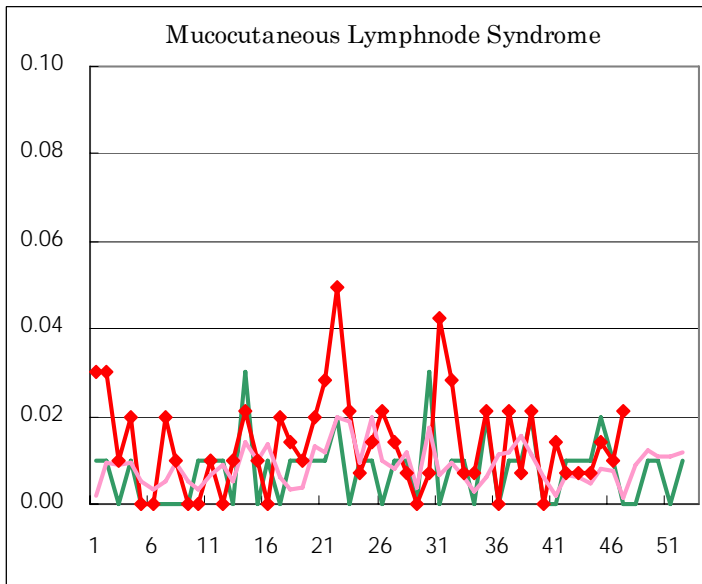
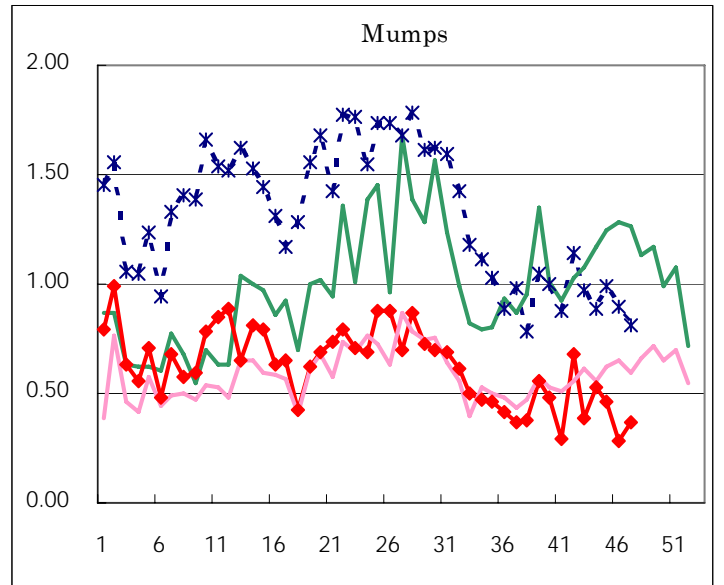
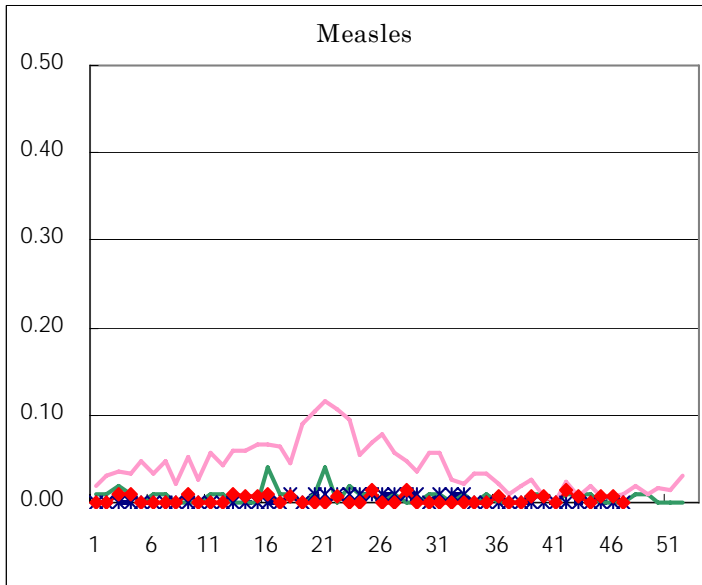
Diseases	Sex	2006				Total
		44th	45th	46th	47th	
Respiratory syncytial virus infection	M	5	6	13	23	47
	F	6	2	9	18	35
Influenza	M		1	1	1	3
	F			2	2	4
Pharyngoconjunctival fever	M	14	18	16	20	68
	F	13	6	8	6	33
Group A streptococcal pharyngitis	M	96	115	127	109	447
	F	98	100	107	110	415
Infectious gastroenteritis	M	487	721	1,148	1,464	3,820
	F	454	678	1,149	1,410	3,691
Chickenpox	M	52	59	63	62	236
	F	37	57	55	69	218
Hand, foot, and mouth disease	M	40	39	34	40	153
	F	35	23	24	28	110
Erythema infectiosum	M	19	22	21	21	83
	F	18	35	29	24	106
Exanthem subitum	M	27	50	44	37	158
	F	29	42	24	28	123
Pertussis	M		1			1
	F				1	1
Rubella	M				1	1
	F	2				2
Herpangina	M	11	8	3	4	26
	F	6	1	2	1	10
Measles	M		1	1		2
	F					
Mumps	M	41	36	20	24	121
	F	34	33	20	28	115
Cold with exanthems by Enterovirus	M	4	6	4	7	21
	F	3	8	3	7	21
Mucocutaneous Lymphnode Syndrome	M		1		1	2
	F	1	1	1	2	5
Acute hemorrhagic conjunctivitis	M					
	F					
Epidemic keratoconjunctivitis	M	2	6	5	4	17
	F	4	7	7	5	23
Bacterial meningitis	M					
	F					
Aseptic meningitis	M		2	1		3
	F	1			1	2
Mycoplasma pneumonia	M	6	10	5	3	24
	F	9	4	2		15
Chlamydial pneumonia (excluding psittacosis)	M		1			1
	F		3			3
Measles in adults	M				1	1
	F					

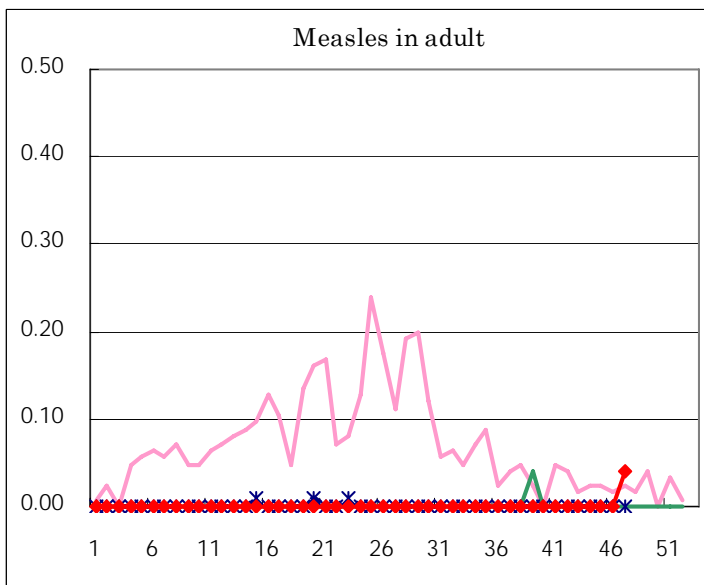
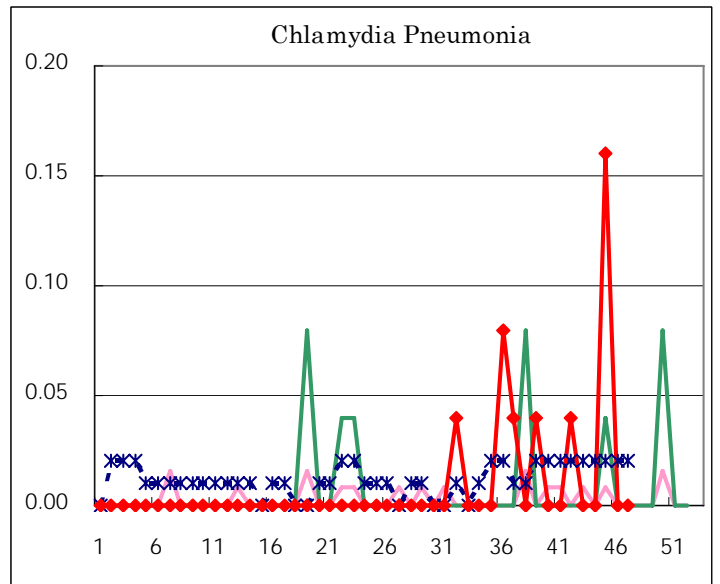
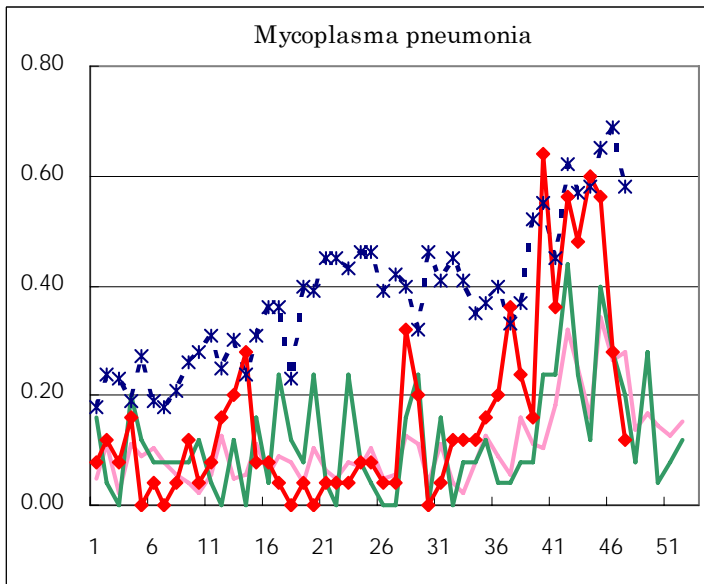
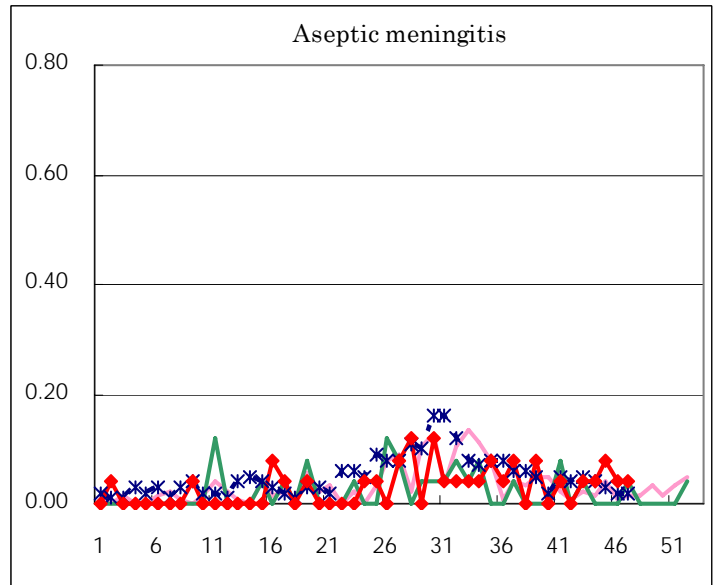
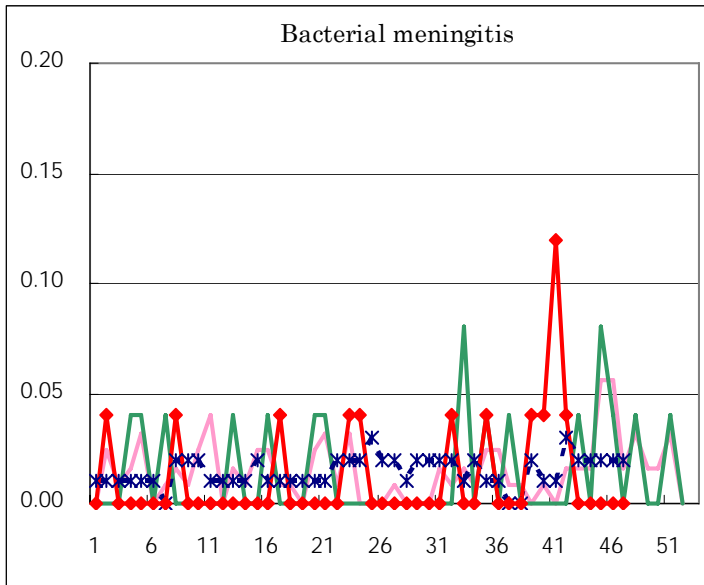
( Blank means 0. )

# Disease Trend Graph (weekly reported cases per fixed-point in comparison)









Tokyo Metropolitan Government  
**Infectious Disease Surveillance Center**