

INFECTIOUS DISEASES WEEKLY REPORT

# TOKYO IDWR

Tokyo Metropolitan Institute of Public Health

12 December 2006 / Number 48

- Number of patients with the diseases required notifying all the cases
- Number of patients with the diseases to be reported by the sentinel clinics and hospitals
- Disease trend graph (weekly reported cases per sentinel in comparison)

## Surveillance System in Tokyo, Japan

### The infectious diseases which all physicians must report

All physicians must report to health centers the incidence of the diseases which are shown at page one. Health centers electronically report the individual cases to Tokyo Metropolitan Infectious Disease Surveillance Center.

### The infectious diseases required to be reported by the sentinels

The numbers of patients who visit the sentinel clinics or hospitals during a week are reported to health centers in Tokyo. And they electronically report the numbers to Tokyo Metropolitan Infectious Disease Surveillance Center. We have about 260 sentinel clinics and hospitals in Tokyo.

1<sup>st</sup> Week is early January and 52<sup>nd</sup> Week is end of December.

Tokyo Metropolitan Infectious Disease Surveillance Center  
Tokyo Metropolitan Institute of Public Health

TEL:81-3-3363-3213 FAX:81-3-5332-7365  
e-mail:[idsc@tokyo-eiken.go.jp](mailto:idsc@tokyo-eiken.go.jp)  
URL:[idsc.tokyo-eiken.go.jp/](http://idsc.tokyo-eiken.go.jp/)

## Number of patients with the diseases which all physicians must report

Category	Diseases	Tokyo					Japan	
		45th	46th	47th	48th	Total	48th	Total
I	Ebola hemorrhagic fever							
	Crimean-Congo hemorrhagic fever							
	Severe acute respiratory syndrome							
	Smallpox							
	Plague							
	Marburg disease							
	Lassa fever							
II	Acute poliomyelitis							
	Cholera					8		46
	Shigellosis		1		2	61	12	457
	Diphtheria							
	Typhoid fever					17	1	68
	Paratyphoid fever					11	1	23
III	Enterohemorrhagic <i>Escherichia coli</i> infection	3	5	3		260	32	3720
IV	Hepatitis E	1				4	1	62
	West Nile fever							
	Hepatitis A					26	2	307
	Echinococcosis					1		20
	Yellow fever							
	Psittacosis					4		21
	Relapsing fever							
	Q fever							2
	Rabies							2
	High pathogenic avian influenza							
	Coccidioidomycosis					1		2
	Monkeypox							
	Hemorrhagic fever with renal syndrome							
	Anthrax							
	Scrub typhus (Tsumugamushi disease)						17	294
	Dengue fever		2			16		53
	Nipah virus infection							
	Japanese spotted fever							44
	Japanese encephalitis							7
	Hantavirus pulmonary syndrome							
	B virus disease							
Brucellosis					1		5	
Epidemic typhus								
Botulism							2	
Malaria				1	15	1	58	
Tularemia								
Lyme disease					2		12	
Lyssavirus infection								
Legionellosis			1		55	11	472	
Leptospirosis					4		23	
V	Amebiasis	6	3	3	2	171	6	684
	Acute viral hepatitis(excluding Hepatitis A,Hepatitis E)			2	1	34	3	261
	Acute encephalitis	1				6	1	147
	Cryptosporidiosis					5	1	16
	Creutzfeldt-Jakob Disease		1			19		157
	Sever invasive streptococcal infections					13		98
	Acquired immunodeficiency syndrome	22	15	8	9	422	11	1197
	Giardiasis	2		1		27		81
	Meningococcal meningitis					1		13
	Congenital rubella syndrome							
	Syphilis	5	4	1	1	123	3	568
	Tetanus					7	1	109
	Vancomycin-resistant <i>Staphylococcus aureus</i> infection							
	Vancomycin-resistant <i>enterococcus</i> infection	2		1		18	4	71

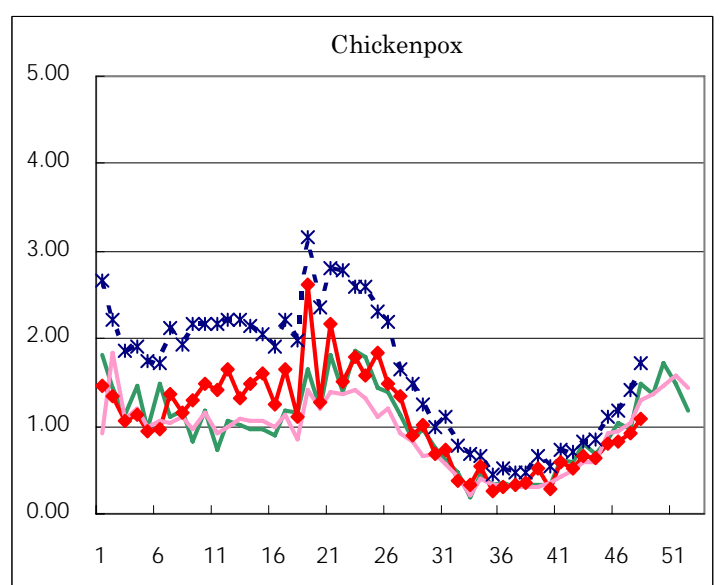
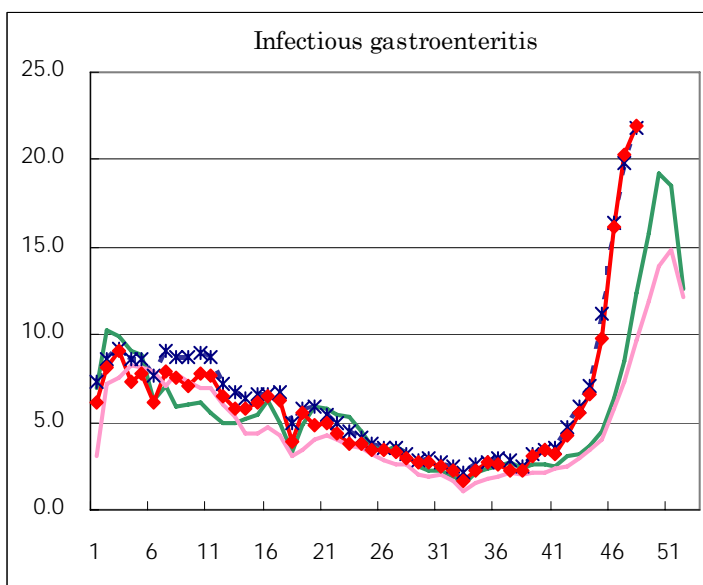
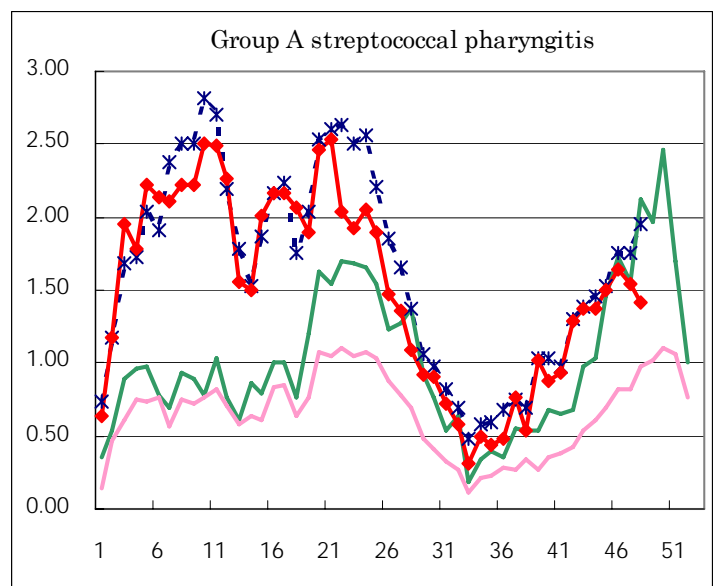
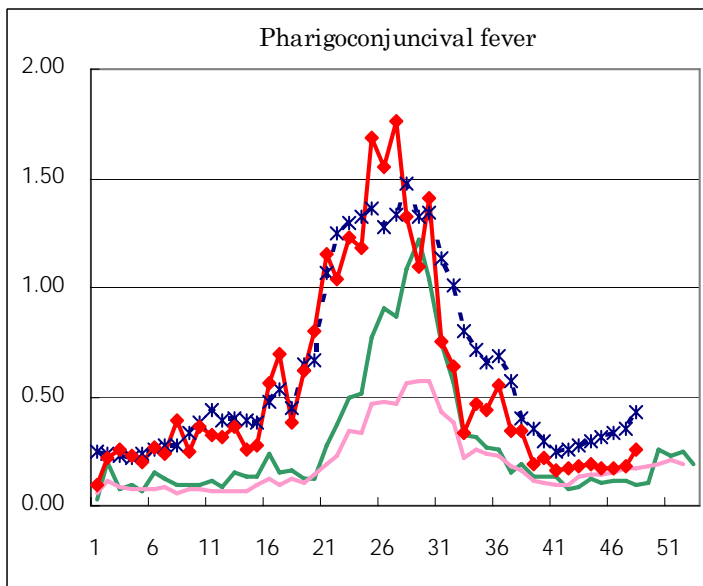
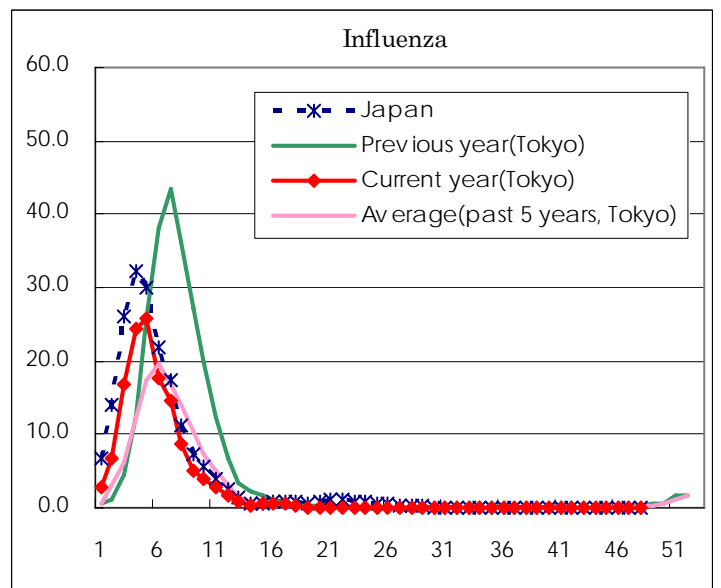
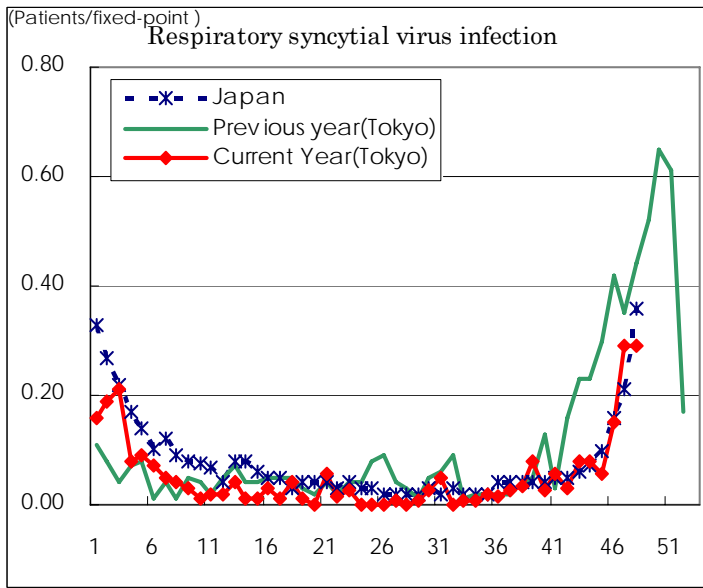
( Blank means 0. )

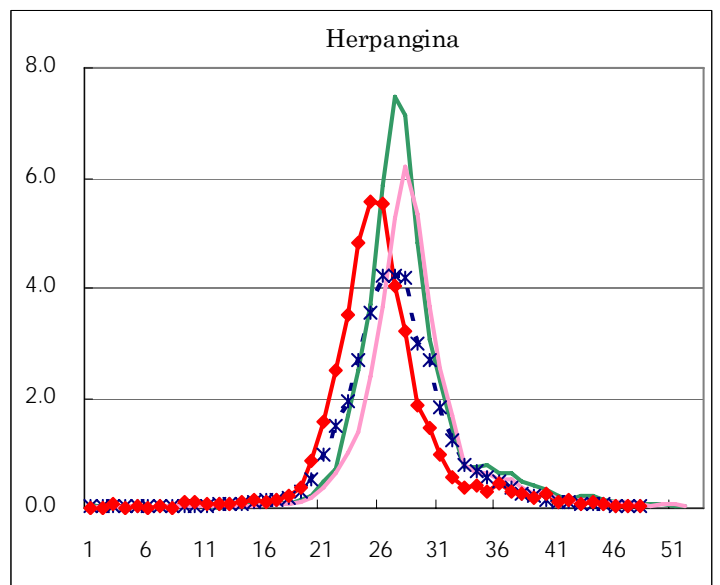
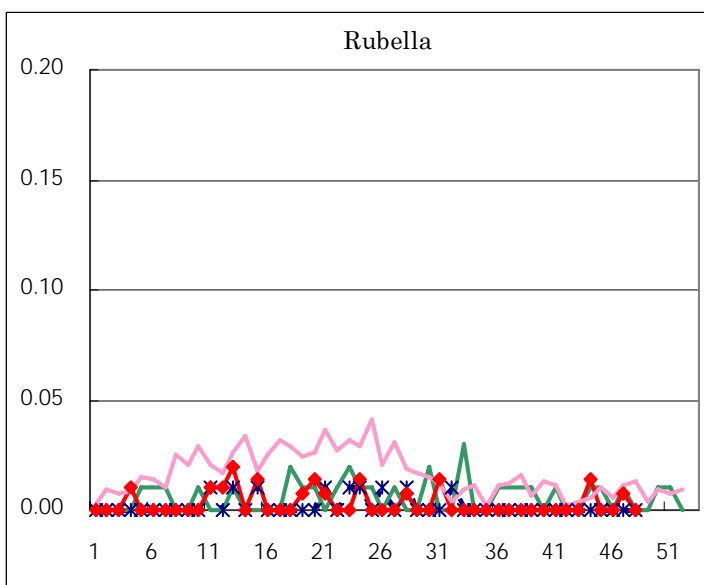
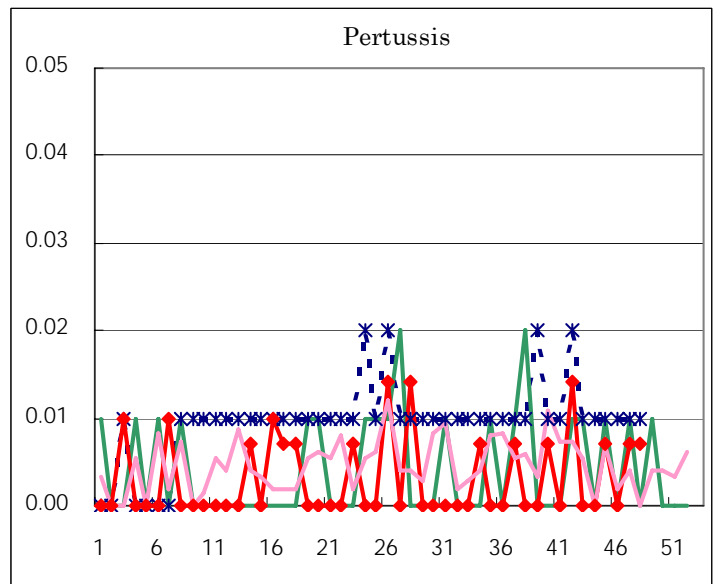
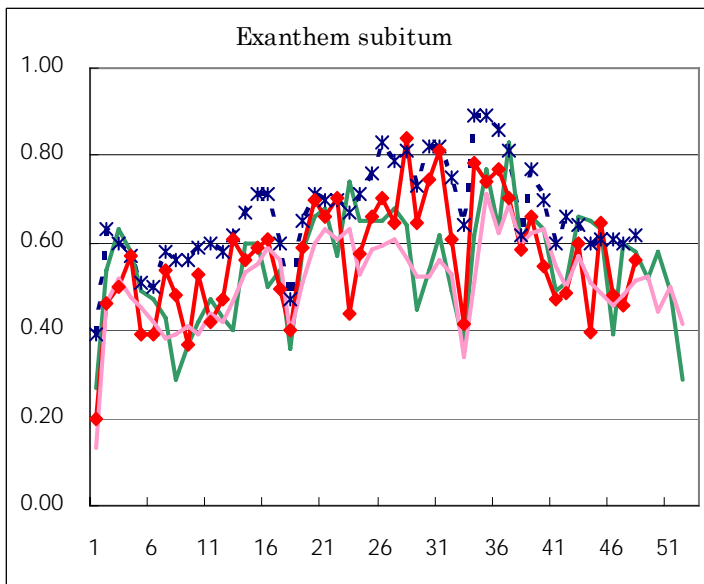
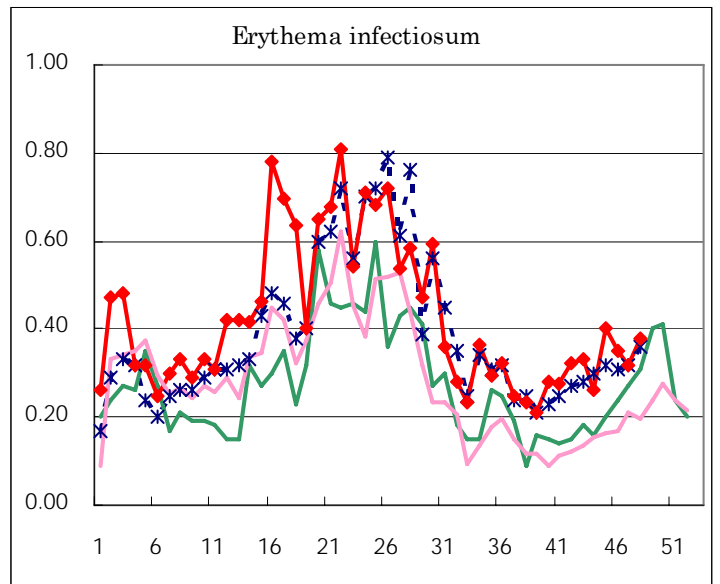
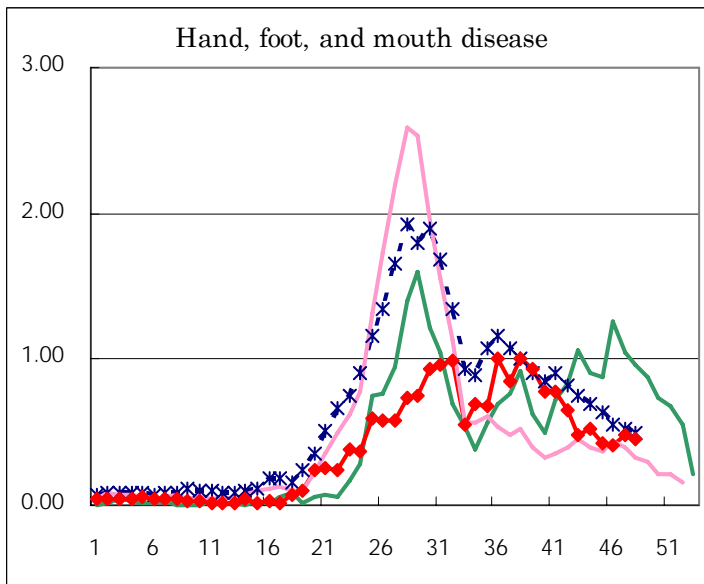
Number of patients with the diseases to be reported  
by the designated clinics and hospitals

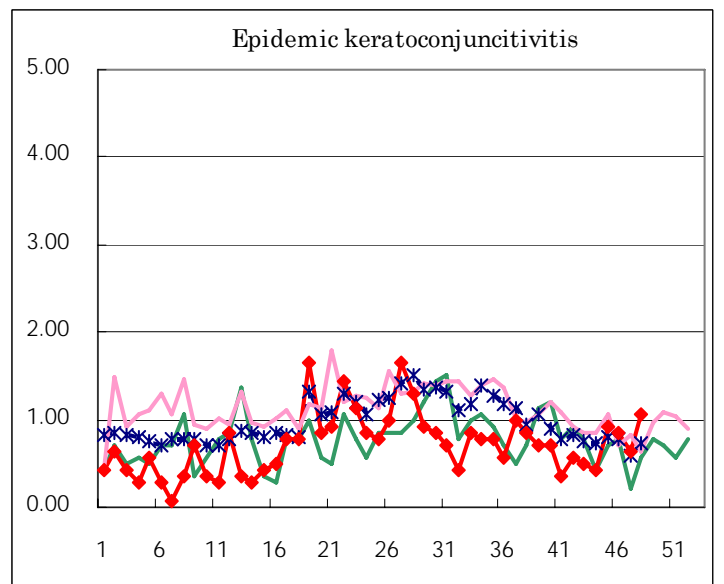
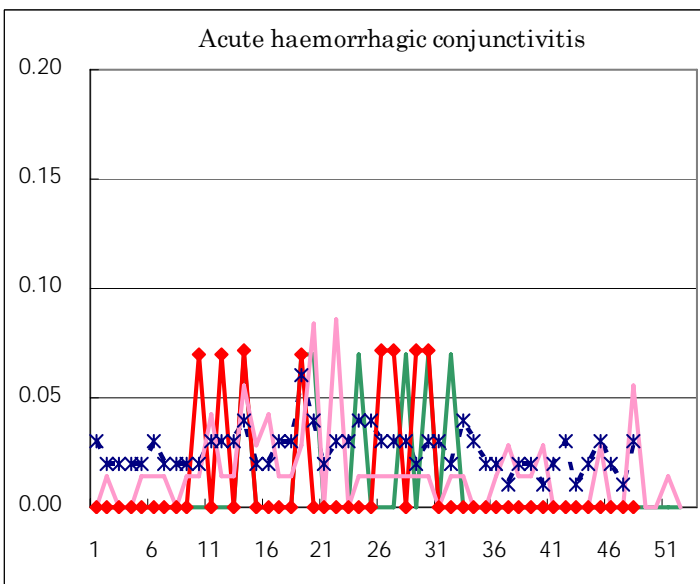
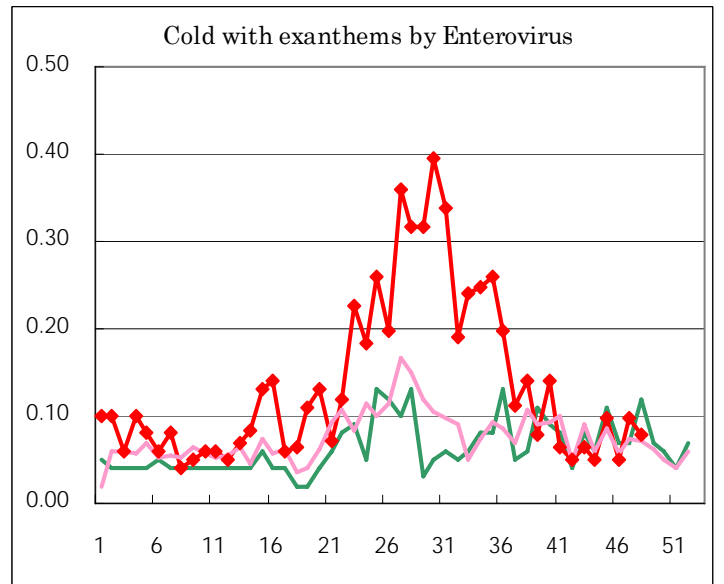
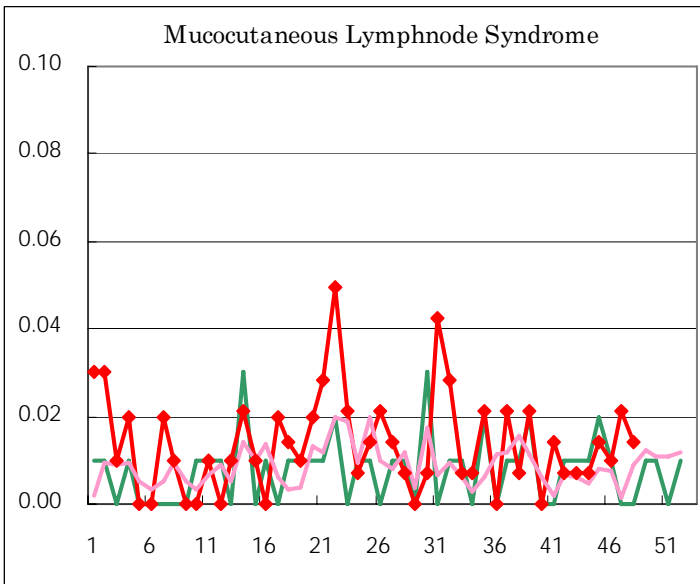
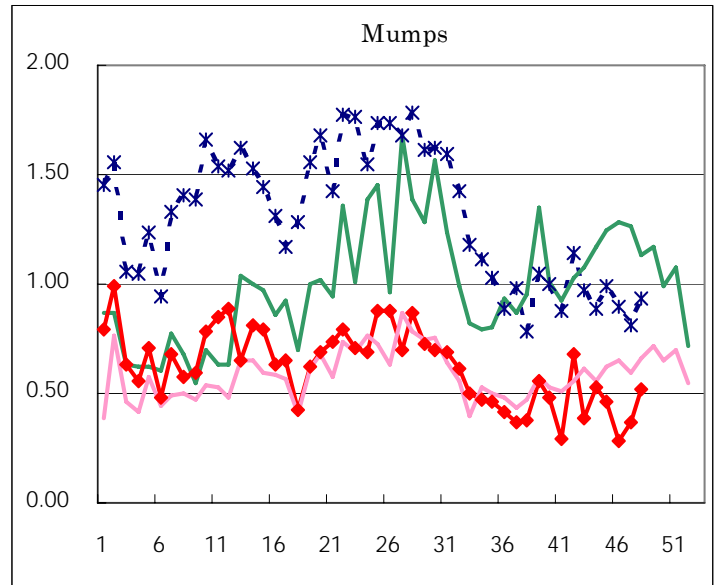
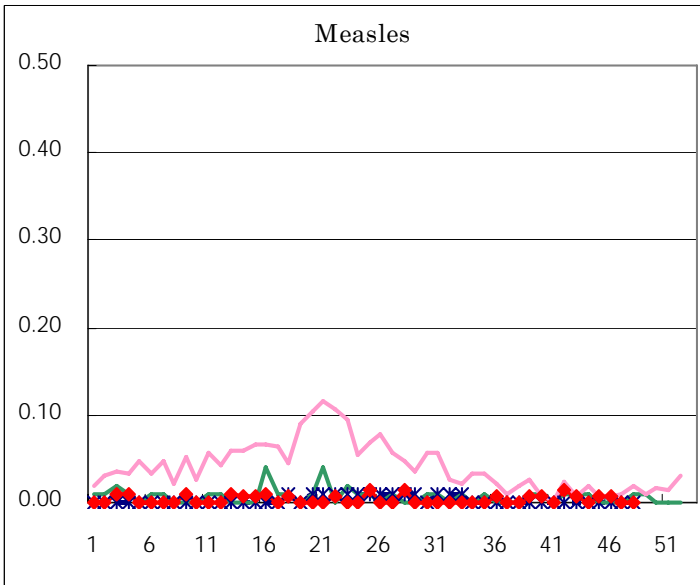
Diseases	Sex	2006				Total
		45th	46th	47th	48th	
Respiratory syncytial virus infection	M	6	13	23	27	69
	F	2	9	18	14	43
Influenza	M	1	1	1		3
	F		2	2	1	5
Pharyngoconjunctival fever	M	18	16	20	21	75
	F	6	8	6	16	36
Group A streptococcal pharyngitis	M	115	127	109	119	470
	F	100	107	110	81	398
Infectious gastroenteritis	M	721	1,148	1,464	1,562	4,895
	F	678	1,149	1,410	1,546	4,783
Chickenpox	M	59	63	62	69	253
	F	57	55	69	84	265
Hand, foot, and mouth disease	M	39	34	40	39	152
	F	23	24	28	26	101
Erythema infectiosum	M	22	21	21	24	88
	F	35	29	24	30	118
Exanthem subitum	M	50	44	37	45	176
	F	42	24	28	35	129
Pertussis	M	1			1	2
	F			1		1
Rubella	M			1		1
	F					
Herpangina	M	8	3	4	1	16
	F	1	2	1	5	9
Measles	M	1	1			2
	F					
Mumps	M	36	20	24	37	117
	F	33	20	28	37	118
Cold with exanthems by Enterovirus	M	6	4	7	7	24
	F	8	3	7	4	22
Mucocutaneous Lymphnode Syndrome	M	1		1	2	4
	F	1	1	2		4
Acute hemorrhagic conjunctivitis	M					
	F					
Epidemic keratoconjunctivitis	M	6	5	4	8	23
	F	7	7	5	7	26
Bacterial meningitis	M					
	F					
Aseptic meningitis	M	2	1		2	5
	F			1	1	2
Mycoplasma pneumonia	M	10	5	3	2	20
	F	4	2		4	10
Chlamydial pneumonia (excluding psittacosis)	M	1			1	2
	F	3				3
Measles in adults	M			1	1	2
	F					

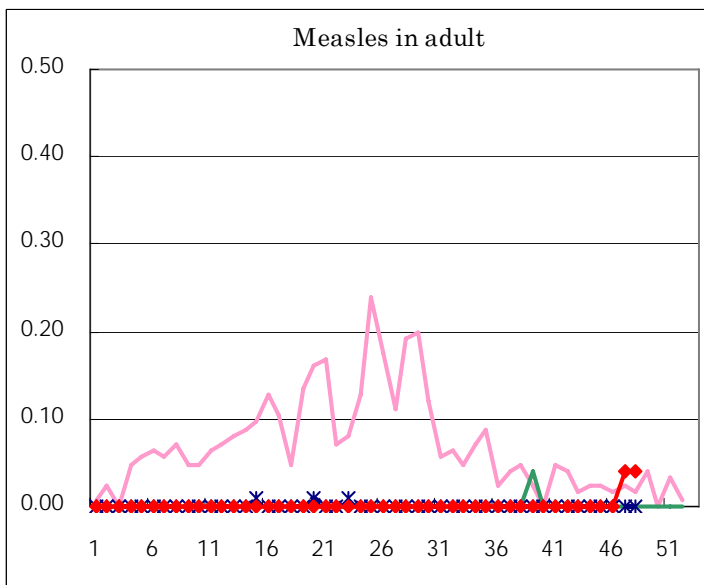
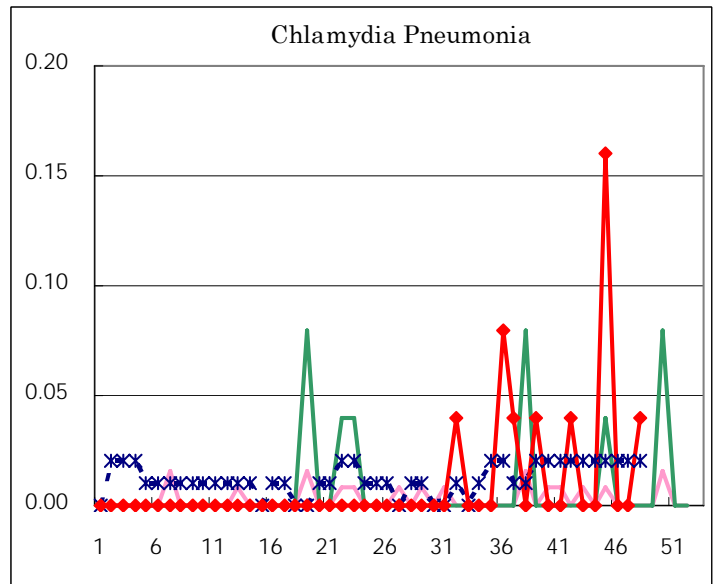
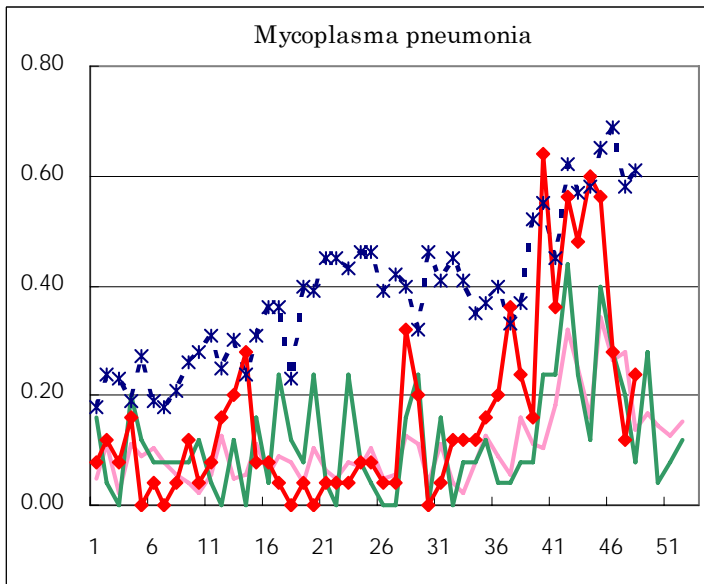
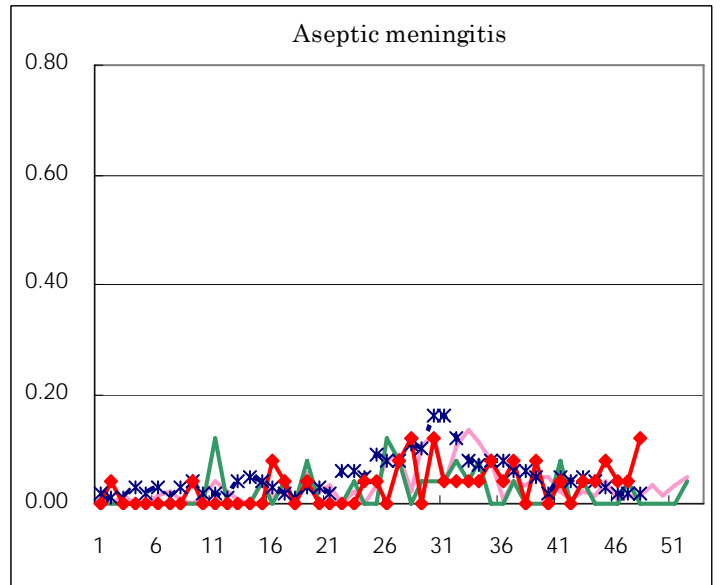
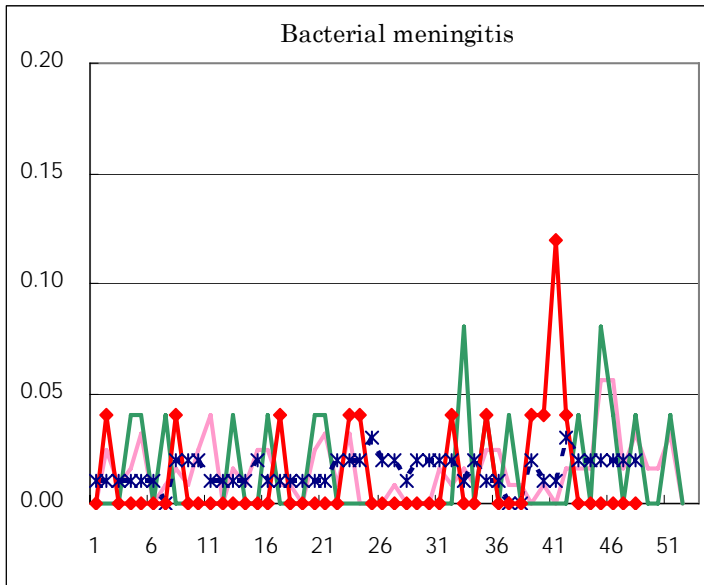
( Blank means 0. )

# Disease Trend Graph (weekly reported cases per fixed-point in comparison)









Tokyo Metropolitan Government  
**Infectious Disease Surveillance Center**