

INFECTIOUS DISEASES WEEKLY REPORT

# TOKYO IDWR

Tokyo Metropolitan Institute of Public Health

26 December 2006 / Number 50

- Number of patients with the diseases required notifying all the cases
- Number of patients with the diseases to be reported by the sentinel clinics and hospitals
- Disease trend graph (weekly reported cases per sentinel in comparison)

## Surveillance System in Tokyo, Japan

### The infectious diseases which all physicians must report

All physicians must report to health centers the incidence of the diseases which are shown at page one. Health centers electronically report the individual cases to Tokyo Metropolitan Infectious Disease Surveillance Center.

### The infectious diseases required to be reported by the sentinels

The numbers of patients who visit the sentinel clinics or hospitals during a week are reported to health centers in Tokyo. And they electronically report the numbers to Tokyo Metropolitan Infectious Disease Surveillance Center. We have about 260 sentinel clinics and hospitals in Tokyo.

1<sup>st</sup> Week is early January and 52<sup>rd</sup> Week is end of December.

Tokyo Metropolitan Infectious Disease Surveillance Center  
Tokyo Metropolitan Institute of Public Health

TEL:81-3-3363-3213 FAX:81-3-5332-7365  
e-mail:[idsc@tokyo-eiken.go.jp](mailto:idsc@tokyo-eiken.go.jp)  
URL:[idsc.tokyo-eiken.go.jp/](http://idsc.tokyo-eiken.go.jp/)

## Number of patients with the diseases which all physicians must report

Category	Diseases	Tokyo				Japan		
		47th	48th	49th	50th	Total	50th	Total
I	Ebola hemorrhagic fever							
	Crimean-Congo hemorrhagic fever							
	Severe acute respiratory syndrome							
	Smallpox							
	Plague							
	Marburg disease							
	Lassa fever							
II	Acute poliomyelitis							
	Cholera					8		46
	Shigellosis		2	1	2	64	8	469
	Diphtheria							
	Typhoid fever					17		70
	Paratyphoid fever					11		24
III	Enterohemorrhagic <i>Escherichia coli</i> infection	3		1	2	263	49	3824
IV	Hepatitis E					4	3	68
	West Nile fever							
	Hepatitis A			1	1	28	1	310
	Echinococcosis					1		20
	Yellow fever							
	Psittacosis					4		22
	Relapsing fever							
	Q fever							2
	Rabies							2
	High pathogenic avian influenza							
	Coccidioidomycosis					1		2
	Monkeypox							
	Hemorrhagic fever with renal syndrome							
	Anthrax							
	Scrub typhus (Tsumugamushi disease)						14	354
	Dengue fever					16	1	54
	Nipah virus infection							
	Japanese spotted fever							44
	Japanese encephalitis							7
	Hantavirus pulmonary syndrome							
	B virus disease							
	Brucellosis					1		5
	Epidemic typhus							
Botulism							2	
Malaria		1			15	2	60	
Tularemia								
Lyme disease					2		12	
Lyssavirus infection								
Legionellosis	1		1	1	57	4	488	
Leptospirosis					4	1	24	
V	Amebiasis	3	2	3	3	177	12	710
	Acute viral hepatitis(excluding Hepatitis A,Hepatitis E)	2	1			34	1	268
	Acute encephalitis					6		157
	Cryptosporidiosis					5		14
	Creutzfeldt-Jakob Disease				2	21	1	166
	Sever invasive streptococcal infections					13	1	104
	Acquired immunodeficiency syndrome	8	9	13	9	444	13	1257
	Giardiasis	1			1	28		82
	Meningococcal meningitis					1		14
	Congenital rubella syndrome							
	Syphilis	1	1	1	3	127	7	598
	Tetanus					7	1	113
	Vancomycin-resistant <i>Staphylococcus aureus</i> infection							
	Vancomycin-resistant <i>enterococcus</i> infection	1				18		74

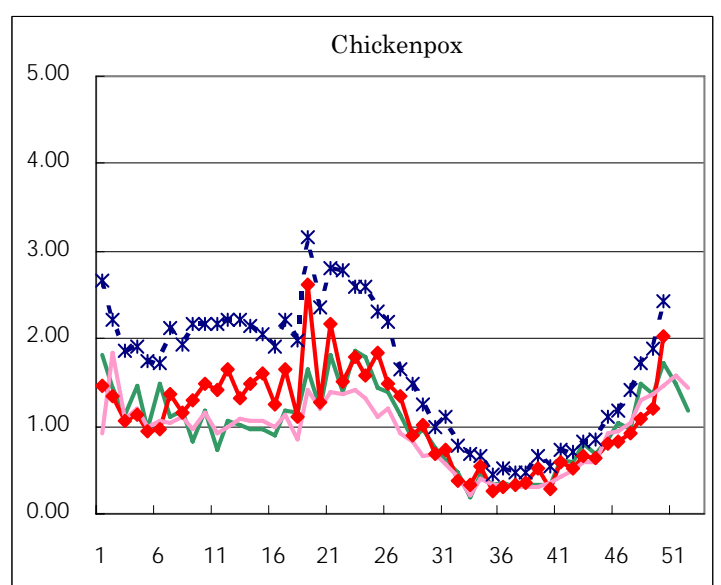
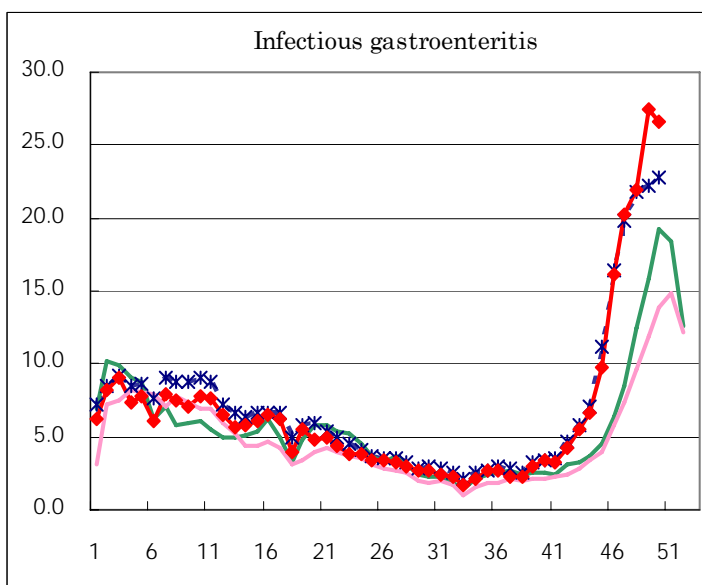
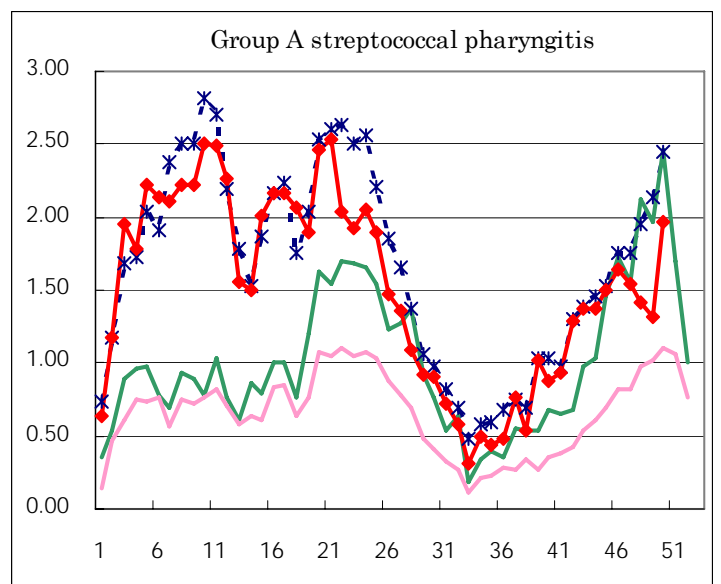
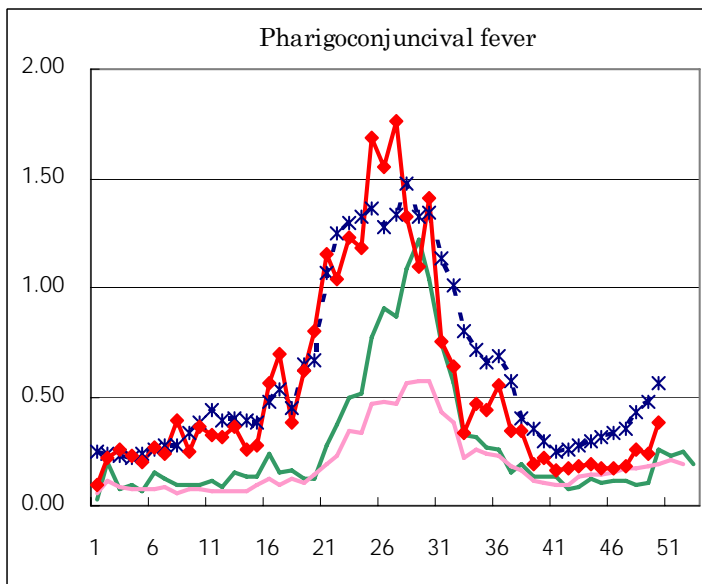
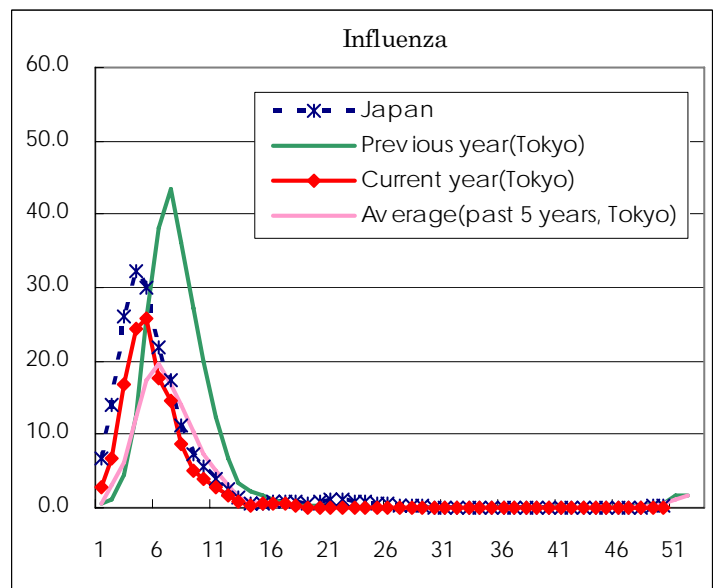
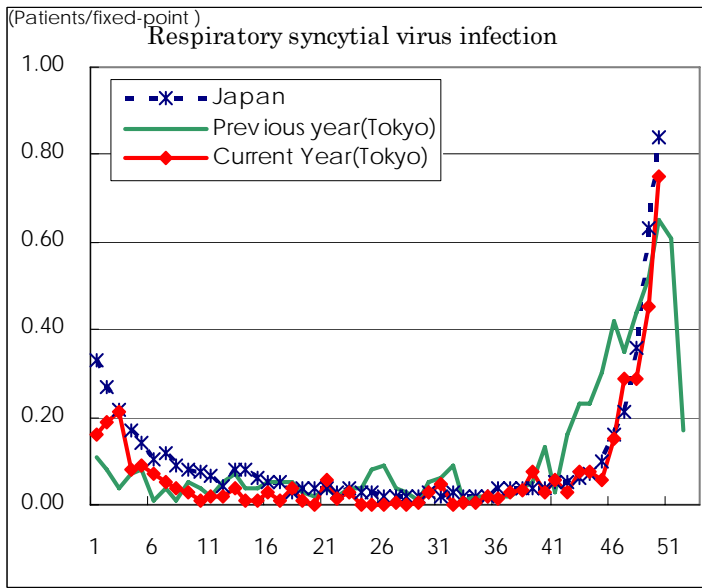
( Blank means 0. )

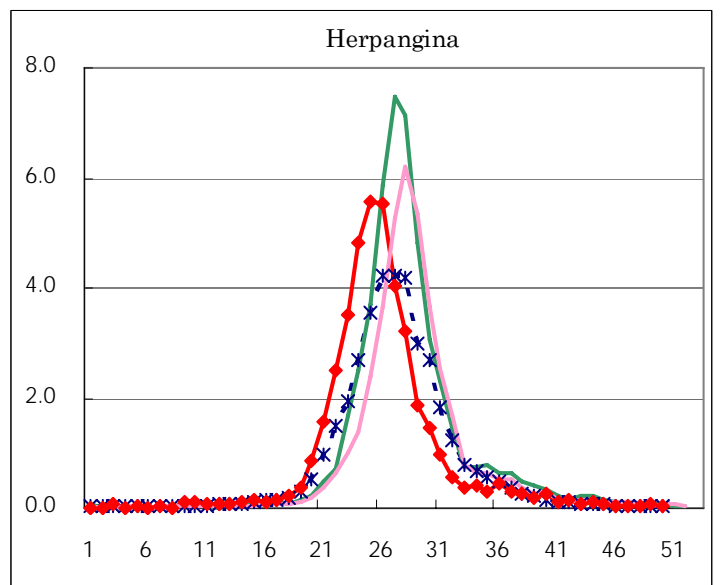
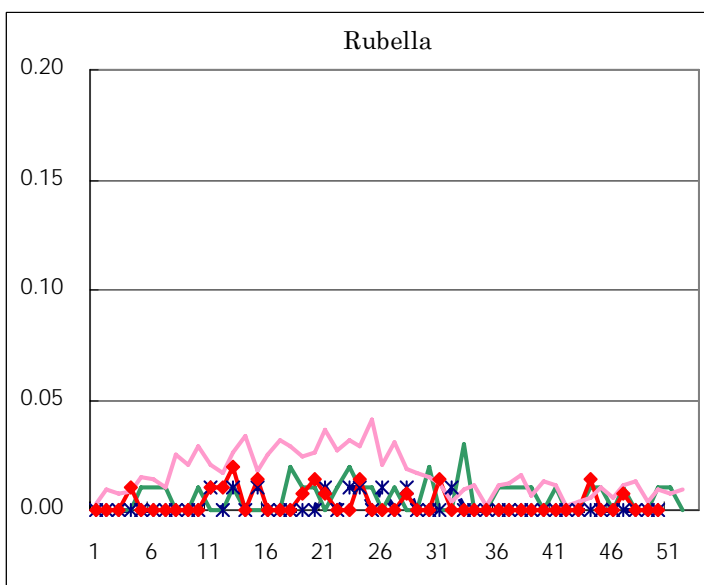
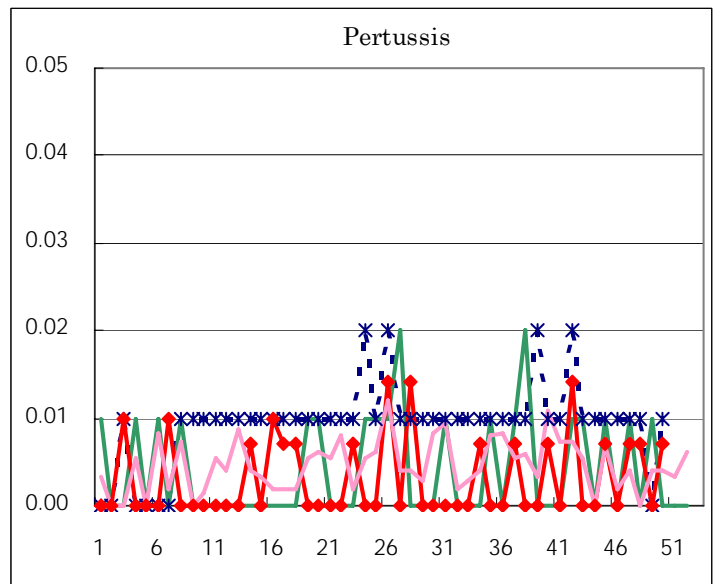
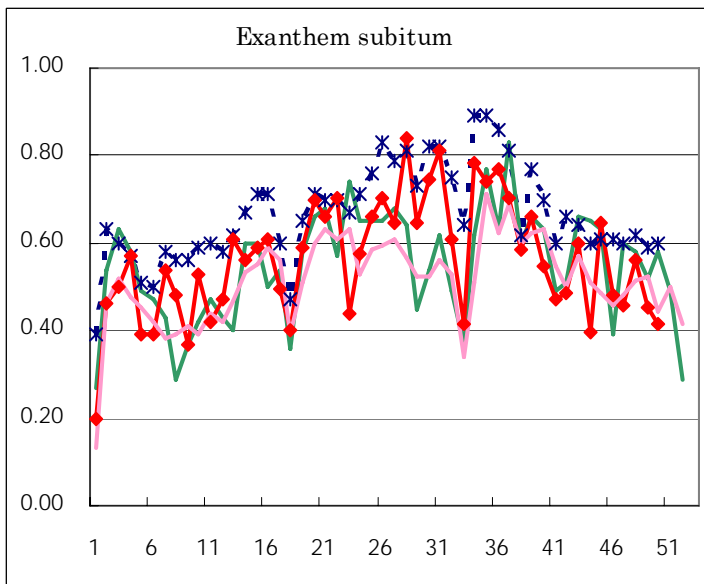
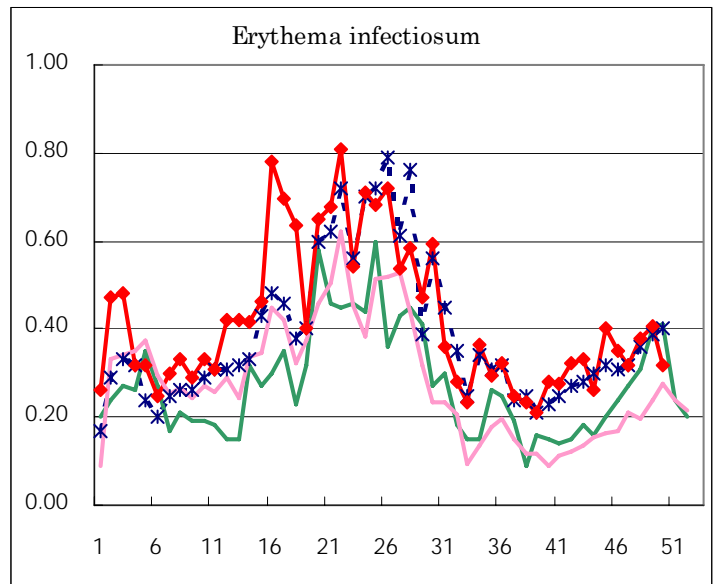
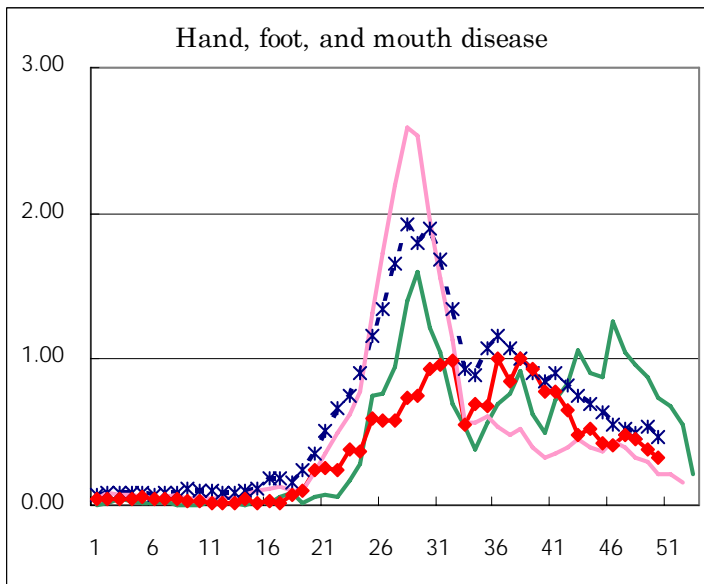
Number of patients with the diseases to be reported  
by the designated clinics and hospitals

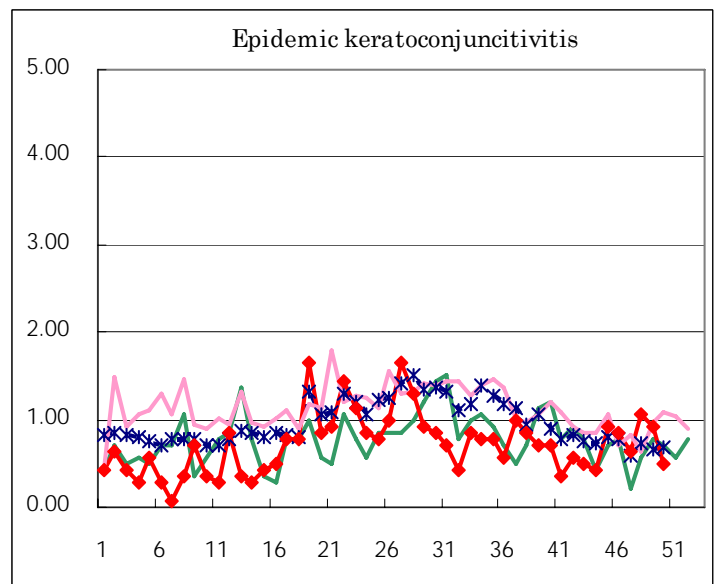
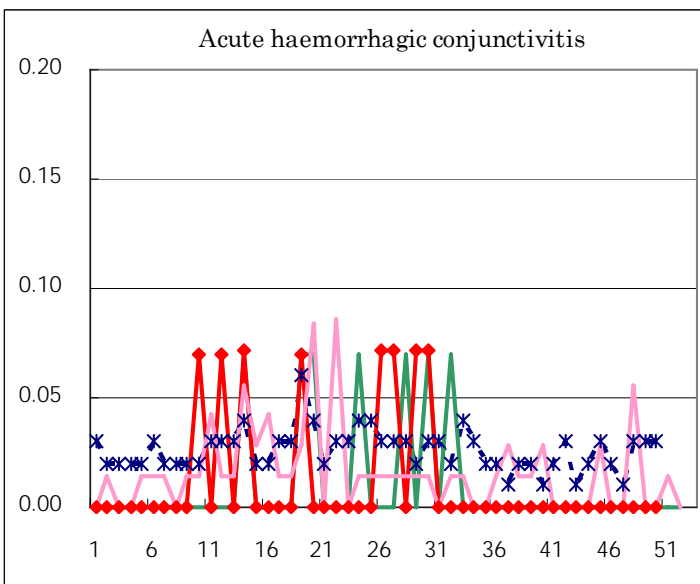
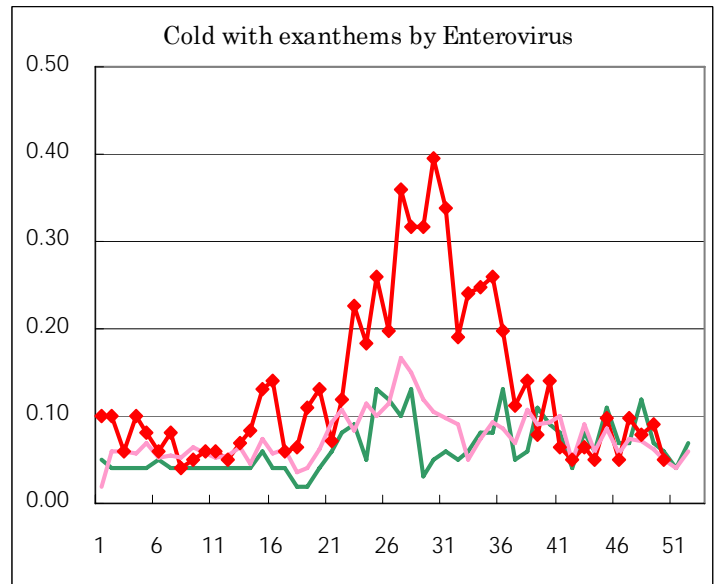
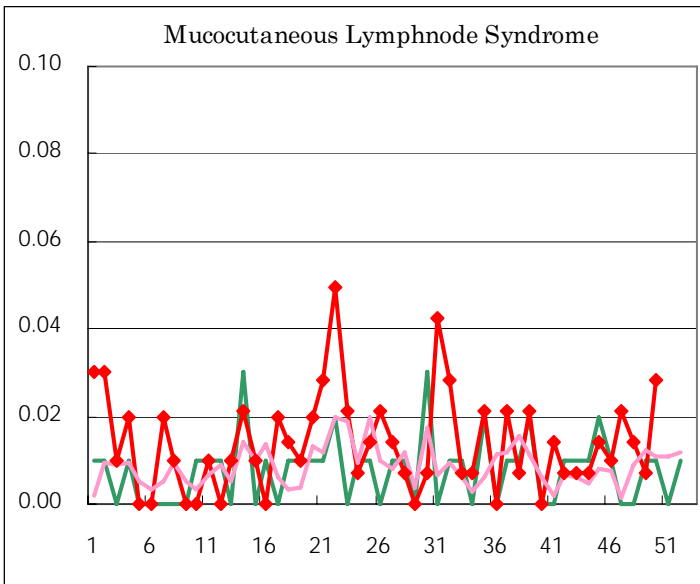
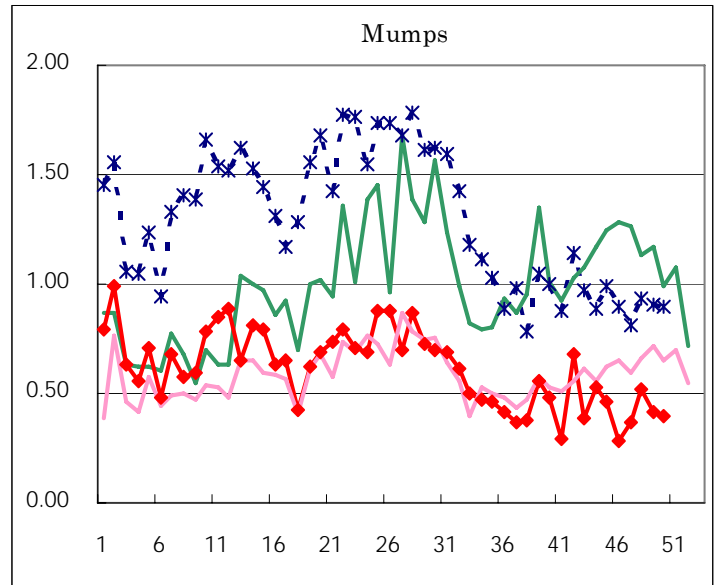
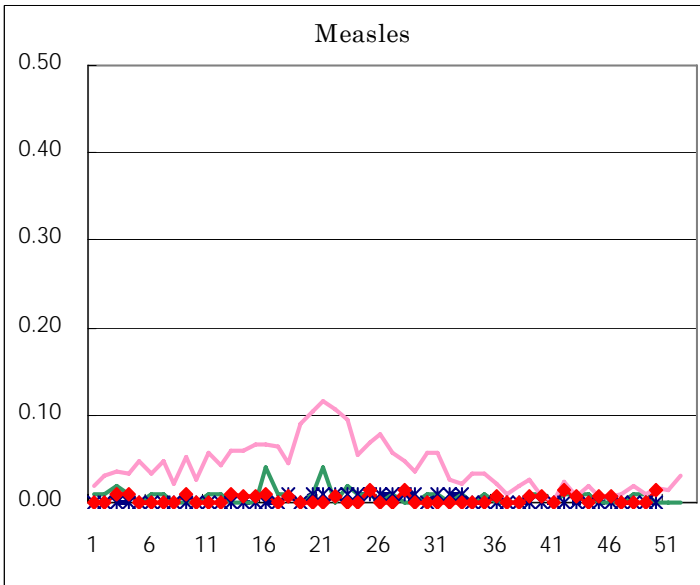
Diseases	Sex	2006				Total
		47th	48th	49th	50th	
Respiratory syncytial virus infection	M	23	27	36	64	150
	F	18	14	28	43	103
Influenza	M	1		1	2	4
	F	2	1	2		5
Pharygoconjunctival fever	M	20	21	14	32	87
	F	6	16	20	22	64
Group A streptococcal pharyngitis	M	109	119	97	138	463
	F	110	81	90	142	423
Infectious gastroenteritis	M	1,464	1,562	1,952	1,856	6,834
	F	1,410	1,546	1,944	1,913	6,813
Chickenpox	M	62	69	86	147	364
	F	69	84	84	141	378
Hand, foot, and mouth disease	M	40	39	33	23	135
	F	28	26	21	24	99
Erythema infectiosum	M	21	24	28	20	93
	F	24	30	30	25	109
Exanthem subitum	M	37	45	34	34	150
	F	28	35	30	25	118
Pertussis	M		1			1
	F	1			1	2
Rubella	M	1				1
	F					
Herpangina	M	4	1	6	3	14
	F	1	5	2	2	10
Measles	M				2	2
	F					
Mumps	M	24	37	33	32	126
	F	28	37	26	24	115
Cold with exanthems by Enterovirus	M	7	7	6	2	22
	F	7	4	7	5	23
Mucocutaneous Lymphnode Syndrome	M	1	2	1	3	7
	F	2			1	3
Acute hemorrhagic conjunctivitis	M					
	F					
Epidemic keratoconjunctivitis	M	4	8	9	2	23
	F	5	7	4	5	21
Bacterial meningitis	M					
	F				1	1
Aseptic meningitis	M		2	1		3
	F	1	1			2
Mycoplasma pneumonia	M	3	2	3	3	11
	F		4		1	5
Chlamydial pneumonia (excluding psittacosis)	M		1			1
	F			1		1
Measles in adults	M	1	1			2
	F					

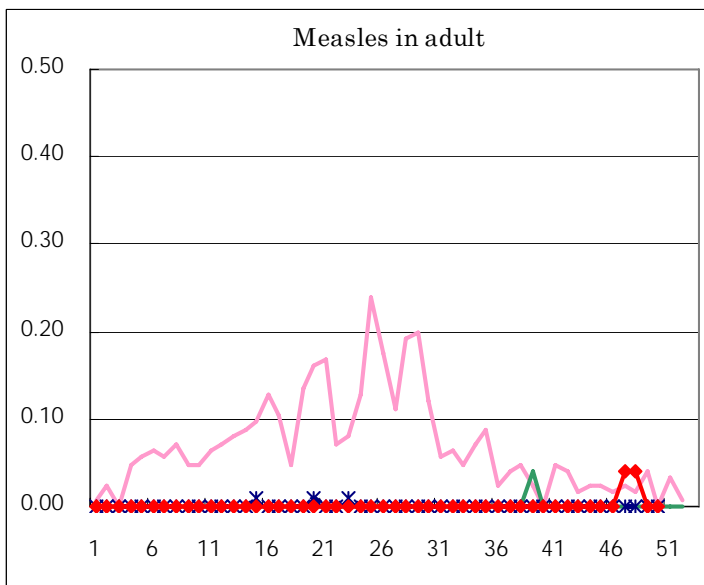
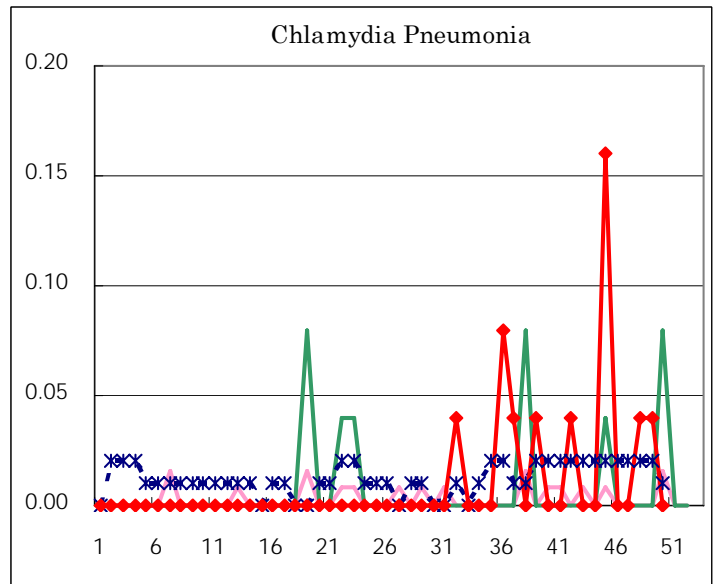
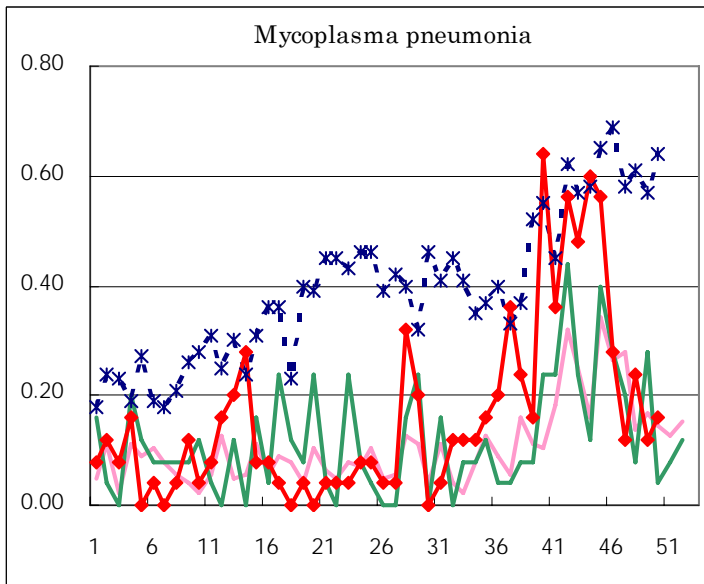
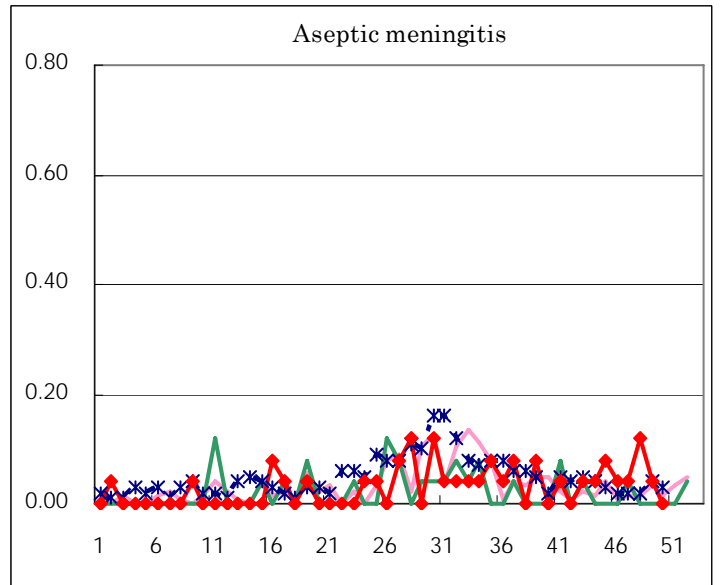
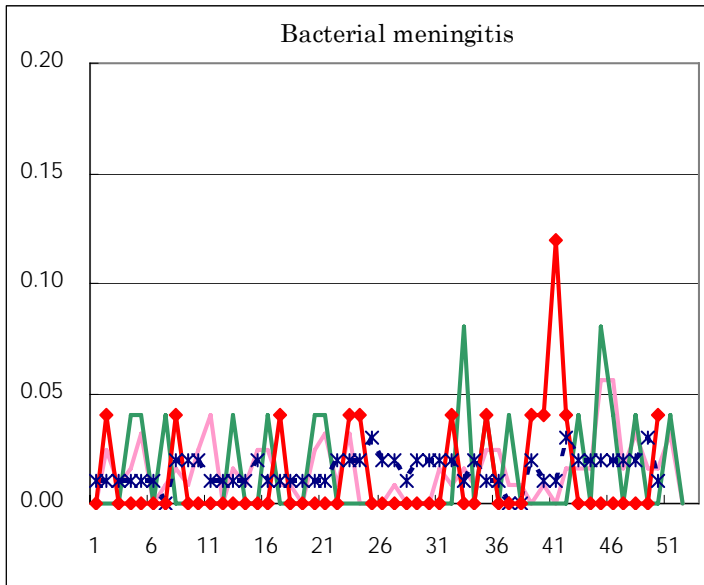
( Blank means 0. )

# Disease Trend Graph (weekly reported cases per fixed-point in comparison)









Tokyo Metropolitan Government  
**Infectious Disease Surveillance Center**