

INFECTIOUS DISEASES WEEKLY REPORT

# TOKYO IDWR

Tokyo Metropolitan Institute of Public Health

4 January 2007 / Number 51

- Number of patients with the diseases required notifying all the cases
- Number of patients with the diseases to be reported by the sentinel clinics and hospitals
- Disease trend graph (weekly reported cases per sentinel in comparison)

## Surveillance System in Tokyo, Japan

### The infectious diseases which all physicians must report

All physicians must report to health centers the incidence of the diseases which are shown at page one. Health centers electronically report the individual cases to Tokyo Metropolitan Infectious Disease Surveillance Center.

### The infectious diseases required to be reported by the sentinels

The numbers of patients who visit the sentinel clinics or hospitals during a week are reported to health centers in Tokyo. And they electronically report the numbers to Tokyo Metropolitan Infectious Disease Surveillance Center. We have about 260 sentinel clinics and hospitals in Tokyo.

1<sup>st</sup> Week is early January and 52<sup>nd</sup> Week is end of December.

Tokyo Metropolitan Infectious Disease Surveillance Center  
Tokyo Metropolitan Institute of Public Health

TEL:81-3-3363-3213 FAX:81-3-5332-7365  
e-mail:[idsc@tokyo-eiken.go.jp](mailto:idsc@tokyo-eiken.go.jp)  
URL:[idsc.tokyo-eiken.go.jp/](http://idsc.tokyo-eiken.go.jp/)

## Number of patients with the diseases which all physicians must report

Category	Diseases	Tokyo					Japan	
		48th	49th	50th	51st	Total	51st	Total
I	Ebola hemorrhagic fever							
	Crimean-Congo hemorrhagic fever							
	Severe acute respiratory syndrome							
	Smallpox							
	Plague							
	Marburg disease							
	Lassa fever							
II	Acute poliomyelitis							
	Cholera					8		46
	Shigellosis	2	1	2		64	5	474
	Diphtheria							
	Typhoid fever				1	18		70
	Paratyphoid fever					11		24
III	Enterohemorrhagic <i>Escherichia coli</i> infection		1	2		263	32	3876
IV	Hepatitis E					4		69
	West Nile fever							
	Hepatitis A		1	1		28	3	314
	Echinococcosis					1		20
	Yellow fever							
	Psittacosis					4		22
	Relapsing fever							
	Q fever							2
	Rabies							2
	High pathogenic avian influenza							
	Coccidioidomycosis					1		2
	Monkeypox							
	Hemorrhagic fever with renal syndrome							
	Anthrax							
	Scrub typhus (Tsutsugamushi disease)						14	376
	Dengue fever				1	17		54
	Nipah virus infection							
	Japanese spotted fever							45
	Japanese encephalitis							7
	Hantavirus pulmonary syndrome							
	B virus disease							
Brucellosis					1		5	
Epidemic typhus								
Botulism							2	
Malaria	1				15	1	61	
Tularemia								
Lyme disease					2		13	
Lyssavirus infection								
Legionellosis		1	1	3	60	7	496	
Leptospirosis					4		24	
V	Amebiasis	2	3	3	1	178	4	719
	Acute viral hepatitis(excluding Hepatitis A,Hepatitis E)	1				34	1	272
	Acute encephalitis					6		158
	Cryptosporidiosis					5		14
	Creutzfeldt-Jakob Disease			2	1	22	1	167
	Sever invasive streptococcal infections					13	1	105
	Acquired immunodeficiency syndrome	9	13	9	5	449	9	1272
	Giardiasis			1		28		83
	Meningococcal meningitis					1		14
	Congenital rubella syndrome							
	Syphilis	1	1	3	1	128	6	613
	Tetanus				1	8	1	114
	Vancomycin-resistant <i>Staphylococcus aureus</i> infection							
	Vancomycin-resistant <i>enterococcus</i> infection					18		74

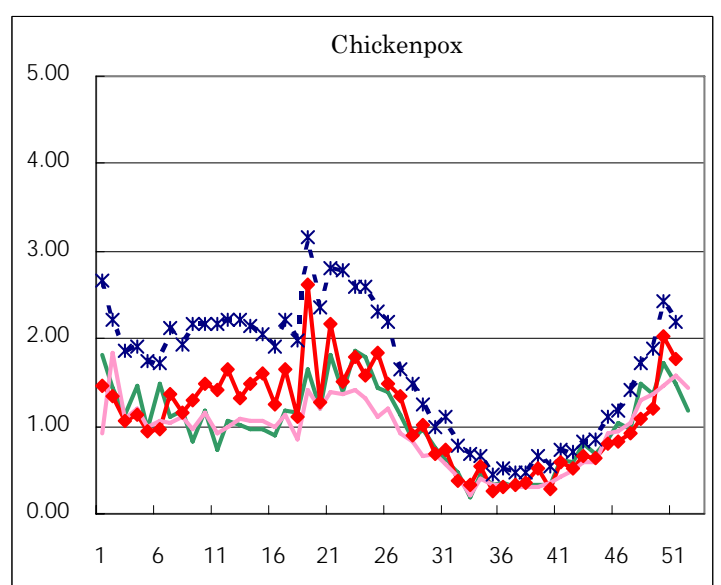
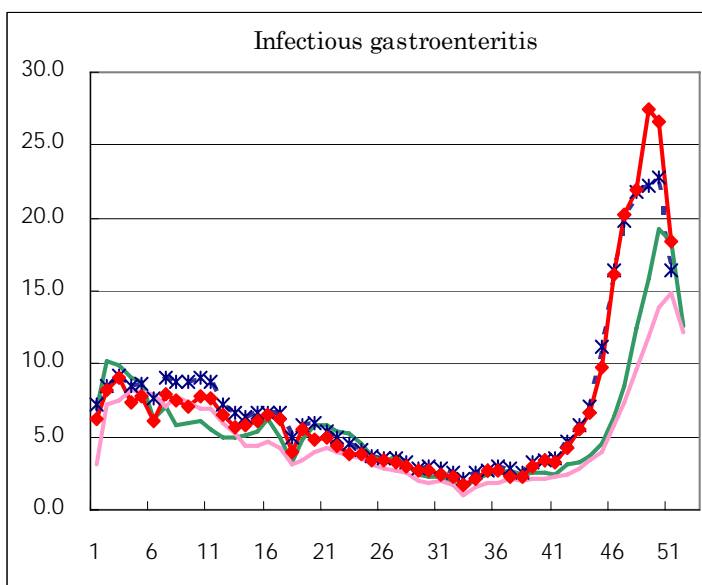
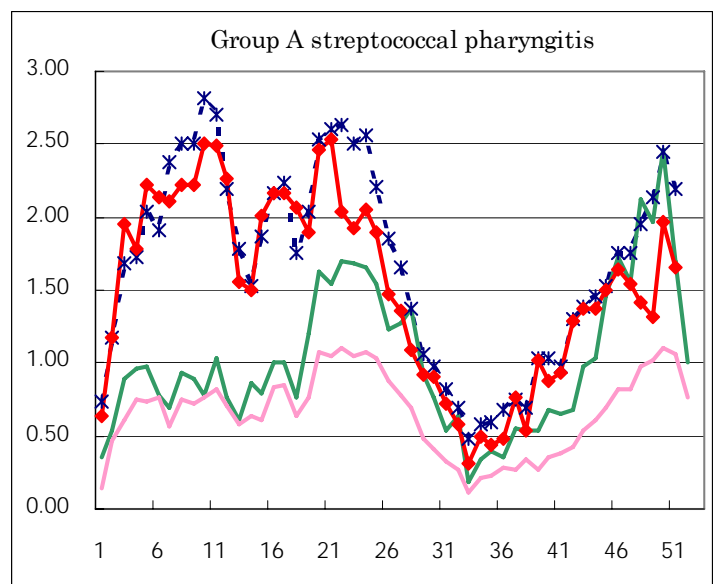
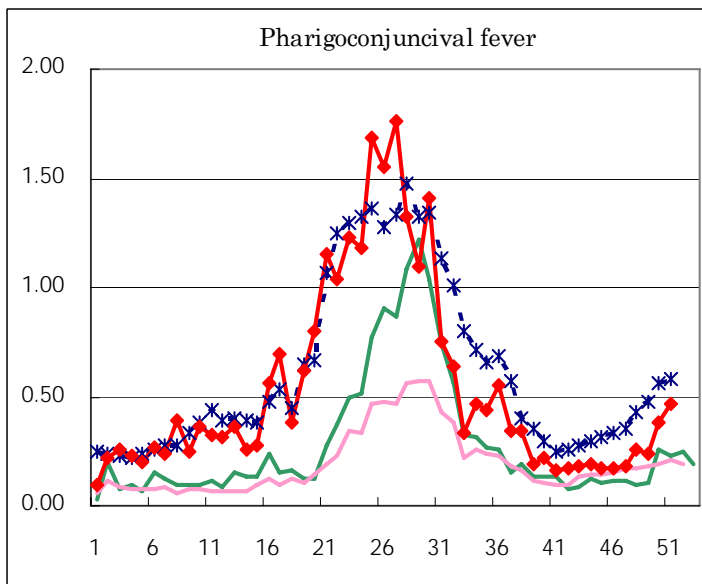
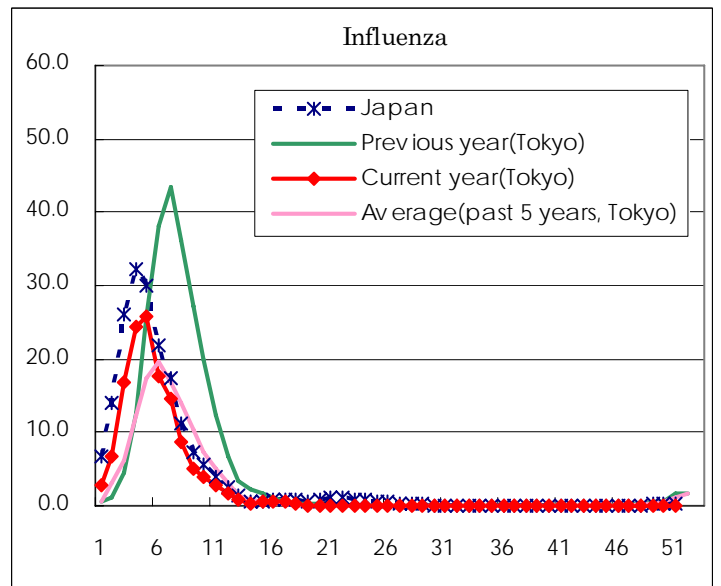
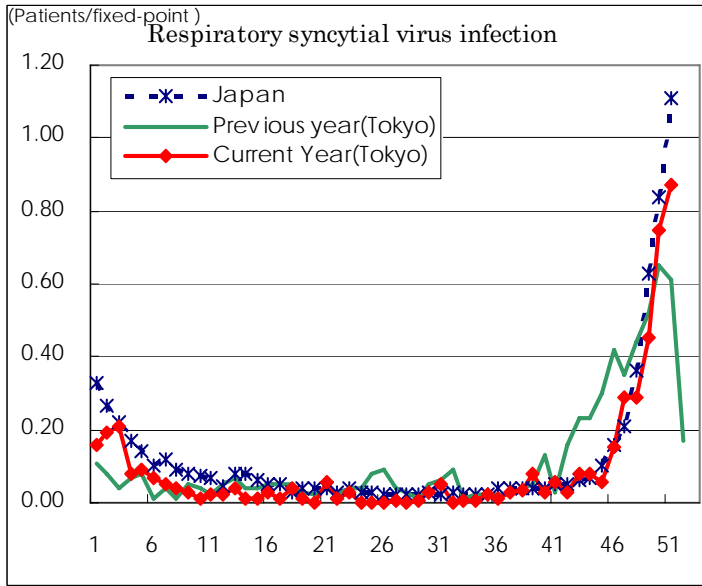
( Blank means 0. )

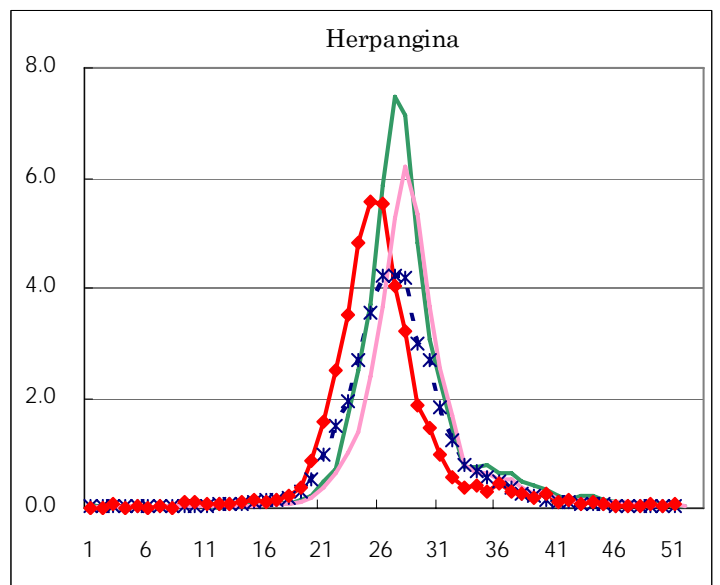
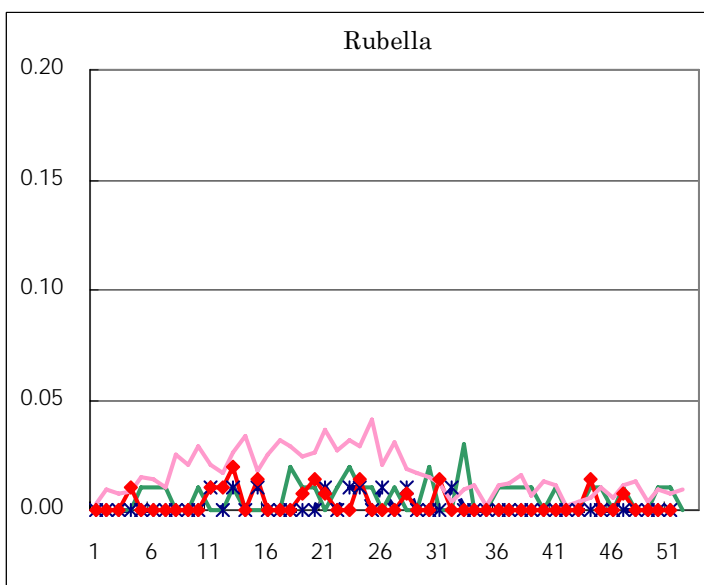
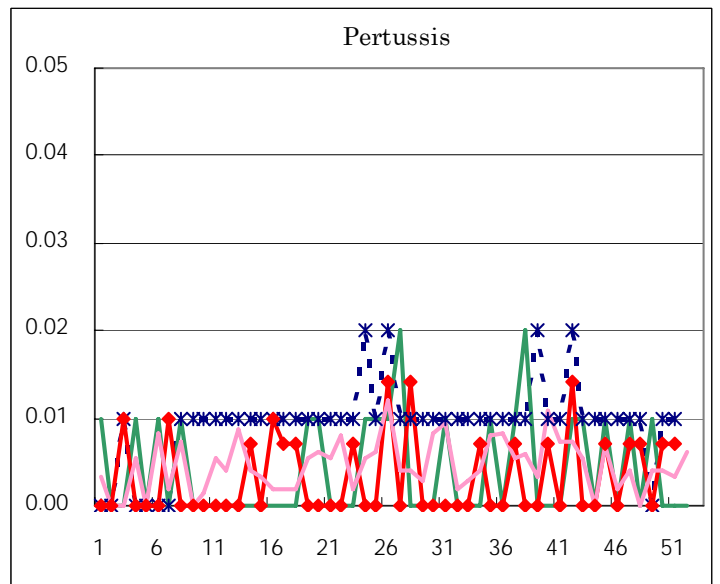
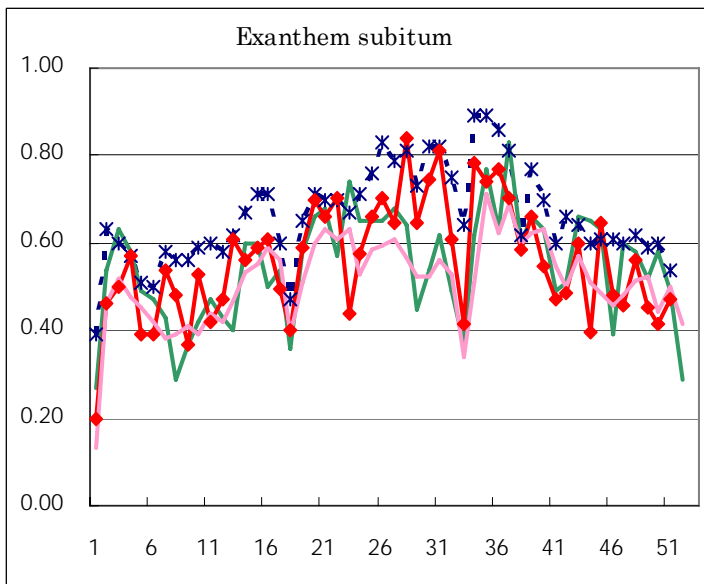
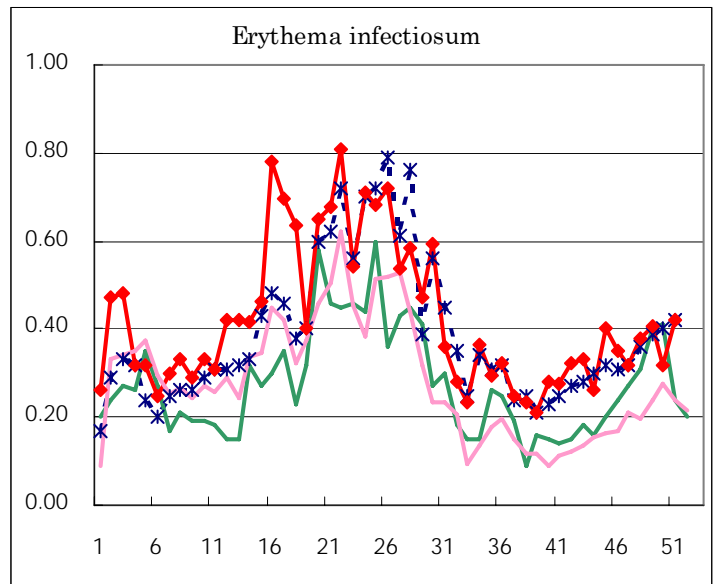
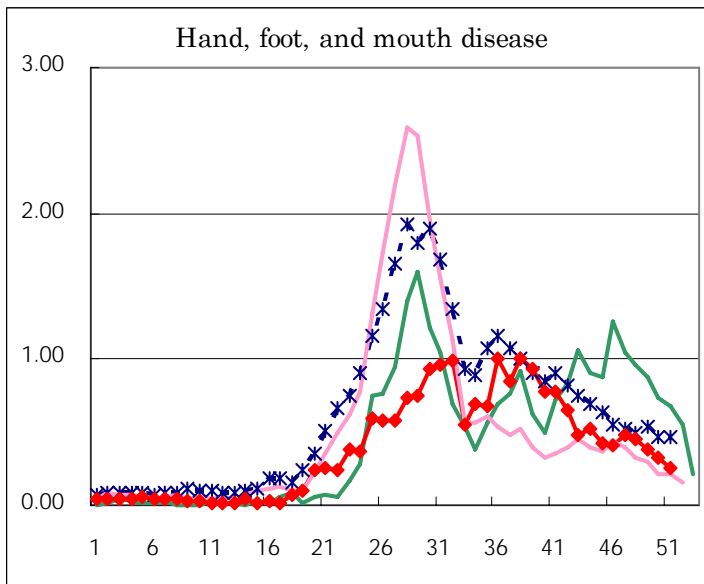
Number of patients with the diseases to be reported  
by the designated clinics and hospitals

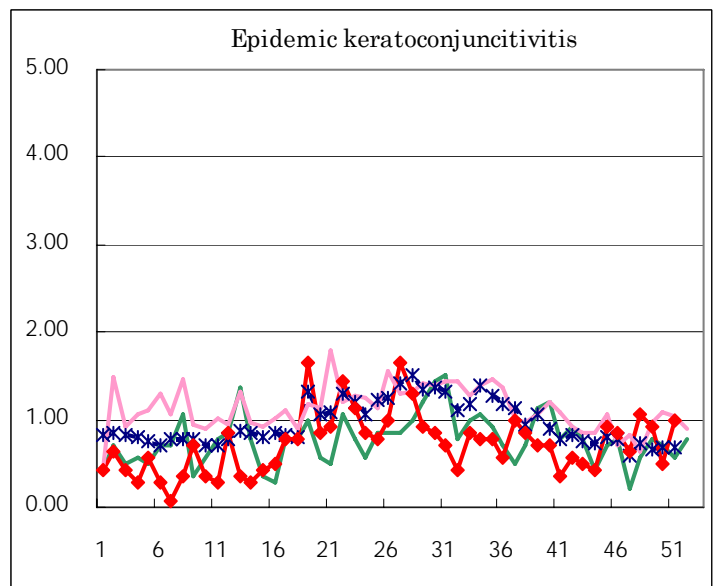
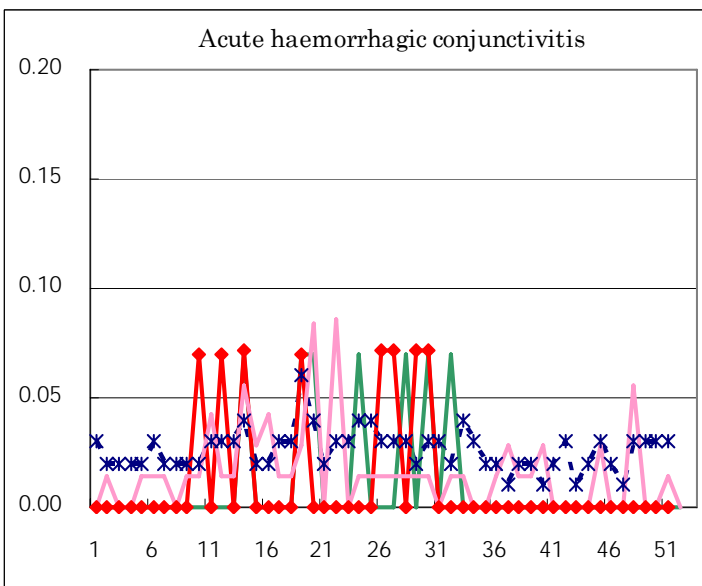
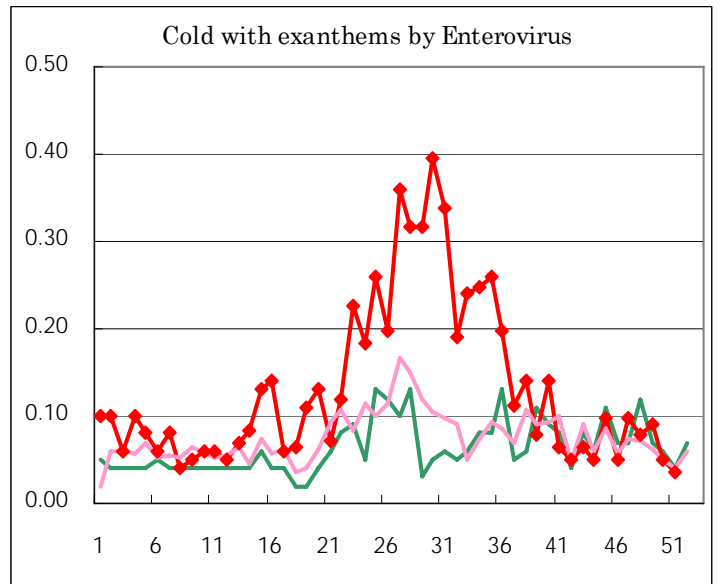
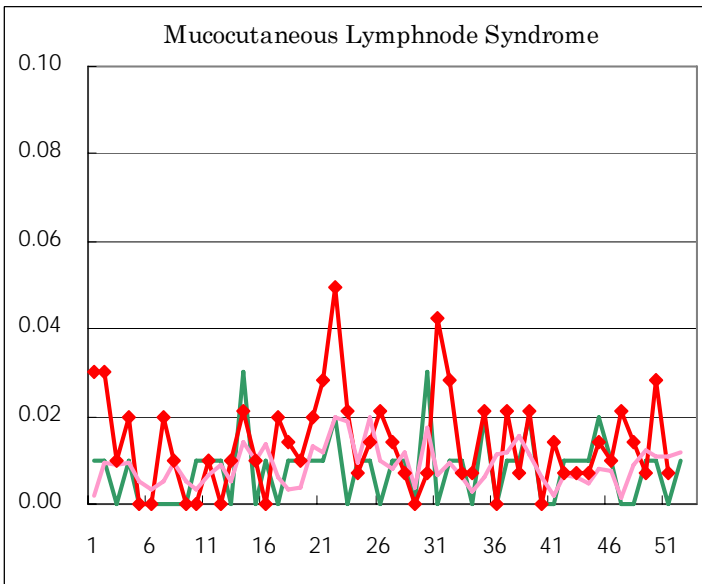
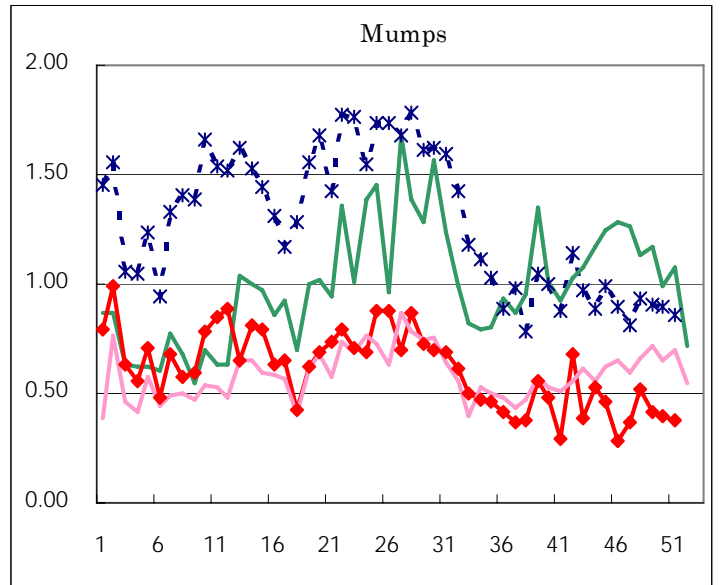
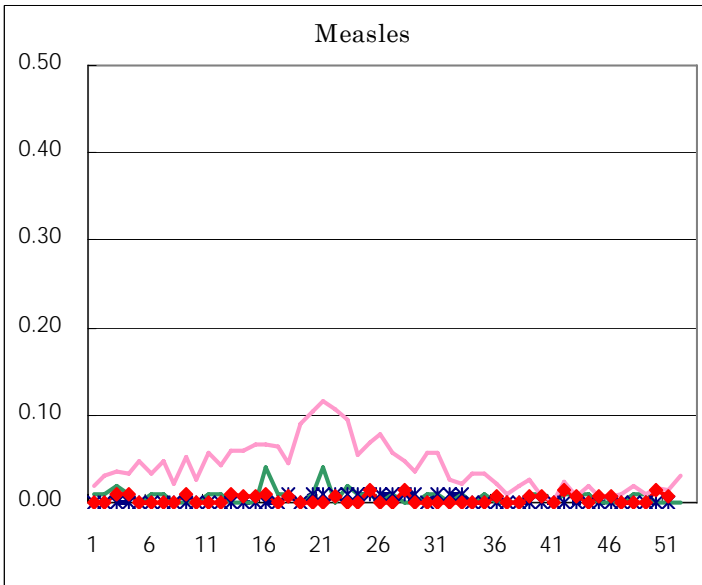
Diseases	Sex	2006				Total
		48th	49th	50th	51st	
Respiratory syncytial virus infection	M	27	36	64	68	195
	F	14	28	43	55	140
Influenza	M		1	2		3
	F	1	2		2	5
Pharyngoconjunctival fever	M	21	14	32	34	101
	F	16	20	22	32	90
Group A streptococcal pharyngitis	M	119	97	138	116	470
	F	81	90	142	119	432
Infectious gastroenteritis	M	1,562	1,952	1,856	1,323	6,693
	F	1,546	1,944	1,913	1,287	6,690
Chickenpox	M	69	86	147	132	434
	F	84	84	141	118	427
Hand, foot, and mouth disease	M	39	33	23	23	118
	F	26	21	24	14	85
Erythema infectiosum	M	24	28	20	26	98
	F	30	30	25	34	119
Exanthem subitum	M	45	34	34	34	147
	F	35	30	25	33	123
Pertussis	M	1				1
	F			1	1	2
Rubella	M					
	F					
Herpangina	M	1	6	3	7	17
	F	5	2	2	1	10
Measles	M			2	1	3
	F					
Mumps	M	37	33	32	29	131
	F	37	26	24	24	111
Cold with exanthems by Enterovirus	M	7	6	2	2	17
	F	4	7	5	3	19
Mucocutaneous Lymphnode Syndrome	M	2	1	3	1	7
	F			1		1
Acute hemorrhagic conjunctivitis	M					
	F					
Epidemic keratoconjunctivitis	M	8	9	2	8	27
	F	7	4	5	6	22
Bacterial meningitis	M					
	F			1	1	2
Aseptic meningitis	M	2	1			3
	F	1			1	2
Mycoplasma pneumonia	M	2	3	3	8	16
	F	4		1	1	6
Chlamydial pneumonia (excluding psittacosis)	M	1				1
	F		1			1
Measles in adults	M	1			1	2
	F					

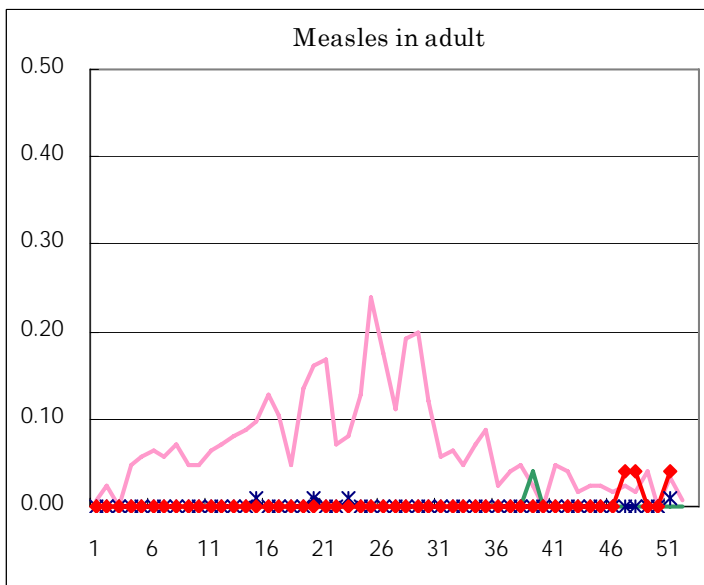
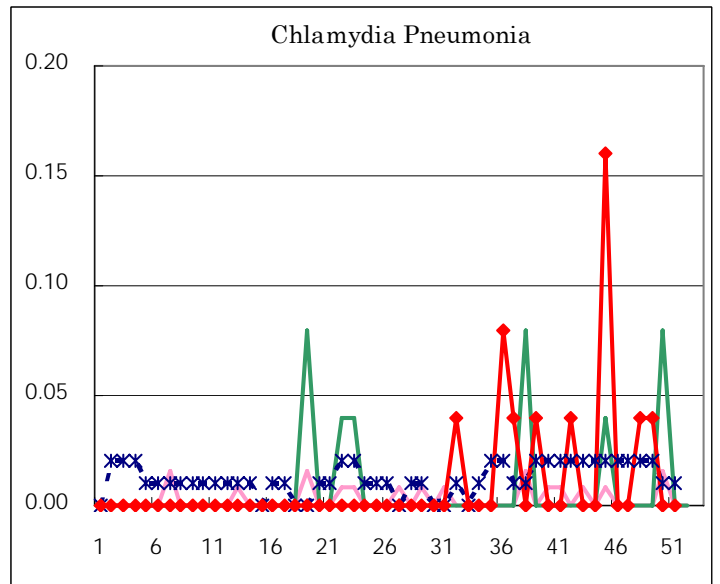
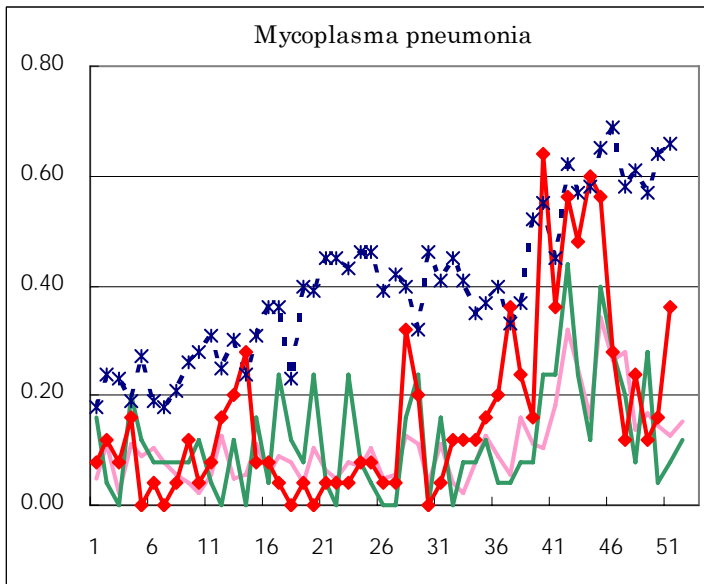
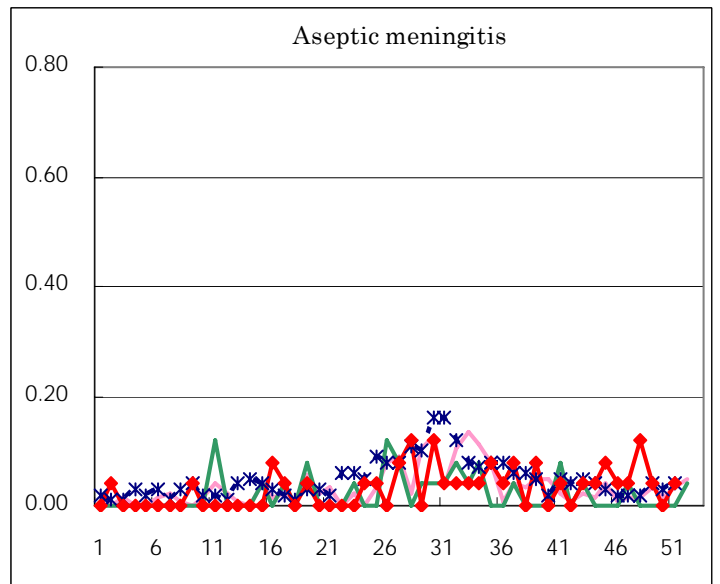
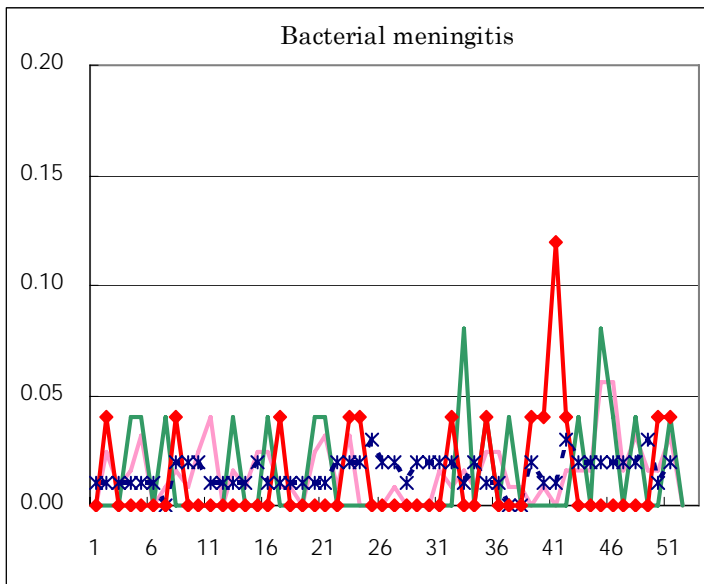
( Blank means 0. )

# Disease Trend Graph (weekly reported cases per fixed-point in comparison)









Tokyo Metropolitan Government  
**Infectious Disease Surveillance Center**