

INFECTIOUS DISEASES WEEKLY REPORT

TOKYO IDWR

Tokyo Metropolitan Institute of Public Health

9 January 2007 / Number 52

- Number of patients with the diseases required notifying all the cases
- Number of patients with the diseases to be reported by the sentinel clinics and hospitals
- Disease trend graph (weekly reported cases per sentinel in comparison)

Surveillance System in Tokyo, Japan

The infectious diseases which all physicians must report

All physicians must report to health centers the incidence of the diseases which are shown at page one. Health centers electronically report the individual cases to Tokyo Metropolitan Infectious Disease Surveillance Center.

The infectious diseases required to be reported by the sentinels

The numbers of patients who visit the sentinel clinics or hospitals during a week are reported to health centers in Tokyo. And they electronically report the numbers to Tokyo Metropolitan Infectious Disease Surveillance Center. We have about 260 sentinel clinics and hospitals in Tokyo.

1st Week is early January and 52rd Week is end of December.

Tokyo Metropolitan Infectious Disease Surveillance Center
Tokyo Metropolitan Institute of Public Health

TEL:81-3-3363-3213 FAX:81-3-5332-7365
e-mail:idsc@tokyo-eiken.go.jp
URL:idsc.tokyo-eiken.go.jp/

Number of patients with the diseases which all physicians must report

Category	Diseases	Tokyo				Japan		
		49th	50th	51st	52nd	Total	52nd	Total
I	Ebola hemorrhagic fever							
	Crimean-Congo hemorrhagic fever							
	Severe acute respiratory syndrome							
	Smallpox							
	Plague							
	Marburg disease							
	Lassa fever							
II	Acute poliomyelitis							
	Cholera					8		47
	Shigellosis	1	2		3	67	6	483
	Diphtheria							
	Typhoid fever			1	1	19	1	72
	Paratyphoid fever				1	12		24
III	Enterohemorrhagic <i>Escherichia coli</i> infection	1	2		5	268	26	3910
IV	Hepatitis E					4	1	70
	West Nile fever							
	Hepatitis A	1	1			28	1	316
	Echinococcosis					1		20
	Yellow fever							
	Psittacosis					4		22
	Relapsing fever							
	Q fever							2
	Rabies							2
	High pathogenic avian influenza							
	Coccidioidomycosis					1		2
	Monkeypox							
	Hemorrhagic fever with renal syndrome							
	Anthrax							
	Scrub typhus (Tsumugamushi disease)				1	1	10	397
	Dengue fever			1	1	18	2	57
	Nipah virus infection							
	Japanese spotted fever							45
	Japanese encephalitis							7
	Hantavirus pulmonary syndrome							
	B virus disease							
Brucellosis					1		5	
Epidemic typhus								
Botulism							2	
Malaria				1	16	1	61	
Tularemia								
Lyme disease					2		13	
Lyssavirus infection								
Legionellosis	1	1	3	2	62	7	508	
Leptospirosis					4		24	
V	Amebiasis	3	3	1	4	182	14	738
	Acute viral hepatitis(excluding Hepatitis A,Hepatitis E)					34	1	275
	Acute encephalitis					6	1	160
	Cryptosporidiosis					5		14
	Creutzfeldt-Jakob Disease		2	1		22	4	177
	Sever invasive streptococcal infections				1	14		107
	Acquired immunodeficiency syndrome	13	9	5	4	453	11	1301
	Giardiasis		1			28	2	87
	Meningococcal meningitis					1		14
	Congenital rubella syndrome							
	Syphilis	1	3	1	3	131	4	625
	Tetanus			1		8		115
	Vancomycin-resistant <i>Staphylococcus aureus</i> infection							
	Vancomycin-resistant <i>enterococcus</i> infection				2	20	3	79

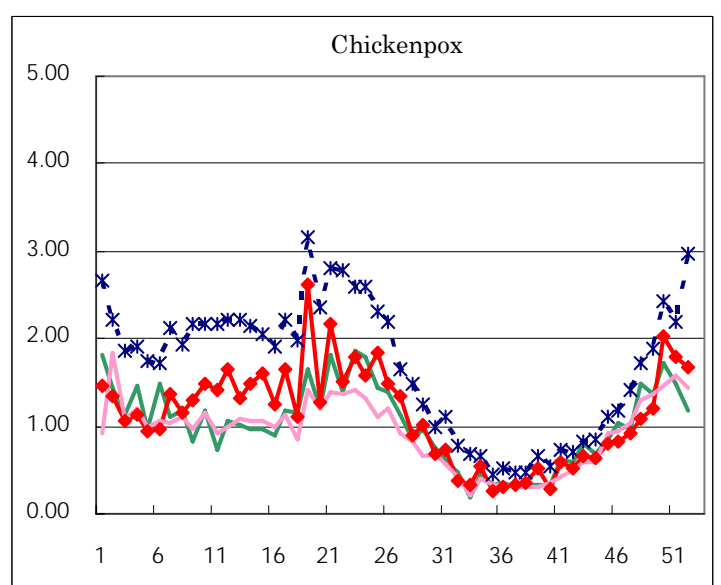
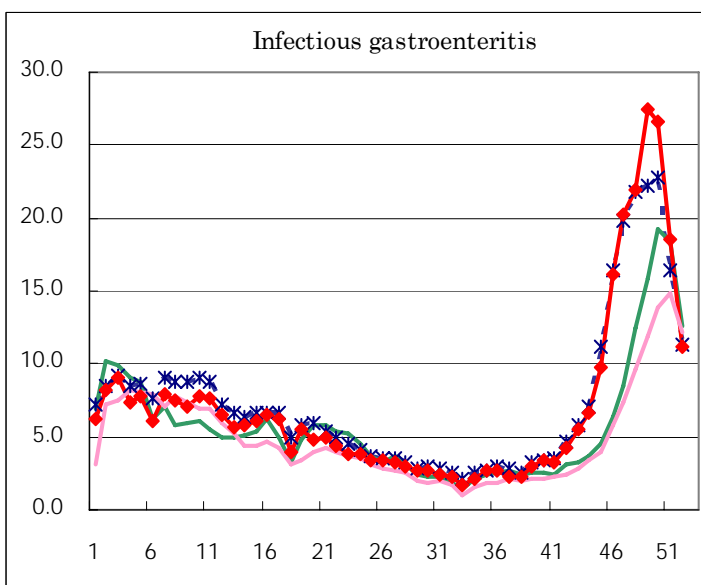
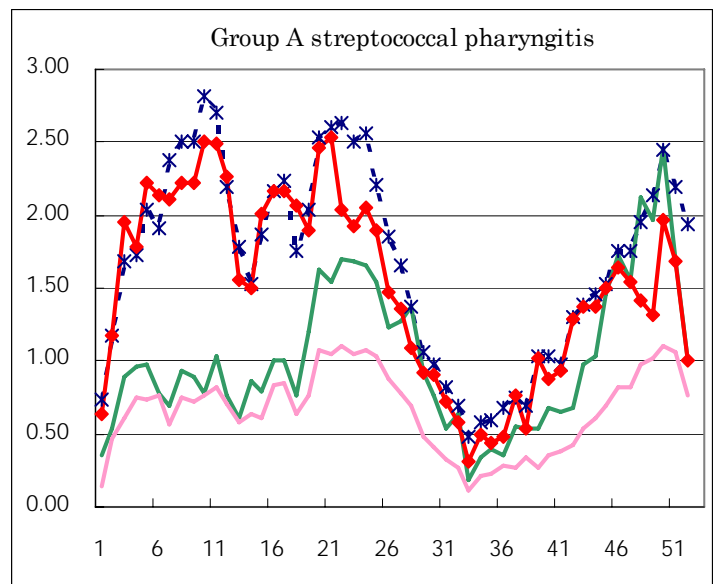
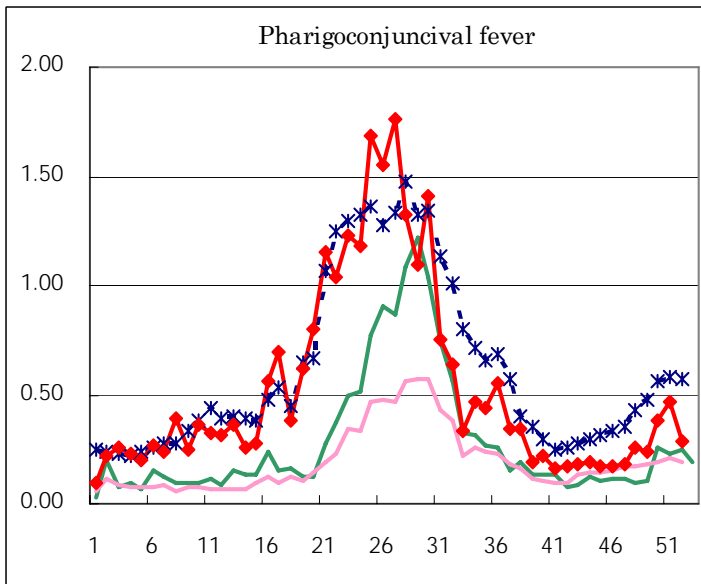
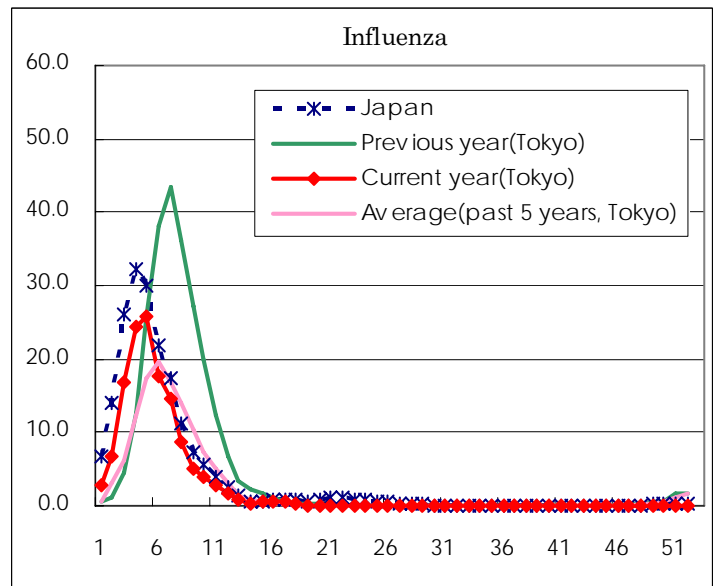
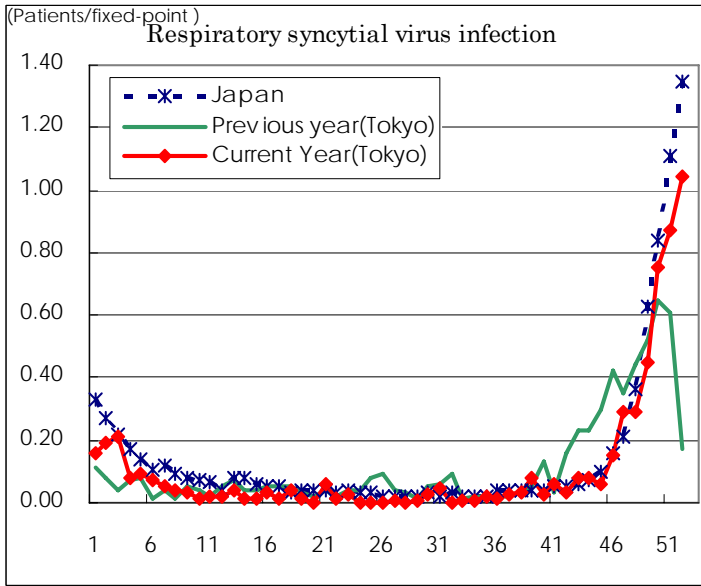
(Blank means 0.)

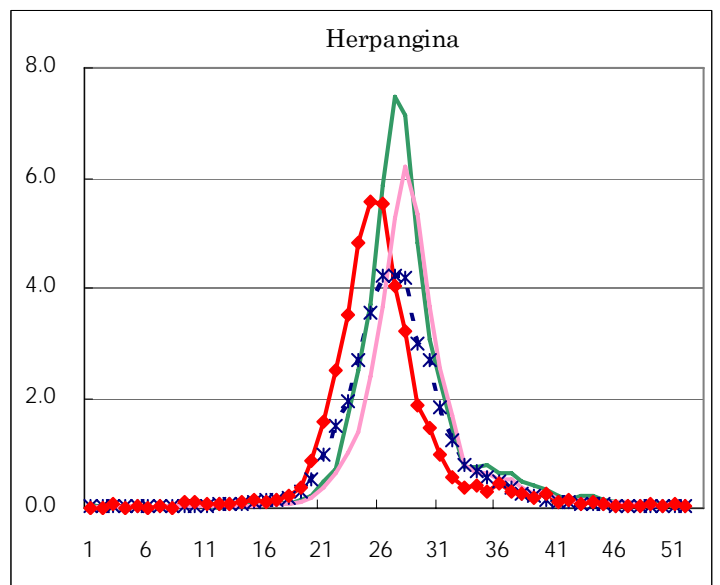
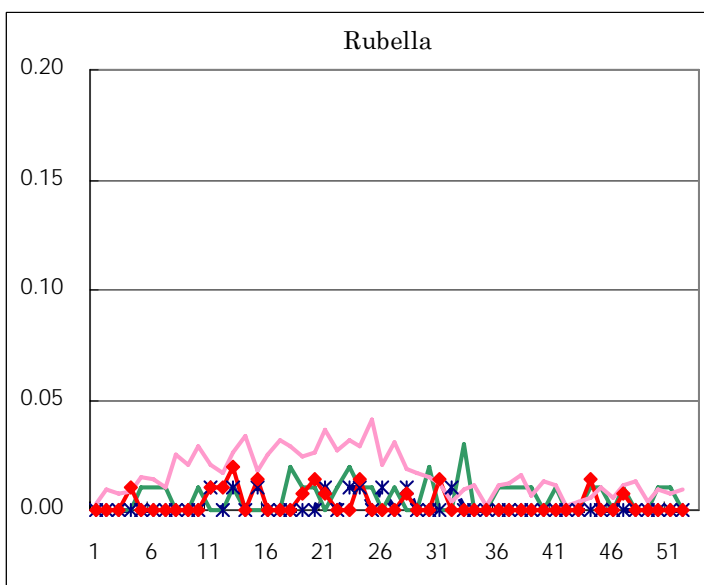
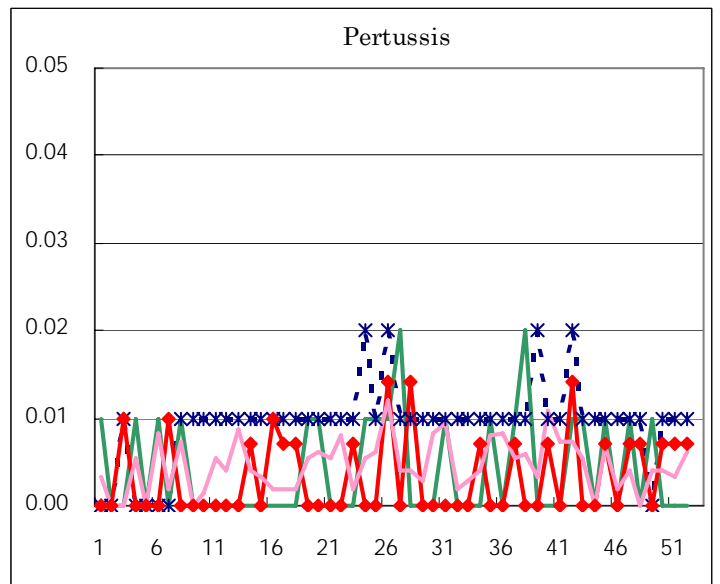
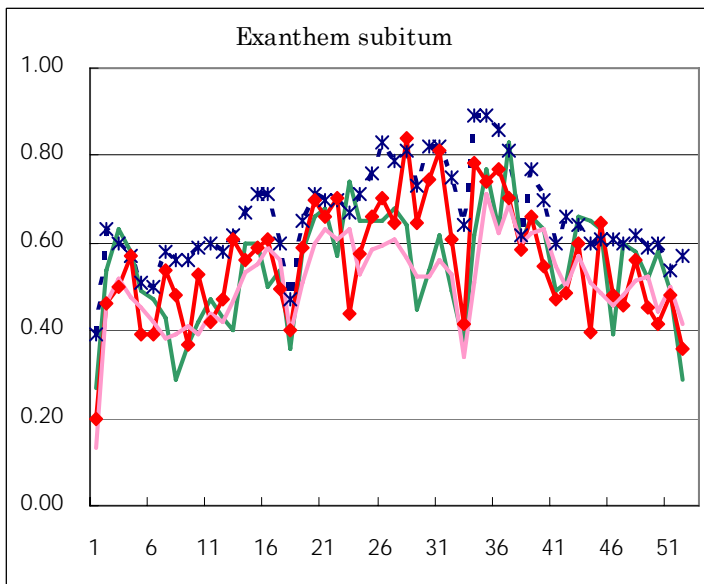
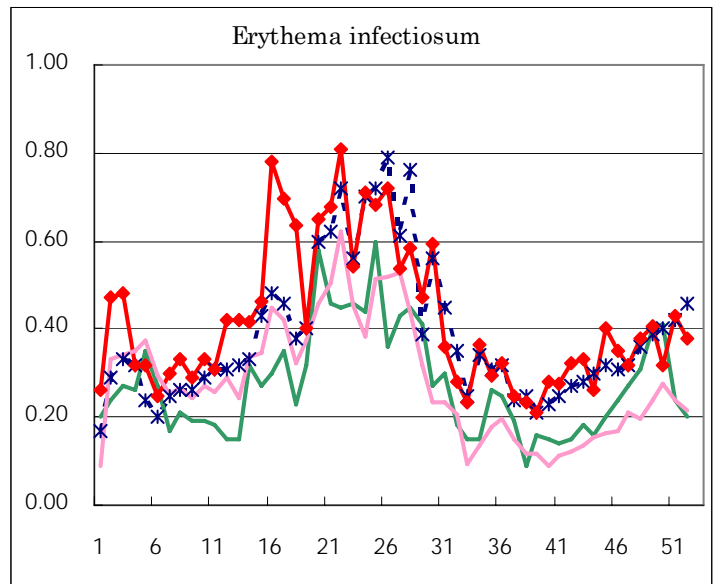
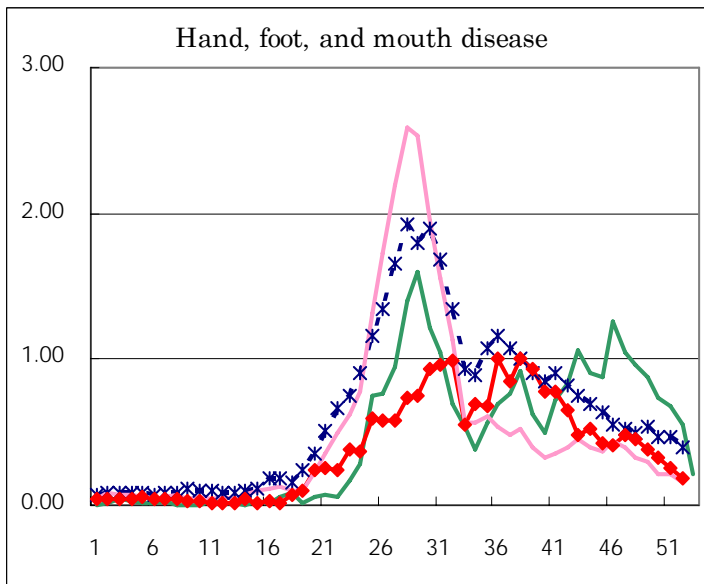
Number of patients with the diseases to be reported
by the designated clinics and hospitals

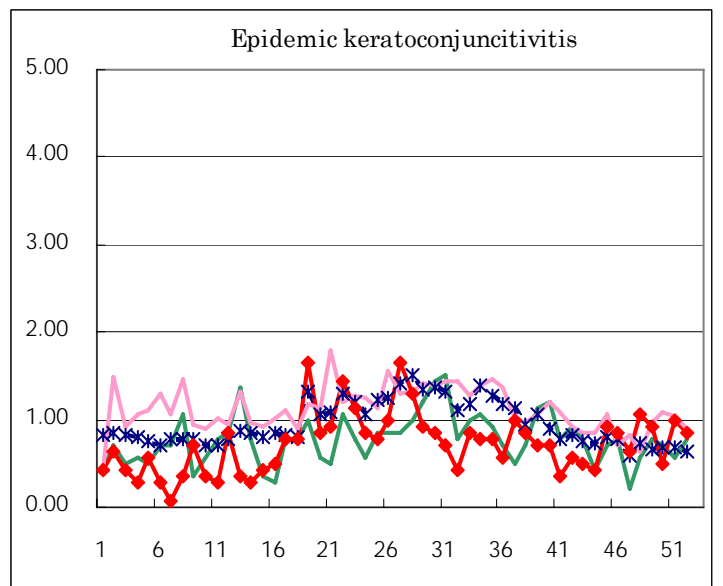
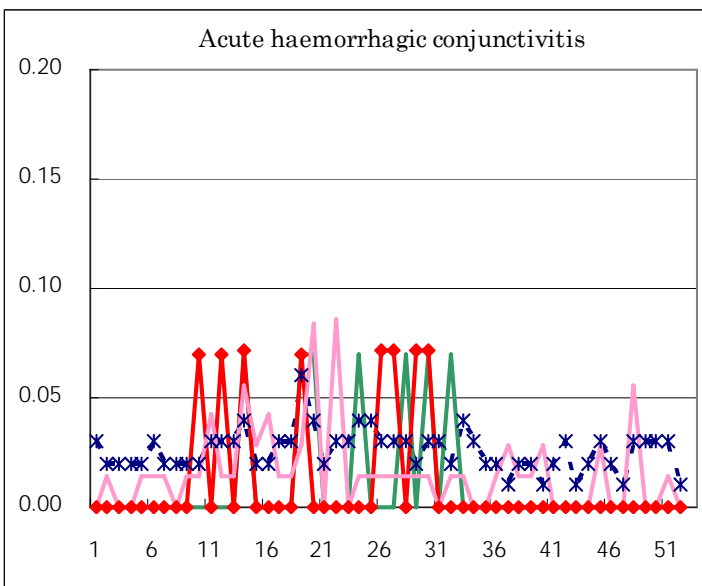
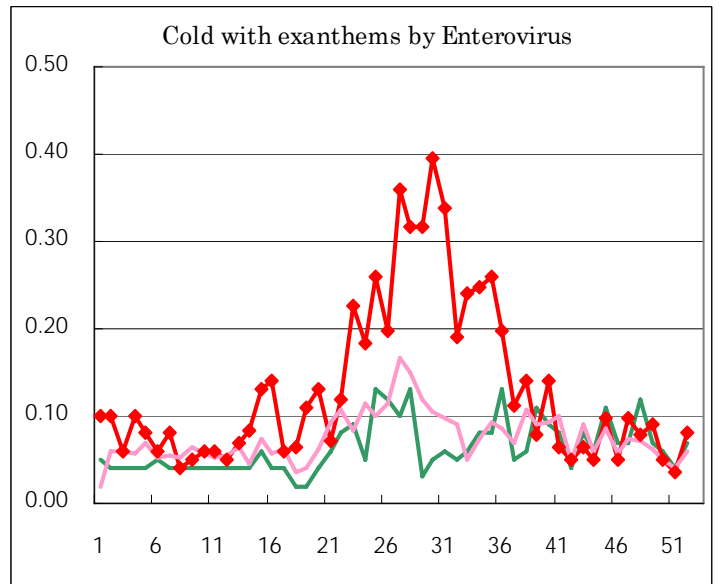
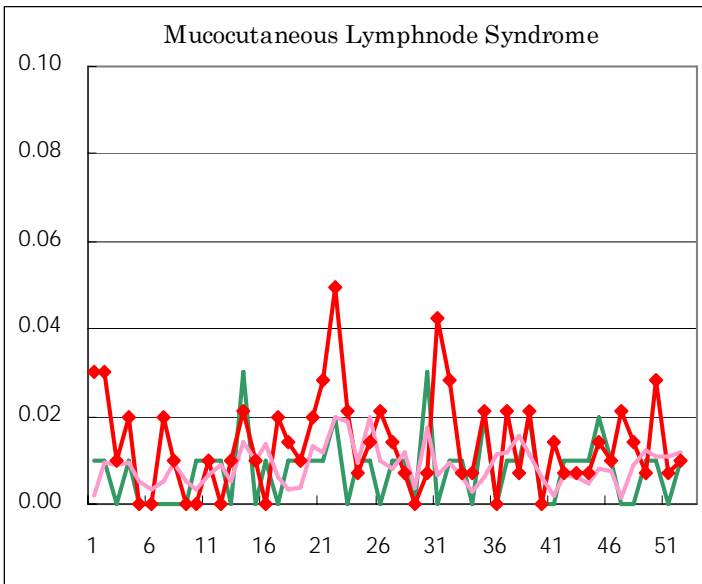
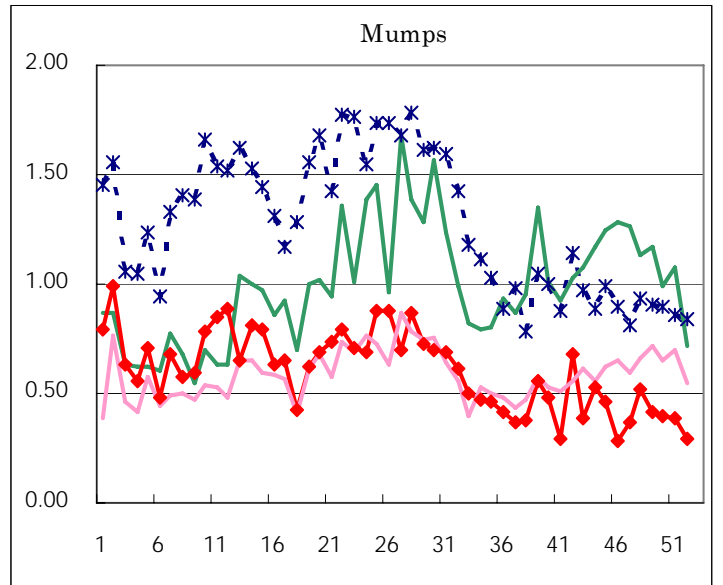
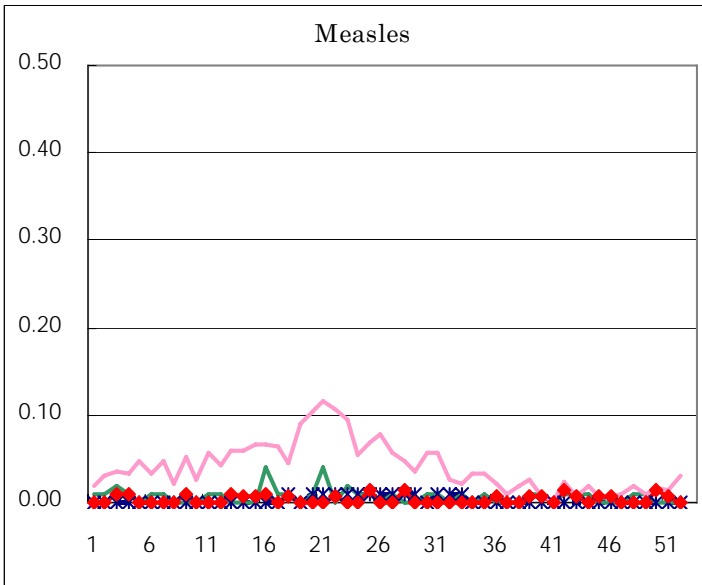
Diseases	Sex	2006				Total
		49th	50th	51st	52nd	
Respiratory syncytial virus infection	M	36	64	68	79	247
	F	28	43	55	69	195
Influenza	M	1	2		2	5
	F	2		2	9	13
Pharygoconjunctival fever	M	14	32	34	21	101
	F	20	22	32	20	94
Group A streptococcal pharyngitis	M	97	138	118	64	417
	F	90	142	120	79	431
Infectious gastroenteritis	M	1,952	1,856	1,330	776	5,914
	F	1,944	1,913	1,296	817	5,970
Chickenpox	M	86	147	135	124	492
	F	84	141	120	115	460
Hand, foot, and mouth disease	M	33	23	23	14	93
	F	21	24	14	13	72
Erythema infectiosum	M	28	20	26	24	98
	F	30	25	35	30	120
Exanthem subitum	M	34	34	34	36	138
	F	30	25	34	15	104
Pertussis	M					
	F		1	1	1	3
Rubella	M					
	F					
Herpangina	M	6	3	7	3	19
	F	2	2	1	2	7
Measles	M		2	1		3
	F					
Mumps	M	33	32	31	22	118
	F	26	24	25	20	95
Cold with exanthems by Enterovirus	M	6	2	2	6	16
	F	7	5	3	5	20
Mucocutaneous Lymphnode Syndrome	M	1	3	1		5
	F		1		1	2
Acute hemorrhagic conjunctivitis	M					
	F					
Epidemic keratoconjunctivitis	M	9	2	8	8	27
	F	4	5	6	4	19
Bacterial meningitis	M					
	F		1	1		2
Aseptic meningitis	M	1				1
	F			1		1
Mycoplasma pneumonia	M	3	3	8	1	15
	F		1	1	3	5
Chlamydial pneumonia (excluding psittacosis)	M				1	1
	F	1				1
Measles in adults	M			1		1
	F					

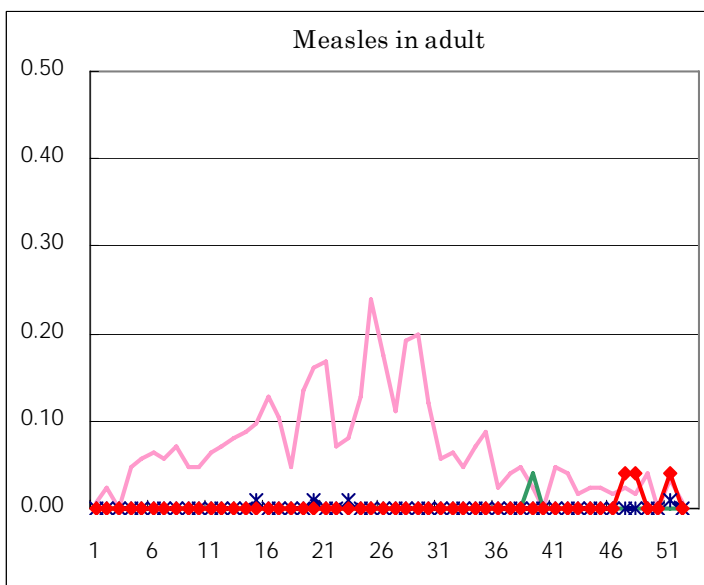
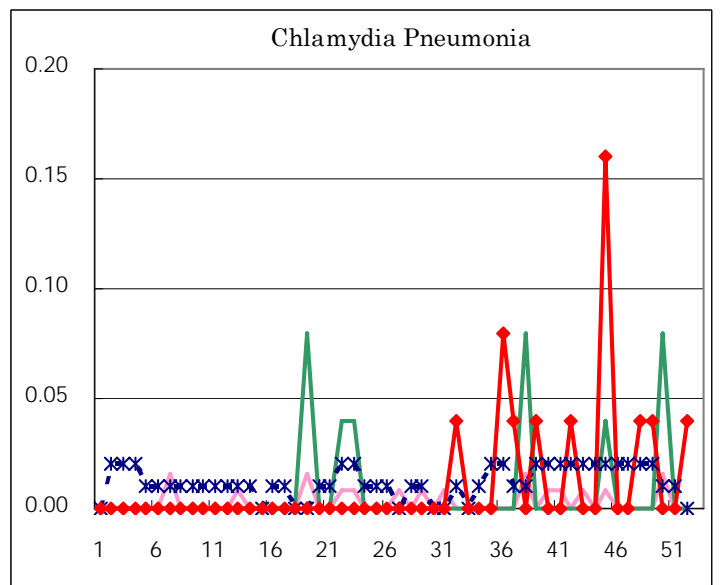
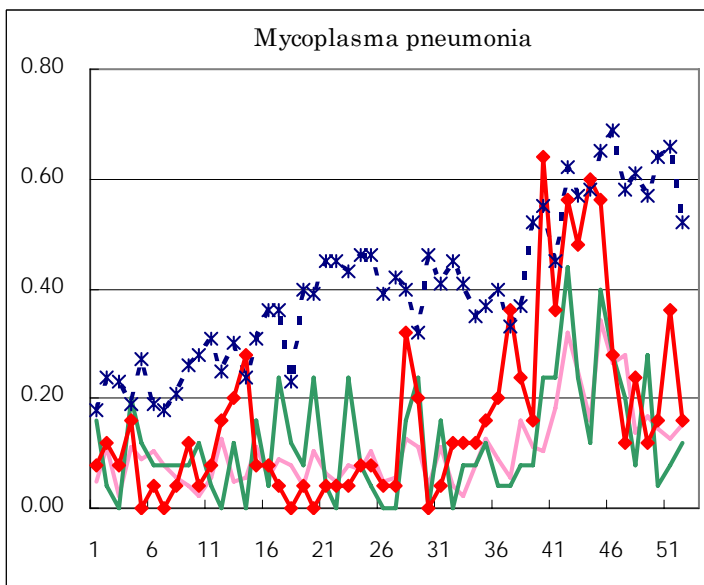
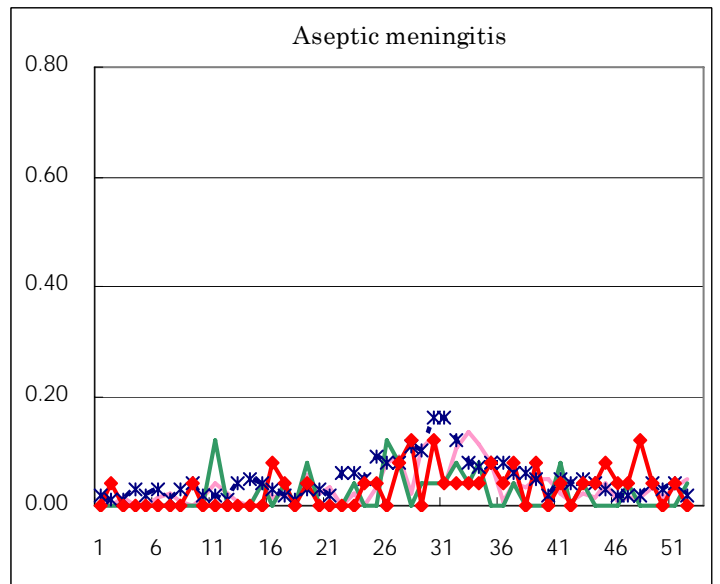
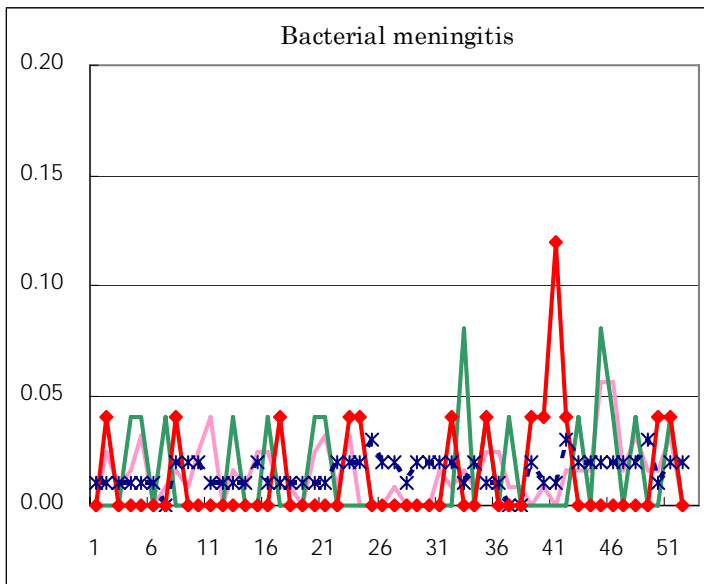
(Blank means 0.)

Disease Trend Graph (weekly reported cases per fixed-point in comparison)









Tokyo Metropolitan Government
Infectious Disease Surveillance Center