

INFECTIOUS DISEASES WEEKLY REPORT

TOKYO IDWR

Tokyo Metropolitan Institute of Public Health

20 February 2007 / Number 6

- Number of patients with the diseases required notifying all the cases
- Number of patients with the diseases to be reported by the sentinel clinics and hospitals
- Disease trend graph (weekly reported cases per sentinel in comparison)

Surveillance System in Tokyo, Japan

The infectious diseases which all physicians must report

All physicians must report to health centers the incidence of the diseases which are shown at page one. Health centers electronically report the individual cases to Tokyo Metropolitan Infectious Disease Surveillance Center.

The infectious diseases required to be reported by the sentinels

The numbers of patients who visit the sentinel clinics or hospitals during a week are reported to health centers in Tokyo. And they electronically report the numbers to Tokyo Metropolitan Infectious Disease Surveillance Center. We have about 260 sentinel clinics and hospitals in Tokyo.

1st Week is early January and 52rd Week is end of December.

Tokyo Metropolitan Infectious Disease Surveillance Center
Tokyo Metropolitan Institute of Public Health

TEL:81-3-3363-3213 FAX:81-3-5332-7365
e-mail:idsc@tokyo-eiken.go.jp
URL:idsc.tokyo-eiken.go.jp/

Number of patients with the diseases which all physicians must report

Category	Diseases	Tokyo				Japan		
		3rd	4th	5th	6th	Total	6th	Total
I	Ebola hemorrhagic fever							
	Crimean-Congo hemorrhagic fever							
	Severe acute respiratory syndrome							
	Smallpox							
	Plague							
	Marburg disease							
	Lassa fever							
II	Acute poliomyelitis							
	Cholera							2
	Shigellosis	2	1	1	2	10	6	70
	Diphtheria							
	Typhoid fever							3
	Paratyphoid fever					1	1	3
III	Enterohemorrhagic <i>Escherichia coli</i> infection	2			1	3	18	82
IV	Hepatitis E		1			1		4
	West Nile fever							
	Hepatitis A		1		2	3	2	16
	Echinococcosis				1	1		1
	Yellow fever							
	Psittacosis							1
	Relapsing fever							
	Q fever							3
	Rabies							
	High pathogenic avian influenza							
	Coccidioidomycosis				1	1		
	Monkeypox							
	Hemorrhagic fever with renal syndrome							
	Anthrax							
	Scrub typhus (Tsutsugamushi disease)	1	1			2		33
	Dengue fever						1	4
	Nipah virus infection							
	Japanese spotted fever							
	Japanese encephalitis							
	Hantavirus pulmonary syndrome							
	B virus disease							
Brucellosis								
Epidemic typhus								
Botulism							1	
Malaria				1	2	1	1	
Tularemia								
Lyme disease								
Lyssavirus infection								
Legionellosis	2				2	2	40	
Leptospirosis							1	
V	Amebiasis	4	4	2	1	19	3	74
	Acute viral hepatitis(excluding Hepatitis A,Hepatitis E)	1		1	4	6	1	16
	Acute encephalitis						4	20
	Cryptosporidiosis							1
	Creutzfeldt-Jakob Disease						2	13
	Sever invasive streptococcal infections						2	16
	Acquired immunodeficiency syndrome	9	9	11	12	52	17	121
	Giardiasis	1		1	1	3		4
	Meningococcal meningitis							1
	Congenital rubella syndrome							
	Syphilis	1		2		7	2	39
	Tetanus						1	4
	Vancomycin-resistant <i>Staphylococcus aureus</i> infection							
	Vancomycin-resistant <i>enterococcus</i> infection	2			1	3	2	11

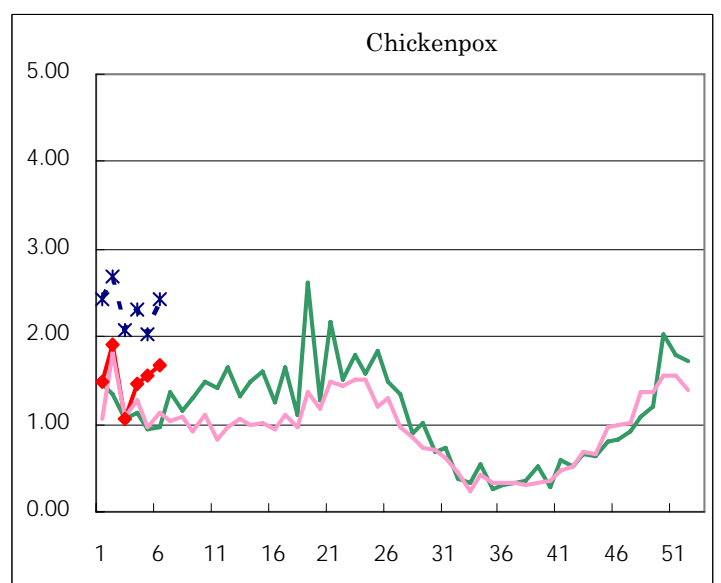
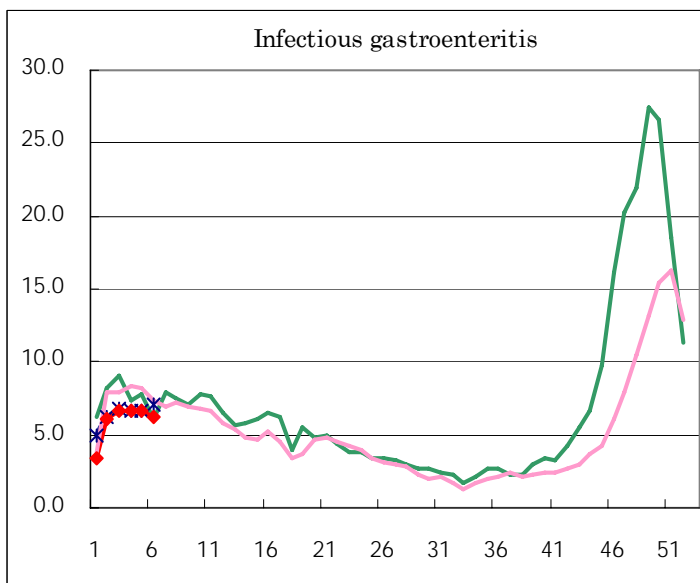
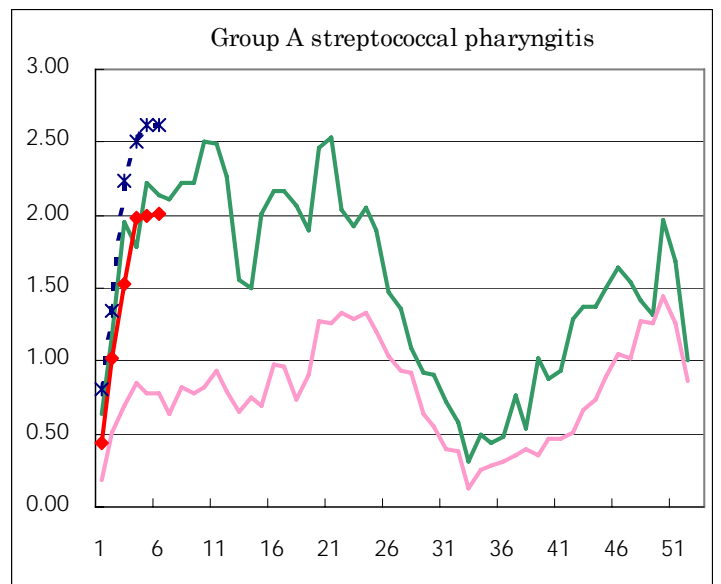
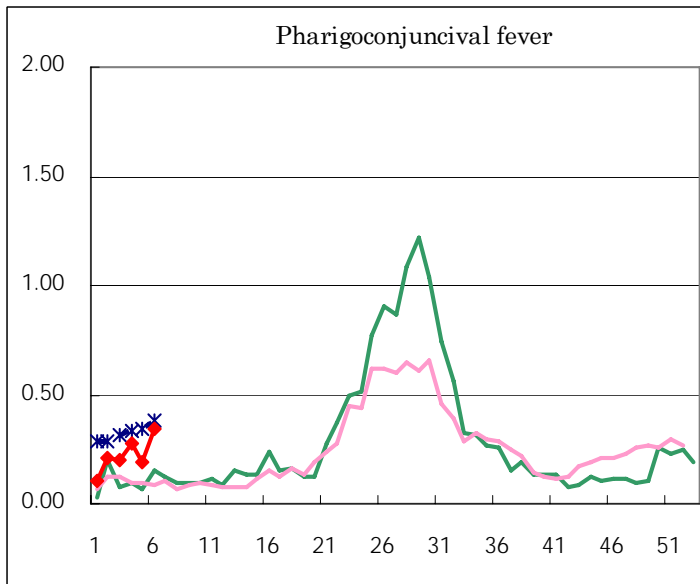
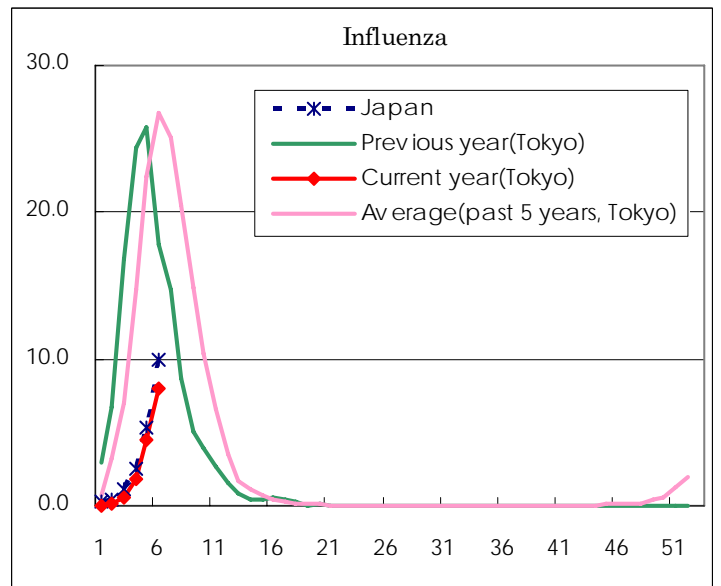
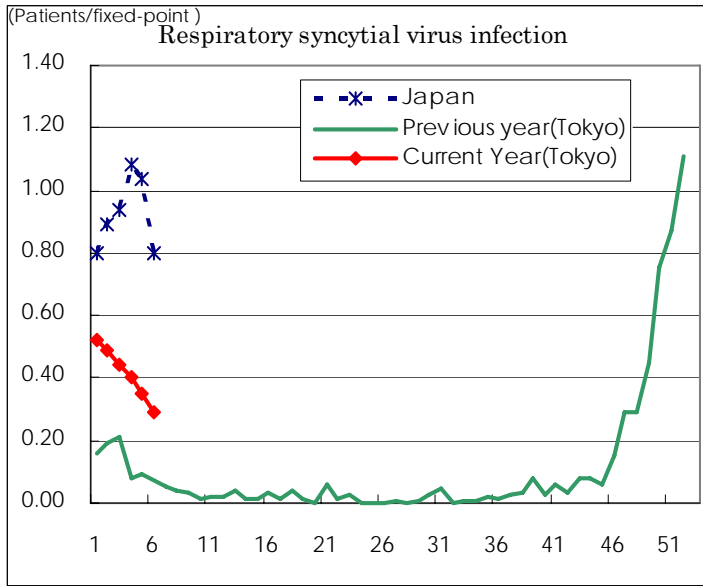
(Blank means 0.)

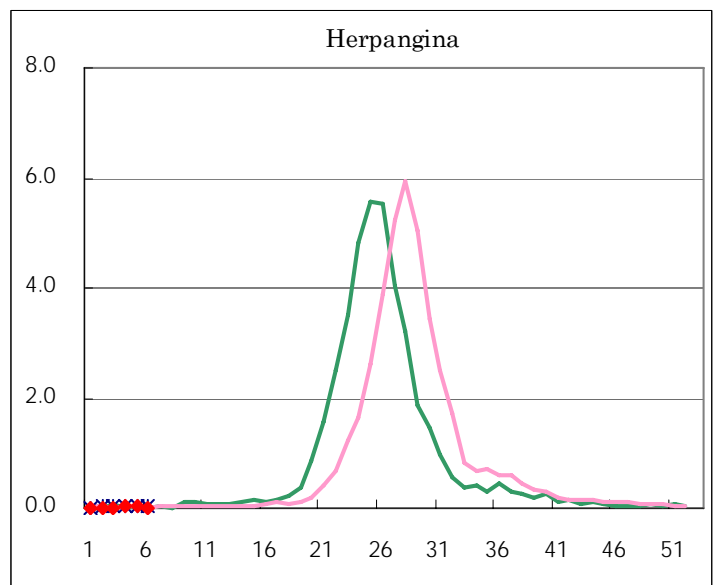
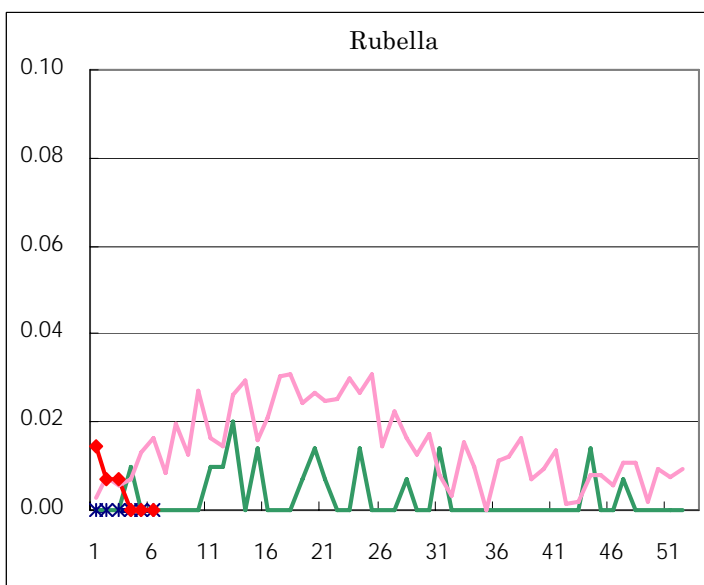
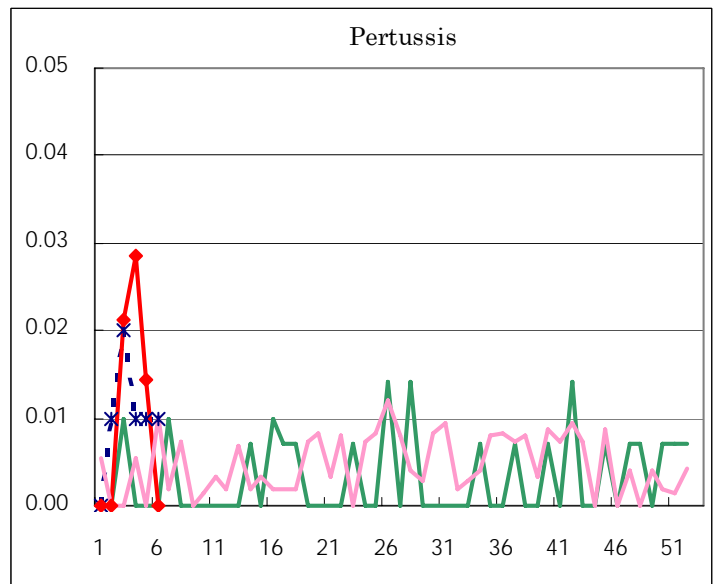
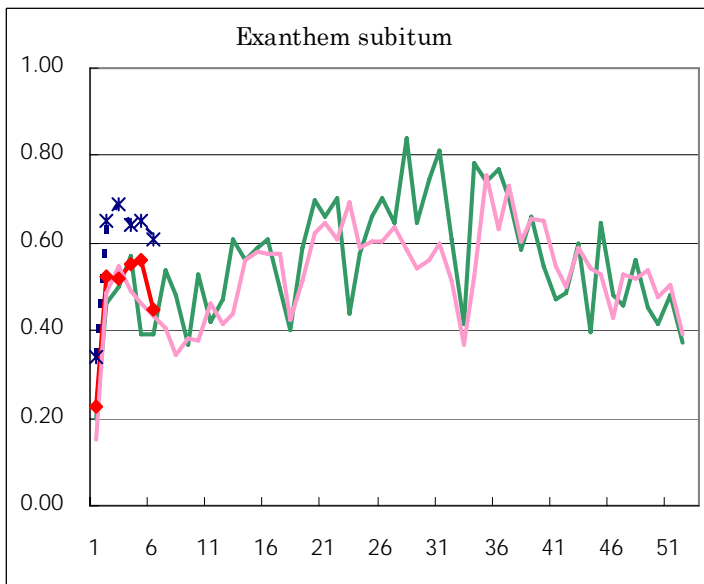
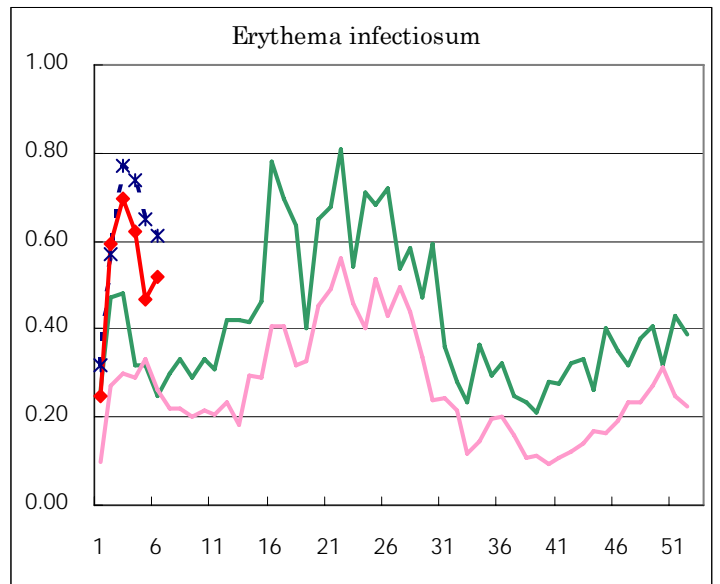
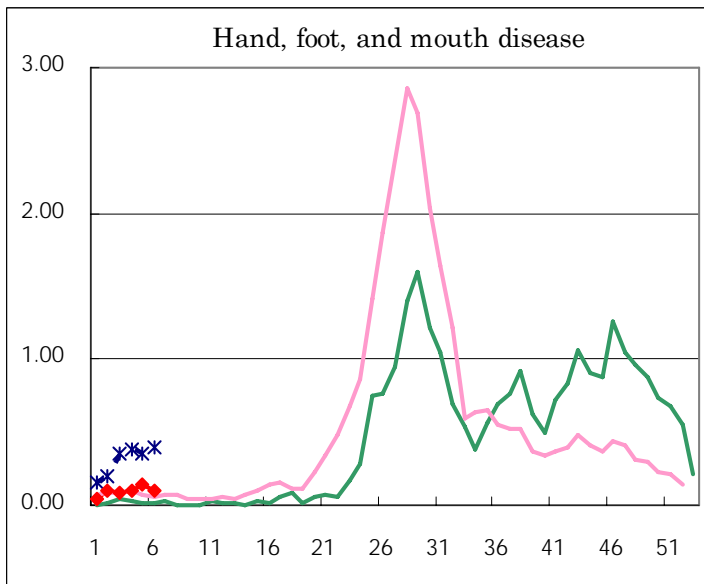
Number of patients with the diseases to be reported
by the designated clinics and hospitals

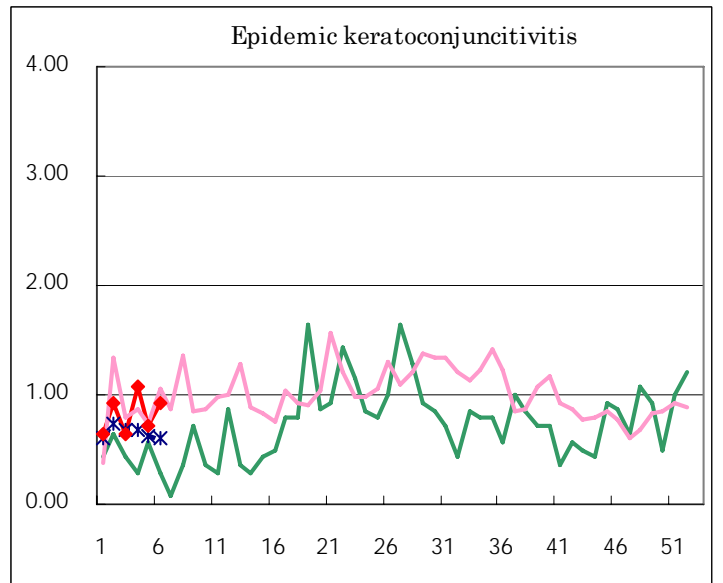
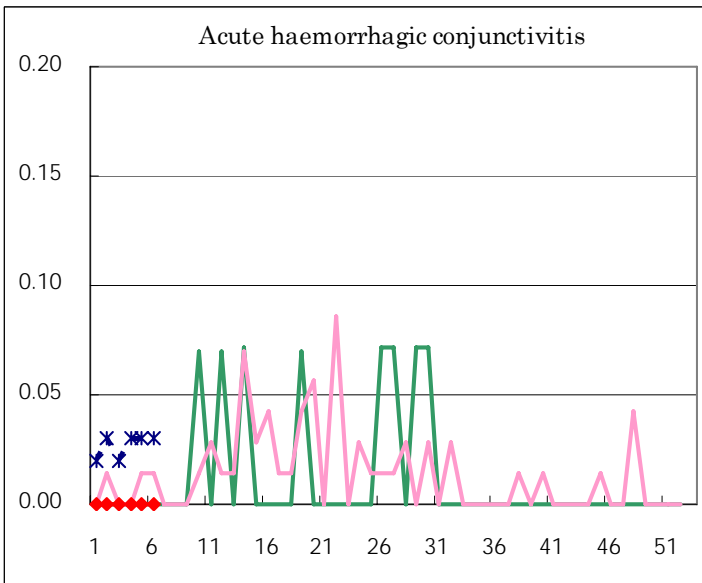
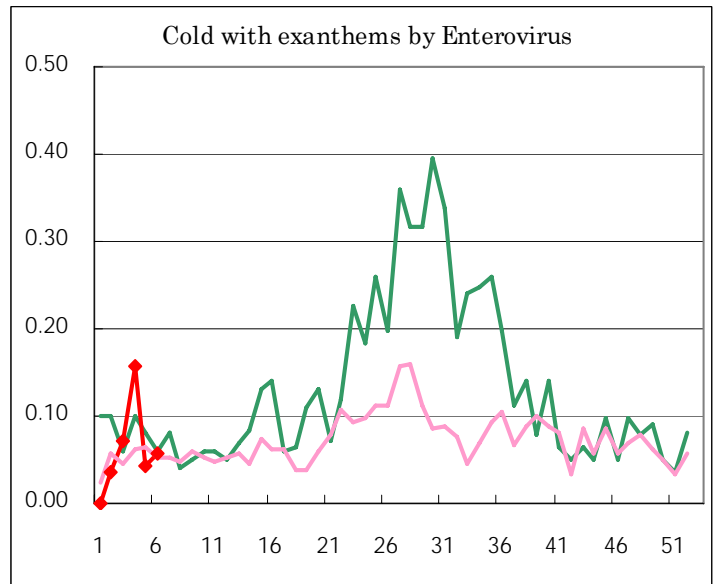
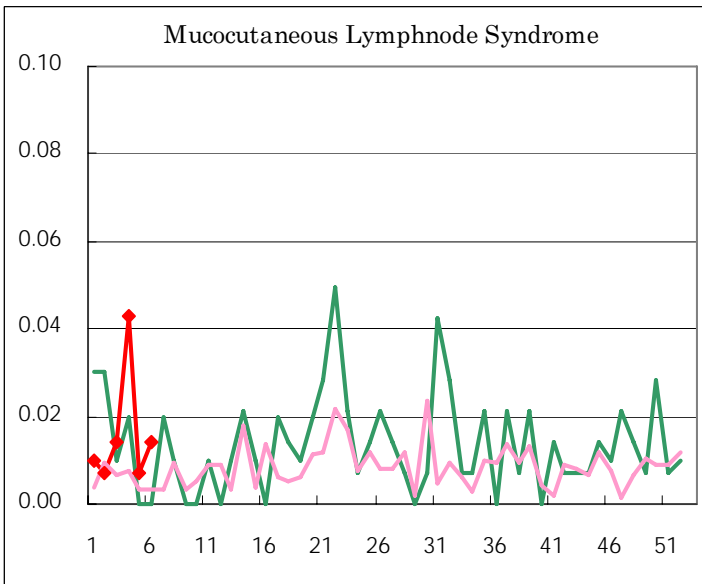
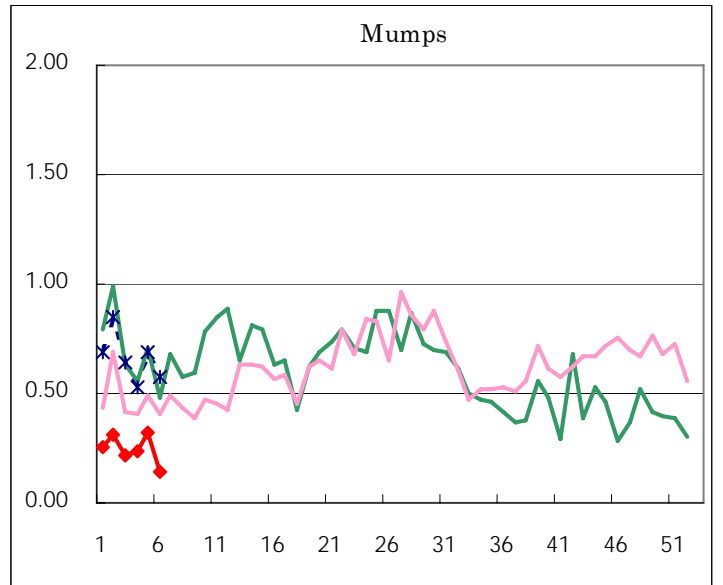
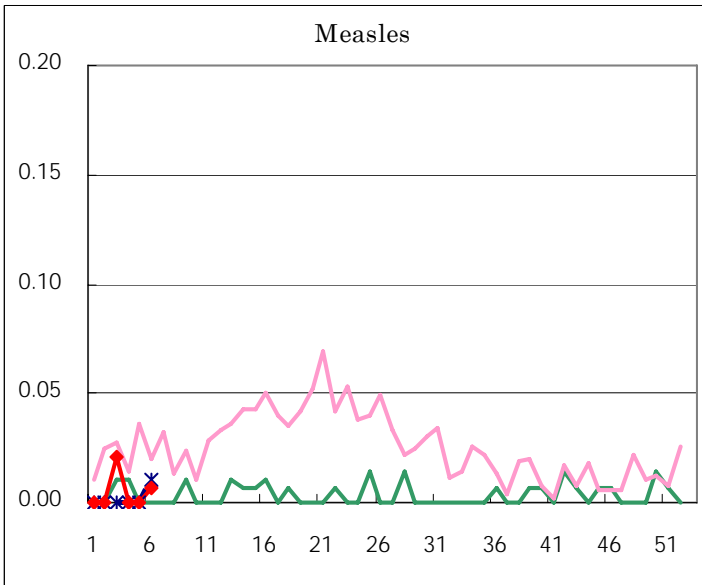
Diseases	Sex	2006				Total
		3rd	4th	5th	6th	
Respiratory syncytial virus infection	M	35	30	21	24	110
	F	27	26	28	17	98
Influenza	M	86	251	671	1,159	2,167
	F	80	247	573	1,085	1,985
Pharygoconjunctival fever	M	13	18	12	27	70
	F	15	21	15	21	72
Group A streptococcal pharyngitis	M	113	139	137	150	539
	F	102	138	140	134	514
Infectious gastroenteritis	M	472	480	445	431	1,828
	F	473	447	472	439	1,831
Chickenpox	M	80	98	117	126	421
	F	68	106	100	111	385
Hand, foot, and mouth disease	M	5	5	10	7	27
	F	7	8	10	7	32
Erythema infectiosum	M	53	41	29	36	159
	F	45	46	36	37	164
Exanthem subitum	M	42	33	32	33	140
	F	31	44	46	30	151
Pertussis	M	1	3	1		5
	F	2	1	1		4
Rubella	M					
	F	1				1
Herpangina	M	2	2	1	2	7
	F		2	3		5
Measles	M					
	F	3			1	4
Mumps	M	16	20	21	14	71
	F	15	13	23	6	57
Cold with exanthems by Enterovirus	M	6	11	2	5	24
	F	4	11	4	3	22
Mucocutaneous Lymphnode Syndrome	M	2	4		1	7
	F		2	1	1	4
Acute hemorrhagic conjunctivitis	M					
	F					
Epidemic keratoconjunctivitis	M	6	11	6	8	31
	F	3	4	4	5	16
Bacterial meningitis	M	1				1
	F		1			1
Aseptic meningitis	M			1		1
	F					
Mycoplasma pneumonia	M	3	1	4	1	9
	F	1	1	3		5
Chlamydial pneumonia (excluding psittacosis)	M					
	F					
Measles in adults	M				1	1
	F					

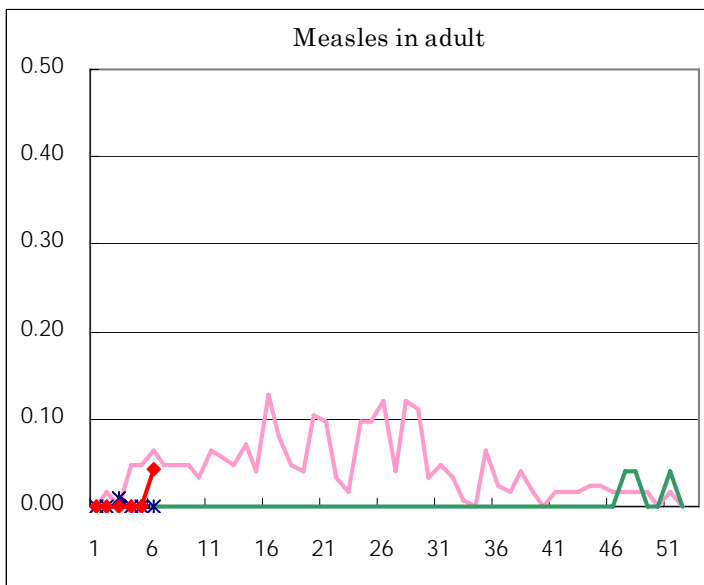
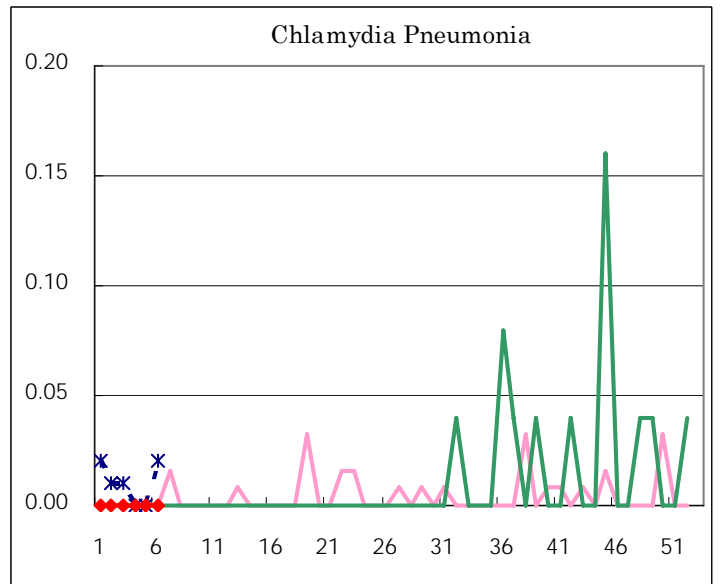
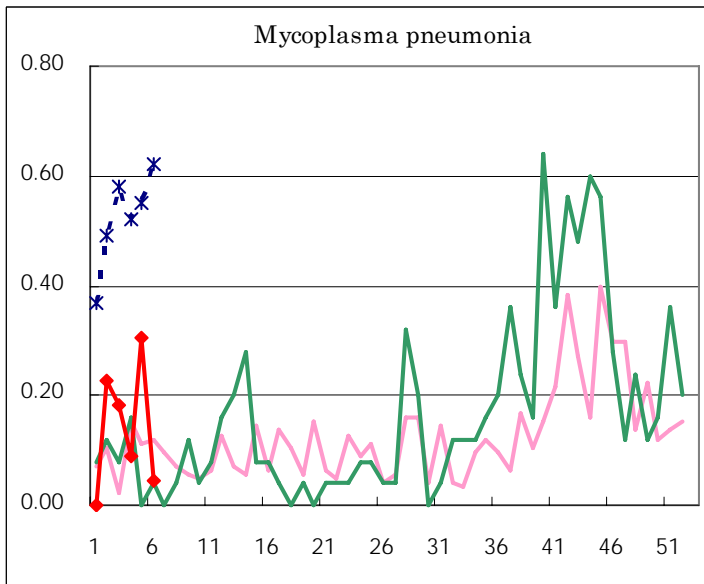
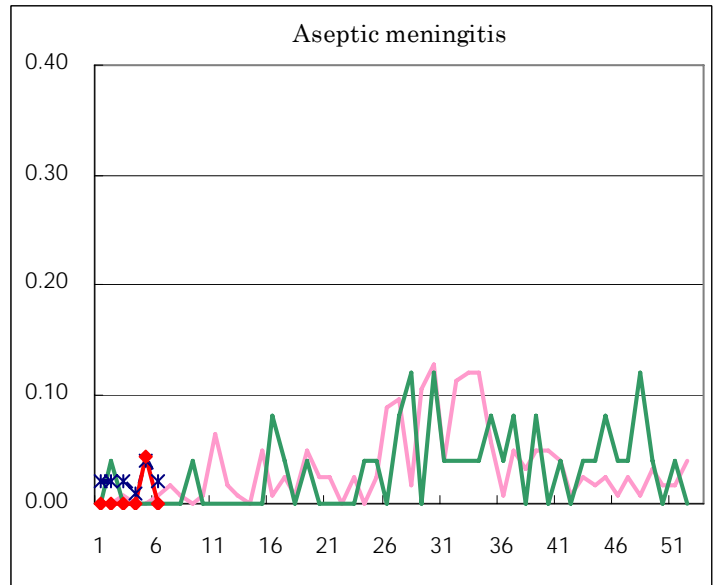
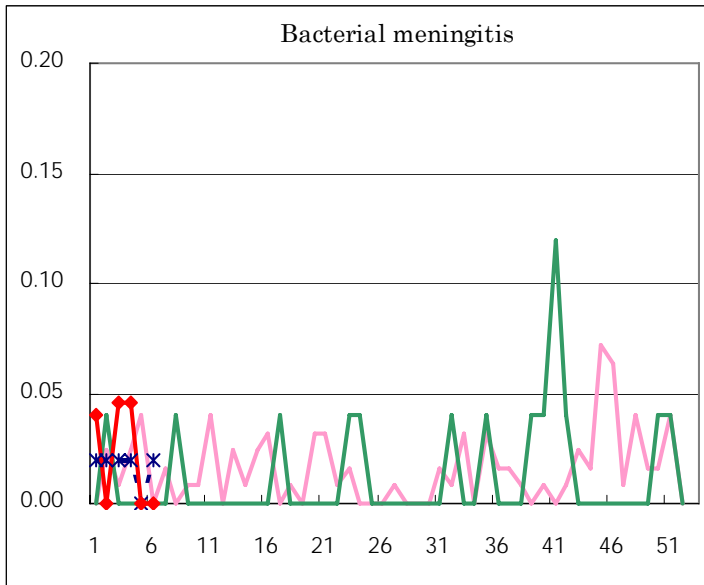
(Blank means 0.)

Disease Trend Graph (weekly reported cases per fixed-point in comparison)









Tokyo Metropolitan Government
Infectious Disease Surveillance Center