

INFECTIOUS DISEASES WEEKLY REPORT

# TOKYO IDWR

Tokyo Metropolitan Institute of Public Health

27 February 2007 / Number 7

- Number of patients with the diseases required notifying all the cases
- Number of patients with the diseases to be reported by the sentinel clinics and hospitals
- Disease trend graph (weekly reported cases per sentinel in comparison)

## Surveillance System in Tokyo, Japan

### The infectious diseases which all physicians must report

All physicians must report to health centers the incidence of the diseases which are shown at page one. Health centers electronically report the individual cases to Tokyo Metropolitan Infectious Disease Surveillance Center.

### The infectious diseases required to be reported by the sentinels

The numbers of patients who visit the sentinel clinics or hospitals during a week are reported to health centers in Tokyo. And they electronically report the numbers to Tokyo Metropolitan Infectious Disease Surveillance Center. We have about 260 sentinel clinics and hospitals in Tokyo.

1<sup>st</sup> Week is early January and 52<sup>rd</sup> Week is end of December.

Tokyo Metropolitan Infectious Disease Surveillance Center  
Tokyo Metropolitan Institute of Public Health

TEL:81-3-3363-3213 FAX:81-3-5332-7365  
e-mail:[idsc@tokyo-eiken.go.jp](mailto:idsc@tokyo-eiken.go.jp)  
URL:[idsc.tokyo-eiken.go.jp/](http://idsc.tokyo-eiken.go.jp/)

## Number of patients with the diseases which all physicians must report

Category	Diseases	Tokyo					Japan	
		4th	5th	6th	7th	Total	7th	Total
I	Ebola hemorrhagic fever							
	Crimean-Congo hemorrhagic fever							
	Severe acute respiratory syndrome							
	Smallpox							
	Plague							
	Marburg disease							
	Lassa fever							
II	Acute poliomyelitis							
	Cholera							2
	Shigellosis	1	1	2	2	12	6	77
	Diphtheria							
	Typhoid fever							3
	Paratyphoid fever				1	2	1	4
III	Enterohemorrhagic <i>Escherichia coli</i> infection			1		3	11	95
IV	Hepatitis E	1				1	1	5
	West Nile fever							
	Hepatitis A	1		2	3	6	4	26
	Echinococcosis			1		1		2
	Yellow fever							
	Psittacosis							1
	Relapsing fever							
	Q fever							3
	Rabies							
	High pathogenic avian influenza							
	Coccidioidomycosis			1		1		1
	Monkeypox							
	Hemorrhagic fever with renal syndrome							
	Anthrax							
	Scrub typhus (Tsumugamushi disease)	1				2	1	35
	Dengue fever							4
	Nipah virus infection							
	Japanese spotted fever							
	Japanese encephalitis							
	Hantavirus pulmonary syndrome							
	B virus disease							
	Brucellosis							
	Epidemic typhus							
Botulism							1	
Malaria			1		2		2	
Tularemia								
Lyme disease								
Lyssavirus infection								
Legionellosis					2	5	47	
Leptospirosis							1	
V	Amebiasis	4	2	1	3	22	6	88
	Acute viral hepatitis(excluding Hepatitis A,Hepatitis E)		1	4		6	1	22
	Acute encephalitis						1	22
	Cryptosporidiosis							1
	Creutzfeldt-Jakob Disease						1	16
	Sever invasive streptococcal infections						1	18
	Acquired immunodeficiency syndrome	9	11	12	5	57	14	156
	Giardiasis		1	1		3		4
	Meningococcal meningitis							1
	Congenital rubella syndrome							
	Syphilis		2		3	10	5	51
	Tetanus							4
	Vancomycin-resistant <i>Staphylococcus aureus</i> infection							
	Vancomycin-resistant <i>enterococcus</i> infection			1		3		12

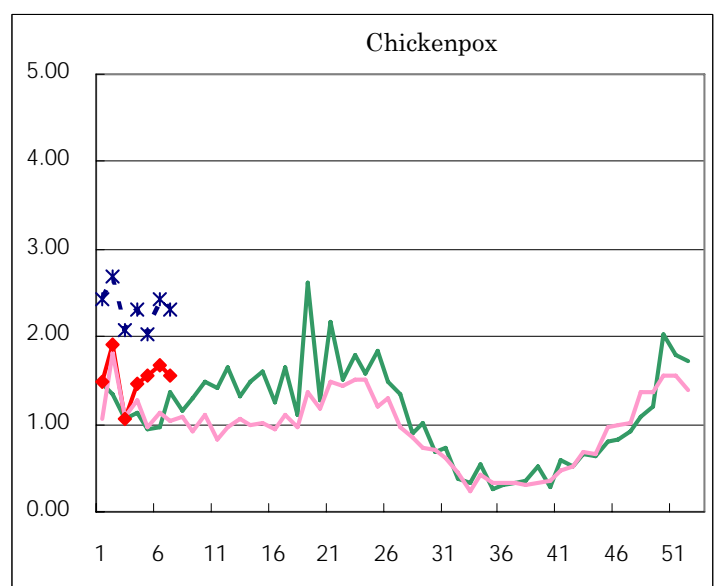
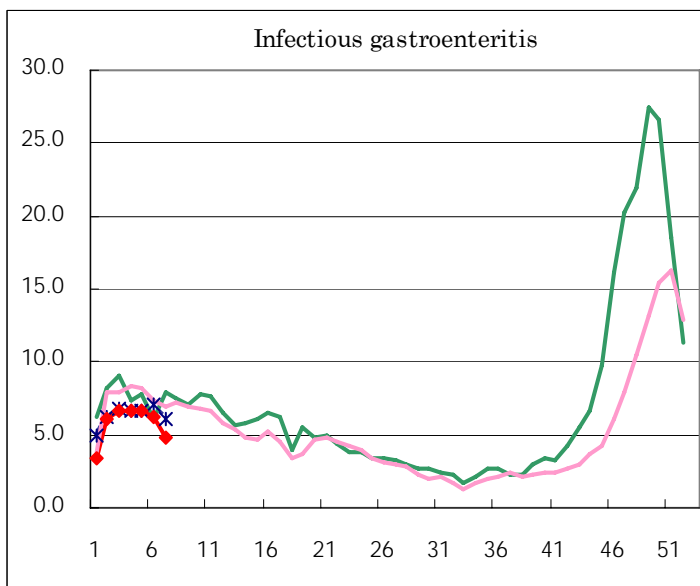
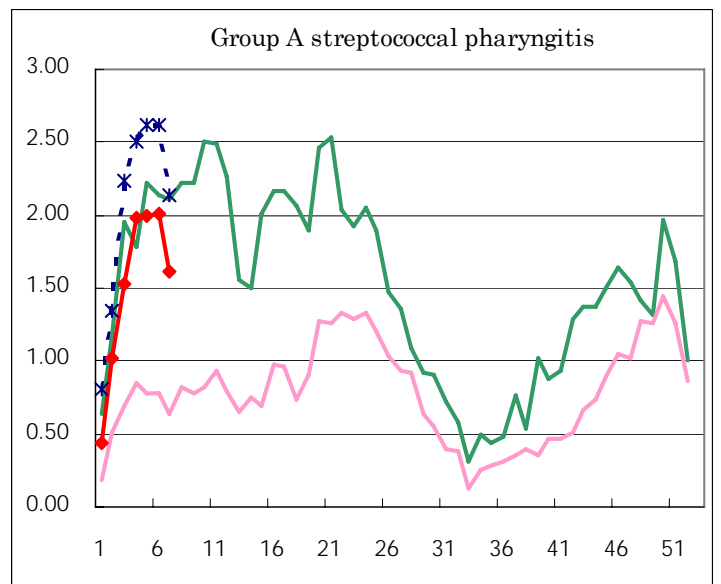
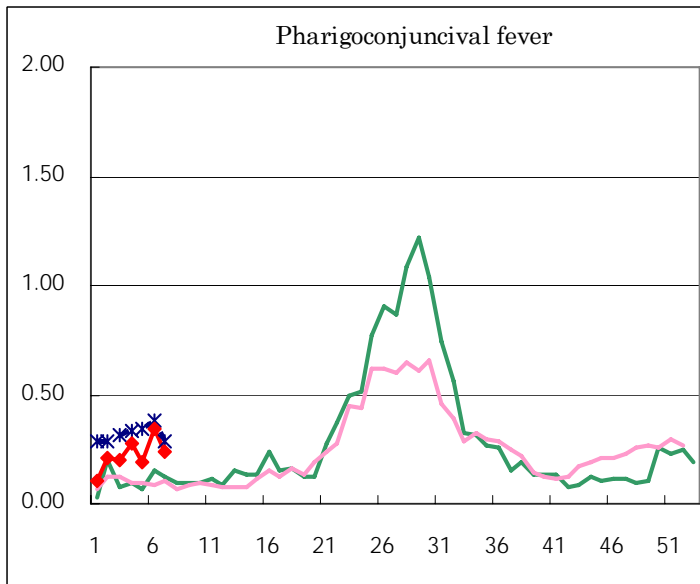
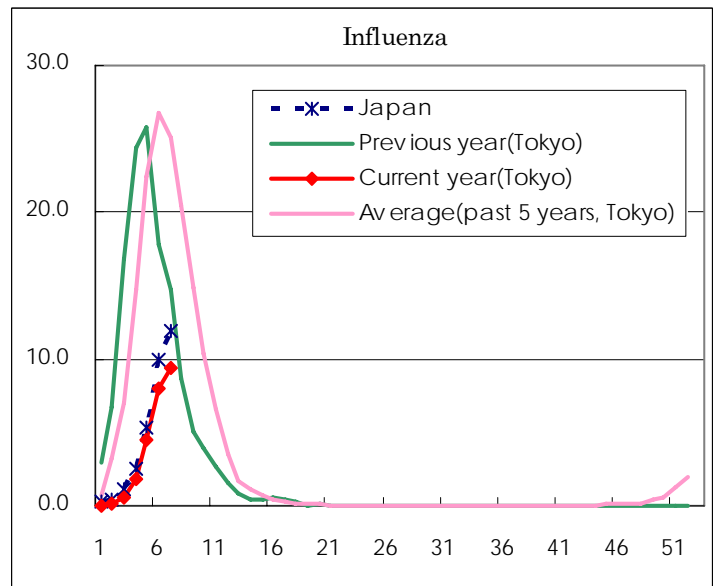
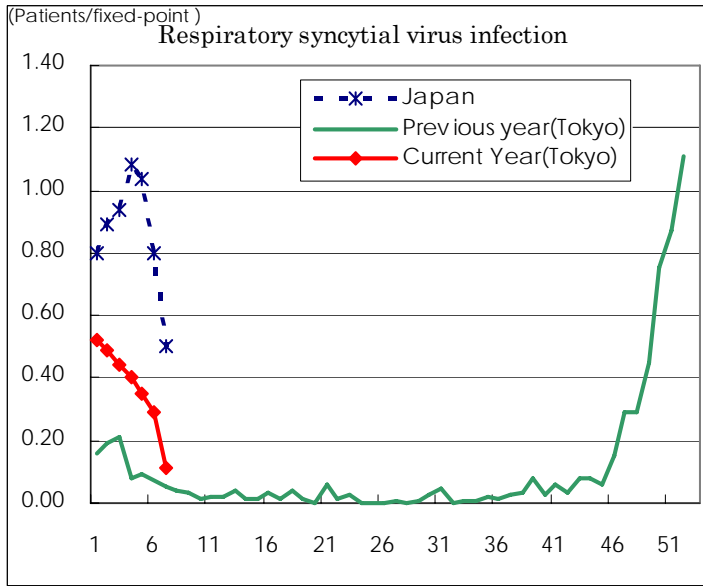
( Blank means 0. )

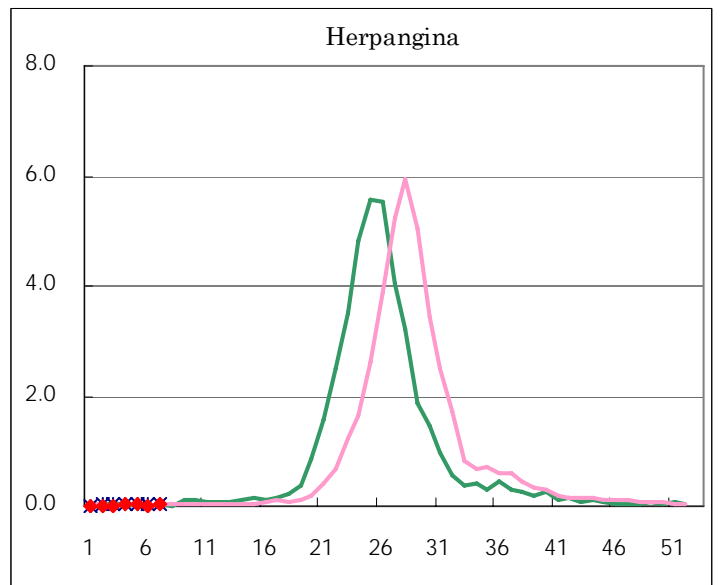
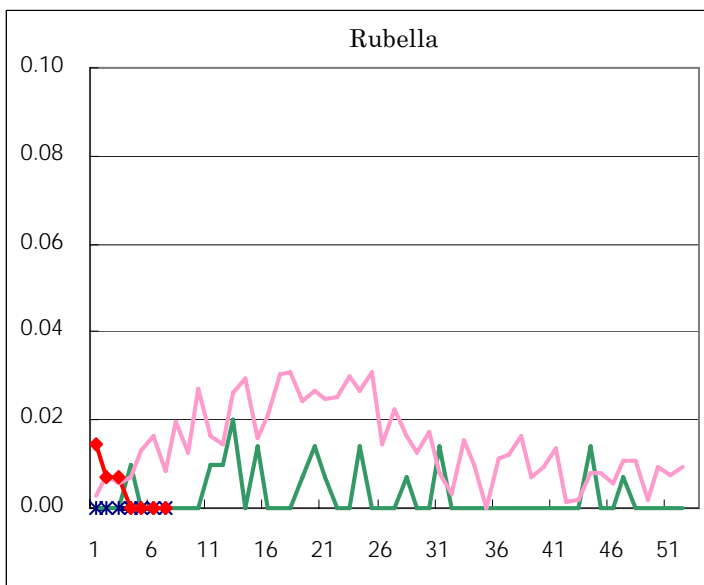
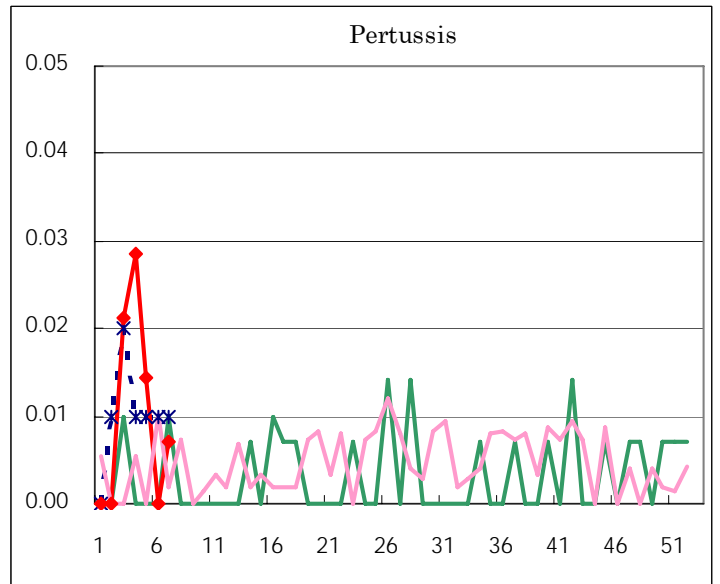
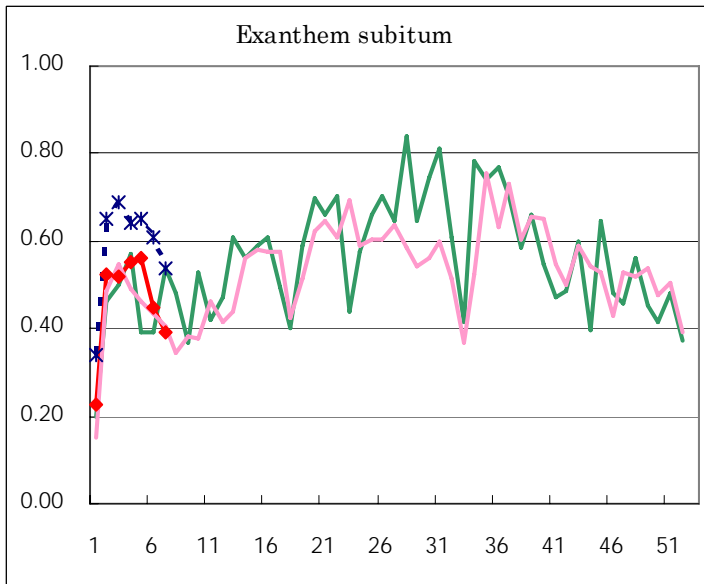
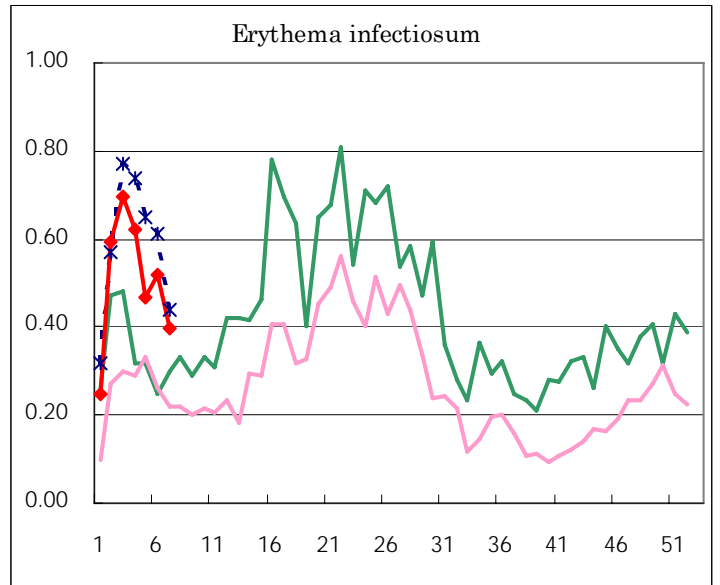
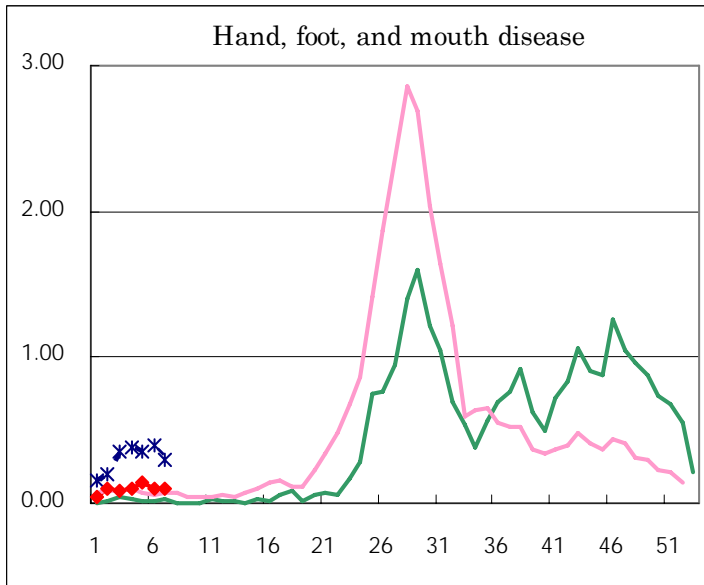
Number of patients with the diseases to be reported  
by the designated clinics and hospitals

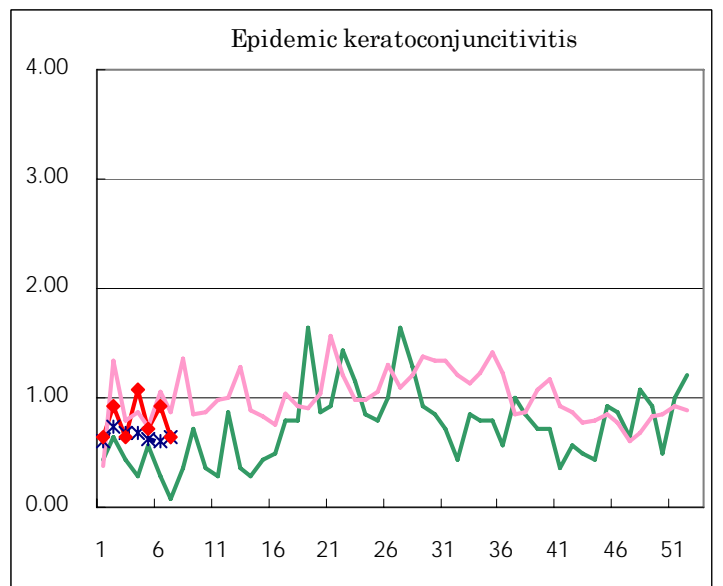
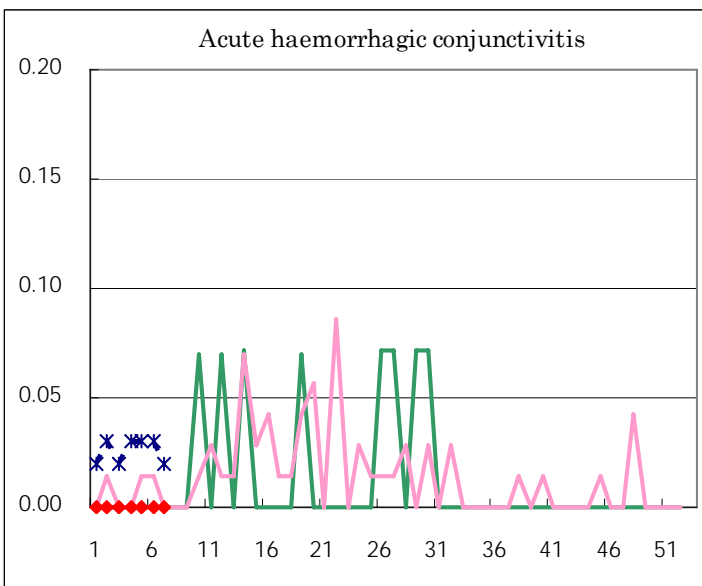
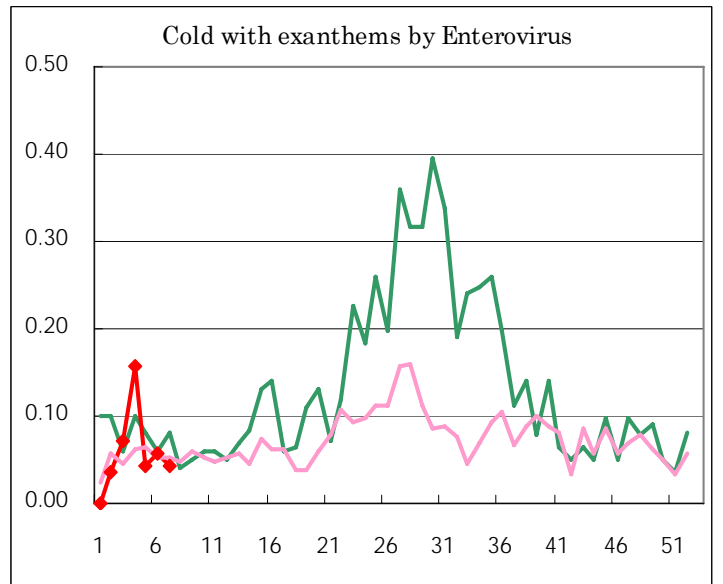
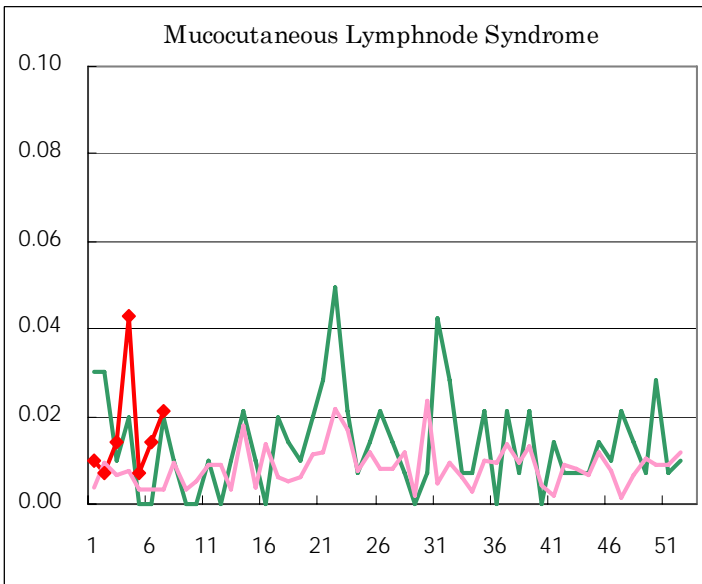
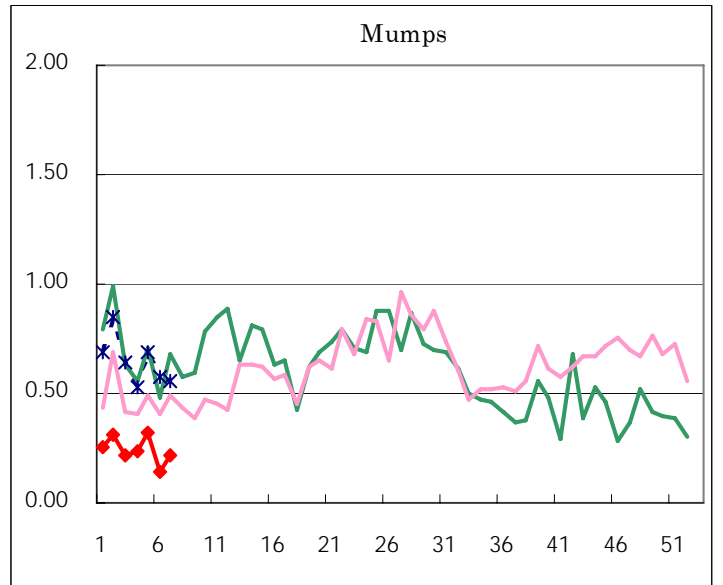
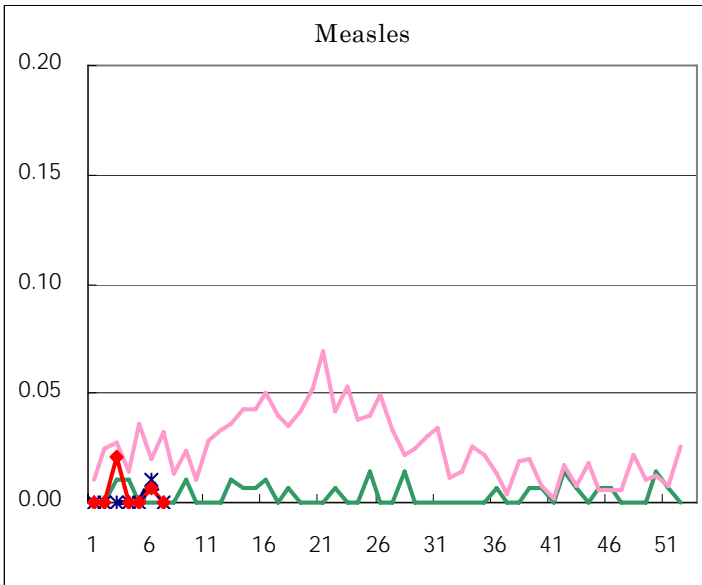
Diseases	Sex	2006				Total
		4th	5th	6th	7th	
Respiratory syncytial virus infection	M	30	21	24	12	87
	F	26	28	17	4	75
Influenza	M	251	671	1,159	1,291	3,372
	F	247	573	1,085	1,321	3,226
Pharygoconjunctival fever	M	18	12	27	22	79
	F	21	15	21	12	69
Group A streptococcal pharyngitis	M	139	137	150	130	556
	F	138	140	134	97	509
Infectious gastroenteritis	M	480	445	431	356	1,712
	F	447	472	439	322	1,680
Chickenpox	M	98	117	126	103	444
	F	106	100	111	117	434
Hand, foot, and mouth disease	M	5	10	7	6	28
	F	8	10	7	7	32
Erythema infectiosum	M	41	29	36	26	132
	F	46	36	37	30	149
Exanthem subitum	M	33	32	33	29	127
	F	44	46	30	26	146
Pertussis	M	3	1			4
	F	1	1		1	3
Rubella	M					
	F					
Herpangina	M	2	1	2	4	9
	F	2	3		1	6
Measles	M					
	F			1		1
Mumps	M	20	21	14	18	73
	F	13	23	6	13	55
Cold with exanthems by Enterovirus	M	11	2	5	3	21
	F	11	4	3	3	21
Mucocutaneous Lymphnode Syndrome	M	4		1	1	6
	F	2	1	1	2	6
Acute hemorrhagic conjunctivitis	M					
	F					
Epidemic keratoconjunctivitis	M	11	6	8	7	32
	F	4	4	5	2	15
Bacterial meningitis	M					
	F	1				1
Aseptic meningitis	M		1		2	3
	F					
Mycoplasma pneumonia	M	1	4	1	3	9
	F	1	3		2	6
Chlamydial pneumonia (excluding psittacosis)	M					
	F					
Measles in adults	M			1		1
	F					

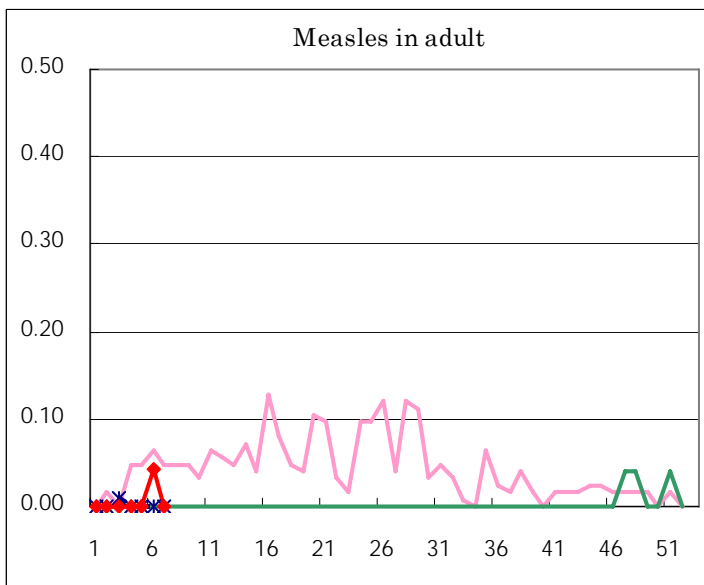
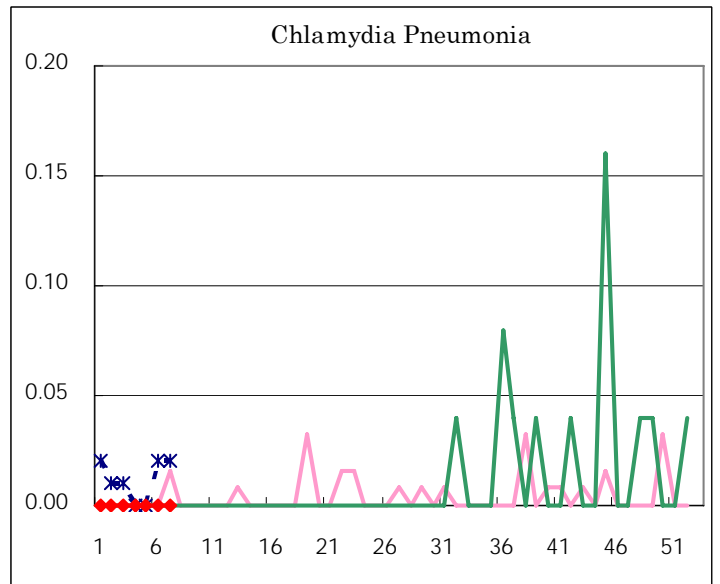
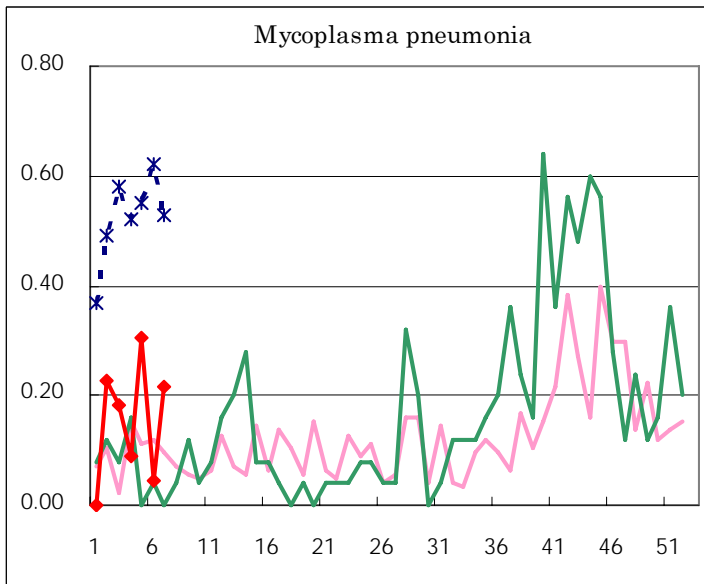
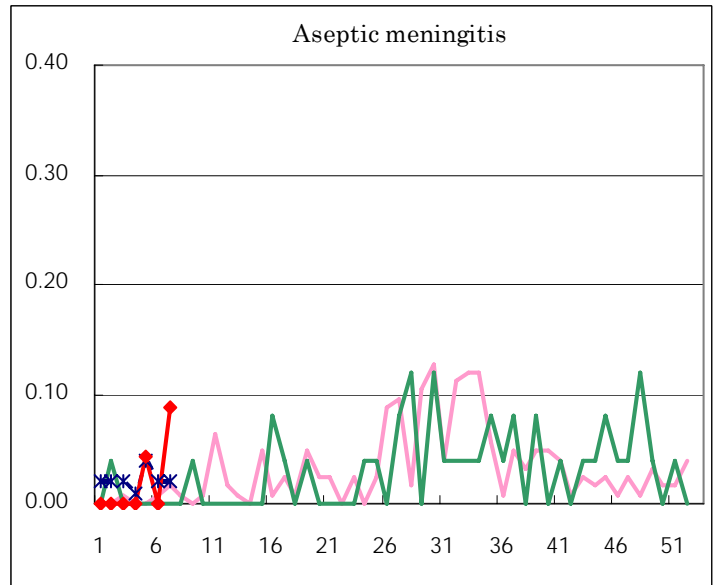
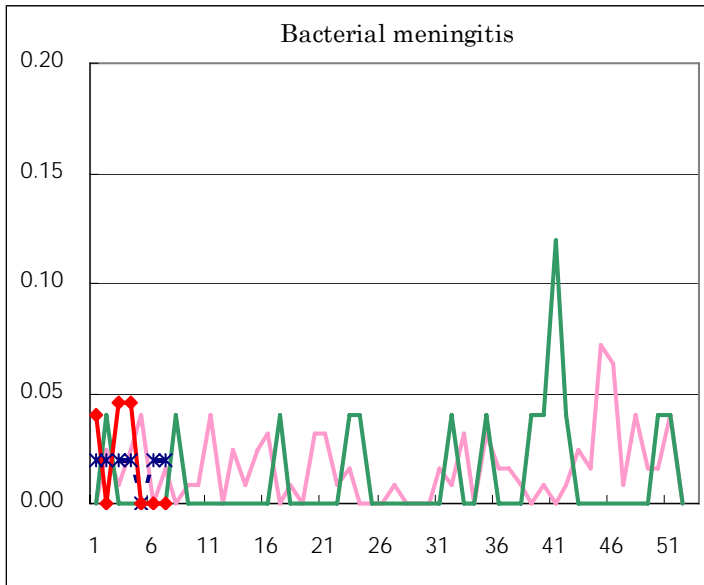
( Blank means 0. )

# Disease Trend Graph (weekly reported cases per fixed-point in comparison)









Tokyo Metropolitan Government  
**Infectious Disease Surveillance Center**