

INFECTIOUS DISEASES WEEKLY REPORT

TOKYO IDWR

Tokyo Metropolitan Institute of Public Health

27 March 2007 / Number 11

- Number of patients with the diseases required notifying all the cases
- Number of patients with the diseases to be reported by the sentinel clinics and hospitals
- Disease trend graph (weekly reported cases per sentinel in comparison)

Surveillance System in Tokyo, Japan

The infectious diseases which all physicians must report

All physicians must report to health centers the incidence of the diseases which are shown at page one. Health centers electronically report the individual cases to Tokyo Metropolitan Infectious Disease Surveillance Center.

The infectious diseases required to be reported by the sentinels

The numbers of patients who visit the sentinel clinics or hospitals during a week are reported to health centers in Tokyo. And they electronically report the numbers to Tokyo Metropolitan Infectious Disease Surveillance Center. We have about 260 sentinel clinics and hospitals in Tokyo.

1st Week is early January and 52nd Week is end of December.

Tokyo Metropolitan Infectious Disease Surveillance Center
Tokyo Metropolitan Institute of Public Health

TEL:81-3-3363-3213 FAX:81-3-5332-7365
e-mail:idsc@tokyo-eiken.go.jp
URL:idsc.tokyo-eiken.go.jp/

Number of patients with the diseases which all physicians must report

Category	Diseases	Tokyo				Total	Japan	
		8th	9th	10th	11th		11th	Total
I	Ebola hemorrhagic fever							
	Crimean-Congo hemorrhagic fever							
	Severe acute respiratory syndrome							
	Smallpox							
	Plague							
	Marburg disease							
	Lassa fever							
II	Acute poliomyelitis							
	Cholera							3
	Shigellosis		3		2	17	6	103
	Diphtheria							
	Typhoid fever		1			1	1	7
	Paratyphoid fever					2		4
III	Enterohemorrhagic <i>Escherichia coli</i> infection				1	4	8	144
IV	Hepatitis E					1	1	12
	West Nile fever							
	Hepatitis A	1				7	1	36
	Echinococcosis					1		4
	Yellow fever							
	Psittacosis				1	1	1	6
	Relapsing fever							
	Q fever							3
	Rabies							
	High pathogenic avian influenza							
	Coccidioidomycosis					1		1
	Monkeypox							
	Hemorrhagic fever with renal syndrome							
	Anthrax							
	Scrub typhus (Tsutsugamushi disease)					2		37
	Dengue fever			1		1		9
	Nipah virus infection							
	Japanese spotted fever							
	Japanese encephalitis							1
	Hantavirus pulmonary syndrome							
	B virus disease							
	Brucellosis							
	Epidemic typhus							
Botulism							1	
Malaria					2		5	
Tularemia								
Lyme disease								
Lyssavirus infection								
Legionellosis				1	3	4	77	
Leptospirosis							1	
V	Amebiasis	3	5	3	2	35	10	151
	Acute viral hepatitis(excluding Hepatitis A,Hepatitis E)	1		2		9		29
	Acute encephalitis						5	45
	Cryptosporidiosis							1
	Creutzfeldt-Jakob Disease		1	1		2	4	34
	Sever invasive streptococcal infections		1	1		2		25
	Acquired immunodeficiency syndrome	12	8	14	4	96	8	249
	Giardiasis					3		8
	Meningococcal meningitis						1	2
	Congenital rubella syndrome							
	Syphilis		4	2	1	17	9	99
	Tetanus						1	11
	Vancomycin-resistant <i>Staphylococcus aureus</i> infection							
	Vancomycin-resistant <i>enterococcus</i> infection		1	1		5	1	18

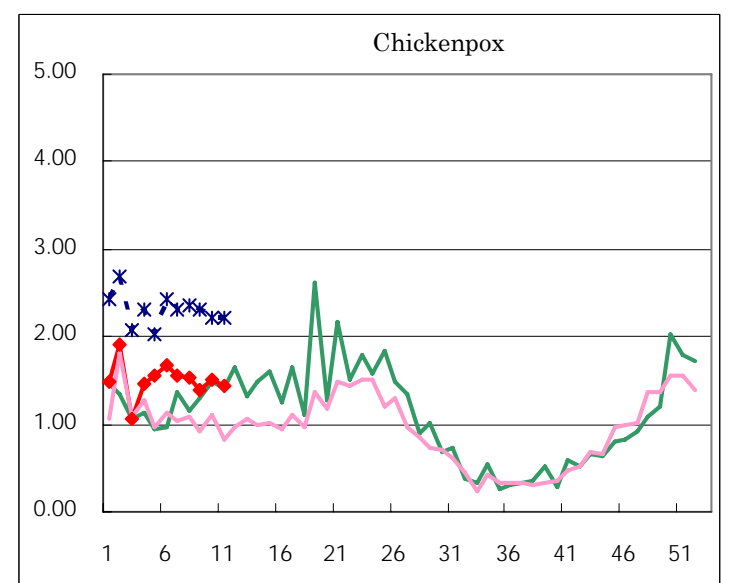
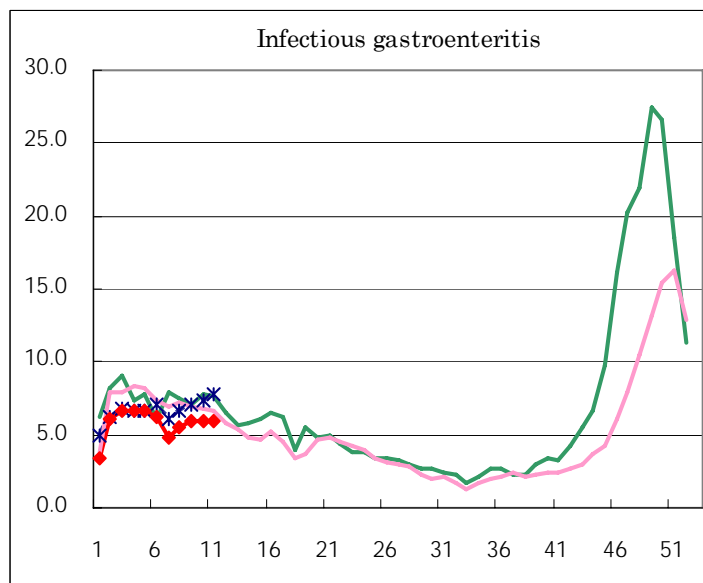
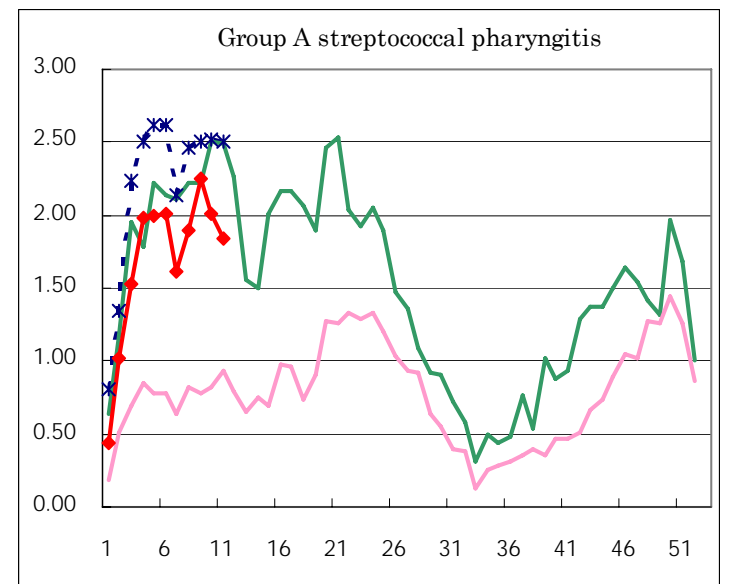
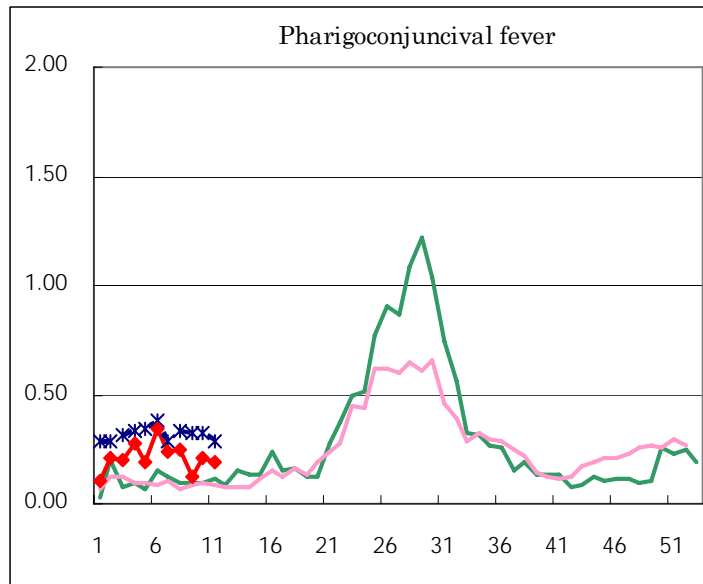
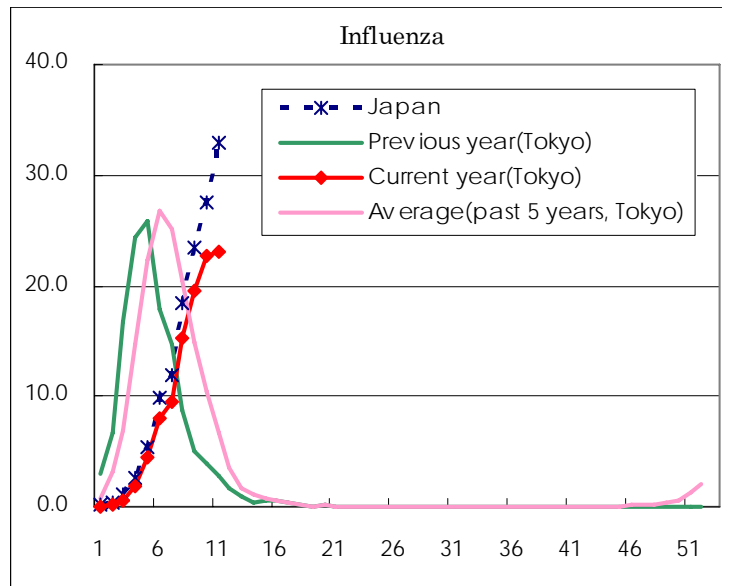
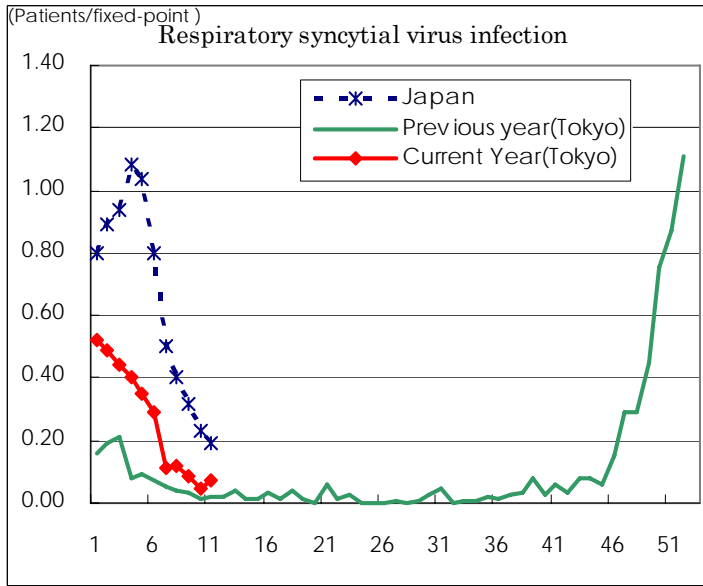
(Blank means 0.)

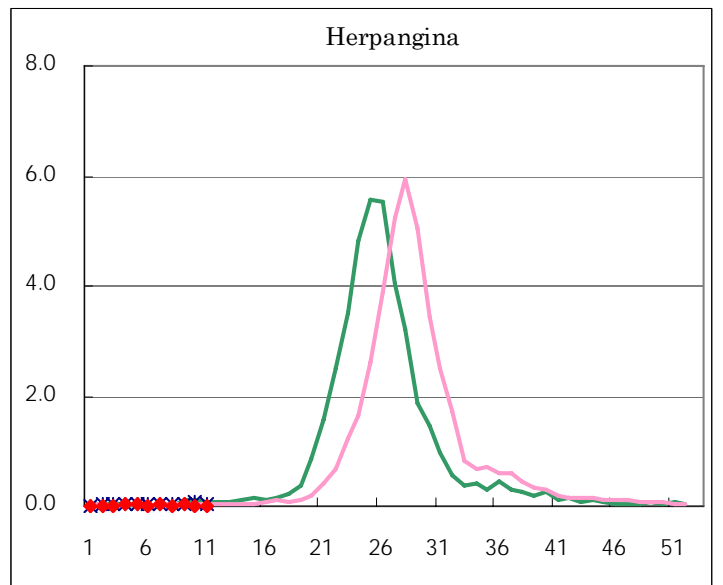
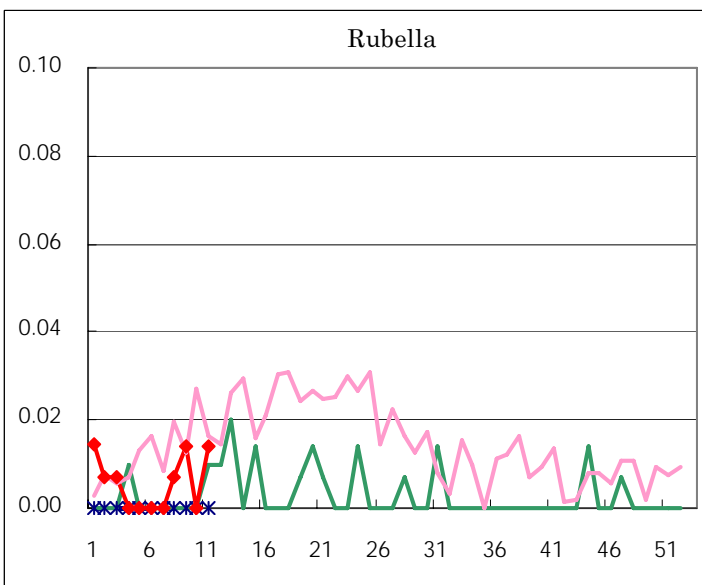
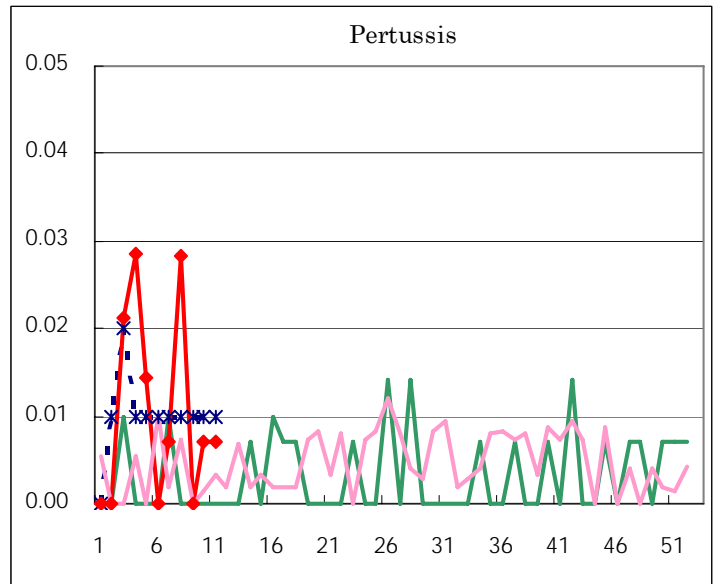
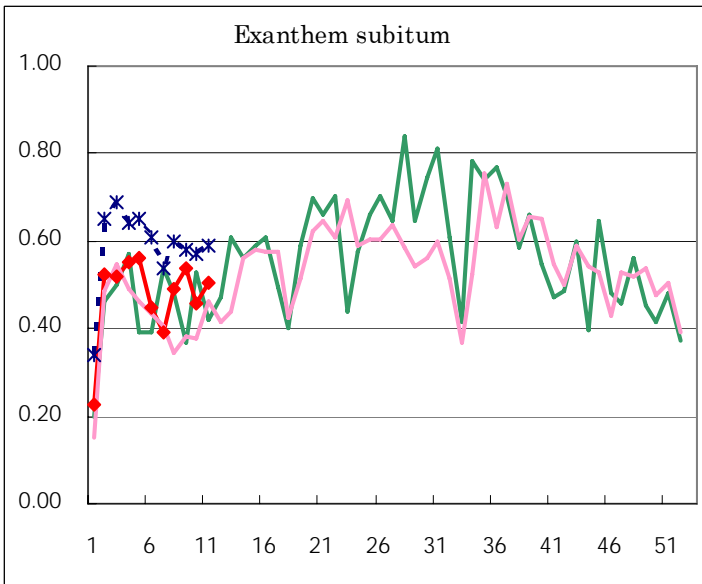
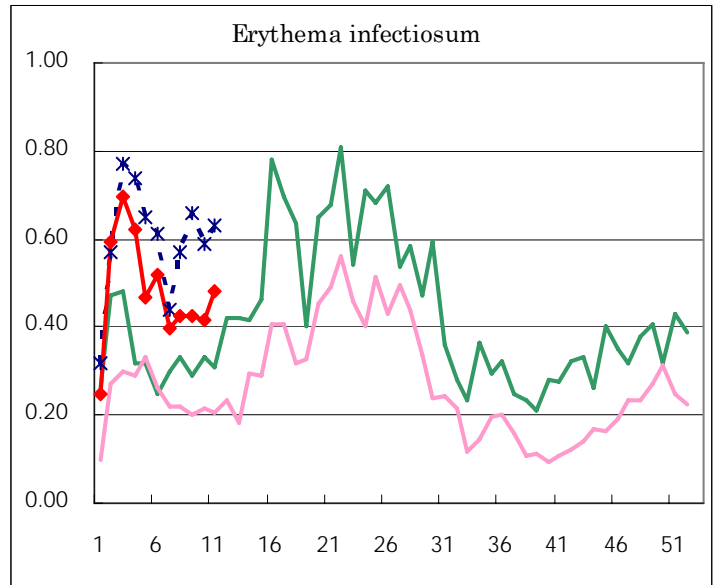
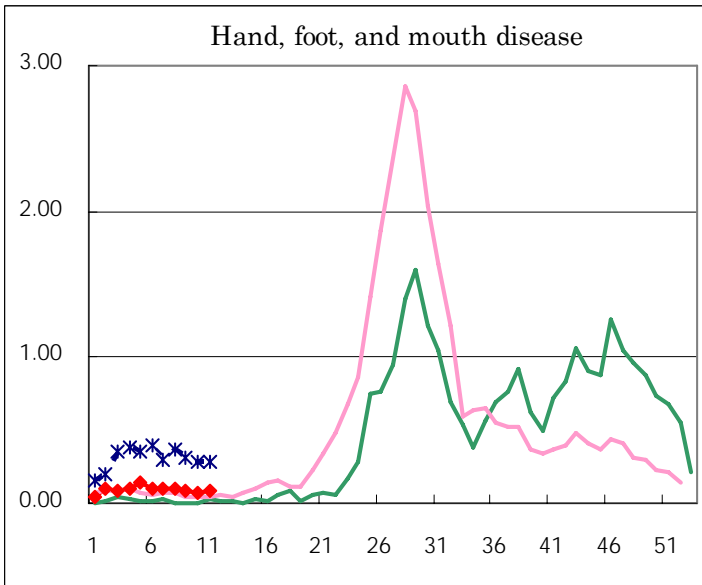
Number of patients with the diseases to be reported
by the designated clinics and hospitals

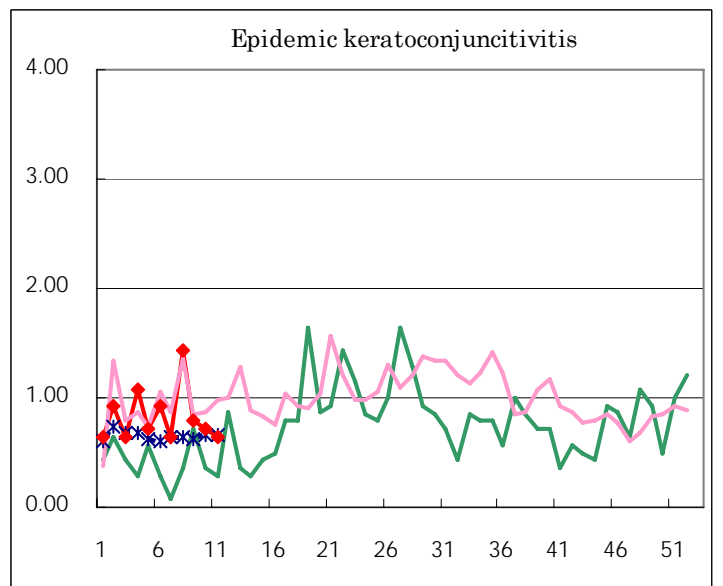
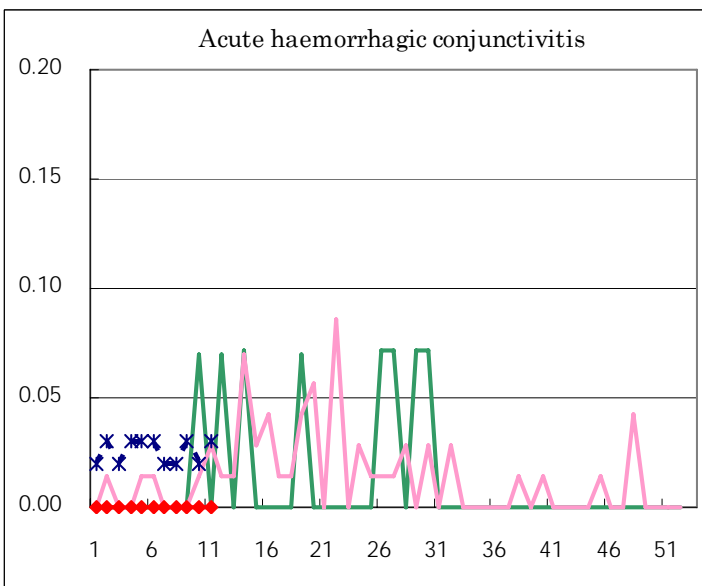
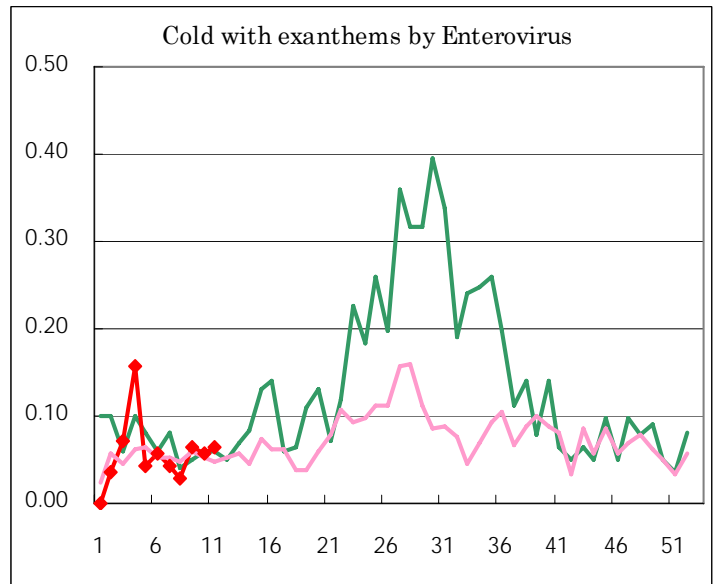
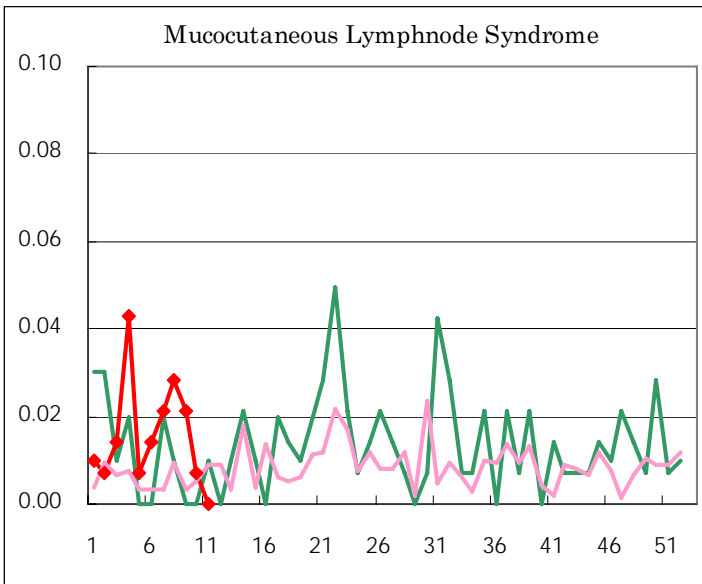
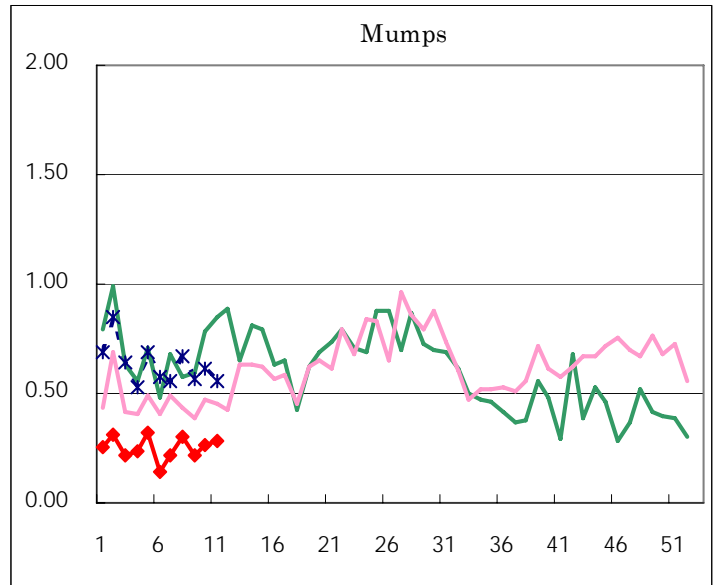
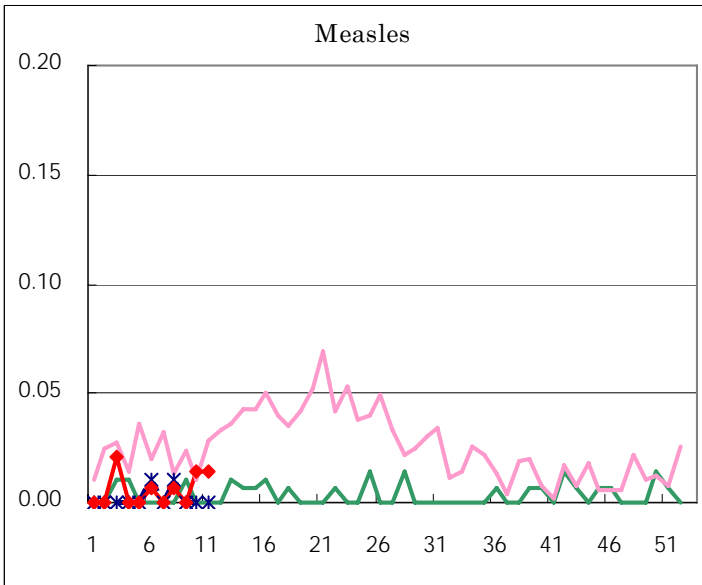
Diseases	Sex	2007				Total
		8th	9th	10th	11th	
Respiratory syncytial virus infection	M	8	9	3	5	25
	F	9	3	4	5	21
Influenza	M	2,211	2,737	3,165	3,275	11,388
	F	2,045	2,733	3,221	3,188	11,187
Pharyngoconjunctival fever	M	17	11	16	10	54
	F	18	7	14	17	56
Group A streptococcal pharyngitis	M	141	187	132	133	593
	F	127	130	154	127	538
Infectious gastroenteritis	M	424	391	454	431	1,700
	F	358	449	396	405	1,608
Chickenpox	M	117	106	102	106	431
	F	99	90	114	96	399
Hand, foot, and mouth disease	M	5	6	6	4	21
	F	8	5	5	7	25
Erythema infectiosum	M	32	33	32	35	132
	F	28	27	27	33	115
Exanthem subitum	M	37	41	31	39	148
	F	32	35	34	32	133
Pertussis	M	1		1		2
	F	3			1	4
Rubella	M		1			1
	F	1	1		2	4
Herpangina	M		2	1	1	4
	F	1	1	1	1	4
Measles	M	1		1	1	3
	F			1	1	2
Mumps	M	25	14	19	16	74
	F	18	16	18	24	76
Cold with exanthems by Enterovirus	M	1	5	3	5	14
	F	3	4	5	4	16
Mucocutaneous Lymphnode Syndrome	M	1	1	1		3
	F	3	2			5
Acute hemorrhagic conjunctivitis	M					
	F					
Epidemic keratoconjunctivitis	M	11	7	9	3	30
	F	9	4	1	6	20
Bacterial meningitis	M					
	F					
Aseptic meningitis	M	1				1
	F	1	1			2
Mycoplasma pneumonia	M		2		1	3
	F	2				2
Chlamydial pneumonia (excluding psittacosis)	M		1			1
	F					
Measles in adults	M				4	4
	F				1	1

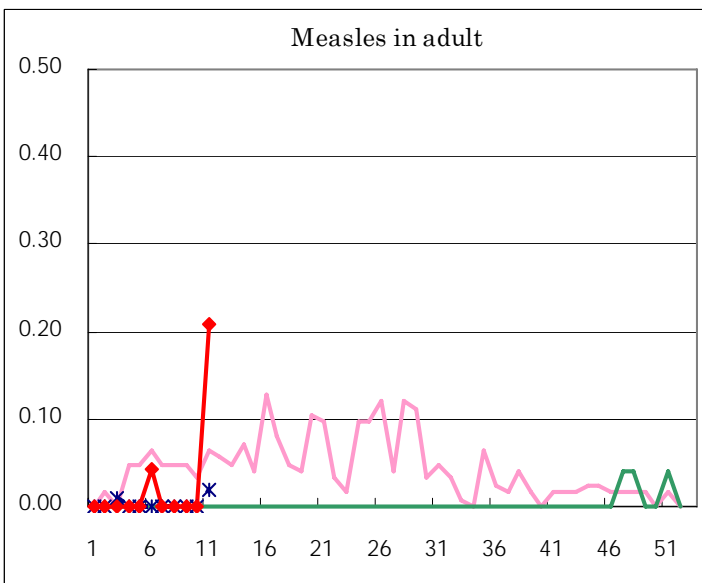
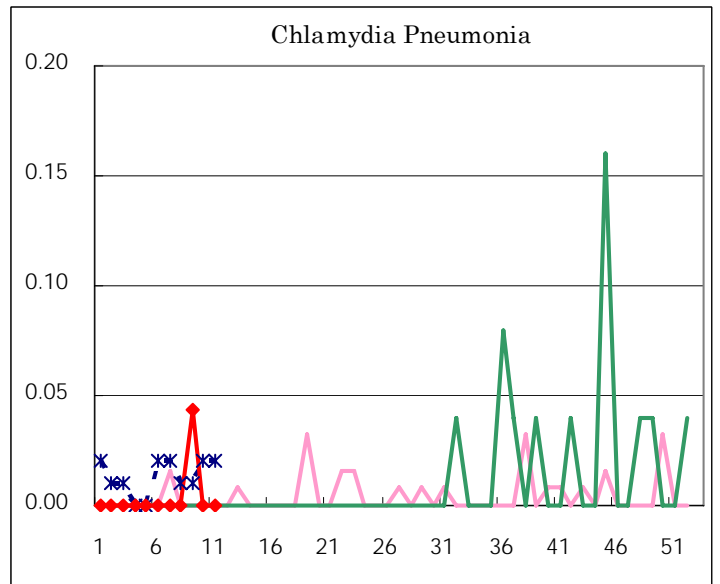
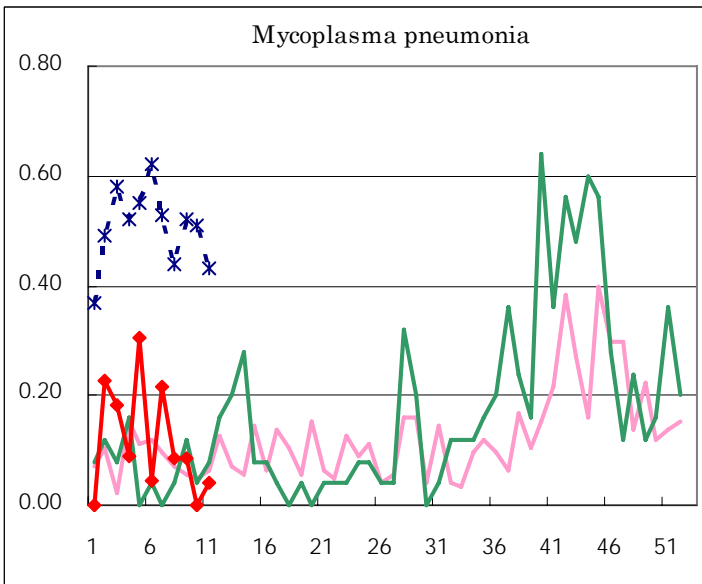
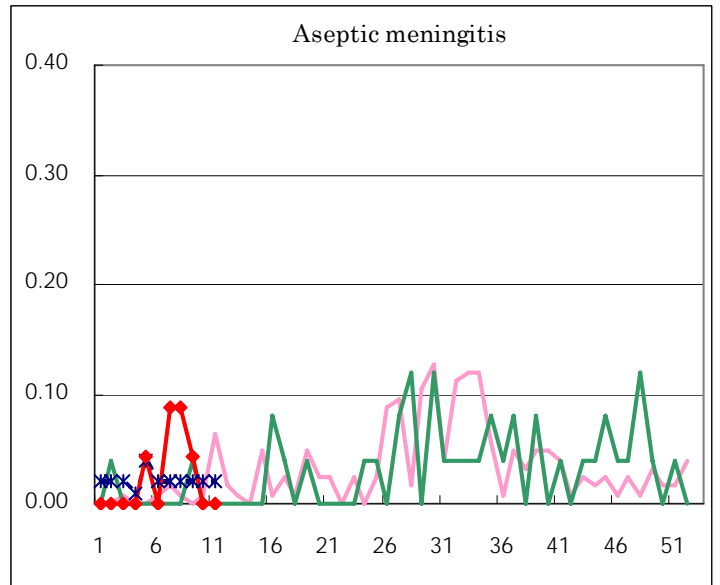
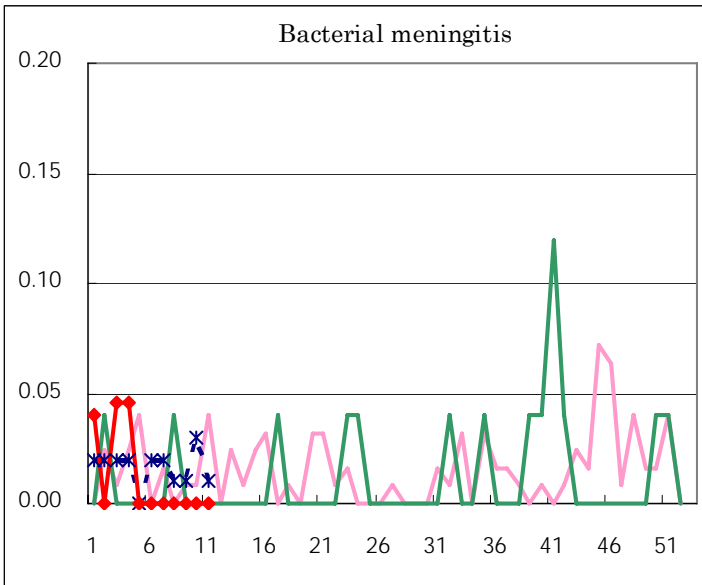
(Blank means 0.)

Disease Trend Graph (weekly reported cases per fixed-point in comparison)









Tokyo Metropolitan Government
Infectious Disease Surveillance Center