

---

INFECTIOUS DISEASES WEEKLY REPORT

# TOKYO IDWR

Tokyo Metropolitan Infectious Disease Surveillance Center

## 12 April 2007 / Number 14

### Surveillance System in Tokyo, Japan

The infectious diseases which all physicians must report

All physicians must report to health centers the incidence of the diseases which are shown at page one. Health centers electronically report the individual cases to Tokyo Metropolitan Infectious Disease Surveillance Center.

The infectious diseases required to be reported by the sentinels

The numbers of patients who visit the sentinel clinics or hospitals during a week are reported to health centers in Tokyo. And they electronically report the numbers to Tokyo Metropolitan Infectious Disease Surveillance Center. We have about 400 sentinel clinics and hospitals in Tokyo.

1st Week is early January and 52nd Week is end of December.

Tokyo Metropolitan Institute of Public Health  
Epidemiological Information Office

TEL:81-3-3363-3213 FAX:81-3-5332-7365

e-mail:[idsc@tokyo-eiken.go.jp](mailto:idsc@tokyo-eiken.go.jp)

URL:[idsc.tokyo-eiken.go.jp/](http://idsc.tokyo-eiken.go.jp/)

---

## Number of patients with the diseases which all physicians must report

Category	Diseases	Tokyo					Japan	
		11th	12th	13th	14th	Cum 2007	14th	Cum 2007
I	Ebola hemorrhagic fever							
	Crimean-Congo hemorrhagic fever							
	Smallpox							
	South American hemorrhagic fever	/	/	/				
	Plague							
	Marburg disease							
	Lassa fever							
II	Acute poliomyelitis							
	Tuberculosis	/	/	/	14	14	47	48
	Diphtheria							
	Severe Acute Respiratory Syndrome(SARS)							
III	Cholera							3
	Shigellosis	2		1	2	20	6	132
	Enterohemorrhagic Escherichia coli infection	1				4	16	178
	Typhoid fever					1		9
	Paratyphoid fever					2		4
IV	Hepatitis E					1	1	16
	West Nile fever							
	Hepatitis A		1	1		9	1	41
	Echinococcosis					1		4
	Yellow fever							
	Psittacosis	1				1		7
	Omsk hemorrhagic fever	/	/	/				
	Relapsing fever							
	Kyasanur forest disease	/	/	/				
	Q fever							3
	Rabies							
	Coccidioidomycosis					1		1
	Monkeypox							
	Hemorrhagic fever with renal syndrome							
	Western equine encephalitis	/	/	/				
	Tick-borne encephalitis	/	/	/				
	Anthrax							
	Scrub typhus(Tsutsugamushi disease)					2		41
	Dengue fever					1	1	13
	Eastern equine encephalitis	/	/	/				
	Avian influenza virus infection							
	Nipah virus infection							
	Japanese spotted fever							
	Japanese encephalitis							1
	Epidemic typhus							
	Hantavirus pulmonary syndrome							
	Herpes B virus infection							
	Glanders	/	/	/				
	Brucellosis							
	Venezuelan equine encephalitis	/	/	/				
	Hendra virus infection	/	/	/				
	Botulism							1
	Malaria		1		1	4	2	9
Tularemia								
Lyme disease								
Lyssavirus infection(excluding rabies)								
Rift valley fever	/	/	/					
Melioidosis	/	/	/					
Legionellosis	1	1	1		5	4	95	
Leptospirosis							1	
Rocky mountain spotted fever	/	/	/					

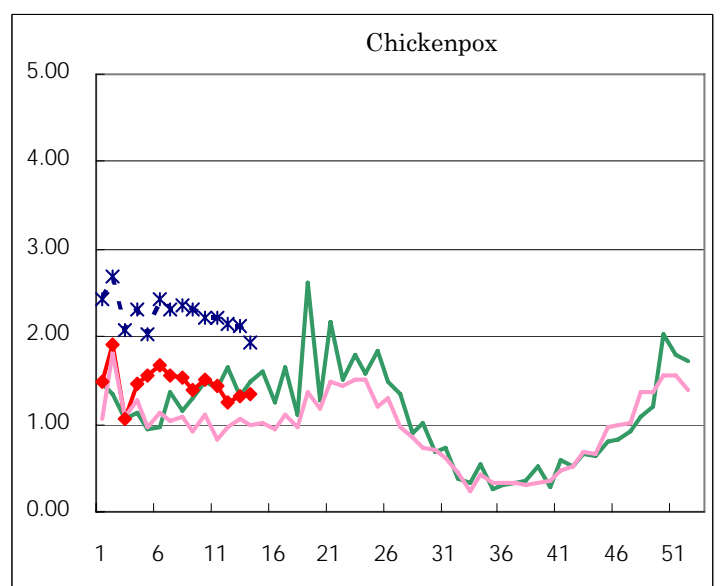
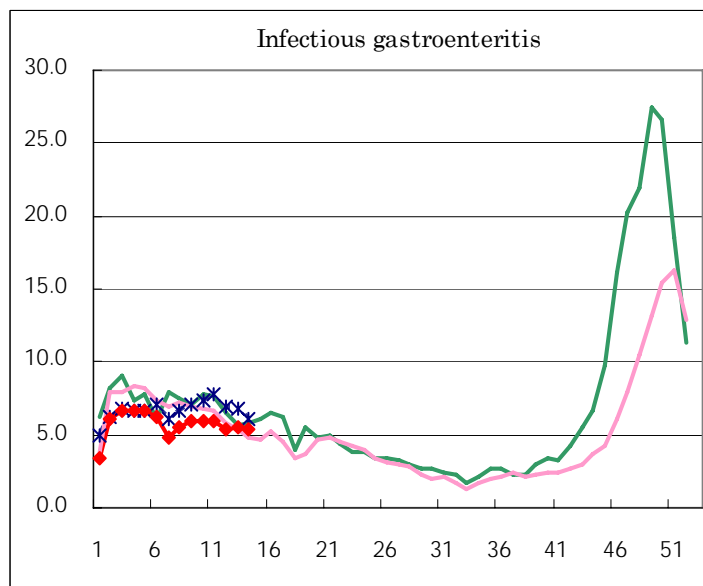
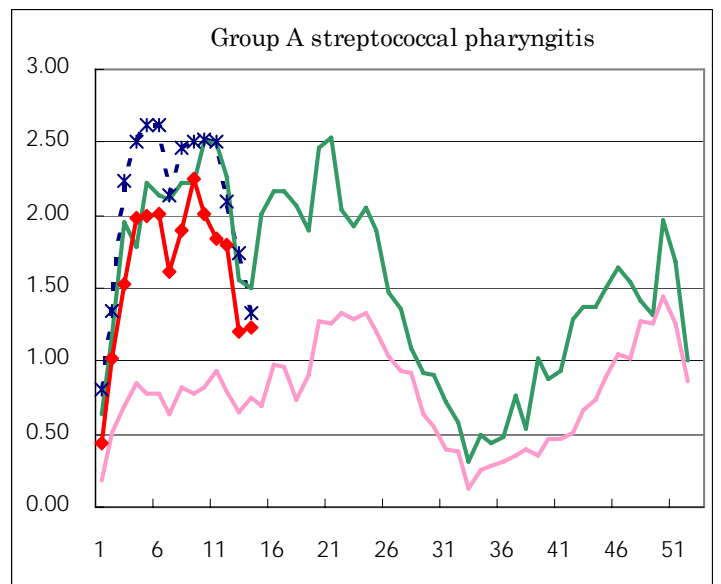
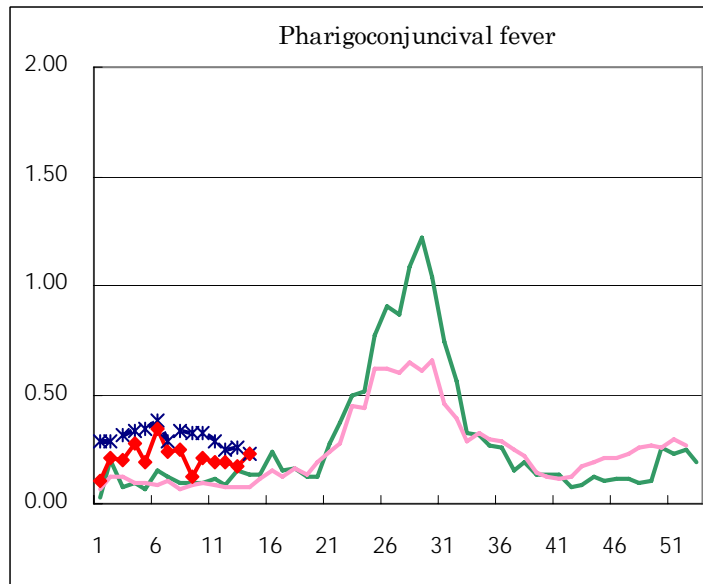
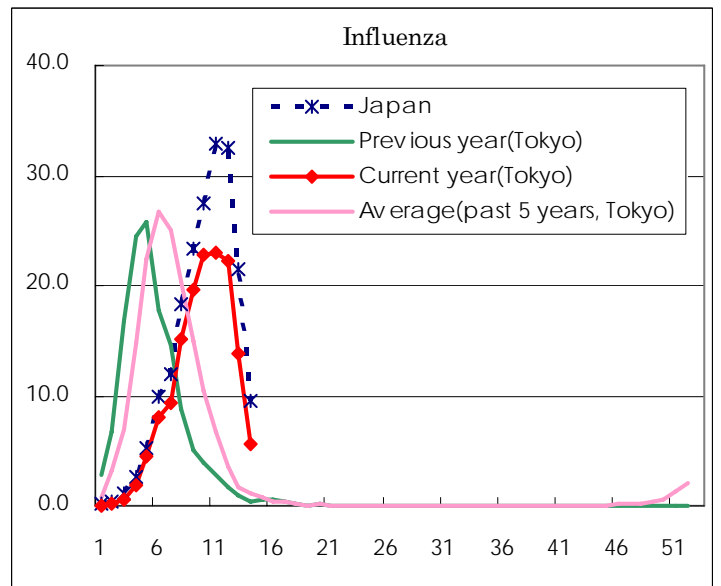
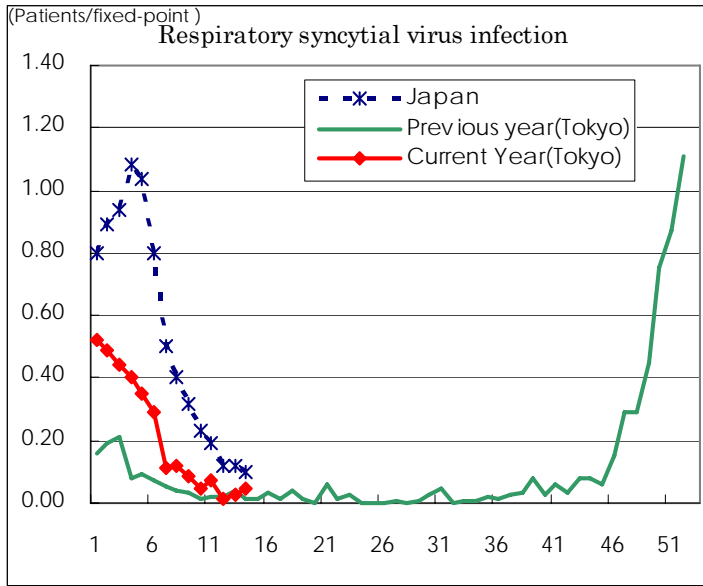
Category	Diseases	Tokyo					Japan	
		11th	12th	13th	14th	Cum 2007	14th	Cum 2007
V	Amebiasis	2	2	3		40	9	187
	Viral hepatitis(excluding hepatitis A and E)			1		10	1	33
	Acute encephalitis(excluding JE and WNE)				1	1	2	54
	Cryptosporidiosis							1
	Creutzfeldt-Jakob disease				1	3		42
	Severe invasive streptococcal infections(TSLS)					2		33
	Acquired immunodeficiency syndrome (AIDS)	4	5	11	10	122	8	299
	Giardiasis			1	1	5	1	11
	Meningococcal meningitis							4
	Congenital rubella syndrome							
	Syphilis	1	5	2	2	26	5	119
	Tetanus							14
	Vancomycin-resistant S. aureus infection							
	Vancomycin-resistant Enterococcus infection			2		7	2	21
designated	Influenza (H5N1)							

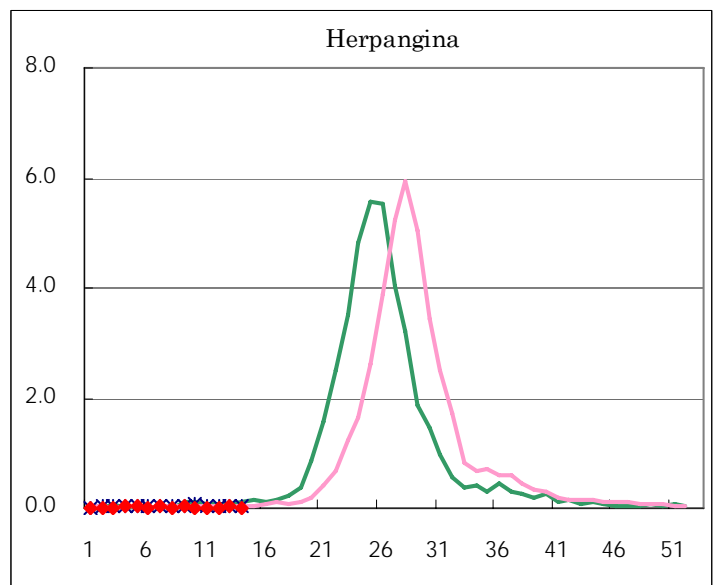
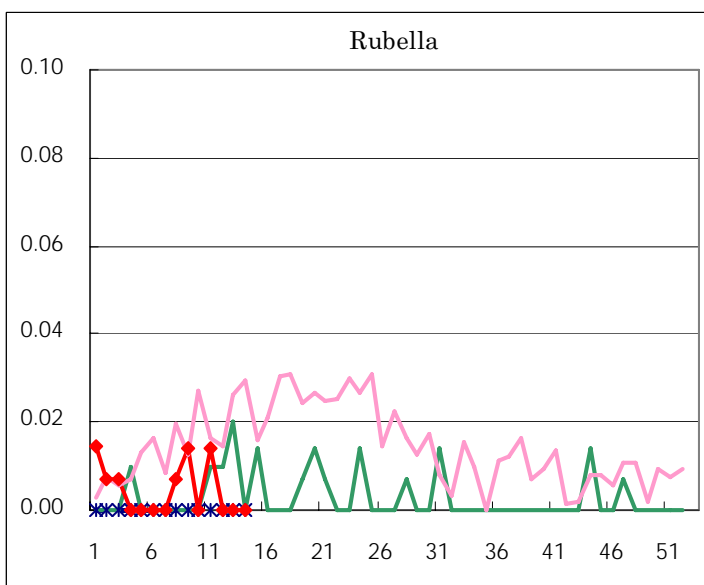
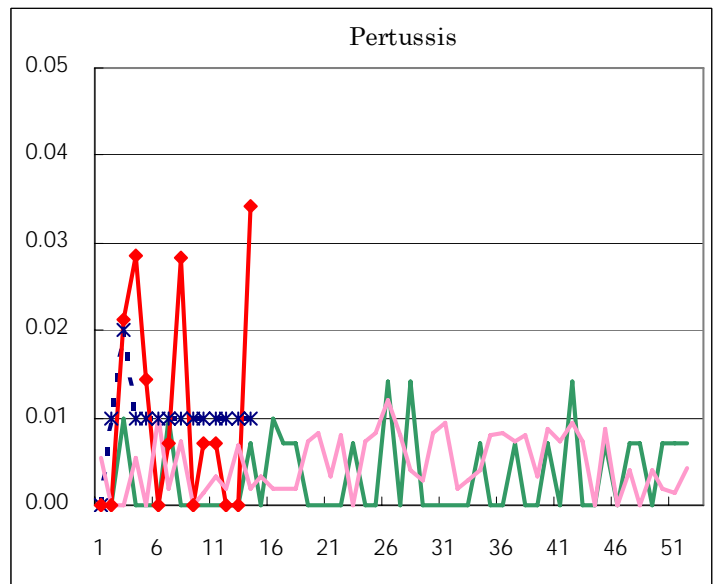
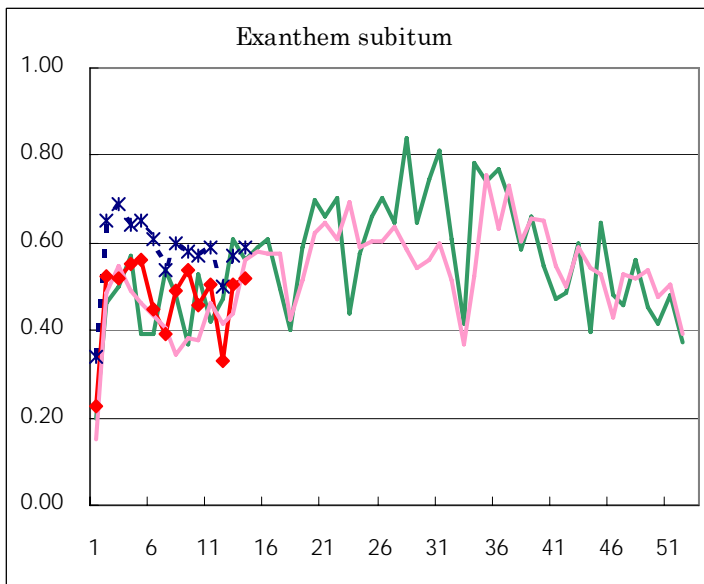
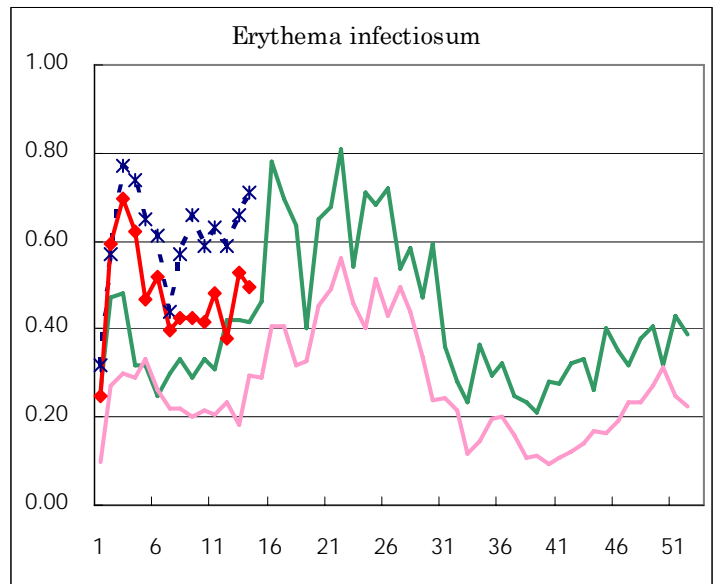
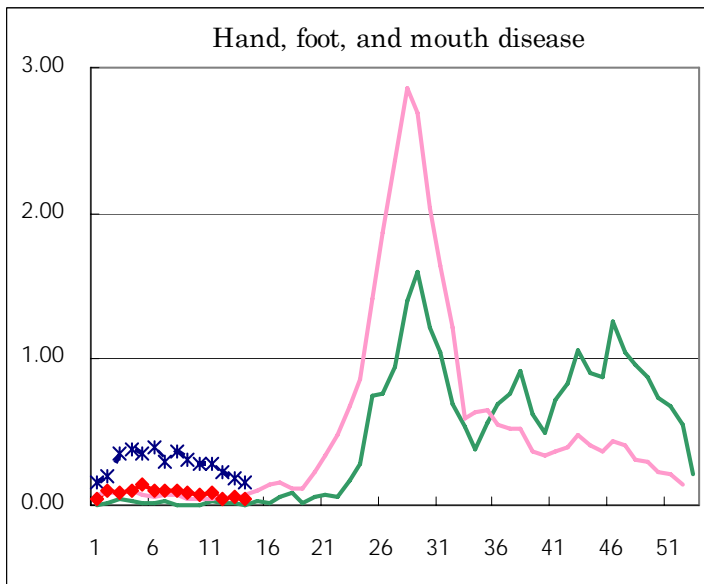
Number of patients with the diseases to be reported  
by the designated clinics and hospitals

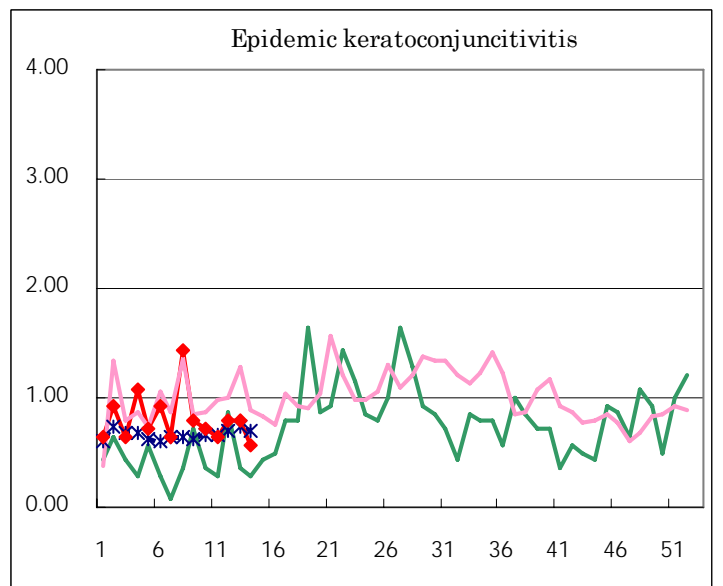
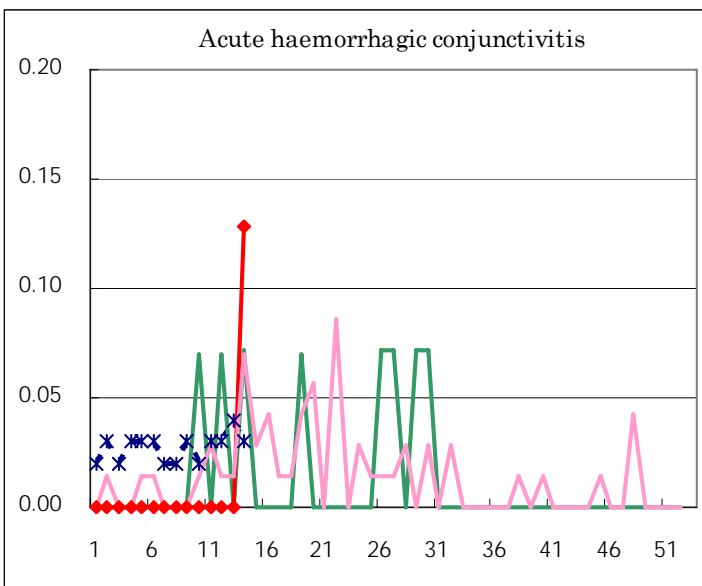
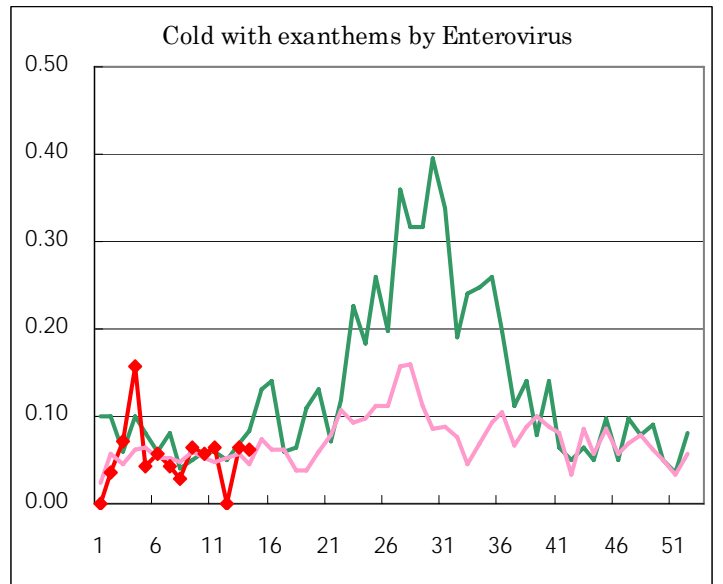
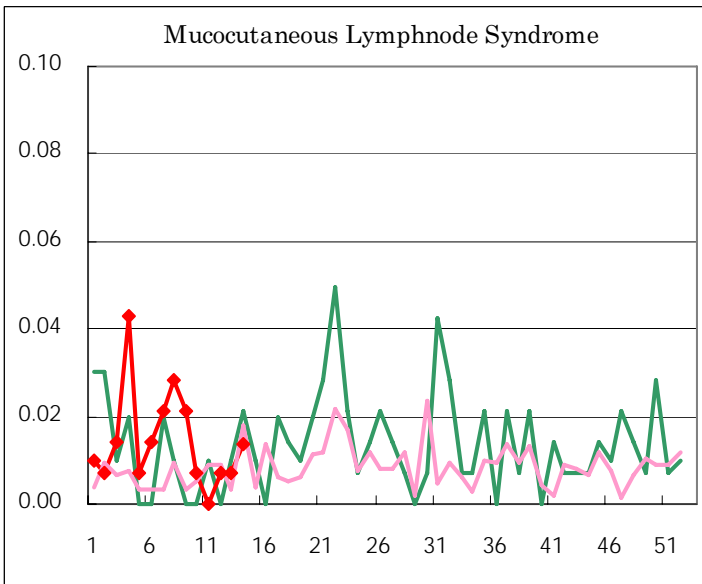
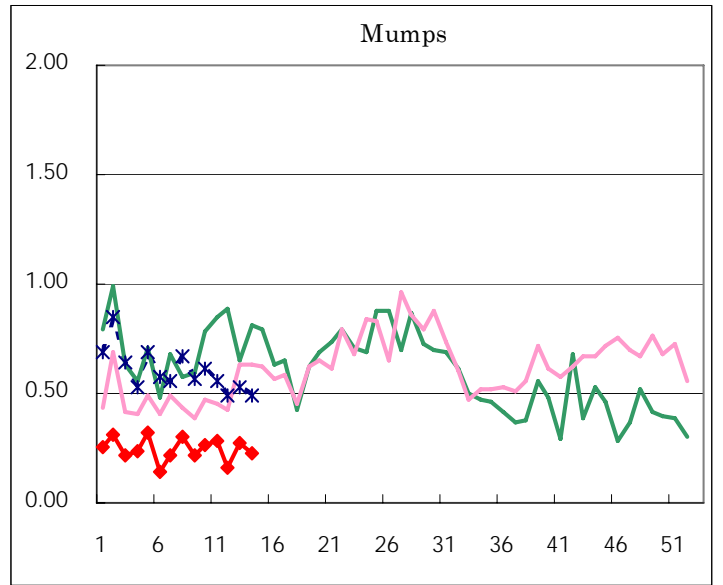
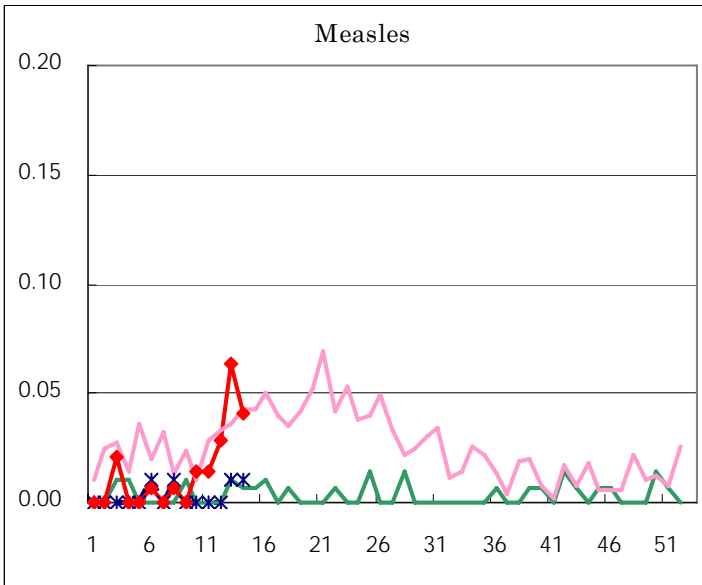
Diseases	2007				4wks total	Cum 2007
	11th	12th	13th	14th		
Respiratory syncytial virus infection	10	2	4	7	23	423
Influenza	6,463	6,207	3,872	1,601	18,143	41,072
Pharyngoconjunctival fever	27	27	24	34	112	415
Group A streptococcal pharyngitis	260	255	171	180	866	3,221
Infectious gastroenteritis	836	763	779	777	3,155	11,293
Chickenpox	202	179	189	195	765	2,899
Hand, foot, and mouth disease	11	7	9	7	34	159
Erythema infectiosum	68	54	75	72	269	945
Exanthem subitum	71	47	72	76	266	929
Pertussis	1			5	6	21
Rubella	2				2	9
Herpangina	2		5	2	9	33
Measles	2	4	9	6	21	29
Mumps	40	23	39	33	135	483
Cold with exanthems by Enterovirus	9		9	9	27	105
Mucocutaneous Lymphnode Syndrome		1	1	2	4	29
Acute hemorrhagic conjunctivitis				5	5	5
Epidemic keratoconjunctivitis	9	11	11	22	53	171
Bacterial meningitis		1			1	4
Aseptic meningitis		1			1	7
Mycoplasma pneumonia	1	1		1	3	31
Chlamydial pneumonia (excluding psittacosis)						1
Measles in adults	5	3	8	2	18	19

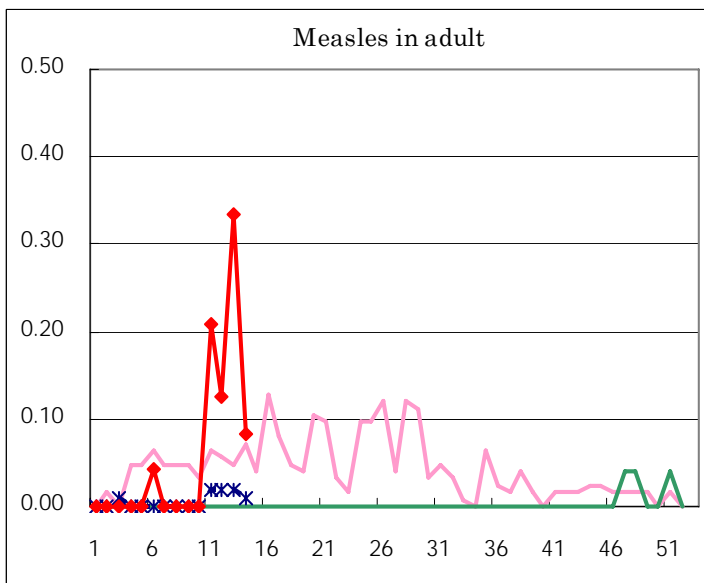
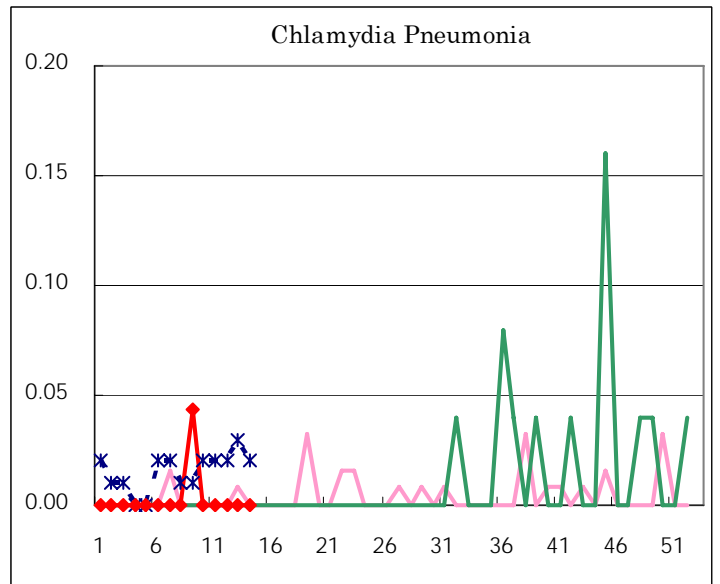
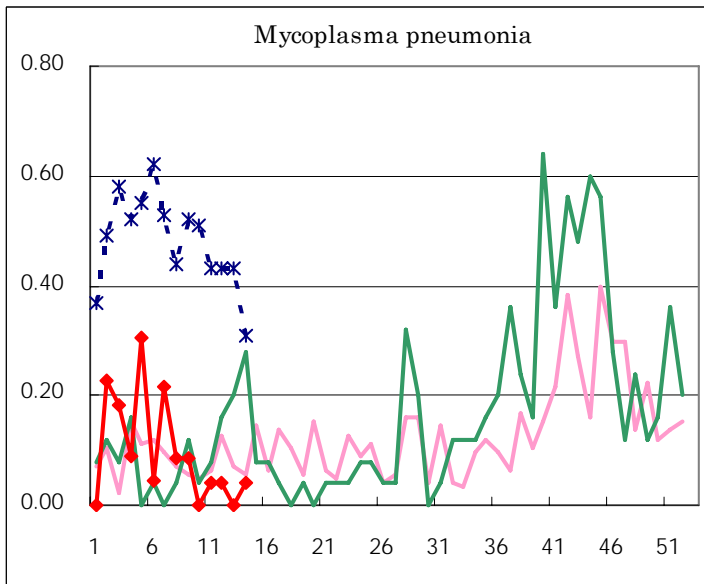
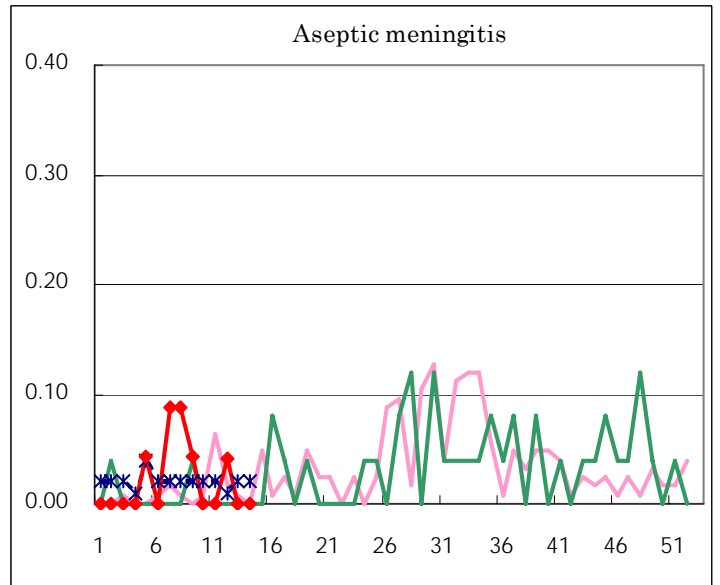
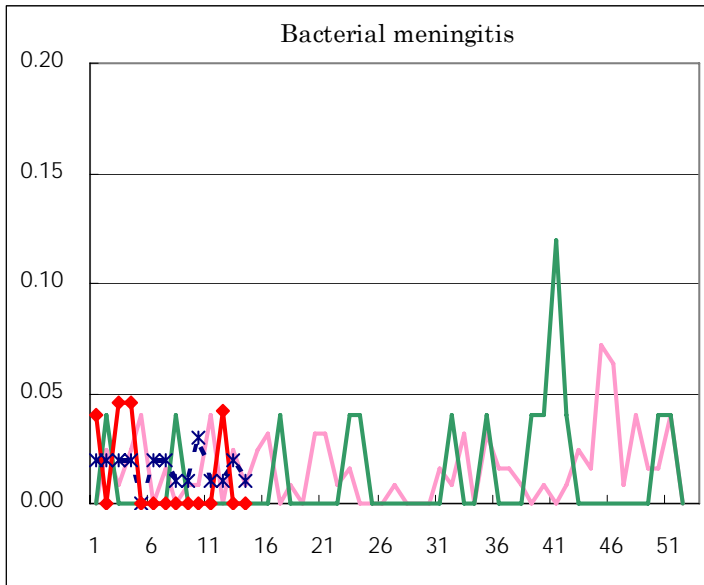
( Blank means 0. )

# Disease Trend Graph (weekly reported cases per fixed-point in comparison)









Tokyo Metropolitan Government  
**Infectious Disease Surveillance Center**