
INFECTIOUS DISEASES WEEKLY REPORT

TOKYO IDWR

Tokyo Metropolitan Infectious Disease Surveillance Center

26 April 2007 / Number 16

Surveillance System in Tokyo, Japan

The infectious diseases which all physicians must report

All physicians must report to health centers the incidence of the diseases which are shown at page one. Health centers electronically report the individual cases to Tokyo Metropolitan Infectious Disease Surveillance Center.

The infectious diseases required to be reported by the sentinels

The numbers of patients who visit the sentinel clinics or hospitals during a week are reported to health centers in Tokyo. And they electronically report the numbers to Tokyo Metropolitan Infectious Disease Surveillance Center. We have about 400 sentinel clinics and hospitals in Tokyo.

1st Week is early January and 52nd Week is end of December.

Tokyo Metropolitan Institute of Public Health
Epidemiological Information Office

TEL:81-3-3363-3213 FAX:81-3-5332-7365

e-mail:idsc@tokyo-eiken.go.jp

URL:idsc.tokyo-eiken.go.jp/

Number of patients with the diseases which all physicians must report

Category	Diseases	Tokyo					Japan	
		13th	14th	15th	16th	Cum 2007	16th	Cum 2007
I	Ebola hemorrhagic fever							
	Crimean-Congo hemorrhagic fever							
	Smallpox							
	South American hemorrhagic fever	/						
	Plague							
	Marburg disease							
	Lassa fever							
II	Acute poliomyelitis							
	Tuberculosis	/	33	49	32	114	154	555
	Diphtheria							
	Severe Acute Respiratory Syndrome(SARS)							
III	Cholera							3
	Shigellosis	1	2	4		24	12	159
	Enterohemorrhagic Escherichia coli infection			1	1	6	15	208
	Typhoid fever					1	1	10
	Paratyphoid fever					2	1	5
IV	Hepatitis E					1	1	18
	West Nile fever							
	Hepatitis A	1			1	10	2	51
	Echinococcosis					1		5
	Yellow fever							
	Psittacosis					1		7
	Omsk hemorrhagic fever	/						
	Relapsing fever							
	Kyasanur forest disease	/						
	Q fever							3
	Rabies							
	Coccidioidomycosis					1		1
	Monkeypox							
	Hemorrhagic fever with renal syndrome							
	Western equine encephalitis	/						
	Tick-borne encephalitis	/						
	Anthrax							
	Scrub typhus(Tsutsugamushi disease)					2		41
	Dengue fever					1	3	18
	Eastern equine encephalitis	/						
	Avian influenza virus infection							
	Nipah virus infection							
	Japanese spotted fever							
	Japanese encephalitis							1
	Epidemic typhus							
	Hantavirus pulmonary syndrome							
	Herpes B virus infection							
	Glanders	/						
	Brucellosis							
	Venezuelan equine encephalitis	/						
	Hendra virus infection	/						
	Botulism							1
	Malaria		1	2	1	7		14
Tularemia								
Lyme disease								
Lyssavirus infection(excluding rabies)								
Rift valley fever	/							
Melioidosis	/							
Legionellosis	1			1	6	5	109	
Leptospirosis			1		1		2	
Rocky mountain spotted fever	/							

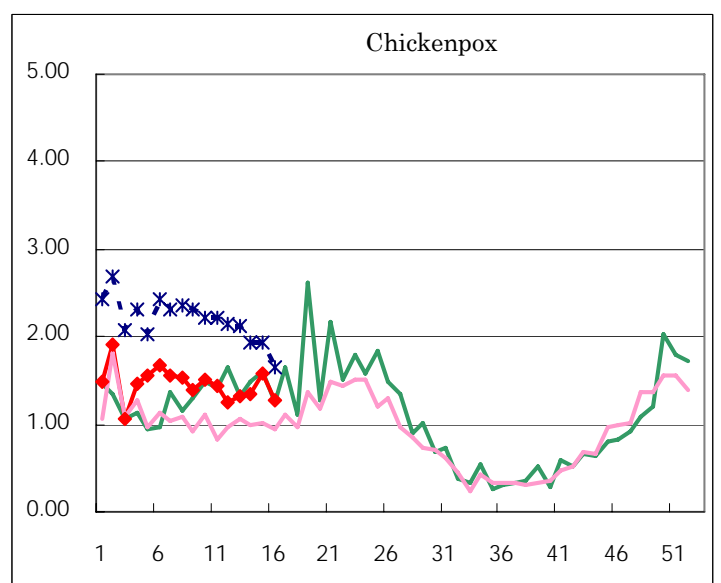
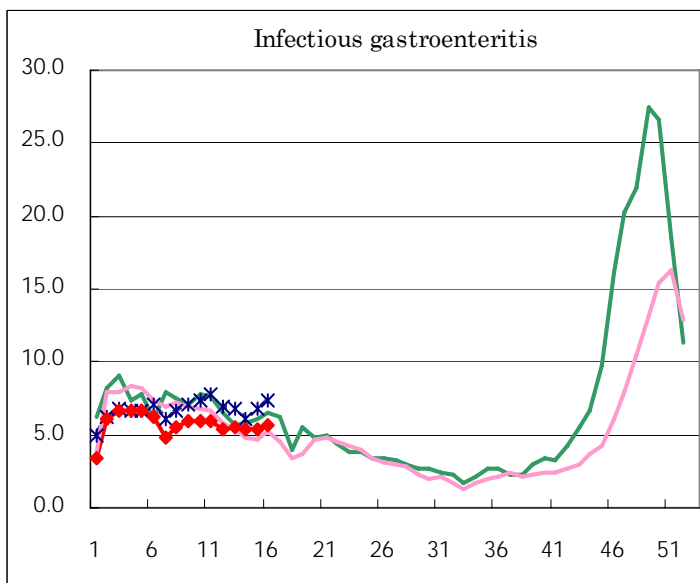
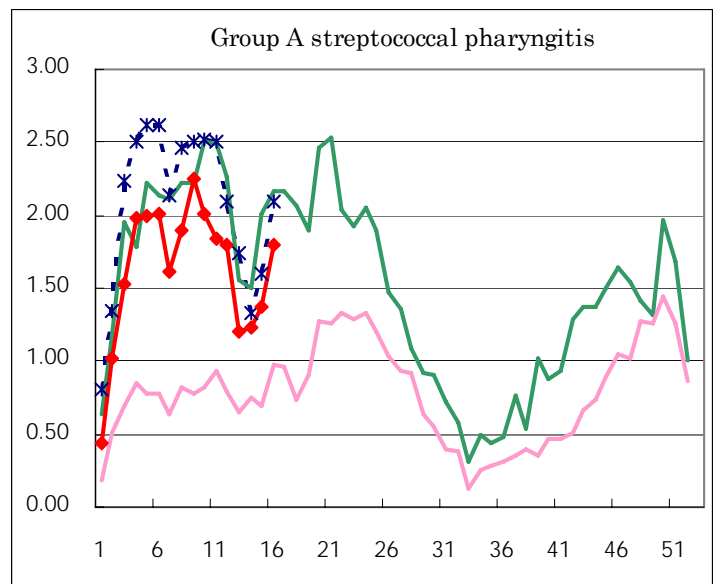
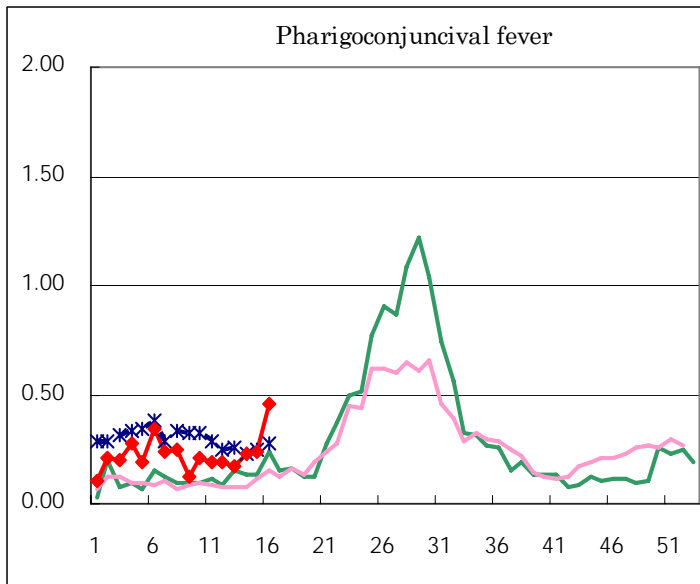
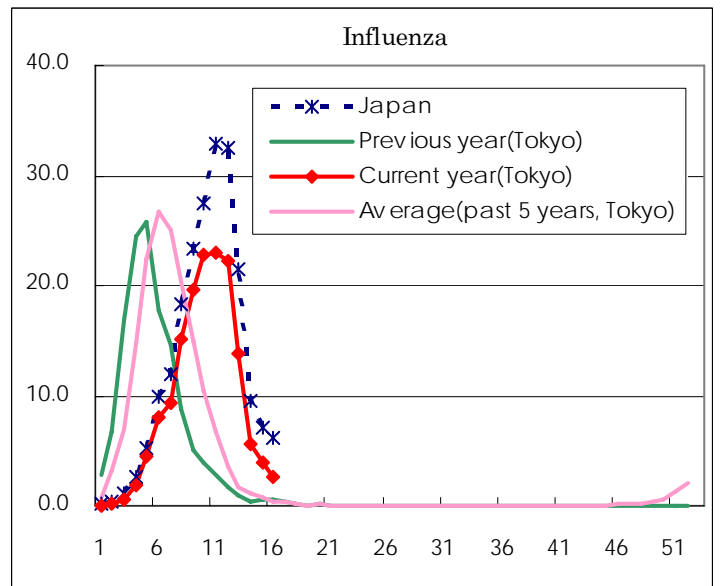
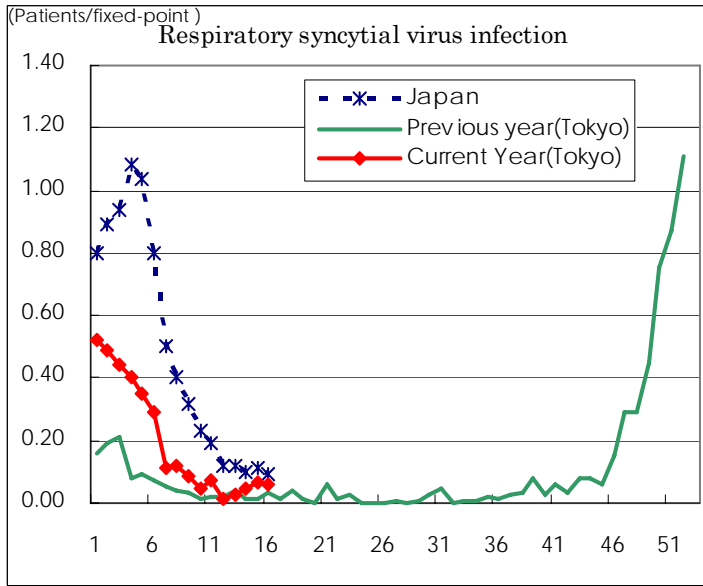
Category	Diseases	Tokyo					Japan	
		13th	14th	15th	16th	Cum 2007	16th	Cum 2007
V	Amebiasis	3		4	1	45	9	221
	Viral hepatitis(excluding hepatitis A and E)	1		2	1	13	1	43
	Acute encephalitis(excluding JE and WNE)		1	1		2	1	66
	Cryptosporidiosis							1
	Creutzfeldt-Jakob disease		1			3	1	50
	Severe invasive streptococcal infections(TSLs)					2		33
	Acquired immunodeficiency syndrome (AIDS)	11	10	14	6	142	17	373
	Giardiasis	1	1			5		13
	Meningococcal meningitis							5
	Congenital rubella syndrome							
	Syphilis	2	2	1	4	31	5	140
	Tetanus							16
	Vancomycin-resistant S. aureus infection							
	Vancomycin-resistant Enterococcus infection	2		1		8		21
designated	Influenza (H5N1)							

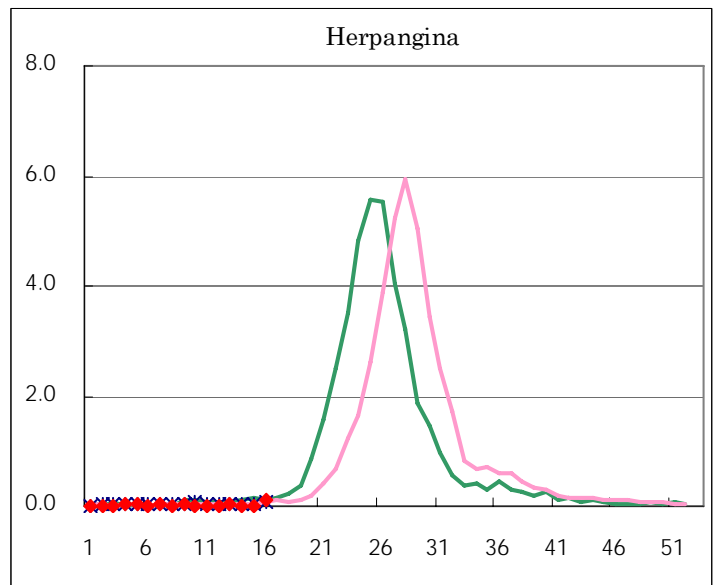
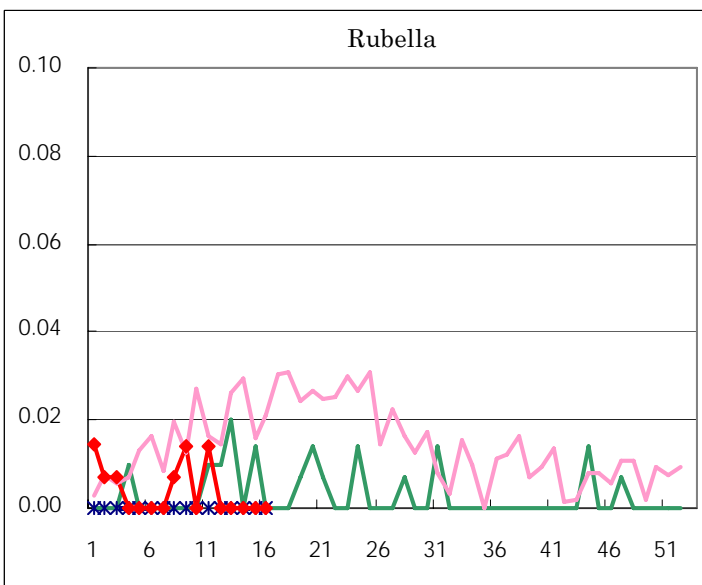
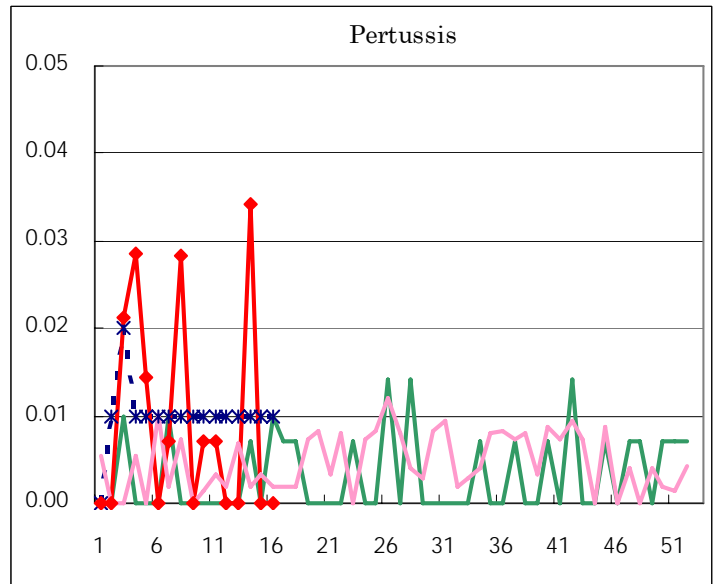
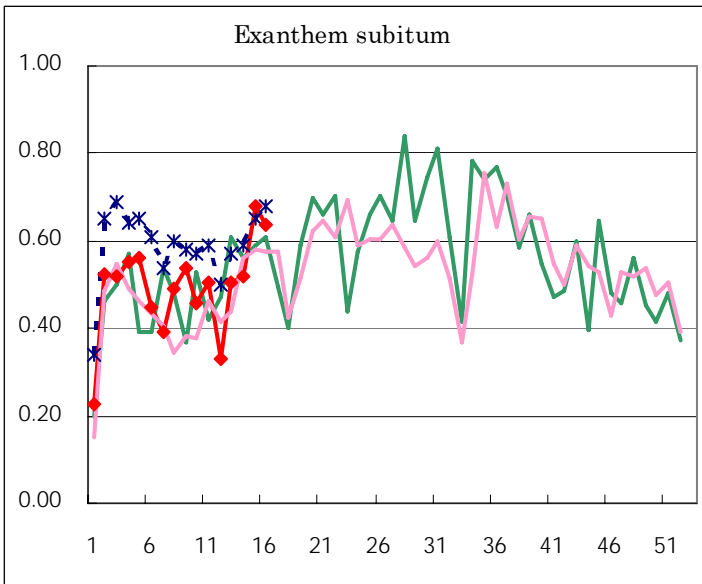
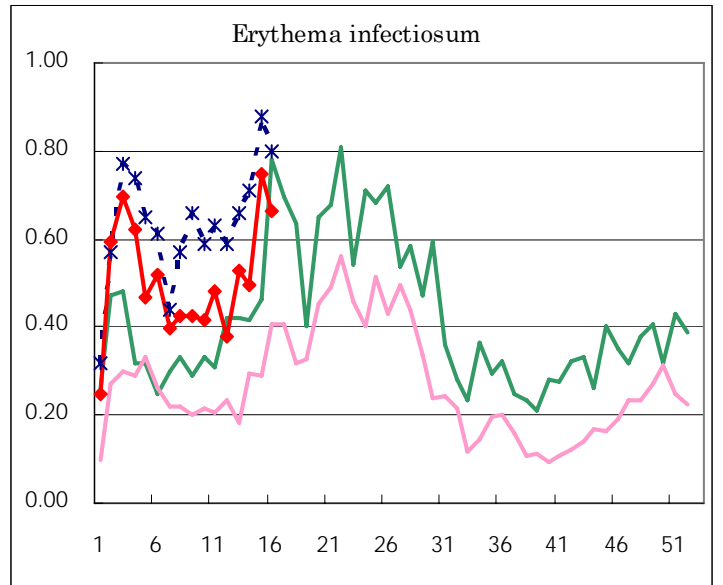
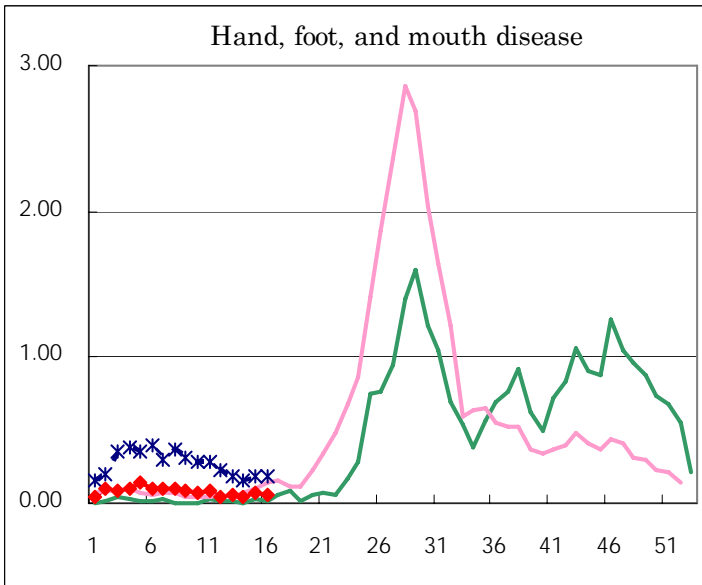
Number of patients with the diseases to be reported
by the designated clinics and hospitals

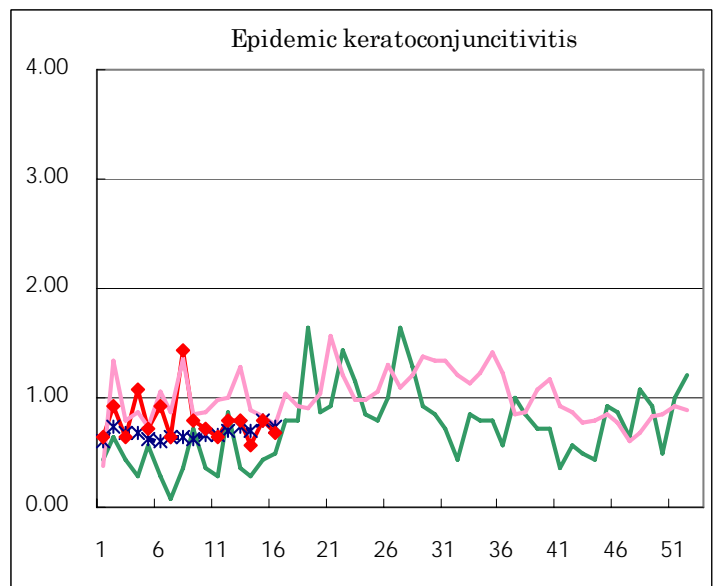
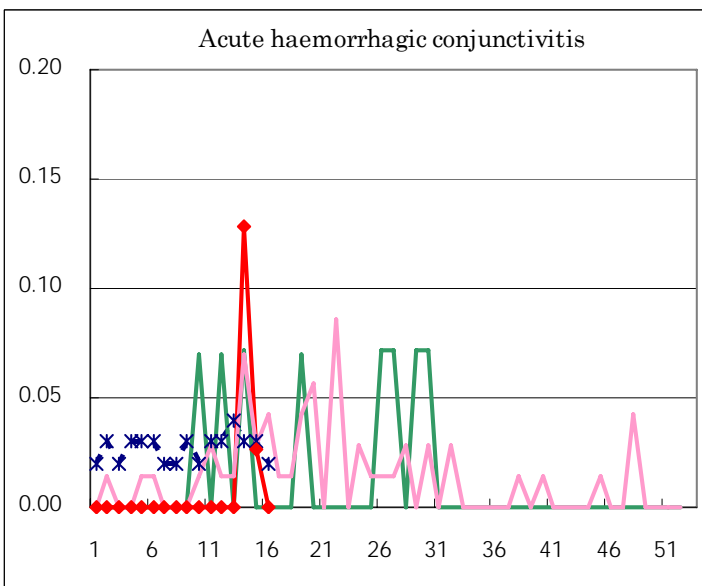
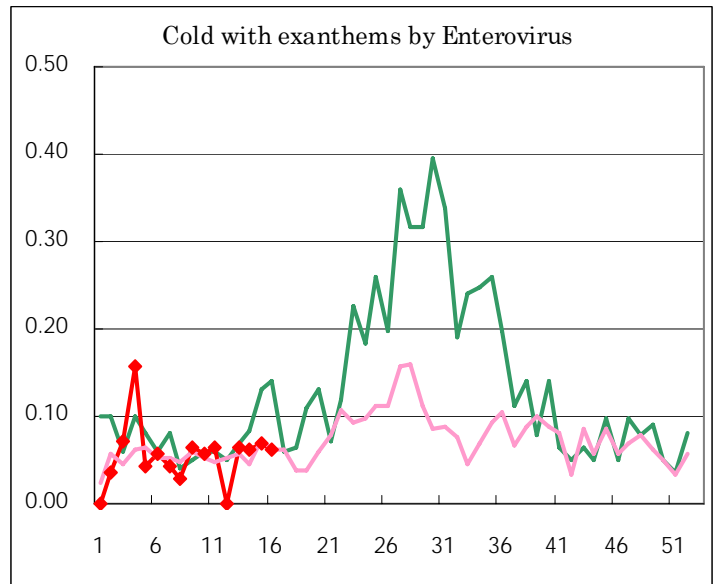
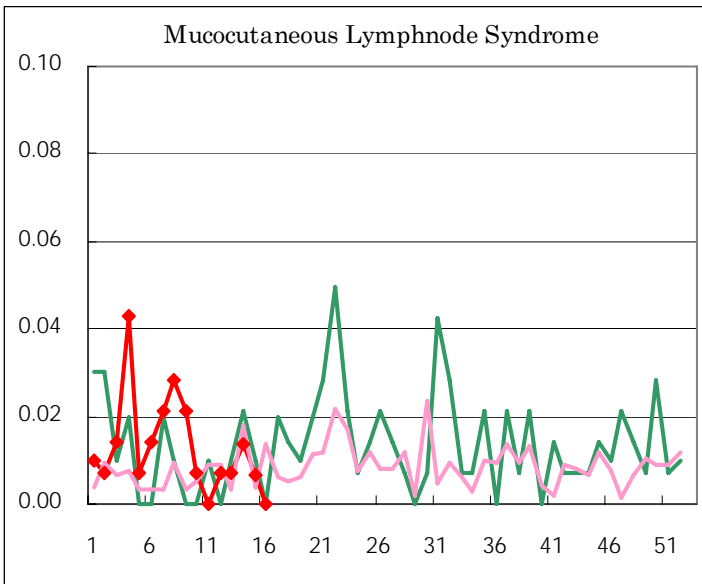
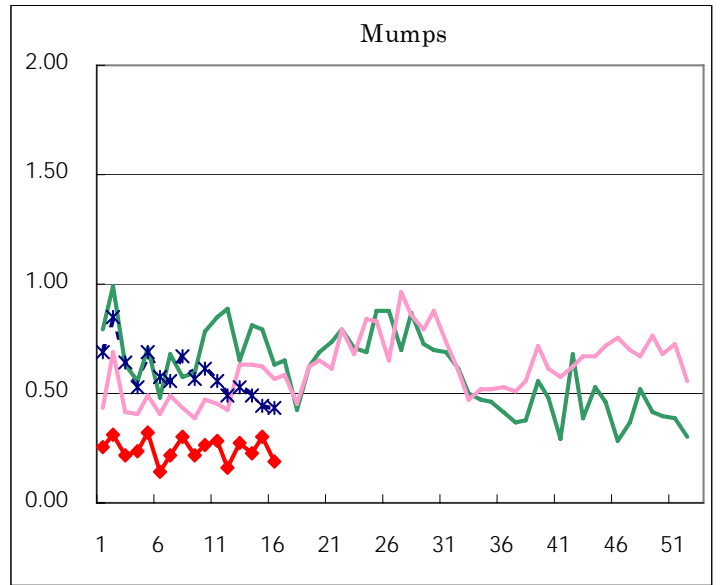
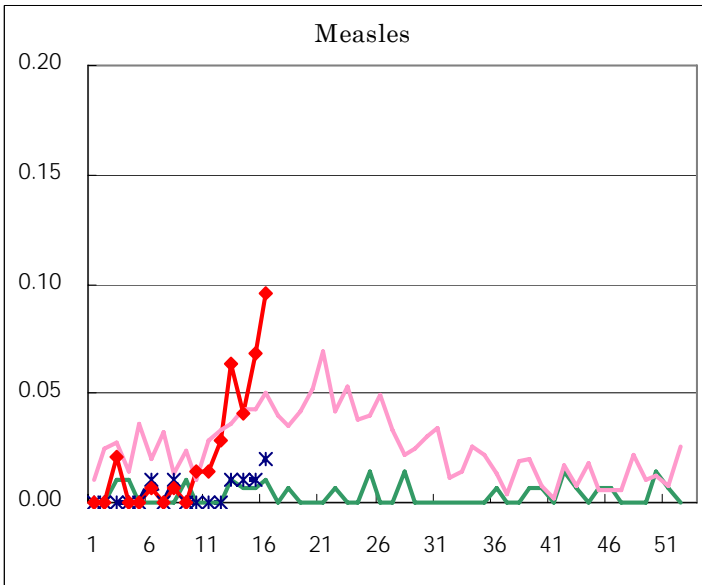
Diseases	2007				4 wks total	Cum 2007
	13th	14th	15th	16th		
Respiratory syncytial virus infection	4	7	10	9	30	442
Influenza	3,872	1,601	1,109	751	7,333	42,932
Pharyngoconjunctival fever	24	34	35	67	160	517
Group A streptococcal pharyngitis	171	180	201	263	815	3,685
Infectious gastroenteritis	779	777	791	825	3,172	12,909
Chickenpox	189	195	231	187	802	3,318
Hand, foot, and mouth disease	9	7	10	8	34	177
Erythema infectiosum	75	72	110	97	354	1,152
Exanthem subitum	72	76	100	93	341	1,122
Pertussis		5			5	21
Rubella						9
Herpangina	5	2	2	15	24	50
Measles	9	6	10	14	39	53
Mumps	39	33	44	27	143	554
Cold with exanthems by Enterovirus	9	9	10	9	37	124
Mucocutaneous Lymphnode Syndrome	1	2	1		4	30
Acute hemorrhagic conjunctivitis		5	1		6	6
Epidemic keratoconjunctivitis	11	22	30	26	89	227
Bacterial meningitis			1		1	5
Aseptic meningitis						8
Mycoplasma pneumonia		1	1	4	6	36
Chlamydial pneumonia (excluding psittacosis)				1	1	2
Measles in adults	8	2	7	12	29	38

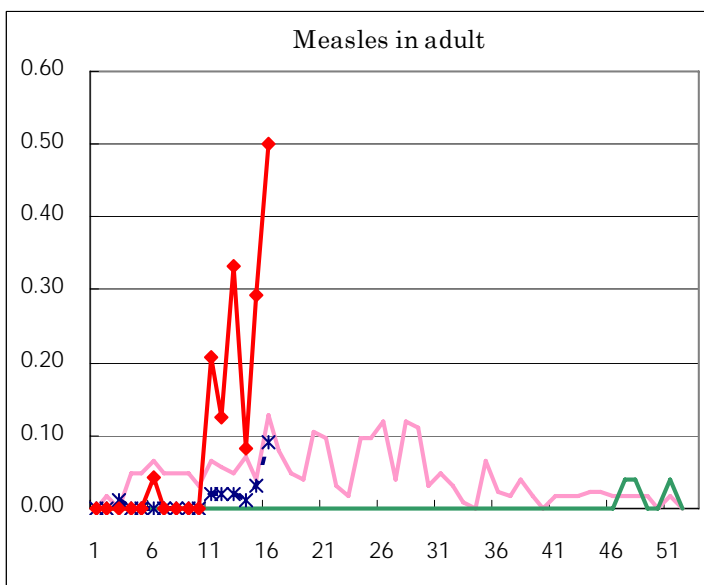
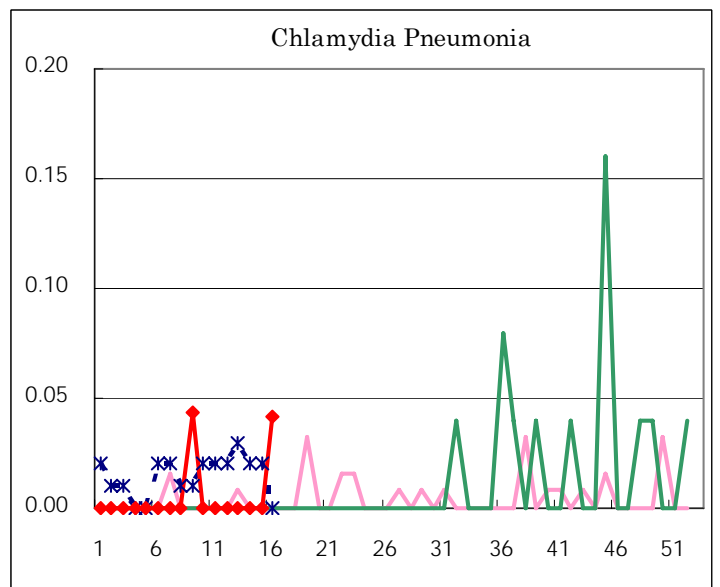
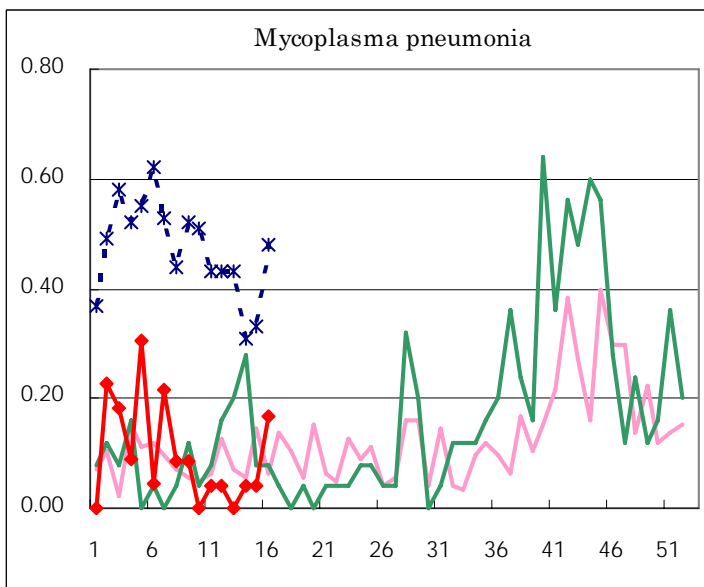
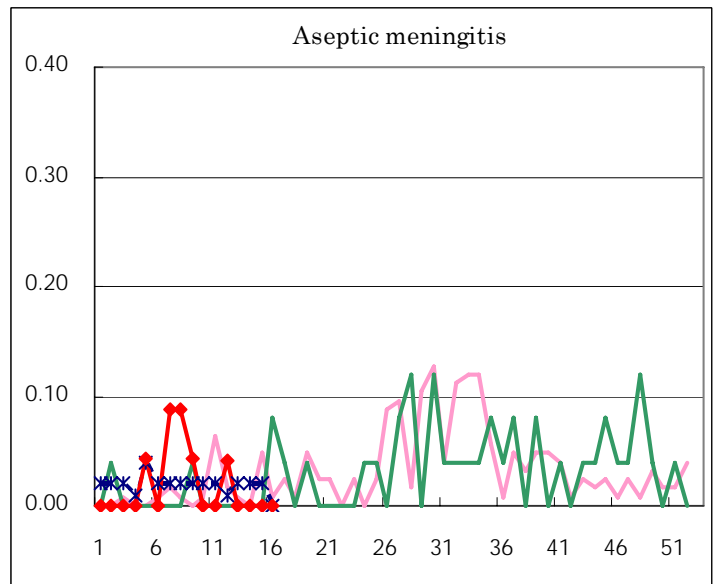
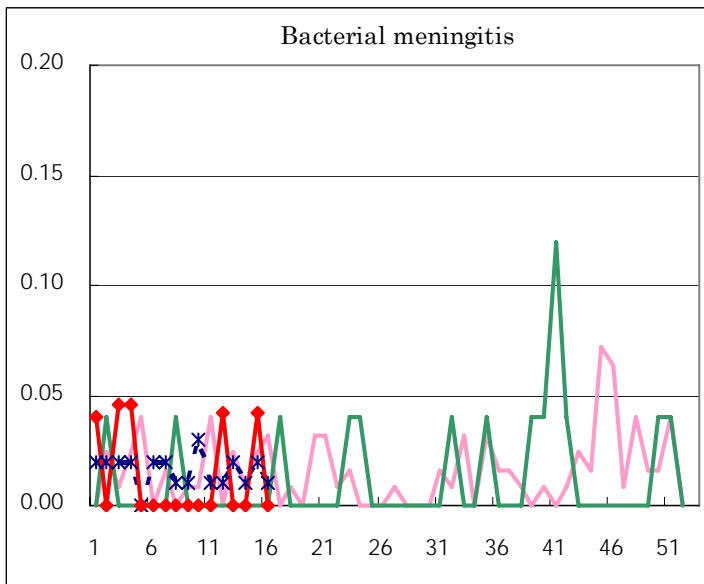
(Blank means 0.)

Disease Trend Graph (weekly reported cases per fixed-point in comparison)









Tokyo Metropolitan Government
Infectious Disease Surveillance Center