

---

INFECTIOUS DISEASES WEEKLY REPORT

# TOKYO IDWR

Tokyo Metropolitan Infectious Disease Surveillance Center

## 7 May 2007 / Number 17

### Surveillance System in Tokyo, Japan

The infectious diseases which all physicians must report

All physicians must report to health centers the incidence of the diseases which are shown at page one. Health centers electronically report the individual cases to Tokyo Metropolitan Infectious Disease Surveillance Center.

The infectious diseases required to be reported by the sentinels

The numbers of patients who visit the sentinel clinics or hospitals during a week are reported to health centers in Tokyo. And they electronically report the numbers to Tokyo Metropolitan Infectious Disease Surveillance Center. We have about 400 sentinel clinics and hospitals in Tokyo.

1st Week is early January and 52nd Week is end of December.

Tokyo Metropolitan Institute of Public Health  
Epidemiological Information Office

TEL:81-3-3363-3213 FAX:81-3-5332-7365

e-mail:[idsc@tokyo-eiken.go.jp](mailto:idsc@tokyo-eiken.go.jp)

URL:[idsc.tokyo-eiken.go.jp/](http://idsc.tokyo-eiken.go.jp/)

---

## Number of patients with the diseases which all physicians must report

Category	Diseases	Tokyo					Japan	
		14th	15th	16th	17th	Cum 2007	17th	Cum 2007
I	Ebola hemorrhagic fever							
	Crimean-Congo hemorrhagic fever							
	Smallpox							
	South American hemorrhagic fever							
	Plague							
	Marburg disease							
	Lassa fever							
II	Acute poliomyelitis							
	Tuberculosis	33	49	32	30	159	200	913
	Diphtheria							
	Severe Acute Respiratory Syndrome(SARS)							
III	Cholera						1	4
	Shigellosis	2	4			23	3	166
	Enterohemorrhagic Escherichia coli infection		1	1	3	9	25	236
	Typhoid fever				1	2		11
	Paratyphoid fever				1	3	1	6
IV	Hepatitis E					1		18
	West Nile fever							
	Hepatitis A			1		10	4	58
	Echinococcosis					1		5
	Yellow fever							
	Psittacosis					1		8
	Omsk hemorrhagic fever							
	Relapsing fever							
	Kyasanur forest disease							
	Q fever							3
	Rabies							
	Coccidioidomycosis					1	1	2
	Monkeypox							
	Hemorrhagic fever with renal syndrome							
	Western equine encephalitis							
	Tick-borne encephalitis							
	Anthrax							
	Scrub typhus(Tsutsugamushi disease)					2	4	45
	Dengue fever					1	1	19
	Eastern equine encephalitis							
	Avian influenza virus infection							
	Nipah virus infection							
	Japanese spotted fever							
	Japanese encephalitis							1
	Epidemic typhus							
	Hantavirus pulmonary syndrome							
	Herpes B virus infection							
	Glanders							
	Brucellosis						2	2
	Venezuelan equine encephalitis							
	Hendra virus infection							
	Botulism							1
	Malaria	1	2	1	1	8	1	15
Tularemia								
Lyme disease								
Lyssavirus infection(excluding rabies)								
Rift valley fever								
Melioidosis								
Legionellosis			1		6	9	122	
Leptospirosis		1			2	1	3	
Rocky mountain spotted fever								

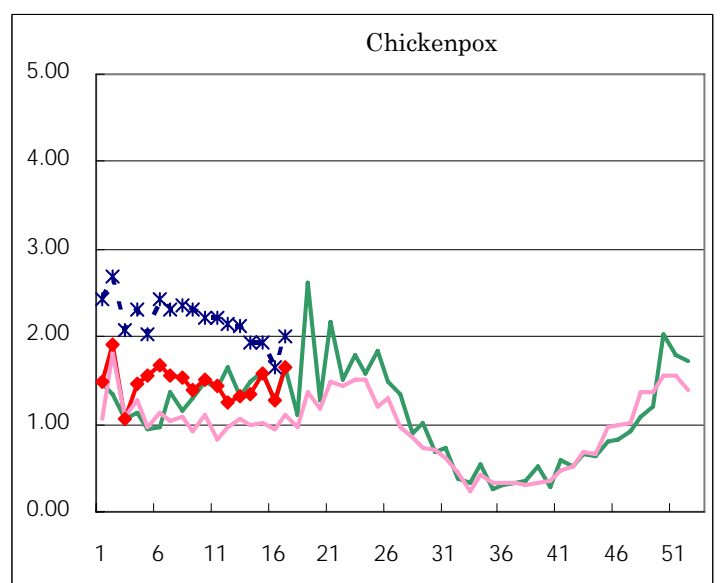
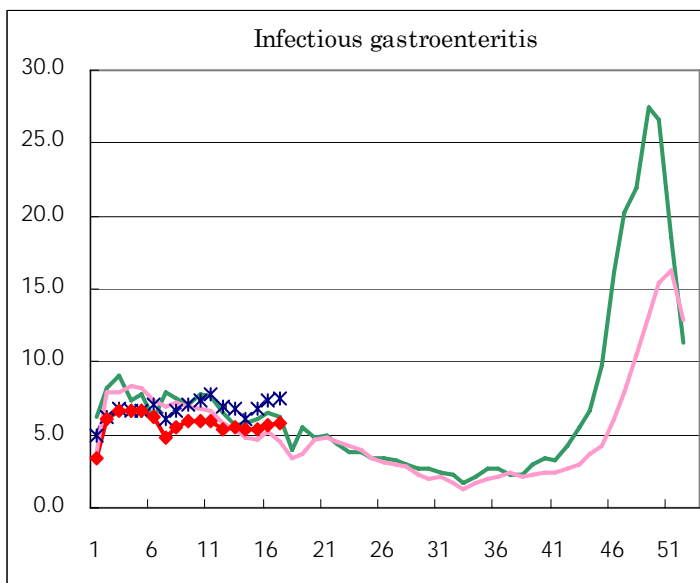
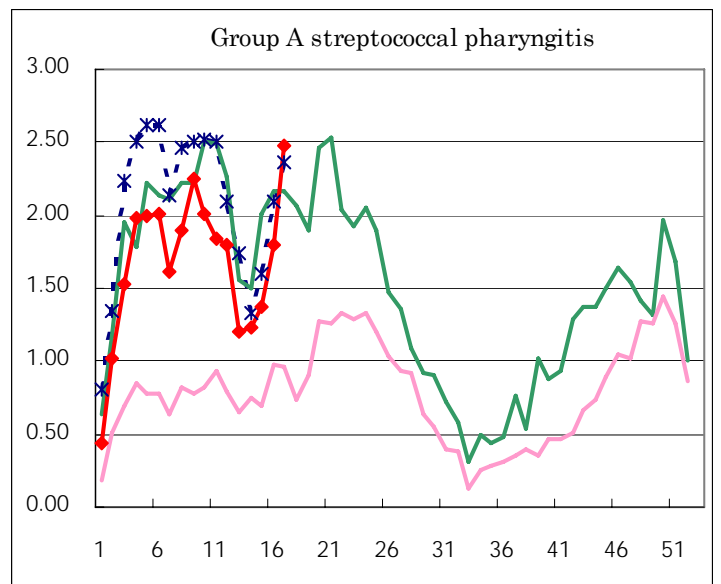
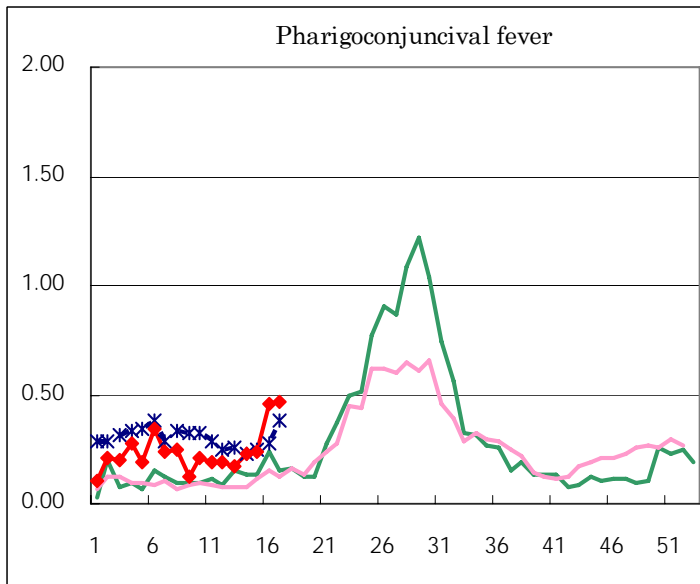
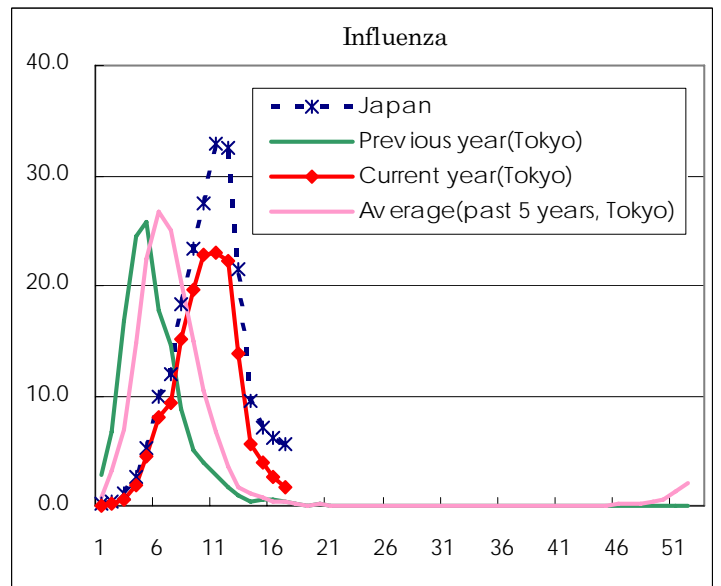
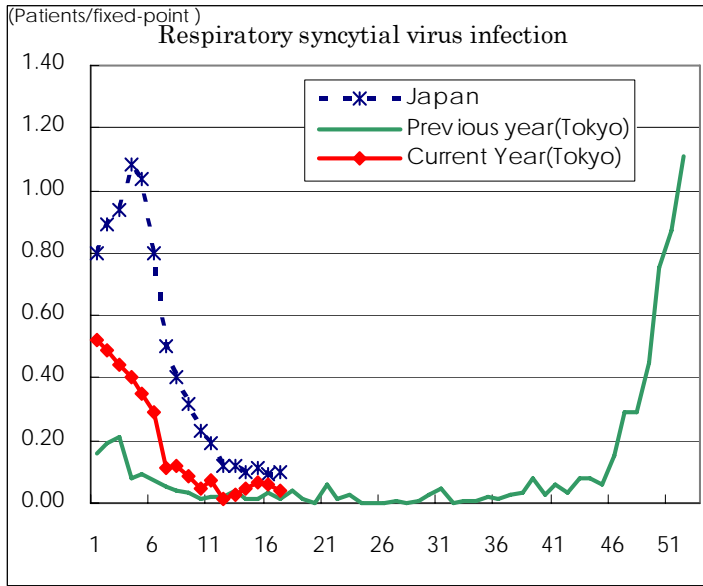
Category	Diseases	Tokyo					Japan	
		14th	15th	16th	17th	Cum 2007	17th	Cum 2007
V	Amebiasis		4	1	3	48	9	239
	Viral hepatitis(excluding hepatitis A and E)		2	1	1	14	2	51
	Acute encephalitis(excluding JE and WNE)	1	1			2	2	69
	Cryptosporidiosis						1	2
	Creutzfeldt-Jakob disease	1			1	4		53
	Severe invasive streptococcal infections(TSLS)					2	1	35
	Acquired immunodeficiency syndrome (AIDS)	10	14	6	7	149	8	400
	Giardiasis	1			1	6	2	16
	Meningococcal meningitis							5
	Congenital rubella syndrome							
	Syphilis	2	1	4	4	35	8	158
	Tetanus						1	17
	Vancomycin-resistant S. aureus infection							
	Vancomycin-resistant Enterococcus infection		1			8		22
designated	Influenza (H5N1)							

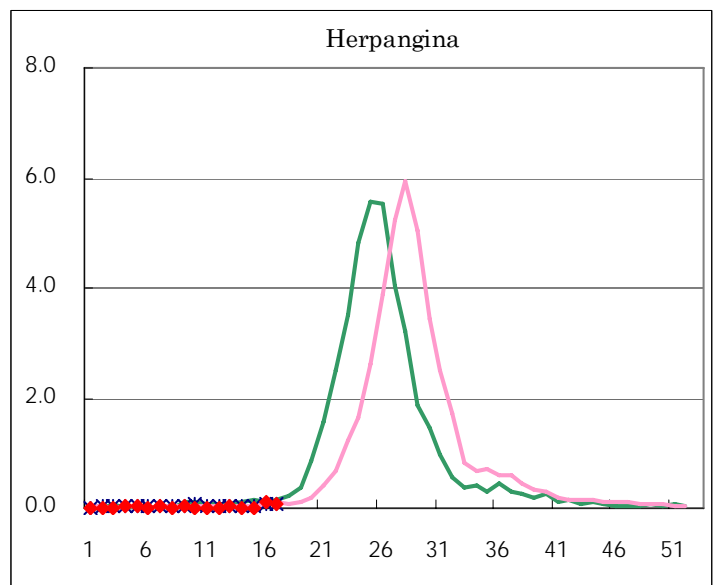
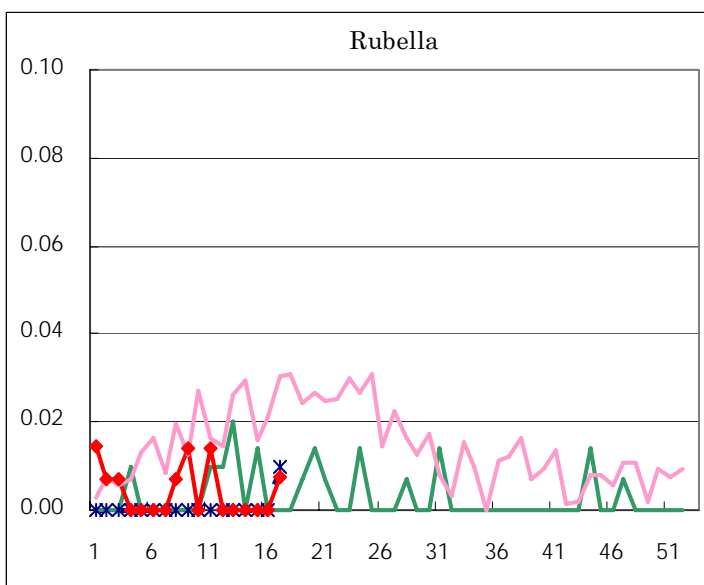
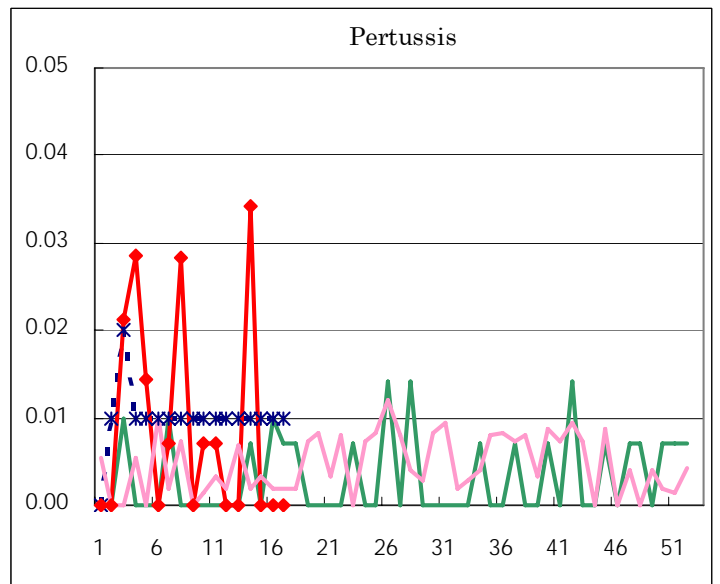
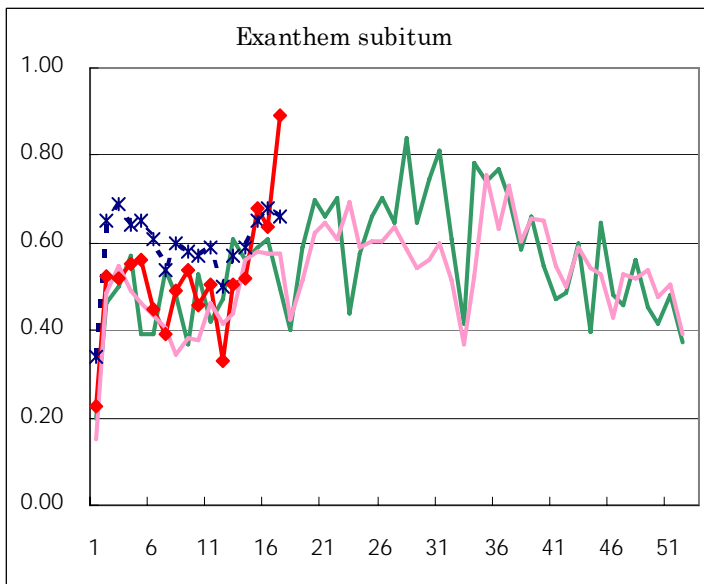
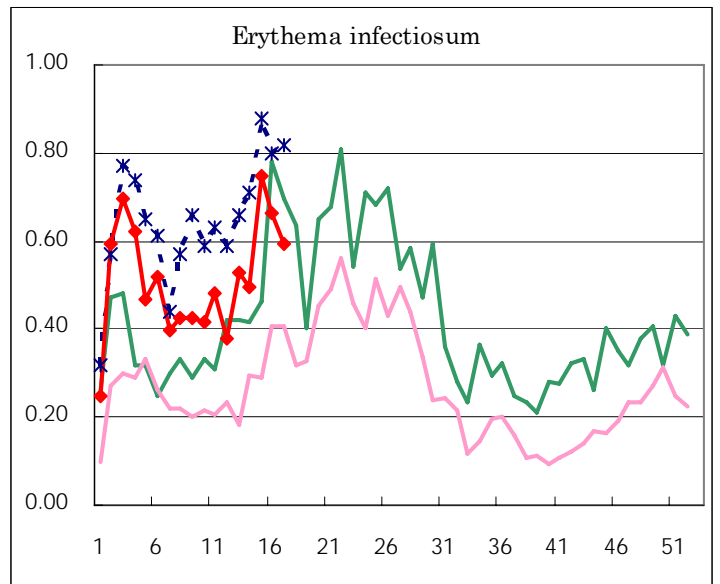
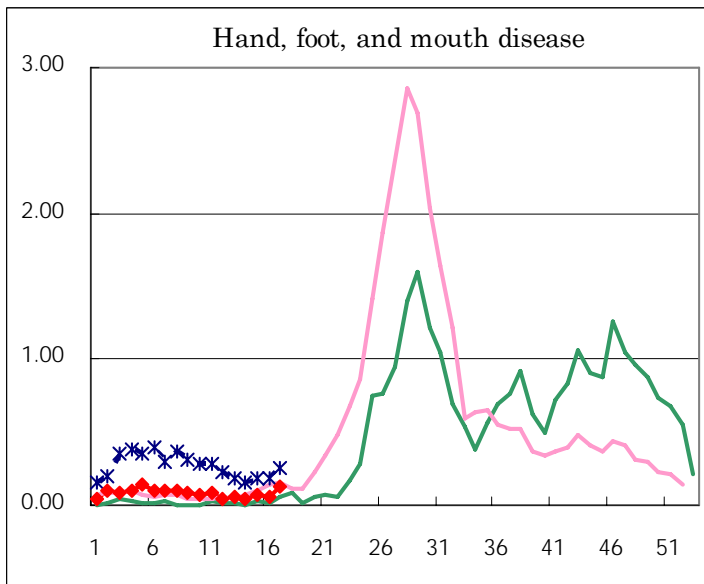
Number of patients with the diseases to be reported  
by the designated clinics and hospitals

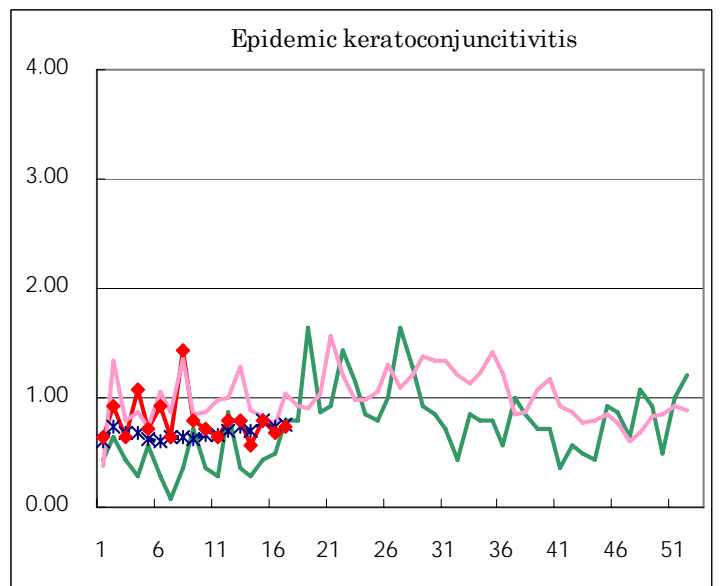
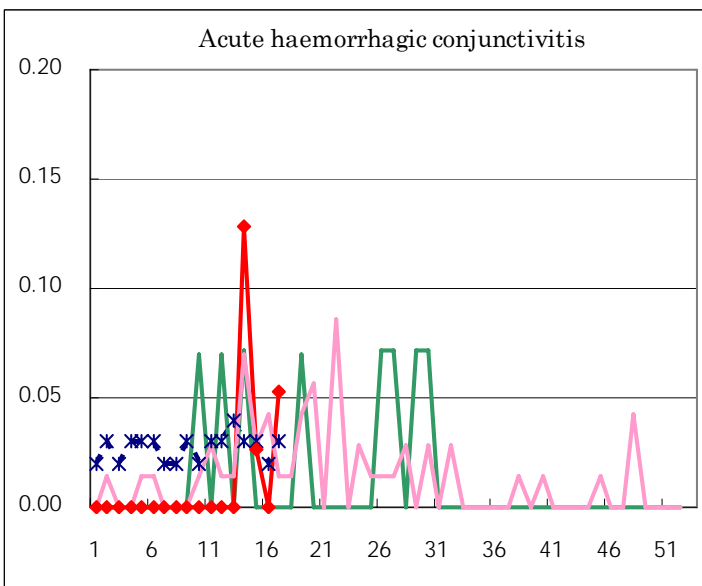
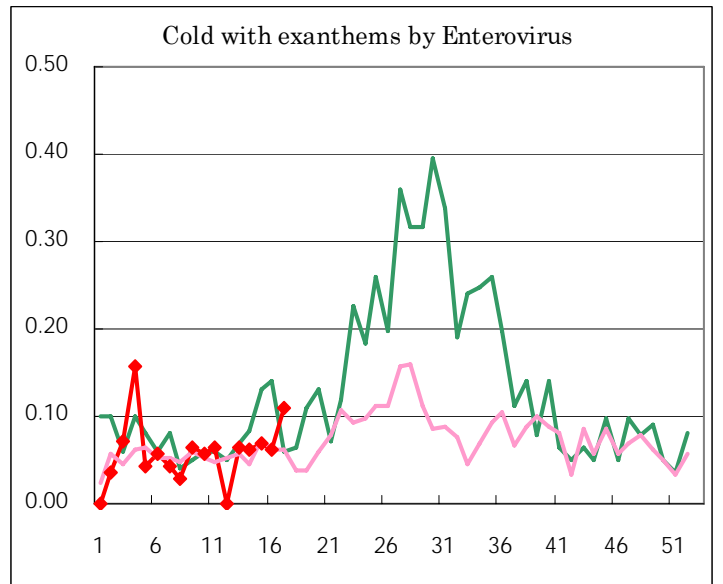
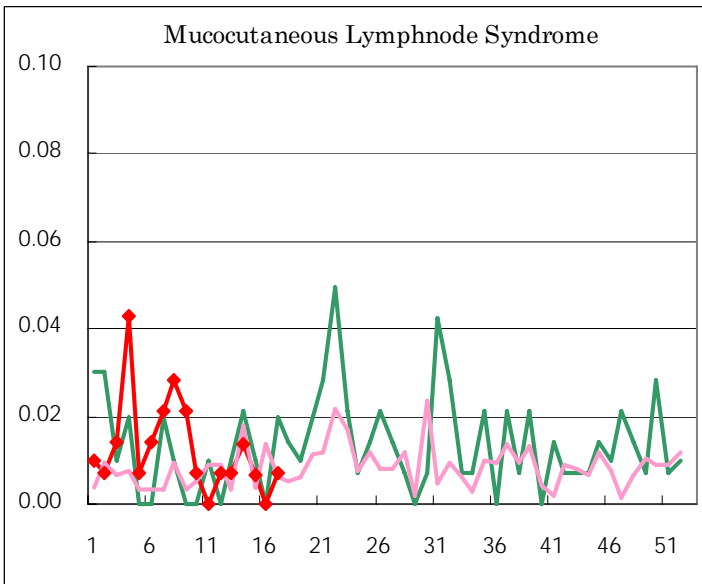
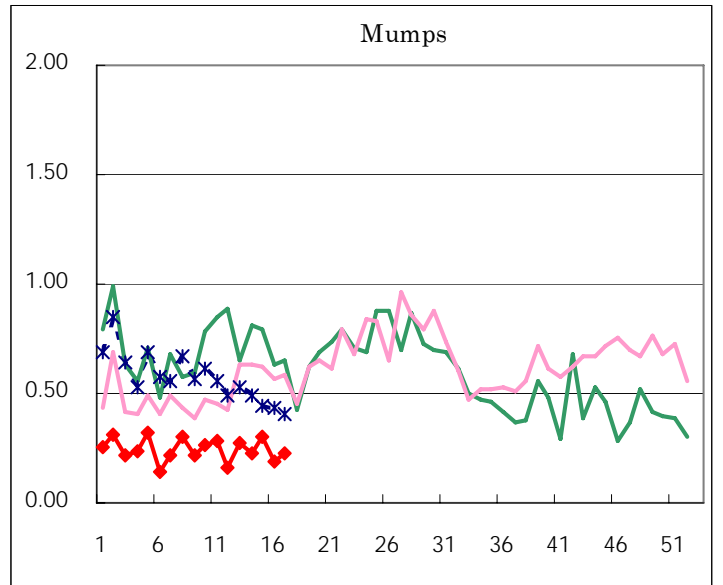
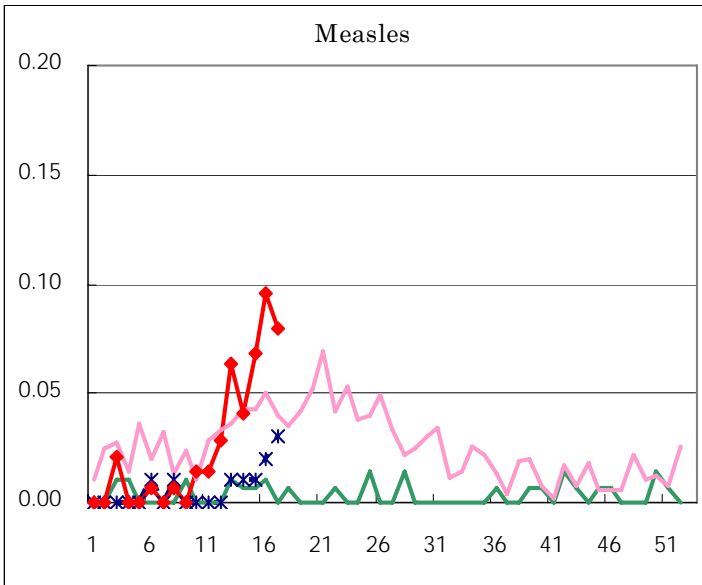
Diseases	2007				4wks total	Cum 2007
	14th	15th	16th	17th		
Respiratory syncytial virus infection	7	10	9	6	32	448
Influenza	1,601	1,109	751	451	3,912	43383
Pharyngoconjunctival fever	34	35	67	65	201	582
Group A streptococcal pharyngitis	180	201	263	342	986	4027
Infectious gastroenteritis	777	791	825	794	3,187	13703
Chickenpox	195	231	187	228	841	3546
Hand, foot, and mouth disease	7	10	8	17	42	194
Erythema infectiosum	72	110	97	82	361	1234
Exanthem subitum	76	100	93	123	392	1245
Pertussis	5				5	21
Rubella				1	1	10
Herpangina	2	2	15	12	31	62
Measles	6	10	14	11	41	64
Mumps	33	44	27	31	135	585
Cold with exanthems by Enterovirus	9	10	9	15	43	139
Mucocutaneous Lymphnode Syndrome	2	1		1	4	31
Acute hemorrhagic conjunctivitis	5	1		2	8	8
Epidemic keratoconjunctivitis	22	30	26	28	106	255
Bacterial meningitis		1			1	5
Aseptic meningitis				1	1	9
Mycoplasma pneumonia	1	1	4	3	9	39
Chlamydial pneumonia (excluding psittacosis)			1		1	2
Measles in adults	2	7	12	15	36	53

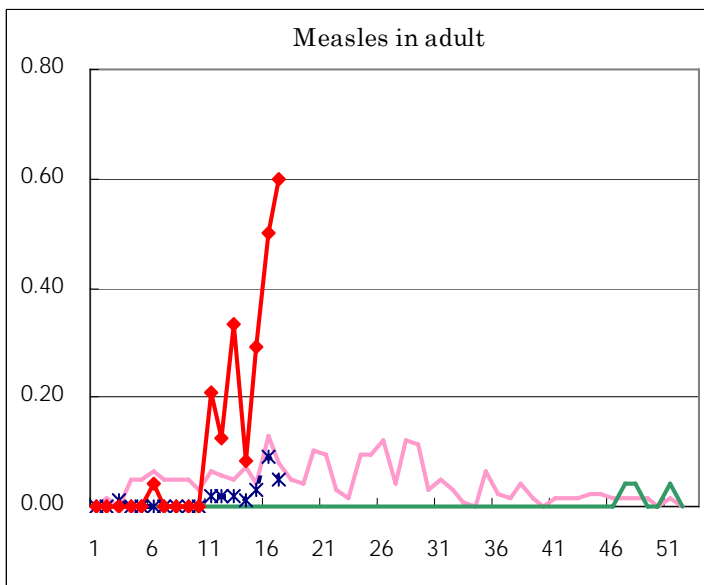
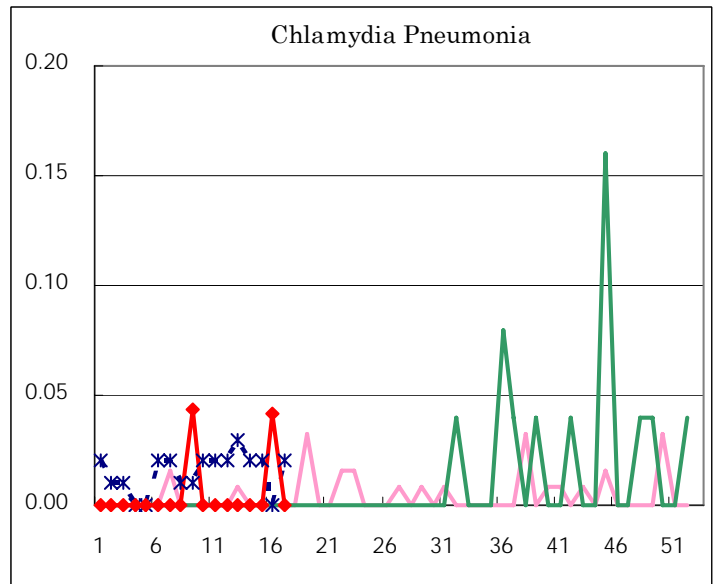
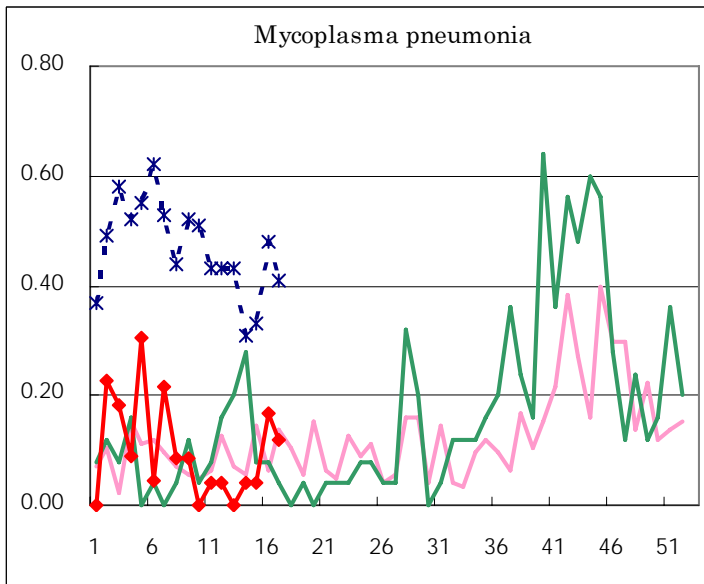
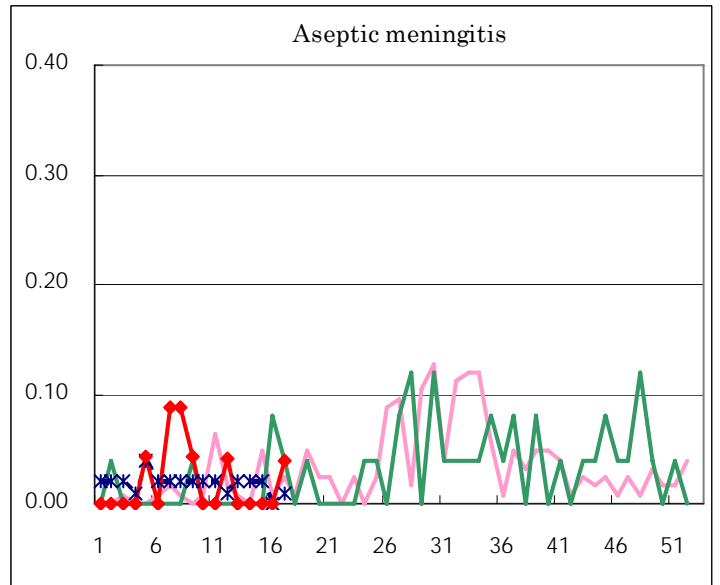
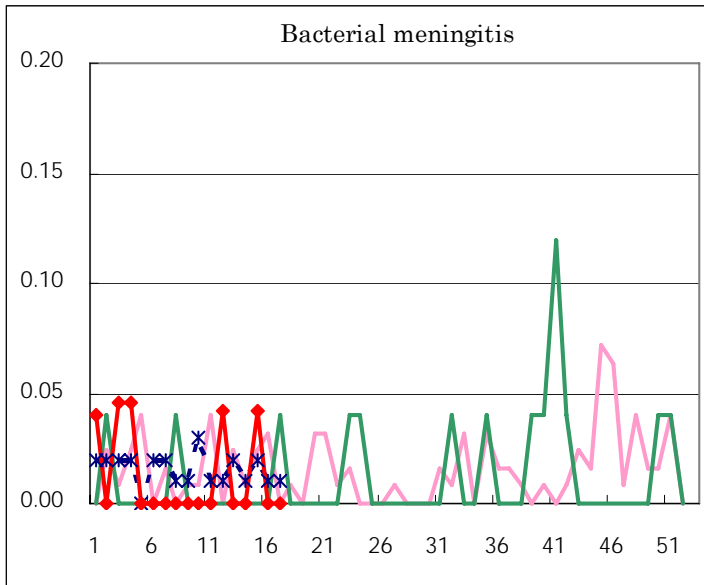
( Blank means 0. )

# Disease Trend Graph (weekly reported cases per fixed-point in comparison)









Tokyo Metropolitan Government  
**Infectious Disease Surveillance Center**