
INFECTIOUS DISEASES WEEKLY REPORT

TOKYO IDWR

Tokyo Metropolitan Infectious Disease Surveillance Center

10 May 2007 / Number 18

Surveillance System in Tokyo, Japan

The infectious diseases which all physicians must report

All physicians must report to health centers the incidence of the diseases which are shown at page one. Health centers electronically report the individual cases to Tokyo Metropolitan Infectious Disease Surveillance Center.

The infectious diseases required to be reported by the sentinels

The numbers of patients who visit the sentinel clinics or hospitals during a week are reported to health centers in Tokyo. And they electronically report the numbers to Tokyo Metropolitan Infectious Disease Surveillance Center. We have about 400 sentinel clinics and hospitals in Tokyo.

1st Week is early January and 52nd Week is end of December.

Tokyo Metropolitan Institute of Public Health
Epidemiological Information Office

TEL:81-3-3363-3213 FAX:81-3-5332-7365

e-mail:idsc@tokyo-eiken.go.jp

URL:idsc.tokyo-eiken.go.jp/

Number of patients with the diseases which all physicians must report

Category	Diseases	Tokyo					Japan	
		15th	16th	17th	18th	Cum 2007	18th	Cum 2007
I	Ebola hemorrhagic fever							
	Crimean-Congo hemorrhagic fever							
	Smallpox							
	South American hemorrhagic fever							
	Plague							
	Marburg disease							
	Lassa fever							
II	Acute poliomyelitis							
	Tuberculosis	56	38	33	21	190	67	1091
	Diphtheria							
	Severe Acute Respiratory Syndrome(SARS)							
III	Cholera						1	5
	Shigellosis	3				23		167
	Enterohemorrhagic Escherichia coli infection	1	1	3	2	11	23	264
	Typhoid fever			1		2	1	12
	Paratyphoid fever			1		3		6
IV	Hepatitis E					1		18
	West Nile fever							
	Hepatitis A		1			10		58
	Echinococcosis					1		5
	Yellow fever							
	Psittacosis					1		8
	Omsk hemorrhagic fever							
	Relapsing fever							
	Kyasanur forest disease							
	Q fever							3
	Rabies							
	Coccidioidomycosis					1		2
	Monkeypox							
	Hemorrhagic fever with renal syndrome							
	Western equine encephalitis							
	Tick-borne encephalitis							
	Anthrax							
	Scrub typhus(Tsutsugamushi disease)					2	2	47
	Dengue fever					1		19
	Eastern equine encephalitis							
	Avian influenza virus infection							
	Nipah virus infection							
	Japanese spotted fever							
	Japanese encephalitis							1
	Epidemic typhus							
	Hantavirus pulmonary syndrome							
	Herpes B virus infection							
	Glanders							
	Brucellosis							2
	Venezuelan equine encephalitis							
	Hendra virus infection							
	Botulism							1
	Malaria	2	1	1		8		15
Tularemia								
Lyme disease								
Lyssavirus infection(excluding rabies)								
Rift valley fever								
Melioidosis								
Legionellosis		1			6	6	130	
Leptospirosis	1		1		2		3	
Rocky mountain spotted fever								

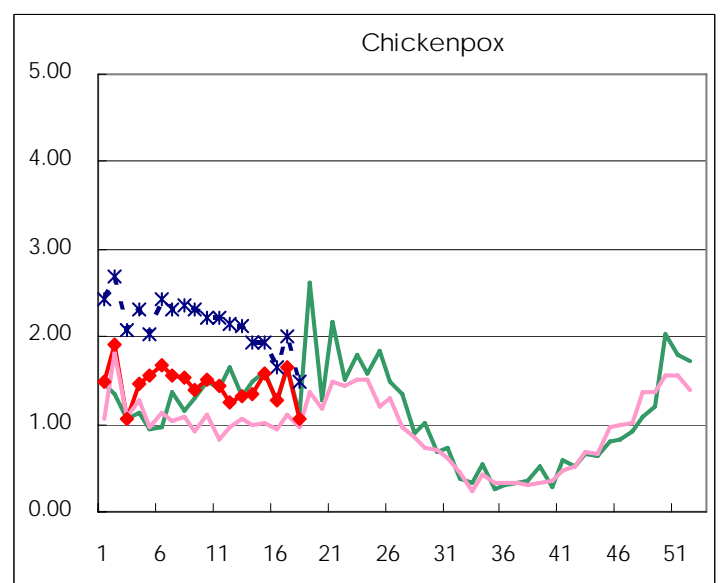
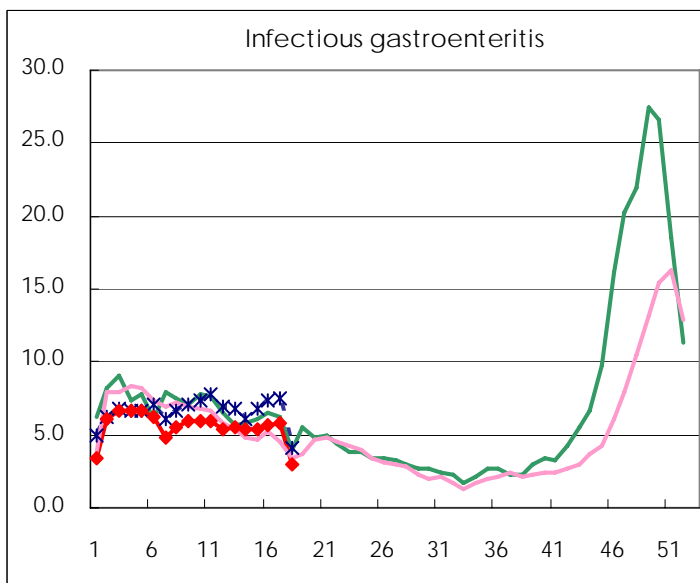
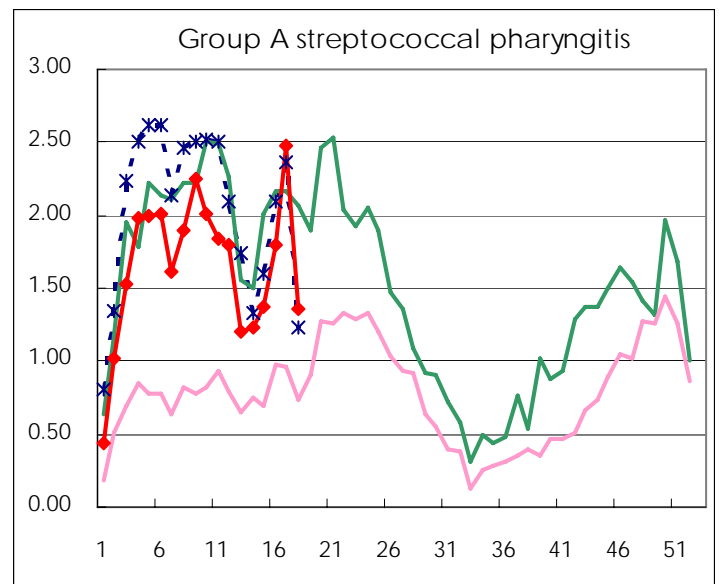
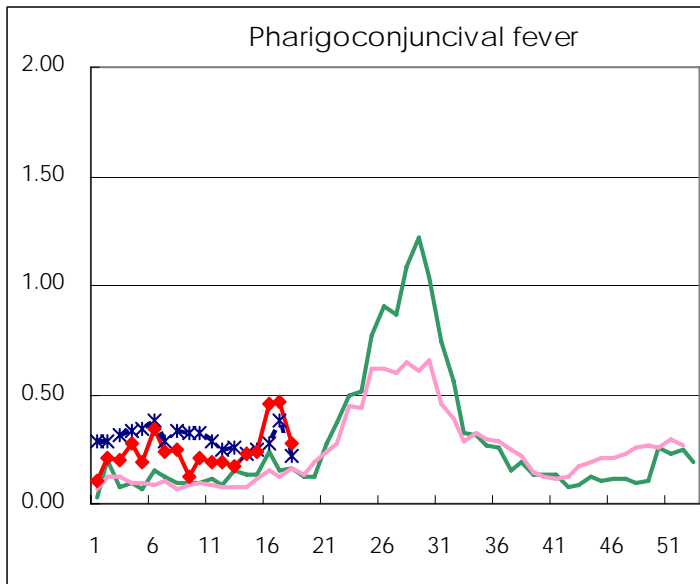
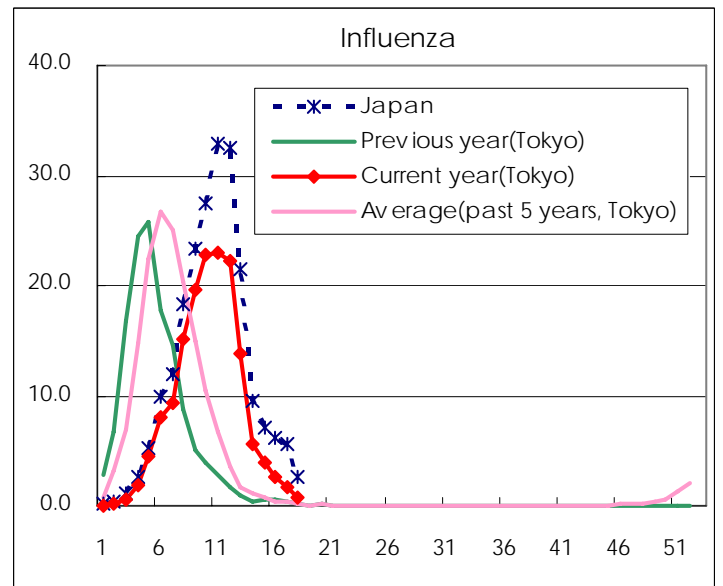
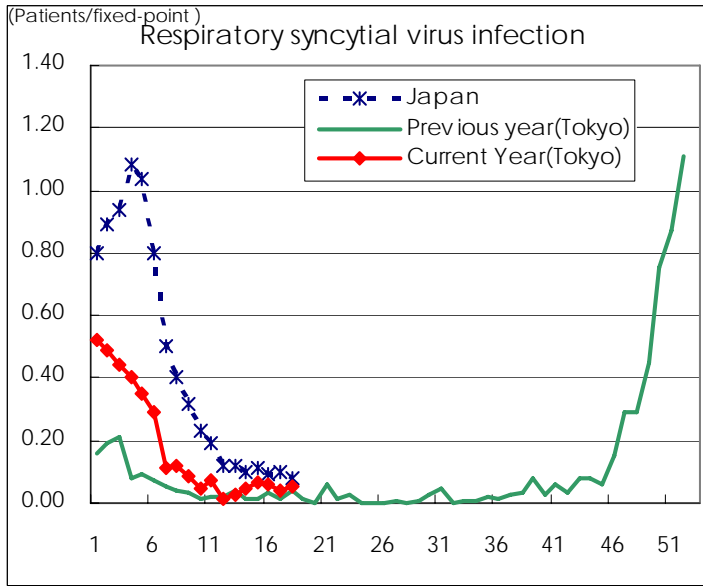
Category	Diseases	Tokyo					Japan	
		15th	16th	17th	18th	Cum 2007	18th	Cum 2007
V	Amebiasis	4	1	3		48	4	247
	Viral hepatitis(excluding hepatitis A and E)	2	1	1		14		54
	Acute encephalitis(excluding JE and WNE)	1				2		69
	Cryptosporidiosis							2
	Creutzfeldt-Jakob disease			1		4		54
	Severe invasive streptococcal infections(TSLS)					2		36
	Acquired immunodeficiency syndrome (AIDS)	14	6	7	5	154	4	414
	Giardiasis			1		6		16
	Meningococcal meningitis							6
	Congenital rubella syndrome							
	Syphilis	1	4	5	1	37	3	166
	Tetanus						1	20
	Vancomycin-resistant S. aureus infection							
	Vancomycin-resistant Enterococcus infection					7	1	27
designated	Influenza (H5N1)							

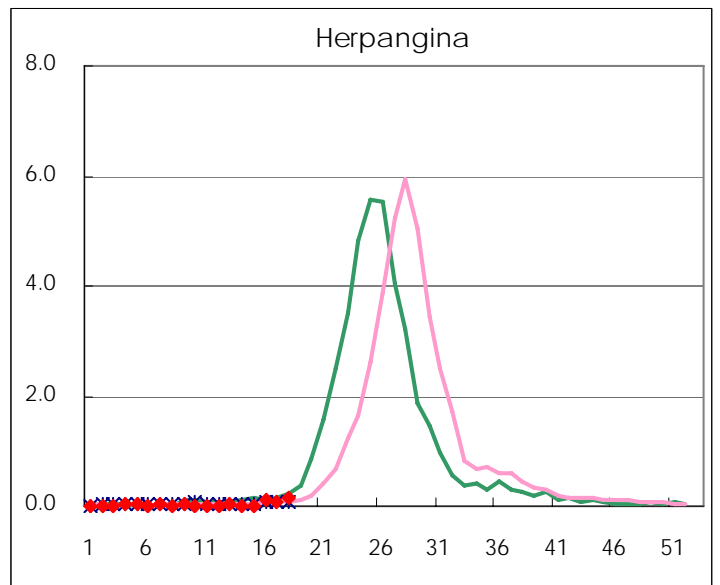
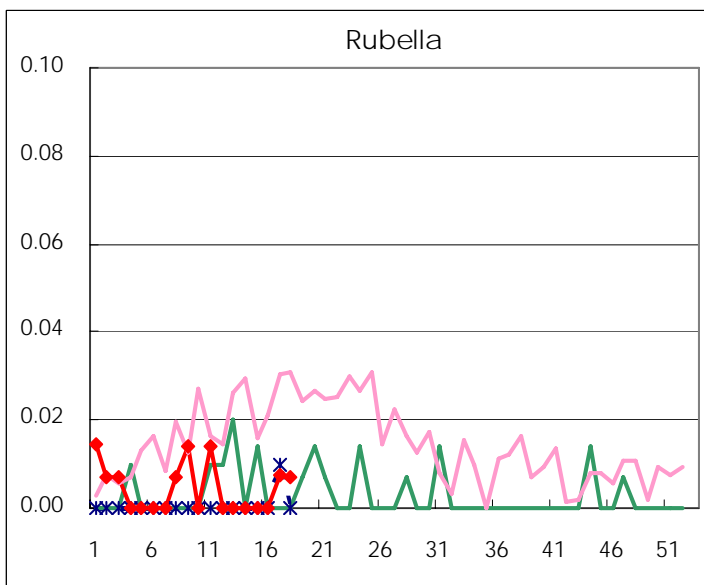
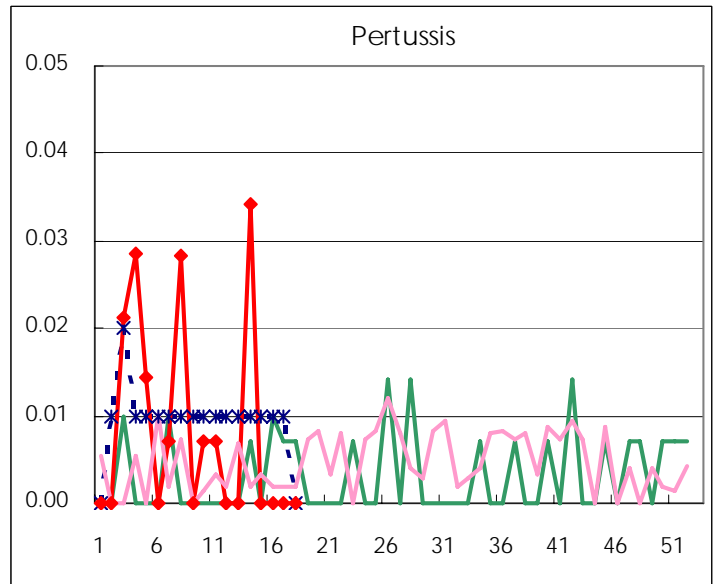
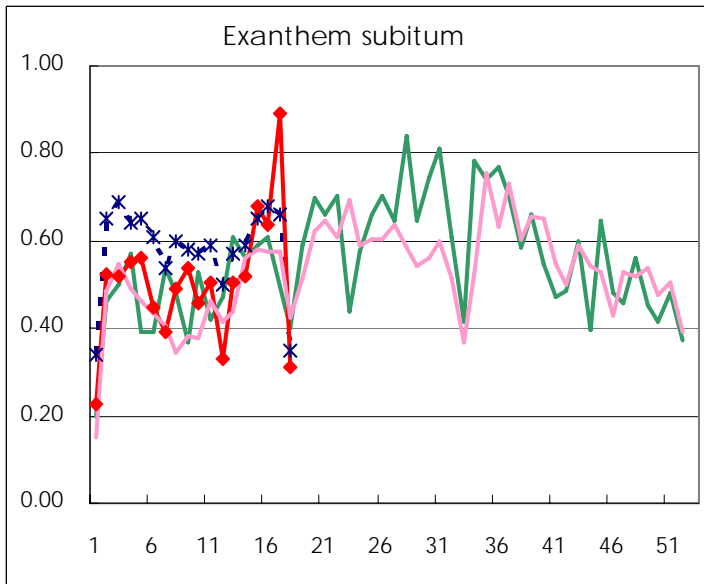
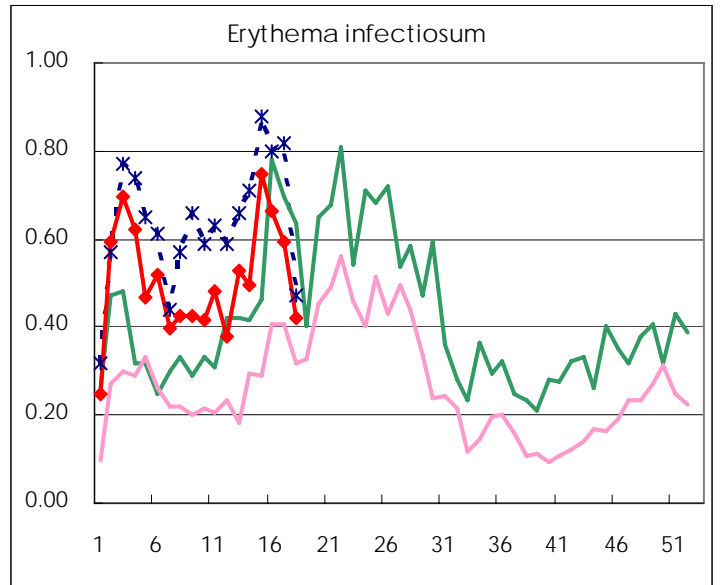
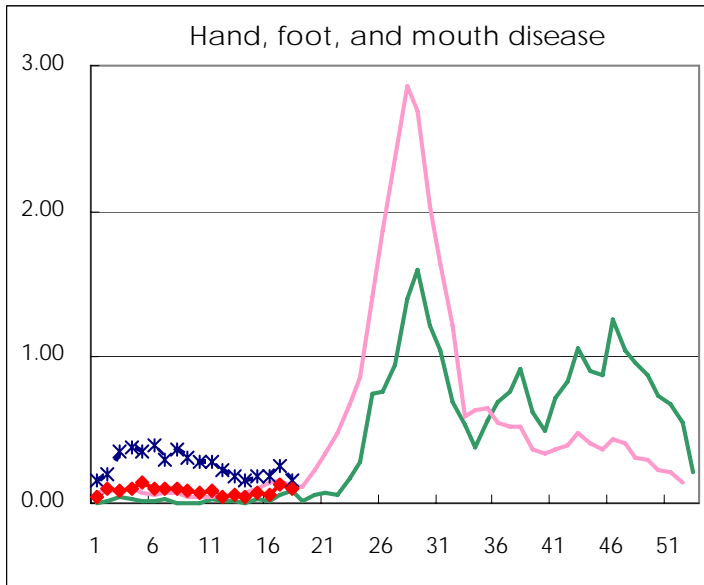
Number of patients with the diseases to be reported
by the designated clinics and hospitals

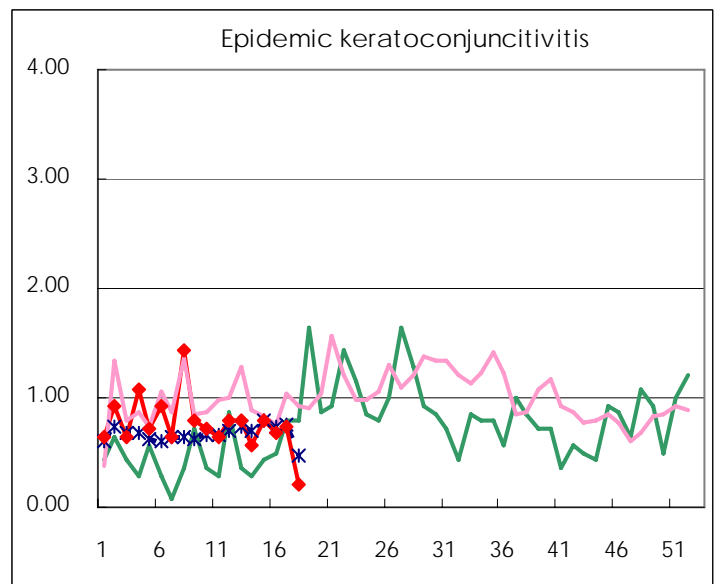
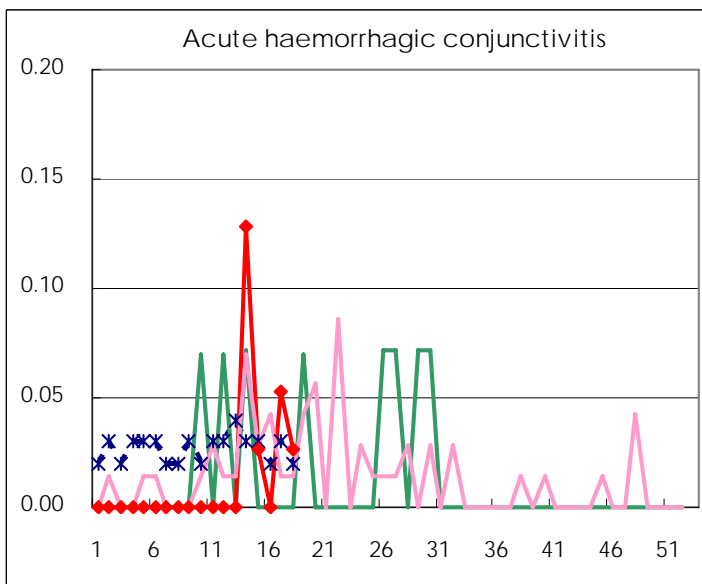
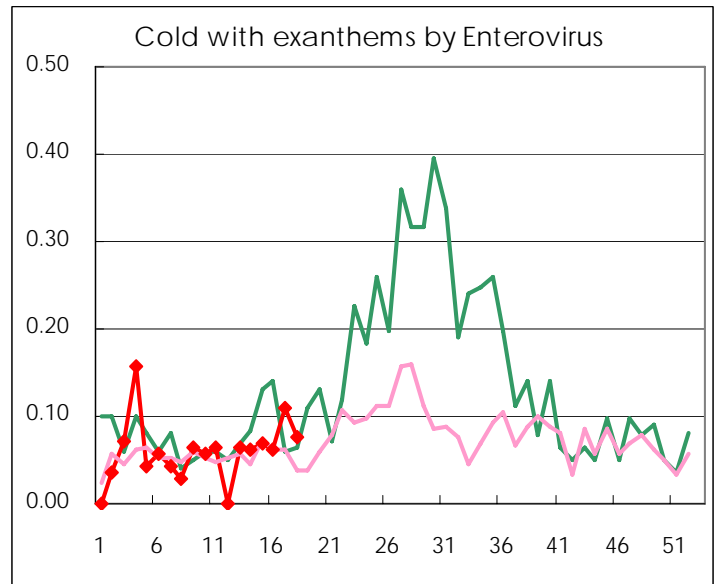
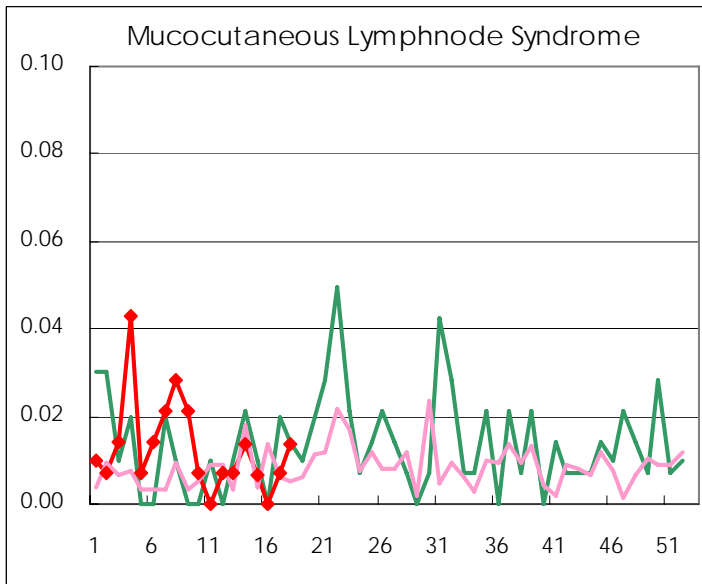
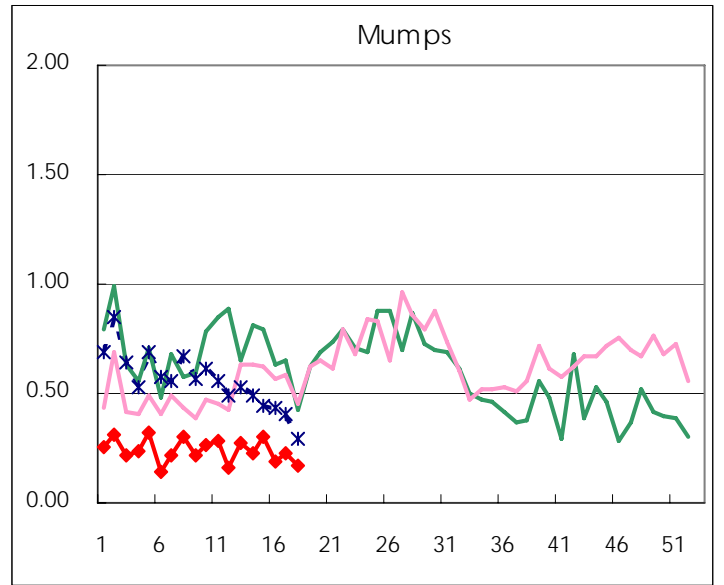
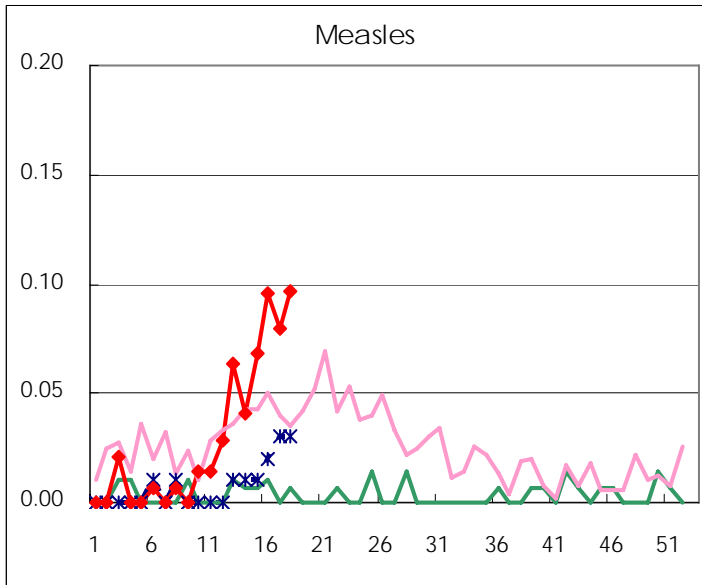
Diseases	2007				4wks total	Cum 2007
	15th	16th	17th	18th		
Respiratory syncytial virus infection	10	9	6	8	33	456
Influenza	1,109	751	451	183	2,494	43576
Pharyngoconjunctival fever	35	67	65	40	207	622
Group A streptococcal pharyngitis	201	263	342	196	1,002	4227
Infectious gastroenteritis	791	825	794	441	2,851	14146
Chickenpox	231	187	228	155	801	3702
Hand, foot, and mouth disease	10	8	17	14	49	208
Erythema infectiosum	110	97	82	61	350	1296
Exanthem subitum	100	93	123	45	361	1296
Pertussis						21
Rubella			1	1	2	11
Herpangina	2	15	12	20	49	82
Measles	10	14	11	14	49	78
Mumps	44	27	31	24	126	614
Cold with exanthems by Enterovirus	10	9	15	11	45	150
Mucocutaneous Lymphnode Syndrome	1		1	2	4	33
Acute hemorrhagic conjunctivitis	1		2	1	4	9
Epidemic keratoconjunctivitis	30	26	28	8	92	263
Bacterial meningitis	1			2	3	7
Aseptic meningitis			1		1	9
Mycoplasma pneumonia	1	4	3	2	10	41
Chlamydial pneumonia (excluding psittacosis)		1			1	2
Measles in adults	7	12	15	18	52	71

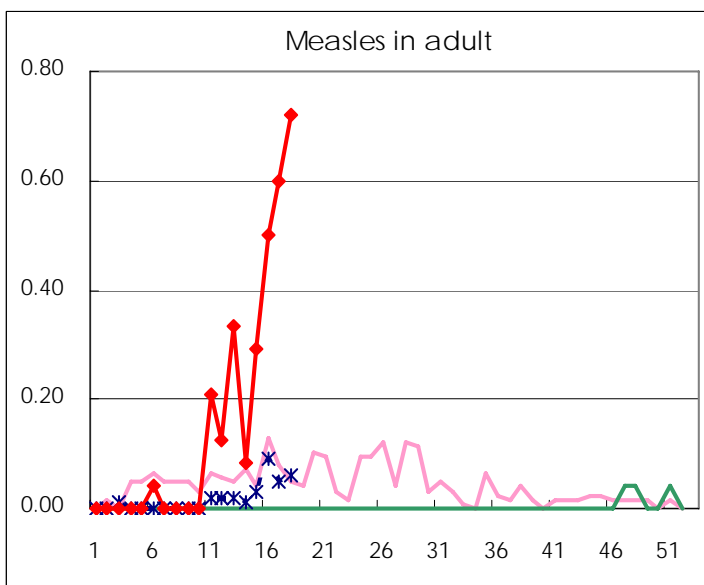
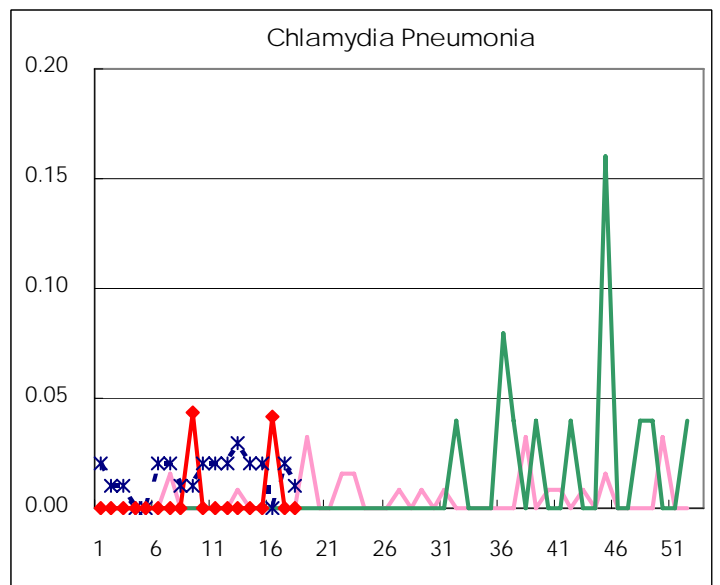
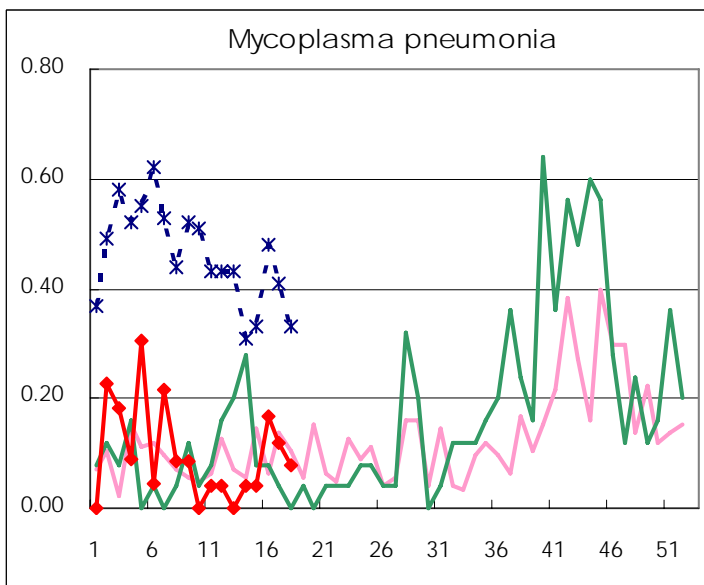
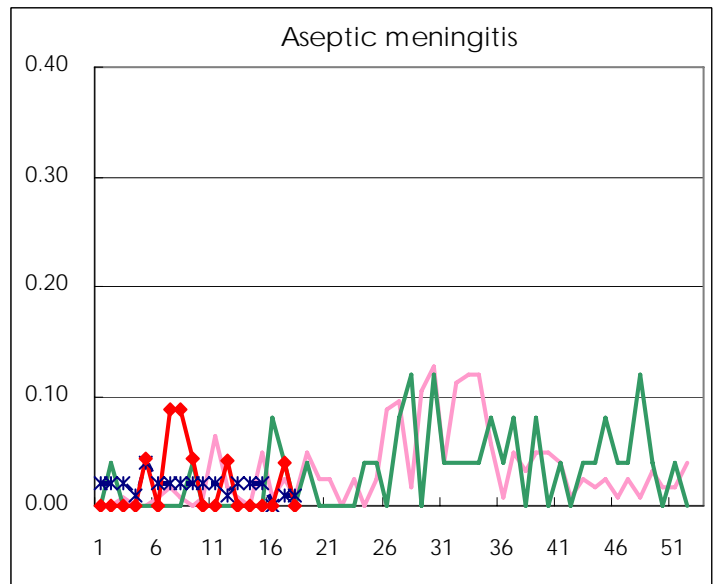
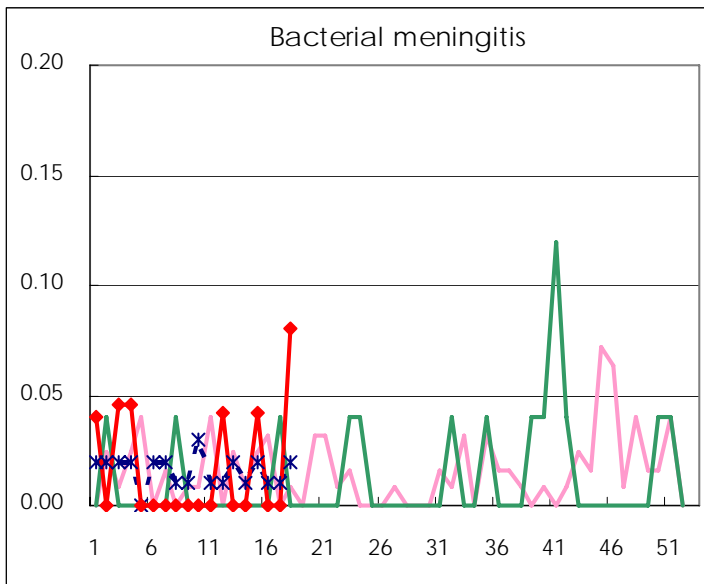
(Blank means 0.)

Disease Trend Graph (weekly reported cases per fixed-point in comparison)









Number of sentinel facilities for weekly reporting		
Types of sentinels	Number of sentinels	Sentinels having reported
Pediatric	146	145
Influenza	282	278
Ophthalmic	39	38
Specially-designated	25	25

Tokyo Metropolitan Government
Infectious Disease Surveillance Center