
INFECTIOUS DISEASES WEEKLY REPORT

TOKYO IDWR

Tokyo Metropolitan Infectious Disease Surveillance Center

17 May 2007 / Number 19

Surveillance System in Tokyo, Japan

The infectious diseases which all physicians must report

All physicians must report to health centers the incidence of the diseases which are shown at page one. Health centers electronically report the individual cases to Tokyo Metropolitan Infectious Disease Surveillance Center.

The infectious diseases required to be reported by the sentinels

The numbers of patients who visit the sentinel clinics or hospitals during a week are reported to health centers in Tokyo. And they electronically report the numbers to Tokyo Metropolitan Infectious Disease Surveillance Center. We have about 400 sentinel clinics and hospitals in Tokyo.

1st Week is early January and 52nd Week is end of December.

Tokyo Metropolitan Institute of Public Health
Epidemiological Information Office

TEL:81-3-3363-3213 FAX:81-3-5332-7365

e-mail: idsc@tokyo-eiken.go.jp

URL: idsc.tokyo-eiken.go.jp/

Number of patients with the diseases which all physicians must report

Category	Diseases	Tokyo				Japan		
		16th	17th	18th	19th	Cum 2007	19th	Cum 2007
I	Ebola hemorrhagic fever							
	Crimean-Congo hemorrhagic fever							
	Smallpox							
	South American hemorrhagic fever							
	Plague							
	Marburg disease							
	Lassa fever							
II	Acute poliomyelitis							
	Tuberculosis	45	49	27	41	267	177	1464
	Diphtheria							
	Severe Acute Respiratory Syndrome(SARS)							
III	Cholera							5
	Shigellosis				4	27	13	180
	Enterohemorrhagic Escherichia coli infection	1	3	2	3	14	46	312
	Typhoid fever		1			2	1	13
	Paratyphoid fever		1			3	1	7
IV	Hepatitis E					1		18
	West Nile fever							
	Hepatitis A	1				10	5	65
	Echinococcosis				1	2		5
	Yellow fever							
	Psittacosis					1	1	8
	Omsk hemorrhagic fever							
	Relapsing fever							
	Kyasanur forest disease							
	Q fever							3
	Rabies							
	Coccidioidomycosis					1		2
	Monkeypox							
	Hemorrhagic fever with renal syndrome							
	Western equine encephalitis							
	Tick-borne encephalitis							
	Anthrax							
	Scrub typhus(Tsutsugamushi disease)					2	1	49
	Dengue fever					1	1	20
	Eastern equine encephalitis							
	Avian influenza virus infection							
	Nipah virus infection							
	Japanese spotted fever							
	Japanese encephalitis							1
	Epidemic typhus							
	Hantavirus pulmonary syndrome							
	Herpes B virus infection							
	Glanders							1
	Brucellosis							
	Venezuelan equine encephalitis							
	Hendra virus infection							
	Botulism							1
	Malaria	1	1			8		14
Tularemia								
Lyme disease								
Lyssavirus infection(excluding rabies)								
Rift valley fever								
Melioidosis								
Legionellosis	1		1	2	9	7	139	
Leptospirosis		1			2		3	
Rocky mountain spotted fever								

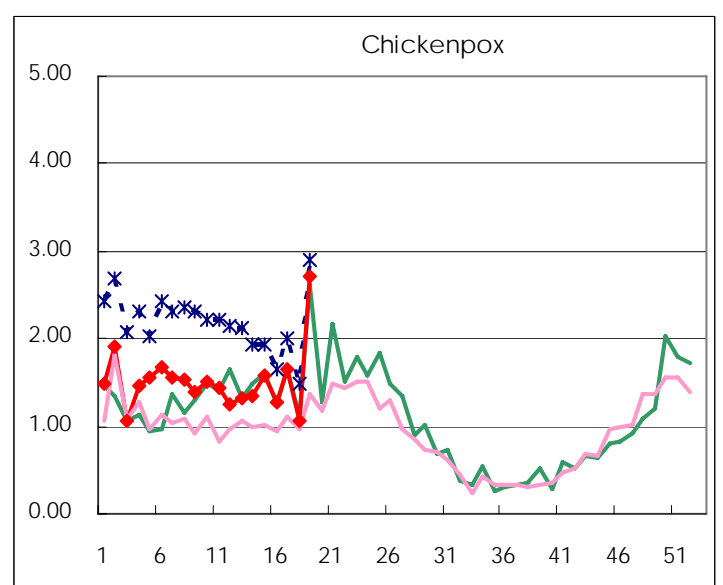
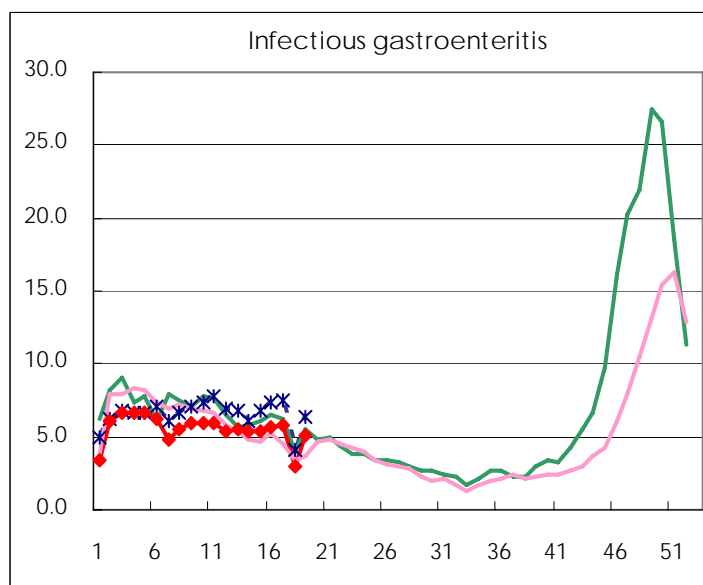
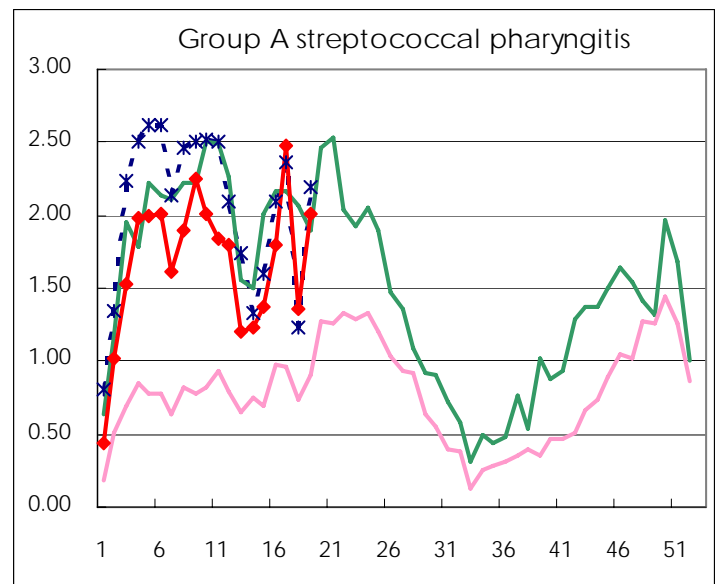
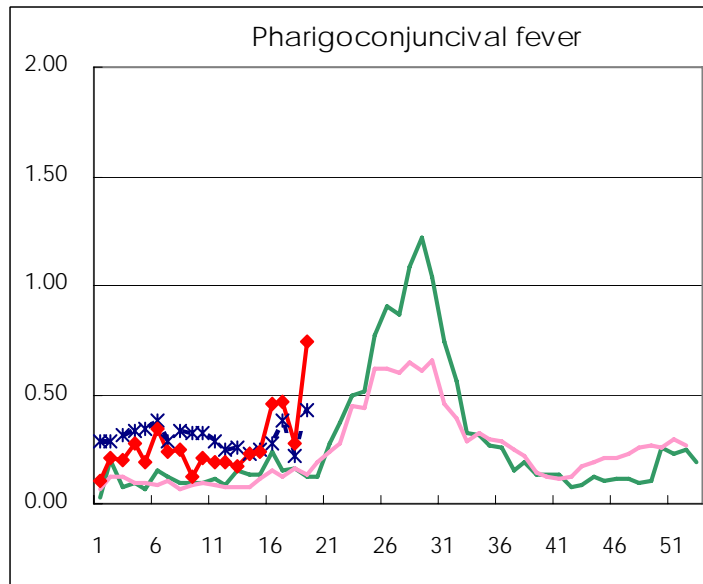
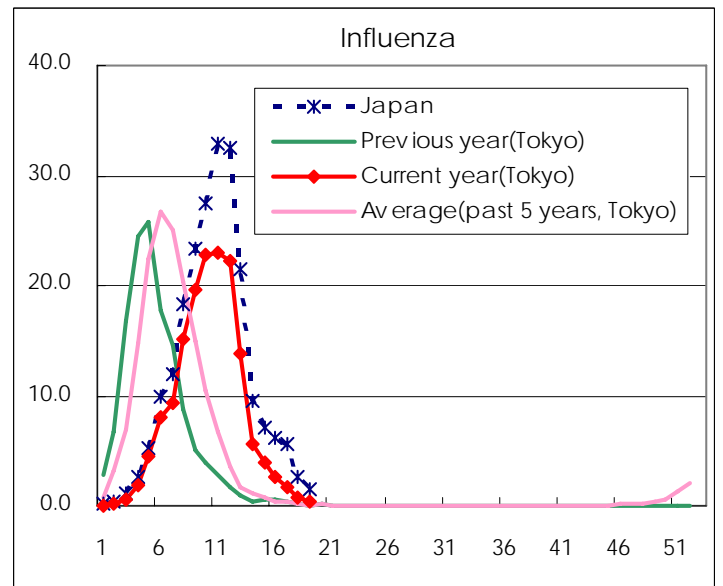
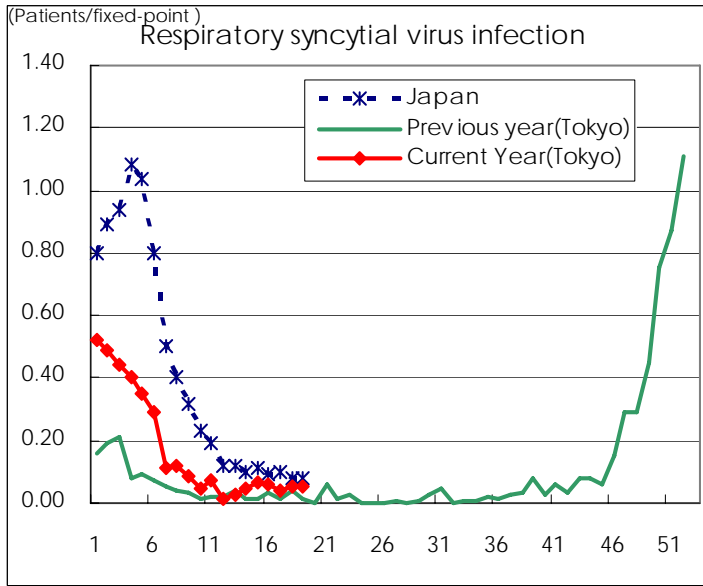
Category	Diseases	Tokyo				Cum 2007	Japan	
		16th	17th	18th	19th		19th	Cum 2007
V	Amebiasis	1	3		4	52	9	258
	Viral hepatitis(excluding hepatitis A and E)	1	1			14	1	58
	Acute encephalitis(excluding JE and WNE)				2	4	3	77
	Cryptosporidiosis							2
	Creutzfeldt-Jakob disease		1		2	6	3	59
	Severe invasive streptococcal infections(TSLS)					2	1	41
	Acquired immunodeficiency syndrome (AIDS)	6	7	5	10	164	14	445
	Giardiasis		1			6	2	18
	Meningococcal meningitis						1	7
	Congenital rubella syndrome							
	Syphilis	4	4	1	5	41	9	177
	Tetanus						2	23
	Vancomycin-resistant S. aureus infection							
	Vancomycin-resistant Enterococcus infection					7	2	29
designated	Influenza (H5N1)							

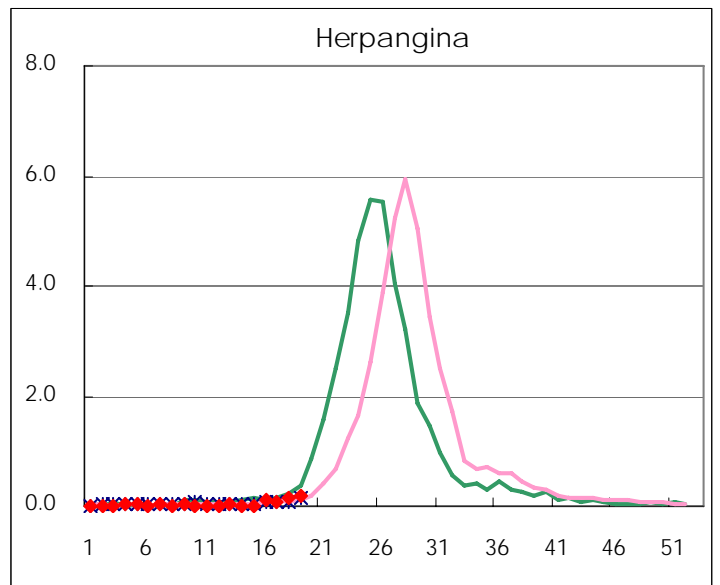
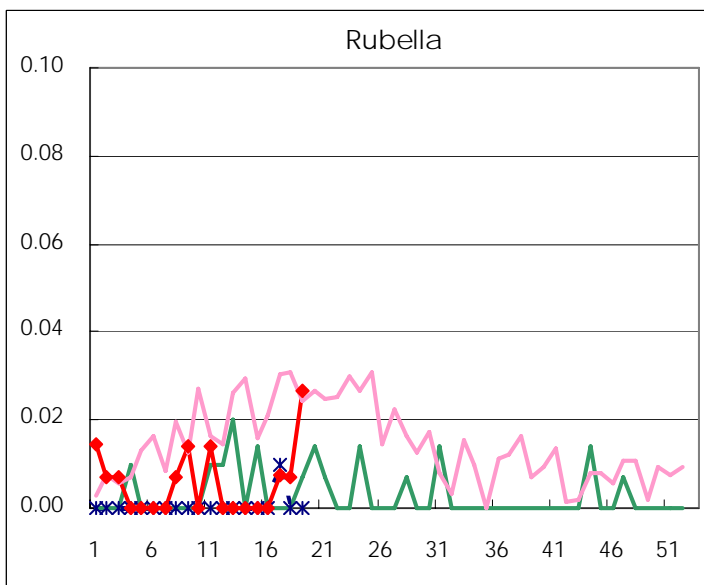
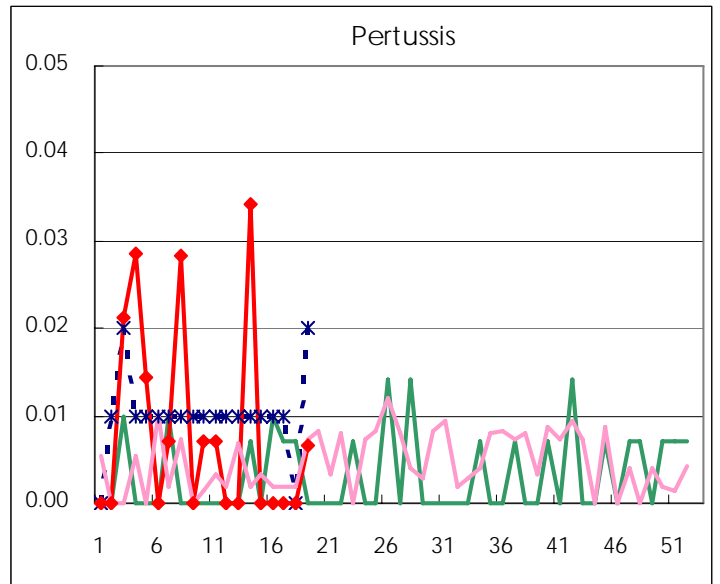
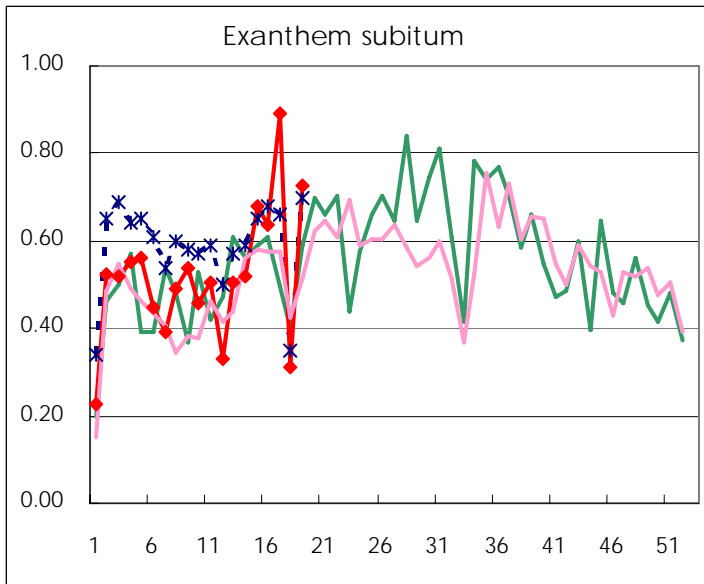
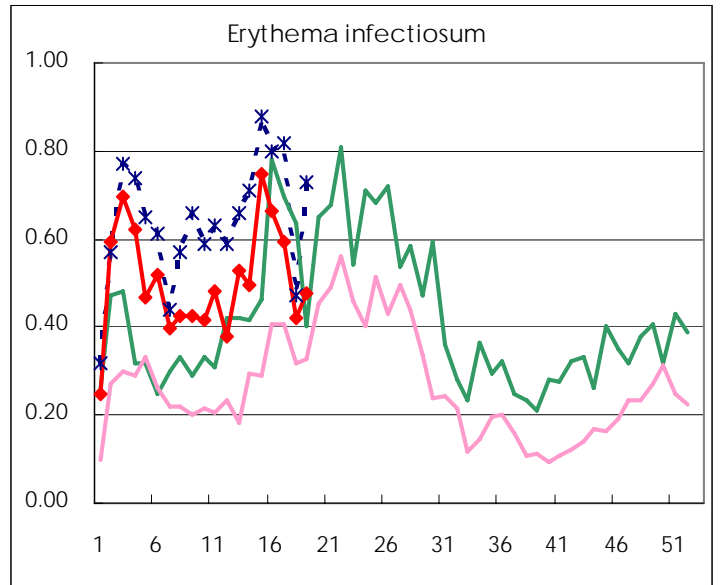
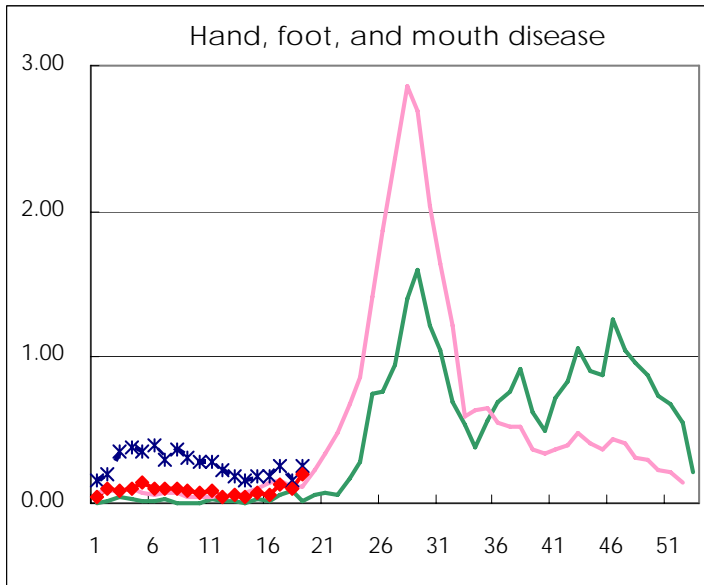
Number of patients with the diseases to be reported
by the designated clinics and hospitals

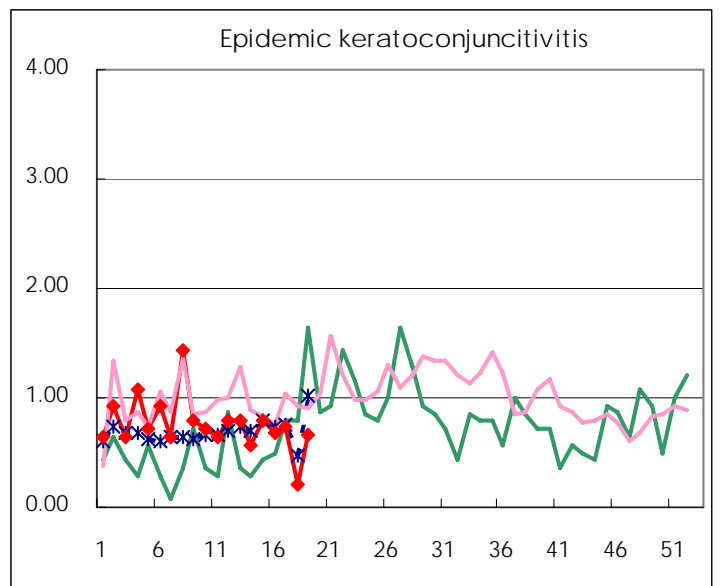
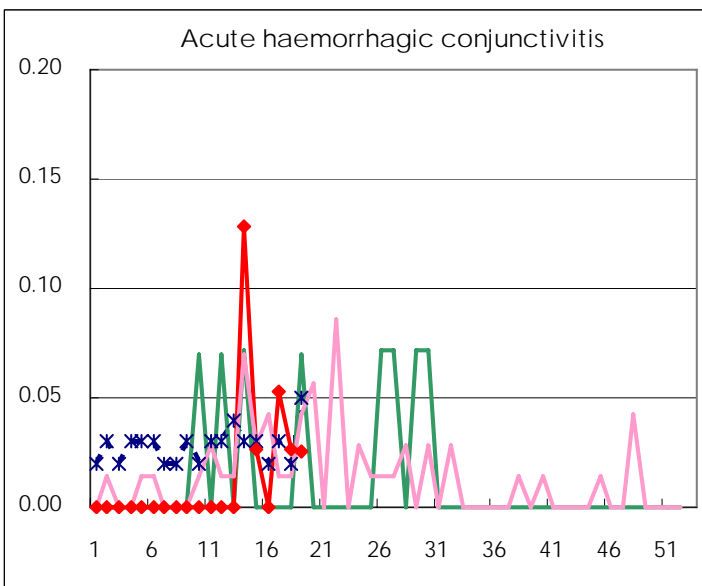
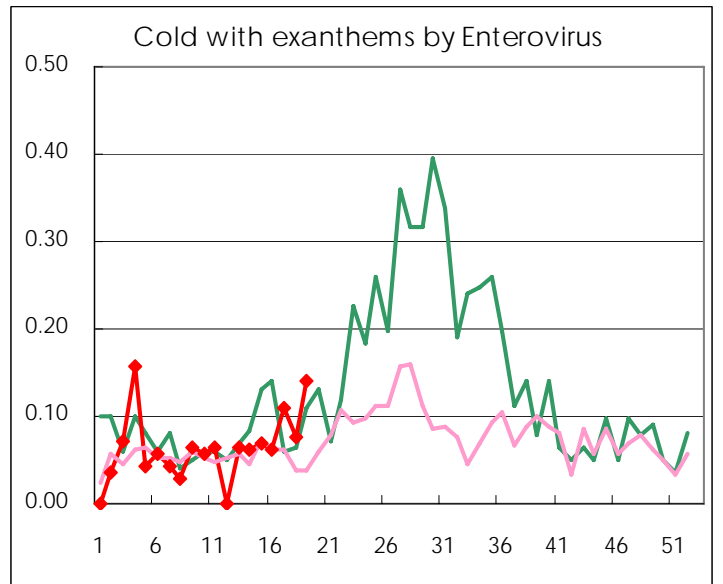
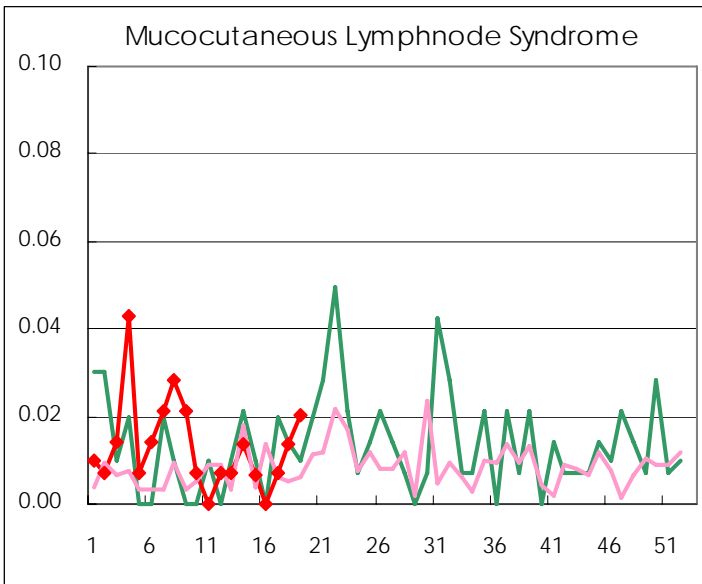
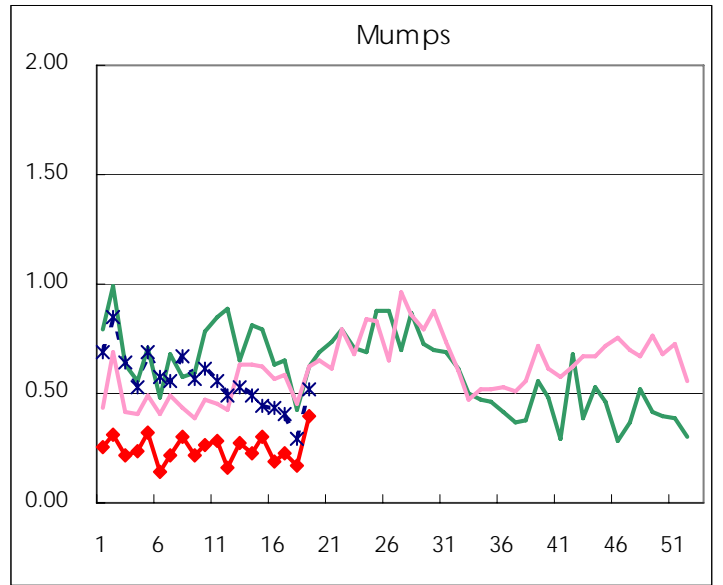
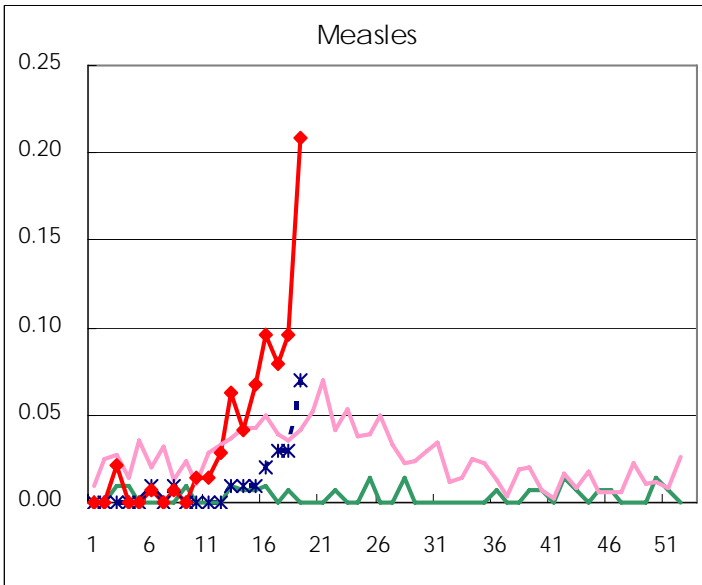
Diseases	2007				4wks total	Cum 2007
	16th	17th	18th	19th		
Respiratory syncytial virus infection	9	6	8	7	30	463
Influenza	751	451	183	92	1,477	43668
Pharyngoconjunctival fever	67	65	40	110	282	732
Group A streptococcal pharyngitis	263	342	196	300	1,101	4527
Infectious gastroenteritis	825	794	441	767	2,827	14917
Chickenpox	187	228	155	403	973	4105
Hand, foot, and mouth disease	8	17	14	30	69	238
Erythema infectiosum	97	82	61	71	311	1367
Exanthem subitum	93	123	45	108	369	1404
Pertussis				1	1	22
Rubella		1	1	4	6	15
Herpangina	15	12	20	28	75	110
Measles	14	11	14	31	70	109
Mumps	27	31	24	59	141	673
Cold with exanthems by Enterovirus	9	15	11	21	56	171
Mucocutaneous Lymphnode Syndrome		1	2	3	6	36
Acute hemorrhagic conjunctivitis		2	1	1	4	10
Epidemic keratoconjunctivitis	26	28	8	26	88	289
Bacterial meningitis			2	1	3	8
Aseptic meningitis		1		1	2	10
Mycoplasma pneumonia	4	3	2	5	14	47
Chlamydial pneumonia (excluding psittacosis)	1				1	2
Measles in adults	12	15	18	19	64	90

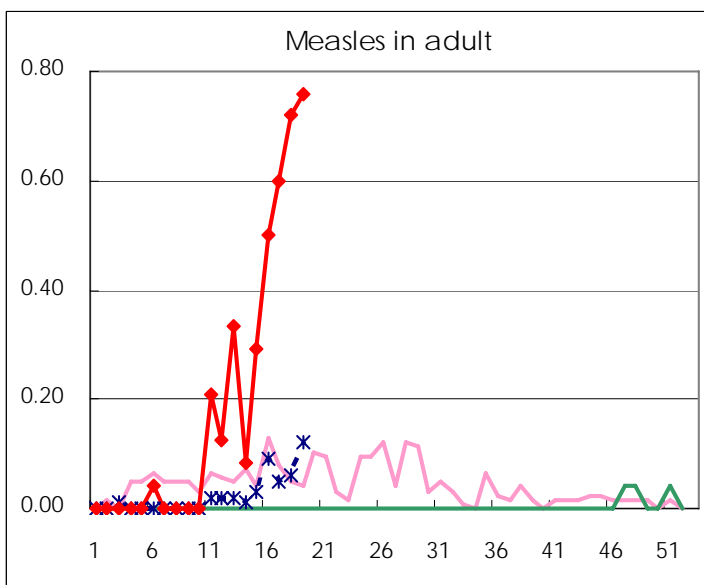
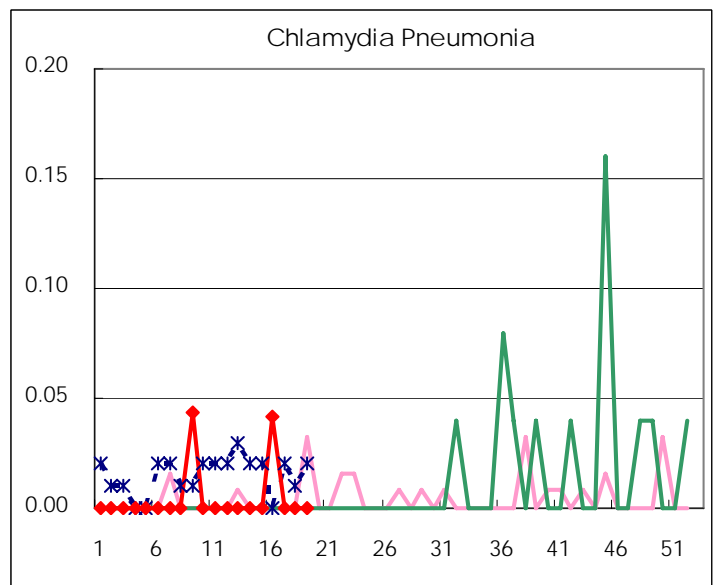
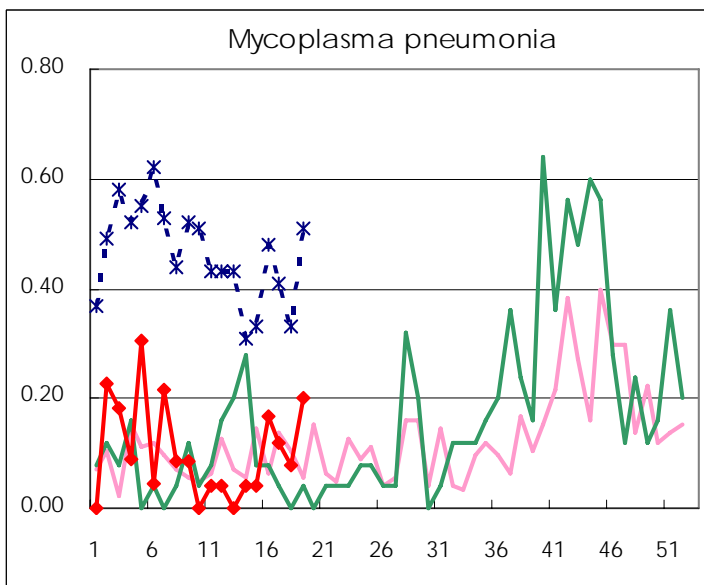
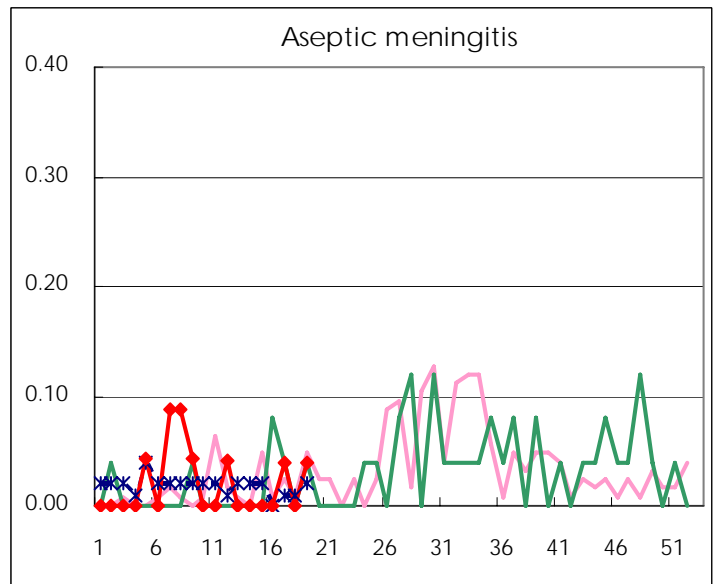
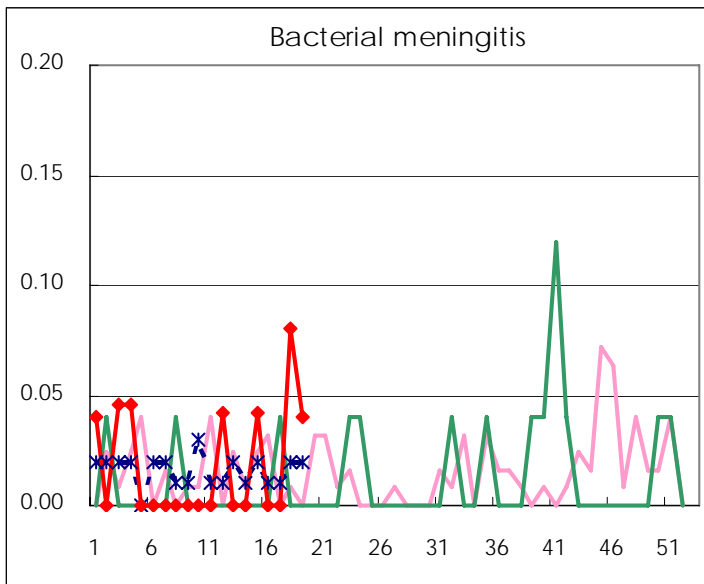
(Blank means 0.)

Disease Trend Graph (weekly reported cases per fixed-point in comparison)









Number of sentinel facilities for weekly reporting		
Types of sentinels	Number of sentinels	Sentinels having reported
Pediatric	150	149
Influenza	290	284
Ophthalmic	39	39
Specially-designated	25	25

Tokyo Metropolitan Government
Infectious Disease Surveillance Center