

---

INFECTIOUS DISEASES WEEKLY REPORT

# TOKYO IDWR

Tokyo Metropolitan Infectious Disease Surveillance Center

## 25 May 2007 / Number 20

### Surveillance System in Tokyo, Japan

#### The infectious diseases which all physicians must report

All physicians must report to health centers the incidence of the diseases which are shown at page one. Health centers electronically report the individual cases to Tokyo Metropolitan Infectious Disease Surveillance Center.

#### The infectious diseases required to be reported by the sentinels

The numbers of patients who visit the sentinel clinics or hospitals during a week are reported to health centers in Tokyo. And they electronically report the numbers to Tokyo Metropolitan Infectious Disease Surveillance Center. We have about 400 sentinel clinics and hospitals in Tokyo.

1st Week is early January and 52nd Week is end of December.

Tokyo Metropolitan Institute of Public Health  
Epidemiological Information Office

TEL:81-3-3363-3213 FAX:81-3-5332-7365

e-mail:[idsc@tokyo-eiken.go.jp](mailto:idsc@tokyo-eiken.go.jp)

URL:[idsc.tokyo-eiken.go.jp/](http://idsc.tokyo-eiken.go.jp/)

---

## Number of patients with the diseases which all physicians must report

Category	Diseases	Tokyo				Japan		
		17th	18th	19th	20th	Cum 2007	20th	Cum 2007
I	Ebola hemorrhagic fever							
	Crimean-Congo hemorrhagic fever							
	Smallpox							
	South American hemorrhagic fever							
	Plague							
	Marburg disease							
	Lassa fever							
II	Acute poliomyelitis							
	Tuberculosis	54	30	54	50	348	229	1860
	Diphtheria							
	Severe Acute Respiratory Syndrome(SARS)							
III	Cholera				1	1		5
	Shigellosis			4	1	28	2	182
	Enterohemorrhagic Escherichia coli infection	3	2	3	3	17	39	353
	Typhoid fever	1				2	1	14
	Paratyphoid fever	1				3		7
IV	Hepatitis E					1	1	19
	West Nile fever							
	Hepatitis A				2	12	1	68
	Echinococcosis			1		2		5
	Yellow fever							
	Psittacosis					1	1	9
	Omsk hemorrhagic fever							
	Relapsing fever							
	Kyasanur forest disease							
	Q fever							3
	Rabies							
	Coccidioidomycosis					1		2
	Monkeypox							
	Hemorrhagic fever with renal syndrome							
	Western equine encephalitis							
	Tick-borne encephalitis							
	Anthrax							
	Scrub typhus(Tsutsugamushi disease)					2	4	57
	Dengue fever					1		21
	Eastern equine encephalitis							
	Avian influenza virus infection							
	Nipah virus infection							
	Japanese spotted fever						1	1
	Japanese encephalitis							1
	Epidemic typhus							
	Hantavirus pulmonary syndrome							
	Herpes B virus infection							
	Glanders							
	Brucellosis							1
	Venezuelan equine encephalitis							
	Hendra virus infection							
	Botulism							2
	Malaria	1				8	1	16
Tularemia								
Lyme disease								
Lyssavirus infection(excluding rabies)								
Rift valley fever								
Melioidosis								
Legionellosis		1	2		9	4	144	
Leptospirosis	1				2		3	
Rocky mountain spotted fever								

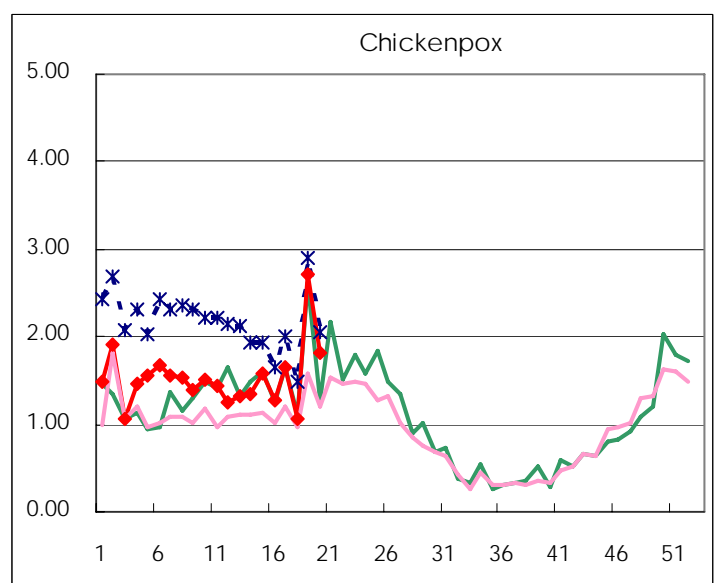
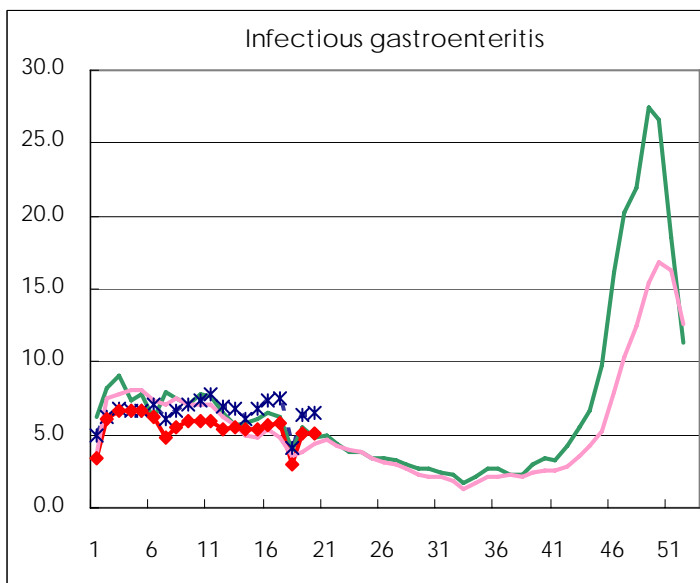
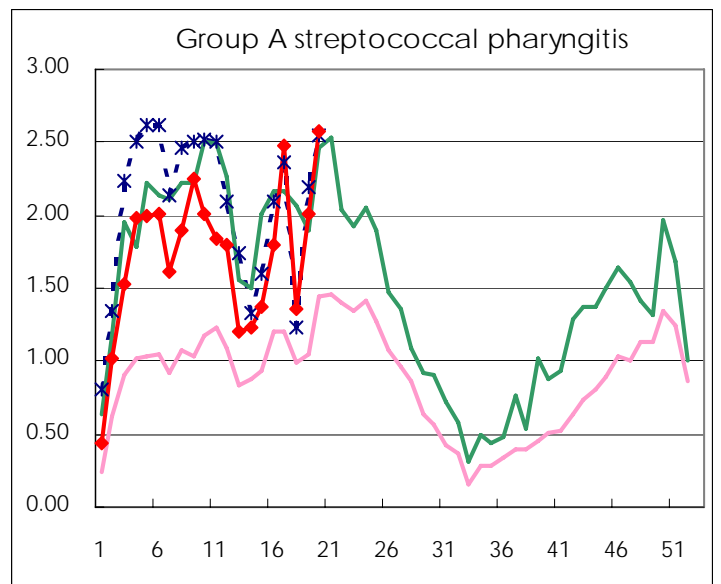
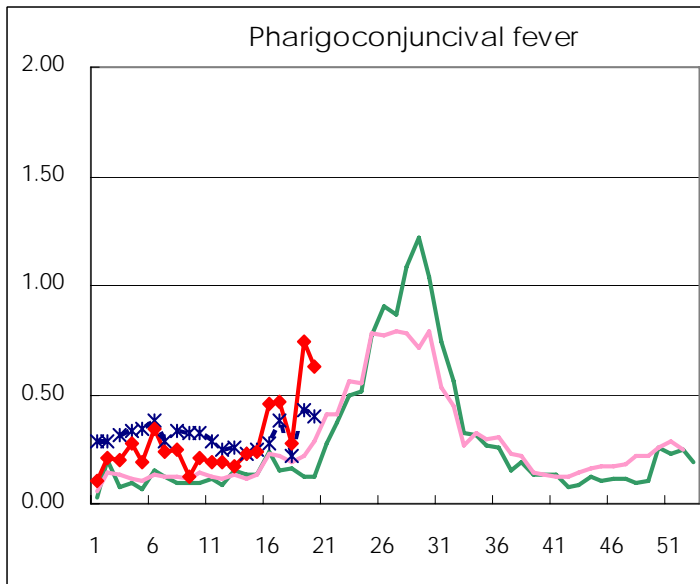
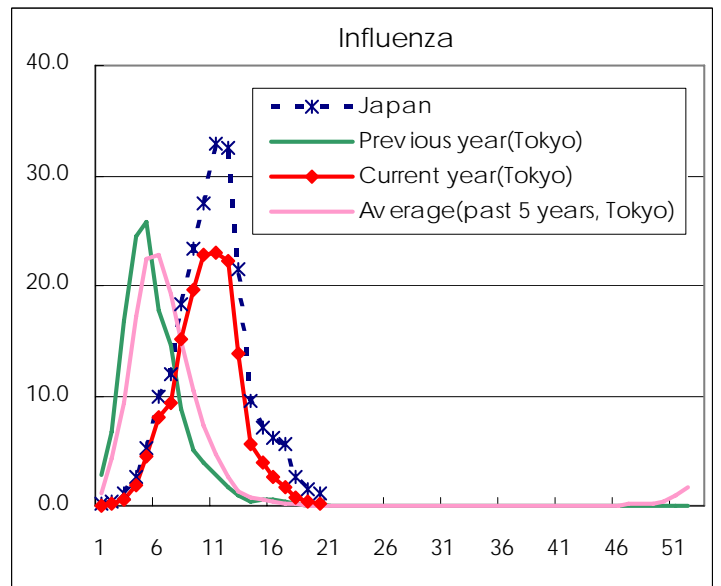
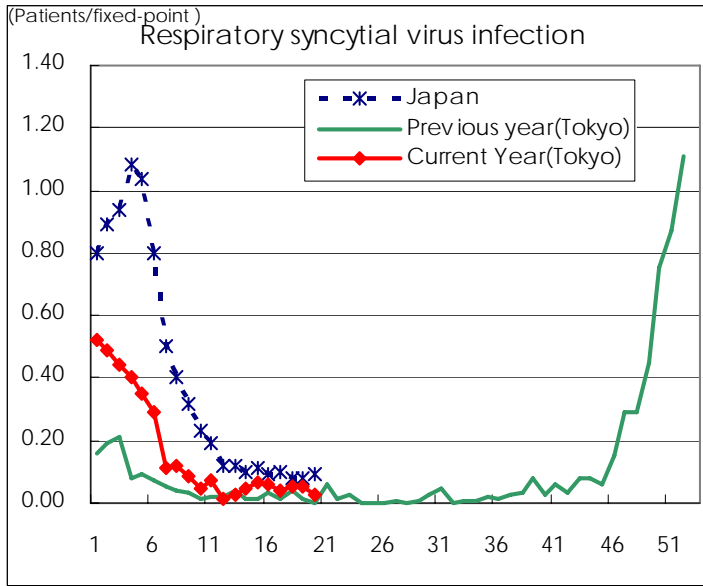
Category	Diseases	Tokyo				Cum 2007	Japan	
		17th	18th	19th	20th		20th	Cum 2007
V	Amebiasis	3		4	1	53	8	273
	Viral hepatitis(excluding hepatitis A and E)	1				14	1	61
	Acute encephalitis(excluding JE and WNE)			2	1	5	1	81
	Cryptosporidiosis							2
	Creutzfeldt-Jakob disease	1		2		6	1	60
	Severe invasive streptococcal infections(TSLS)				1	3	2	43
	Acquired immunodeficiency syndrome (AIDS)	7	5	10	8	172	11	471
	Giardiasis	1			1	7		18
	Meningococcal meningitis						1	9
	Congenital rubella syndrome							
	Syphilis	4	1	5	3	44	4	188
	Tetanus						1	27
	Vancomycin-resistant S. aureus infection							
	Vancomycin-resistant Enterococcus infection					7		29
designated	Influenza (H5N1)							

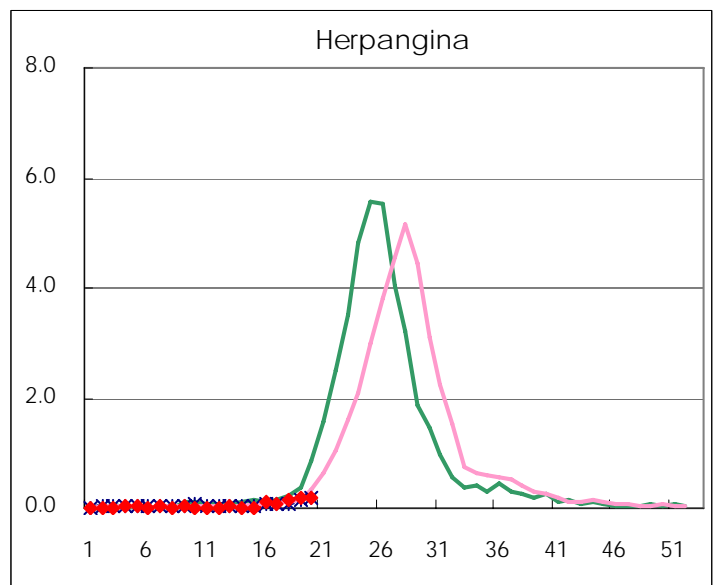
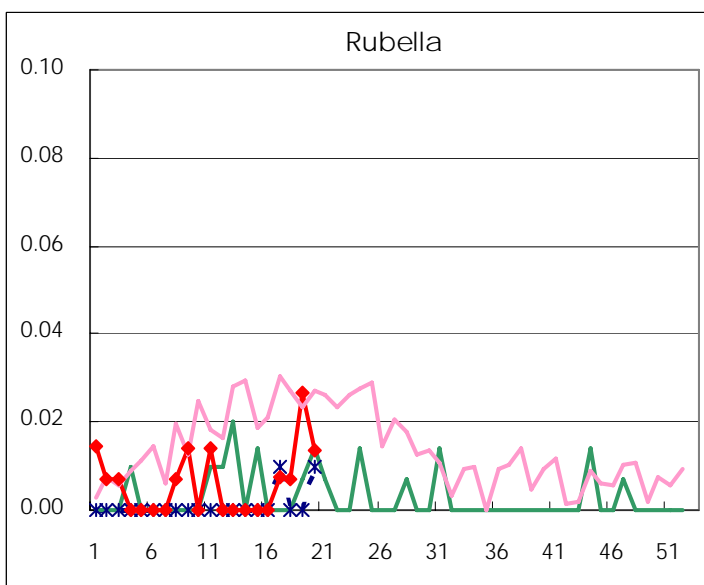
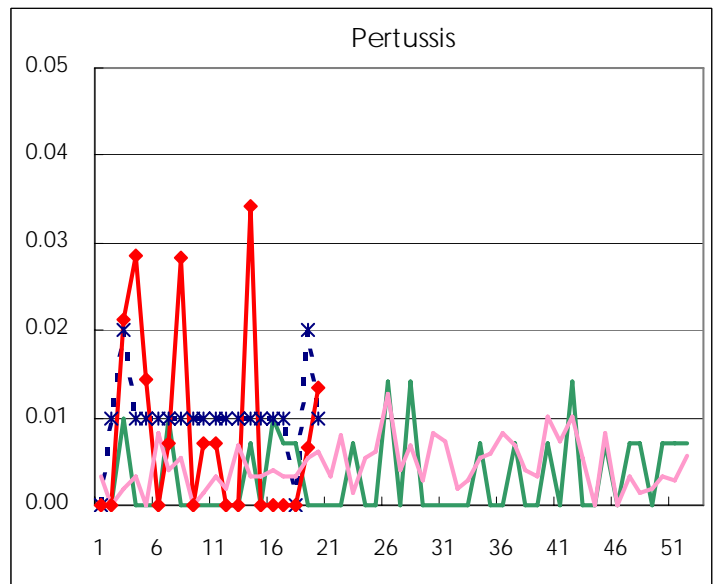
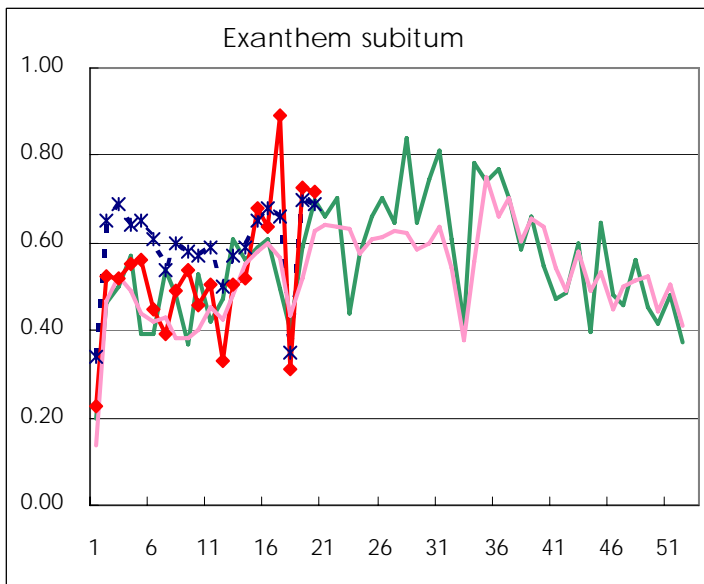
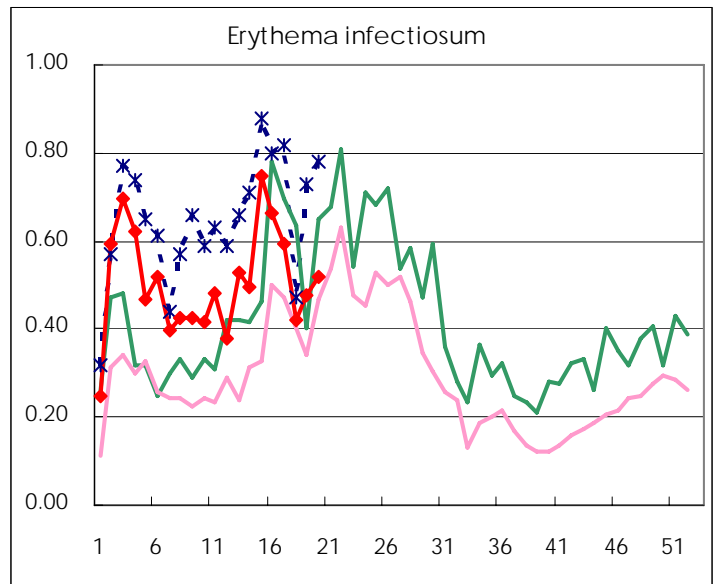
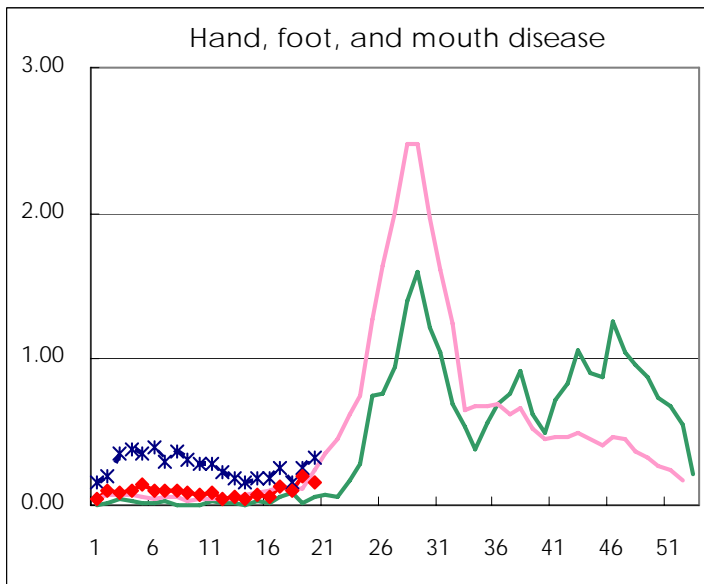
Number of patients with the diseases to be reported  
by the designated clinics and hospitals

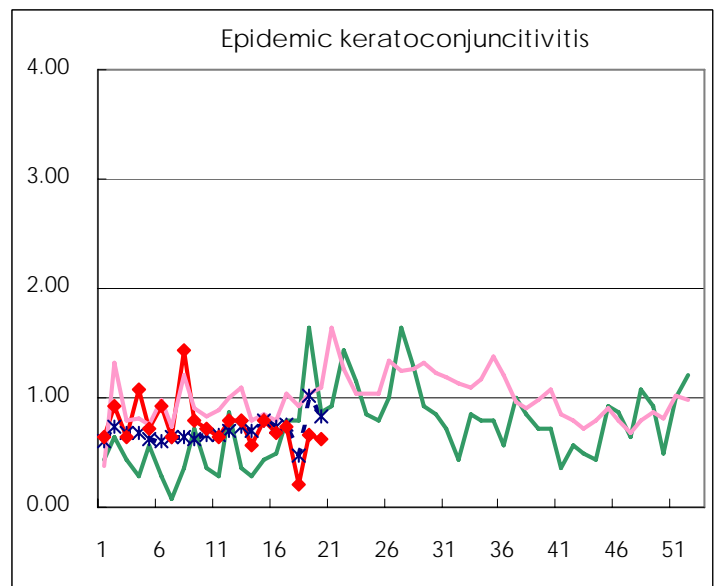
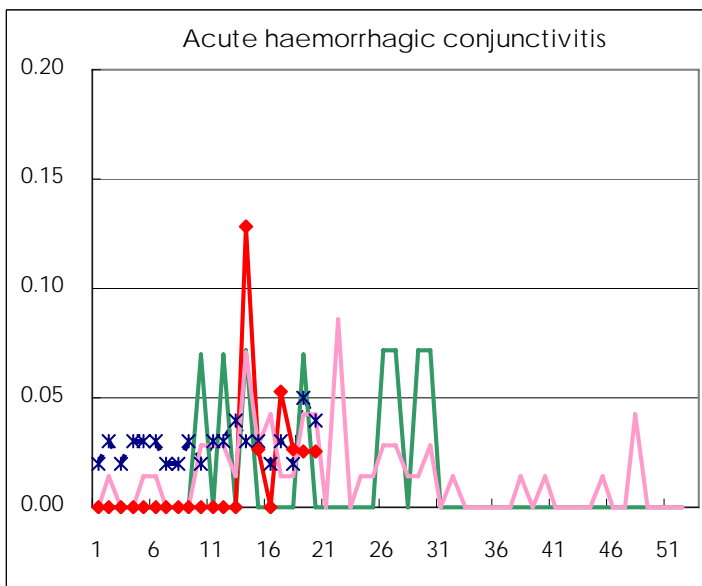
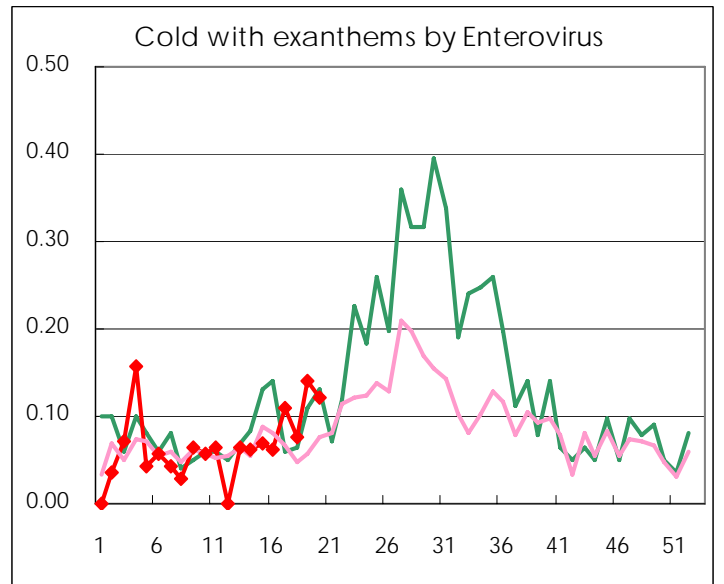
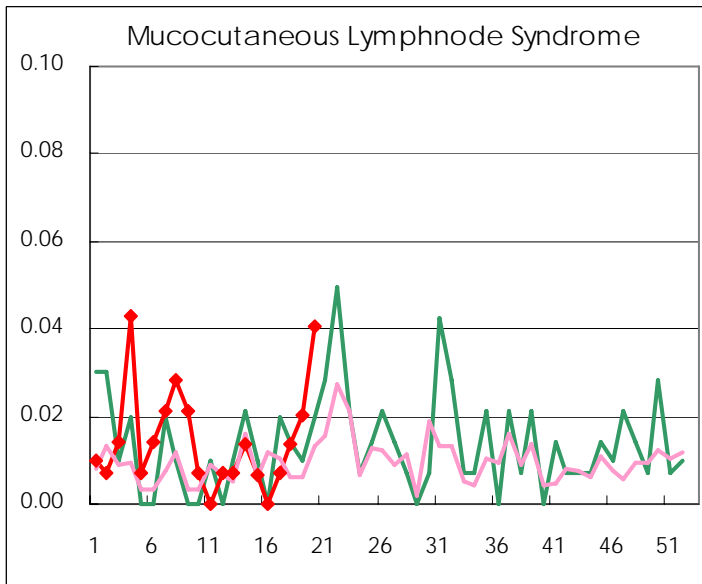
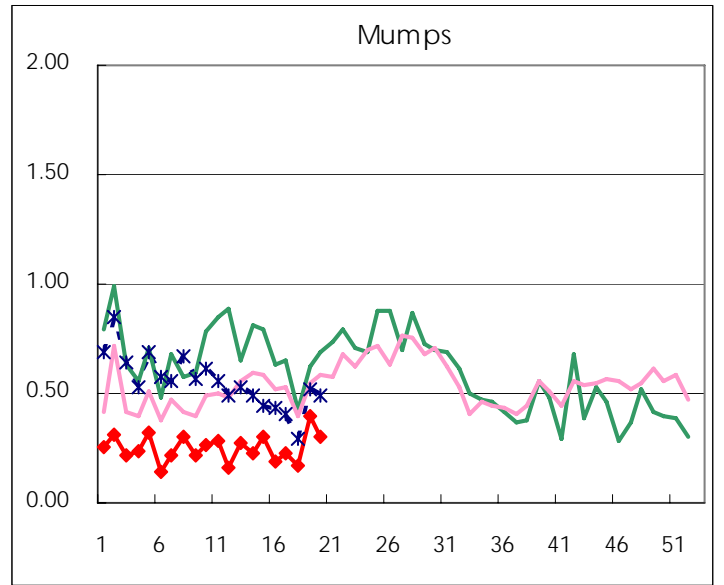
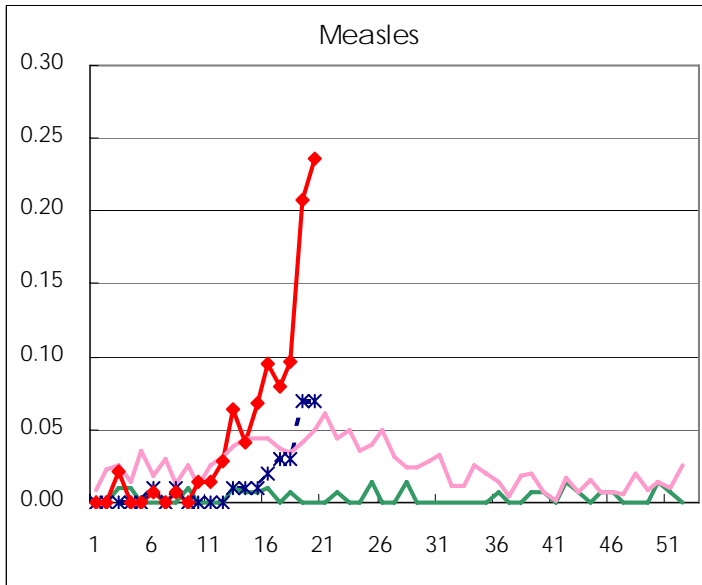
Diseases	2007				4wks total	Cum 2007
	17th	18th	19th	20th		
Respiratory syncytial virus infection	6	8	7	4	25	467
Influenza	451	183	92	34	760	43702
Pharyngoconjunctival fever	65	40	110	93	308	825
Group A streptococcal pharyngitis	342	196	300	382	1,220	4909
Infectious gastroenteritis	794	441	767	747	2,749	15664
Chickenpox	228	155	403	270	1,056	4375
Hand, foot, and mouth disease	17	14	30	23	84	261
Erythema infectiosum	82	61	71	77	291	1444
Exanthem subitum	123	45	108	106	382	1510
Pertussis			1	2	3	24
Rubella	1	1	4	2	8	17
Herpangina	12	20	28	29	89	139
Measles	11	14	31	35	91	145
Mumps	31	24	59	45	159	718
Cold with exanthems by Enterovirus	15	11	21	18	65	189
Mucocutaneous Lymphnode Syndrome	1	2	3	6	12	42
Acute hemorrhagic conjunctivitis	2	1	1	1	5	11
Epidemic keratoconjunctivitis	28	8	26	24	86	313
Bacterial meningitis		2	1		3	8
Aseptic meningitis	1		1		2	10
Mycoplasma pneumonia	3	2	5	6	16	53
Chlamydial pneumonia (excluding psittacosis)						2
Measles in adults	15	18	19	21	73	116

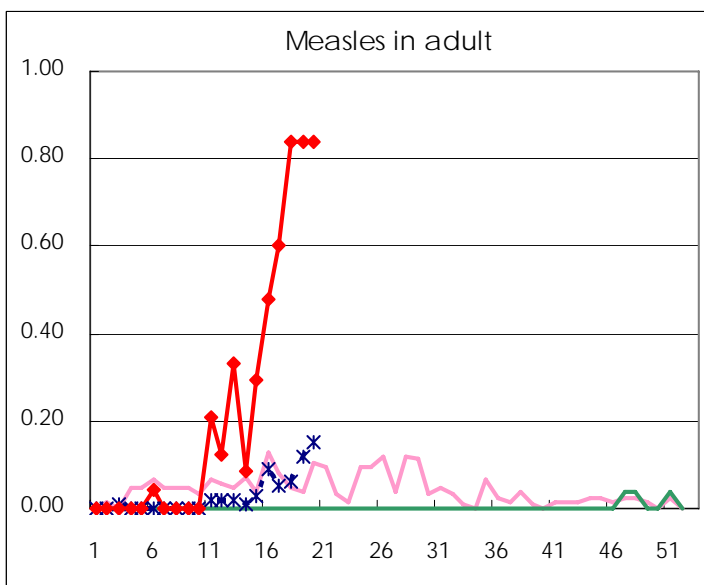
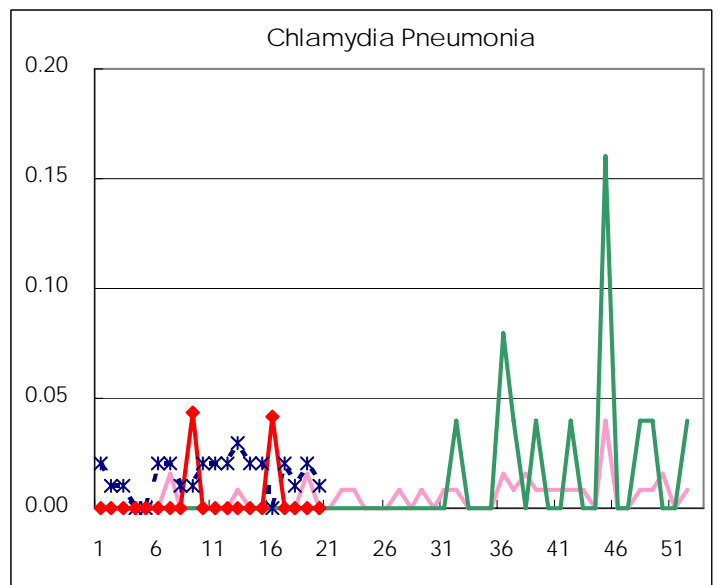
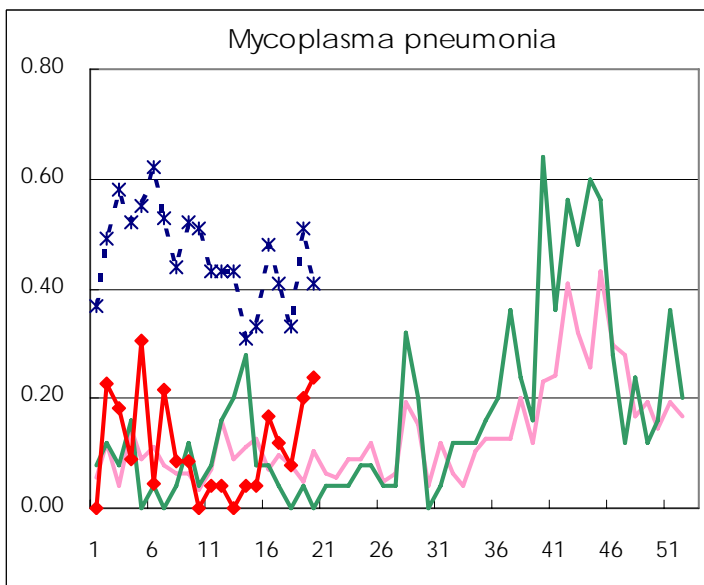
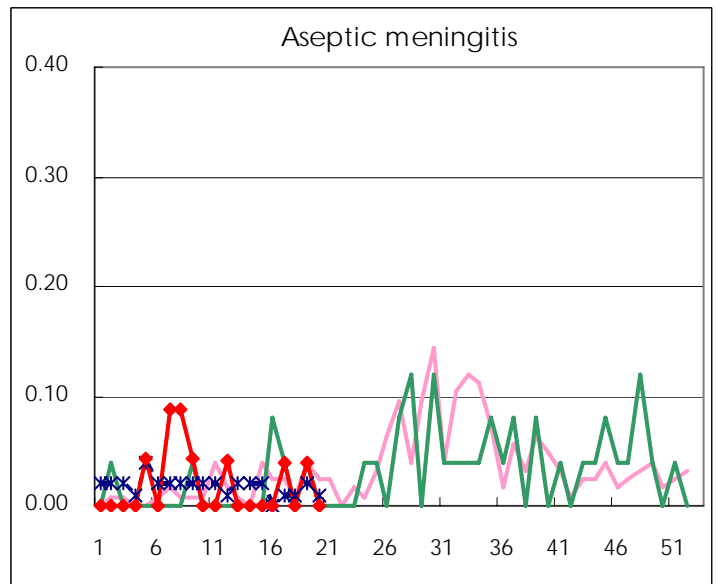
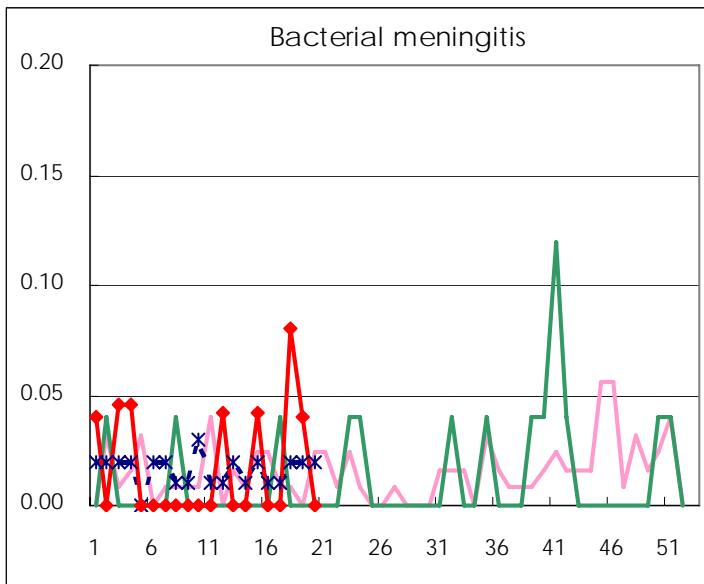
( Blank means 0. )

# Disease Trend Graph (weekly reported cases per fixed-point in comparison)









Number of sentinel facilities for weekly reporting		
Types of sentinels	Number of sentinels	Sentinels having reported
Pediatric	150	148
Influenza	290	283
Ophthalmic	39	39
Specially-designated	25	25

Tokyo Metropolitan Government  
Infectious Disease Surveillance Center