

---

INFECTIOUS DISEASES WEEKLY REPORT

# TOKYO IDWR

Tokyo Metropolitan Infectious Disease Surveillance Center

## 7 June 2007 / Number 22

### Surveillance System in Tokyo, Japan

The infectious diseases which all physicians must report

All physicians must report to health centers the incidence of the diseases which are shown at page one. Health centers electronically report the individual cases to Tokyo Metropolitan Infectious Disease Surveillance Center.

The infectious diseases required to be reported by the sentinels

The numbers of patients who visit the sentinel clinics or hospitals during a week are reported to health centers in Tokyo. And they electronically report the numbers to Tokyo Metropolitan Infectious Disease Surveillance Center. We have about 400 sentinel clinics and hospitals in Tokyo.

1st Week is early January and 52nd Week is end of December.

Tokyo Metropolitan Institute of Public Health  
Epidemiological Information Office

TEL:81-3-3363-3213 FAX:81-3-5332-7365

e-mail:[idsc@tokyo-eiken.go.jp](mailto:idsc@tokyo-eiken.go.jp)

URL:[idsc.tokyo-eiken.go.jp/](http://idsc.tokyo-eiken.go.jp/)

---

## Number of patients with the diseases which all physicians must report

Category	Diseases	Tokyo				Japan		
		19th	20th	21st	22nd	Cum 2007	22nd	Cum 2007
I	Ebola hemorrhagic fever							
	Crimean-Congo hemorrhagic fever							
	Smallpox							
	South American hemorrhagic fever							
	Plague							
	Marburg disease							
	Lassa fever							
II	Acute poliomyelitis							
	Tuberculosis	55	63	47	39	458	254	2776
	Diphtheria							
	Severe Acute Respiratory Syndrome(SARS)							
III	Cholera		1		1	2	1	8
	Shigellosis	4	1	2		30	7	198
	Enterohemorrhagic Escherichia coli infection	4	2	2	46	65	105	513
	Typhoid fever			1	1	4	1	16
	Paratyphoid fever					3		7
IV	Hepatitis E					1		25
	West Nile fever							
	Hepatitis A		2		2	14		77
	Echinococcosis	1				2		6
	Yellow fever							
	Psittacosis					1	2	11
	Omsk hemorrhagic fever							
	Relapsing fever							
	Kyasanur forest disease							
	Q fever							3
	Rabies							
	Coccidioidomycosis					1		2
	Monkeypox							
	Hemorrhagic fever with renal syndrome							
	Western equine encephalitis							
	Tick-borne encephalitis							
	Anthrax							
	Scrub typhus(Tsutsugamushi disease)					2	4	70
	Dengue fever				1	2		22
	Eastern equine encephalitis							
	Avian influenza virus infection							
	Nipah virus infection							
	Japanese spotted fever						3	7
	Japanese encephalitis							1
	Epidemic typhus							
	Hantavirus pulmonary syndrome							
	Herpes B virus infection							
	Glanders							
	Brucellosis							1
	Venezuelan equine encephalitis							
	Hendra virus infection							
	Botulism							2
Malaria			1	1	10	1	18	
Tularemia								
Lyme disease								
Lyssavirus infection(excluding rabies)								
Rift valley fever								
Melioidosis								
Legionellosis	2			2	11	11	165	
Leptospirosis					2		3	
Rocky mountain spotted fever								

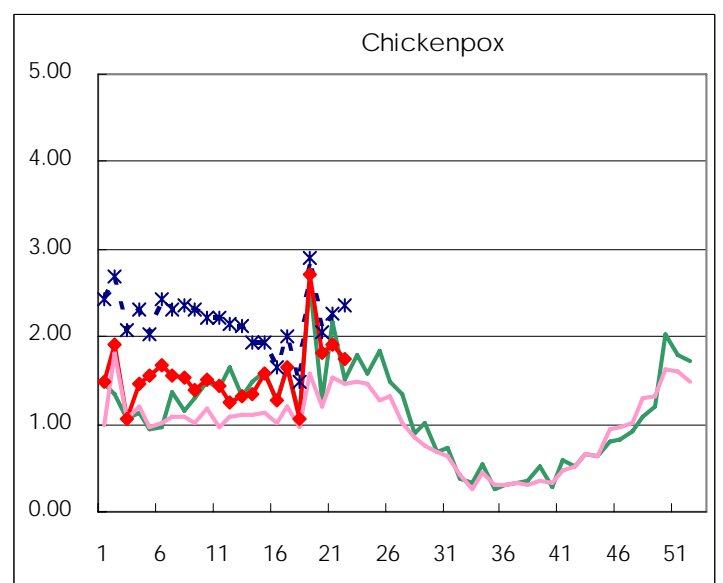
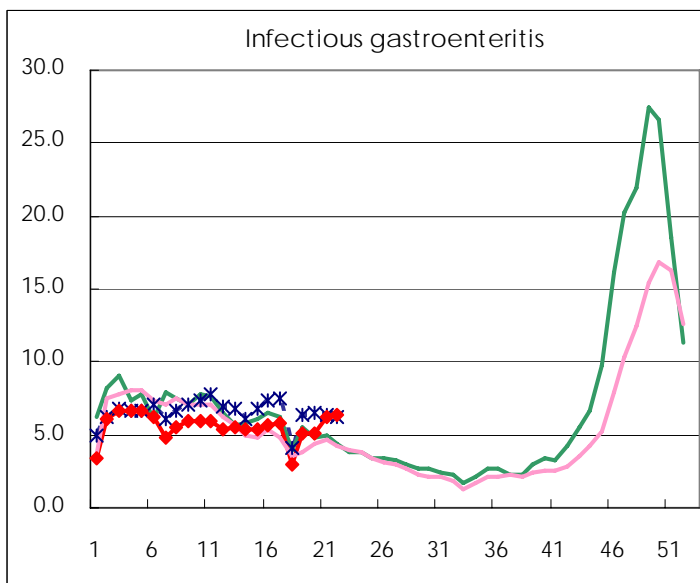
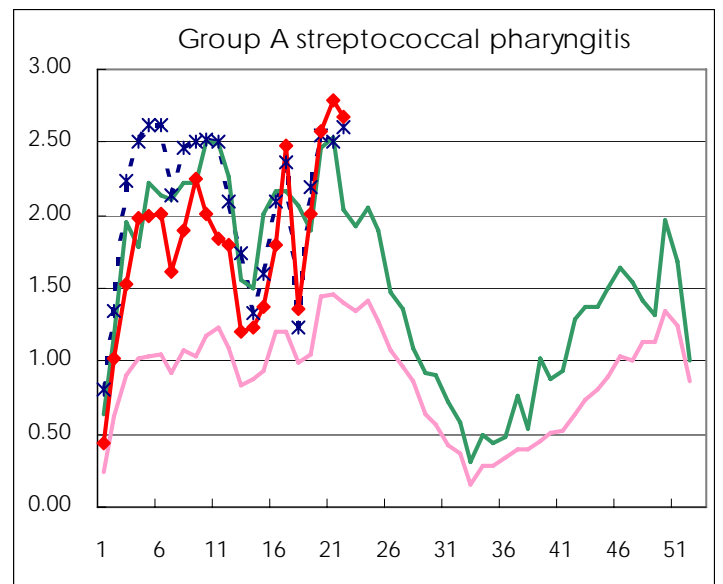
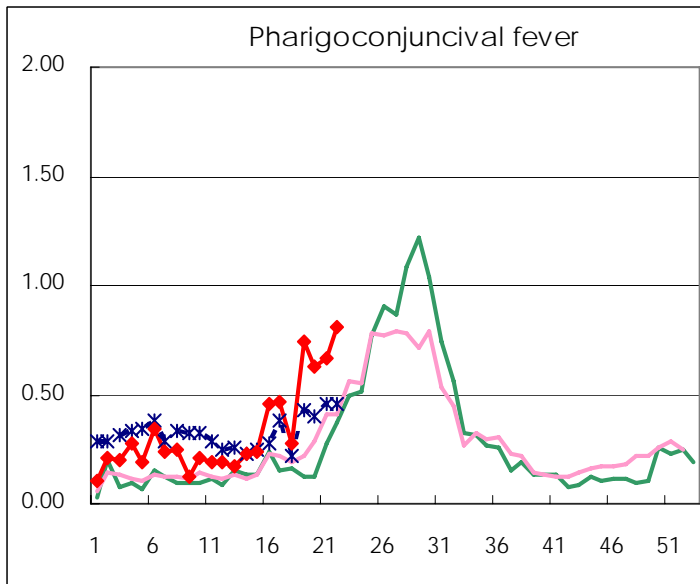
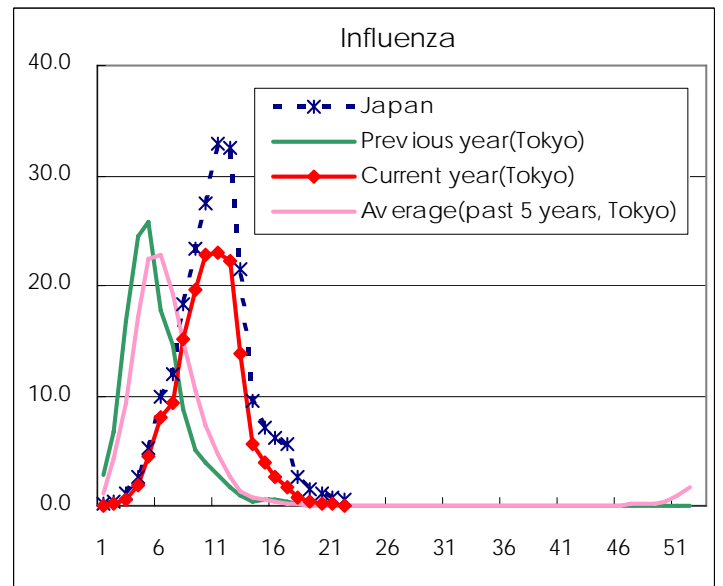
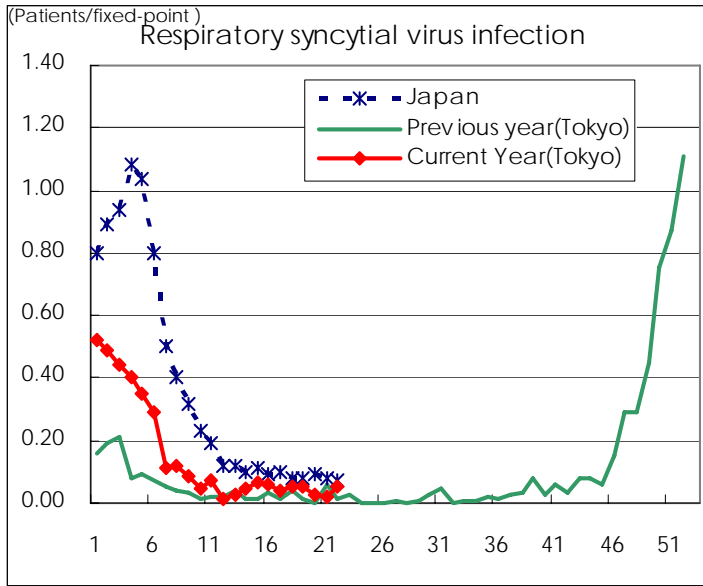
Category	Diseases	Tokyo				Cum 2007	Japan	
		19th	20th	21st	22nd		22nd	Cum 2007
V	Amebiasis	3	2	6	5	64	7	305
	Viral hepatitis(excluding hepatitis A and E)				1	15		70
	Acute encephalitis(excluding JE and WNE)	2	1			5	3	101
	Cryptosporidiosis							3
	Creutzfeldt-Jakob disease	2				6	2	67
	Severe invasive streptococcal infections(TSLS)		1			3		45
	Acquired immunodeficiency syndrome (AIDS)	10	8	18	15	205	9	541
	Giardiasis		1			7		17
	Meningococcal meningitis			1		1		10
	Congenital rubella syndrome							
	Syphilis	5	4	4	4	53	10	229
	Tetanus						3	30
	Vancomycin-resistant S. aureus infection							
	Vancomycin-resistant Enterococcus infection					7	1	31
designated	Influenza (H5N1)							

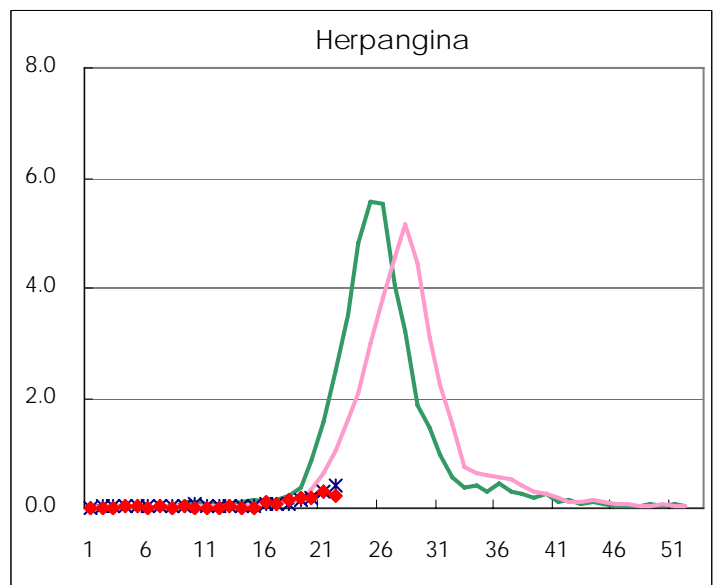
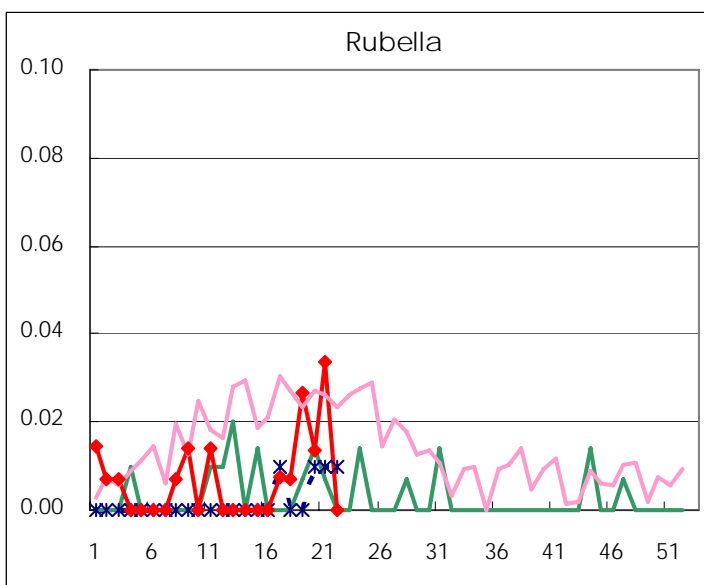
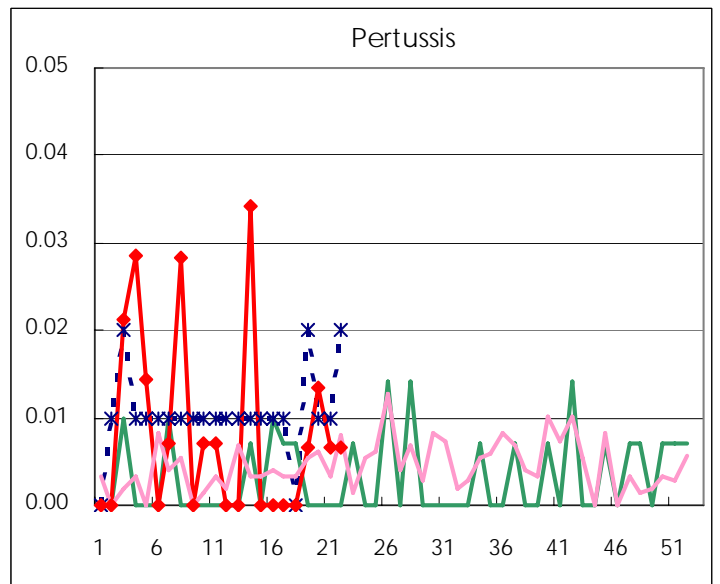
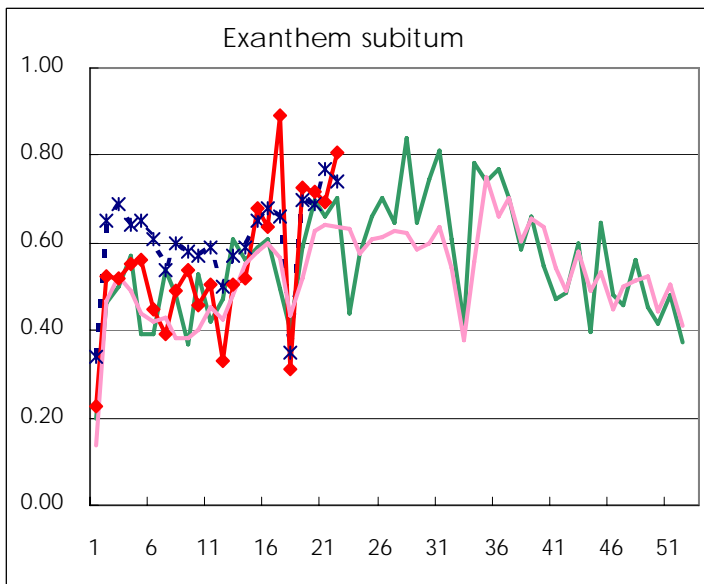
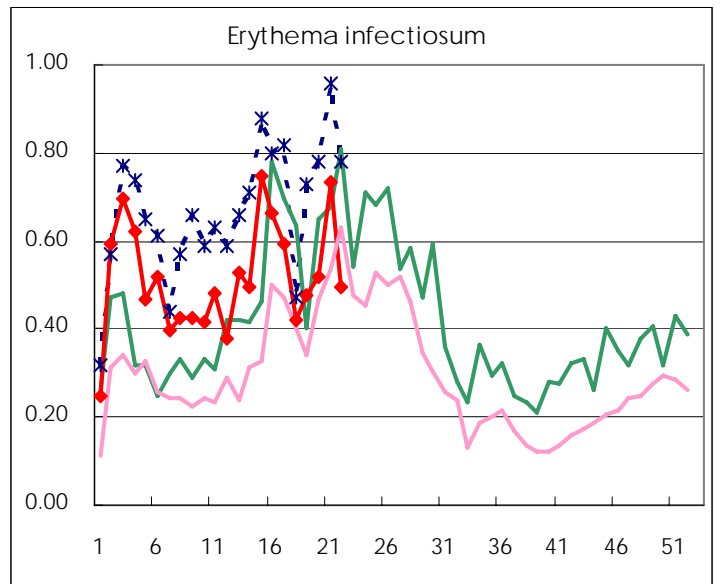
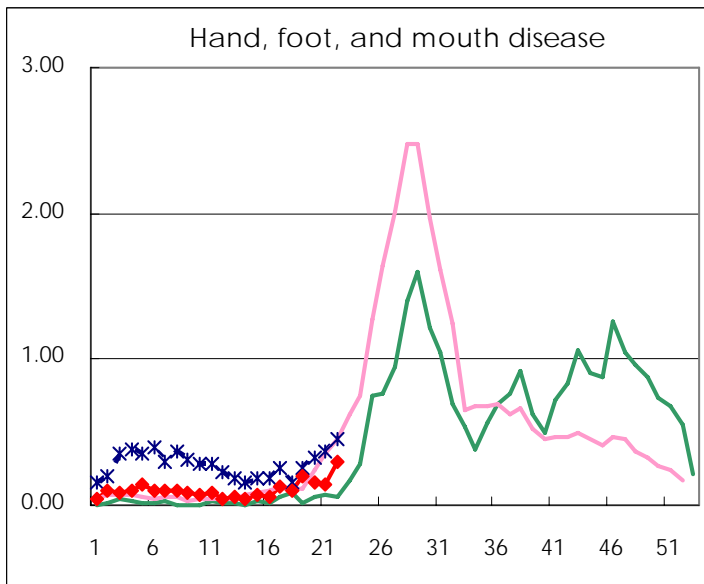
Number of patients with the diseases to be reported  
by the designated clinics and hospitals

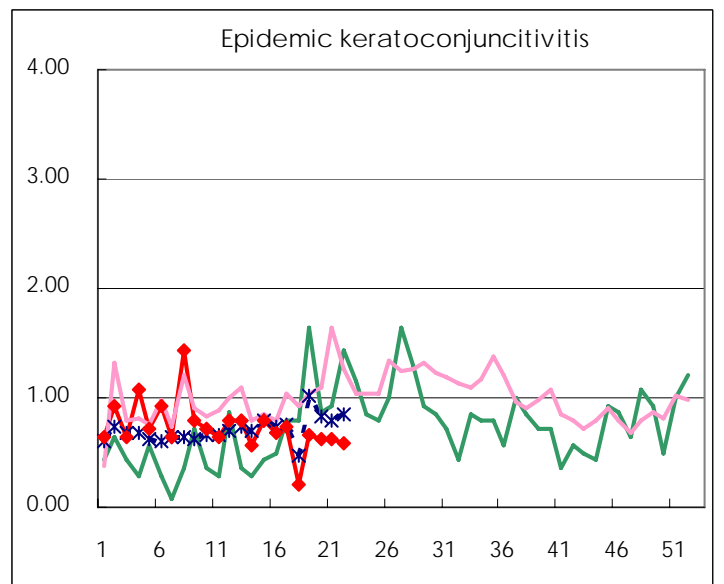
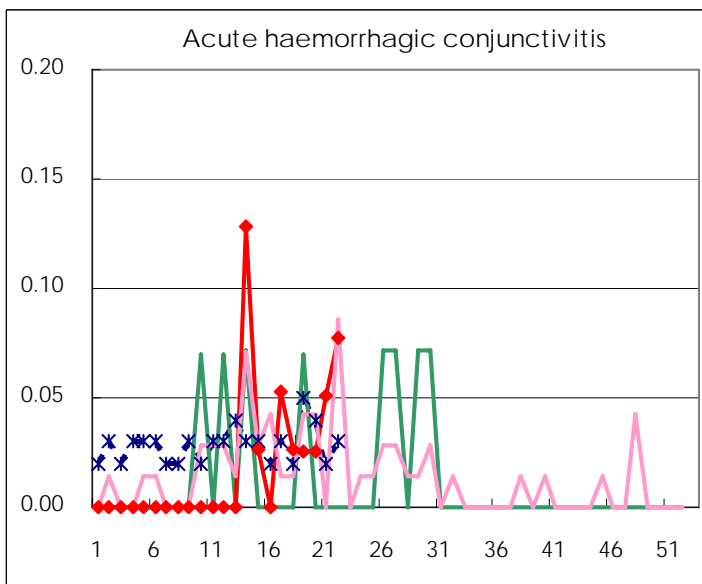
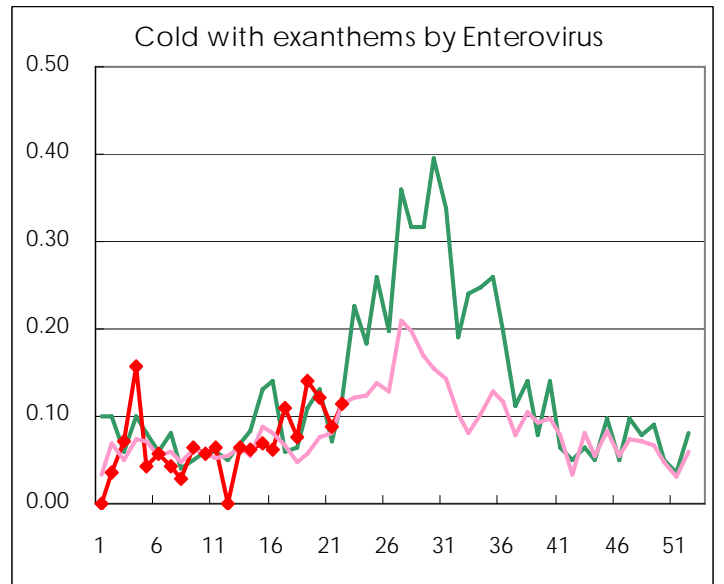
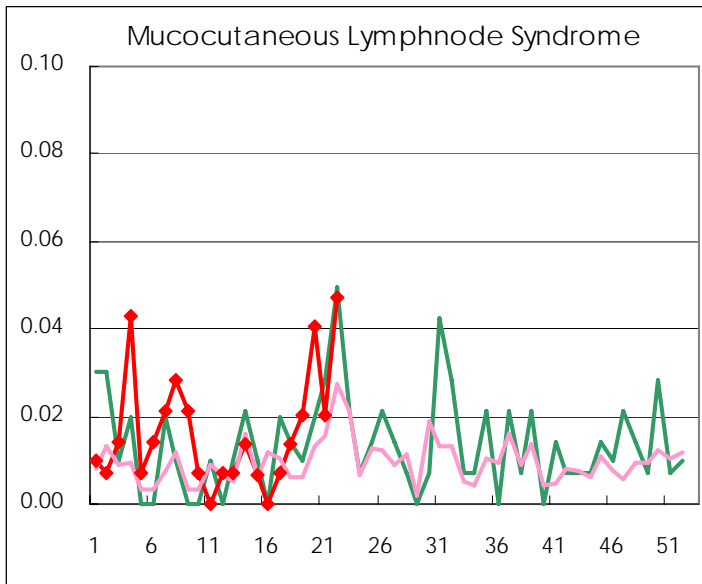
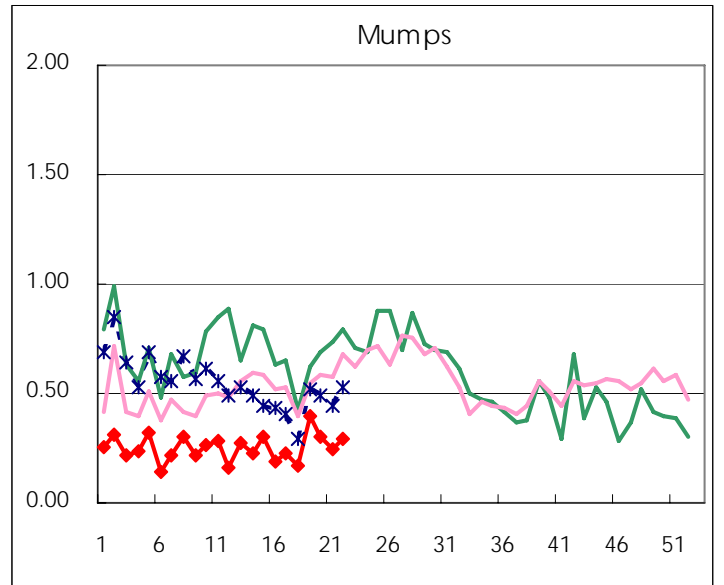
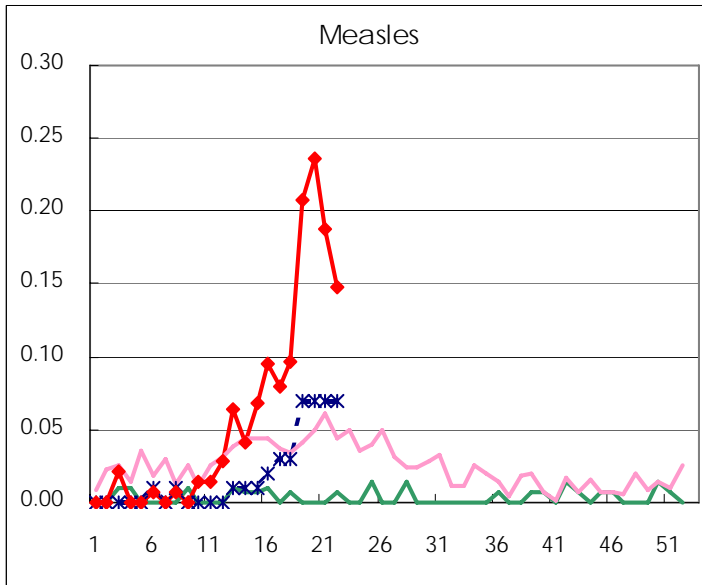
Diseases	2007				4wks total	Cum 2007
	19th	20th	21st	22nd		
Respiratory syncytial virus infection	7	4	3	8	22	478
Influenza	92	34	37	10	173	43749
Pharyngoconjunctival fever	110	93	99	121	423	1045
Group A streptococcal pharyngitis	300	382	415	399	1,496	5730
Infectious gastroenteritis	767	747	930	952	3,396	17556
Chickenpox	403	270	283	261	1,217	4923
Hand, foot, and mouth disease	30	23	21	44	118	327
Erythema infectiosum	71	77	109	74	331	1627
Exanthem subitum	108	106	103	120	437	1739
Pertussis	1	2	1	1	5	22
Rubella	4	2	5		11	22
Herpangina	28	29	43	35	135	217
Measles	31	35	28	22	116	195
Mumps	59	45	37	44	185	799
Cold with exanthems by Enterovirus	21	18	13	17	69	219
Mucocutaneous Lymphnode Syndrome	3	6	3	7	19	52
Acute hemorrhagic conjunctivitis	1	1	2	3	7	16
Epidemic keratoconjunctivitis	26	24	24	23	97	360
Bacterial meningitis	1		4		5	12
Aseptic meningitis	1		1		2	11
Mycoplasma pneumonia	5	6	6	8	25	67
Chlamydial pneumonia (excluding psittacosis)				1	1	3
Measles in adults	21	21	23	23	88	163

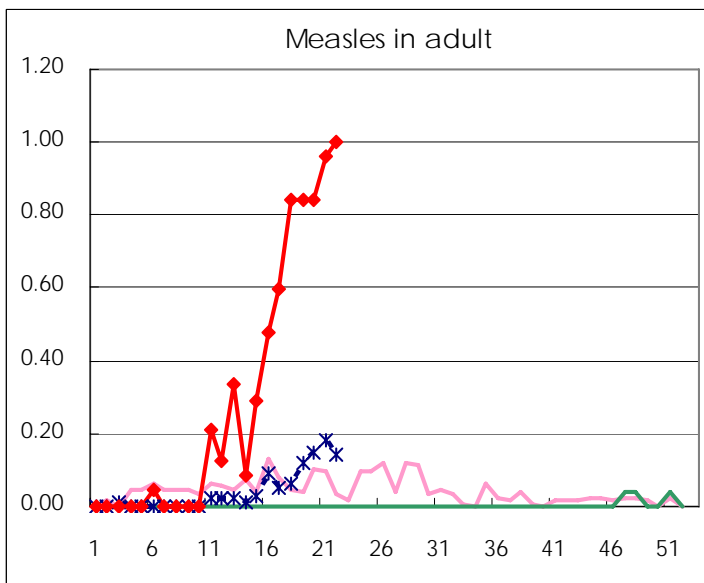
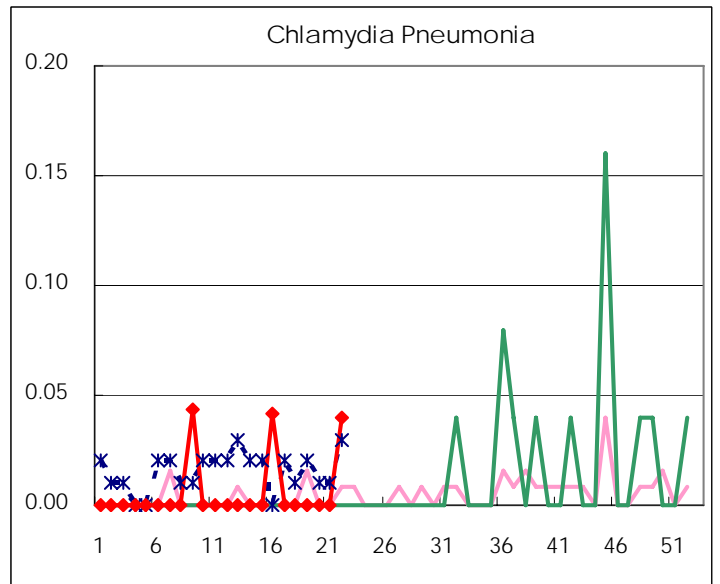
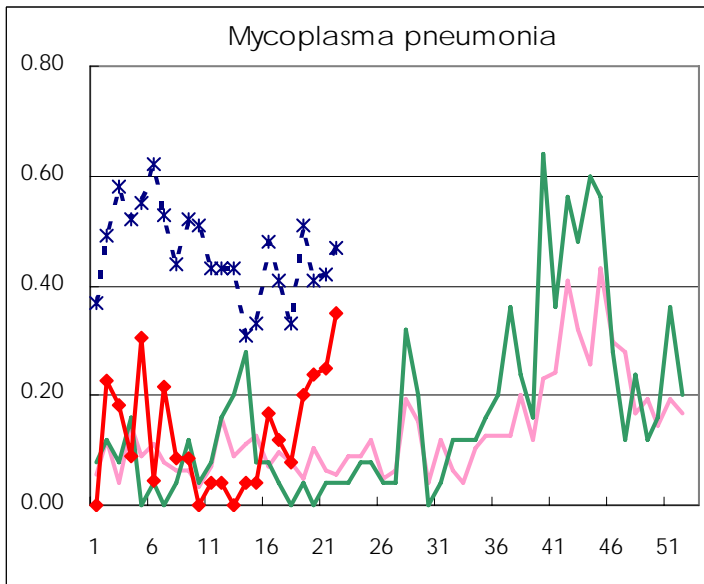
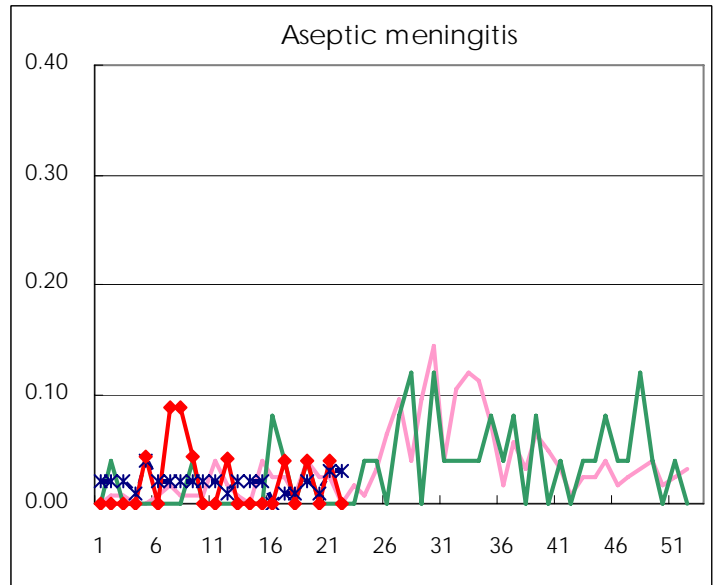
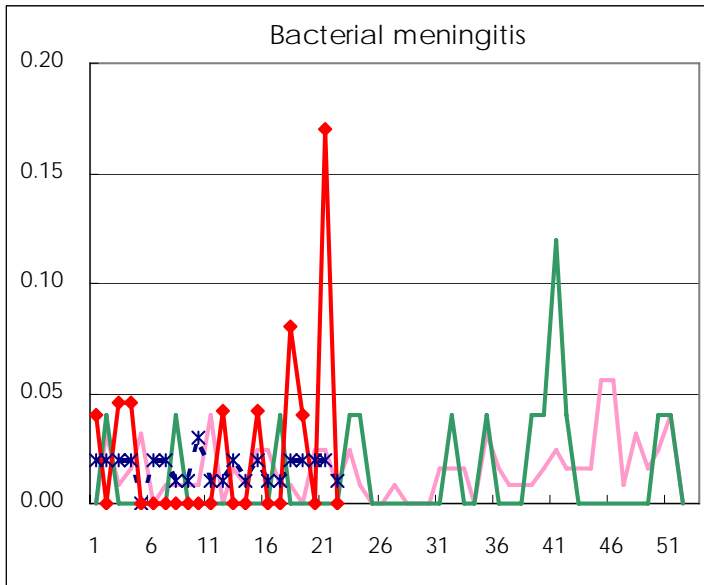
( Blank means 0. )

# Disease Trend Graph (weekly reported cases per fixed-point in comparison)









Number of sentinel facilities for weekly reporting		
Types of sentinels	Number of sentinels	Sentinels having reported
Pediatric	150	149
Influenza	290	283
Ophthalmic	39	39
Specially-designated	25	23

Tokyo Metropolitan Government  
Infectious Disease Surveillance Center