

---

INFECTIOUS DISEASES WEEKLY REPORT

# TOKYO IDWR

Tokyo Metropolitan Infectious Disease Surveillance Center

---

**14 June 2007 / Number 23**

## Surveillance System in Tokyo, Japan

The infectious diseases which all physicians must report

All physicians must report to health centers the incidence of the diseases which are shown at page one. Health centers electronically report the individual cases to Tokyo Metropolitan Infectious Disease Surveillance Center.

The infectious diseases required to be reported by the sentinels

The numbers of patients who visit the sentinel clinics or hospitals during a week are reported to health centers in Tokyo. And they electronically report the numbers to Tokyo Metropolitan Infectious Disease Surveillance Center. We have about 400 sentinel clinics and hospitals in Tokyo.

1st Week is early January and 52nd Week is end of December.

Tokyo Metropolitan Institute of Public Health  
Epidemiological Information Office

TEL:81-3-3363-3213 FAX:81-3-5332-7365

e-mail:[idsc@tokyo-eiken.go.jp](mailto:idsc@tokyo-eiken.go.jp)

URL:[idsc.tokyo-eiken.go.jp/](http://idsc.tokyo-eiken.go.jp/)

---

## Number of patients with the diseases which all physicians must report

Category	Diseases	Tokyo				Japan		
		20th	21st	22nd	23rd	Cum 2007	23rd	Cum 2007
I	Ebola hemorrhagic fever							
	Crimean-Congo hemorrhagic fever							
	Smallpox							
	South American hemorrhagic fever							
	Plague							
	Marburg disease							
	Lassa fever							
II	Acute poliomyelitis							
	Tuberculosis	76	56	50	45	544	193	3112
	Diphtheria							
	Severe Acute Respiratory Syndrome(SARS)							
III	Cholera	1		1		2		8
	Shigellosis	1	2		4	34	20	218
	Enterohemorrhagic Escherichia coli infection	2	2	55	116	190	154	687
	Typhoid fever		1	1		4		16
	Paratyphoid fever					3		7
IV	Hepatitis E					1		26
	West Nile fever							
	Hepatitis A	2		2		14	2	80
	Echinococcosis					2		6
	Yellow fever							
	Psittacosis					1	1	11
	Omsk hemorrhagic fever							
	Relapsing fever							
	Kyasanur forest disease							
	Q fever							3
	Rabies							
	Coccidioidomycosis					1		2
	Monkeypox							
	Hemorrhagic fever with renal syndrome							
	Western equine encephalitis							
	Tick-borne encephalitis							
	Anthrax							
	Scrub typhus(Tsutsugamushi disease)					2	3	74
	Dengue fever			1	1	3	1	23
	Eastern equine encephalitis							
	Avian influenza virus infection							
	Nipah virus infection							
	Japanese spotted fever						1	8
	Japanese encephalitis							1
	Epidemic typhus							
	Hantavirus pulmonary syndrome							
	Herpes B virus infection							
	Glanders							
	Brucellosis							1
	Venezuelan equine encephalitis							
	Hendra virus infection							
	Botulism							2
	Malaria		1	1		10		18
Tularemia								
Lyme disease								
Lyssavirus infection(excluding rabies)								
Rift valley fever								
Melioidosis								
Legionellosis			2		11	12	181	
Leptospirosis					2		3	
Rocky mountain spotted fever								

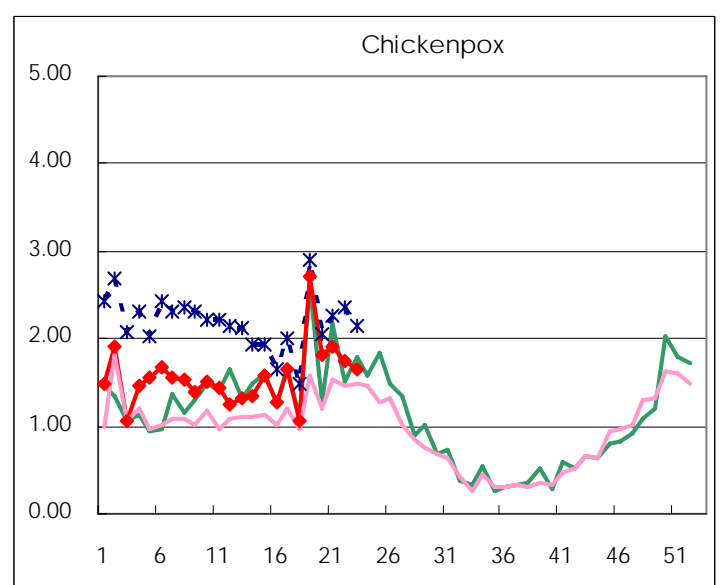
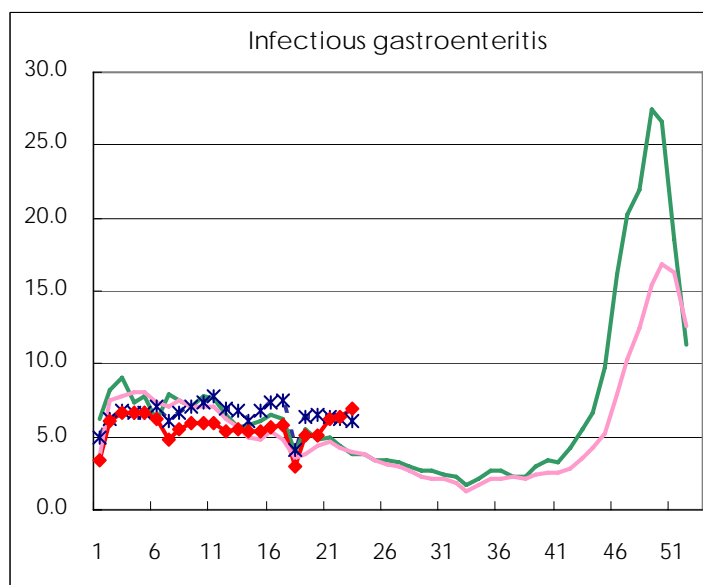
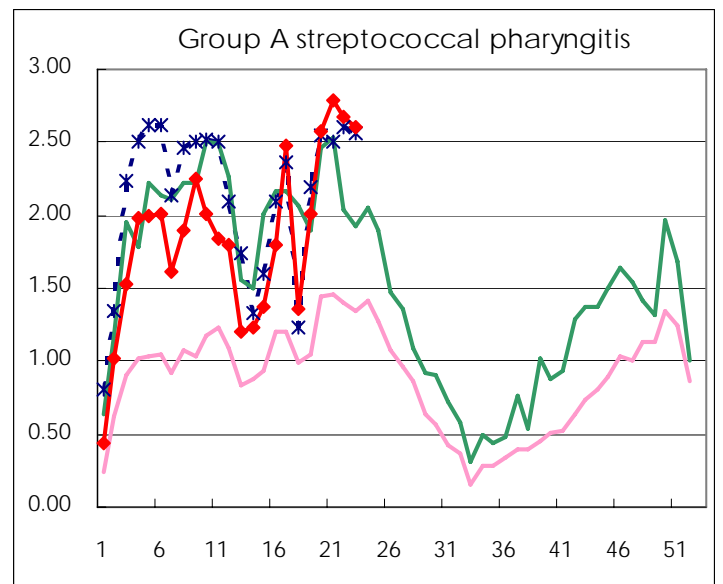
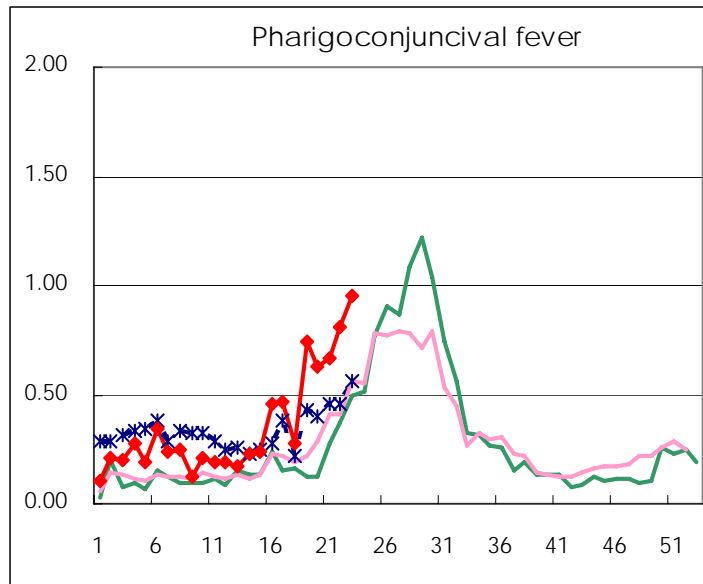
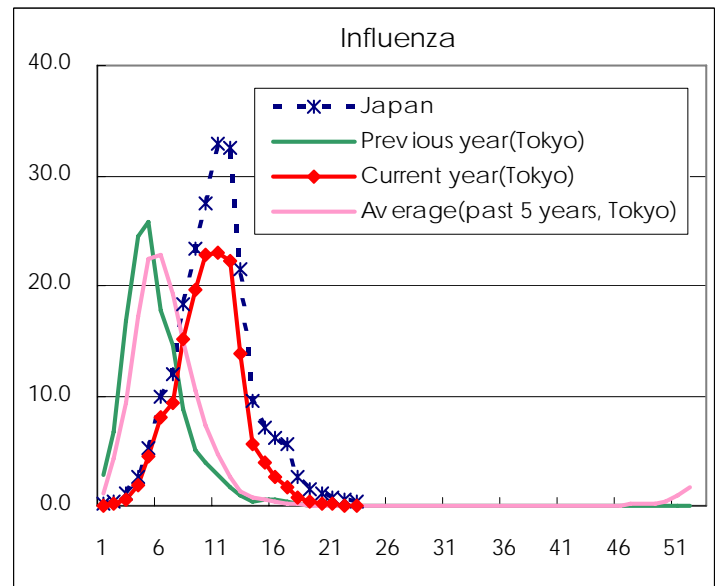
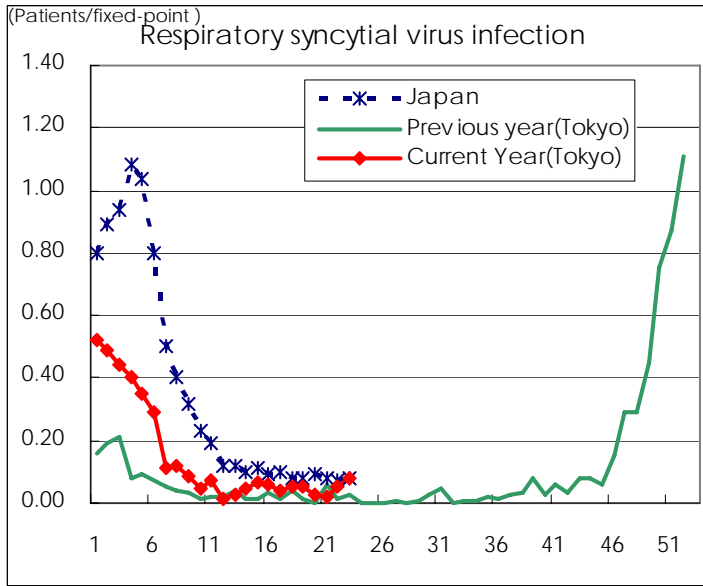
Category	Diseases	Tokyo				Japan		
		20th	21st	22nd	23rd	Cum 2007	23rd	Cum 2007
V	Amebiasis	2	6	5	4	68	3	317
	Viral hepatitis(excluding hepatitis A and E)			2		16	2	80
	Acute encephalitis(excluding JE and WNE)	1				5	3	107
	Cryptosporidiosis						1	4
	Creutzfeldt-Jakob disease					6	1	68
	Severe invasive streptococcal infections(TSLS)	1				3	1	47
	Acquired immunodeficiency syndrome (AIDS)	8	18	15	9	214	17	581
	Giardiasis	1				7		19
	Meningococcal meningitis		1			1		10
	Congenital rubella syndrome							
	Syphilis	4	3	4	3	56	6	242
	Tetanus						1	32
	Vancomycin-resistant S. aureus infection							
	Vancomycin-resistant Enterococcus infection					7		31
designated	Influenza (H5N1)							

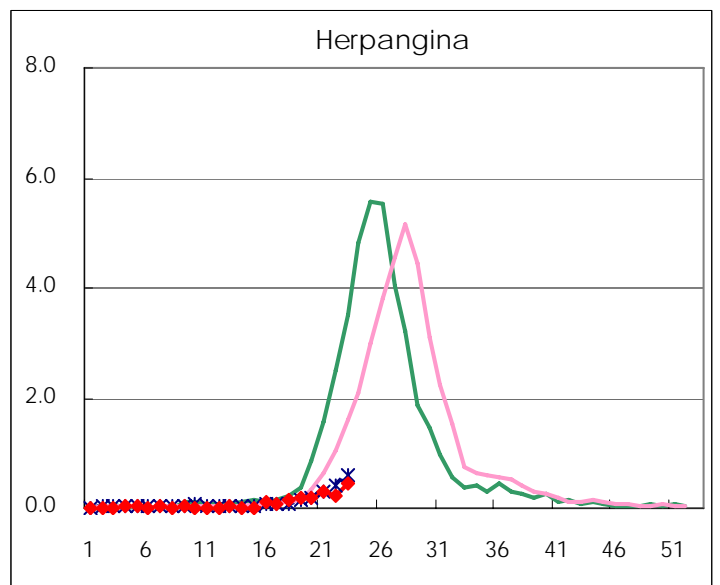
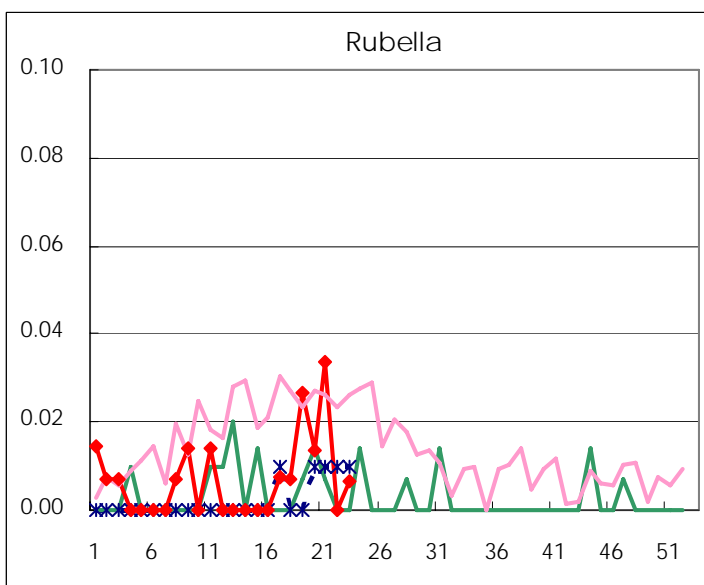
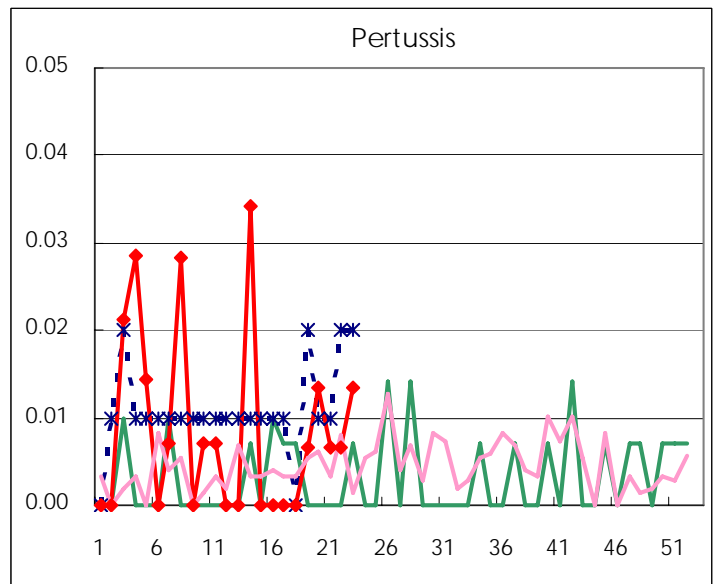
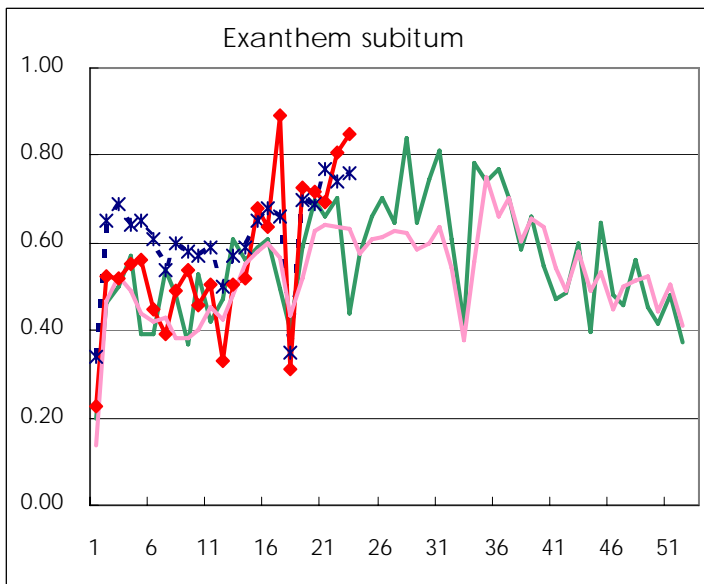
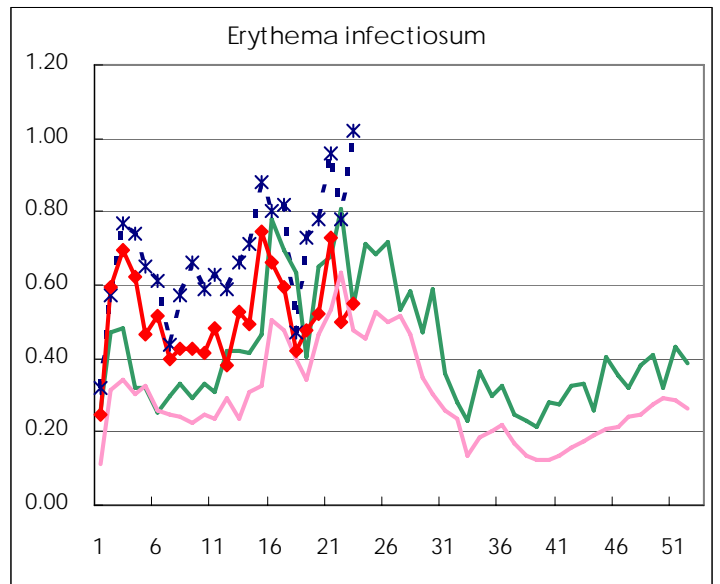
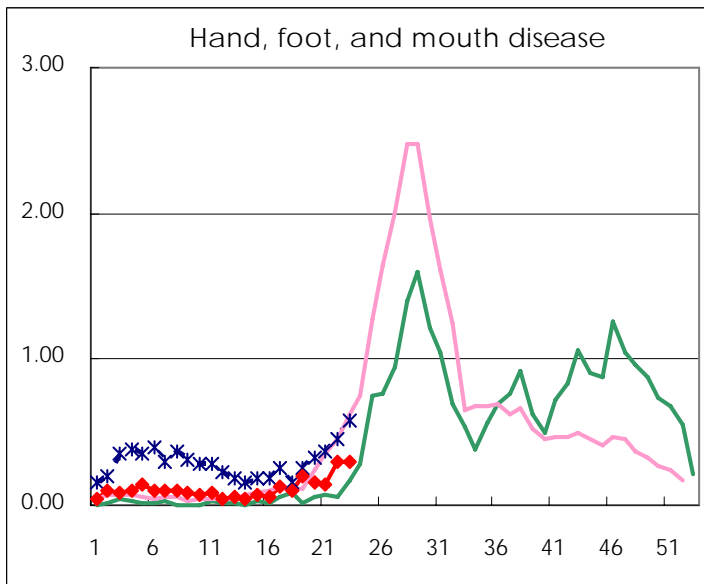
Number of patients with the diseases to be reported  
by the designated clinics and hospitals

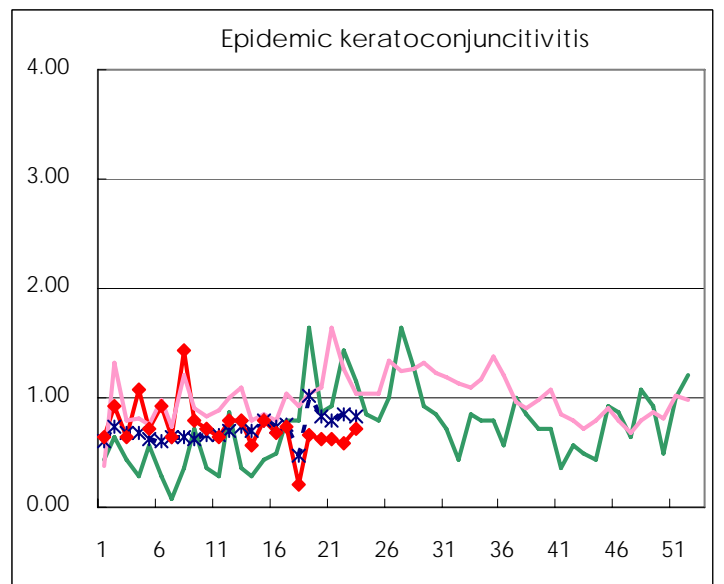
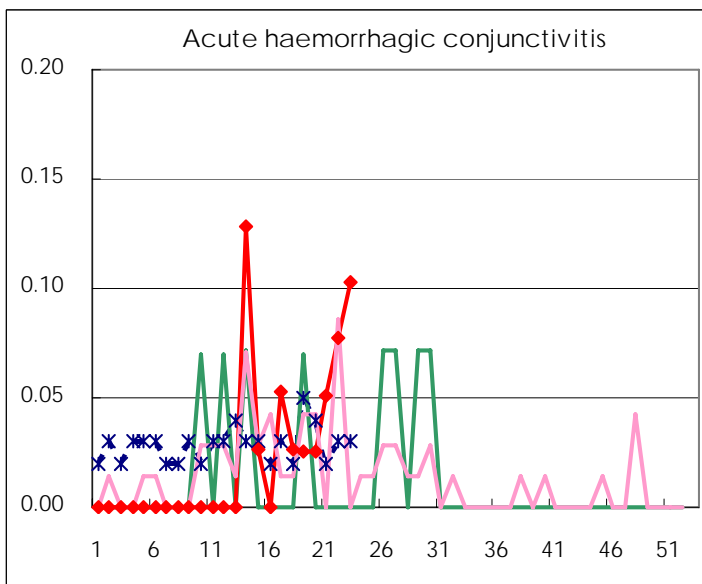
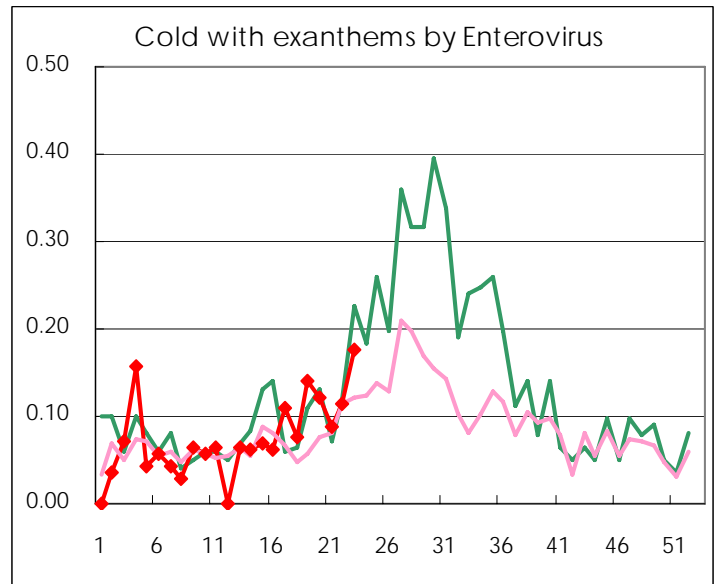
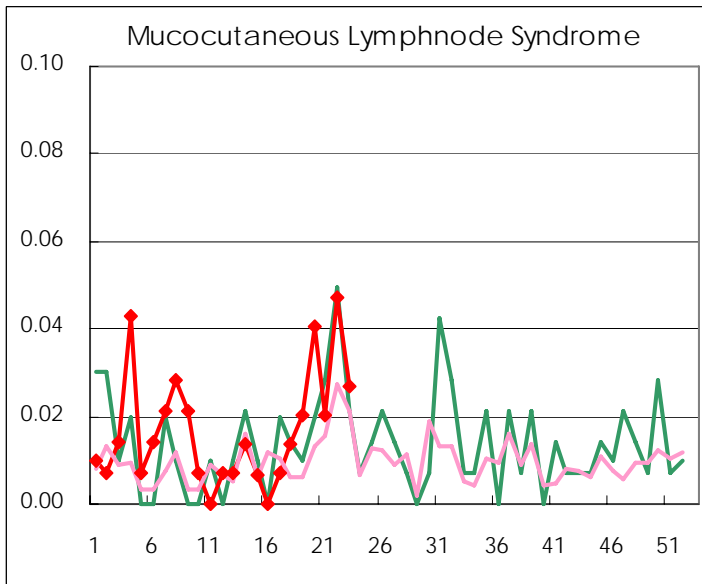
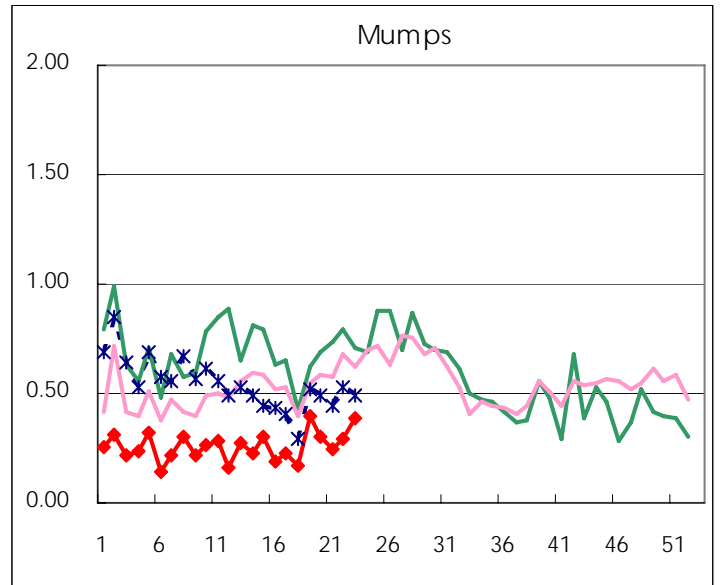
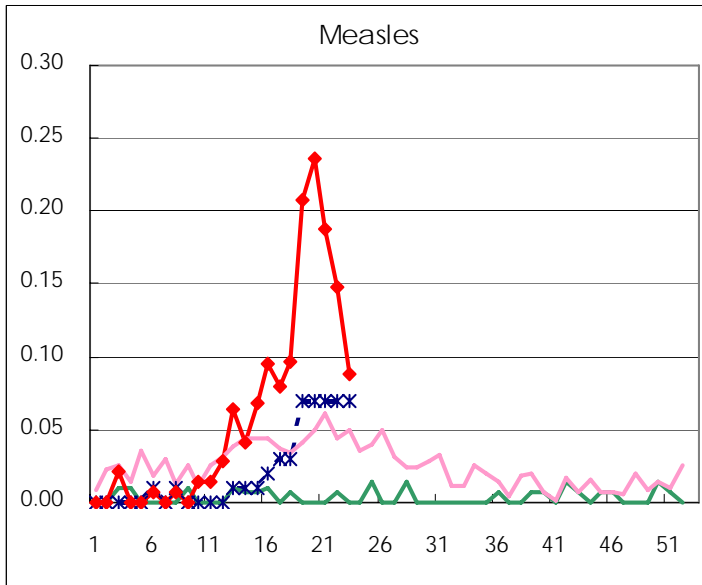
Diseases	2007				4wks total	Cum 2007
	20th	21st	22nd	23rd		
Respiratory syncytial virus infection	4	3	8	12	27	490
Influenza	34	37	10	8	89	43758
Pharyngoconjunctival fever	93	99	121	141	454	1186
Group A streptococcal pharyngitis	382	415	399	386	1,582	6116
Infectious gastroenteritis	747	930	952	1,029	3,658	18585
Chickenpox	270	283	261	246	1,060	5170
Hand, foot, and mouth disease	23	21	44	44	132	371
Erythema infectiosum	77	109	74	81	341	1708
Exanthem subitum	106	103	120	126	455	1865
Pertussis	2	1	1	2	6	24
Rubella	2	5		1	8	23
Herpangina	29	43	35	64	171	281
Measles	35	28	22	13	98	208
Mumps	45	37	44	57	183	856
Cold with exanthems by Enterovirus	18	13	17	26	74	245
Mucocutaneous Lymphnode Syndrome	6	3	7	4	20	56
Acute hemorrhagic conjunctivitis	1	2	3	4	10	20
Epidemic keratoconjunctivitis	24	24	23	28	99	388
Bacterial meningitis		4			4	12
Aseptic meningitis		1			1	11
Mycoplasma pneumonia	6	6	8	10	30	77
Chlamydial pneumonia (excluding psittacosis)			1	1	2	4
Measles in adults	21	23	23	17	84	183

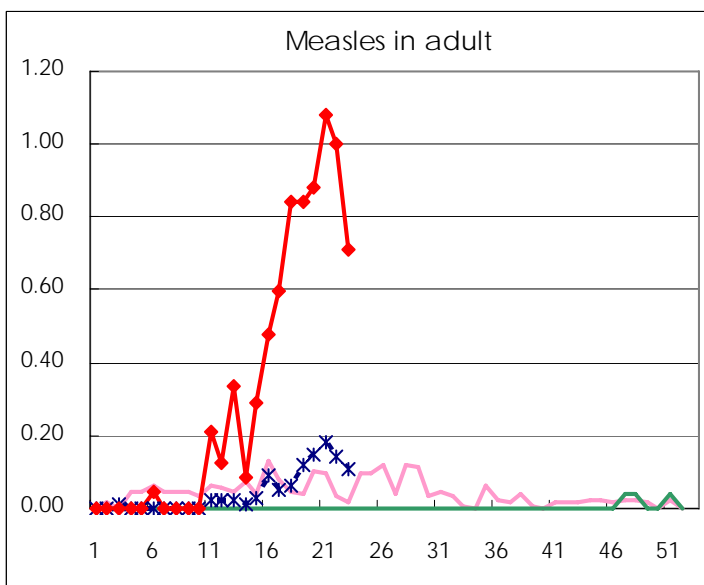
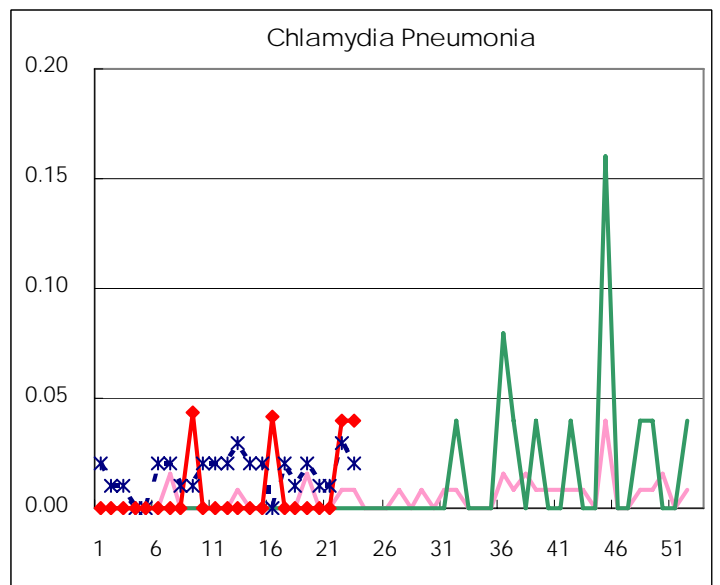
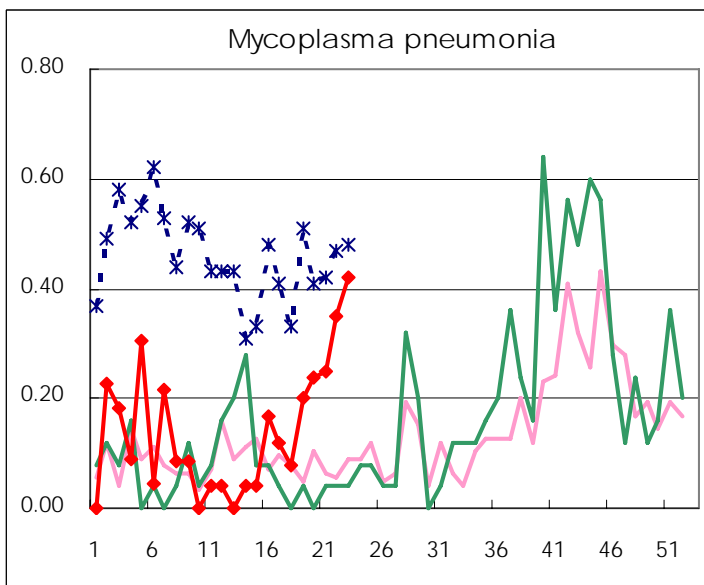
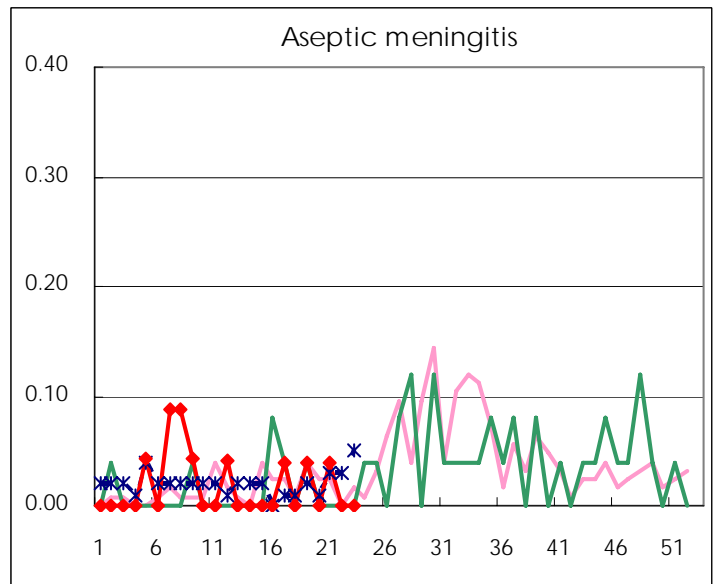
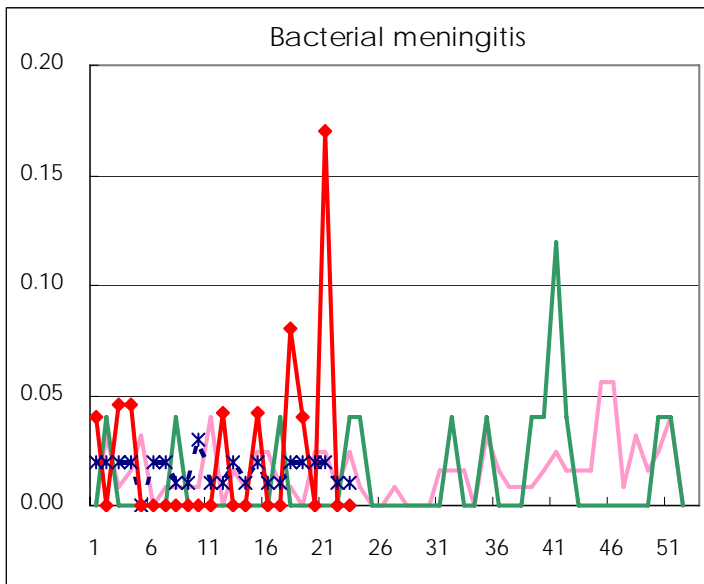
( Blank means 0. )

# Disease Trend Graph (weekly reported cases per fixed-point in comparison)









Number of sentinel facilities for weekly reporting		
Types of sentinels	Number of sentinels	Sentinels having reported
Pediatric	150	148
Influenza	290	286
Ophthalmic	39	39
Specially-designated	25	24

Tokyo Metropolitan Government  
Infectious Disease Surveillance Center