

---

INFECTIOUS DISEASES WEEKLY REPORT

# TOKYO IDWR

Tokyo Metropolitan Infectious Disease Surveillance Center

## 21 June 2007 / Number 24

### Surveillance System in Tokyo, Japan

The infectious diseases which all physicians must report

All physicians must report to health centers the incidence of the diseases which are shown at page one. Health centers electronically report the individual cases to Tokyo Metropolitan Infectious Disease Surveillance Center.

The infectious diseases required to be reported by the sentinels

The numbers of patients who visit the sentinel clinics or hospitals during a week are reported to health centers in Tokyo. And they electronically report the numbers to Tokyo Metropolitan Infectious Disease Surveillance Center. We have about 400 sentinel clinics and hospitals in Tokyo.

1st Week is early January and 52nd Week is end of December.

Tokyo Metropolitan Institute of Public Health  
Epidemiological Information Office

TEL:81-3-3363-3213 FAX:81-3-5332-7365

e-mail:[idsc@tokyo-eiken.go.jp](mailto:idsc@tokyo-eiken.go.jp)

URL:[idsc.tokyo-eiken.go.jp/](http://idsc.tokyo-eiken.go.jp/)

---

## Number of patients with the diseases which all physicians must report

Category	Diseases	Tokyo				Japan		
		21st	22nd	23rd	24th	Cum 2007	24th	Cum 2007
I	Ebola hemorrhagic fever							
	Crimean-Congo hemorrhagic fever							
	Smallpox							
	South American hemorrhagic fever							
	Plague							
	Marburg disease							
	Lassa fever							
II	Acute poliomyelitis							
	Tuberculosis	63	68	64	54	658	222	3532
	Diphtheria							
	Severe Acute Respiratory Syndrome(SARS)							
III	Cholera		1			2		8
	Shigellosis	2		4		34	20	238
	Enterohemorrhagic Escherichia coli infection	2	55	115	13	202	69	769
	Typhoid fever	1	1			4		16
	Paratyphoid fever					3		7
IV	Hepatitis E					1	1	29
	West Nile fever							
	Hepatitis A		2			14		81
	Echinococcosis					2		7
	Yellow fever							
	Psittacosis					1	1	12
	Omsk hemorrhagic fever							
	Relapsing fever							
	Kyasanur forest disease							
	Q fever							3
	Rabies							
	Coccidioidomycosis					1		2
	Monkeypox							
	Hemorrhagic fever with renal syndrome							
	Western equine encephalitis							
	Tick-borne encephalitis							
	Anthrax							
	Scrub typhus(Tsutsugamushi disease)					2	1	79
	Dengue fever		1	1		3		24
	Eastern equine encephalitis							
	Avian influenza virus infection							
	Nipah virus infection							
	Japanese spotted fever						1	9
	Japanese encephalitis							1
	Epidemic typhus							
	Hantavirus pulmonary syndrome							
	Herpes B virus infection							
	Glanders							
	Brucellosis							1
	Venezuelan equine encephalitis							
	Hendra virus infection							
	Botulism							2
	Malaria	1	1		1	11	3	21
Tularemia								
Lyme disease						1	1	
Lyssavirus infection(excluding rabies)								
Rift valley fever								
Melioidosis								
Legionellosis		2		1	12	13	200	
Leptospirosis					2		3	
Rocky mountain spotted fever								

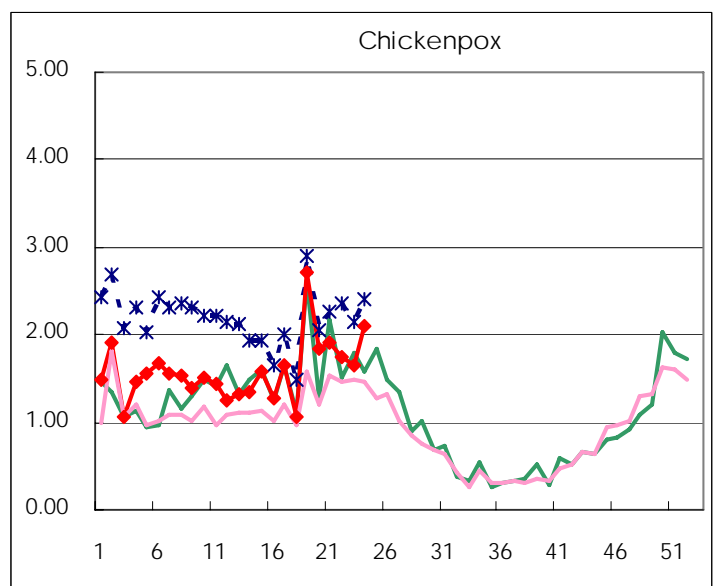
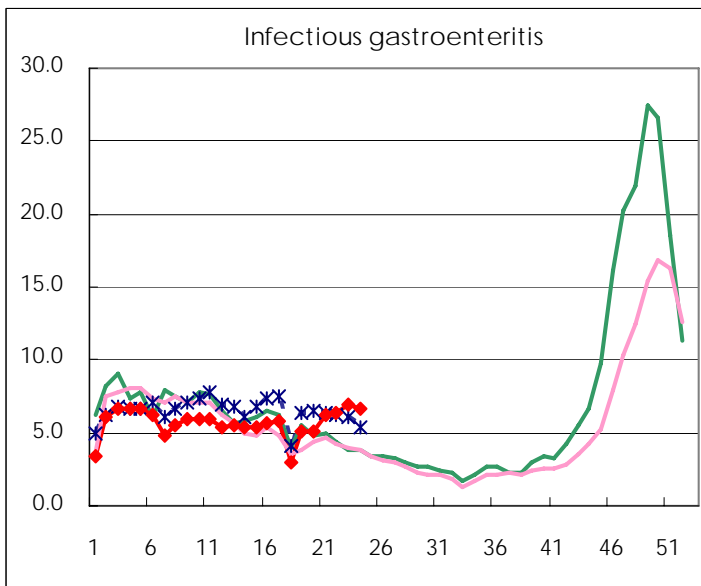
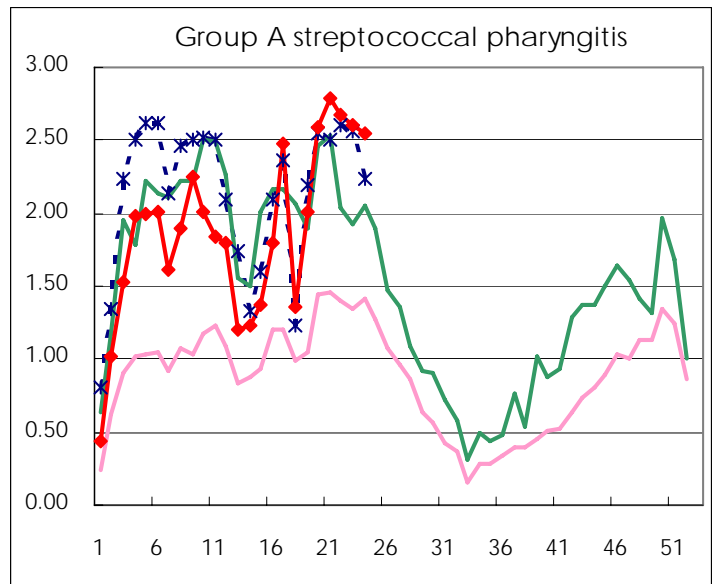
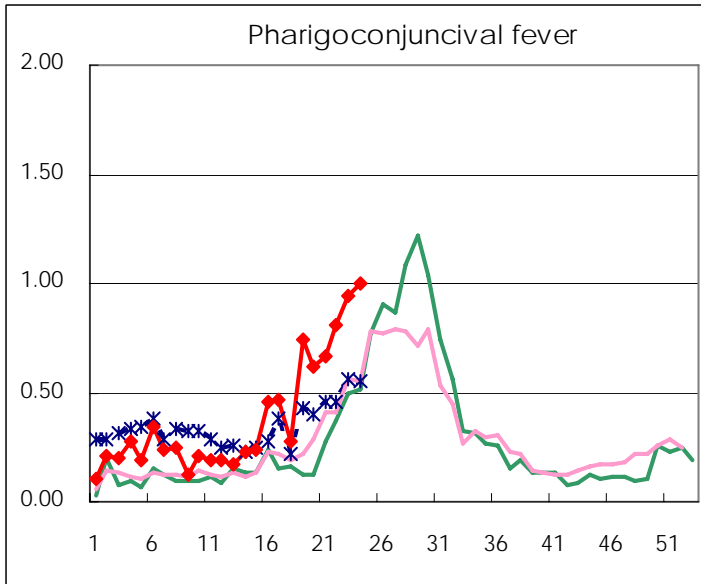
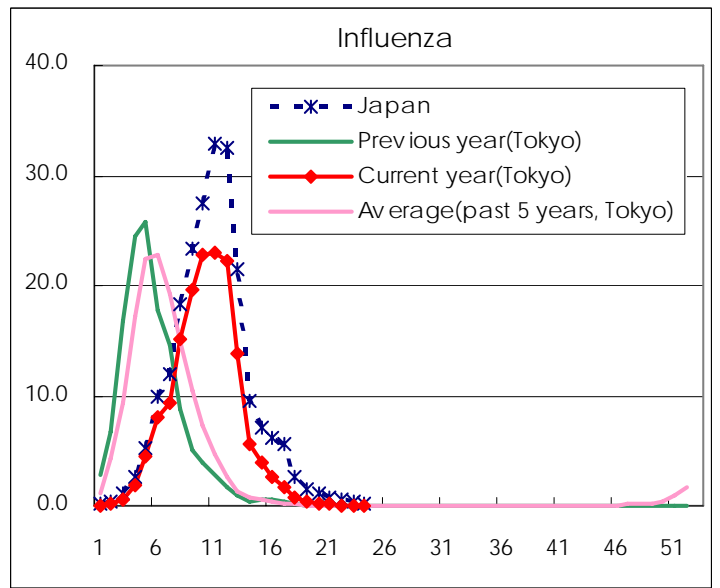
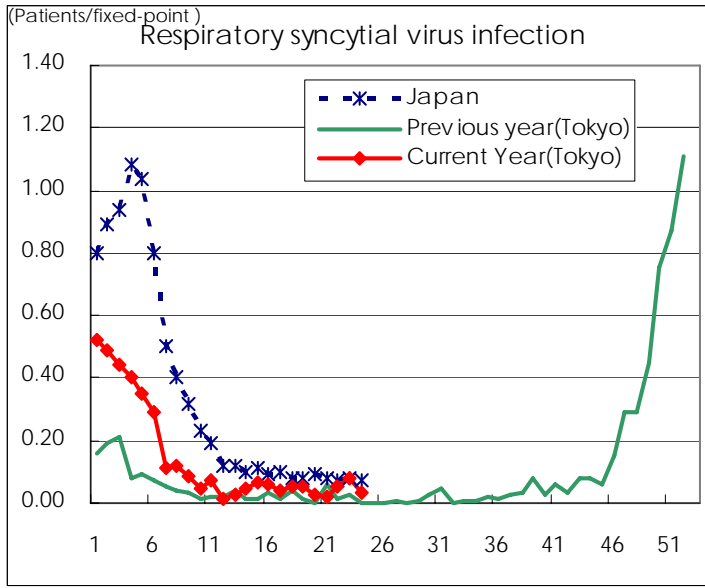
Category	Diseases	Tokyo				Japan		
		21st	22nd	23rd	24th	Cum 2007	24th	Cum 2007
V	Amebiasis	6	5	4	4	72	16	343
	Viral hepatitis(excluding hepatitis A and E)		2			16	3	85
	Acute encephalitis(excluding JE and WNE)				1	6	1	111
	Cryptosporidiosis							4
	Creutzfeldt-Jakob disease				1	7	3	75
	Severe invasive streptococcal infections(TSLS)					3		48
	Acquired immunodeficiency syndrome (AIDS)	18	15	9	8	222	13	615
	Giardiasis					7		20
	Meningococcal meningitis	1				1		10
	Congenital rubella syndrome							
	Syphilis	3	4	3	3	59	9	257
	Tetanus						2	36
	Vancomycin-resistant S. aureus infection							
	Vancomycin-resistant Enterococcus infection				1	8	2	34
designated	Influenza (H5N1)							

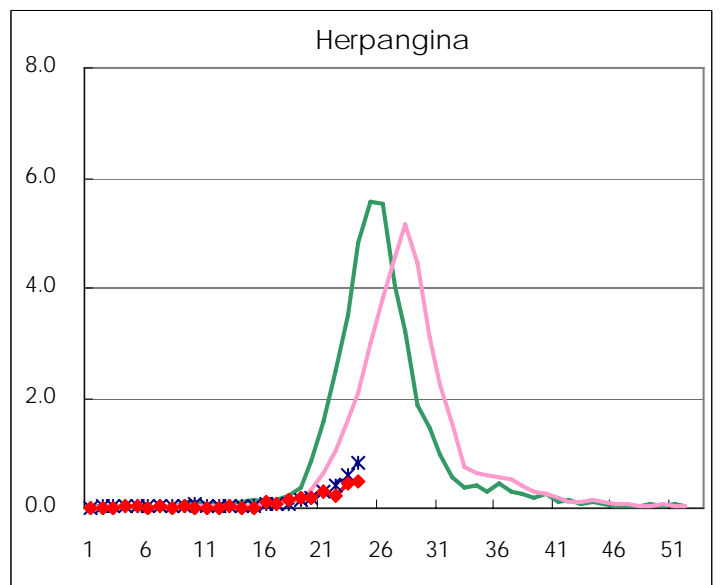
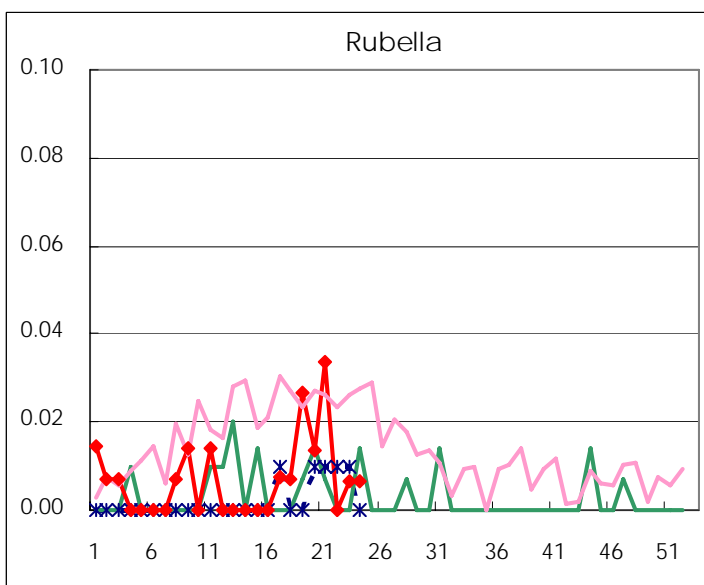
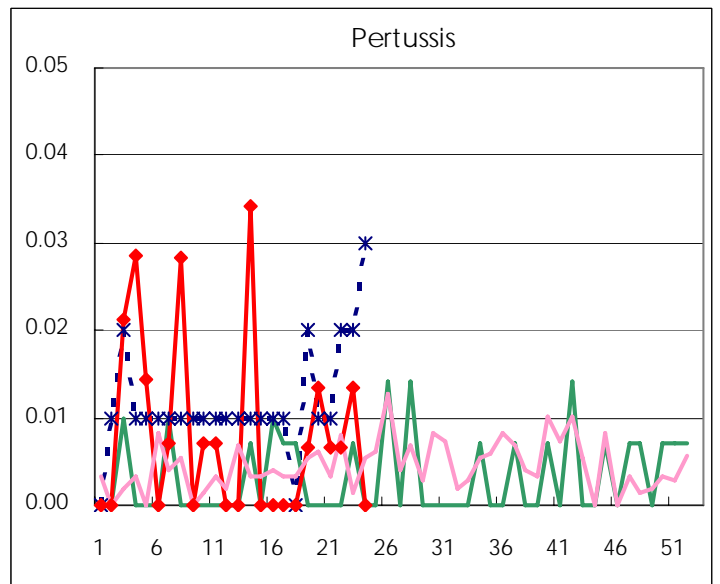
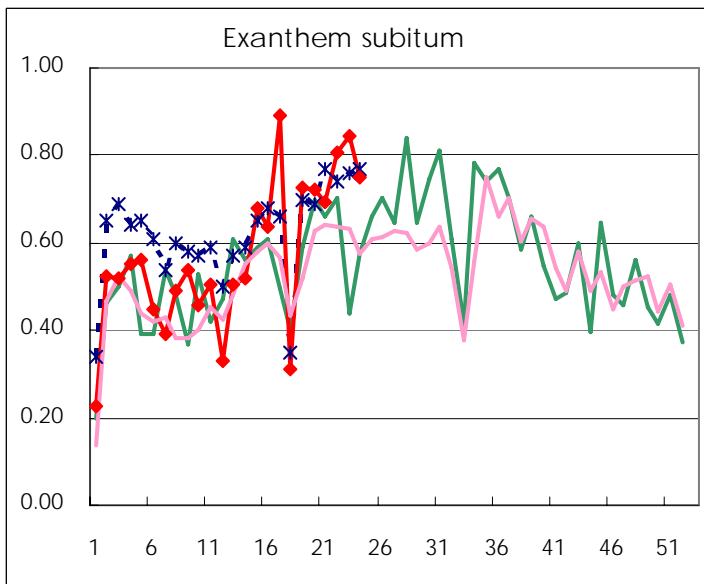
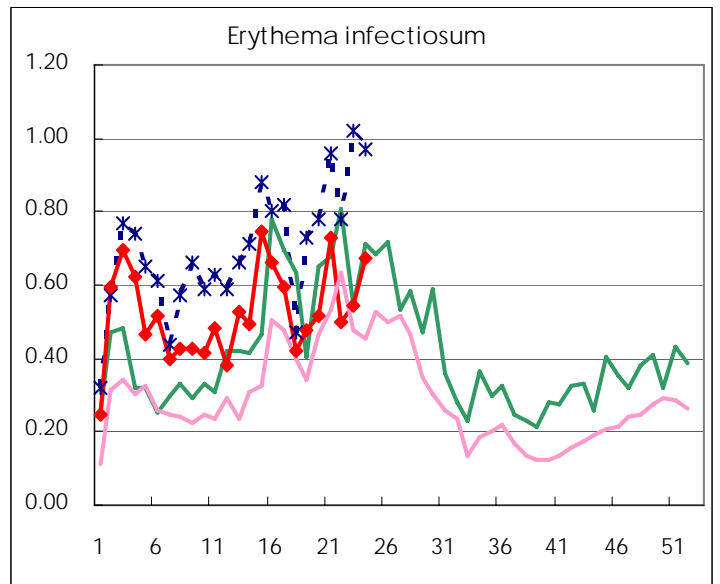
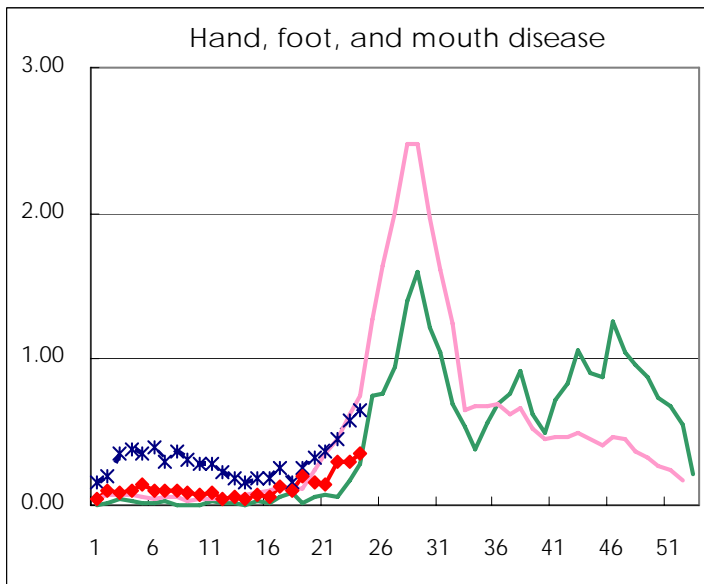
Number of patients with the diseases to be reported  
by the designated clinics and hospitals

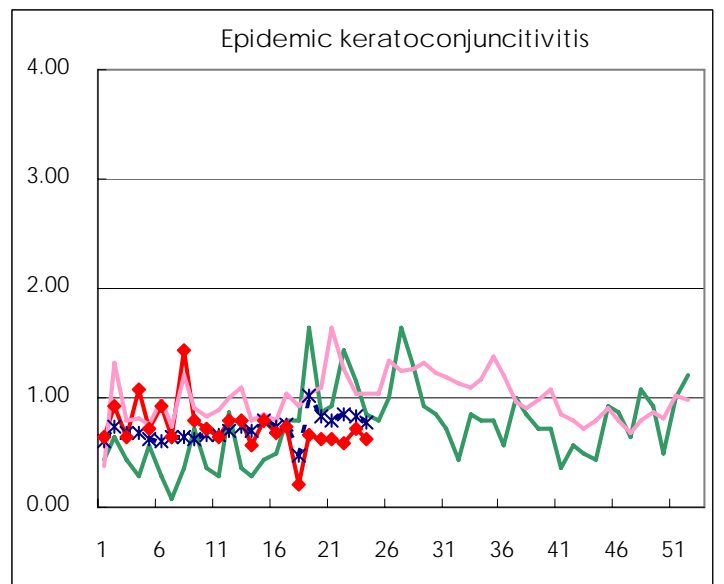
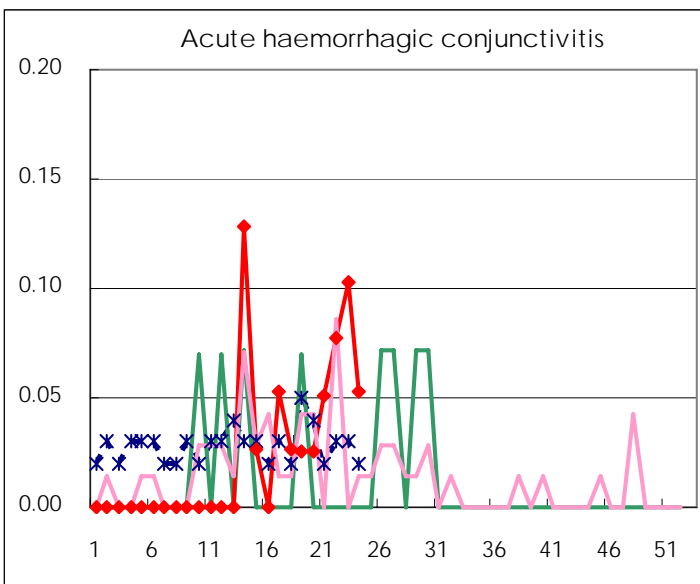
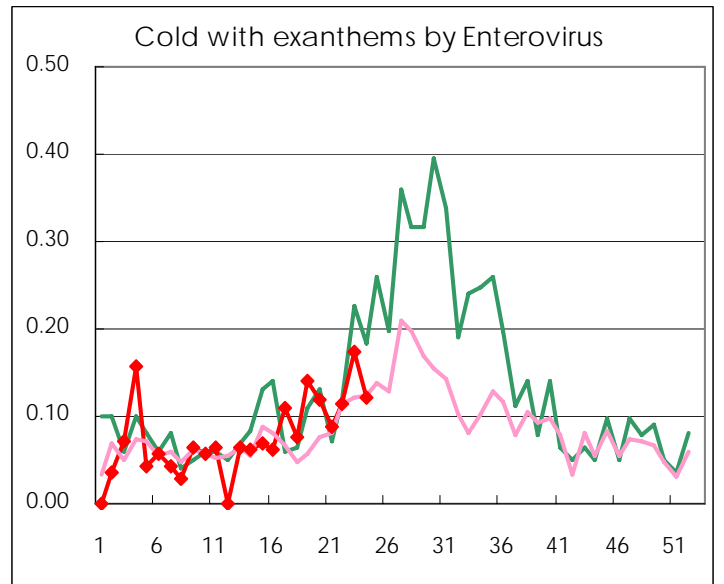
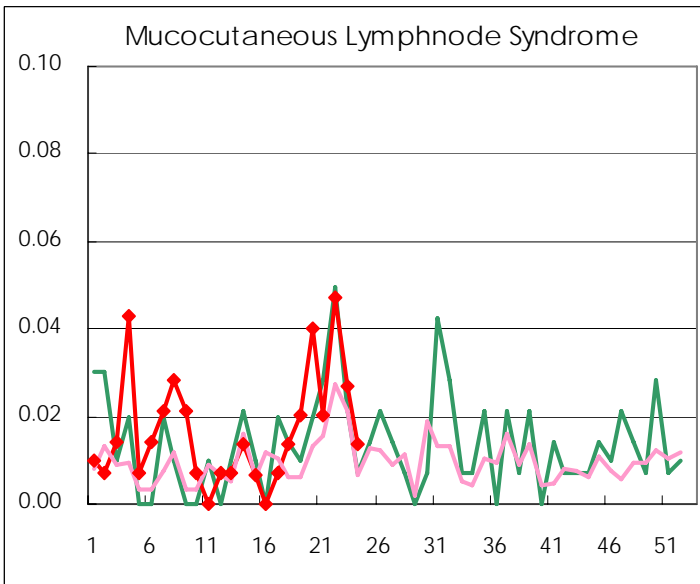
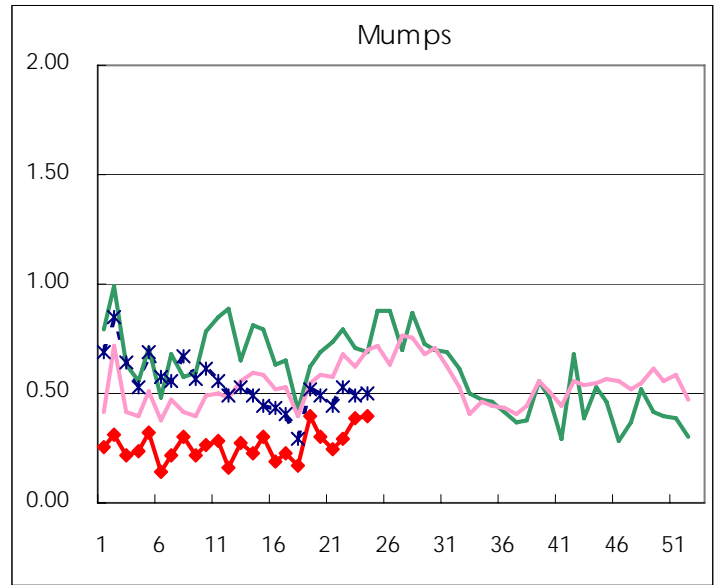
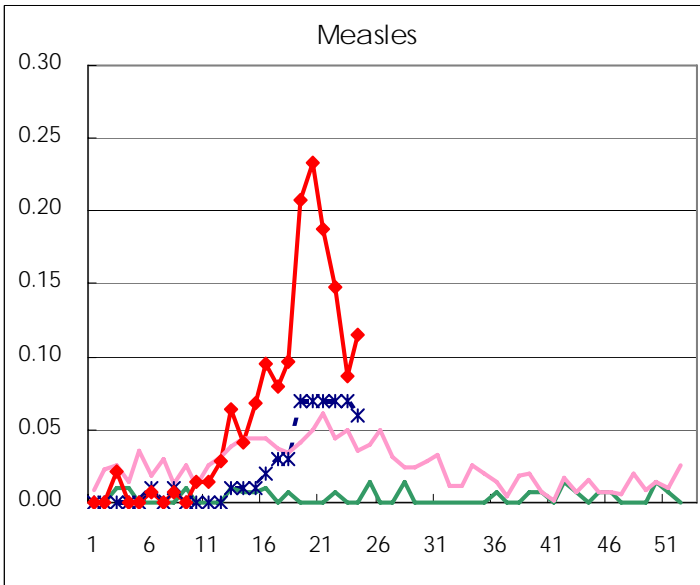
Diseases	2007				4wks total	Cum 2007
	21st	22nd	23rd	24th		
Respiratory syncytial virus infection	3	8	12	5	28	495
Influenza	37	10	8	4	59	43762
Pharyngoconjunctival fever	99	121	141	148	509	1334
Group A streptococcal pharyngitis	415	399	388	376	1,578	6494
Infectious gastroenteritis	930	952	1,030	980	3,892	19566
Chickenpox	283	261	246	312	1,102	5482
Hand, foot, and mouth disease	21	44	44	52	161	423
Erythema infectiosum	109	74	81	100	364	1808
Exanthem subitum	103	120	126	111	460	1976
Pertussis	1	1	2		4	24
Rubella	5		1	1	7	24
Herpangina	43	35	67	70	215	354
Measles	28	22	13	17	80	225
Mumps	37	44	57	59	197	915
Cold with exanthems by Enterovirus	13	17	26	18	74	263
Mucocutaneous Lymphnode Syndrome	3	7	4	2	16	58
Acute hemorrhagic conjunctivitis	2	3	4	2	11	22
Epidemic keratoconjunctivitis	24	23	28	24	99	412
Bacterial meningitis	4				4	12
Aseptic meningitis	1			1	2	12
Mycoplasma pneumonia	6	8	10	2	26	79
Chlamydial pneumonia (excluding psittacosis)		1	1		2	4
Measles in adults	26	23	17	16	82	199

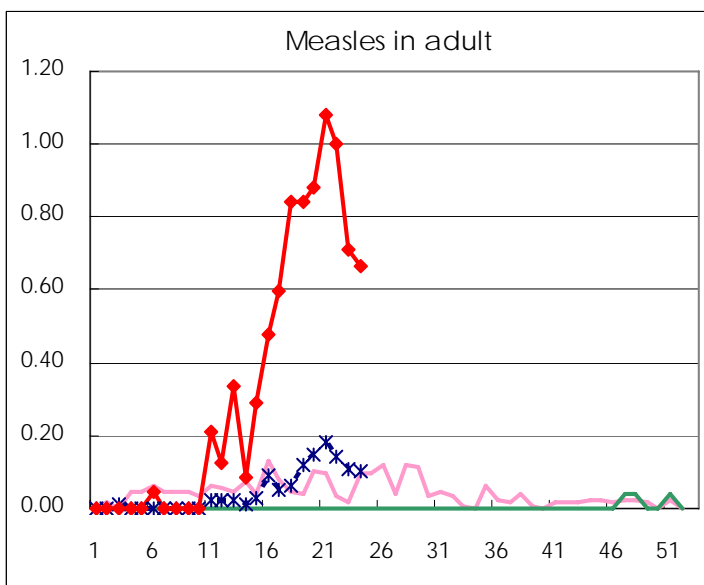
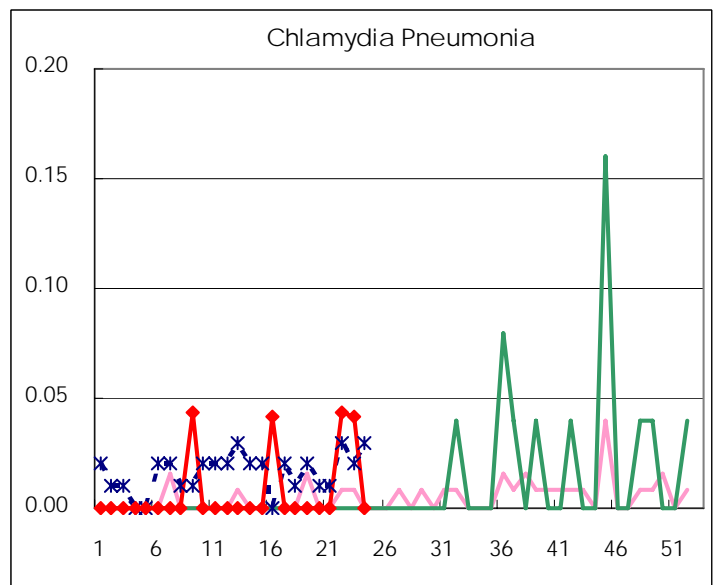
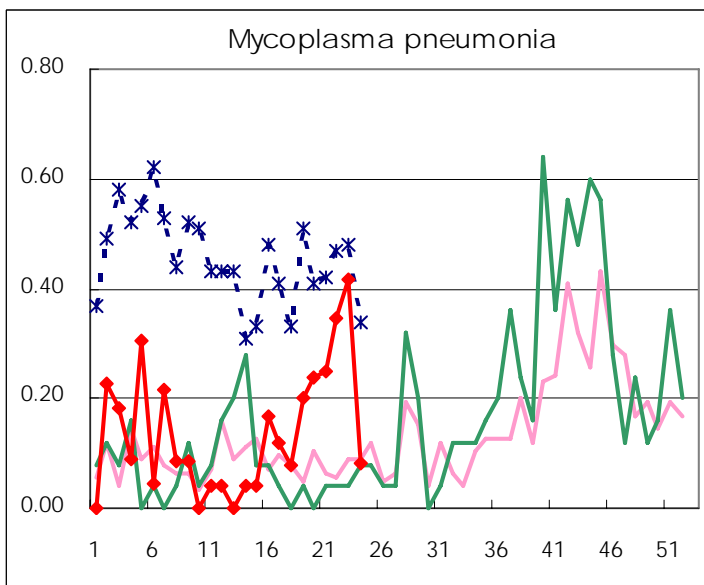
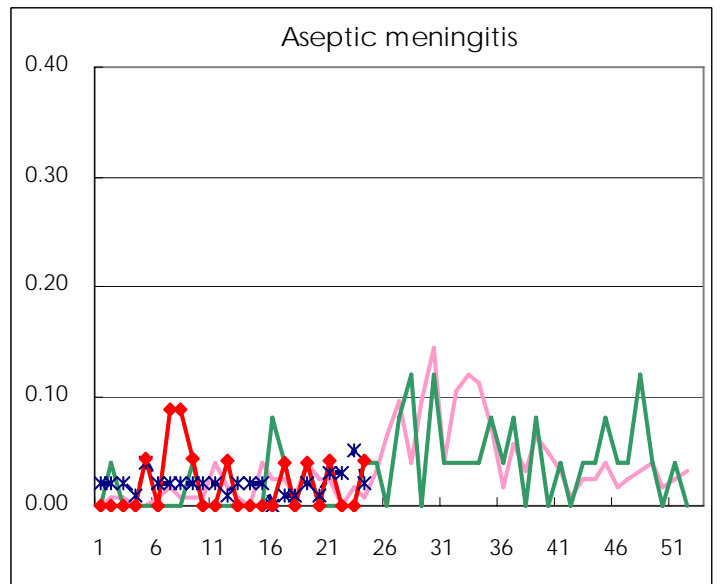
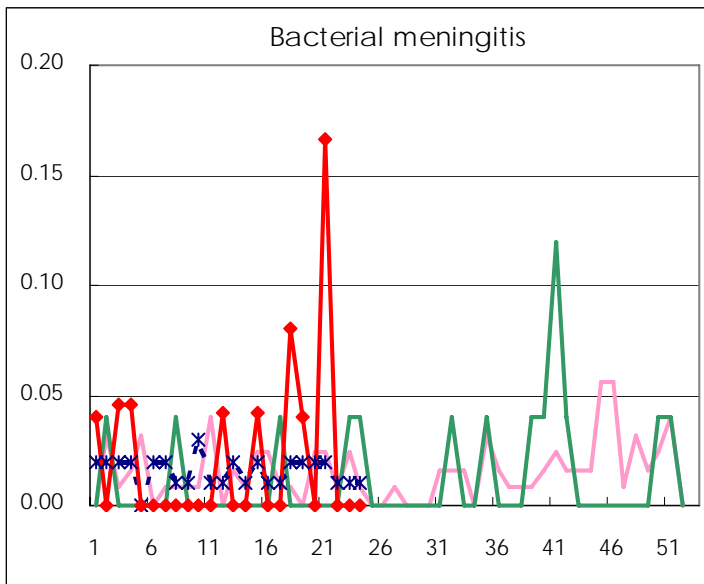
( Blank means 0. )

# Disease Trend Graph (weekly reported cases per fixed-point in comparison)









Number of sentinel facilities for weekly reporting		
Types of sentinels	Number of sentinels	Sentinels having reported
Pediatric	150	148
Influenza	290	286
Ophthalmic	39	38
Specially-designated	25	24

Tokyo Metropolitan Government  
Infectious Disease Surveillance Center