
INFECTIOUS DISEASES WEEKLY REPORT

TOKYO IDWR

Tokyo Metropolitan Infectious Disease Surveillance Center

12 July 2007 / Number 27

Surveillance System in Tokyo, Japan

The infectious diseases which all physicians must report

All physicians must report to health centers the incidence of the diseases which are shown at page one. Health centers electronically report the individual cases to Tokyo Metropolitan Infectious Disease Surveillance Center.

The infectious diseases required to be reported by the sentinels

The numbers of patients who visit the sentinel clinics or hospitals during a week are reported to health centers in Tokyo. And they electronically report the numbers to Tokyo Metropolitan Infectious Disease Surveillance Center. We have about 400 sentinel clinics and hospitals in Tokyo.

1st Week is early January and 52nd Week is end of December.

Tokyo Metropolitan Institute of Public Health
Epidemiological Information Office

TEL:81-3-3363-3213 FAX:81-3-5332-7365

e-mail:idsc@tokyo-eiken.go.jp

URL:idsc.tokyo-eiken.go.jp/

Number of patients with the diseases which all physicians must report

Category	Diseases	Tokyo				Japan		
		24th	25th	26th	27th	Cum 2007	27th	Cum 2007
I	Ebola hemorrhagic fever							
	Crimean-Congo hemorrhagic fever							
	Smallpox							
	South American hemorrhagic fever							
	Plague							
	Marburg disease							
	Lassa fever							
II	Acute poliomyelitis							
	Tuberculosis	75	86	64	36	918	217	4949
	Diphtheria							
	Severe Acute Respiratory Syndrome(SARS)							
III	Cholera					2		9
	Shigellosis		2	1	1	38	5	255
	Enterohemorrhagic Escherichia coli infection	13	13	10	20	247	142	1193
	Typhoid fever					4		17
	Paratyphoid fever					3		8
IV	Hepatitis E					1	1	31
	West Nile fever							
	Hepatitis A					14	5	89
	Echinococcosis					2		7
	Yellow fever							
	Psittacosis					1		18
	Omsk hemorrhagic fever							
	Relapsing fever							
	Kyasanur forest disease							
	Q fever							3
	Rabies							
	Coccidioidomycosis					1		2
	Monkeypox							
	Hemorrhagic fever with renal syndrome							
	Western equine encephalitis							
	Tick-borne encephalitis							
	Anthrax							
	Scrub typhus(Tsutsugamushi disease)					2	1	85
	Dengue fever		1	1	1	6	2	30
	Eastern equine encephalitis							
	Avian influenza virus infection							
	Nipah virus infection							
	Japanese spotted fever						3	15
	Japanese encephalitis							1
	Epidemic typhus							
	Hantavirus pulmonary syndrome							
	Herpes B virus infection							
	Glanders							
	Brucellosis							1
	Venezuelan equine encephalitis							
	Hendra virus infection							
	Botulism							2
	Malaria	1		1	1	13	2	24
Tularemia								
Lyme disease							2	
Lyssavirus infection(excluding rabies)								
Rift valley fever								
Melioidosis								
Legionellosis	1	3	1	2	18	18	255	
Leptospirosis					2		3	
Rocky mountain spotted fever								

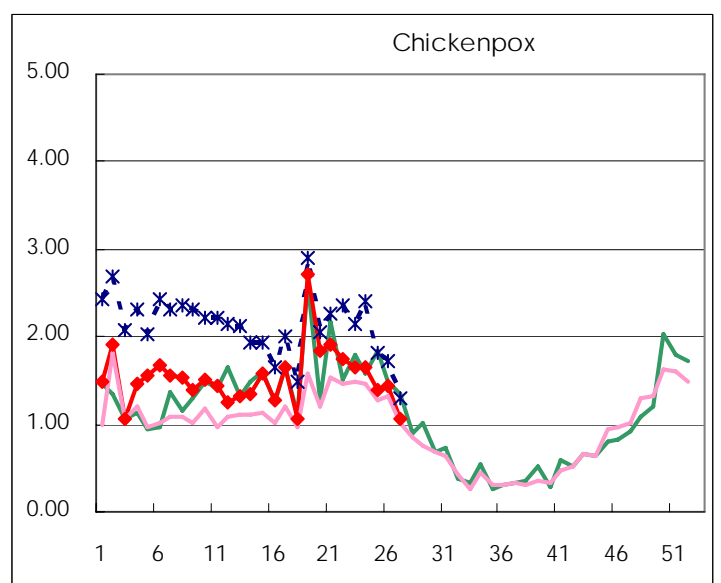
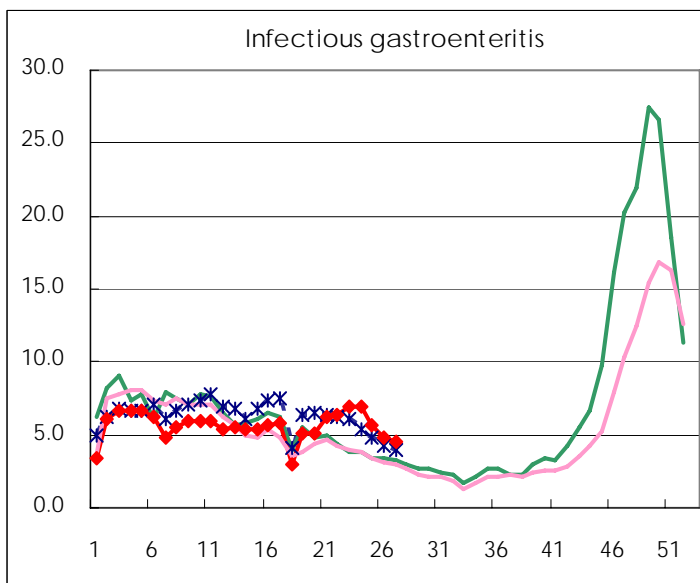
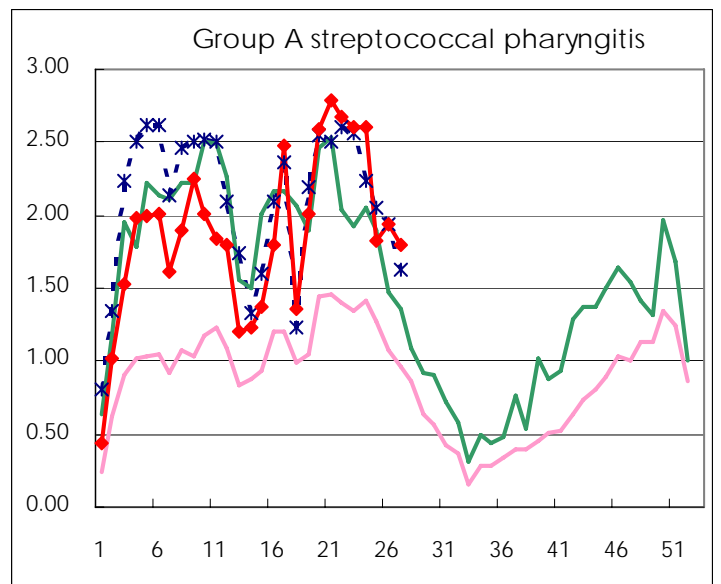
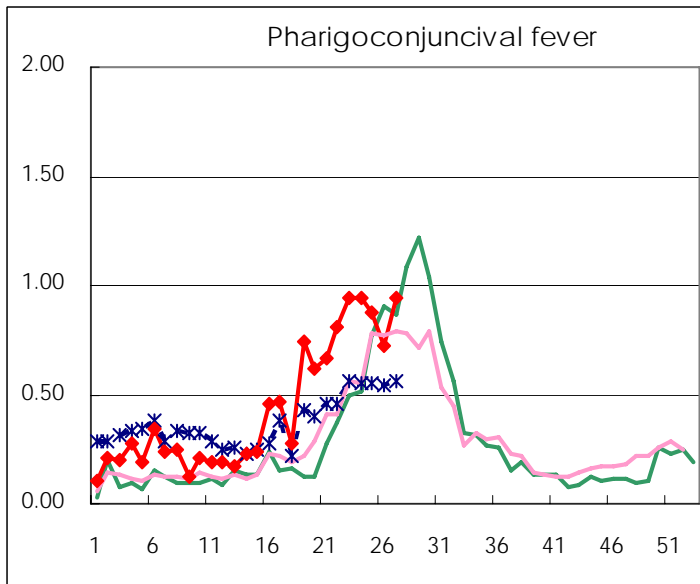
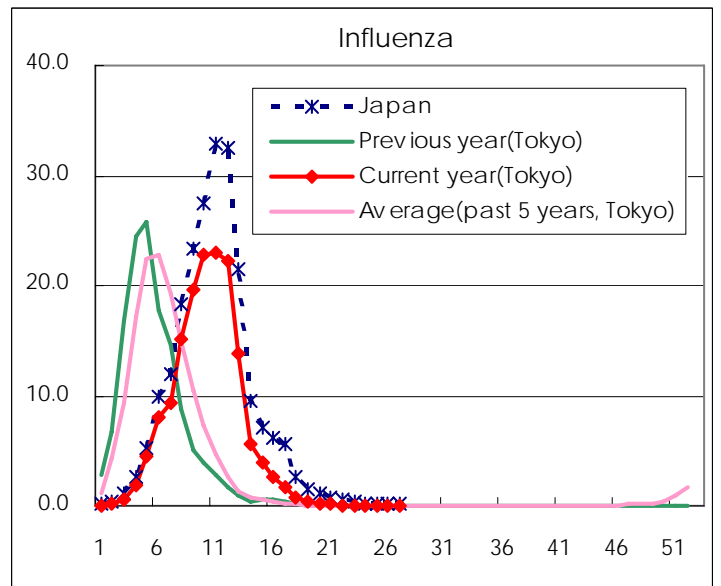
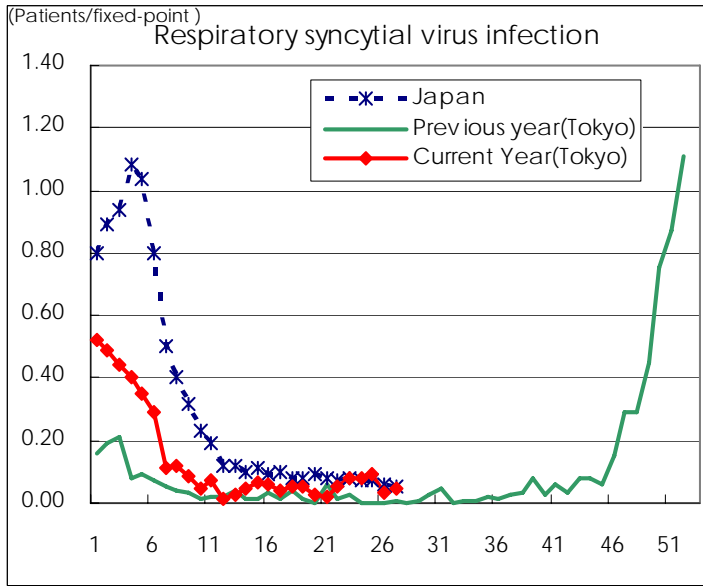
Category	Diseases	Tokyo				Cum 2007	Japan	
		24th	25th	26th	27th		27th	Cum 2007
V	Amebiasis	4	6	3	7	87	7	393
	Viral hepatitis(excluding hepatitis A and E)				2	18	5	104
	Acute encephalitis(excluding JE and WNE)	1	1			7	1	123
	Cryptosporidiosis							4
	Creutzfeldt-Jakob disease	1				7	2	83
	Severe invasive streptococcal infections(TSLS)					3		53
	Acquired immunodeficiency syndrome (AIDS)	8	10	8	8	248	13	714
	Giardiasis			1	2	10	3	25
	Meningococcal meningitis					1		11
	Congenital rubella syndrome							
	Syphilis	2	3	3	4	68	15	313
	Tetanus			1		1	2	42
	Vancomycin-resistant S. aureus infection							
	Vancomycin-resistant Enterococcus infection	1				8		37
designated	Influenza (H5N1)							

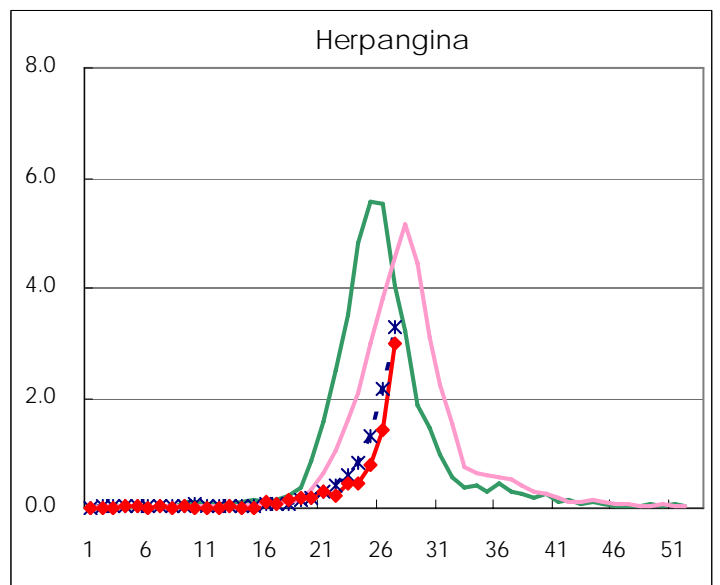
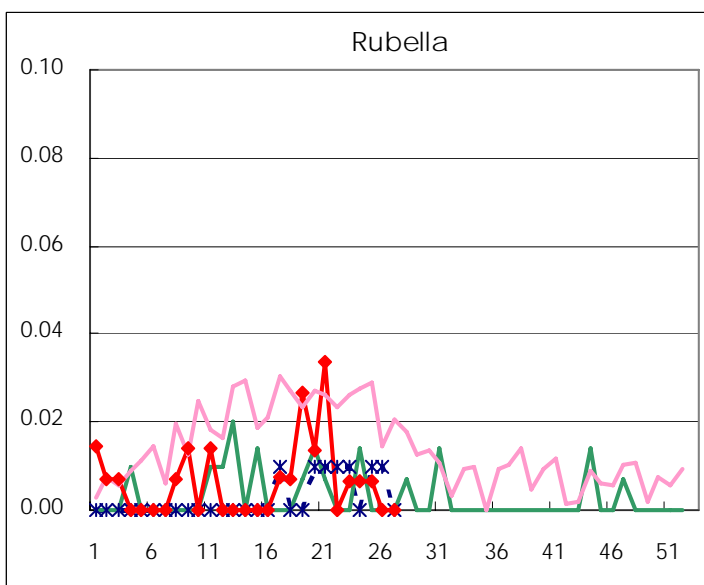
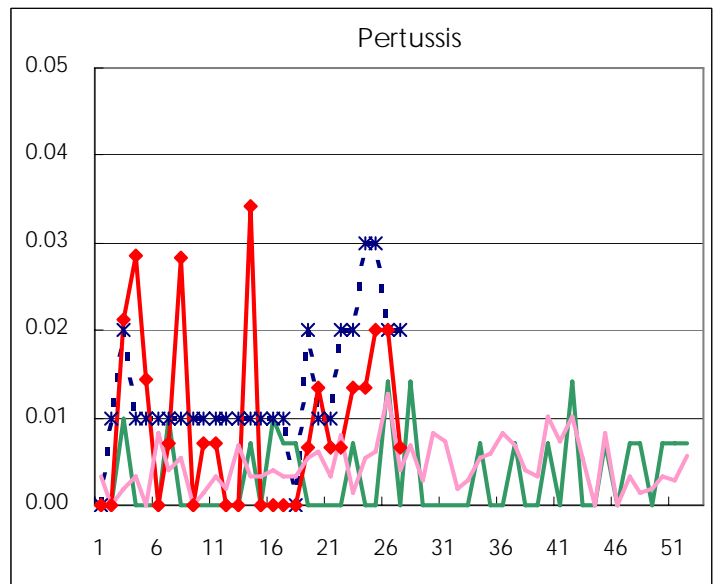
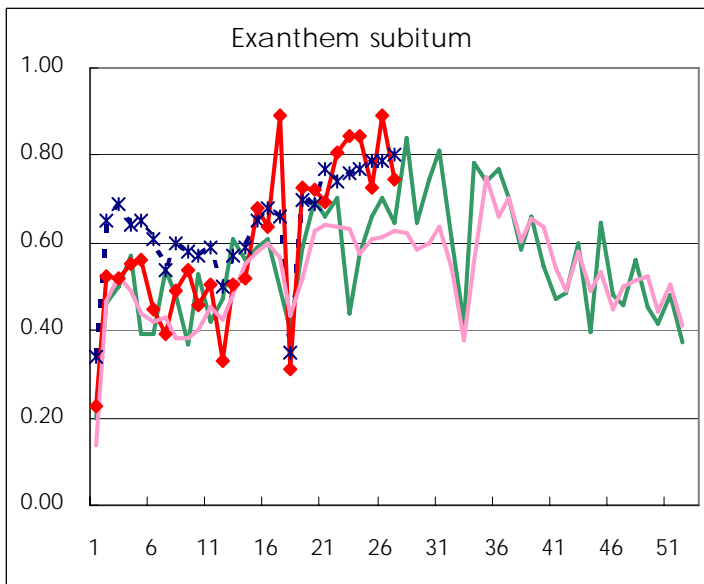
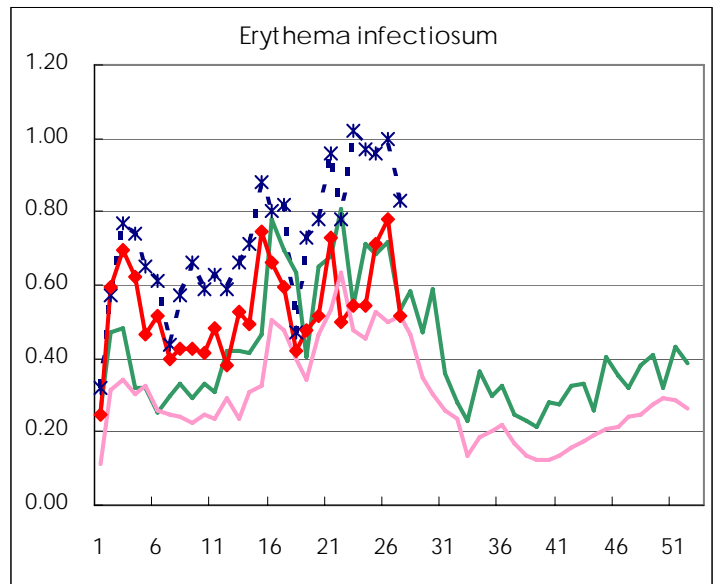
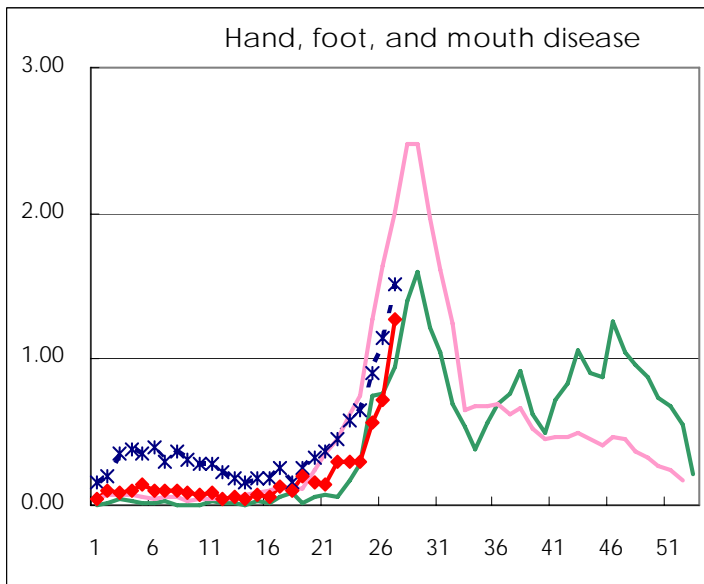
Number of patients with the diseases to be reported
by the designated clinics and hospitals

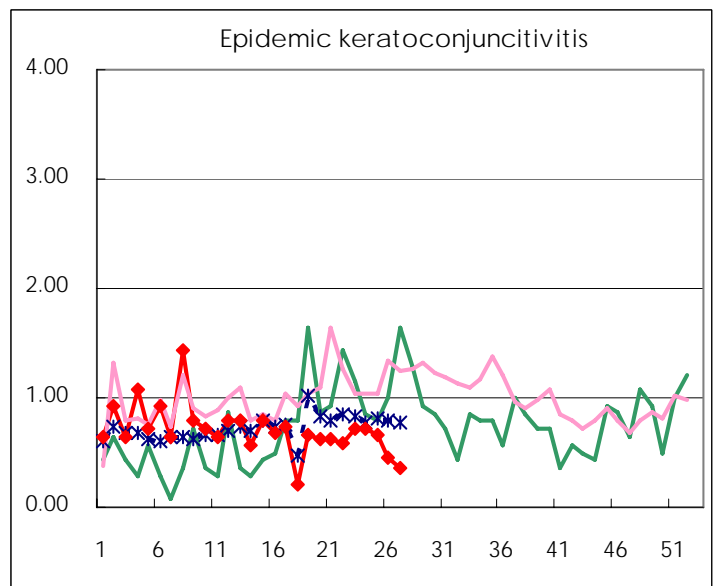
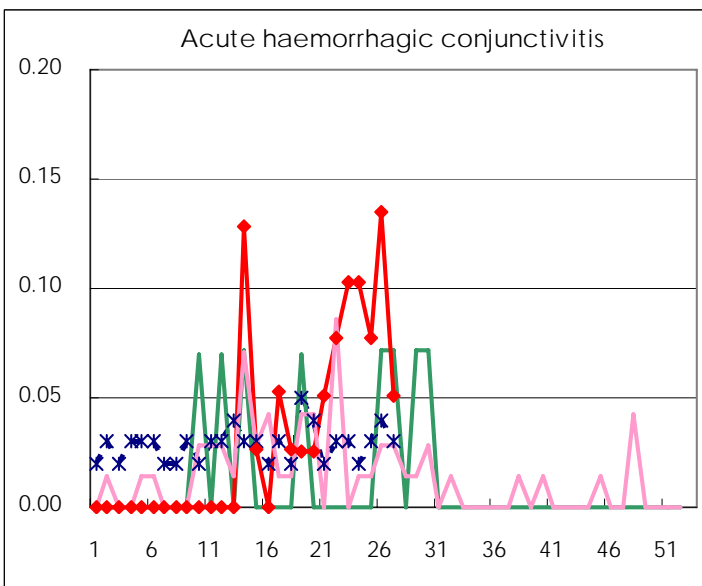
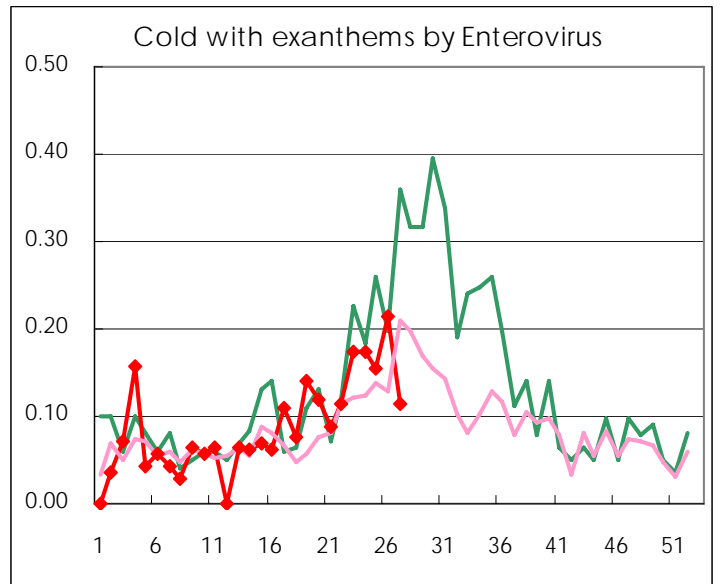
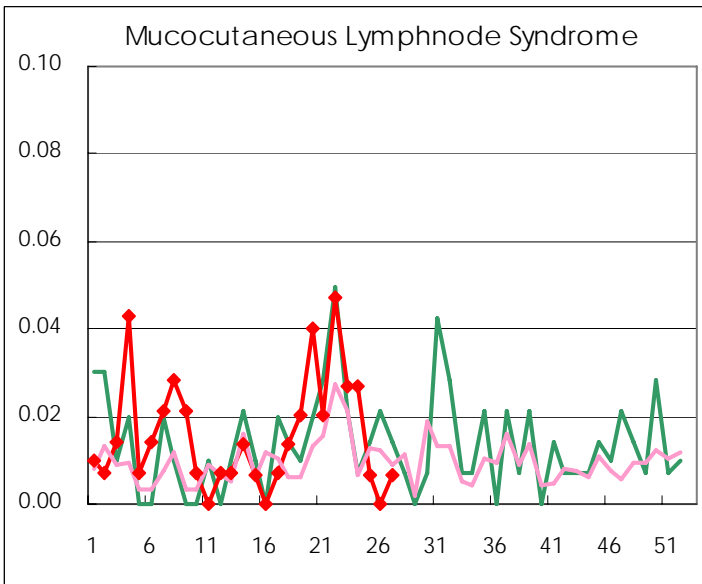
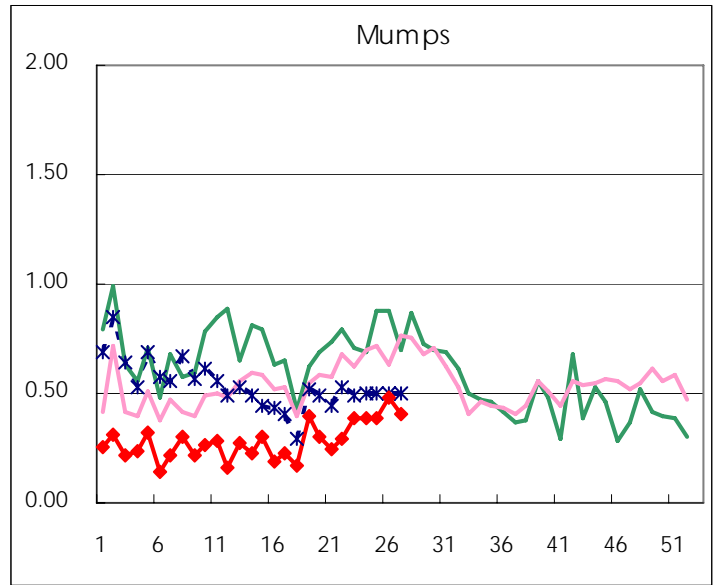
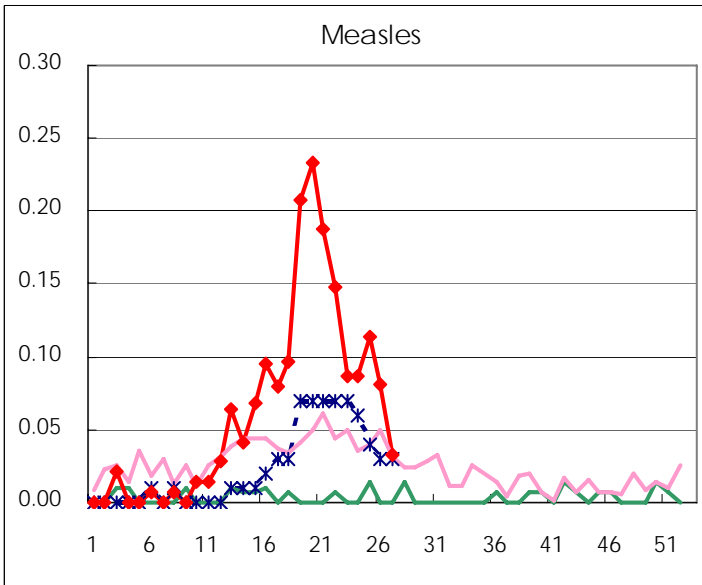
Diseases	2007				4wks total	Cum 2007
	24th	25th	26th	27th		
Respiratory syncytial virus infection	5	14	5	7	31	521
Influenza	4	3	3	6	16	43774
Pharyngoconjunctival fever	148	131	108	142	529	1715
Group A streptococcal pharyngitis	376	272	288	269	1,205	7323
Infectious gastroenteritis	980	845	714	674	3,213	21799
Chickenpox	312	209	213	158	892	6062
Hand, foot, and mouth disease	52	84	107	190	433	804
Erythema infectiosum	100	106	116	77	399	2107
Exanthem subitum	111	108	133	112	464	2329
Pertussis		3	3	1	7	31
Rubella	1	1			2	25
Herpangina	70	117	212	446	845	1129
Measles	17	17	12	5	51	259
Mumps	59	57	72	61	249	1105
Cold with exanthems by Enterovirus	18	23	32	17	90	335
Mucocutaneous Lymphnode Syndrome	2	1		1	4	60
Acute hemorrhagic conjunctivitis	2	3	5	2	12	32
Epidemic keratoconjunctivitis	24	26	17	14	81	469
Bacterial meningitis		1	4	1	6	18
Aseptic meningitis	1	1	2		4	15
Mycoplasma pneumonia	2	3	1	4	10	87
Chlamydial pneumonia (excluding psittacosis)			1		1	5
Measles in adults	17	16	10	10	53	219

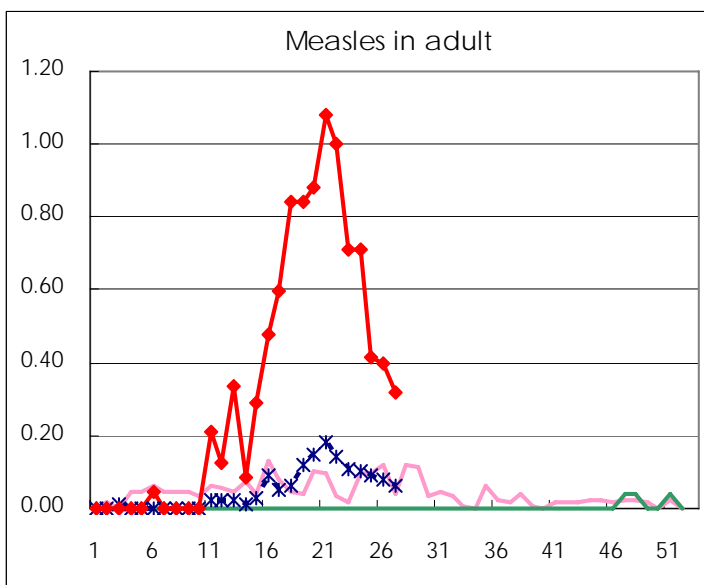
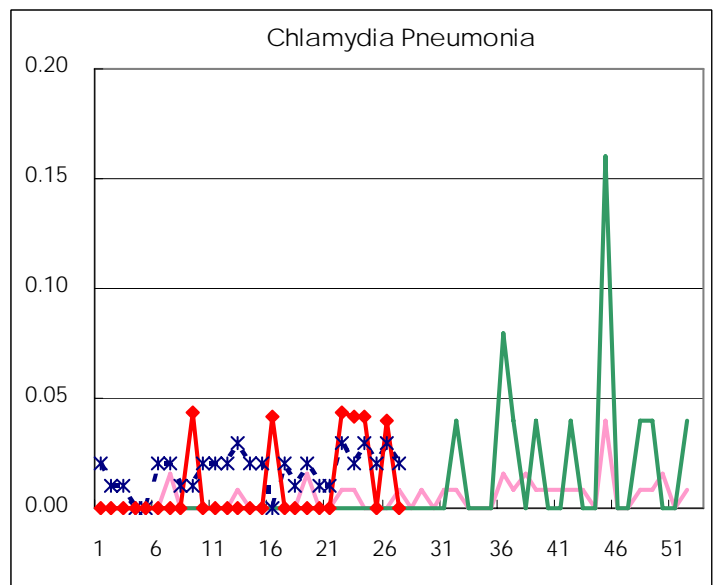
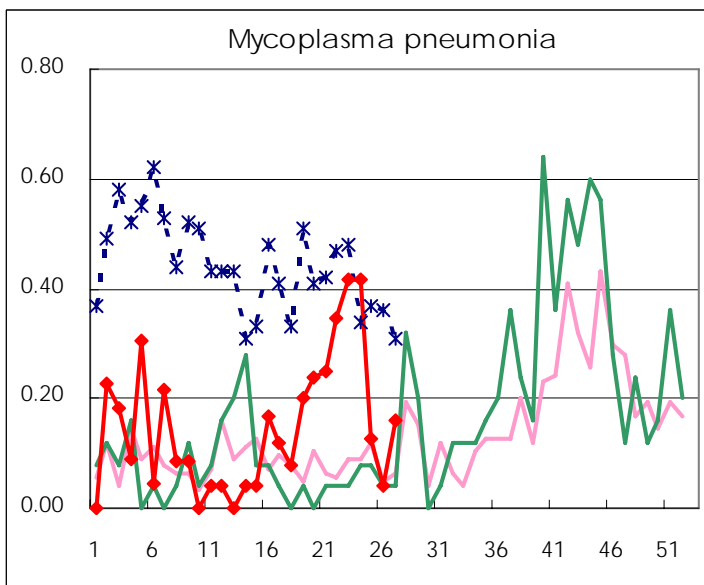
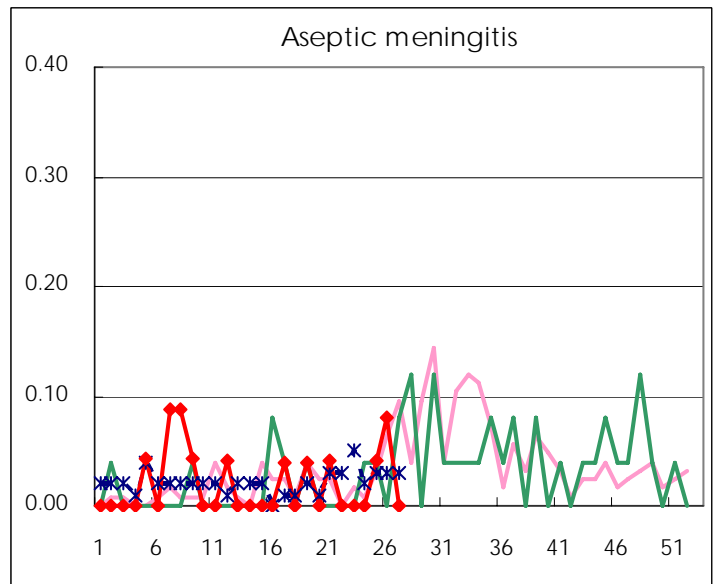
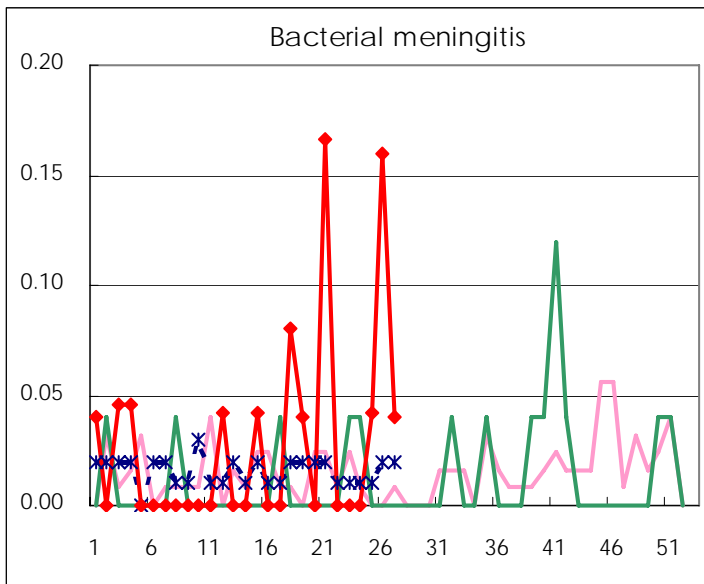
(Blank means 0.)

Disease Trend Graph (weekly reported cases per fixed-point in comparison)









Number of sentinel facilities for weekly reporting		
Types of sentinels	Number of sentinels	Sentinels having reported
Pediatric	150	150
Influenza	290	287
Ophthalmic	39	39
Specially-designated	25	25

Tokyo Metropolitan Government
Infectious Disease Surveillance Center