
INFECTIOUS DISEASES WEEKLY REPORT

TOKYO IDWR

Tokyo Metropolitan Infectious Disease Surveillance Center

19 July 2007 / Number 28

Surveillance System in Tokyo, Japan

The infectious diseases which all physicians must report

All physicians must report to health centers the incidence of the diseases which are shown at page one. Health centers electronically report the individual cases to Tokyo Metropolitan Infectious Disease Surveillance Center.

The infectious diseases required to be reported by the sentinels

The numbers of patients who visit the sentinel clinics or hospitals during a week are reported to health centers in Tokyo. And they electronically report the numbers to Tokyo Metropolitan Infectious Disease Surveillance Center. We have about 400 sentinel clinics and hospitals in Tokyo.

1st Week is early January and 52nd Week is end of December.

Tokyo Metropolitan Institute of Public Health
Epidemiological Information Office

TEL:81-3-3363-3213 FAX:81-3-5332-7365

e-mail:idsc@tokyo-eiken.go.jp

URL:idsc.tokyo-eiken.go.jp/

Number of patients with the diseases which all physicians must report

Category	Diseases	Tokyo				Japan		
		25th	26th	27th	28th	Cum 2007	28th	Cum 2007
I	Ebola hemorrhagic fever							
	Crimean-Congo hemorrhagic fever							
	Smallpox							
	South American hemorrhagic fever							
	Plague							
	Marburg disease							
	Lassa fever							
II	Acute poliomyelitis							
	Tuberculosis	94	68	48	53	1010	261	5429
	Diphtheria							
	Severe Acute Respiratory Syndrome(SARS)							
III	Cholera					2		8
	Shigellosis	2	1	1	6	44	8	263
	Enterohemorrhagic Escherichia coli infection	13	10	20	21	268	165	1376
	Typhoid fever					4	1	18
	Paratyphoid fever					3		8
IV	Hepatitis E				1	2		31
	West Nile fever							
	Hepatitis A					14	3	92
	Echinococcosis				1	3		9
	Yellow fever							
	Psittacosis					1		19
	Omsk hemorrhagic fever							
	Relapsing fever							
	Kyasanur forest disease							
	Q fever							3
	Rabies							
	Coccidioidomycosis					1		2
	Monkeypox							
	Hemorrhagic fever with renal syndrome							
	Western equine encephalitis							
	Tick-borne encephalitis							
	Anthrax							
	Scrub typhus(Tsutsugamushi disease)					2	1	90
	Dengue fever	1	1	1		6	4	35
	Eastern equine encephalitis							
	Avian influenza virus infection							
	Nipah virus infection							
	Japanese spotted fever						3	18
	Japanese encephalitis							1
	Epidemic typhus							
	Hantavirus pulmonary syndrome							
	Herpes B virus infection							
	Glanders							
	Brucellosis							1
	Venezuelan equine encephalitis							
	Hendra virus infection							
	Botulism							2
	Malaria		1	1		13	1	25
Tularemia								
Lyme disease							2	
Lyssavirus infection(excluding rabies)								
Rift valley fever								
Melioidosis								
Legionellosis	3	1	2	2	20	12	273	
Leptospirosis					2		3	
Rocky mountain spotted fever								

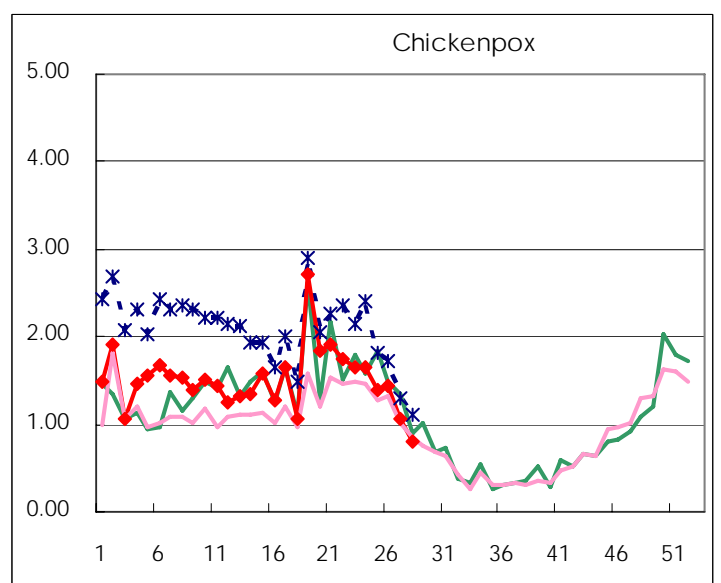
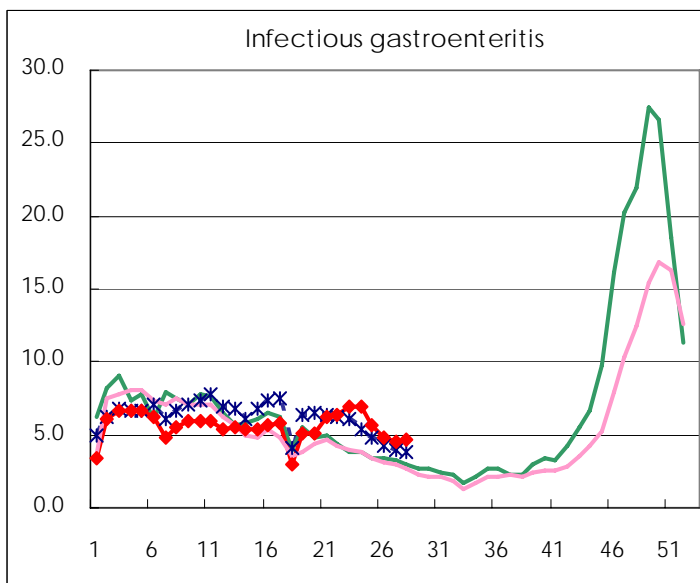
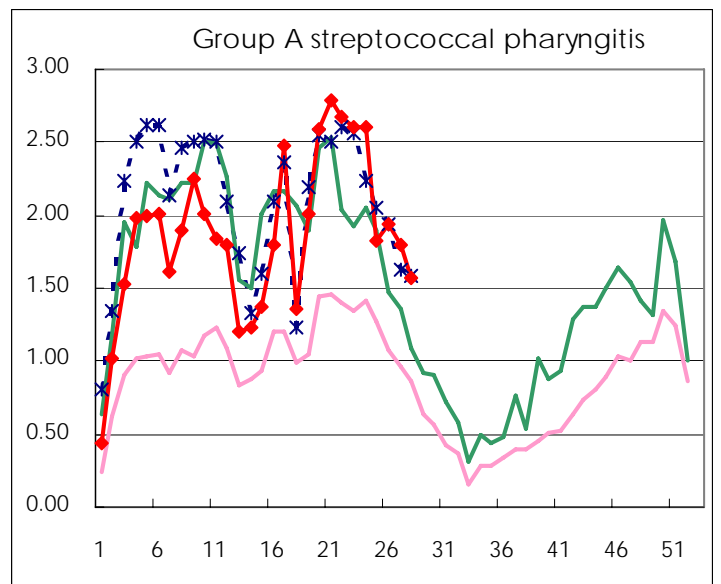
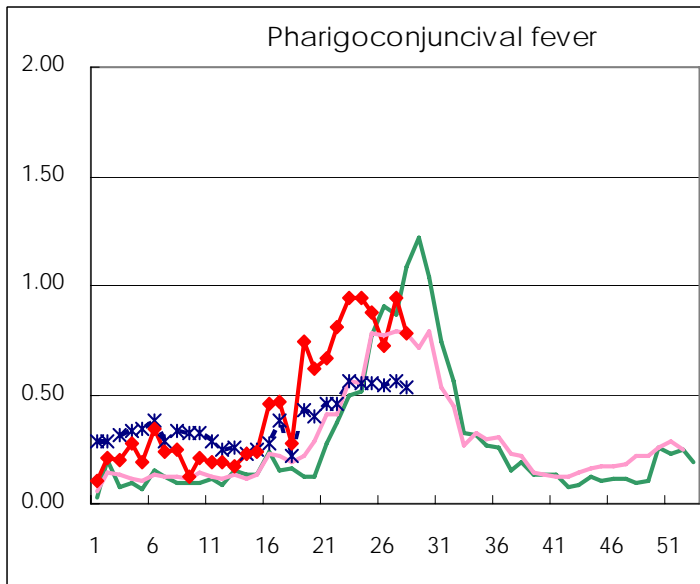
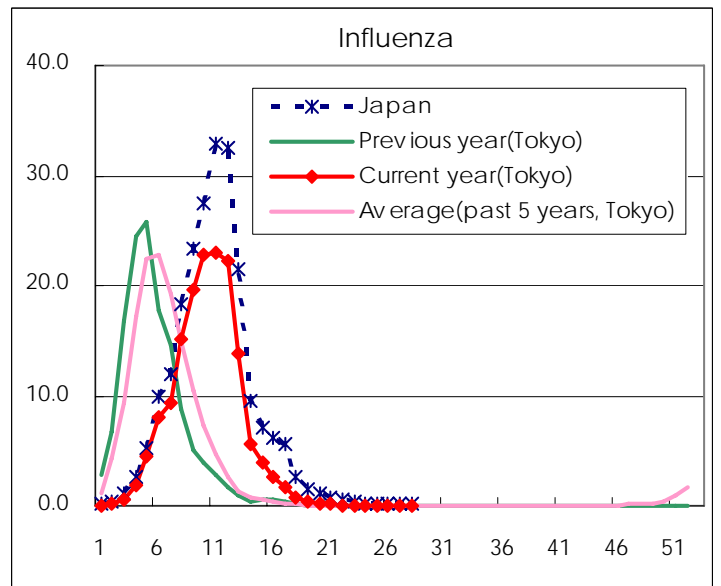
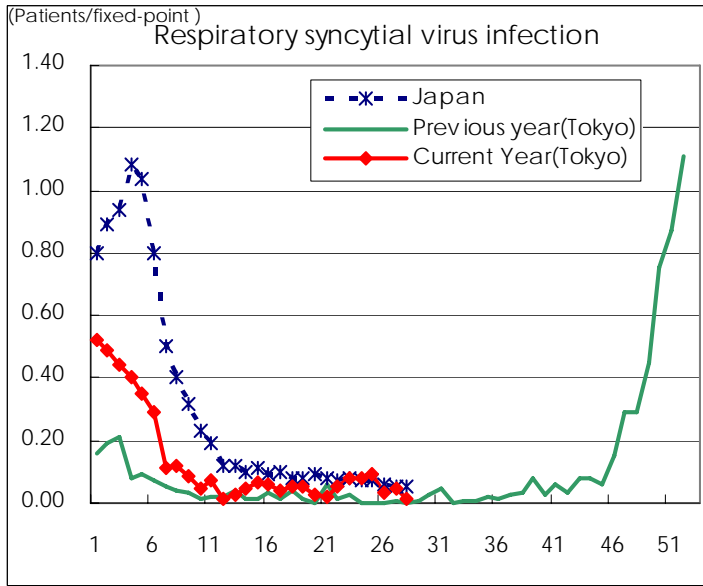
Category	Diseases	Tokyo				Cum 2007	Japan	
		25th	26th	27th	28th		28th	Cum 2007
V	Amebiasis	6	3	7	3	90	8	408
	Viral hepatitis(excluding hepatitis A and E)			2	2	20	5	112
	Acute encephalitis(excluding JE and WNE)	1			1	8	3	129
	Cryptosporidiosis							4
	Creutzfeldt-Jakob disease					7	2	86
	Severe invasive streptococcal infections(TSLS)					3		56
	Acquired immunodeficiency syndrome (AIDS)	10	8	11	20	271	18	742
	Giardiasis		1	2		10		25
	Meningococcal meningitis					1		11
	Congenital rubella syndrome							
	Syphilis	3	3	4	3	71	13	333
	Tetanus		1			1		44
	Vancomycin-resistant S. aureus infection							
	Vancomycin-resistant Enterococcus infection					8		37
designated	Influenza (H5N1)							

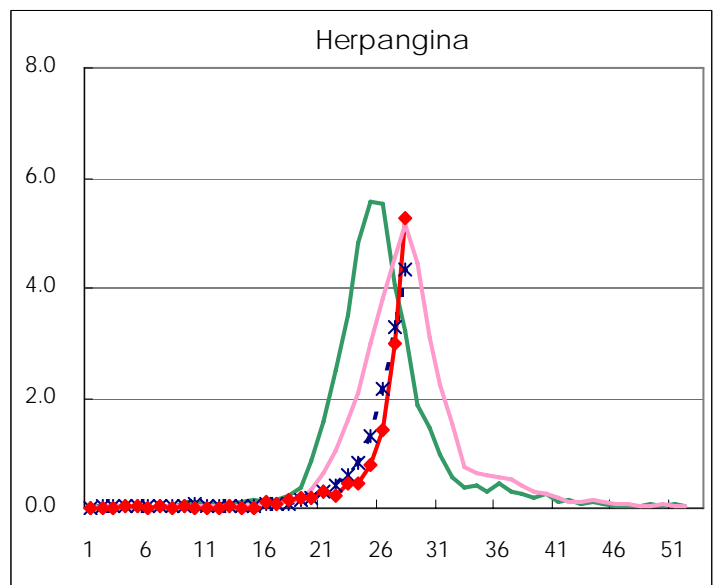
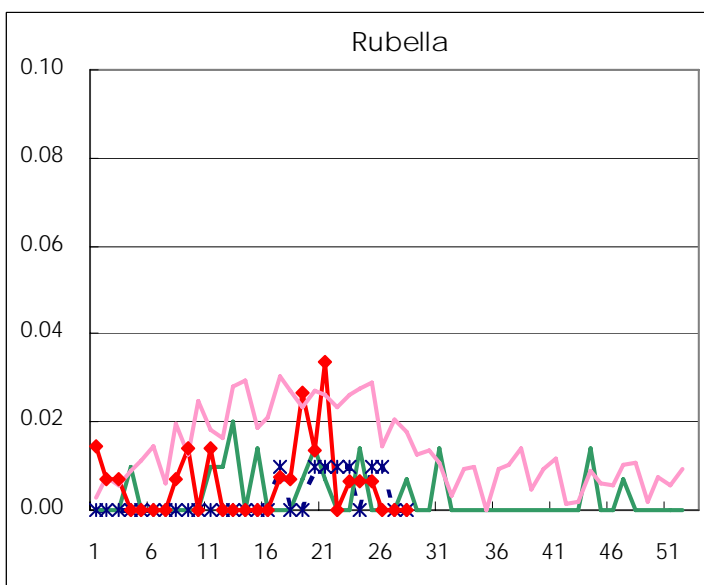
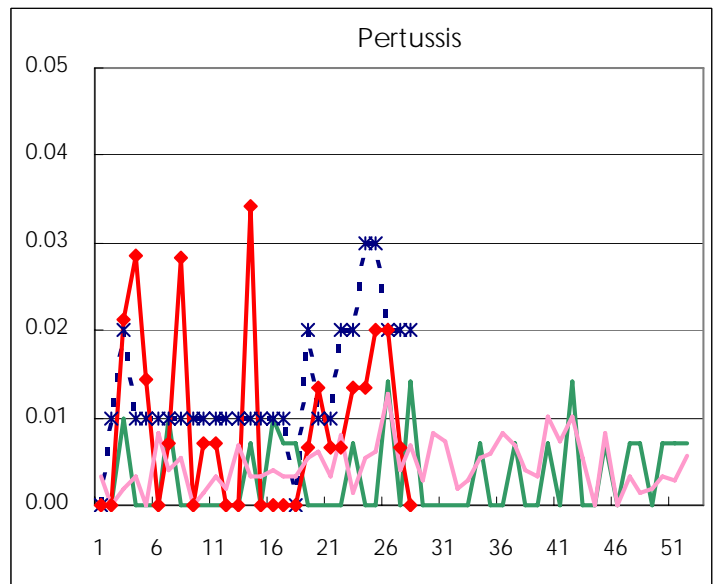
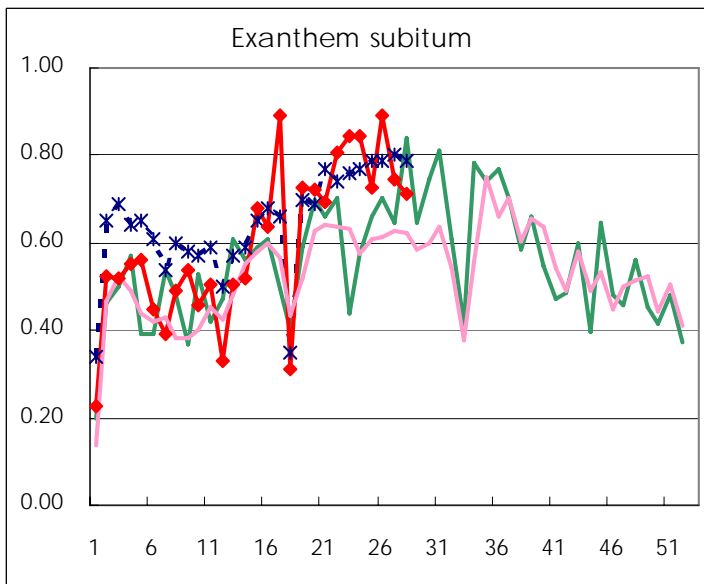
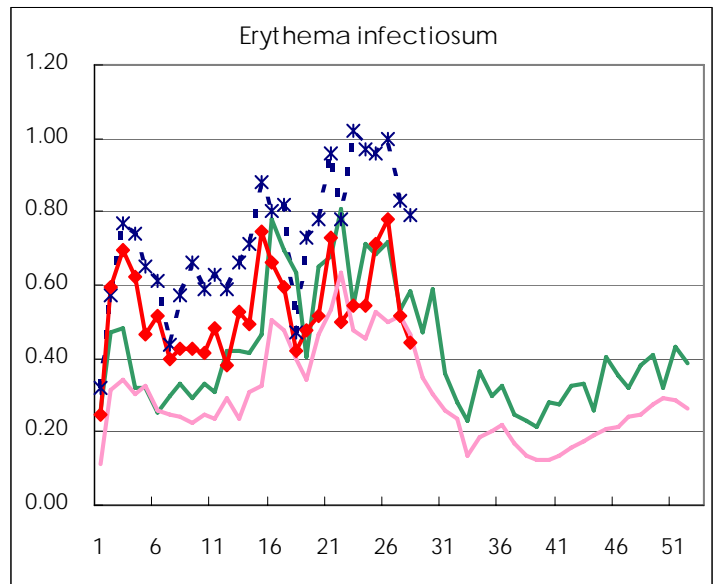
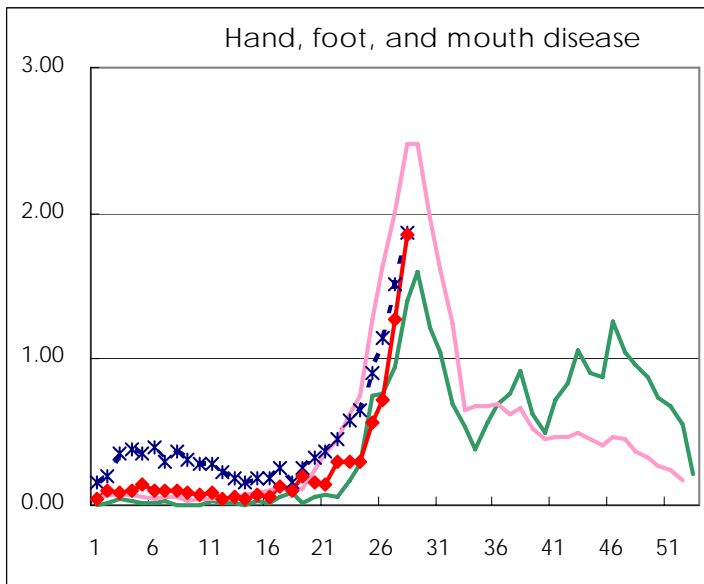
Number of patients with the diseases to be reported
by the designated clinics and hospitals

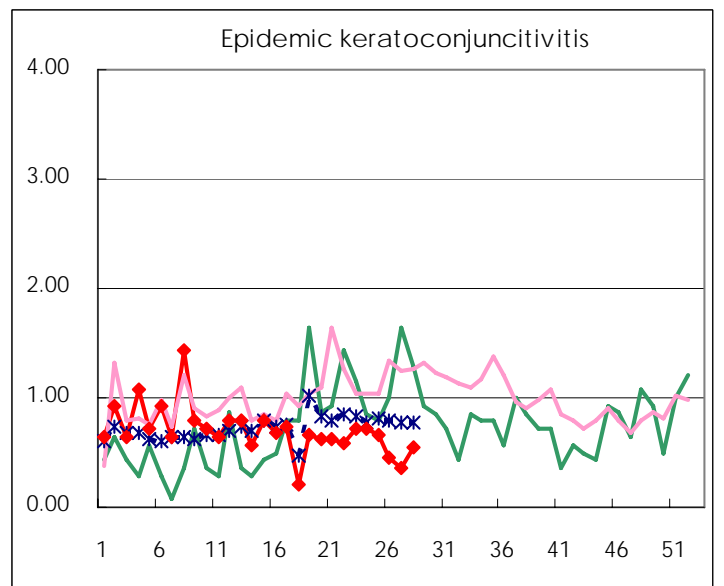
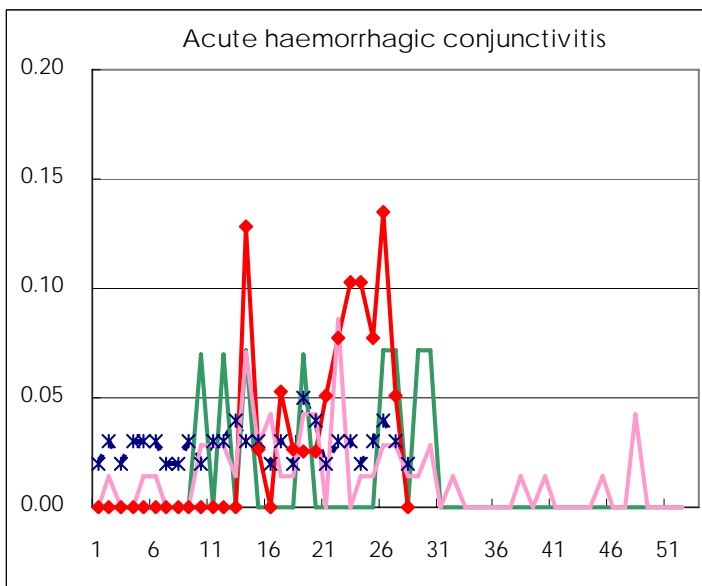
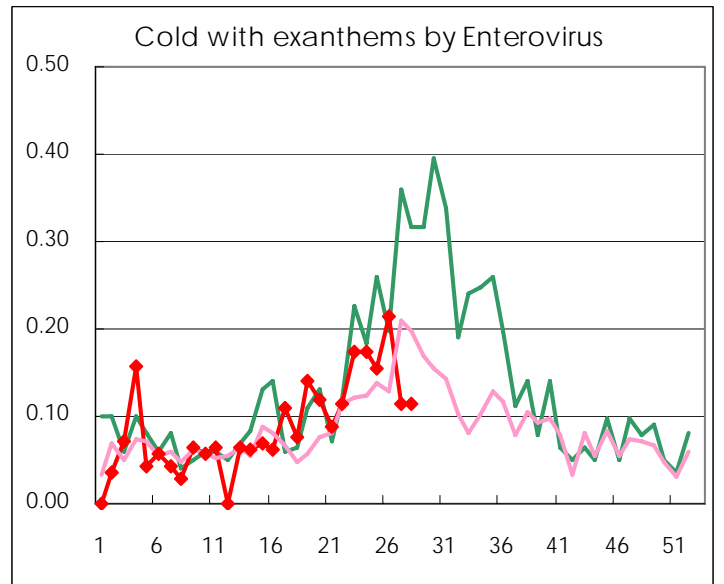
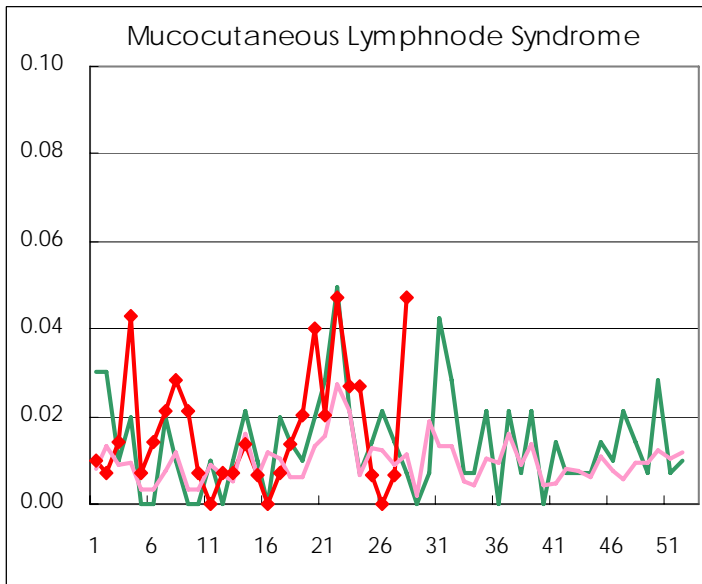
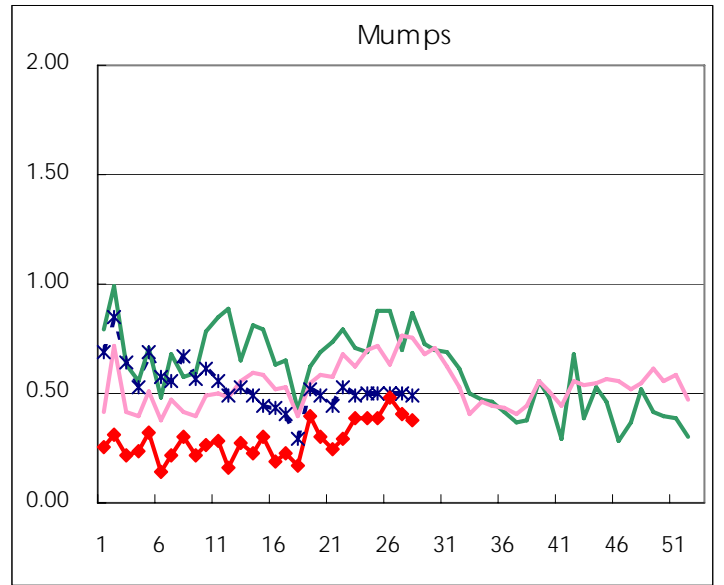
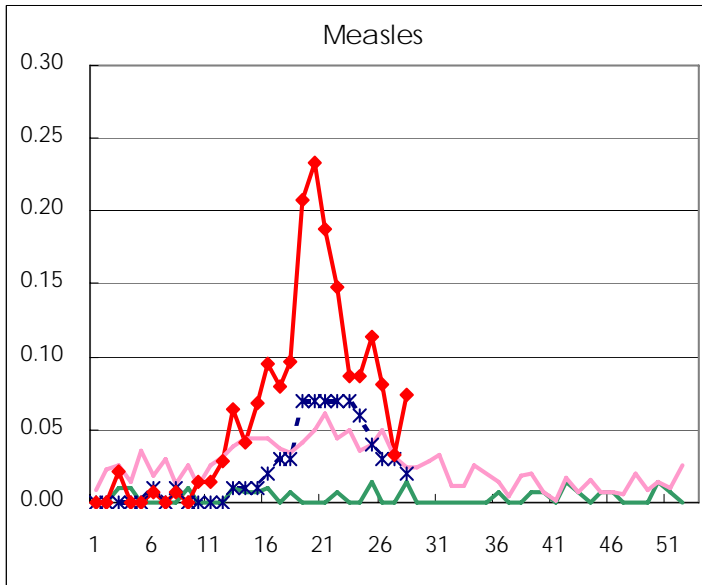
Diseases	2007				4wks total	Cum 2007
	25th	26th	27th	28th		
Respiratory syncytial virus infection	14	5	7	2	28	523
Influenza	3	3	6	3	15	43777
Pharyngoconjunctival fever	131	108	142	116	497	1831
Group A streptococcal pharyngitis	272	288	269	235	1,064	7558
Infectious gastroenteritis	845	714	674	691	2,924	22490
Chickenpox	209	213	158	120	700	6182
Hand, foot, and mouth disease	84	107	190	276	657	1080
Erythema infectiosum	106	116	77	66	365	2173
Exanthem subitum	108	133	112	106	459	2435
Pertussis	3	3	1		7	31
Rubella	1				1	25
Herpangina	117	212	446	785	1,560	1914
Measles	17	12	5	11	45	270
Mumps	57	72	61	56	246	1161
Cold with exanthems by Enterovirus	23	32	17	17	89	352
Mucocutaneous Lymphnode Syndrome	1		1	7	9	67
Acute hemorrhagic conjunctivitis	3	5	2		10	32
Epidemic keratoconjunctivitis	26	17	14	21	78	490
Bacterial meningitis	1	4	1		6	18
Aseptic meningitis	1	2		1	4	16
Mycoplasma pneumonia	3	1	4	7	15	94
Chlamydial pneumonia (excluding psittacosis)		1			1	5
Measles in adults	10	10	8	4	32	231

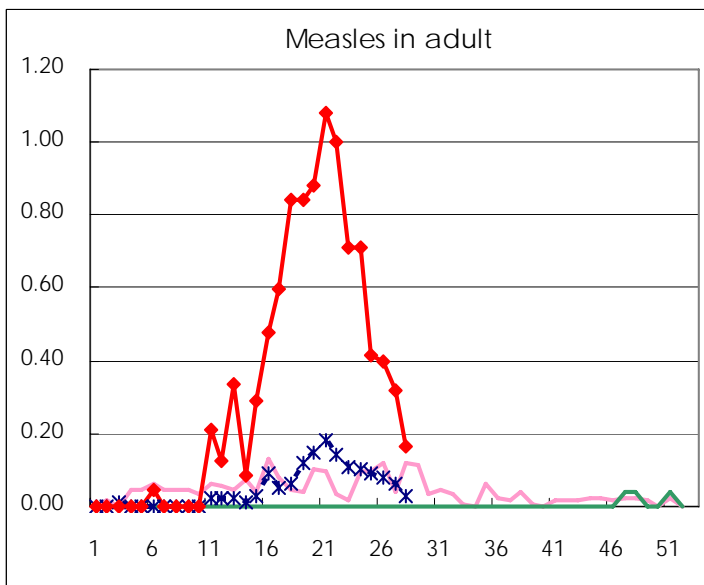
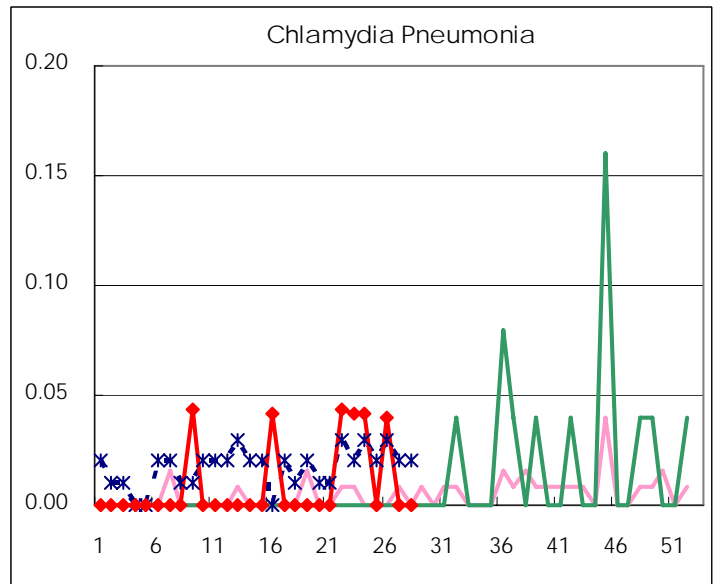
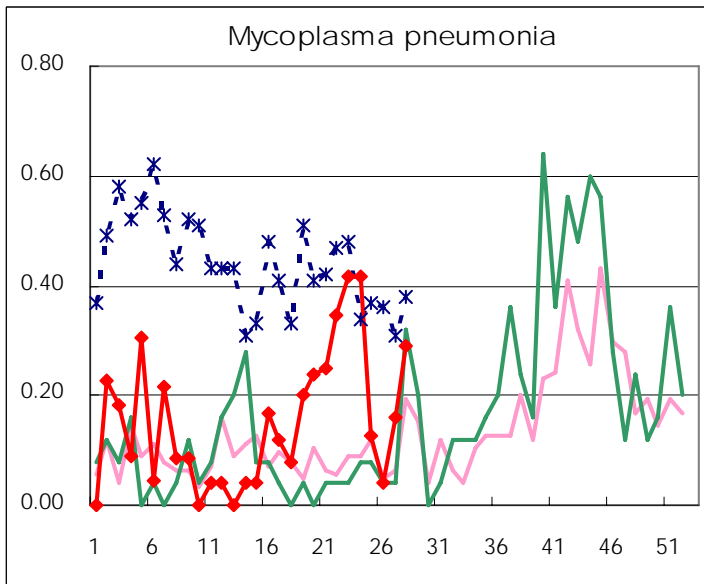
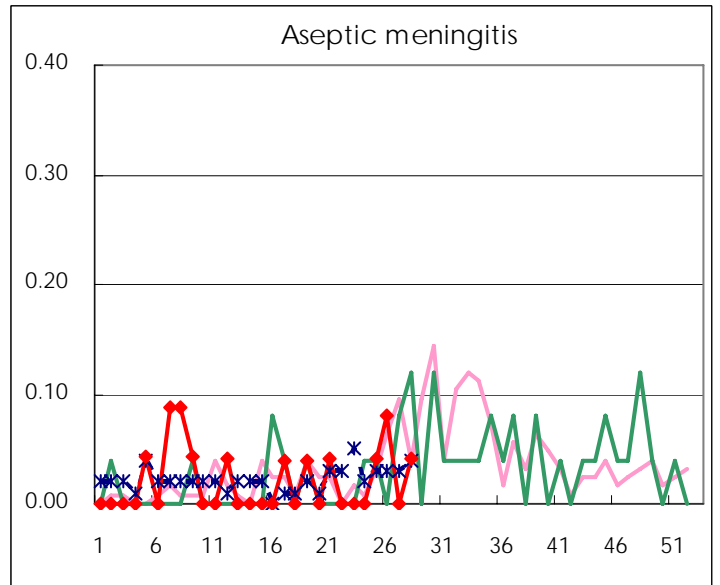
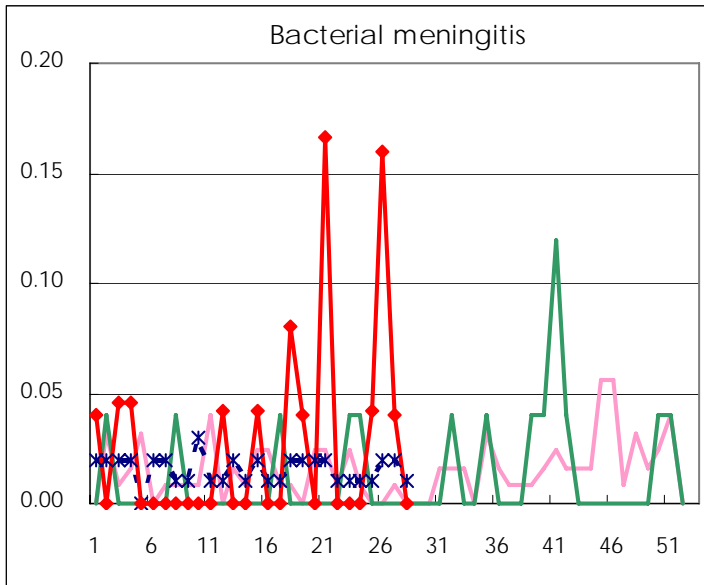
(Blank means 0.)

Disease Trend Graph (weekly reported cases per fixed-point in comparison)









Number of sentinel facilities for weekly reporting		
Types of sentinels	Number of sentinels	Sentinels having reported
Pediatric	150	149
Influenza	290	285
Ophthalmic	39	38
Specially-designated	25	24

Tokyo Metropolitan Government
Infectious Disease Surveillance Center