

---

INFECTIOUS DISEASES WEEKLY REPORT

# TOKYO IDWR

Tokyo Metropolitan Infectious Disease Surveillance Center

## 26 July 2007 / Number 29

### Surveillance System in Tokyo, Japan

The infectious diseases which all physicians must report

All physicians must report to health centers the incidence of the diseases which are shown at page one. Health centers electronically report the individual cases to Tokyo Metropolitan Infectious Disease Surveillance Center.

The infectious diseases required to be reported by the sentinels

The numbers of patients who visit the sentinel clinics or hospitals during a week are reported to health centers in Tokyo. And they electronically report the numbers to Tokyo Metropolitan Infectious Disease Surveillance Center. We have about 400 sentinel clinics and hospitals in Tokyo.

1st Week is early January and 52nd Week is end of December.

Tokyo Metropolitan Institute of Public Health  
Epidemiological Information Office

TEL:81-3-3363-3213 FAX:81-3-5332-7365

e-mail: [idsc@tokyo-eiken.go.jp](mailto:idsc@tokyo-eiken.go.jp)

URL: [idsc.tokyo-eiken.go.jp/](http://idsc.tokyo-eiken.go.jp/)

---

## Number of patients with the diseases which all physicians must report

Category	Diseases	Tokyo				Japan		
		26th	27th	28th	29th	Cum 2007	29th	Cum 2007
I	Ebola hemorrhagic fever							
	Crimean-Congo hemorrhagic fever							
	Smallpox							
	South American hemorrhagic fever							
	Plague							
	Marburg disease							
	Lassa fever							
II	Acute poliomyelitis							
	Tuberculosis	69	53	73	50	1087	204	5834
	Diphtheria							
	Severe Acute Respiratory Syndrome(SARS)							
III	Cholera					2		9
	Shigellosis	1	1	7	1	46	11	277
	Enterohemorrhagic Escherichia coli infection	10	20	33	13	293	118	1538
	Typhoid fever					4		18
	Paratyphoid fever					3		8
IV	Hepatitis E			1		2		31
	West Nile fever							
	Hepatitis A					14		94
	Echinococcosis			1		3		9
	Yellow fever							
	Psittacosis					1		19
	Omsk hemorrhagic fever							
	Relapsing fever							
	Kyasanur forest disease							
	Q fever							3
	Rabies							
	Coccidioidomycosis					1		2
	Monkeypox							
	Hemorrhagic fever with renal syndrome							
	Western equine encephalitis							
	Tick-borne encephalitis							
	Anthrax							
	Scrub typhus(Tsutsugamushi disease)					2	1	92
	Dengue fever	1	1		1	7	2	37
	Eastern equine encephalitis							
	Avian influenza virus infection							
	Nipah virus infection							
	Japanese spotted fever						2	20
	Japanese encephalitis							1
	Epidemic typhus							
	Hantavirus pulmonary syndrome							
	Herpes B virus infection							
	Glanders							
	Brucellosis							1
	Venezuelan equine encephalitis							
	Hendra virus infection							
	Botulism							2
	Malaria	1	1			13	1	26
Tularemia								
Lyme disease							2	
Lyssavirus infection(excluding rabies)								
Rift valley fever								
Melioidosis								
Legionellosis	1	2	2	2	22	18	295	
Leptospirosis					2		3	
Rocky mountain spotted fever								

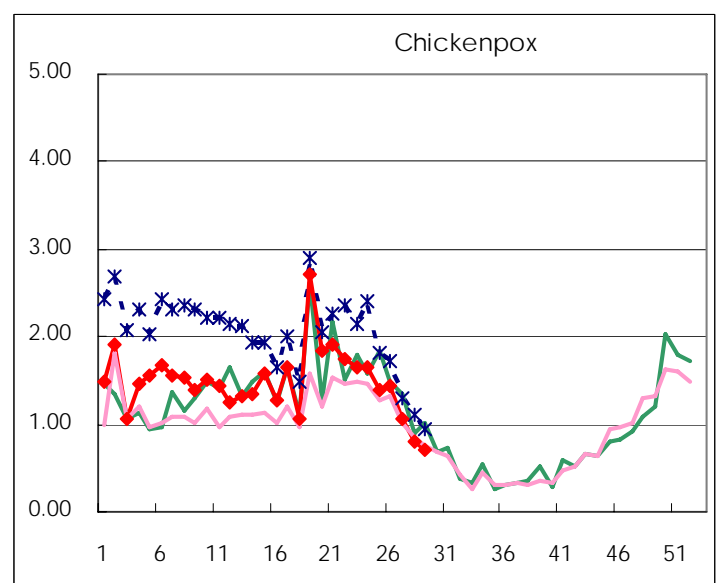
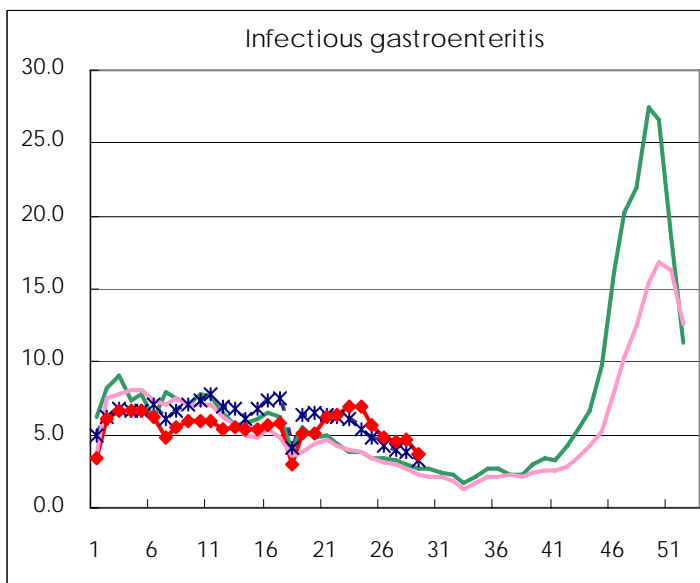
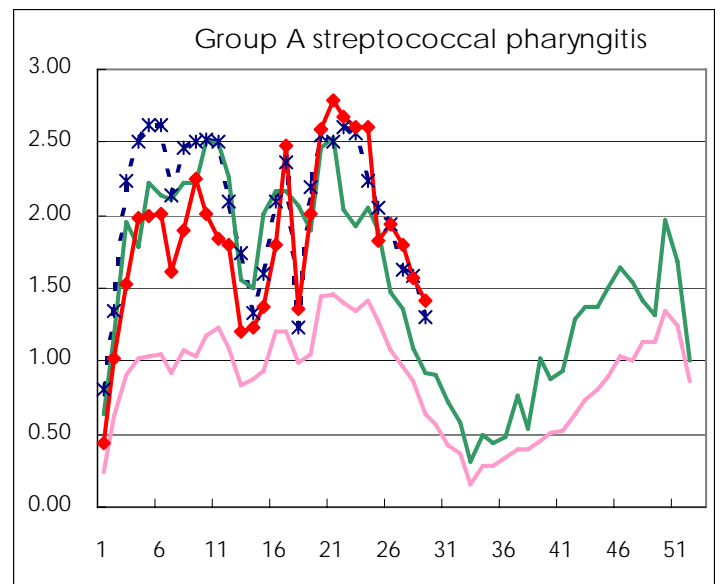
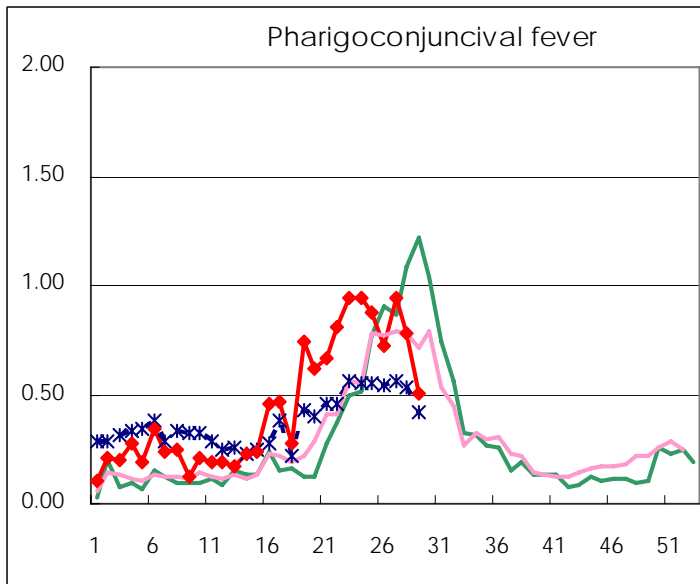
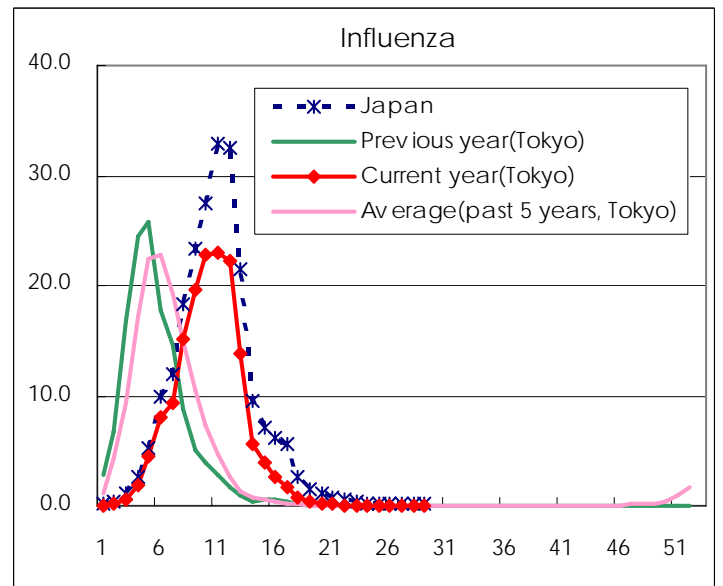
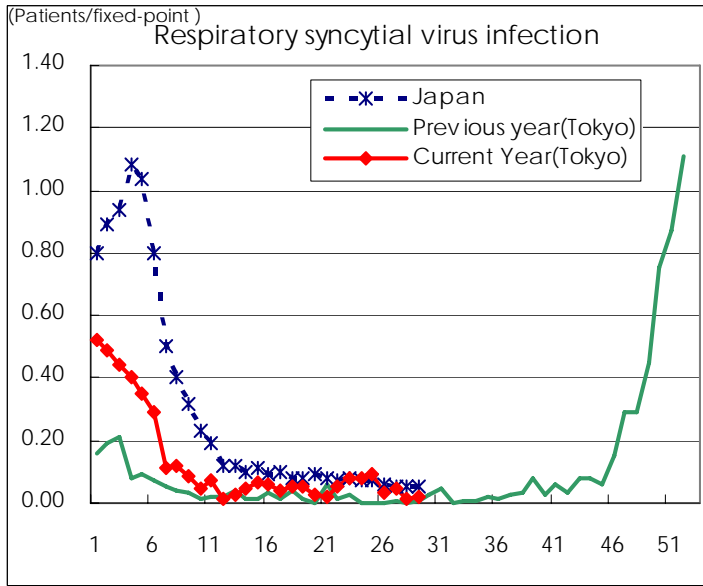
Category	Diseases	Tokyo				Japan		
		26th	27th	28th	29th	Cum 2007	29th	Cum 2007
V	Amebiasis	3	7	4	5	96	6	429
	Viral hepatitis(excluding hepatitis A and E)		2	3	2	23	3	124
	Acute encephalitis(excluding JE and WNE)			1		8	1	130
	Cryptosporidiosis							4
	Creutzfeldt-Jakob disease				1	8	2	89
	Severe invasive streptococcal infections(TSLS)					3		57
	Acquired immunodeficiency syndrome (AIDS)	8	11	22	5	278	14	778
	Giardiasis	1	2			10		27
	Meningococcal meningitis					1		11
	Congenital rubella syndrome							
	Syphilis	3	4	4	1	73	9	354
	Tetanus	1				1	1	50
	Vancomycin-resistant S. aureus infection							
	Vancomycin-resistant Enterococcus infection				1	9	2	40
designated	Influenza (H5N1)							

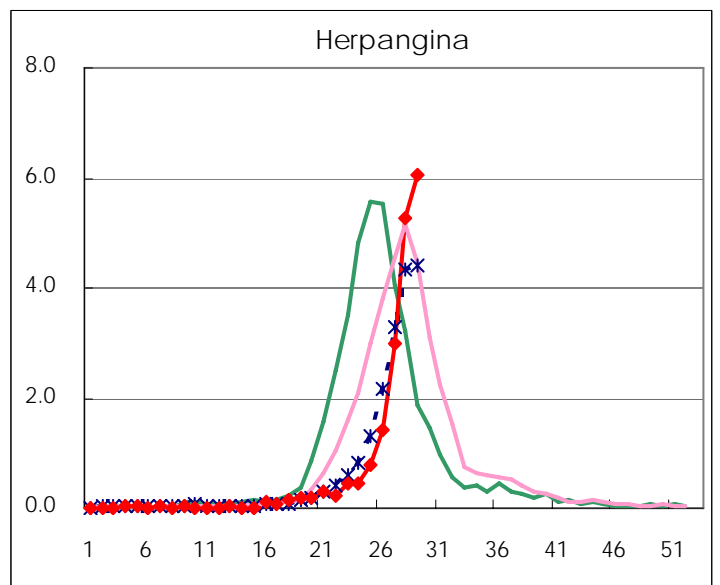
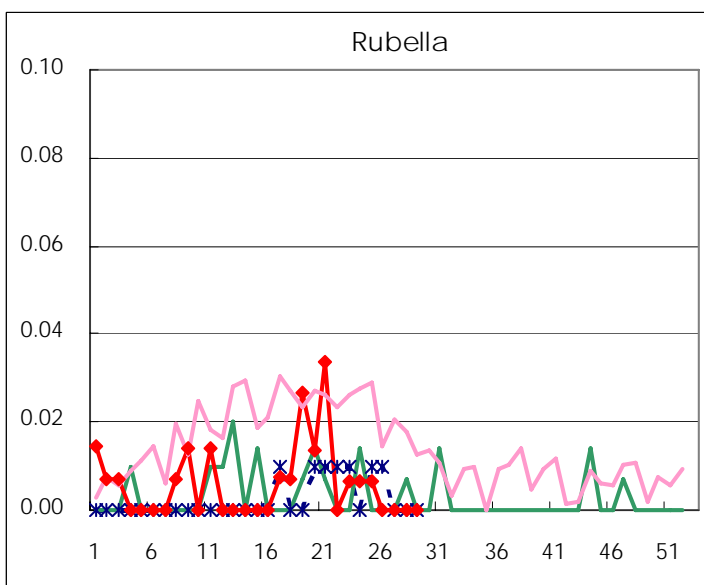
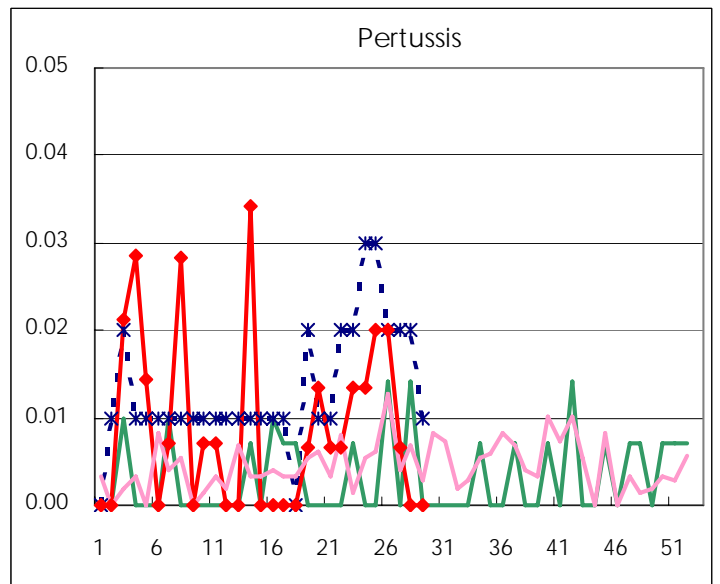
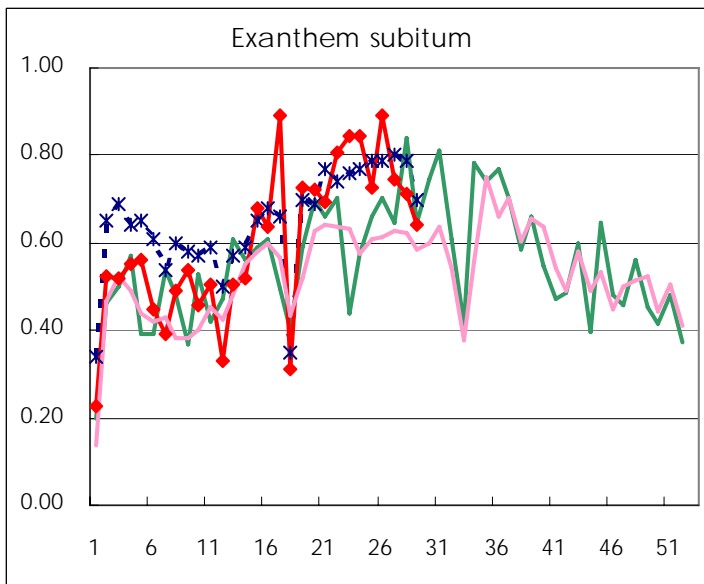
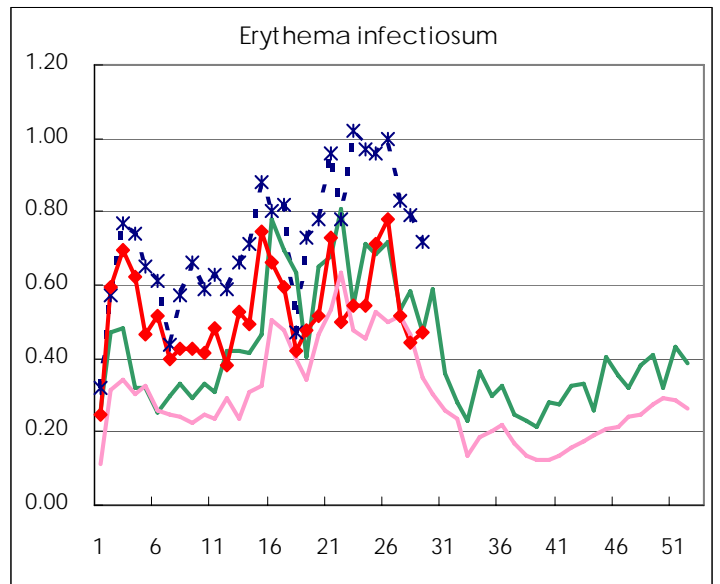
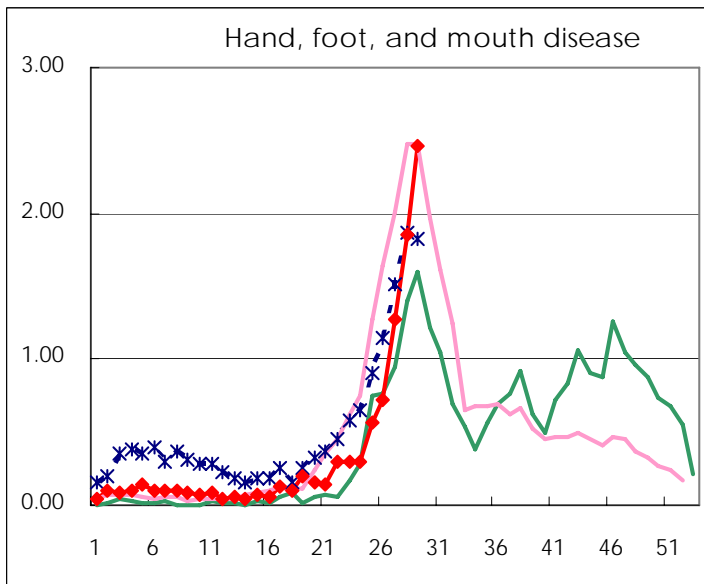
Number of patients with the diseases to be reported  
by the designated clinics and hospitals

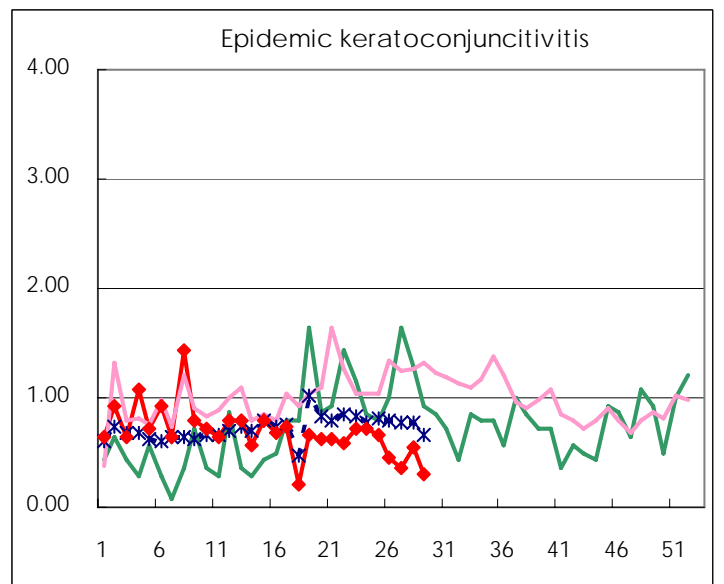
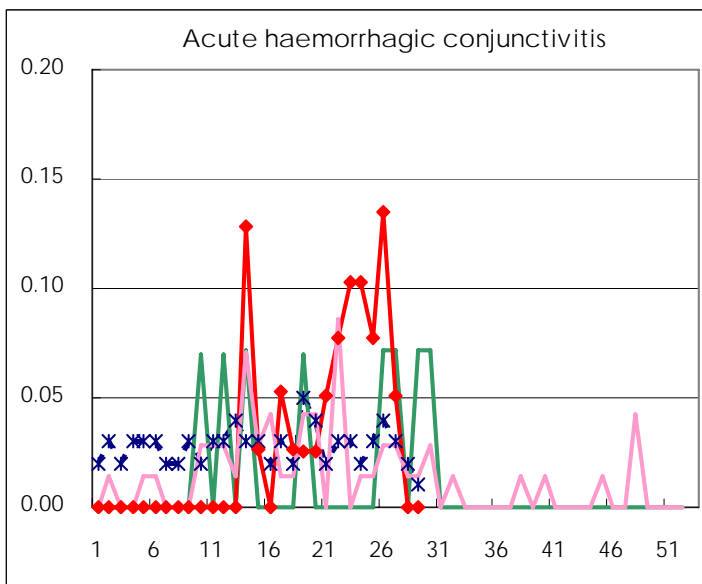
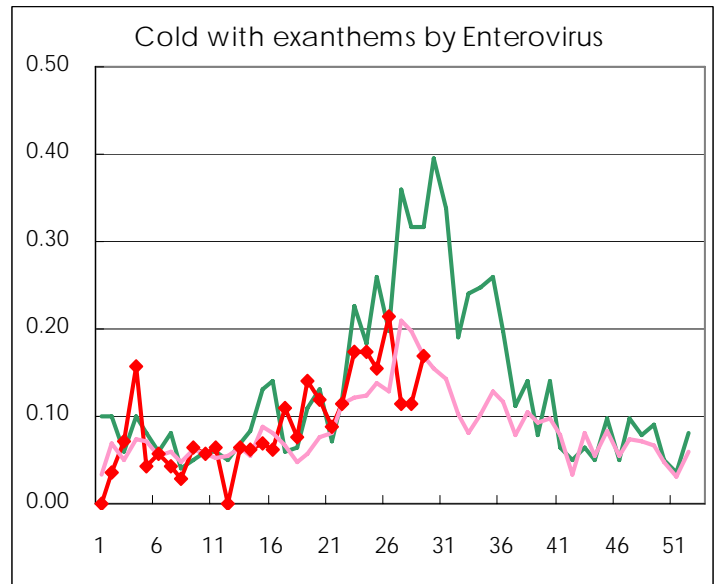
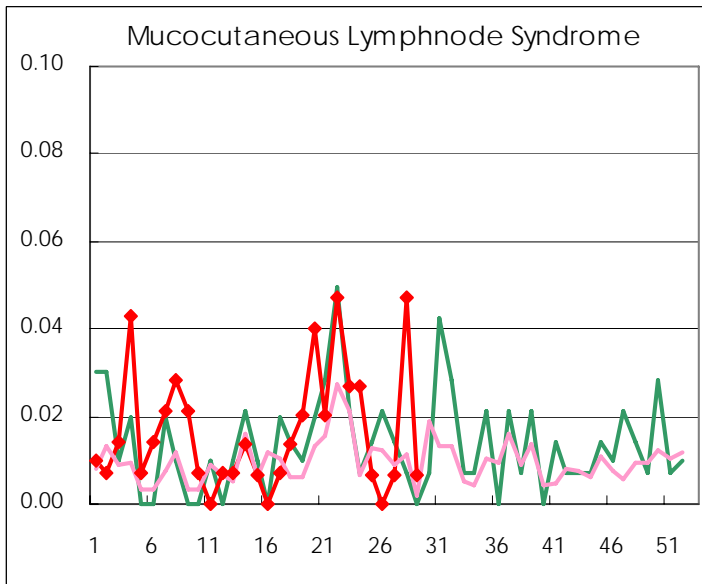
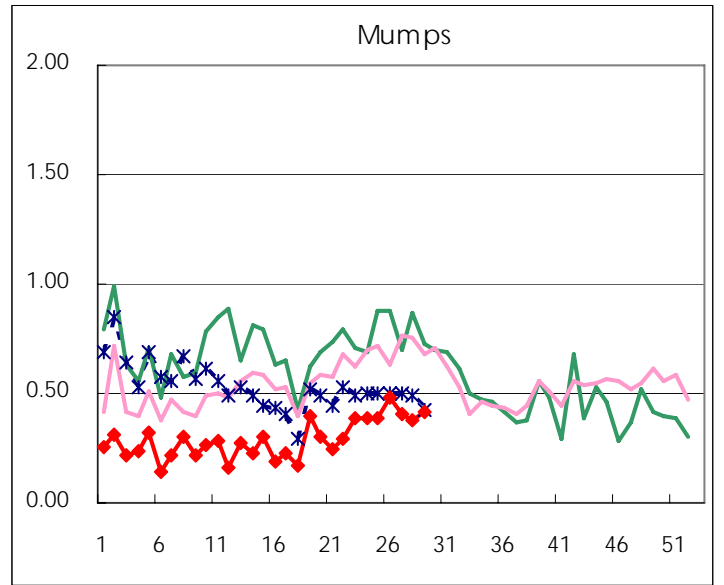
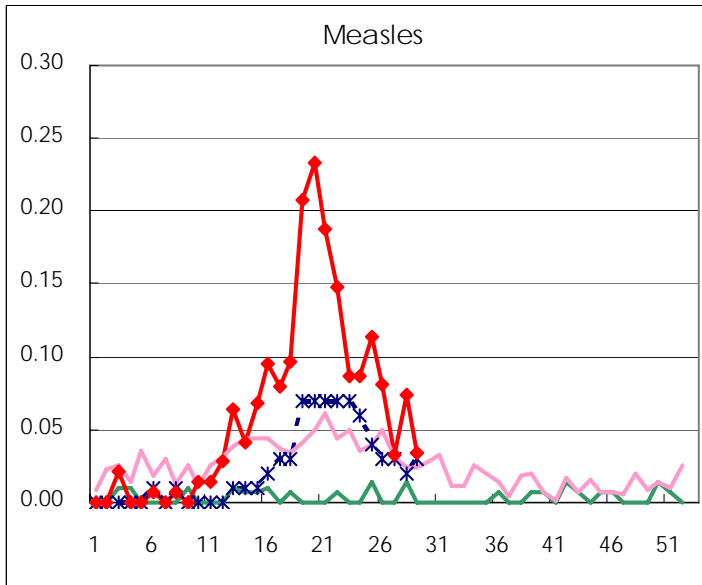
Diseases	2007				4wks total	Cum 2007
	26th	27th	28th	29th		
Respiratory syncytial virus infection	5	7	2	3	17	526
Influenza	3	6	3	4	16	43781
Pharyngoconjunctival fever	108	142	116	75	441	1906
Group A streptococcal pharyngitis	288	269	235	210	1,002	7768
Infectious gastroenteritis	714	674	691	551	2,630	23041
Chickenpox	213	158	120	104	595	6286
Hand, foot, and mouth disease	107	190	276	364	937	1444
Erythema infectiosum	116	77	66	70	329	2243
Exanthem subitum	133	112	106	95	446	2530
Pertussis	3	1			4	31
Rubella						25
Herpangina	212	446	785	894	2,337	2808
Measles	12	5	11	5	33	275
Mumps	72	61	56	61	250	1222
Cold with exanthems by Enterovirus	32	17	17	25	91	377
Mucocutaneous Lymphnode Syndrome		1	7	1	9	68
Acute hemorrhagic conjunctivitis	5	2			7	32
Epidemic keratoconjunctivitis	17	14	21	12	64	502
Bacterial meningitis	4	1			5	18
Aseptic meningitis	2		1	3	6	19
Mycoplasma pneumonia	1	4	7	2	14	96
Chlamydial pneumonia (excluding psittacosis)	1			2	3	7
Measles in adults	10	8	4	3	25	234

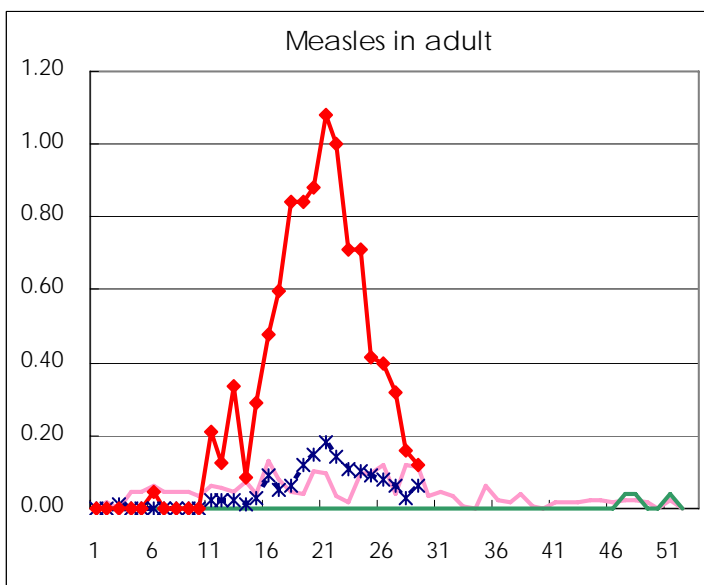
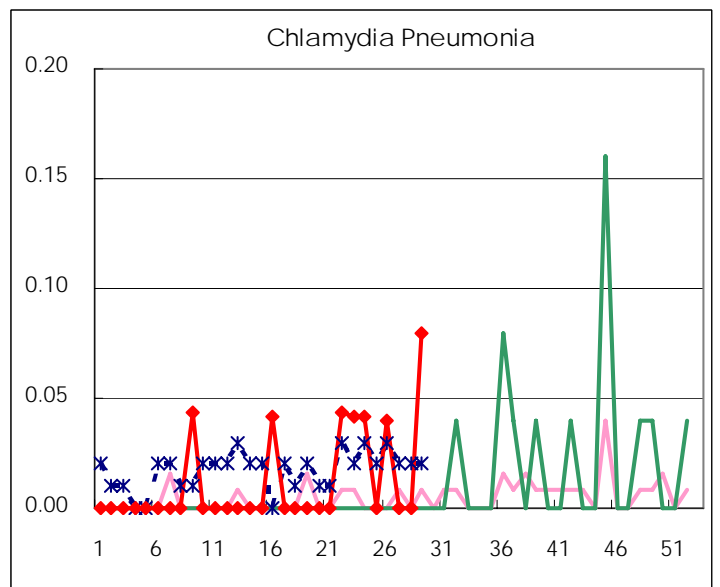
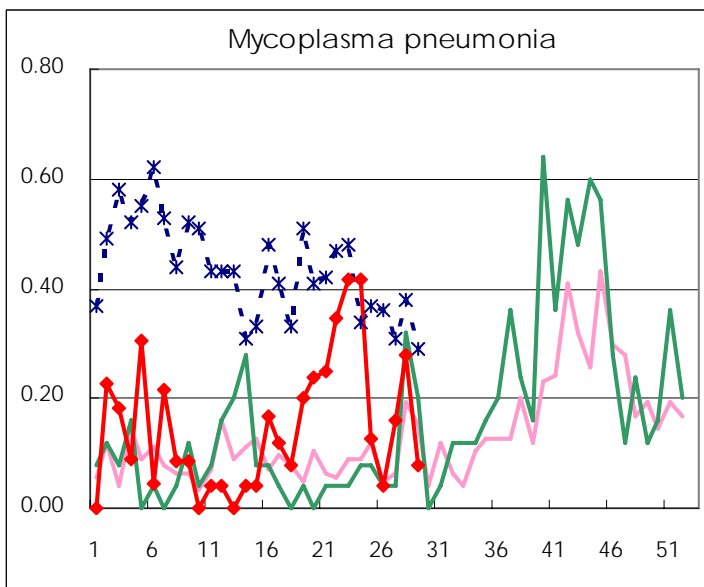
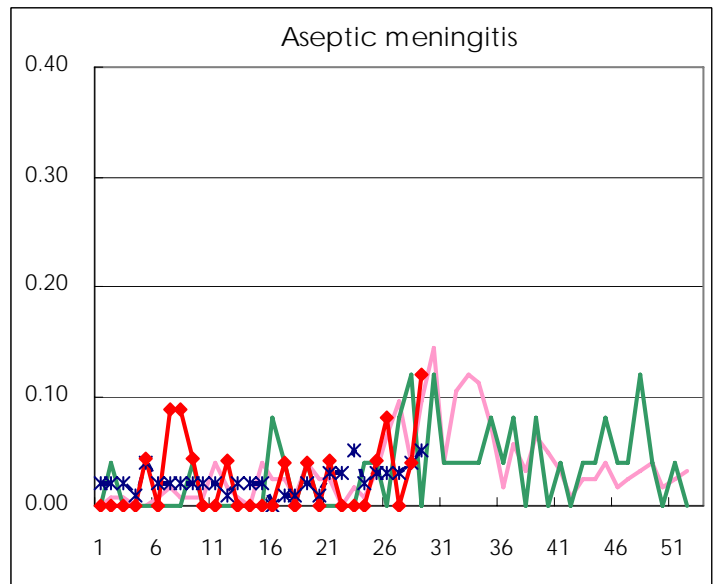
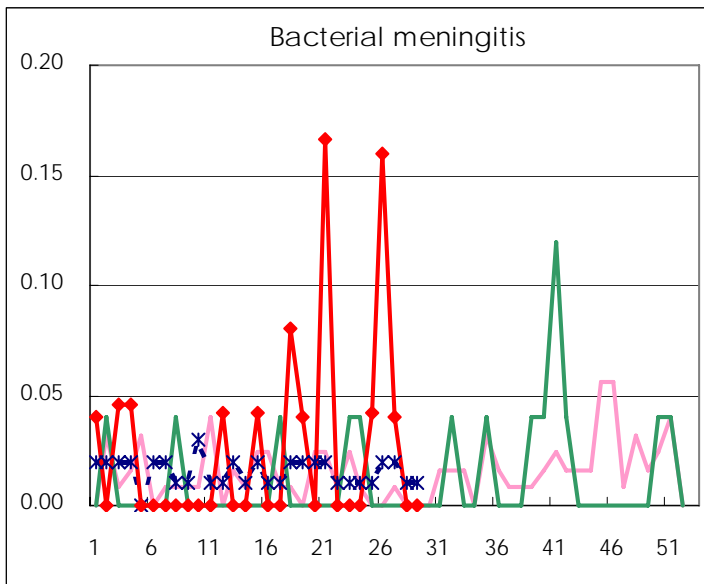
( Blank means 0. )

# Disease Trend Graph (weekly reported cases per fixed-point in comparison)









Number of sentinel facilities for weekly reporting		
Types of sentinels	Number of sentinels	Sentinels having reported
Pediatric	150	148
Influenza	290	284
Ophthalmic	39	39
Specially-designated	25	25

**Tokyo Metropolitan Government  
Infectious Disease Surveillance Center**