
INFECTIOUS DISEASES WEEKLY REPORT

TOKYO IDWR

Tokyo Metropolitan Infectious Disease Surveillance Center

2 August 2007 / Number 30

Surveillance System in Tokyo, Japan

The infectious diseases which all physicians must report

All physicians must report to health centers the incidence of the diseases which are shown at page one. Health centers electronically report the individual cases to Tokyo Metropolitan Infectious Disease Surveillance Center.

The infectious diseases required to be reported by the sentinels

The numbers of patients who visit the sentinel clinics or hospitals during a week are reported to health centers in Tokyo. And they electronically report the numbers to Tokyo Metropolitan Infectious Disease Surveillance Center. We have about 400 sentinel clinics and hospitals in Tokyo.

1st Week is early January and 52nd Week is end of December.

Tokyo Metropolitan Institute of Public Health
Epidemiological Information Office

TEL:81-3-3363-3213 FAX:81-3-5332-7365

e-mail:idsc@tokyo-eiken.go.jp

URL:idsc.tokyo-eiken.go.jp/

Number of patients with the diseases which all physicians must report

Category	Diseases	Tokyo				Japan		
		27th	28th	29th	30th	Cum 2007	30th	Cum 2007
I	Ebola hemorrhagic fever							
	Crimean-Congo hemorrhagic fever							
	Smallpox							
	South American hemorrhagic fever							
	Plague							
	Marburg disease							
	Lassa fever							
II	Acute poliomyelitis							
	Tuberculosis	57	80	60	59	1185	230	6279
	Diphtheria							
	Severe Acute Respiratory Syndrome(SARS)							
III	Cholera					2	1	9
	Shigellosis	1	7	1	3	49	6	284
	Enterohemorrhagic Escherichia coli infection	20	33	12	11	303	176	1712
	Typhoid fever				1	5		18
	Paratyphoid fever				1	4	1	9
IV	Hepatitis E		1			2		32
	West Nile fever							
	Hepatitis A					14	3	98
	Echinococcosis		1			3		9
	Yellow fever							
	Psittacosis					1	1	21
	Omsk hemorrhagic fever							
	Relapsing fever							
	Kyasanur forest disease							
	Q fever							3
	Rabies							
	Coccidioidomycosis				1	2		3
	Monkeypox							
	Hemorrhagic fever with renal syndrome							
	Western equine encephalitis							
	Tick-borne encephalitis							
	Anthrax							
	Scrub typhus(Tsutsugamushi disease)					2		92
	Dengue fever	1		1	1	8	4	41
	Eastern equine encephalitis							
	Avian influenza virus infection							
	Nipah virus infection							
	Japanese spotted fever						1	23
	Japanese encephalitis							1
	Epidemic typhus							
	Hantavirus pulmonary syndrome							
	Herpes B virus infection							
	Glanders							
	Brucellosis							1
	Venezuelan equine encephalitis							
	Hendra virus infection							
	Botulism							2
	Malaria	1			1	14	1	27
Tularemia								
Lyme disease							2	
Lyssavirus infection(excluding rabies)								
Rift valley fever								
Melioidosis								
Legionellosis	2	2	2	4	26	15	316	
Leptospirosis					2		6	
Rocky mountain spotted fever								

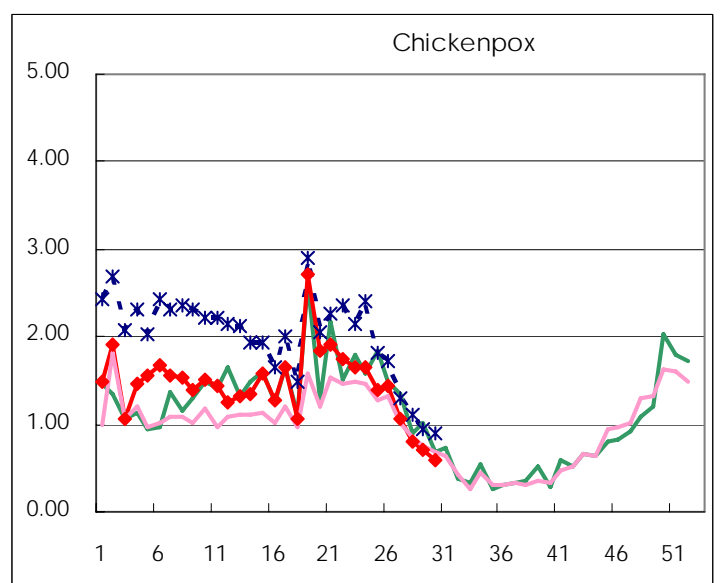
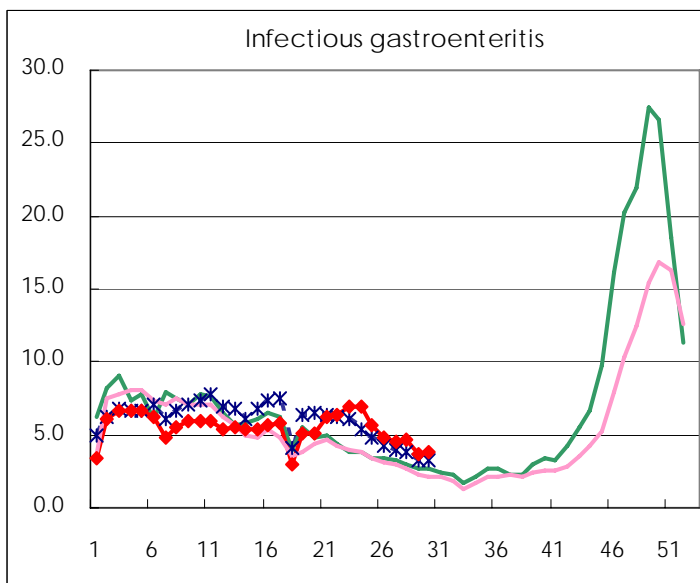
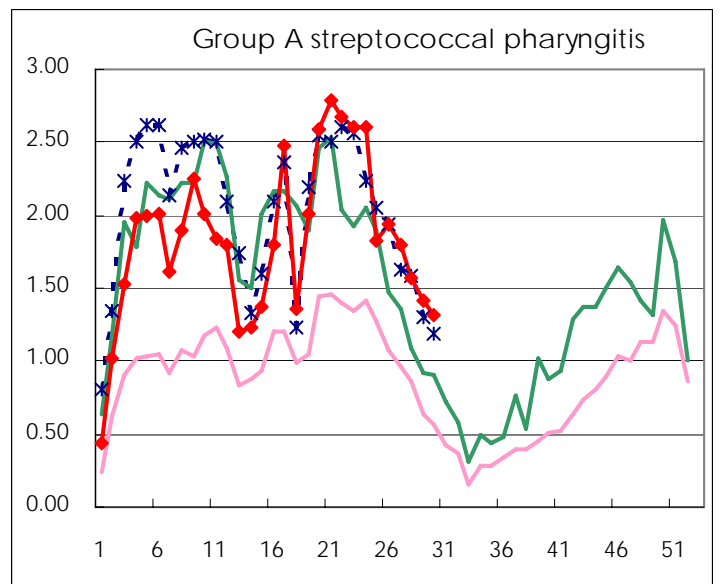
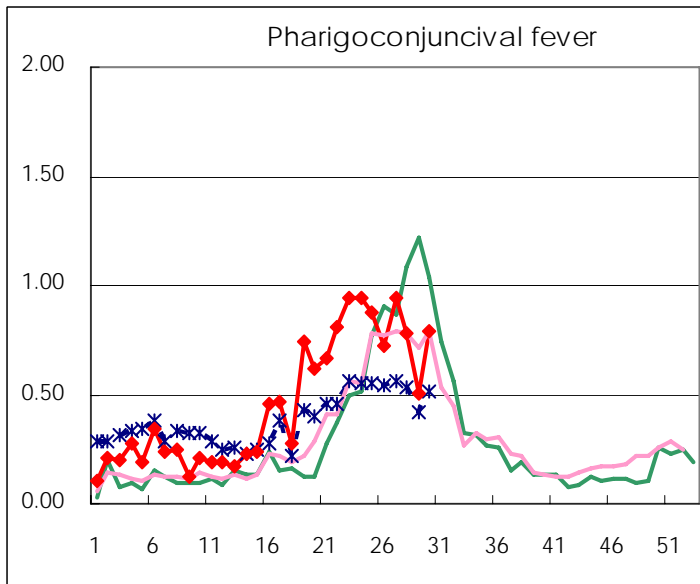
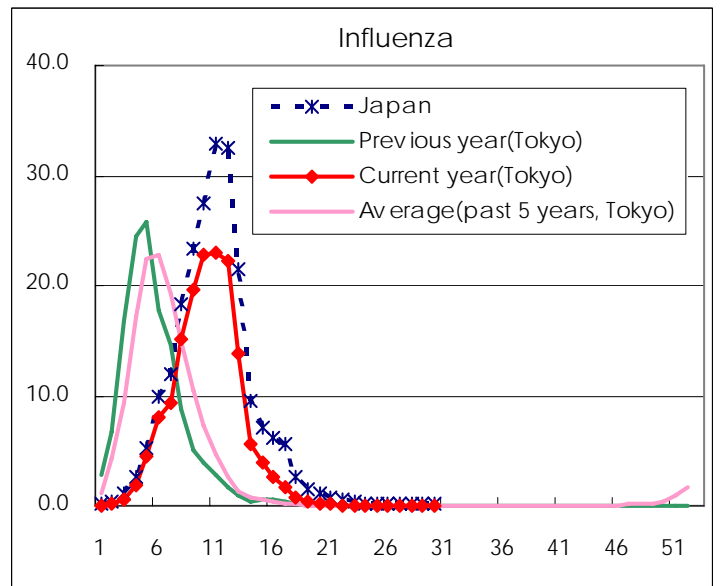
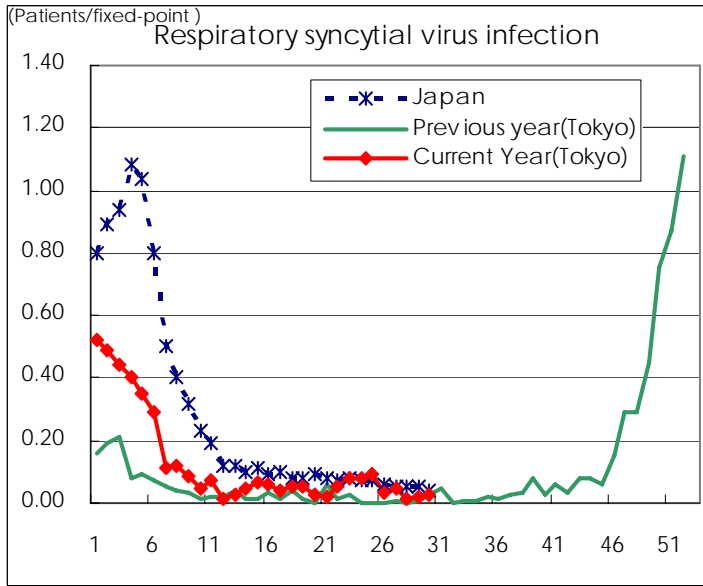
Category	Diseases	Tokyo				Cum 2007	Japan	
		27th	28th	29th	30th		30th	Cum 2007
V	Amebiasis	7	4	4	3	98	3	438
	Viral hepatitis(excluding hepatitis A and E)	2	3	2	1	24	1	126
	Acute encephalitis(excluding JE and WNE)		1	1		9	1	135
	Cryptosporidiosis							4
	Creutzfeldt-Jakob disease			1		8	1	90
	Severe invasive streptococcal infections(TSLS)					3	1	60
	Acquired immunodeficiency syndrome (AIDS)	11	22	6	8	287	4	789
	Giardiasis	2				10		28
	Meningococcal meningitis					1		11
	Congenital rubella syndrome							
	Syphilis	4	4	1	4	77	6	367
	Tetanus					1	1	52
	Vancomycin-resistant S. aureus infection							
	Vancomycin-resistant Enterococcus infection			1	3	12		40
designated	Influenza (H5N1)							

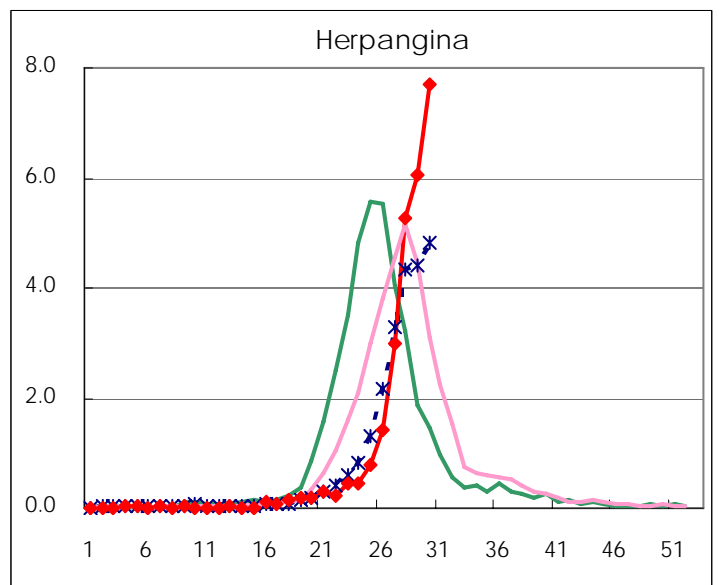
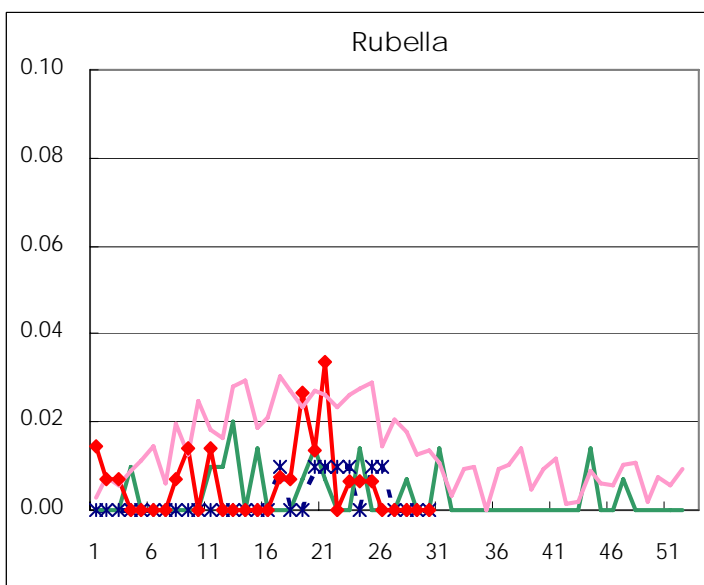
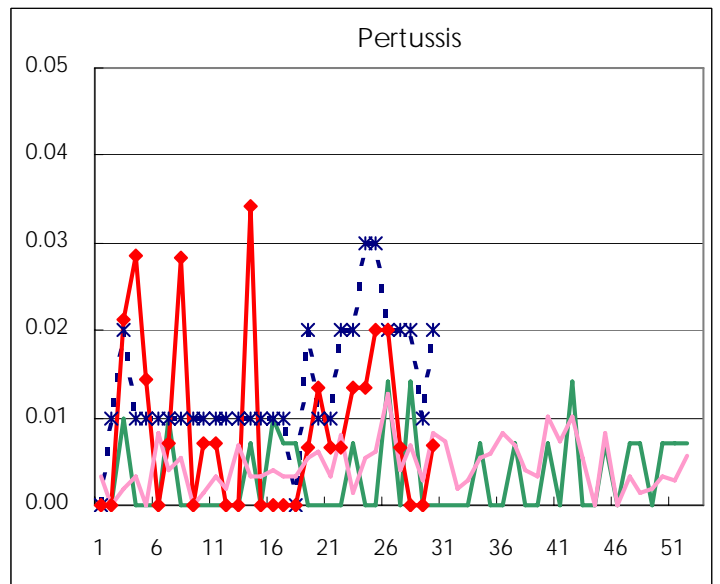
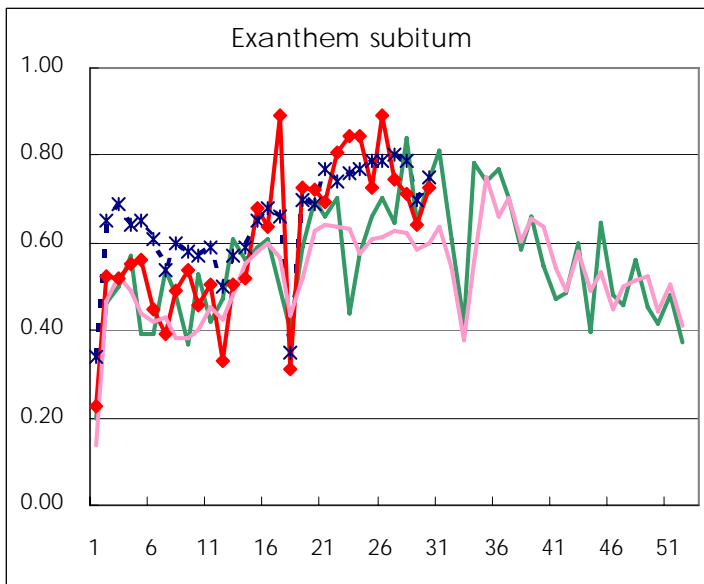
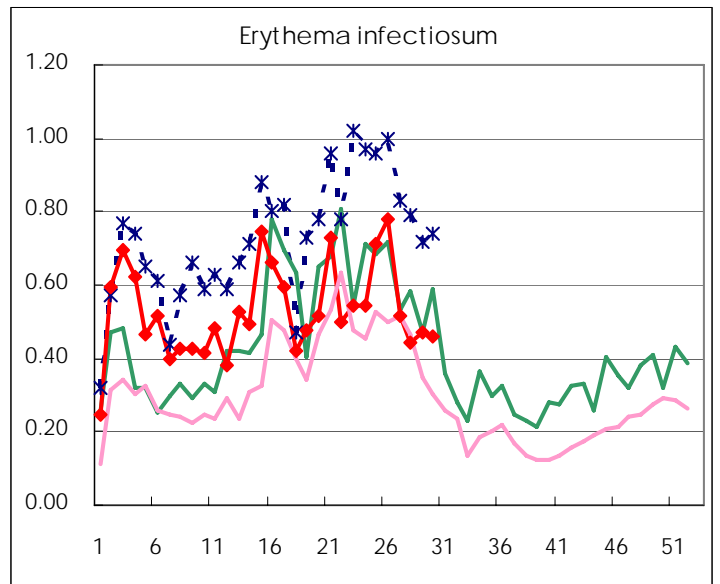
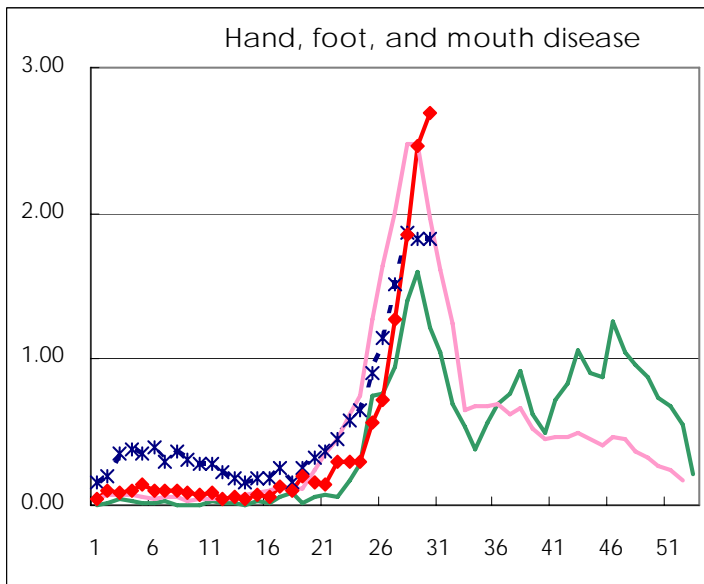
Number of patients with the diseases to be reported
by the designated clinics and hospitals

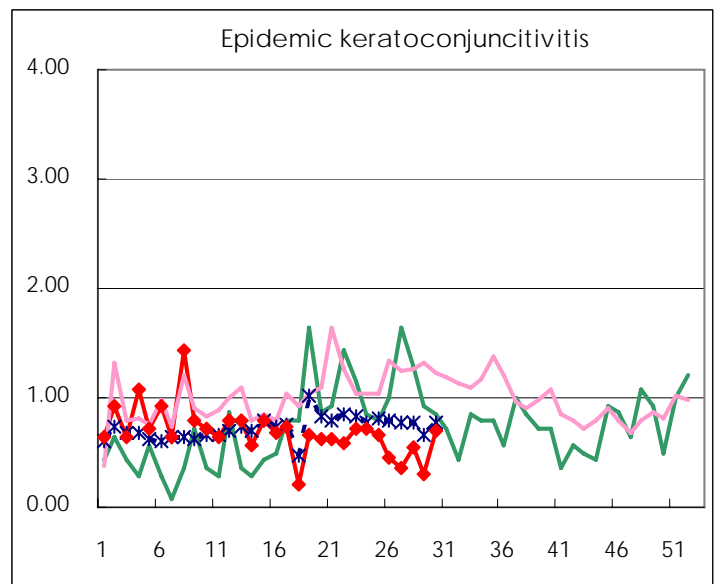
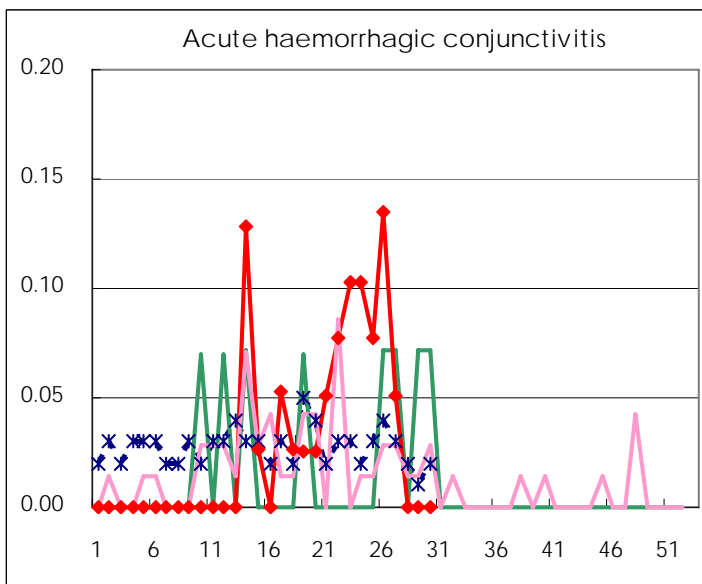
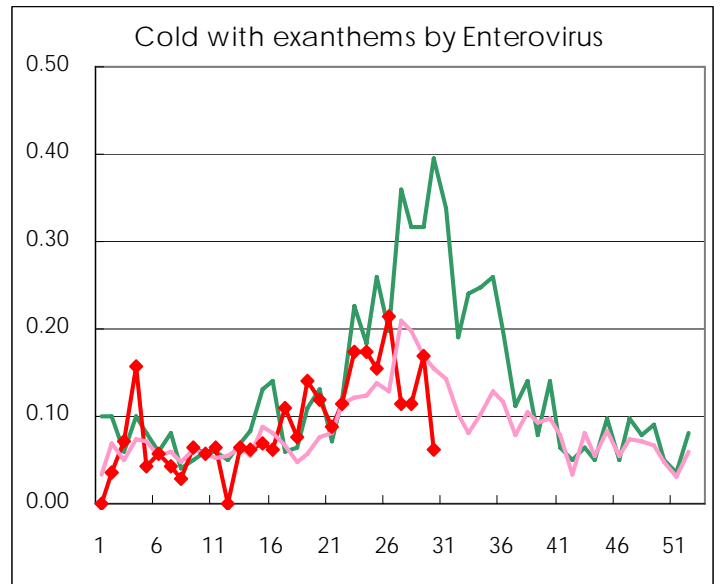
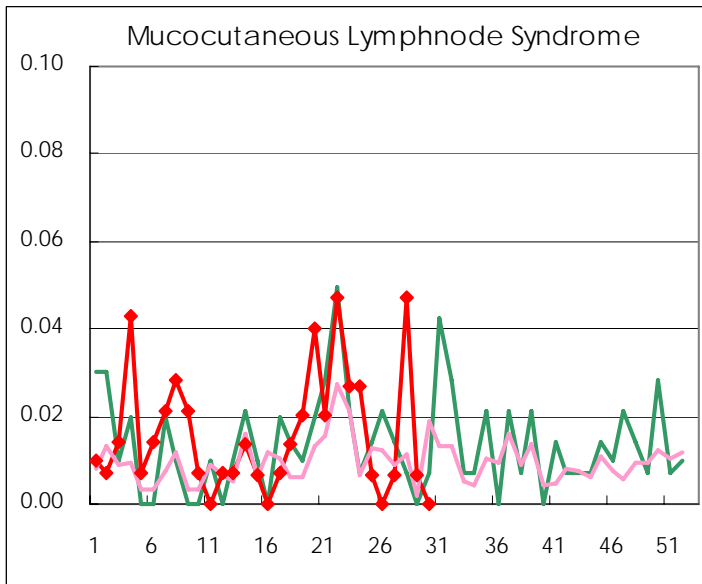
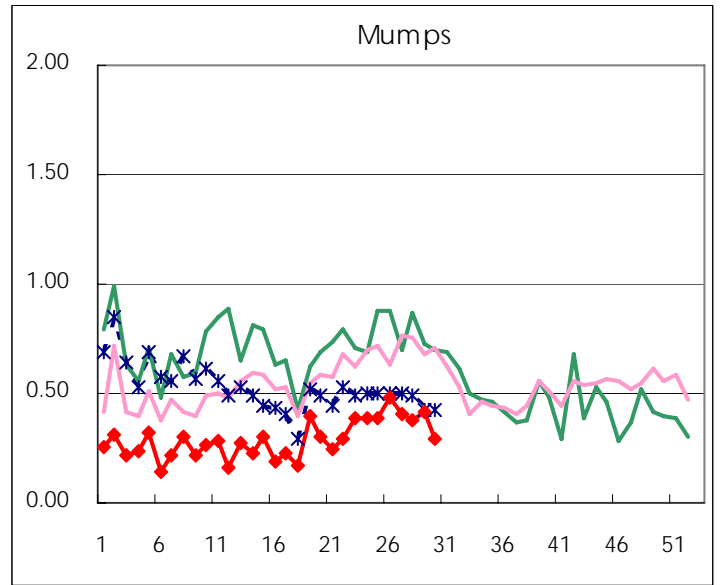
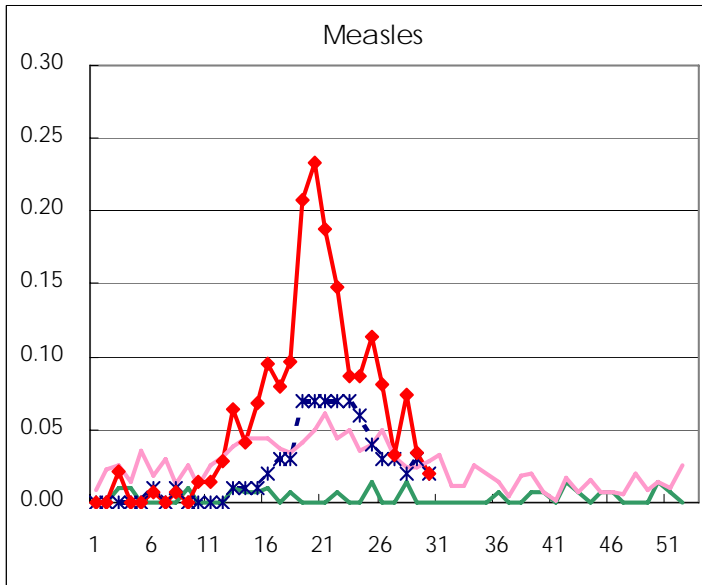
Diseases	2007				4wks total	Cum 2007
	27th	28th	29th	30th		
Respiratory syncytial virus infection	7	2	3	4	16	530
Influenza	6	3	4	2	15	43783
Pharyngoconjunctival fever	142	116	75	116	449	2022
Group A streptococcal pharyngitis	269	235	210	193	907	7961
Infectious gastroenteritis	674	691	551	552	2,468	23593
Chickenpox	158	120	104	87	469	6373
Hand, foot, and mouth disease	190	276	364	395	1,225	1839
Erythema infectiosum	77	66	70	68	281	2311
Exanthem subitum	112	106	95	107	420	2637
Pertussis	1			1	2	32
Rubella						25
Herpangina	446	785	894	1,132	3,257	3940
Measles	5	11	5	3	24	278
Mumps	61	56	61	43	221	1265
Cold with exanthems by Enterovirus	17	17	25	9	68	386
Mucocutaneous Lymphnode Syndrome	1	7	1		9	68
Acute hemorrhagic conjunctivitis	2				2	32
Epidemic keratoconjunctivitis	14	21	12	27	74	529
Bacterial meningitis	1			1	2	19
Aseptic meningitis		1	3	7	11	26
Mycoplasma pneumonia	4	7	2	12	25	108
Chlamydial pneumonia (excluding psittacosis)			2		2	7
Measles in adults	8	4	3	6	21	240

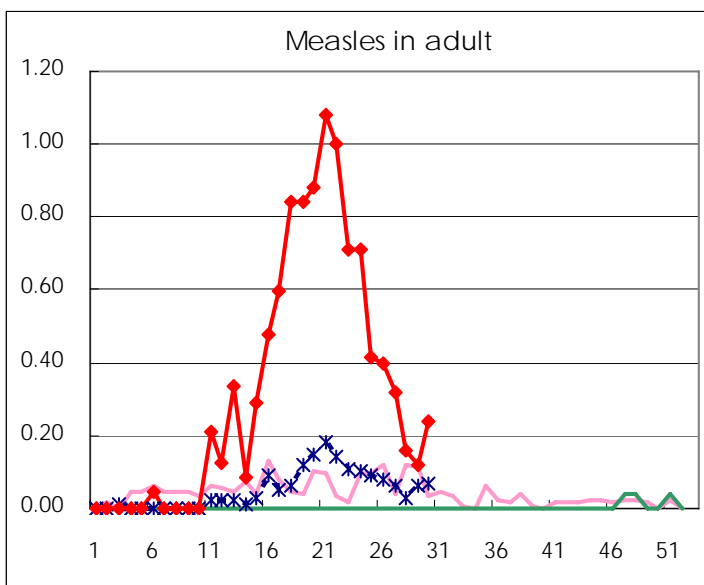
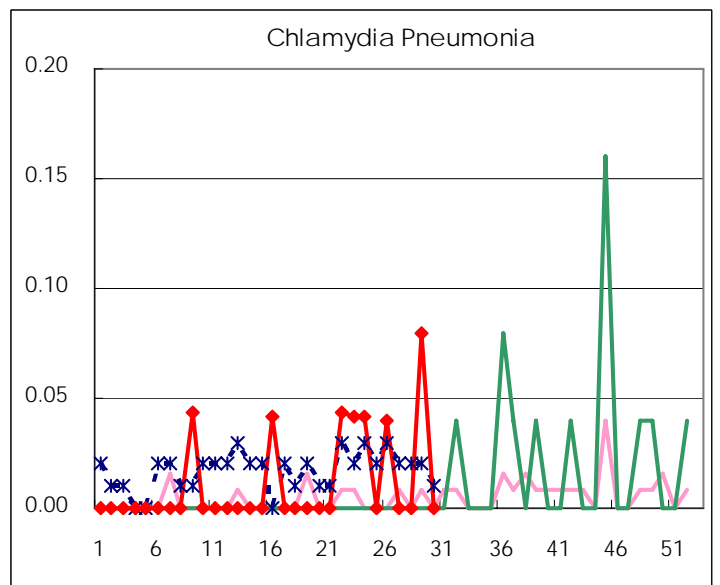
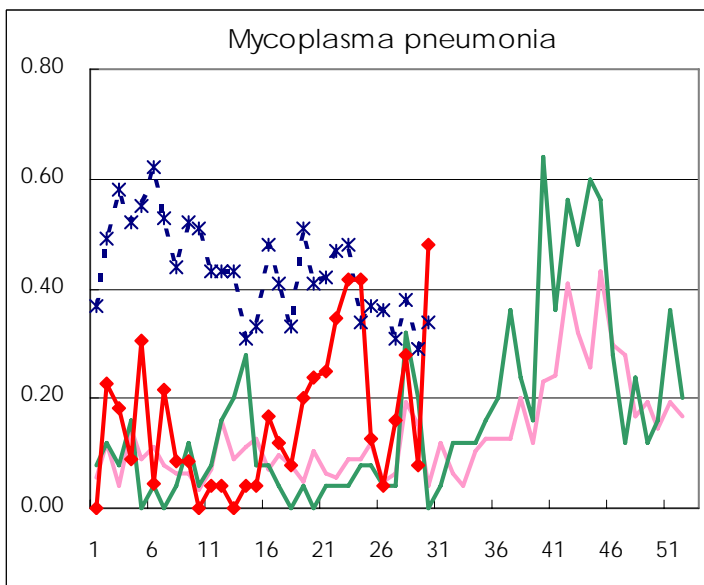
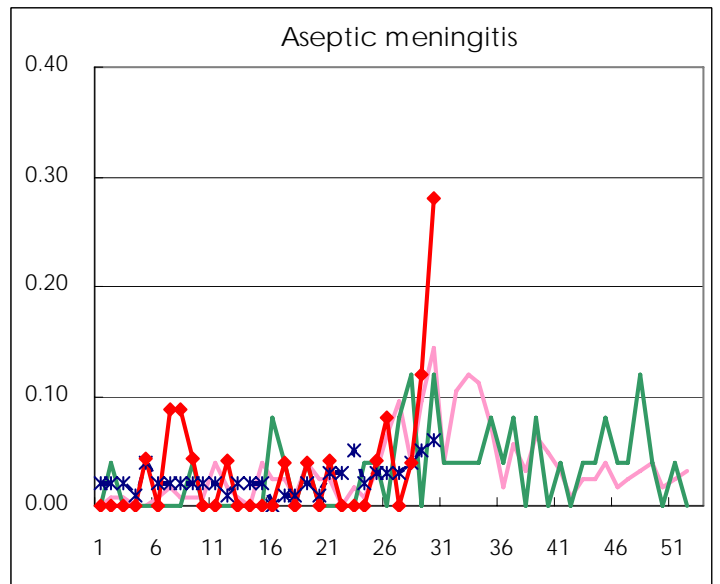
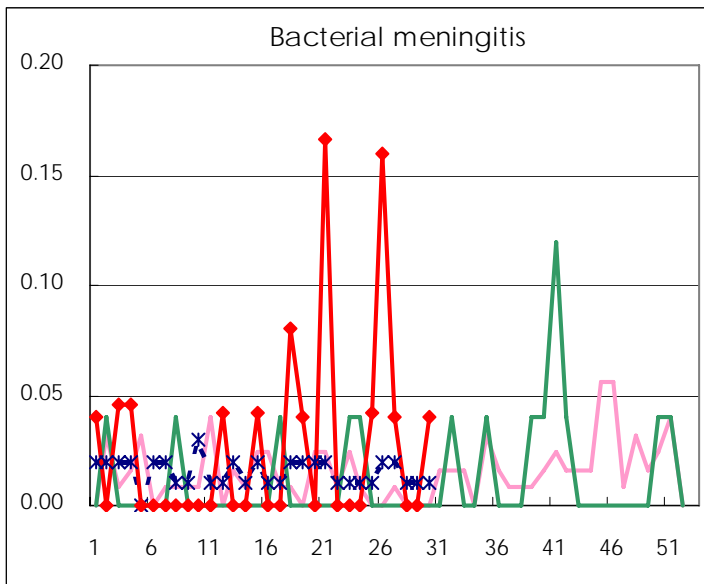
(Blank means 0.)

Disease Trend Graph (weekly reported cases per fixed-point in comparison)









Number of sentinel facilities for weekly reporting		
Types of sentinels	Number of sentinels	Sentinels having reported
Pediatric	150	147
Influenza	290	283
Ophthalmic	39	39
Specially-designated	25	25

Tokyo Metropolitan Government
Infectious Disease Surveillance Center