

---

INFECTIOUS DISEASES WEEKLY REPORT

# TOKYO IDWR

Tokyo Metropolitan Infectious Disease Surveillance Center

## 16 August 2007 / Number 32

### Surveillance System in Tokyo, Japan

The infectious diseases which all physicians must report

All physicians must report to health centers the incidence of the diseases which are shown at page one. Health centers electronically report the individual cases to Tokyo Metropolitan Infectious Disease Surveillance Center.

The infectious diseases required to be reported by the sentinels

The numbers of patients who visit the sentinel clinics or hospitals during a week are reported to health centers in Tokyo. And they electronically report the numbers to Tokyo Metropolitan Infectious Disease Surveillance Center. We have about 400 sentinel clinics and hospitals in Tokyo.

1st Week is early January and 52nd Week is end of December.

Tokyo Metropolitan Institute of Public Health  
Epidemiological Information Office

TEL:81-3-3363-3213 FAX:81-3-5332-7365

e-mail:[idsc@tokyo-eiken.go.jp](mailto:idsc@tokyo-eiken.go.jp)

URL:[idsc.tokyo-eiken.go.jp/](http://idsc.tokyo-eiken.go.jp/)

---

## Number of patients with the diseases which all physicians must report

Category	Diseases	Tokyo				Japan		
		29th	30th	31th	32th	Cum 2007	32th	Cum 2007
I	Ebola hemorrhagic fever							
	Crimean-Congo hemorrhagic fever							
	Smallpox							
	South American hemorrhagic fever							
	Plague							
	Marburg disease							
	Lassa fever							
II	Acute poliomyelitis							
	Tuberculosis	66	82	84	55	1377	225	6764
	Diphtheria							
	Severe Acute Respiratory Syndrome(SARS)							
III	Cholera					2		9
	Shigellosis	1	3		2	51		287
	Enterohemorrhagic Escherichia coli infection	12	14	21	9	336	165	1946
	Typhoid fever		1	1		6	1	21
	Paratyphoid fever		1			4		9
IV	Hepatitis E					2	1	35
	West Nile fever							
	Hepatitis A				1	15	2	100
	Echinococcosis			1		4		10
	Yellow fever							
	Psittacosis				1	2	1	22
	Omsk hemorrhagic fever							
	Relapsing fever							
	Kyasanur forest disease							
	Q fever							3
	Rabies							
	Coccidioidomycosis		1			2		3
	Monkeypox							
	Hemorrhagic fever with renal syndrome							
	Western equine encephalitis							
	Tick-borne encephalitis							
	Anthrax							
	Scrub typhus(Tsutsugamushi disease)					2	1	93
	Dengue fever	1	1			8		41
	Eastern equine encephalitis							
	Avian influenza virus infection							
	Nipah virus infection							
	Japanese spotted fever							25
	Japanese encephalitis							1
	Epidemic typhus							
	Hantavirus pulmonary syndrome							
	Herpes B virus infection							
	Glanders							
	Brucellosis							1
	Venezuelan equine encephalitis							
	Hendra virus infection							
	Botulism							2
	Malaria		1			14		27
Tularemia								
Lyme disease			1		1	1	3	
Lyssavirus infection(excluding rabies)								
Rift valley fever								
Melioidosis								
Legionellosis	2	4	2	4	32	25	353	
Leptospirosis					2		6	
Rocky mountain spotted fever								

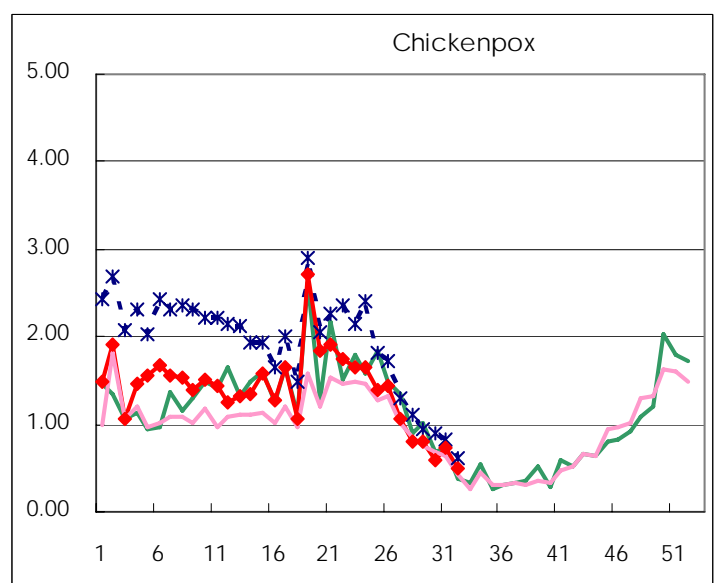
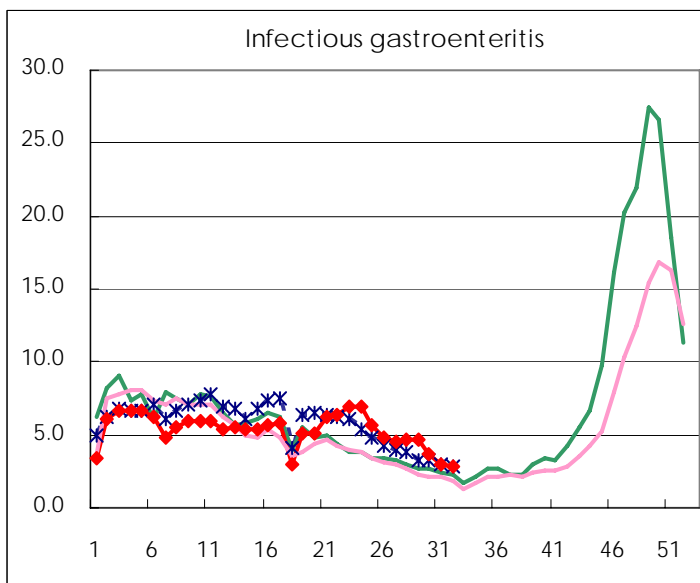
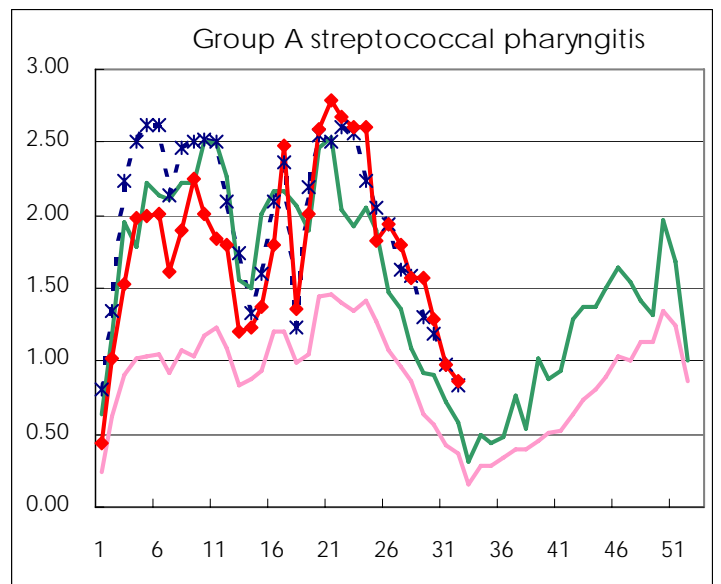
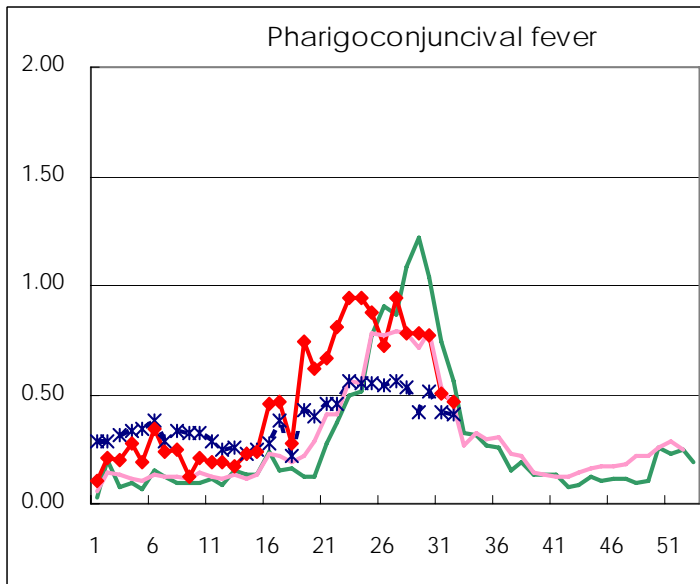
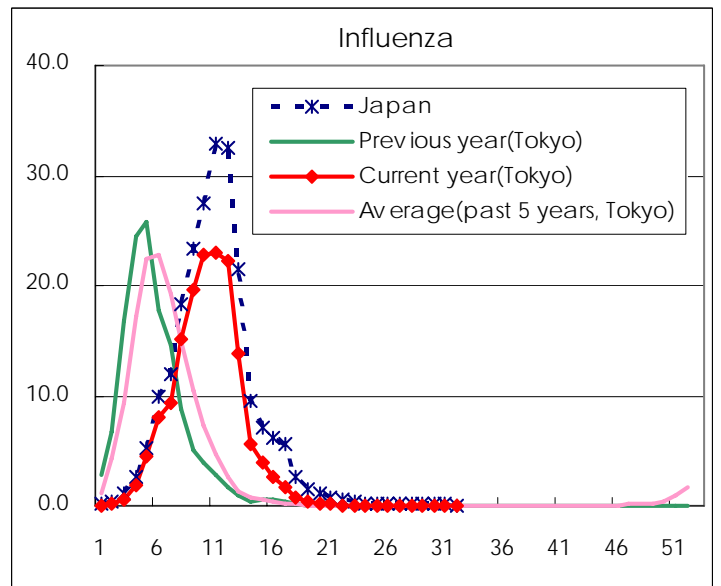
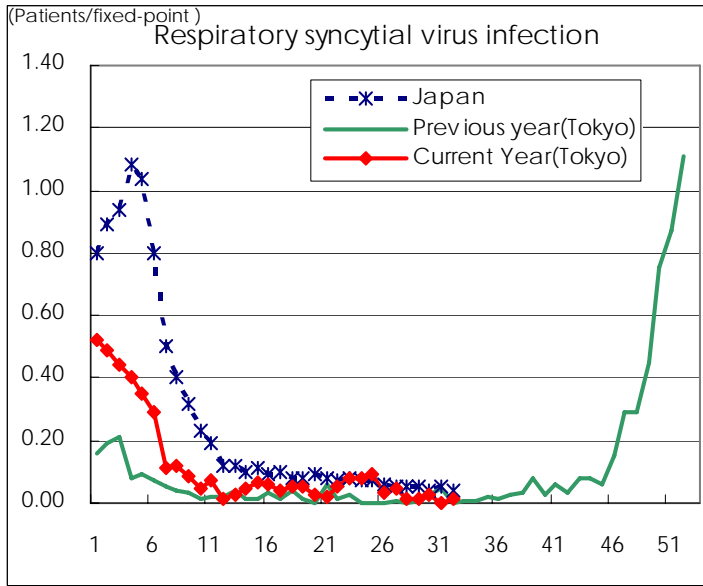
Category	Diseases	Tokyo				Cum 2007	Japan	
		29th	30th	31th	32th		32th	Cum 2007
V	Amebiasis	4	3	6	8	112	14	461
	Viral hepatitis(excluding hepatitis A and E)	2	1	2		26	6	135
	Acute encephalitis(excluding JE and WNE)	1		2		11	1	142
	Cryptosporidiosis							4
	Creutzfeldt-Jakob disease	1				8	3	96
	Severe invasive streptococcal infections(TSLS)					3	2	62
	Acquired immunodeficiency syndrome (AIDS)	6	8	12	7	306	8	838
	Giardiasis					10	1	30
	Meningococcal meningitis					1		11
	Congenital rubella syndrome							
	Syphilis	1	3	4	6	86	9	381
	Tetanus					1	5	58
	Vancomycin-resistant S. aureus infection							
	Vancomycin-resistant Enterococcus infection	1	1			10		41
designated	Influenza (H5N1)							

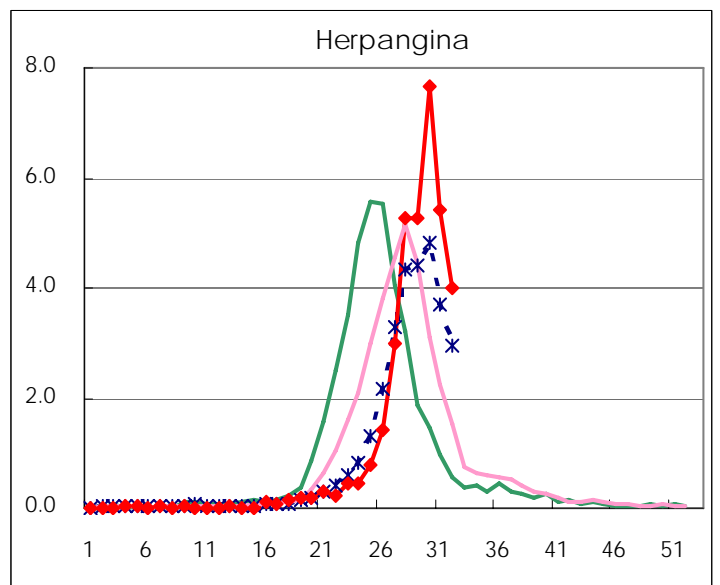
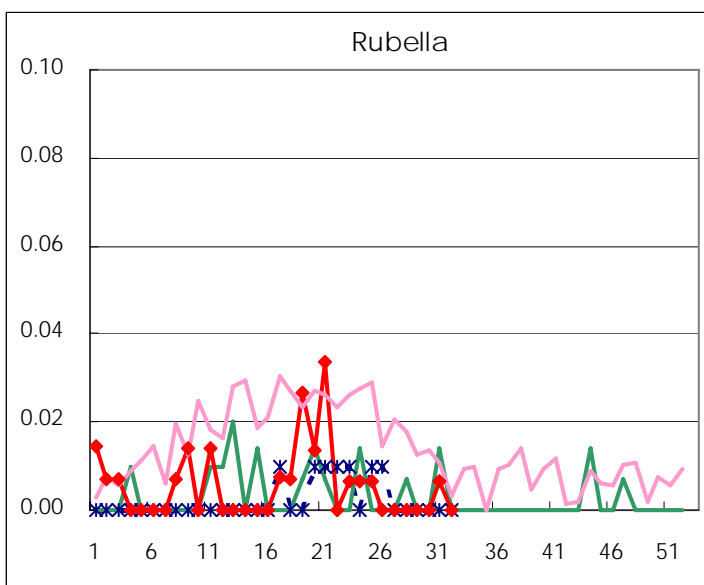
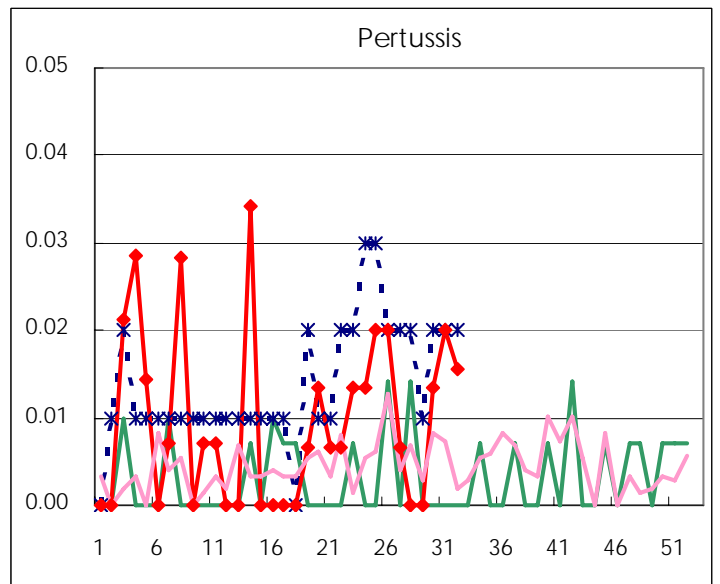
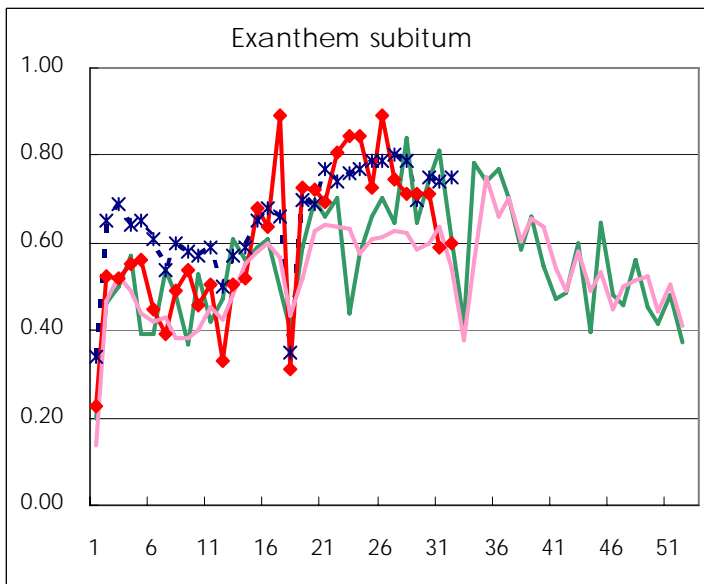
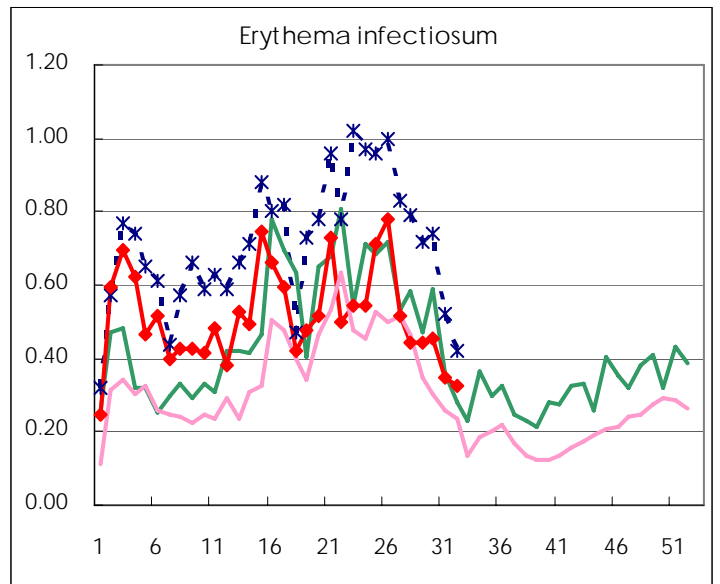
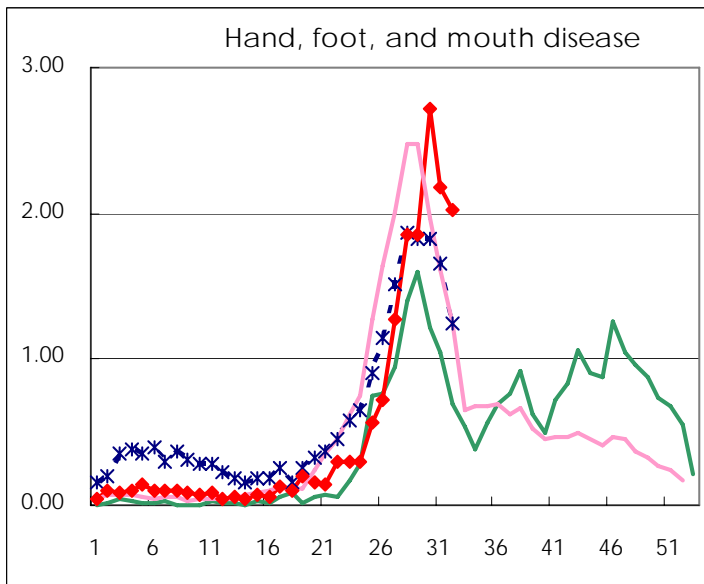
Number of patients with the diseases to be reported  
by the designated clinics and hospitals

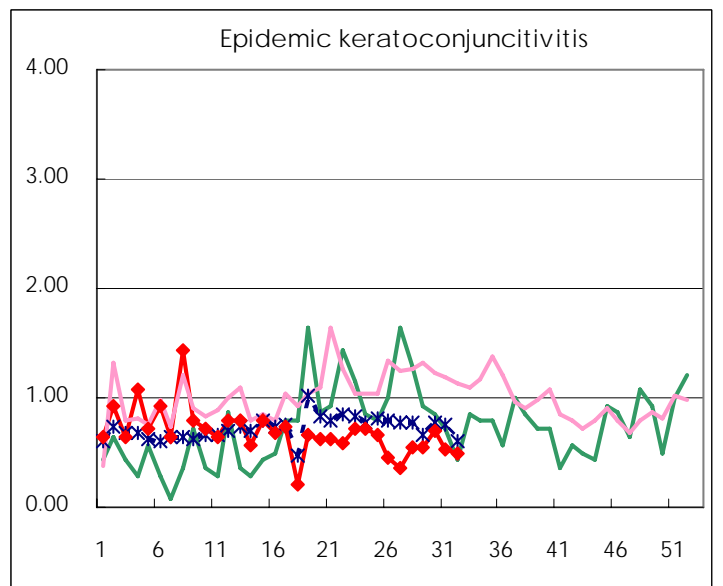
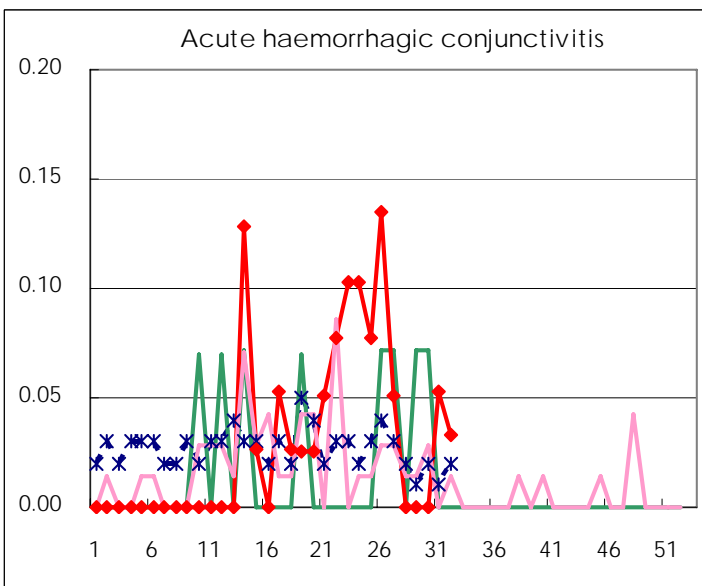
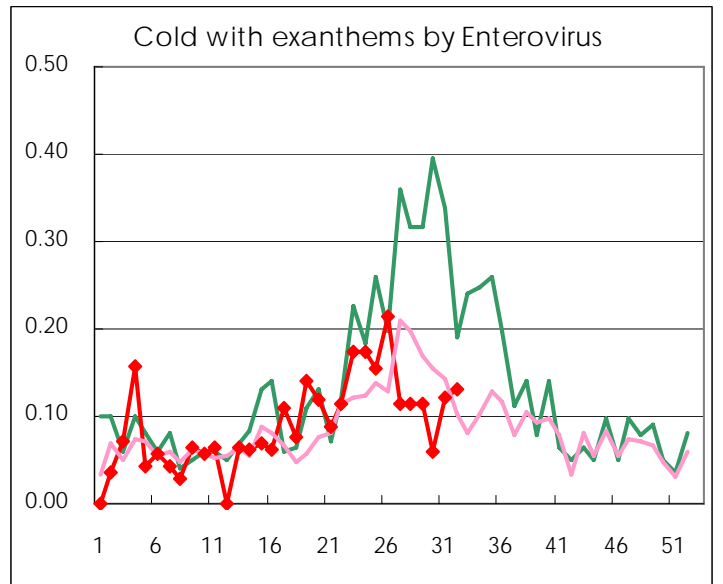
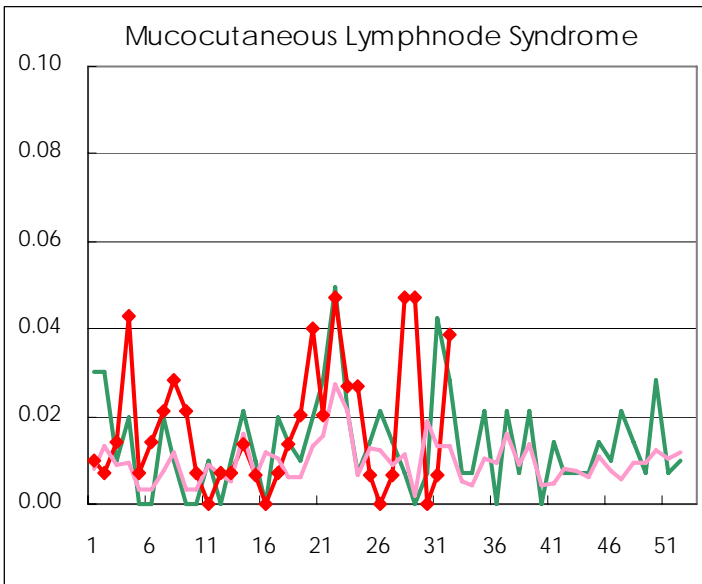
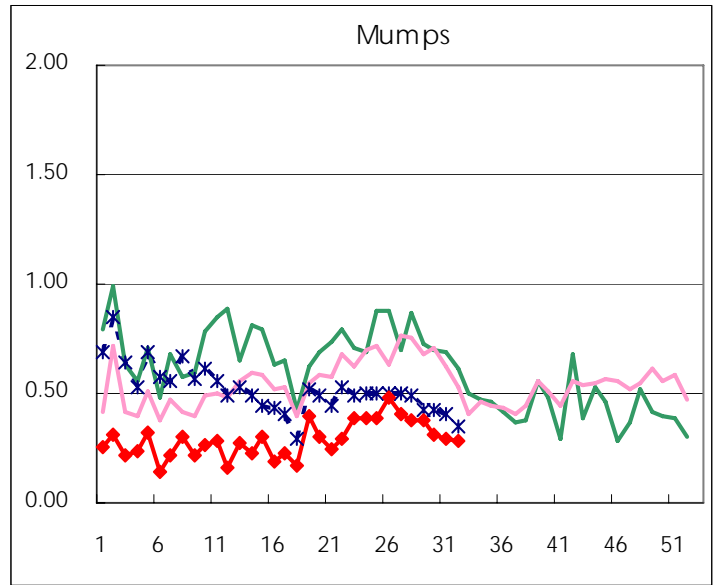
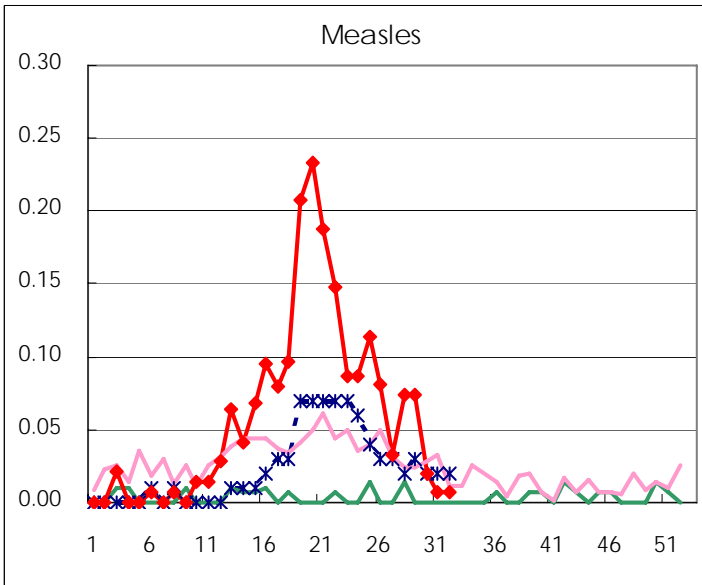
Diseases	2007				4wks total	Cum 2007
	29th	30th	31th	32th		
Respiratory syncytial virus infection	3	4		2	9	532
Influenza	4	2	4		10	43787
Pharyngoconjunctival fever	75	116	75	60	326	2157
Group A streptococcal pharyngitis	211	193	145	111	660	8218
Infectious gastroenteritis	557	552	449	373	1,931	24421
Chickenpox	106	89	110	63	368	6550
Hand, foot, and mouth disease	365	407	325	261	1,358	2438
Erythema infectiosum	70	68	52	42	232	2405
Exanthem subitum	95	107	88	77	367	2802
Pertussis		2	3	2	7	38
Rubella			1		1	26
Herpangina	894	1,149	807	514	3,364	5278
Measles	6	3	1	1	11	281
Mumps	63	46	44	37	190	1351
Cold with exanthems by Enterovirus	25	9	18	17	69	421
Mucocutaneous Lymphnode Syndrome	1		1	5	7	74
Acute hemorrhagic conjunctivitis			2	1	3	35
Epidemic keratoconjunctivitis	12	27	20	15	74	564
Bacterial meningitis		1			1	19
Aseptic meningitis	3	7	1	4	15	31
Mycoplasma pneumonia	2	12	5	3	22	116
Chlamydial pneumonia (excluding psittacosis)	2			1	3	8
Measles in adults	3	6	3	2	14	245

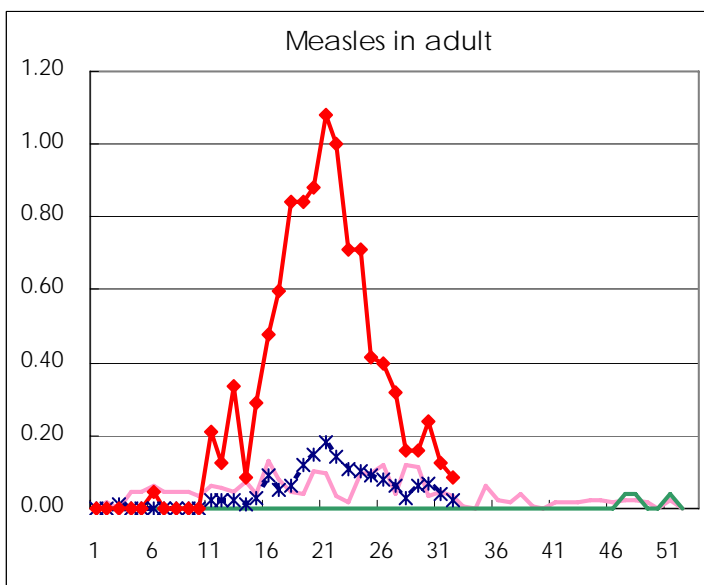
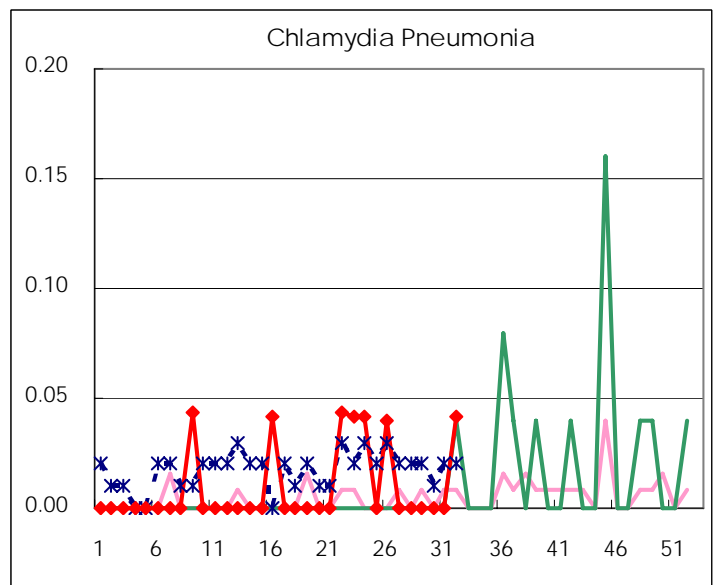
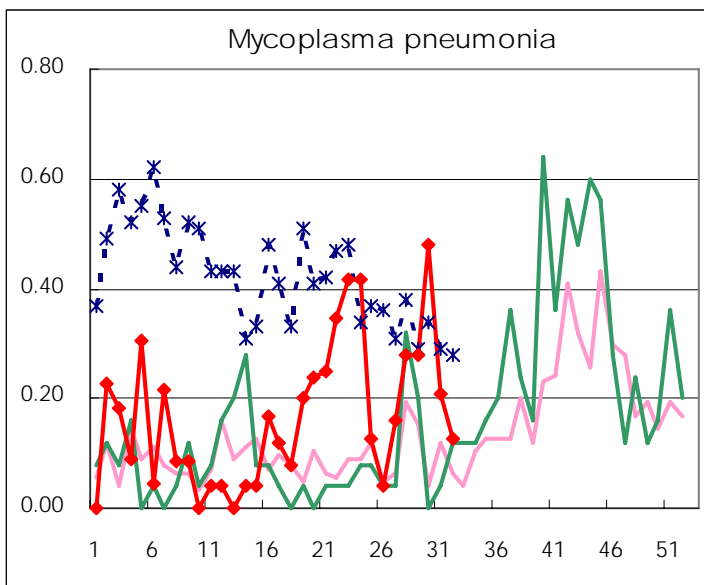
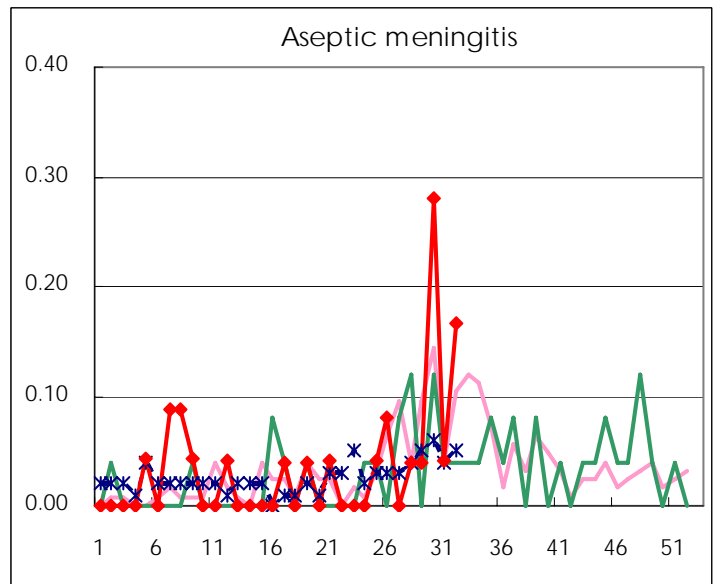
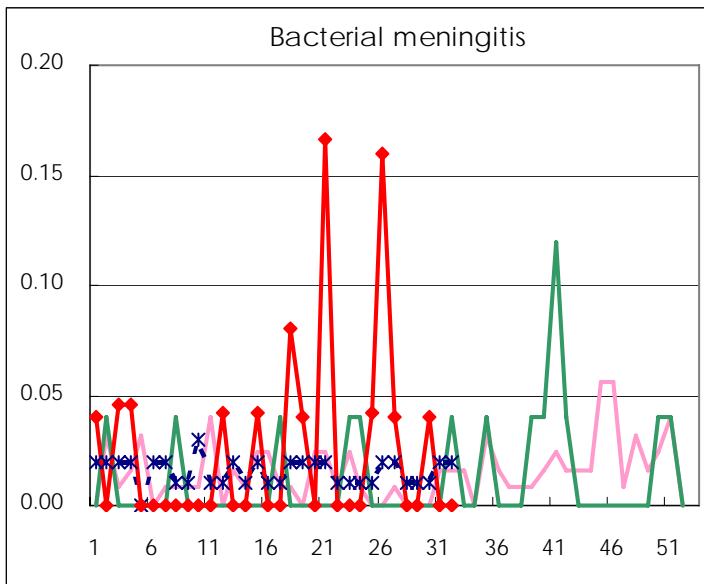
( Blank means 0. )

# Disease Trend Graph (weekly reported cases per fixed-point in comparison)









Number of sentinel facilities for weekly reporting		
Types of sentinels	Number of sentinels	Sentinels having reported
Pediatric	150	129
Influenza	290	243
Ophthalmic	39	30
Specially-designated	25	24

Tokyo Metropolitan Government  
Infectious Disease Surveillance Center