

---

INFECTIOUS DISEASES WEEKLY REPORT

# TOKYO IDWR

Tokyo Metropolitan Infectious Disease Surveillance Center

## 23 August 2007 / Number 33

### Surveillance System in Tokyo, Japan

The infectious diseases which all physicians must report

All physicians must report to health centers the incidence of the diseases which are shown at page one. Health centers electronically report the individual cases to Tokyo Metropolitan Infectious Disease Surveillance Center.

The infectious diseases required to be reported by the sentinels

The numbers of patients who visit the sentinel clinics or hospitals during a week are reported to health centers in Tokyo. And they electronically report the numbers to Tokyo Metropolitan Infectious Disease Surveillance Center. We have about 400 sentinel clinics and hospitals in Tokyo.

1st Week is early January and 52nd Week is end of December.

Tokyo Metropolitan Institute of Public Health  
Epidemiological Information Office

TEL:81-3-3363-3213 FAX:81-3-5332-7365  
e-mail:[idsc@tokyo-eiken.go.jp](mailto:idsc@tokyo-eiken.go.jp)  
URL:[idsc.tokyo-eiken.go.jp/](http://idsc.tokyo-eiken.go.jp/)

---

## Number of patients with the diseases which all physicians must report

Category	Diseases	Tokyo					Japan	
		30th	31th	32th	33th	Cum 2007	33th	Cum 2007
I	Ebola hemorrhagic fever							
	Crimean-Congo hemorrhagic fever							
	Smallpox							
	South American hemorrhagic fever							
	Plague							
	Marburg disease							
	Lassa fever							
II	Acute poliomyelitis							
	Tuberculosis	83	93	71	56	1460	181	7638
	Diphtheria							
	Severe Acute Respiratory Syndrome(SARS)							
III	Cholera					2		9
	Shigellosis	3		2	1	52	11	320
	Enterohemorrhagic Escherichia coli infection	14	21	9	7	343	130	2277
	Typhoid fever	1	1			6	3	24
	Paratyphoid fever	1				4		9
IV	Hepatitis E					2		38
	West Nile fever							
	Hepatitis A			1		15		103
	Echinococcosis		1			4		12
	Yellow fever							
	Psittacosis			1		2	1	23
	Omsk hemorrhagic fever							
	Relapsing fever							
	Kyasanur forest disease							
	Q fever							3
	Rabies							
	Coccidioidomycosis	1				2		3
	Monkeypox							
	Hemorrhagic fever with renal syndrome							
	Western equine encephalitis							
	Tick-borne encephalitis							
	Anthrax							
	Scrub typhus(Tsutsugamushi disease)					2		93
	Dengue fever	1				8	3	46
	Eastern equine encephalitis							
	Avian influenza virus infection							
	Nipah virus infection							
	Japanese spotted fever						3	30
	Japanese encephalitis							1
	Epidemic typhus							
	Hantavirus pulmonary syndrome							
	Herpes B virus infection							
	Glanders							
	Brucellosis							1
	Venezuelan equine encephalitis							
	Hendra virus infection							
	Botulism							2
	Malaria	1			1	15	1	29
Tularemia								
Lyme disease		1			1	1	4	
Lyssavirus infection(excluding rabies)								
Rift valley fever								
Melioidosis								
Legionellosis	4	2	4		32	11	382	
Leptospirosis					2	1	8	
Rocky mountain spotted fever								
Amebiasis	3	6	9	3	116	7	502	

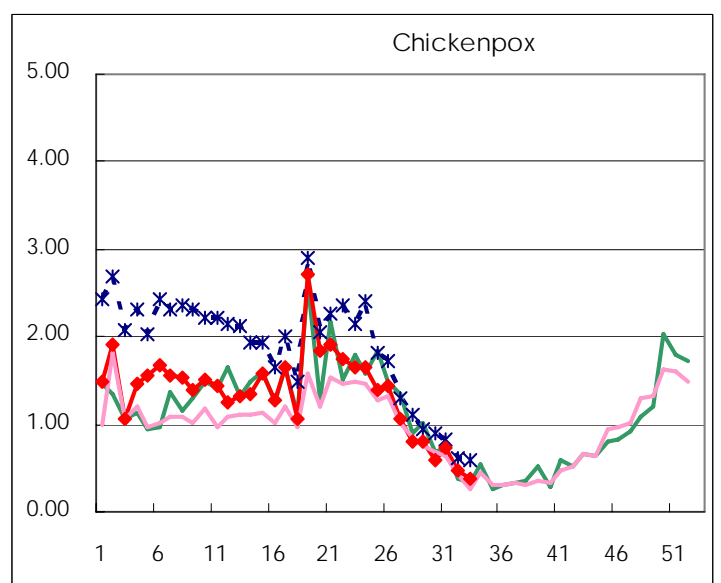
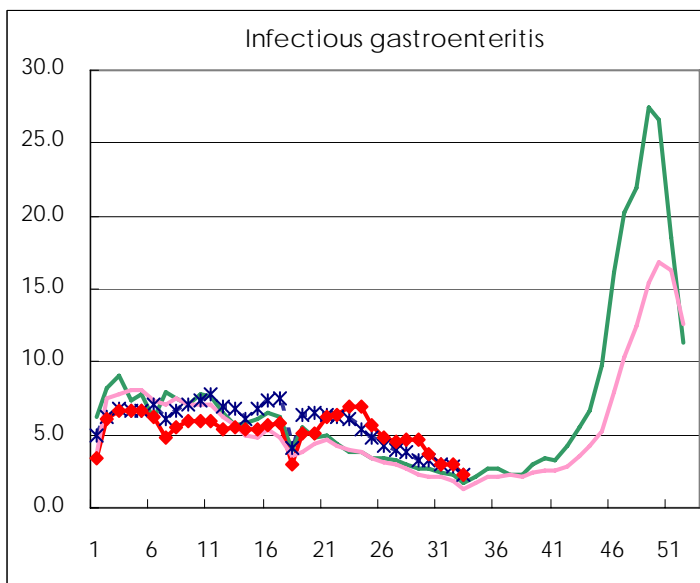
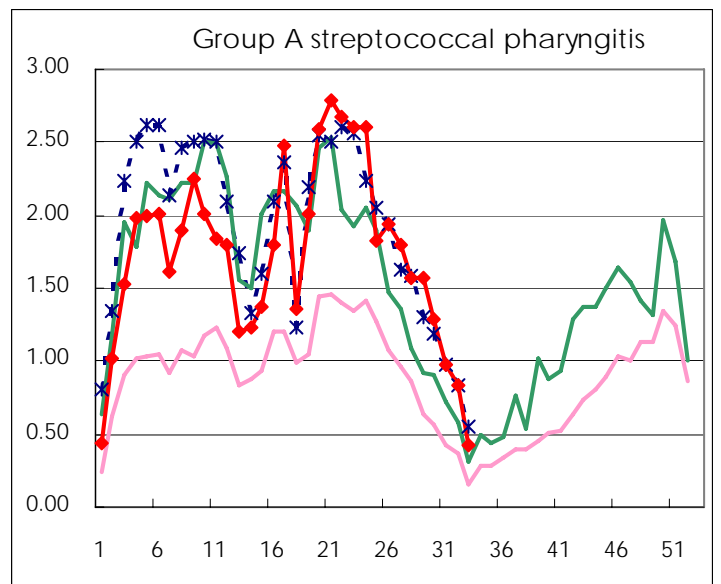
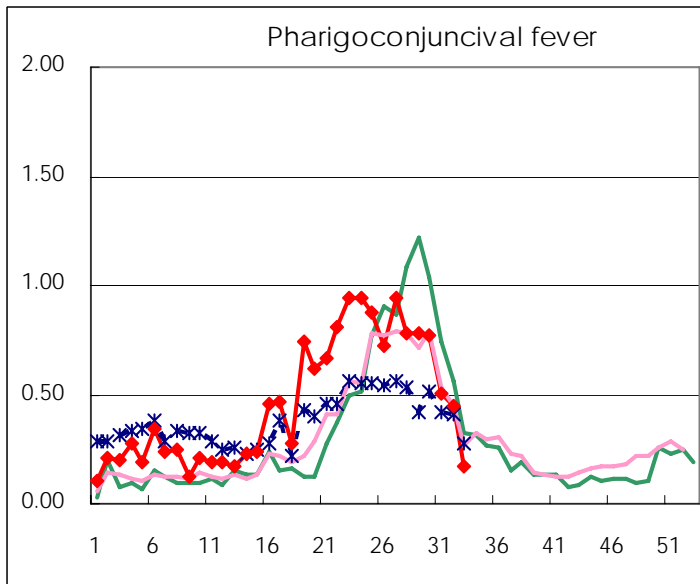
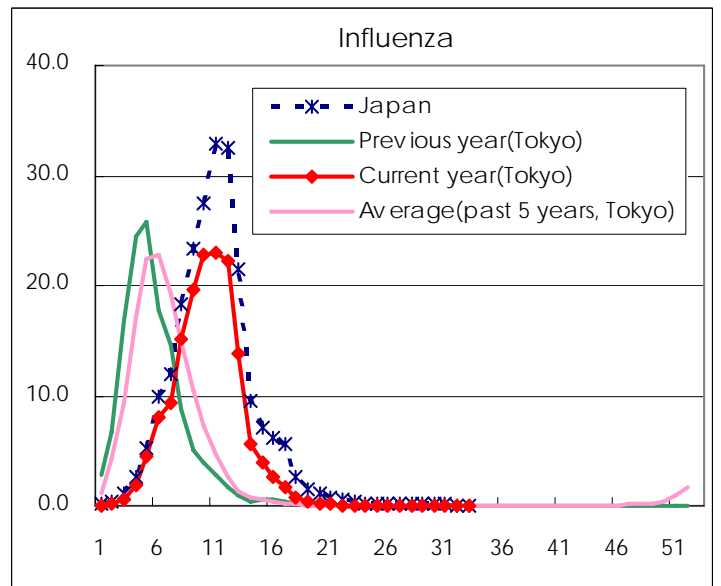
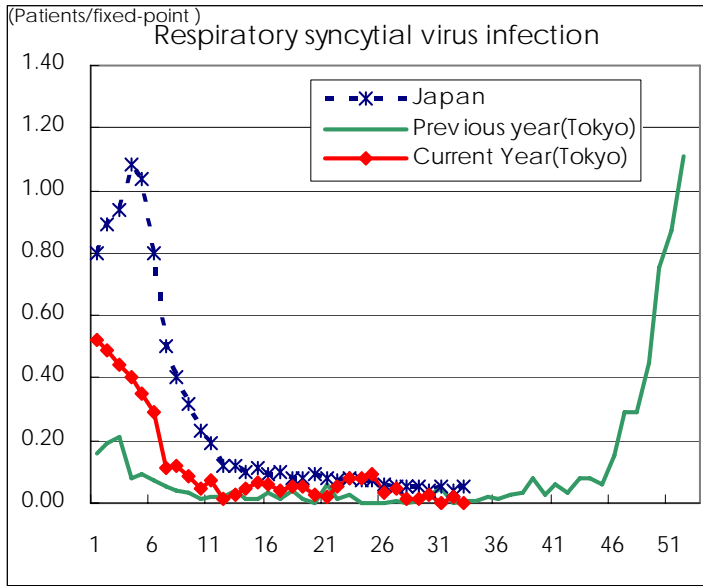
Category	Diseases	Tokyo					Japan	
		30th	31th	32th	33th	Cum 2007	33th	Cum 2007
V	Viral hepatitis(excluding hepatitis A and E)	1	2		1	27		140
	Acute encephalitis(excluding JE and WNE)		2		2	13		155
	Cryptosporidiosis							4
	Creutzfeldt-Jakob disease					8	1	97
	Severe invasive streptococcal infections(TSLs)				1	4		65
	Acquired immunodeficiency syndrome (AIDS)	8	12	7	12	317	11	907
	Giardiasis					10		32
	Meningococcal meningitis					1		12
	Congenital rubella syndrome							
	Syphilis	3	4	6	2	88	5	408
	Tetanus					1		59
	Vancomycin-resistant S. aureus infection							
	Vancomycin-resistant Enterococcus infection	1			1	11	1	44
designated	Influenza (H5N1)							

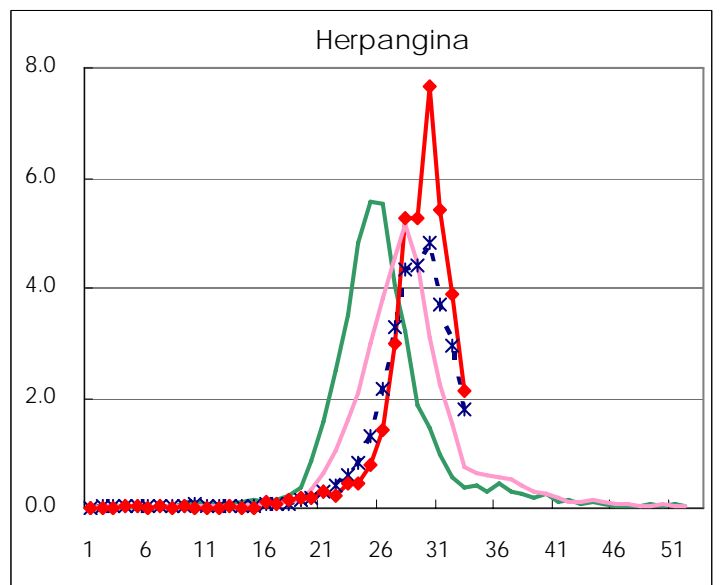
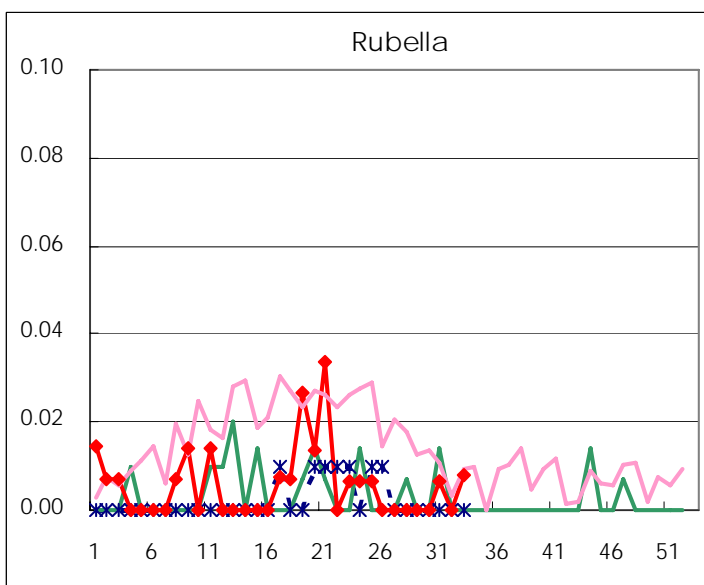
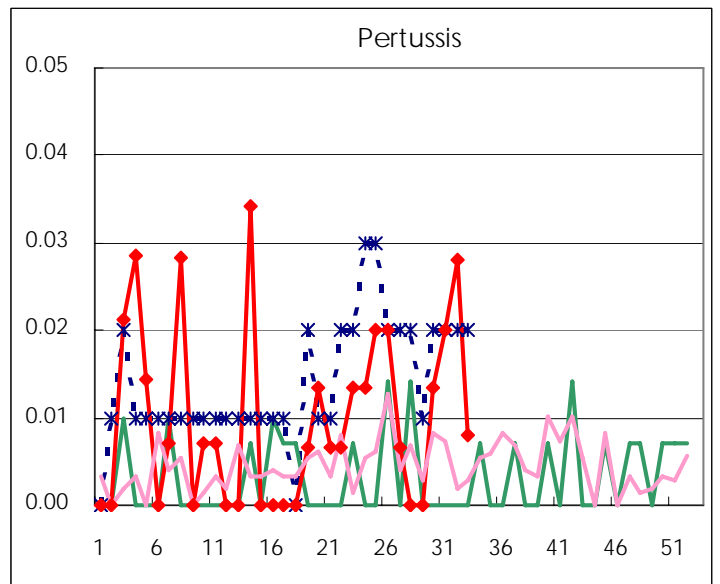
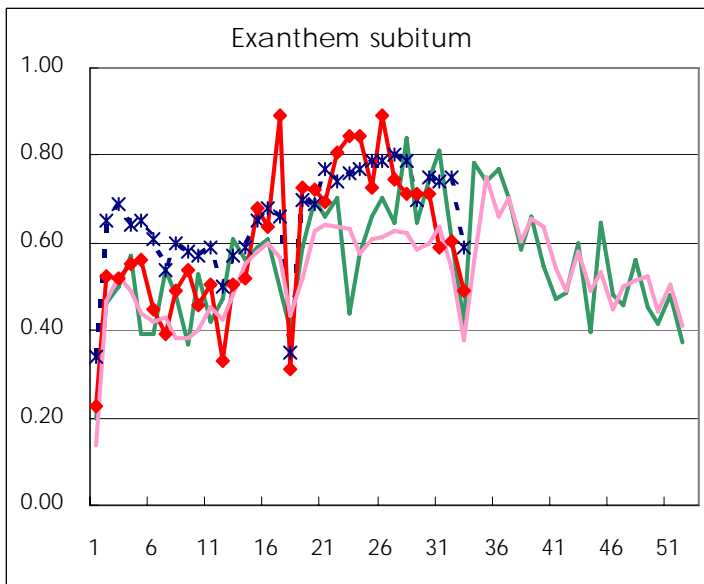
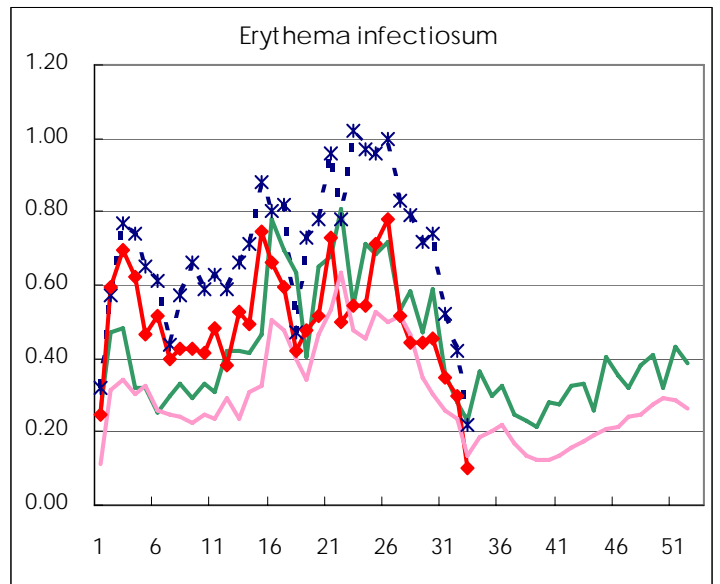
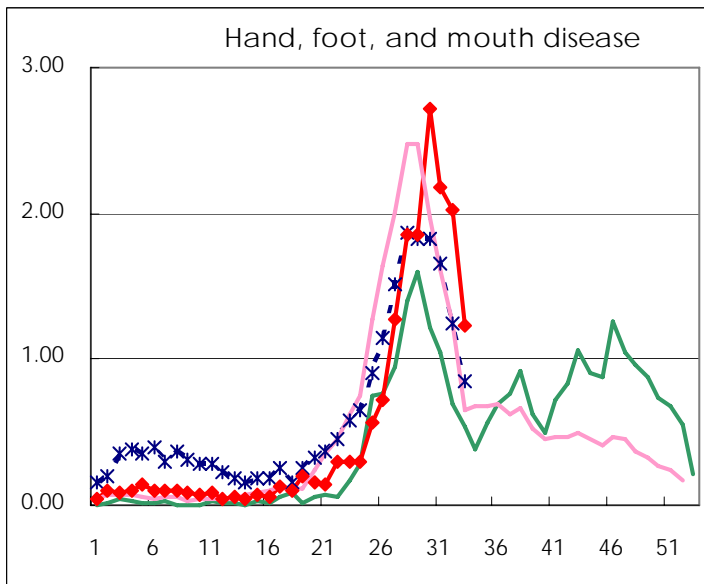
Number of patients with the diseases to be reported  
by the designated clinics and hospitals

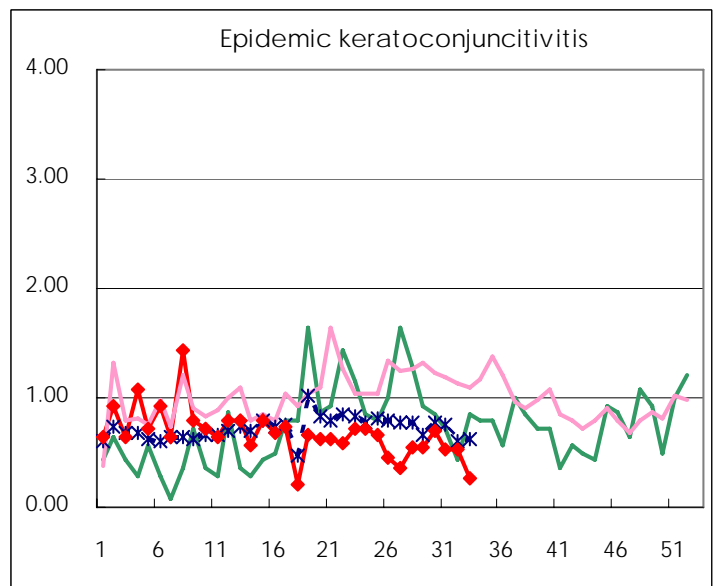
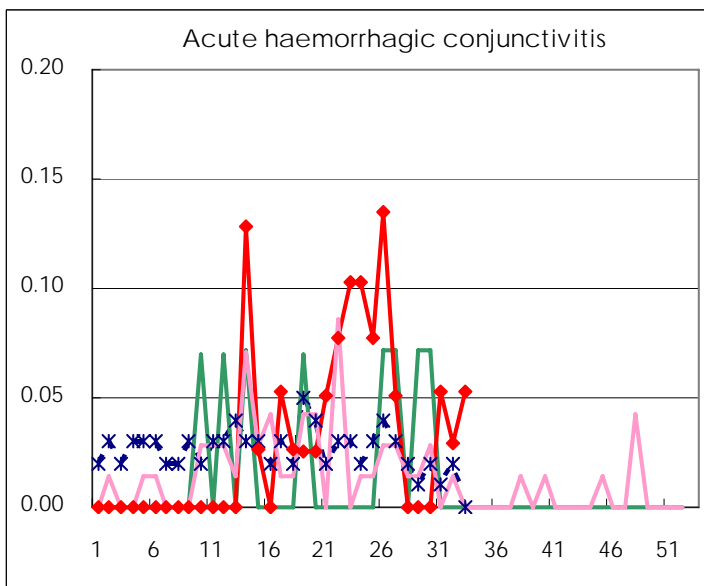
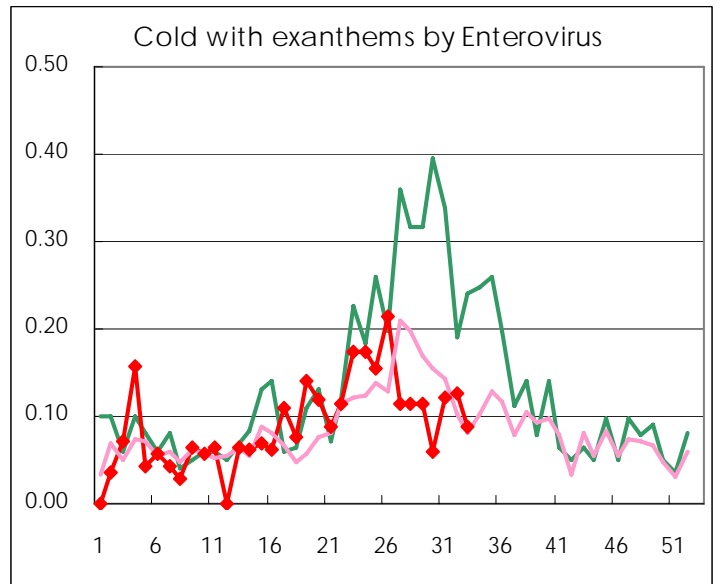
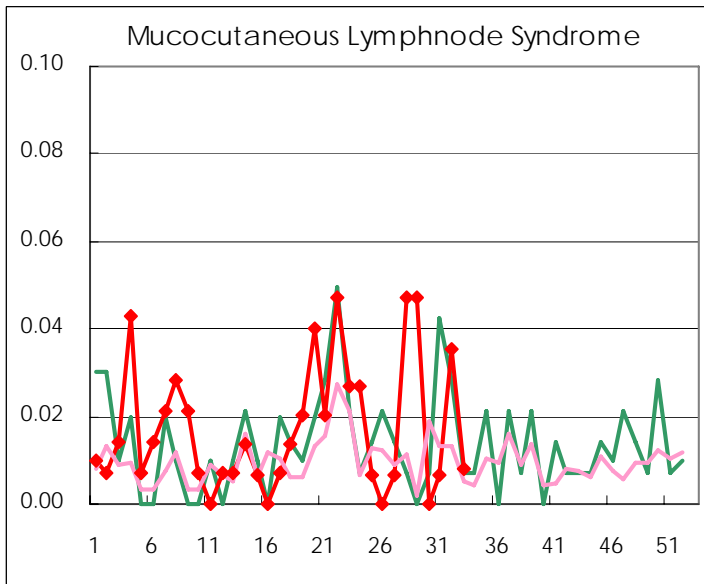
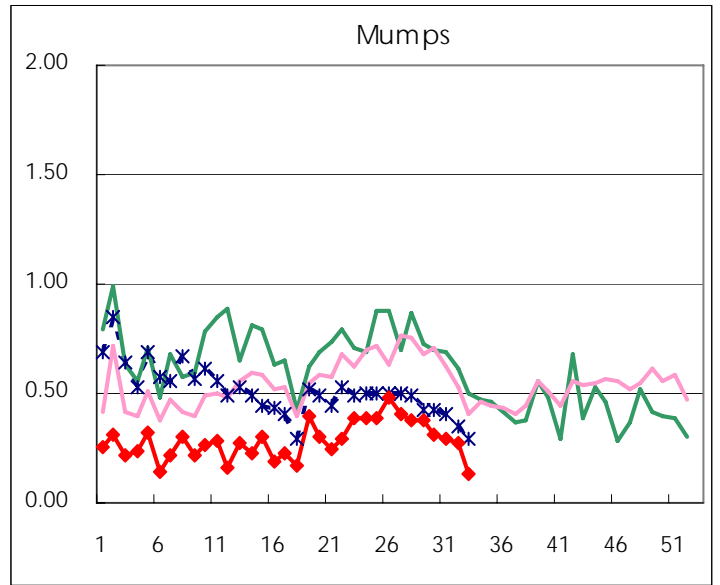
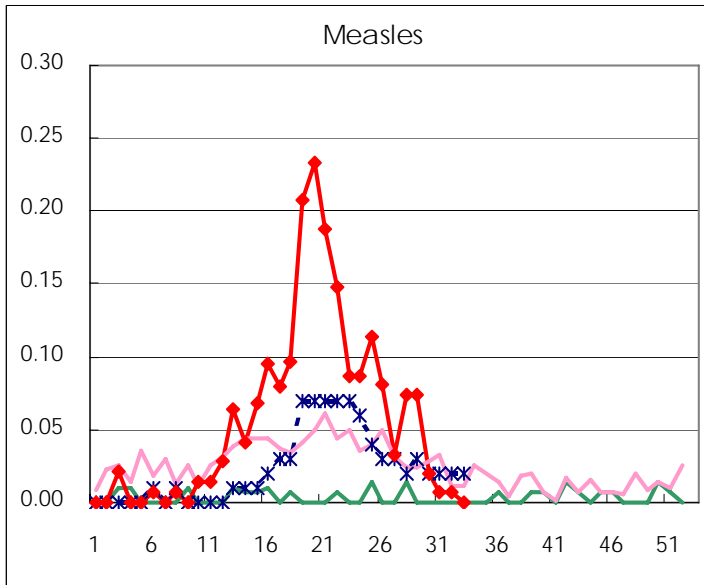
Diseases	2007				4wks total	Cum 2007
	30th	31th	32th	33th		
Respiratory syncytial virus infection	4		3		7	533
Influenza	2	4	1		7	43788
Pharyngoconjunctival fever	116	75	63	22	276	2182
Group A streptococcal pharyngitis	193	145	118	54	510	8279
Infectious gastroenteritis	552	449	414	289	1,704	24751
Chickenpox	89	110	67	49	315	6603
Hand, foot, and mouth disease	407	325	288	155	1,175	2620
Erythema infectiosum	68	52	42	13	175	2418
Exanthem subitum	107	88	86	62	343	2873
Pertussis	2	3	4	1	10	41
Rubella		1		1	2	27
Herpangina	1,149	807	552	268	2,776	5584
Measles	3	1	1		5	281
Mumps	46	44	39	17	146	1370
Cold with exanthems by Enterovirus	9	18	18	11	56	433
Mucocutaneous Lymphnode Syndrome		1	5	1	7	75
Acute hemorrhagic conjunctivitis		2	1	2	5	37
Epidemic keratoconjunctivitis	27	20	18	10	75	577
Bacterial meningitis	1				1	19
Aseptic meningitis	7	1	4	5	17	36
Mycoplasma pneumonia	12	5	3	3	23	119
Chlamydial pneumonia (excluding psittacosis)			1	1	2	9
Measles in adults	6	3	2	1	12	246

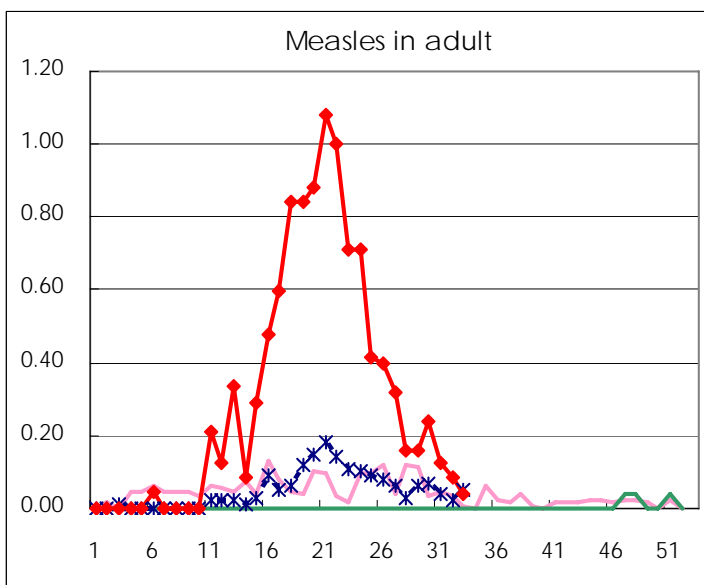
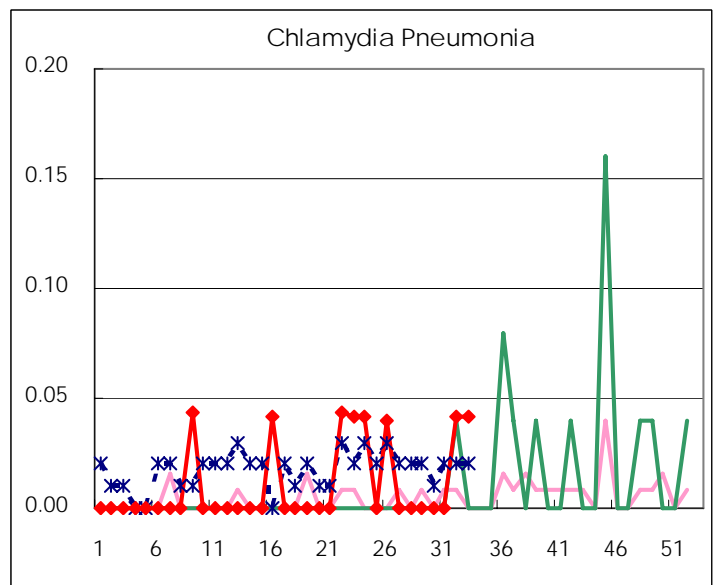
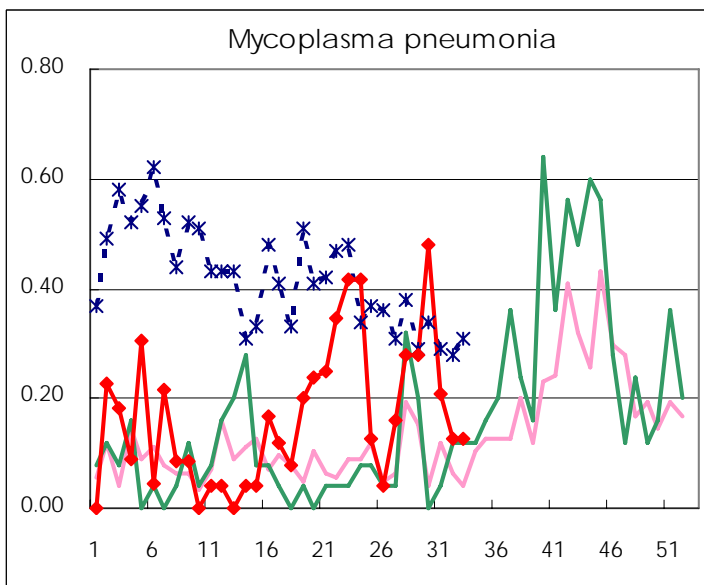
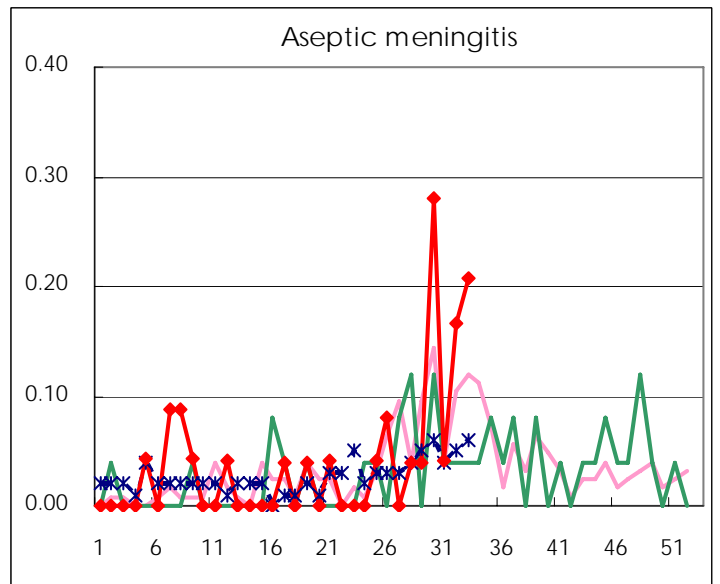
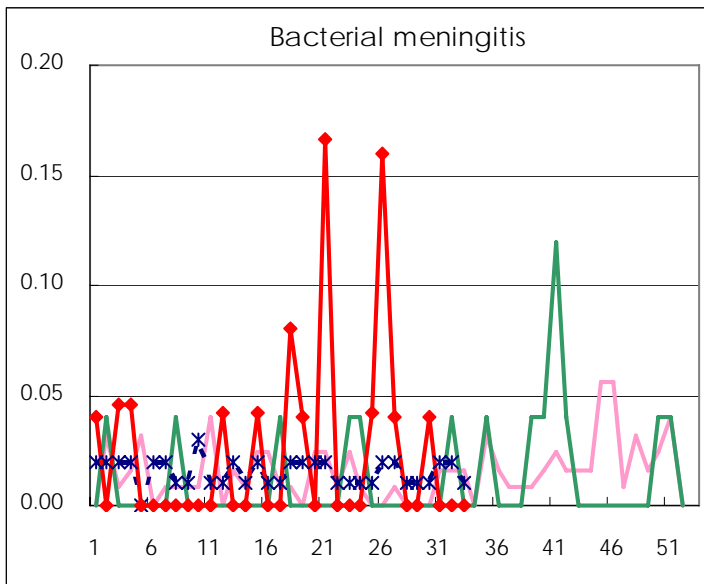
( Blank means 0. )

# Disease Trend Graph (weekly reported cases per fixed-point in comparison)









Number of sentinel facilities for weekly reporting		
Types of sentinels	Number of sentinels	Sentinels having reported
Pediatric	150	126
Influenza	290	249
Ophthalmic	39	38
Specially-designated	25	24

Tokyo Metropolitan Government  
Infectious Disease Surveillance Center