

---

INFECTIOUS DISEASES WEEKLY REPORT

# TOKYO IDWR

Tokyo Metropolitan Infectious Disease Surveillance Center

## 30 September 2007 / Number 34

### Surveillance System in Tokyo, Japan

#### The infectious diseases which all physicians must report

All physicians must report to health centers the incidence of the diseases which are shown at page one. Health centers electronically report the individual cases to Tokyo Metropolitan Infectious Disease Surveillance Center.

#### The infectious diseases required to be reported by the sentinels

The numbers of patients who visit the sentinel clinics or hospitals during a week are reported to health centers in Tokyo. And they electronically report the numbers to Tokyo Metropolitan Infectious Disease Surveillance Center. We have about 400 sentinel clinics and hospitals in Tokyo.

1st Week is early January and 52nd Week is end of December.

Tokyo Metropolitan Institute of Public Health  
Epidemiological Information Office

TEL:81-3-3363-3213 FAX:81-3-5332-7365

e-mail:[idsc@tokyo-eiken.go.jp](mailto:idsc@tokyo-eiken.go.jp)

URL:[idsc.tokyo-eiken.go.jp/](http://idsc.tokyo-eiken.go.jp/)

---

## Number of patients with the diseases which all physicians must report

Category	Diseases	Tokyo					Japan	
		32th	33th	34th	35th	Cum 2007	35th	Cum 2007
I	Ebola hemorrhagic fever							
	Crimean-Congo hemorrhagic fever							
	Smallpox							
	South American hemorrhagic fever							
	Plague							
	Marburg disease							
	Lassa fever							
II	Acute poliomyelitis							
	Tuberculosis	102	79	68	59	1559	274	8155
	Diphtheria							
	Severe Acute Respiratory Syndrome(SARS)							
III	Cholera					2		9
	Shigellosis		2	1	4	56	17	338
	Enterohemorrhagic Escherichia coli infection	21	9	8	9	353	181	2479
	Typhoid fever	1			1	7	2	26
	Paratyphoid fever					4		9
IV	Hepatitis E					2	1	39
	West Nile fever							
	Hepatitis A		1			15		106
	Echinococcosis	1				4		12
	Yellow fever							
	Psittacosis					1		23
	Omsk hemorrhagic fever							
	Relapsing fever							
	Kyasanur forest disease							
	Q fever							3
	Rabies							
	Coccidioidomycosis					2		3
	Monkeypox							
	Hemorrhagic fever with renal syndrome							
	Western equine encephalitis							
	Tick-borne encephalitis							
	Anthrax							
	Scrub typhus(Tsutsugamushi disease)					2		94
	Dengue fever				2	10	3	49
	Eastern equine encephalitis							
	Avian influenza virus infection							
	Nipah virus infection							
	Japanese spotted fever							31
	Japanese encephalitis							1
	Epidemic typhus							
	Hantavirus pulmonary syndrome							
	Herpes B virus infection							
	Glanders							
	Brucellosis							1
	Venezuelan equine encephalitis							
	Hendra virus infection							
	Botulism							2
	Malaria			1		15		29
Tularemia								
Lyme disease	1			1	2		4	
Lyssavirus infection(excluding rabies)								
Rift valley fever								
Melioidosis								
Legionellosis	2	4		1	33	9	398	
Leptospirosis					2		8	
Rocky mountain spotted fever								
Amebiasis	6	9	3	2	118	12	514	

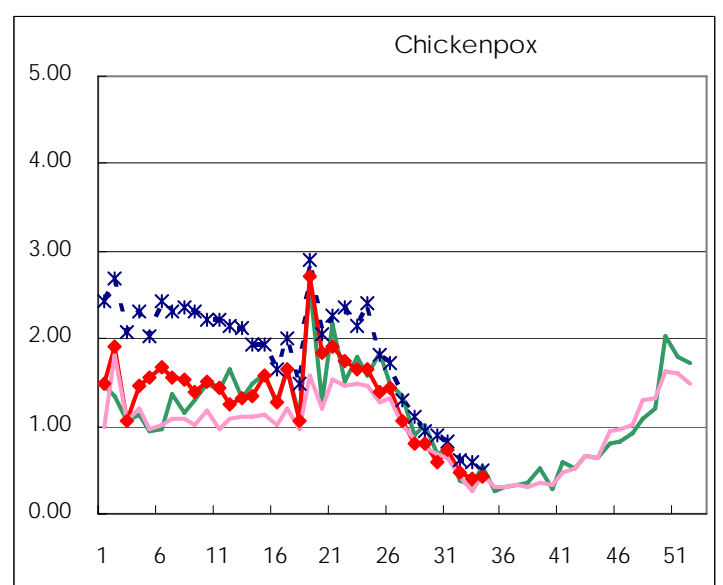
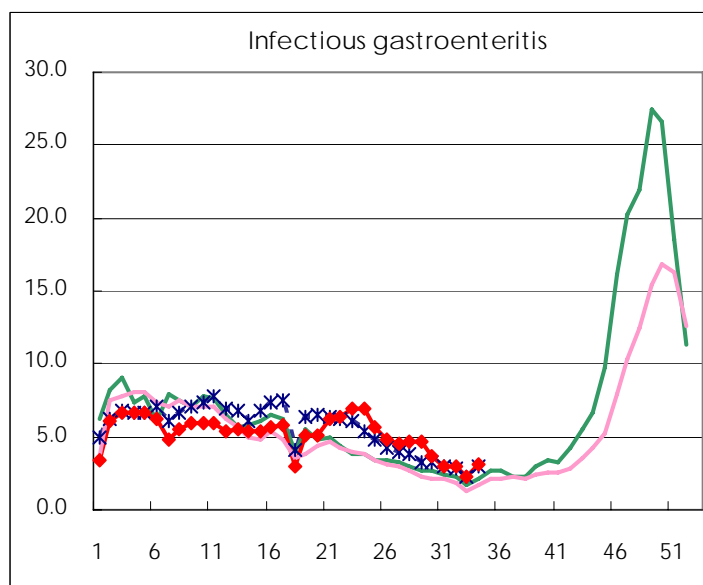
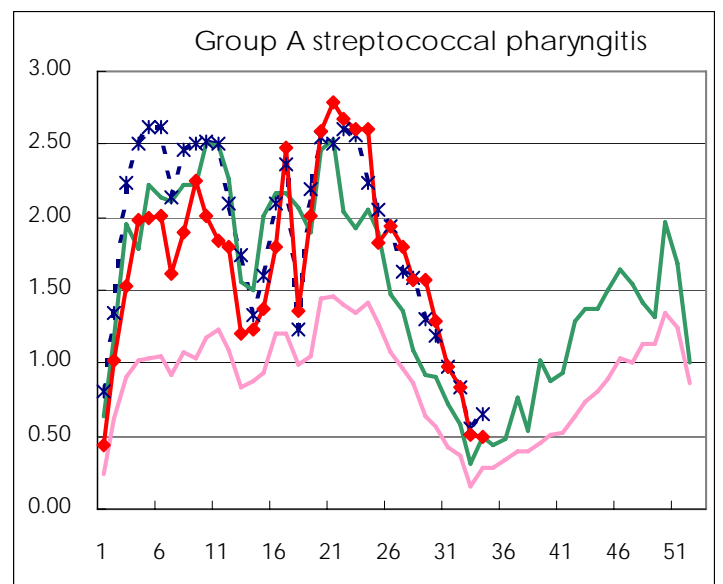
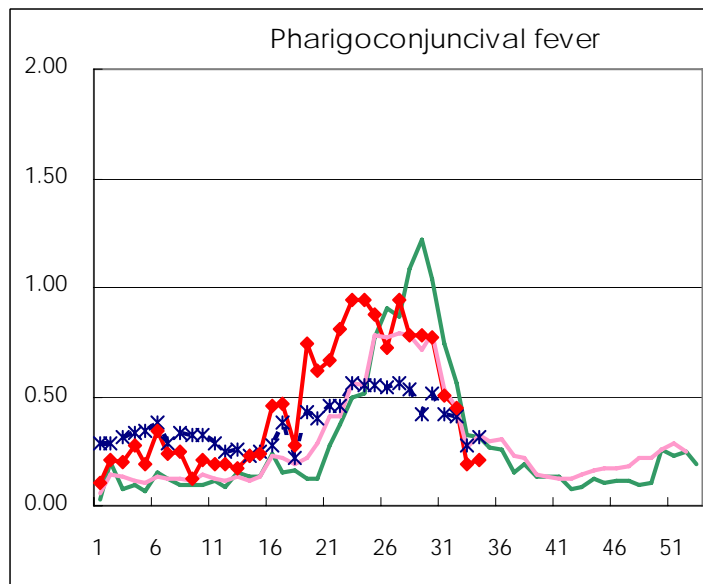
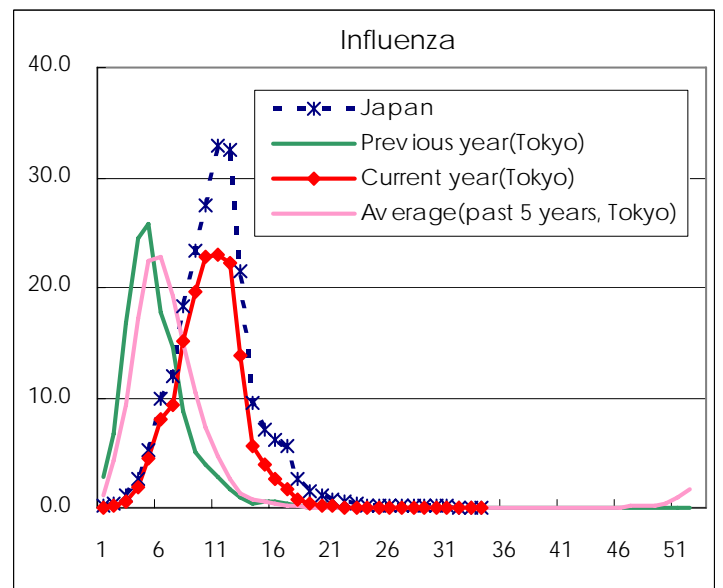
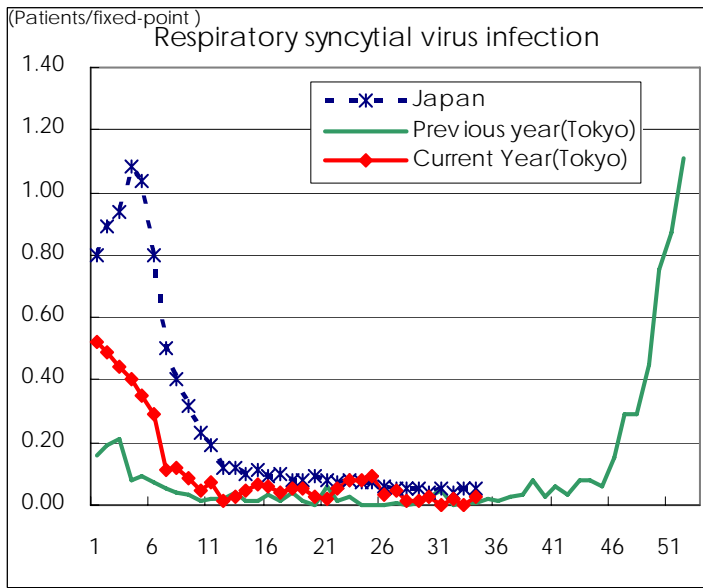
Category	Diseases	Tokyo				Japan		
		32th	33th	34th	35th	Cum 2007	35th	Cum 2007
V	Viral hepatitis(excluding hepatitis A and E)	2		1		27	7	149
	Acute encephalitis(excluding JE and WNE)	2		2	2	15	1	161
	Cryptosporidiosis				1	1	1	5
	Creutzfeldt-Jakob disease					8		97
	Severe invasive streptococcal infections(TSLs)					3	1	64
	Acquired immunodeficiency syndrome (AIDS)	12	7	12	5	322	14	935
	Giardiasis				1	11	1	33
	Meningococcal meningitis					1		12
	Congenital rubella syndrome							
	Syphilis	5	6	2	1	90	11	429
	Tetanus					1	3	62
	Vancomycin-resistant S. aureus infection							
	Vancomycin-resistant Enterococcus infection			1		11	2	46
designated	Influenza (H5N1)							

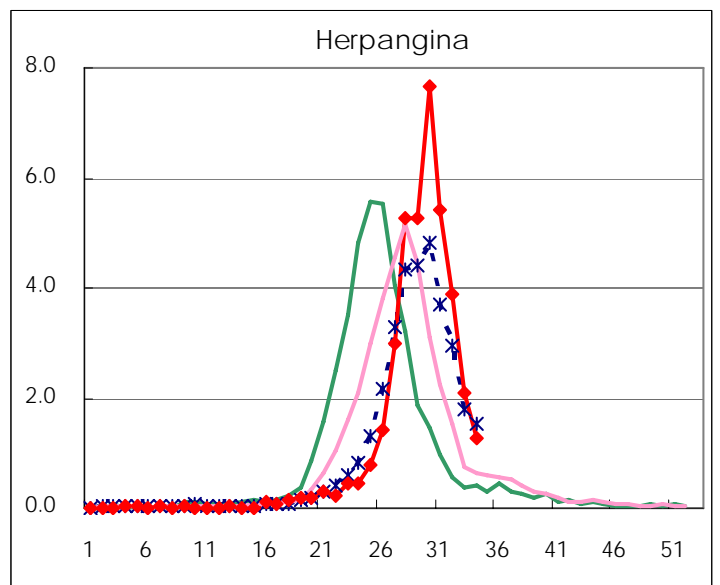
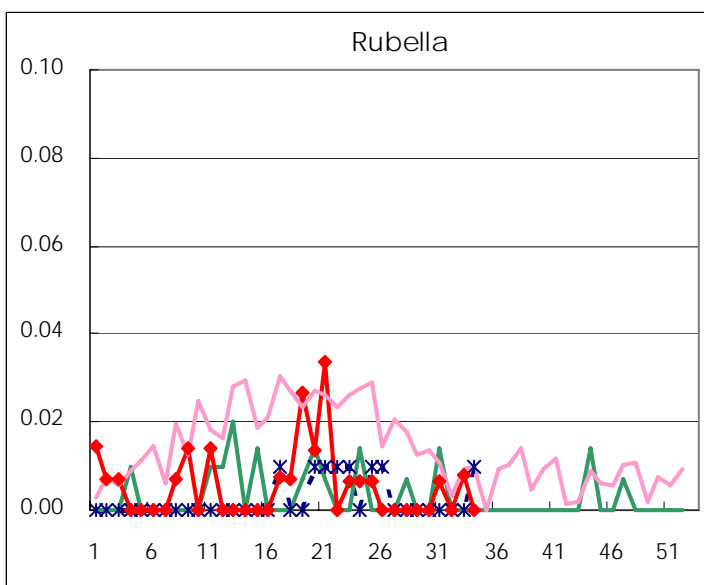
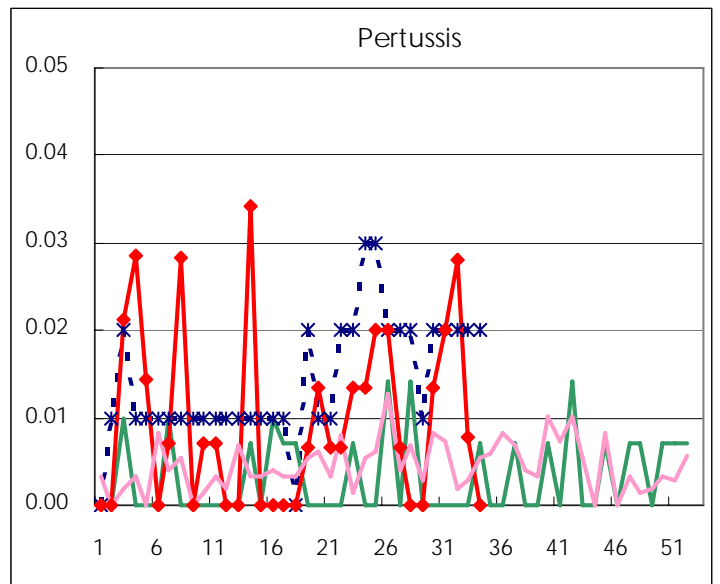
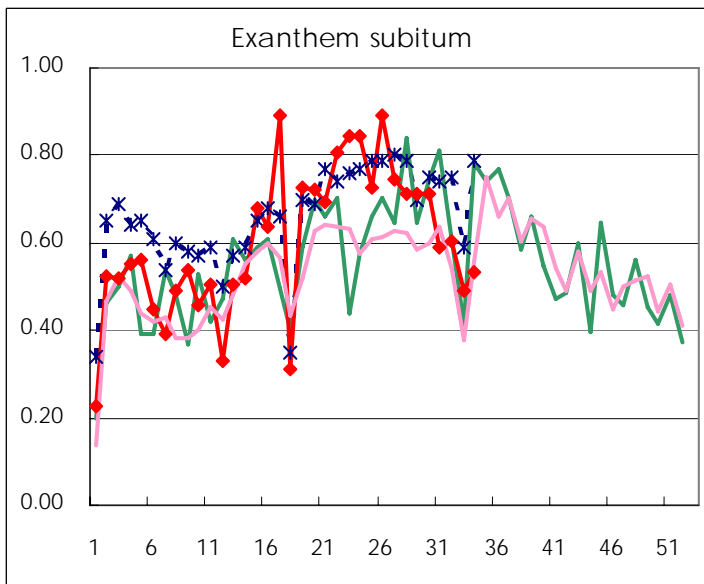
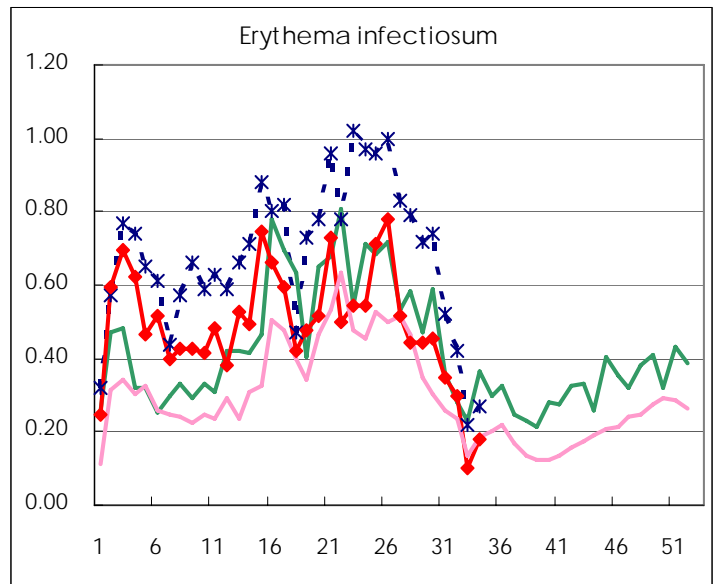
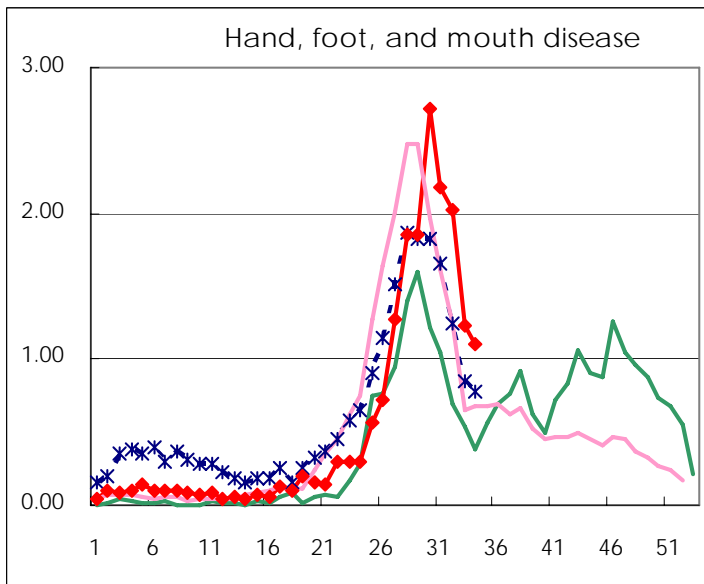
Number of patients with the diseases to be reported  
by the designated clinics and hospitals

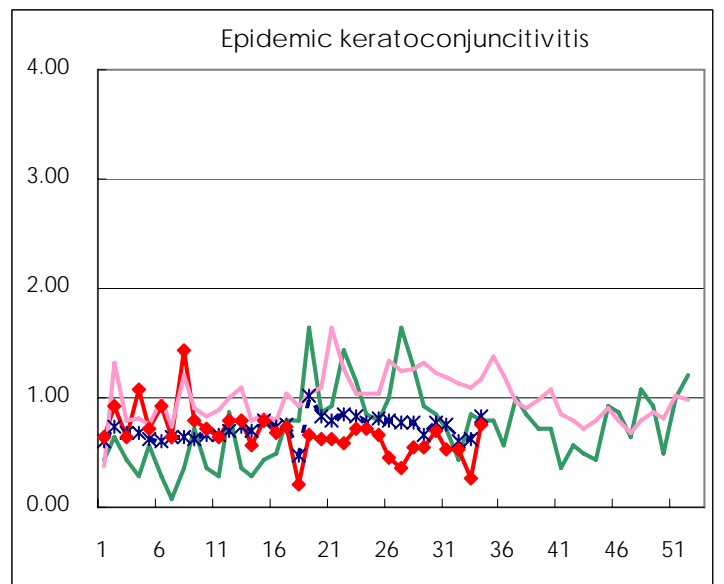
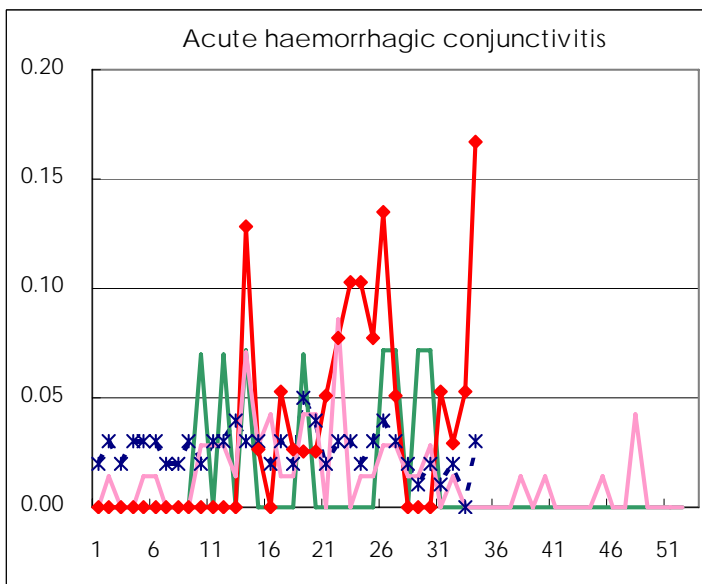
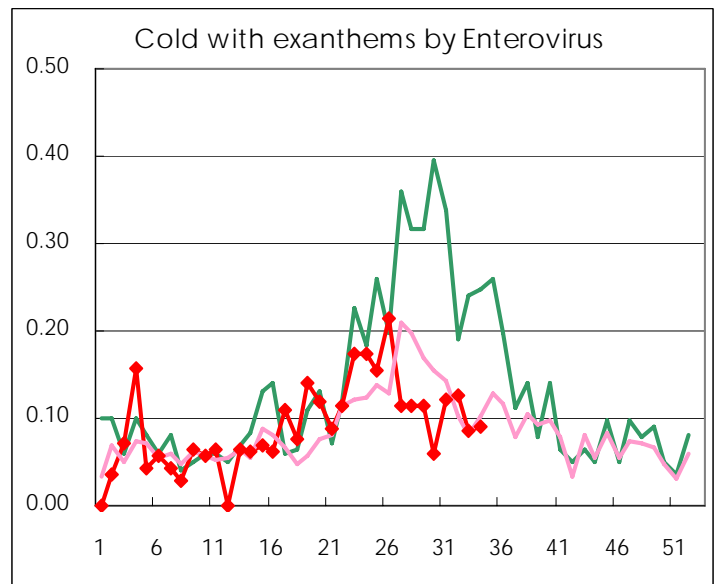
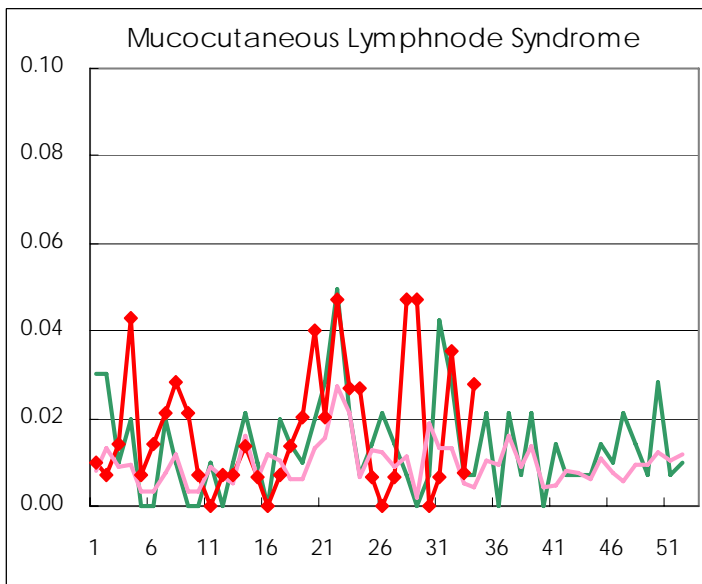
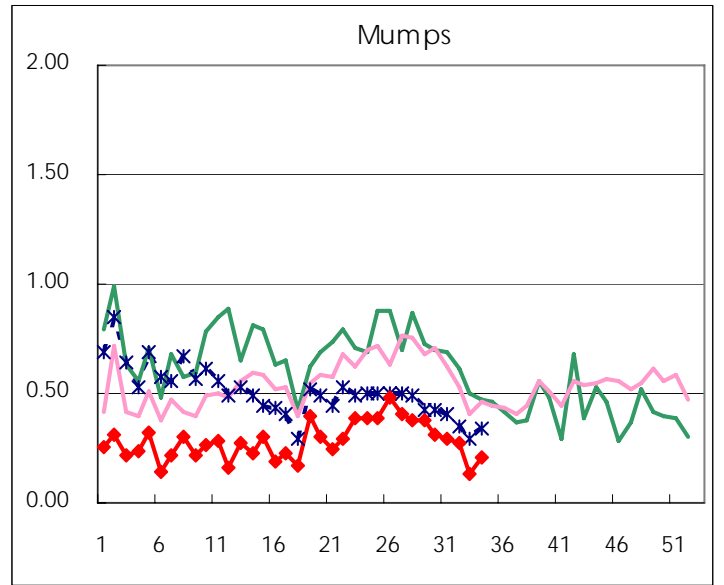
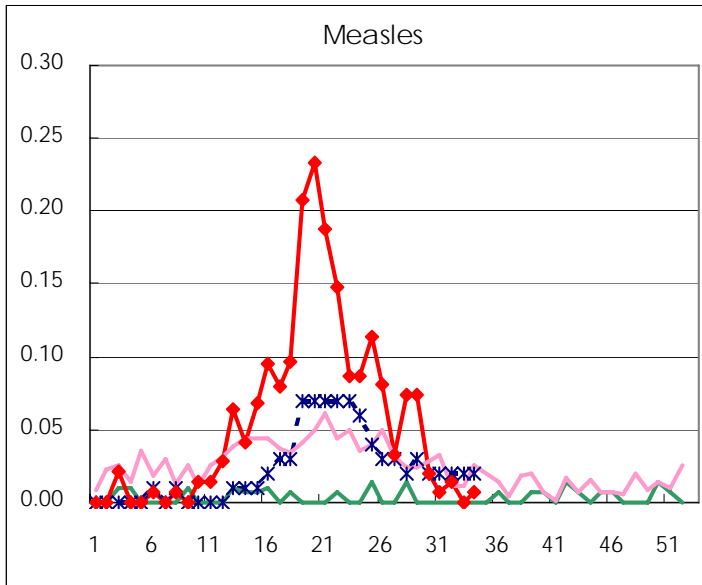
Diseases	2007				4wks total	Cum 2007
	32th	33th	34th	35th		
Respiratory syncytial virus infection		3		4	7	537
Influenza	4	1			5	43788
Pharyngoconjunctival fever	75	63	25	30	193	2215
Group A streptococcal pharyngitis	145	118	65	71	399	8361
Infectious gastroenteritis	449	414	295	446	1,604	25203
Chickenpox	110	67	51	61	289	6666
Hand, foot, and mouth disease	325	288	158	157	928	2780
Erythema infectiosum	52	42	13	26	133	2444
Exanthem subitum	88	86	63	76	313	2950
Pertussis	3	4	1		8	41
Rubella	1		1		2	27
Herpangina	807	552	268	180	1,807	5764
Measles	1	2		1	4	283
Mumps	44	39	17	30	130	1400
Cold with exanthems by Enterovirus	18	18	11	13	60	446
Mucocutaneous Lymphnode Syndrome	1	5	1	4	11	79
Acute hemorrhagic conjunctivitis	2	1	2	6	11	43
Epidemic keratoconjunctivitis	20	18	10	27	75	604
Bacterial meningitis						19
Aseptic meningitis	1	4	5	2	12	38
Mycoplasma pneumonia	5	3	3	3	14	122
Chlamydial pneumonia (excluding psittacosis)		1	1	1	3	10
Measles in adults	3	2	1		6	246

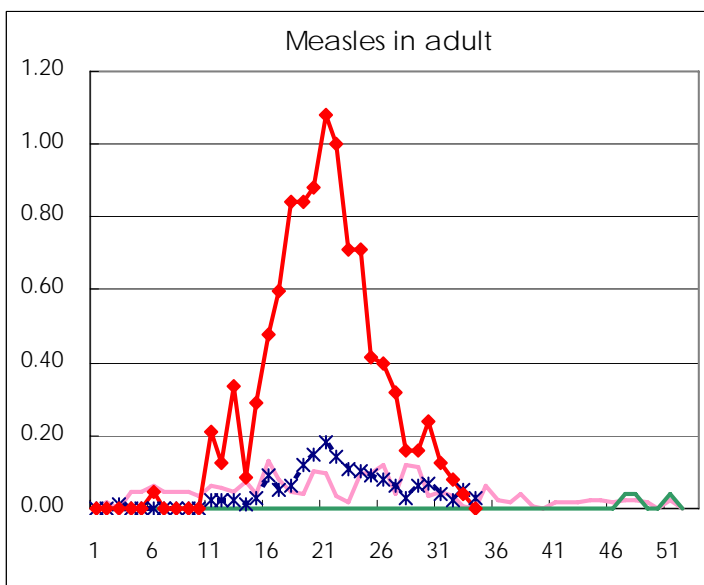
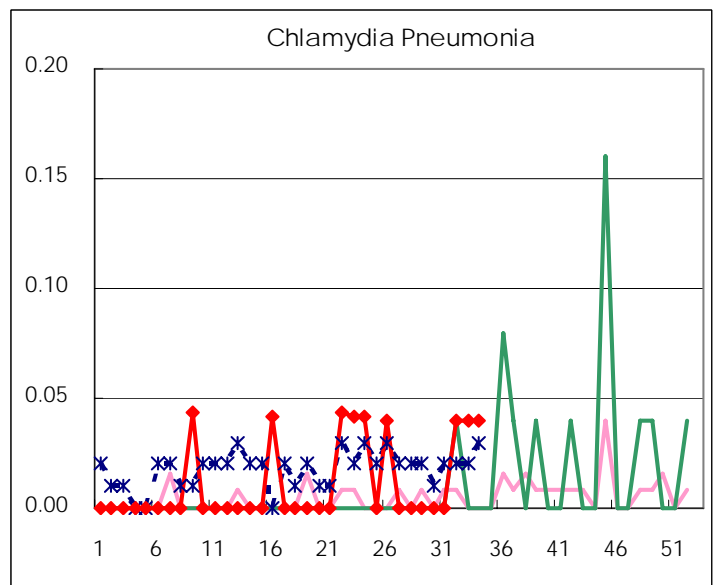
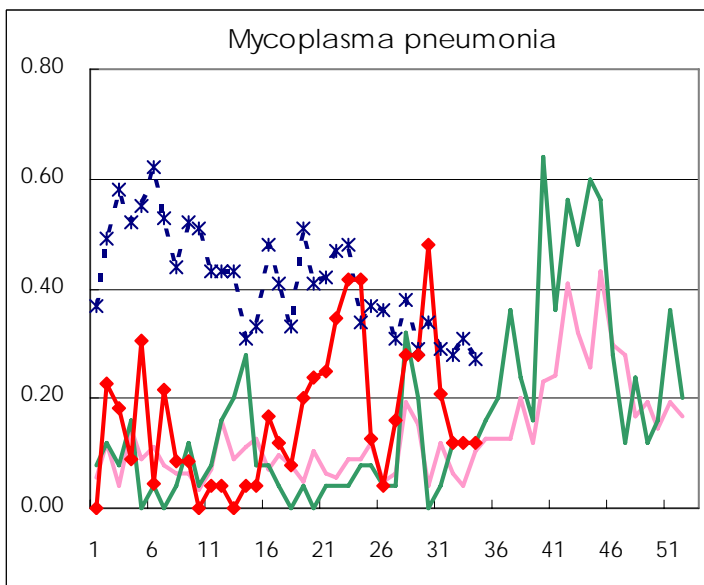
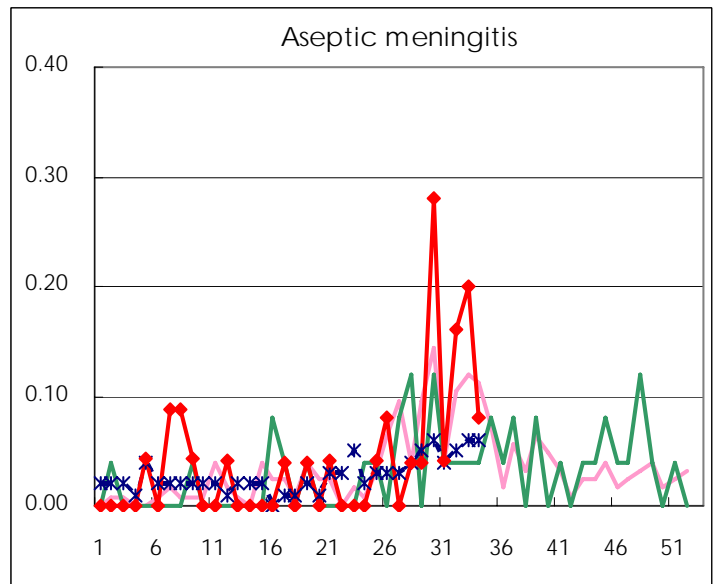
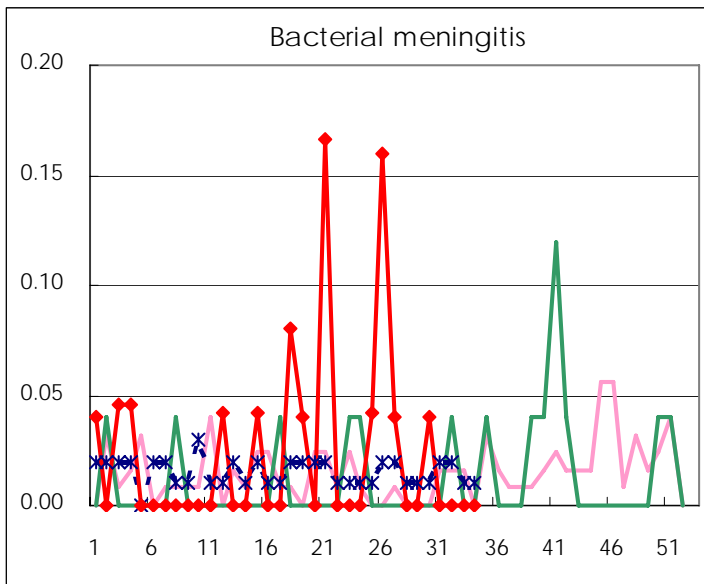
( Blank means 0. )

# Disease Trend Graph (weekly reported cases per fixed-point in comparison)









Number of sentinel facilities for weekly reporting		
Types of sentinels	Number of sentinels	Sentinels having reported
Pediatric	150	143
Influenza	290	279
Ophthalmic	39	36
Specially-designated	25	25

Tokyo Metropolitan Government  
Infectious Disease Surveillance Center