

---

INFECTIOUS DISEASES WEEKLY REPORT

# TOKYO IDWR

Tokyo Metropolitan Infectious Disease Surveillance Center

## 6 September 2007 / Number 35

### Surveillance System in Tokyo, Japan

The infectious diseases which all physicians must report

All physicians must report to health centers the incidence of the diseases which are shown at page one. Health centers electronically report the individual cases to Tokyo Metropolitan Infectious Disease Surveillance Center.

The infectious diseases required to be reported by the sentinels

The numbers of patients who visit the sentinel clinics or hospitals during a week are reported to health centers in Tokyo. And they electronically report the numbers to Tokyo Metropolitan Infectious Disease Surveillance Center. We have about 400 sentinel clinics and hospitals in Tokyo.

1st Week is early January and 52nd Week is end of December.

Tokyo Metropolitan Institute of Public Health  
Epidemiological Information Office

TEL:81-3-3363-3213 FAX:81-3-5332-7365

e-mail:[idsc@tokyo-eiken.go.jp](mailto:idsc@tokyo-eiken.go.jp)

URL:[idsc.tokyo-eiken.go.jp/](http://idsc.tokyo-eiken.go.jp/)

---

## Number of patients with the diseases which all physicians must report

Category	Diseases	Tokyo					Japan	
		33th	34th	35th	36th	Cum 2007	36th	Cum 2007
I	Ebola hemorrhagic fever							
	Crimean-Congo hemorrhagic fever							
	Smallpox							
	South American hemorrhagic fever							
	Plague							
	Marburg disease							
	Lassa fever							
II	Acute poliomyelitis							
	Tuberculosis	80	72	72	50	1628	259	8616
	Diphtheria							
	Severe Acute Respiratory Syndrome(SARS)							
III	Cholera					2	1	10
	Shigellosis	2	1	5	2	59	11	349
	Enterohemorrhagic Escherichia coli infection	9	8	9	9	362	228	2784
	Typhoid fever			1	1	8	1	26
	Paratyphoid fever					4		10
IV	Hepatitis E					2		39
	West Nile fever							
	Hepatitis A	1				15	1	108
	Echinococcosis					4		12
	Yellow fever							
	Psittacosis					1	1	23
	Omsk hemorrhagic fever							
	Relapsing fever							
	Kyasanur forest disease							
	Q fever							3
	Rabies							
	Coccidioidomycosis					2		3
	Monkeypox							
	Hemorrhagic fever with renal syndrome							
	Western equine encephalitis							
	Tick-borne encephalitis							
	Anthrax							
	Scrub typhus(Tsutsugamushi disease)					2		95
	Dengue fever			2	3	13	1	51
	Eastern equine encephalitis							
	Avian influenza virus infection							
	Nipah virus infection							
	Japanese spotted fever						5	37
	Japanese encephalitis							1
	Epidemic typhus							
	Hantavirus pulmonary syndrome							
	Herpes B virus infection							
	Glanders							
	Brucellosis							1
	Venezuelan equine encephalitis							
	Hendra virus infection							
	Botulism							2
	Malaria		1				15	3
Tularemia								
Lyme disease			1			2		4
Lyssavirus infection(excluding rabies)								
Rift valley fever								
Melioidosis								
Legionellosis	4		1	1	34	5	402	
Leptospirosis					2	2	10	
Rocky mountain spotted fever								
Amebiasis	9	3	2	4	122	12	531	

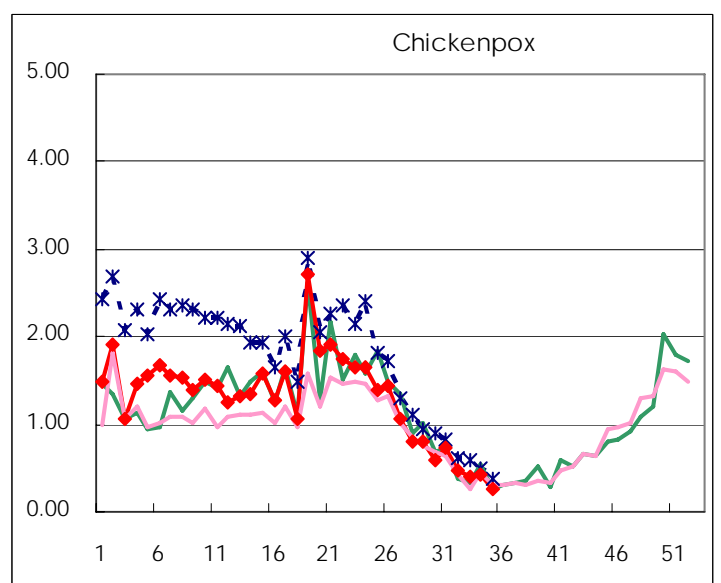
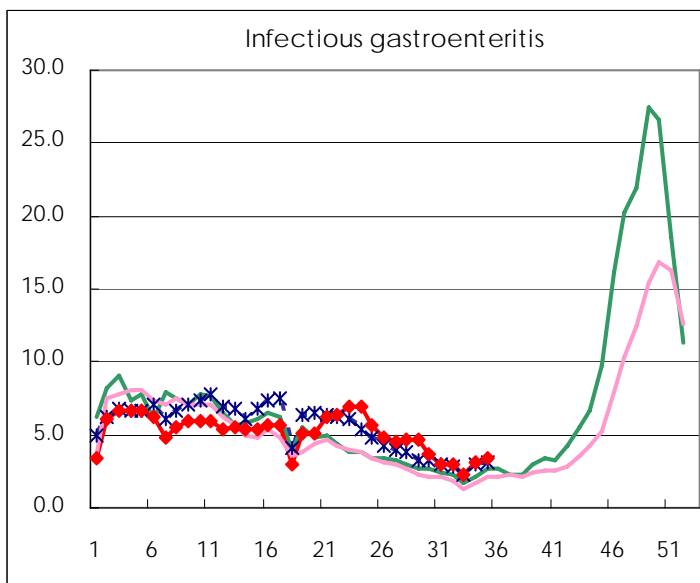
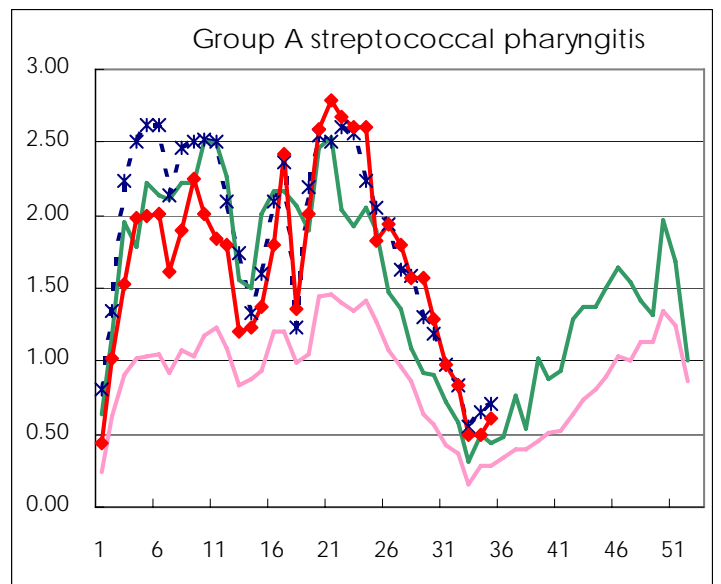
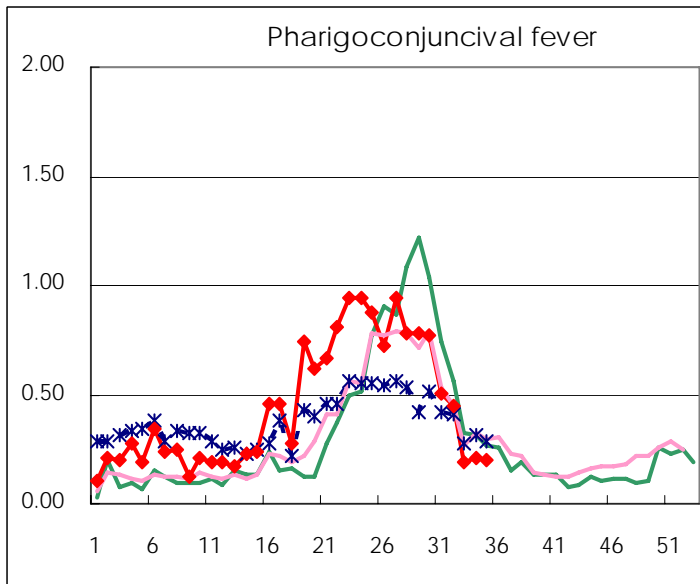
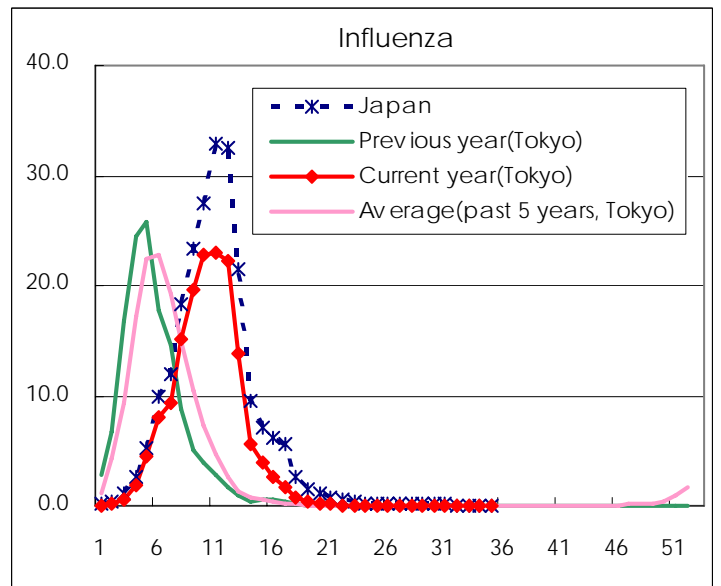
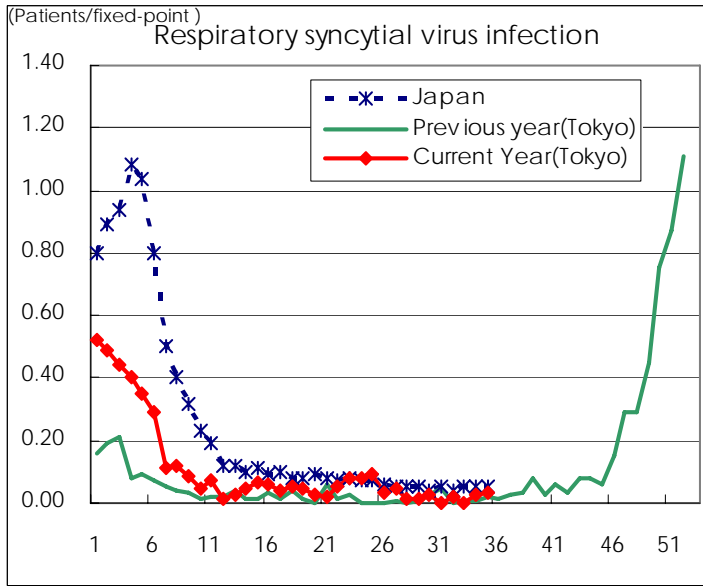
Category	Diseases	Tokyo				Japan		
		33th	34th	35th	36th	Cum 2007	36th	Cum 2007
V	Viral hepatitis(excluding hepatitis A and E)		1		1	28	2	155
	Acute encephalitis(excluding JE and WNE)		2	2		15		160
	Cryptosporidiosis			1		1		5
	Creutzfeldt-Jakob disease					8		97
	Severe invasive streptococcal infections(TSLS)				1	4	1	68
	Acquired immunodeficiency syndrome (AIDS)	7	12	5	11	333	14	961
	Giardiasis			1		11	2	34
	Meningococcal meningitis					1		12
	Congenital rubella syndrome							
	Syphilis	6	2	1	6	96	7	446
	Tetanus					1	2	64
	Vancomycin-resistant S. aureus infection							
	Vancomycin-resistant Enterococcus infection		1			11		48
designated	Influenza (H5N1)							

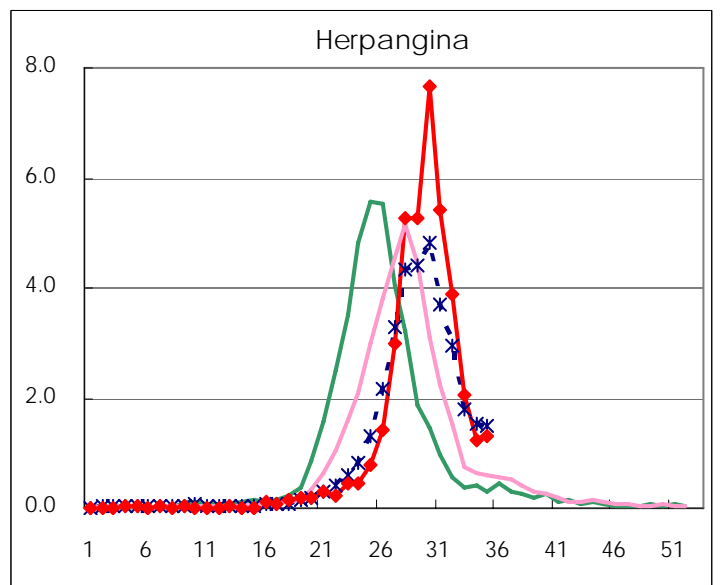
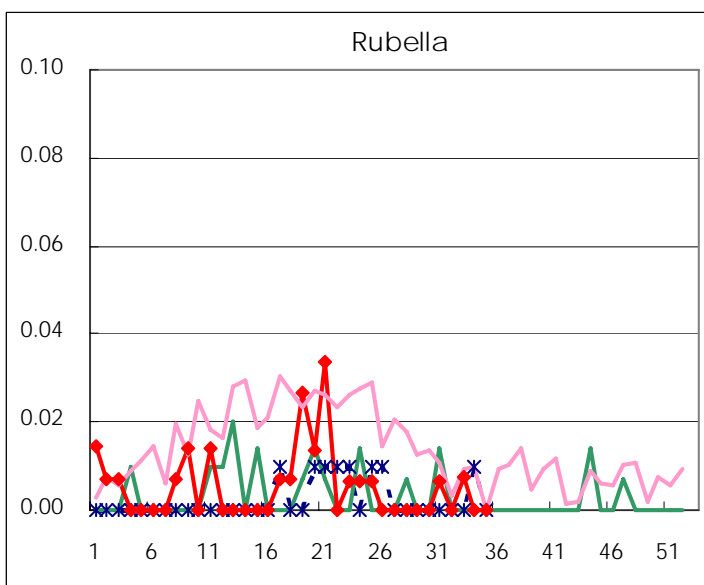
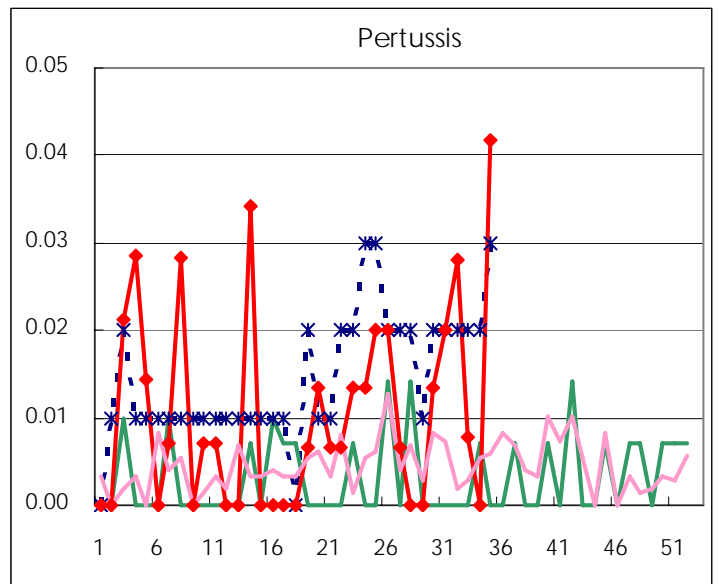
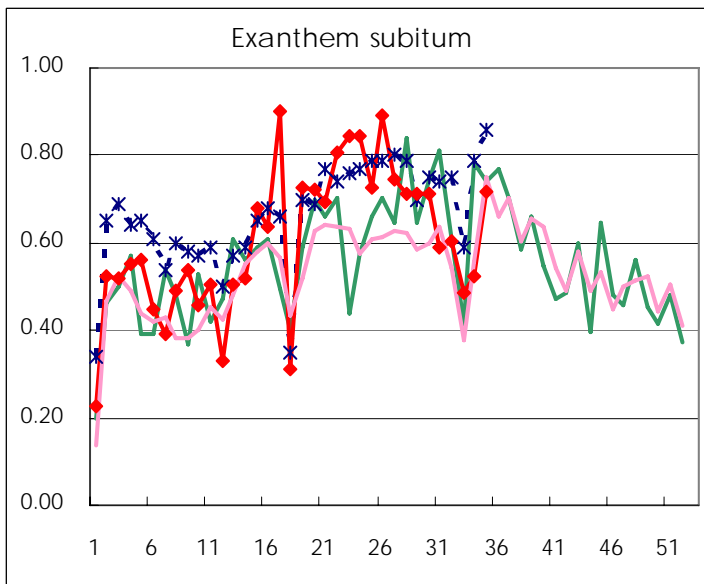
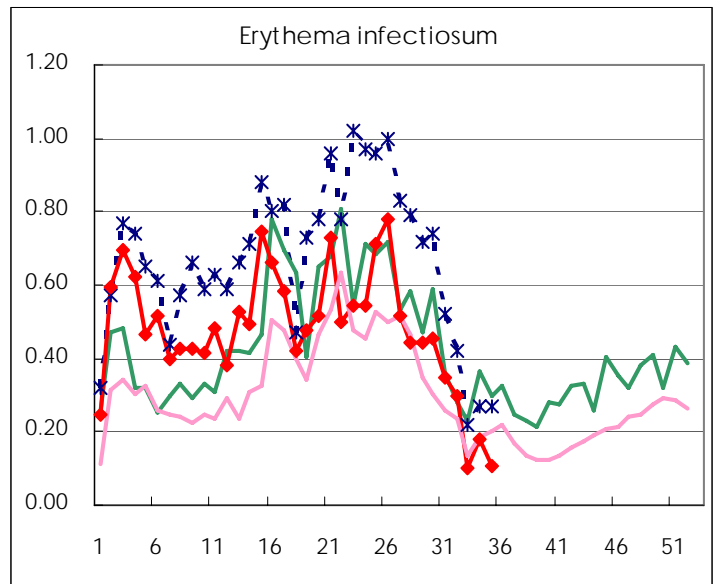
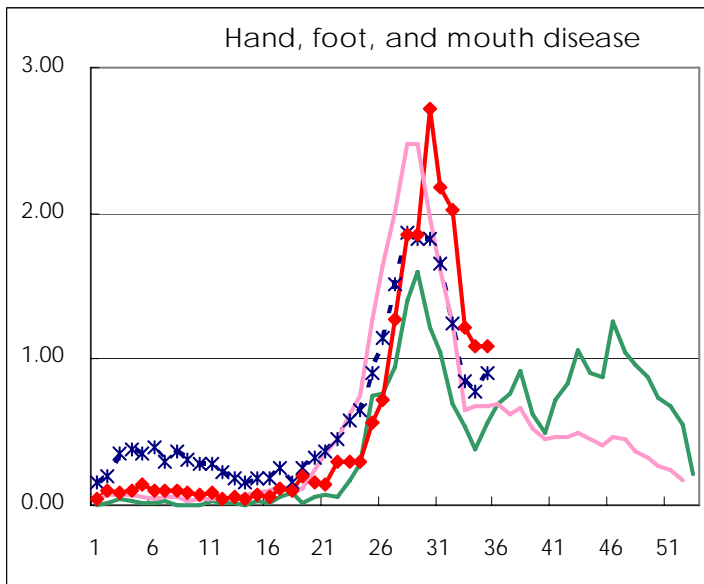
Number of patients with the diseases to be reported  
by the designated clinics and hospitals

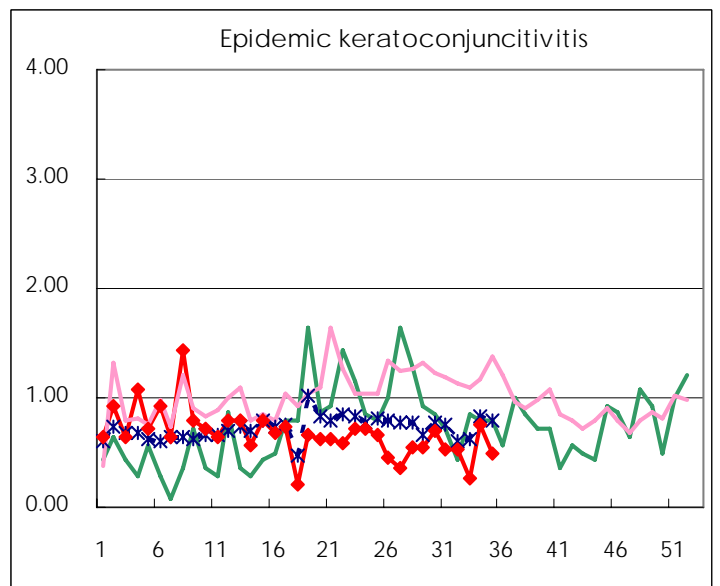
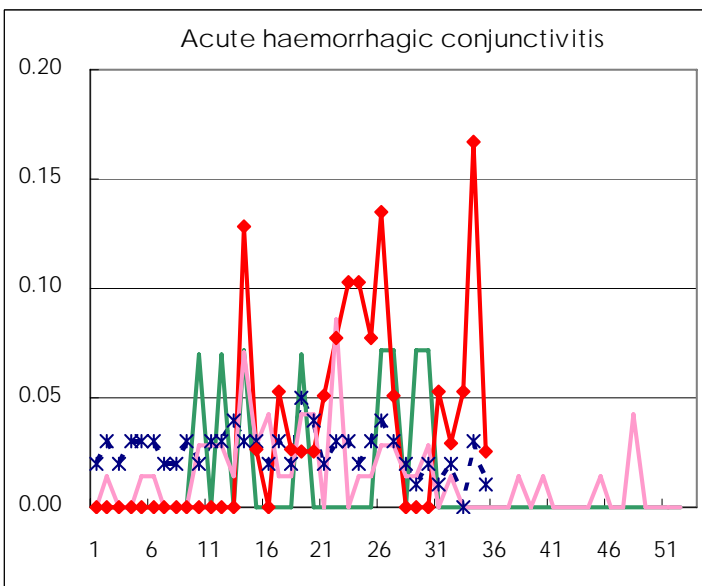
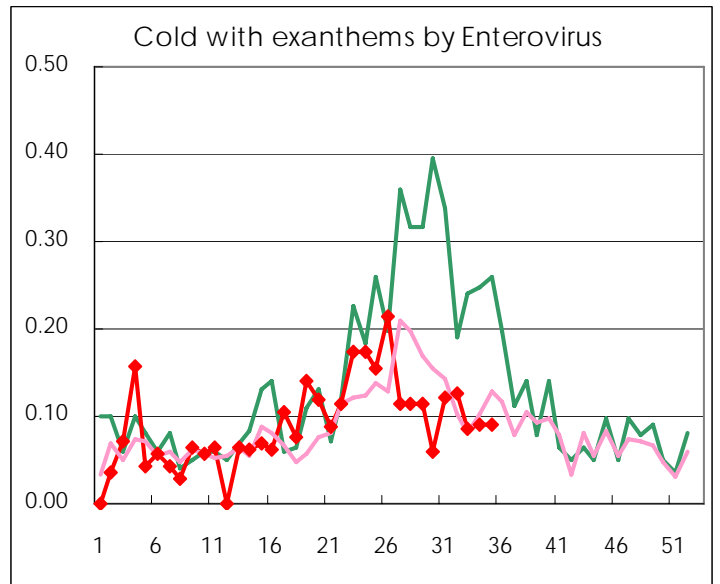
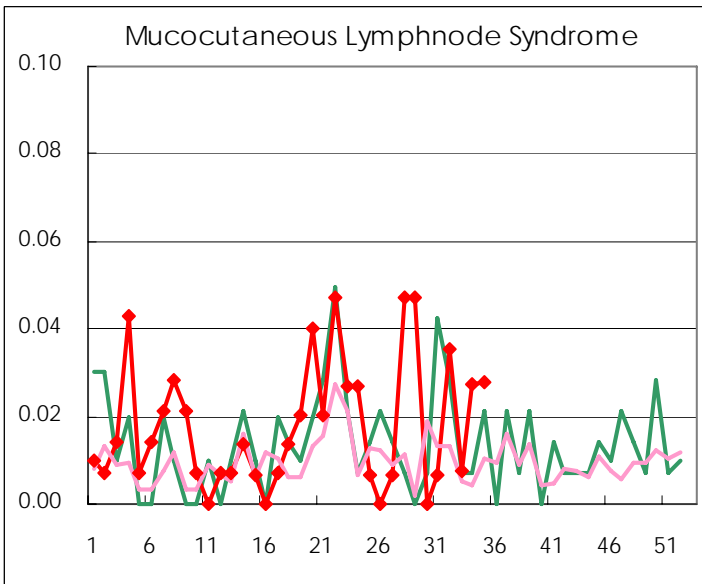
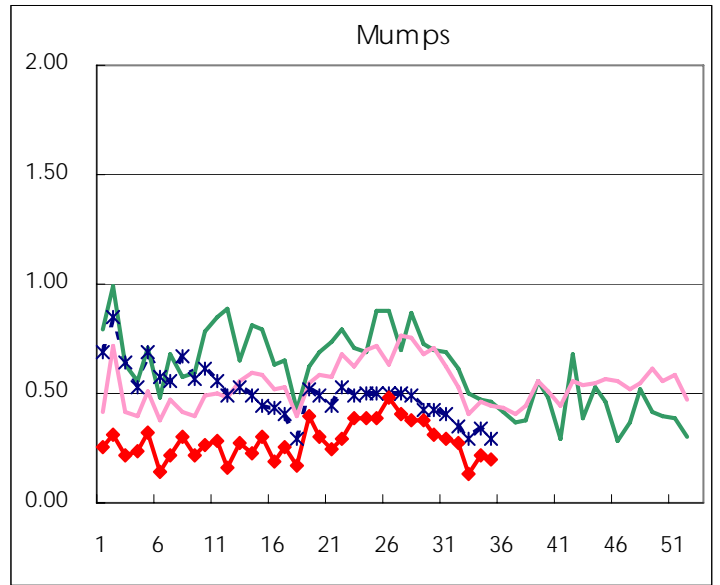
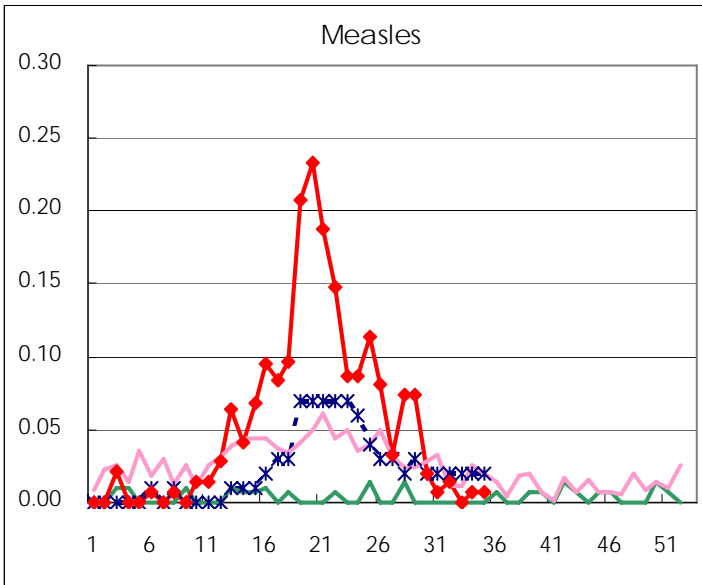
Diseases	2007				4wks total	Cum 2007
	33th	34th	35th	36th		
Respiratory syncytial virus infection	3		4	5	12	542
Influenza	1			3	4	43791
Pharyngoconjunctival fever	63	25	30	29	147	2244
Group A streptococcal pharyngitis	118	65	72	88	343	8450
Infectious gastroenteritis	414	295	454	482	1,645	25693
Chickenpox	67	51	61	37	216	6703
Hand, foot, and mouth disease	288	158	157	156	759	2936
Erythema infectiosum	42	13	26	15	96	2459
Exanthem subitum	86	63	76	103	328	3053
Pertussis	4	1		6	11	47
Rubella		1			1	27
Herpangina	552	268	181	191	1,192	5956
Measles	2		1	1	4	284
Mumps	39	17	32	28	116	1430
Cold with exanthems by Enterovirus	18	11	13	13	55	459
Mucocutaneous Lymphnode Syndrome	5	1	4	4	14	83
Acute hemorrhagic conjunctivitis	1	2	6	1	10	44
Epidemic keratoconjunctivitis	18	10	27	19	74	623
Bacterial meningitis						20
Aseptic meningitis	4	5	2	3	14	41
Mycoplasma pneumonia	3	3	3	1	10	123
Chlamydial pneumonia (excluding psittacosis)	1	1	1	1	4	11
Measles in adults	2	1		2	5	251

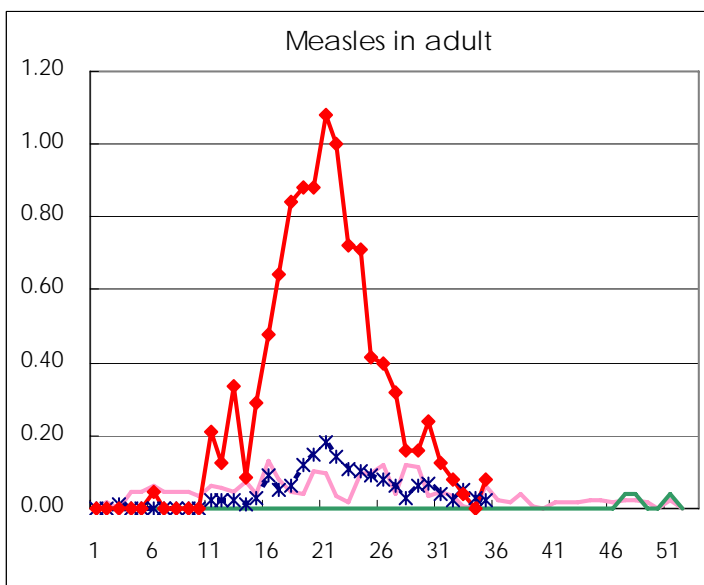
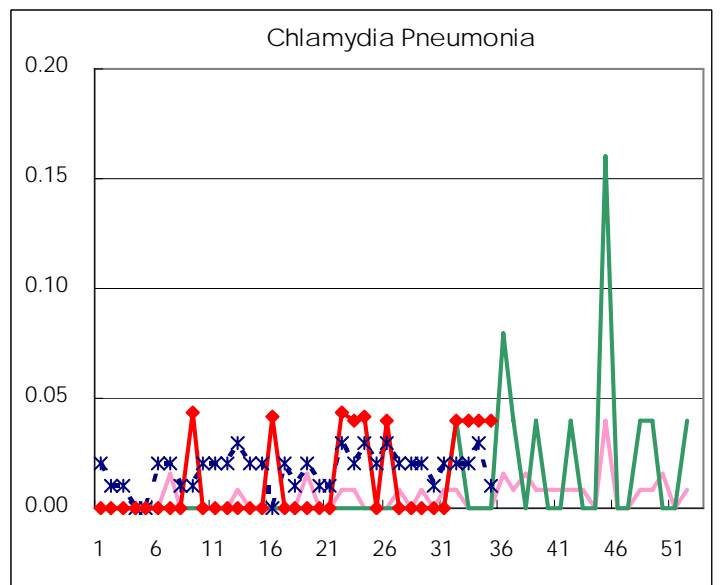
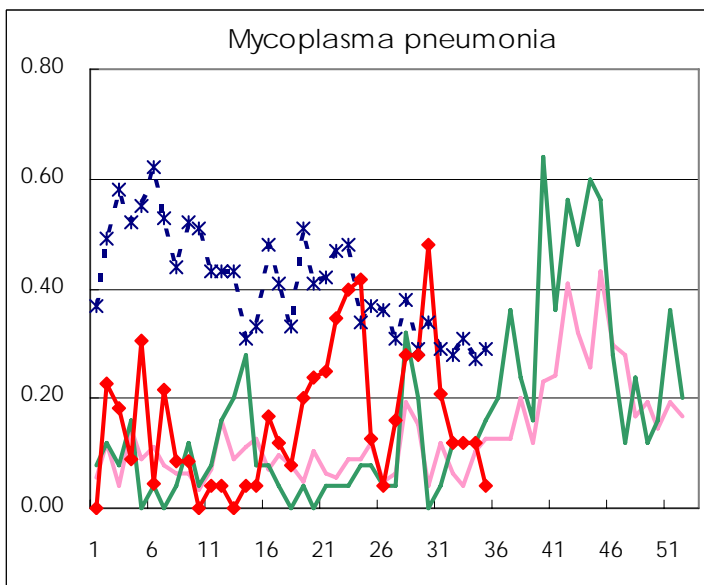
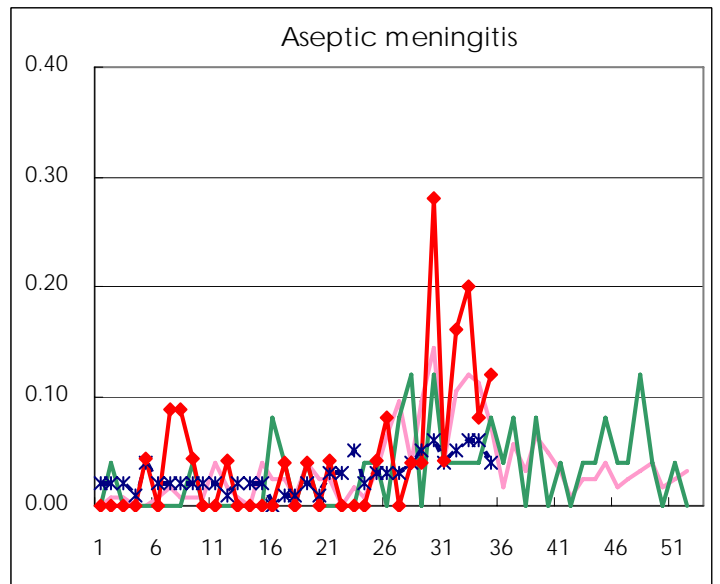
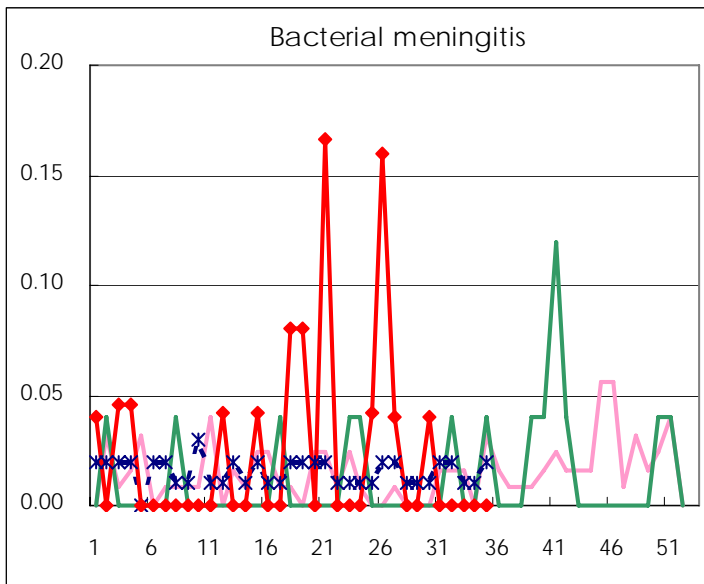
( Blank means 0. )

# Disease Trend Graph (weekly reported cases per fixed-point in comparison)









Number of sentinel facilities for weekly reporting		
Types of sentinels	Number of sentinels	Sentinels having reported
Pediatric	150	144
Influenza	290	281
Ophthalmic	39	39
Specially-designated	25	25

Tokyo Metropolitan Government  
Infectious Disease Surveillance Center