
INFECTIOUS DISEASES WEEKLY REPORT

TOKYO IDWR

Tokyo Metropolitan Infectious Disease Surveillance Center

13 September 2007 / Number 36

Surveillance System in Tokyo, Japan

The infectious diseases which all physicians must report

All physicians must report to health centers the incidence of the diseases which are shown at page one. Health centers electronically report the individual cases to Tokyo Metropolitan Infectious Disease Surveillance Center.

The infectious diseases required to be reported by the sentinels

The numbers of patients who visit the sentinel clinics or hospitals during a week are reported to health centers in Tokyo. And they electronically report the numbers to Tokyo Metropolitan Infectious Disease Surveillance Center. We have about 400 sentinel clinics and hospitals in Tokyo.

1st Week is early January and 52nd Week is end of December.

Tokyo Metropolitan Institute of Public Health
Epidemiological Information Office

TEL:81-3-3363-3213 FAX:81-3-5332-7365
e-mail:idsc@tokyo-eiken.go.jp
URL:idsc.tokyo-eiken.go.jp/

Number of patients with the diseases which all physicians must report

Category	Diseases	Tokyo					Japan	
		33th	34th	35th	36th	Cum 2007	36th	Cum 2007
I	Ebola hemorrhagic fever							
	Crimean-Congo hemorrhagic fever							
	Smallpox							
	South American hemorrhagic fever							
	Plague							
	Marburg disease							
	Lassa fever							
II	Acute poliomyelitis							
	Tuberculosis	73	78	70	51	1709	232	9065
	Diphtheria							
	Severe Acute Respiratory Syndrome(SARS)							
III	Cholera					2		10
	Shigellosis	1	5	2	3	60	5	356
	Enterohemorrhagic Escherichia coli infection	8	9	9	12	362	147	2982
	Typhoid fever		1	1	1	8	1	28
	Paratyphoid fever					4	2	12
IV	Hepatitis E					2	1	40
	West Nile fever							
	Hepatitis A					15	1	109
	Echinococcosis					4		13
	Yellow fever							
	Psittacosis					1		23
	Omsk hemorrhagic fever							
	Relapsing fever							
	Kyasanur forest disease							
	Q fever							3
	Rabies							
	Coccidioidomycosis					2		3
	Monkeypox							
	Hemorrhagic fever with renal syndrome							
	Western equine encephalitis							
	Tick-borne encephalitis							
	Anthrax							
	Scrub typhus(Tsutsugamushi disease)					2		95
	Dengue fever		2	3		13	1	52
	Eastern equine encephalitis							
	Avian influenza virus infection							
	Nipah virus infection							
	Japanese spotted fever						2	40
	Japanese encephalitis							1
	Epidemic typhus							
	Hantavirus pulmonary syndrome							
	Herpes B virus infection							
	Glanders							
	Brucellosis							1
	Venezuelan equine encephalitis							
	Hendra virus infection							
	Botulism							2
	Malaria	1			1	15	1	34
Tularemia								
Lyme disease		1		1	2	1	6	
Lyssavirus infection(excluding rabies)								
Rift valley fever								
Melioidosis								
Legionellosis		1	1	1	34	10	415	
Leptospirosis					2	2	14	
Rocky mountain spotted fever								
Amebiasis	3	2	4	4	122	11	549	

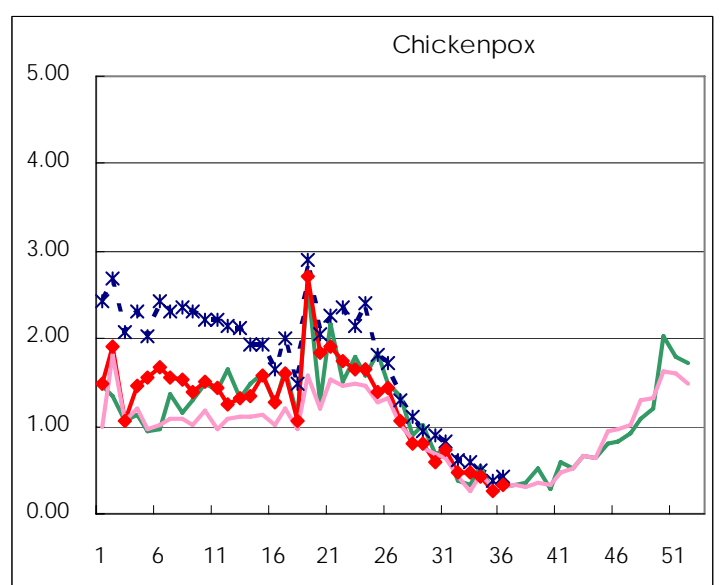
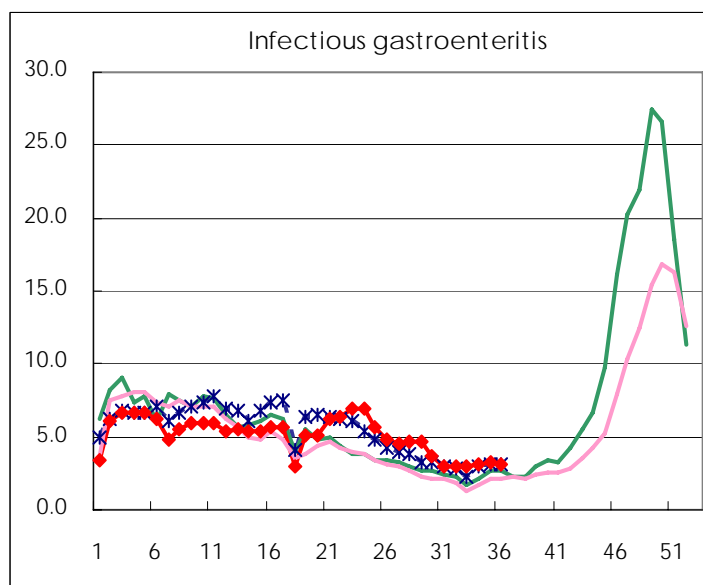
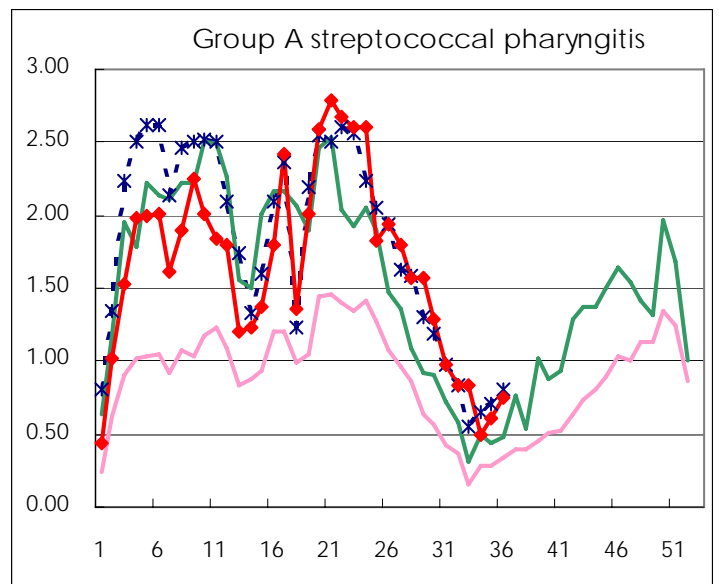
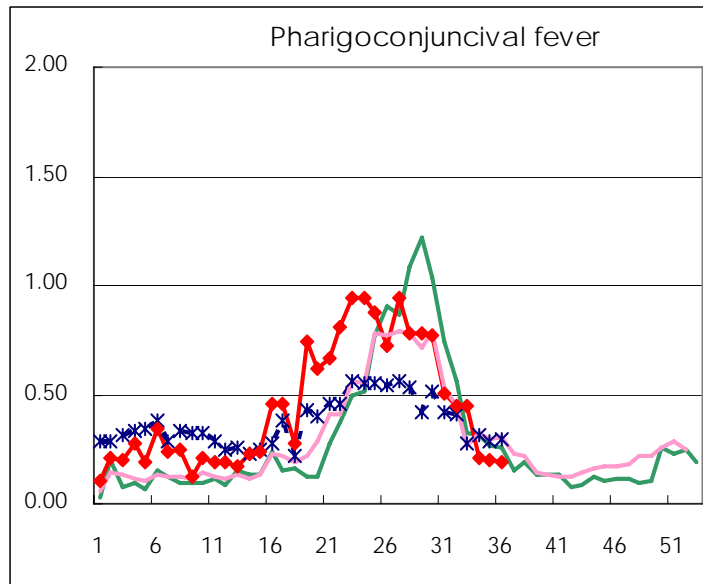
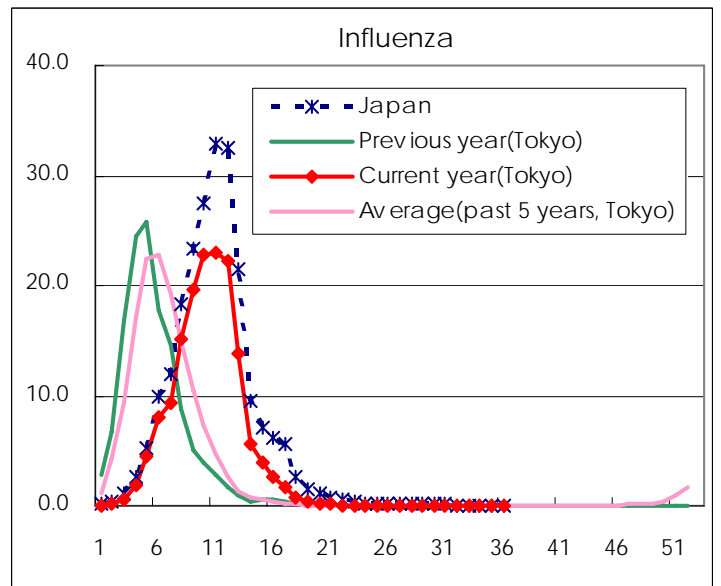
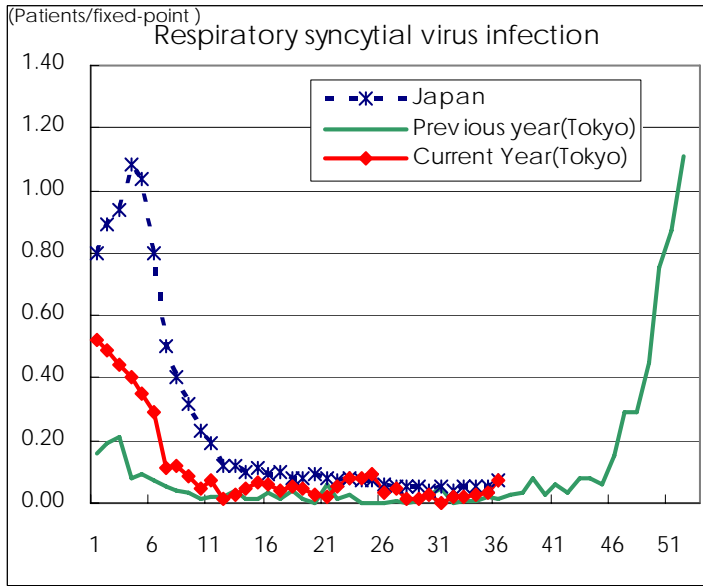
Category	Diseases	Tokyo				Japan		
		33th	34th	35th	36th	Cum 2007	36th	Cum 2007
V	Viral hepatitis(excluding hepatitis A and E)	1		1		28	1	157
	Acute encephalitis(excluding JE and WNE)	2	2			15	2	167
	Cryptosporidiosis		1			1	1	6
	Creutzfeldt-Jakob disease					8	3	103
	Severe invasive streptococcal infections(TSLS)			1		4		67
	Acquired immunodeficiency syndrome (AIDS)	12	5	11	6	333	11	982
	Giardiasis		1		1	11		35
	Meningococcal meningitis					1		12
	Congenital rubella syndrome							
	Syphilis	2	1	6	3	96	7	460
	Tetanus					1	1	65
	Vancomycin-resistant S. aureus infection							
	Vancomycin-resistant Enterococcus infection	1				11	2	51
designated	Influenza (H5N1)							

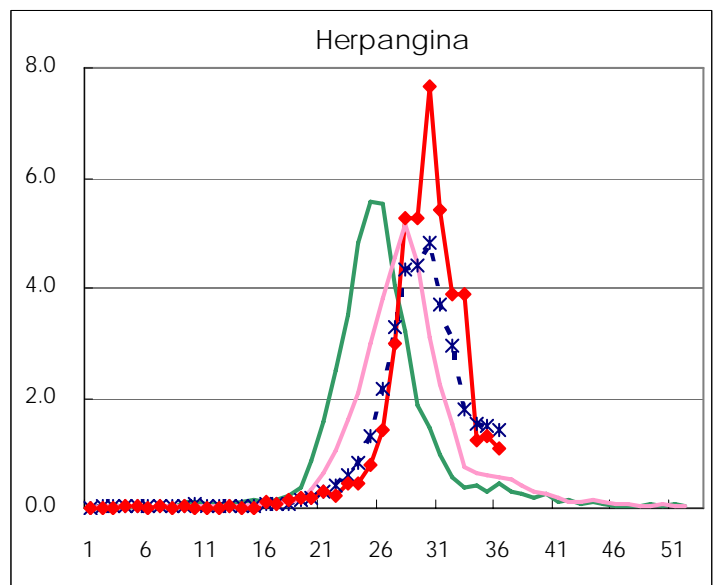
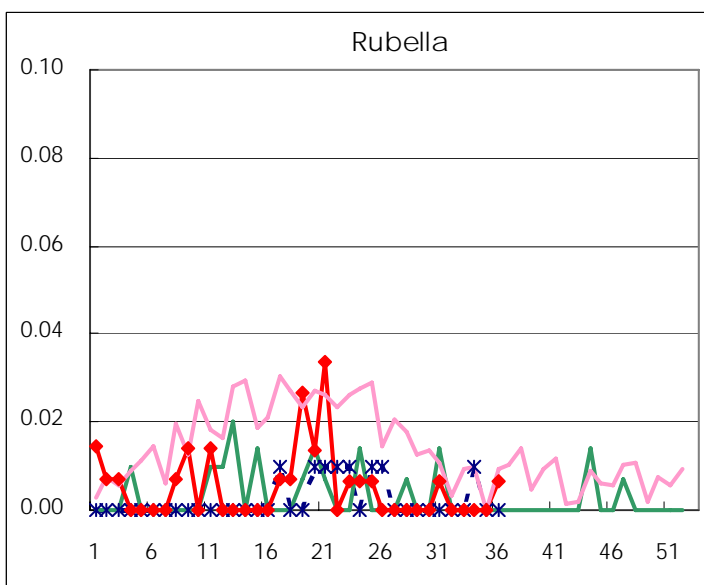
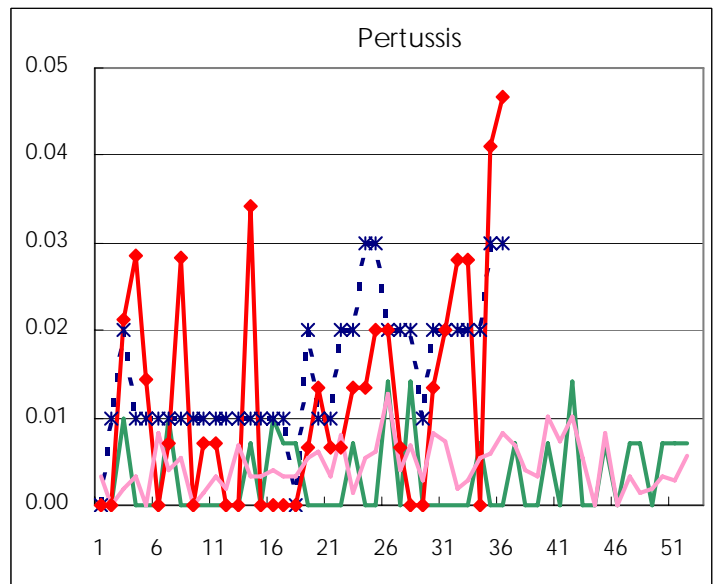
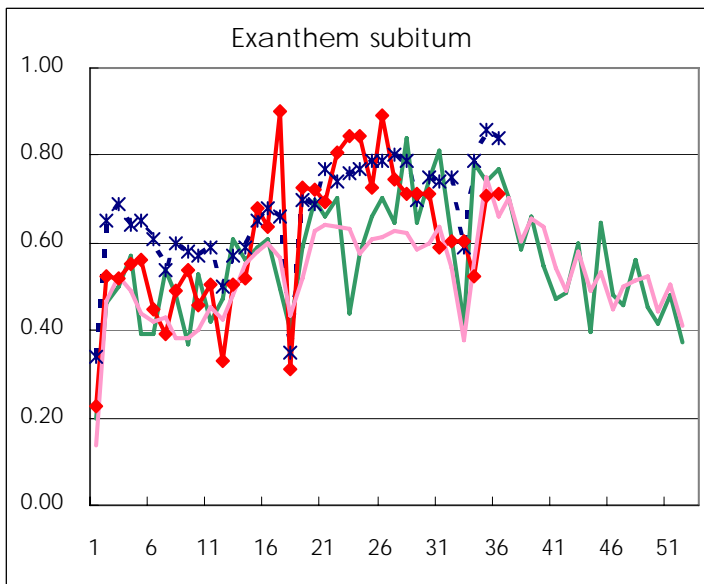
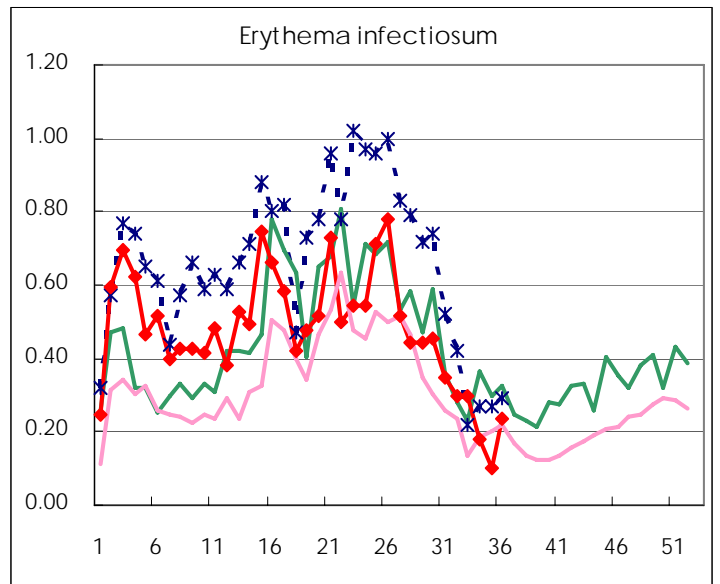
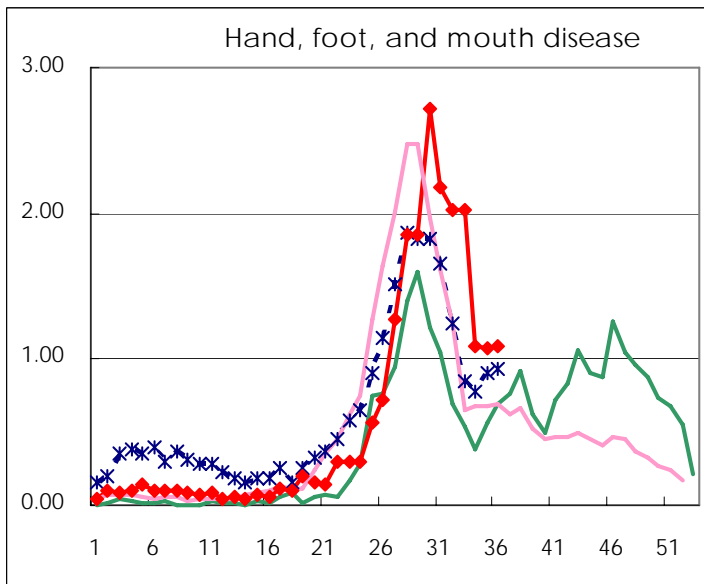
Number of patients with the diseases to be reported
by the designated clinics and hospitals

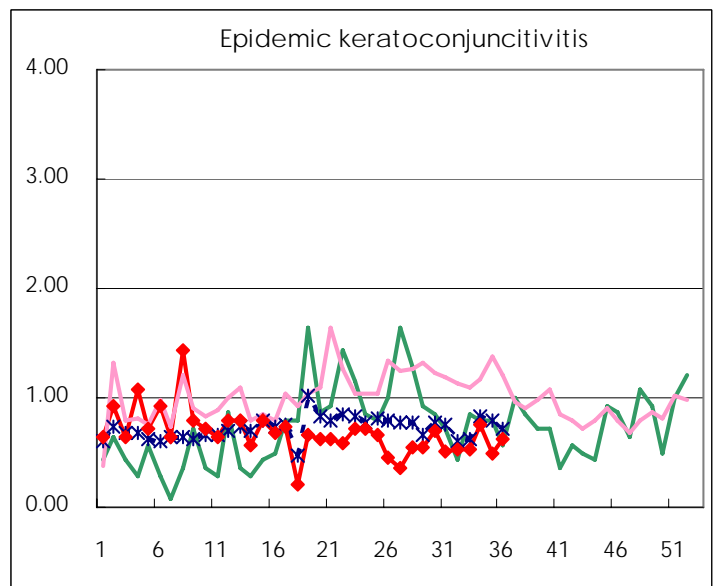
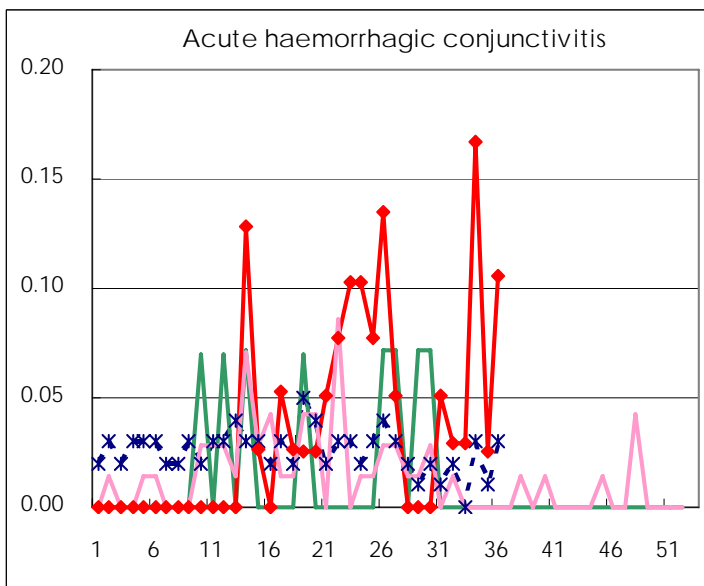
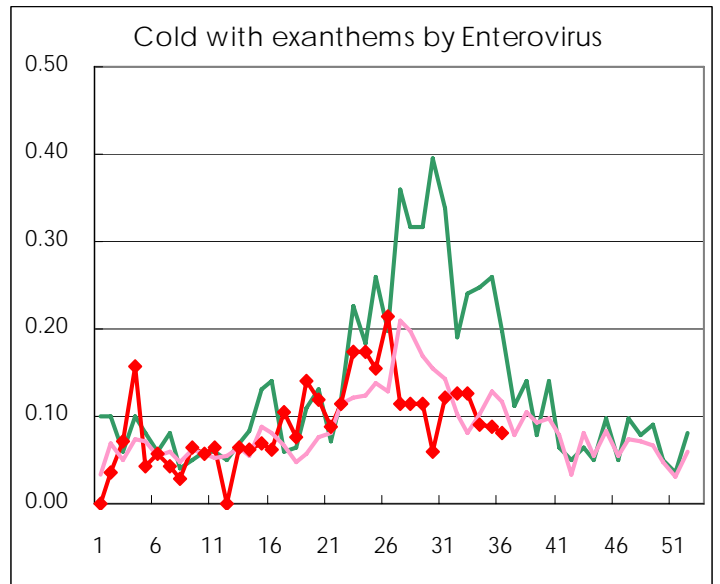
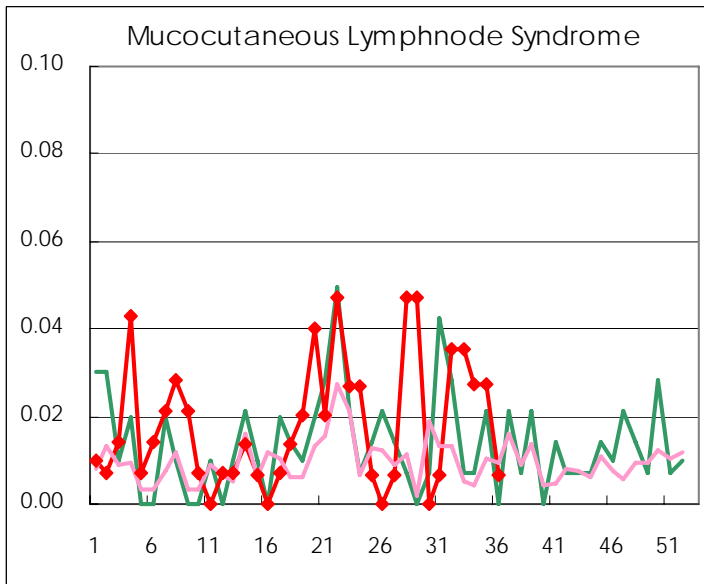
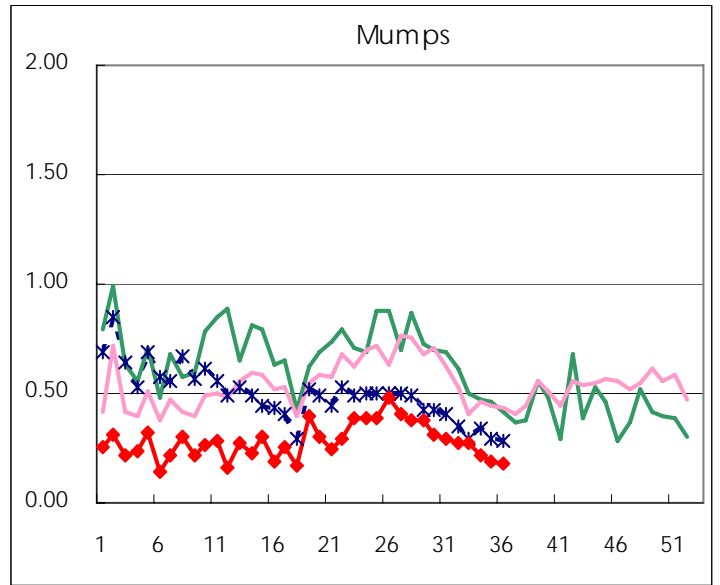
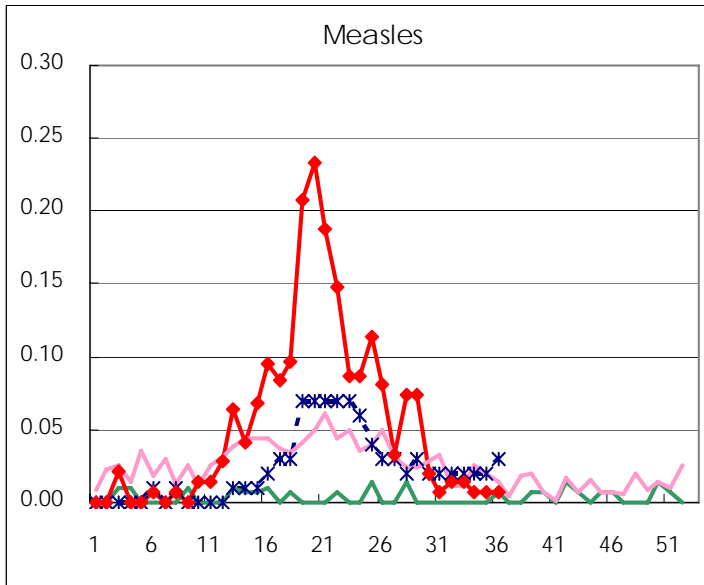
Diseases	2007				4wks total	Cum 2007
	33th	34th	35th	36th		
Respiratory syncytial virus infection		4	5	11	20	553
Influenza			3	2	5	43793
Pharyngoconjunctival fever	25	30	29	28	112	2272
Group A streptococcal pharyngitis	65	72	88	112	337	8562
Infectious gastroenteritis	295	454	482	465	1,696	26158
Chickenpox	51	61	37	49	198	6752
Hand, foot, and mouth disease	158	157	157	164	636	3101
Erythema infectiosum	13	26	15	35	89	2494
Exanthem subitum	63	76	103	107	349	3160
Pertussis	1		6	7	14	54
Rubella	1			1	2	28
Herpangina	268	181	191	163	803	6119
Measles		1	1	1	3	285
Mumps	17	32	28	27	104	1457
Cold with exanthems by Enterovirus	11	13	13	12	49	471
Mucocutaneous Lymphnode Syndrome	1	4	4	1	10	84
Acute hemorrhagic conjunctivitis	2	6	1	4	13	48
Epidemic keratoconjunctivitis	10	27	19	24	80	647
Bacterial meningitis				1	1	21
Aseptic meningitis	5	2	3	3	13	44
Mycoplasma pneumonia	3	3	1	2	9	125
Chlamydial pneumonia (excluding psittacosis)	1	1	1		3	11
Measles in adults	1		2	1	4	252

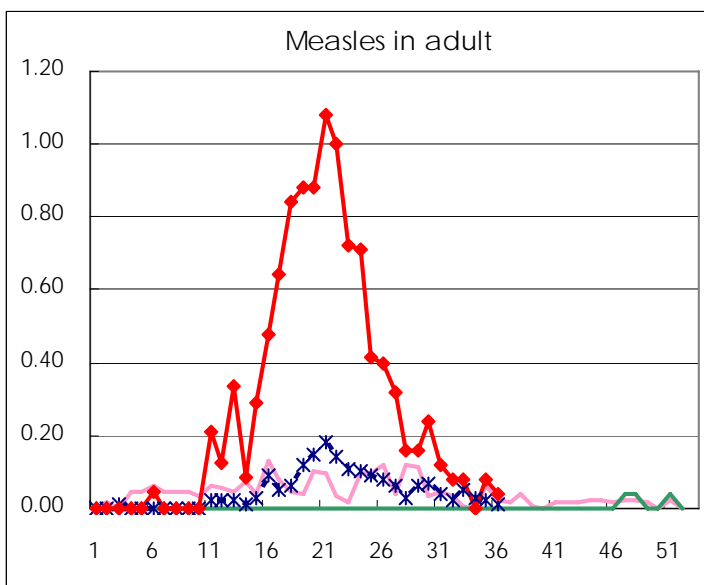
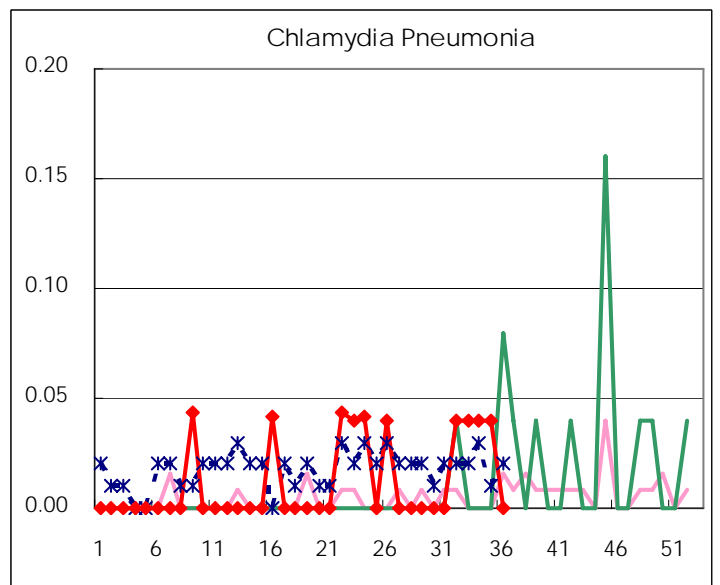
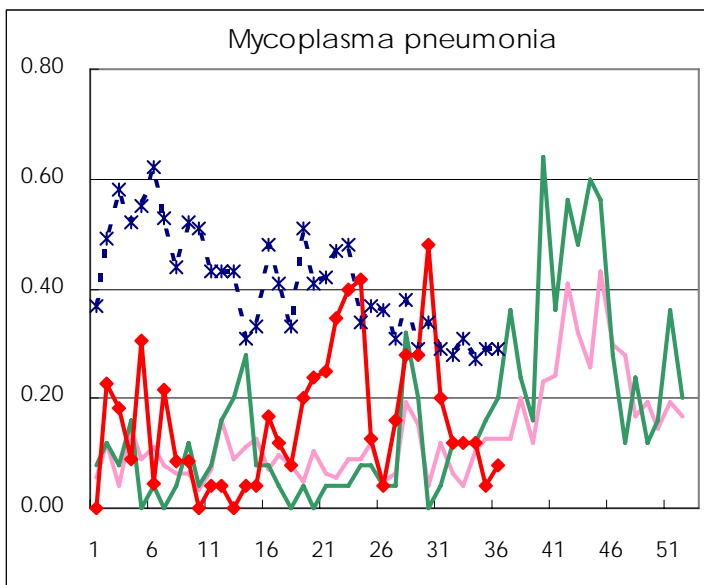
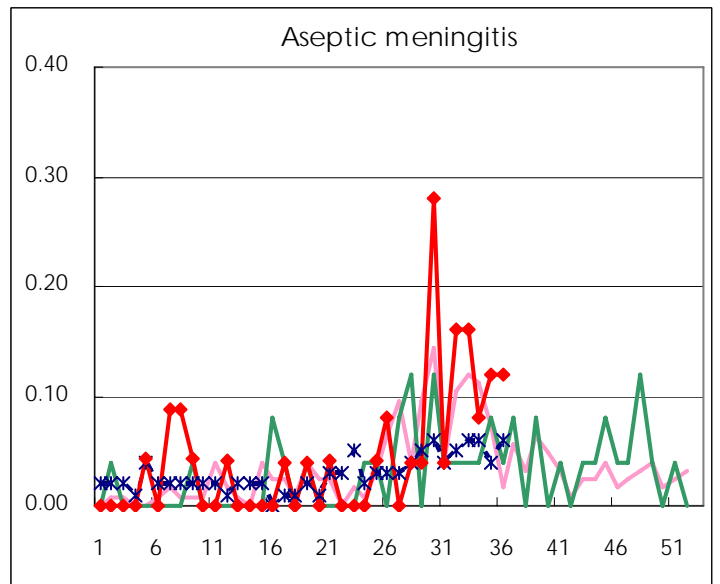
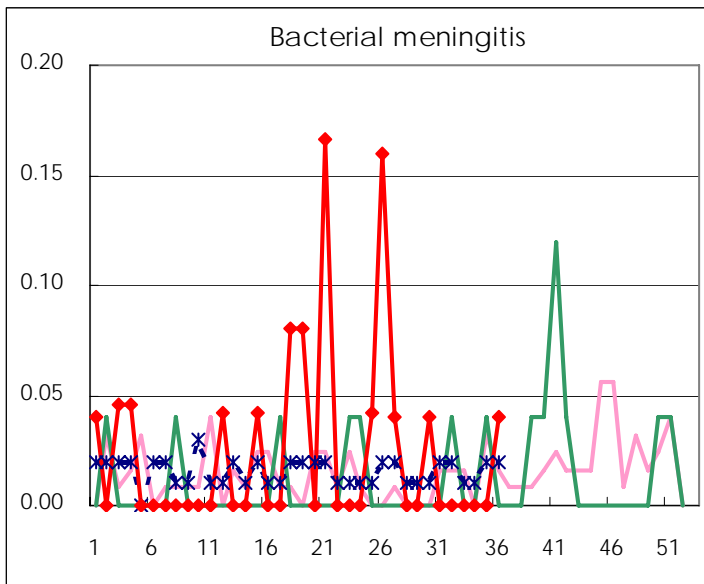
(Blank means 0.)

Disease Trend Graph (weekly reported cases per fixed-point in comparison)









Number of sentinel facilities for weekly reporting		
Types of sentinels	Number of sentinels	Sentinels having reported
Pediatric	150	150
Influenza	290	286
Ophthalmic	39	38
Specially-designated	25	25

Tokyo Metropolitan Government
Infectious Disease Surveillance Center