
INFECTIOUS DISEASES WEEKLY REPORT

TOKYO IDWR

Tokyo Metropolitan Infectious Disease Surveillance Center

20 September 2007 / Number 37

Surveillance System in Tokyo, Japan

The infectious diseases which all physicians must report

All physicians must report to health centers the incidence of the diseases which are shown at page one. Health centers electronically report the individual cases to Tokyo Metropolitan Infectious Disease Surveillance Center.

The infectious diseases required to be reported by the sentinels

The numbers of patients who visit the sentinel clinics or hospitals during a week are reported to health centers in Tokyo. And they electronically report the numbers to Tokyo Metropolitan Infectious Disease Surveillance Center. We have about 400 sentinel clinics and hospitals in Tokyo.

1st Week is early January and 52nd Week is end of December.

Tokyo Metropolitan Institute of Public Health
Epidemiological Information Office

TEL:81-3-3363-3213 FAX:81-3-5332-7365

e-mail:idsc@tokyo-eiken.go.jp

URL:idsc.tokyo-eiken.go.jp/

Number of patients with the diseases which all physicians must report

Category	Diseases	lokvo				Cum 2007	Janan	
		34th	35th	36th	37th		37th	Cum 2007
I	Ebola hemorrhagic fever							
	Crimean-Congo hemorrhagic fever							
	Smallpox							
	South American hemorrhagic fever							
	Plague							
	Marburg disease							
	Lassa fever							
II	Acute poliomyelitis							
	Tuberculosis	82	77	63	51	1810	241	9466
	Diphtheria							
	Severe Acute Respiratory Syndrome(SARS)							
III	Cholera					2		10
	Shigellosis	5	2	3	4	66	12	370
	Enterohemorrhagic Escherichia coli infection	9	9	12	11	385	142	3151
	Typhoid fever	1	1	1		9	2	30
	Paratyphoid fever					4	1	13
IV	Hepatitis E					2		41
	West Nile fever							
	Hepatitis A					15	2	111
	Echinococcosis					3		13
	Yellow fever							
	Psittacosis					1		23
	Omsk hemorrhagic fever							
	Relapsing fever							
	Kyasanur forest disease							
	Q fever							3
	Rabies							
	Coccidioidomycosis					2		3
	Monkeypox							
	Hemorrhagic fever with renal syndrome							
	Western equine encephalitis							
	Tick-borne encephalitis							
	Anthrax							
	Scrub typhus(Tsutsugamushi disease)					2		95
	Dengue fever	2	3		4	17	5	59
	Eastern equine encephalitis							
	Avian influenza virus infection							
	Nipah virus infection							
	Japanese spotted fever						2	43
	Japanese encephalitis							1
	Epidemic typhus							
	Hantavirus pulmonary syndrome							
	Herpes B virus infection							
	Glanders							
	Brucellosis							1
	Venezuelan equine encephalitis							
	Hendra virus infection							
	Botulism							2
	Malaria			1	2	18	3	36
Tularemia								
Lyme disease	1		1		3		7	
Lyssavirus infection(excluding rabies)								
Rift valley fever								
Melioidosis								
Legionellosis	1	1	1	3	38	13	435	
Leptospirosis				1	3	2	16	
Rocky mountain spotted fever								

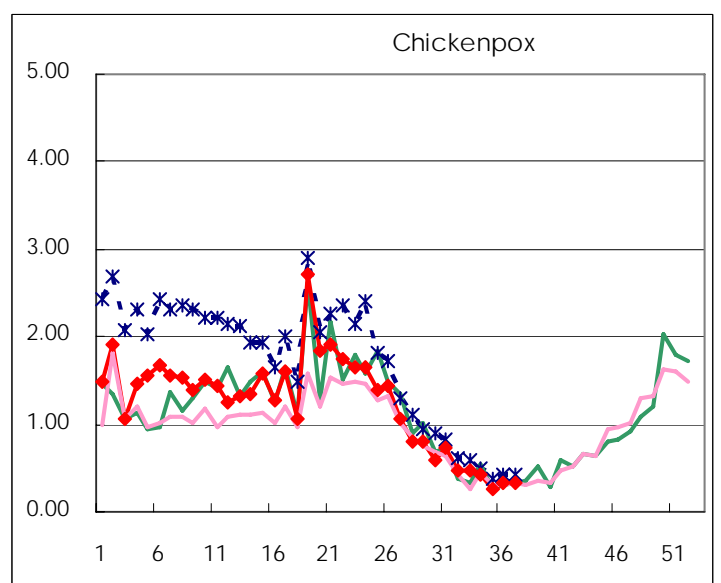
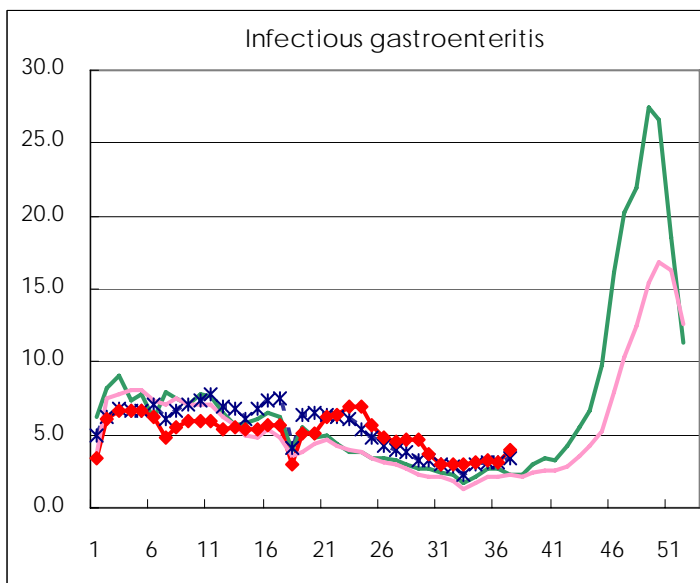
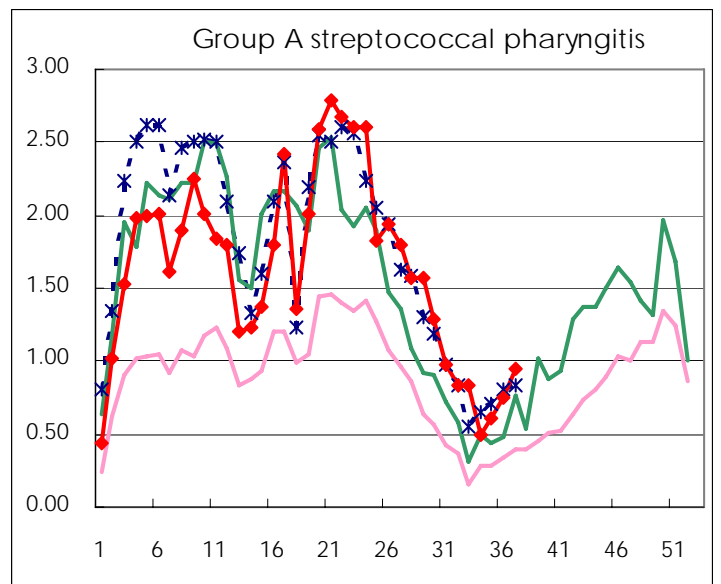
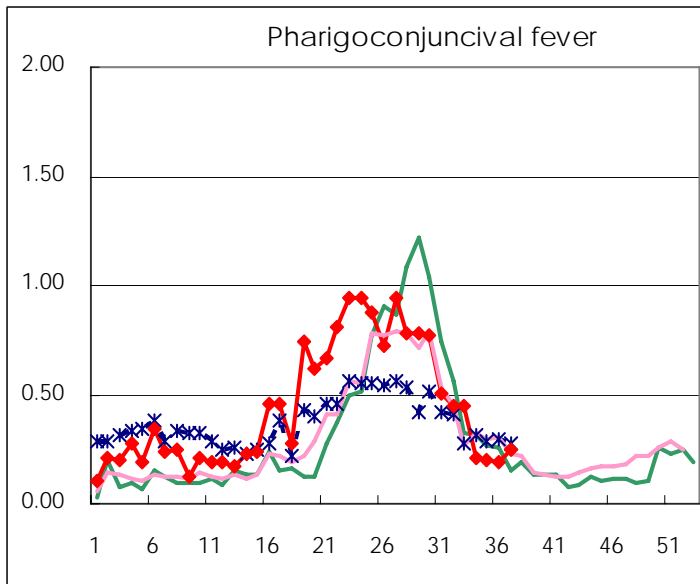
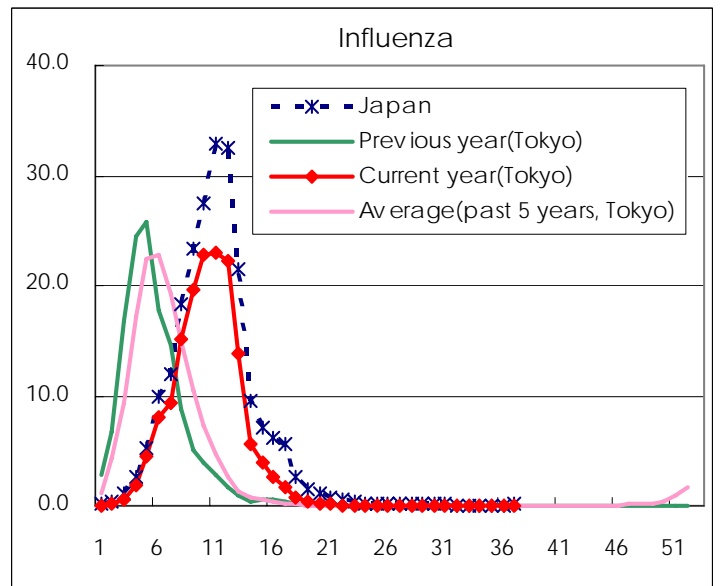
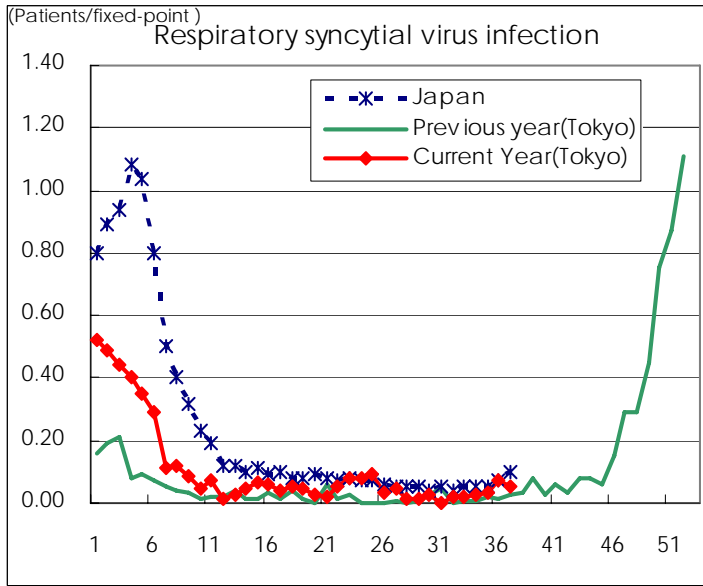
Category	Diseases	Tokyo				Cum 2007	Japan	
		34th	35th	36th	37th		37th	Cum 2007
V	Amebiasis	2	4	4	3	129	8	561
	Viral hepatitis(excluding hepatitis A and E)		1		1	29	5	165
	Acute encephalitis(excluding JE and WNE)	2			1	16	3	172
	Cryptosporidiosis	1				1		6
	Creutzfeldt-Jakob disease					8	3	106
	Severe invasive streptococcal infections(TSLS)		1			4		69
	Acquired immunodeficiency syndrome (AIDS)	5	11	6	6	345	9	1009
	Giardiasis	1		1		12		35
	Meningococcal meningitis					1	1	13
	Congenital rubella syndrome							
	Syphilis	1	6	3	5	104	8	478
	Tetanus					1	1	68
	Vancomycin-resistant S. aureus infection							
	Vancomycin-resistant Enterococcus infection					11	1	53
designated	Influenza (H5N1)							

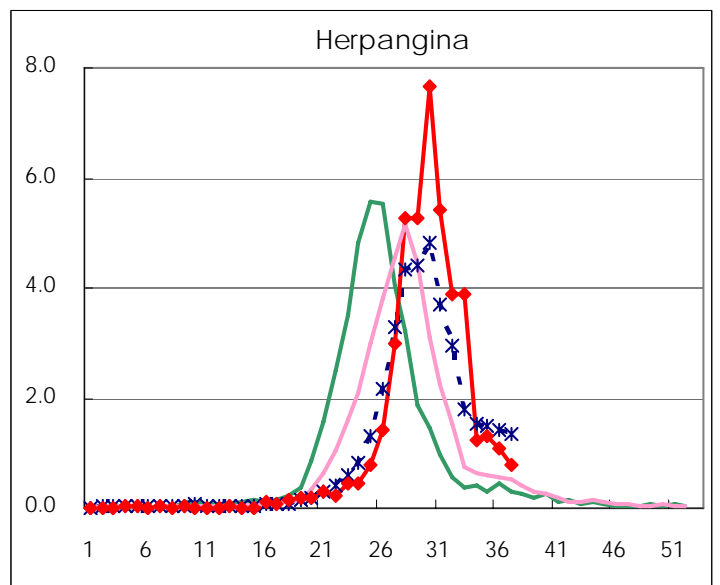
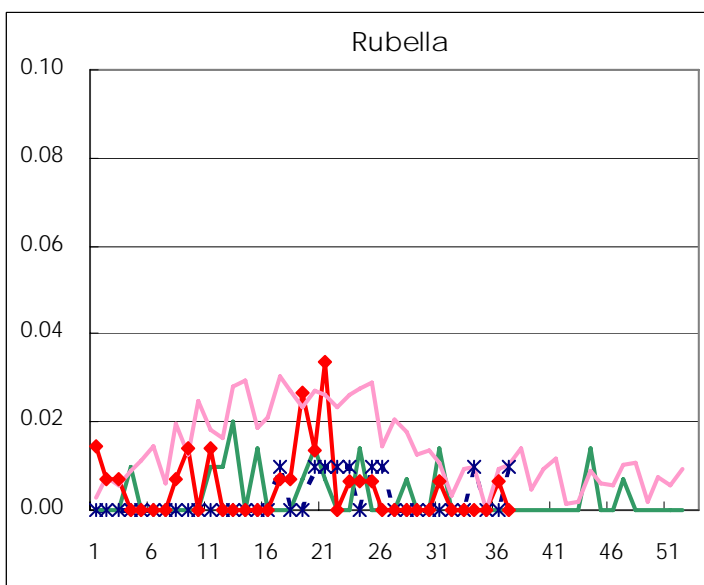
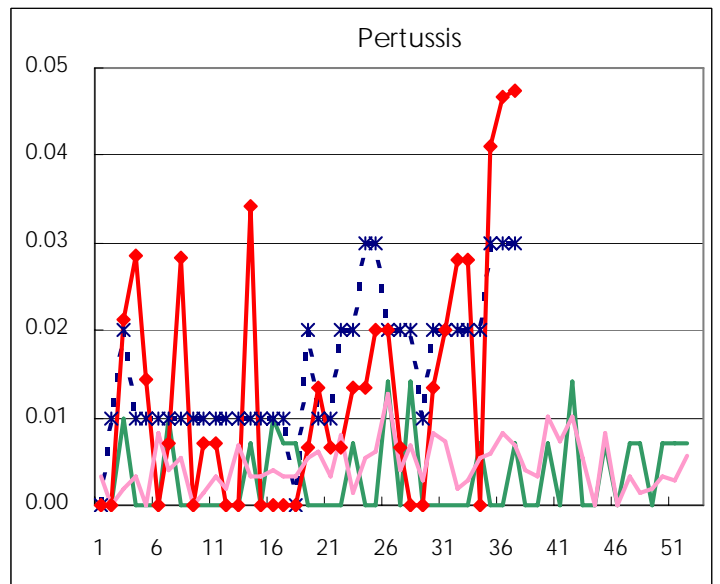
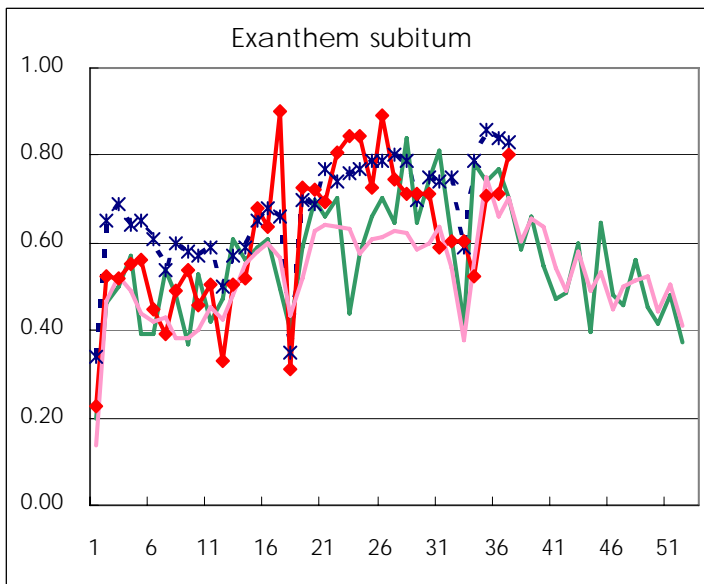
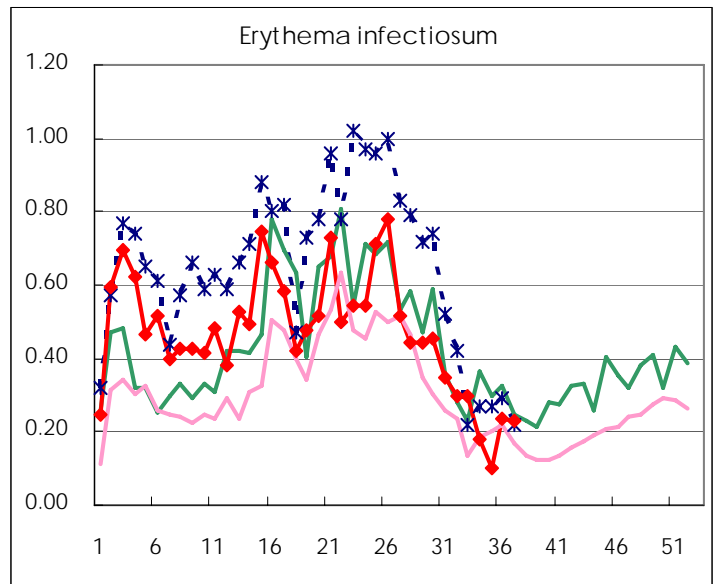
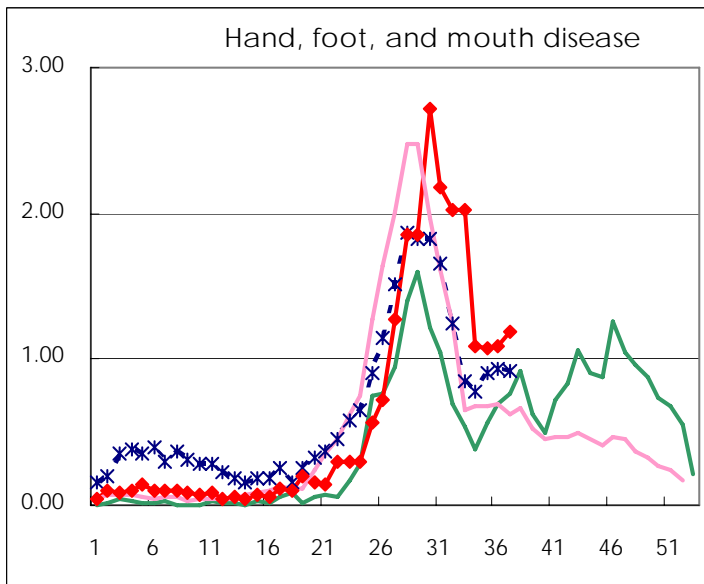
Number of patients with the diseases to be reported
by the designated clinics and hospitals

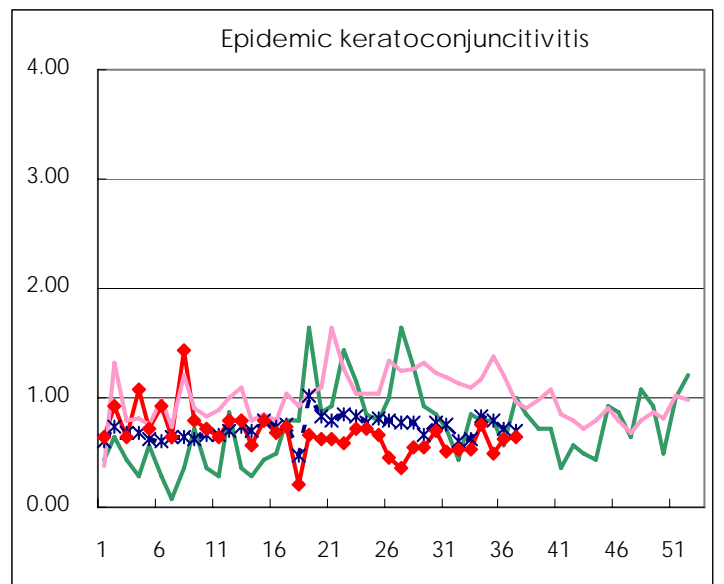
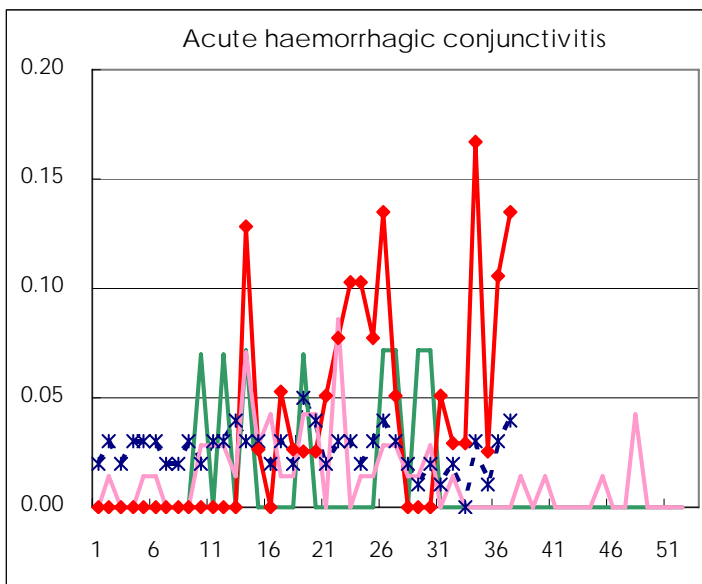
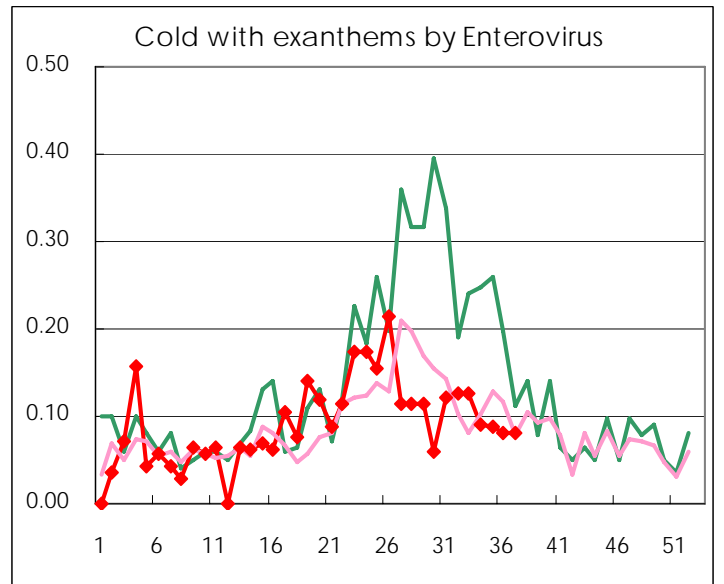
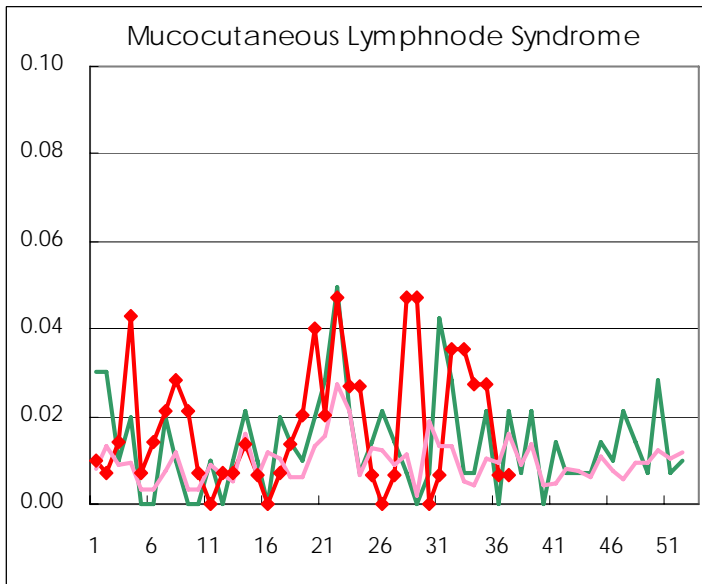
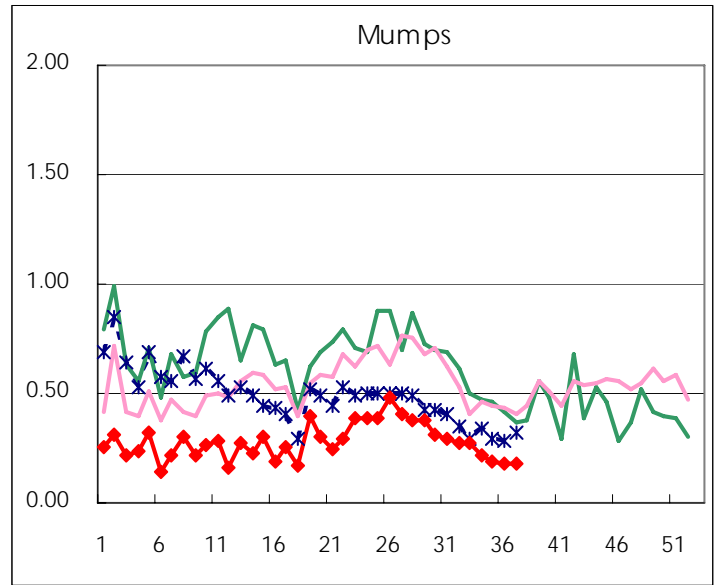
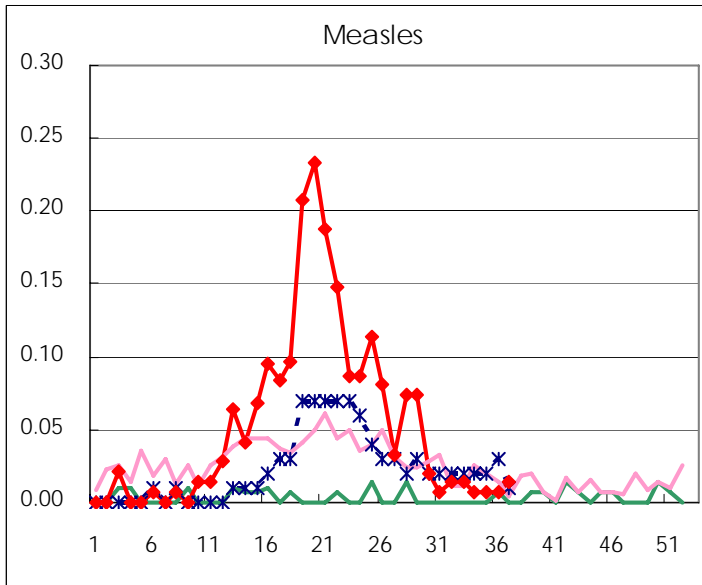
Diseases	2007				4wks total	Cum 2007
	34th	35th	36th	37th		
Respiratory syncytial virus infection	4	5	11	8	28	561
Influenza		3	2	1	6	43794
Pharyngoconjunctival fever	30	29	28	36	123	2308
Group A streptococcal pharyngitis	72	88	112	140	412	8702
Infectious gastroenteritis	454	482	465	596	1,997	26754
Chickenpox	61	37	49	48	195	6800
Hand, foot, and mouth disease	157	157	164	176	654	3277
Erythema infectiosum	26	15	35	34	110	2528
Exanthem subitum	76	103	107	119	405	3279
Pertussis		6	7	7	20	61
Rubella			1		1	28
Herpangina	181	191	163	116	651	6235
Measles	1	1	1	2	5	287
Mumps	32	28	27	26	113	1483
Cold with exanthems by Enterovirus	13	13	12	12	50	483
Mucocutaneous Lymphnode Syndrome	4	4	1	1	10	85
Acute hemorrhagic conjunctivitis	6	1	4	5	16	53
Epidemic keratoconjunctivitis	27	19	24	24	94	671
Bacterial meningitis			3	1	4	24
Aseptic meningitis	2	3	3		8	44
Mycoplasma pneumonia	3	1	2	5	11	130
Chlamydial pneumonia (excluding psittacosis)	1	1			2	11
Measles in adults		2	1		3	252

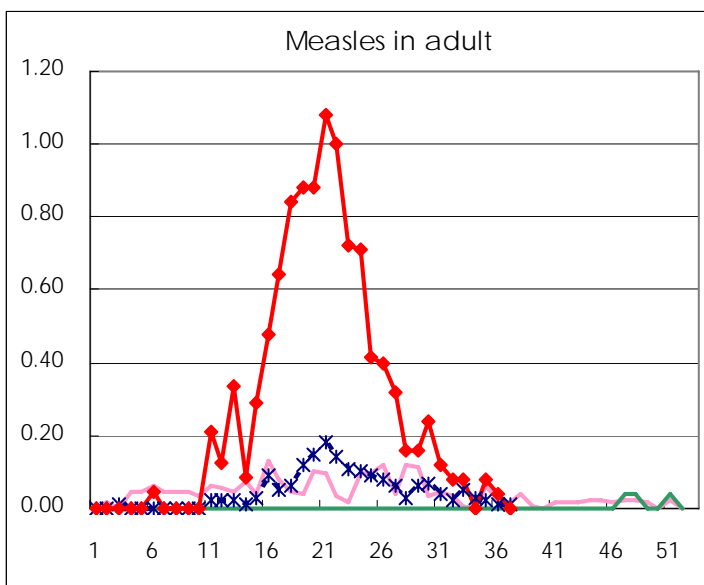
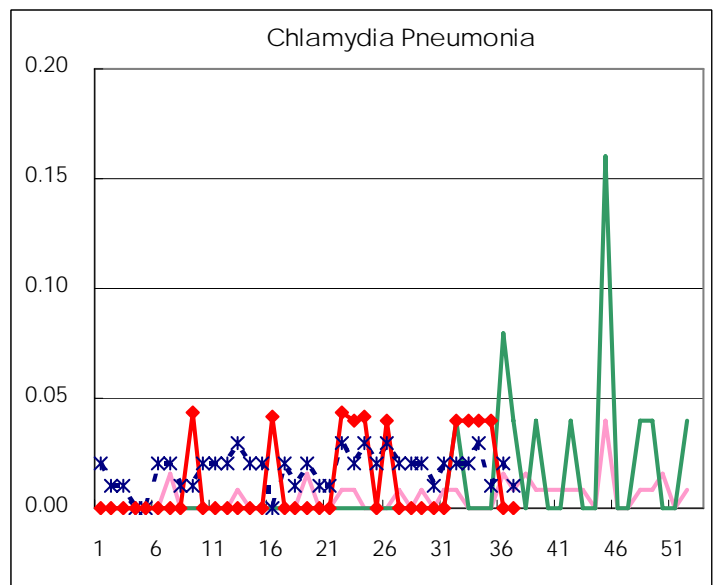
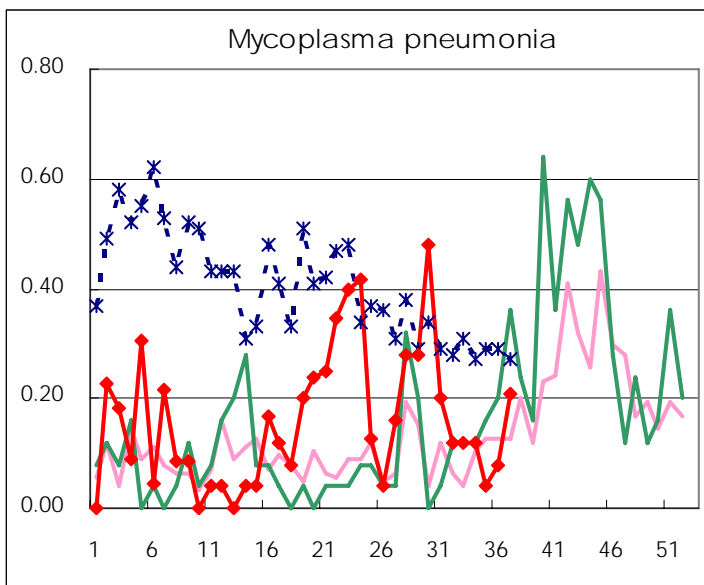
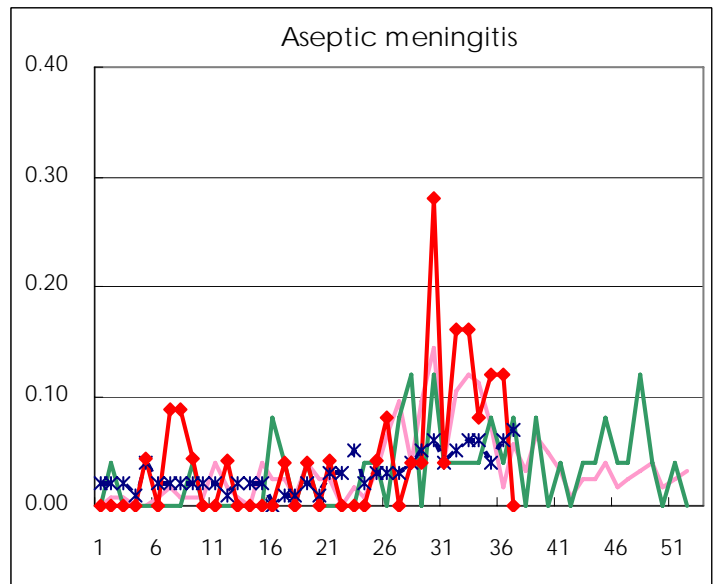
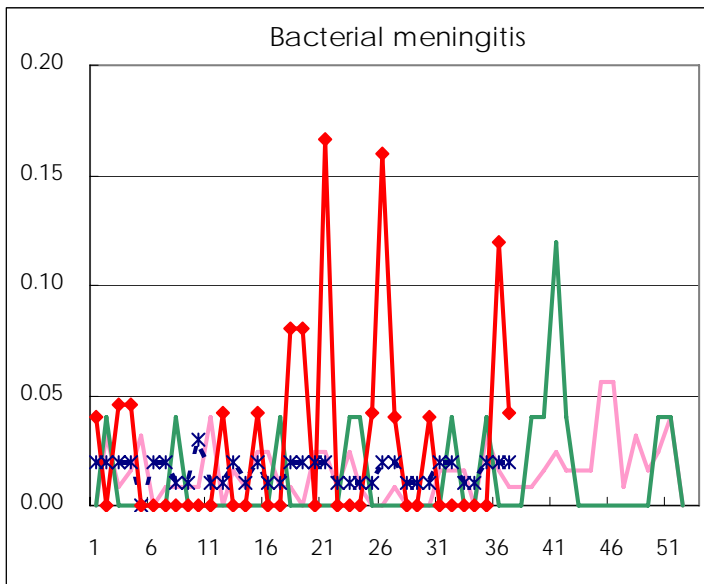
(Blank means 0.)

Disease Trend Graph (weekly reported cases per fixed-point in comparison)









Number of sentinel facilities for weekly reporting		
Types of sentinels	Number of sentinels	Sentinels having reported
Pediatric	150	148
Influenza	290	285
Ophthalmic	39	37
Specially-designated	25	24

Tokyo Metropolitan Government
Infectious Disease Surveillance Center