
INFECTIOUS DISEASES WEEKLY REPORT

TOKYO IDWR

Tokyo Metropolitan Infectious Disease Surveillance Center

27 September 2007 / Number 38

Surveillance System in Tokyo, Japan

The infectious diseases which all physicians must report

All physicians must report to health centers the incidence of the diseases which are shown at page one. Health centers electronically report the individual cases to Tokyo Metropolitan Infectious Disease Surveillance Center.

The infectious diseases required to be reported by the sentinels

The numbers of patients who visit the sentinel clinics or hospitals during a week are reported to health centers in Tokyo. And they electronically report the numbers to Tokyo Metropolitan Infectious Disease Surveillance Center. We have about 400 sentinel clinics and hospitals in Tokyo.

1st Week is early January and 52nd Week is end of December.

Tokyo Metropolitan Institute of Public Health
Epidemiological Information Office

TEL:81-3-3363-3213 FAX:81-3-5332-7365
e-mail:idsc@tokyo-eiken.go.jp
URL:idsc.tokyo-eiken.go.jp/

Number of patients with the diseases which all physicians must report

Category	Diseases	lokvo				Cum 2007	Janan	
		35th	36th	37th	38th		38th	Cum 2007
I	Ebola hemorrhagic fever							
	Crimean-Congo hemorrhagic fever							
	Smallpox							
	South American hemorrhagic fever							
	Plague							
	Marburg disease							
	Lassa fever							
II	Acute poliomyelitis							
	Tuberculosis	77	71	68	37	1884	173	9836
	Diphtheria							
	Severe Acute Respiratory Syndrome(SARS)							
III	Cholera					2		10
	Shigellosis	2	3	4		66	3	373
	Enterohemorrhagic Escherichia coli infection	9	12	11	5	390	94	3273
	Typhoid fever	1	1			9	4	34
	Paratyphoid fever					4		13
IV	Hepatitis E					2		41
	West Nile fever							
	Hepatitis A				1	16	2	114
	Echinococcosis					3		13
	Yellow fever							
	Psittacosis					1		25
	Omsk hemorrhagic fever							
	Relapsing fever							
	Kyasanur forest disease							
	Q fever							3
	Rabies							
	Coccidioidomycosis					2		3
	Monkeypox							
	Hemorrhagic fever with renal syndrome							
	Western equine encephalitis							
	Tick-borne encephalitis							
	Anthrax							
	Scrub typhus(Tsutsugamushi disease)					2		96
	Dengue fever	3		4		17	9	68
	Eastern equine encephalitis							
	Avian influenza virus infection							
	Nipah virus infection							
	Japanese spotted fever						3	49
	Japanese encephalitis							1
	Epidemic typhus							
	Hantavirus pulmonary syndrome							
	Herpes B virus infection							
	Glanders							
	Brucellosis							1
	Venezuelan equine encephalitis							
	Hendra virus infection							
	Botulism							2
	Malaria		1	2		18	1	36
Tularemia								
Lyme disease		1			3	1	8	
Lyssavirus infection(excluding rabies)								
Rift valley fever								
Melioidosis								
Legionellosis	1	1	3	2	40	9	449	
Leptospirosis			1		3		17	
Rocky mountain spotted fever								

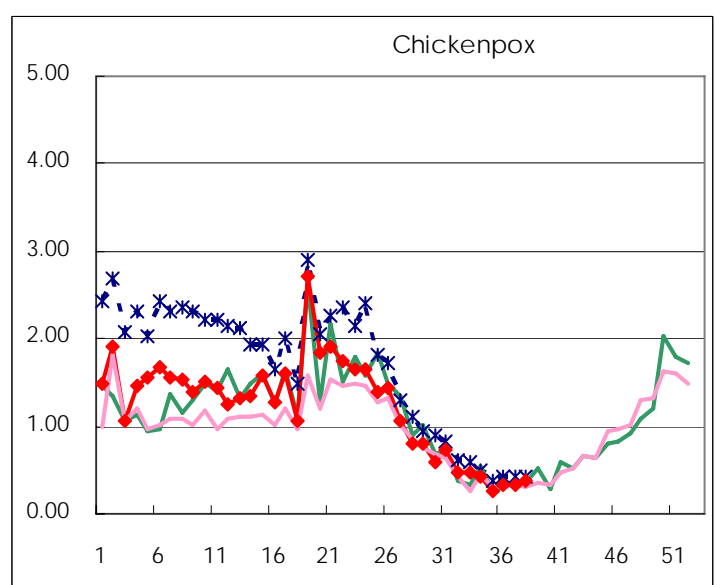
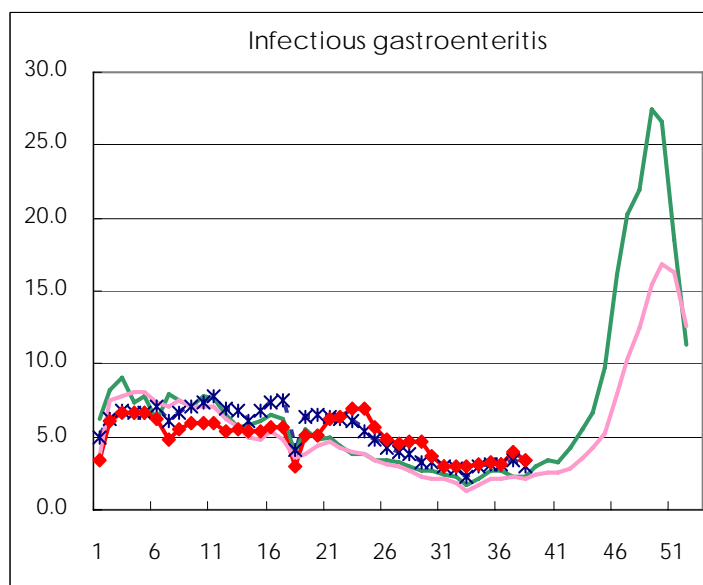
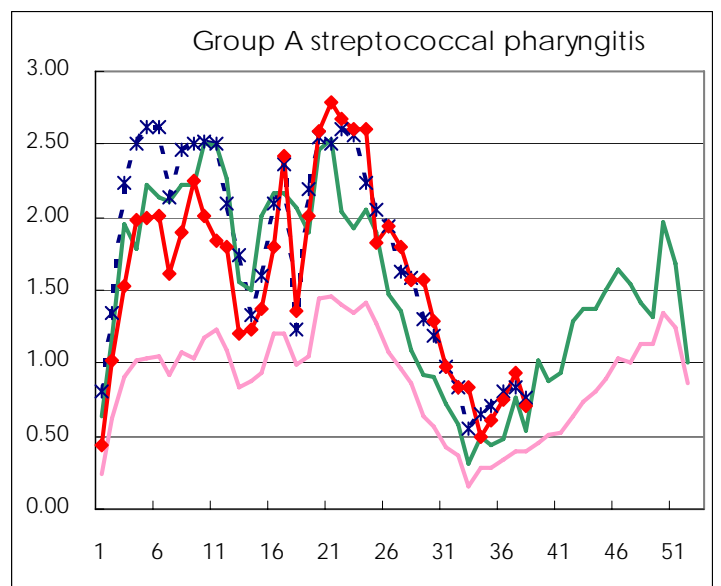
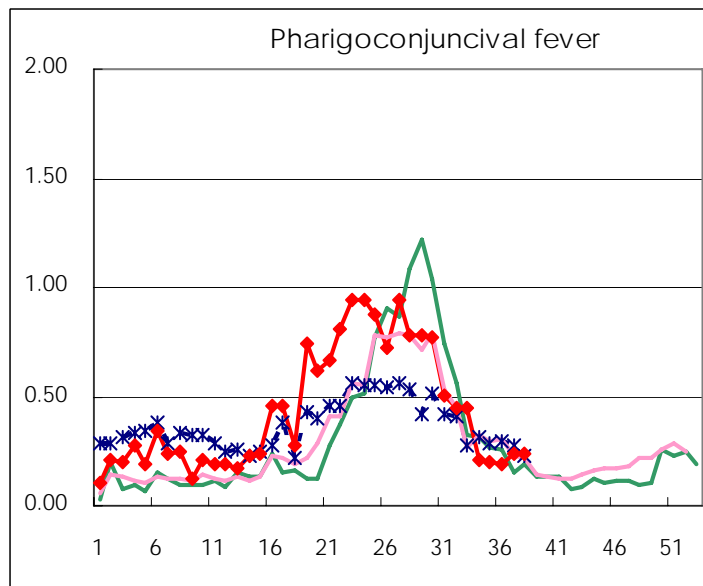
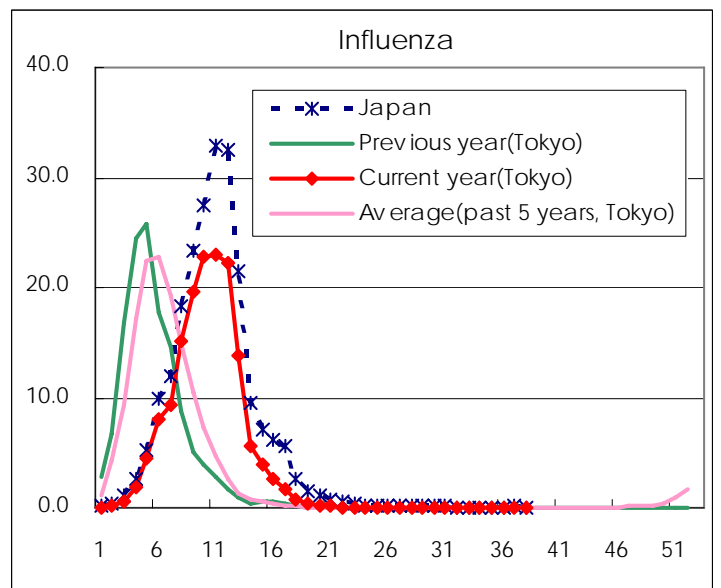
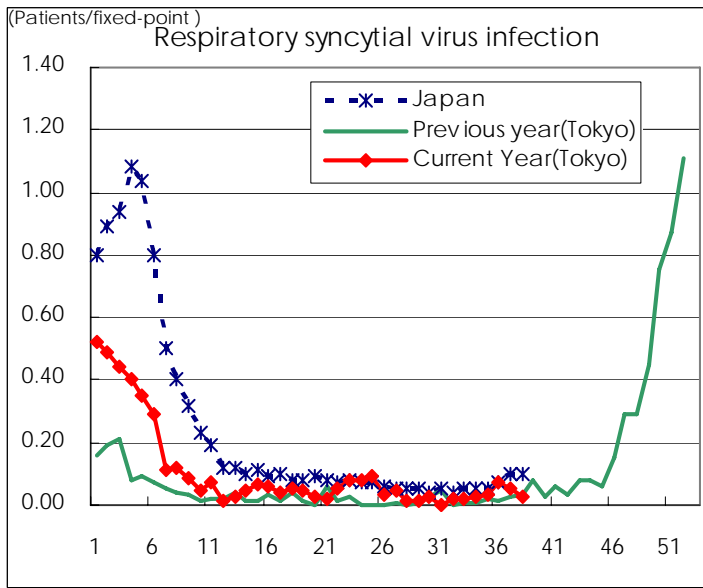
Category	Diseases	Tokyo				Cum 2007	Japan	
		35th	36th	37th	38th		38th	Cum 2007
V	Amebiasis	4	4	3	1	130	5	570
	Viral hepatitis(excluding hepatitis A and E)	1		1		29	1	166
	Acute encephalitis(excluding JE and WNE)			1	1	17		174
	Cryptosporidiosis					1		6
	Creutzfeldt-Jakob disease				2	10		108
	Severe invasive streptococcal infections(TSLS)	1				4	1	74
	Acquired immunodeficiency syndrome (AIDS)	11	6	6	10	355	22	1042
	Giardiasis		1			12	1	36
	Meningococcal meningitis				1	2		13
	Congenital rubella syndrome							
	Syphilis	6	3	5	4	108	9	494
	Tetanus					1	1	69
	Vancomycin-resistant S. aureus infection							
	Vancomycin-resistant Enterococcus infection					11	1	54
designated	Influenza (H5N1)							

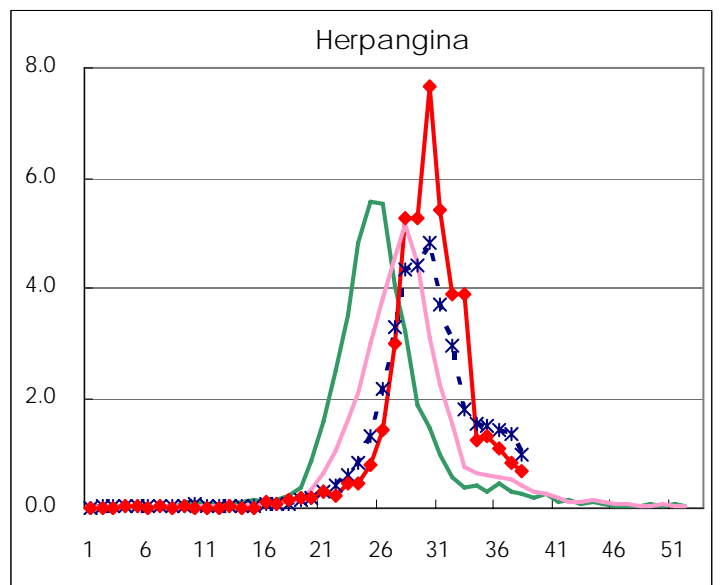
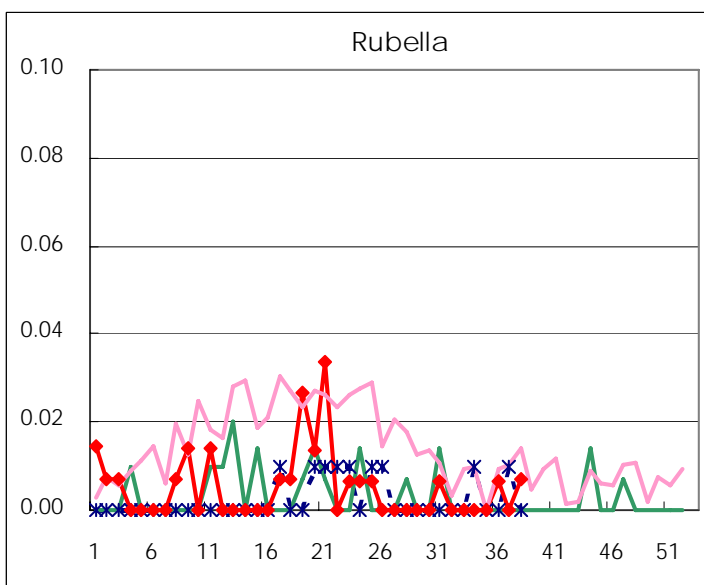
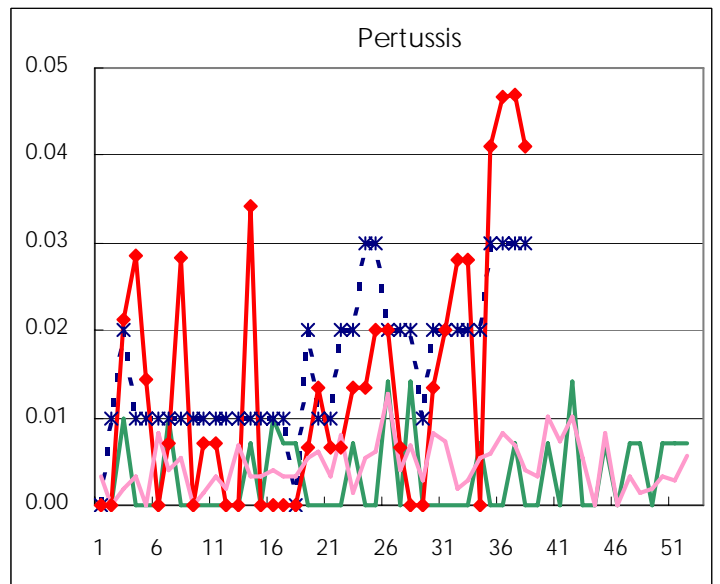
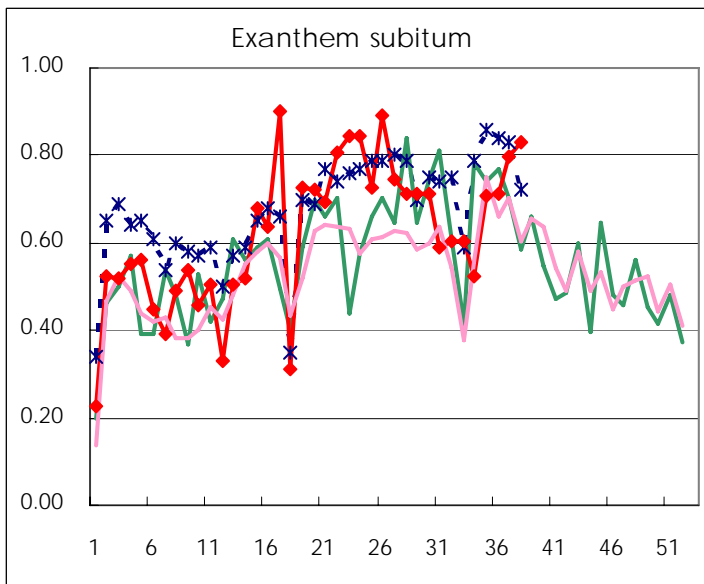
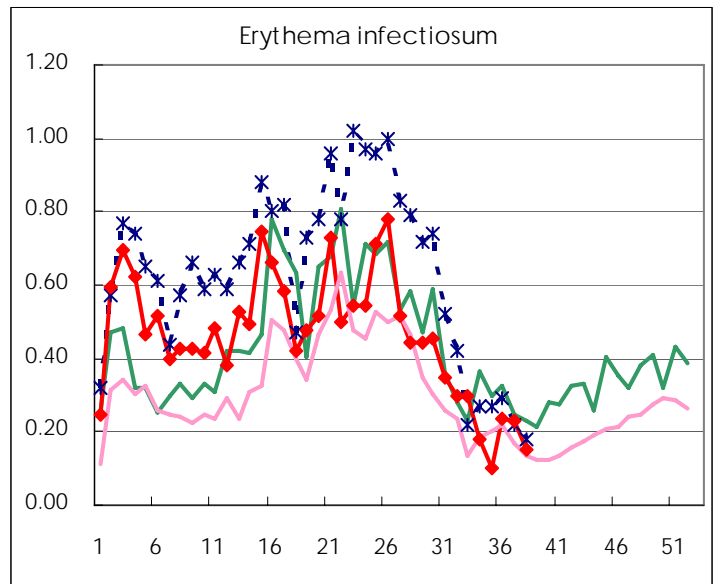
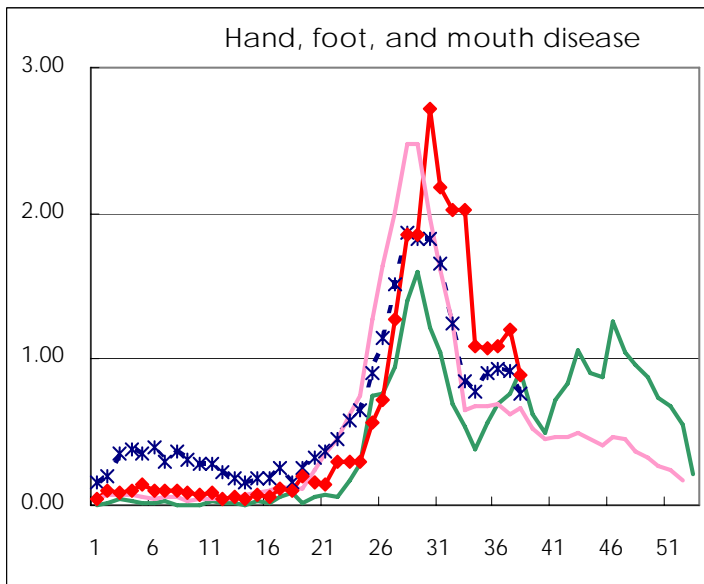
Number of patients with the diseases to be reported
by the designated clinics and hospitals

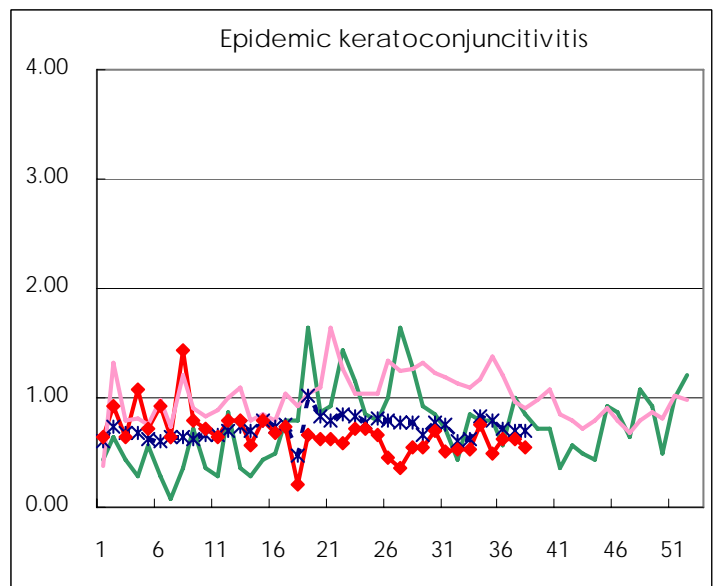
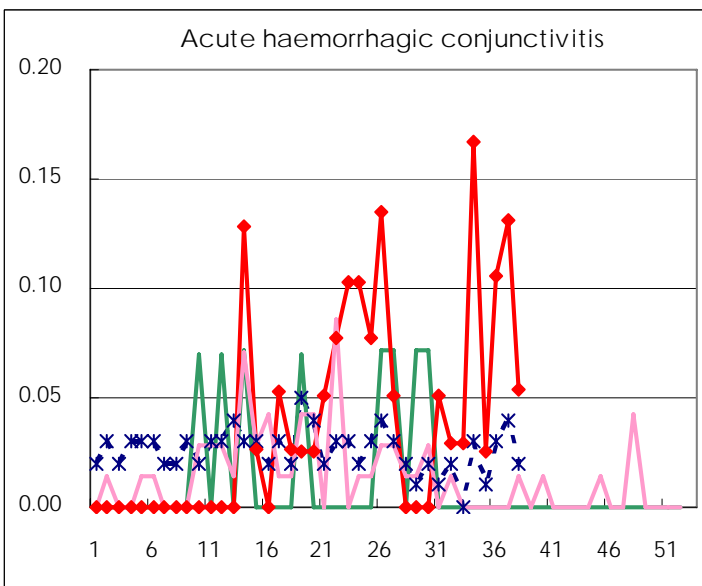
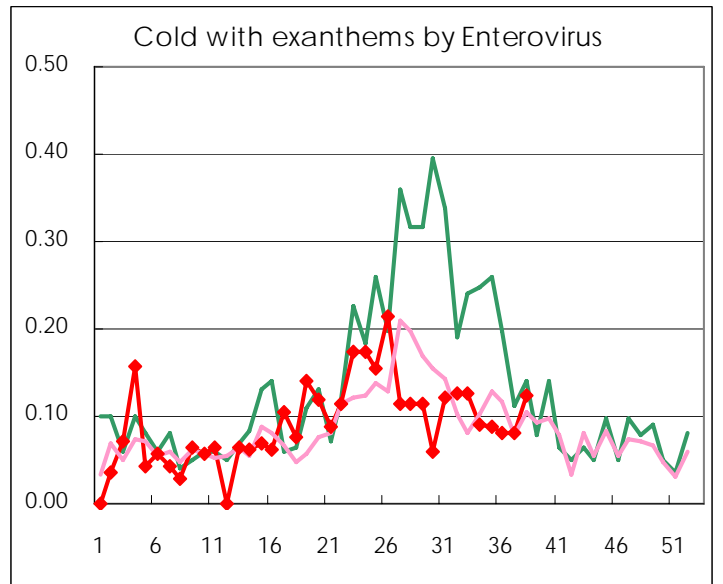
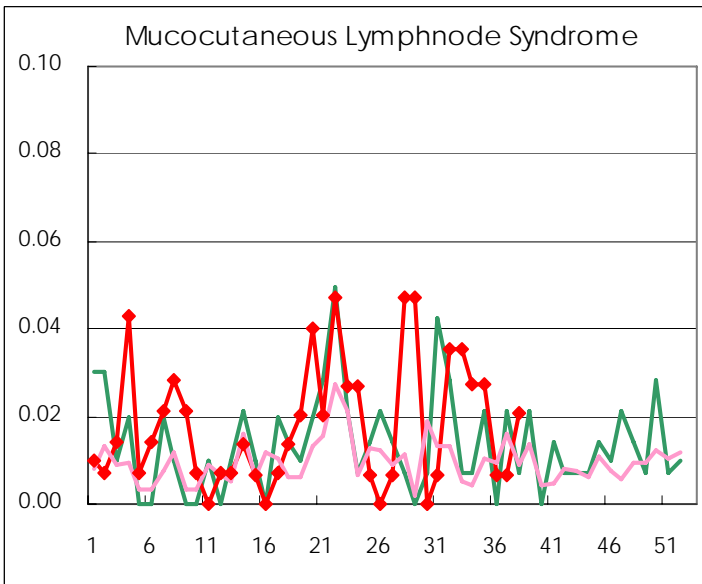
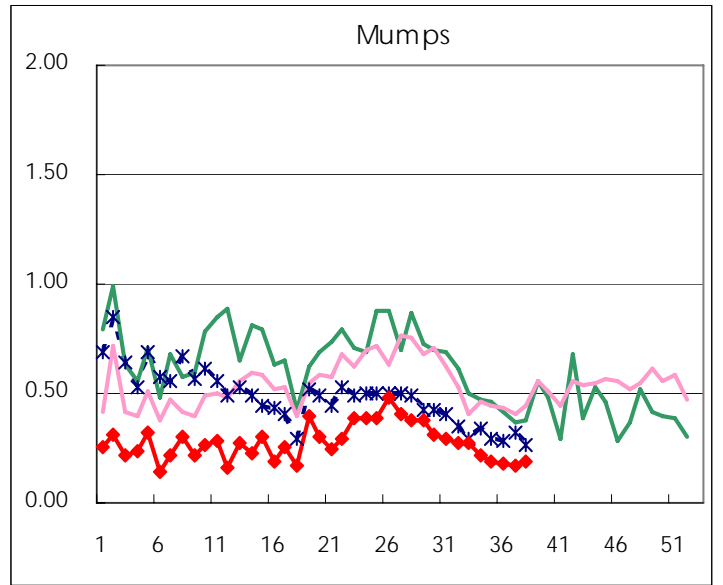
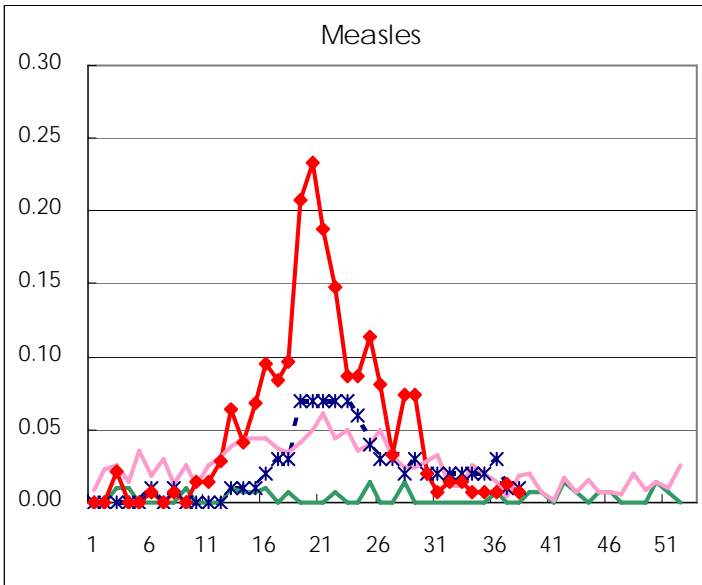
Diseases	2007				4wks total	Cum 2007
	35th	36th	37th	38th		
Respiratory syncytial virus infection	5	11	8	4	28	565
Influenza	3	2	1	14	20	43808
Pharyngoconjunctival fever	29	28	36	35	128	2343
Group A streptococcal pharyngitis	88	112	140	104	444	8806
Infectious gastroenteritis	482	465	596	494	2,037	27248
Chickenpox	37	49	48	56	190	6856
Hand, foot, and mouth disease	157	164	179	131	631	3411
Erythema infectiosum	15	35	34	22	106	2550
Exanthem subitum	103	107	119	121	450	3400
Pertussis	6	7	7	6	26	67
Rubella		1		1	2	29
Herpangina	191	163	120	97	571	6336
Measles	1	1	2	1	5	288
Mumps	28	27	26	27	108	1510
Cold with exanthems by Enterovirus	13	12	12	18	55	501
Mucocutaneous Lymphnode Syndrome	4	1	1	3	9	88
Acute hemorrhagic conjunctivitis	1	4	5	2	12	55
Epidemic keratoconjunctivitis	19	24	24	20	87	691
Bacterial meningitis		3	1		4	24
Aseptic meningitis	3	3			6	44
Mycoplasma pneumonia	1	2	5	3	11	133
Chlamydial pneumonia (excluding psittacosis)	1				1	11
Measles in adults	2	1		1	4	253

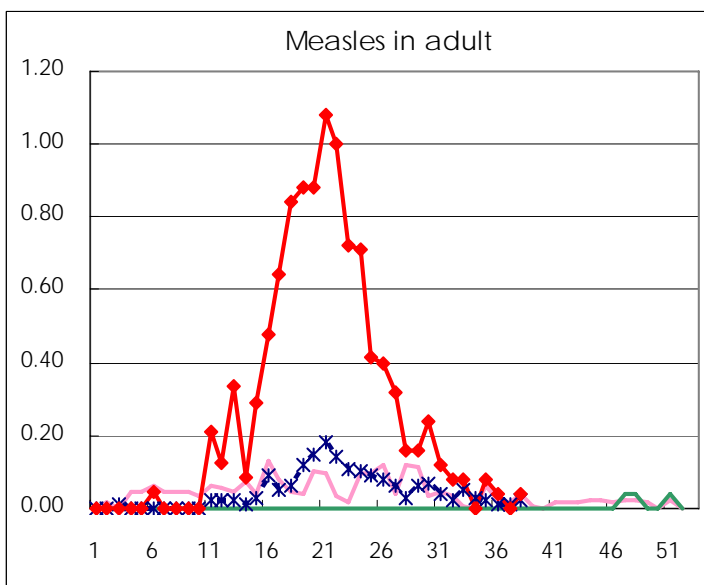
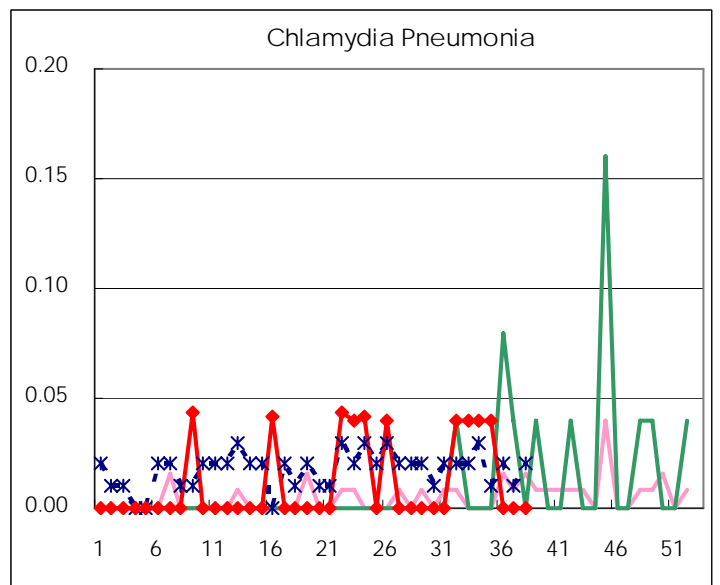
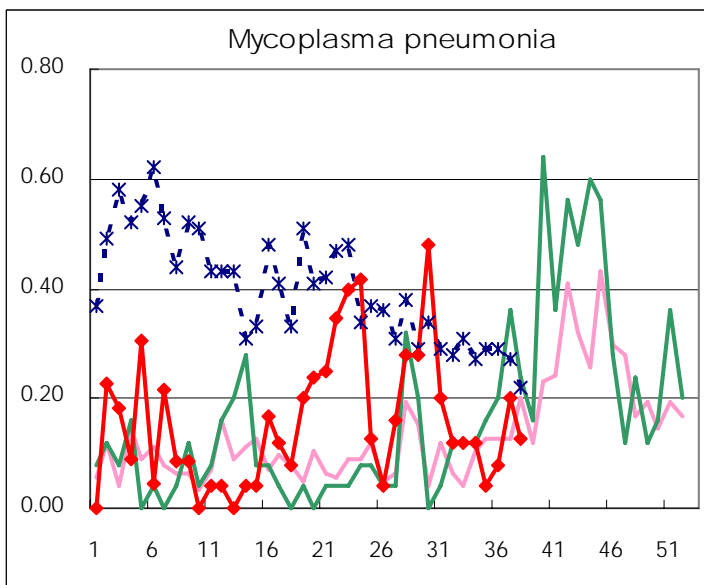
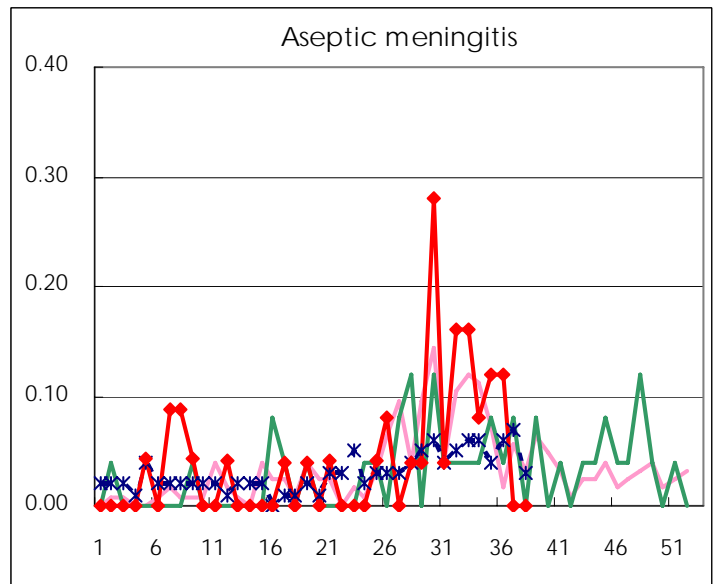
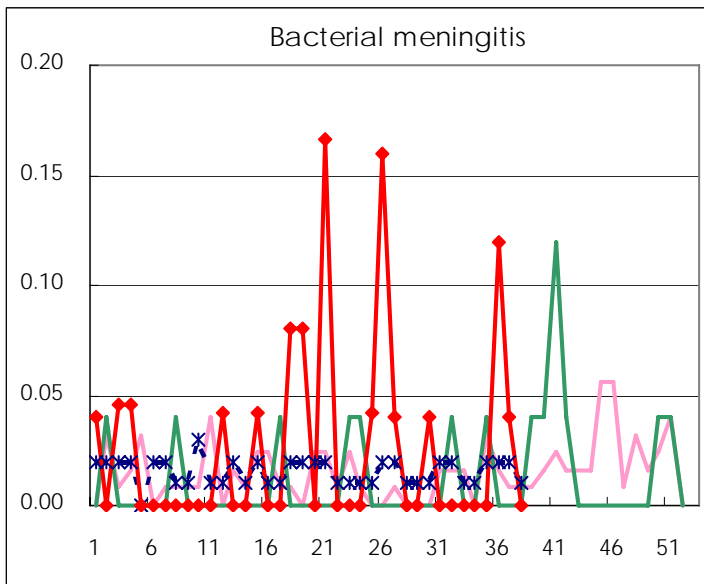
(Blank means 0.)

Disease Trend Graph (weekly reported cases per fixed-point in comparison)









Number of sentinel facilities for weekly reporting		
Types of sentinels	Number of sentinels	Sentinels having reported
Pediatric	150	146
Influenza	290	282
Ophthalmic	39	37
Specially-designated	25	24

Tokyo Metropolitan Government
Infectious Disease Surveillance Center