

---

INFECTIOUS DISEASES WEEKLY REPORT

# TOKYO IDWR

Tokyo Metropolitan Infectious Disease Surveillance Center

## 4 October 2007 / Number 39

### Surveillance System in Tokyo, Japan

The infectious diseases which all physicians must report

All physicians must report to health centers the incidence of the diseases which are shown at page one. Health centers electronically report the individual cases to Tokyo Metropolitan Infectious Disease Surveillance Center.

The infectious diseases required to be reported by the sentinels

The numbers of patients who visit the sentinel clinics or hospitals during a week are reported to health centers in Tokyo. And they electronically report the numbers to Tokyo Metropolitan Infectious Disease Surveillance Center. We have about 400 sentinel clinics and hospitals in Tokyo.

1st Week is early January and 52nd Week is end of December.

Tokyo Metropolitan Institute of Public Health  
Epidemiological Information Office

TEL:81-3-3363-3213 FAX:81-3-5332-7365

e-mail:[idsc@tokyo-eiken.go.jp](mailto:idsc@tokyo-eiken.go.jp)

URL:[idsc.tokyo-eiken.go.jp/](http://idsc.tokyo-eiken.go.jp/)

---

## Number of patients with the diseases which all physicians must report

Category	Diseases	lokvo				Cum 2007	Janan	
		36th	37th	38th	39th		39th	Cum 2007
I	Ebola hemorrhagic fever							
	Crimean-Congo hemorrhagic fever							
	Smallpox							
	South American hemorrhagic fever							
	Plague							
	Marburg disease							
	Lassa fever							
II	Acute poliomyelitis							
	Tuberculosis	75	73	51	35	1946	185	10226
	Diphtheria							
	Severe Acute Respiratory Syndrome(SARS)							
III	Cholera					2		10
	Shigellosis	3	4		1	67	8	383
	Enterohemorrhagic Escherichia coli infection	12	11	6	17	408	105	3402
	Typhoid fever	1				9		34
	Paratyphoid fever					4	2	15
IV	Hepatitis E					2	1	43
	West Nile fever							
	Hepatitis A			1		16		116
	Echinococcosis					3		13
	Yellow fever							
	Psittacosis					1		25
	Omsk hemorrhagic fever							
	Relapsing fever							
	Kyasanur forest disease							
	Q fever				1	1	1	4
	Rabies							
	Coccidioidomycosis					2		3
	Monkeypox							
	Hemorrhagic fever with renal syndrome							
	Western equine encephalitis							
	Tick-borne encephalitis							
	Anthrax							
	Scrub typhus(Tsutsugamushi disease)					2	1	97
	Dengue fever		4		1	18	2	71
	Eastern equine encephalitis							
	Avian influenza virus infection							
	Nipah virus infection							
	Japanese spotted fever						3	53
	Japanese encephalitis						2	3
	Epidemic typhus							
	Hantavirus pulmonary syndrome							
	Herpes B virus infection							
	Glanders							
	Brucellosis							1
	Venezuelan equine encephalitis							
	Hendra virus infection							
	Botulism							2
	Malaria	1	2		1	19		37
Tularemia								
Lyme disease	1				3	1	9	
Lyssavirus infection(excluding rabies)								
Rift valley fever								
Melioidosis								
Legionellosis	1	3	2	2	42	18	471	
Leptospirosis		1			3	1	18	
Rocky mountain spotted fever								

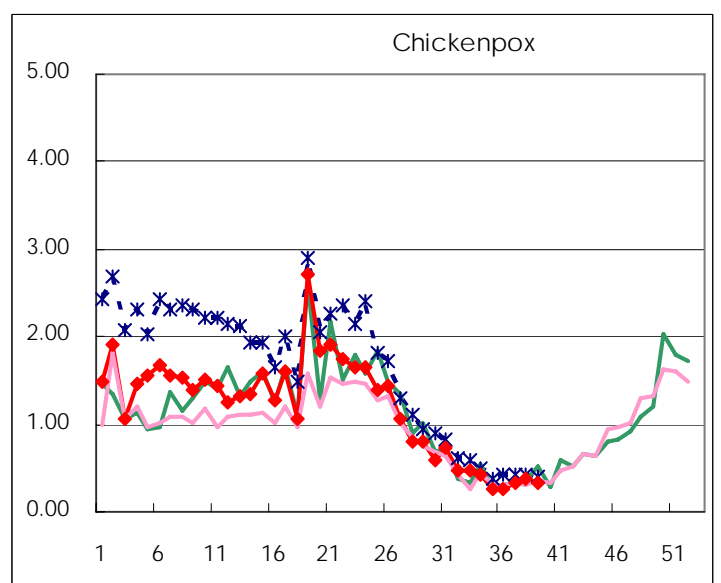
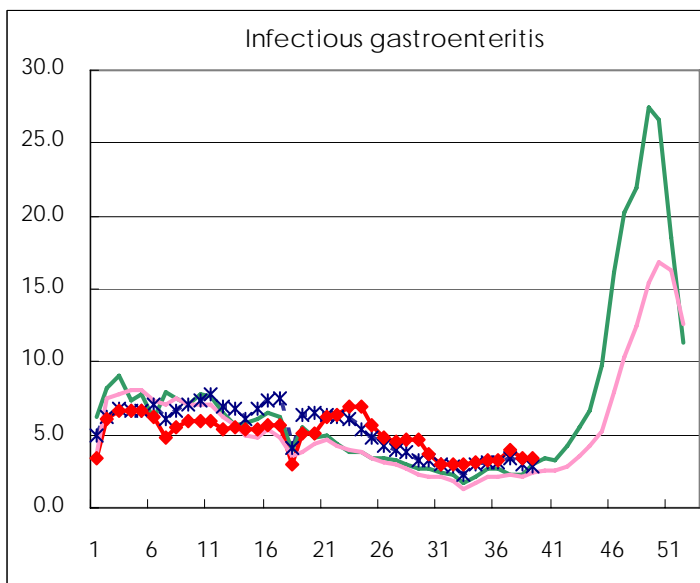
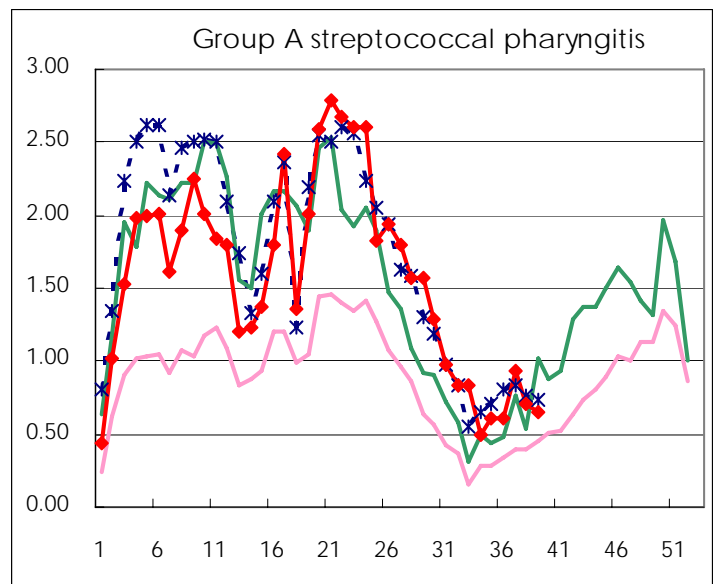
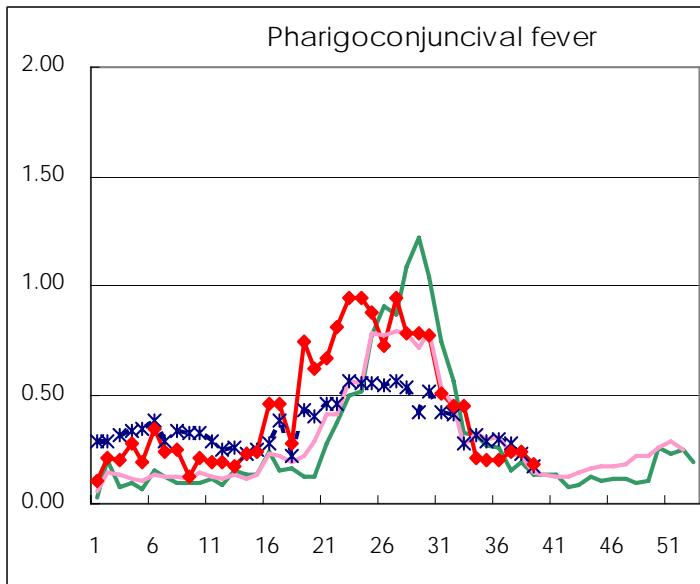
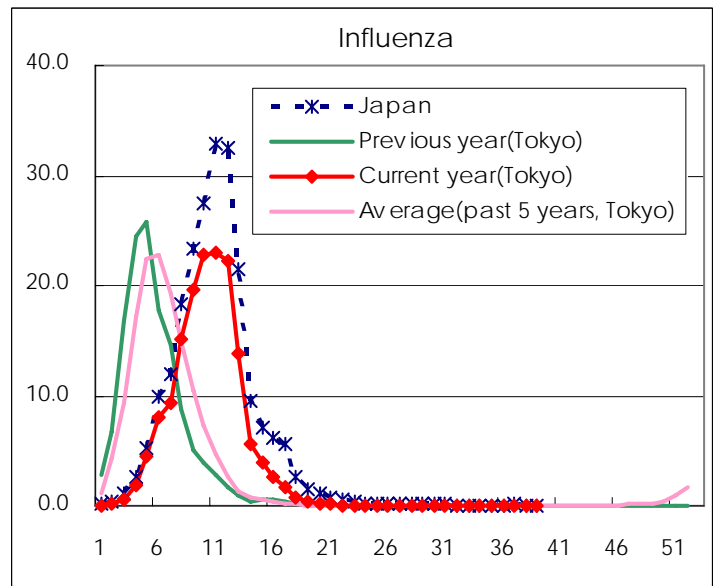
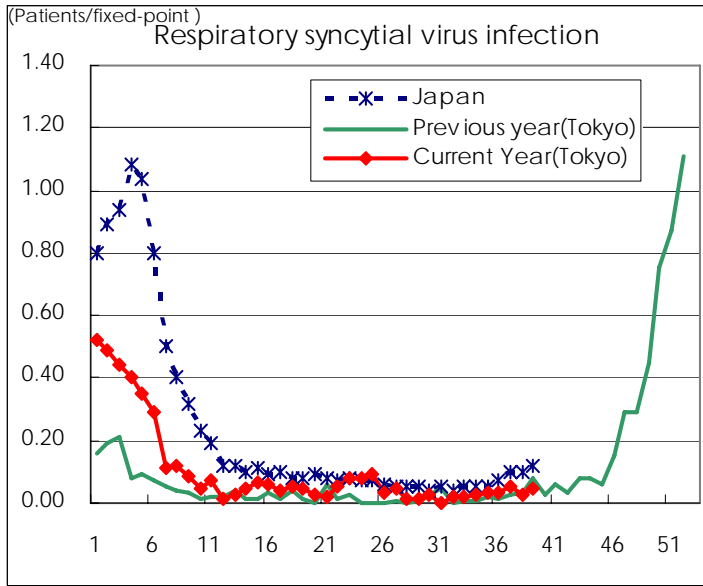
Category	Diseases	Tokyo				Cum 2007	Japan	
		36th	37th	38th	39th		39th	Cum 2007
V	Amebiasis	4	3	1	4	134	8	587
	Viral hepatitis(excluding hepatitis A and E)		1		1	30	1	172
	Acute encephalitis(excluding JE and WNE)		1	1		17	1	176
	Cryptosporidiosis					1		6
	Creutzfeldt-Jakob disease			2		10	2	110
	Severe invasive streptococcal infections(TSLS)					4	2	77
	Acquired immunodeficiency syndrome (AIDS)	6	6	10	15	370	16	1081
	Giardiasis	1			1	13	1	38
	Meningococcal meningitis			1		2		13
	Congenital rubella syndrome							
	Syphilis	3	5	4	3	111	8	512
	Tetanus					1	2	71
	Vancomycin-resistant S. aureus infection							
	Vancomycin-resistant Enterococcus infection				1	12		55
designated	Influenza (H5N1)							

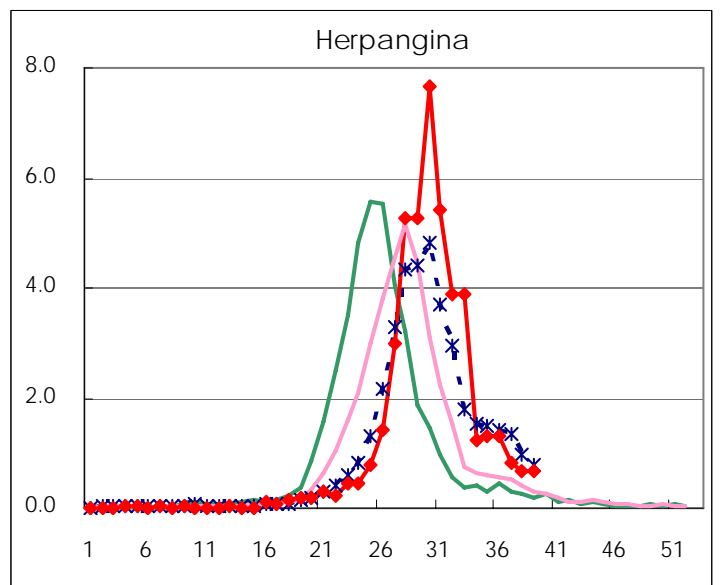
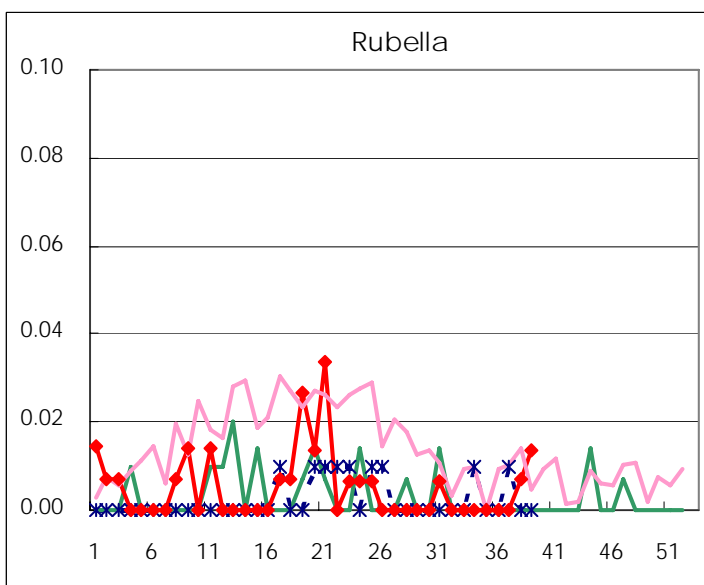
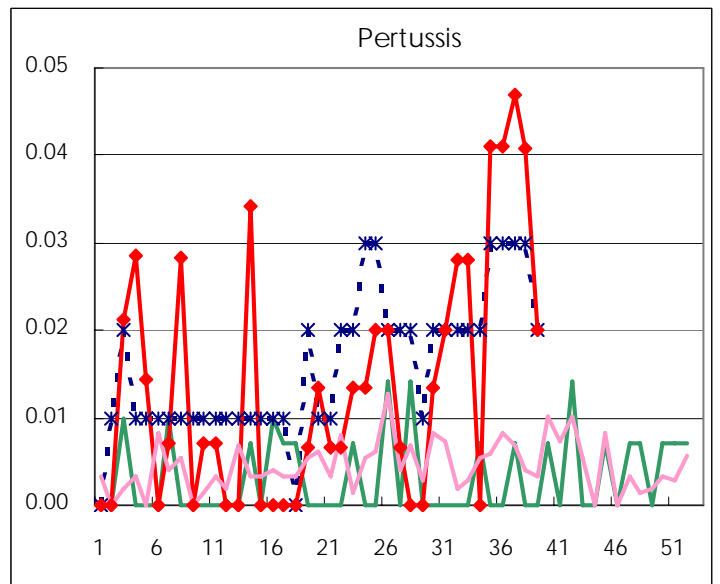
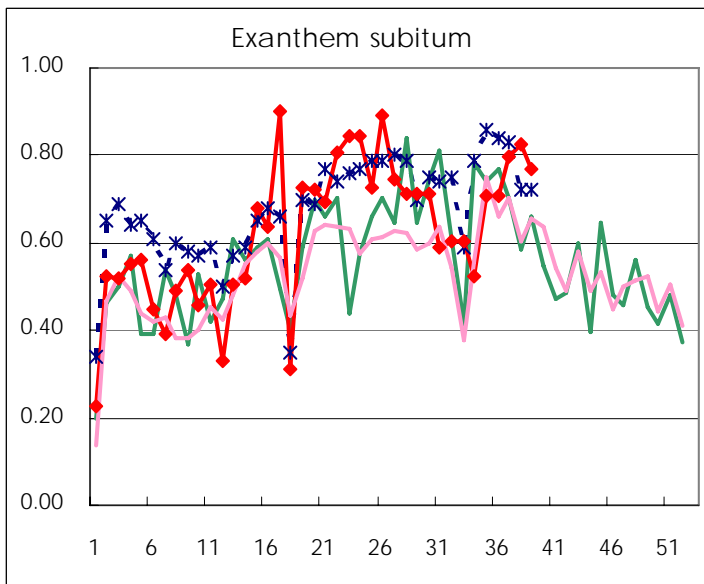
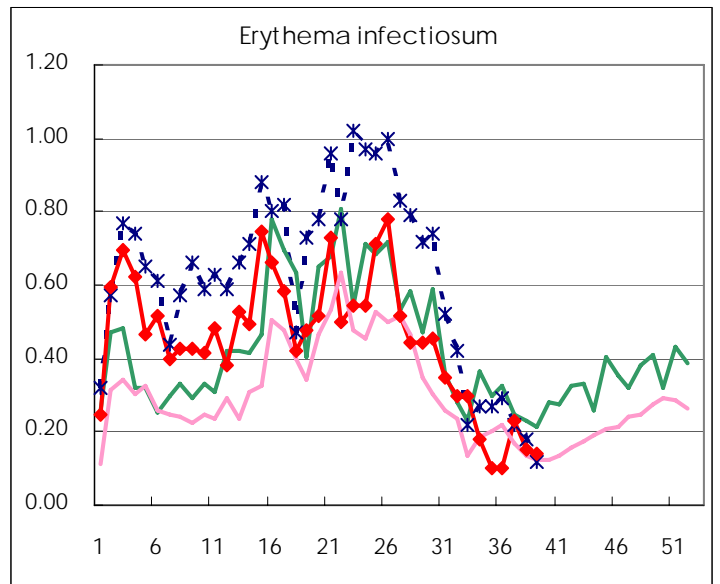
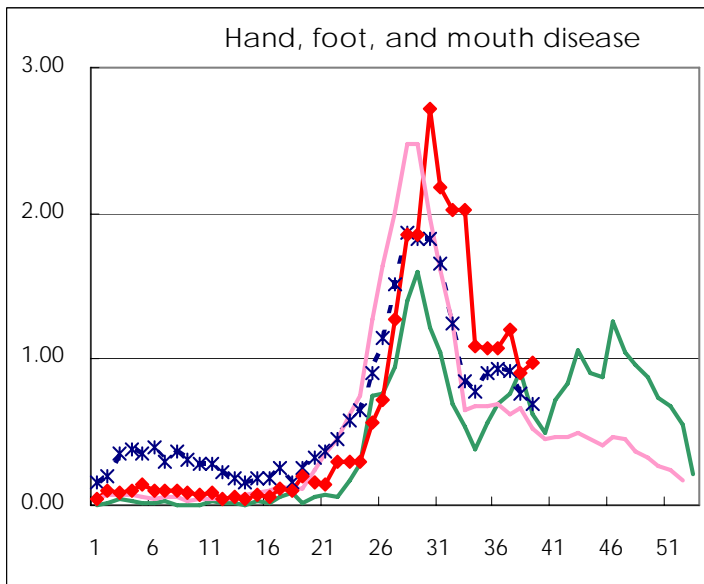
Number of patients with the diseases to be reported  
by the designated clinics and hospitals

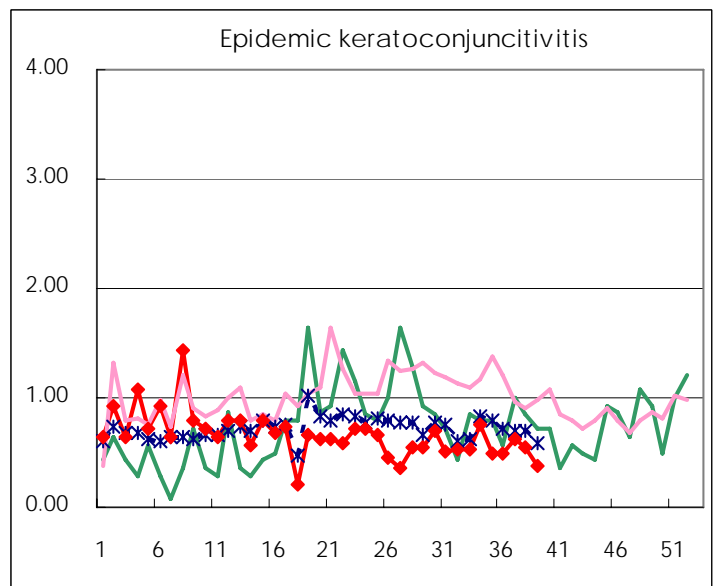
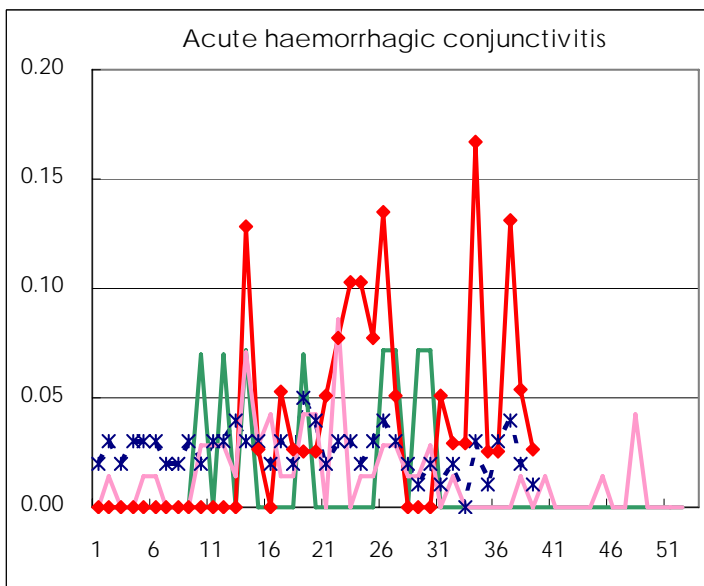
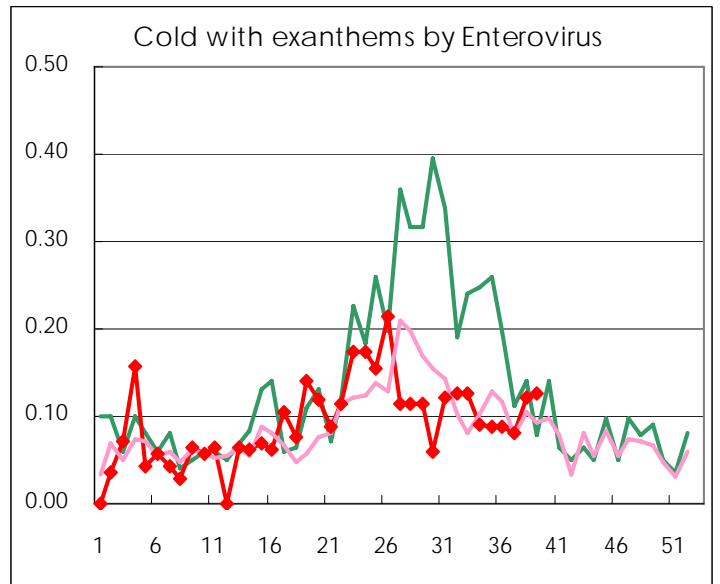
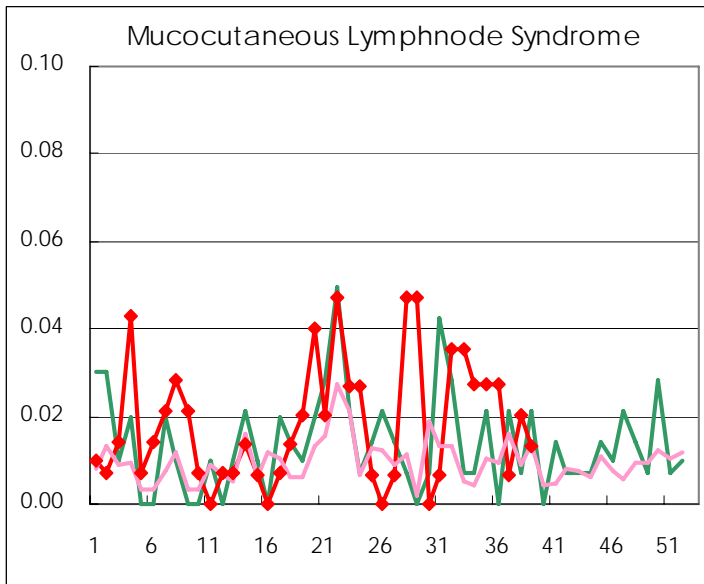
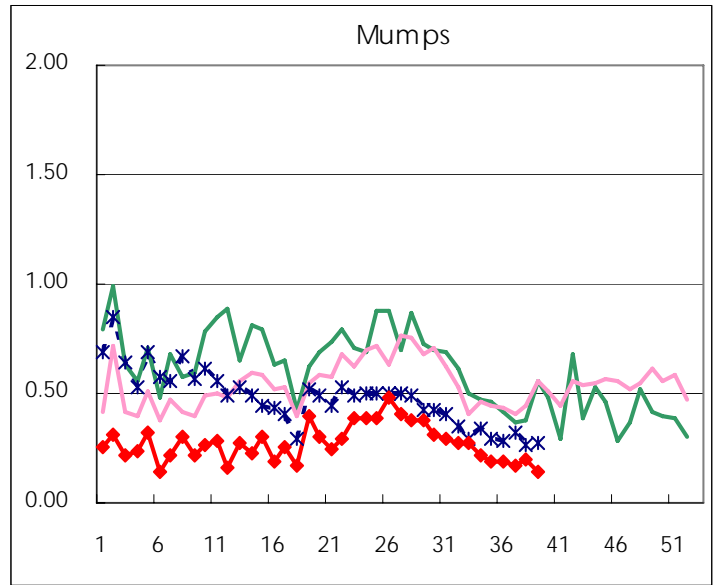
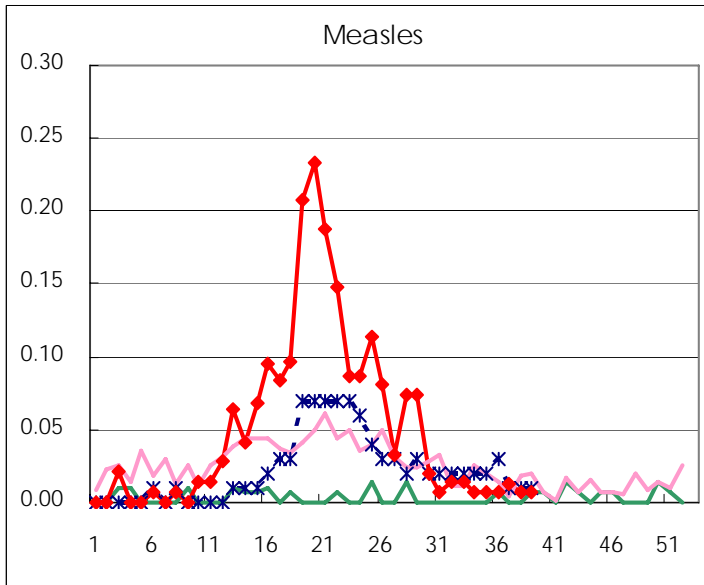
Diseases	2007				4wks total	Cum 2007
	36th	37th	38th	39th		
Respiratory syncytial virus infection	11	8	4	7	30	572
Influenza	2	1	14	16	33	43824
Pharyngoconjunctival fever	28	36	35	27	126	2370
Group A streptococcal pharyngitis	112	140	104	98	454	8904
Infectious gastroenteritis	465	596	494	511	2,066	27759
Chickenpox	49	48	56	48	201	6904
Hand, foot, and mouth disease	164	179	134	146	623	3560
Erythema infectiosum	35	34	22	21	112	2571
Exanthem subitum	107	119	121	115	462	3515
Pertussis	7	7	6	3	23	70
Rubella	1		1	2	4	31
Herpangina	163	120	97	100	480	6436
Measles	1	2	1	1	5	289
Mumps	27	26	29	21	103	1533
Cold with exanthems by Enterovirus	12	12	18	19	61	520
Mucocutaneous Lymphnode Syndrome	1	1	3	2	7	90
Acute hemorrhagic conjunctivitis	4	5	2	1	12	56
Epidemic keratoconjunctivitis	24	24	20	14	82	705
Bacterial meningitis	3	1			4	24
Aseptic meningitis	3				3	44
Mycoplasma pneumonia	2	5	5	6	18	141
Chlamydial pneumonia (excluding psittacosis)						11
Measles in adults	1		1		2	253

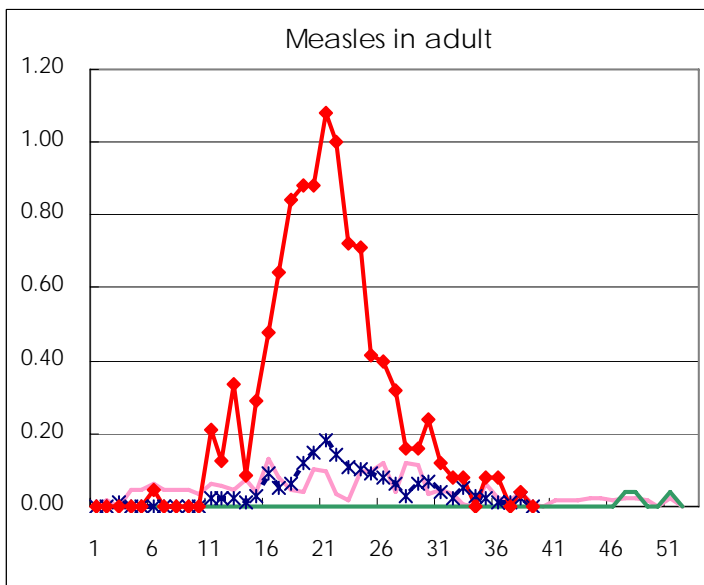
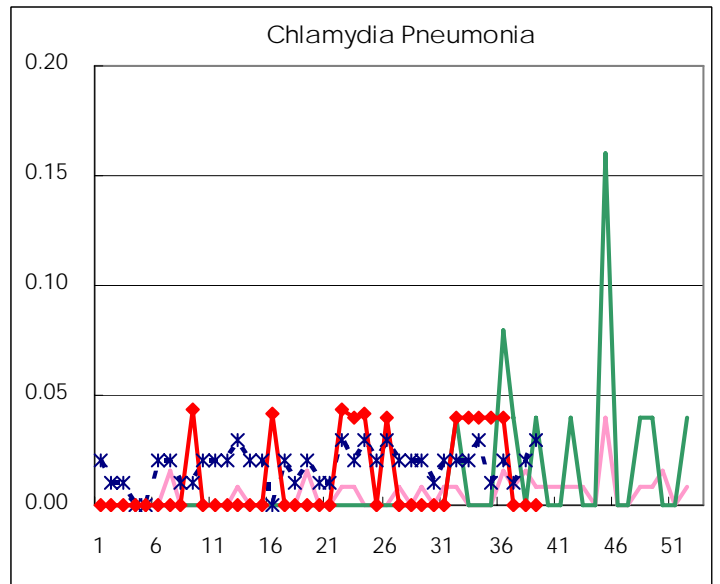
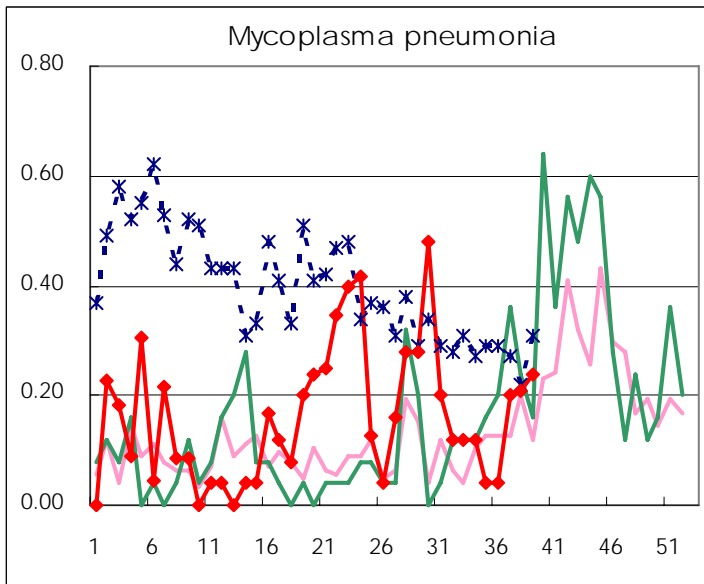
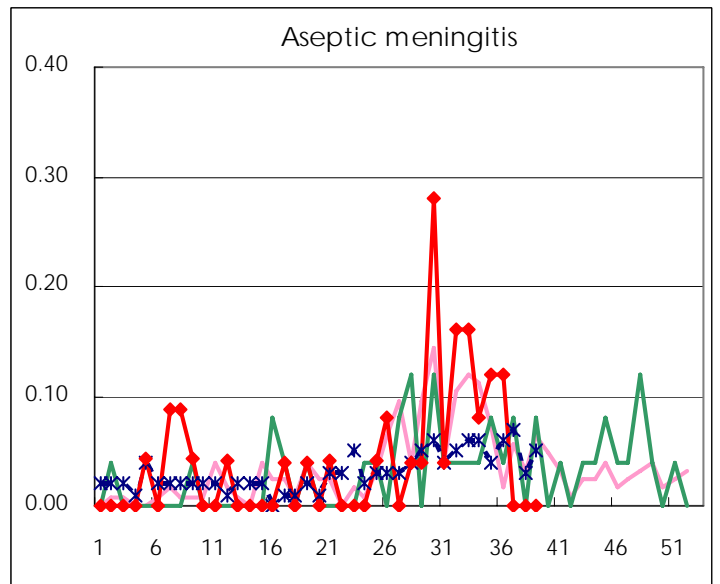
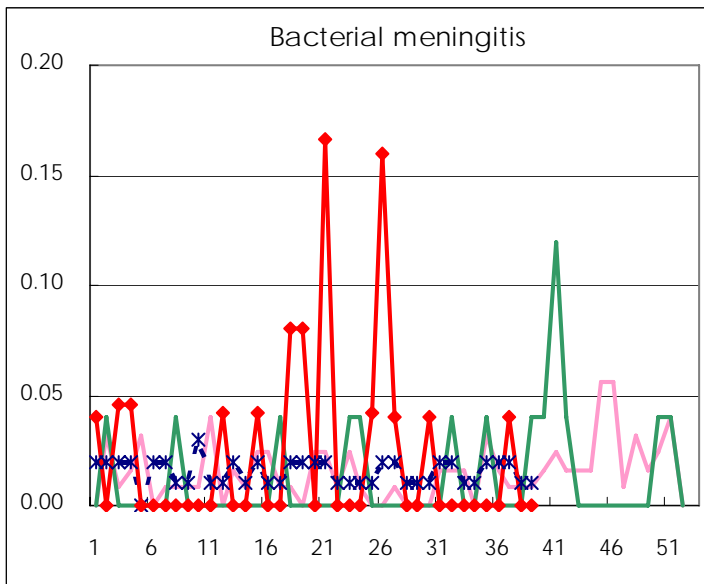
( Blank means 0. )

# Disease Trend Graph (weekly reported cases per fixed-point in comparison)









Number of sentinel facilities for weekly reporting		
Types of sentinels	Number of sentinels	Sentinels having reported
Pediatric	150	150
Influenza	290	288
Ophthalmic	39	38
Specially-designated	25	25

Tokyo Metropolitan Government  
Infectious Disease Surveillance Center