
INFECTIOUS DISEASES WEEKLY REPORT

TOKYO IDWR

Tokyo Metropolitan Infectious Disease Surveillance Center

11 October 2007 / Number 40

Surveillance System in Tokyo, Japan

The infectious diseases which all physicians must report

All physicians must report to health centers the incidence of the diseases which are shown at page one. Health centers electronically report the individual cases to Tokyo Metropolitan Infectious Disease Surveillance Center.

The infectious diseases required to be reported by the sentinels

The numbers of patients who visit the sentinel clinics or hospitals during a week are reported to health centers in Tokyo. And they electronically report the numbers to Tokyo Metropolitan Infectious Disease Surveillance Center. We have about 400 sentinel clinics and hospitals in Tokyo.

1st Week is early January and 52nd Week is end of December.

Tokyo Metropolitan Institute of Public Health
Epidemiological Information Office

TEL:81-3-3363-3213 FAX:81-3-5332-7365

e-mail:idsc@tokyo-eiken.go.jp

URL:idsc.tokyo-eiken.go.jp/

Number of patients with the diseases which all physicians must report

Category	Diseases	lokvo				Cum 2007	Janan	
		37th	38th	39th	40th		40th	Cum 2007
I	Ebola hemorrhagic fever							
	Crimean-Congo hemorrhagic fever							
	Smallpox							
	South American hemorrhagic fever							
	Plague							
	Marburg disease							
	Lassa fever							
II	Acute poliomyelitis							
	Tuberculosis	79	54	52	57	2031	227	10642
	Diphtheria							
	Severe Acute Respiratory Syndrome(SARS)							
III	Cholera					2		10
	Shigellosis	4		1	3	70	7	391
	Enterohemorrhagic Escherichia coli infection	11	6	17	8	416	212	3647
	Typhoid fever				1	10	3	37
	Paratyphoid fever					4		15
IV	Hepatitis E					2		44
	West Nile fever							
	Hepatitis A		1		1	17	2	121
	Echinococcosis					3		13
	Yellow fever							
	Psittacosis					1		25
	Omsk hemorrhagic fever							
	Relapsing fever							
	Kyasanur forest disease							
	Q fever			1		1		4
	Rabies							
	Coccidioidomycosis					2		3
	Monkeypox							
	Hemorrhagic fever with renal syndrome							
	Western equine encephalitis							
	Tick-borne encephalitis							
	Anthrax							
	Scrub typhus(Tsutsugamushi disease)					2		98
	Dengue fever	4		1		18	1	72
	Eastern equine encephalitis							
	Avian influenza virus infection							
	Nipah virus infection							
	Japanese spotted fever							55
	Japanese encephalitis							3
	Epidemic typhus							
	Hantavirus pulmonary syndrome							
	Herpes B virus infection							
	Glanders							
	Brucellosis							1
	Venezuelan equine encephalitis							
	Hendra virus infection							
	Botulism							2
	Malaria	2		2		20		38
Tularemia								
Lyme disease					3	1	10	
Lyssavirus infection(excluding rabies)								
Rift valley fever								
Melioidosis								
Legionellosis	3	2	2	1	43	11	486	
Leptospirosis	1				3		19	
Rocky mountain spotted fever								

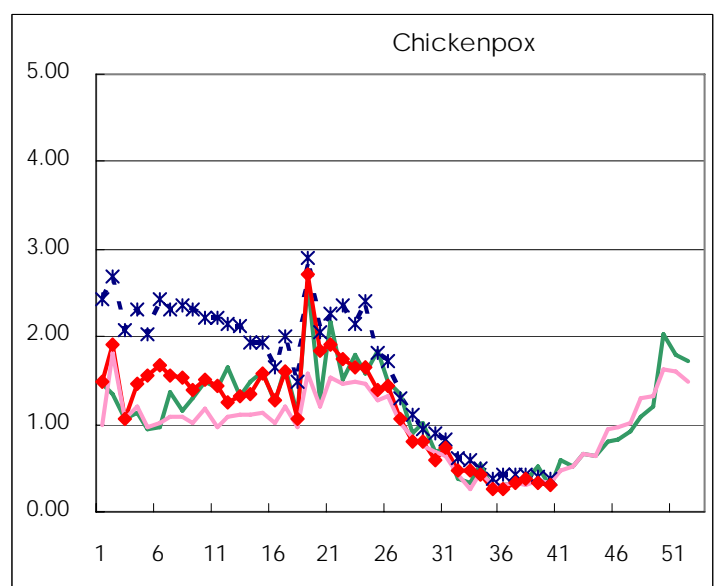
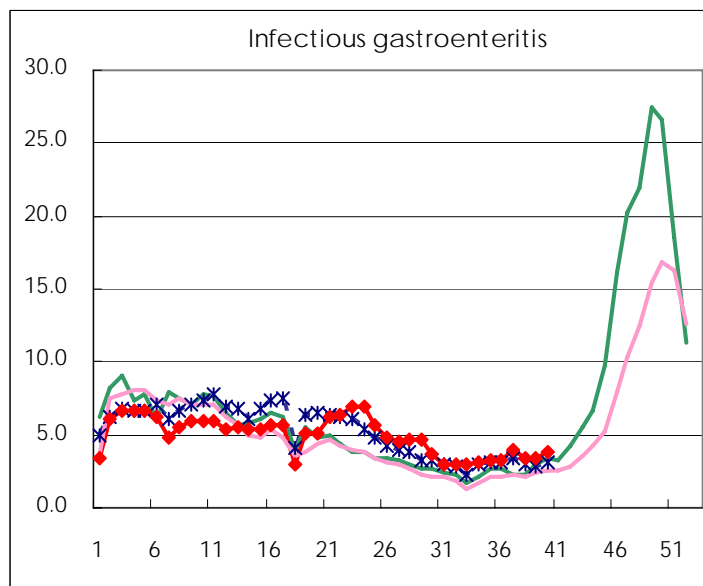
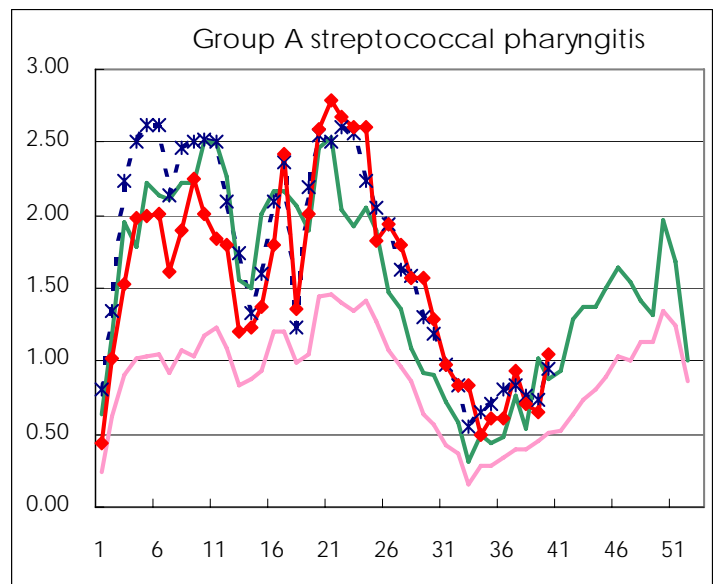
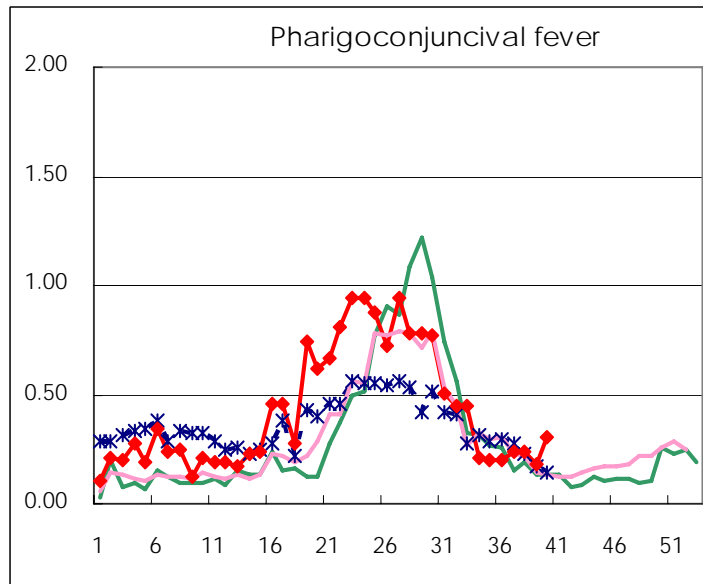
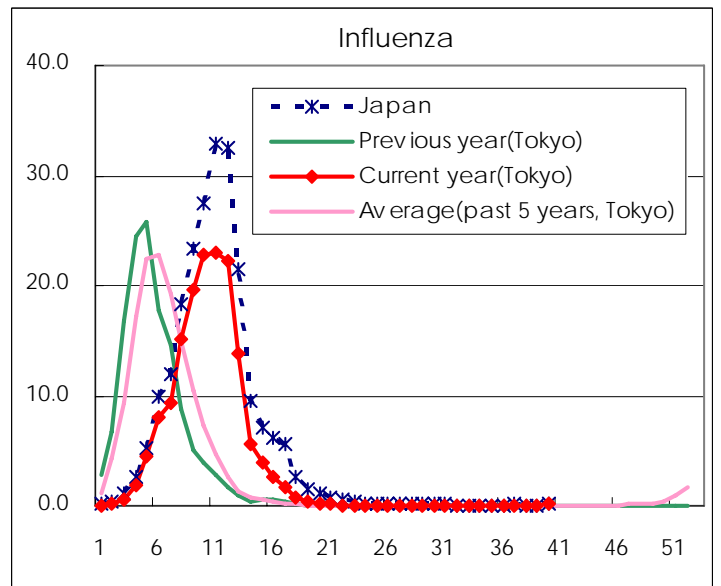
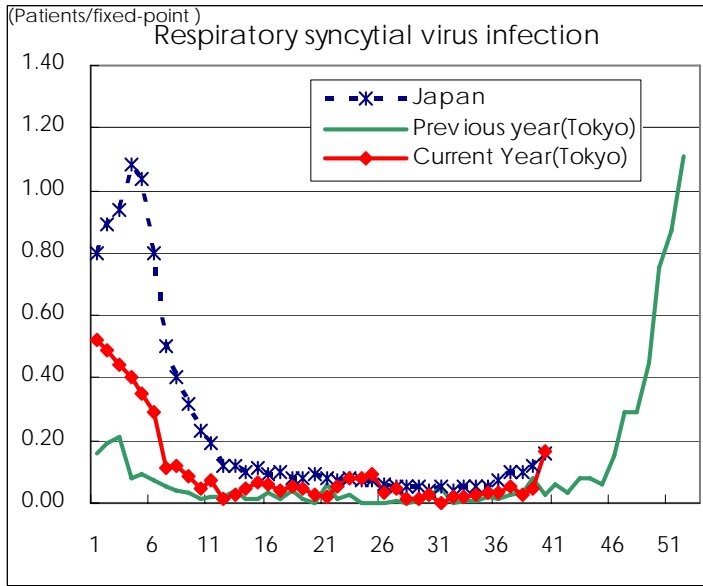
Category	Diseases	Tokyo				Cum 2007	Japan	
		37th	38th	39th	40th		40th	Cum 2007
V	Amebiasis	3	1	4	3	137	4	596
	Viral hepatitis(excluding hepatitis A and E)	1		1	2	32	2	176
	Acute encephalitis(excluding JE and WNE)	1	1			17		178
	Cryptosporidiosis					1		6
	Creutzfeldt-Jakob disease		2		1	11	2	112
	Severe invasive streptococcal infections(TSLS)				1	5	1	79
	Acquired immunodeficiency syndrome (AIDS)	6	10	15	15	385	12	1109
	Giardiasis			1		13	1	39
	Meningococcal meningitis		1			2		13
	Congenital rubella syndrome							
	Syphilis	5	4	3	7	118	10	532
	Tetanus					1	2	73
	Vancomycin-resistant S. aureus infection							
	Vancomycin-resistant Enterococcus infection			1		12	3	58
designated	Influenza (H5N1)							

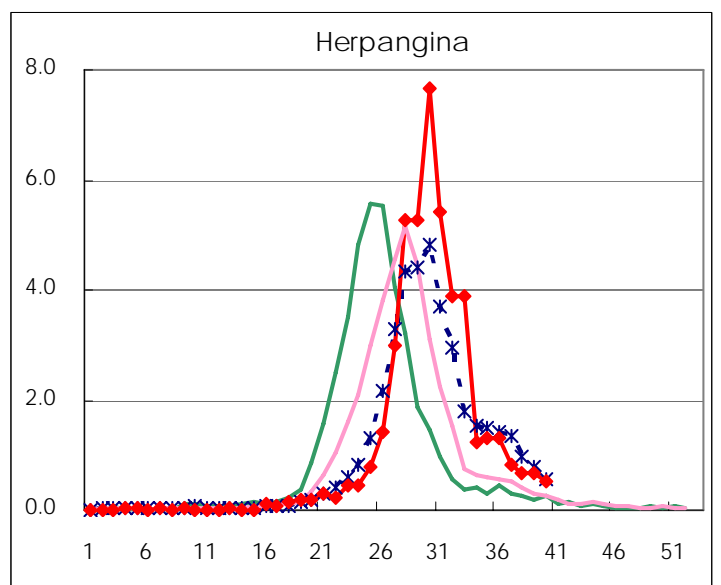
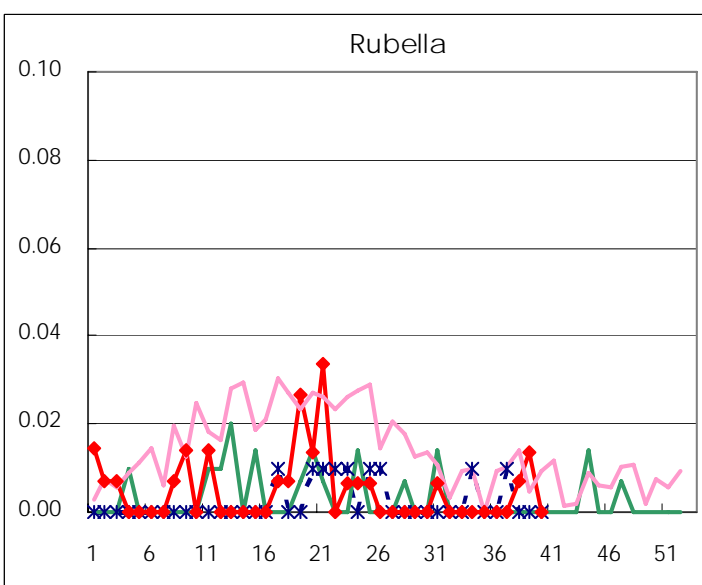
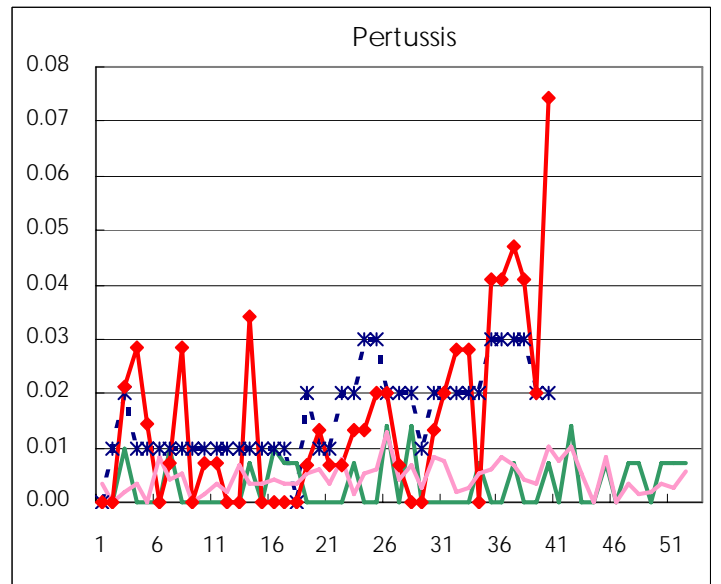
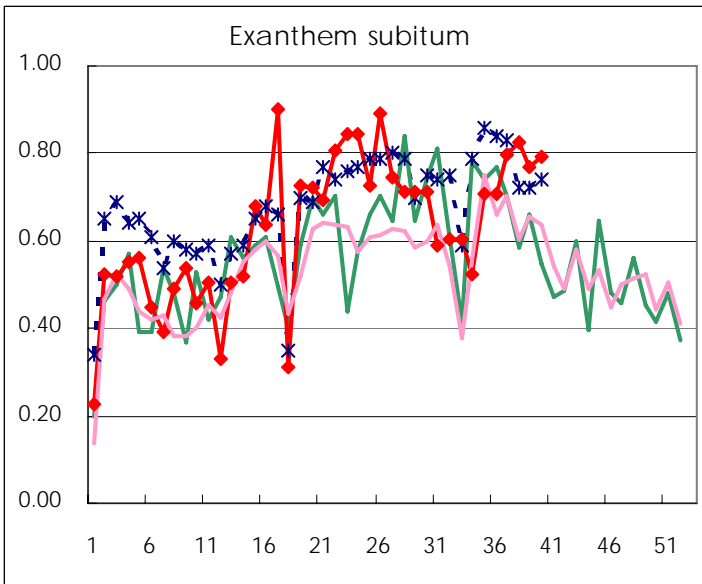
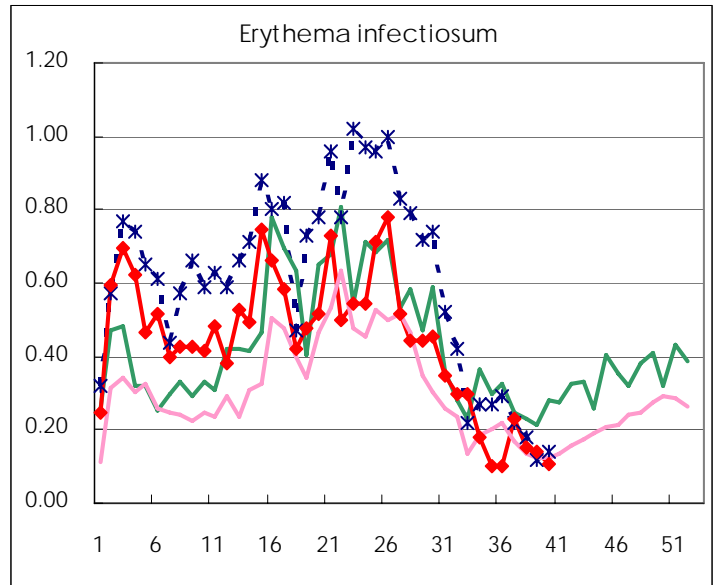
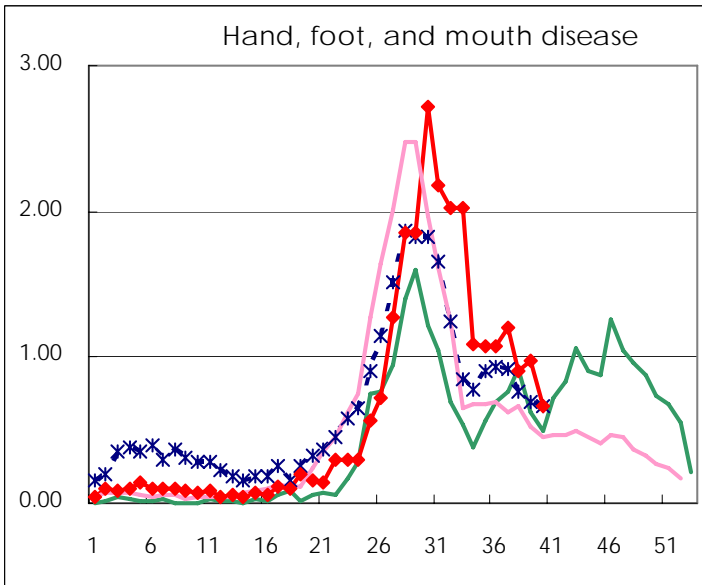
Number of patients with the diseases to be reported
by the designated clinics and hospitals

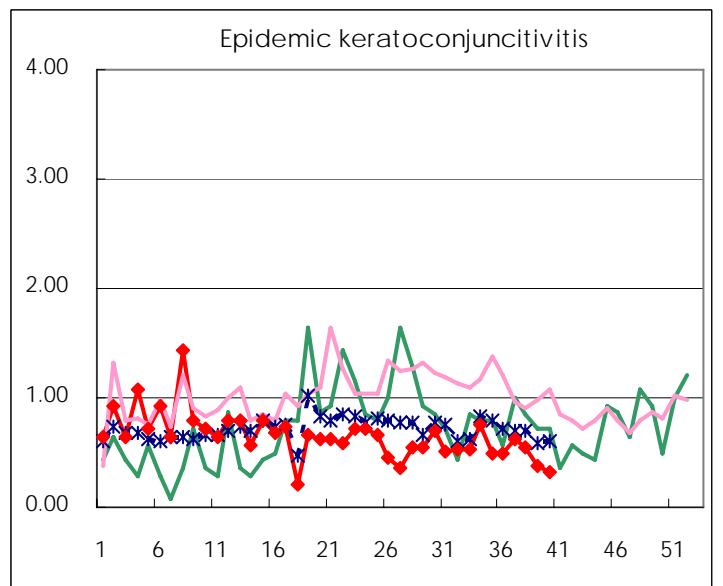
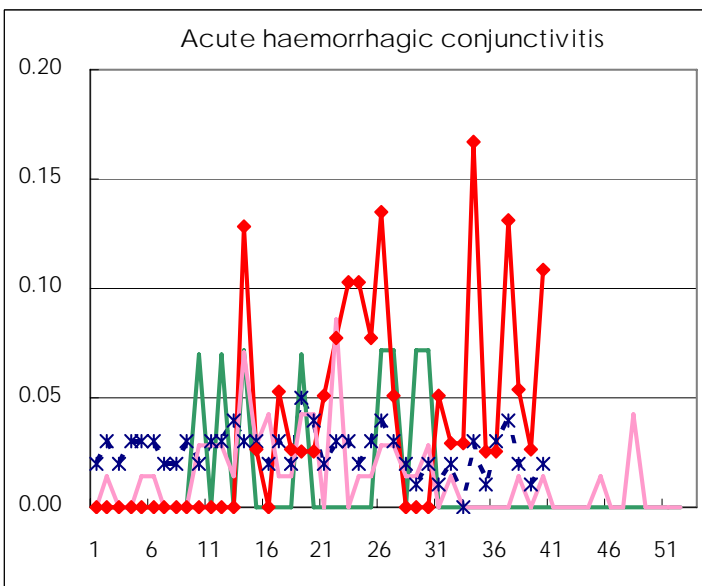
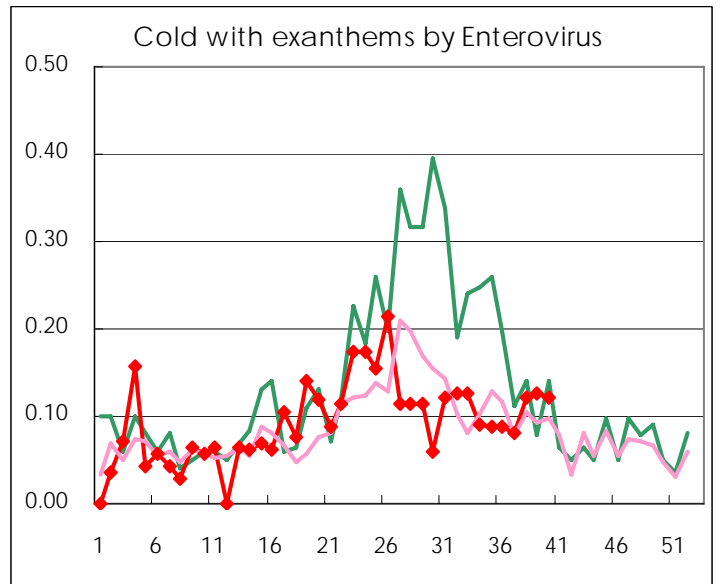
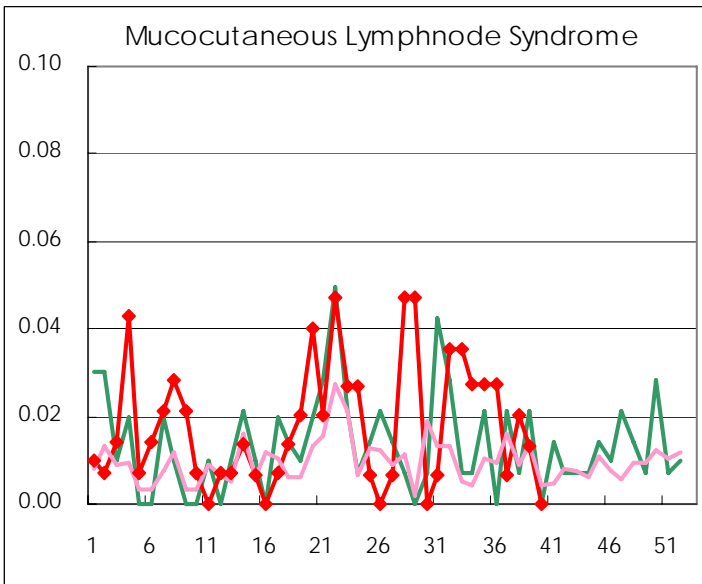
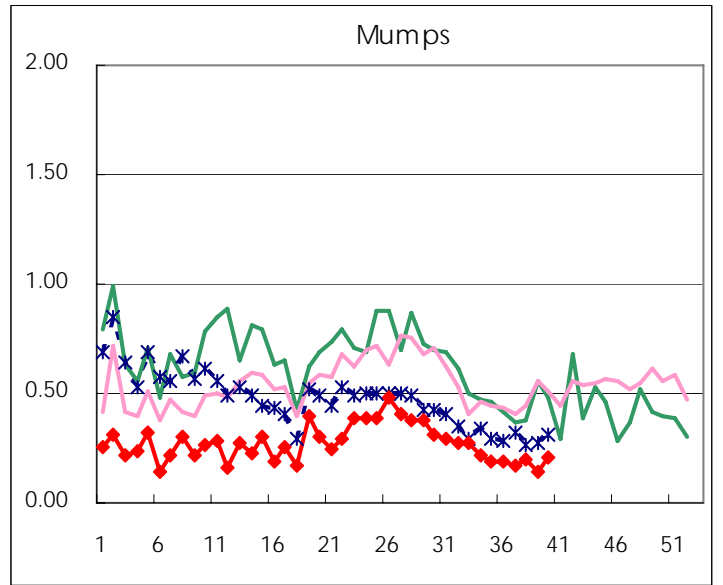
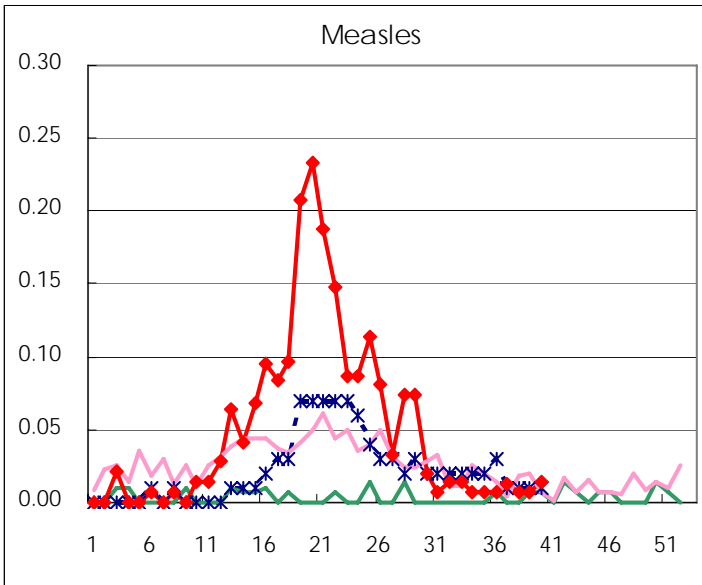
Diseases	2007				4wks total	Cum 2007
	37th	38th	39th	40th		
Respiratory syncytial virus infection	8	4	7	24	43	596
Influenza	1	14	16	32	63	43856
Pharyngoconjunctival fever	36	35	27	45	143	2415
Group A streptococcal pharyngitis	140	104	98	154	496	9058
Infectious gastroenteritis	596	494	511	563	2,164	28322
Chickenpox	48	56	48	45	197	6949
Hand, foot, and mouth disease	179	134	146	99	558	3659
Erythema infectiosum	34	22	21	16	93	2587
Exanthem subitum	119	121	115	117	472	3632
Pertussis	7	6	3	11	27	81
Rubella		1	2		3	31
Herpangina	120	97	100	75	392	6511
Measles	2	1	1	2	6	291
Mumps	26	29	21	31	107	1564
Cold with exanthems by Enterovirus	12	18	19	18	67	538
Mucocutaneous Lymphnode Syndrome	1	3	2		6	90
Acute hemorrhagic conjunctivitis	5	2	1	4	12	60
Epidemic keratoconjunctivitis	24	20	14	12	70	717
Bacterial meningitis	1				1	24
Aseptic meningitis				1	1	45
Mycoplasma pneumonia	5	5	6	3	19	144
Chlamydial pneumonia (excluding psittacosis)				2	2	13
Measles in adults		1			1	253

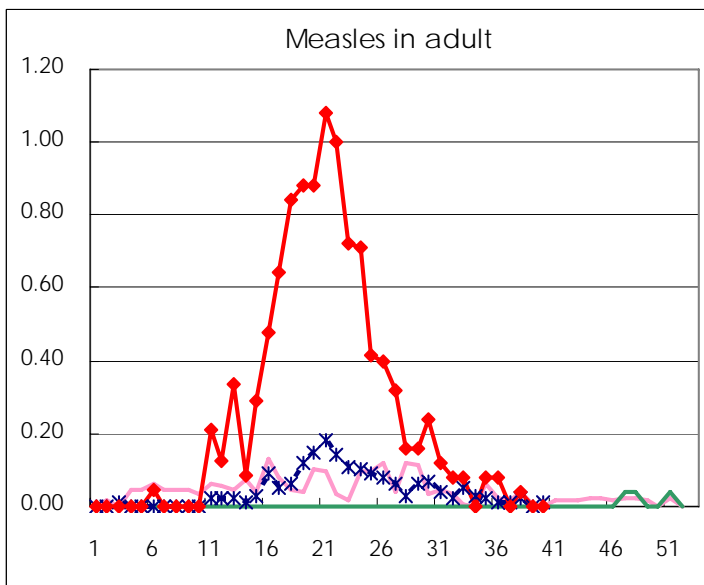
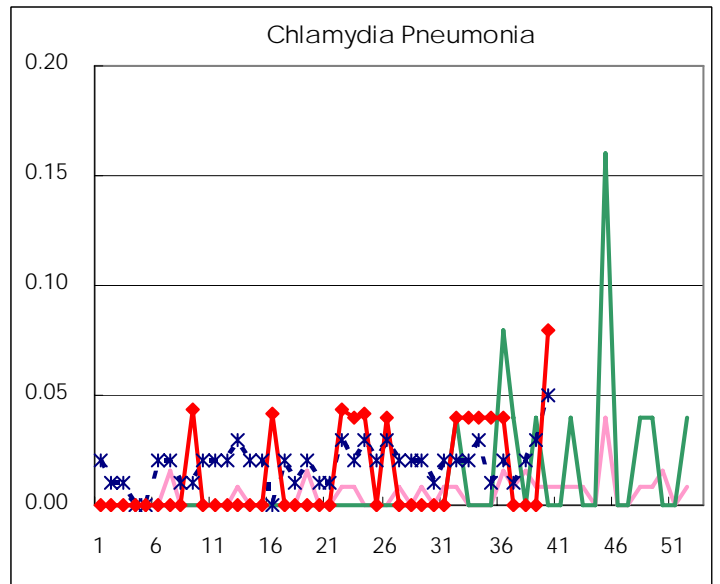
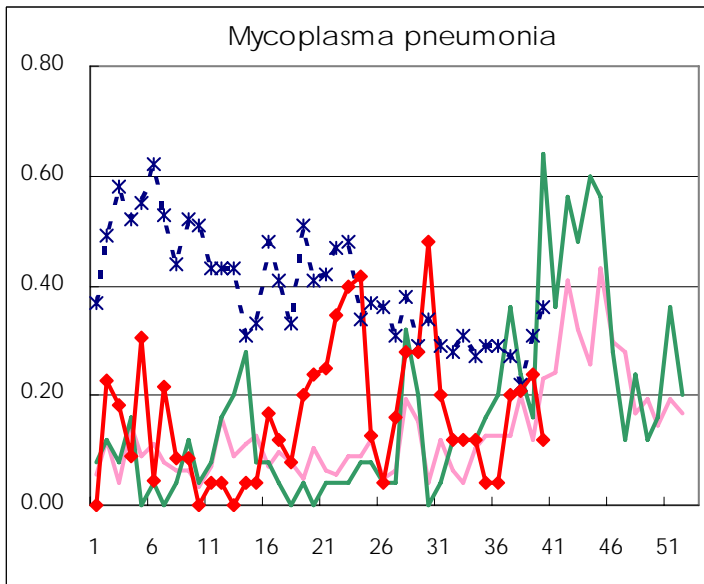
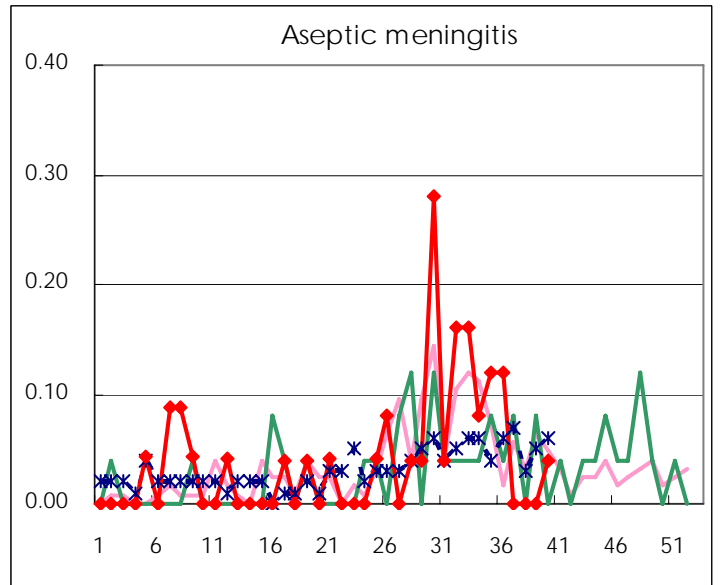
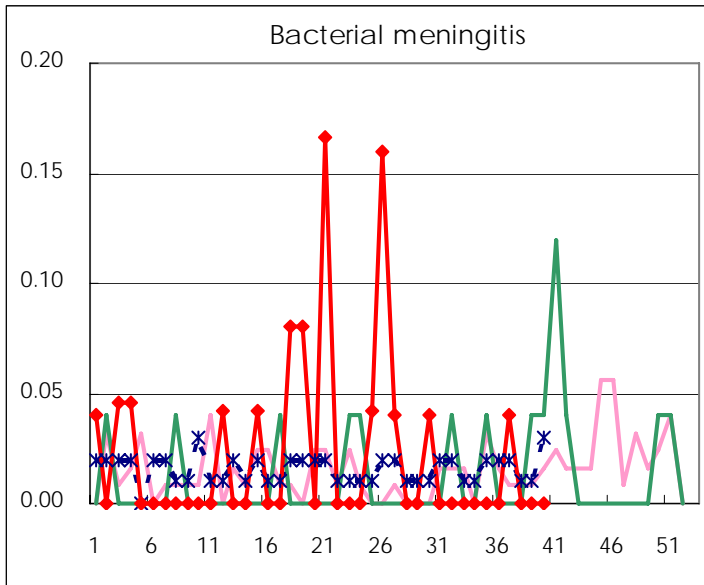
(Blank means 0.)

Disease Trend Graph (weekly reported cases per fixed-point in comparison)









Number of sentinel facilities for weekly reporting		
Types of sentinels	Number of sentinels	Sentinels having reported
Pediatric	150	148
Influenza	290	286
Ophthalmic	39	37
Specially-designated	25	25

Tokyo Metropolitan Government
Infectious Disease Surveillance Center