
INFECTIOUS DISEASES WEEKLY REPORT

TOKYO IDWR

Tokyo Metropolitan Infectious Disease Surveillance Center

18 October 2007 / Number 41

Surveillance System in Tokyo, Japan

The infectious diseases which all physicians must report

All physicians must report to health centers the incidence of the diseases which are shown at page one. Health centers electronically report the individual cases to Tokyo Metropolitan Infectious Disease Surveillance Center.

The infectious diseases required to be reported by the sentinels

The numbers of patients who visit the sentinel clinics or hospitals during a week are reported to health centers in Tokyo. And they electronically report the numbers to Tokyo Metropolitan Infectious Disease Surveillance Center. We have about 400 sentinel clinics and hospitals in Tokyo.

1st Week is early January and 52nd Week is end of December.

Tokyo Metropolitan Institute of Public Health
Epidemiological Information Office

TEL:81-3-3363-3213 FAX:81-3-5332-7365

e-mail:idsc@tokyo-eiken.go.jp

URL:idsc.tokyo-eiken.go.jp/

Number of patients with the diseases which all physicians must report

Category	Diseases	lokvo				Cum 2007	Janan	
		38th	39th	40th	41th		41th	Cum 2007
I	Ebola hemorrhagic fever							
	Crimean-Congo hemorrhagic fever							
	Smallpox							
	South American hemorrhagic fever							
	Plague							
	Marburg disease							
	Lassa fever							
II	Acute poliomyelitis							
	Tuberculosis	56	56	73	50	2107	223	11122
	Diphtheria							
	Severe Acute Respiratory Syndrome(SARS)							
III	Cholera					2	1	11
	Shigellosis		1	3		70		392
	Enterohemorrhagic Escherichia coli infection	6	17	8	6	422	166	3857
	Typhoid fever			1		10	1	38
	Paratyphoid fever					4		15
IV	Hepatitis E					2	2	47
	West Nile fever							
	Hepatitis A	1		1		17		122
	Echinococcosis					3		13
	Yellow fever							
	Psittacosis					1	1	26
	Omsk hemorrhagic fever							
	Relapsing fever							
	Kyasanur forest disease							
	Q fever		1			1		4
	Rabies							
	Coccidioidomycosis					2		3
	Monkeypox							
	Hemorrhagic fever with renal syndrome							
	Western equine encephalitis							
	Tick-borne encephalitis							
	Anthrax							
	Scrub typhus(Tsutsugamushi disease)					2	1	99
	Dengue fever		1		2	20	3	75
	Eastern equine encephalitis							
	Avian influenza virus infection							
	Nipah virus infection							
	Japanese spotted fever						6	65
	Japanese encephalitis							3
	Epidemic typhus							
	Hantavirus pulmonary syndrome							
	Herpes B virus infection							
	Glanders							
	Brucellosis							1
	Venezuelan equine encephalitis							
	Hendra virus infection							
	Botulism							2
	Malaria		2		1	21	3	41
Tularemia								
Lyme disease					3		10	
Lyssavirus infection(excluding rabies)								
Rift valley fever								
Melioidosis								
Legionellosis	2	2	1	1	44	9	499	
Leptospirosis					3		20	
Rocky mountain spotted fever								

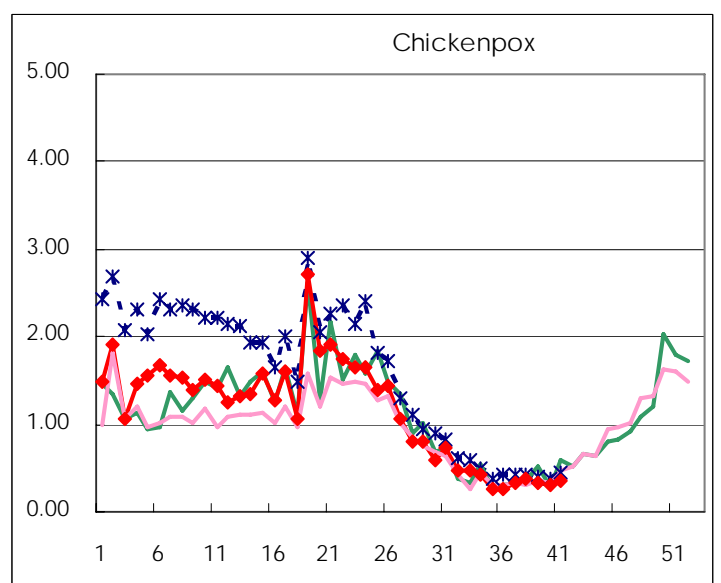
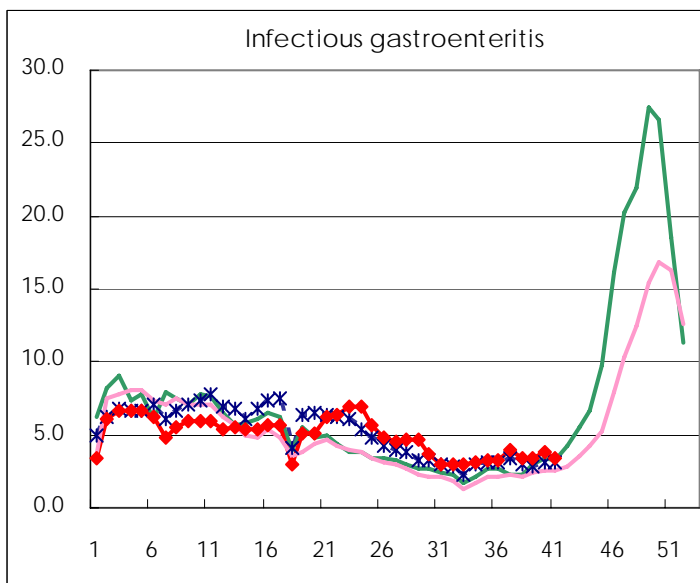
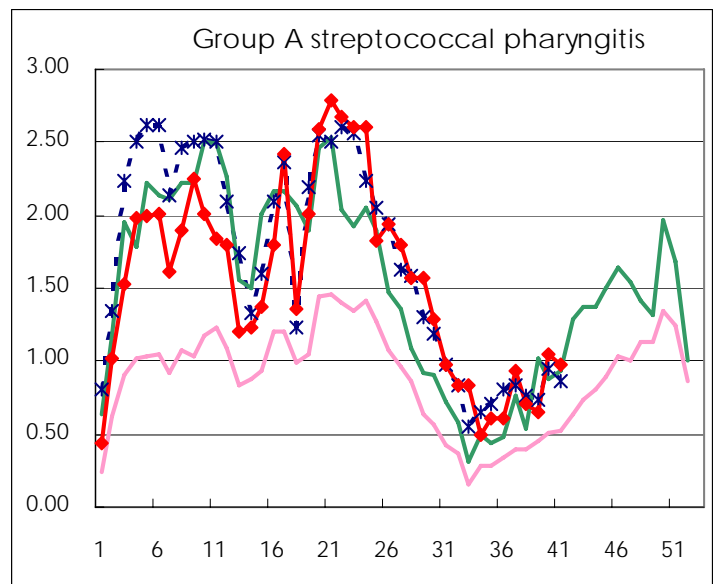
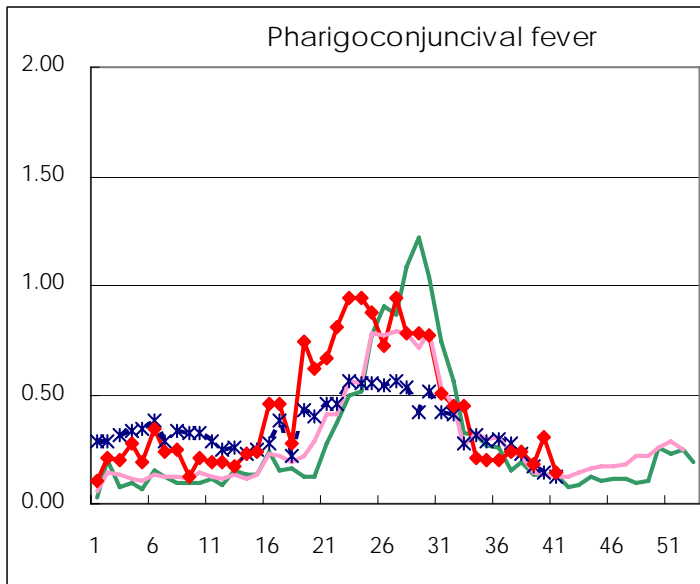
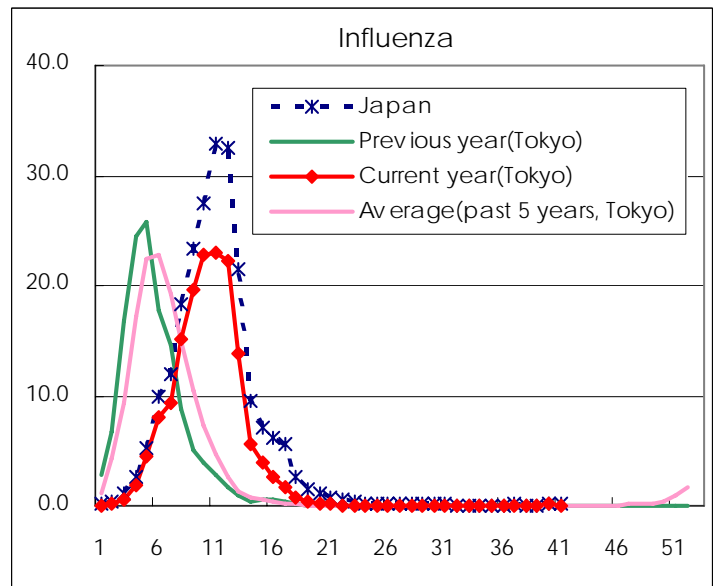
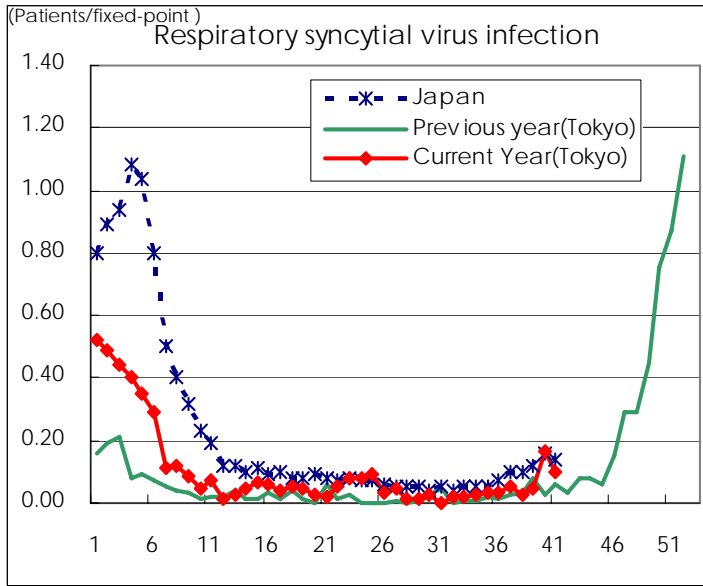
Category	Diseases	Tokyo				Cum 2007	Japan	
		38th	39th	40th	41th		41th	Cum 2007
V	Amebiasis	1	4	2	2	138	4	608
	Viral hepatitis(excluding hepatitis A and E)		1	2		32	4	180
	Acute encephalitis(excluding JE and WNE)	1				17		181
	Cryptosporidiosis					1		6
	Creutzfeldt-Jakob disease	2		1		11	1	113
	Severe invasive streptococcal infections(TSLS)			1		5		79
	Acquired immunodeficiency syndrome (AIDS)	10	15	14	13	397	16	1140
	Giardiasis		1			13		39
	Meningococcal meningitis	1				2		13
	Congenital rubella syndrome							
	Syphilis	4	3	6	3	120	12	553
	Tetanus					1	1	75
	Vancomycin-resistant S. aureus infection							
	Vancomycin-resistant Enterococcus infection		1			12	1	59
designated	Influenza (H5N1)							

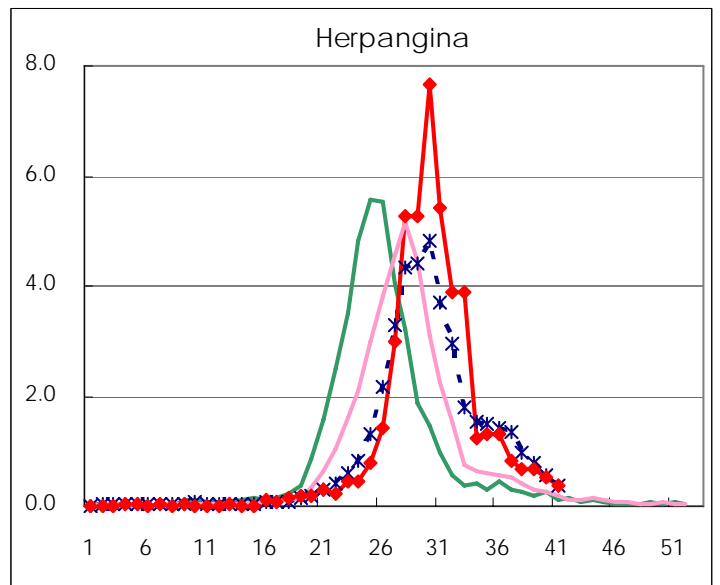
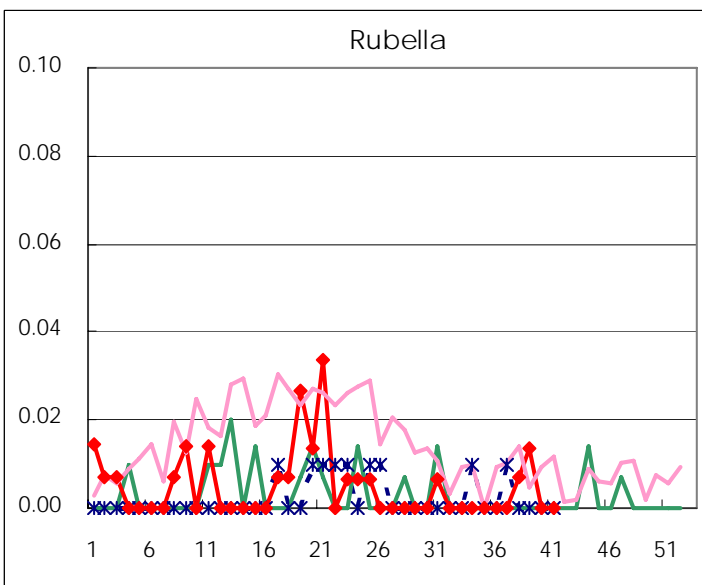
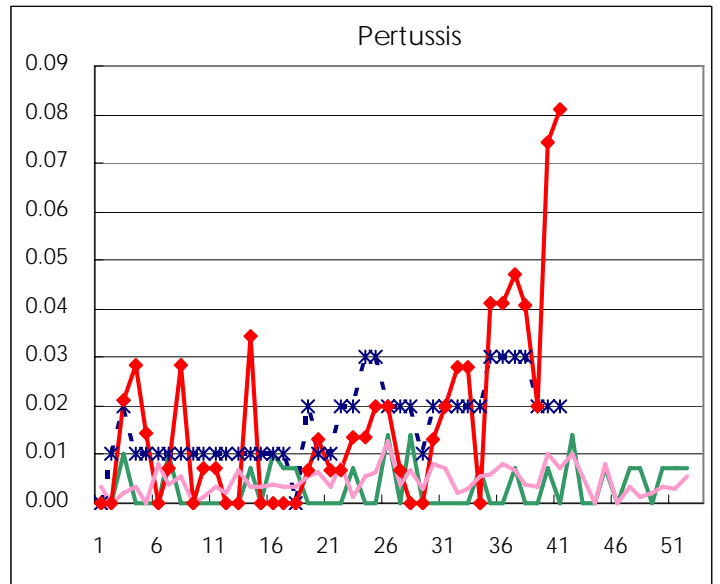
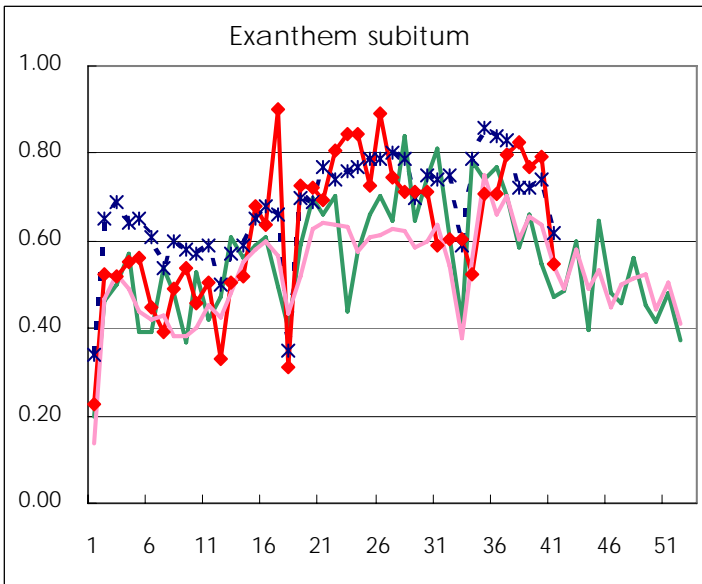
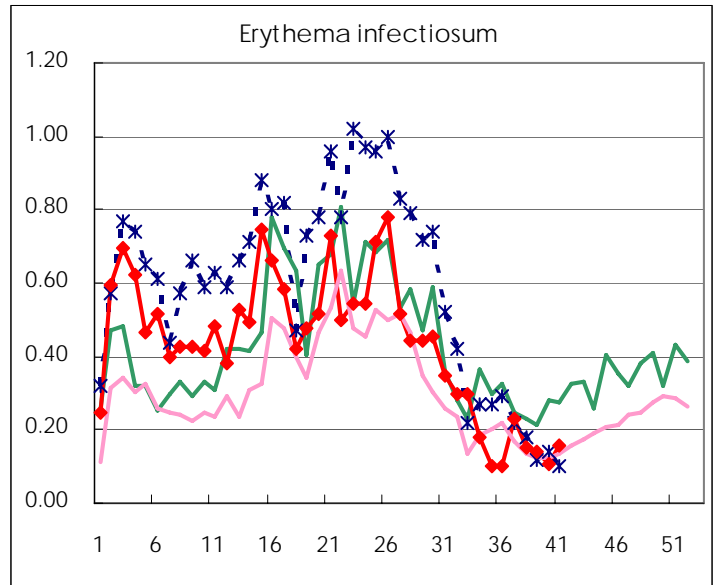
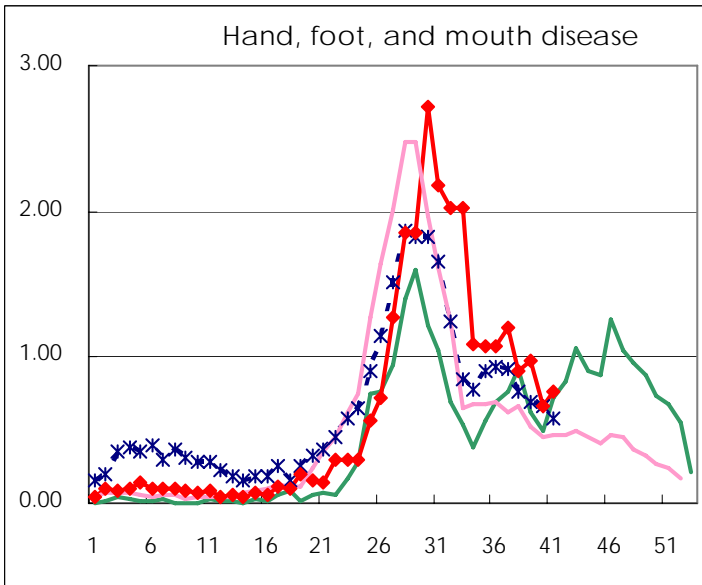
Number of patients with the diseases to be reported
by the designated clinics and hospitals

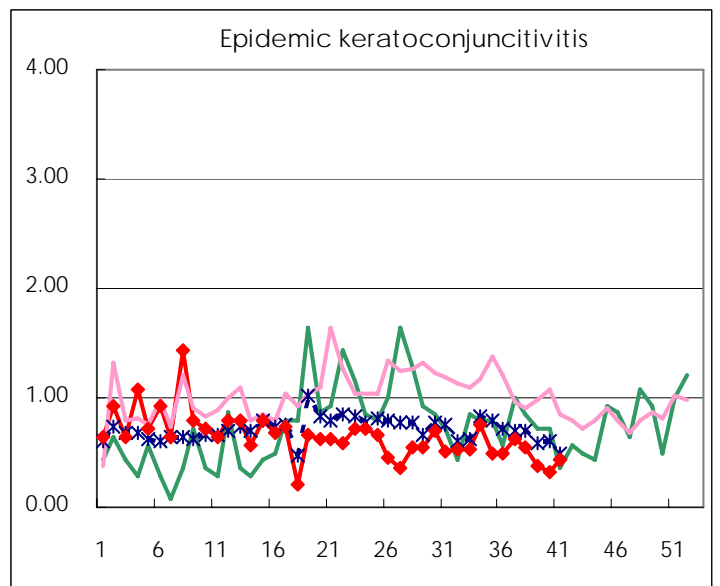
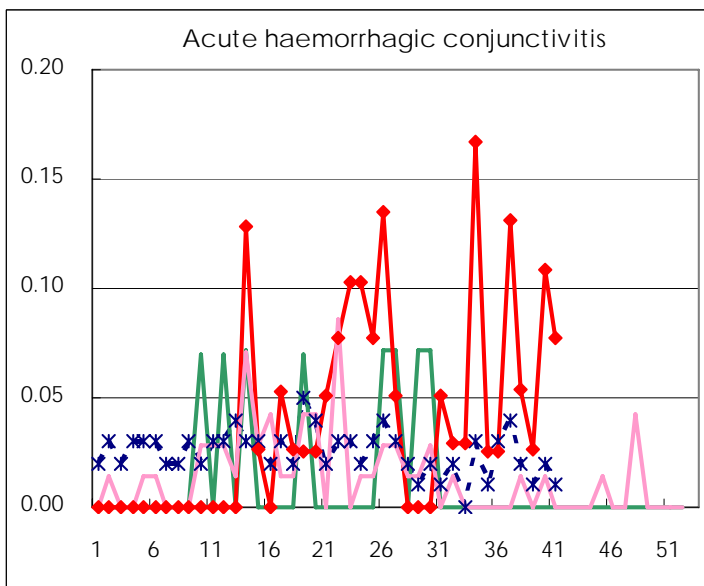
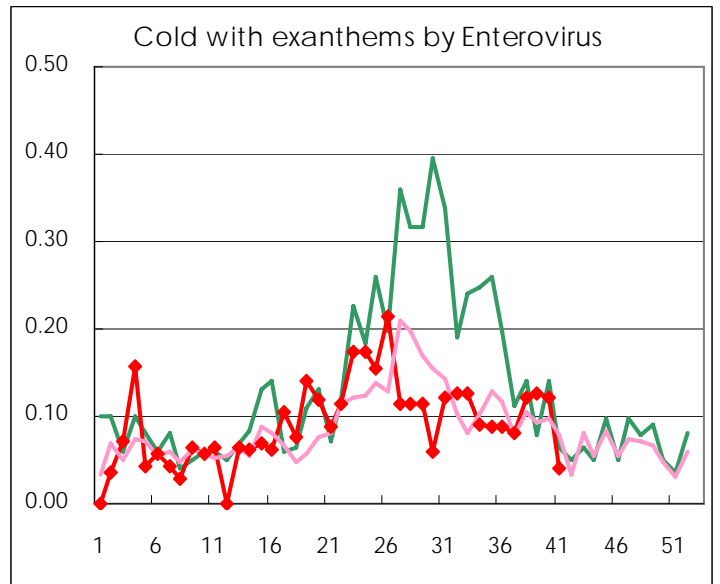
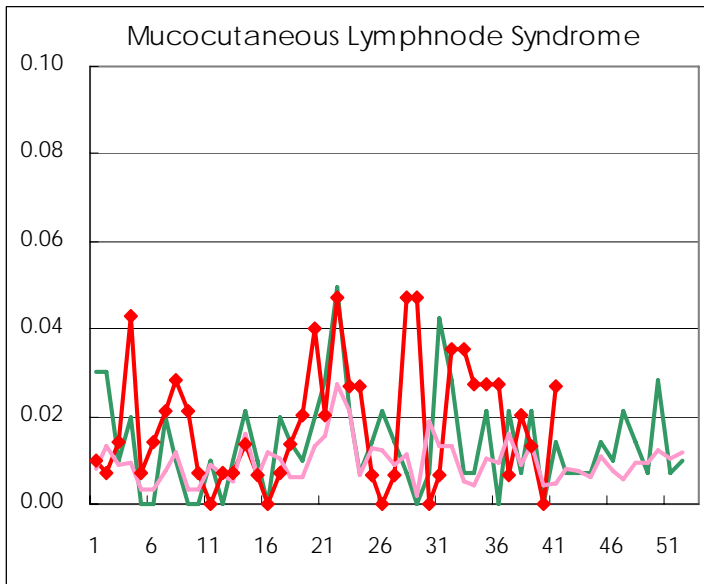
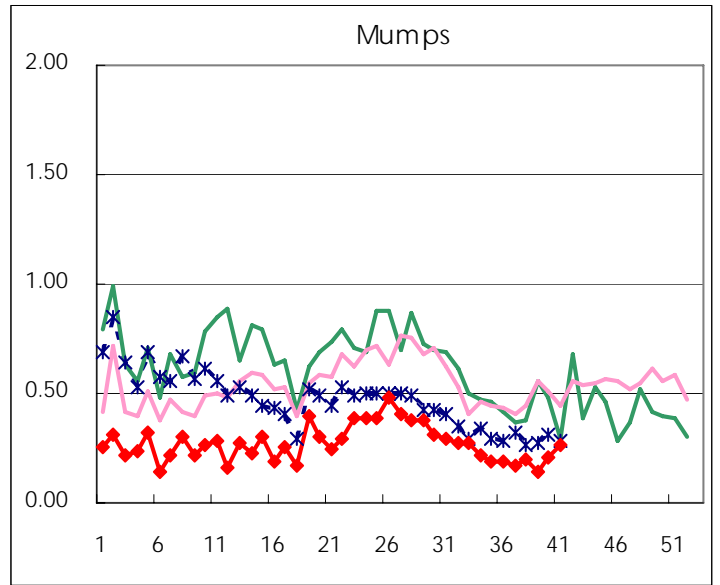
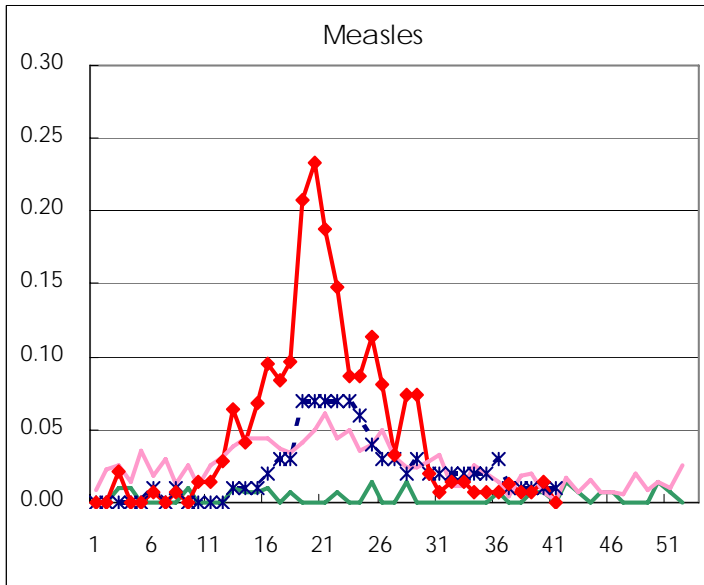
Diseases	2007				4wks total	Cum 2007
	38th	39th	40th	41th		
Respiratory syncytial virus infection	4	7	24	15	50	611
Influenza	14	16	32	24	86	43880
Pharyngoconjunctival fever	35	27	45	21	128	2436
Group A streptococcal pharyngitis	104	98	154	145	501	9203
Infectious gastroenteritis	494	511	563	495	2,063	28817
Chickenpox	56	48	45	51	200	7000
Hand, foot, and mouth disease	134	146	99	113	492	3772
Erythema infectiosum	22	21	16	23	82	2610
Exanthem subitum	121	115	117	81	434	3713
Pertussis	6	3	11	12	32	93
Rubella	1	2			3	31
Herpangina	97	100	75	56	328	6567
Measles	1	1	2		4	291
Mumps	29	21	31	39	120	1603
Cold with exanthems by Enterovirus	18	19	18	6	61	544
Mucocutaneous Lymphnode Syndrome	3	2		4	9	94
Acute hemorrhagic conjunctivitis	2	1	4	3	10	63
Epidemic keratoconjunctivitis	20	14	12	17	63	734
Bacterial meningitis				1	1	25
Aseptic meningitis			1	2	3	47
Mycoplasma pneumonia	5	6	3	7	21	151
Chlamydial pneumonia (excluding psittacosis)			2	1	3	14
Measles in adults	1				1	253

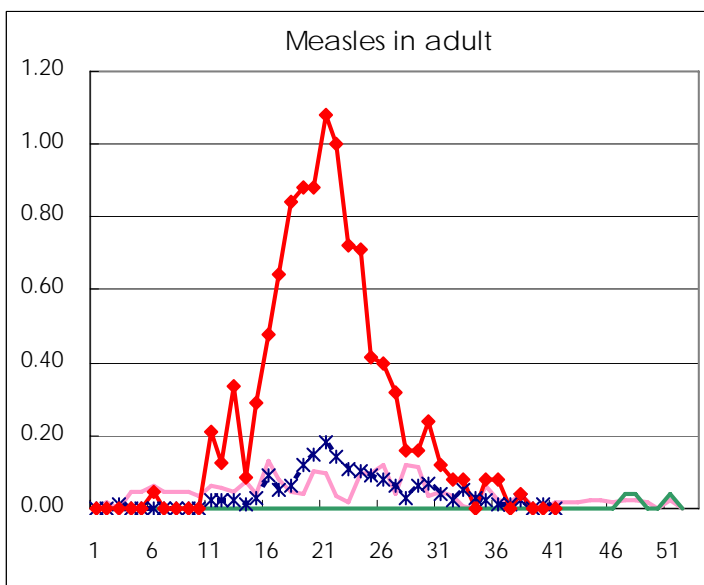
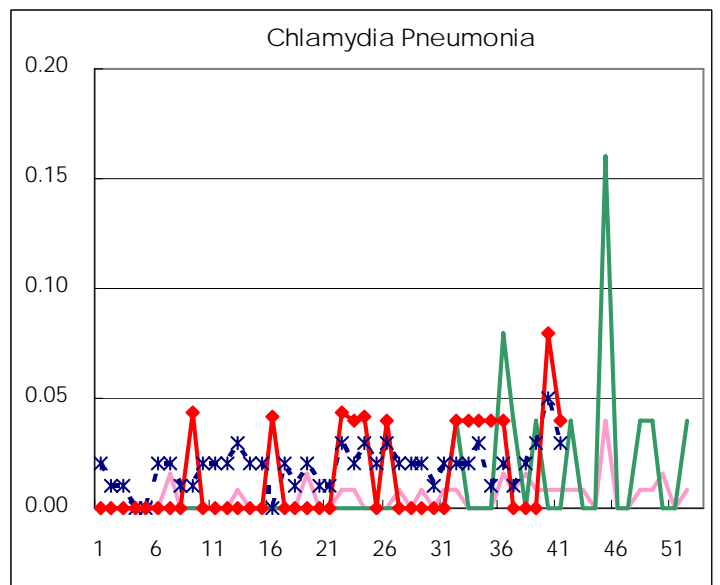
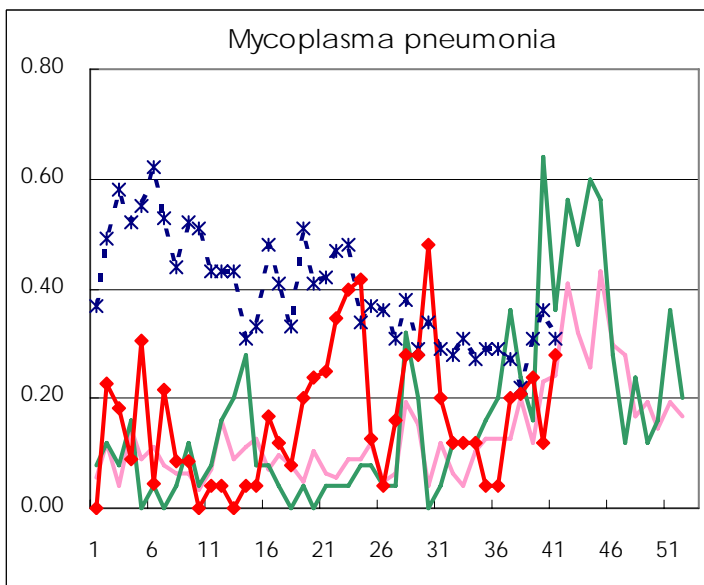
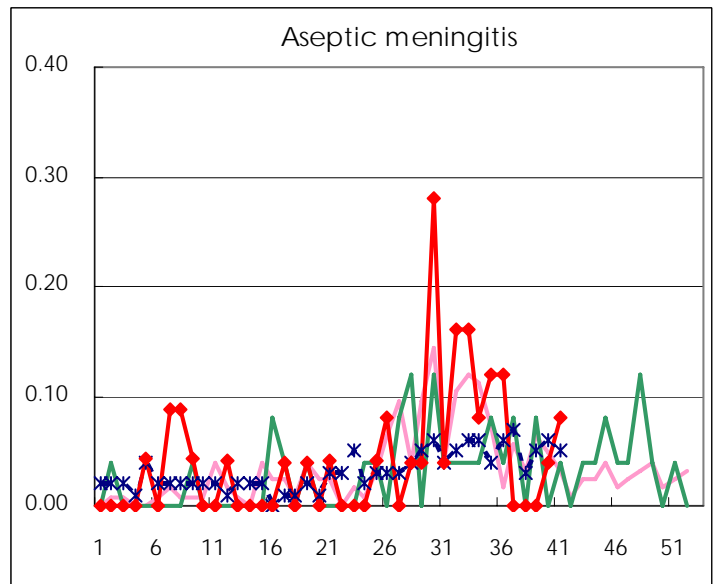
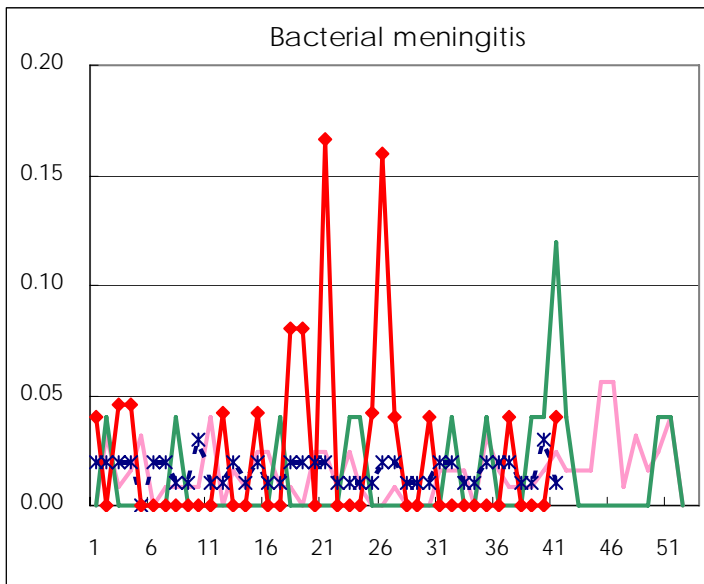
(Blank means 0.)

Disease Trend Graph (weekly reported cases per fixed-point in comparison)









Number of sentinel facilities for weekly reporting		
Types of sentinels	Number of sentinels	Sentinels having reported
Pediatric	150	148
Influenza	290	284
Ophthalmic	39	39
Specially-designated	25	25

Tokyo Metropolitan Government
Infectious Disease Surveillance Center