

---

INFECTIOUS DISEASES WEEKLY REPORT

# TOKYO IDWR

Tokyo Metropolitan Infectious Disease Surveillance Center

## 25 October 2007 / Number 42

### Surveillance System in Tokyo, Japan

The infectious diseases which all physicians must report

All physicians must report to health centers the incidence of the diseases which are shown at page one. Health centers electronically report the individual cases to Tokyo Metropolitan Infectious Disease Surveillance Center.

The infectious diseases required to be reported by the sentinels

The numbers of patients who visit the sentinel clinics or hospitals during a week are reported to health centers in Tokyo. And they electronically report the numbers to Tokyo Metropolitan Infectious Disease Surveillance Center. We have about 400 sentinel clinics and hospitals in Tokyo.

1st Week is early January and 52nd Week is end of December.

Tokyo Metropolitan Institute of Public Health  
Epidemiological Information Office

TEL:81-3-3363-3213 FAX:81-3-5332-7365  
e-mail:[idsc@tokyo-eiken.go.jp](mailto:idsc@tokyo-eiken.go.jp)  
URL:[idsc.tokyo-eiken.go.jp/](http://idsc.tokyo-eiken.go.jp/)

---

## Number of patients with the diseases which all physicians must report

Category	Diseases	Iokvo				Cum 2007	Ianan	
		39th	40th	41th	42th		42th	Cum 2007
I	Ebola hemorrhagic fever							
	Crimean-Congo hemorrhagic fever							
	Smallpox							
	South American hemorrhagic fever							
	Plague							
	Marburg disease							
	Lassa fever							
II	Acute poliomyelitis							
	Tuberculosis	59	80	67	49	2183	223	11608
	Diphtheria							
	Severe Acute Respiratory Syndrome(SARS)							
III	Cholera					2		11
	Shigellosis	1	3		1	71	5	397
	Enterohemorrhagic Escherichia coli infection	17	8	6	4	426	126	4017
	Typhoid fever		1		1	11	1	39
	Paratyphoid fever					4		15
IV	Hepatitis E					2	1	47
	West Nile fever							
	Hepatitis A		1			17	1	123
	Echinococcosis					3		13
	Yellow fever							
	Psittacosis					1		26
	Omsk hemorrhagic fever							
	Relapsing fever							
	Kyasanur forest disease							
	Q fever	1				1		4
	Rabies							
	Coccidioidomycosis					2		3
	Monkeypox							
	Hemorrhagic fever with renal syndrome							
	Western equine encephalitis							
	Tick-borne encephalitis							
	Anthrax							
	Scrub typhus(Tsutsugamushi disease)					2	1	100
	Dengue fever	1		2		20	1	78
	Eastern equine encephalitis							
	Avian influenza virus infection							
	Nipah virus infection							
	Japanese spotted fever						1	67
	Japanese encephalitis							3
	Epidemic typhus							
	Hantavirus pulmonary syndrome							
	Herpes B virus infection							
	Glanders							
	Brucellosis							1
	Venezuelan equine encephalitis							
	Hendra virus infection							
	Botulism							2
	Malaria	2		1		21	1	43
Tularemia								
Lyme disease					3		10	
Lyssavirus infection(excluding rabies)								
Rift valley fever								
Melioidosis								
Legionellosis	2	1	1		44	11	516	
Leptospirosis					3		21	
Rocky mountain spotted fever								

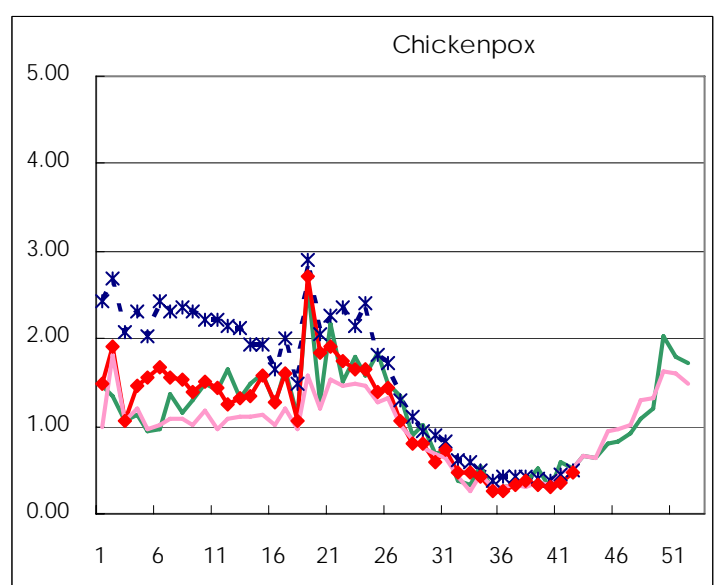
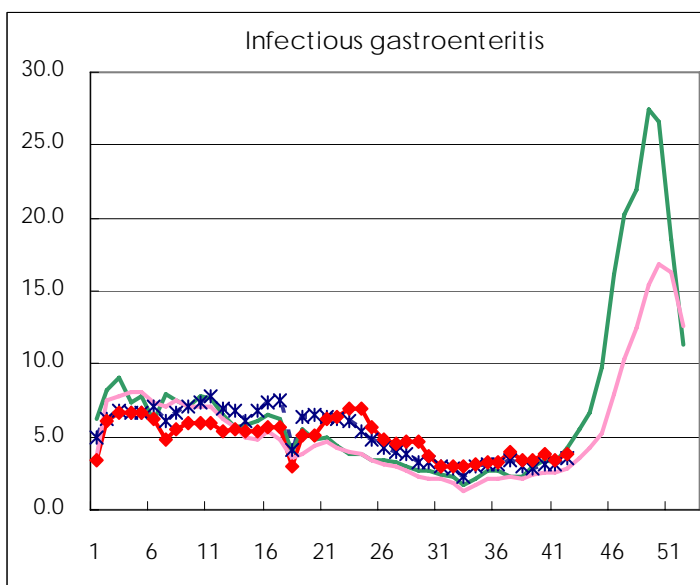
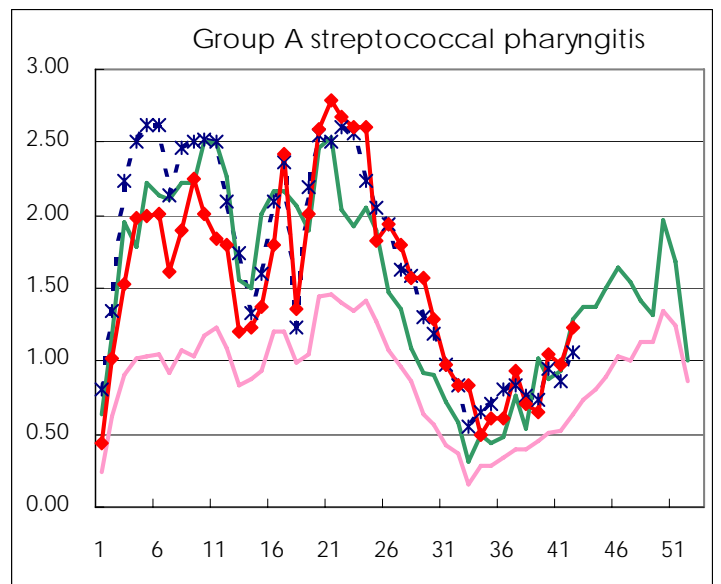
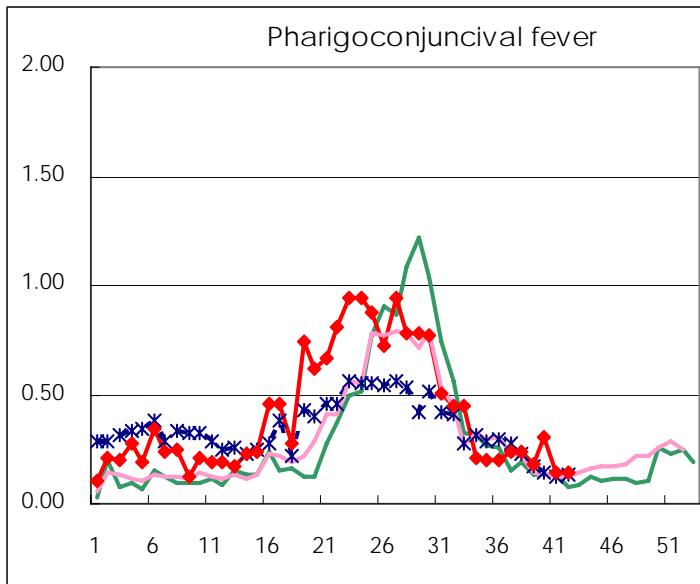
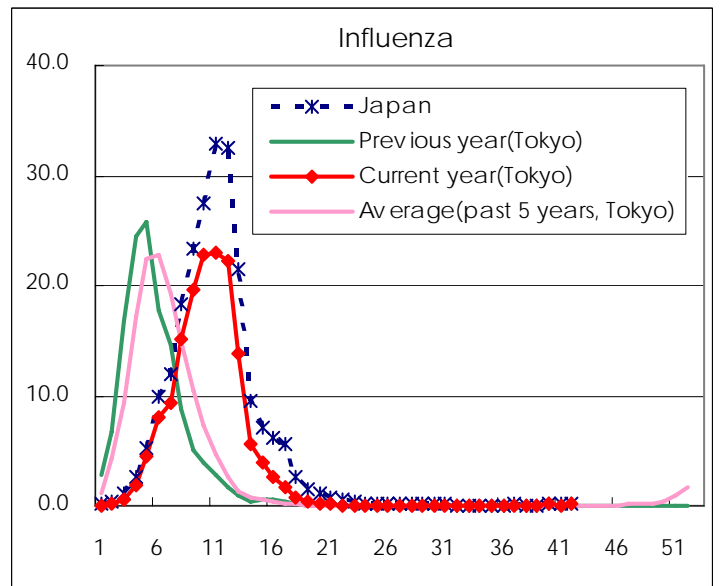
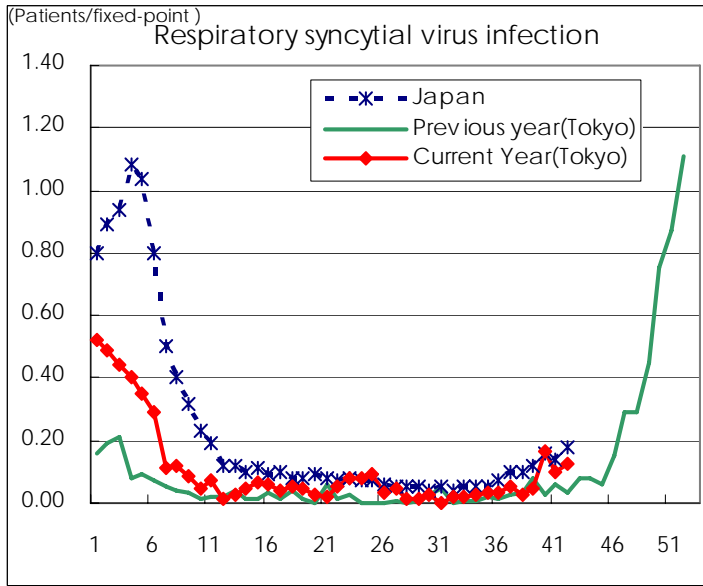
Category	Diseases	Tokyo				Cum 2007	Japan	
		39th	40th	41th	42th		42th	Cum 2007
V	Amebiasis	4	2	2	3	141	5	616
	Viral hepatitis(excluding hepatitis A and E)	1	2		1	33	2	186
	Acute encephalitis(excluding JE and WNE)					17	1	187
	Cryptosporidiosis					1		6
	Creutzfeldt-Jakob disease		1			11	1	115
	Severe invasive streptococcal infections(TSLS)		1			5		81
	Acquired immunodeficiency syndrome (AIDS)	15	14	13	10	408	12	1167
	Giardiasis	1			1	14		41
	Meningococcal meningitis					2		13
	Congenital rubella syndrome							
	Syphilis	3	6	3	3	123	5	562
	Tetanus					1	2	77
	Vancomycin-resistant S. aureus infection							
	Vancomycin-resistant Enterococcus infection	1			1	13	1	61
designated	Influenza (H5N1)							

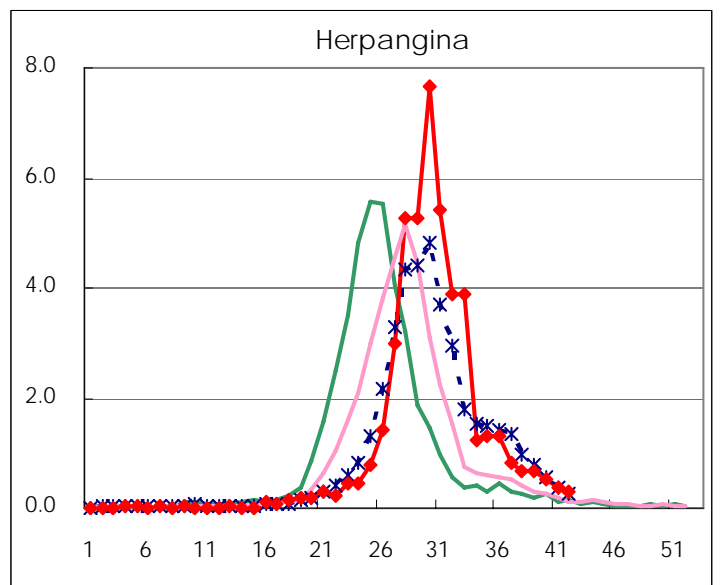
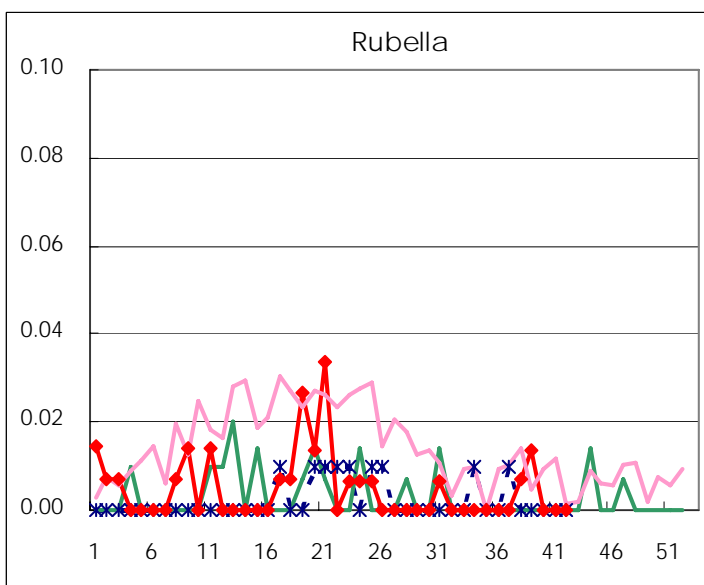
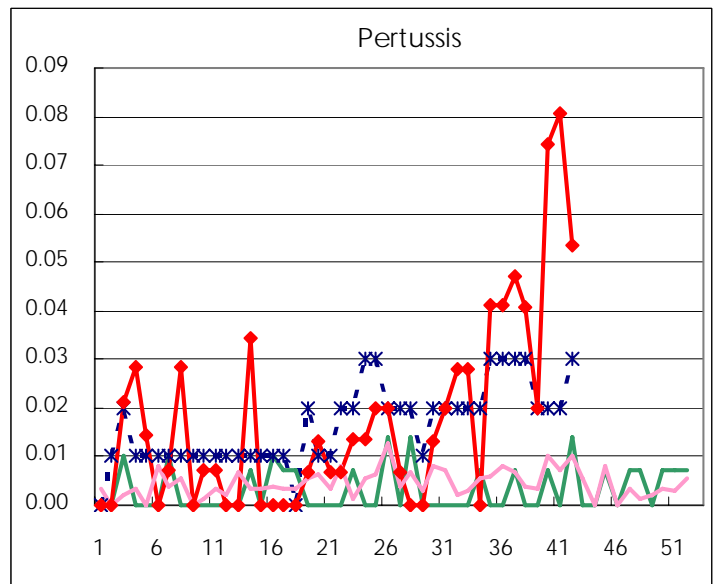
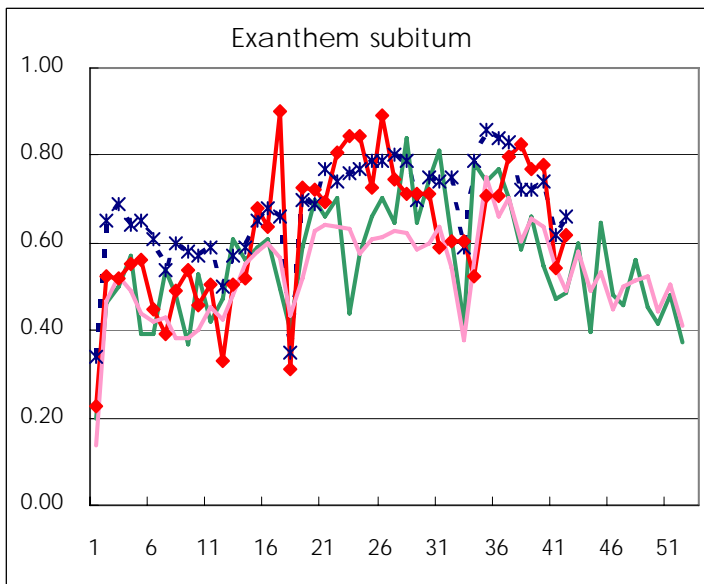
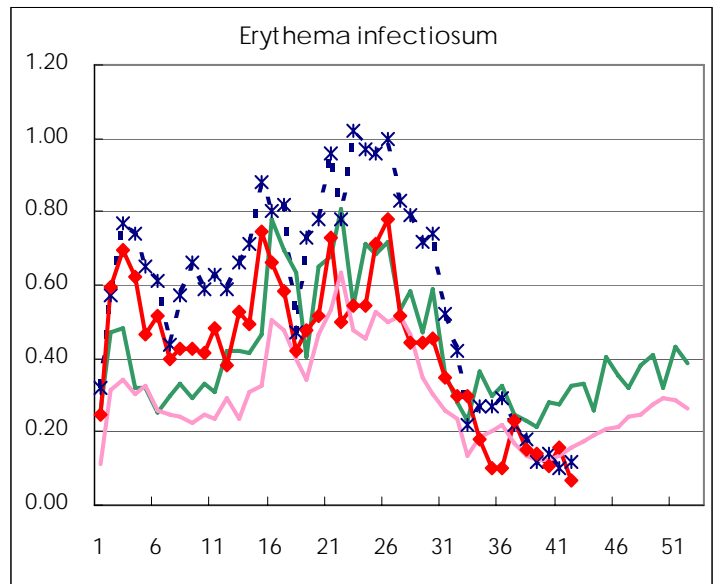
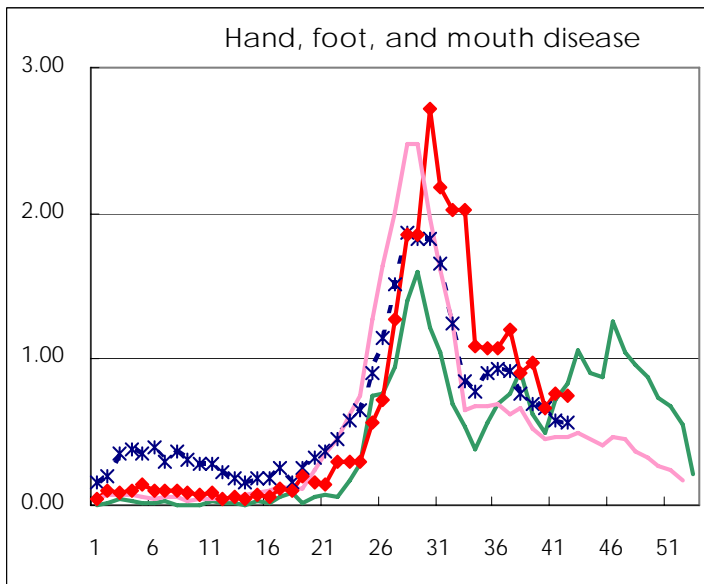
Number of patients with the diseases to be reported  
by the designated clinics and hospitals

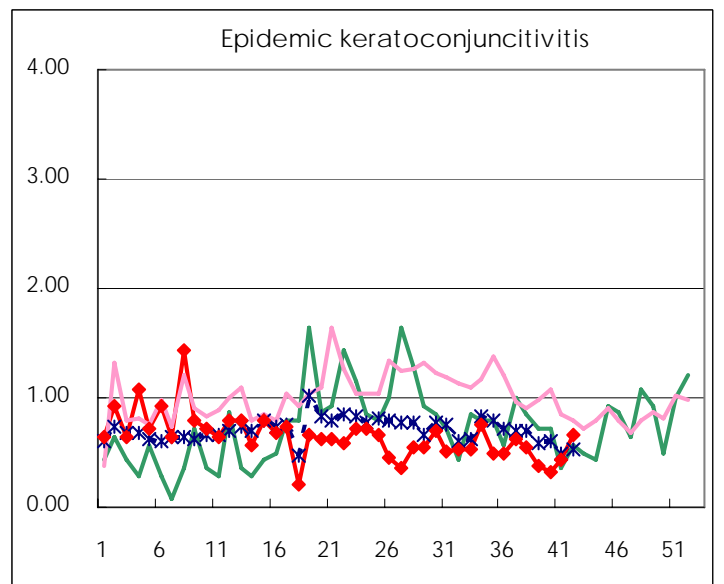
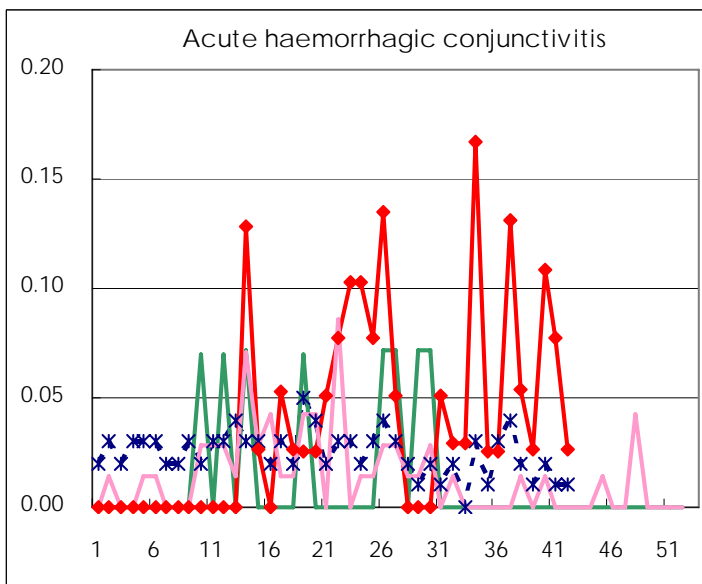
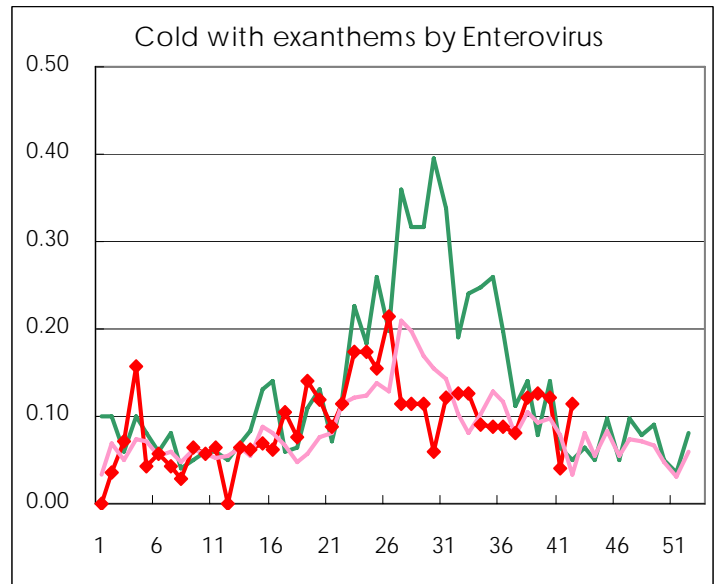
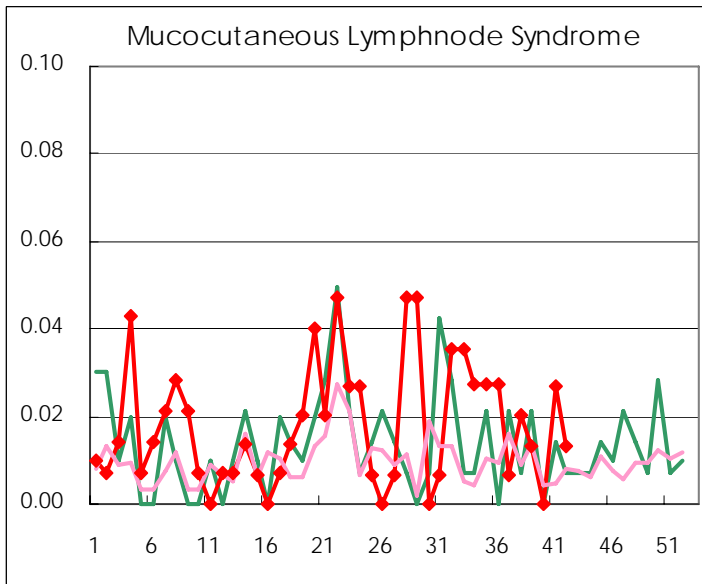
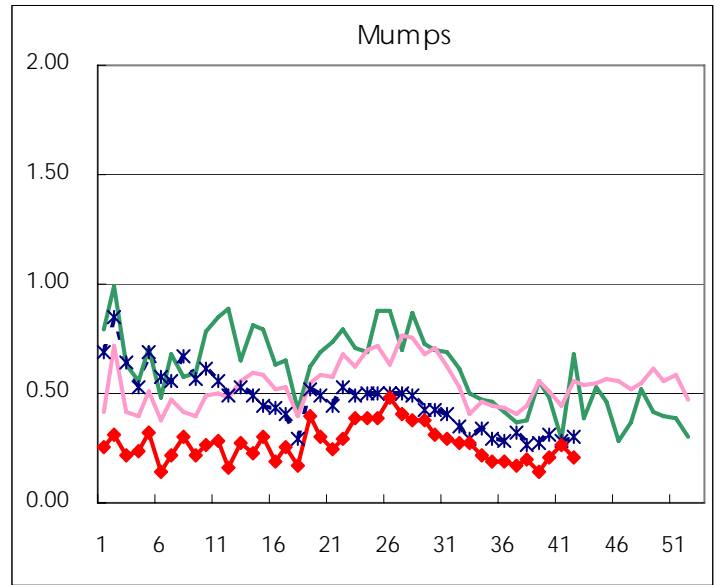
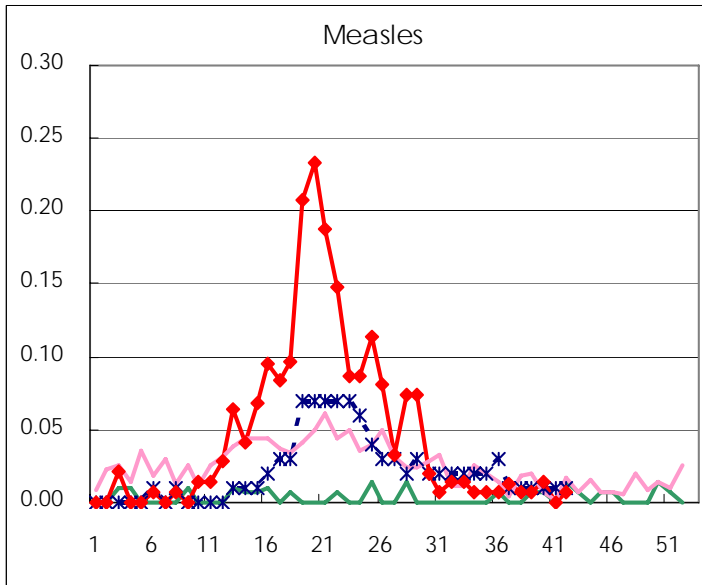
Diseases	2007				4wks total	Cum 2007
	39th	40th	41th	42th		
Respiratory syncytial virus infection	7	24	15	19	65	630
Influenza	16	32	24	45	117	43925
Pharyngoconjunctival fever	27	45	21	22	115	2458
Group A streptococcal pharyngitis	98	154	145	184	581	9387
Infectious gastroenteritis	511	563	499	567	2,140	29388
Chickenpox	48	45	51	72	216	7072
Hand, foot, and mouth disease	146	99	113	113	471	3885
Erythema infectiosum	21	16	23	10	70	2620
Exanthem subitum	115	115	81	93	404	3804
Pertussis	3	11	12	8	34	101
Rubella	2				2	31
Herpangina	100	75	56	44	275	6611
Measles	1	2		1	4	292
Mumps	21	31	39	31	122	1634
Cold with exanthems by Enterovirus	19	18	6	17	60	561
Mucocutaneous Lymphnode Syndrome	2		4	2	8	96
Acute hemorrhagic conjunctivitis	1	4	3	1	9	64
Epidemic keratoconjunctivitis	14	12	17	25	68	759
Bacterial meningitis			1	1	2	26
Aseptic meningitis		1	2		3	47
Mycoplasma pneumonia	6	3	7	5	21	156
Chlamydial pneumonia (excluding psittacosis)		2	1	1	4	15
Measles in adults				1	1	254

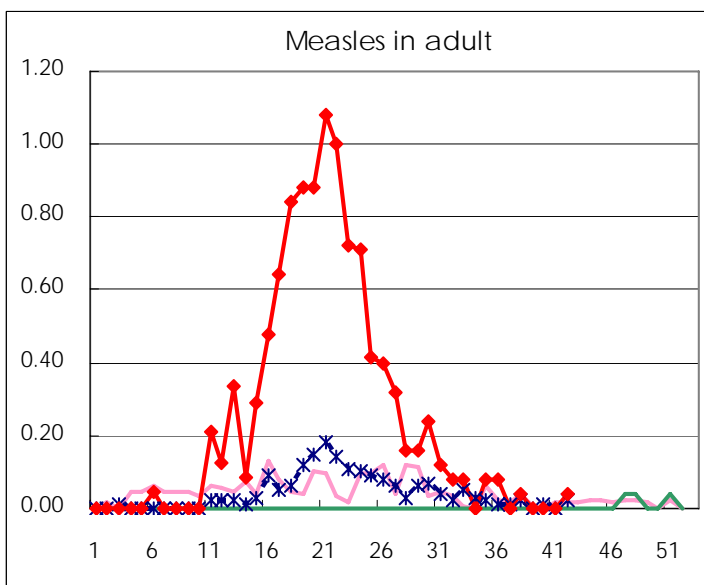
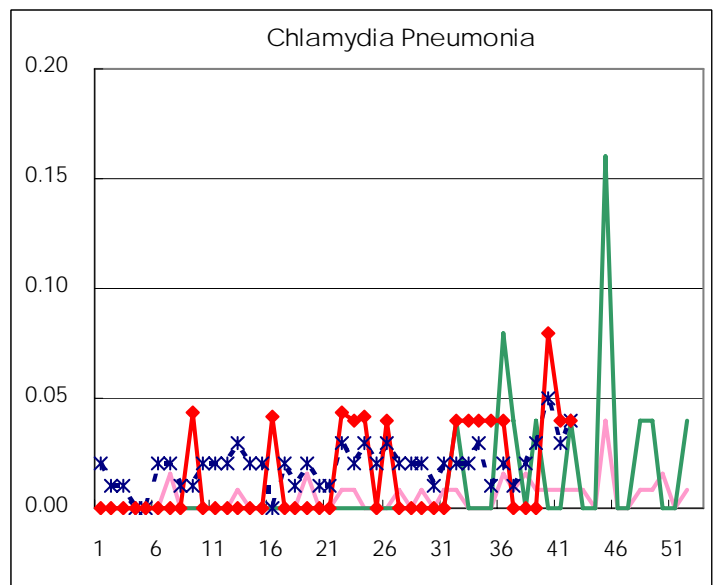
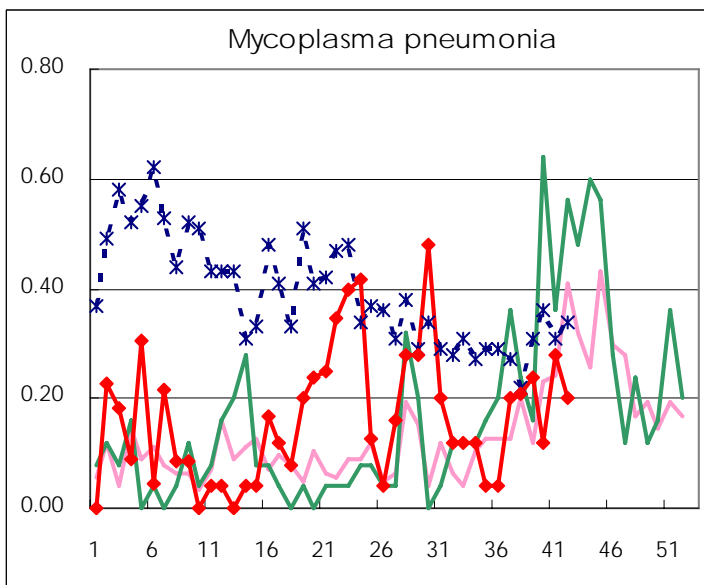
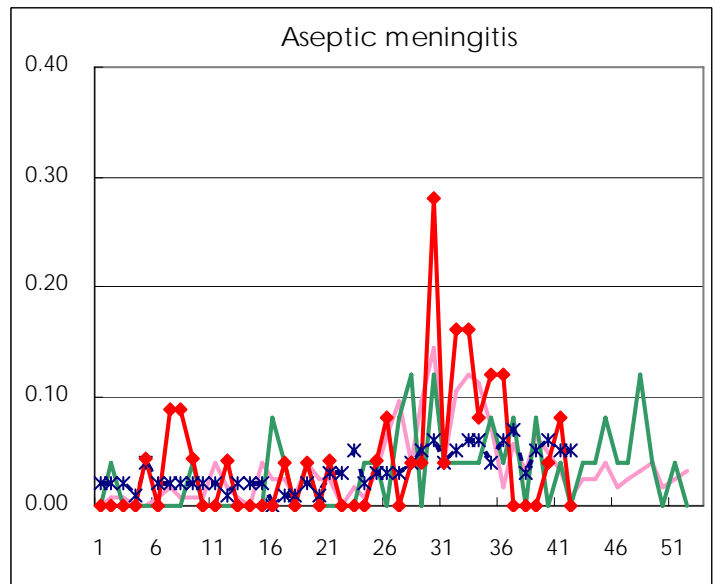
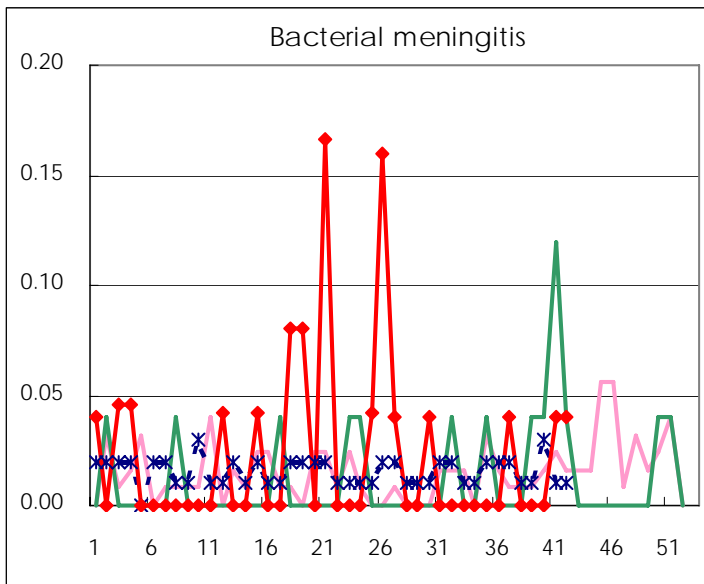
( Blank means 0. )

# Disease Trend Graph (weekly reported cases per fixed-point in comparison)









Number of sentinel facilities for weekly reporting		
Types of sentinels	Number of sentinels	Sentinels having reported
Pediatric	150	150
Influenza	290	287
Ophthalmic	39	38
Specially-designated	25	25

Tokyo Metropolitan Government  
Infectious Disease Surveillance Center