

---

INFECTIOUS DISEASES WEEKLY REPORT

# TOKYO IDWR

Tokyo Metropolitan Infectious Disease Surveillance Center

## 8 November 2007 / Number 44

### Surveillance System in Tokyo, Japan

The infectious diseases which all physicians must report

All physicians must report to health centers the incidence of the diseases which are shown at page one. Health centers electronically report the individual cases to Tokyo Metropolitan Infectious Disease Surveillance Center.

The infectious diseases required to be reported by the sentinels

The numbers of patients who visit the sentinel clinics or hospitals during a week are reported to health centers in Tokyo. And they electronically report the numbers to Tokyo Metropolitan Infectious Disease Surveillance Center. We have about 400 sentinel clinics and hospitals in Tokyo.

1st Week is early January and 52nd Week is end of December.

Tokyo Metropolitan Institute of Public Health  
Epidemiological Information Office

TEL:81-3-3363-3213 FAX:81-3-5332-7365

e-mail:[idsc@tokyo-eiken.go.jp](mailto:idsc@tokyo-eiken.go.jp)

URL:[idsc.tokyo-eiken.go.jp/](http://idsc.tokyo-eiken.go.jp/)

---

## Number of patients with the diseases which all physicians must report

Category	Diseases	Tokyo					Japan	
		41th	42th	43th	44th	Cum 2007	44th	Cum 2007
I	Ebola hemorrhagic fever							
	Crimean-Congo hemorrhagic fever							
	Smallpox							
	South American hemorrhagic fever							
	Plague							
	Marburg disease							
	Lassa fever							
II	Acute poliomyelitis							
	Tuberculosis	74	79	76	64	2348	292	15036
	Diphtheria							
	Severe Acute Respiratory Syndrome(SARS)							
III	Cholera					2		12
	Shigellosis		1	2	1	74	3	408
	Enterohemorrhagic Escherichia coli infection	6	4	10	4	440	70	4222
	Typhoid fever		1			11		42
	Paratyphoid fever			1	1	6	1	17
IV	Hepatitis E					2	1	49
	West Nile fever							
	Hepatitis A					17	1	130
	Echinococcosis					3		13
	Yellow fever							
	Psittacosis					1	1	28
	Omsk hemorrhagic fever							
	Relapsing fever							
	Kyasanur forest disease							
	Q fever					1		4
	Rabies							
	Coccidioidomycosis					2		3
	Monkeypox							
	Hemorrhagic fever with renal syndrome							
	Western equine encephalitis							
	Tick-borne encephalitis							
	Anthrax							
	Scrub typhus(Tsutsugamushi disease)					2	4	109
	Dengue fever	2		1	1	22	1	81
	Eastern equine encephalitis							
	Avian influenza virus infection							
	Nipah virus infection							
	Japanese spotted fever						4	75
	Japanese encephalitis						2	7
	Epidemic typhus							
	Hantavirus pulmonary syndrome							
	Herpes B virus infection							
	Glanders							
	Brucellosis							1
	Venezuelan equine encephalitis							
	Hendra virus infection							
	Botulism							2
Malaria	1			1	22	3	46	
Tularemia								
Lyme disease					3		10	
Lyssavirus infection(excluding rabies)								
Rift valley fever								
Melioidosis								
Legionellosis	1		1	1	46	15	548	
Leptospirosis					3	1	25	
Rocky mountain spotted fever								

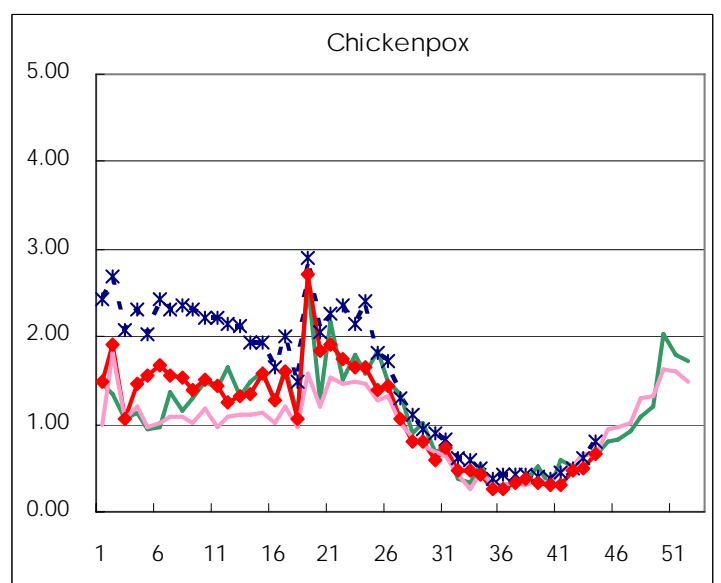
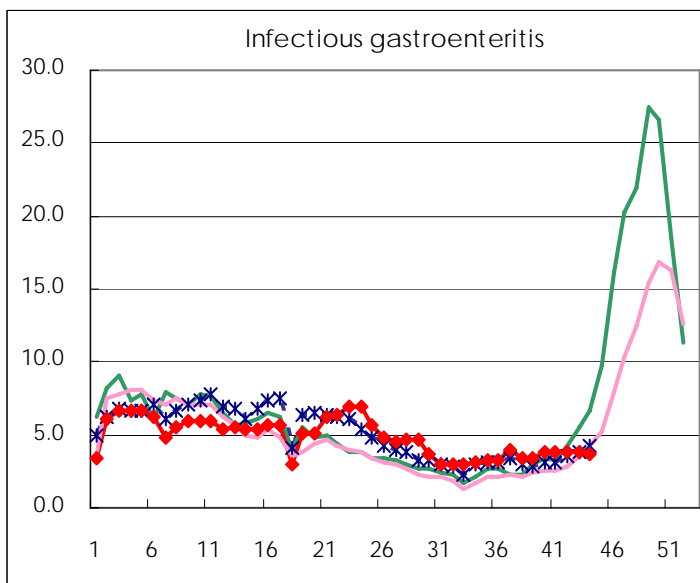
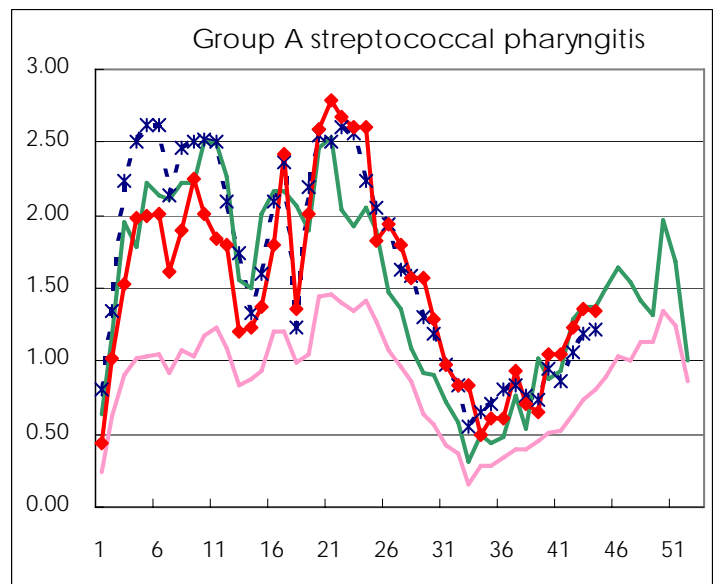
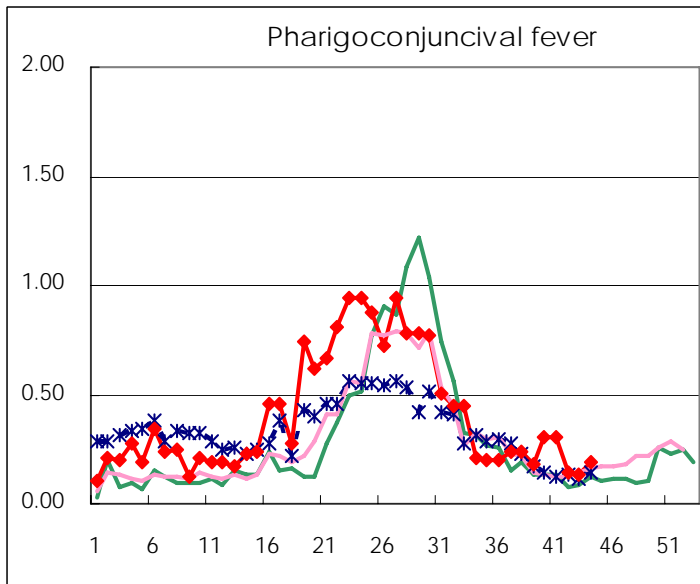
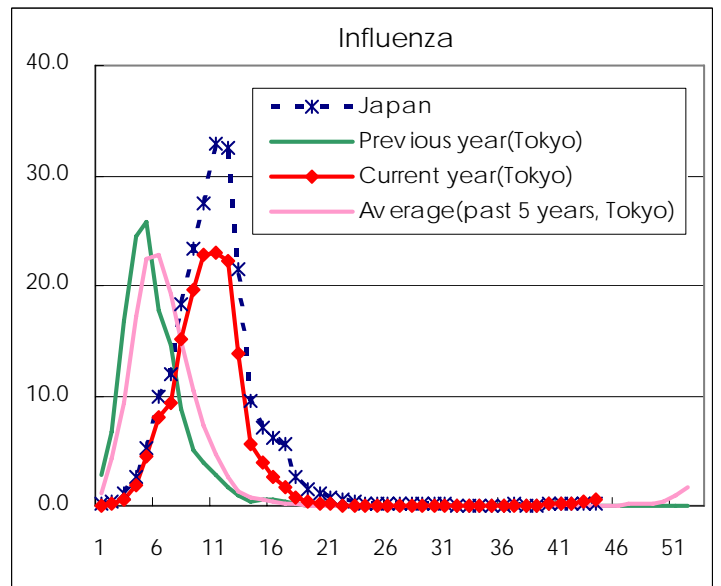
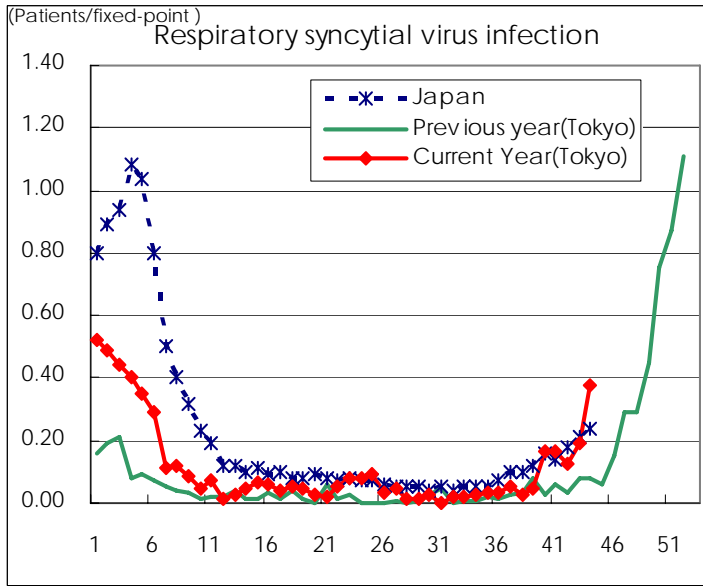
Category	Diseases	Tokyo					Japan	
		41th	42th	43th	44th	Cum 2007	44th	Cum 2007
V	Amebiasis	2	3	1	5	147	11	654
	Viral hepatitis(excluding hepatitis A and E)		1	1		34	4	198
	Acute encephalitis(excluding JE and WNE)					17	1	194
	Cryptosporidiosis					1		6
	Creutzfeldt-Jakob disease				1	12	1	119
	Severe invasive streptococcal infections(TSLS)			1		6		84
	Acquired immunodeficiency syndrome (AIDS)	13	10	15	8	430	17	1228
	Giardiasis		1	1		15		44
	Meningococcal meningitis					2		13
	Congenital rubella syndrome							
	Syphilis	3	3	6	8	137	8	592
	Tetanus					1	1	80
	Vancomycin-resistant S. aureus infection							
	Vancomycin-resistant Enterococcus infection			1	1	14	2	65
designated	Influenza (H5N1)							

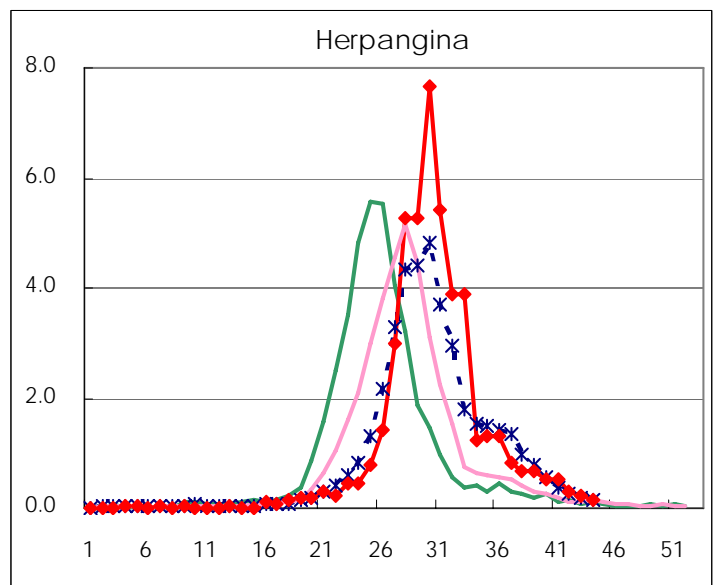
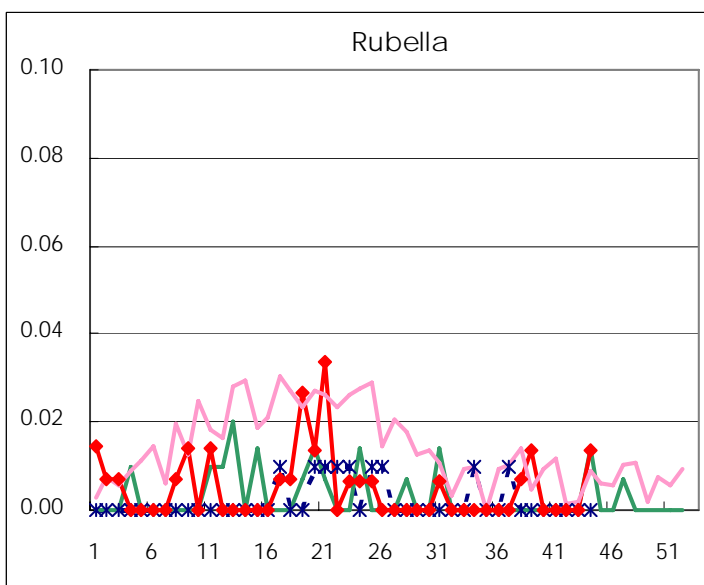
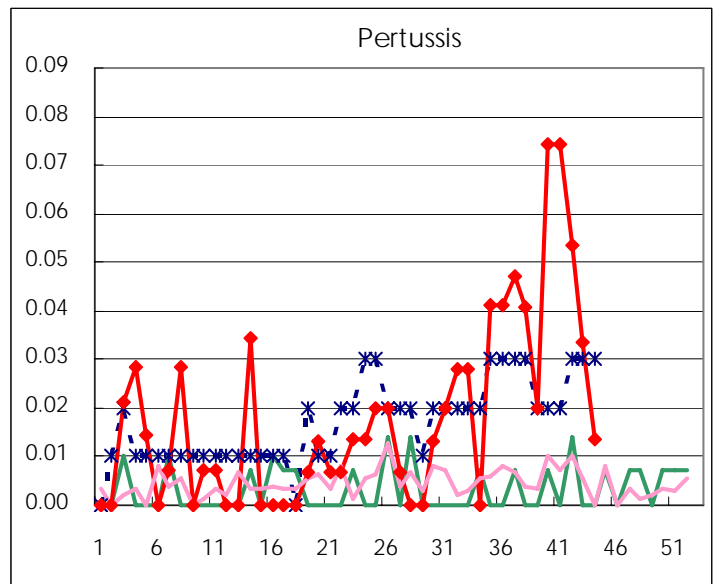
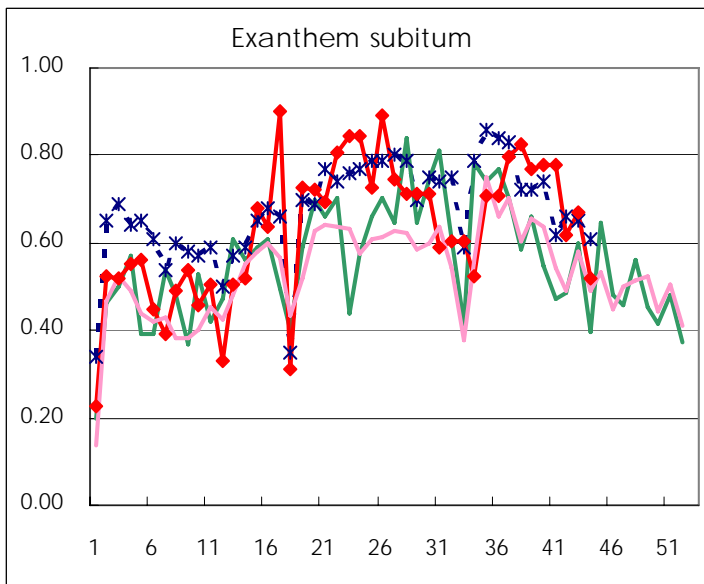
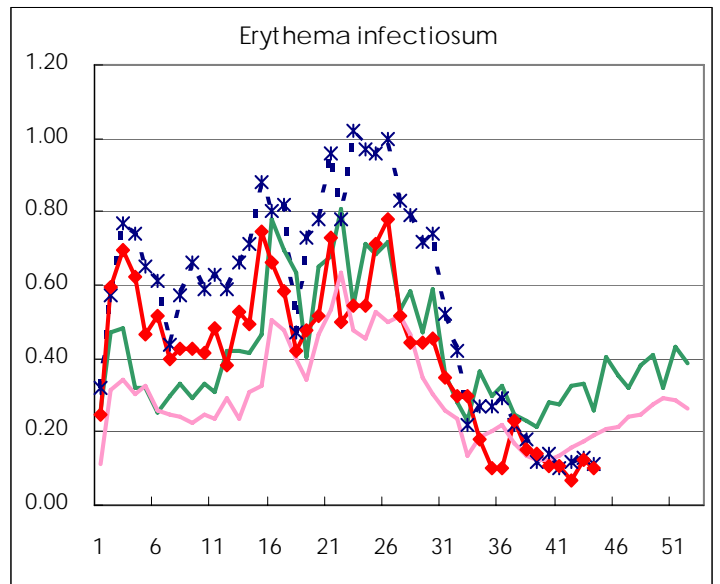
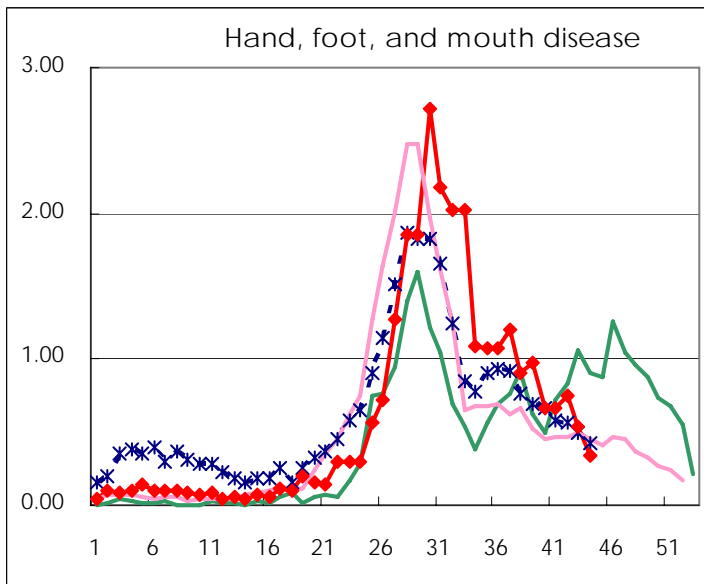
Number of patients with the diseases to be reported  
by the designated clinics and hospitals

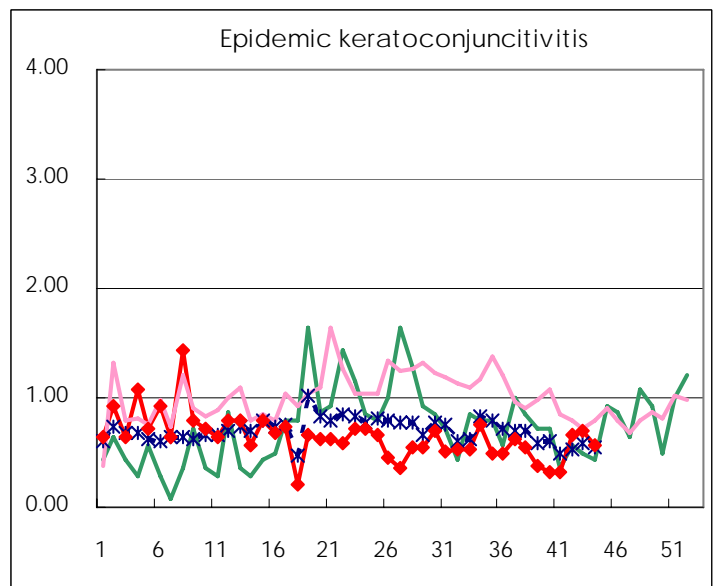
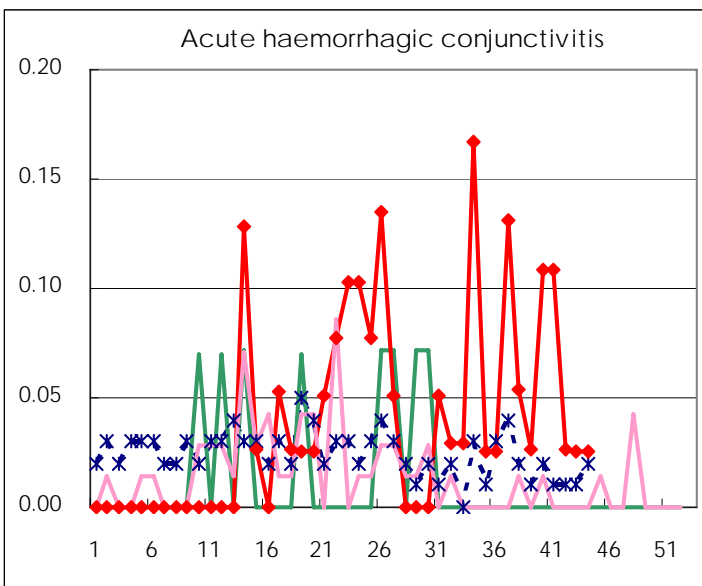
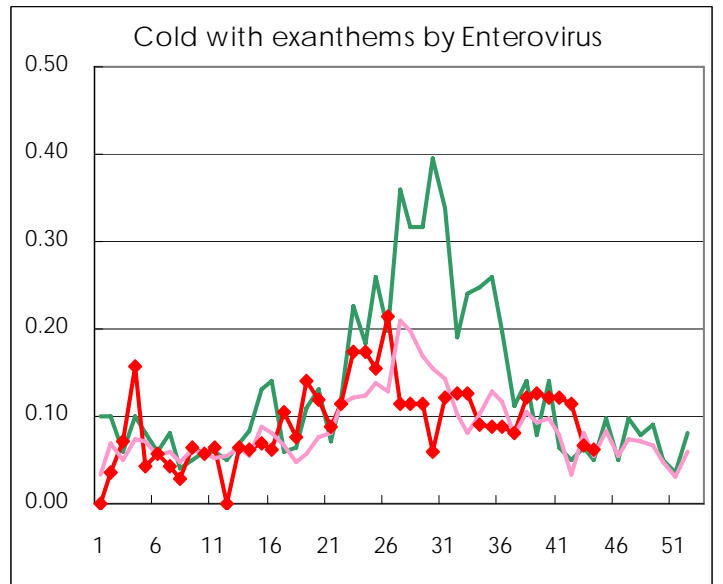
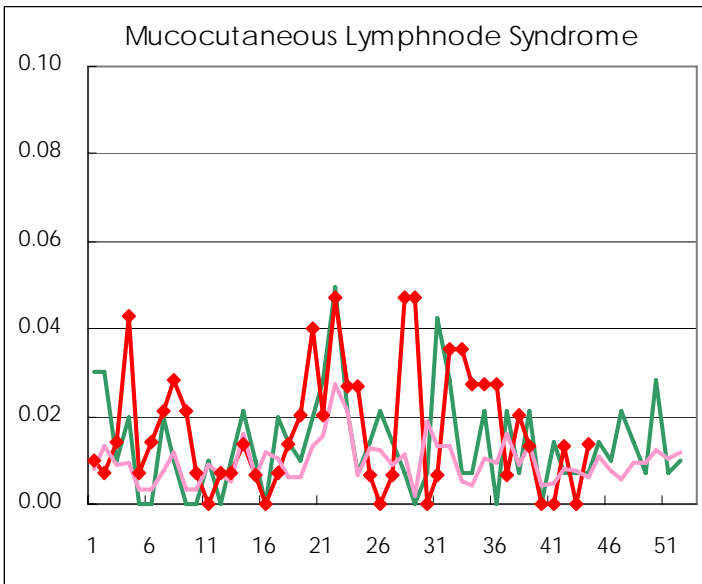
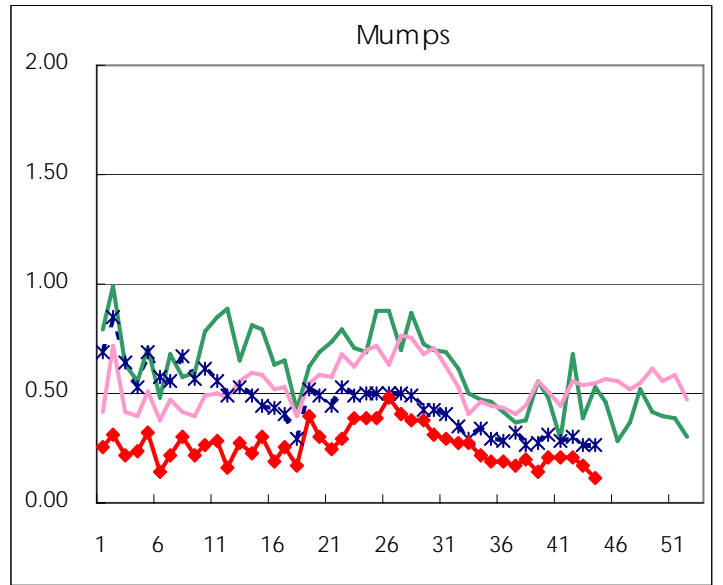
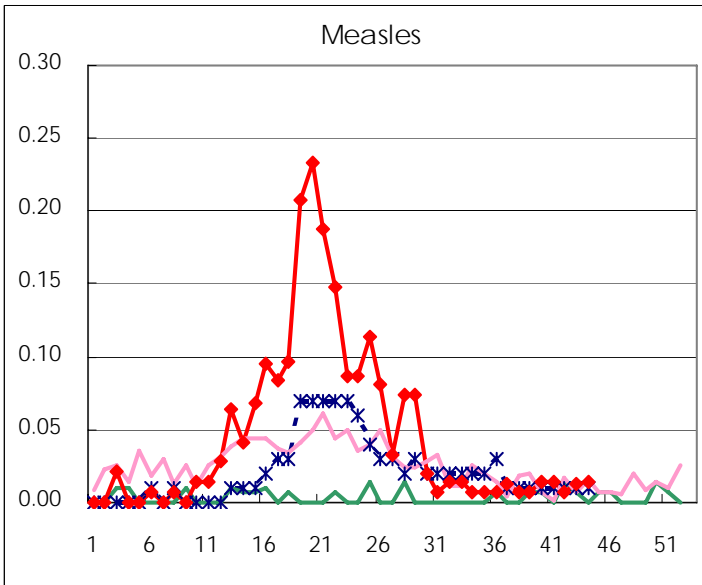
Diseases	2007				4wks total	Cum 2007
	41th	42th	43th	44th		
Respiratory syncytial virus infection	15	19	29	56	119	715
Influenza	24	45	112	174	355	44211
Pharyngoconjunctival fever	21	22	20	28	91	2506
Group A streptococcal pharyngitis	145	184	203	198	730	9788
Infectious gastroenteritis	499	567	572	554	2,192	30514
Chickenpox	51	72	74	96	293	7242
Hand, foot, and mouth disease	113	113	80	50	356	4015
Erythema infectiosum	23	10	18	15	66	2653
Exanthem subitum	81	93	100	77	351	3981
Pertussis	12	8	5	2	27	108
Rubella				2	2	33
Herpangina	56	44	34	23	157	6668
Measles		1	2	2	5	296
Mumps	39	31	25	17	112	1676
Cold with exanthems by Enterovirus	6	17	10	9	42	580
Mucocutaneous Lymphnode Syndrome	4	2		2	8	98
Acute hemorrhagic conjunctivitis	3	1	1	1	6	66
Epidemic keratoconjunctivitis	17	25	27	22	91	808
Bacterial meningitis	1	1	1		3	27
Aseptic meningitis	2			1	3	48
Mycoplasma pneumonia	7	5	2	6	20	164
Chlamydial pneumonia (excluding psittacosis)	1	1	1	1	4	17
Measles in adults		1	2		3	256

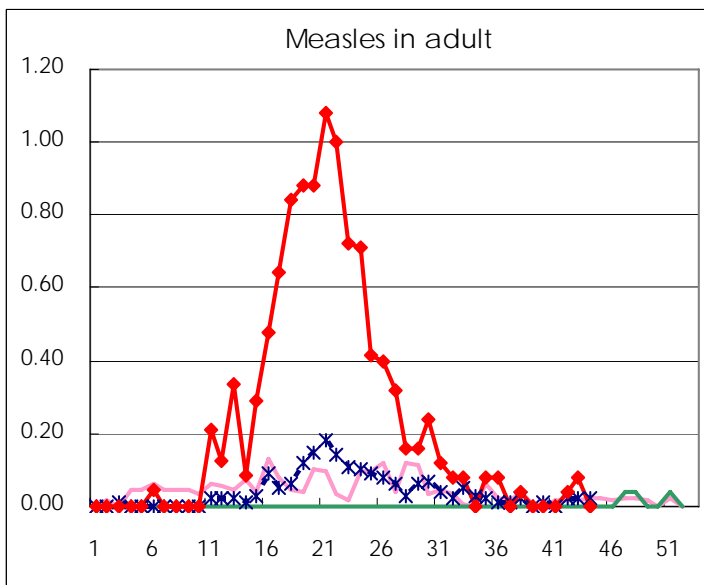
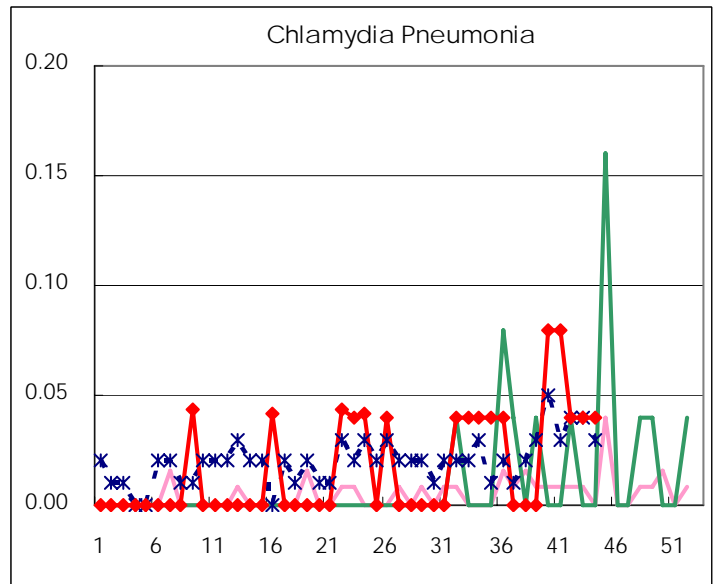
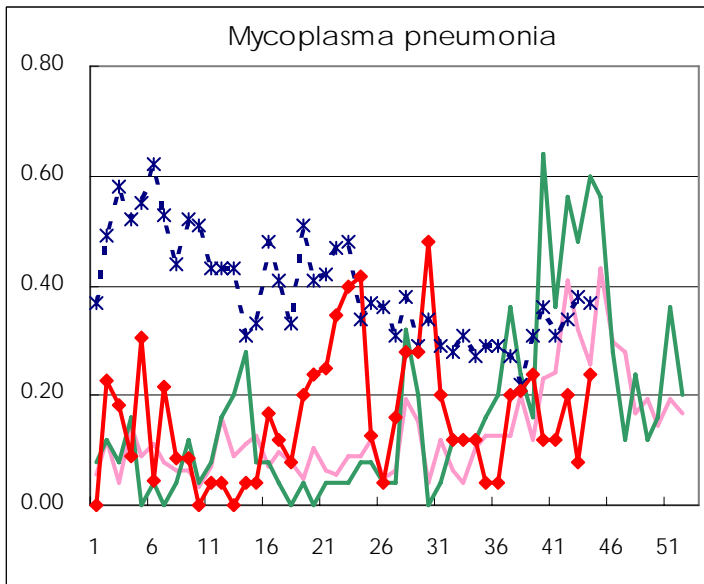
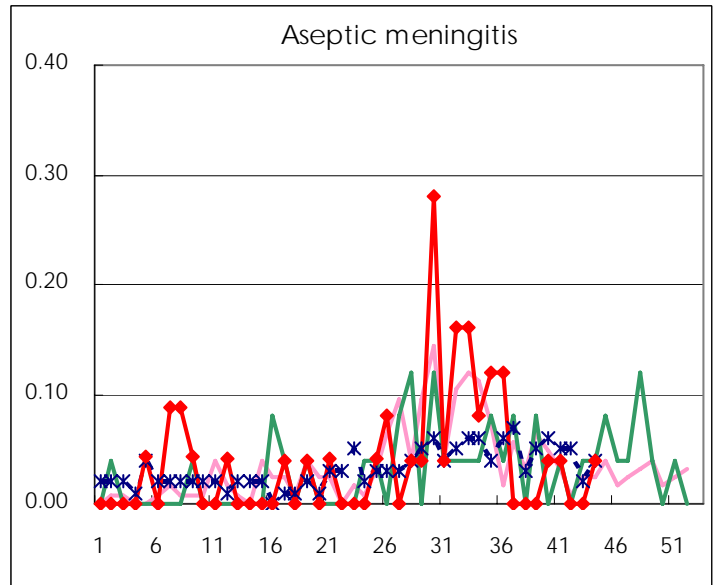
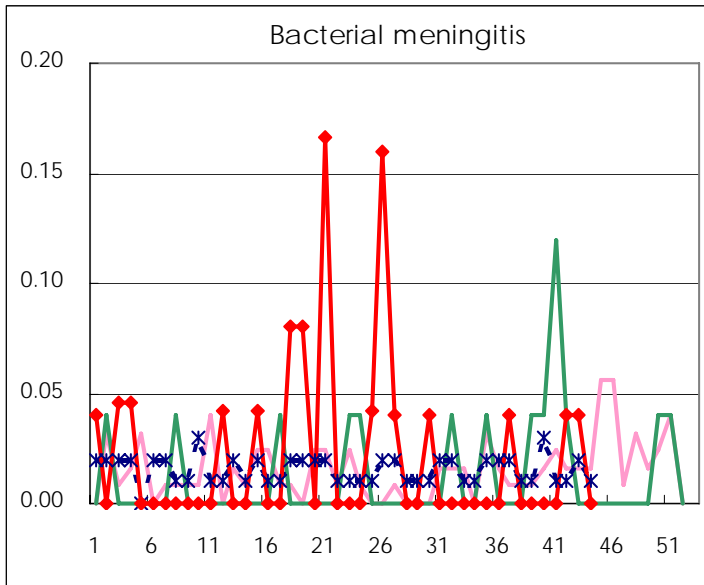
( Blank means 0. )

# Disease Trend Graph (weekly reported cases per fixed-point in comparison)









Number of sentinel facilities for weekly reporting		
Types of sentinels	Number of sentinels	Sentinels having reported
Pediatric	150	148
Influenza	290	285
Ophthalmic	39	39
Specially-designated	25	25

Tokyo Metropolitan Government  
Infectious Disease Surveillance Center