
INFECTIOUS DISEASES WEEKLY REPORT

TOKYO IDWR

Tokyo Metropolitan Infectious Disease Surveillance Center

15 November 2007 / Number 45

Surveillance System in Tokyo, Japan

The infectious diseases which all physicians must report

All physicians must report to health centers the incidence of the diseases which are shown at page one. Health centers electronically report the individual cases to Tokyo Metropolitan Infectious Disease Surveillance Center.

The infectious diseases required to be reported by the sentinels

The numbers of patients who visit the sentinel clinics or hospitals during a week are reported to health centers in Tokyo. And they electronically report the numbers to Tokyo Metropolitan Infectious Disease Surveillance Center. We have about 400 sentinel clinics and hospitals in Tokyo.

1st Week is early January and 52nd Week is end of December.

Tokyo Metropolitan Institute of Public Health
Epidemiological Information Office

TEL:81-3-3363-3213 FAX:81-3-5332-7365

e-mail:idsc@tokyo-eiken.go.jp

URL:idsc.tokyo-eiken.go.jp/

Number of patients with the diseases which all physicians must report

Category	Diseases	Tokyo					Japan	
		42th	43th	44th	45th	Cum 2007	45th	Cum 2007
I	Ebola hemorrhagic fever							
	Crimean-Congo hemorrhagic fever							
	Smallpox							
	South American hemorrhagic fever							
	Plague							
	Marburg disease							
	Lassa fever							
II	Acute poliomyelitis							
	Tuberculosis	83	79	71	72	2424	297	15578
	Diphtheria							
	Severe Acute Respiratory Syndrome(SARS)							
III	Cholera					2		12
	Shigellosis	1	2	1	1	75	4	413
	Enterohemorrhagic Escherichia coli infection	4	10	4	4	444	54	4283
	Typhoid fever	1				11	1	43
	Paratyphoid fever		1	1		6		17
IV	Hepatitis E				1	3	1	50
	West Nile fever							
	Hepatitis A					17		132
	Echinococcosis					3		13
	Yellow fever							
	Psittacosis					1		28
	Omsk hemorrhagic fever							
	Relapsing fever							
	Kyasanur forest disease							
	Q fever					1		4
	Rabies							
	Coccidioidomycosis					2		3
	Monkeypox							
	Hemorrhagic fever with renal syndrome							
	Western equine encephalitis							
	Tick-borne encephalitis							
	Anthrax							
	Scrub typhus(Tsutsugamushi disease)					2	6	117
	Dengue fever		1	1		22		81
	Eastern equine encephalitis							
	Avian influenza virus infection							
	Nipah virus infection							
	Japanese spotted fever						4	79
	Japanese encephalitis						1	8
	Epidemic typhus							
	Hantavirus pulmonary syndrome							
	Herpes B virus infection							
	Glanders							
	Brucellosis							1
	Venezuelan equine encephalitis							
	Hendra virus infection							
	Botulism						1	3
Malaria			1		22		47	
Tularemia								
Lyme disease					3		10	
Lyssavirus infection(excluding rabies)								
Rift valley fever								
Melioidosis								
Legionellosis		1	1	2	48	11	562	
Leptospirosis					3		26	
Rocky mountain spotted fever								

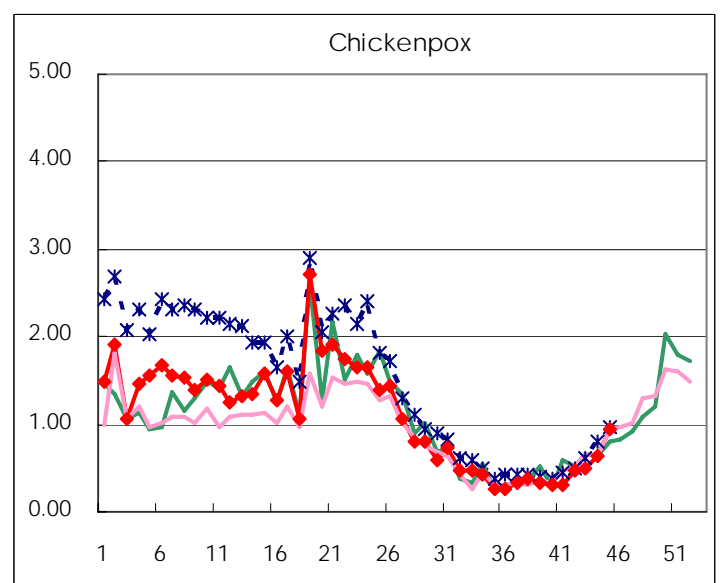
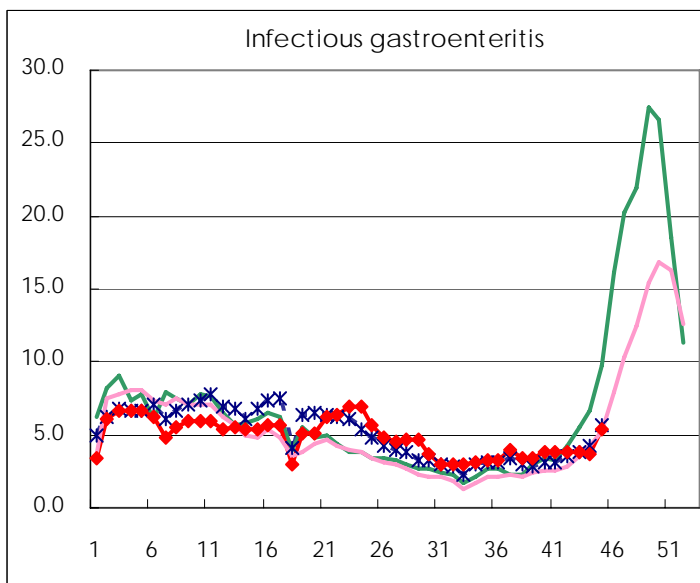
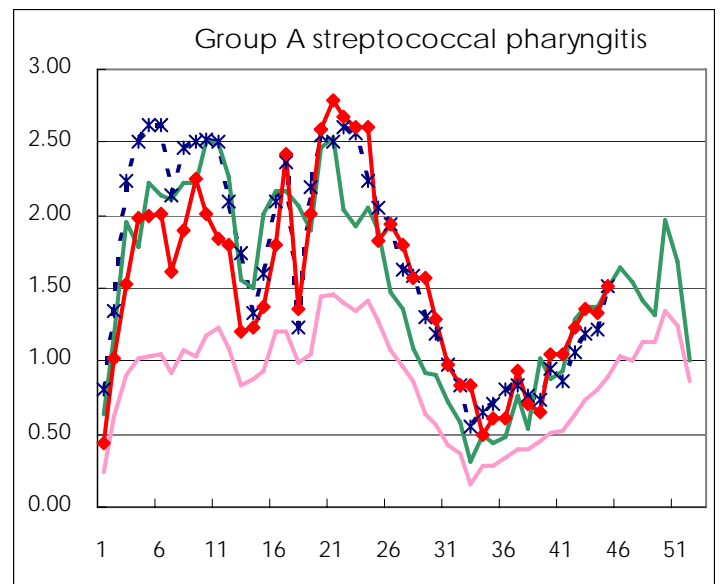
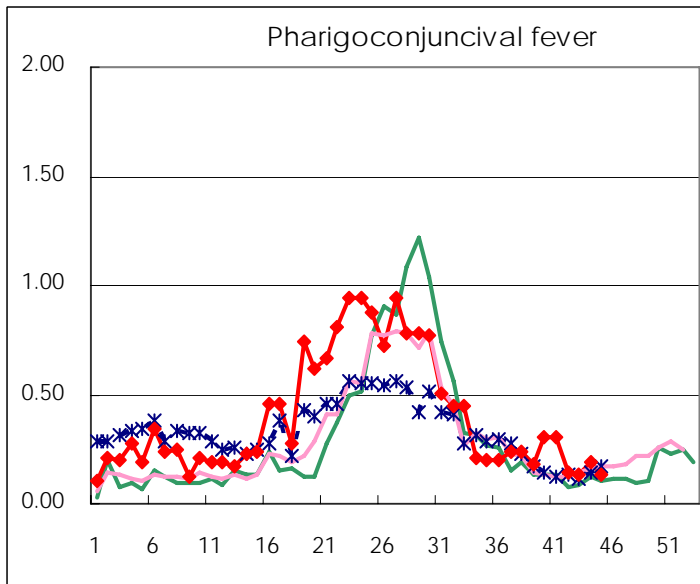
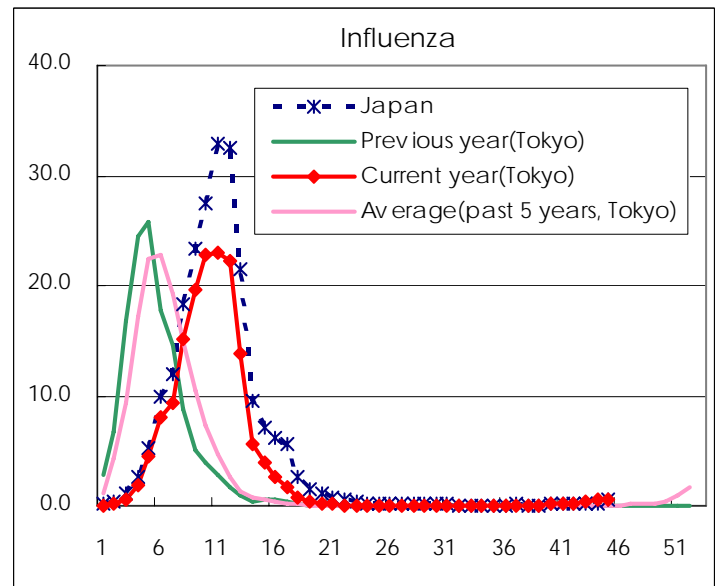
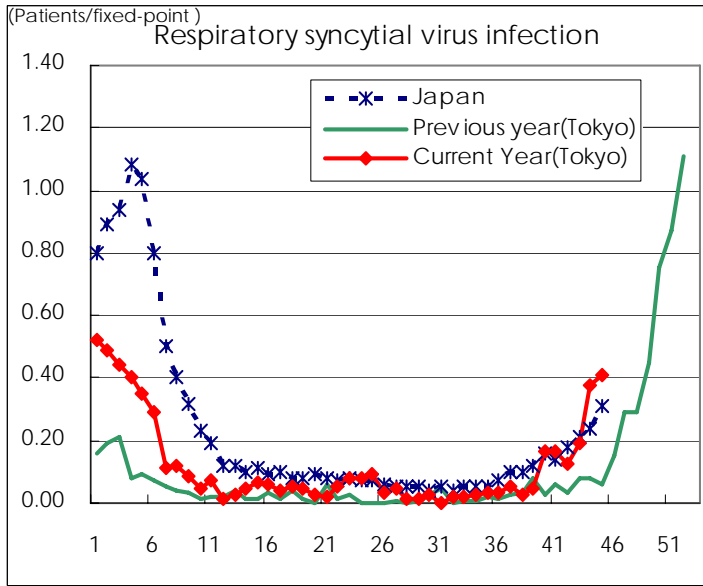
Category	Diseases	Tokyo					Japan	
		42th	43th	44th	45th	Cum 2007	45th	Cum 2007
V	Amebiasis	3	1	5	4	151	10	670
	Viral hepatitis(excluding hepatitis A and E)	1	1			34	3	202
	Acute encephalitis(excluding JE and WNE)					17	1	195
	Cryptosporidiosis					1		6
	Creutzfeldt-Jakob disease			1	1	13	1	121
	Severe invasive streptococcal infections(TSLS)		1			6	2	86
	Acquired immunodeficiency syndrome (AIDS)	10	15	9	12	443	11	1249
	Giardiasis	1	1			15	3	48
	Meningococcal meningitis					2	1	14
	Congenital rubella syndrome							
	Syphilis	3	6	11	4	144	9	609
	Tetanus					1	1	83
	Vancomycin-resistant S. aureus infection							
	Vancomycin-resistant Enterococcus infection		1	1		14	2	68
designated	Influenza (H5N1)							

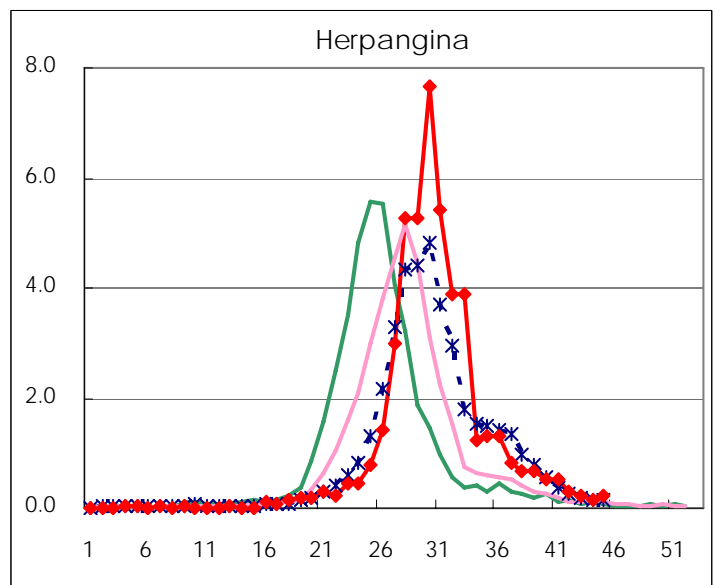
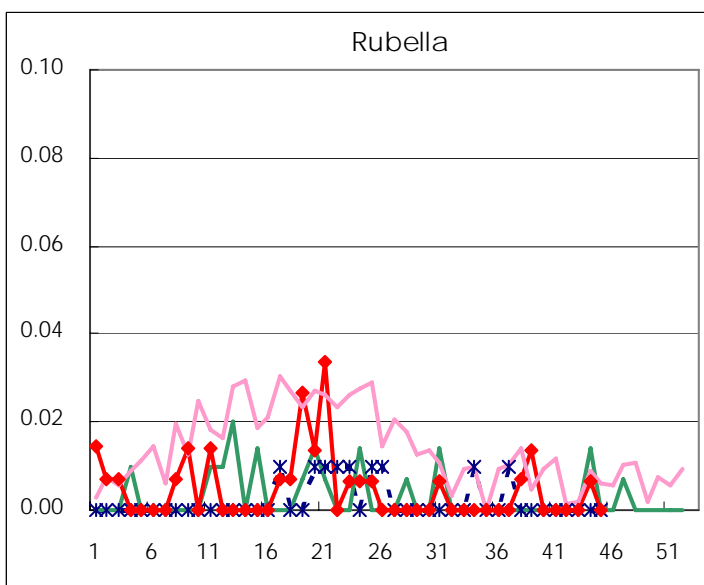
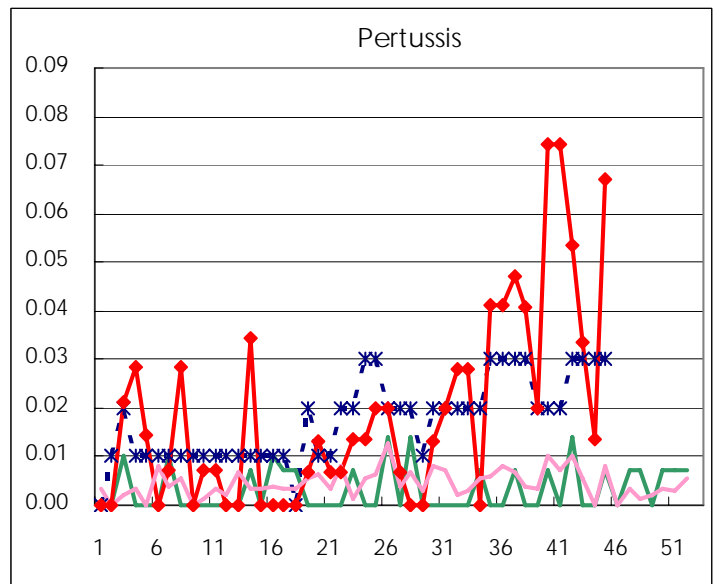
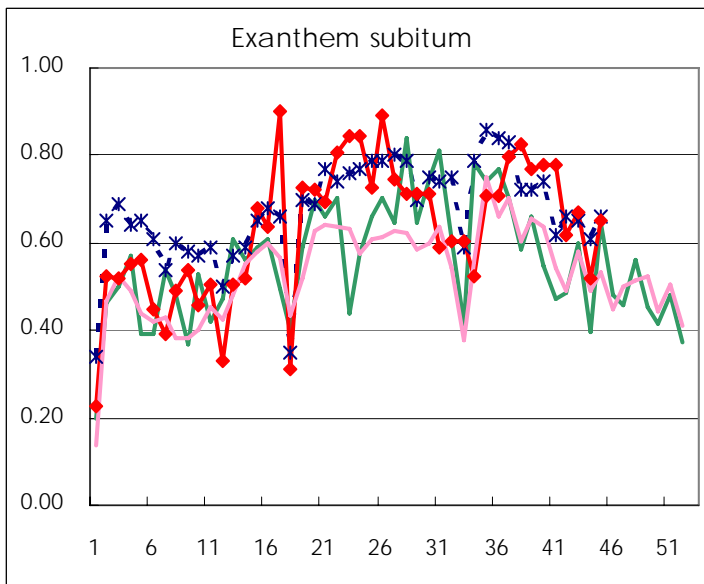
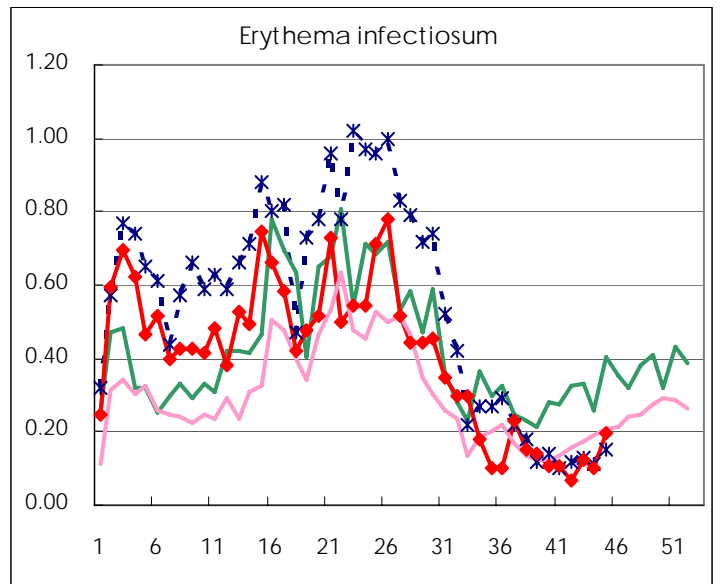
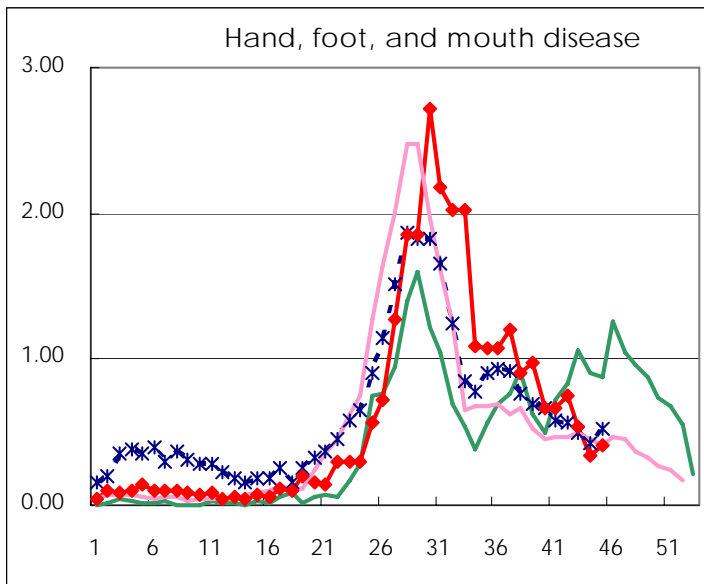
Number of patients with the diseases to be reported
by the designated clinics and hospitals

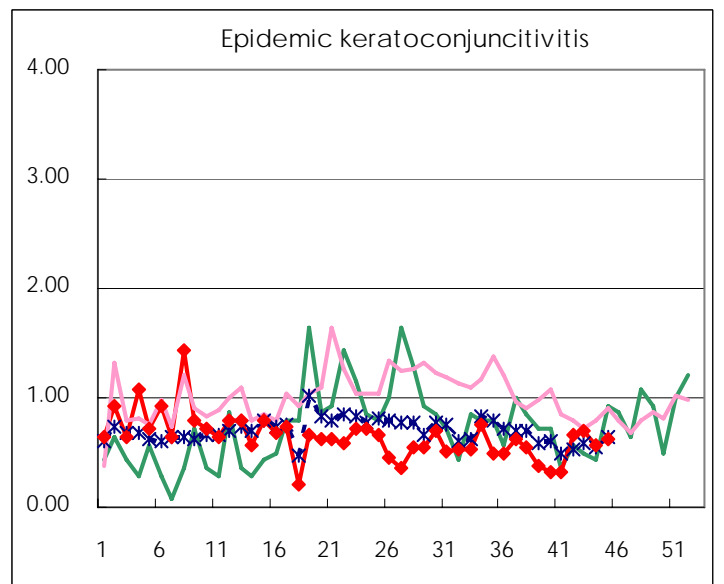
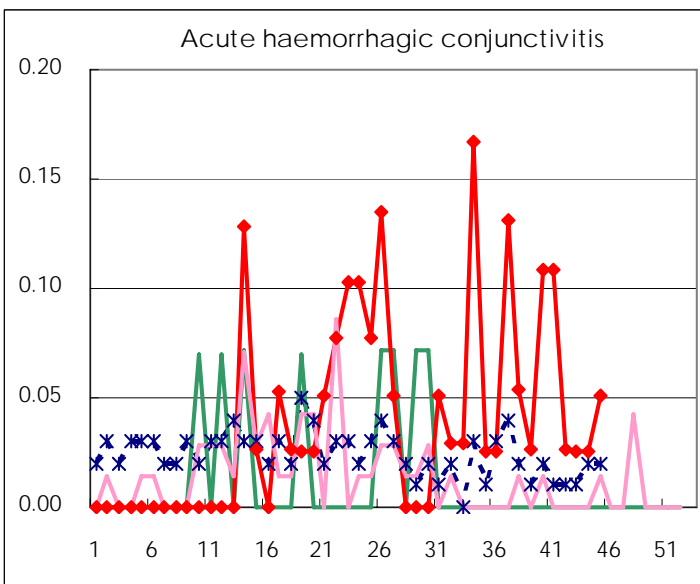
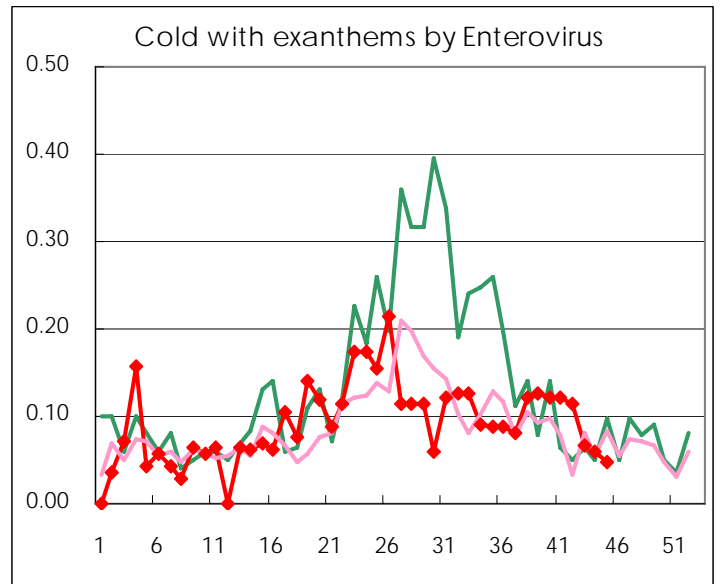
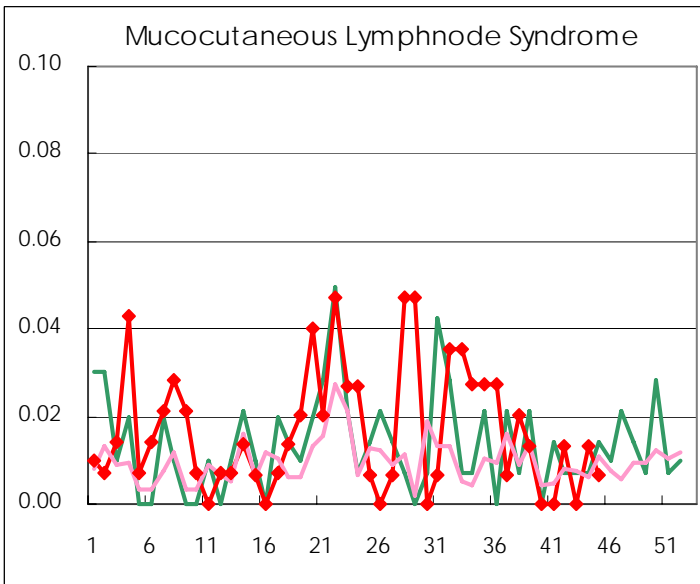
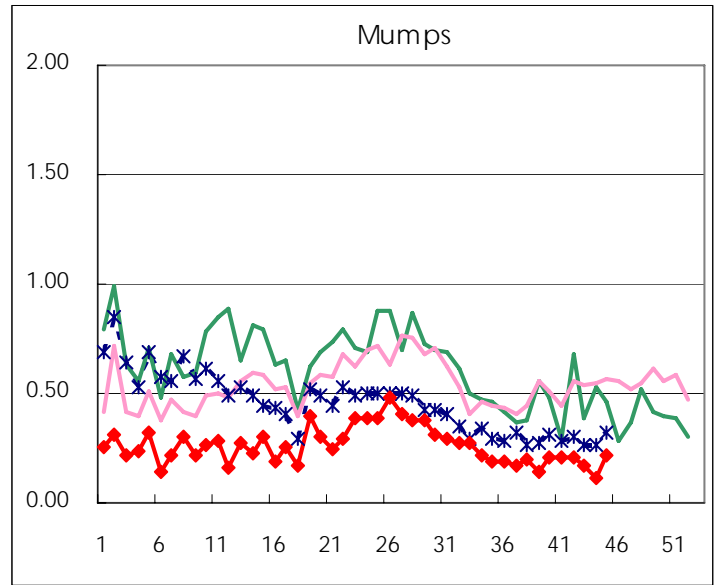
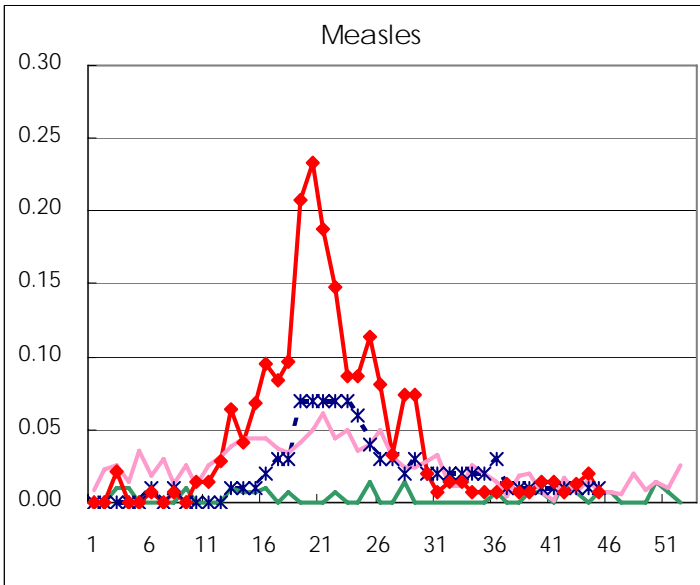
Diseases	2007				4wks total	Cum 2007
	42th	43th	44th	45th		
Respiratory syncytial virus infection	19	29	56	61	165	776
Influenza	45	112	174	185	516	44396
Pharyngoconjunctival fever	22	20	28	20	90	2526
Group A streptococcal pharyngitis	184	203	198	226	811	10014
Infectious gastroenteritis	567	572	556	810	2,505	31326
Chickenpox	72	74	96	141	383	7383
Hand, foot, and mouth disease	113	80	50	62	305	4079
Erythema infectiosum	10	18	15	29	72	2682
Exanthem subitum	93	100	77	97	367	4078
Pertussis	8	5	2	10	25	118
Rubella			1		1	32
Herpangina	44	34	23	35	136	6703
Measles	1	2	3	1	7	298
Mumps	31	25	17	33	106	1709
Cold with exanthems by Enterovirus	17	10	9	7	43	587
Mucocutaneous Lymphnode Syndrome	2		2	1	5	99
Acute hemorrhagic conjunctivitis	1	1	1	2	5	68
Epidemic keratoconjunctivitis	25	27	22	24	98	832
Bacterial meningitis	1	1			2	27
Aseptic meningitis			1	1	2	49
Mycoplasma pneumonia	5	2	6	9	22	173
Chlamydial pneumonia (excluding psittacosis)	1	1	1	1	4	18
Measles in adults	1	2		1	4	257

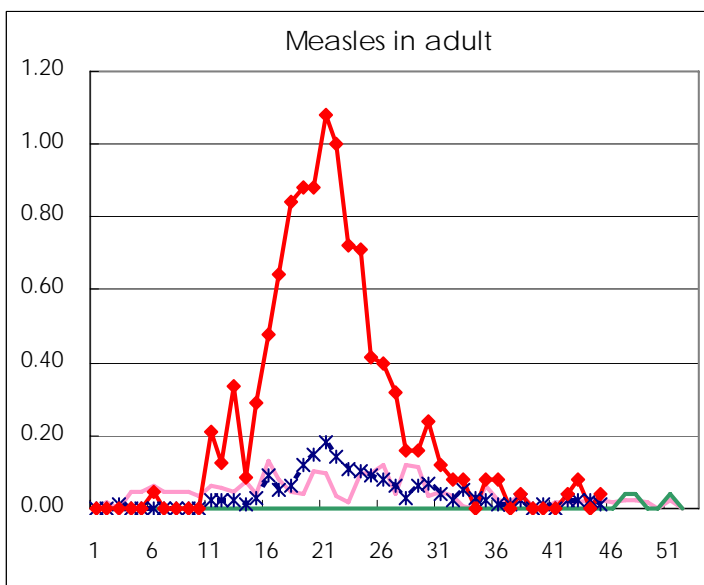
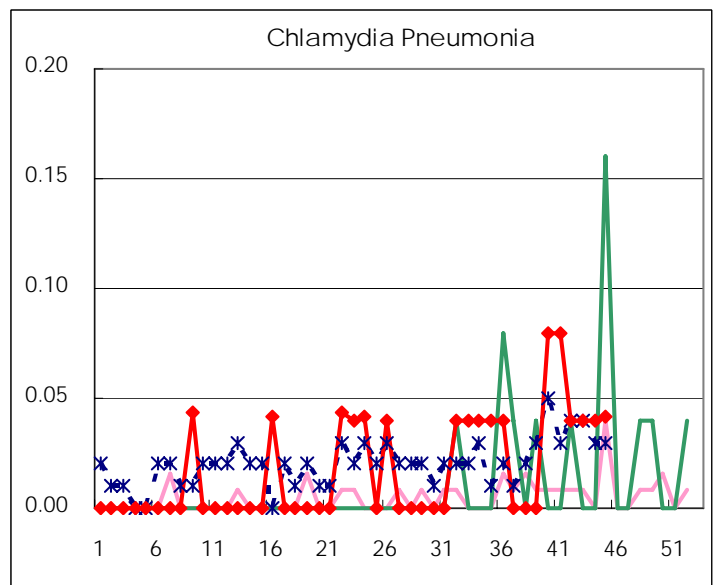
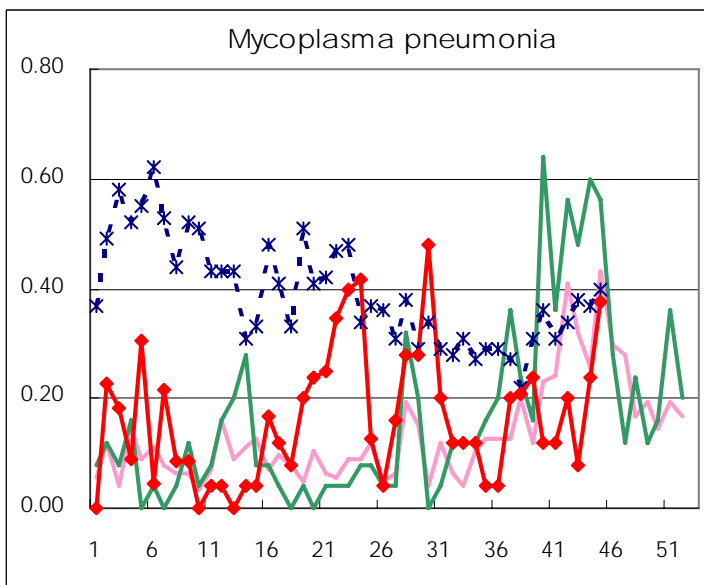
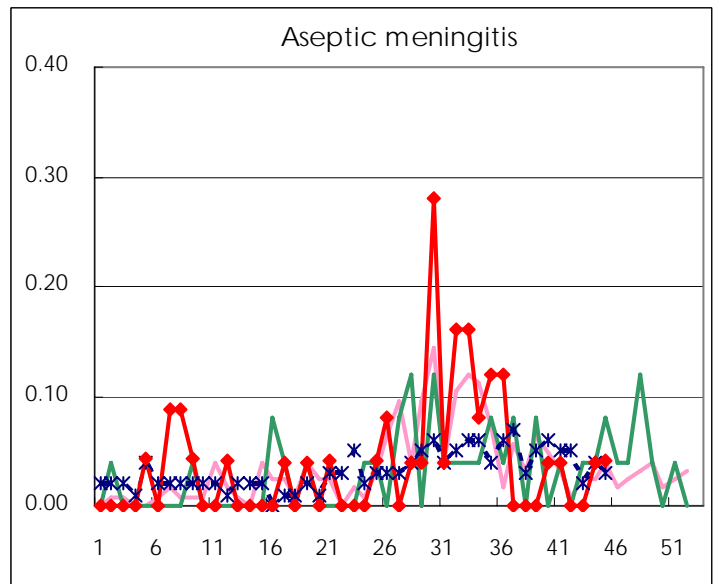
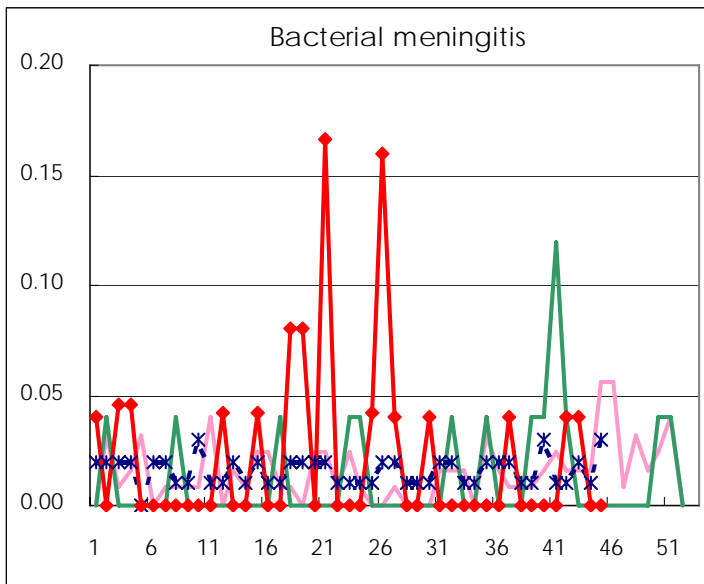
(Blank means 0.)

Disease Trend Graph (weekly reported cases per fixed-point in comparison)









Number of sentinel facilities for weekly reporting		
Types of sentinels	Number of sentinels	Sentinels having reported
Pediatric	150	149
Influenza	290	285
Ophthalmic	39	39
Specially-designated	25	24

Tokyo Metropolitan Government
Infectious Disease Surveillance Center