

---

INFECTIOUS DISEASES WEEKLY REPORT

# TOKYO IDWR

Tokyo Metropolitan Infectious Disease Surveillance Center

## 22 November 2007 / Number 46

### Surveillance System in Tokyo, Japan

The infectious diseases which all physicians must report

All physicians must report to health centers the incidence of the diseases which are shown at page one. Health centers electronically report the individual cases to Tokyo Metropolitan Infectious Disease Surveillance Center.

The infectious diseases required to be reported by the sentinels

The numbers of patients who visit the sentinel clinics or hospitals during a week are reported to health centers in Tokyo. And they electronically report the numbers to Tokyo Metropolitan Infectious Disease Surveillance Center. We have about 400 sentinel clinics and hospitals in Tokyo.

1st Week is early January and 52nd Week is end of December.

Tokyo Metropolitan Institute of Public Health  
Epidemiological Information Office

TEL:81-3-3363-3213 FAX:81-3-5332-7365

e-mail:[idsc@tokyo-eiken.go.jp](mailto:idsc@tokyo-eiken.go.jp)

URL:[idsc.tokyo-eiken.go.jp/](http://idsc.tokyo-eiken.go.jp/)

---

## Number of patients with the diseases which all physicians must report

Category	Diseases	Tokyo					Japan	
		43th	44th	45th	46th	Cum 2007	46th	Cum 2007
I	Ebola hemorrhagic fever							
	Crimean-Congo hemorrhagic fever							
	Smallpox							
	South American hemorrhagic fever							
	Plague							
	Marburg disease							
	Lassa fever							
II	Acute poliomyelitis							
	Tuberculosis	81	80	78	66	2518	289	16171
	Diphtheria							
	Severe Acute Respiratory Syndrome(SARS)							
III	Cholera					2		12
	Shigellosis	2	1	1	2	77	9	422
	Enterohemorrhagic Escherichia coli infection	10	4	4	3	447	47	4356
	Typhoid fever					11	1	44
	Paratyphoid fever	1	1			6		18
IV	Hepatitis E			1		3		50
	West Nile fever							
	Hepatitis A					17	3	136
	Echinococcosis					3		14
	Yellow fever							
	Psittacosis					1		28
	Omsk hemorrhagic fever							
	Relapsing fever							
	Kyasanur forest disease							
	Q fever					1		4
	Rabies							
	Coccidioidomycosis					2		3
	Monkeypox							
	Hemorrhagic fever with renal syndrome							
	Western equine encephalitis							
	Tick-borne encephalitis							
	Anthrax							
	Scrub typhus(Tsutsugamushi disease)			1		3	19	144
	Dengue fever	1	1			22	1	82
	Eastern equine encephalitis							
	Avian influenza virus infection							
	Nipah virus infection							
	Japanese spotted fever						5	84
	Japanese encephalitis							8
	Epidemic typhus							
	Hantavirus pulmonary syndrome							
	Herpes B virus infection							
	Glanders							
	Brucellosis							1
	Venezuelan equine encephalitis							
	Hendra virus infection							
	Botulism							3
Malaria		1			22	1	48	
Tularemia								
Lyme disease					3		10	
Lyssavirus infection(excluding rabies)								
Rift valley fever								
Melioidosis								
Legionellosis	1	1	2		48	7	573	
Leptospirosis					3		27	
Rocky mountain spotted fever								

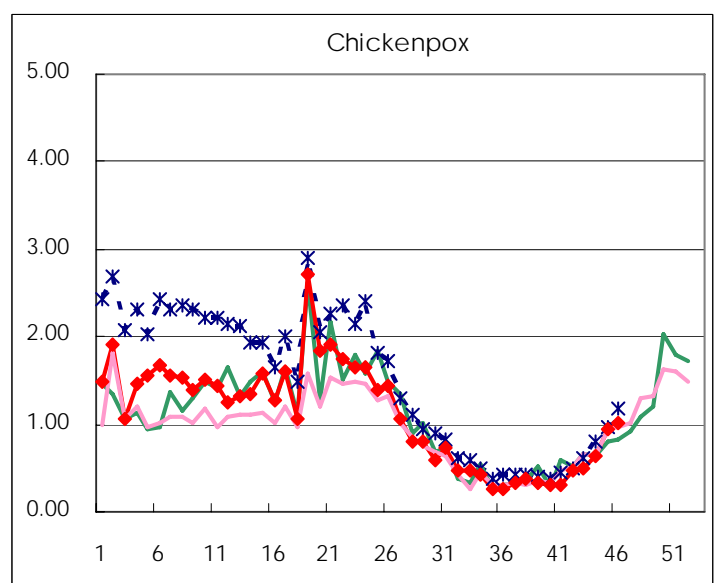
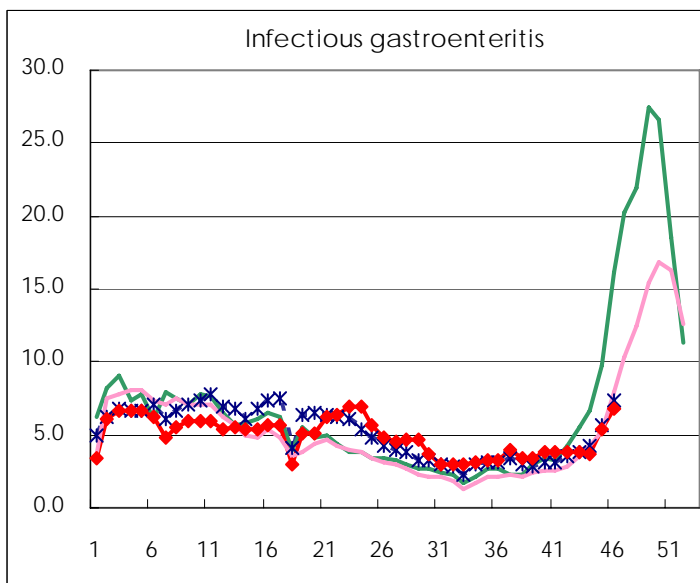
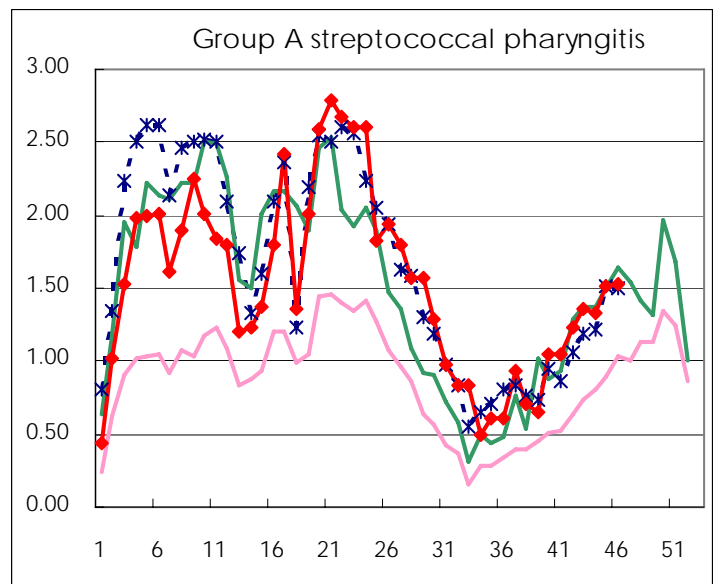
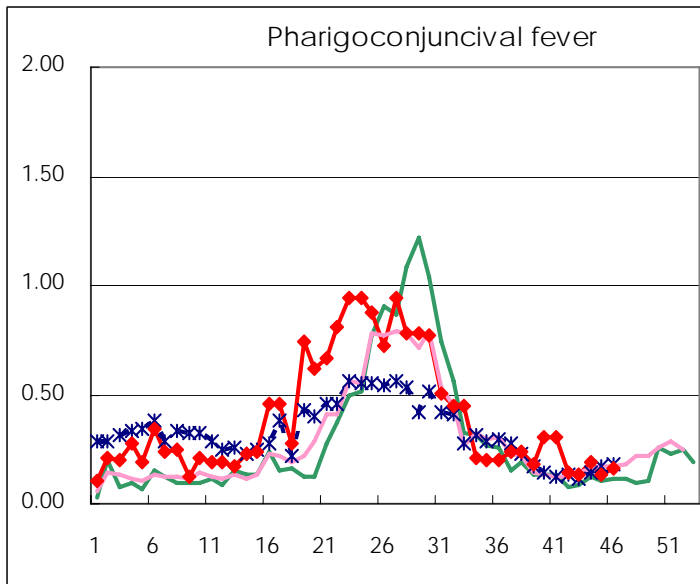
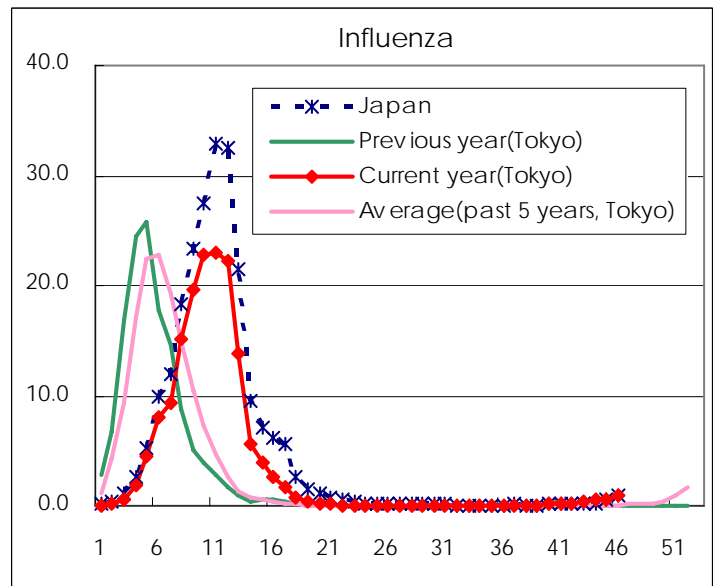
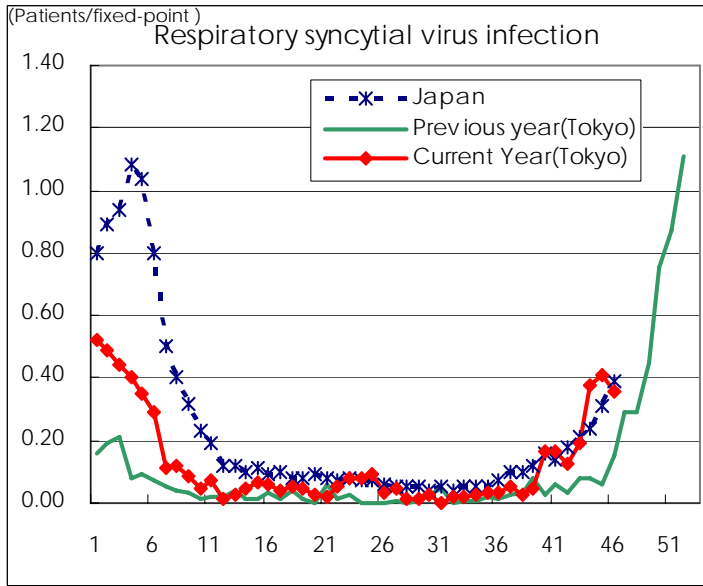
Category	Diseases	Tokyo					Japan	
		43th	44th	45th	46th	Cum 2007	46th	Cum 2007
V	Amebiasis	1	5	4	3	154	9	684
	Viral hepatitis(excluding hepatitis A and E)	1			1	35	4	209
	Acute encephalitis(excluding JE and WNE)					17		196
	Cryptosporidiosis					1		6
	Creutzfeldt-Jakob disease		1	1		13		123
	Severe invasive streptococcal infections(TSLS)	1				6	1	87
	Acquired immunodeficiency syndrome (AIDS)	15	9	12	12	455	16	1285
	Giardiasis	1				15		48
	Meningococcal meningitis					2		14
	Congenital rubella syndrome							
	Syphilis	6	10	4	2	145	10	630
	Tetanus					1	2	85
	Vancomycin-resistant S. aureus infection							
	Vancomycin-resistant Enterococcus infection	1	1			14		68
designated	Influenza (H5N1)							

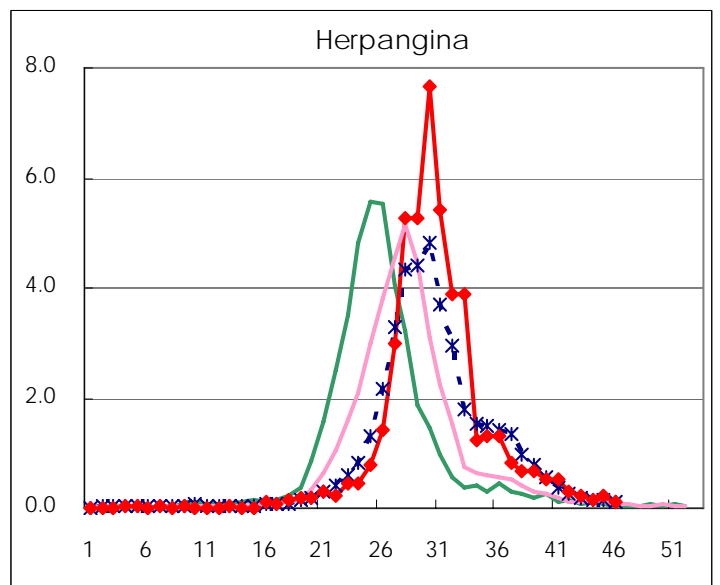
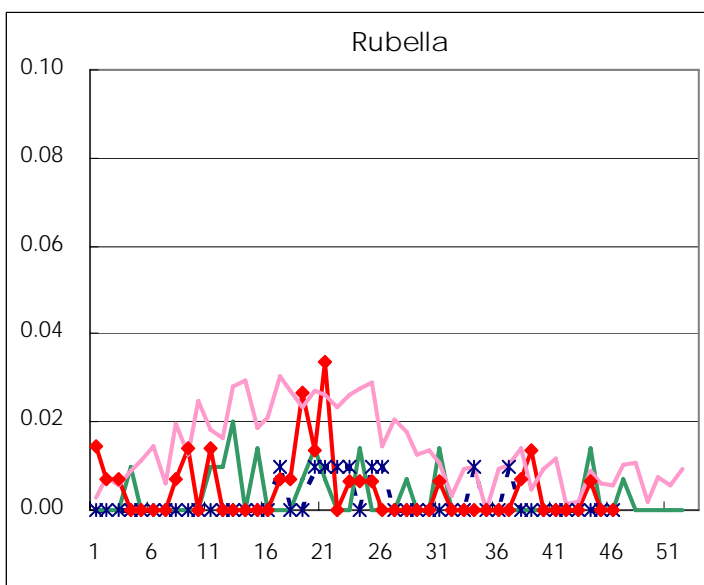
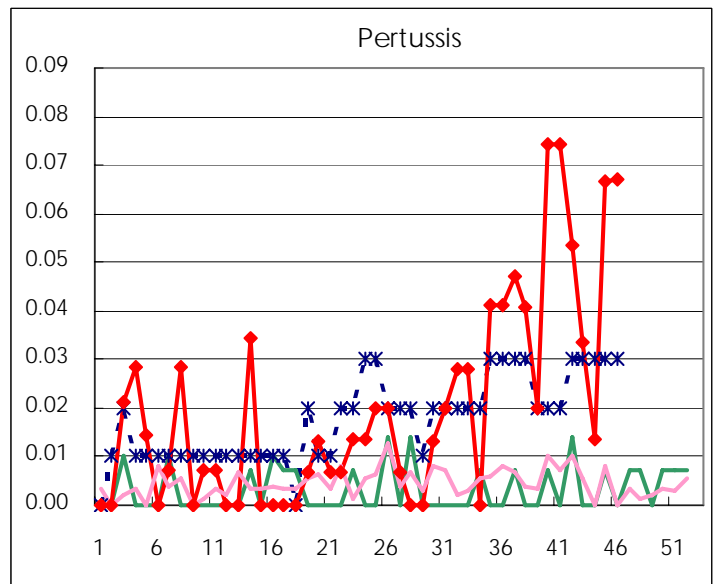
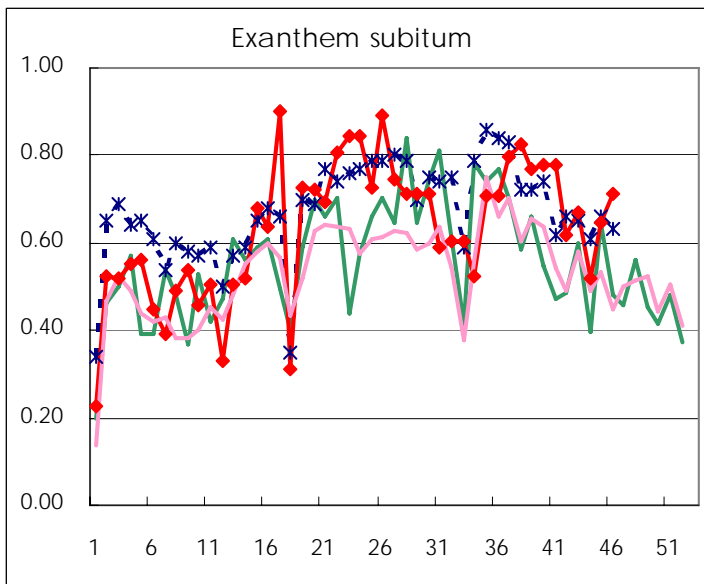
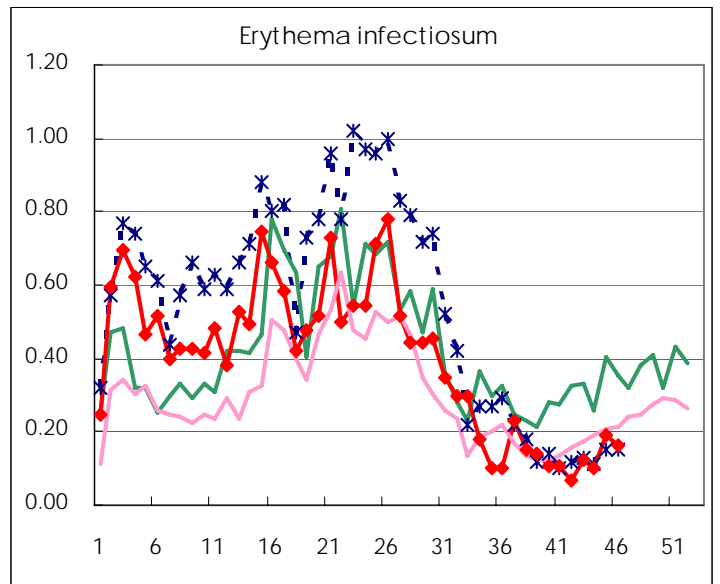
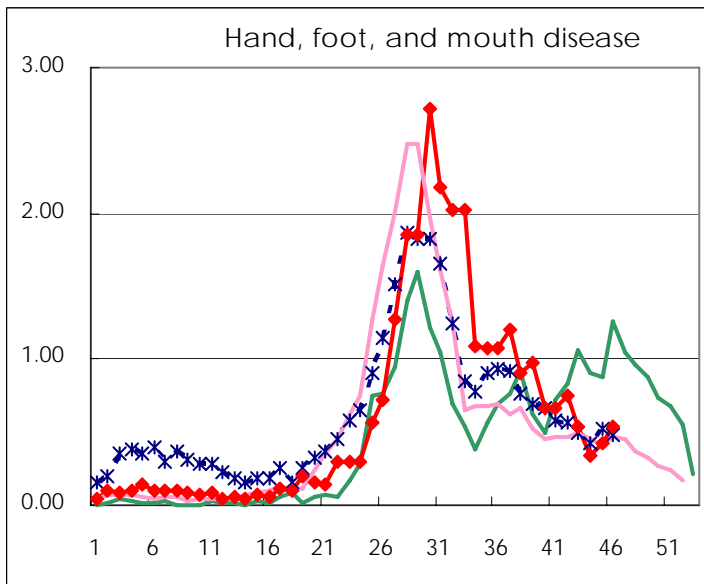
Number of patients with the diseases to be reported  
by the designated clinics and hospitals

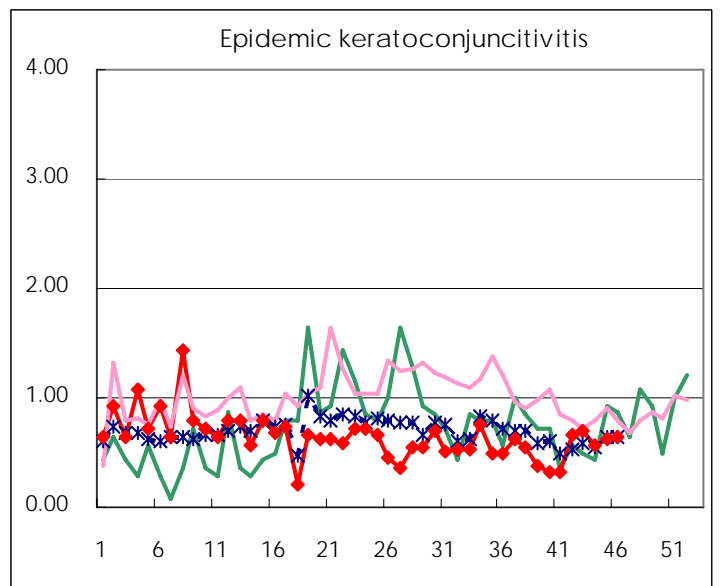
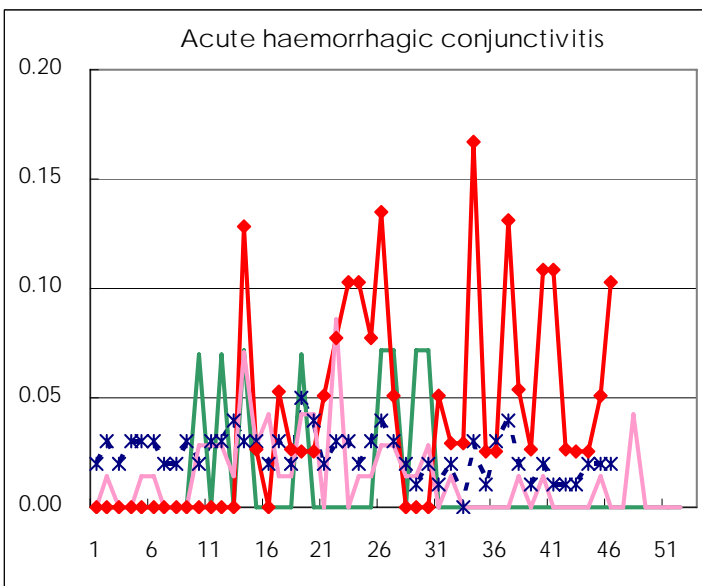
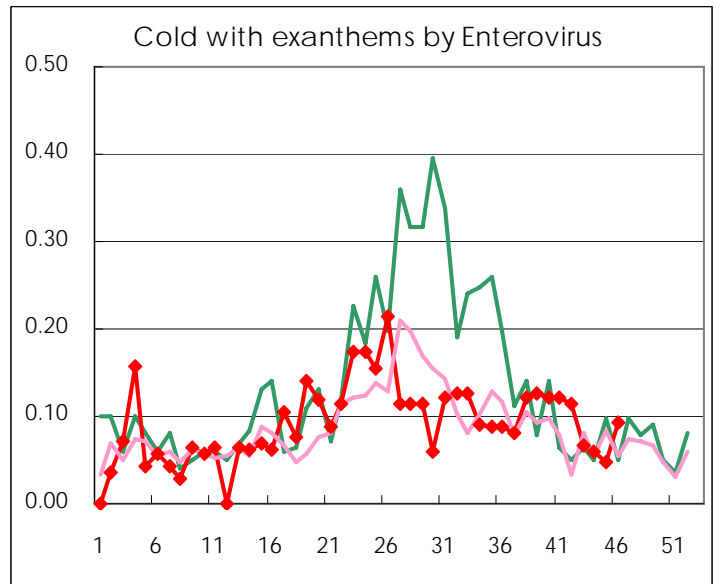
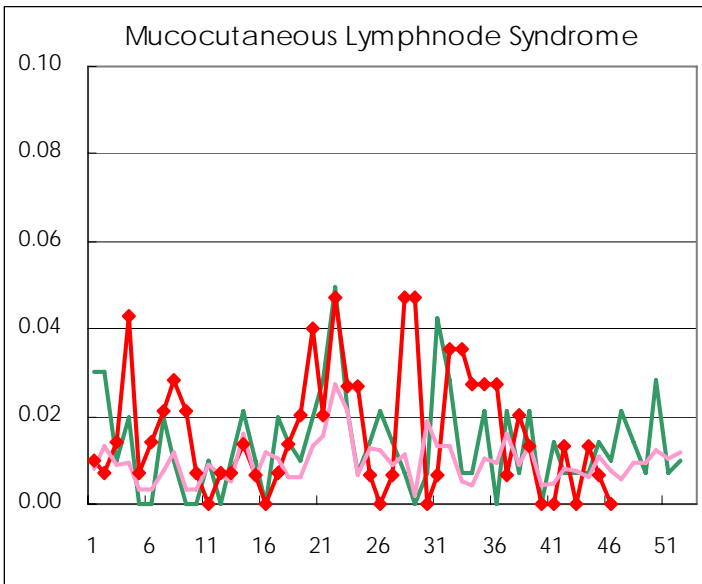
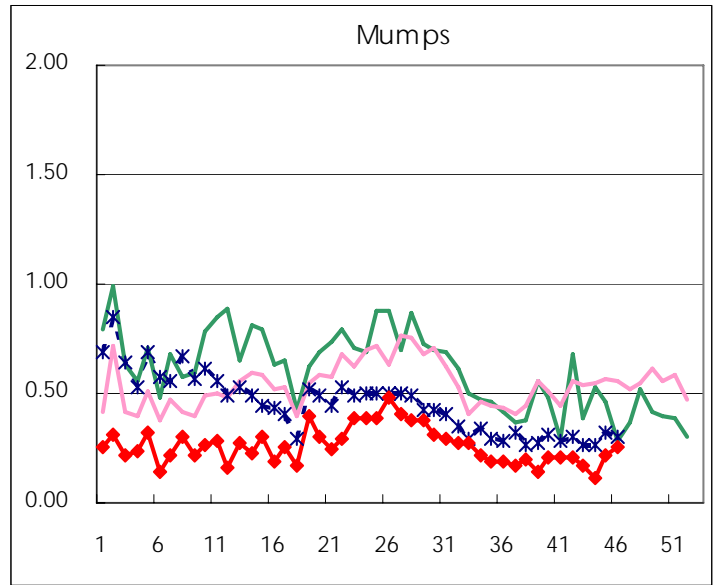
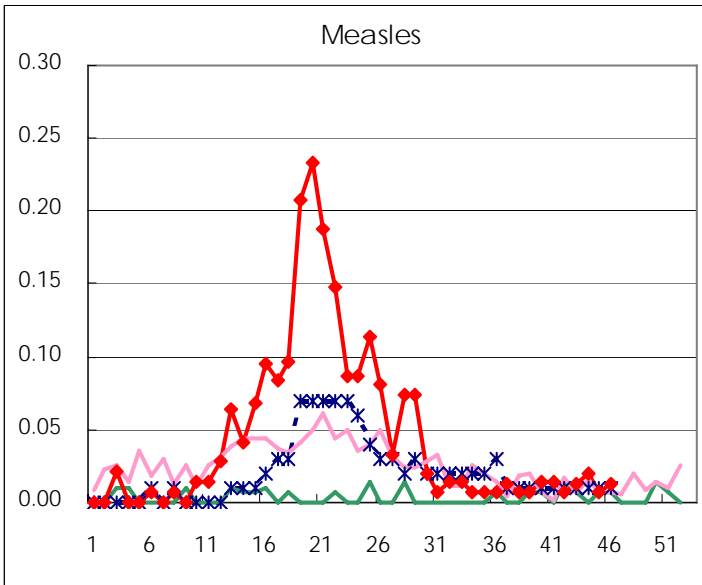
Diseases	2007				4wks total	Cum 2007
	43th	44th	45th	46th		
Respiratory syncytial virus infection	29	56	61	53	199	829
Influenza	112	174	185	293	764	44689
Pharyngoconjunctival fever	20	28	20	24	92	2550
Group A streptococcal pharyngitis	203	198	227	227	855	10242
Infectious gastroenteritis	572	556	814	1,002	2,944	32332
Chickenpox	74	96	141	150	461	7533
Hand, foot, and mouth disease	80	50	63	80	273	4160
Erythema infectiosum	18	15	29	24	86	2706
Exanthem subitum	100	77	97	106	380	4184
Pertussis	5	2	10	10	27	128
Rubella		1			1	32
Herpangina	34	23	35	19	111	6722
Measles	2	3	1	2	8	300
Mumps	25	17	33	38	113	1747
Cold with exanthems by Enterovirus	10	9	7	14	40	601
Mucocutaneous Lymphnode Syndrome		2	1		3	99
Acute hemorrhagic conjunctivitis	1	1	2	4	8	72
Epidemic keratoconjunctivitis	27	22	24	25	98	857
Bacterial meningitis	1				1	27
Aseptic meningitis		1	1	1	3	50
Mycoplasma pneumonia	2	6	9	8	25	181
Chlamydial pneumonia (excluding psittacosis)	1	1	1		3	18
Measles in adults	2		1		3	257

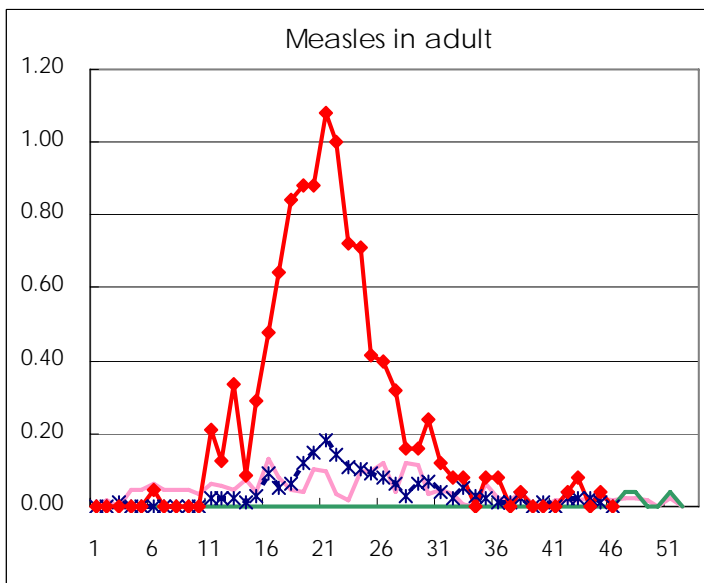
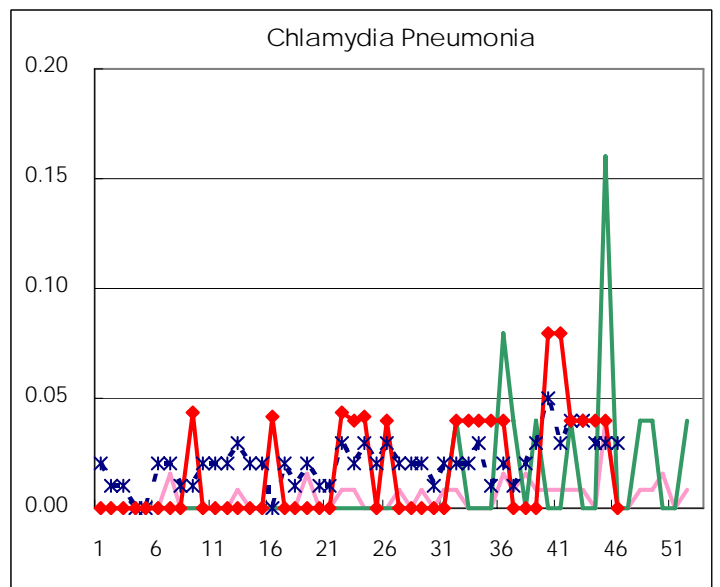
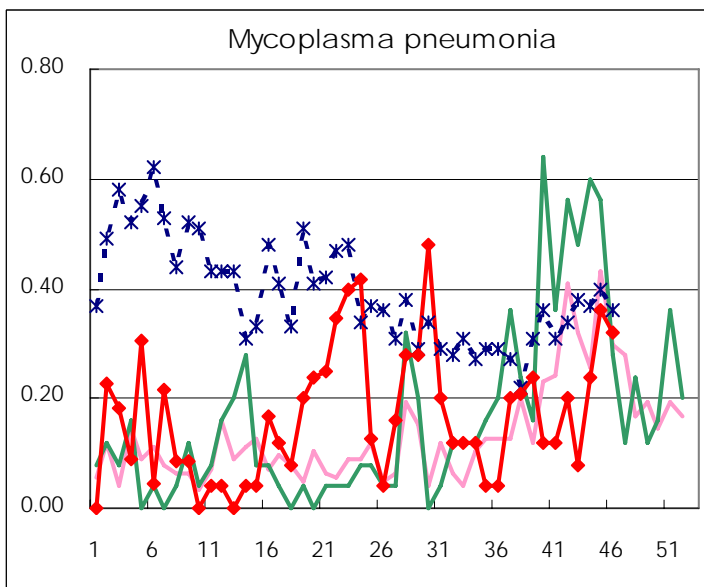
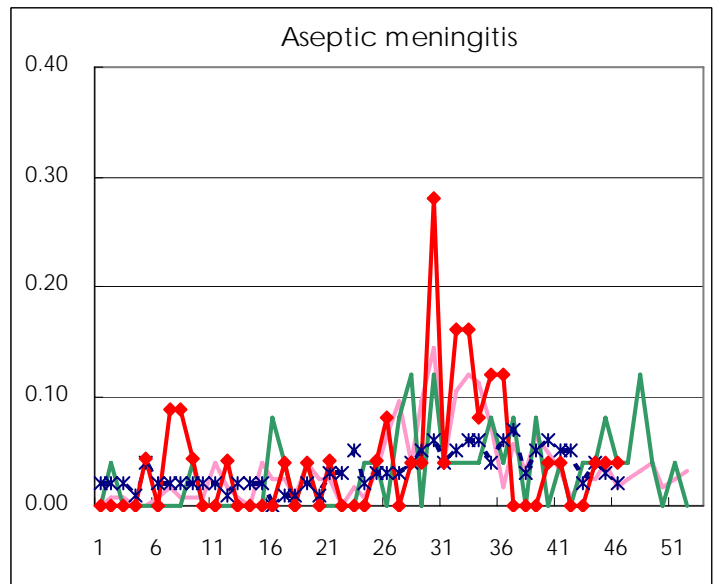
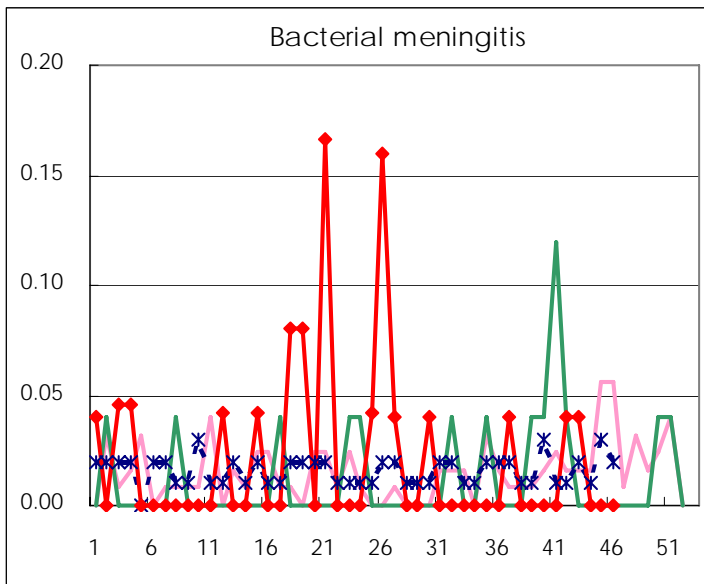
( Blank means 0. )

# Disease Trend Graph (weekly reported cases per fixed-point in comparison)









Number of sentinel facilities for weekly reporting		
Types of sentinels	Number of sentinels	Sentinels having reported
Pediatric	150	149
Influenza	290	286
Ophthalmic	39	39
Specially-designated	25	25

Tokyo Metropolitan Government  
Infectious Disease Surveillance Center