

---

INFECTIOUS DISEASES WEEKLY REPORT

# TOKYO IDWR

Tokyo Metropolitan Infectious Disease Surveillance Center

## 6 December 2007 / Number 48

### Surveillance System in Tokyo, Japan

The infectious diseases which all physicians must report

All physicians must report to health centers the incidence of the diseases which are shown at page one. Health centers electronically report the individual cases to Tokyo Metropolitan Infectious Disease Surveillance Center.

The infectious diseases required to be reported by the sentinels

The numbers of patients who visit the sentinel clinics or hospitals during a week are reported to health centers in Tokyo. And they electronically report the numbers to Tokyo Metropolitan Infectious Disease Surveillance Center. We have about 400 sentinel clinics and hospitals in Tokyo.

1st Week is early January and 52nd Week is end of December.

Tokyo Metropolitan Institute of Public Health  
Epidemiological Information Office

TEL:81-3-3363-3213 FAX:81-3-5332-7365

e-mail:[idsc@tokyo-eiken.go.jp](mailto:idsc@tokyo-eiken.go.jp)

URL:[idsc.tokyo-eiken.go.jp/](http://idsc.tokyo-eiken.go.jp/)

---

## Number of patients with the diseases which all physicians must report

Category	Diseases	Tokyo					Japan	
		45th	46th	47th	48th	Cum 2007	48th	Cum 2007
I	Ebola hemorrhagic fever							
	Crimean-Congo hemorrhagic fever							
	Smallpox							
	South American hemorrhagic fever							
	Plague							
	Marburg disease							
	Lassa fever							
II	Acute poliomyelitis							
	Tuberculosis	81	97	59	64	2679	236	17495
	Diphtheria							
	Severe Acute Respiratory Syndrome(SARS)							
III	Cholera					2		12
	Shigellosis	1	2		2	79	4	432
	Enterohemorrhagic Escherichia coli infection	4	3	10	9	466	39	4474
	Typhoid fever					11		44
	Paratyphoid fever				1	7	1	19
IV	Hepatitis E	1				3		50
	West Nile fever							
	Hepatitis A					17	2	141
	Echinococcosis					3		15
	Yellow fever							
	Psittacosis					1		29
	Omsk hemorrhagic fever							
	Relapsing fever							
	Kyasanur forest disease							
	Q fever					1		5
	Rabies							
	Coccidioidomycosis					2		3
	Monkeypox							
	Hemorrhagic fever with renal syndrome							
	Western equine encephalitis							
	Tick-borne encephalitis							
	Anthrax							
	Scrub typhus(Tsutsugamushi disease)		1	1	4	8	29	220
	Dengue fever					22	1	84
	Eastern equine encephalitis							
	Avian influenza virus infection							
	Nipah virus infection							
	Japanese spotted fever							89
	Japanese encephalitis							9
	Epidemic typhus							
	Hantavirus pulmonary syndrome							
	Herpes B virus infection							
	Glanders							
	Brucellosis							1
	Venezuelan equine encephalitis							
	Hendra virus infection							
	Botulism							3
Malaria					22	1	49	
Tularemia								
Lyme disease					3		10	
Lyssavirus infection(excluding rabies)								
Rift valley fever								
Melioidosis								
Legionellosis	2		2	1	51	7	599	
Leptospirosis					3		27	
Rocky mountain spotted fever								

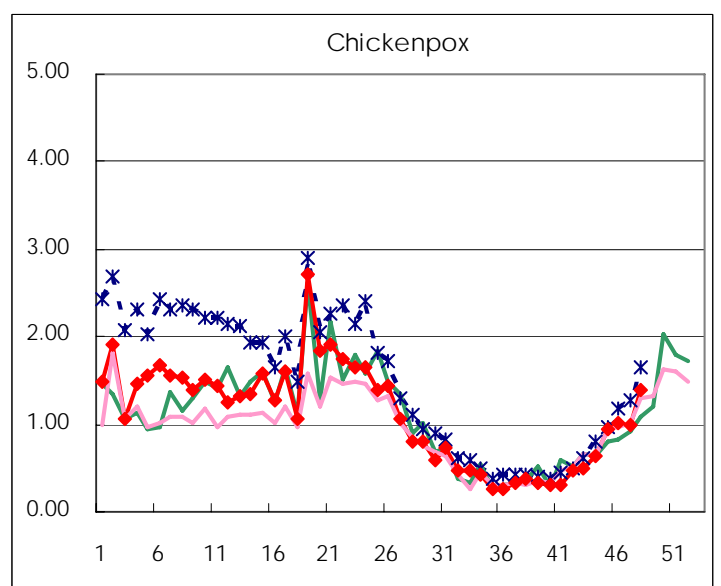
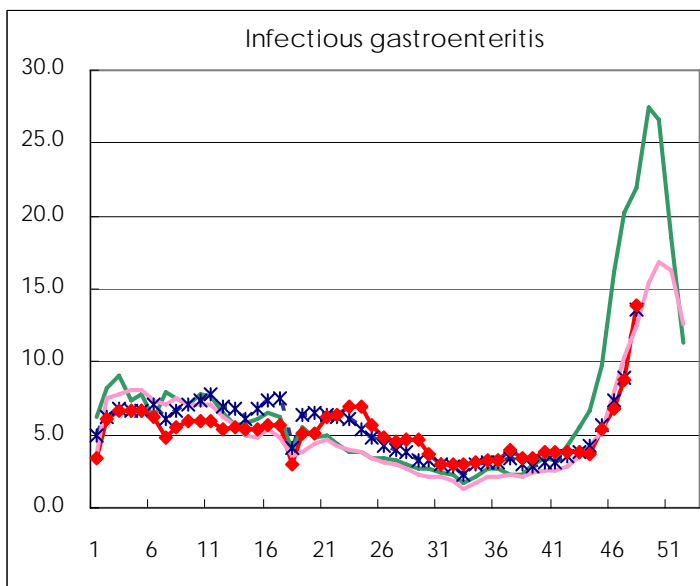
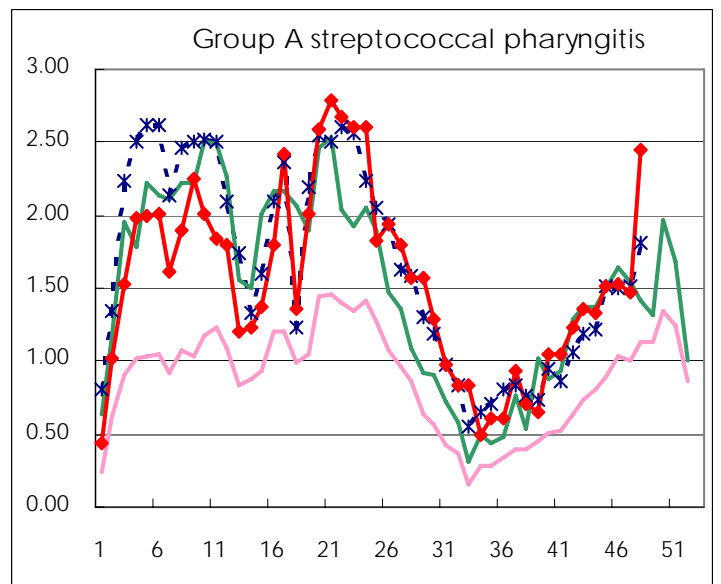
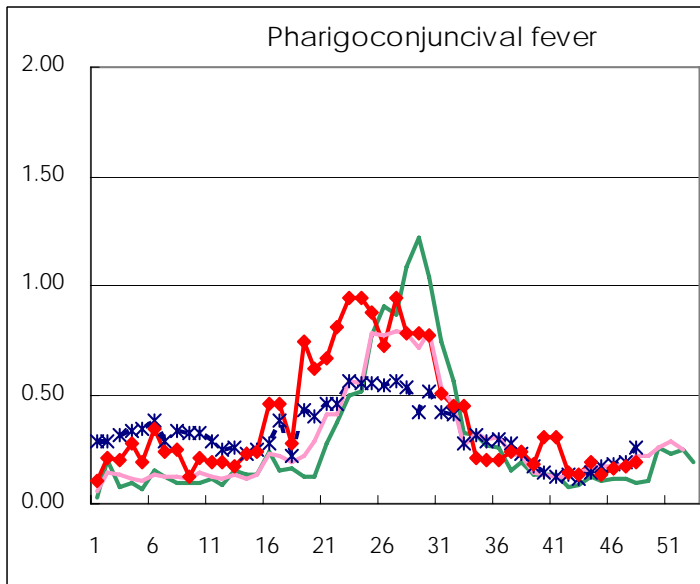
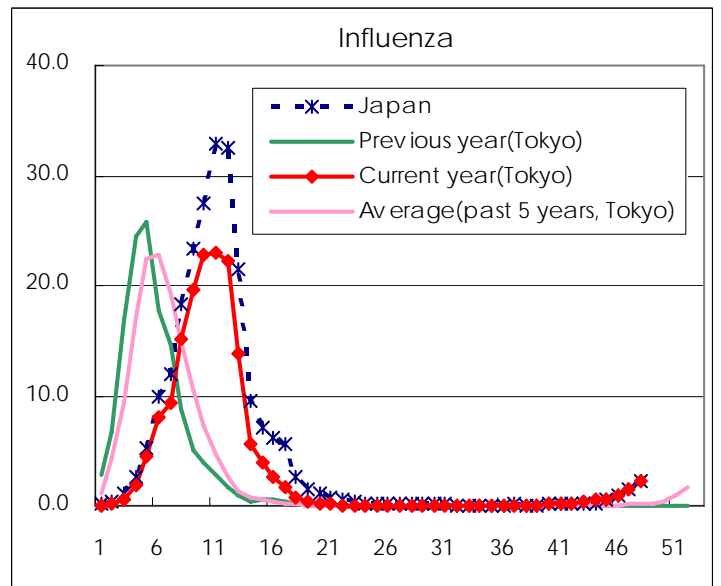
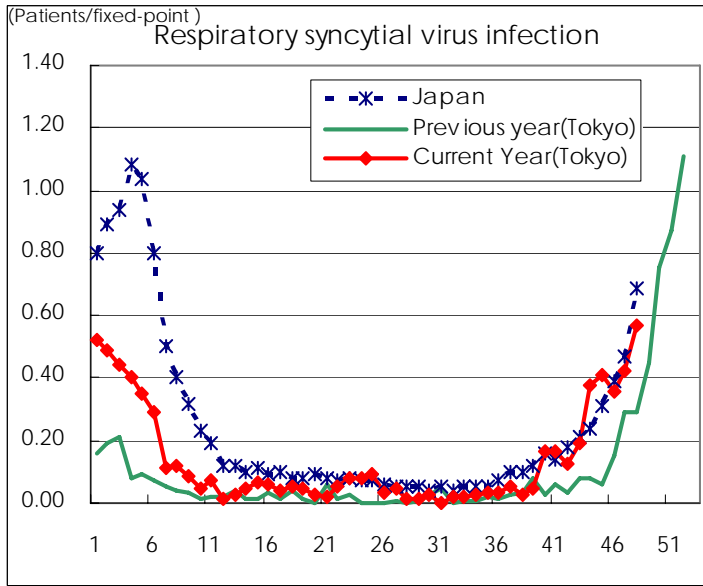
Category	Diseases	Tokyo					Japan	
		45th	46th	47th	48th	Cum 2007	48th	Cum 2007
V	Amebiasis	4	3	1	3	158	9	709
	Viral hepatitis(excluding hepatitis A and E)		1	1		36	2	214
	Acute encephalitis(excluding JE and WNE)			1		18		204
	Cryptosporidiosis					1		6
	Creutzfeldt-Jakob disease	1			2	15	6	132
	Severe invasive streptococcal infections(TSLS)					6	1	90
	Acquired immunodeficiency syndrome (AIDS)	12	12	6	8	469	8	1322
	Giardiasis					15	1	49
	Meningococcal meningitis			1		3		15
	Congenital rubella syndrome							
	Syphilis	4	2	1	2	148	14	656
	Tetanus					1	1	87
	Vancomycin-resistant S. aureus infection							
	Vancomycin-resistant Enterococcus infection				1	15	2	73
designated	Influenza (H5N1)							

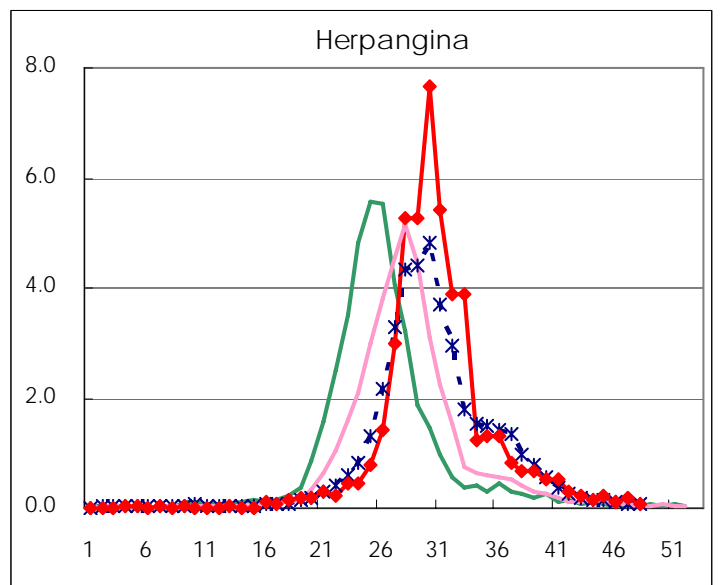
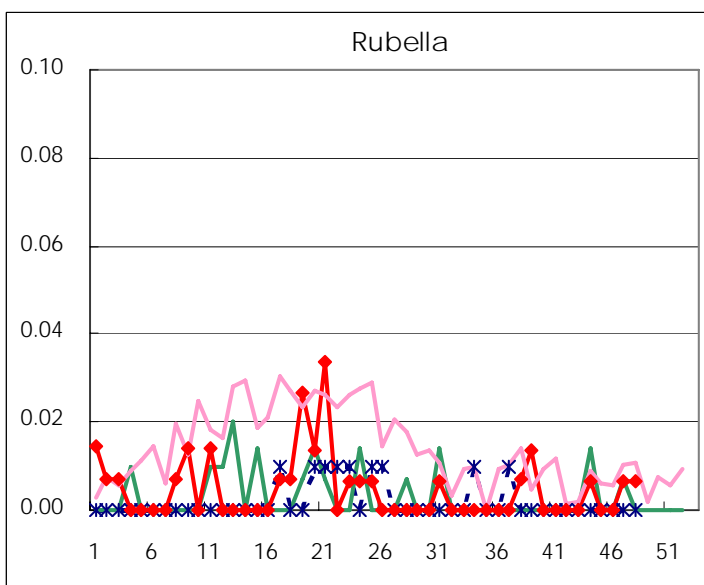
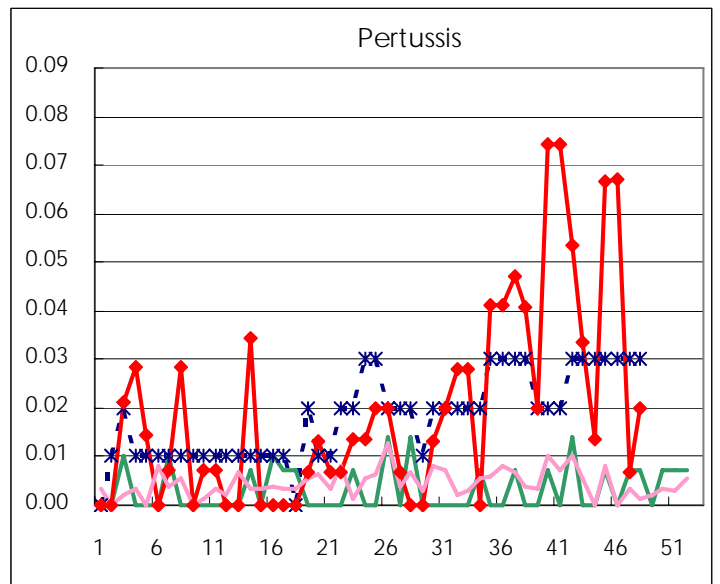
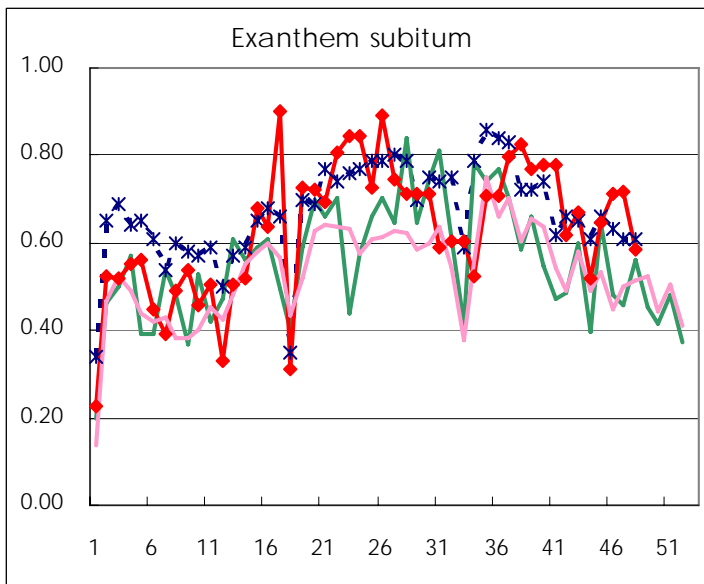
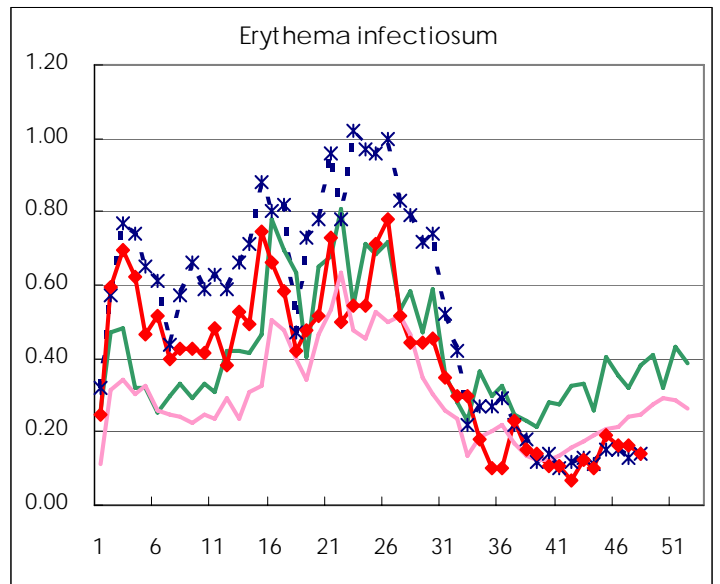
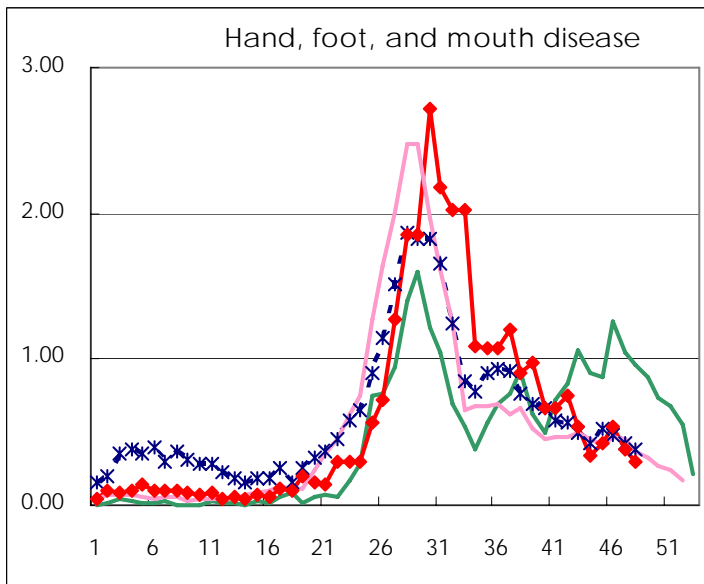
Number of patients with the diseases to be reported  
by the designated clinics and hospitals

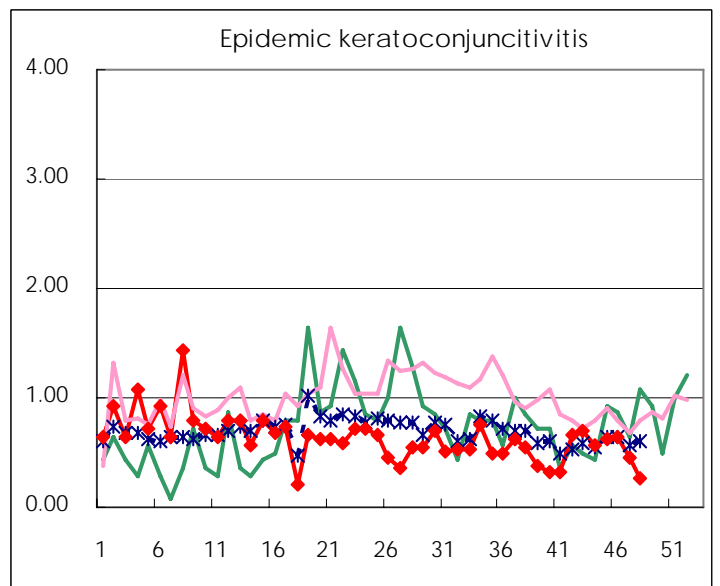
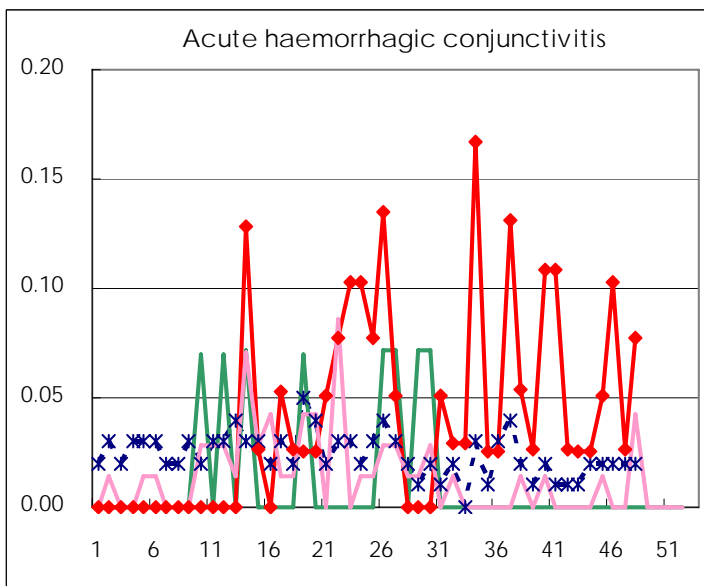
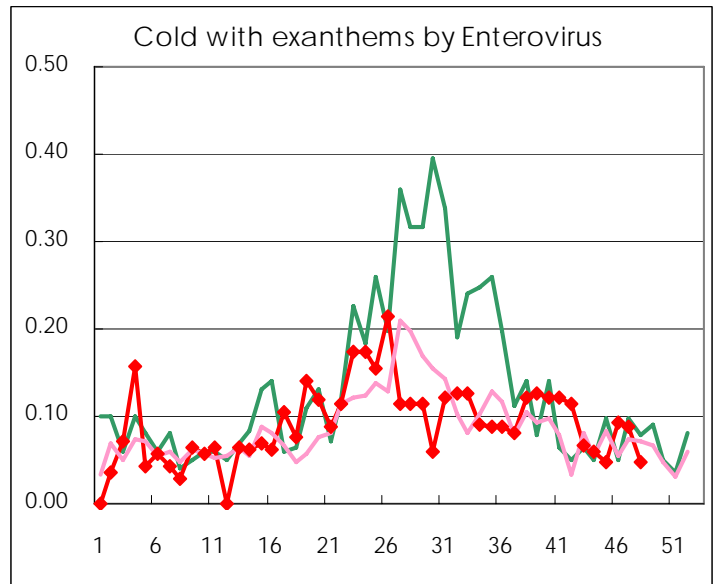
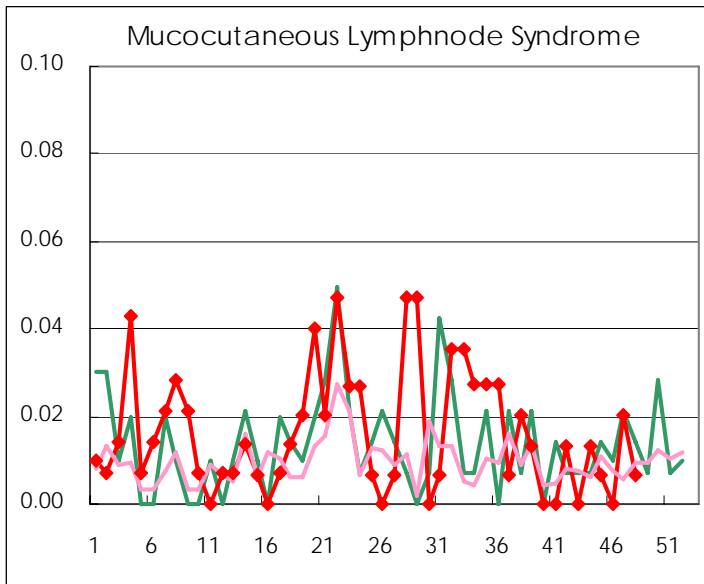
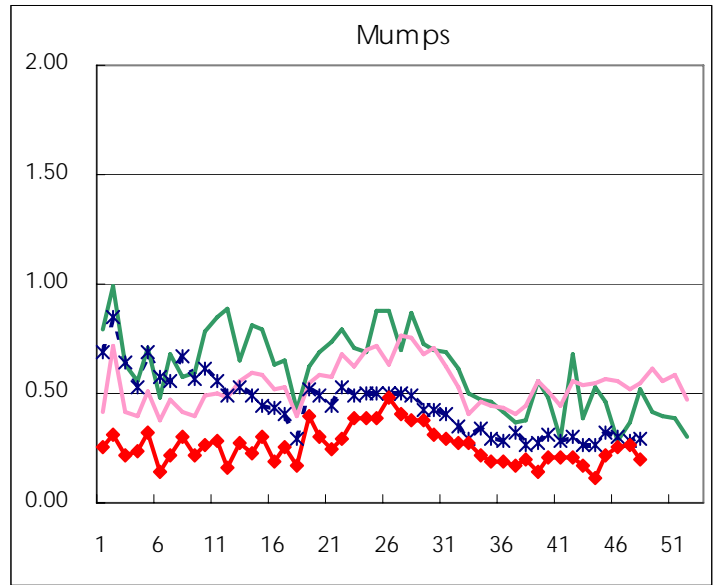
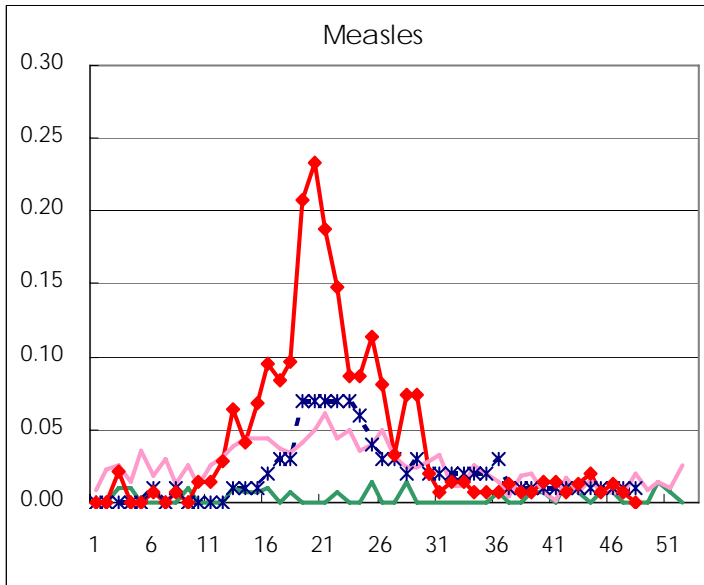
Diseases	2007				4wks total	Cum 2007
	45th	46th	47th	48th		
Respiratory syncytial virus infection	61	53	63	85	262	977
Influenza	185	293	416	651	1,545	45756
Pharyngoconjunctival fever	20	24	25	28	97	2603
Group A streptococcal pharyngitis	227	227	220	364	1,038	10826
Infectious gastroenteritis	814	1,002	1,309	2,070	5,195	35711
Chickenpox	141	150	149	206	646	7888
Hand, foot, and mouth disease	63	80	56	45	244	4261
Erythema infectiosum	29	24	24	21	98	2751
Exanthem subitum	97	106	107	87	397	4378
Pertussis	10	10	1	3	24	132
Rubella			1	1	2	34
Herpangina	35	19	29	12	95	6763
Measles	1	2	1		4	301
Mumps	33	38	40	29	140	1816
Cold with exanthems by Enterovirus	7	14	13	7	41	621
Mucocutaneous Lymphnode Syndrome	1		3	1	5	103
Acute hemorrhagic conjunctivitis	2	4	1	3	10	76
Epidemic keratoconjunctivitis	24	25	17	10	76	884
Bacterial meningitis			1	1	2	29
Aseptic meningitis	1	1			2	50
Mycoplasma pneumonia	9	8	7	13	37	201
Chlamydial pneumonia (excluding psittacosis)	1		1		2	19
Measles in adults	1		1		2	258

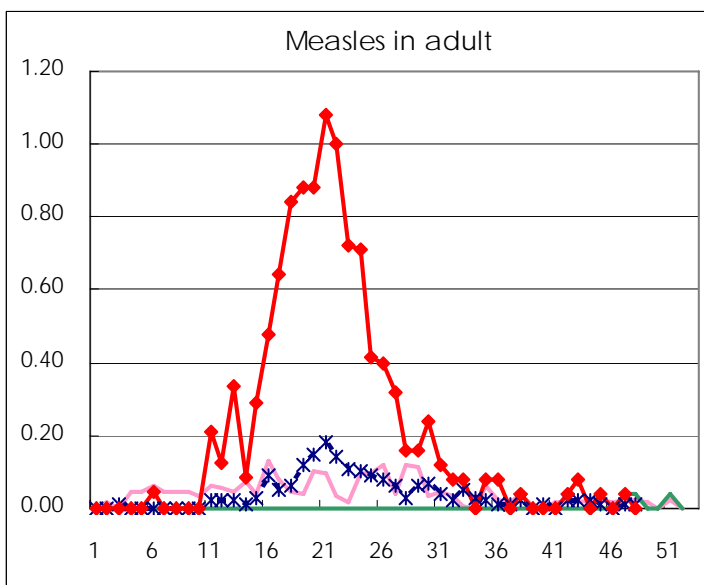
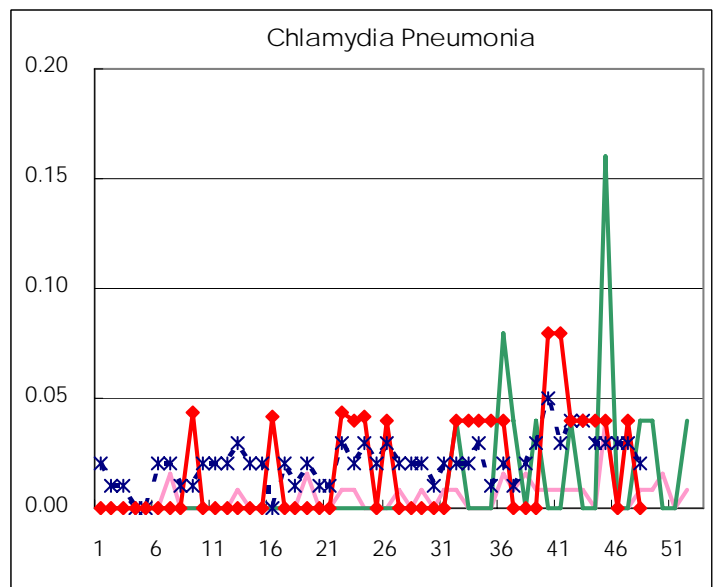
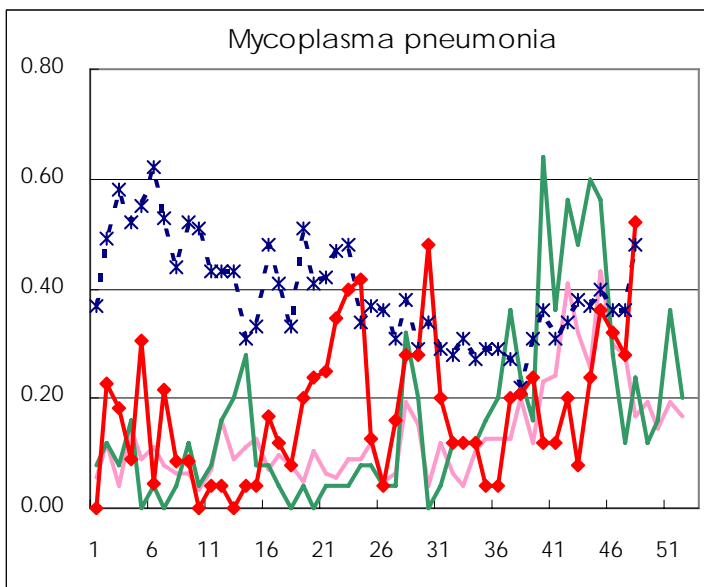
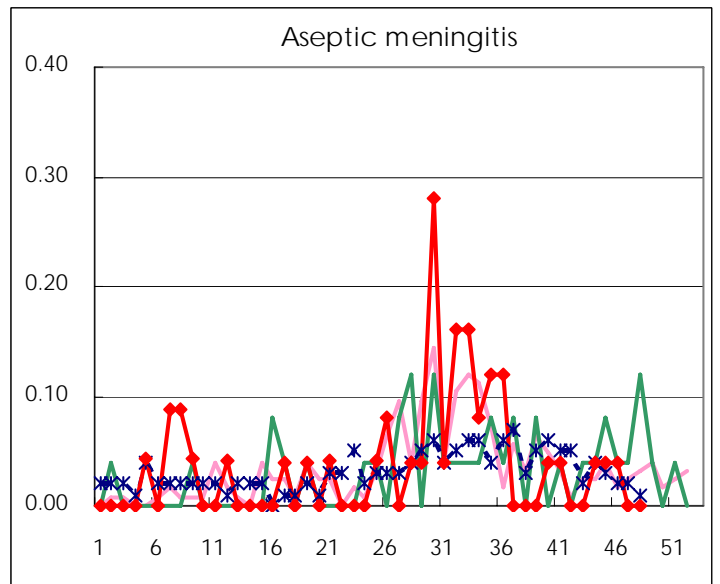
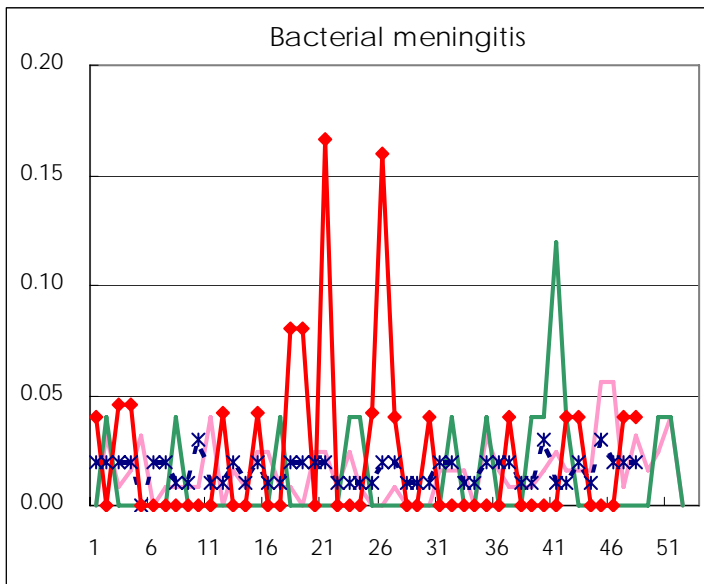
( Blank means 0. )

# Disease Trend Graph (weekly reported cases per fixed-point in comparison)









Number of sentinel facilities for weekly reporting		
Types of sentinels	Number of sentinels	Sentinels having reported
Pediatric	150	149
Influenza	290	286
Ophthalmic	39	39
Specially-designated	25	25

Tokyo Metropolitan Government  
Infectious Disease Surveillance Center