
INFECTIOUS DISEASES WEEKLY REPORT

TOKYO IDWR

Tokyo Metropolitan Infectious Disease Surveillance Center

13 December 2007 / Number 49

Surveillance System in Tokyo, Japan

The infectious diseases which all physicians must report

All physicians must report to health centers the incidence of the diseases which are shown at page one. Health centers electronically report the individual cases to Tokyo Metropolitan Infectious Disease Surveillance Center.

The infectious diseases required to be reported by the sentinels

The numbers of patients who visit the sentinel clinics or hospitals during a week are reported to health centers in Tokyo. And they electronically report the numbers to Tokyo Metropolitan Infectious Disease Surveillance Center. We have about 400 sentinel clinics and hospitals in Tokyo.

1st Week is early January and 52nd Week is end of December.

Tokyo Metropolitan Institute of Public Health
Epidemiological Information Office

TEL:81-3-3363-3213 FAX:81-3-5332-7365

e-mail:idsc@tokyo-eiken.go.jp

URL:idsc.tokyo-eiken.go.jp/

Number of patients with the diseases which all physicians must report

Category	Diseases	Tokyo					Japan	
		46th	47th	48th	49th	Cum 2007	49th	Cum 2007
I	Ebola hemorrhagic fever							
	Crimean-Congo hemorrhagic fever							
	Smallpox							
	South American hemorrhagic fever							
	Plague							
	Marburg disease							
	Lassa fever							
II	Acute poliomyelitis							
	Tuberculosis	97	60	72	55	2750	289	18011
	Diphtheria							
	Severe Acute Respiratory Syndrome(SARS)							
III	Cholera					2		12
	Shigellosis	2		2	4	83	4	436
	Enterohemorrhagic Escherichia coli infection	3	10	9	4	470	23	4507
	Typhoid fever					11		45
	Paratyphoid fever			1		7	1	20
IV	Hepatitis E					3	1	52
	West Nile fever							
	Hepatitis A				1	18	2	145
	Echinococcosis					3		16
	Yellow fever							
	Psittacosis					1		29
	Omsk hemorrhagic fever							
	Relapsing fever							
	Kyasanur forest disease							
	Q fever					1		5
	Rabies							
	Coccidioidomycosis					2		3
	Monkeypox							
	Hemorrhagic fever with renal syndrome							
	Western equine encephalitis							
	Tick-borne encephalitis							
	Anthrax							
	Scrub typhus(Tsutsugamushi disease)	1	1	4	3	11	23	255
	Dengue fever				1	23	2	86
	Eastern equine encephalitis							
	Avian influenza virus infection							
	Nipah virus infection							
	Japanese spotted fever							89
	Japanese encephalitis							9
	Epidemic typhus							
	Hantavirus pulmonary syndrome							
	Herpes B virus infection							
	Glanders							
	Brucellosis							1
	Venezuelan equine encephalitis							
	Hendra virus infection							
	Botulism							3
Malaria					22		49	
Tularemia								
Lyme disease					3		10	
Lyssavirus infection(excluding rabies)								
Rift valley fever								
Melioidosis								
Legionellosis		2	1	1	52	13	620	
Leptospirosis					3	1	33	
Rocky mountain spotted fever								

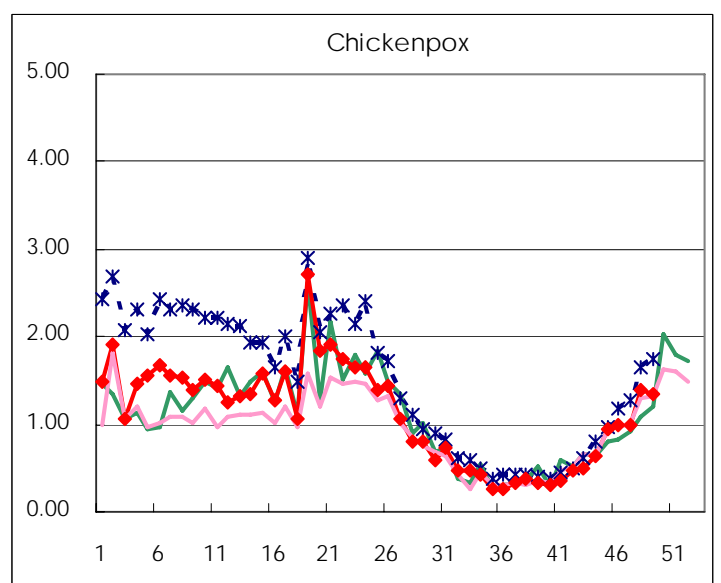
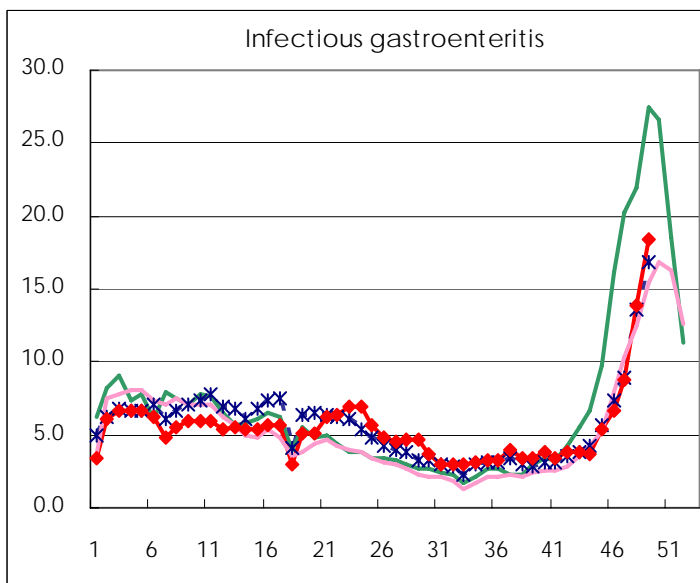
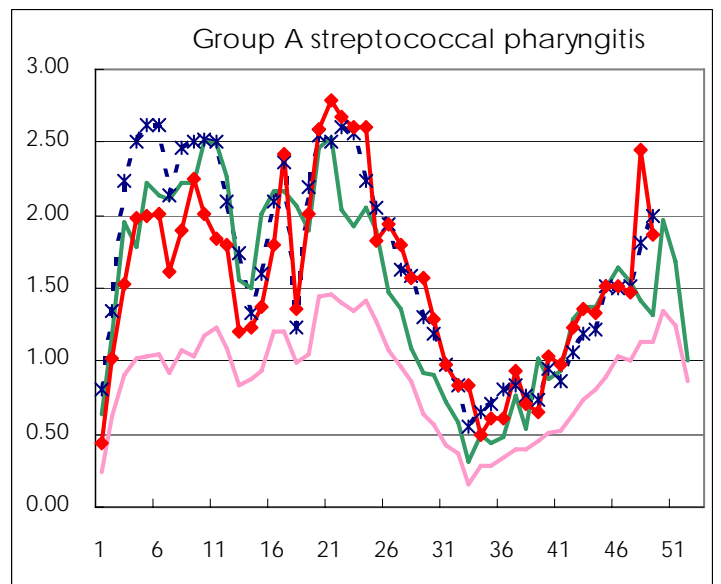
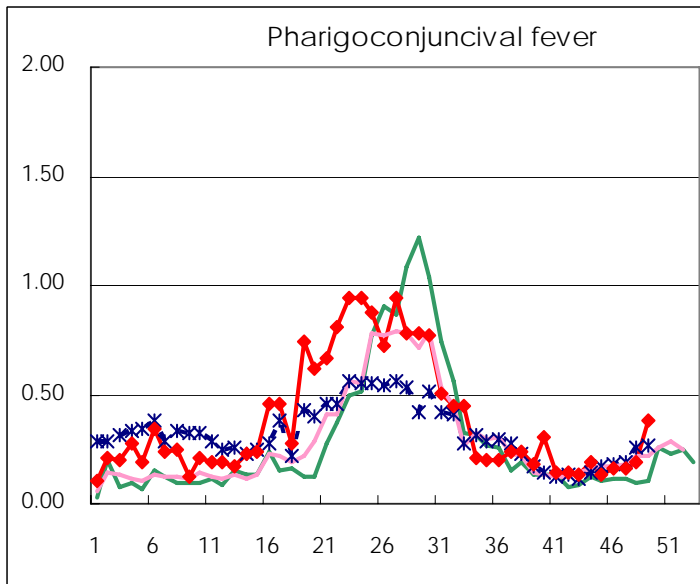
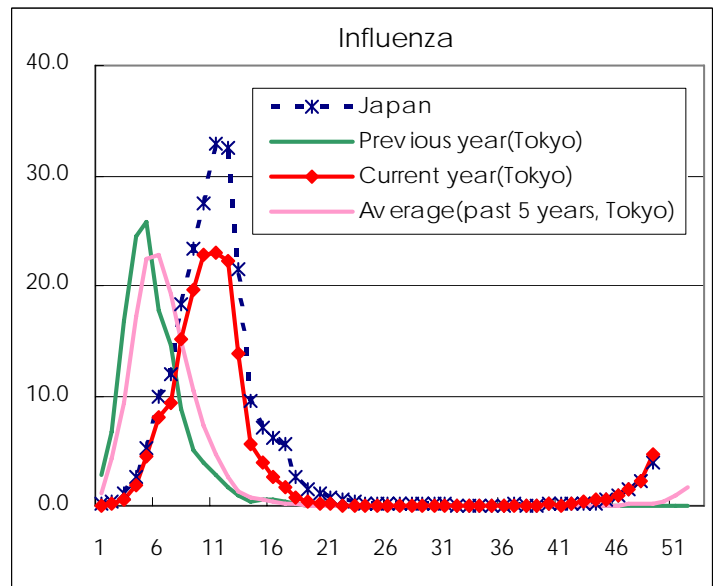
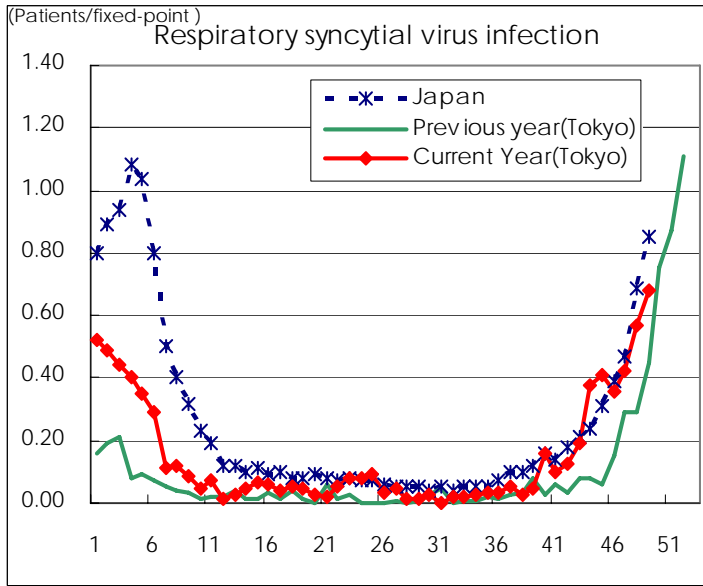
Category	Diseases	Tokyo				Japan		
		46th	47th	48th	49th	Cum 2007	49th	Cum 2007
V	Amebiasis	3	1	3	2	160	14	738
	Viral hepatitis(excluding hepatitis A and E)	1	1		3	39	6	222
	Acute encephalitis(excluding JE and WNE)		1			18	1	207
	Cryptosporidiosis					1		6
	Creutzfeldt-Jakob disease			2		15	2	135
	Severe invasive streptococcal infections(TSLS)					6	1	91
	Acquired immunodeficiency syndrome (AIDS)	12	6	8	16	485	21	1379
	Giardiasis				1	16		51
	Meningococcal meningitis		1			3	1	16
	Congenital rubella syndrome							
	Syphilis	2	1	2	5	153	5	673
	Tetanus					1		87
	Vancomycin-resistant S. aureus infection							
	Vancomycin-resistant Enterococcus infection			1		15		74
designated	Influenza (H5N1)							

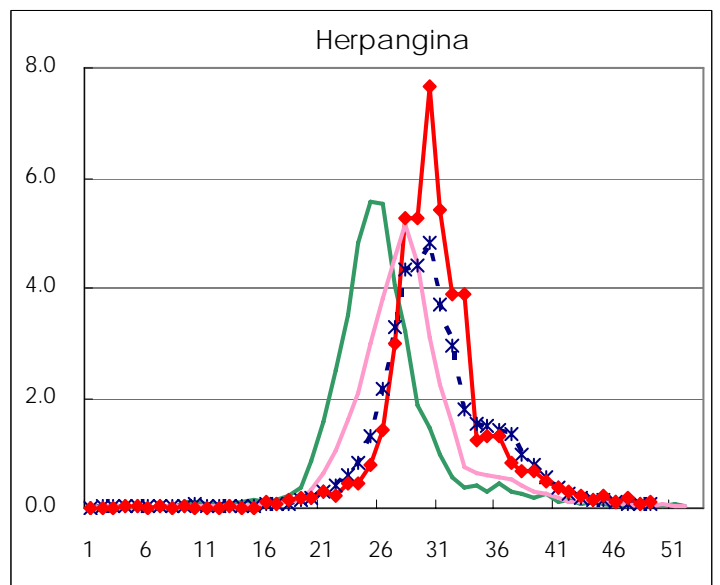
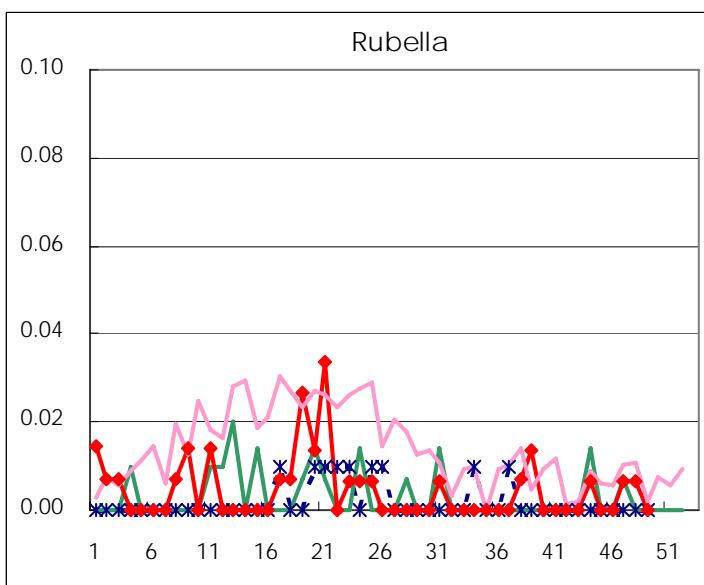
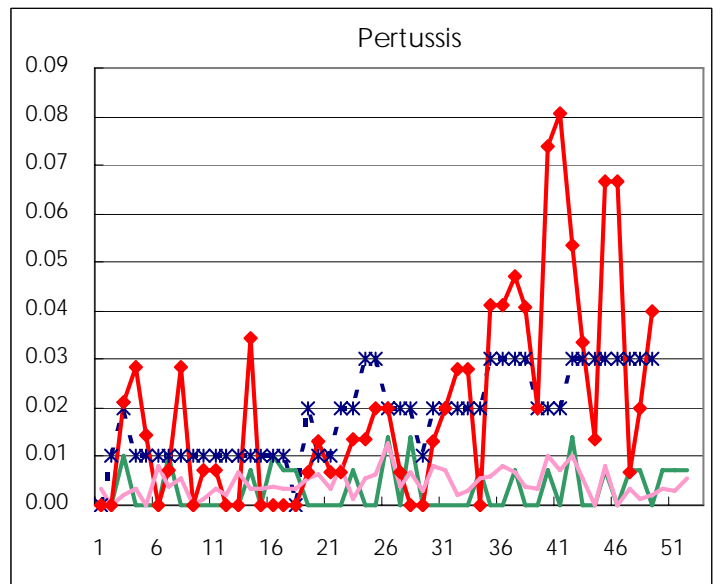
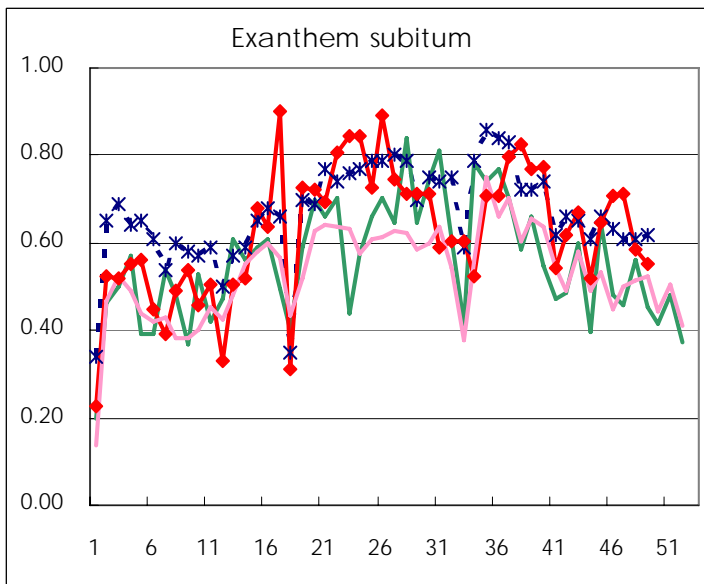
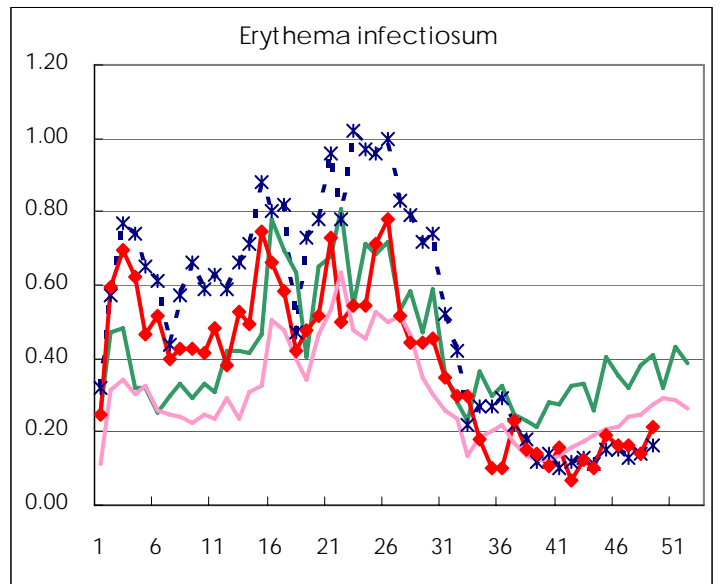
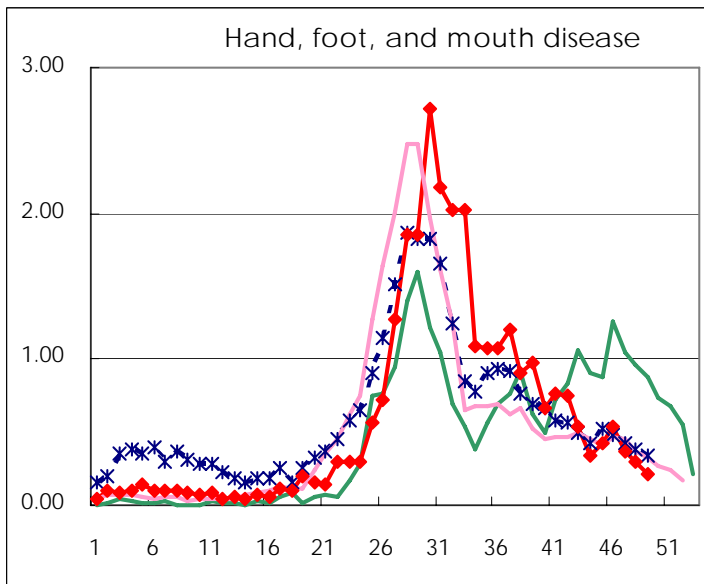
Number of patients with the diseases to be reported
by the designated clinics and hospitals

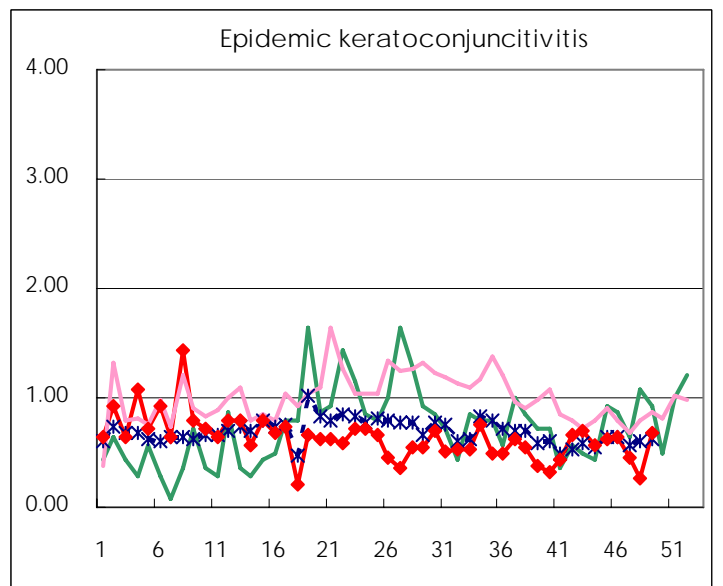
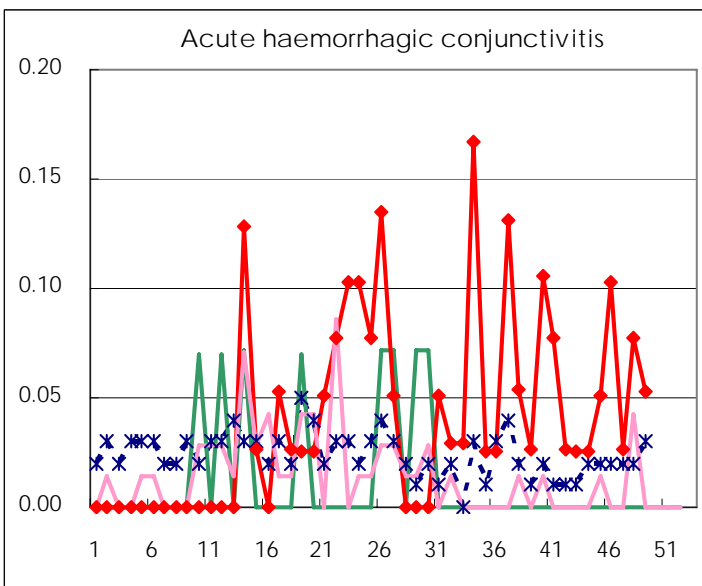
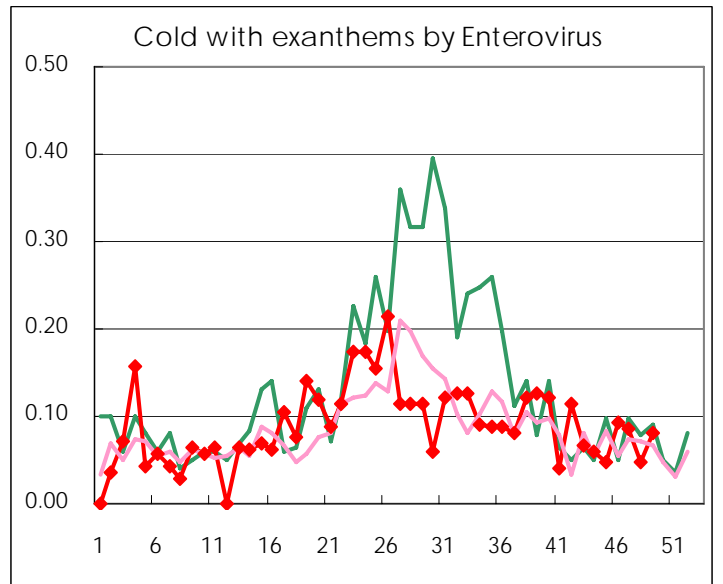
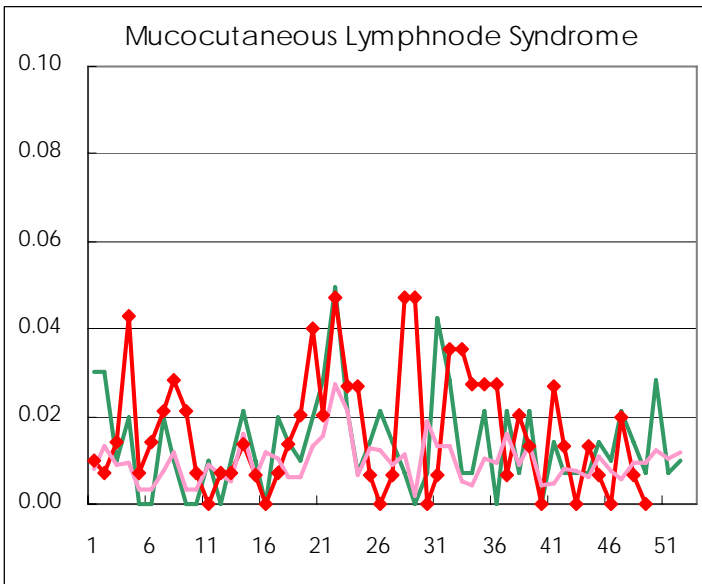
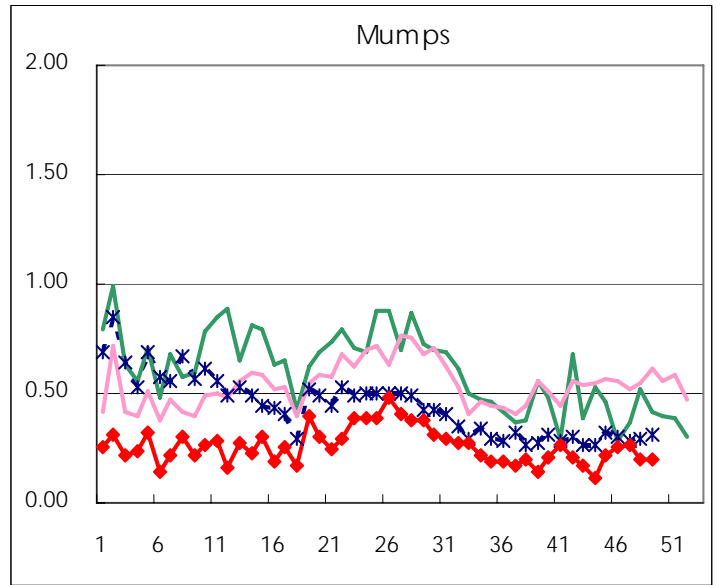
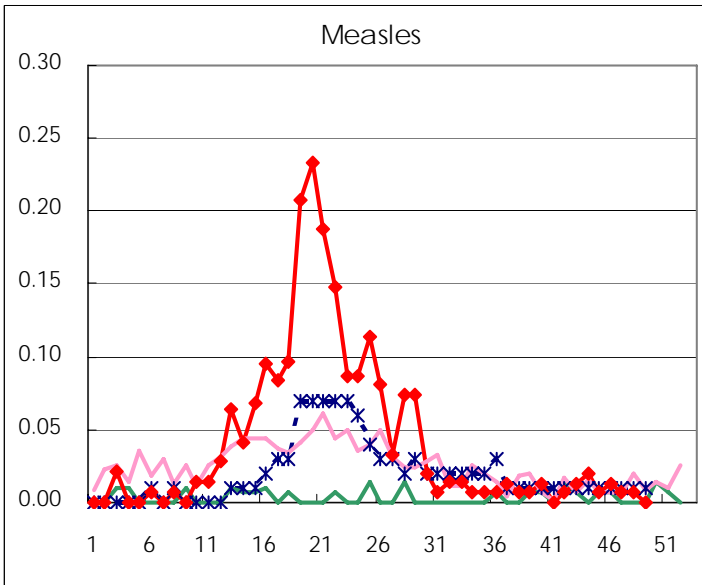
Diseases	2007				4wks total	Cum 2007
	46th	47th	48th	49th		
Respiratory syncytial virus infection	53	63	85	102	303	1079
Influenza	293	416	651	1,362	2,722	47119
Pharyngoconjunctival fever	24	25	28	57	134	2660
Group A streptococcal pharyngitis	227	220	364	280	1,091	11106
Infectious gastroenteritis	1,002	1,313	2,070	2,755	7,140	38472
Chickenpox	150	149	206	200	705	8088
Hand, foot, and mouth disease	80	56	45	31	212	4292
Erythema infectiosum	24	24	21	32	101	2783
Exanthem subitum	106	107	87	83	383	4461
Pertussis	10	1	3	6	20	138
Rubella		1	1		2	34
Herpangina	19	29	12	16	76	6779
Measles	2	1	1		4	302
Mumps	38	40	29	30	137	1846
Cold with exantheams by Enterovirus	14	13	7	12	46	633
Mucocutaneous Lymphnode Syndrome		3	1		4	103
Acute hemorrhagic conjunctivitis	4	1	3	2	10	78
Epidemic keratoconjunctivitis	25	17	10	26	78	910
Bacterial meningitis		1	1	2	4	31
Aseptic meningitis	1				1	50
Mycoplasma pneumonia	8	7	13	10	38	211
Chlamydial pneumonia (excluding psittacosis)		1			1	19
Measles in adults		1			1	258

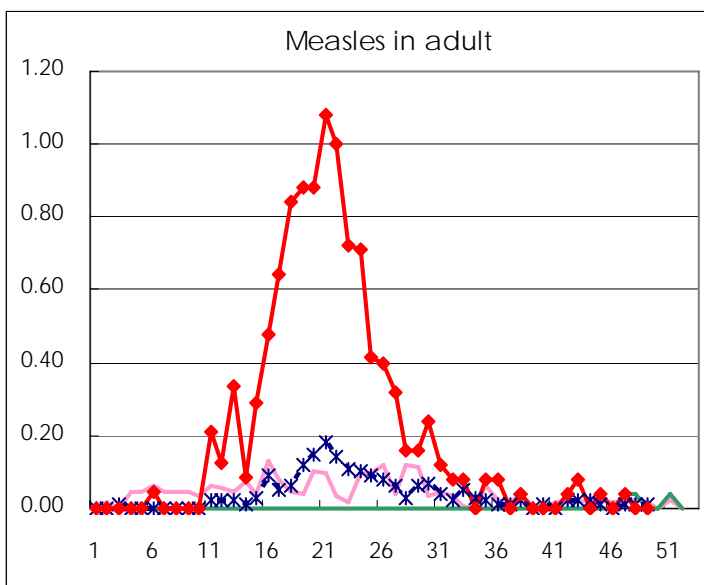
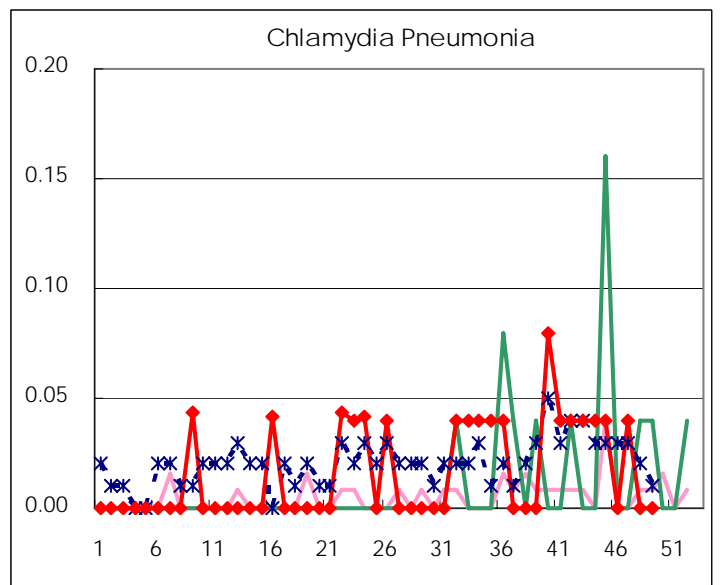
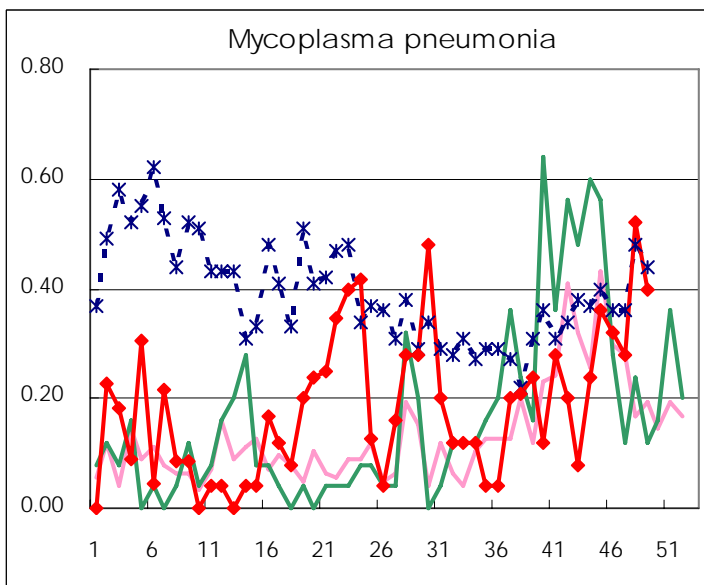
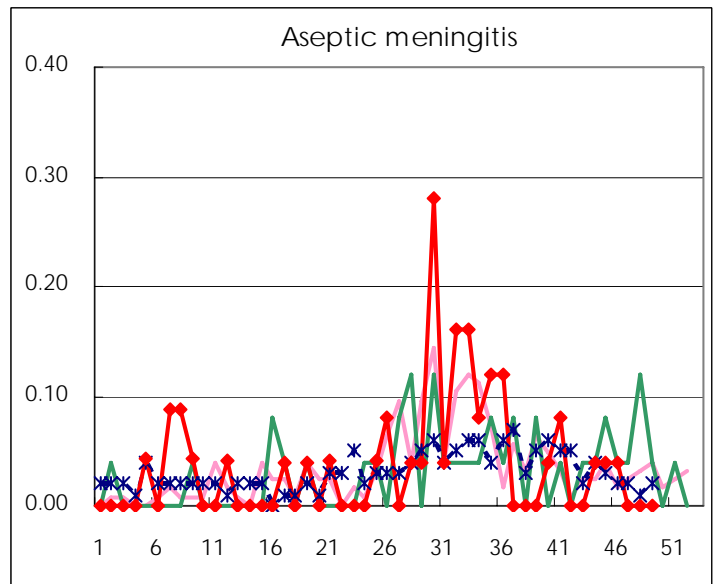
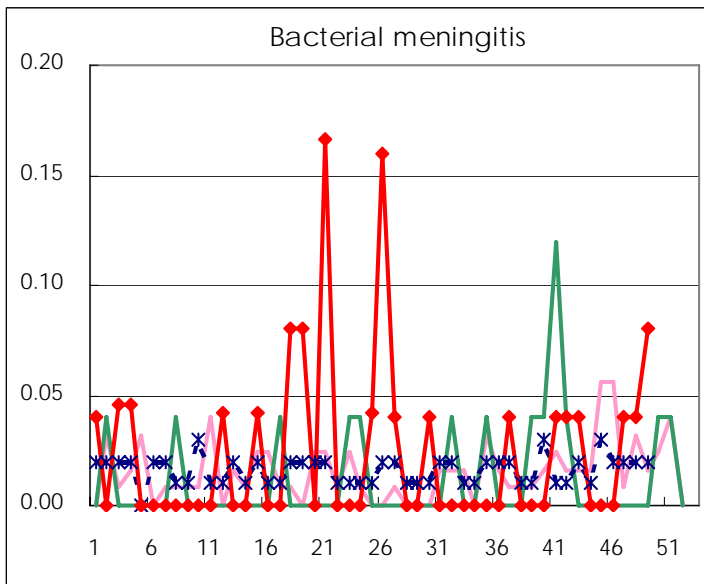
(Blank means 0.)

Disease Trend Graph (weekly reported cases per fixed-point in comparison)









Number of sentinel facilities for weekly reporting		
Types of sentinels	Number of sentinels	Sentinels having reported
Pediatric	150	150
Influenza	290	288
Ophthalmic	39	38
Specially-designated	25	25

Tokyo Metropolitan Government
Infectious Disease Surveillance Center